

V&V Reference Report

L2 ASCDS Version : 10.2.4

Observation 16635 - L2 Version 1
Chandra X-Ray Center

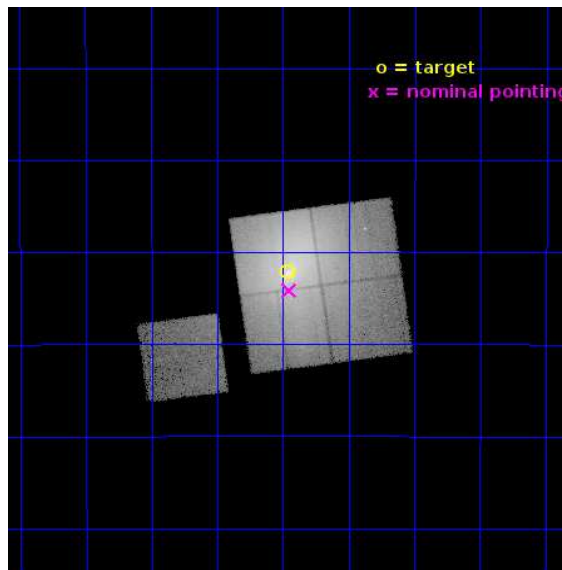
L2 Processing Date : Jul 13 2014

Contents

1	Front	2
2	OBI	3
2.1	OBI	3
2.1.1	Images	3
2.1.2	Bias	3
2.1.3	Parameters	4
2.1.4	Events	4
2.2	Compared Parameters	5
2.3	Aspect	6
2.4	Star Slots	9
2.4.1	Slot 3	9
2.4.2	Slot 4	10
2.4.3	Slot 5	11
2.4.4	Slot 6	12
2.4.5	Slot 7	13
2.5	FID Slots	14
2.5.1	Slot 0	14
2.5.2	Slot 1	15
2.5.3	Slot 2	16
A	Summary	17
A.1	Status	17
A.2	Comments	17

1 Front

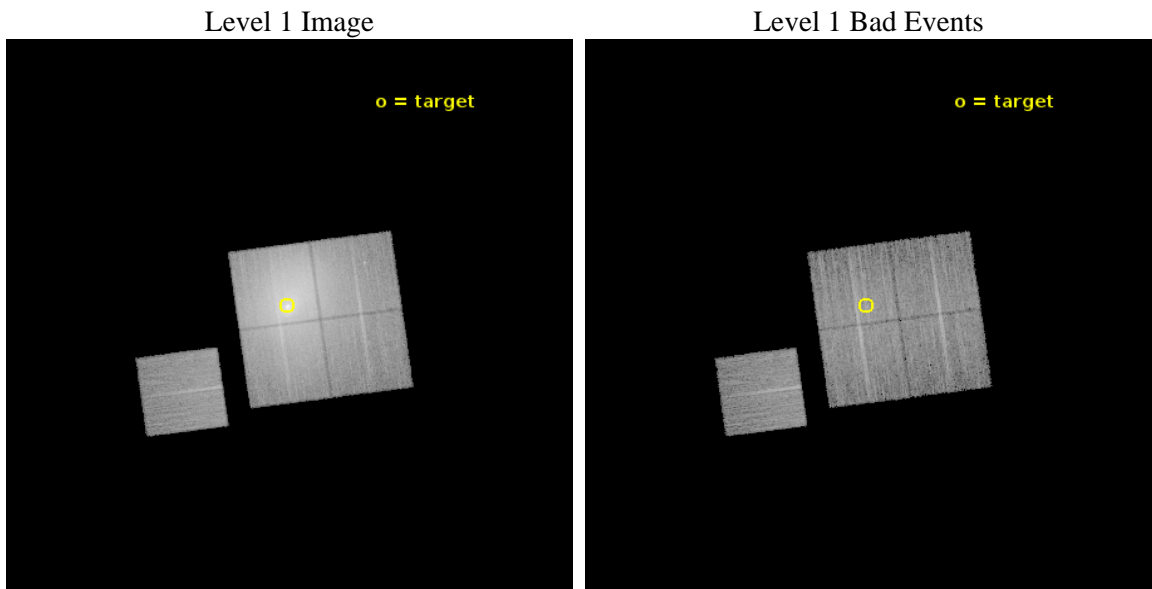
seq_num	801396	Sequence number
obs_id	16635	Observation id
title	A deep study of ram-pressure stripping, metal ridges, and AGN feedback in the Ophiuchus Cluster	Proposal title
observer	Steven Allen	Principal investigator
object	Ophiuchus Cluster	Source name
dtcycle	0	
cycle	P	events from which exps? Prim/Second/Both
ra_targ	258.115417	Observer's specified target RA [deg]
dec_targ	-23.368611	Observer's specified target Dec [deg]
ra_nom	258.11300341646	Nominal RA [deg]
dec_nom	-23.402250688768	Nominal Dec [deg]
roll_nom	262.20773660422	Nominal Roll [deg]
revision	1	Processing version of data
ontime	19153.867743313	Sum of GTIs [s]
livetime	18903.608360375	Livetime [s]
ontime0	19150.603602946	Sum of GTIs [s]
ontime1	19153.785663307	Sum of GTIs [s]
ontime2	19153.82670331	Sum of GTIs [s]
ontime3	19153.867743313	Sum of GTIs [s]
ontime6	19153.7035833	Sum of GTIs [s]
l2events	563948	Number of level 2 events



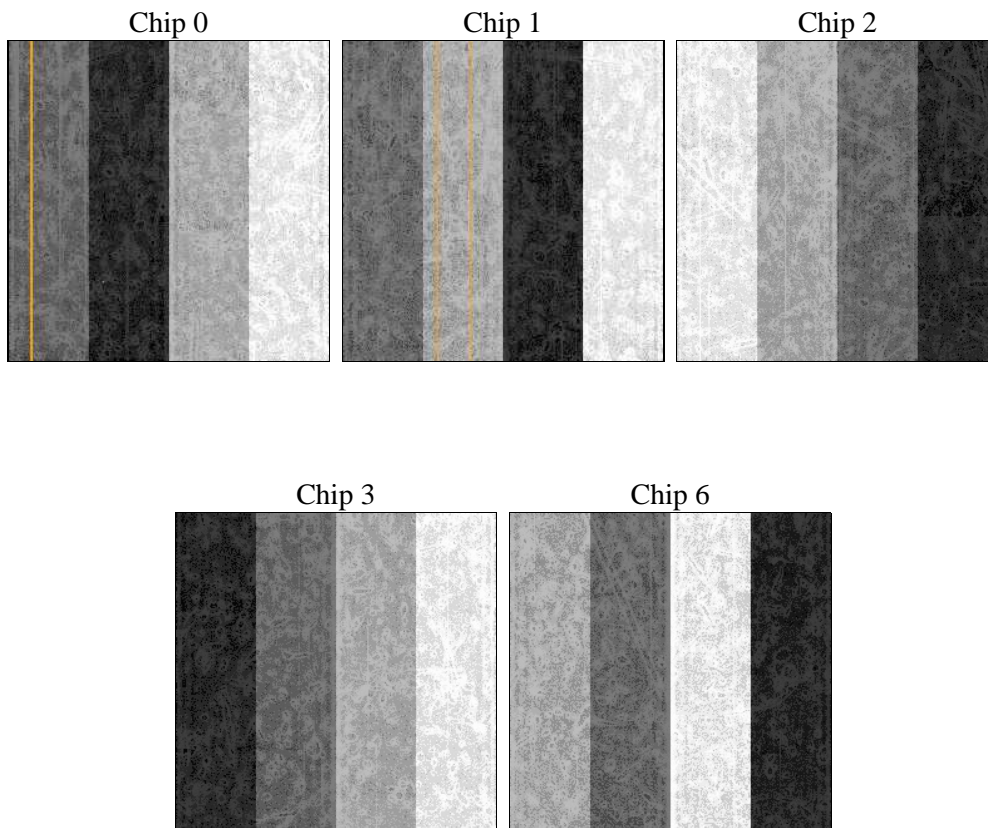
2 OBI

2.1 OBI

2.1.1 Images



2.1.2 Bias



2.1.3 Parameters

obi_num	1	Obi number	sched_exp_time	19067.625000	[s] Scheduled observation exposure time
ascdsver	10.2.4	Processing system revision	ontime	19153.867743313	Sum of GTIs [s]
caldbver	4.6.2	 	ontime0	19150.603602946	Sum of GTIs [s]
date	2014-07-13T09:15:26	Date and time of file creation	ontime1	19153.785663307	Sum of GTIs [s]
revision	1	Processing version of data	ontime2	19153.82670331	Sum of GTIs [s]
			ontime3	19153.867743313	Sum of GTIs [s]
			ontime6	19153.7035833	Sum of GTIs [s]
			l1events	994187	Number of level 1 events

2.1.4 Events

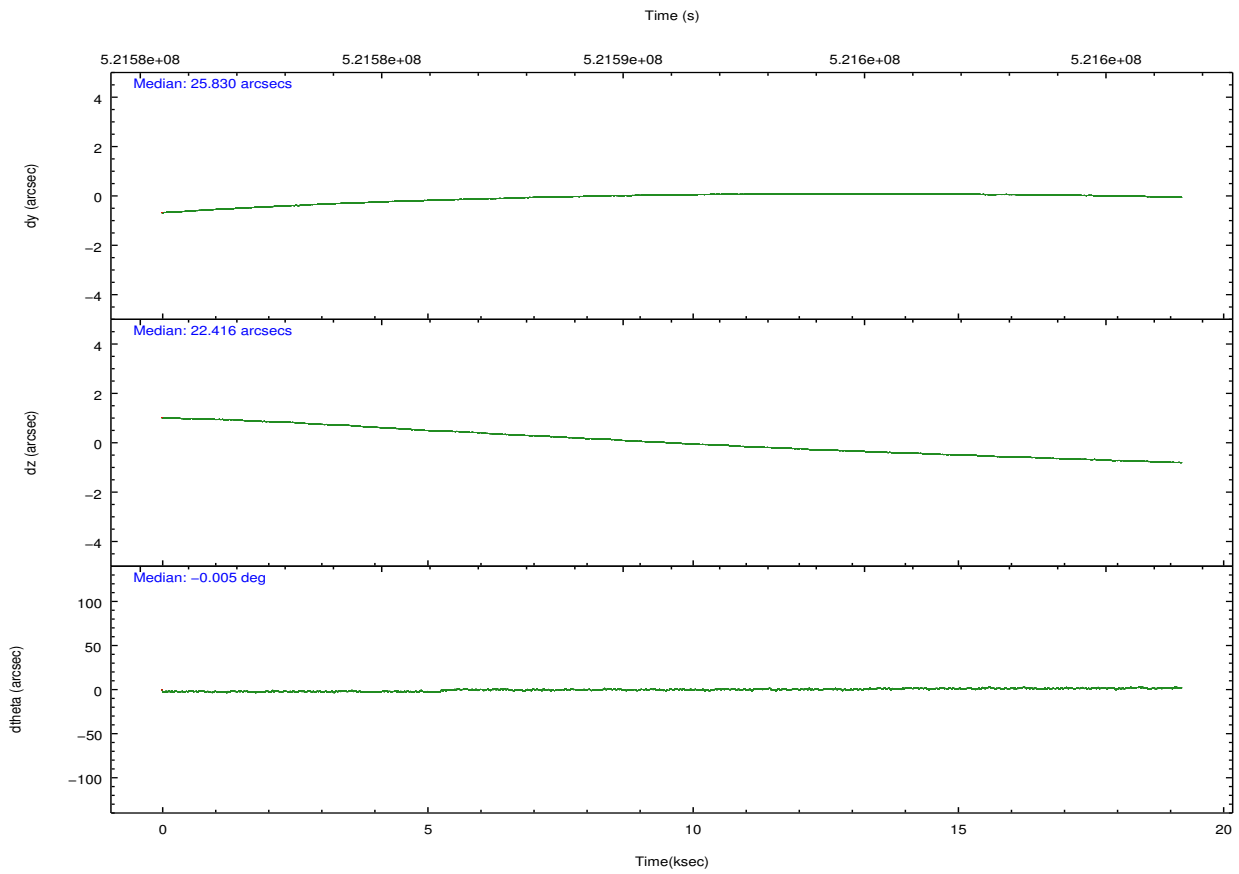
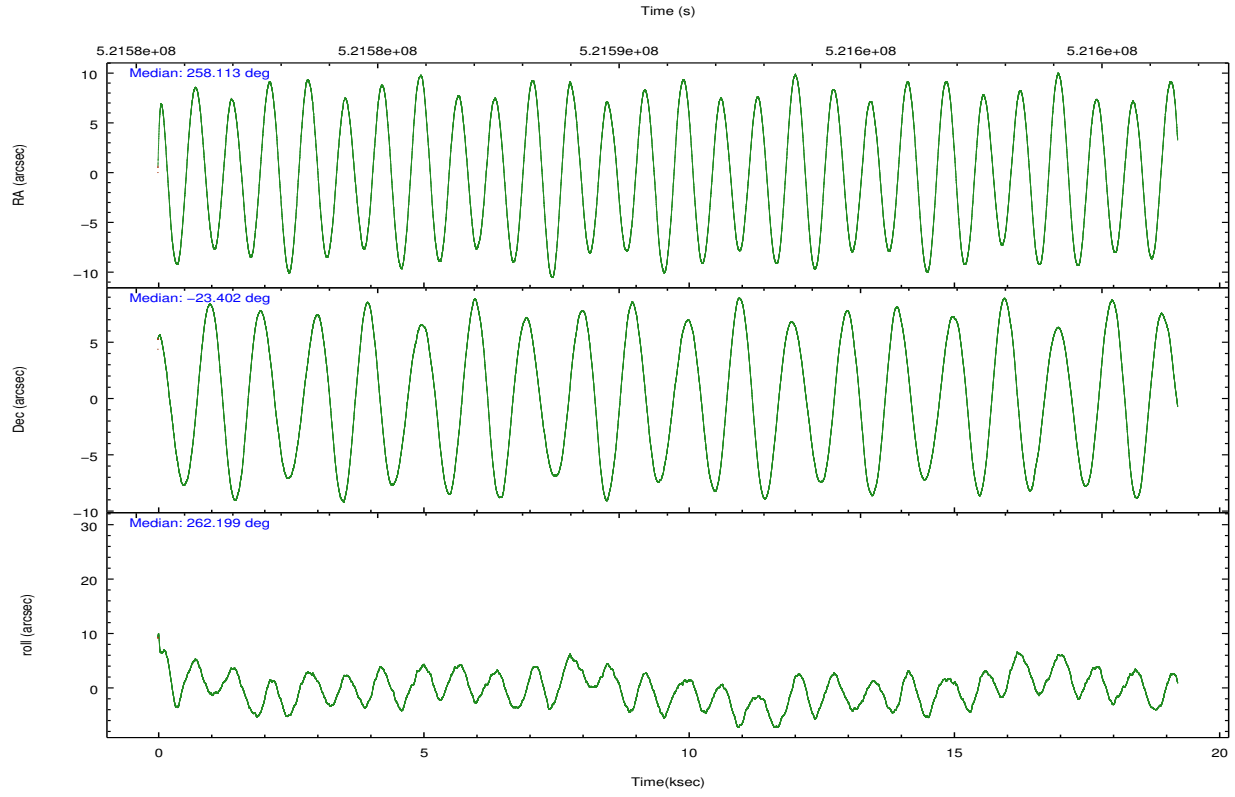
	ccd 0	ccd 1	ccd 2	ccd 3	ccd 6
level 1 events	119826	176404	190063	403743	104151
rejected events	71221	75060	82285	86777	82093
rejected %	59%	42%	43%	21%	78%

	ccd 0	ccd 1	ccd 2	ccd 3	ccd 6
grade 0 events	33098	72735	80030	242966	12264
	27%	41%	42%	60%	11%
grade 1 events	156	257	401	1092	72
	0%	0%	0%	0%	0%
grade 2 events	6975	13750	13131	36674	3784
	5%	7%	6%	9%	3%
grade 3 events	2455	4396	4536	12002	1525
	2%	2%	2%	2%	1%
grade 4 events	2446	4391	4615	12261	1517
	2%	2%	2%	3%	1%
grade 5 events	4466	4912	4631	5995	4847
	3%	2%	2%	1%	4%
grade 6 events	3634	6080	5481	13125	2972
	3%	3%	2%	3%	2%
grade 7 events	66596	69883	77238	79628	77170
	55%	39%	40%	19%	74%

2.2 Compared Parameters

Parameter	Planned	Actual	Parameter	Planned	Actual
Instrument	ACIS	ACIS	Obspar format version number	7	7
Detector	ACIS-01236	ACIS-01236	Obspar file type	PREDICTED	ACTUAL
Grating	NONE	NONE	Obspar update status	NONE	UPDATED
Data mode	FAINT	FAINT	CCD I0 on	Y	Y
Observation mode	POINTING	POINTING	CCD I1 on	Y	Y
[deg] Pointing RA	258.101519	258.1130034164644	CCD I2 on	Y	Y
[deg] Pointing Dec	-23.376750	-23.40225068876815	CCD I3 on	Y	Y
[deg] Pointing Roll	261.994485	262.2077366042213	CCD S0 on	N	N
[mm] SIM focus pos	-0.782348	-0.7809083437167272	CCD S1 on	N	N
[mm] SIM defocus	0	0.001439871863259334	CCD S2 on	O1	Y
[mm] SIM translation stage pos	-226.282463	-226.2858628250985	CCD S3 on	N	N
[mm] SIM translation stage offset	-7.31	-7.306590177831225	CCD S4 on	N	N
[s] Observation start time (MET)	521581549.184000	521580172.93772	CCD S5 on	N	N
Observation start date	2014-07-12T19:44:42	2014-07-12T19:22:52	Number of optional ACIS chips dropped	0	0
[s] Observation end time (MET)	521600616.184000	521600851.28887	On-chip summing requested	N	N
Observation end date	2014-07-13T01:02:29	2014-07-13T01:07:31	Subarray requested	NONE	NONE
Read mode	TIMED	TIMED	Alternating exposures requested	N	N
			[s] Primary exposure time	0.000000	3.1

2.3 Aspect

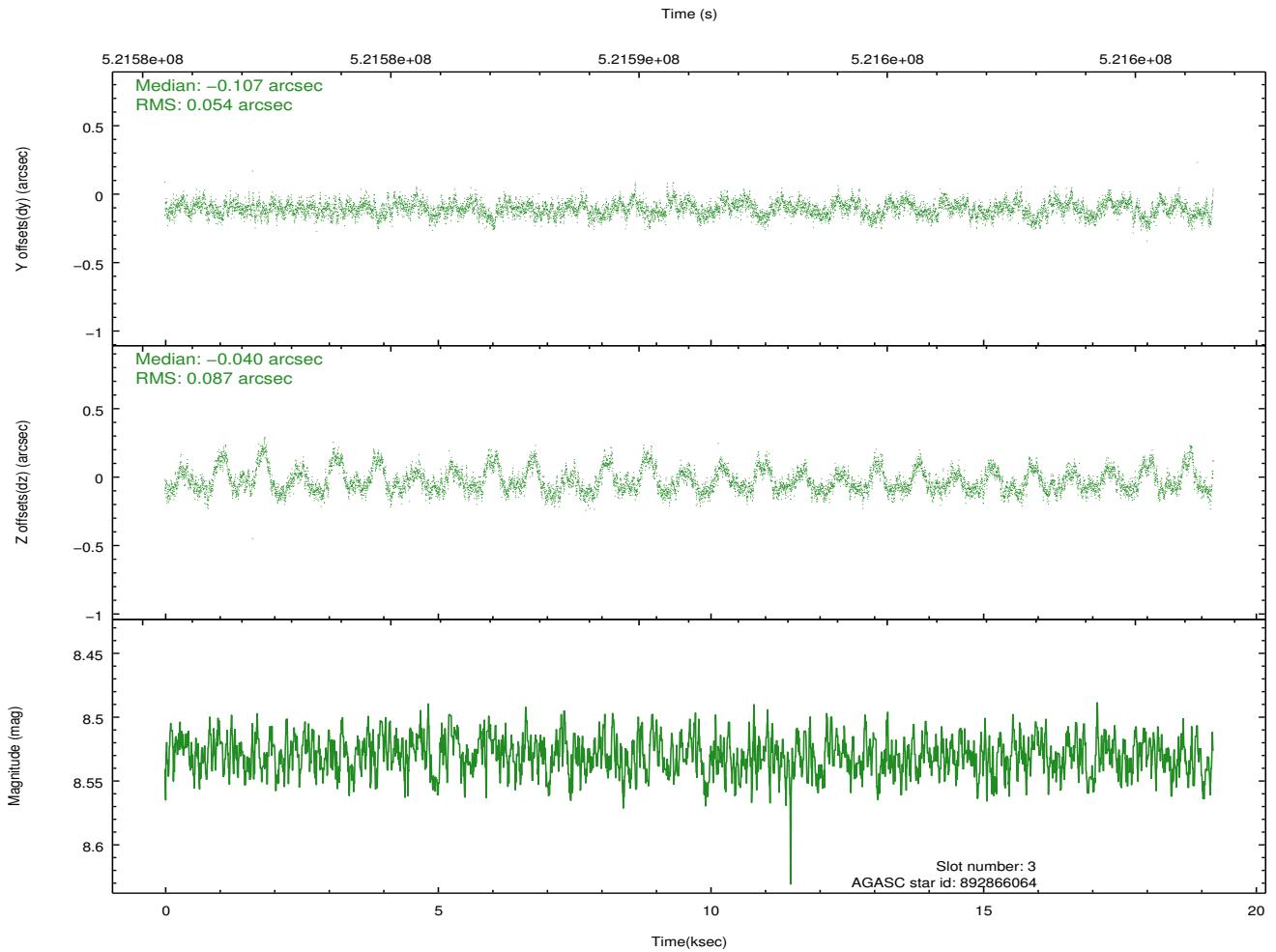
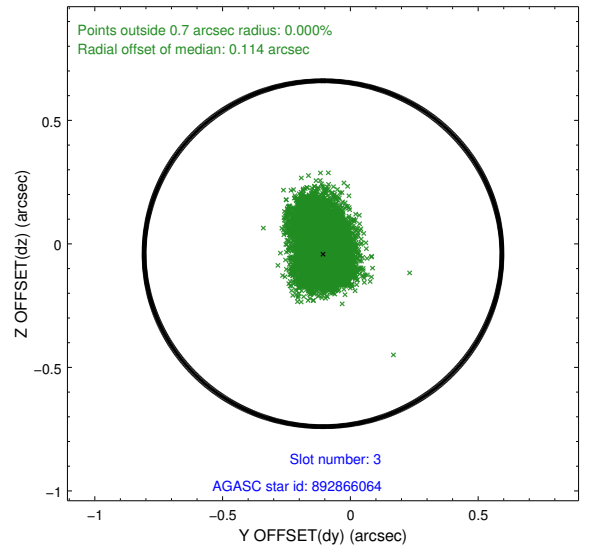
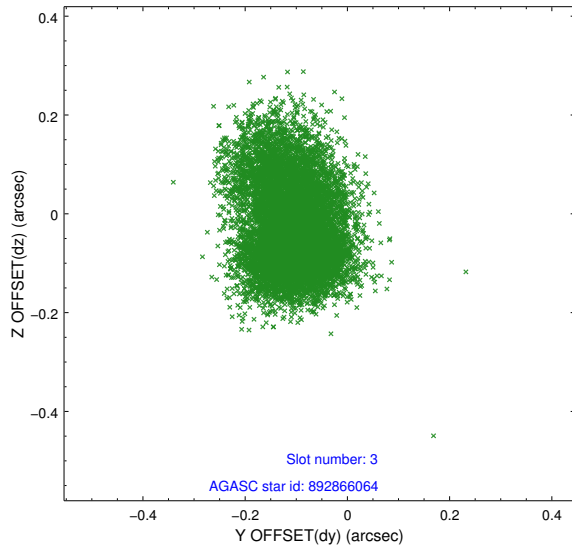


Slot Statistics

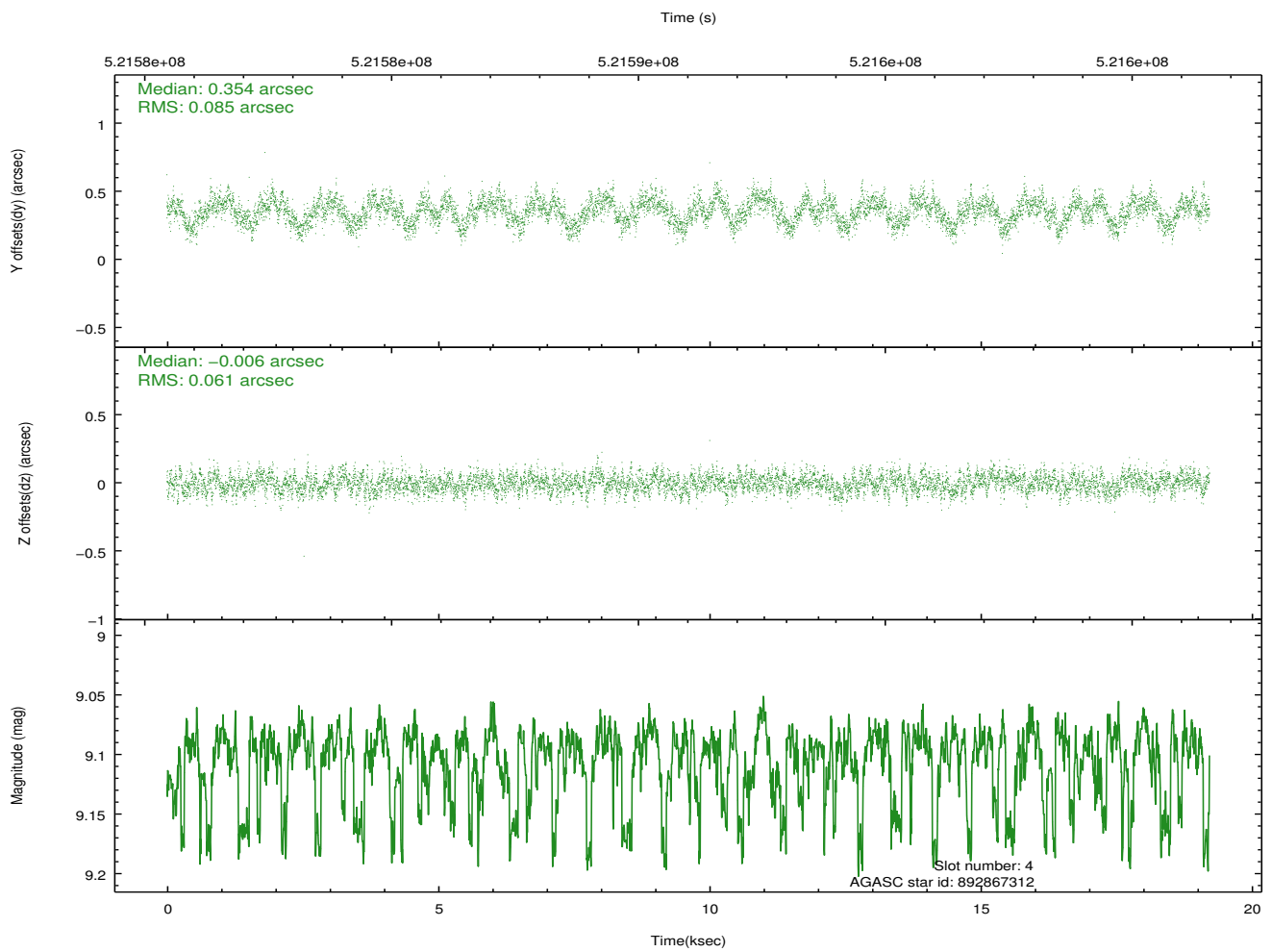
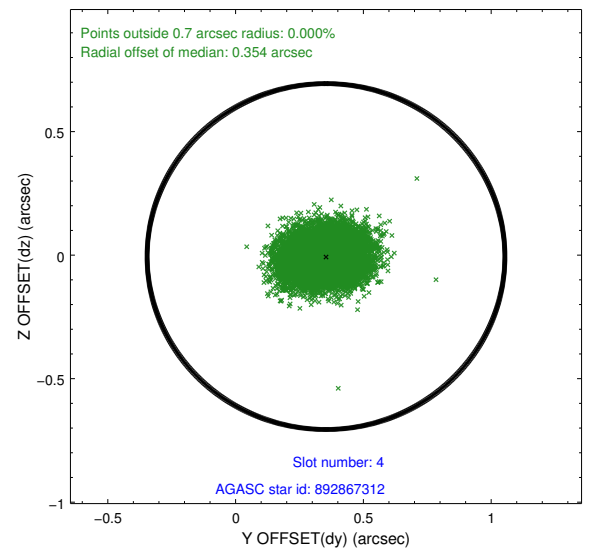
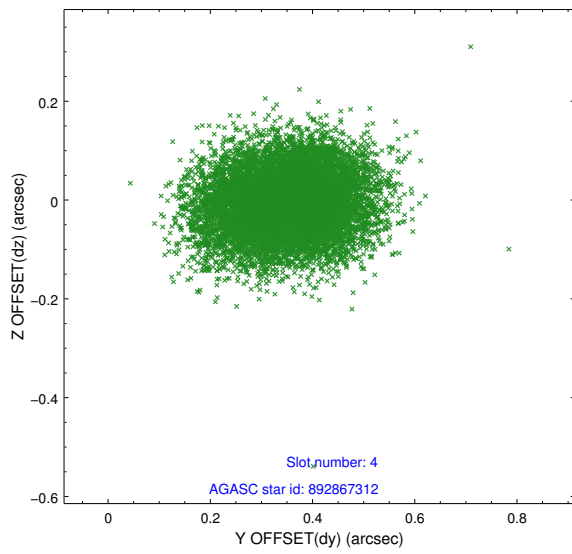
slot	status	id	mag	n_pts	med_dy	med_dz	dr1	dr2	ra	dec	mean_y	mean_z
0	FID	ACIS-I-1	7.09	4689	0.030	-0.083	0.014	0.026	0.000000	0.000000	913.37	-996.28
1	FID	ACIS-I-4	6.99	4689	0.284	0.068	0.017	0.042	0.000000	0.000000	2133.26	904.52
2	FID	ACIS-I-5	7.10	4689	-0.410	0.086	0.019	0.036	0.000000	0.000000	-1834.90	901.51
3	GUIDE	892866064	8.53	9375	-0.107	-0.040	0.105	0.186	258.346240	-23.232516	-625.78	729.15
4	GUIDE	892867312	9.10	9375	0.354	-0.006	0.112	0.180	258.441623	-24.052318	2254.74	1446.36
5	GUIDE	892867776	8.49	9378	-0.268	-0.223	0.080	0.135	258.697515	-24.060278	2168.32	2283.53
6	GUIDE	892755168	9.28	9374	0.155	0.009	0.177	0.287	257.345207	-23.908184	2249.16	-2197.21
7	GUIDE	892865624	9.20	9371	-0.129	0.248	0.161	0.240	257.483794	-23.531864	842.35	-1940.68

2.4 Star Slots

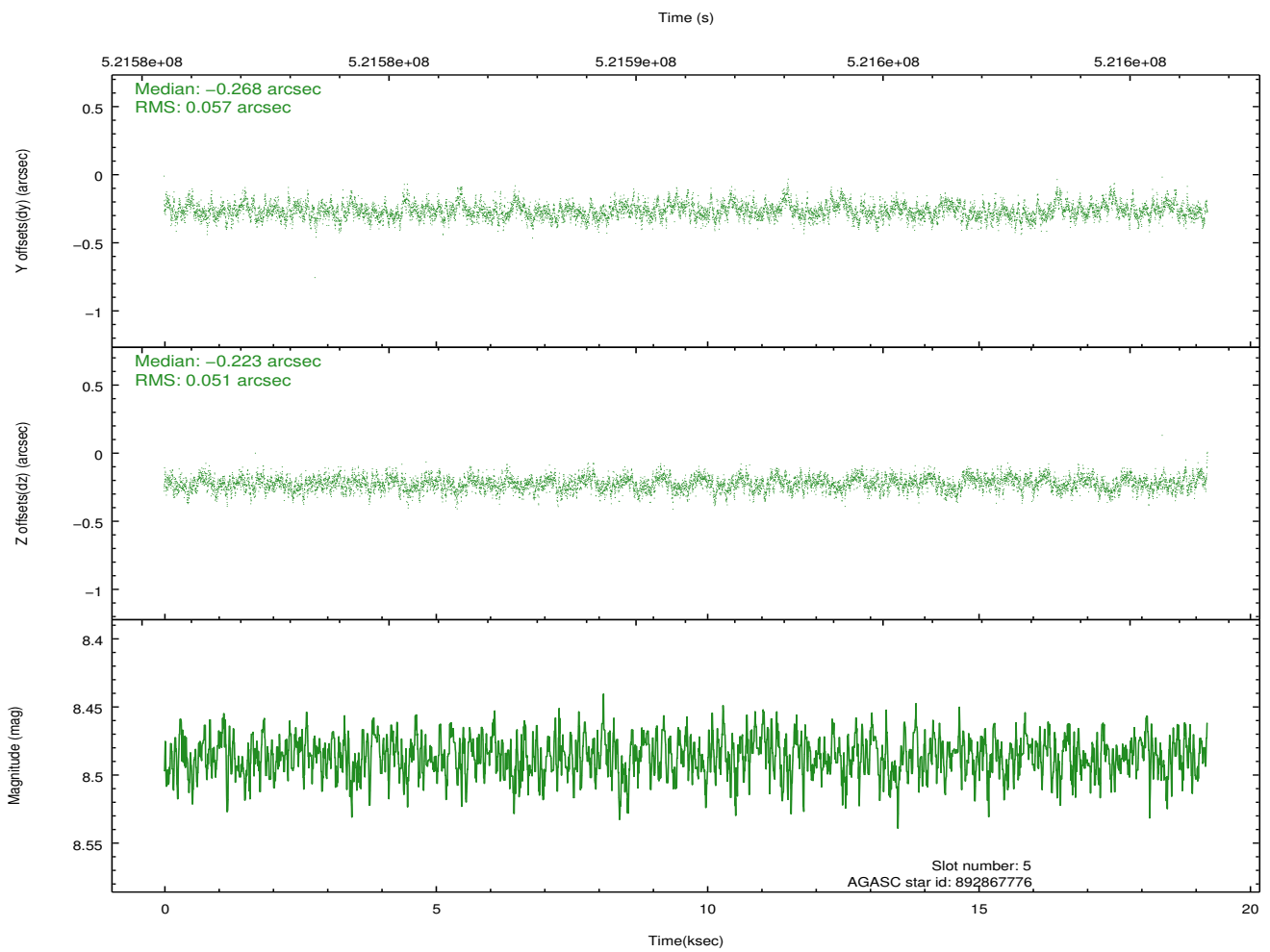
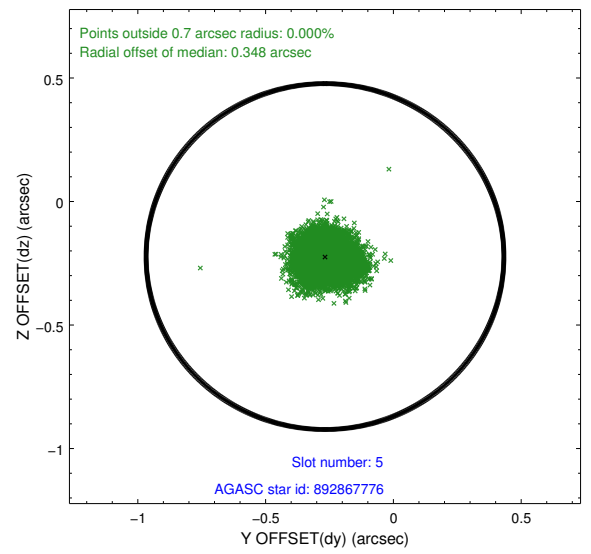
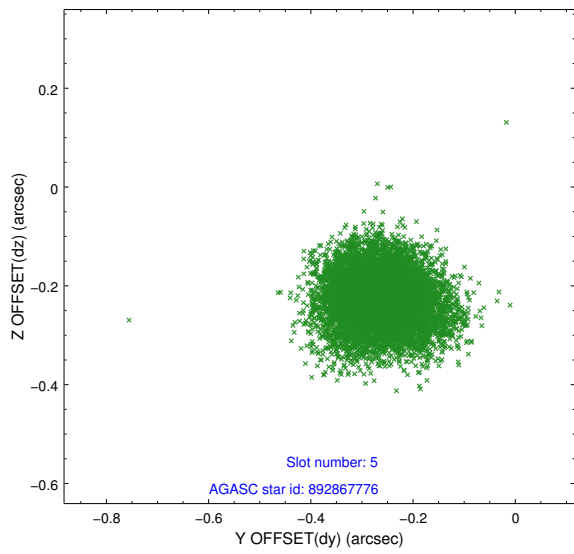
2.4.1 Slot 3



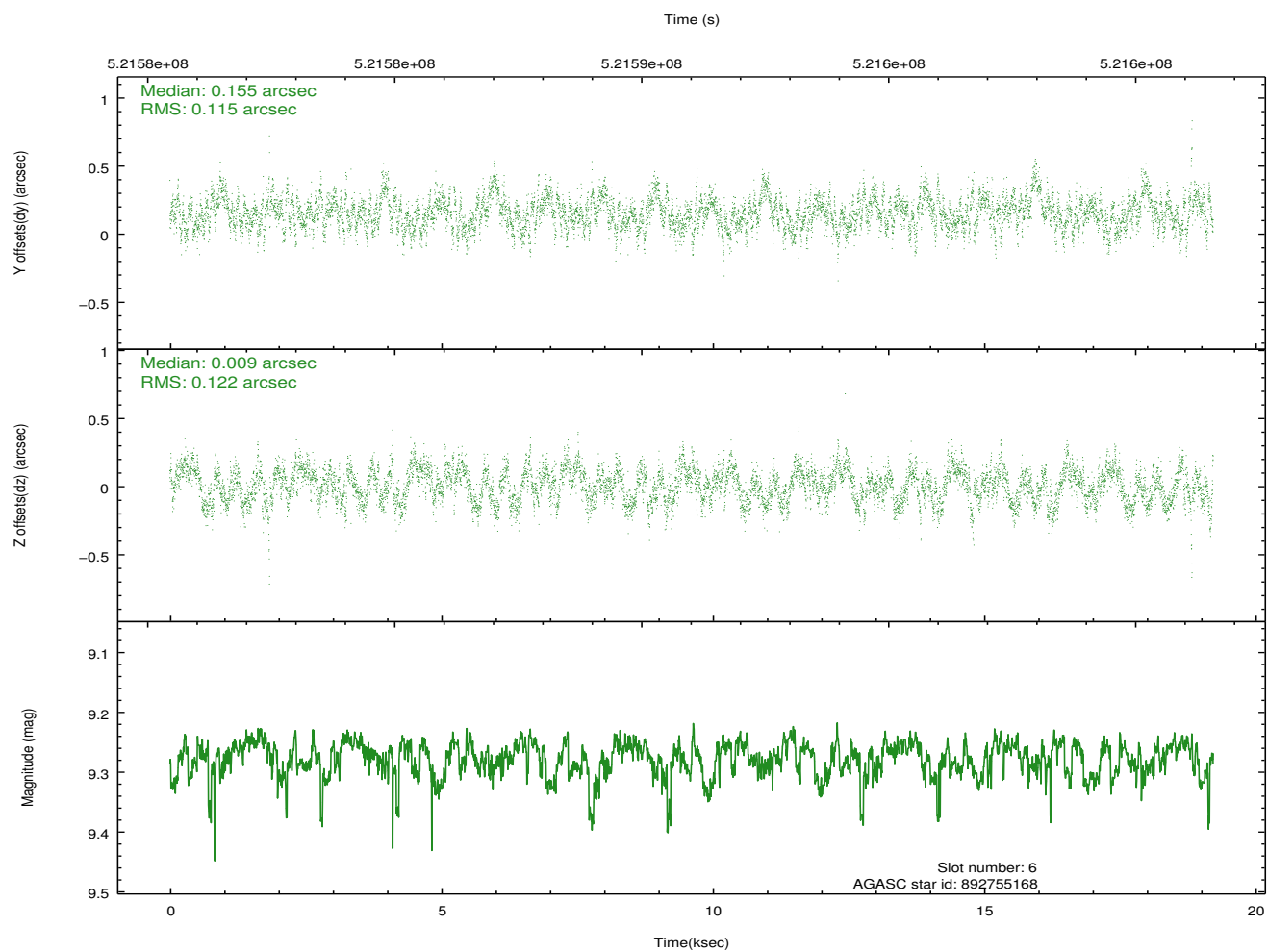
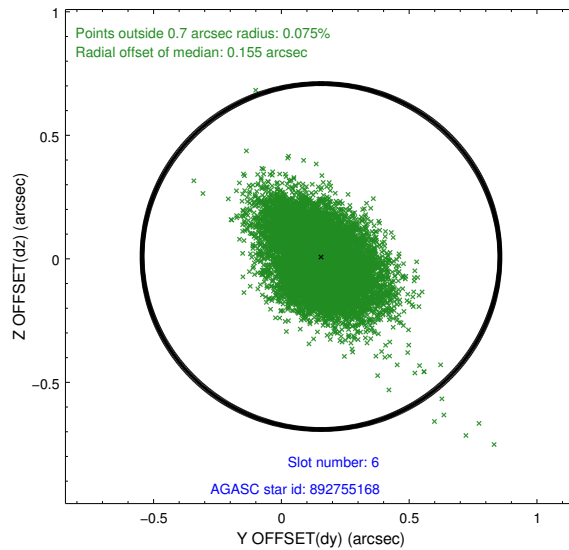
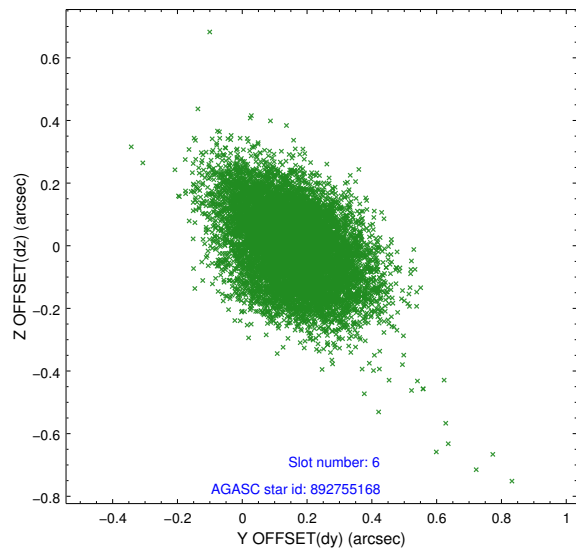
2.4.2 Slot 4



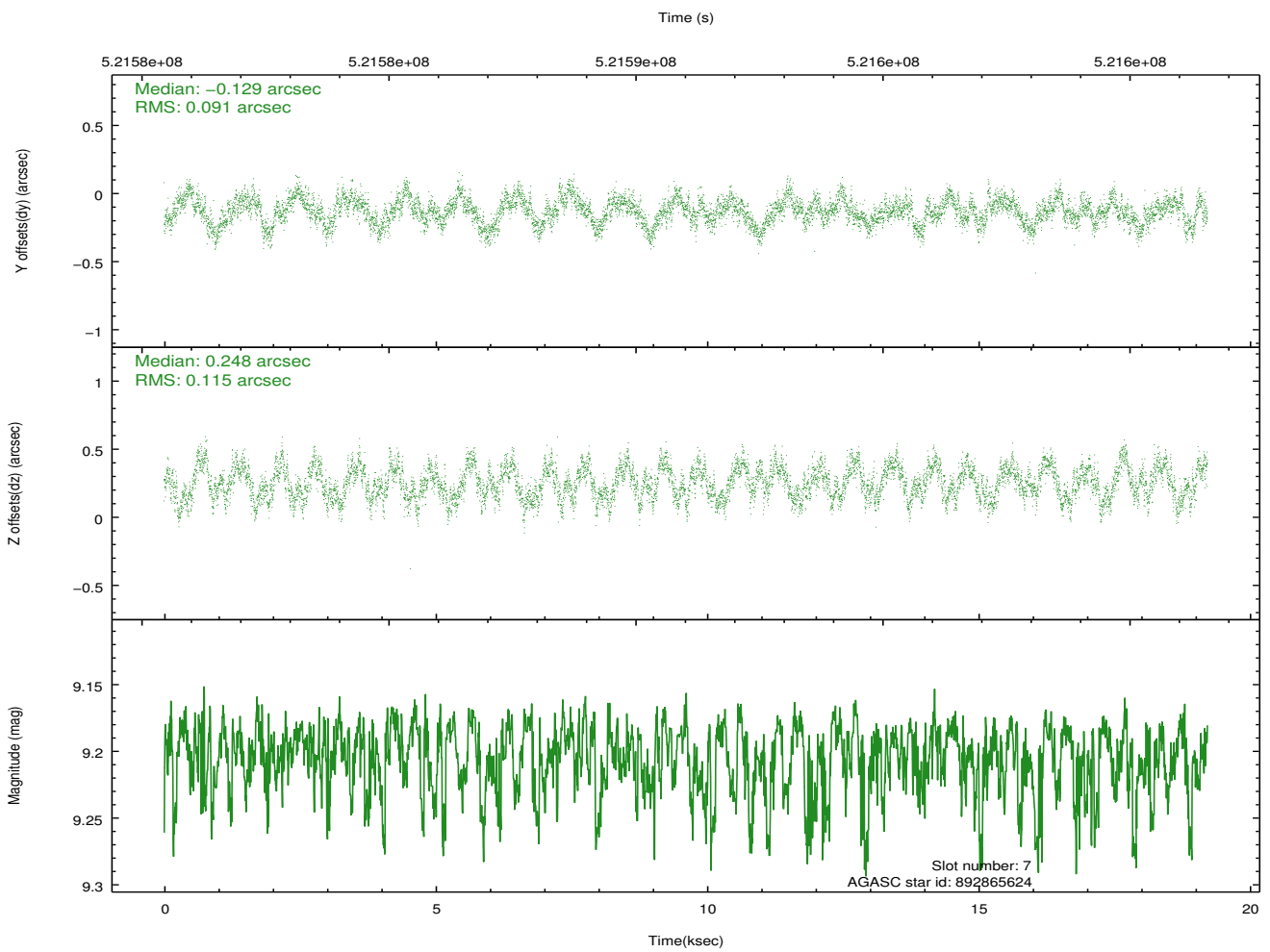
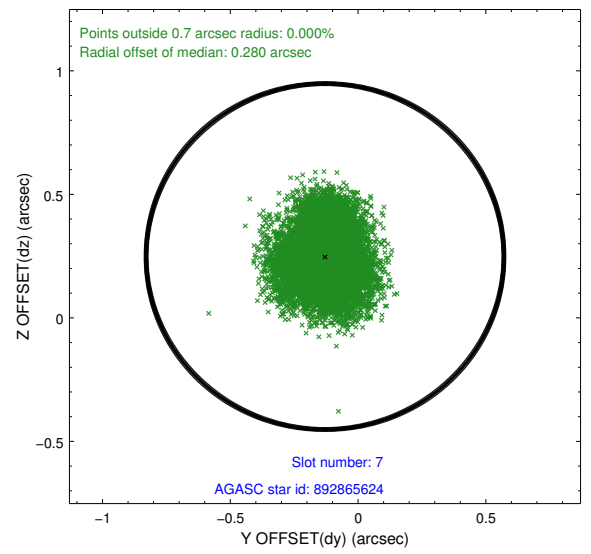
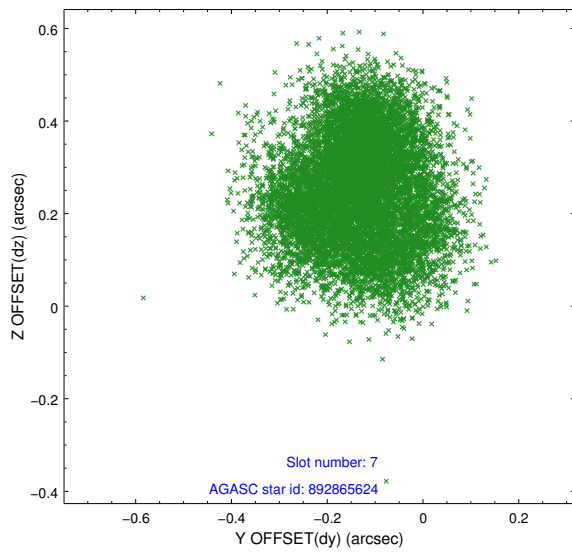
2.4.3 Slot 5



2.4.4 Slot 6

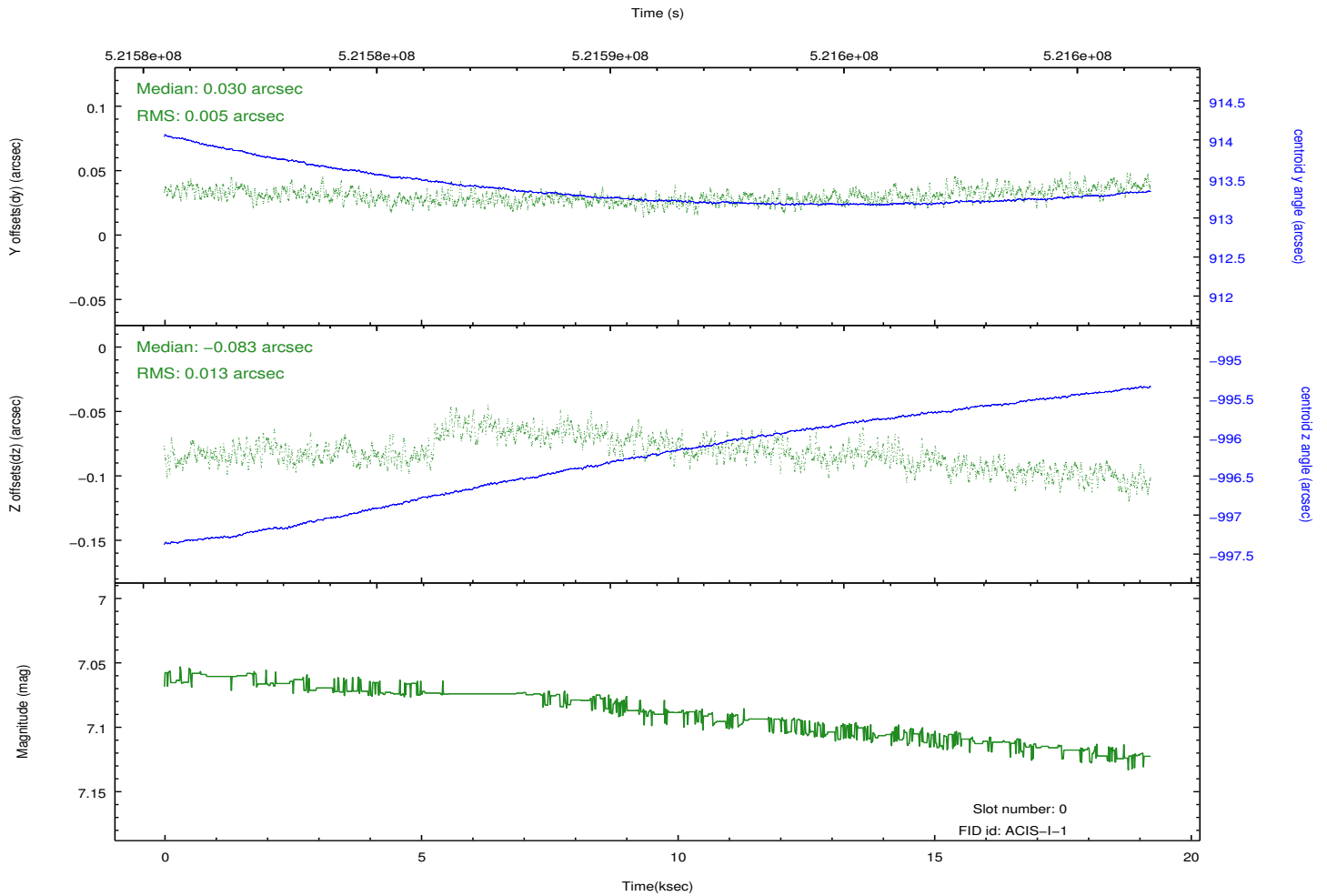
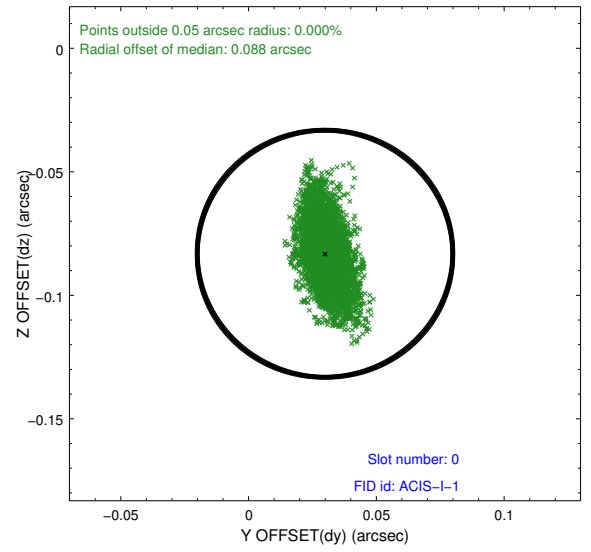
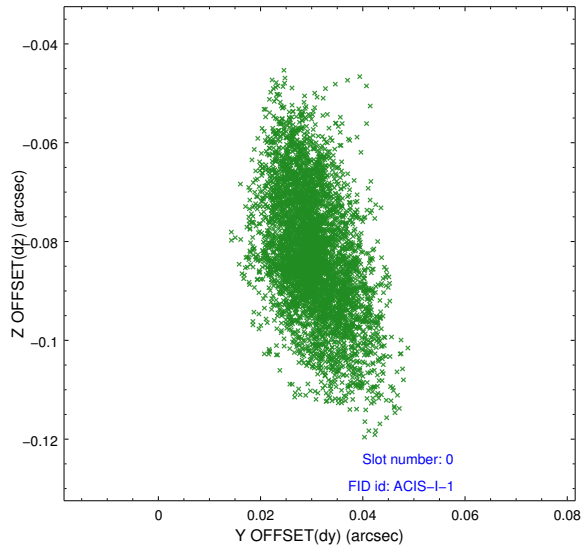


2.4.5 Slot 7

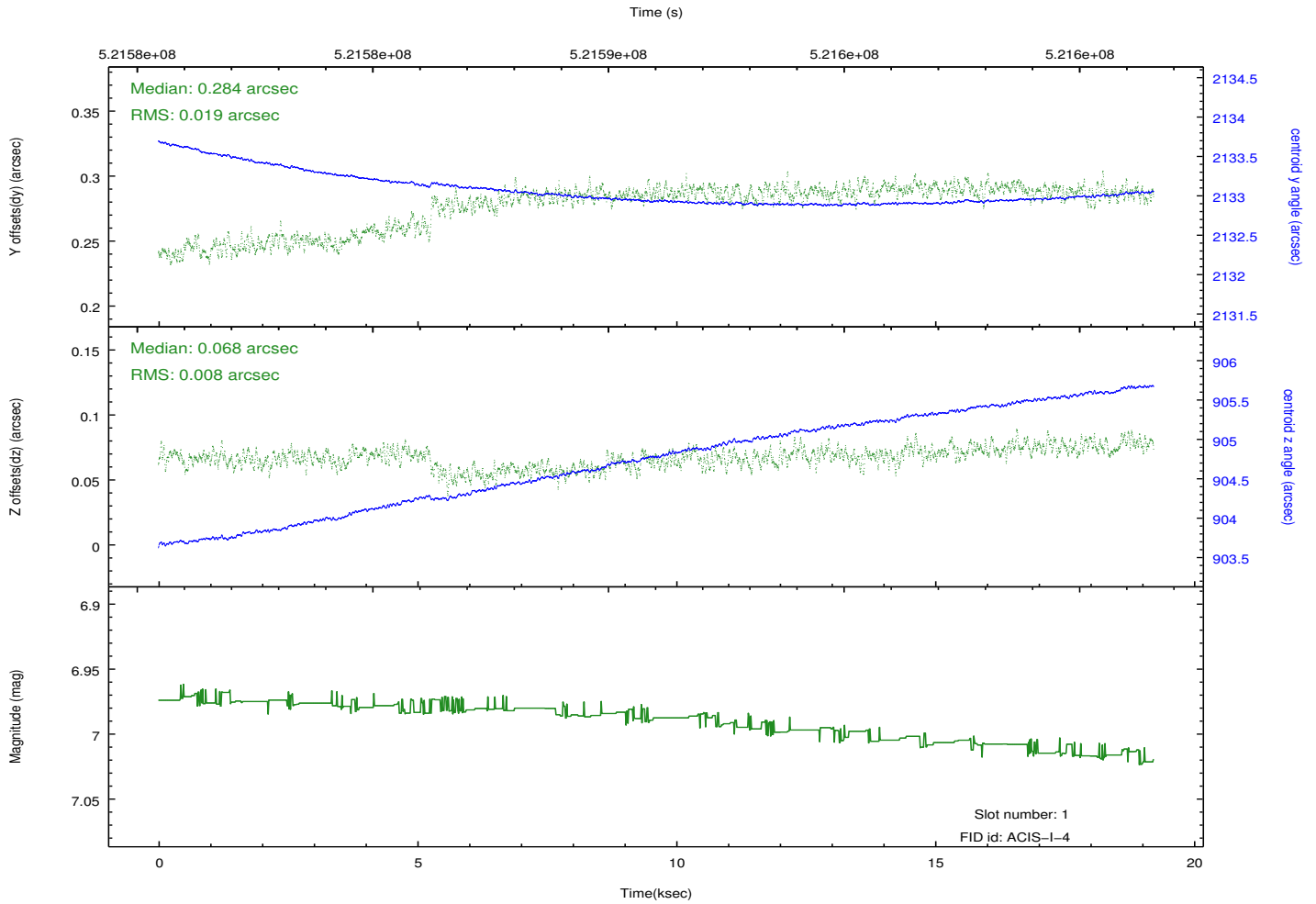
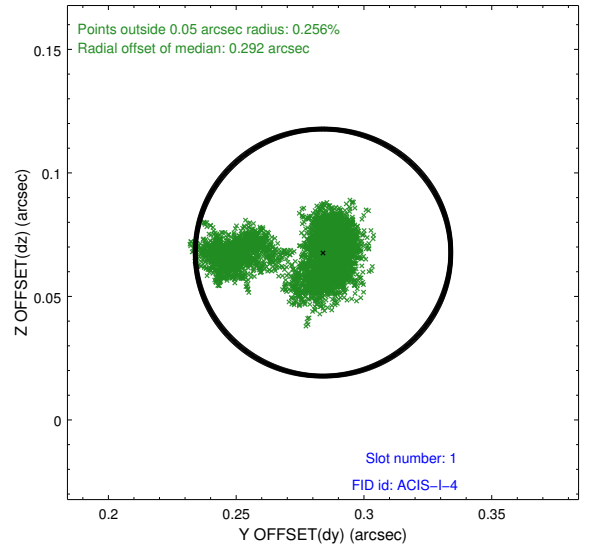
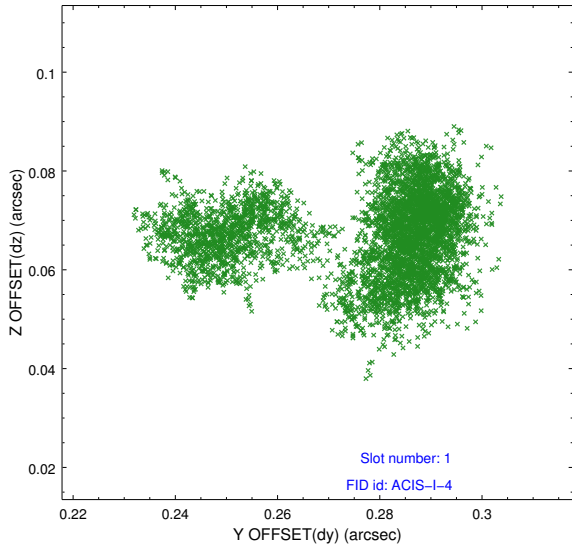


2.5 FID Slots

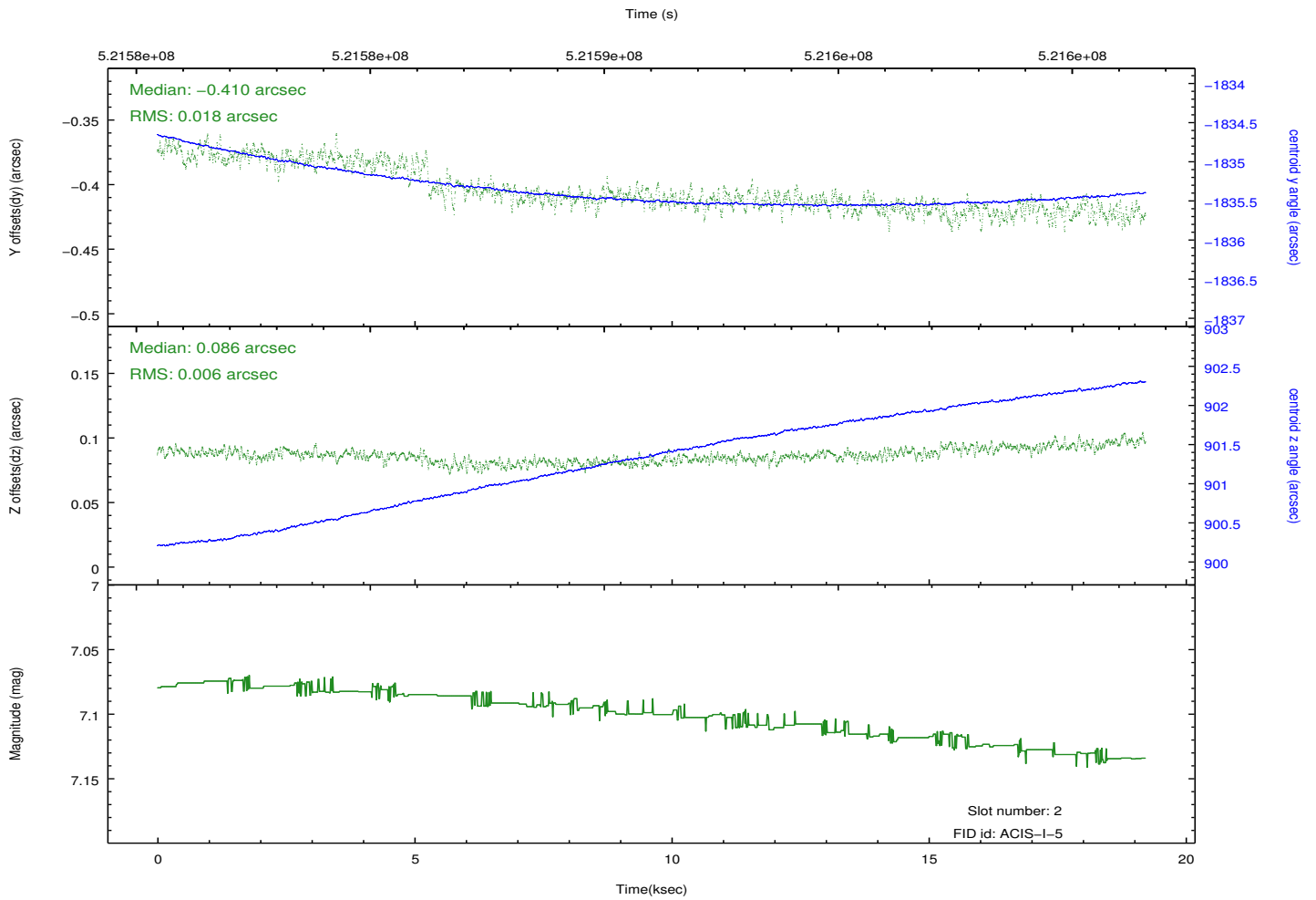
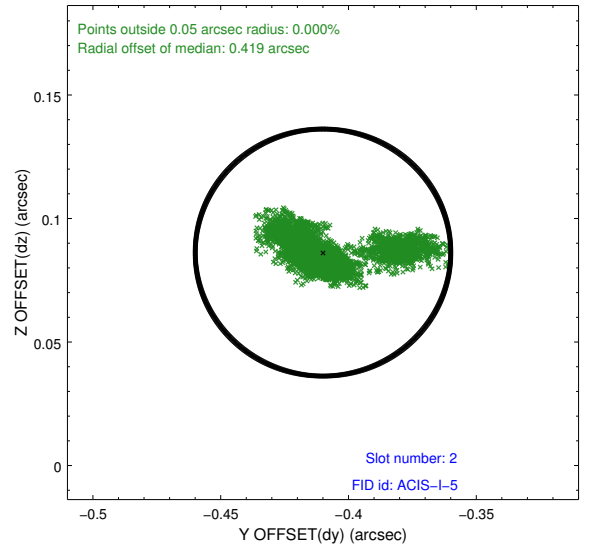
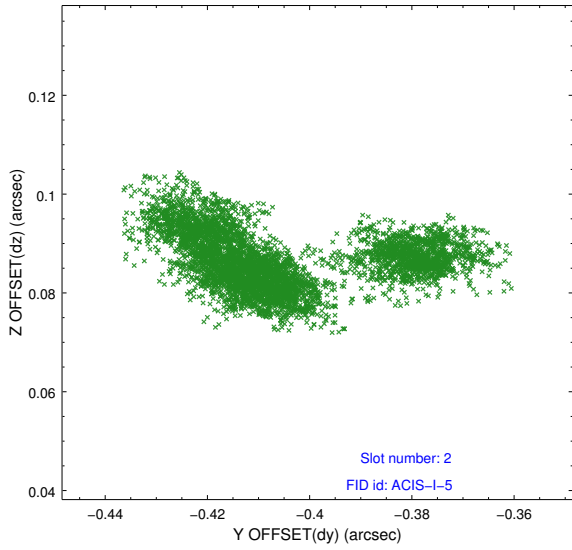
2.5.1 Slot 0



2.5.2 Slot 1



2.5.3 Slot 2



A Summary

A.1 Status

V&V Scientist	Beth Sundheim
V&V Date (YYYY-MM-DD)	2014.07.14
V&V Edition	1
V&V Disposition and Status	OK
V&V Charge Time	19.153867743313

A.2 Comments

Joint proposal with NRAO.