

V&V Reference Report

L2 ASCDS Version : 8.4.5

Observation 1715 - L2 Version 5
Chandra X-Ray Center

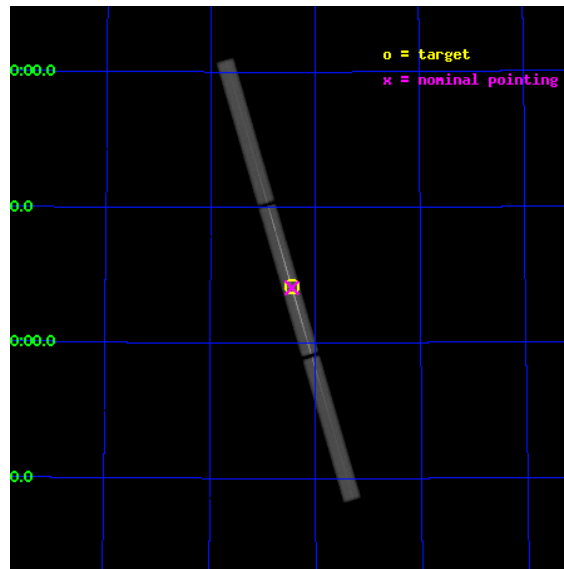
L2 Processing Date : Aug 28 2012

Contents

1	Front	2
2	OBI	3
2.1	OBI	3
2.1.1	Images	3
2.1.2	Parameters	4
2.1.3	Events	4
2.2	Compared Parameters	5
2.3	Aspect	6
2.4	Star Slots	9
2.4.1	Slot 3	9
2.4.2	Slot 4	10
2.4.3	Slot 5	11
2.4.4	Slot 6	12
2.4.5	Slot 7	13
2.5	FID Slots	14
2.5.1	Slot 0	14
2.5.2	Slot 1	15
2.5.3	Slot 2	16
3	Gratings	17
3.1	LETG Arm	17
A	Summary	19
A.1	Status	19
A.2	Comments	19

1 Front

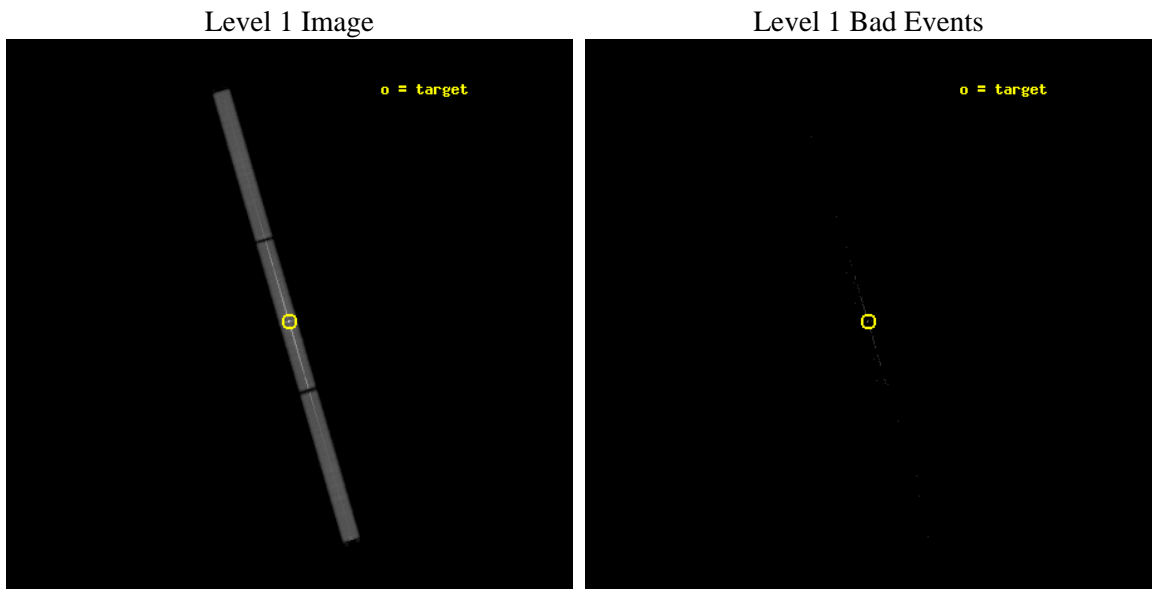
seq_num	700266	Sequence number
obs_id	1715	Observation id
title	X-RAYING THE BRIGHTEST AGN IN THE SKY WITH THE CHANDRA GRATINGS	Pr
observer	Dr Antonella Fruscione	Principal investigator
object	MRK 421	Source name
ra_targ	166.11375	Observer's specified target RA [deg]
dec_targ	38.208833	Observer's specified target Dec [deg]
ra_nom	166.11167062725	Nominal RA [deg]
dec_nom	38.204106826779	Nominal Dec [deg]
roll_nom	253.55546524547	Nominal Roll [deg]
revision	5	Processing version of data
ontime	19848.100729257	[s]
livetime	19710.866394859	Ontime multiplied by DTCOR
l2events	1213325	Number of level 2 events



2 OBI

2.1 OBI

2.1.1 Images



2.1.2 Parameters

obi_num	0	Obi number	sched_exp_time	20000.000000	[s] Scheduled observation exposure time
ascdsver	8.4.5	Processing system revision	ontime	19848.100730255	[s]
caldbver	4.5.1.1	 	l1events	1588697	Number of level 1 events
date	2012-08-28T06:20:40	Date and time of file creation			
revision	5	Processing version of data			

2.1.3 Events

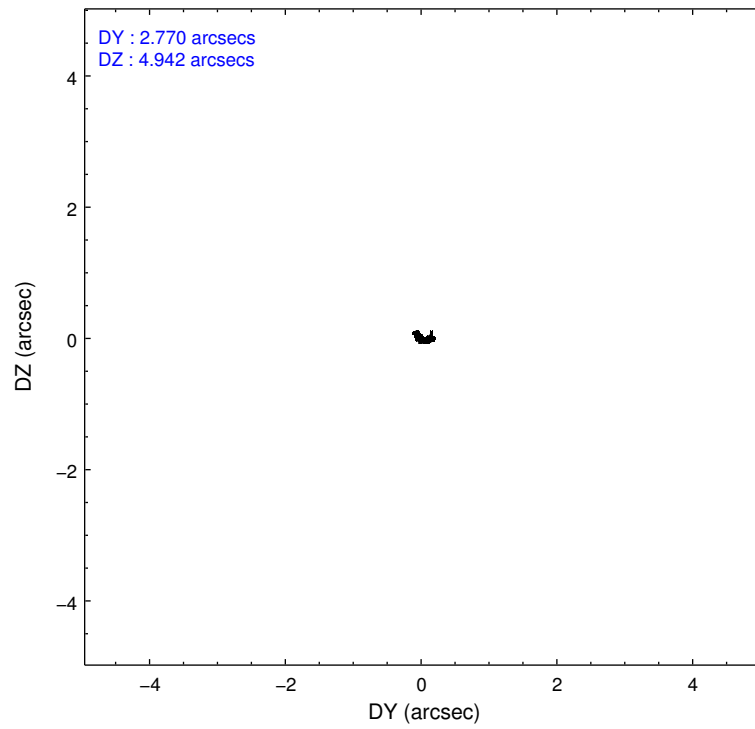
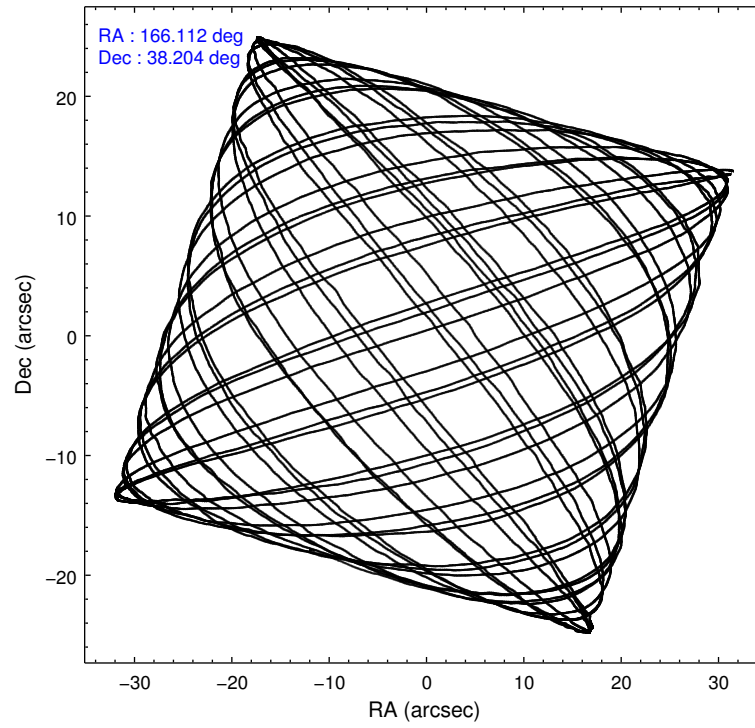
Level 1 Events

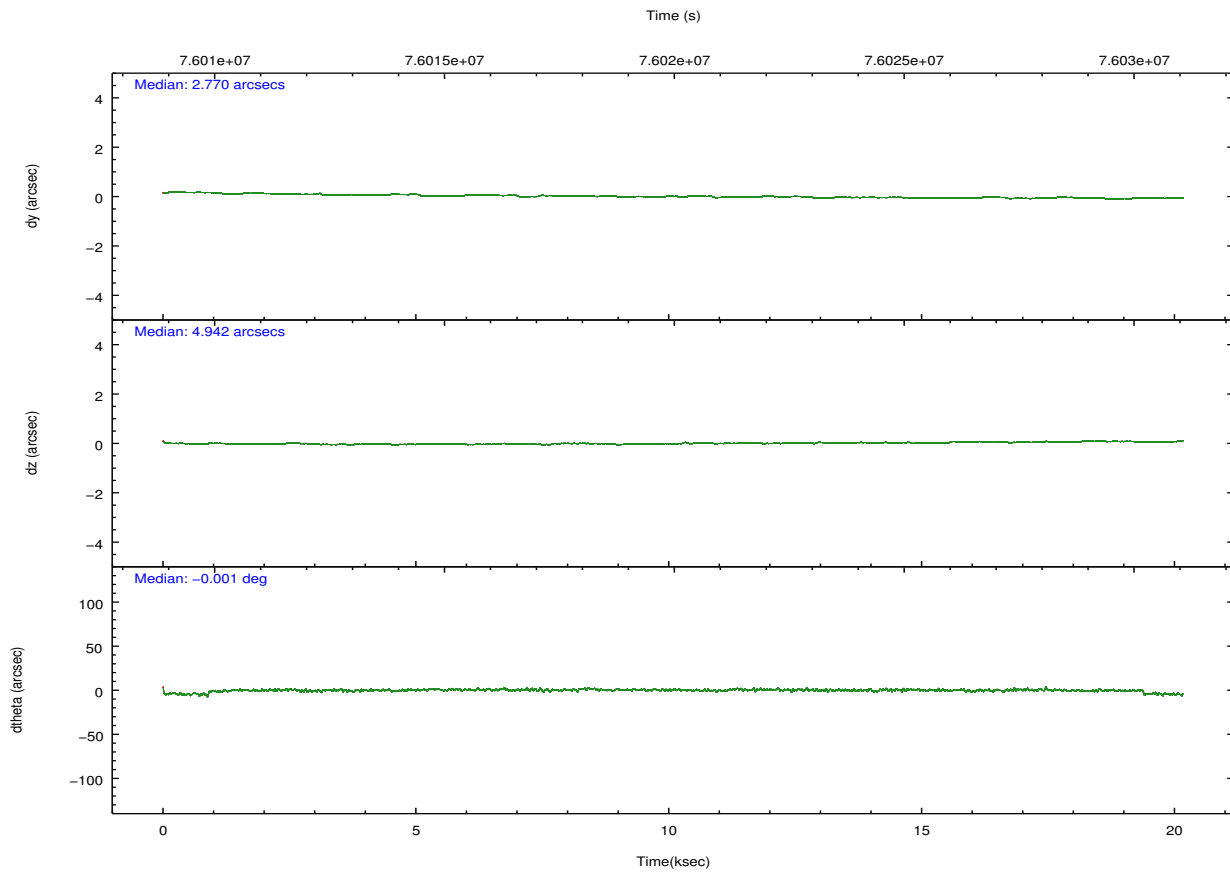
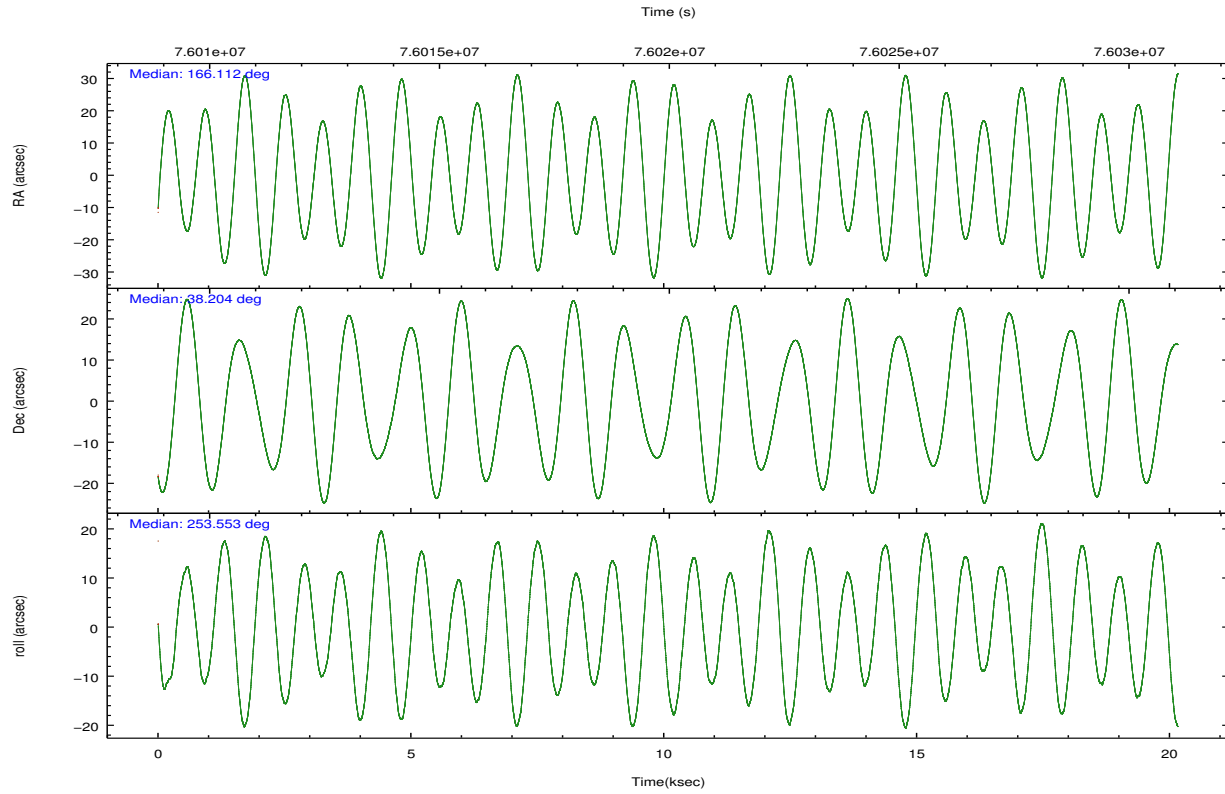
	segment 1	segment 2	segment 3
level 1 events	412045	754542	422110
rejected events	2152	2974	2290
rejected %	0%	0%	0%

2.2 Compared Parameters

Parameter	Planned	Actual	Parameter	Planned	Actual
Instrument	HRC	HRC	Obspar format version number	7	7
Detector	HRC-S	HRC-S	Obspar file type	PREDICTED	ACTUAL
Grating	LETG	LETG	Obspar update status	NONE	UPDATED
Data mode	OBSERVING	OBSERVING			
Observation mode	POINTING	POINTING			
[deg] Pointing RA	166.101618	166.1116706272495			
[deg] Pointing Dec	38.231819	38.20410682677895			
[deg] Pointing Roll	253.494345	253.5554652454707			
[mm] SIM focus pos	-1.429586	-1.428180813131781			
[mm] SIM defocus	0.1037507710433287	0.1051558262725154			
[mm] SIM translation stage pos	250.455976	250.466033080201			
[mm] SIM translation stage offset	0	-0.01005468664627074			
[s] Observation start time (MET)	76010055.184000	76009275.27455799			
Observation start date	2000-05-29T17:53:11	2000-05-29T17:41:15			
[s] Observation end time (MET)	76030055.184000	76031259.47536699			
Observation end date	2000-05-29T23:26:31	2000-05-29T23:47:39			

2.3 Aspect



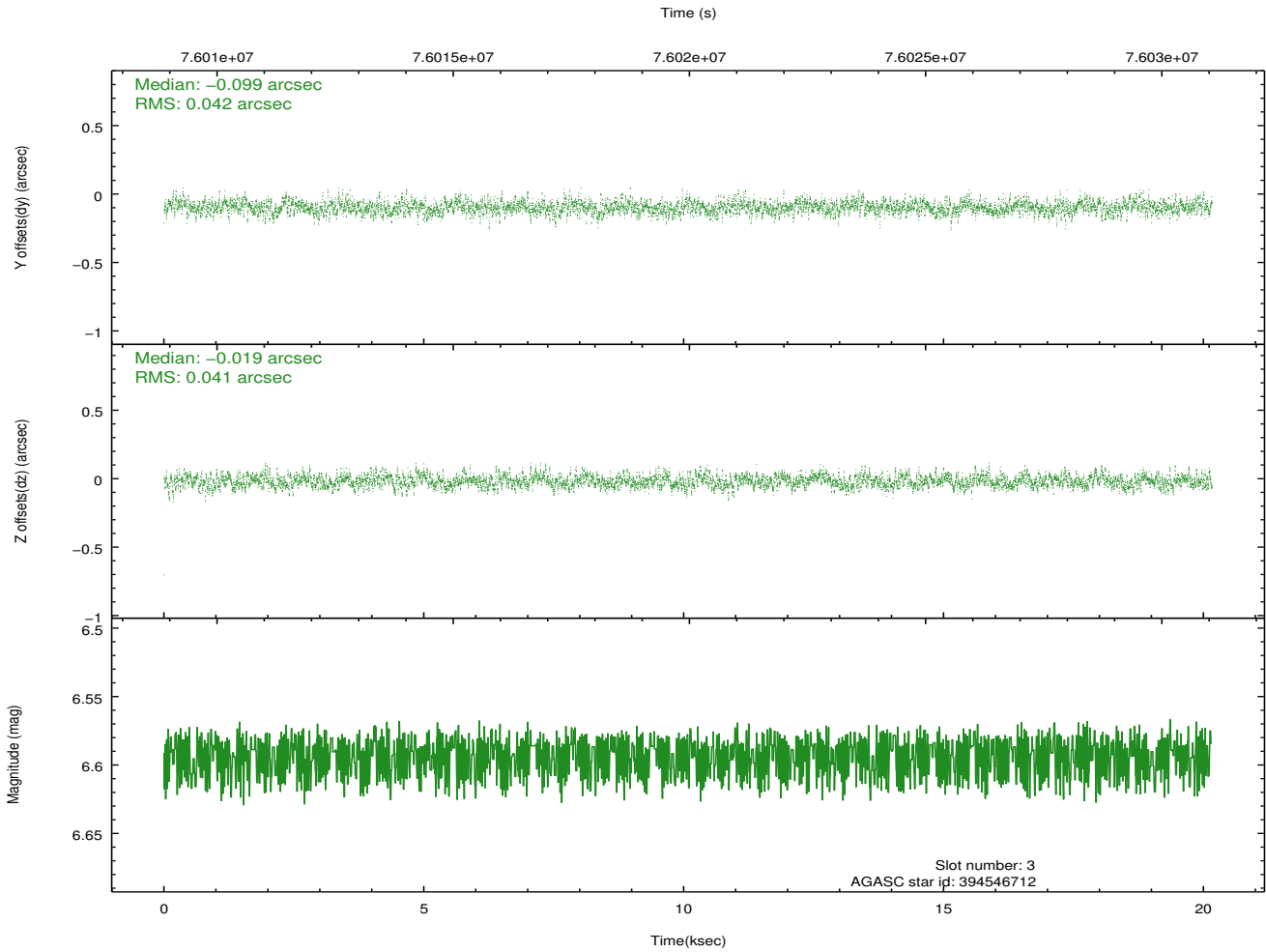
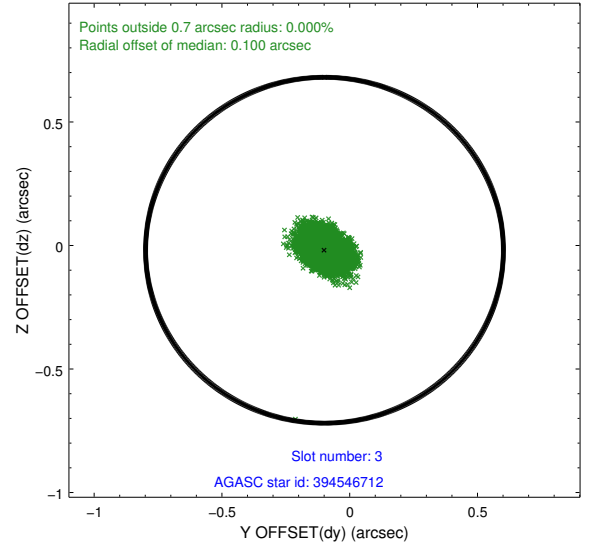
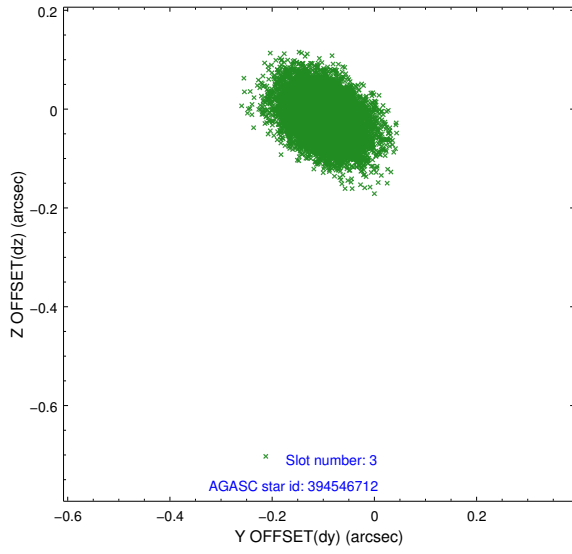


Slot Statistics

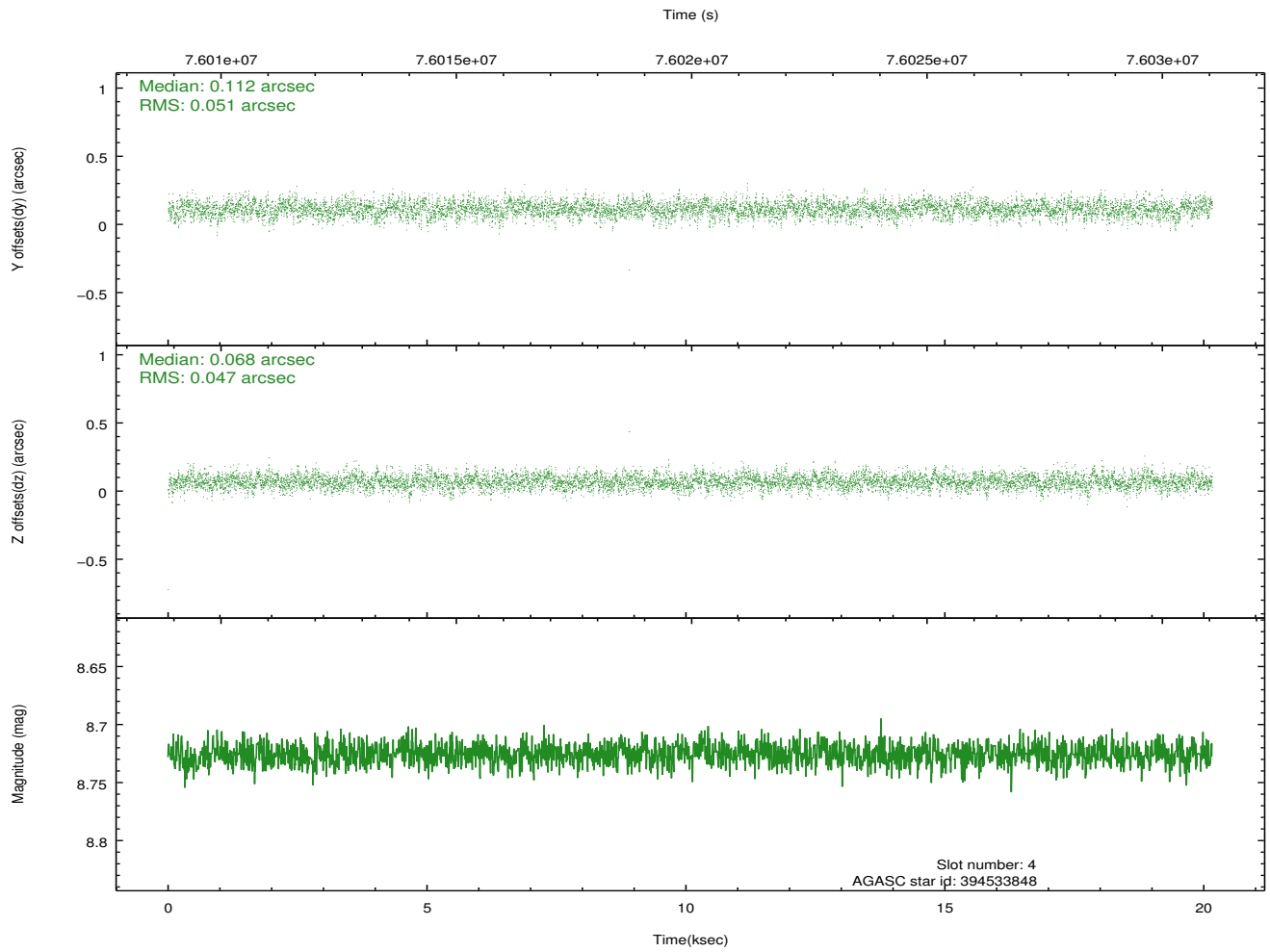
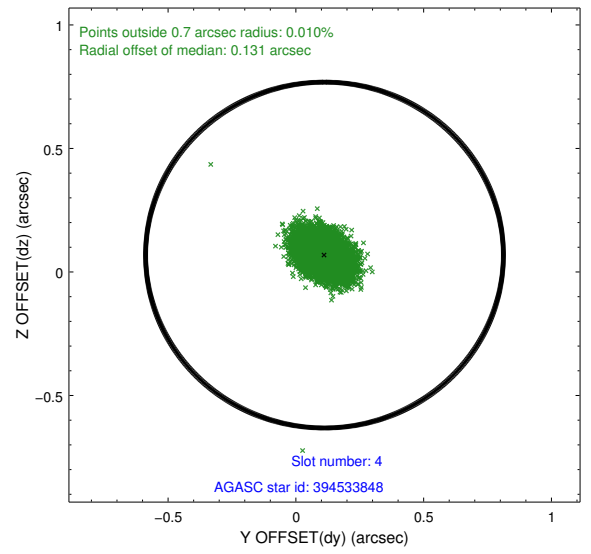
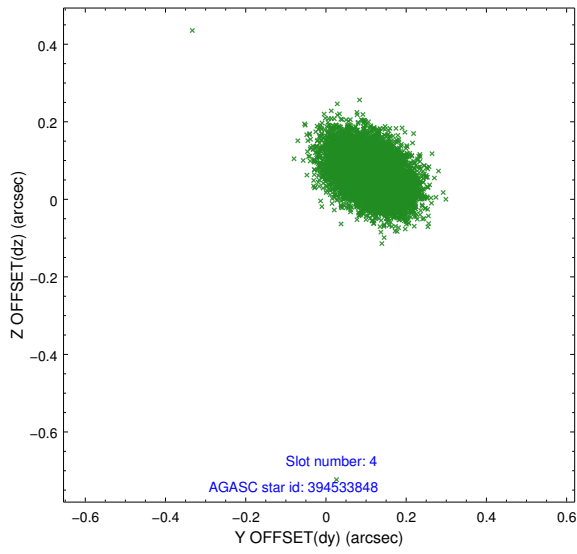
slot	status	id	mag	n_pts	med_dy	med_dz	dr1	dr2	ra	dec	mean_y	mean_z
0	FID	HRC-S-1	6.96	4919	0.132	-0.141	0.007	0.012	0.000000	0.000000	-1156.85	-453.41
1	FID	HRC-S-3	6.99	4919	0.114	-0.055	0.008	0.013	0.000000	0.000000	-1159.78	576.11
2	FID	HRC-S-4	6.94	4919	0.142	-0.101	0.005	0.009	0.000000	0.000000	1241.23	578.75
3	GUIDE	394546712	6.59	9837	-0.099	-0.019	0.062	0.103	166.451462	38.394357	-842.75	779.16
4	GUIDE	394533848	8.73	9837	0.112	0.068	0.072	0.122	166.382906	38.276007	-378.89	716.26
5	GUIDE	394543960	9.81	9832	0.217	0.019	0.101	0.163	165.802757	37.787371	1775.17	-361.27
6	GUIDE	394531368	10.00	9824	-0.082	-0.060	0.113	0.188	165.794613	38.837127	-1845.31	-1445.55
7	GUIDE	394530152	7.48	9836	-0.147	-0.005	0.065	0.109	166.075805	38.868252	-2175.88	-720.99

2.4 Star Slots

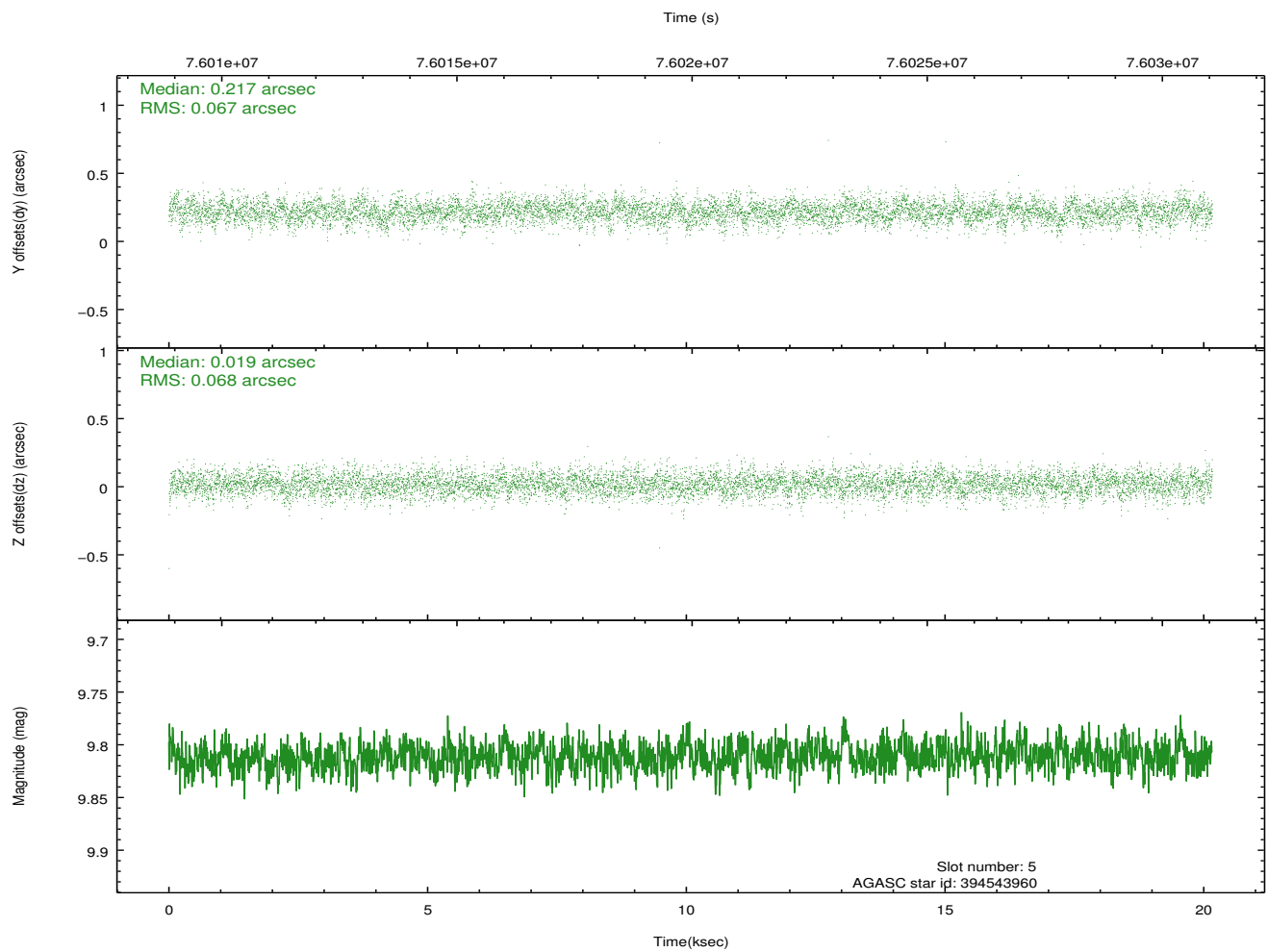
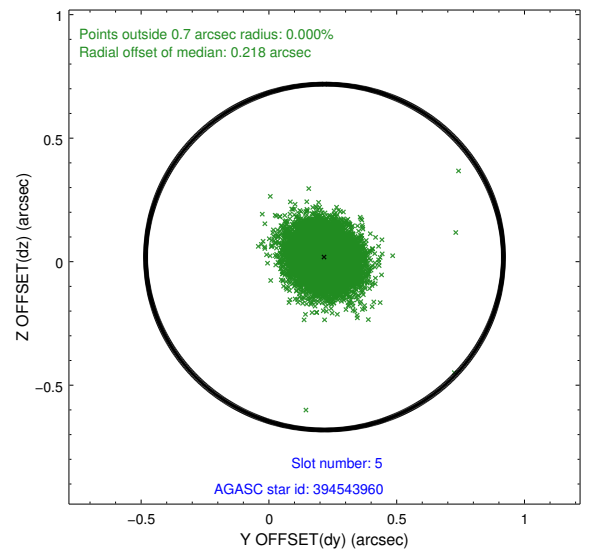
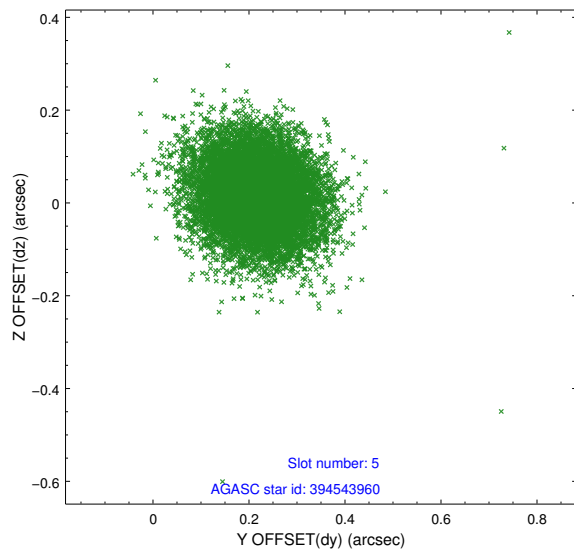
2.4.1 Slot 3



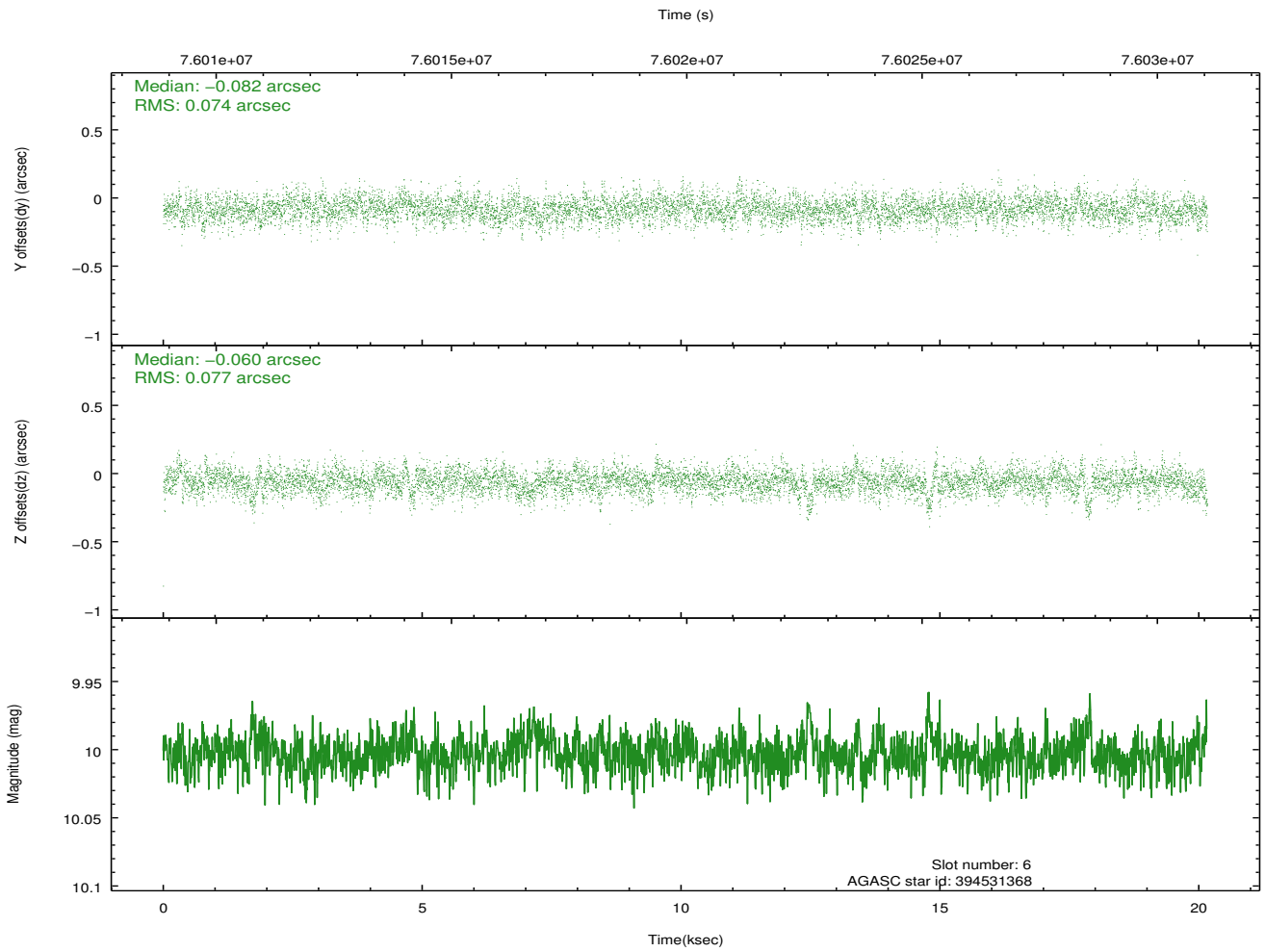
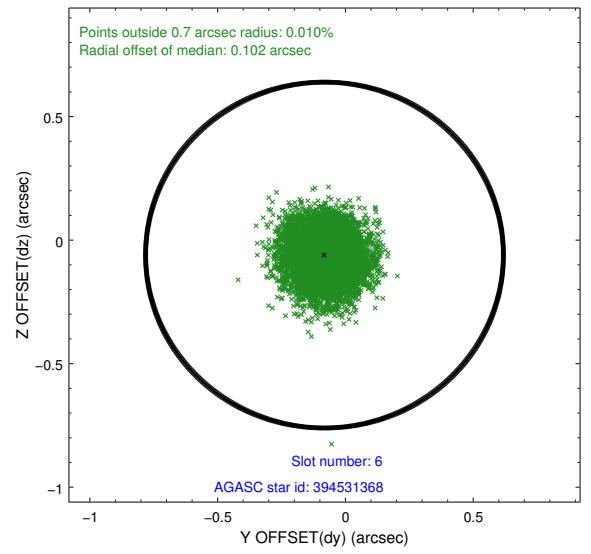
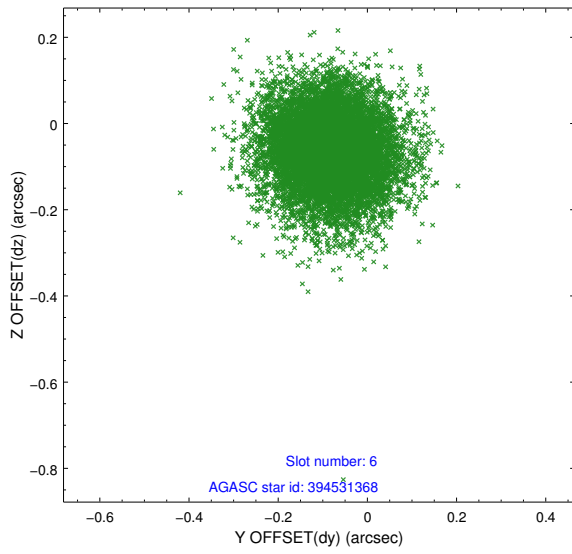
2.4.2 Slot 4



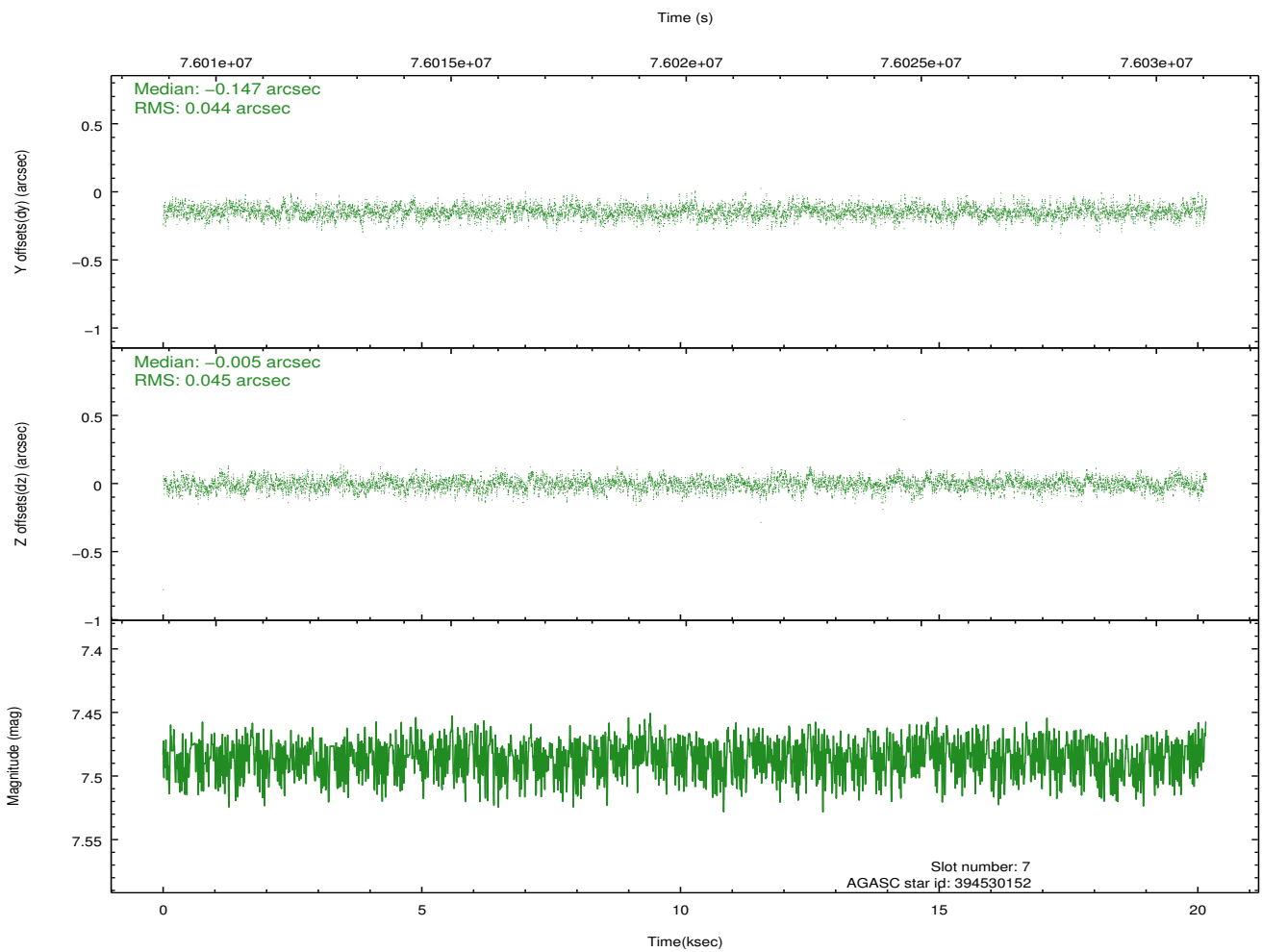
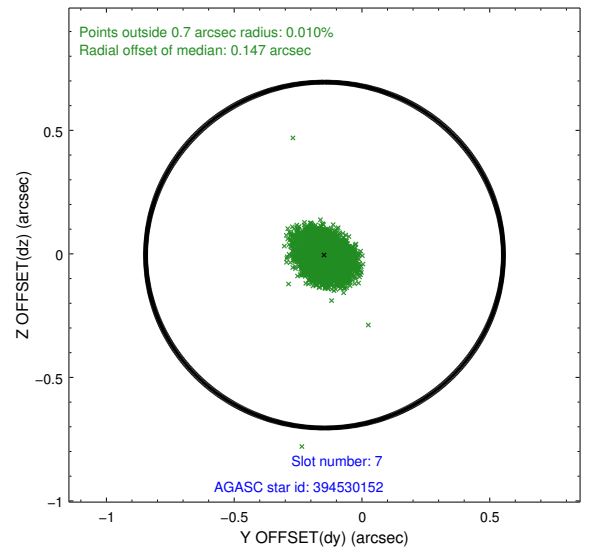
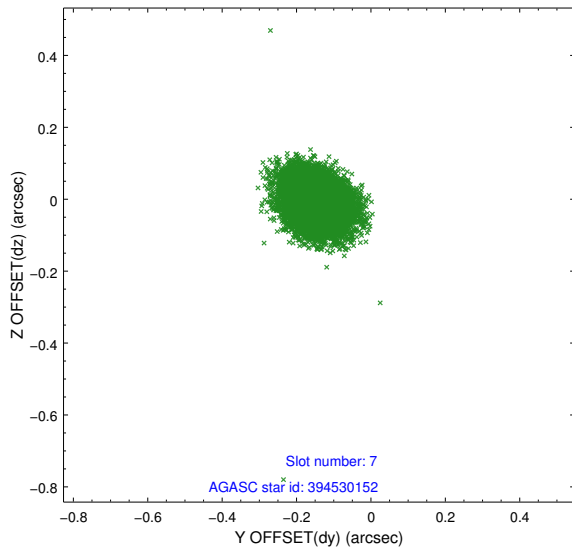
2.4.3 Slot 5



2.4.4 Slot 6

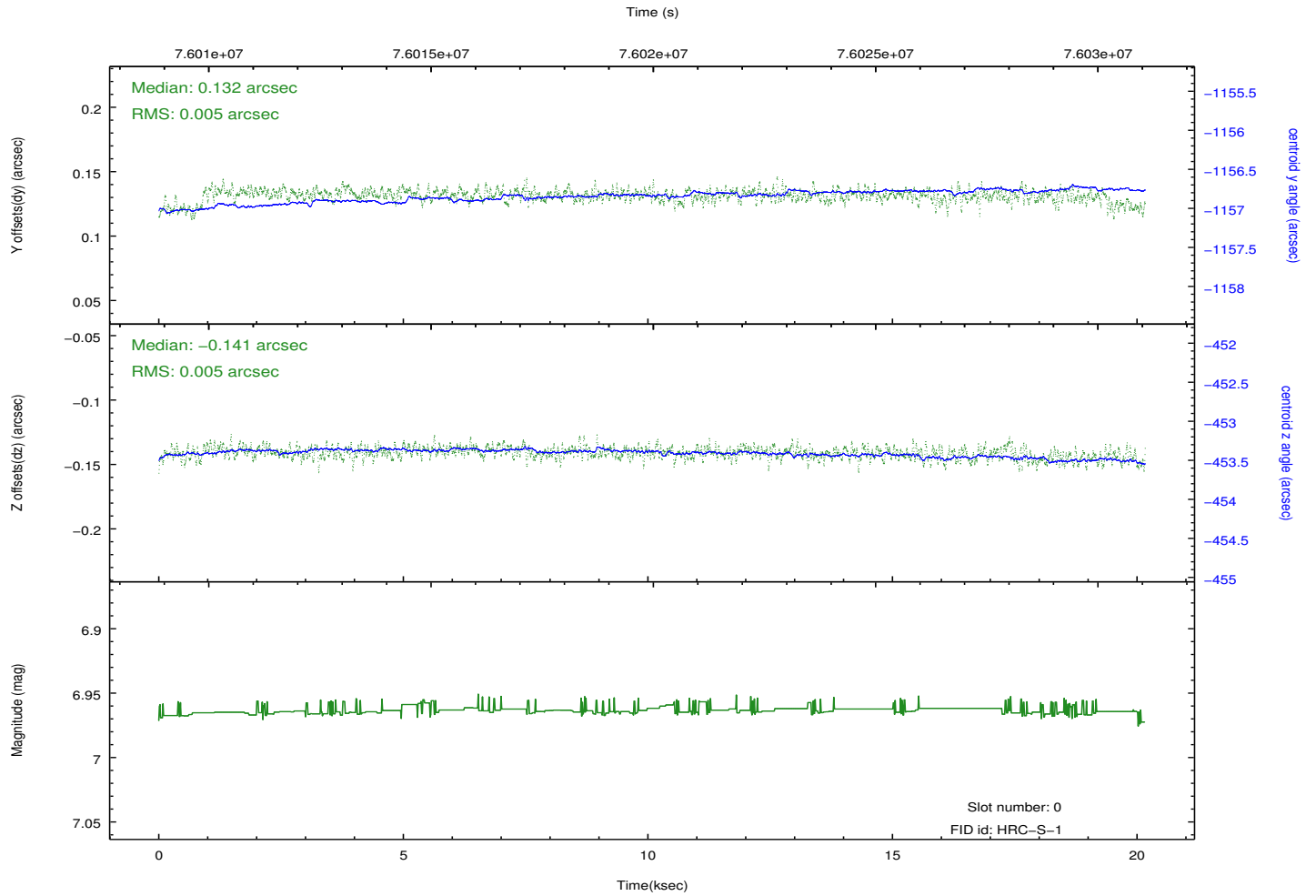
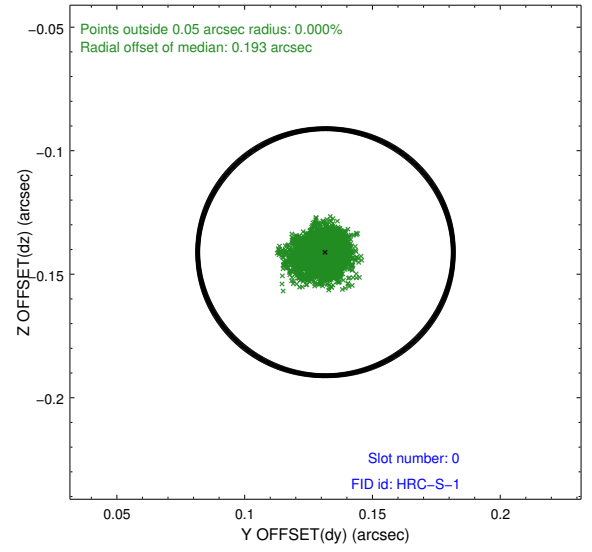
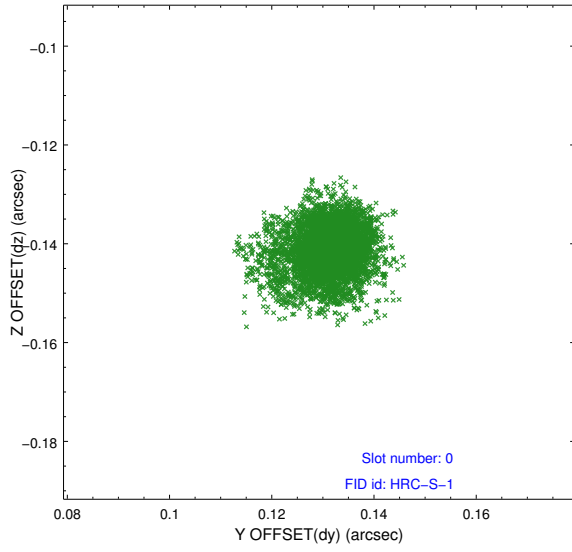


2.4.5 Slot 7

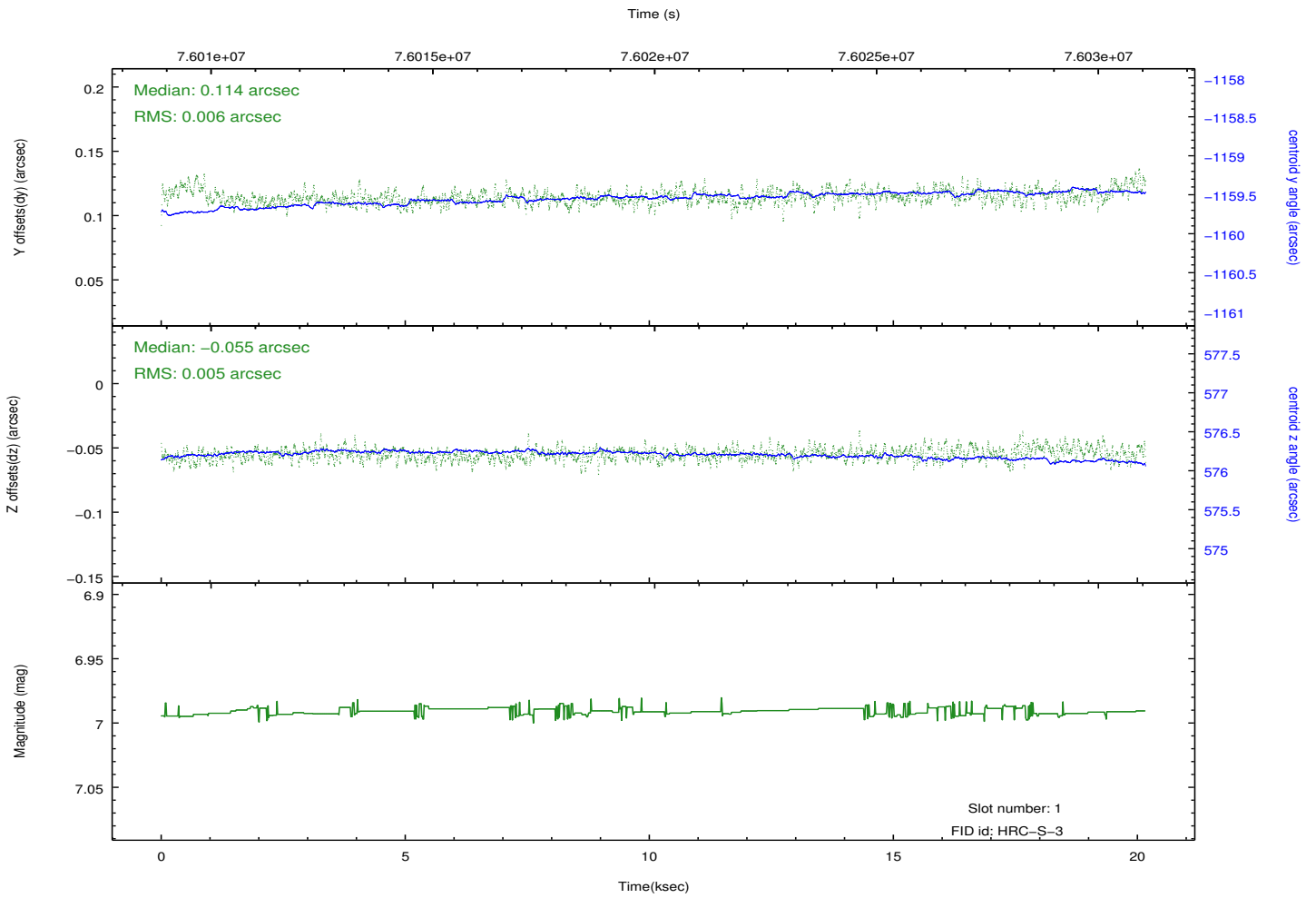
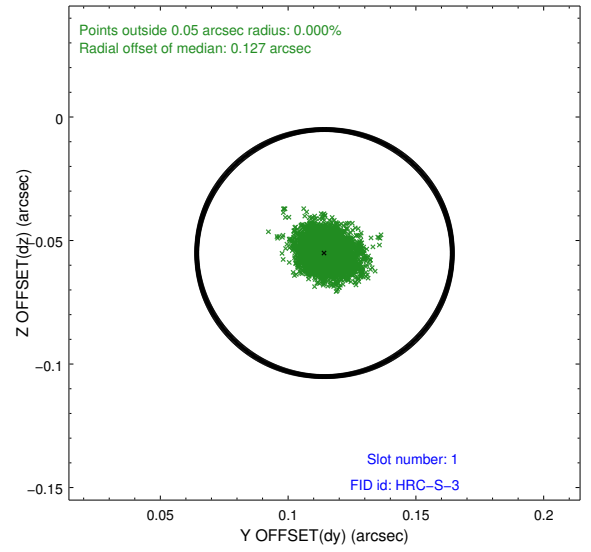
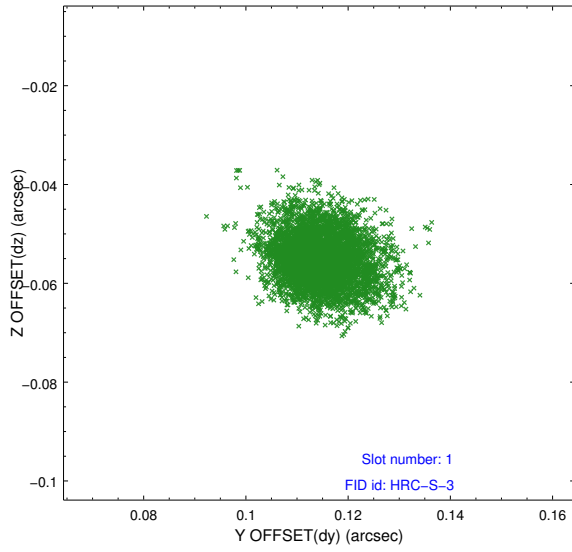


2.5 FID Slots

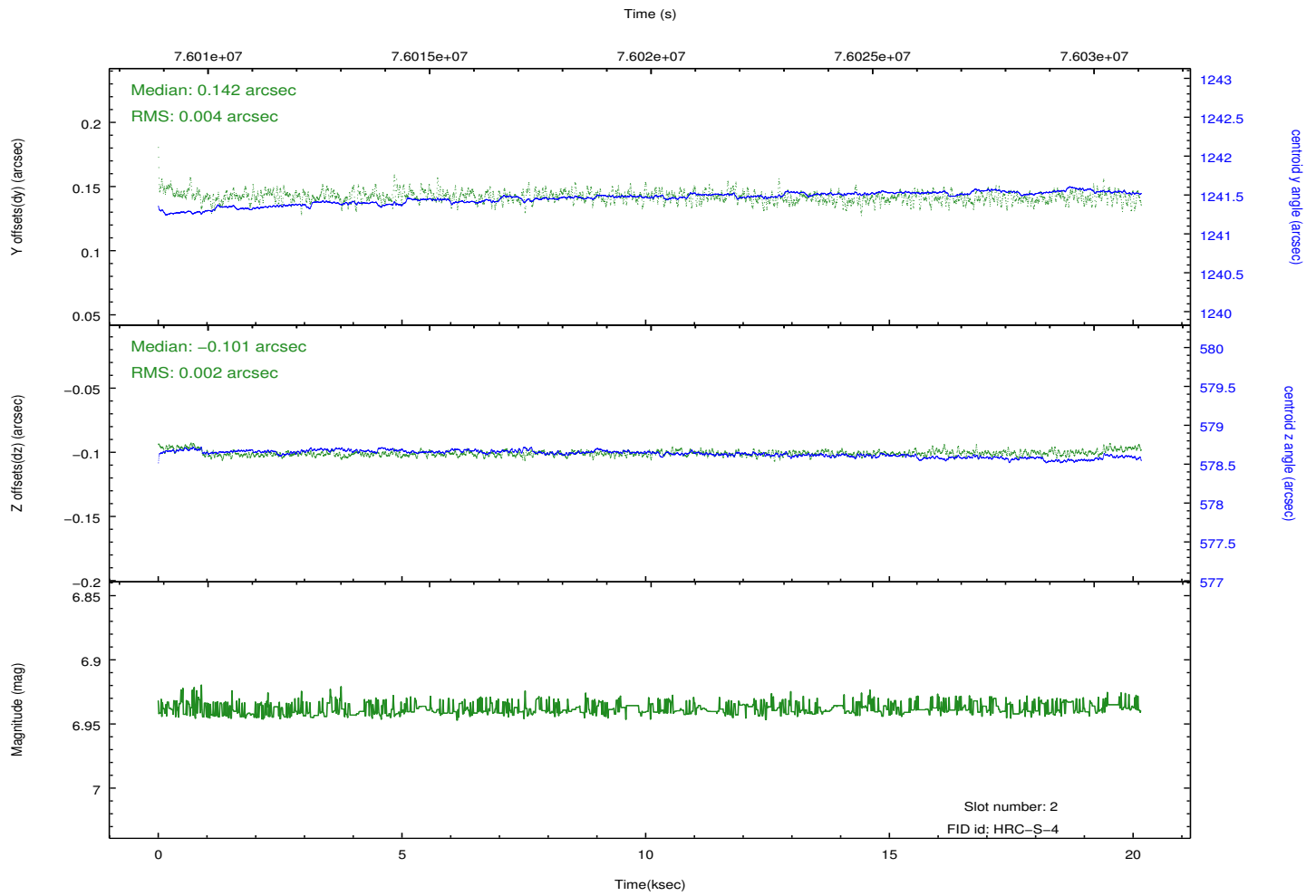
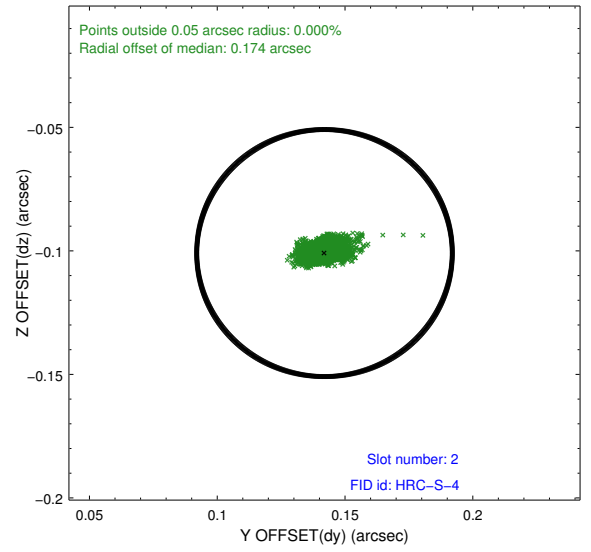
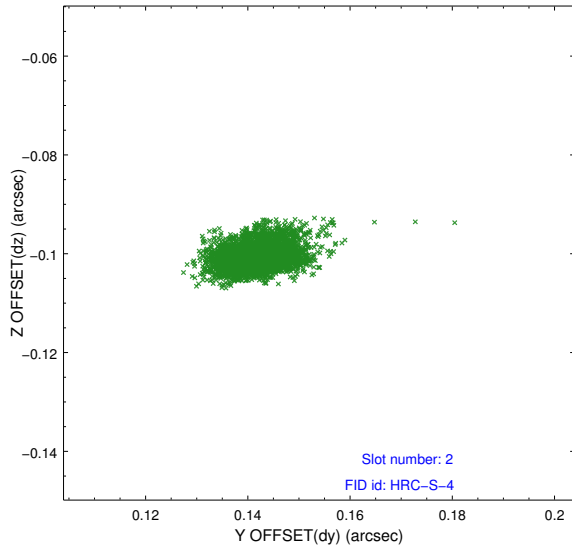
2.5.1 Slot 0



2.5.2 Slot 1

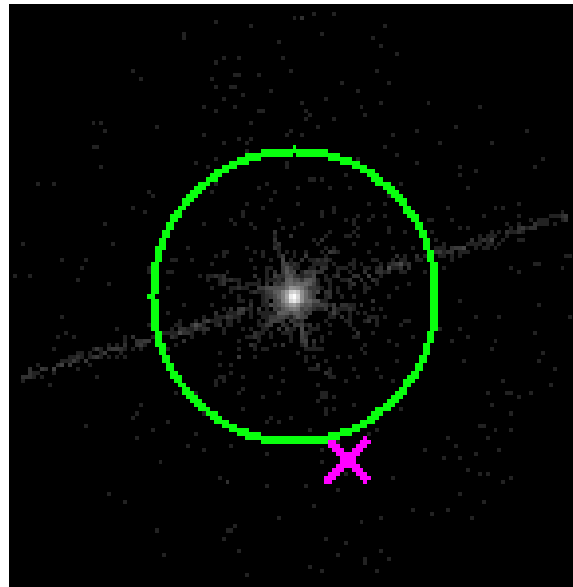


2.5.3 Slot 2

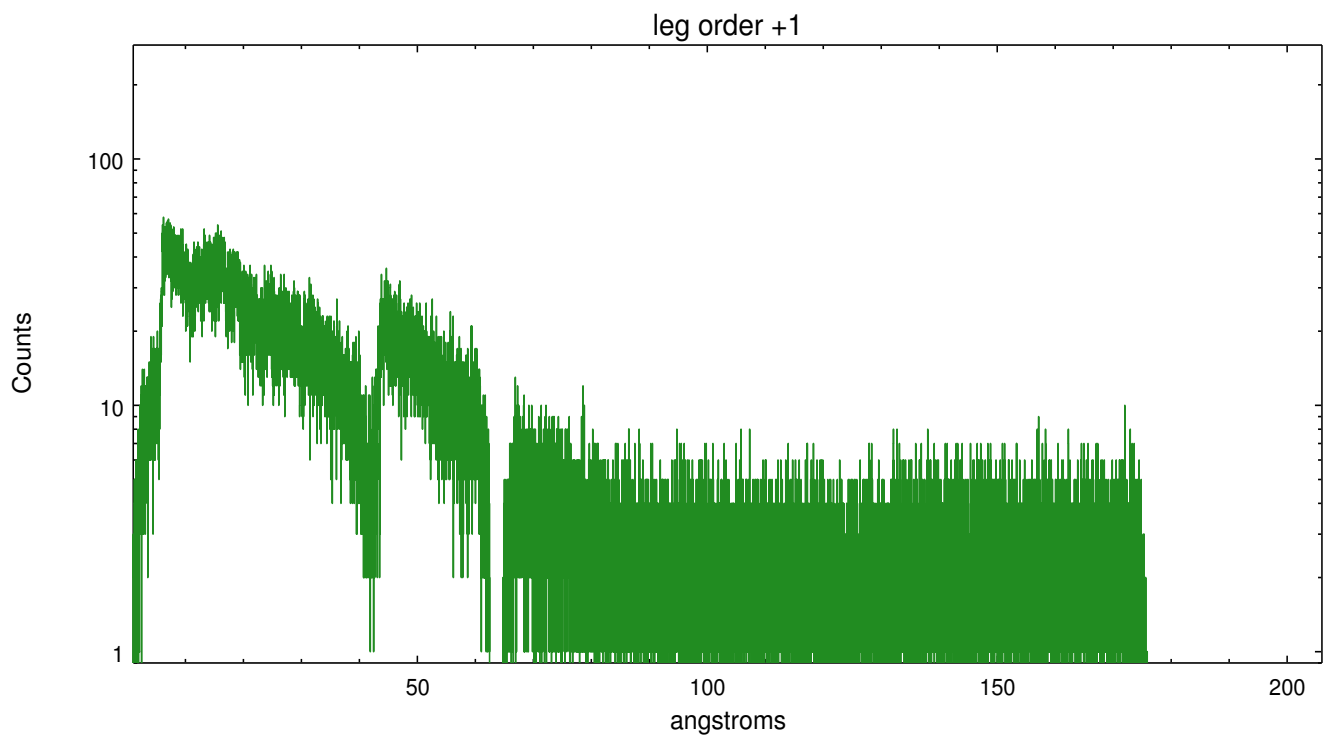
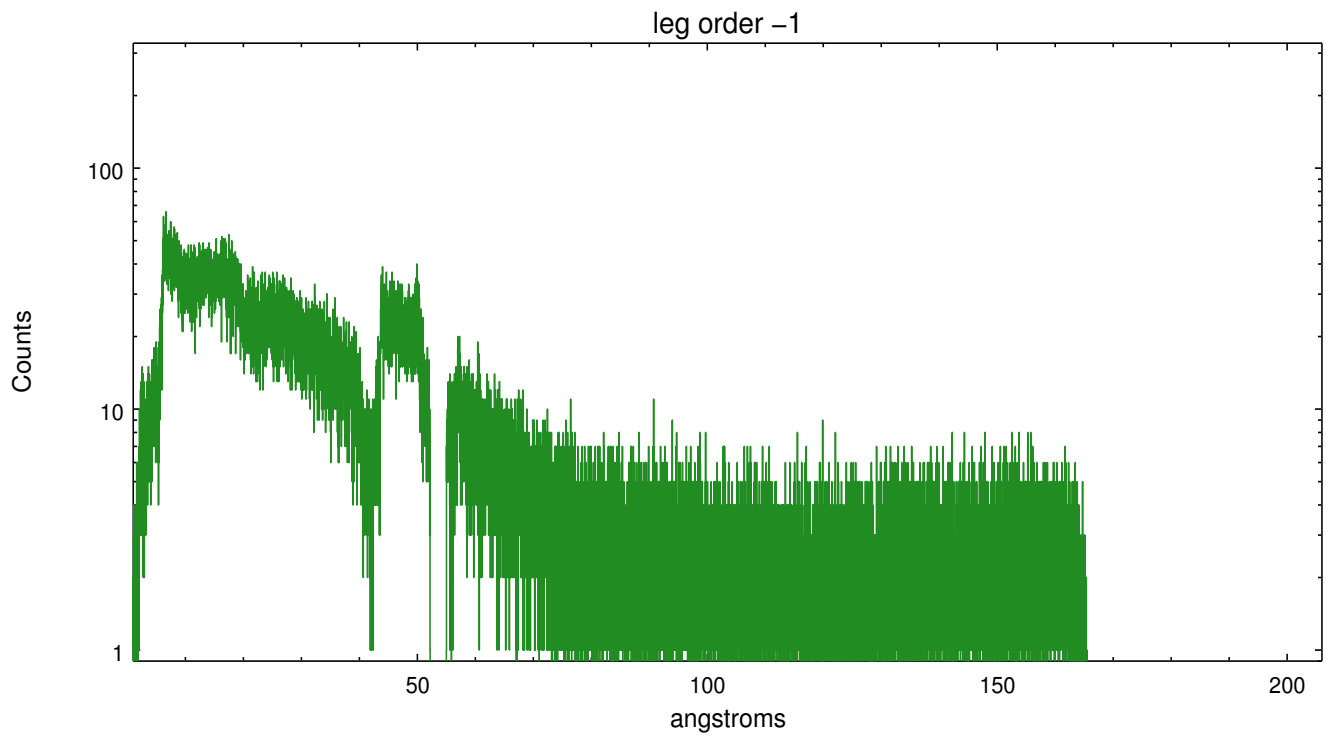


3 Gratings

3.1 LETG Arm



LETG Zero Order



A Summary

A.1 Status

V&V Scientist	Joy Nichols
V&V Date (YYYY-MM-DD)	2012.08.29
V&V Edition	1
V&V Disposition and Status	OK
V&V Charge Time	19.839

A.2 Comments