

V&V Reference Report

L2 ASCDS Version : 8.4.5

Observation 1725 - L2 Version 4
Chandra X-Ray Center

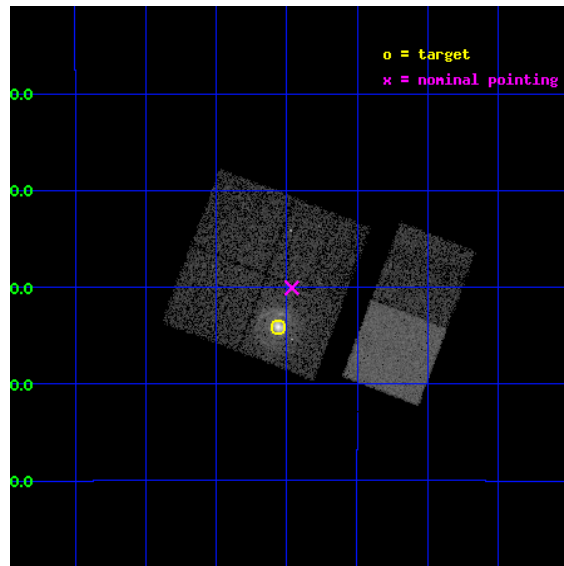
L2 Processing Date : Aug 28 2012

Contents

1	Front	2
2	OBI	3
2.1	OBI	3
2.1.1	Images	3
2.1.2	Bias	3
2.1.3	Parameters	4
2.1.4	Events	4
2.2	Compared Parameters	5
2.3	Aspect	6
2.4	Star Slots	9
2.4.1	Slot 3	9
2.4.2	Slot 4	10
2.4.3	Slot 5	11
2.4.4	Slot 6	12
2.4.5	Slot 7	13
2.5	FID Slots	14
2.5.1	Slot 0	14
2.5.2	Slot 1	15
2.5.3	Slot 2	16
A	Summary	17
A.1	Status	17
A.2	Comments	17

1 Front

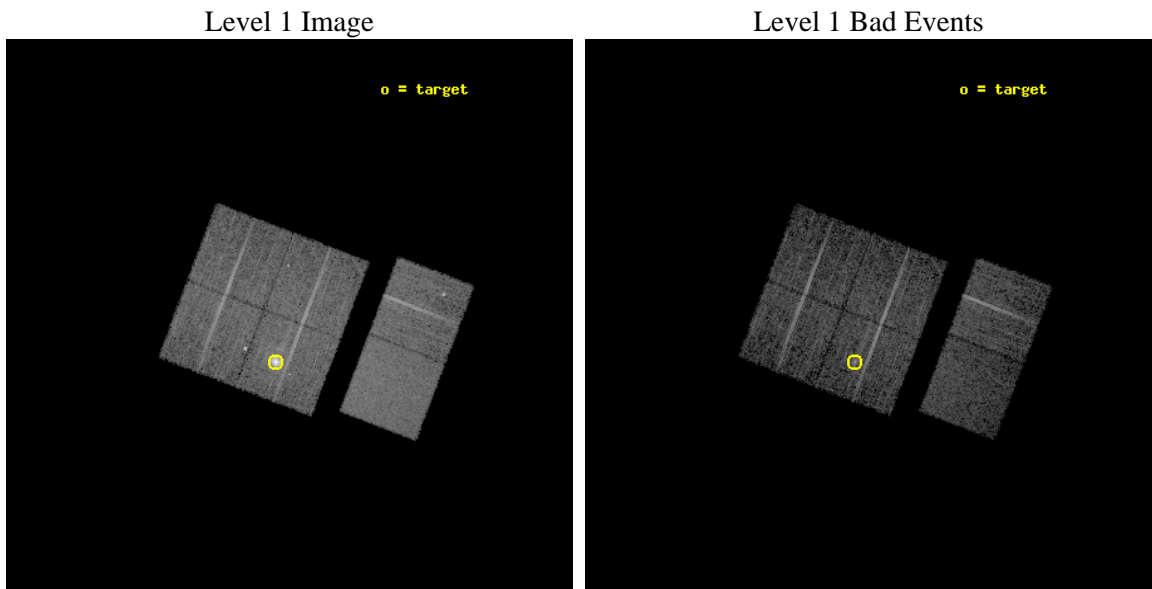
seq_num	590178	Sequence number
obs_id	1725	Observation id
title	HRC RESPONSE TO CONTINUUM SOURCE.	Proposal title
observer	Dr. CXC Calibration	Principal investigator
object	G21.5-0.9 [Chip I3, T=120, Offsets=-4,0,2]	Source name
dtcycle	0	
cycle	P	events from which exps? Prim/Second/Both
ra_targ	278.389583	Observer's specified target RA [deg]
dec_targ	-10.568528	Observer's specified target Dec [deg]
ra_nom	278.36583765467	Nominal RA [deg]
dec_nom	-10.501201003975	Nominal Dec [deg]
roll_nom	110.8840254718	Nominal Roll [deg]
revision	4	Processing version of data
ontime	7663.7840508968	Sum of GTIs [s]
livetime	7566.7406026676	Livetime [s]
ontime0	7663.6609309018	Sum of GTIs [s]
ontime1	7663.7019709051	Sum of GTIs [s]
ontime2	7663.7430408448	Sum of GTIs [s]
ontime3	7663.7840508968	Sum of GTIs [s]
ontime6	7663.8661309034	Sum of GTIs [s]
ontime7	7663.8250909001	Sum of GTIs [s]
l2events	76538	Number of level 2 events



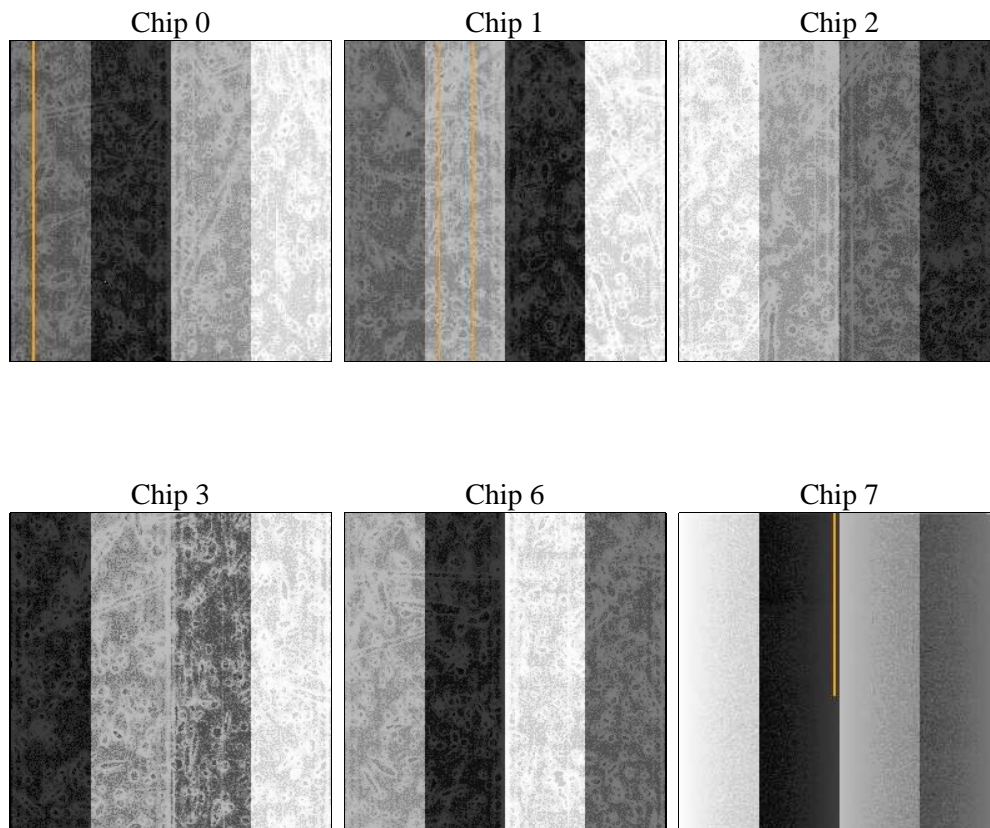
2 OBI

2.1 OBI

2.1.1 Images



2.1.2 Bias



2.1.3 Parameters

obi_num	0	Obi number	sched_exp_time	8000.000000	[s] Scheduled observation exposure time
ascdsver	8.4.5	Processing system revision	ontime	7663.7840508968	Sum of GTIs [s]
caldbver	4.5.1.1	 	ontime0	7663.6609309018	Sum of GTIs [s]
date	2012-08-28T04:40:13	Date and time of file creation	ontime1	7663.7019709051	Sum of GTIs [s]
revision	4	Processing version of data	ontime2	7663.7430408448	Sum of GTIs [s]
			ontime3	7663.7840508968	Sum of GTIs [s]
			ontime6	7663.8661309034	Sum of GTIs [s]
			ontime7	7663.8250909001	Sum of GTIs [s]
			l1events	317020	Number of level 1 events

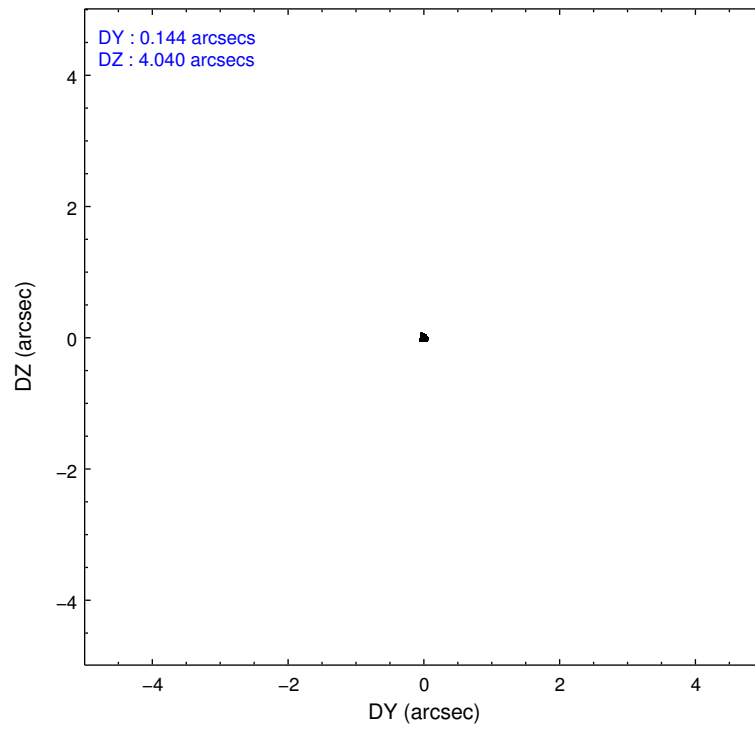
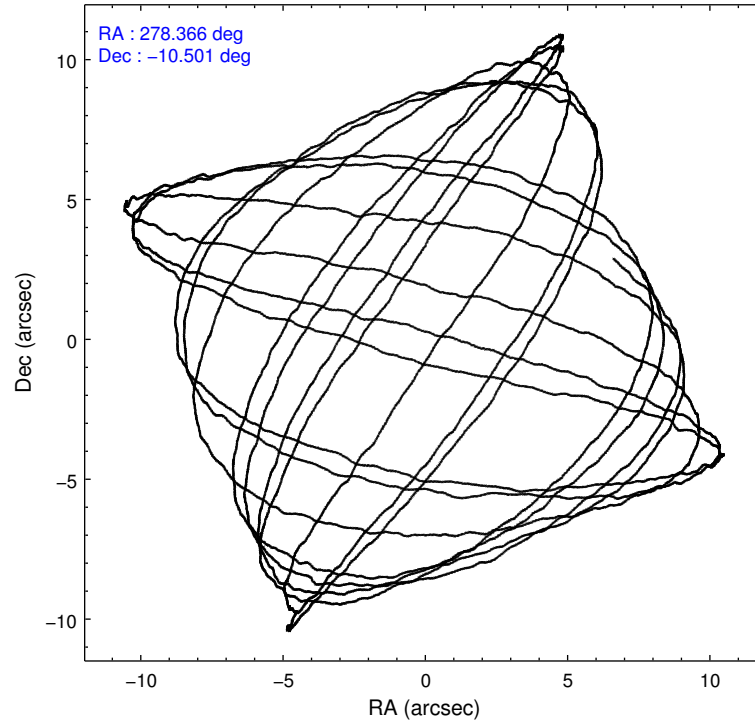
2.1.4 Events

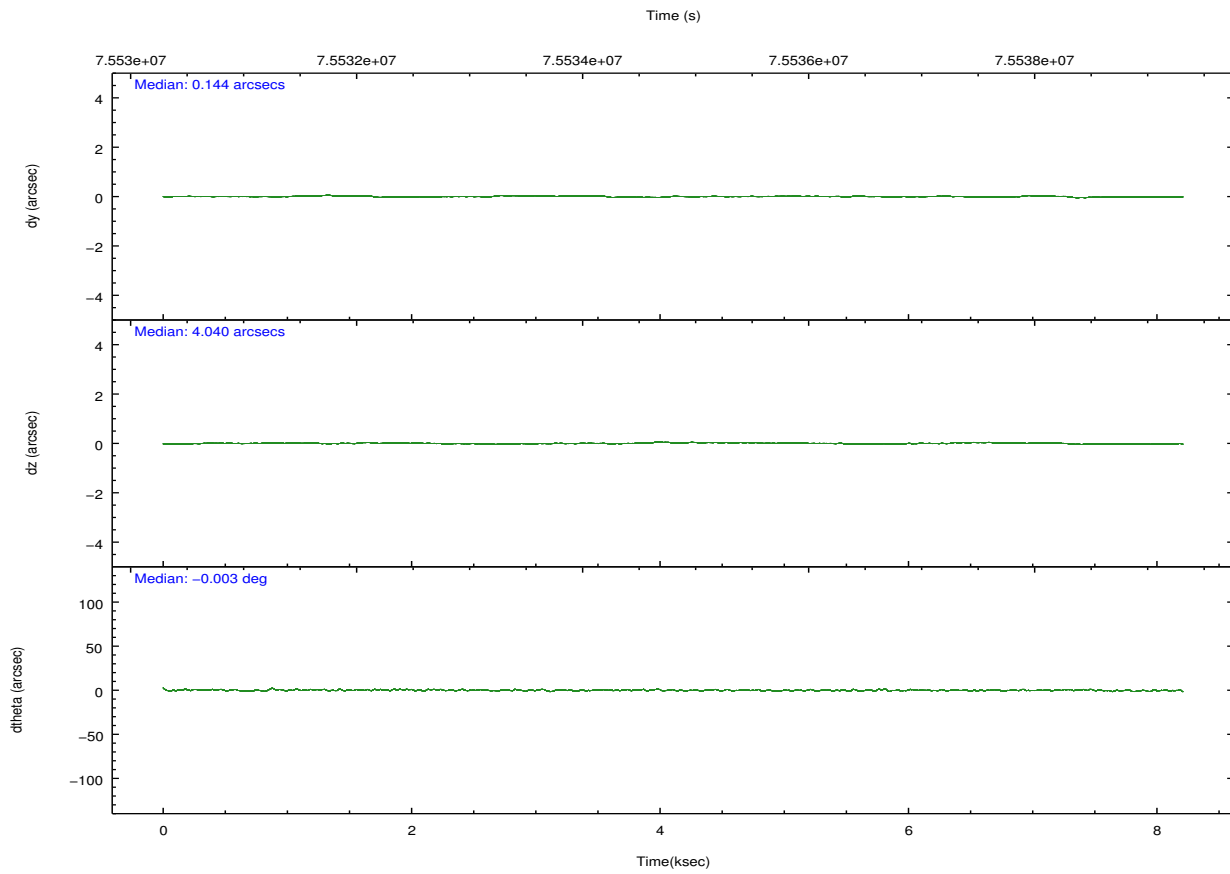
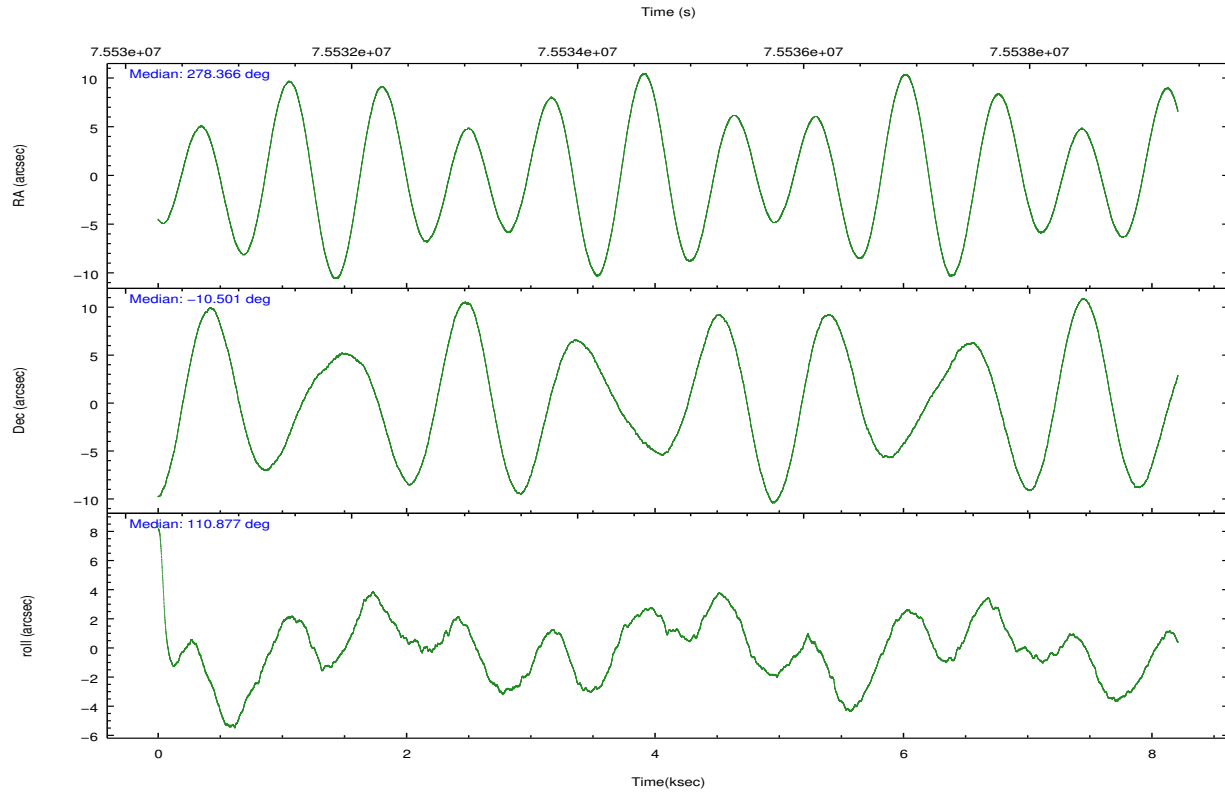
	ccd 0	ccd 1	ccd 2	ccd 3	ccd 6	ccd 7		ccd 0	ccd 1	ccd 2	ccd 3	ccd 6	ccd 7
level 1 events	42470	46618	48684	71987	50471	56790	grade 0 events	3087	4667	3372	20646	3660	2580
rejected events	35995	38259	41832	41759	43113	31093		7%	10%	6%	28%	7%	4%
rejected %	84%	82%	85%	58%	85%	54%	grade 1 events	17	26	21	188	29	45
								0%	0%	0%	0%	0%	0%
							grade 2 events	1319	1414	1334	4342	1486	5099
								3%	3%	2%	6%	2%	8%
							grade 3 events	529	571	533	1580	509	2301
								1%	1%	1%	2%	1%	4%
							grade 4 events	515	591	546	1550	549	2404
								1%	1%	1%	2%	1%	4%
							grade 5 events	1582	1559	1382	1810	1823	5127
								3%	3%	2%	2%	3%	9%
							grade 6 events	1027	1122	1069	2123	1161	13319
								2%	2%	2%	2%	2%	23%
							grade 7 events	34394	36668	40427	39748	41254	25915
								80%	78%	83%	55%	81%	45%

2.2 Compared Parameters

Parameter	Planned	Actual	Parameter	Planned	Actual
Instrument	ACIS	ACIS	Obspar format version number	7	7
Detector	ACIS-012367	ACIS-012367	Obspar file type	PREDICTED	ACTUAL
Grating	NONE	NONE	Obspar update status	NONE	UPDATED
Data mode	FAINT	FAINT	Number of optional ACIS chips dropped	0	0
Observation mode	POINTING	POINTING	On-chip summing requested	N	N
[deg] Pointing RA	278.387486	278.3658376546653	Subarray requested	NONE	NONE
[deg] Pointing Dec	-10.518712	-10.50120100397535	Alternating exposures requested	N	N
[deg] Pointing Roll	110.679286	110.8840254717981	[s] Primary exposure time	0.000000	3.2
[mm] SIM focus pos	-0.782348	-0.7809083437167272			
[mm] SIM defocus	0	0.001439871863259334			
[mm] SIM translation stage pos	-226.272463	-226.2707769332891			
[mm] SIM translation stage offset	-7.32	-7.321676069640603			
[s] Observation start time (MET)	75530905.184000	75530509.03195401			
Observation start date	2000-05-24T04:47:21	2000-05-24T04:41:49			
[s] Observation end time (MET)	75538905.184000	75539039.082267			
Observation end date	2000-05-24T07:00:41	2000-05-24T07:03:59			
Read mode	TIMED	TIMED			

2.3 Aspect



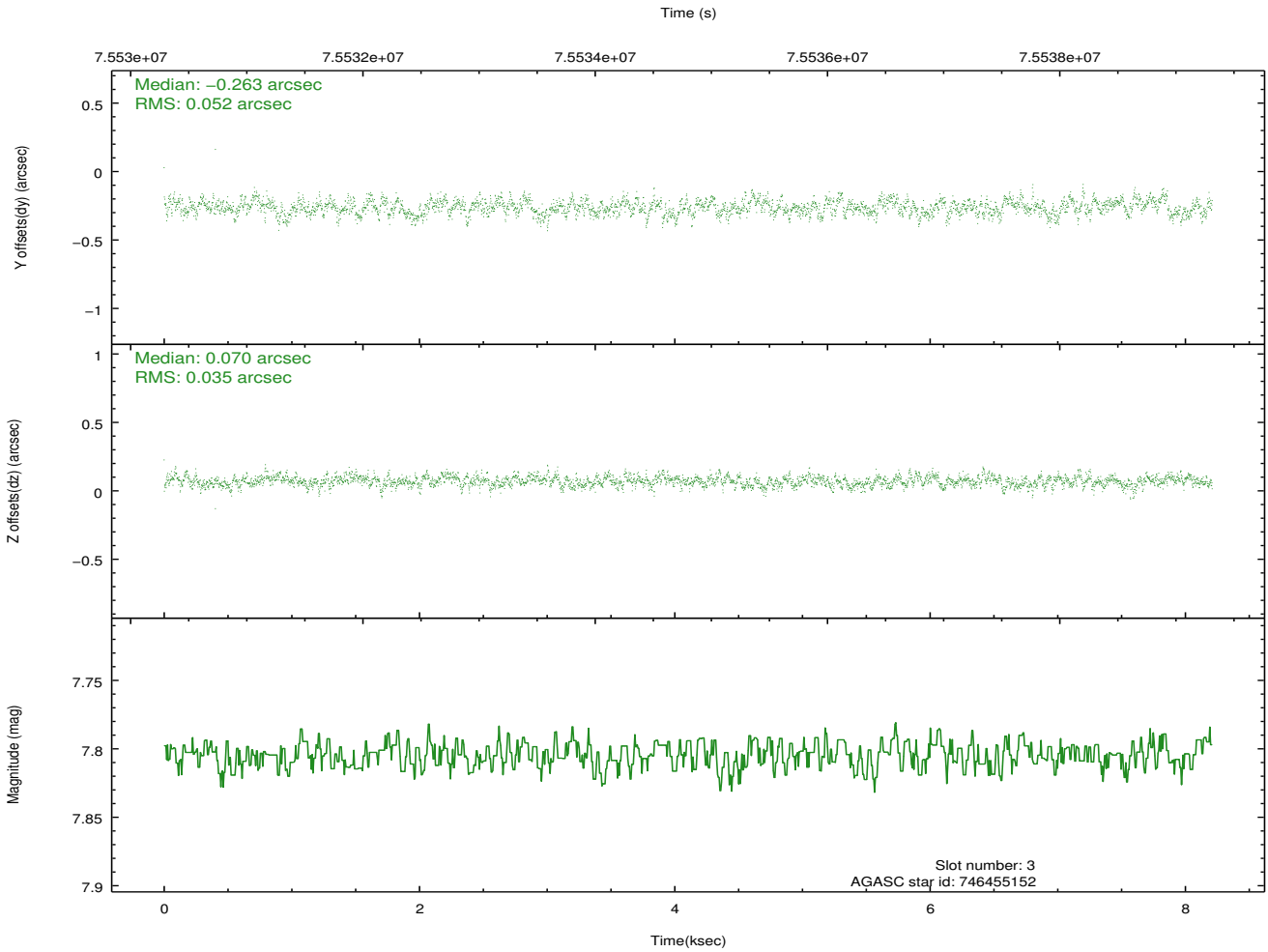
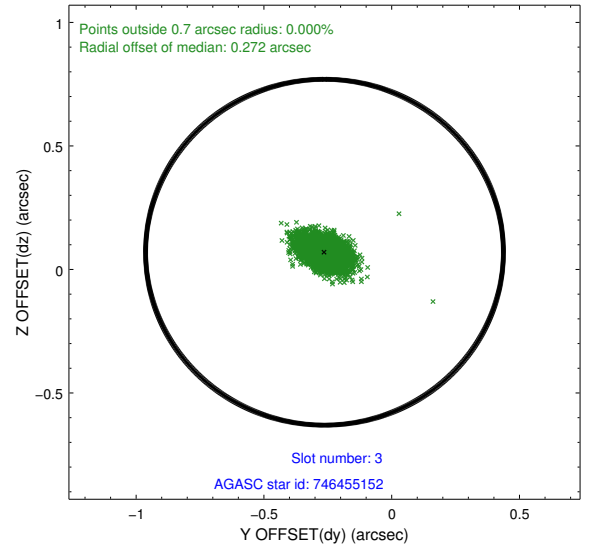
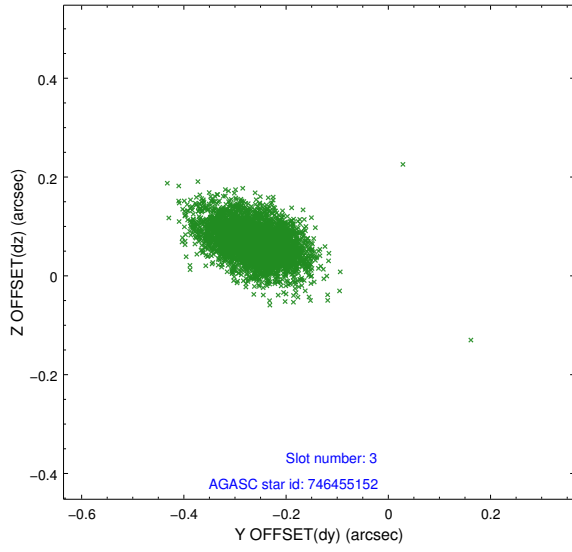


Slot Statistics

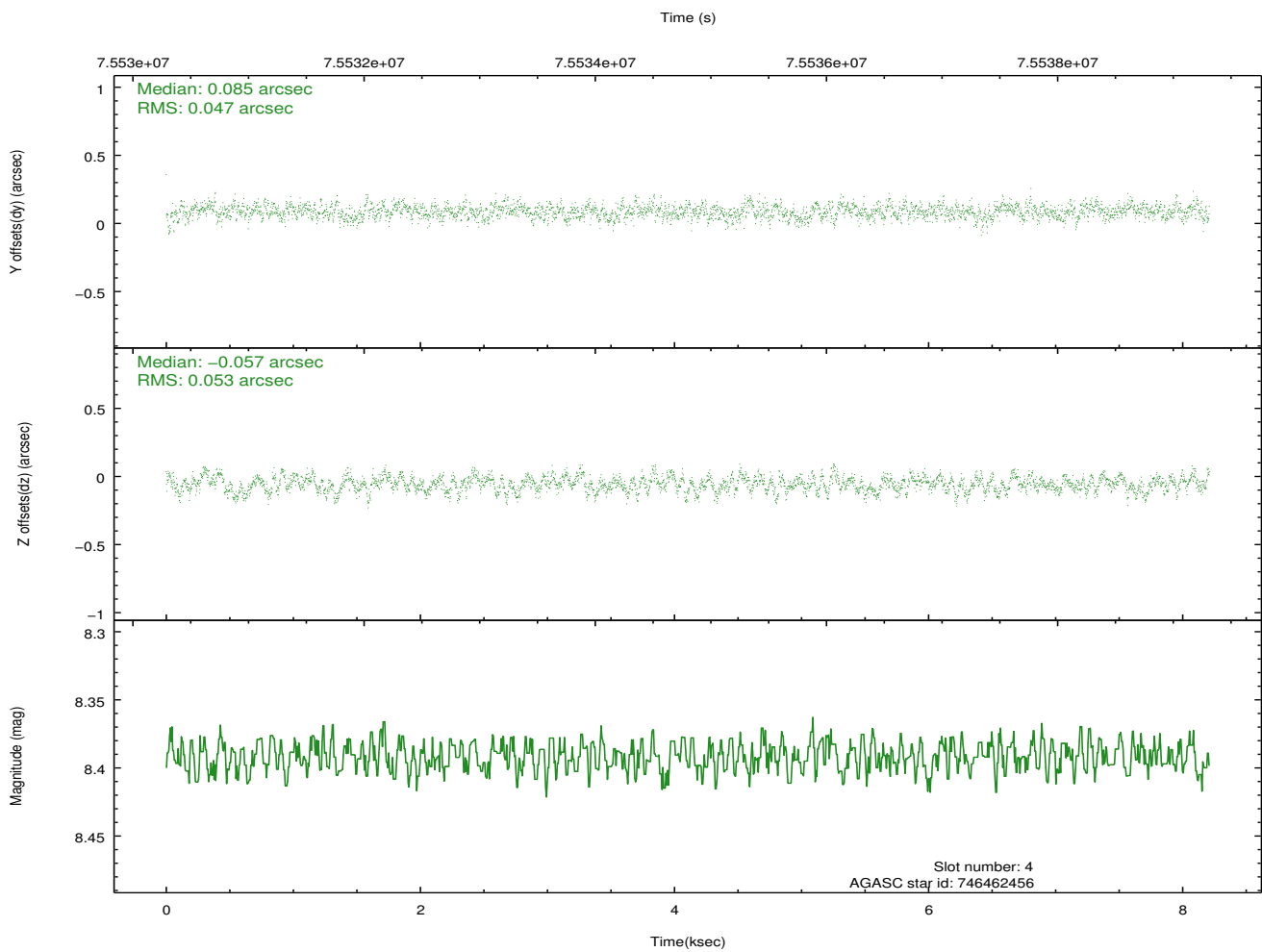
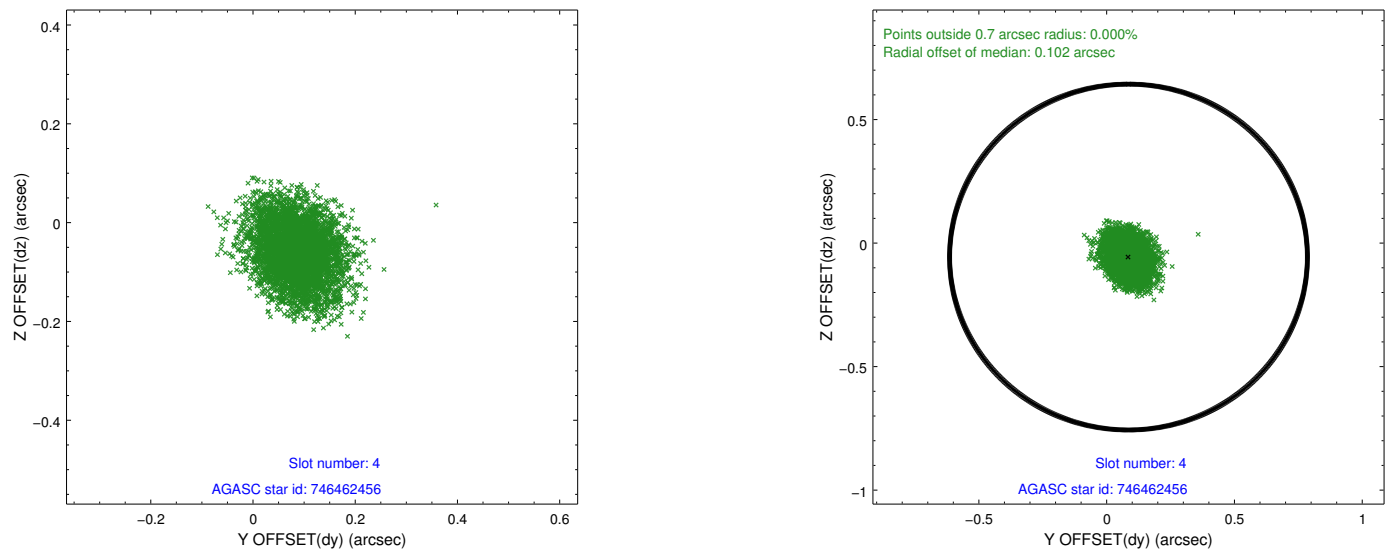
slot	status	id	mag	n_pts	med_dy	med_dz	dr1	dr2	ra	dec	mean_y	mean_z
0	FID	ACIS-I-2	7.17	2003	-0.031	-0.049	0.008	0.014	0.000000	0.000000	-754.98	-983.10
1	FID	ACIS-I-4	7.16	2002	-0.031	0.040	0.005	0.010	0.000000	0.000000	2158.71	922.74
2	FID	ACIS-I-5	7.23	2002	-0.038	0.078	0.008	0.014	0.000000	0.000000	-1807.58	920.41
3	GUIDE	746455152	7.80	4004	-0.263	0.070	0.065	0.112	278.447893	-9.976732	1749.59	-889.41
4	GUIDE	746462456	8.39	4005	0.085	-0.057	0.076	0.122	278.652171	-10.530173	-369.26	-862.36
5	GUIDE	746455112	8.94	4006	0.108	0.095	0.083	0.137	278.266531	-10.703234	-470.56	634.42
6	GUIDE	746460328	9.79	4005	-0.126	0.121	0.128	0.214	278.603974	-9.898096	1818.80	-1507.01
7	GUIDE	746995400	9.67	4004	0.198	-0.228	0.120	0.195	278.078957	-11.289885	-2212.91	1998.57

2.4 Star Slots

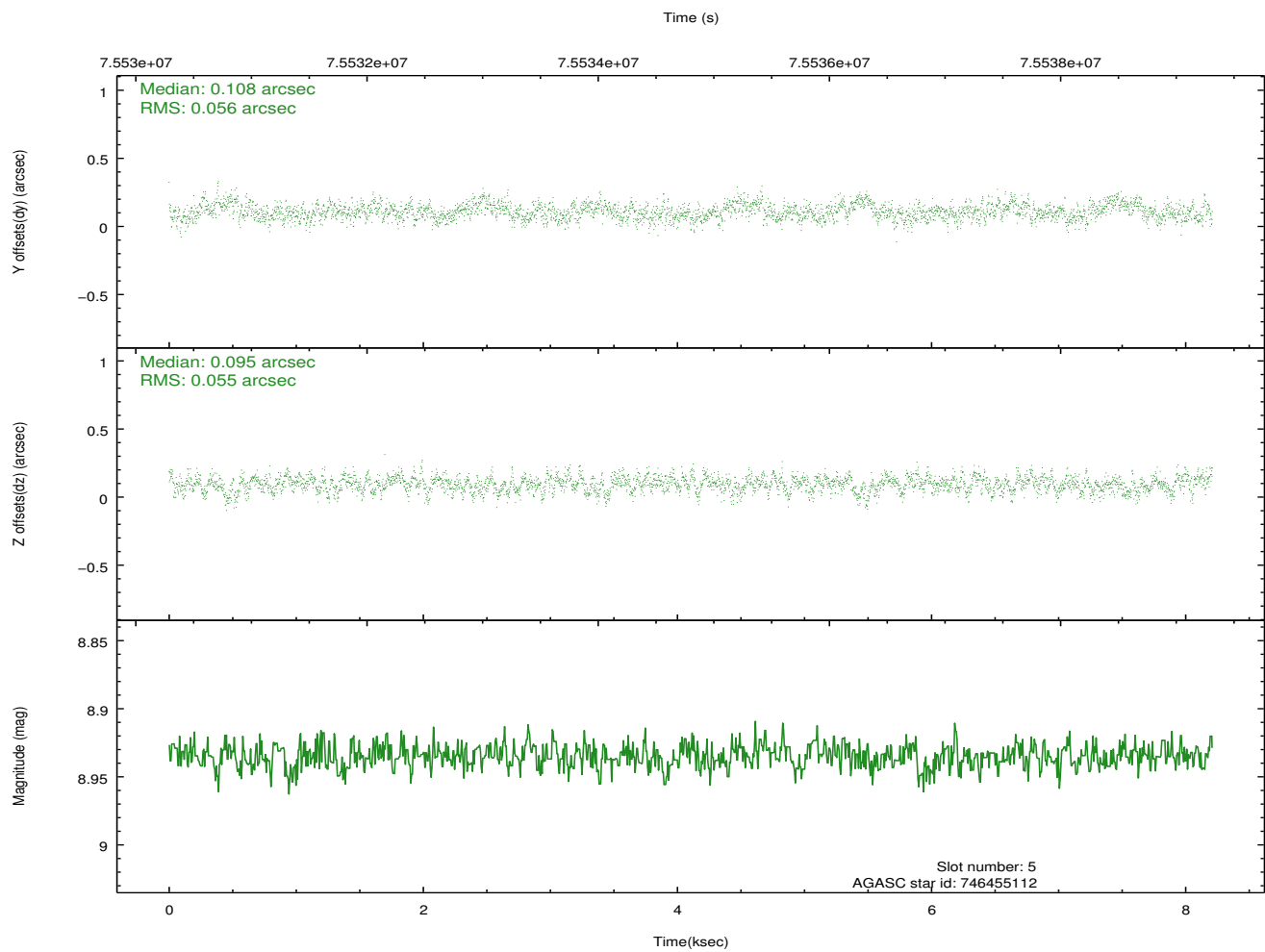
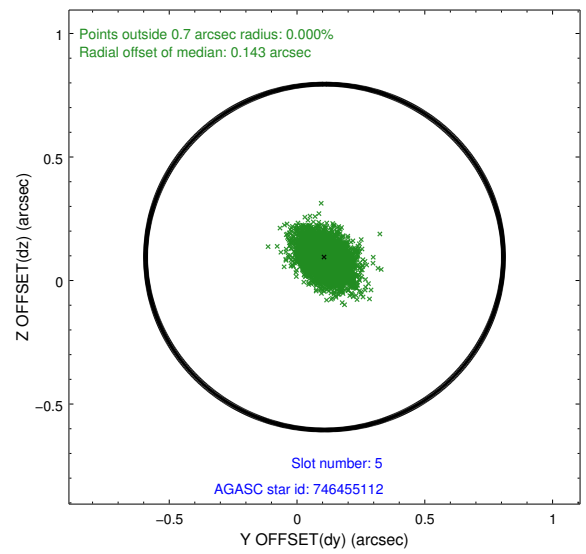
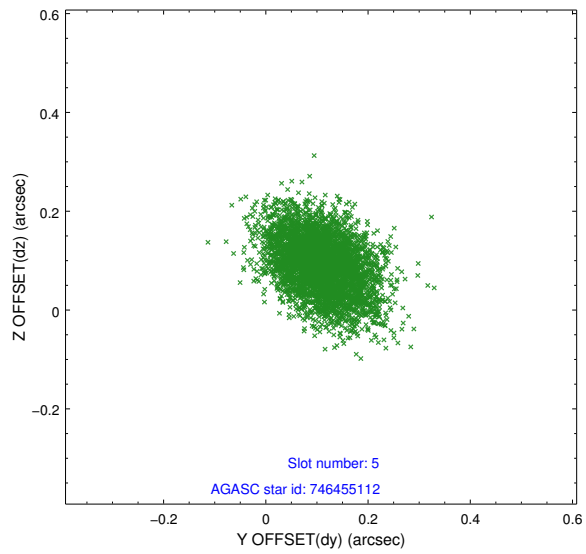
2.4.1 Slot 3



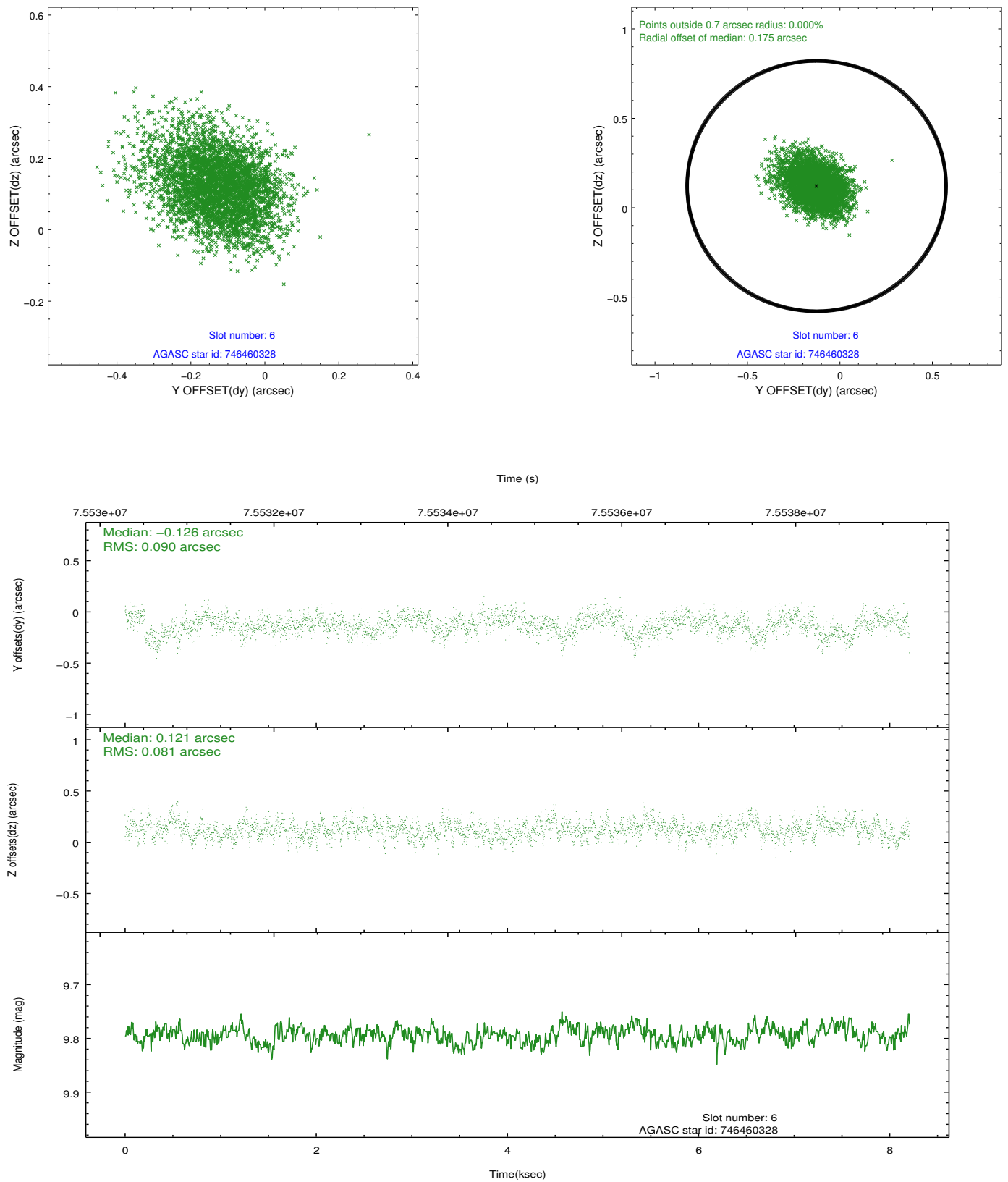
2.4.2 Slot 4



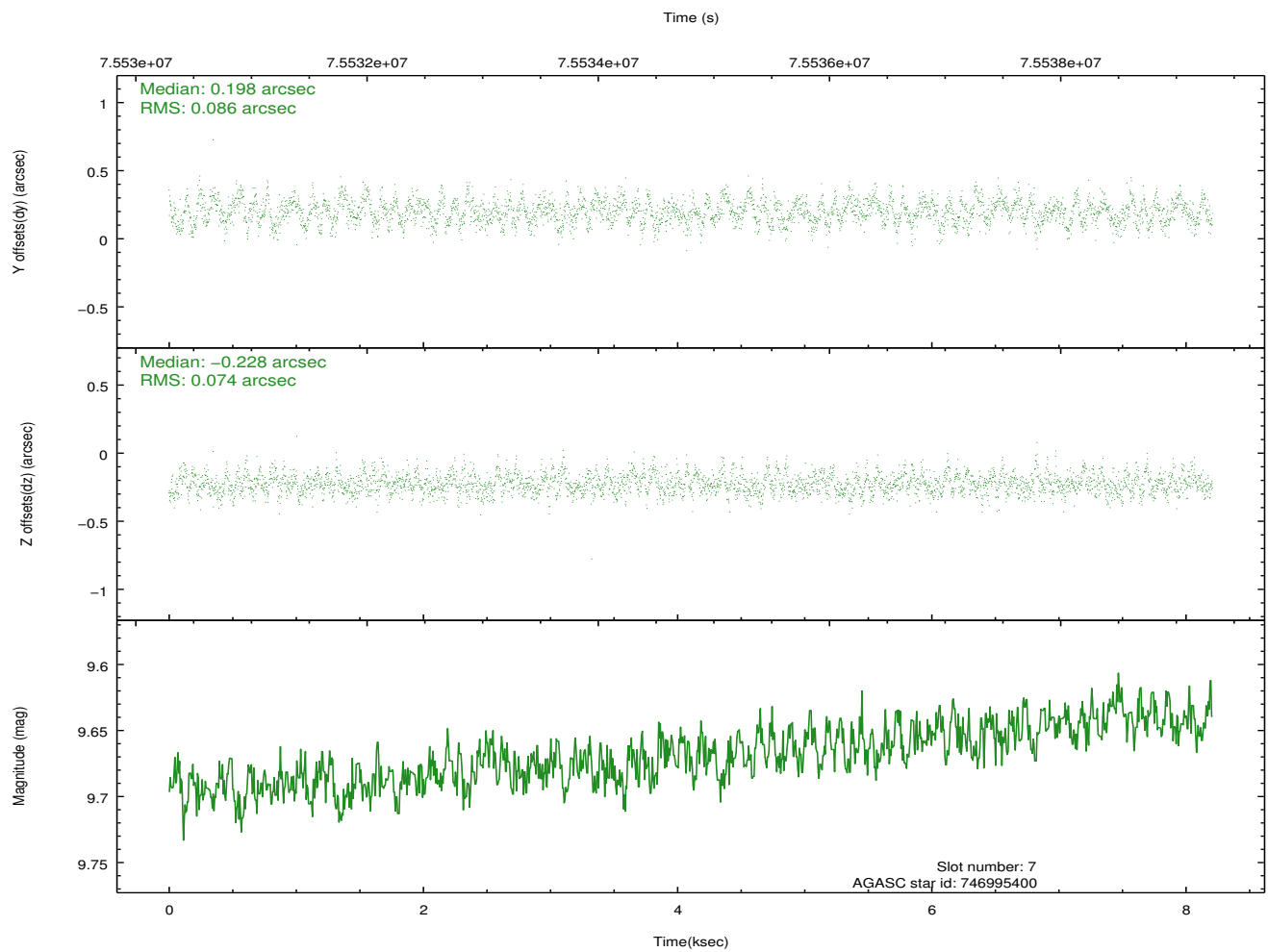
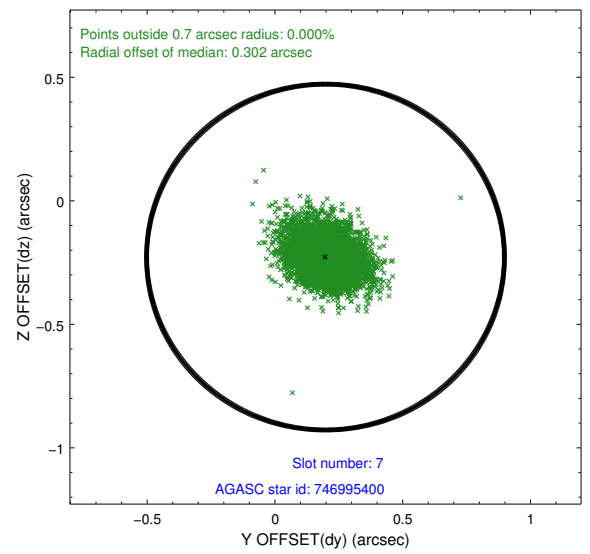
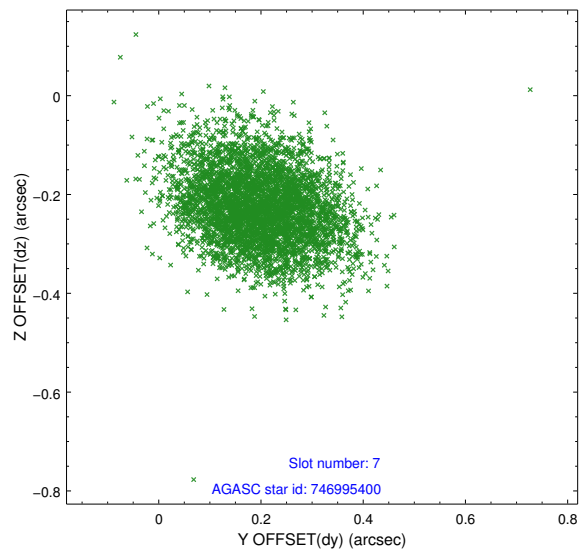
2.4.3 Slot 5



2.4.4 Slot 6

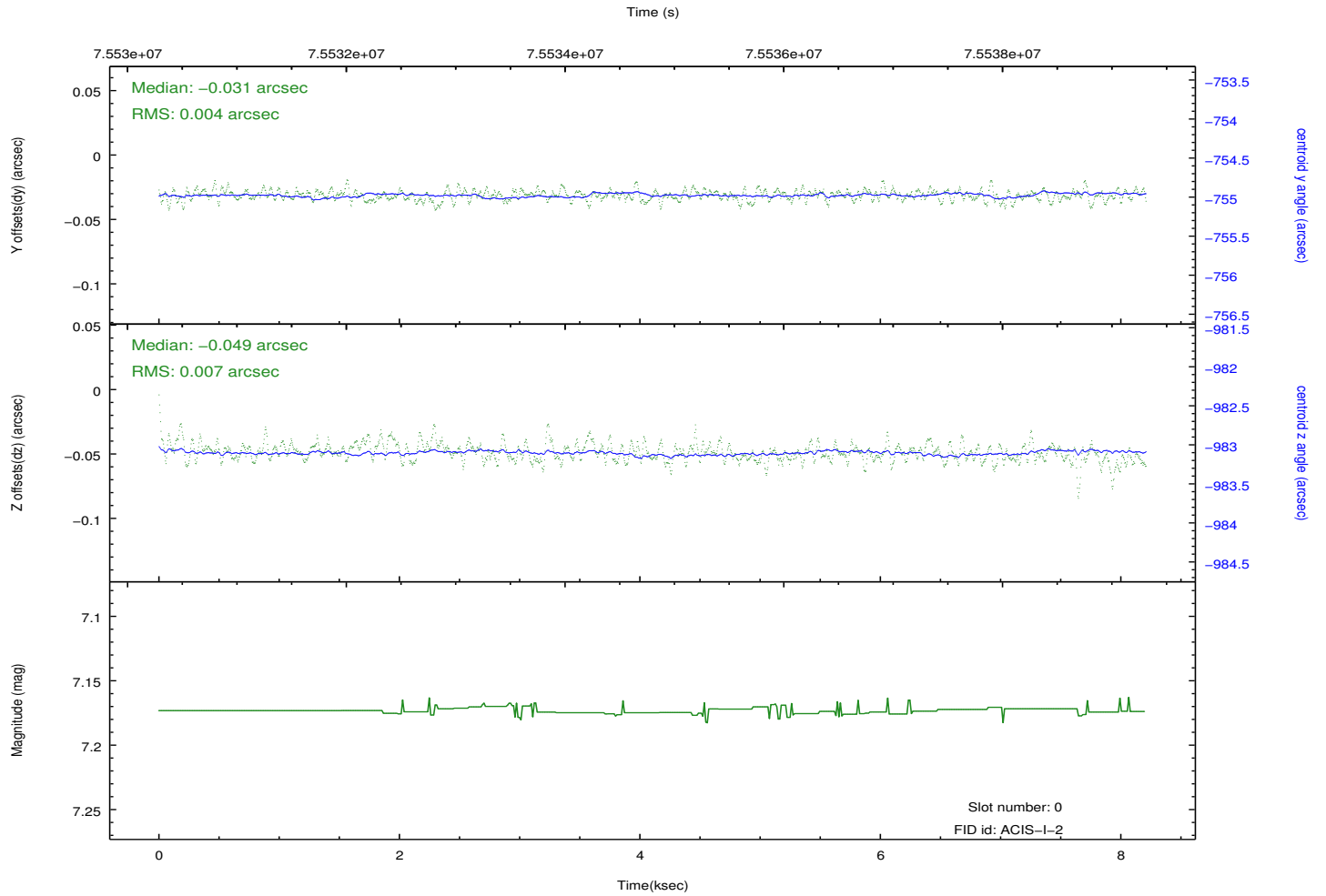
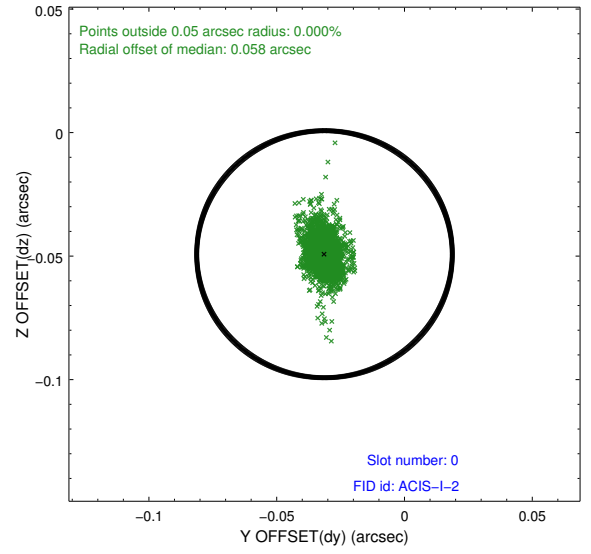
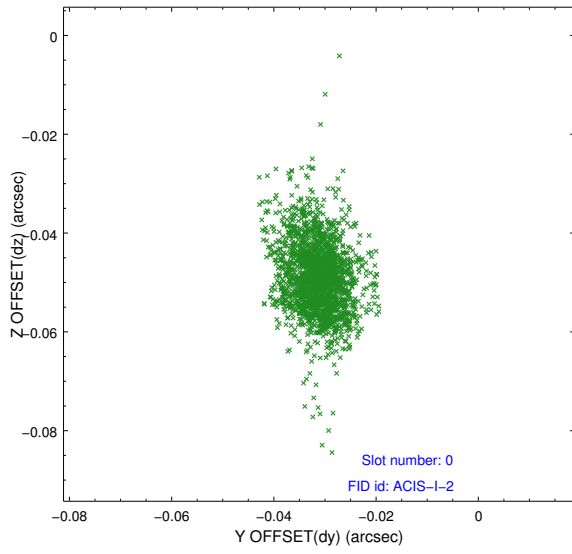


2.4.5 Slot 7

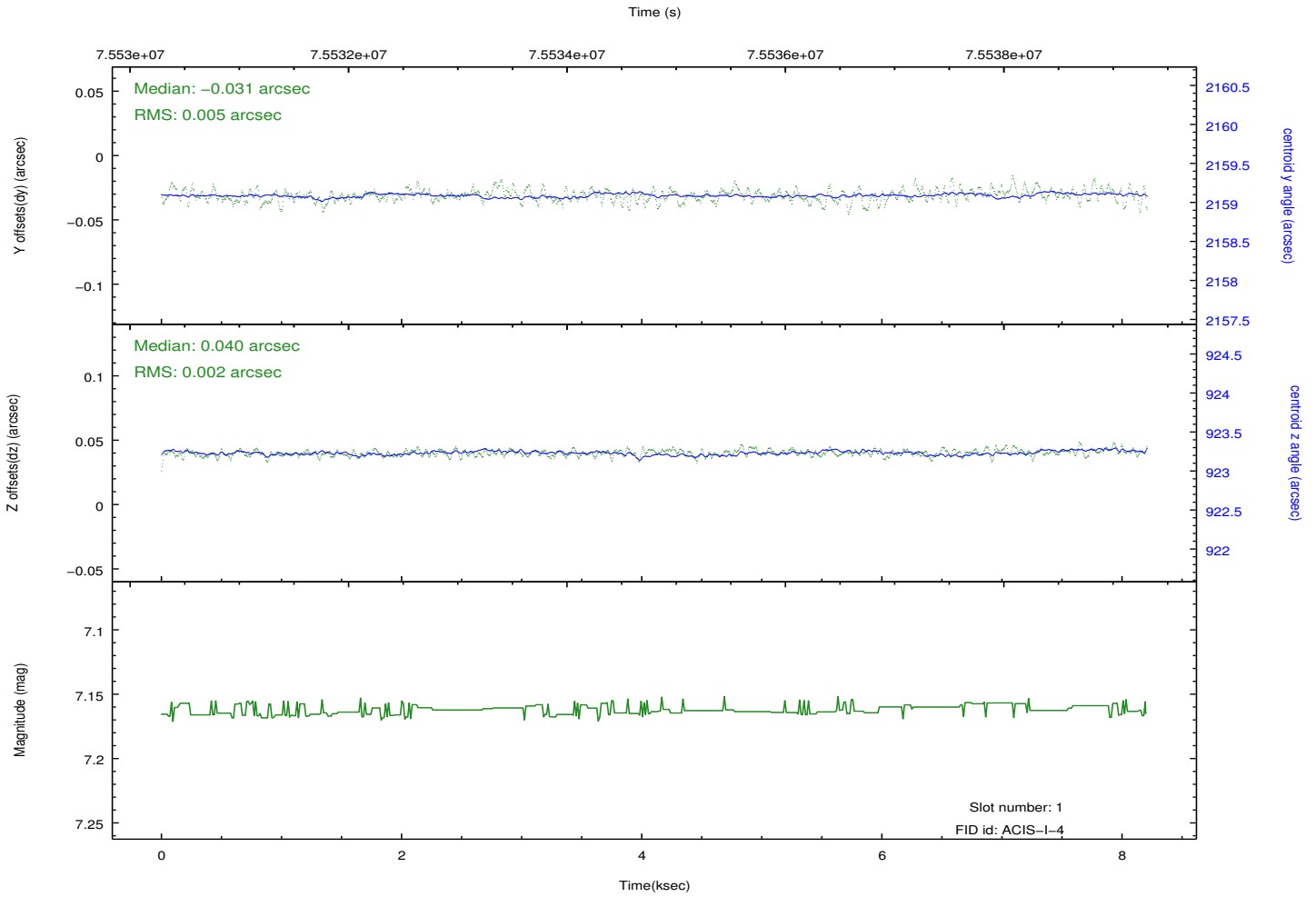
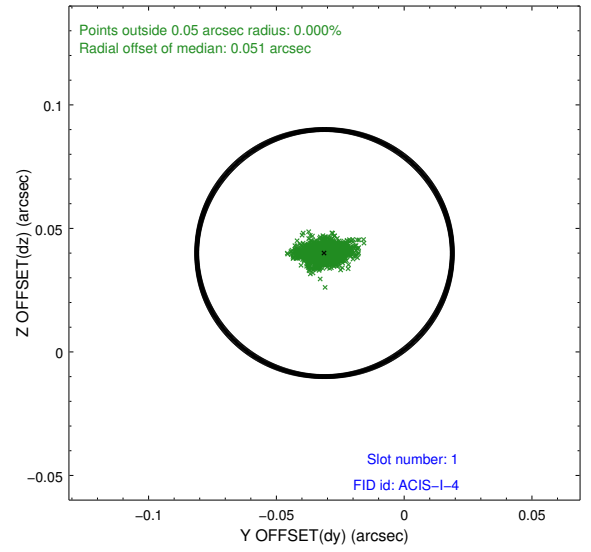
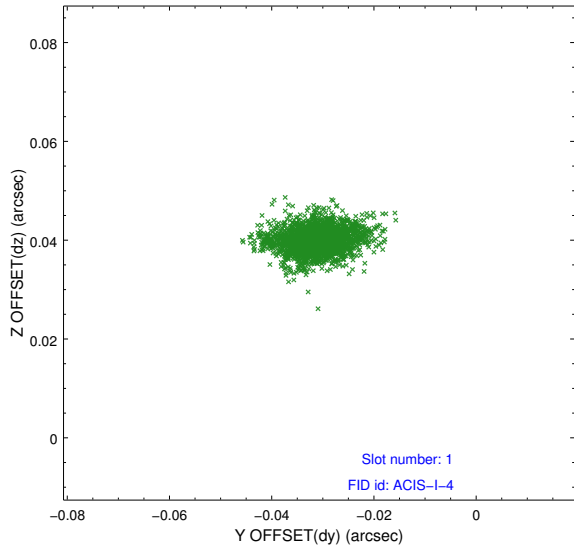


2.5 FID Slots

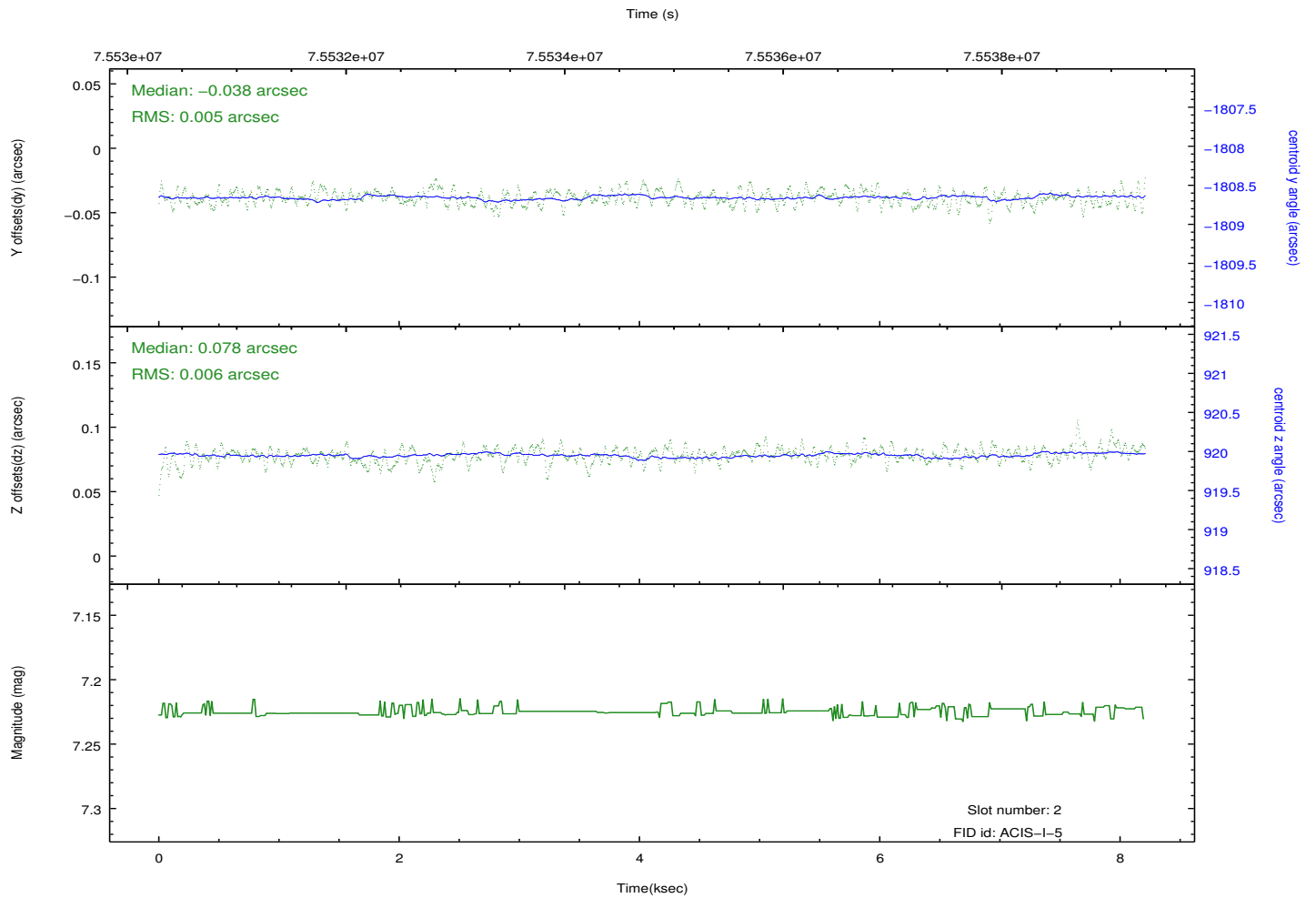
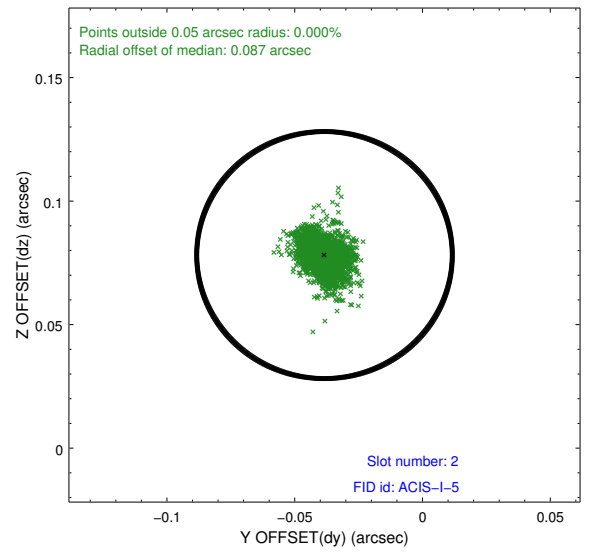
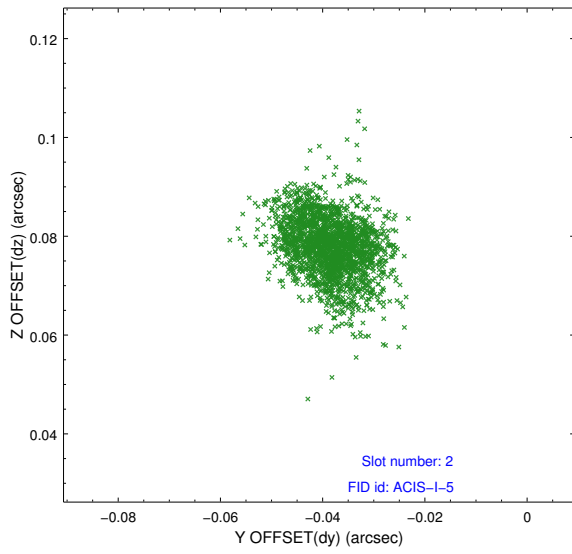
2.5.1 Slot 0



2.5.2 Slot 1



2.5.3 Slot 2



A Summary

A.1 Status

V&V Scientist	Jen Lauer
V&V Date (YYYY-MM-DD)	2012.08.30
V&V Edition	1
V&V Disposition and Status	OK
V&V Charge Time	7.667

A.2 Comments