

V&V Reference Report

L2 ASCDS Version : 10.2.4

Observation 17535 - L2 Version 1
Chandra X-Ray Center

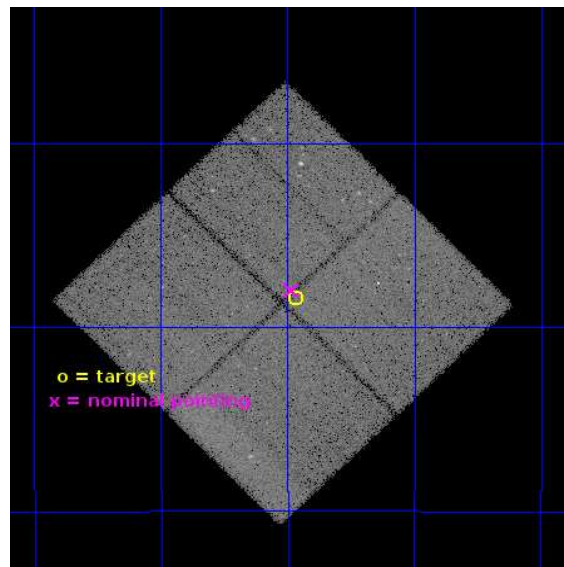
L2 Processing Date : Oct 19 2014

Contents

1	Front	2
2	OBI	3
2.1	OBI	3
2.1.1	Images	3
2.1.2	Bias	3
2.1.3	Parameters	4
2.1.4	Events	4
2.2	Compared Parameters	5
2.3	Aspect	6
2.4	Star Slots	9
2.4.1	Slot 3	9
2.4.2	Slot 4	10
2.4.3	Slot 5	11
2.4.4	Slot 6	12
2.4.5	Slot 7	13
2.5	FID Slots	14
2.5.1	Slot 0	14
2.5.2	Slot 1	15
2.5.3	Slot 2	16
A	Summary	17
A.1	Status	17
A.2	Comments	17

1 Front

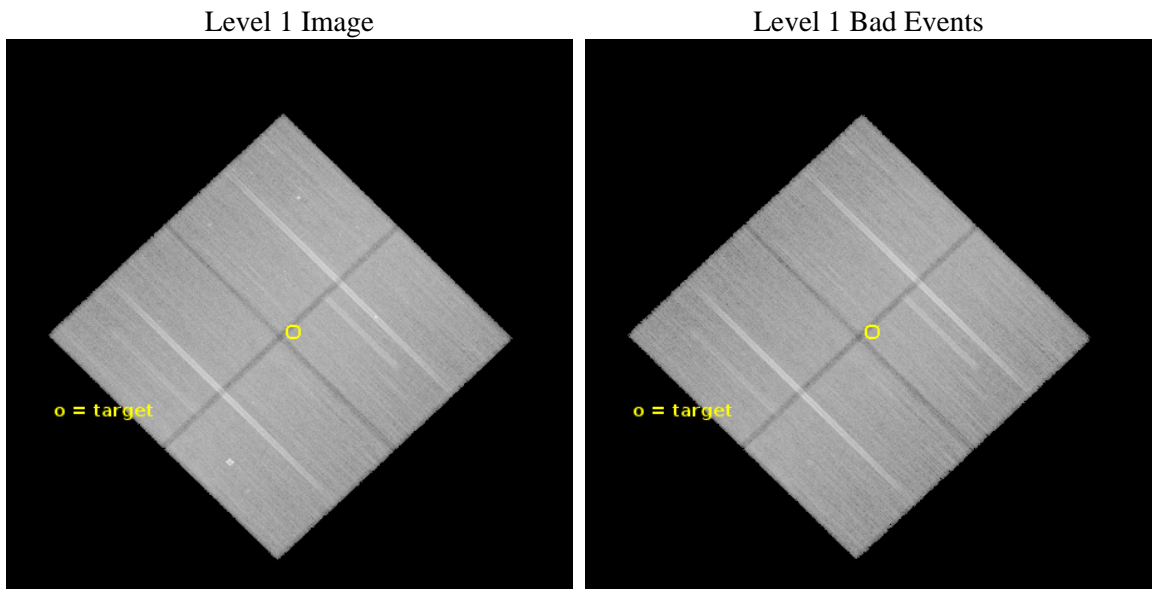
seq_num	901115	Sequence number
obs_id	17535	Observation id
title	The Chandra Deep Field-South: A Peerless Ultradeep Survey for Exploring the Distant X-ray Universe	Proposal title
observer	Prof. W.N. Brandt	Principal investigator
object	Chandra Deep Field-South	Source name
dtcycle	0	
cycle	P	events from which exps? Prim/Second/Both
ra_targ	53.117083	Observer's specified target RA [deg]
dec_targ	-27.807333	Observer's specified target Dec [deg]
ra_nom	53.12128554417	Nominal RA [deg]
dec_nom	-27.800039841363	Nominal Dec [deg]
roll_nom	45.610649345691	Nominal Roll [deg]
revision	1	Processing version of data
ontime	123533.50190151	Sum of GTIs [s]
livetime	121919.44575512	Livetime [s]
ontime0	123527.09678066	Sum of GTIs [s]
ontime1	123530.27878118	Sum of GTIs [s]
ontime2	123533.46086156	Sum of GTIs [s]
ontime3	123533.50190151	Sum of GTIs [s]
l2events	262316	Number of level 2 events



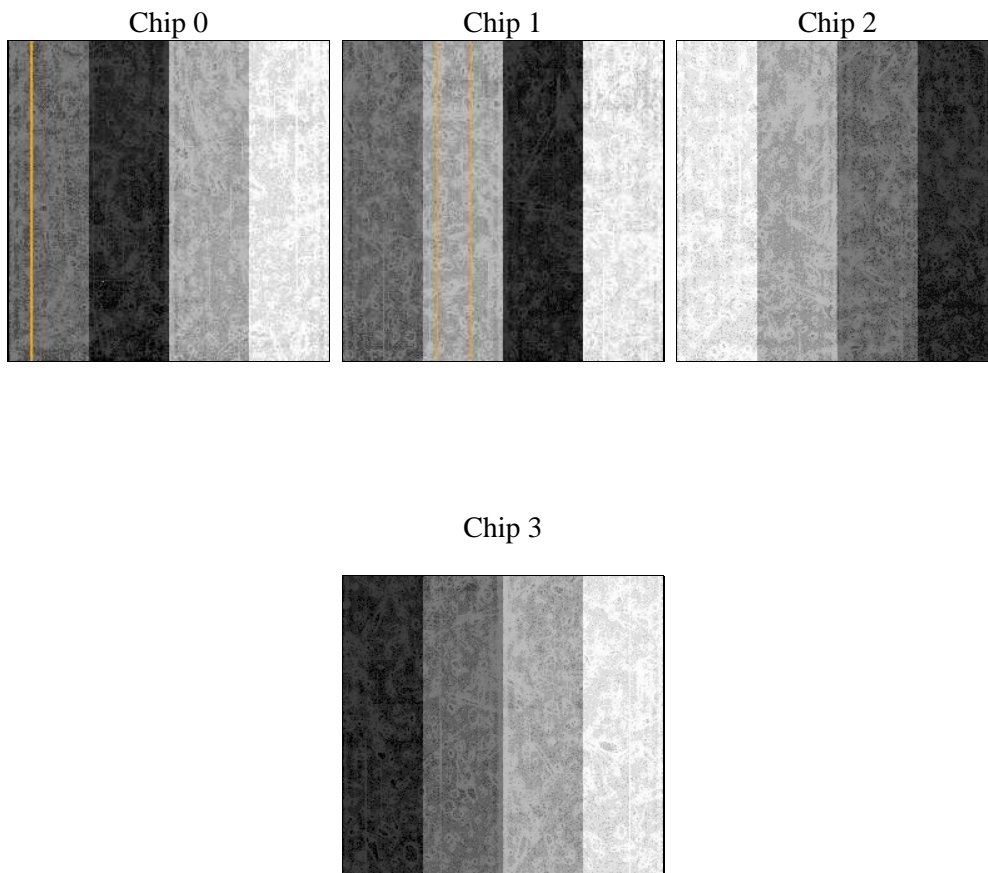
2 OBI

2.1 OBI

2.1.1 Images



2.1.2 Bias



2.1.3 Parameters

obi_num	0	Obi number	sched_exp_time	123452.000000	[s] Scheduled observation exposure time
ascdsver	10.2.4	Processing system revision	ontime	123533.50190151	Sum of GTIs [s]
caldsver	4.6.3	 	ontime0	123527.09678066	Sum of GTIs [s]
date	2014-10-19T04:22:16	Date and time of file creation	ontime1	123530.27878118	Sum of GTIs [s]
revision	1	Processing version of data	ontime2	123533.46086156	Sum of GTIs [s]
			ontime3	123533.50190151	Sum of GTIs [s]
			l1events	2585782	Number of level 1 events

2.1.4 Events

	ccd 0	ccd 1	ccd 2	ccd 3
level 1 events	610510	640957	666034	668281
rejected events	533069	552608	588953	594423
rejected %	87%	86%	88%	88%

	ccd 0	ccd 1	ccd 2	ccd 3
grade 0 events	26075	31475	27608	25163
	4%	4%	4%	3%
grade 1 events	348	410	365	415
	0%	0%	0%	0%
grade 2 events	19438	20735	18744	16691
	3%	3%	2%	2%
grade 3 events	8211	8369	7800	8037
	1%	1%	1%	1%
grade 4 events	7497	8337	7984	8026
	1%	1%	1%	1%
grade 5 events	31483	33209	29471	35149
	5%	5%	4%	5%
grade 6 events	16221	19439	14947	15943
	2%	3%	2%	2%
grade 7 events	501237	518983	559115	558857
	82%	80%	83%	83%

2.2 Compared Parameters

Parameter	Planned	Actual	Parameter	Planned	Actual
Instrument	ACIS	ACIS	Obspar format version number	7	7
Detector	ACIS-0123	ACIS-0123	Obspar file type	PREDICTED	ACTUAL
Grating	NONE	NONE	Obspar update status	NONE	UPDATED
Data mode	VFAINT	VFAINT	Number of optional ACIS chips dropped	0	0
Observation mode	POINTING	POINTING	On-chip summing requested	N	N
[deg] Pointing RA	53.113638	53.12128554417035	Subarray requested	NONE	NONE
[deg] Pointing Dec	-27.826800	-27.80003984136302	Alternating exposures requested	N	N
[deg] Pointing Roll	45.398388	45.61064934569144	[s] Primary exposure time	0.000000	3.1
[mm] SIM focus pos	-0.782348	-0.7809083437167272			
[mm] SIM defocus	0	0.001439871863259334			
[mm] SIM translation stage pos	-233.592463	-233.5874344608287			
[mm] SIM translation stage offset	0	-0.005018542100998502			
[s] Observation start time (MET)	529919637.184000	529918491.51288			
Observation start date	2014-10-17T07:52:50	2014-10-17T07:34:51			
[s] Observation end time (MET)	530043089.184000	530044091.94486			
Observation end date	2014-10-18T18:10:22	2014-10-18T18:28:11			
Read mode	TIMED	TIMED			

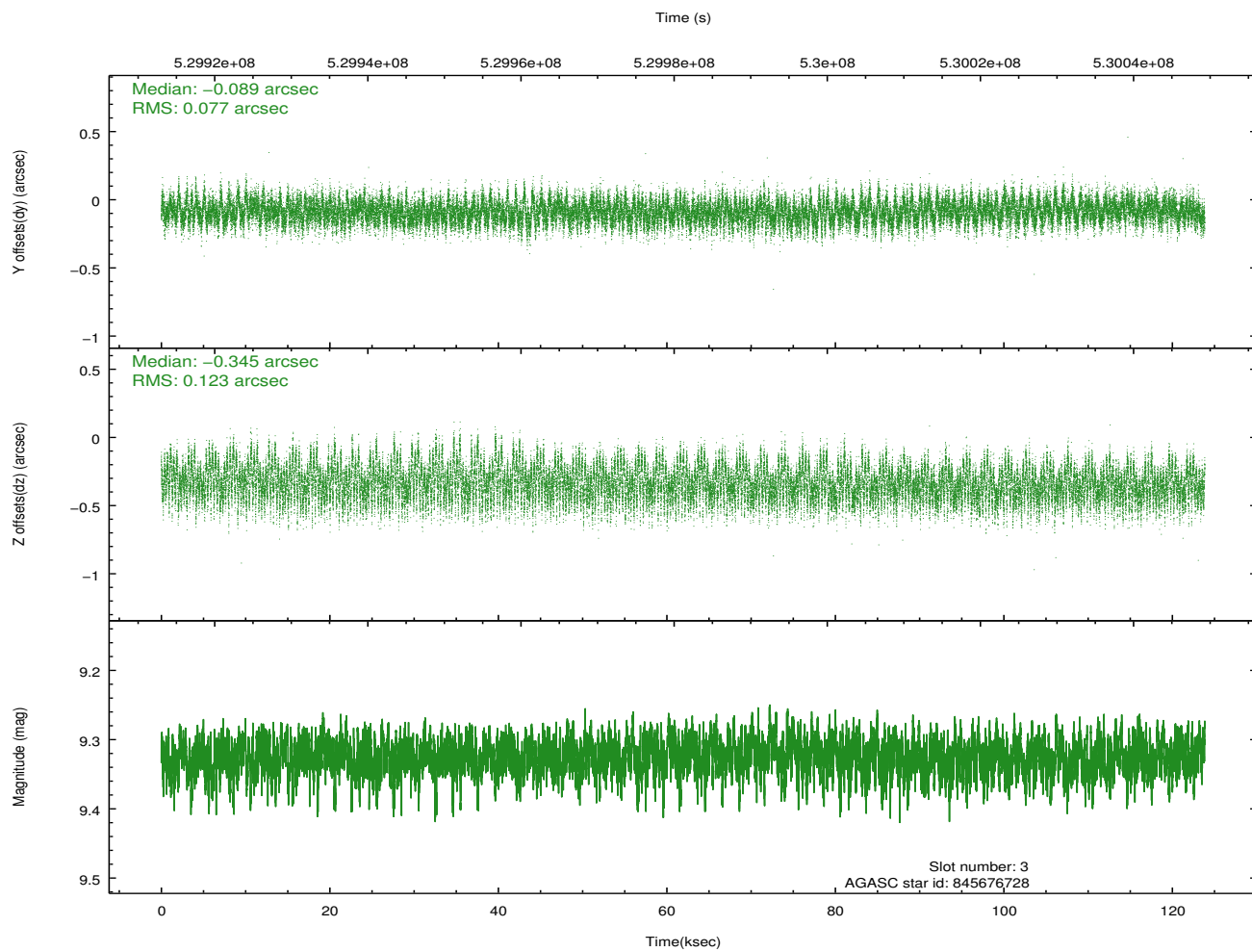
2.3 Aspect

Slot Statistics

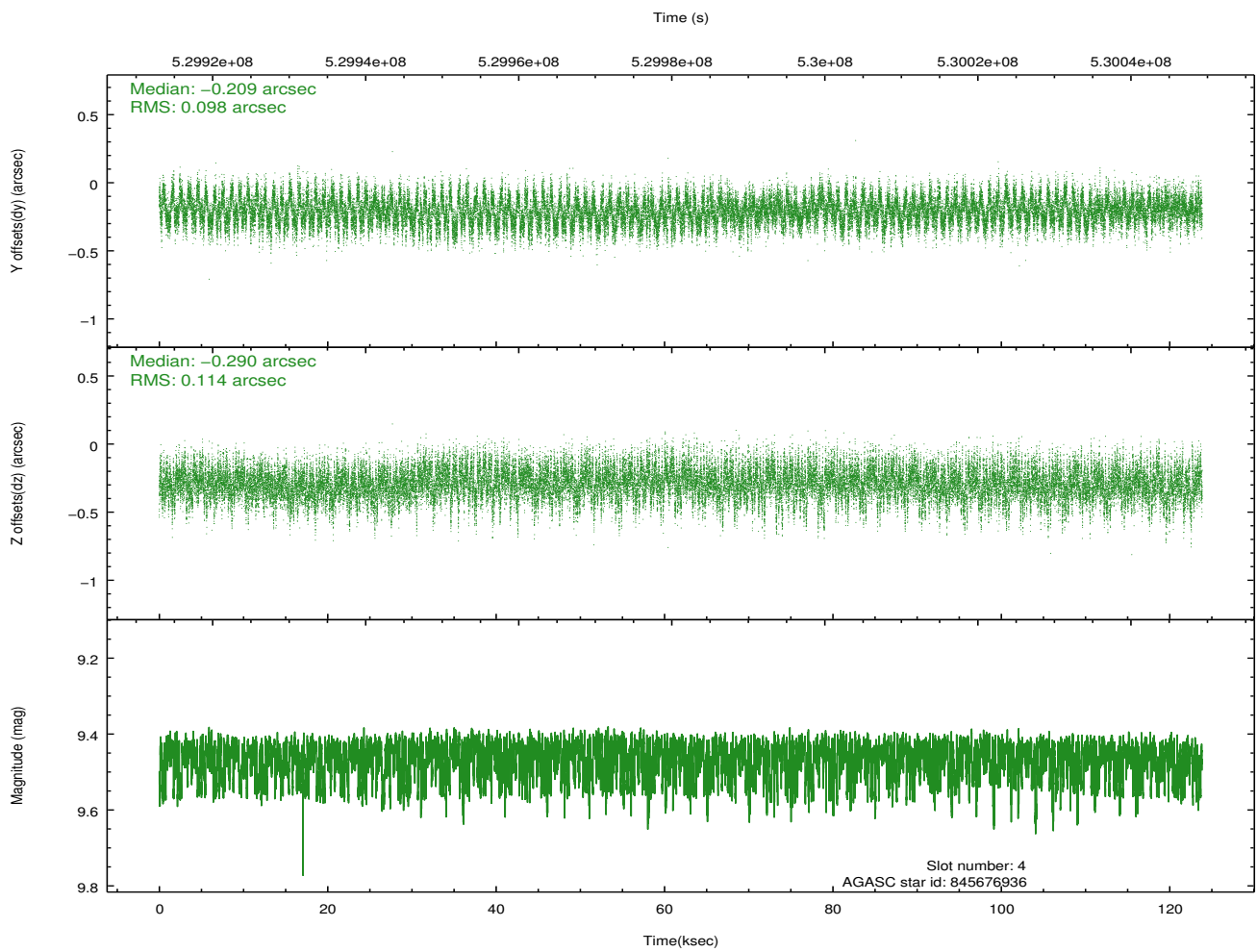
slot	status	id	mag	n_pts	med_dy	med_dz	dr1	dr2	ra	dec	mean_y	mean_z
0	FID	ACIS-I-1	7.17	30212	-0.053	-0.058	0.009	0.024	0.000000	0.000000	911.91	-845.37
1	FID	ACIS-I-4	7.14	30210	0.379	0.089	0.011	0.049	0.000000	0.000000	2132.27	1054.66
2	FID	ACIS-I-5	7.15	30212	-0.423	0.039	0.009	0.033	0.000000	0.000000	-1836.64	1052.24
3	GUIDE	845676728	9.33	60368	-0.089	-0.345	0.155	0.252	52.877179	-27.664318	-113.13	946.97
4	GUIDE	845676936	9.46	60337	-0.209	-0.290	0.161	0.257	52.843773	-27.880153	-739.64	475.56
5	GUIDE	845807880	8.79	60328	-0.217	-0.051	0.109	0.173	53.382027	-27.886093	447.42	-758.28
6	GUIDE	845816344	9.21	60376	0.492	0.666	0.139	0.223	53.137522	-28.675689	-2121.65	-2199.00
7	GUIDE	845807840	9.46	59723	0.018	0.013	0.188	0.320	54.104867	-27.888625	2048.22	-2411.70

2.4 Star Slots

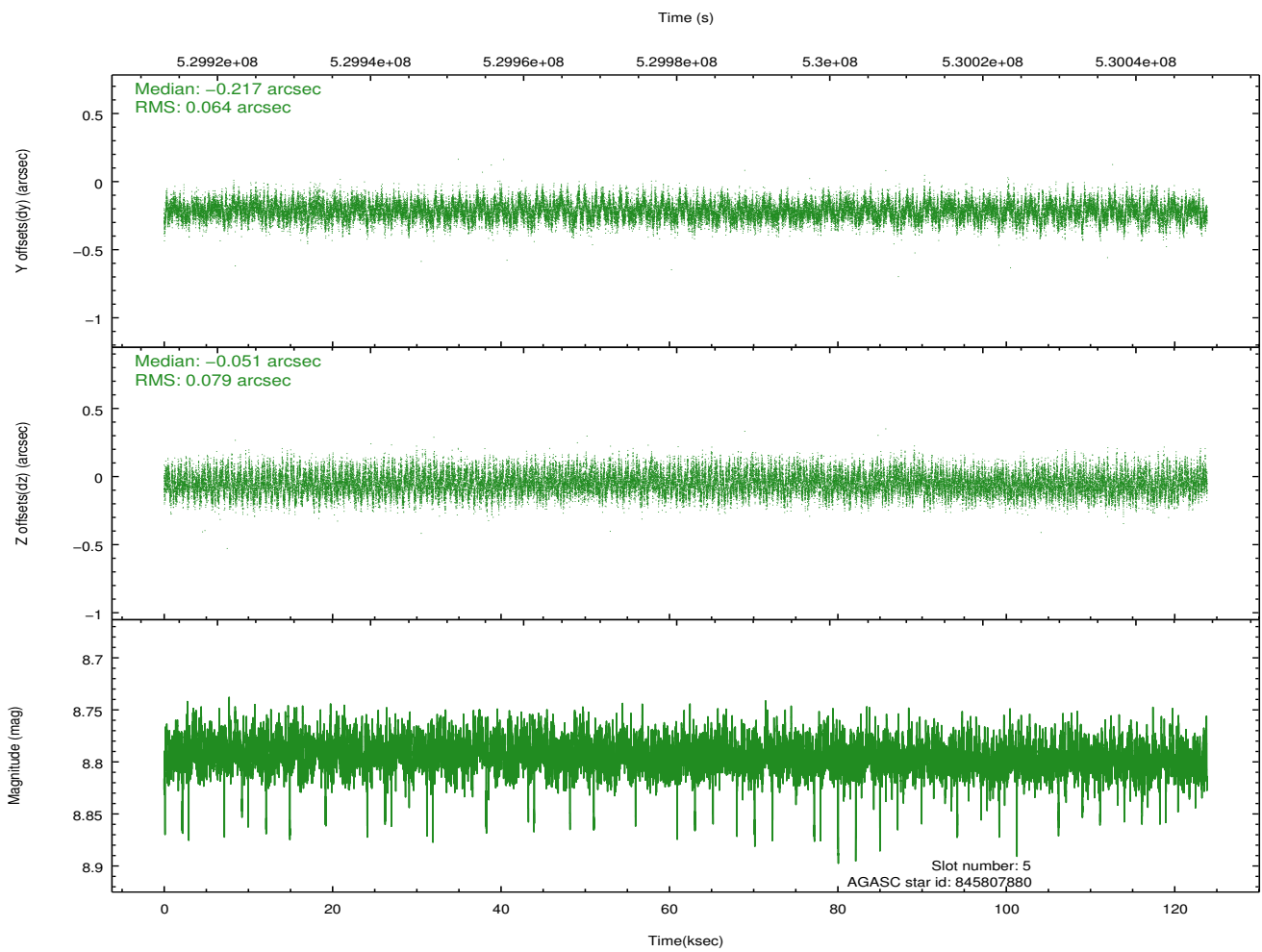
2.4.1 Slot 3



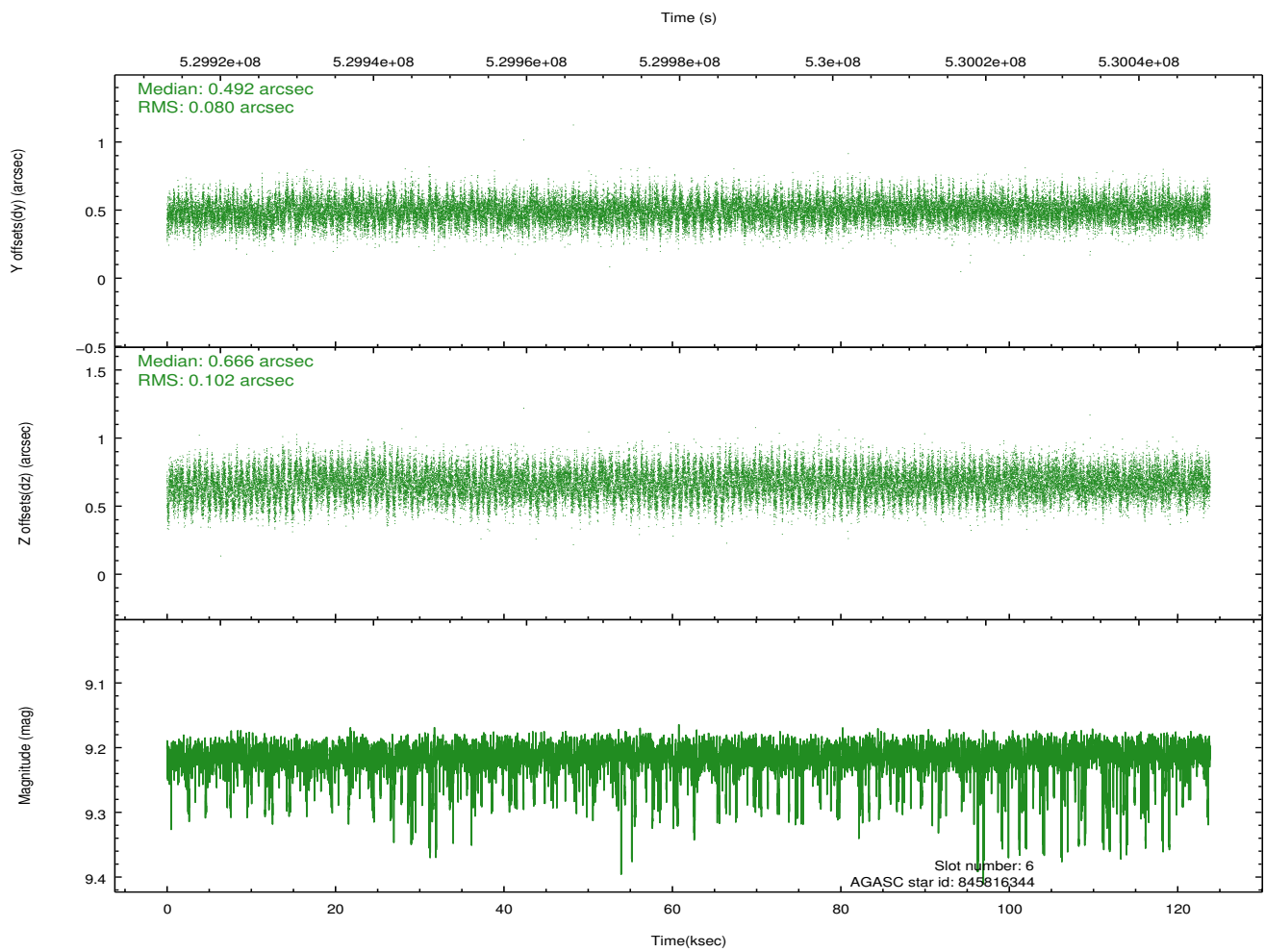
2.4.2 Slot 4



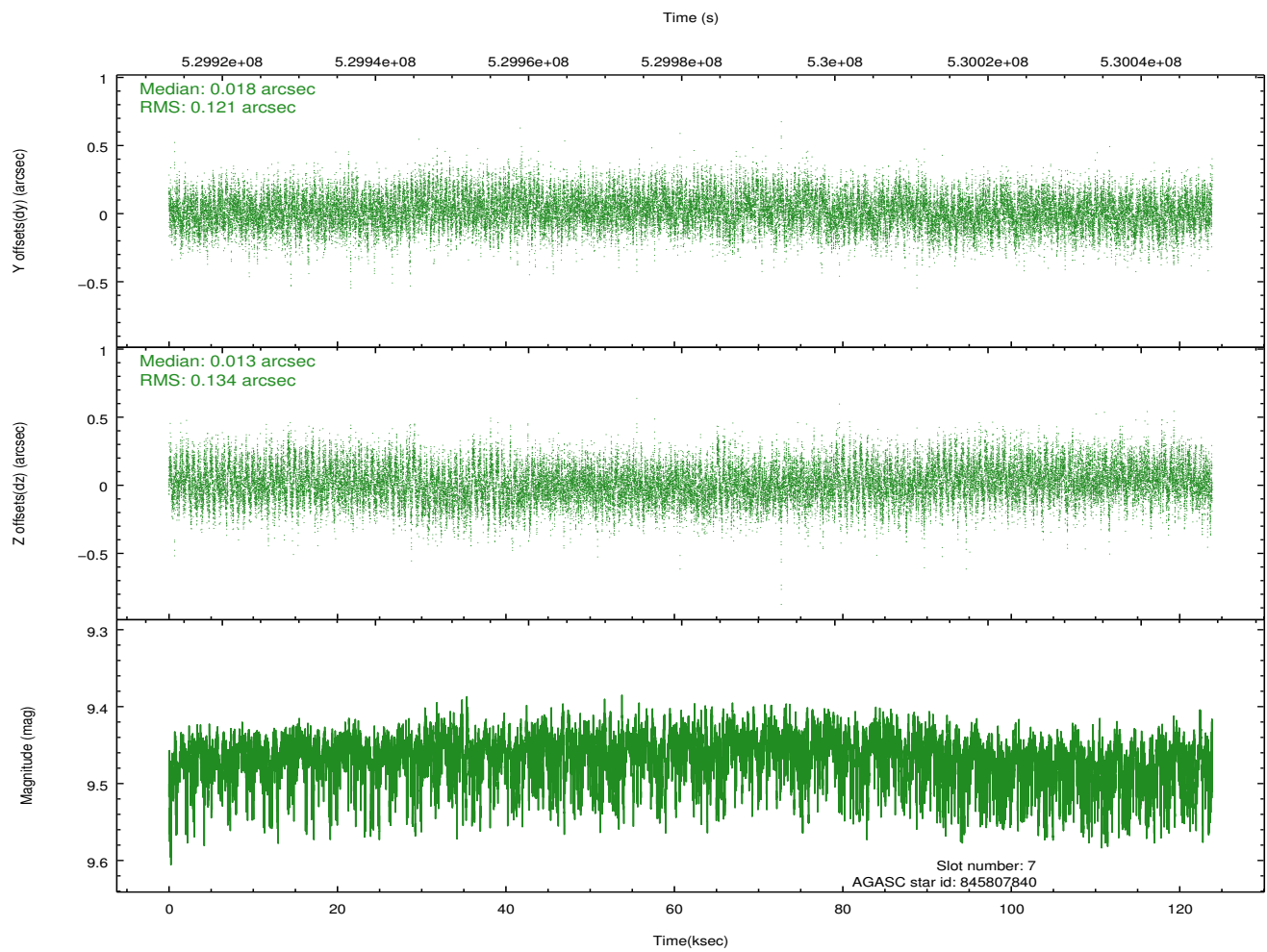
2.4.3 Slot 5



2.4.4 Slot 6

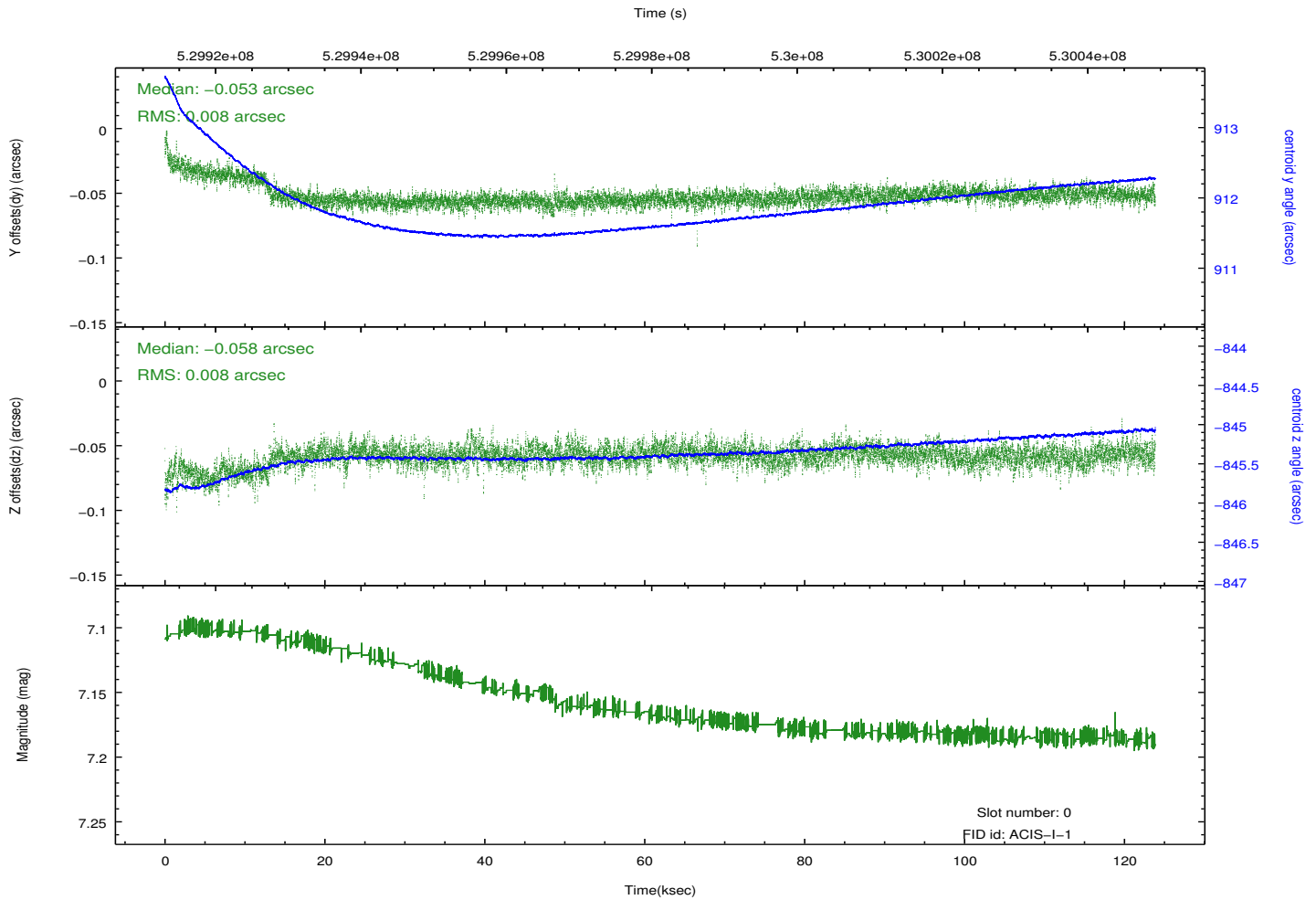
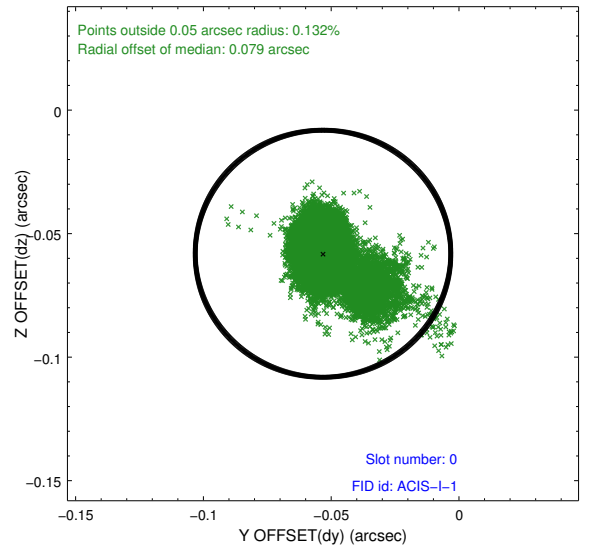
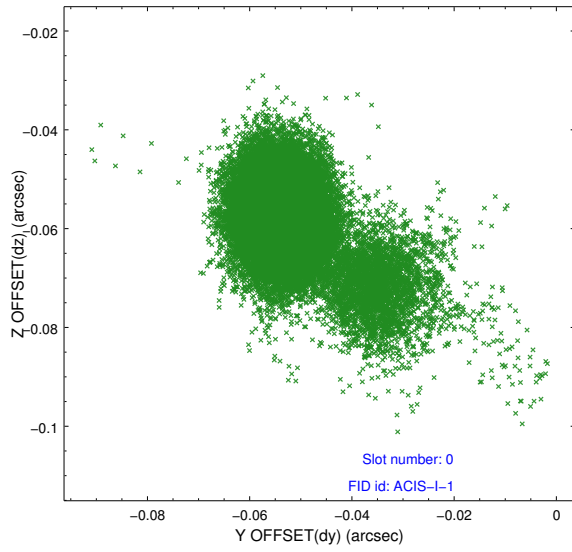


2.4.5 Slot 7

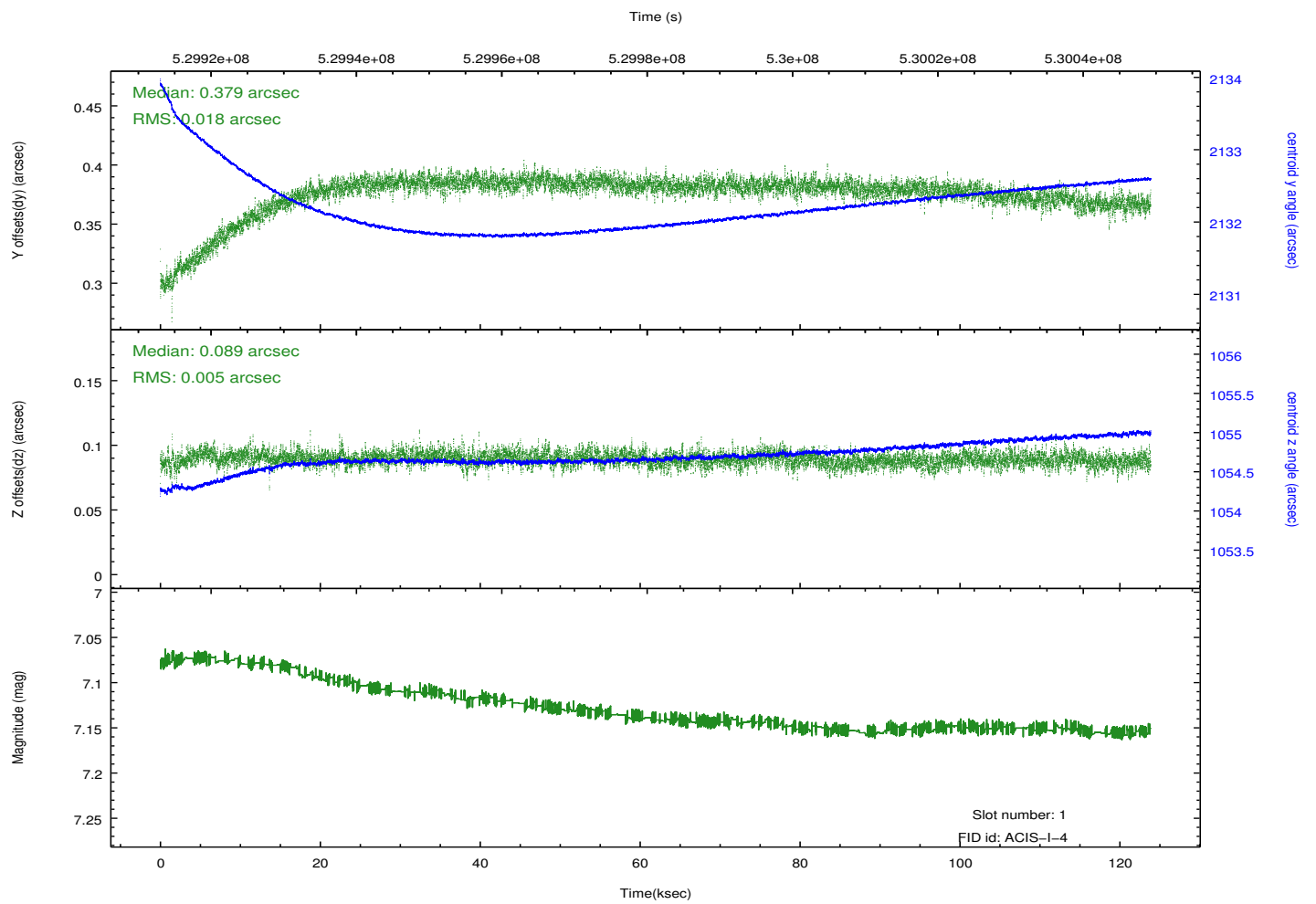
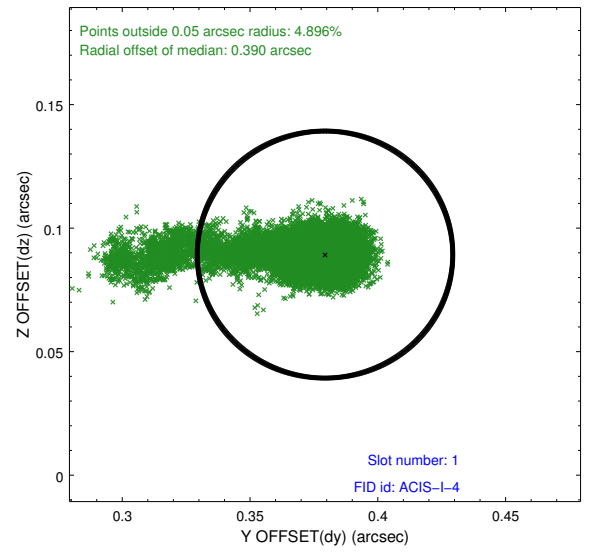
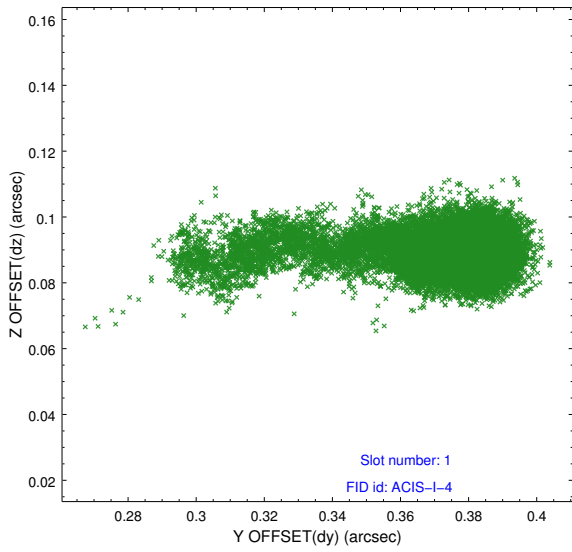


2.5 FID Slots

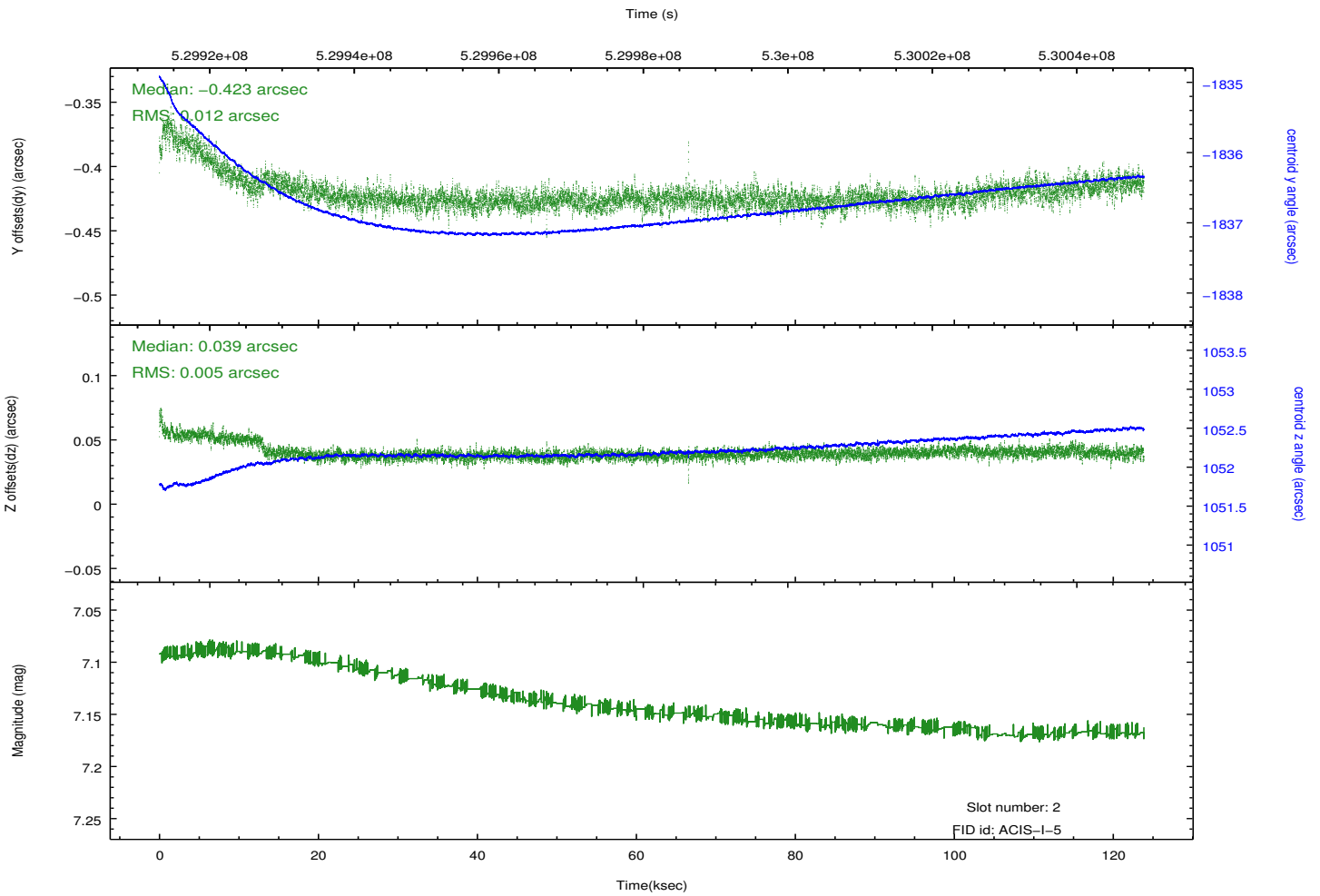
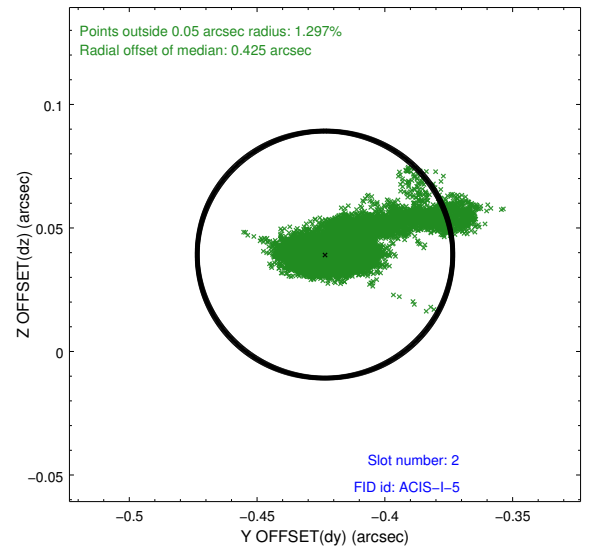
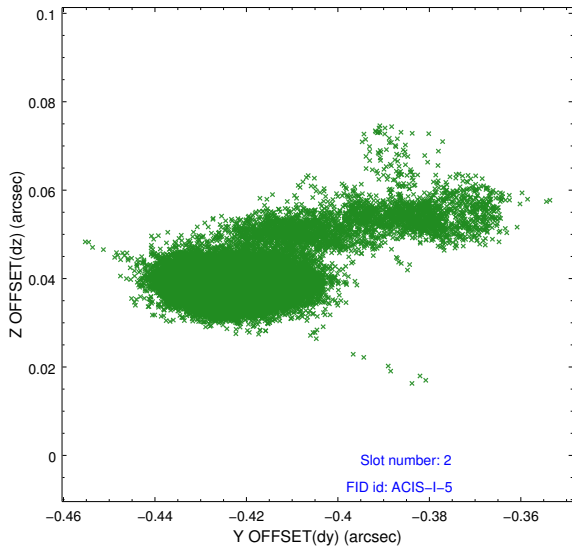
2.5.1 Slot 0



2.5.2 Slot 1



2.5.3 Slot 2



A Summary

A.1 Status

V&V Scientist	Beth Sundheim
V&V Date (YYYY-MM-DD)	2014.10.20
V&V Edition	1
V&V Disposition and Status	OK
V&V Charge Time	123.53350190151

A.2 Comments