

V&V Reference Report

L2 ASCDS Version : 8.4.5

Observation 2205 - L2 Version 4
Chandra X-Ray Center

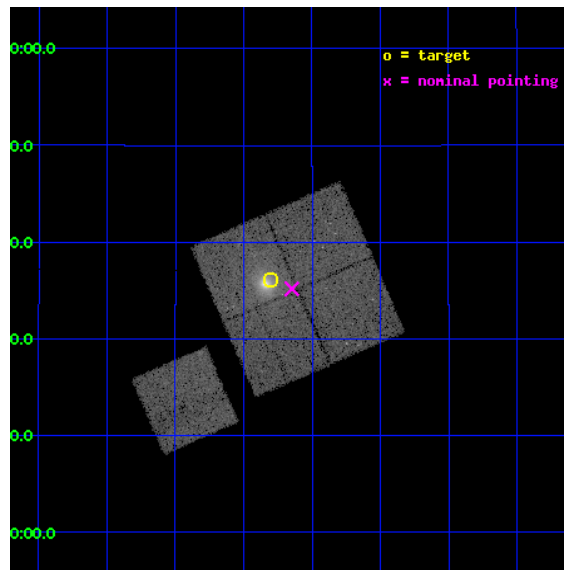
L2 Processing Date : Sep 17 2012

Contents

1	Front	2
2	OBI	3
2.1	OBI	3
2.1.1	Images	3
2.1.2	Bias	3
2.1.3	Parameters	4
2.1.4	Events	4
2.2	Compared Parameters	5
2.3	Aspect	6
2.4	Star Slots	9
2.4.1	Slot 3	9
2.4.2	Slot 4	10
2.4.3	Slot 5	11
2.4.4	Slot 6	12
2.4.5	Slot 7	13
2.5	FID Slots	14
2.5.1	Slot 0	14
2.5.2	Slot 1	15
2.5.3	Slot 2	16
A	Summary	17
A.1	Status	17
A.2	Comments	17

1 Front

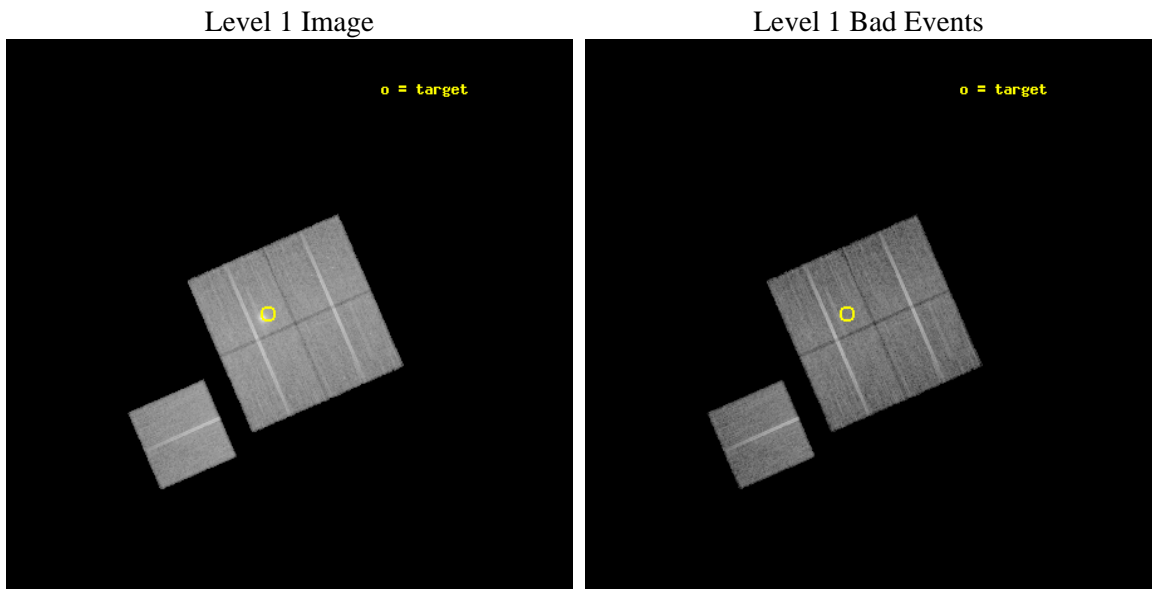
seq_num	800144	Sequence number
obs_id	2205	Observation id
title	THE VARIATION OF BARYON FRACTIONS AMONGST GALAXY CLUSTERS: THE CASE OF ABELL 1204	Proposal title
observer	Dr Caleb Scharf	Principal investigator
object	ABELL 1204	Source name
dtcycle	0	
cycle	P	events from which exps? Prim/Second/Both
ra_targ	168.325	Observer's specified target RA [deg]
dec_targ	17.6025	Observer's specified target Dec [deg]
ra_nom	168.28682589428	Nominal RA [deg]
dec_nom	17.586386441535	Nominal Dec [deg]
roll_nom	246.48337463061	Nominal Roll [deg]
revision	4	Processing version of data
ontime	23905.88591814	Sum of GTIs [s]
livetime	23593.537919363	Livetime [s]
ontime0	23908.903758377	Sum of GTIs [s]
ontime1	23908.944798365	Sum of GTIs [s]
ontime2	23902.703917876	Sum of GTIs [s]
ontime3	23905.88591814	Sum of GTIs [s]
ontime6	23908.862718374	Sum of GTIs [s]
l2events	99997	Number of level 2 events



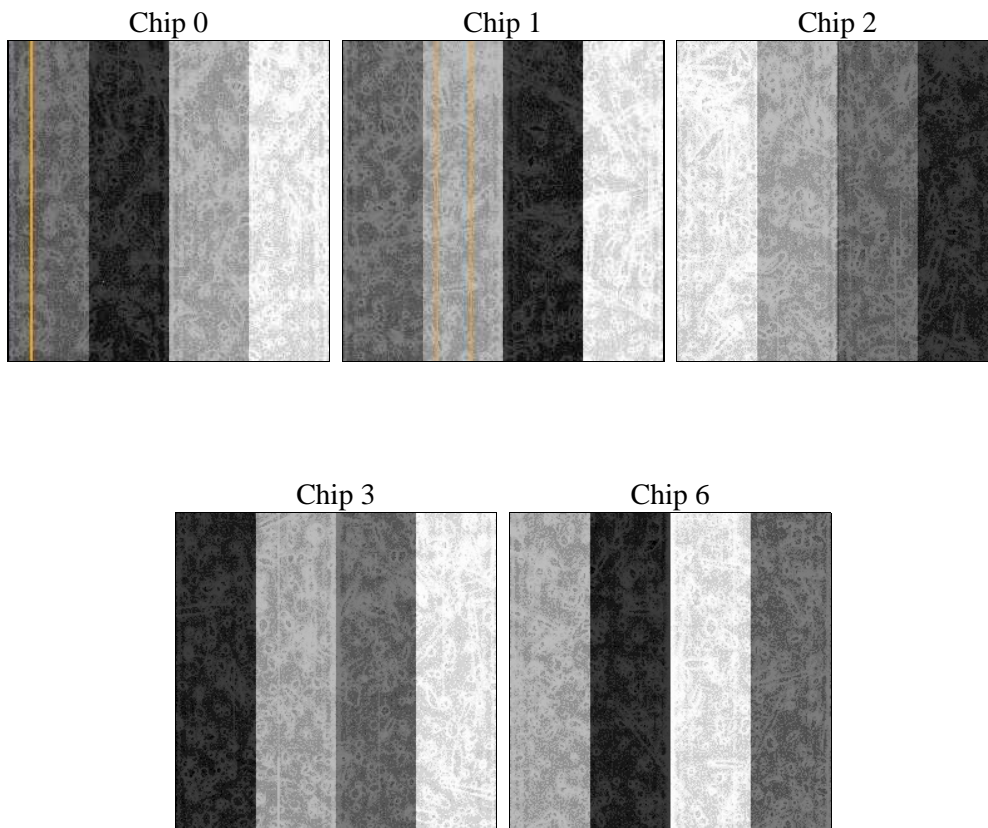
2 OBI

2.1 OBI

2.1.1 Images



2.1.2 Bias



2.1.3 Parameters

obi_num	0	Obi number	sched_exp_time	23800.000000	[s] Scheduled observation exposure time
ascdsver	8.4.5	Processing system revision	ontime	23905.88591814	Sum of GTIs [s]
caldbver	4.5.1.1	 	ontime0	23908.903758377	Sum of GTIs [s]
date	2012-09-17T02:03:52	Date and time of file creation	ontime1	23908.944798365	Sum of GTIs [s]
revision	4	Processing version of data	ontime2	23902.703917876	Sum of GTIs [s]
			ontime3	23905.88591814	Sum of GTIs [s]
			ontime6	23908.862718374	Sum of GTIs [s]
			l1events	785844	Number of level 1 events

2.1.4 Events

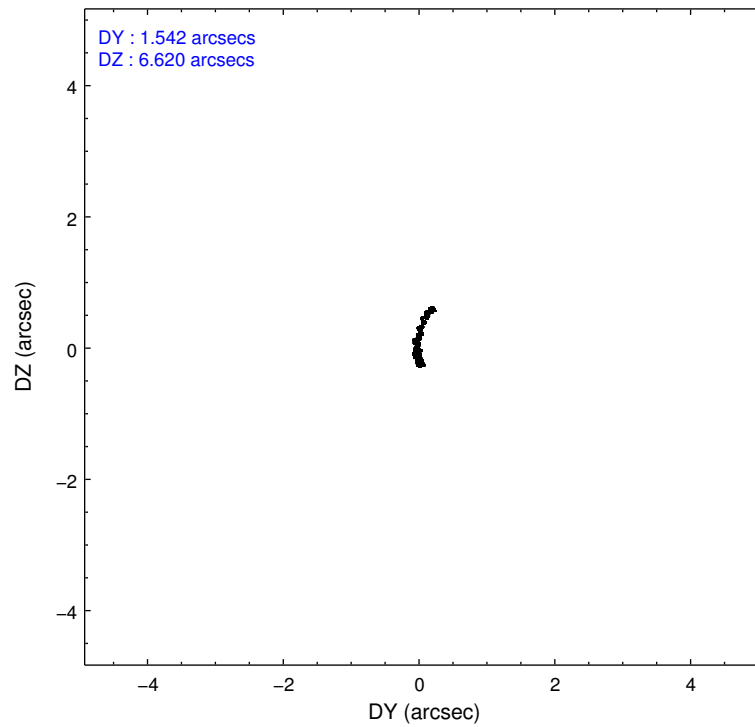
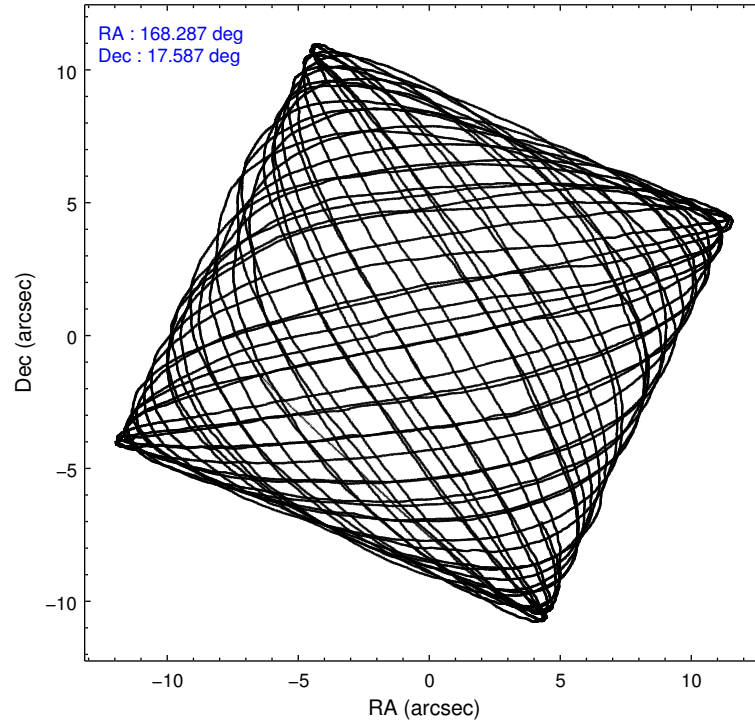
	ccd 0	ccd 1	ccd 2	ccd 3	ccd 6
level 1 events	144526	144015	157771	183684	155848
rejected events	126255	124968	139889	142443	138589
rejected %	87%	86%	88%	77%	88%

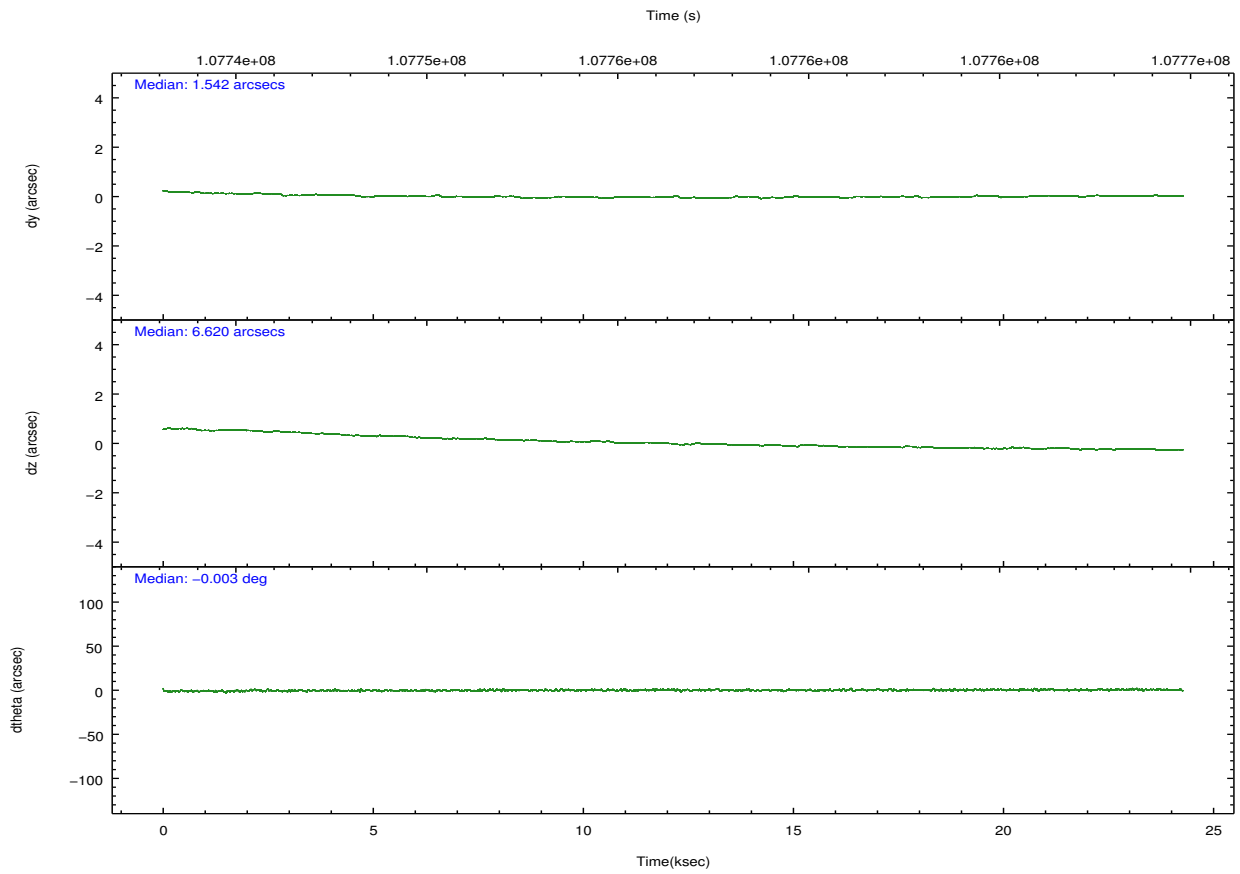
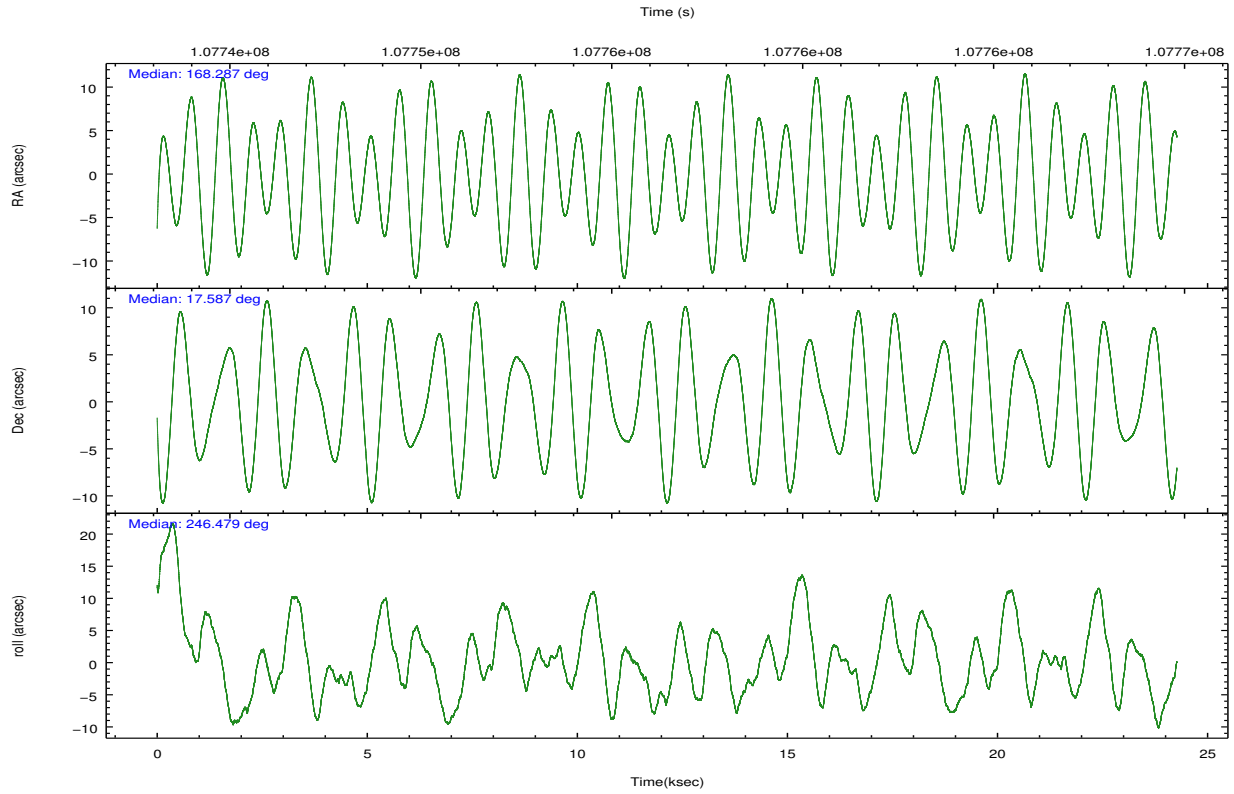
	ccd 0	ccd 1	ccd 2	ccd 3	ccd 6
grade 0 events	7771	7784	7979	27469	6859
	5%	5%	5%	14%	4%
grade 1 events	72	77	70	168	59
	0%	0%	0%	0%	0%
grade 2 events	3838	3937	3654	5682	3515
	2%	2%	2%	3%	2%
grade 3 events	1857	1909	1575	2197	1759
	1%	1%	0%	1%	1%
grade 4 events	1702	1935	1662	2320	1672
	1%	1%	1%	1%	1%
grade 5 events	5526	5945	5193	6038	6408
	3%	4%	3%	3%	4%
grade 6 events	3103	3489	3013	3579	3454
	2%	2%	1%	1%	2%
grade 7 events	120657	118939	134625	136231	132122
	83%	82%	85%	74%	84%

2.2 Compared Parameters

Parameter	Planned	Actual	Parameter	Planned	Actual
Instrument	ACIS	ACIS	Obspar format version number	7	7
Detector	ACIS-01236	ACIS-01236	Obspar file type	PREDICTED	ACTUAL
Grating	NONE	NONE	Obspar update status	NONE	UPDATED
Data mode	VFAINT	VFAINT	Number of optional ACIS chips dropped	0	0
Observation mode	POINTING	POINTING	On-chip summing requested	N	N
[deg] Pointing RA	168.283550	168.2868258942849	Subarray requested	NONE	NONE
[deg] Pointing Dec	17.613679	17.58638644153526	Alternating exposures requested	N	N
[deg] Pointing Roll	246.275684	246.4833746306082	[s] Primary exposure time	0.000000	3.1
[mm] SIM focus pos	-0.782348	-0.7809083437167272			
[mm] SIM defocus	0	0.001439871863259334			
[mm] SIM translation stage pos	-233.592463	-233.5874344608287			
[mm] SIM translation stage offset	0	-0.005018542100998502			
[s] Observation start time (MET)	107744783.184000	107743677.25573			
Observation start date	2001-06-01T01:05:19	2001-06-01T00:47:57			
[s] Observation end time (MET)	107768583.184000	107768908.65671			
Observation end date	2001-06-01T07:41:59	2001-06-01T07:48:28			
Read mode	TIMED	TIMED			

2.3 Aspect



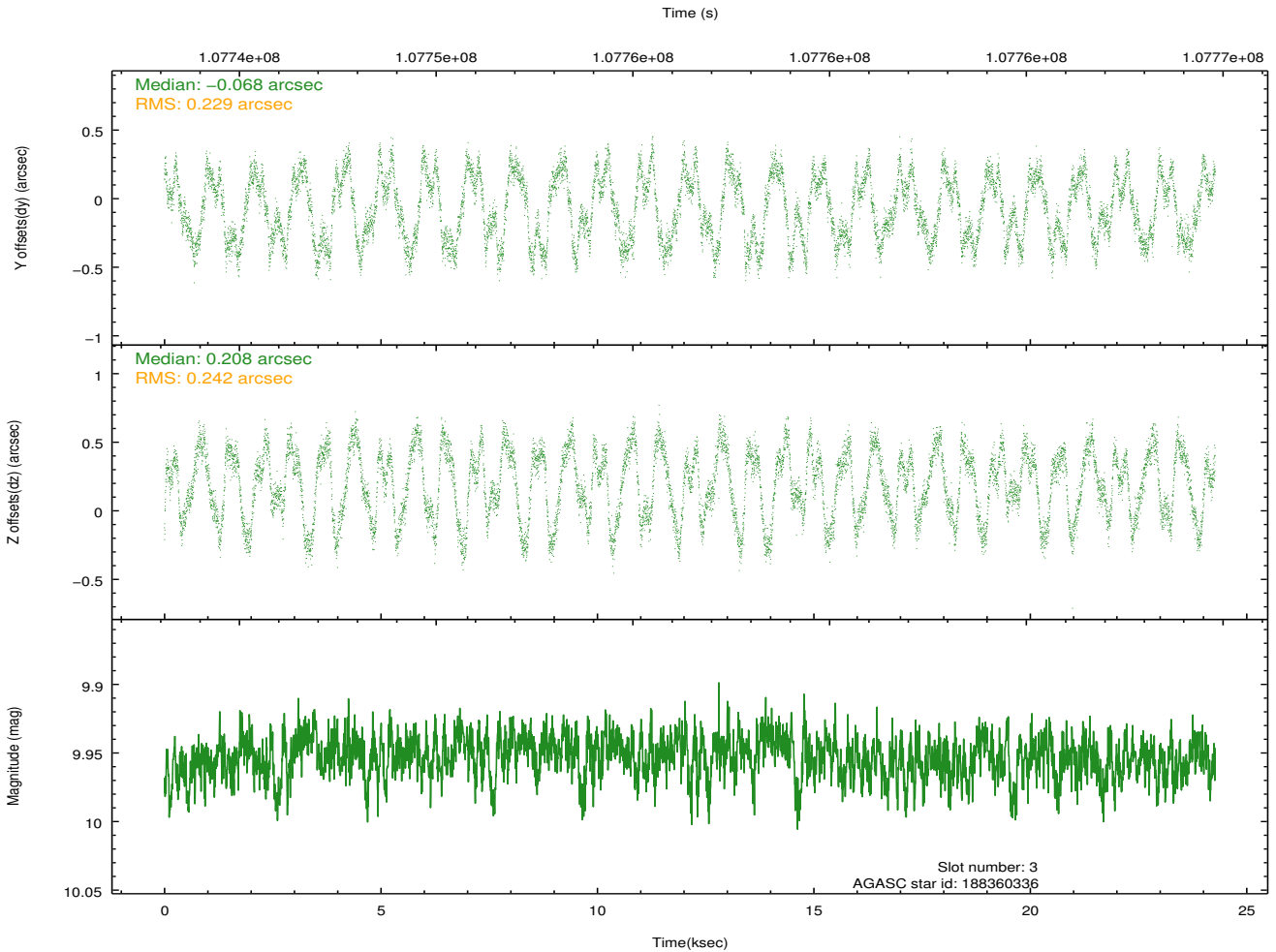
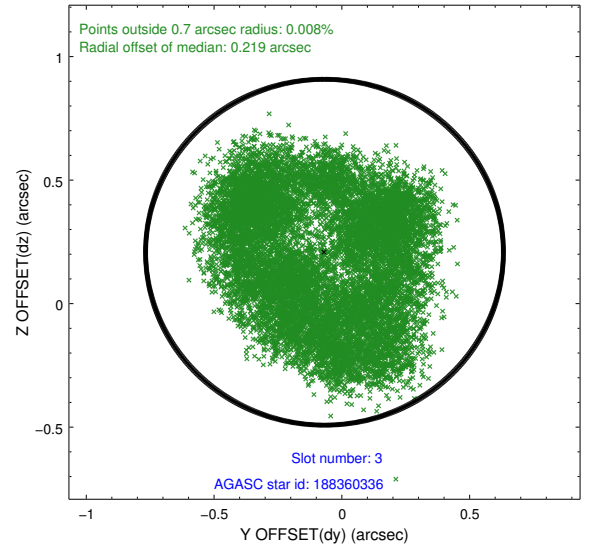
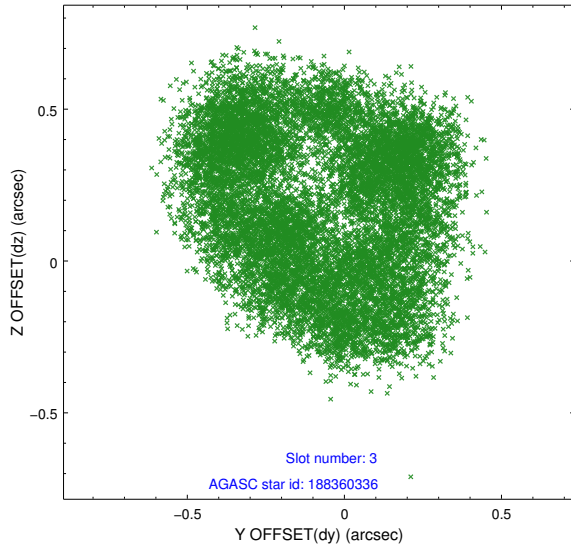


Slot Statistics

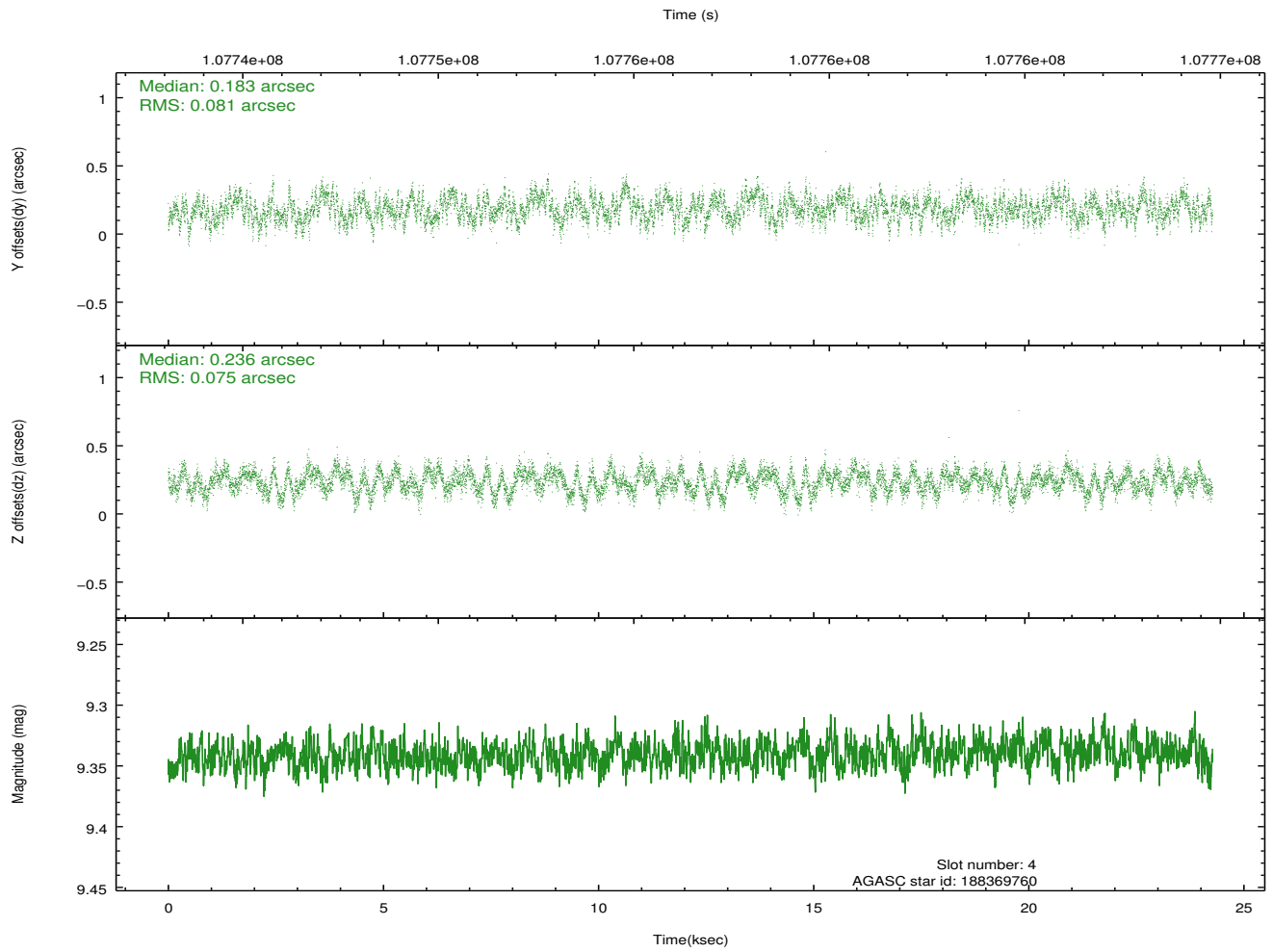
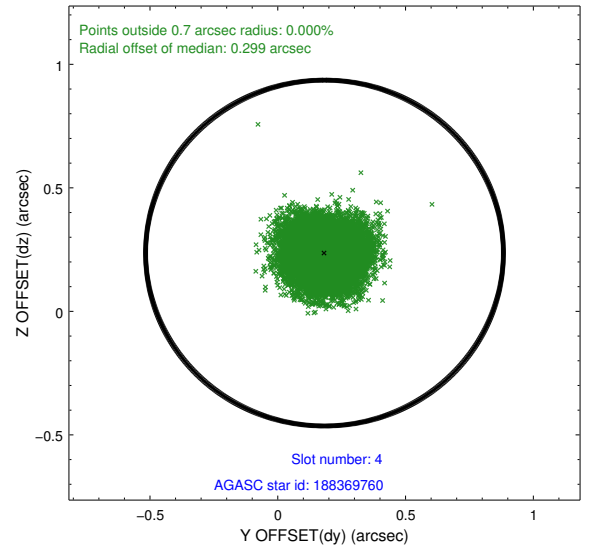
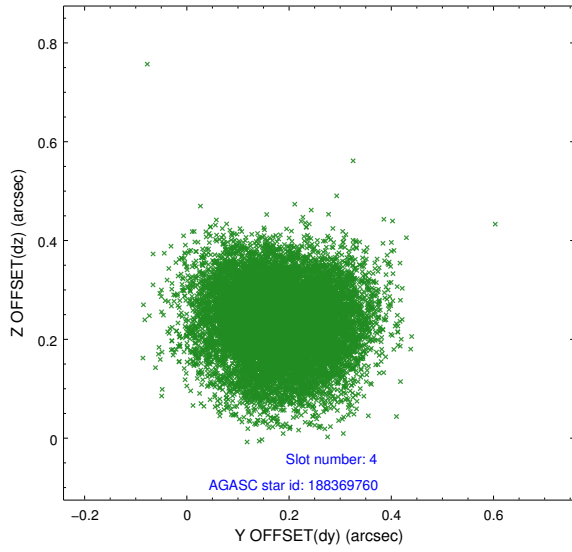
slot	status	id	mag	n_pts	med_dy	med_dz	dr1	dr2	ra	dec	mean_y	mean_z
0	FID	ACIS-I-2	7.15	5918	-0.038	-0.075	0.010	0.017	0.000000	0.000000	-755.92	-836.52
1	FID	ACIS-I-4	7.18	5918	-0.034	0.050	0.007	0.012	0.000000	0.000000	2158.06	1069.75
2	FID	ACIS-I-5	7.23	5918	-0.029	0.095	0.009	0.015	0.000000	0.000000	-1809.60	1067.75
3	GUIDE	188360336	9.95	11821	-0.068	0.208	0.368	0.490	168.606298	17.406968	235.01	1314.37
4	GUIDE	188369760	9.34	11834	0.183	0.236	0.120	0.184	168.571513	16.928696	1858.81	1900.40
5	GUIDE	187833640	9.78	11800	-0.003	-0.220	0.167	0.266	167.569509	17.697691	705.33	-2365.38
6	GUIDE	187836256	9.35	11838	-0.132	-0.178	0.116	0.178	167.909884	18.172303	-1327.19	-1980.16
7	GUIDE	188363792	10.95	11601	0.029	-0.014	0.255	0.413	168.701263	17.190563	815.60	1927.44

2.4 Star Slots

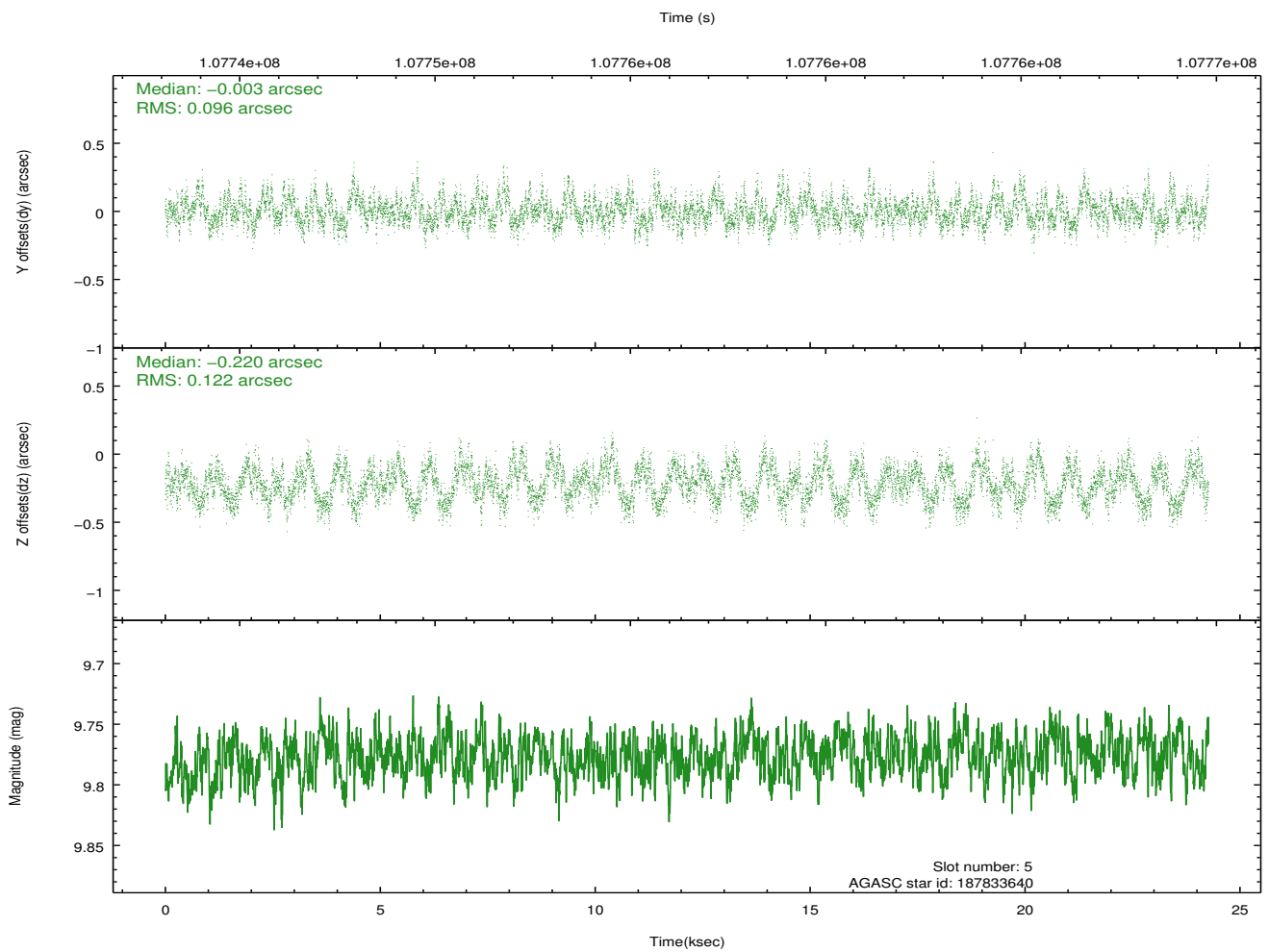
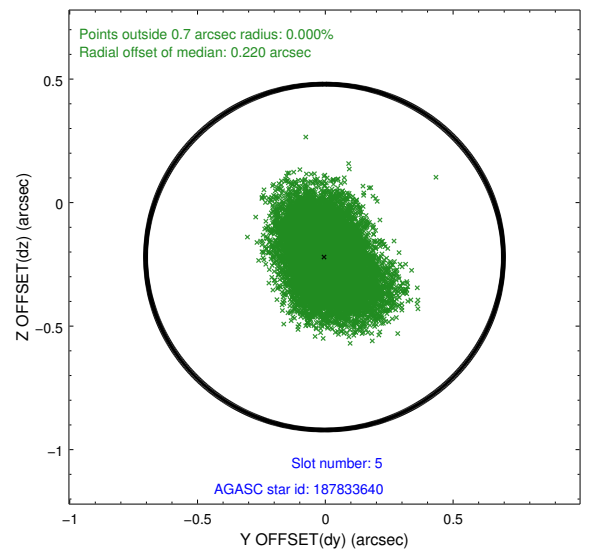
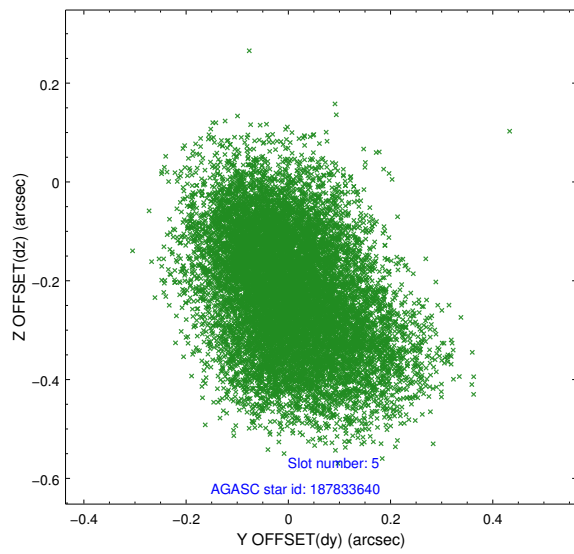
2.4.1 Slot 3



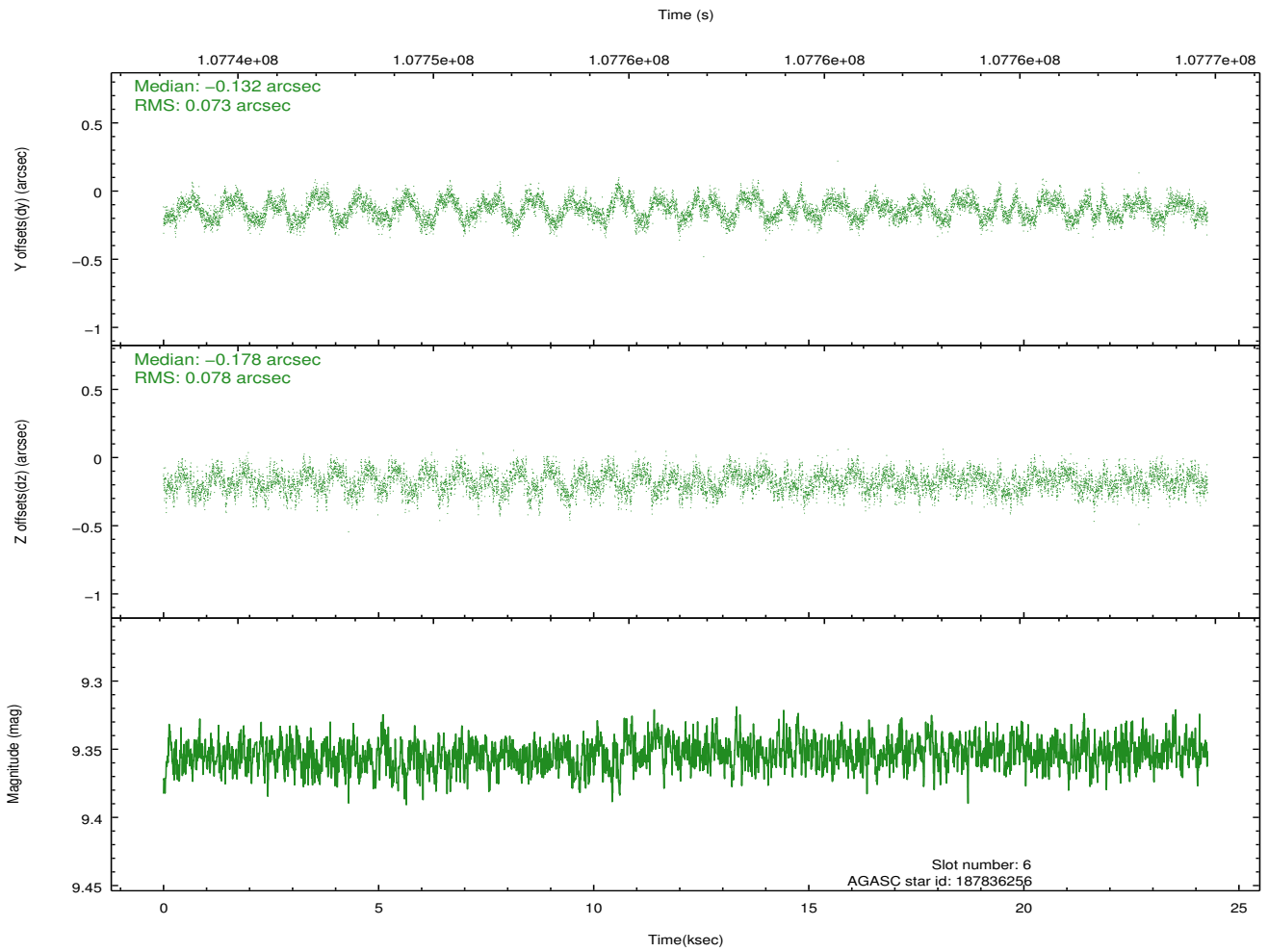
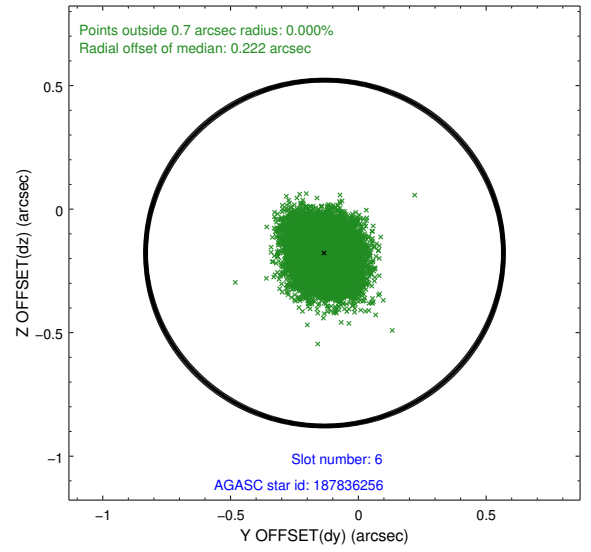
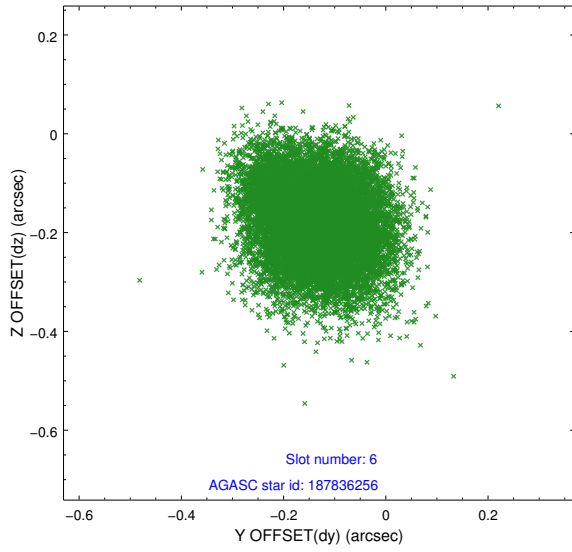
2.4.2 Slot 4



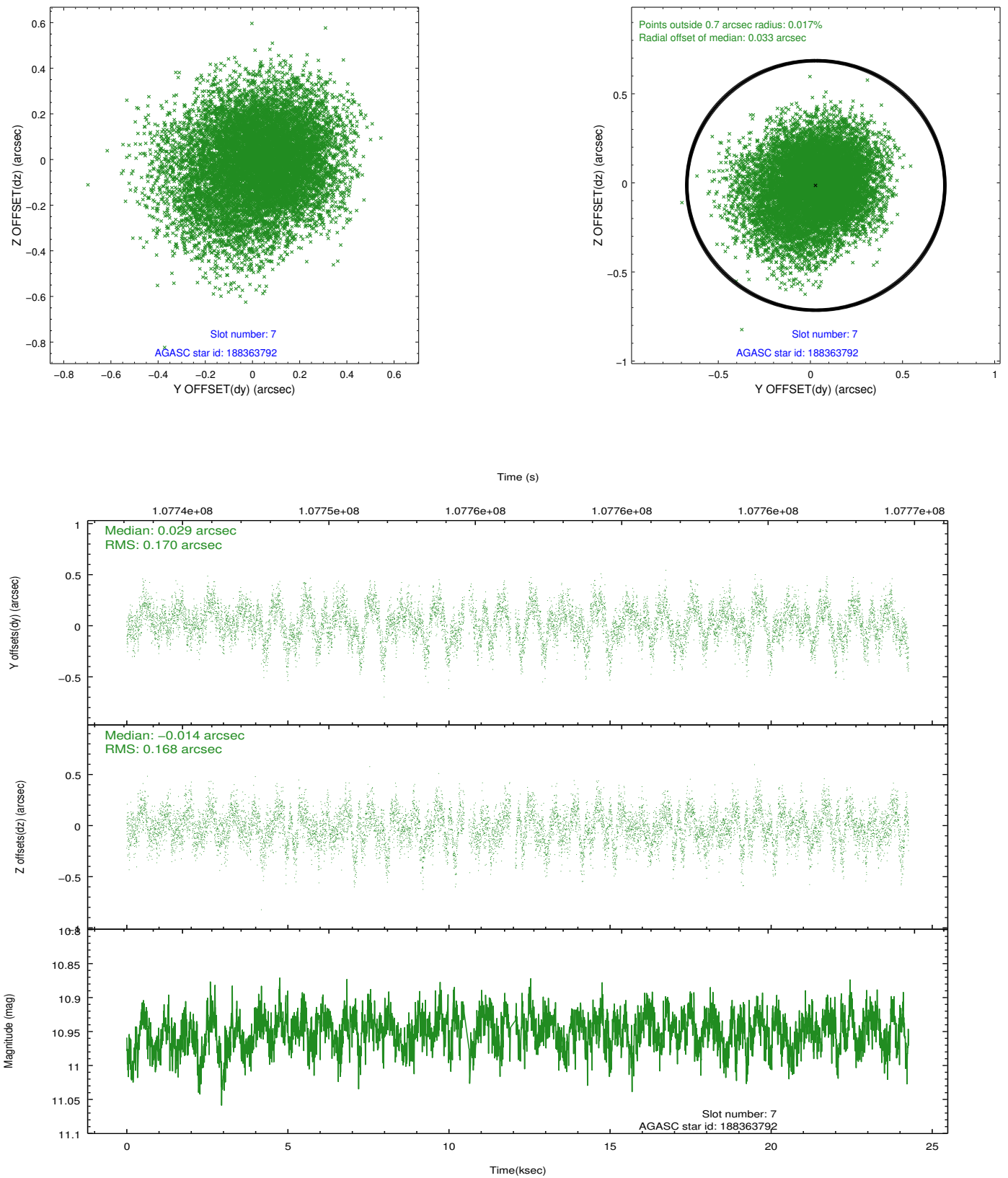
2.4.3 Slot 5



2.4.4 Slot 6

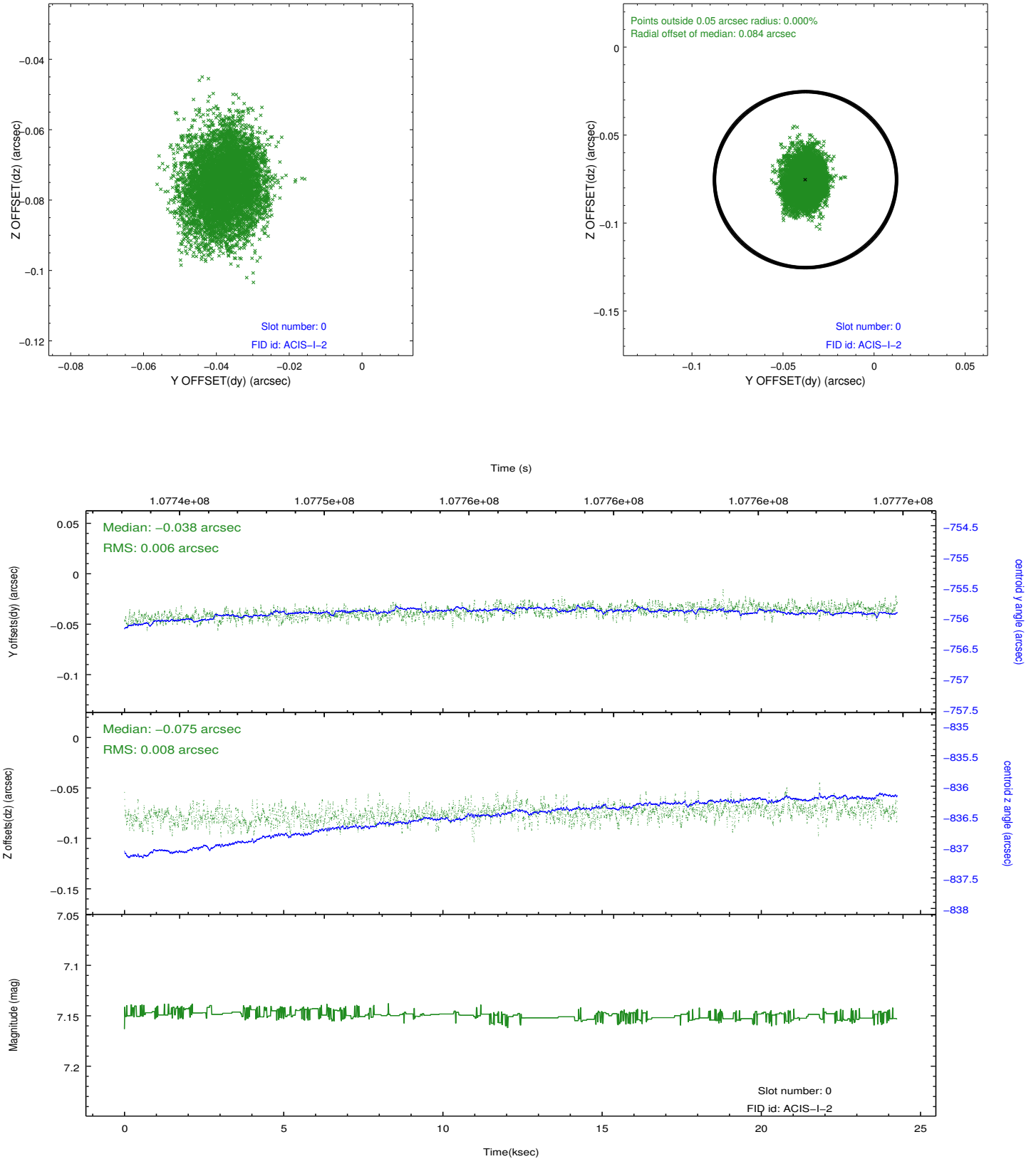


2.4.5 Slot 7

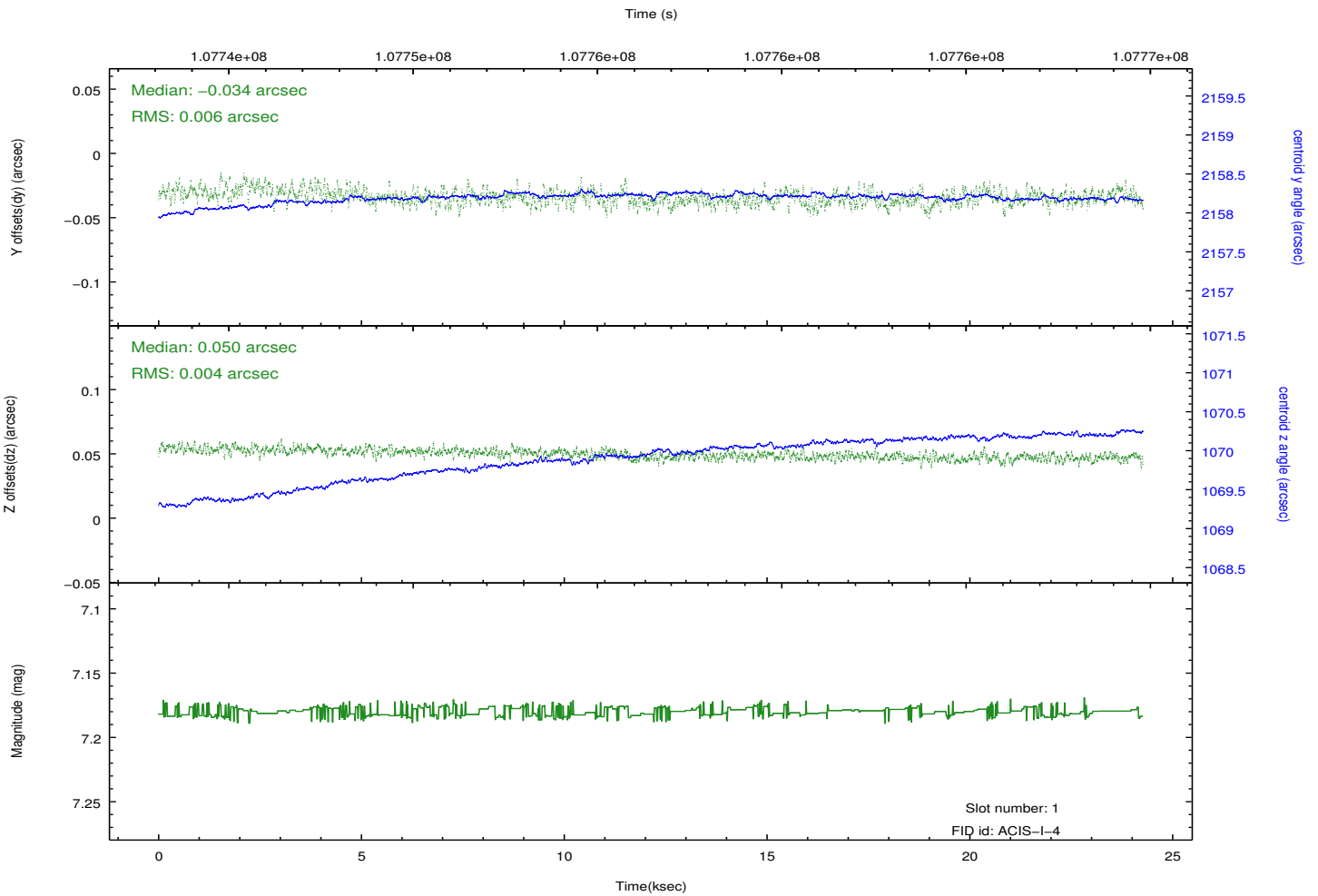
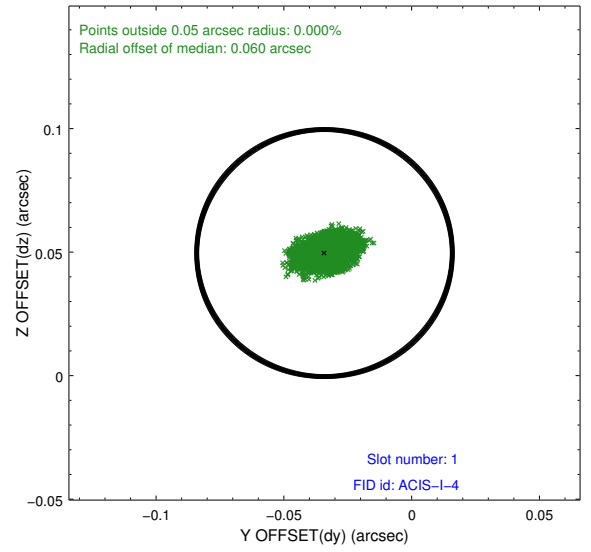
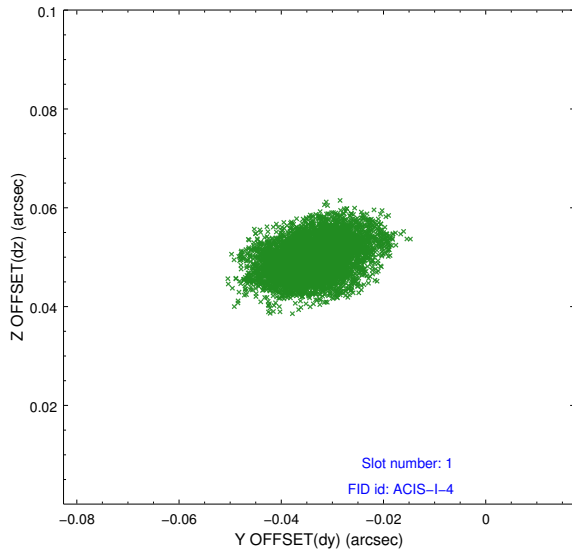


2.5 FID Slots

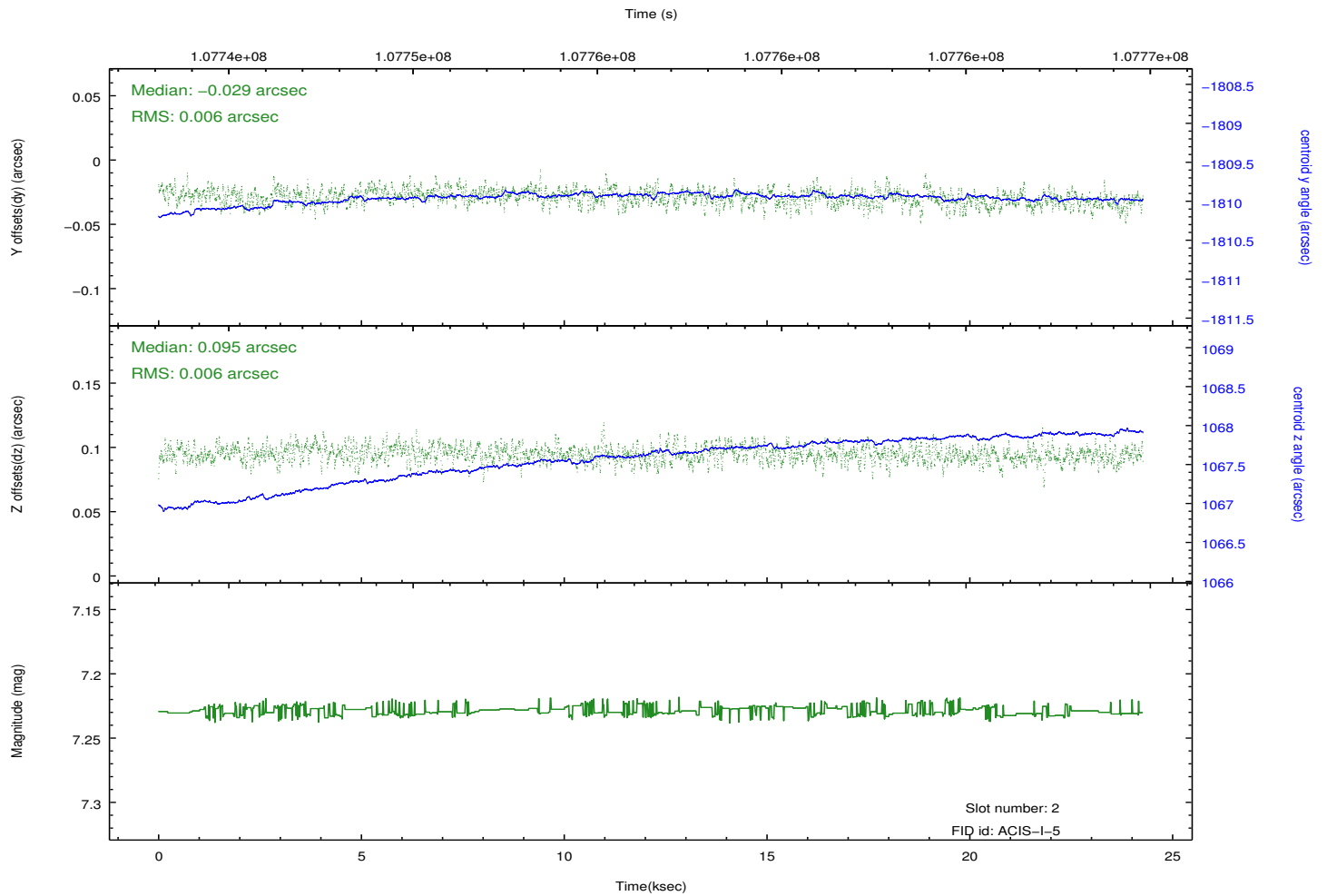
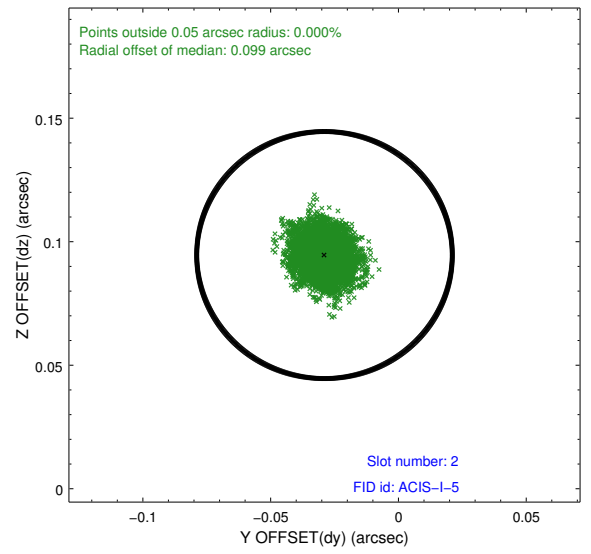
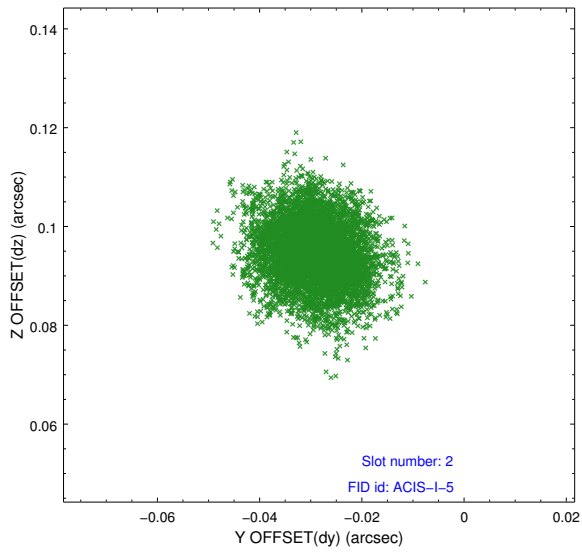
2.5.1 Slot 0



2.5.2 Slot 1



2.5.3 Slot 2



A Summary

A.1 Status

V&V Scientist	Jen Lauer
V&V Date (YYYY-MM-DD)	2012.09.19
V&V Edition	1
V&V Disposition and Status	OK
V&V Charge Time	23.9

A.2 Comments

Target coords correspond to peak in surface brightness, which is slightly offset from listed Abell cluster central coordinates.