

V&V Reference Report

L2 ASCDS Version : 8.4.5

Observation 2235 - L2 Version 3
Chandra X-Ray Center

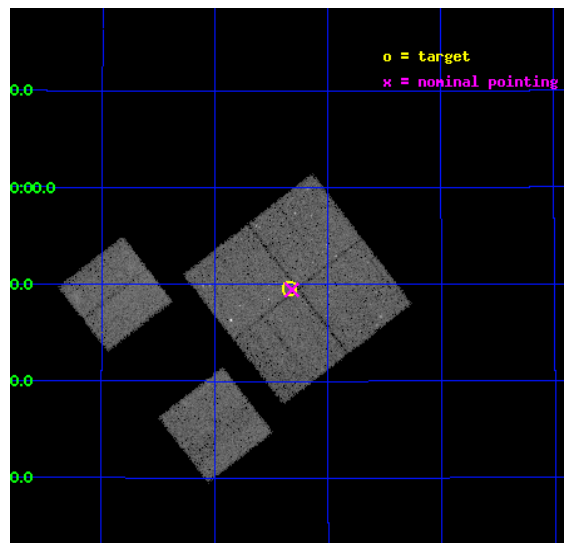
L2 Processing Date : Sep 17 2012

Contents

1	Front	2
2	OBI	3
2.1	OBI	3
2.1.1	Images	3
2.1.2	Bias	3
2.1.3	Parameters	4
2.1.4	Events	4
2.2	Compared Parameters	5
2.3	Aspect	6
2.4	Star Slots	9
2.4.1	Slot 3	9
2.4.2	Slot 4	10
2.4.3	Slot 5	11
2.4.4	Slot 6	12
2.4.5	Slot 7	13
2.5	FID Slots	14
2.5.1	Slot 0	14
2.5.2	Slot 1	15
2.5.3	Slot 2	16
A	Summary	17
A.1	Status	17
A.2	Comments	17

1 Front

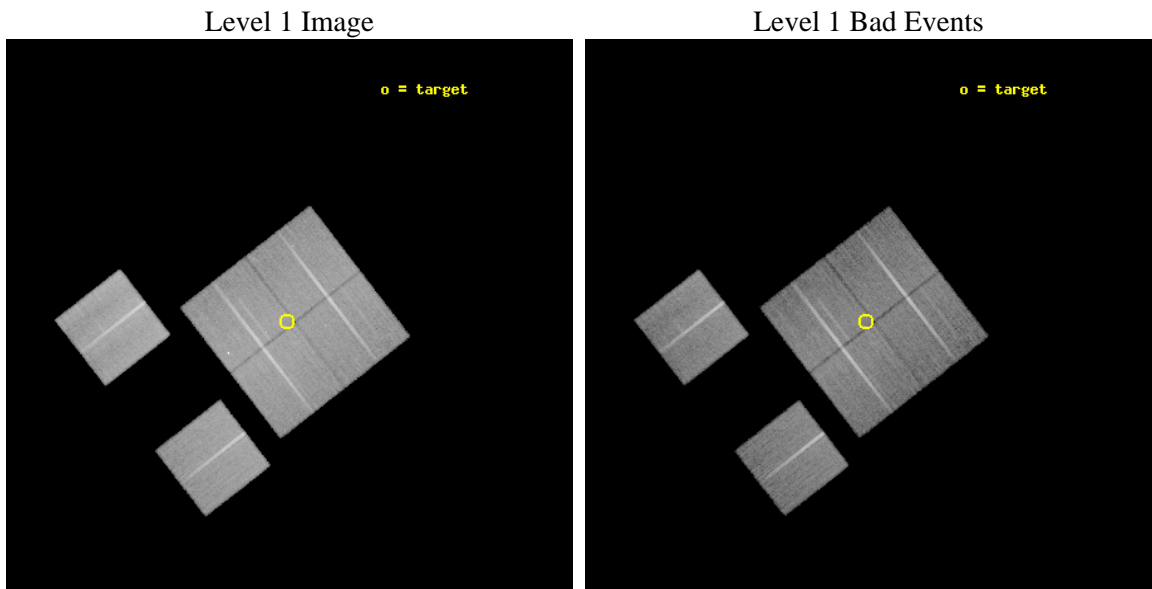
seq_num	900062	Sequence number
obs_id	2235	Observation id
title	A COMBINED CHANDRA/XMM ATTACK ON THE ASTROPHYSICS OF THE HARD X-RAY BACKGROUND.	Proposal title
observer	Prof. Ian McHardy	Principal investigator
object	XMM 13HR - FIELD 4	Source name
dtcycle	0	
cycle	P	events from which exps? Prim/Second/Both
ra_targ	203.585229	Observer's specified target RA [deg]
dec_targ	37.82658	Observer's specified target Dec [deg]
ra_nom	203.57998561132	Nominal RA [deg]
dec_nom	37.824264879951	Nominal Dec [deg]
roll_nom	232.20189216818	Nominal Roll [deg]
revision	3	Processing version of data
ontime	30387.200028285	Sum of GTIs [s]
livetime	30002.419004552	Livetime [s]
ontime0	30377.477147549	Sum of GTIs [s]
ontime1	30383.95906803	Sum of GTIs [s]
ontime2	30387.200028285	Sum of GTIs [s]
ontime3	30387.200028285	Sum of GTIs [s]
ontime6	30383.959038123	Sum of GTIs [s]
ontime8	30383.959038123	Sum of GTIs [s]
l2events	122514	Number of level 2 events



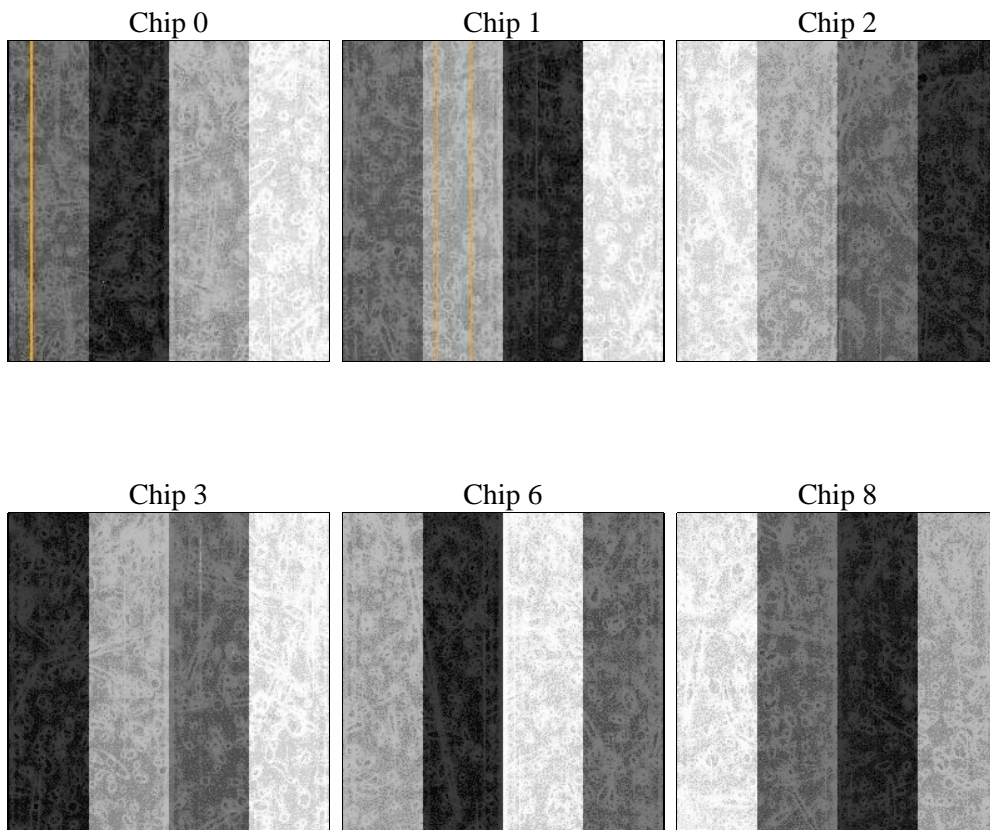
2 OBI

2.1 OBI

2.1.1 Images



2.1.2 Bias



2.1.3 Parameters

obi_num	1	Obi number	sched_exp_time	30425.000000	[s] Scheduled observation exposure time
ascdsver	8.4.5	Processing system revision	ontime	30387.200028285	Sum of GTIs [s]
caldbver	4.5.1.1	 	ontime0	30377.477147549	Sum of GTIs [s]
date	2012-09-17T20:08:50	Date and time of file creation	ontime1	30383.95906803	Sum of GTIs [s]
revision	3	Processing version of data	ontime2	30387.200028285	Sum of GTIs [s]
			ontime3	30387.200028285	Sum of GTIs [s]
			ontime6	30383.959038123	Sum of GTIs [s]
			ontime8	30383.959038123	Sum of GTIs [s]
			l1events	1218508	Number of level 1 events

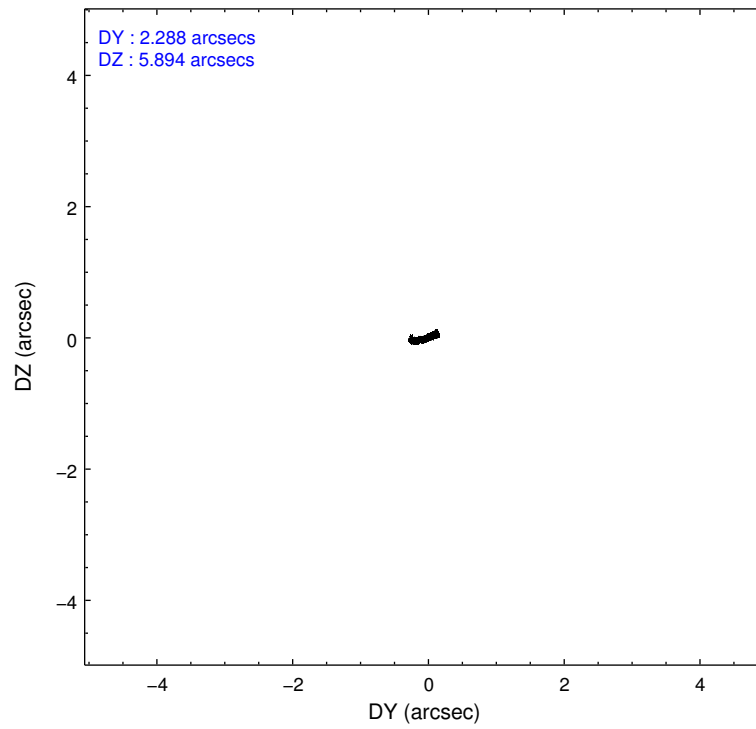
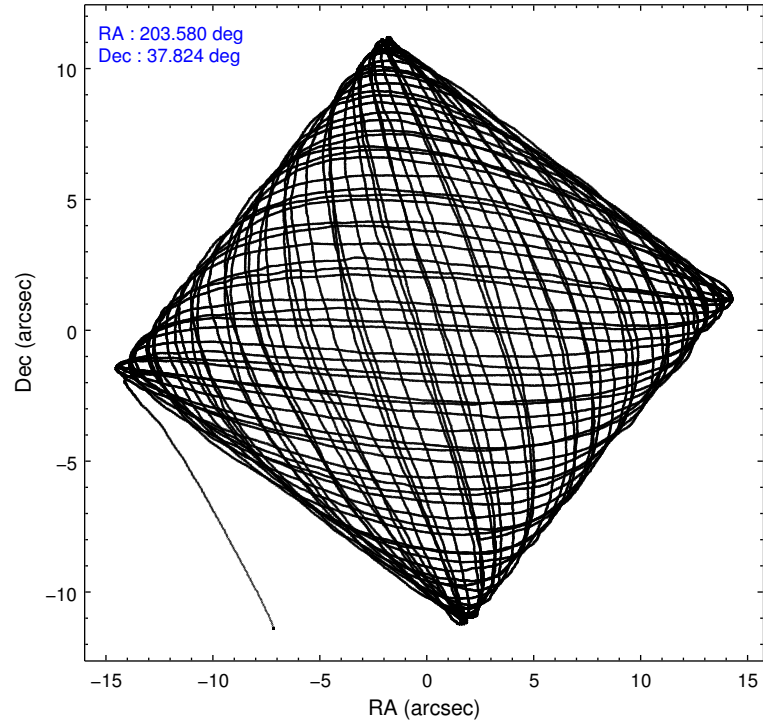
2.1.4 Events

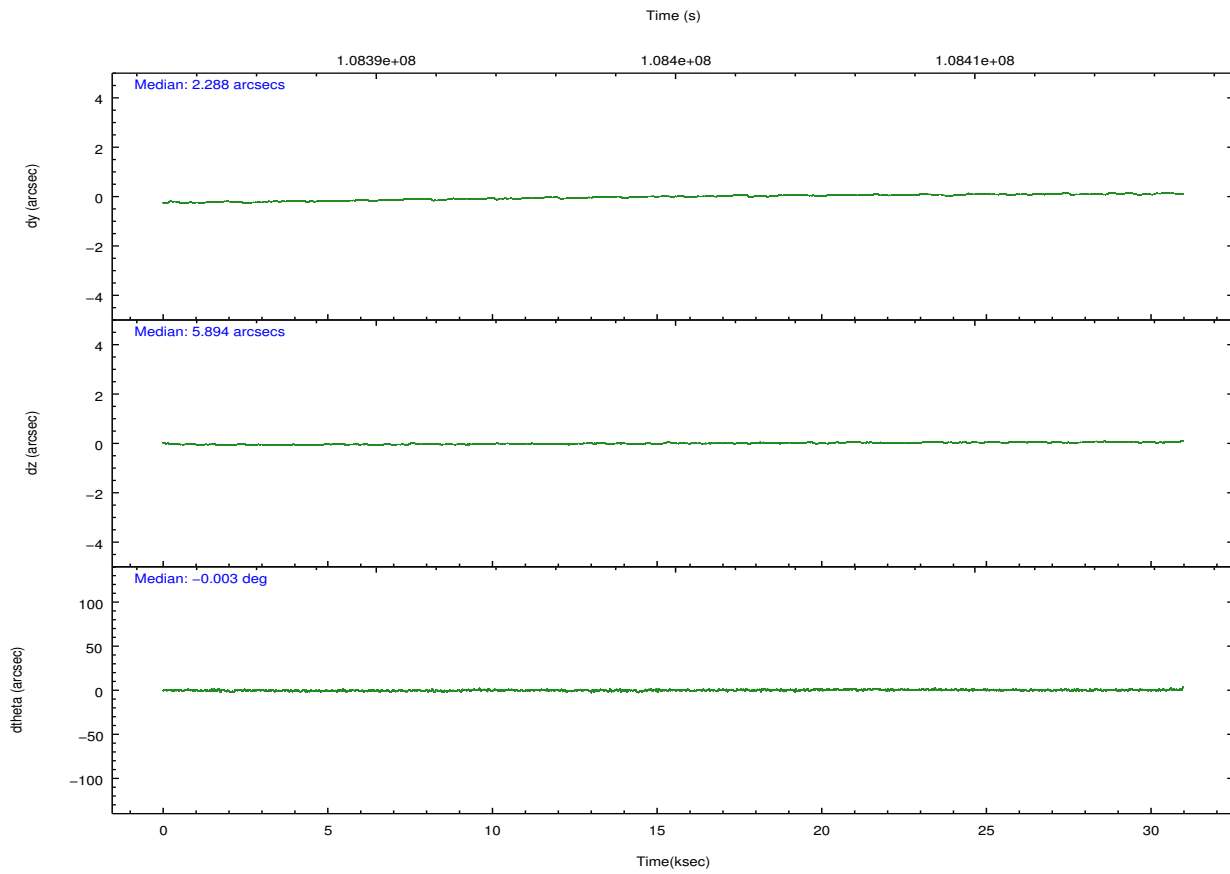
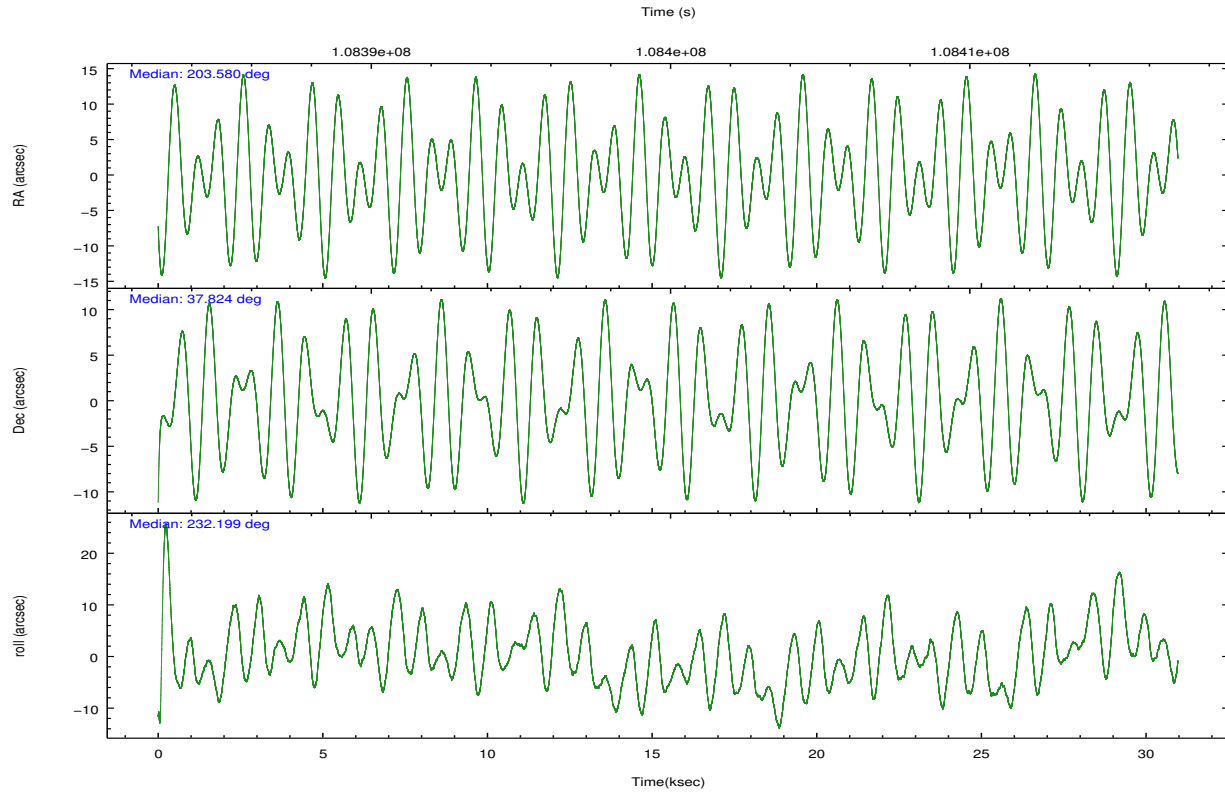
	ccd 0	ccd 1	ccd 2	ccd 3	ccd 6	ccd 8		ccd 0	ccd 1	ccd 2	ccd 3	ccd 6	ccd 8
level 1 events	179021	182006	200465	202496	195628	258892	grade 0 events	9867	10348	8722	11726	9085	16821
rejected events	155715	157530	178747	177536	173251	206179		5%	5%	4%	5%	4%	6%
rejected %	86%	86%	89%	87%	88%	79%	grade 1 events	90	80	81	115	76	176
								0%	0%	0%	0%	0%	0%
							grade 2 events	5048	5011	4856	4877	4592	11266
								2%	2%	2%	2%	2%	4%
							grade 3 events	2253	2431	2160	2167	2212	5738
								1%	1%	1%	1%	1%	2%
							grade 4 events	2029	2343	2091	2138	2146	5480
								1%	1%	1%	1%	1%	2%
							grade 5 events	6865	7381	6639	7645	8100	10751
								3%	4%	3%	3%	4%	4%
							grade 6 events	4113	4346	3894	4059	4344	13412
								2%	2%	1%	2%	2%	5%
							grade 7 events	148756	150066	172022	169769	165073	195248
								83%	82%	85%	83%	84%	75%

2.2 Compared Parameters

Parameter	Planned	Actual	Parameter	Planned	Actual
Instrument	ACIS	ACIS	Obspar format version number	7	7
Detector	ACIS-012368	ACIS-012368	Obspar file type	PREDICTED	ACTUAL
Grating	NONE	NONE	Obspar update status	NONE	UPDATED
Data mode	VFAINT	VFAINT	Number of optional ACIS chips dropped	0	0
Observation mode	POINTING	POINTING	On-chip summing requested	N	N
[deg] Pointing RA	203.584668	203.5799856113151	Subarray requested	NONE	NONE
[deg] Pointing Dec	37.851460	37.82426487995075	Alternating exposures requested	N	N
[deg] Pointing Roll	231.990340	232.2018921681848	[s] Primary exposure time	0.000000	3.2
[mm] SIM focus pos	-0.782348	-0.7809083437167272			
[mm] SIM defocus	0	0.001439871863259334			
[mm] SIM translation stage pos	-233.592463	-233.5874344608287			
[mm] SIM translation stage offset	0	-0.005018542100998502			
[s] Observation start time (MET)	108384975.184000	108383826.68066			
Observation start date	2001-06-08T10:55:11	2001-06-08T10:37:06			
[s] Observation end time (MET)	108415400.184000	108415534.03189			
Observation end date	2001-06-08T19:22:16	2001-06-08T19:25:34			
Read mode	TIMED	TIMED			

2.3 Aspect



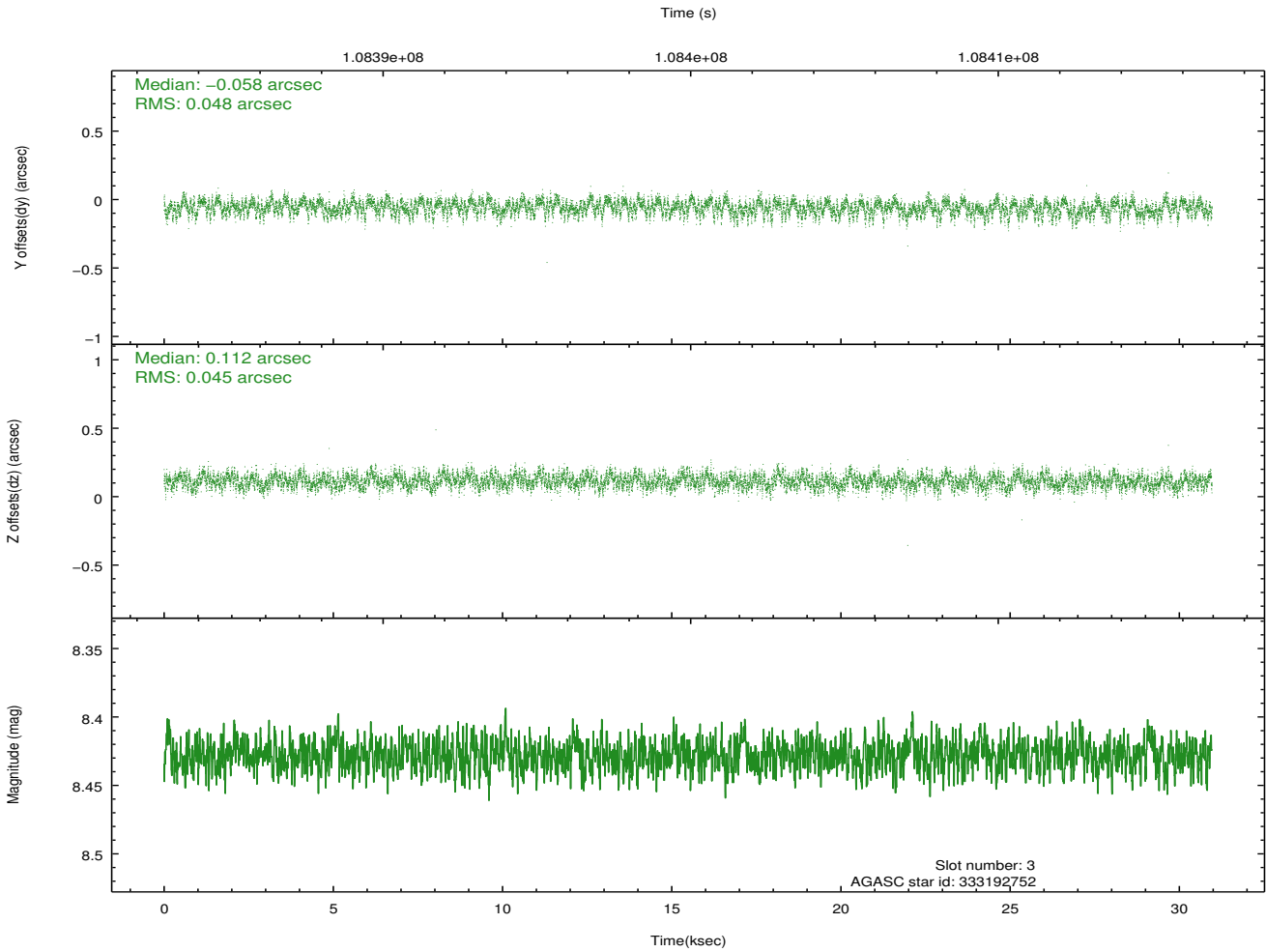
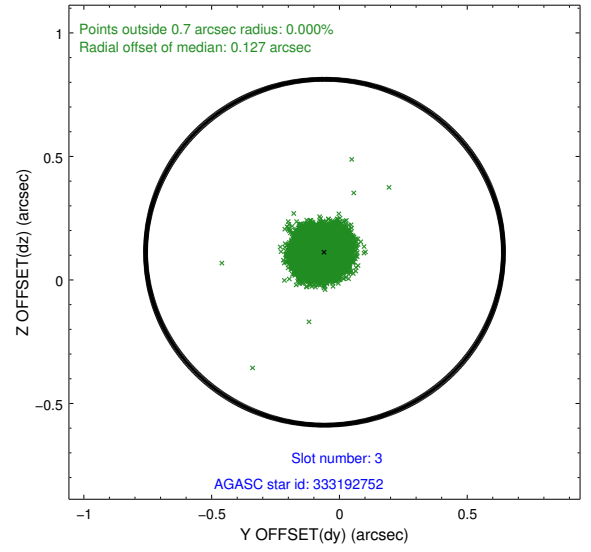
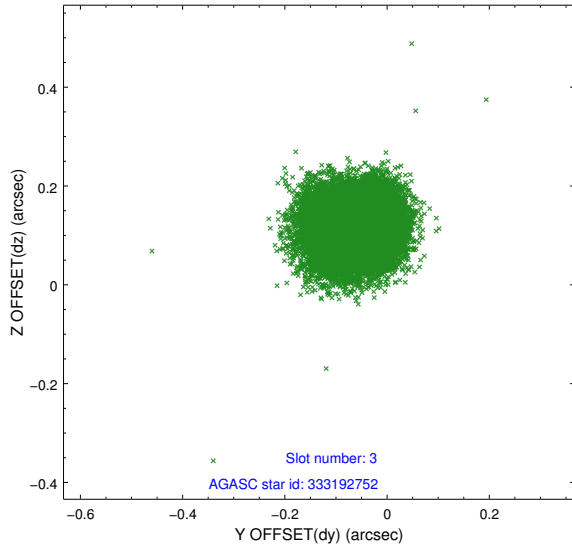


Slot Statistics

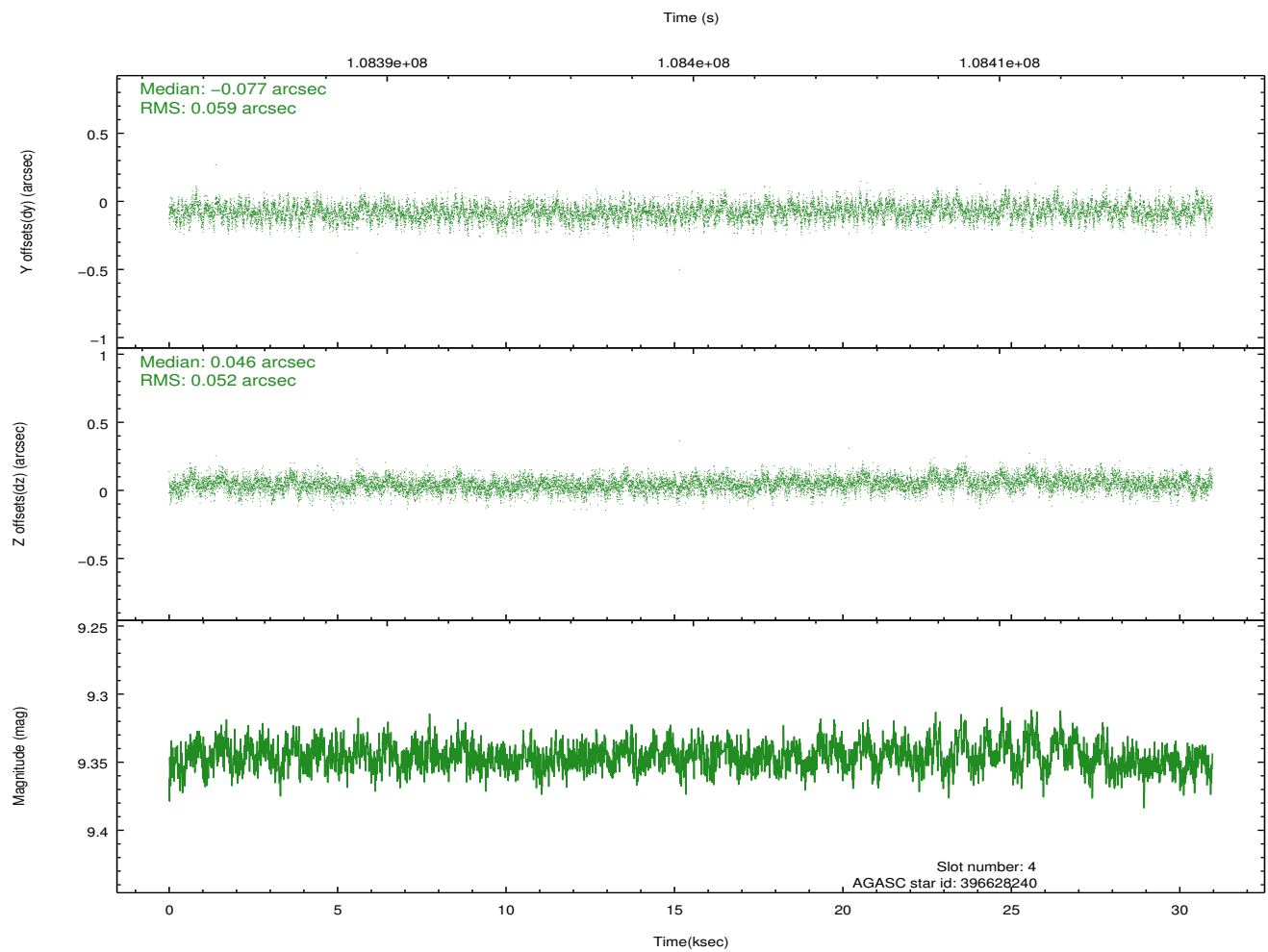
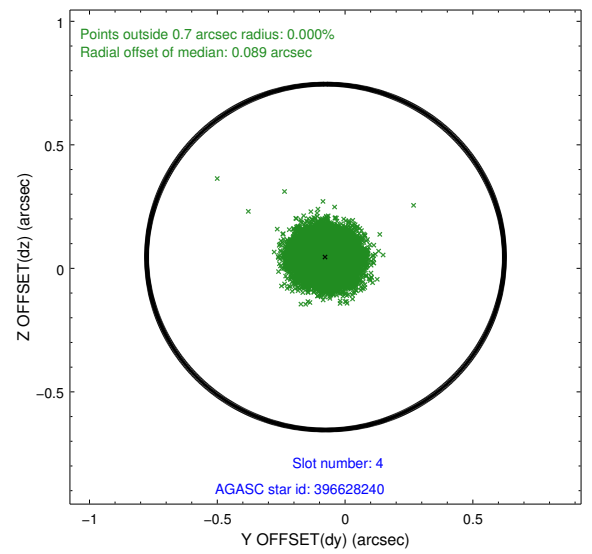
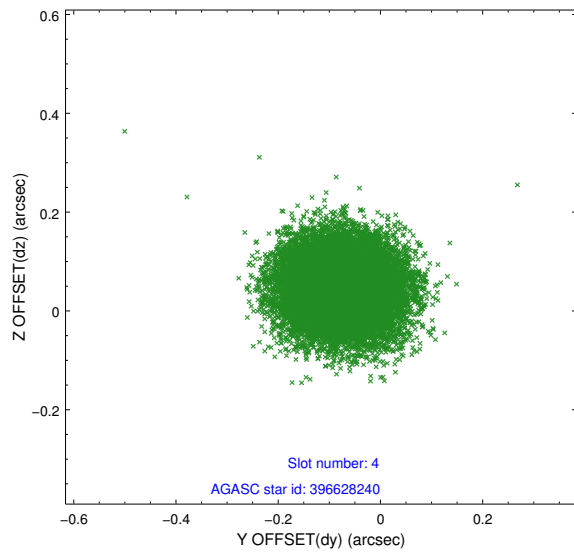
slot	status	id	mag	n_pts	med_dy	med_dz	dr1	dr2	ra	dec	mean_y	mean_z
0	FID	ACIS-I-2	7.15	7554	-0.035	-0.061	0.013	0.021	0.000000	0.000000	-756.65	-835.69
1	FID	ACIS-I-4	7.18	7552	-0.008	0.045	0.015	0.022	0.000000	0.000000	2157.39	1070.58
2	FID	ACIS-I-5	7.23	7552	-0.056	0.085	0.012	0.019	0.000000	0.000000	-1810.42	1068.52
3	GUIDE	333192752	8.43	15105	-0.058	0.112	0.071	0.111	203.839277	37.405848	814.45	1561.55
4	GUIDE	396628240	9.35	15105	-0.077	0.046	0.084	0.137	203.780849	38.306087	-1631.51	-571.02
5	GUIDE	396632024	9.52	14935	-0.015	-0.041	0.108	0.178	204.531533	37.981693	-2035.09	1820.10
6	GUIDE	396631416	9.62	15088	0.036	-0.117	0.086	0.141	203.523145	37.637364	715.07	337.00
7	GUIDE	396632368	9.64	15097	0.112	-0.001	0.100	0.159	203.634403	37.612976	589.05	640.92

2.4 Star Slots

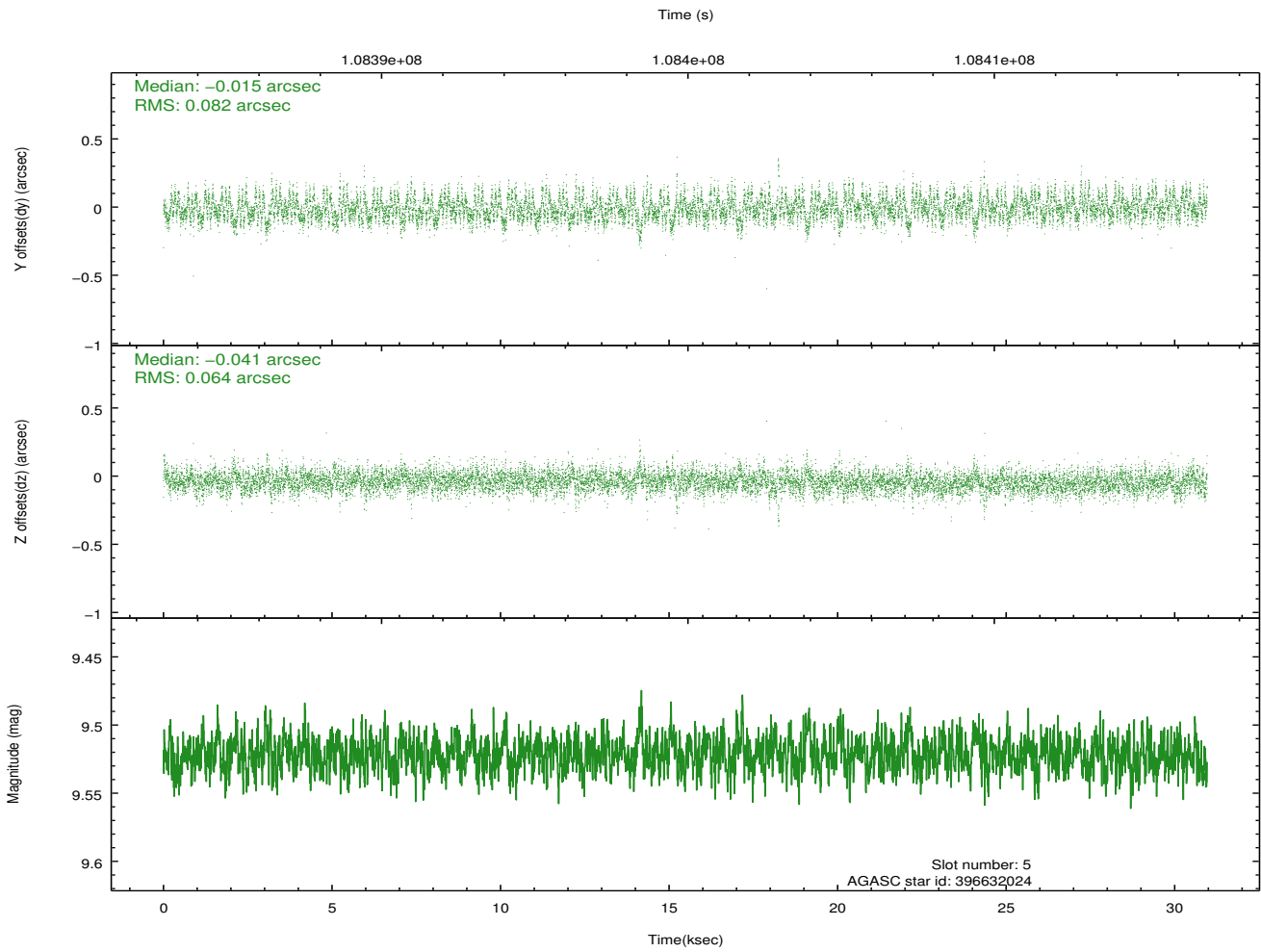
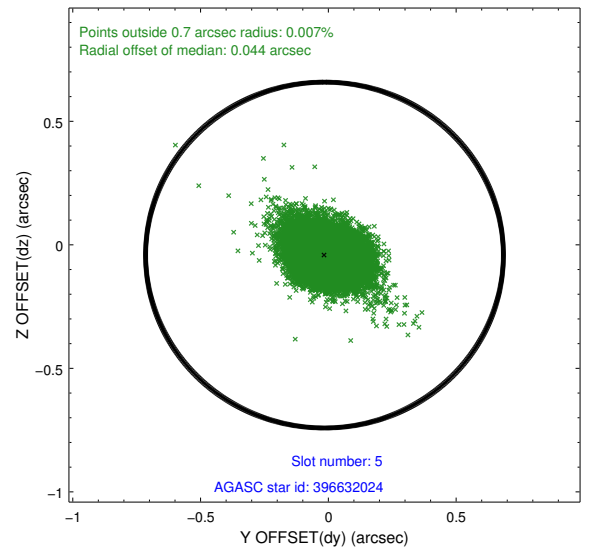
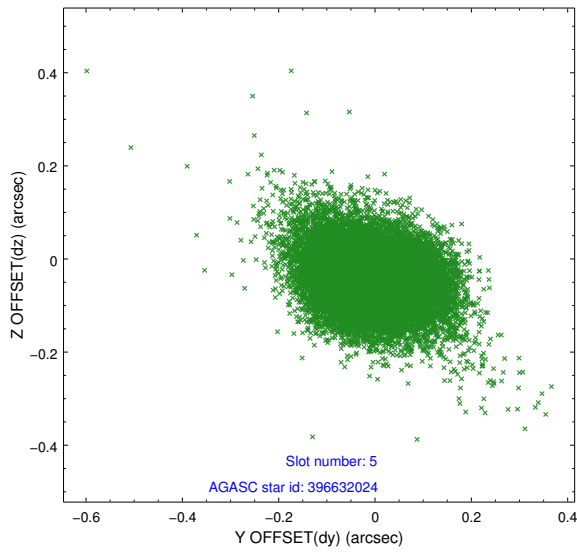
2.4.1 Slot 3



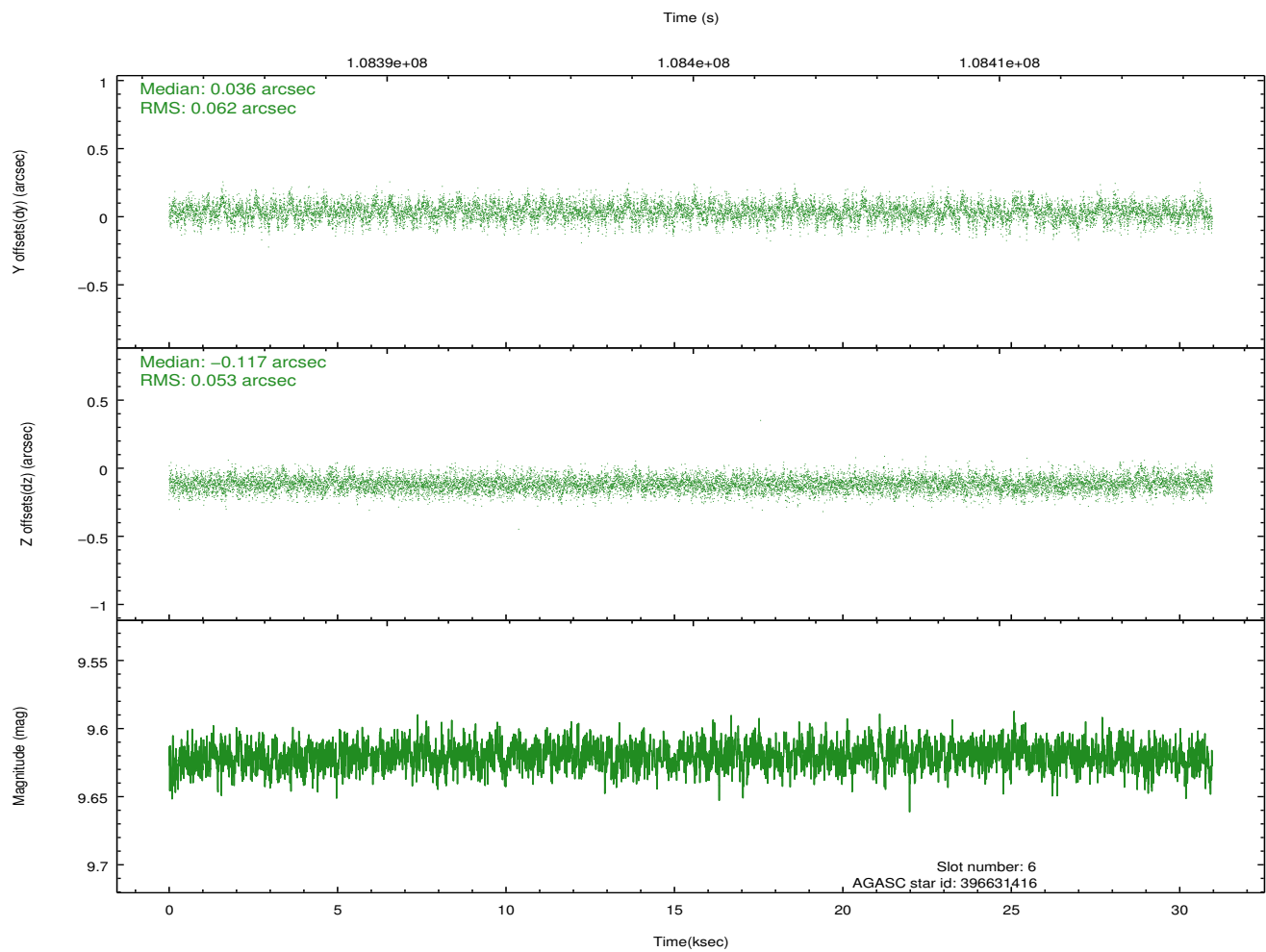
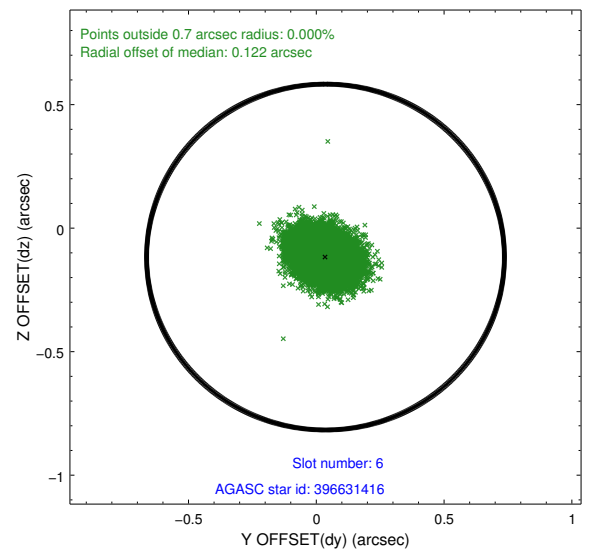
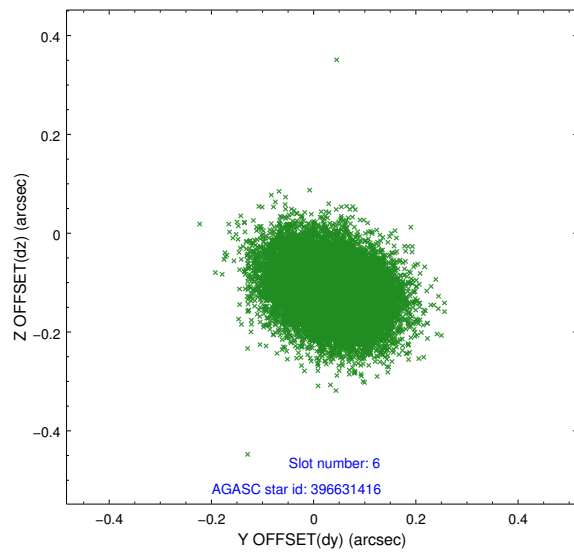
2.4.2 Slot 4



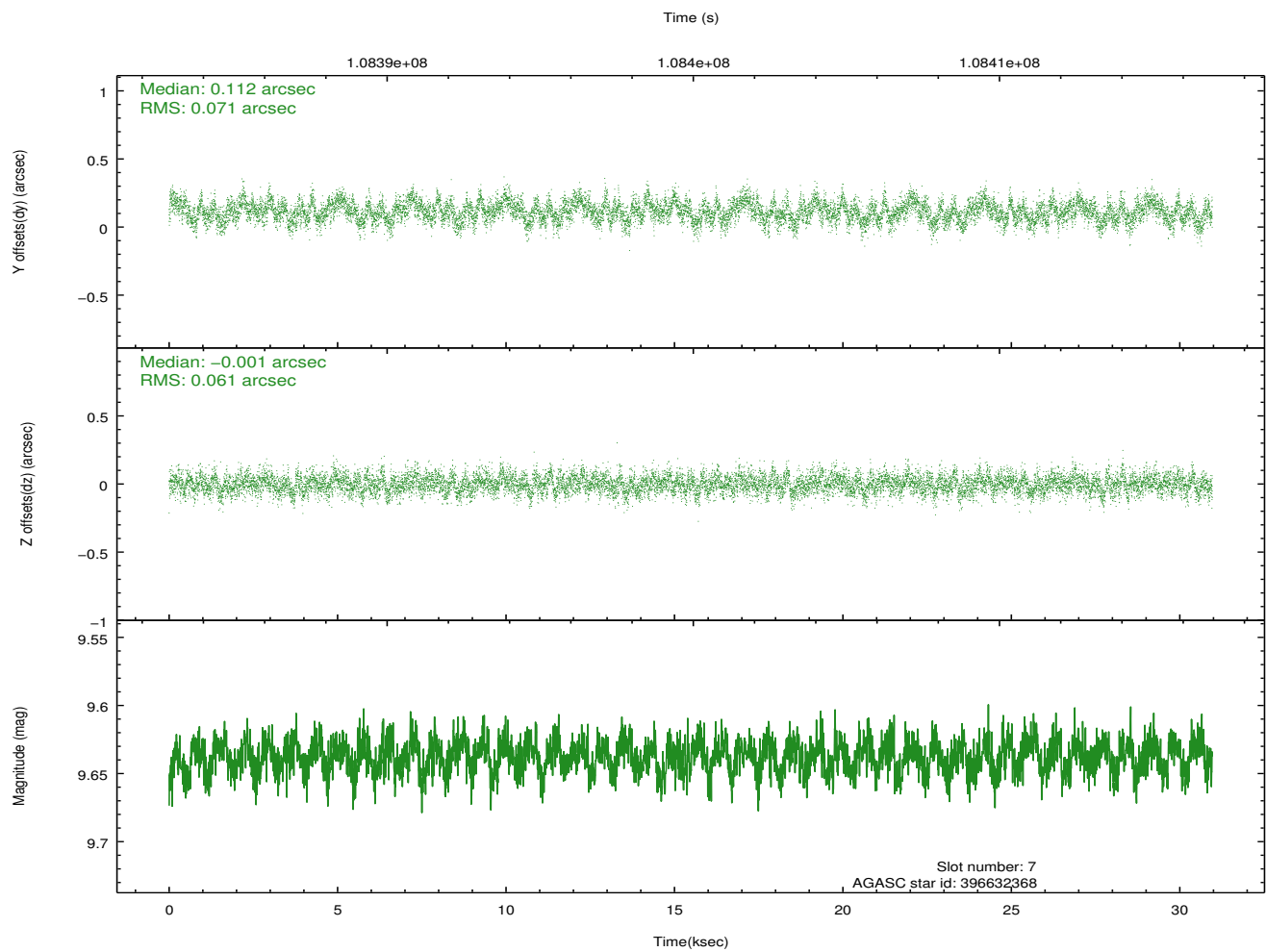
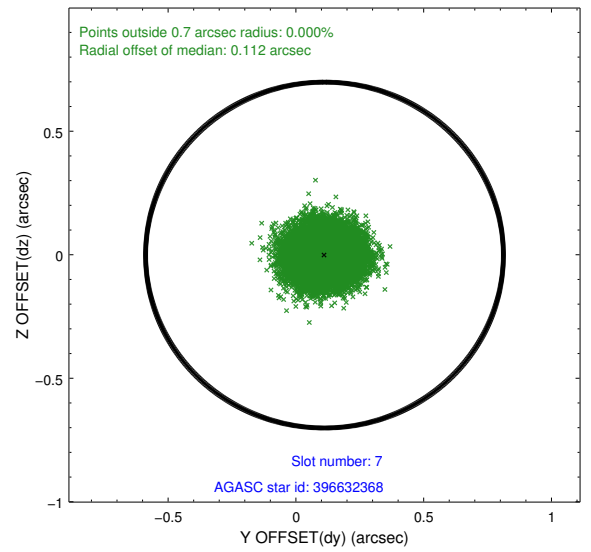
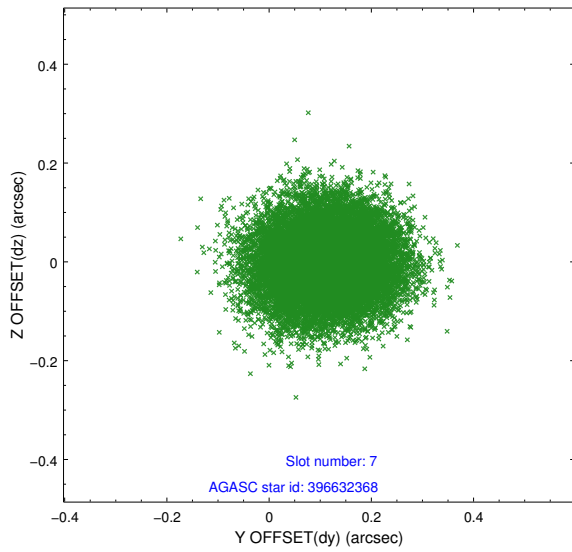
2.4.3 Slot 5



2.4.4 Slot 6

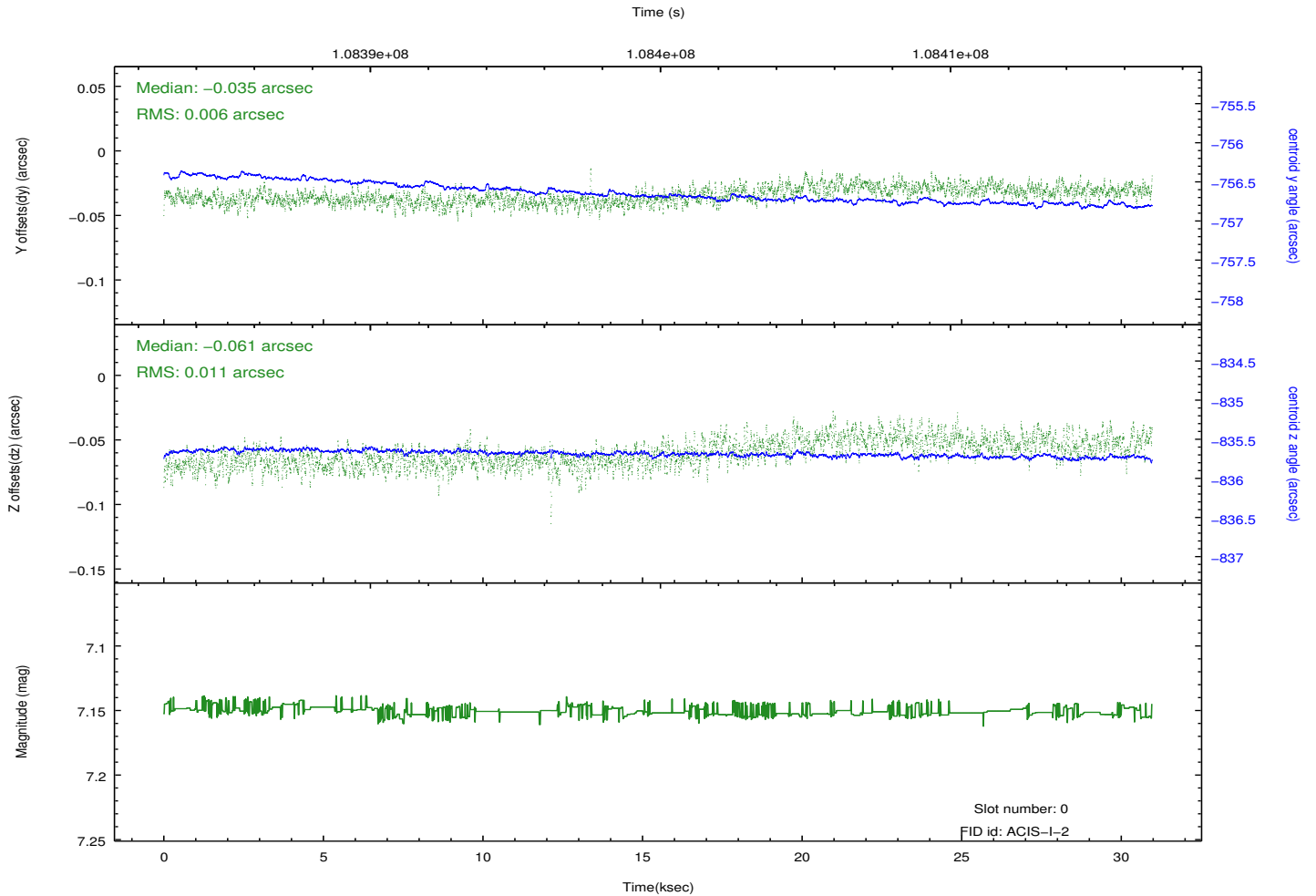
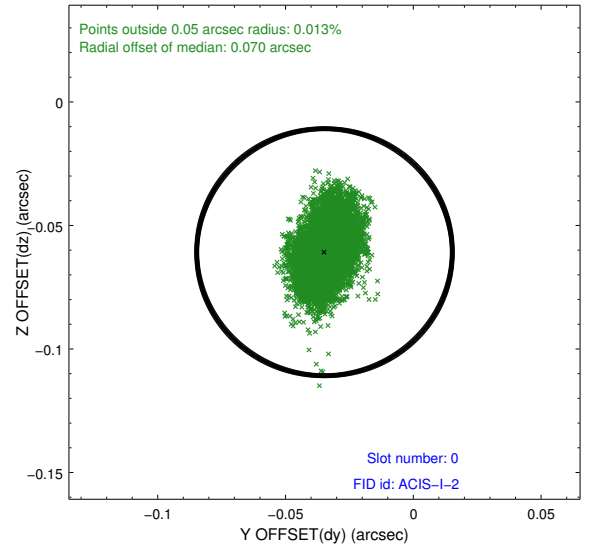
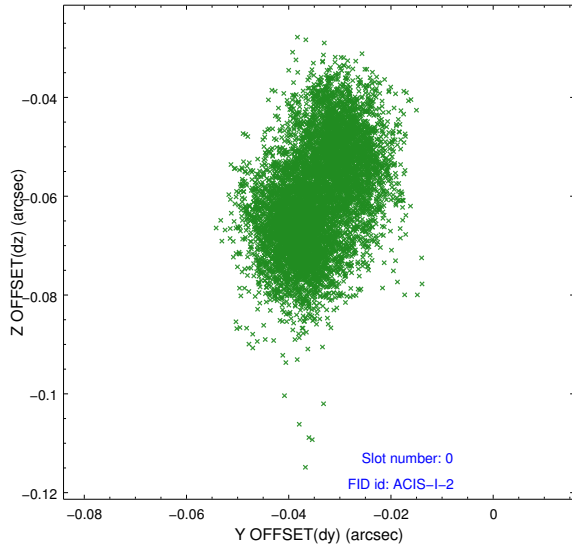


2.4.5 Slot 7

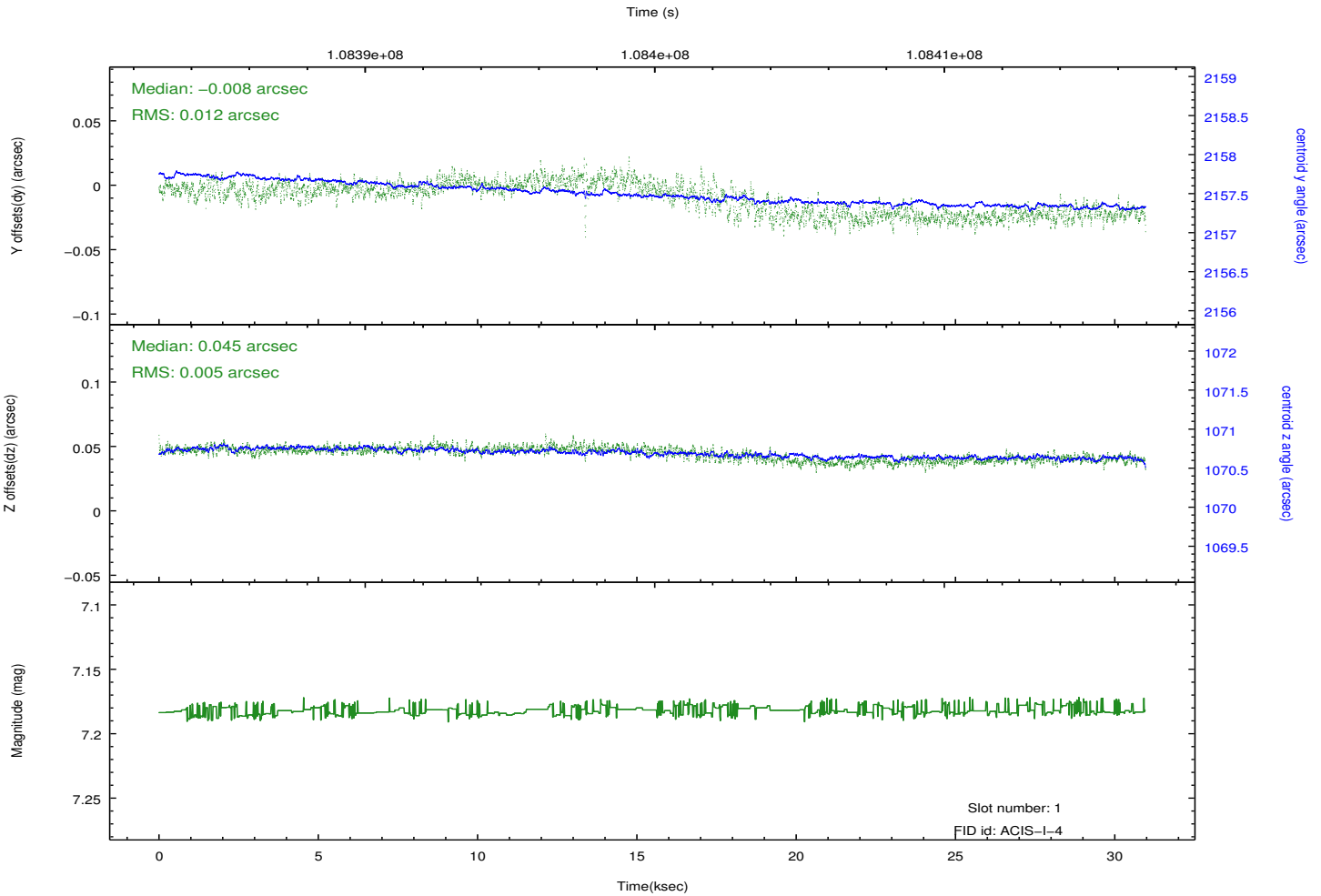
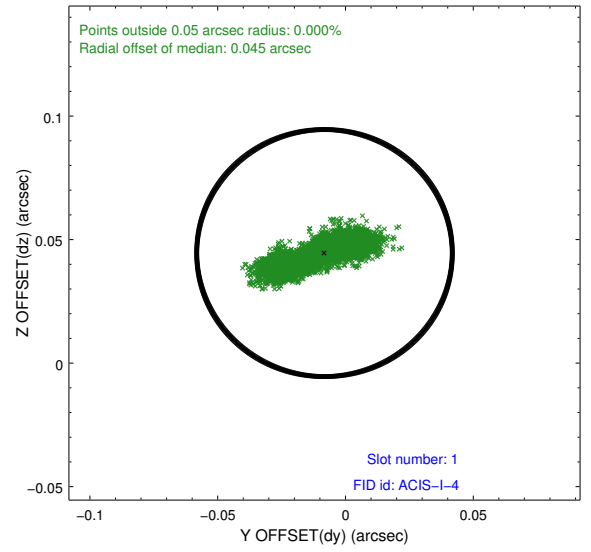
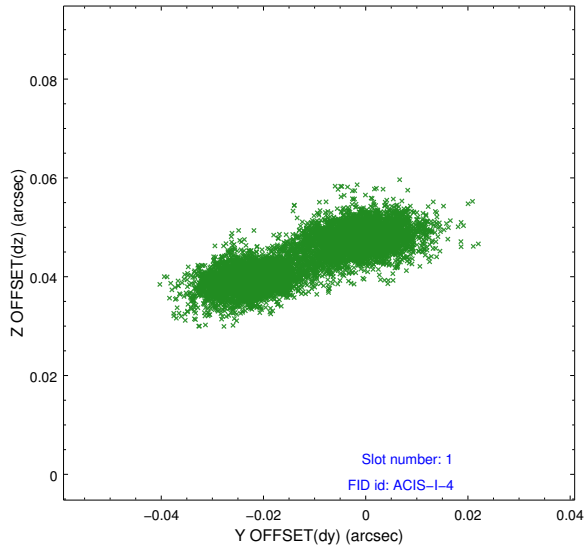


2.5 FID Slots

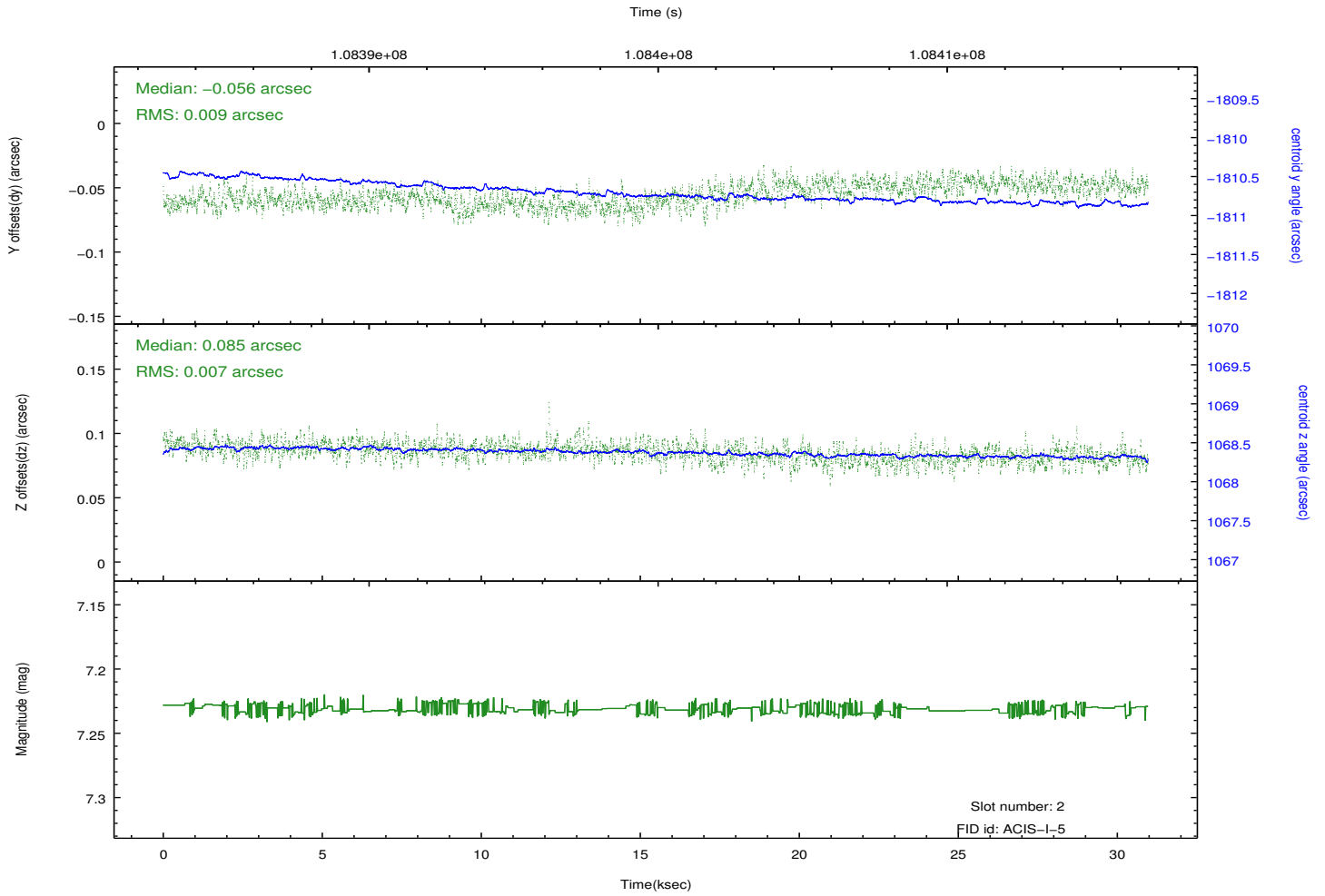
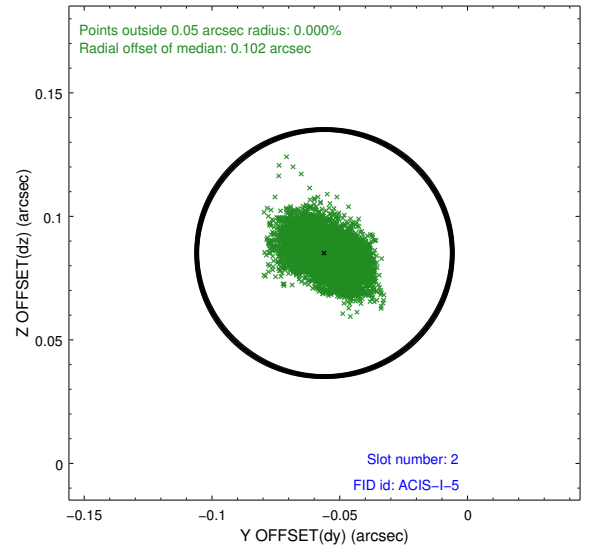
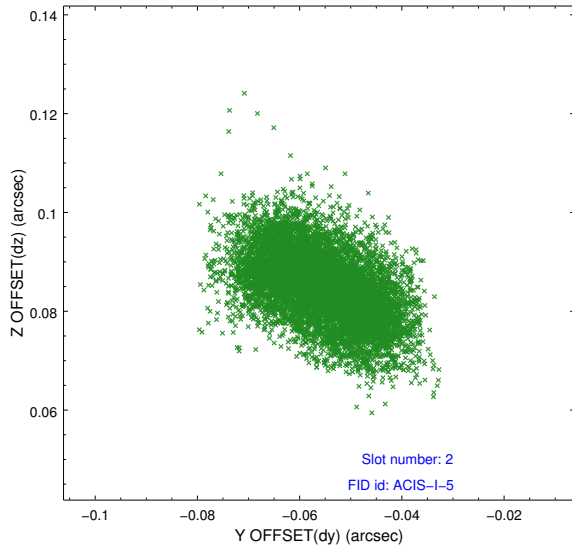
2.5.1 Slot 0



2.5.2 Slot 1



2.5.3 Slot 2



A Summary

A.1 Status

V&V Scientist	Jen Lauer
V&V Date (YYYY-MM-DD)	2012.09.20
V&V Edition	1
V&V Disposition and Status	OK
V&V Charge Time	30.387

A.2 Comments