

V&V Reference Report

L2 ASCDS Version : 8.4.5

Observation 2535 - L2 Version 3
Chandra X-Ray Center

L2 Processing Date : Oct 17 2012

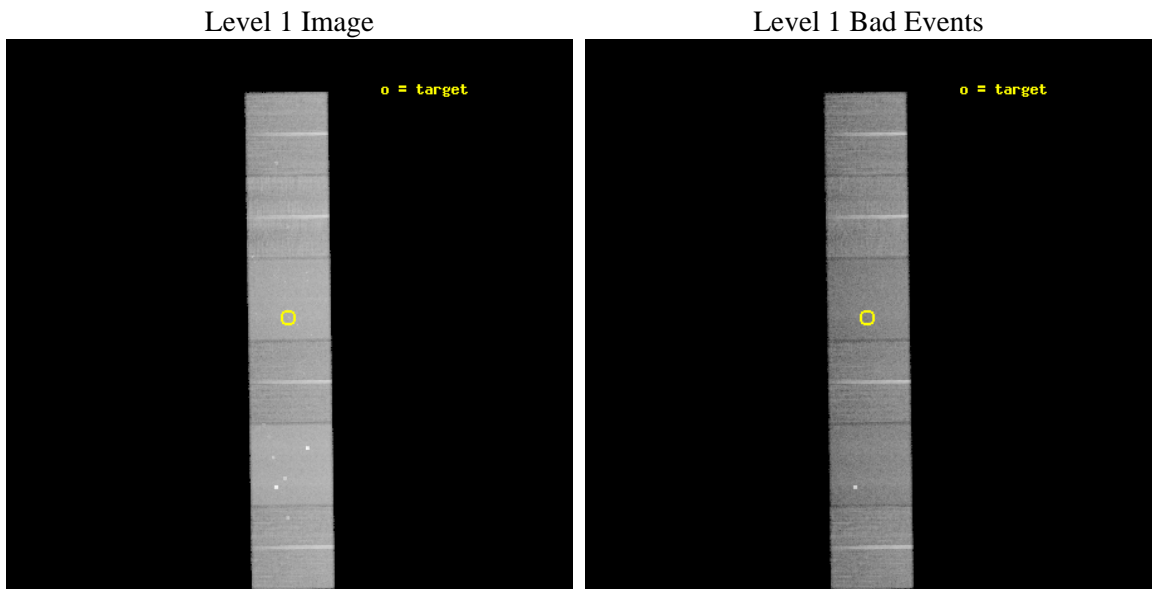
Contents

1	Front	2
2	OBI	3
2.1	OBI	3
2.1.1	Images	3
2.1.2	Bias	3
2.1.3	Parameters	4
2.1.4	Events	4
2.2	Compared Parameters	5
2.3	Aspect	6
2.4	Star Slots	9
2.4.1	Slot 3	9
2.4.2	Slot 4	10
2.4.3	Slot 5	11
2.4.4	Slot 6	12
2.4.5	Slot 7	13
2.5	FID Slots	14
2.5.1	Slot 0	14
2.5.2	Slot 1	15
2.5.3	Slot 2	16
A	Summary	17
A.1	Status	17
A.2	Comments	17

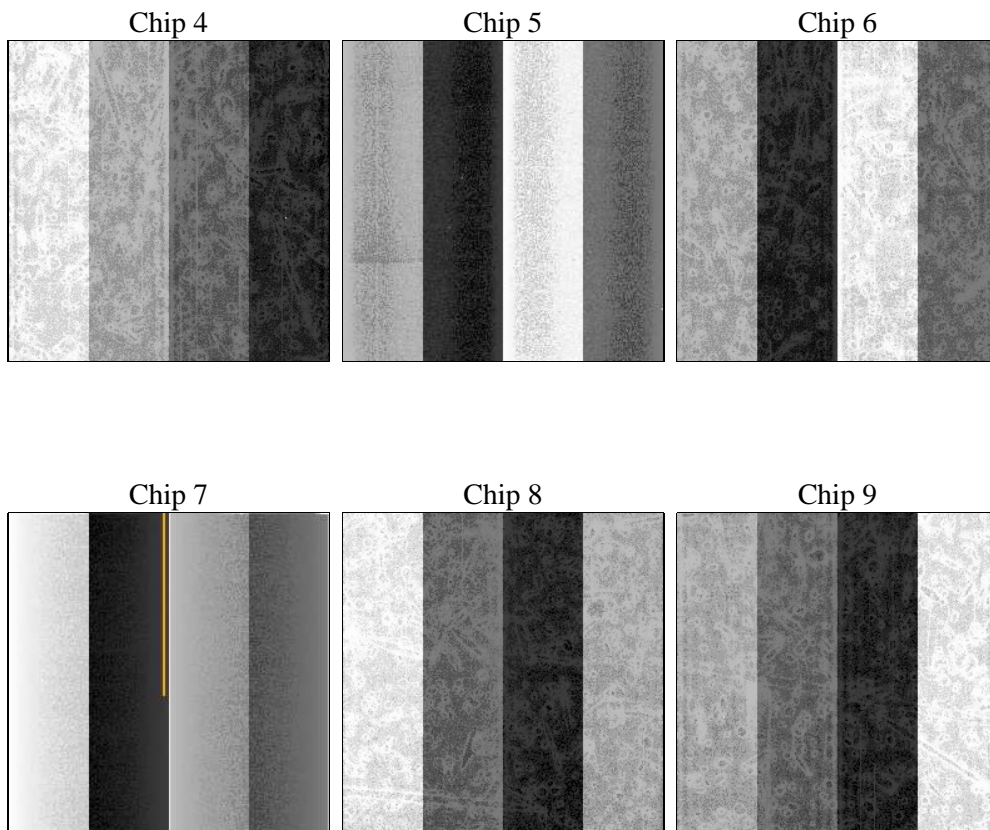
2 OBI

2.1 OBI

2.1.1 Images



2.1.2 Bias



2.1.3 Parameters

obi_num	0	Obi number	sched_exp_time	37800.000000	[s] Scheduled observation exposure time
ascdsver	8.4.5	Processing system revision	ontime	37785.599859238	Sum of GTIs [s]
caldbver	4.5.2	 	ontime4	37785.599859238	Sum of GTIs [s]
date	2012-10-17T12:09:06	Date and time of file creation	ontime5	37785.599859238	Sum of GTIs [s]
revision	3	Processing version of data	ontime6	37785.599859238	Sum of GTIs [s]
			ontime7	37785.599859238	Sum of GTIs [s]
			ontime8	37785.599859238	Sum of GTIs [s]
			ontime9	37785.599859238	Sum of GTIs [s]
			l1events	1715181	Number of level 1 events

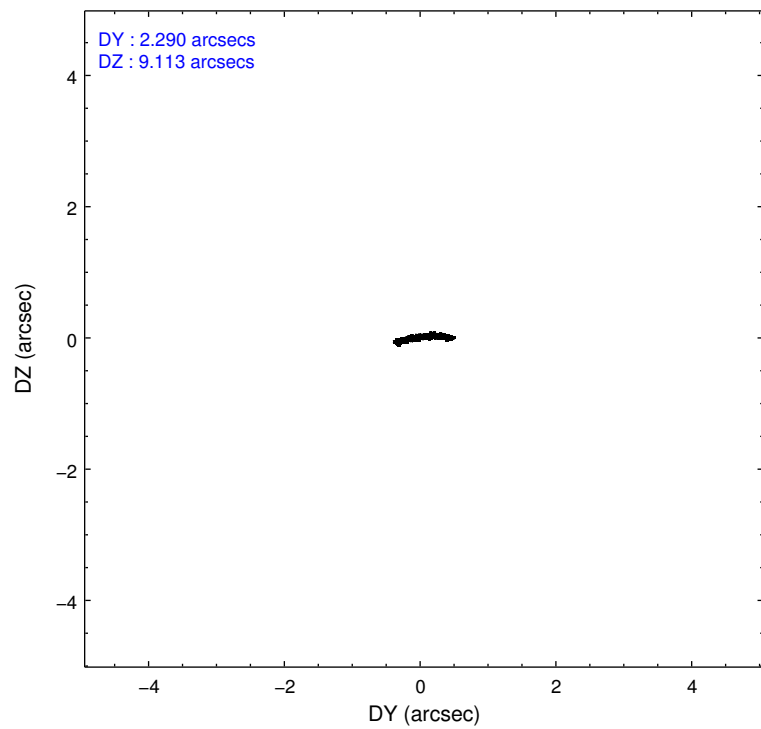
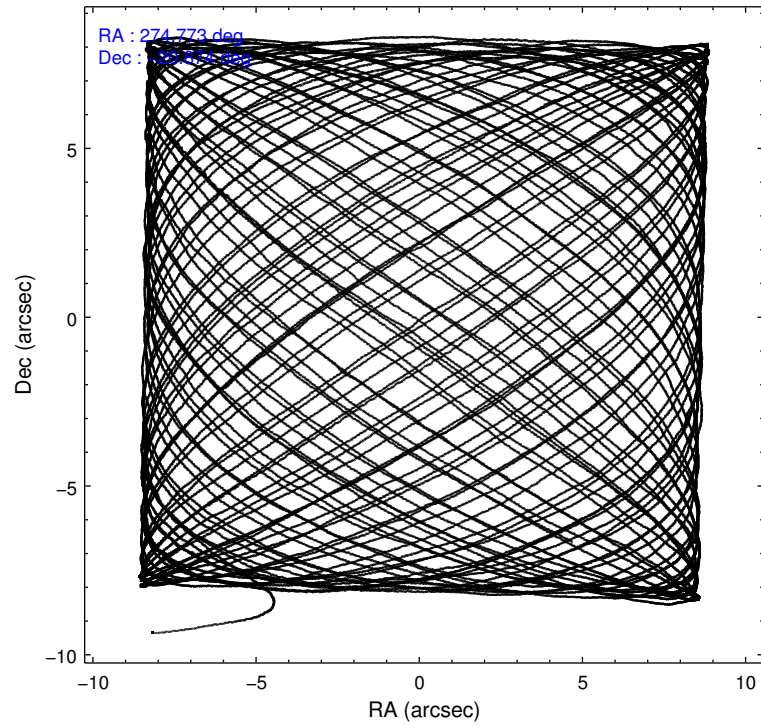
2.1.4 Events

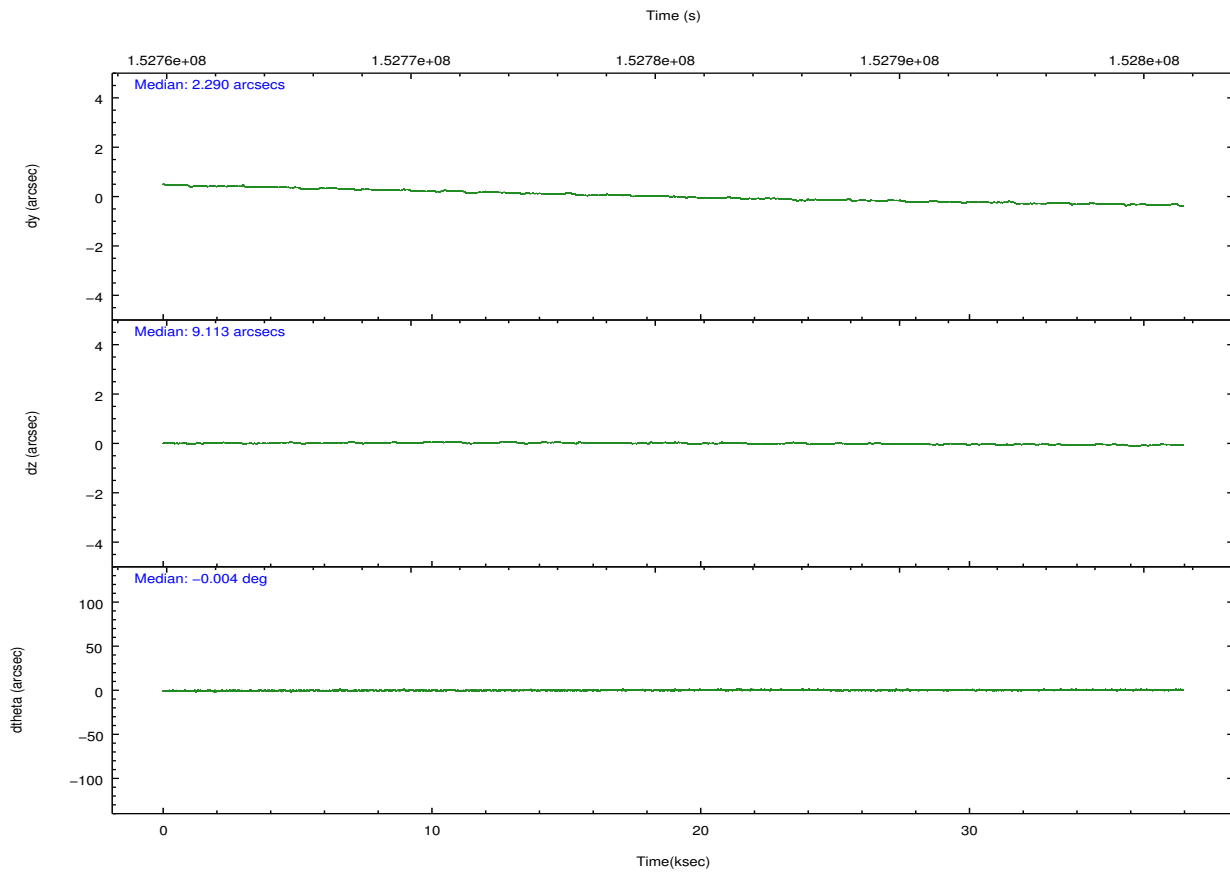
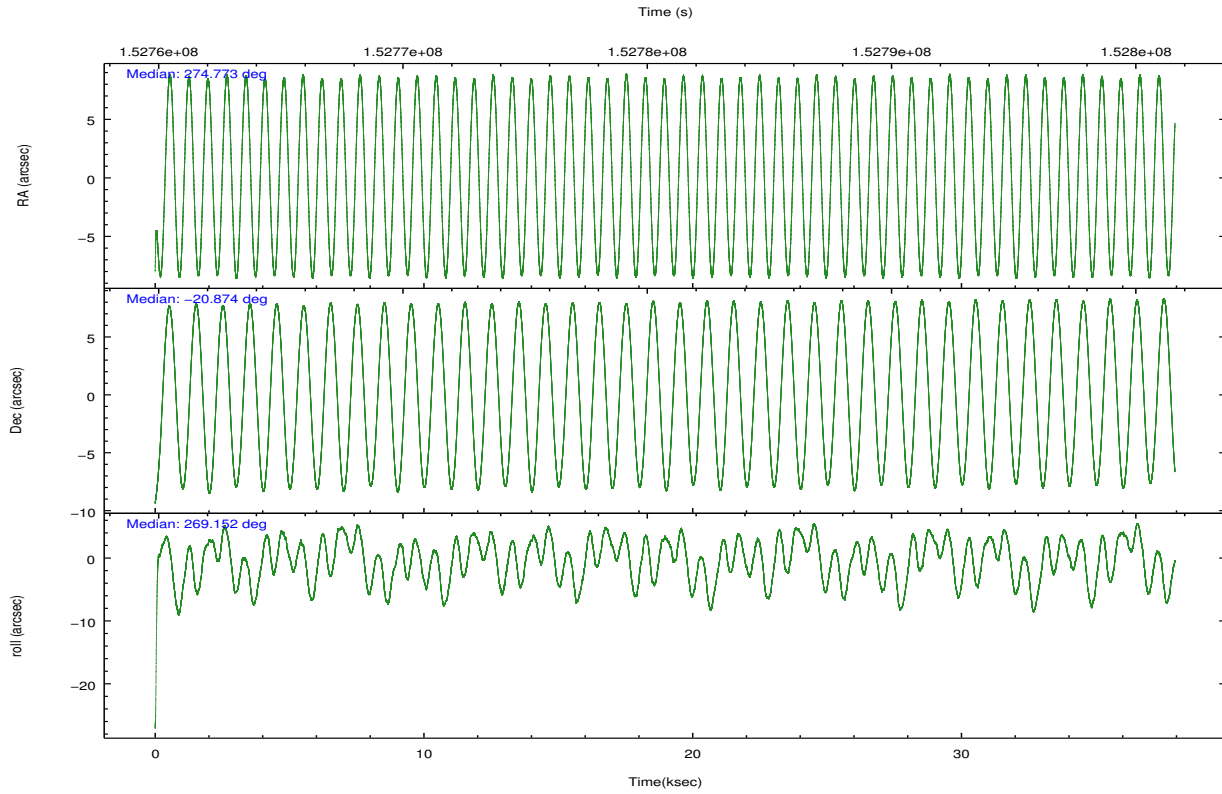
	ccd 4	ccd 5	ccd 6	ccd 7	ccd 8	ccd 9		ccd 4	ccd 5	ccd 6	ccd 7	ccd 8	ccd 9
level 1 events	263065	354543	237351	315615	307339	237268	grade 0 events	15719	23802	13853	13807	25877	13852
rejected events	229920	186870	205851	181094	232420	205677		5%	6%	5%	4%	8%	5%
rejected %	87%	52%	86%	57%	75%	86%	grade 1 events	269	362	122	333	229	128
								0%	0%	0%	0%	0%	0%
							grade 2 events	6659	47962	6387	26792	14605	6149
								2%	13%	2%	8%	4%	2%
							grade 3 events	3011	7744	2748	12213	9032	2920
								1%	2%	1%	3%	2%	1%
							grade 4 events	2993	6521	2748	11863	8260	2780
								1%	1%	1%	3%	2%	1%
							grade 5 events	9779	27000	10358	29317	13324	10959
								3%	7%	4%	9%	4%	4%
							grade 6 events	4767	81667	5766	69853	17147	5891
								1%	23%	2%	22%	5%	2%
							grade 7 events	219868	159485	195369	151437	218865	194589
								83%	44%	82%	47%	71%	82%

2.2 Compared Parameters

Parameter	Planned	Actual	Parameter	Planned	Actual
Instrument	ACIS	ACIS	Obspar format version number	7	7
Detector	ACIS-456789	ACIS-456789	Obspar file type	PREDICTED	ACTUAL
Grating	NONE	NONE	Obspar update status	NONE	UPDATED
Data mode	FAINT	FAINT	Number of optional ACIS chips dropped	0	0
Observation mode	POINTING	POINTING	On-chip summing requested	N	N
[deg] Pointing RA	274.758756	274.7732688761403	Subarray requested	NONE	NONE
[deg] Pointing Dec	-20.850732	-20.87433937943076	Alternating exposures requested	N	N
[deg] Pointing Roll	268.994134	269.155914634999	[s] Primary exposure time	0.000000	3.2
[mm] SIM focus pos	-0.684267	-0.6828225247311905			
[mm] SIM defocus	0	0.001444936568705701			
[mm] SIM translation stage pos	-190.132523	-190.1425803651734			
[mm] SIM translation stage offset	0	0.01005778216563158			
[s] Observation start time (MET)	152761902.184000	152760927.23363			
Observation start date	2002-11-04T01:50:38	2002-11-04T01:35:27			
[s] Observation end time (MET)	152799702.184000	152800168.84777			
Observation end date	2002-11-04T12:20:38	2002-11-04T12:29:28			
Read mode	TIMED	TIMED			

2.3 Aspect





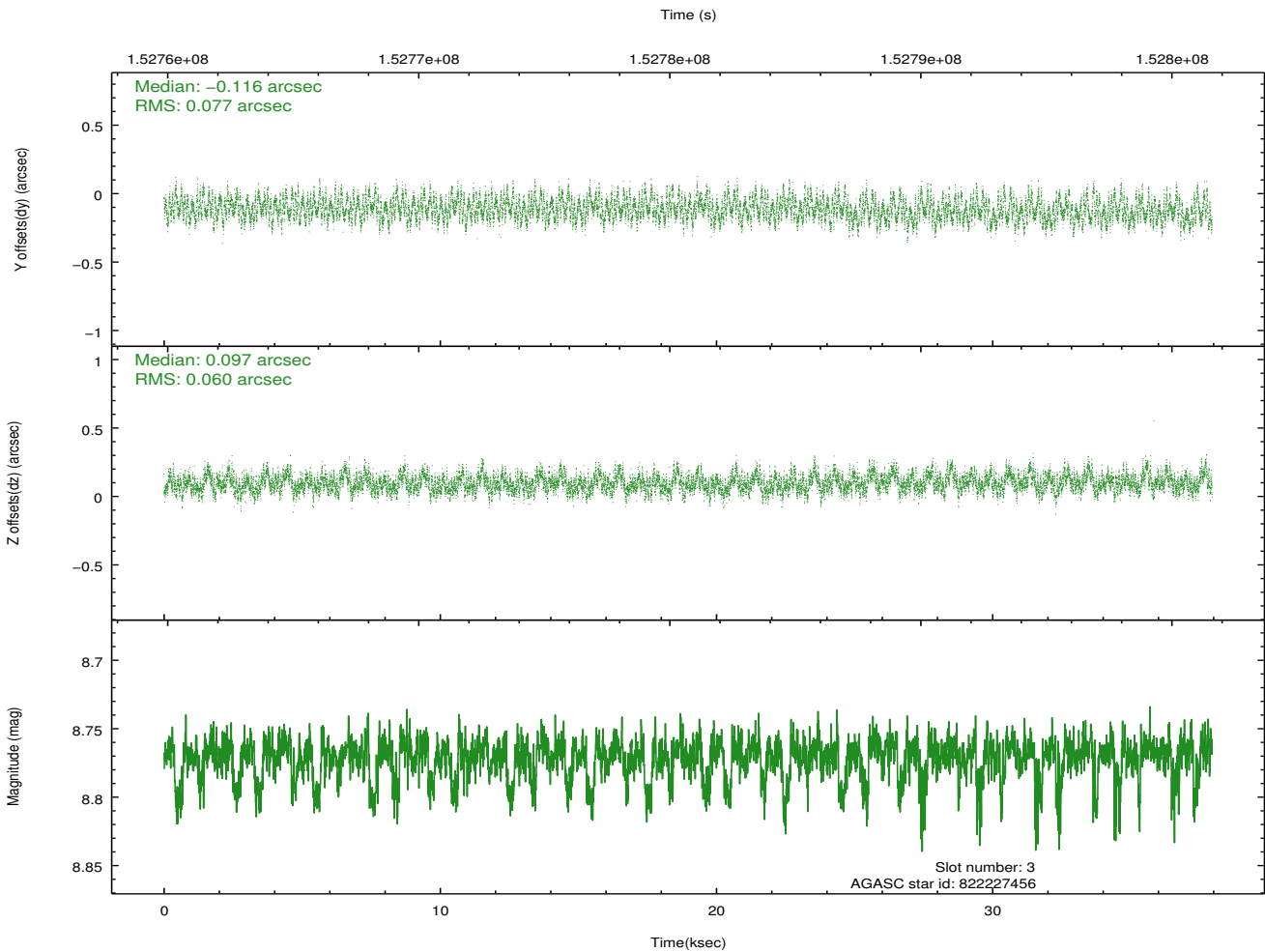
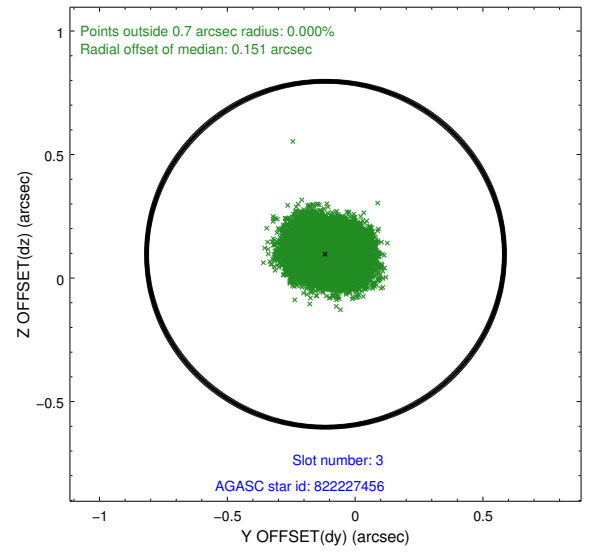
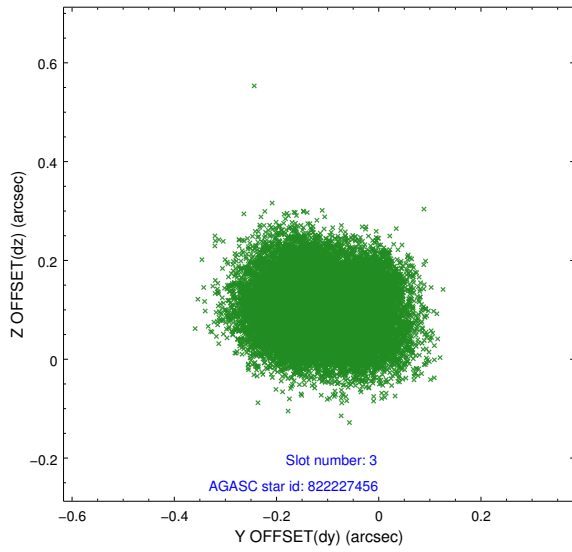
Slot Statistics

slot	status	id	mag	n_pts	med_dy	med_dz	dr1	dr2	ra	dec	mean_y	mean_z
0	FID	ACIS-S-2	7.10	9252	-0.029	-0.004	0.012	0.020	0.000000	0.000000	-754.96	-1730.29
1	FID	ACIS-S-4	7.20	9254	-0.011	0.014	0.016	0.027	0.000000	0.000000	2158.32	178.20
2	FID	ACIS-S-5	7.23	9255	0.006	-0.002	0.010	0.017	0.000000	0.000000	-1807.74	171.87
3	GUIDE	822227456	8.77	18503	-0.116	0.097	0.106	0.165	275.283448	-20.288373	-2051.74	1736.79
4	GUIDE	822225848	9.26	18496	0.049	-0.087	0.099	0.158	274.398918	-20.593129	-903.69	-1227.99
5	GUIDE	822220528	7.86	18501	-0.178	0.052	0.058	0.095	275.135629	-20.216289	-2303.94	1233.51
6	GUIDE	822749968	9.33	18492	0.116	-0.077	0.078	0.127	274.811645	-21.310959	1654.33	207.35
7	GUIDE	822751696	9.57	18497	0.124	0.015	0.095	0.153	275.040862	-21.506818	2347.07	987.34

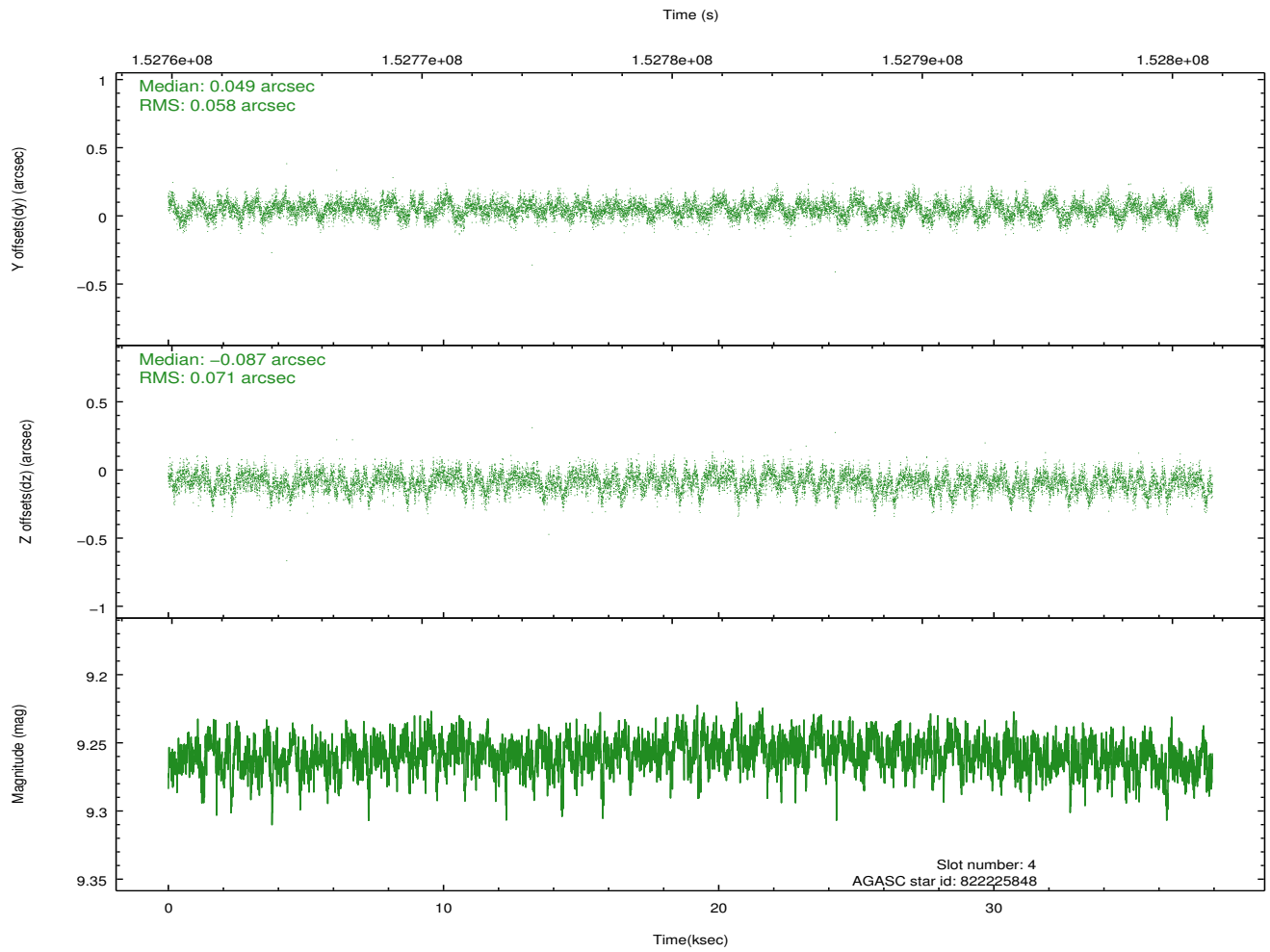
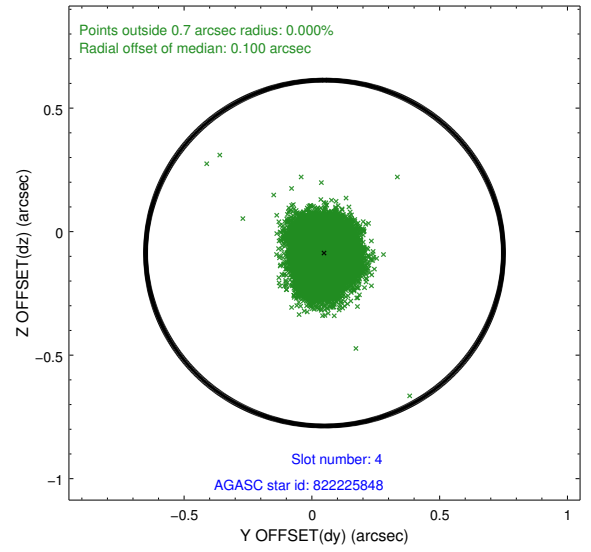
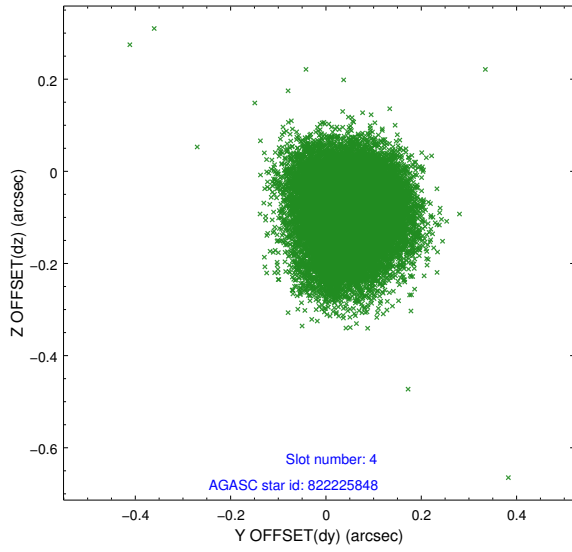
∞

2.4 Star Slots

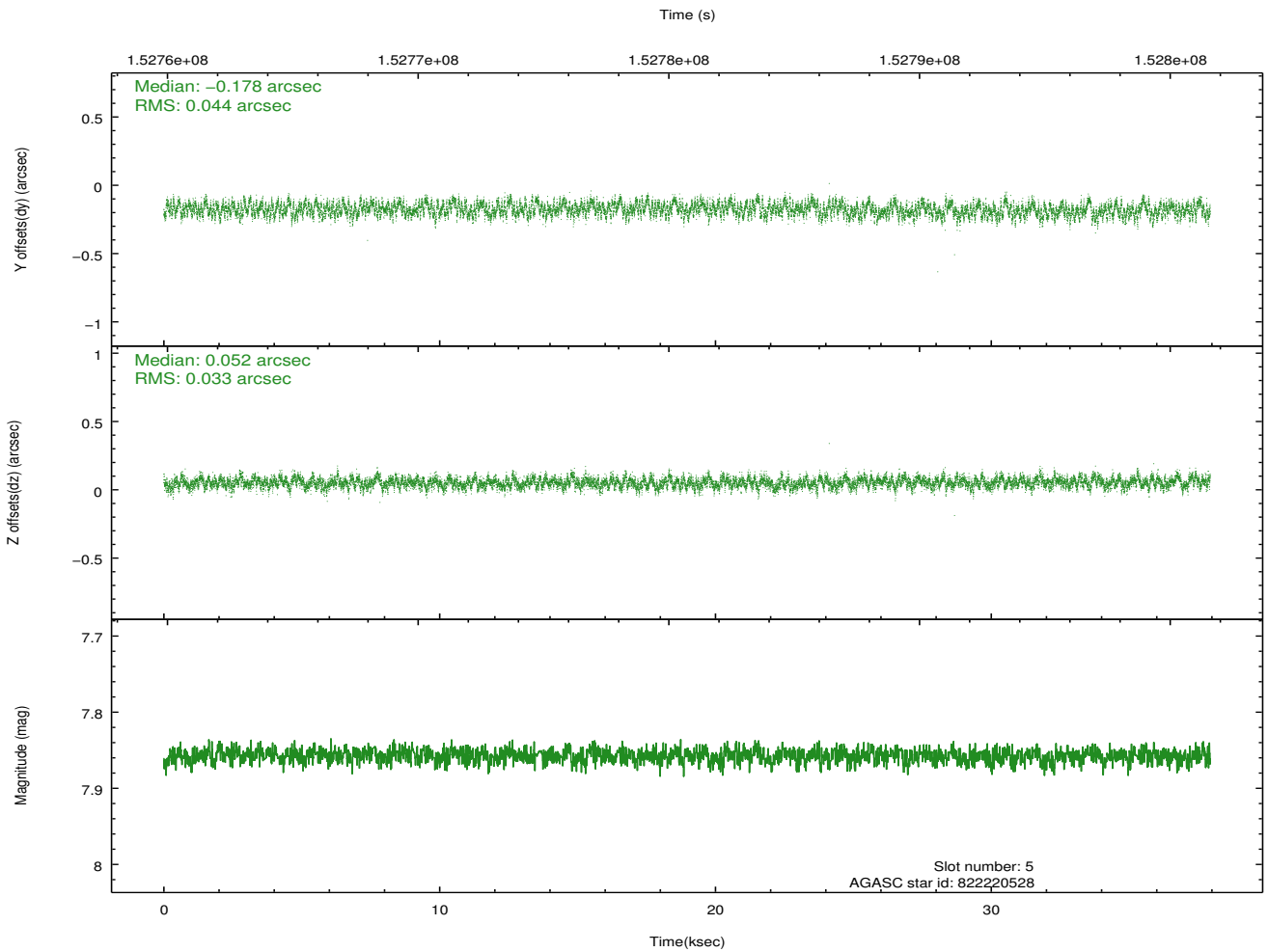
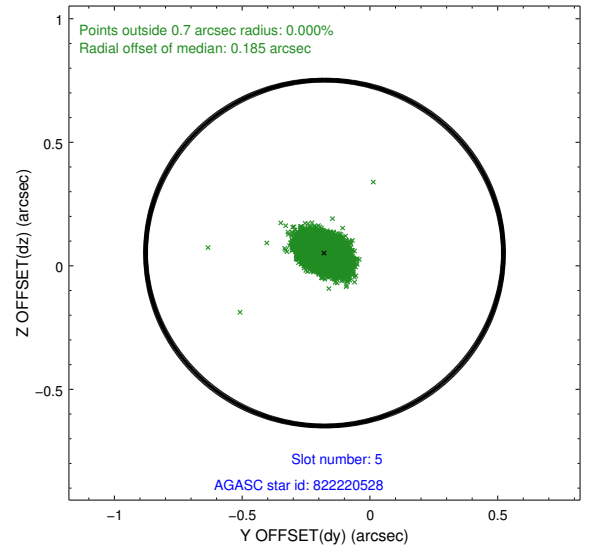
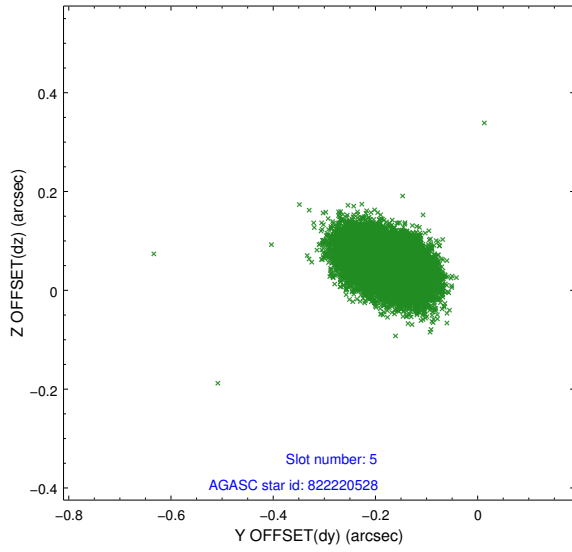
2.4.1 Slot 3



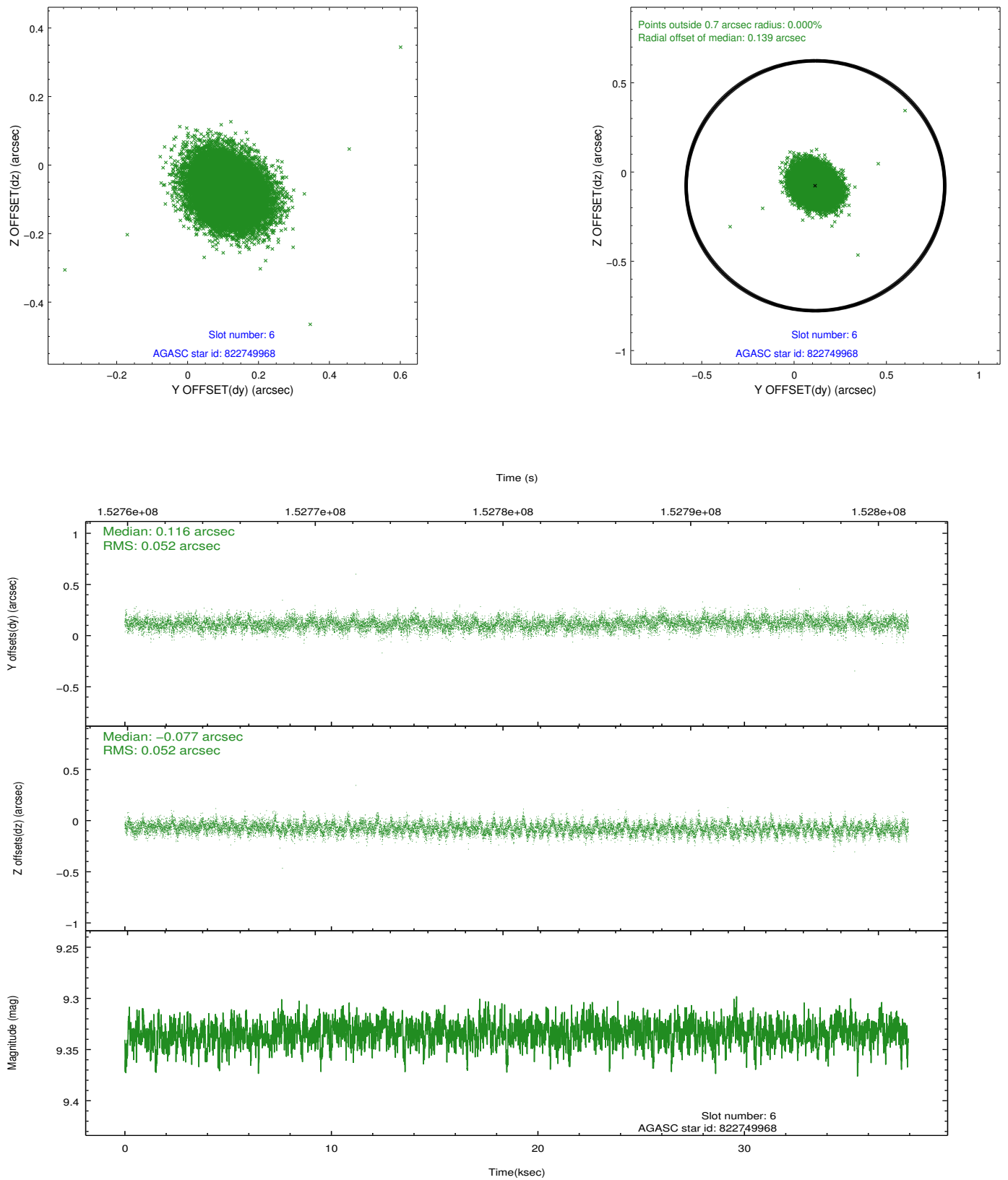
2.4.2 Slot 4



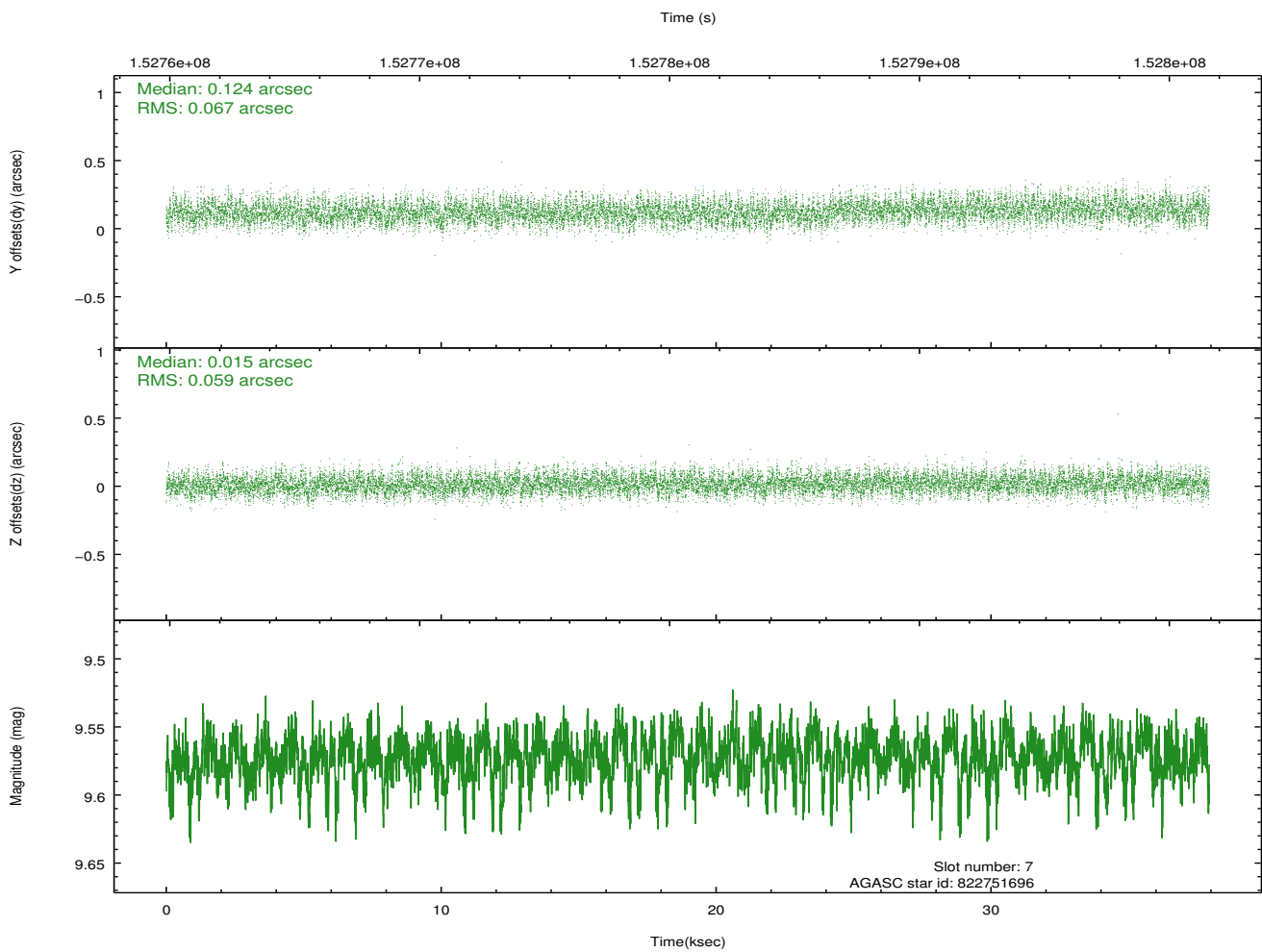
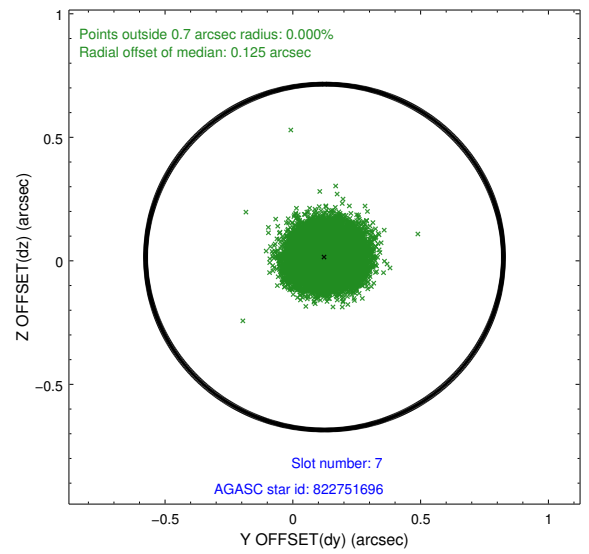
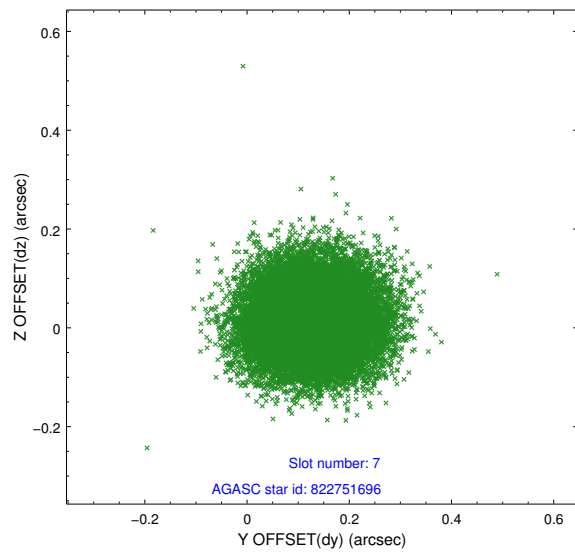
2.4.3 Slot 5



2.4.4 Slot 6

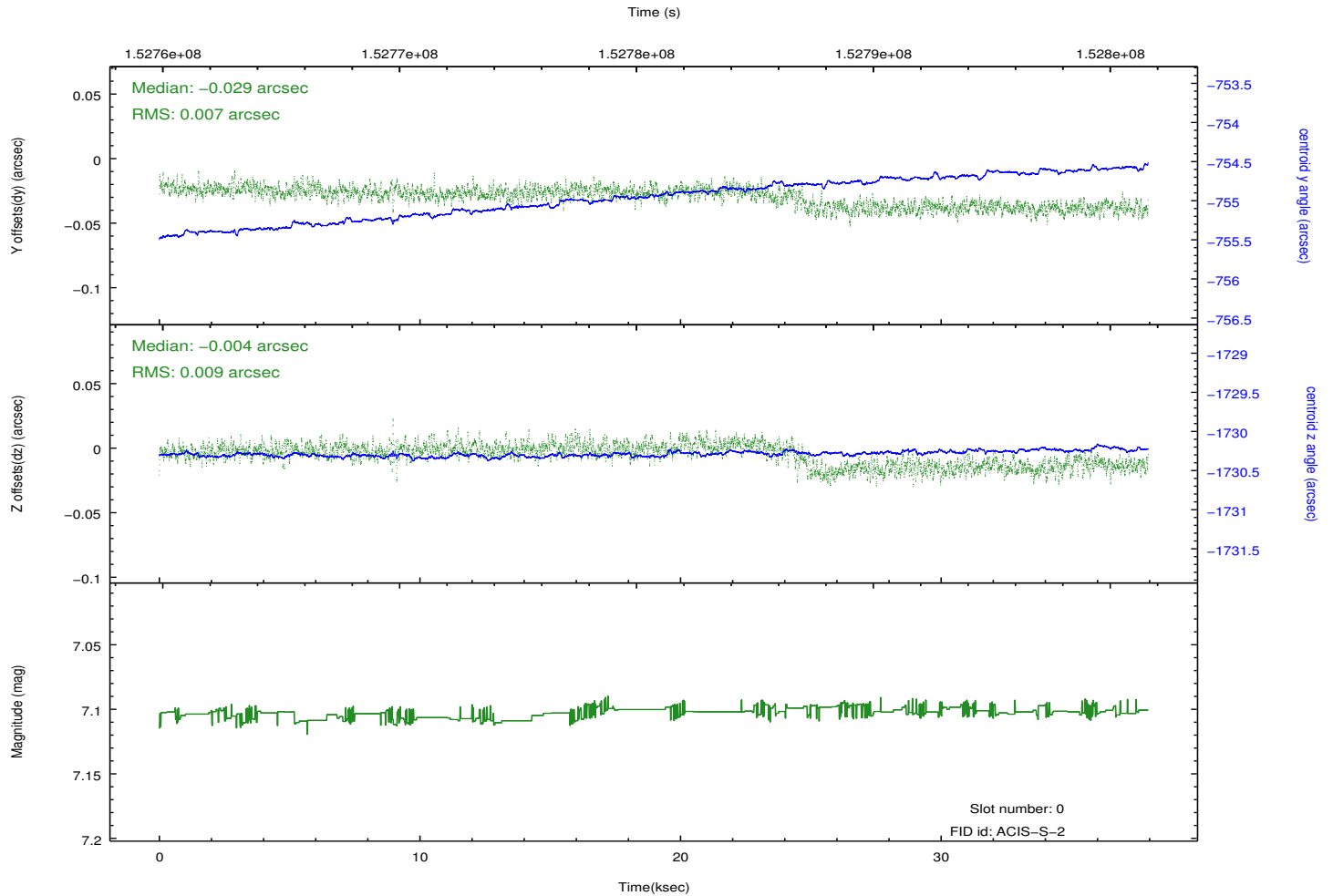
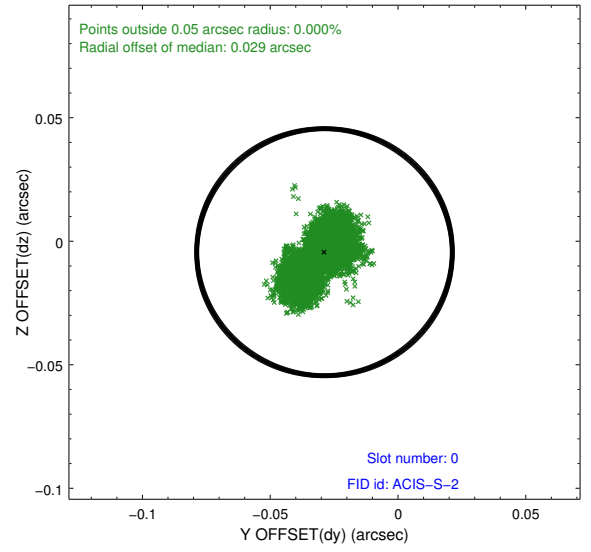
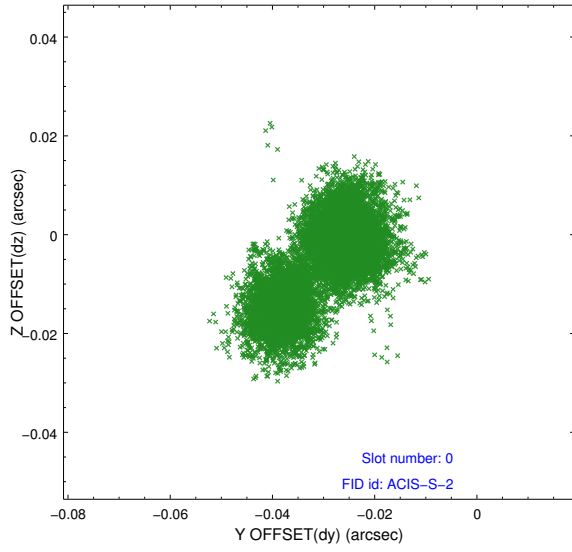


2.4.5 Slot 7

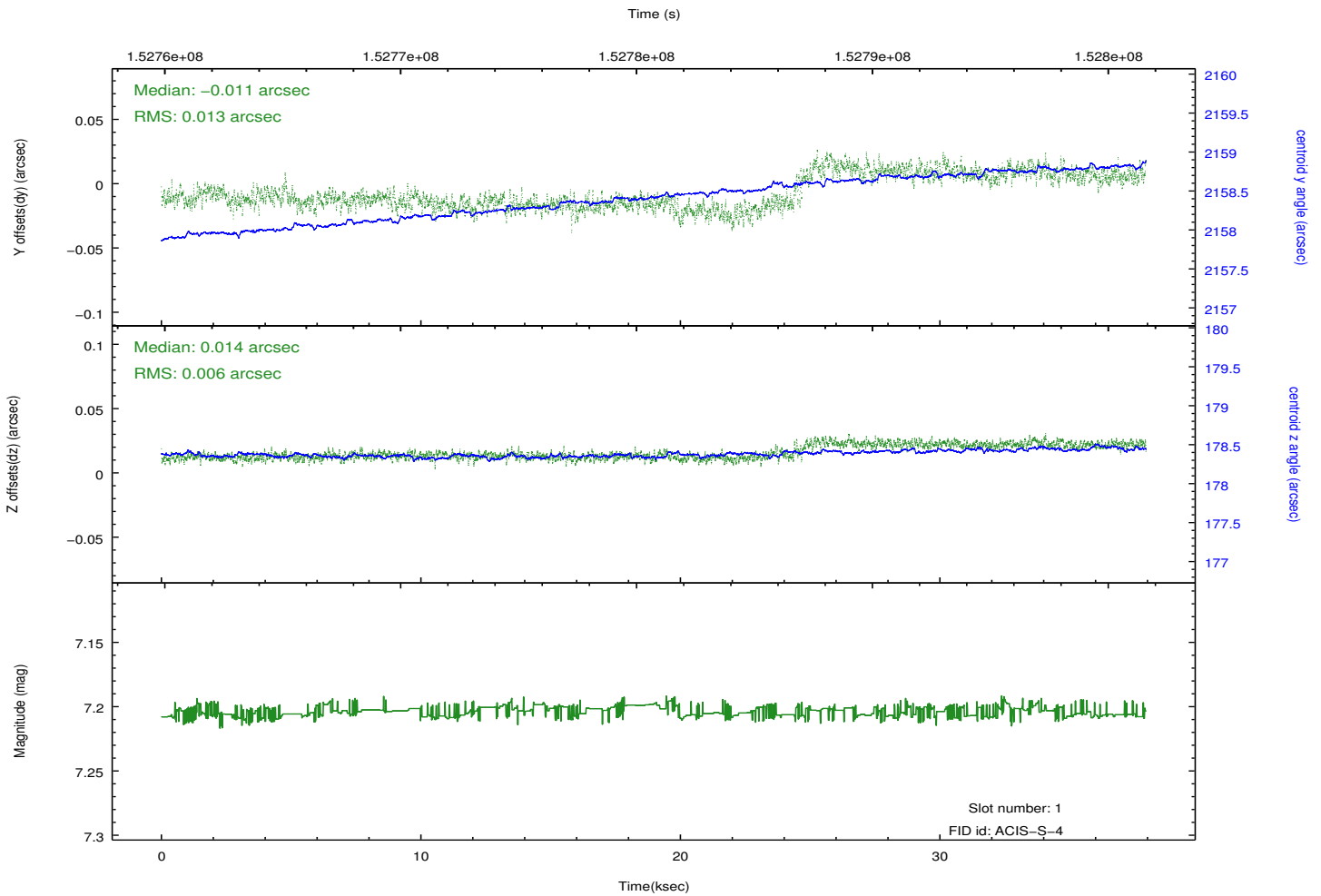
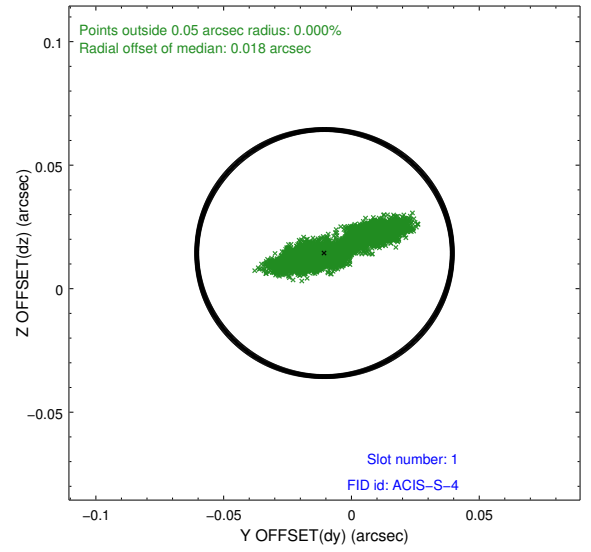
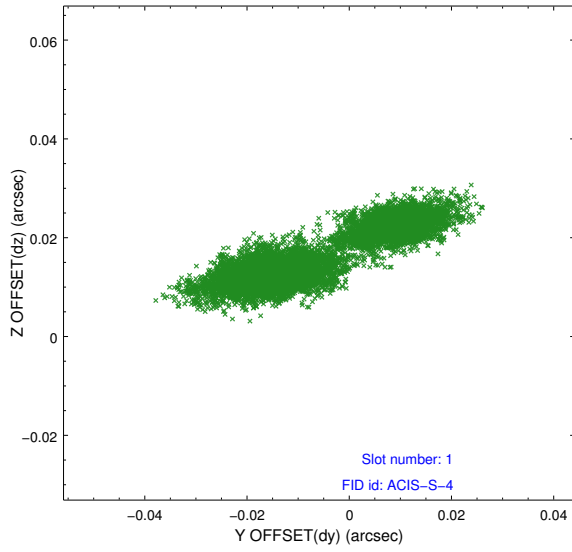


2.5 FID Slots

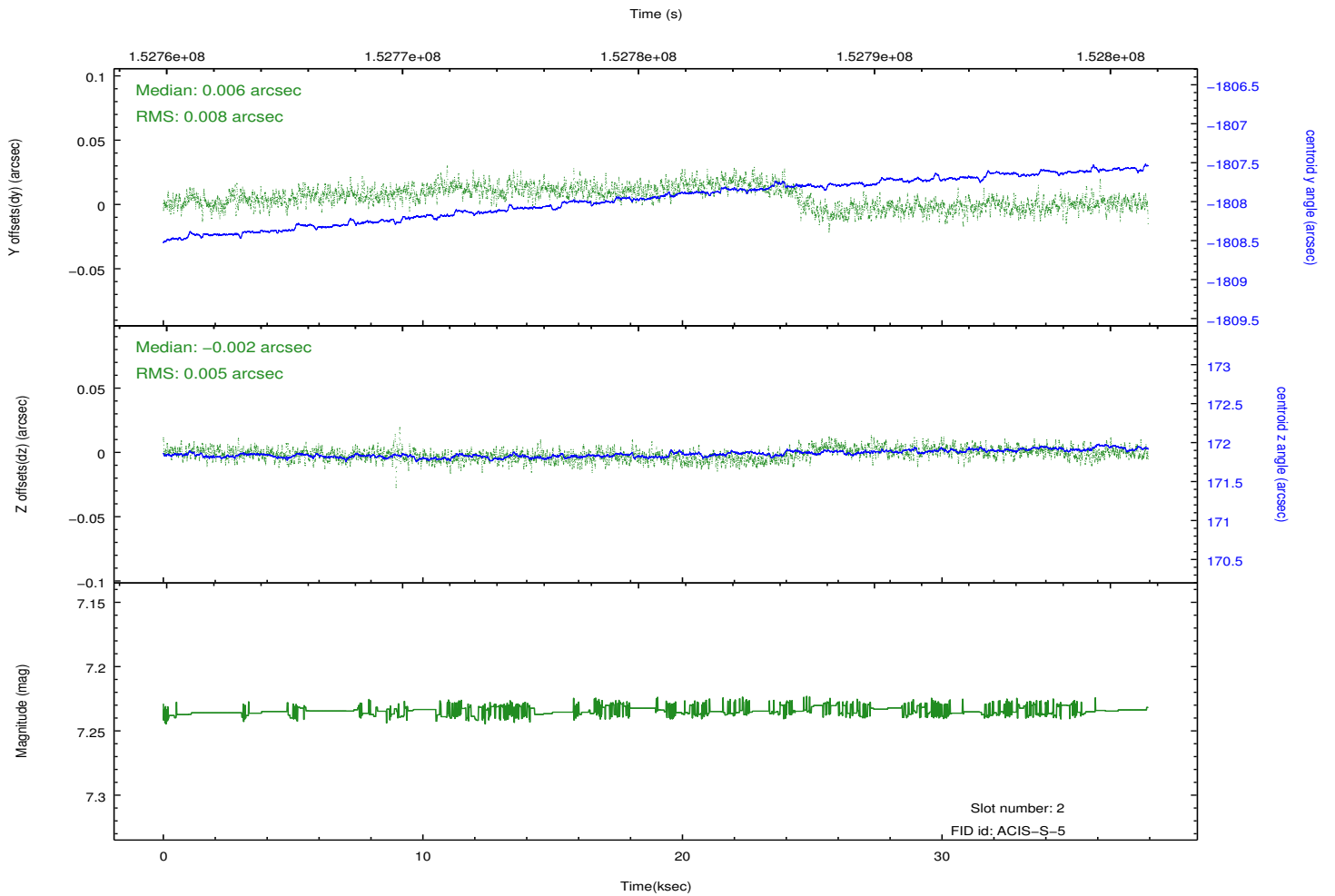
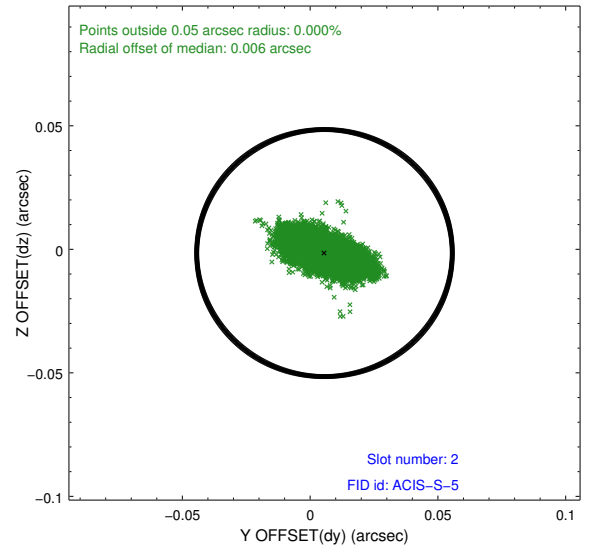
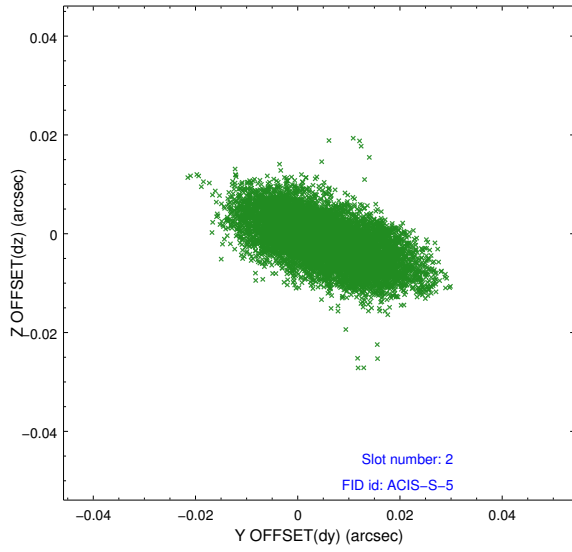
2.5.1 Slot 0



2.5.2 Slot 1



2.5.3 Slot 2



A Summary

A.1 Status

V&V Scientist	Jen Lauer
V&V Date (YYYY-MM-DD)	2012.10.26
V&V Edition	1
V&V Disposition and Status	OK
V&V Charge Time	37.788

A.2 Comments