

V&V Reference Report

L2 ASCDS Version : 8.4.5

Observation 2565 - L2 Version 3
Chandra X-Ray Center

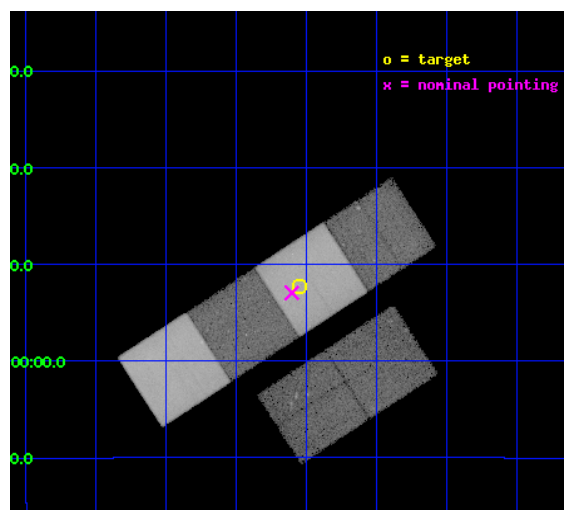
L2 Processing Date : Oct 17 2012

Contents

1	Front	2
2	OBI	3
2.1	OBI	3
2.1.1	Images	3
2.1.2	Bias	3
2.1.3	Parameters	4
2.1.4	Events	4
2.2	Compared Parameters	5
2.3	Aspect	6
2.4	Star Slots	9
2.4.1	Slot 3	9
2.4.2	Slot 4	10
2.4.3	Slot 5	11
2.4.4	Slot 6	12
2.4.5	Slot 7	13
2.5	FID Slots	14
2.5.1	Slot 0	14
2.5.2	Slot 1	15
2.5.3	Slot 2	16
A	Summary	17
A.1	Status	17
A.2	Comments	17

1 Front

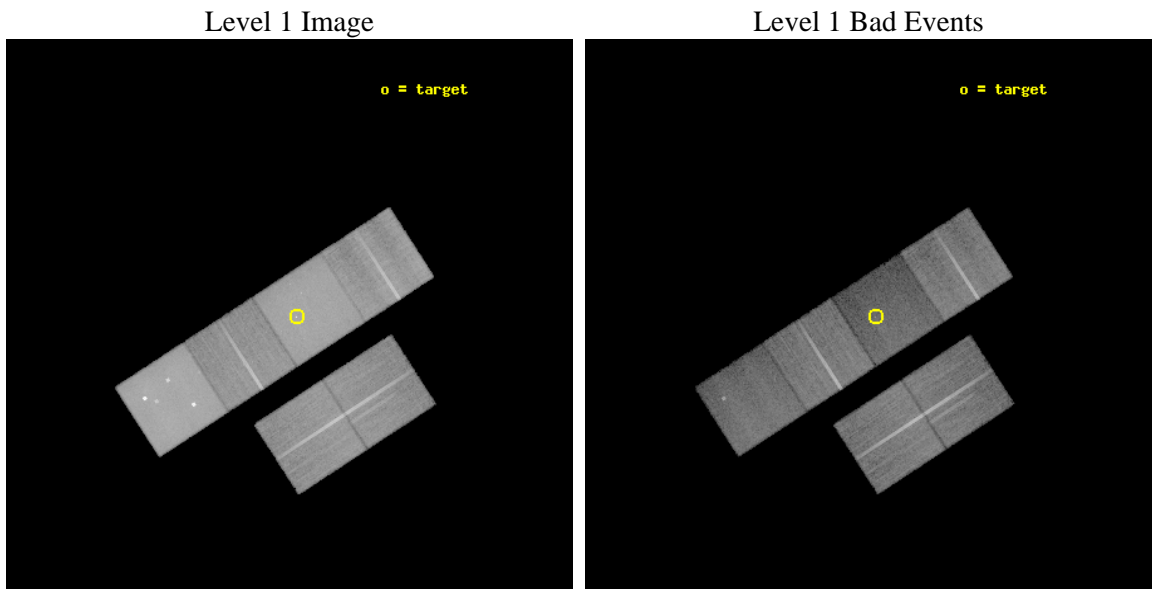
seq_num	200173	Sequence number
obs_id	2565	Observation id
title	A CHANDRA STUDY OF THE PLANETARY NEBULA NGC 246	Proposal title
observer	DR. ANDREW SZENTGYORGYI	Principal investigator
object	NGC 246	Source name
dtcycle	0	
cycle	P	events from which exps? Prim/Second/Both
ra_targ	11.7625	Observer's specified target RA [deg]
dec_targ	-11.872222	Observer's specified target Dec [deg]
ra_nom	11.775711687102	Nominal RA [deg]
dec_nom	-11.882680326636	Nominal Dec [deg]
roll_nom	326.99404313592	Nominal Roll [deg]
revision	3	Processing version of data
ontime	40943.999847472	Sum of GTIs [s]
livetime	40425.542267886	Livetime [s]
ontime2	40937.517886907	Sum of GTIs [s]
ontime3	40940.758847266	Sum of GTIs [s]
ontime5	40943.999847472	Sum of GTIs [s]
ontime6	40937.517886907	Sum of GTIs [s]
ontime7	40943.999847472	Sum of GTIs [s]
ontime8	40937.517906904	Sum of GTIs [s]
l2events	607273	Number of level 2 events



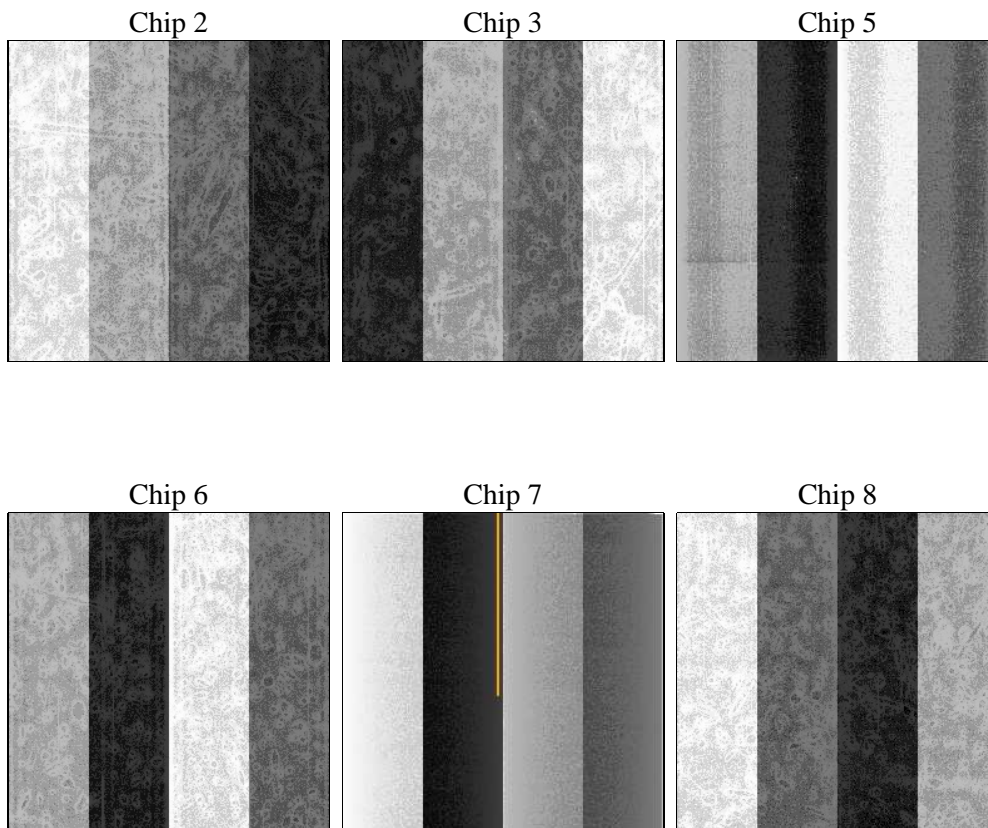
2 OBI

2.1 OBI

2.1.1 Images



2.1.2 Bias



2.1.3 Parameters

obi_num	0	Obi number	sched_exp_time	40981.612000	[s] Scheduled observation exposure time
ascdsver	8.4.5	Processing system revision	ontime	40943.999847472	Sum of GTIs [s]
caldbver	4.5.2	 	ontime2	40937.517886907	Sum of GTIs [s]
date	2012-10-17T00:33:49	Date and time of file creation	ontime3	40940.758847266	Sum of GTIs [s]
revision	3	Processing version of data	ontime5	40943.999847472	Sum of GTIs [s]
			ontime6	40937.517886907	Sum of GTIs [s]
			ontime7	40943.999847472	Sum of GTIs [s]
			ontime8	40937.517906904	Sum of GTIs [s]
			l1events	1630925	Number of level 1 events

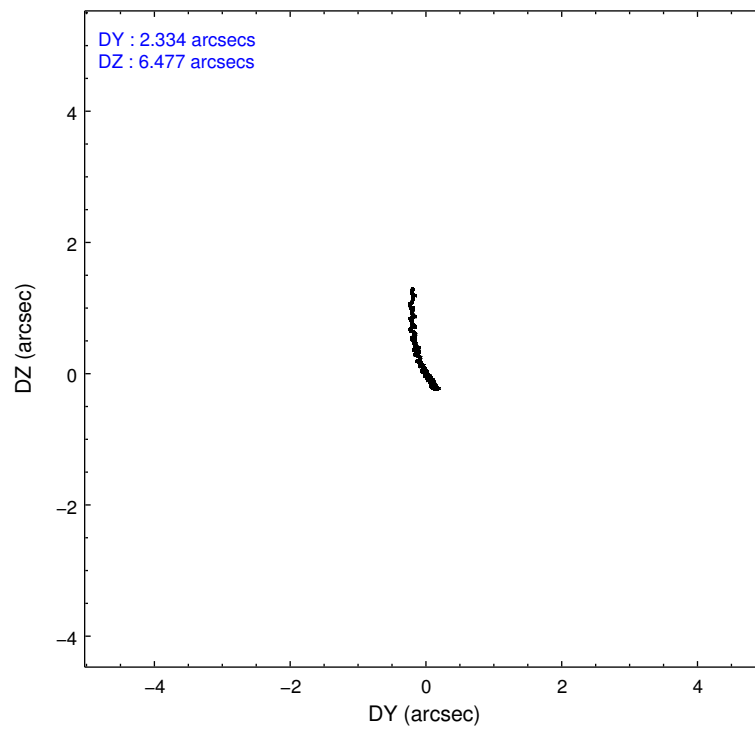
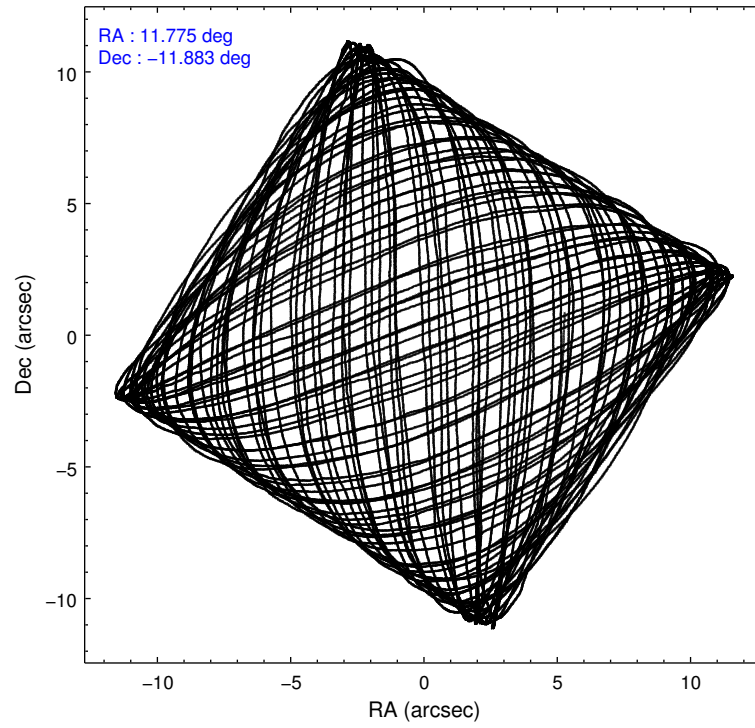
2.1.4 Events

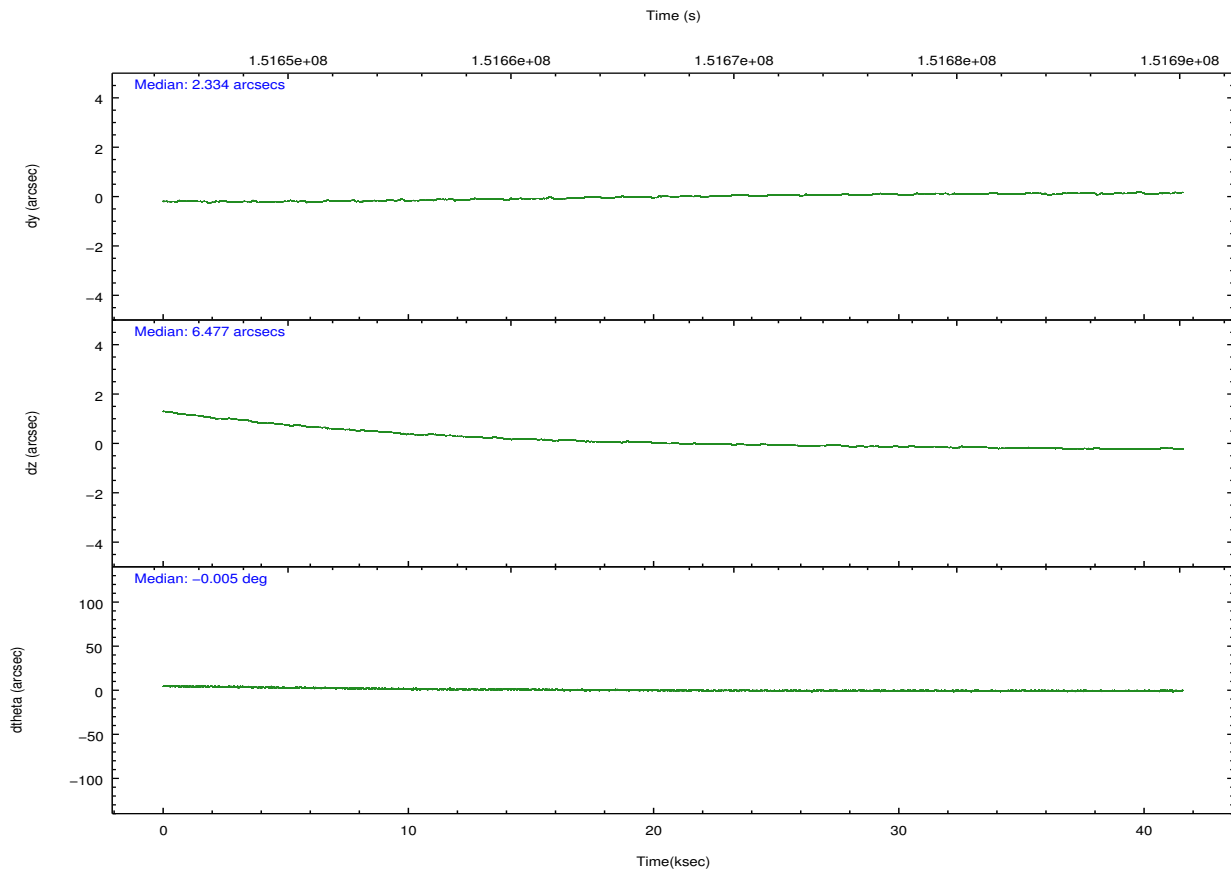
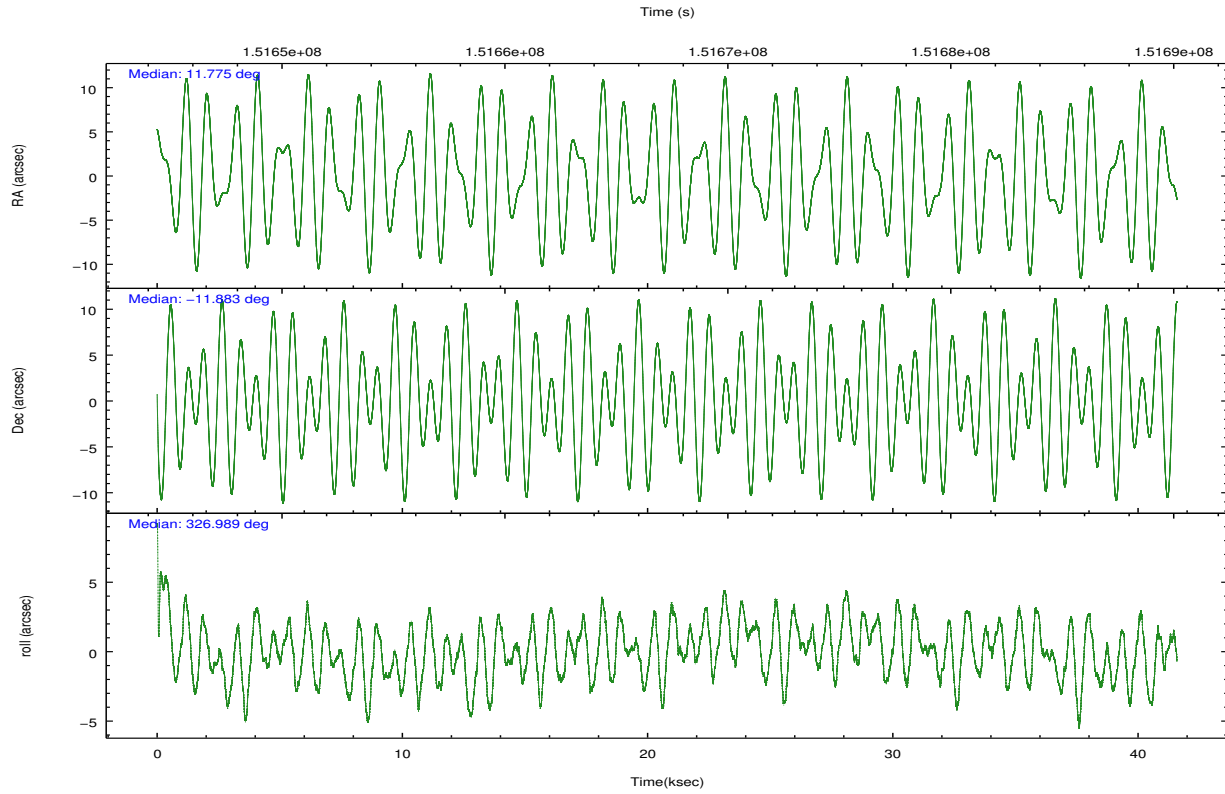
	ccd 2	ccd 3	ccd 5	ccd 6	ccd 7	ccd 8		ccd 2	ccd 3	ccd 5	ccd 6	ccd 7	ccd 8
level 1 events	221807	195982	413136	212417	336015	251568	grade 0 events	13308	12309	58121	19361	28752	26148
rejected events	195224	171344	120875	178279	92467	184557		5%	6%	14%	9%	8%	10%
rejected %	88%	87%	29%	83%	27%	73%	grade 1 events	118	123	964	127	220	186
								0%	0%	0%	0%	0%	0%
							grade 2 events	5066	4354	78491	5562	48211	13290
								2%	2%	18%	2%	14%	5%
							grade 3 events	2372	2272	18726	2483	21478	6484
								1%	1%	4%	1%	6%	2%
							grade 4 events	2347	2264	18184	2540	21119	6011
								1%	1%	4%	1%	6%	2%
							grade 5 events	5548	6023	21721	6554	20463	9472
								2%	3%	5%	3%	6%	3%
							grade 6 events	3491	3440	118781	4199	124027	15085
								1%	1%	28%	1%	36%	5%
							grade 7 events	189557	165197	98148	171591	71745	174892
								85%	84%	23%	80%	21%	69%

2.2 Compared Parameters

Parameter	Planned	Actual	Parameter	Planned	Actual
Instrument	ACIS	ACIS	Obspar format version number	7	7
Detector	ACIS-235678	ACIS-235678	Obspar file type	PREDICTED	ACTUAL
Grating	NONE	NONE	Obspar update status	NONE	UPDATED
Data mode	VFAINT	VFAINT	Number of optional ACIS chips dropped	0	0
Observation mode	POINTING	POINTING	On-chip summing requested	N	N
[deg] Pointing RA	11.747893	11.77571168710196	Subarray requested	NONE	NONE
[deg] Pointing Dec	-11.881599	-11.88268032663587	Alternating exposures requested	N	N
[deg] Pointing Roll	326.831681	326.9940431359151	[s] Primary exposure time	0.000000	3.2
[mm] SIM focus pos	-0.684267	-0.6828225247311905			
[mm] SIM defocus	0	0.001444936568705701			
[mm] SIM translation stage pos	-190.132523	-190.1425803651734			
[mm] SIM translation stage offset	0	0.01005778216563158			
[s] Observation start time (MET)	151647084.184000	151645912.7123			
Observation start date	2002-10-22T04:10:20	2002-10-22T03:51:52			
[s] Observation end time (MET)	151688066.184000	151688380.51406			
Observation end date	2002-10-22T15:33:22	2002-10-22T15:39:40			
Read mode	TIMED	TIMED			

2.3 Aspect



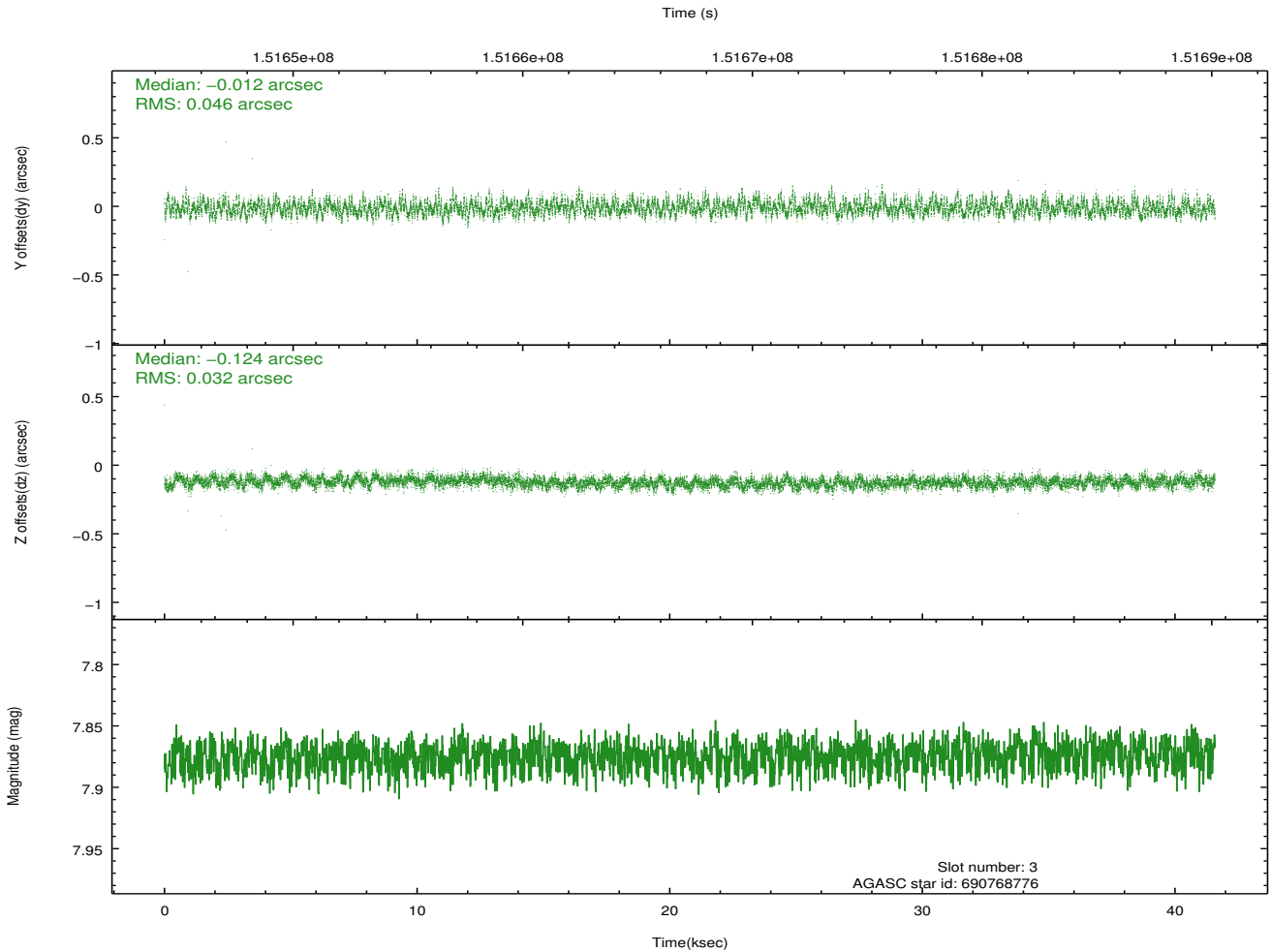
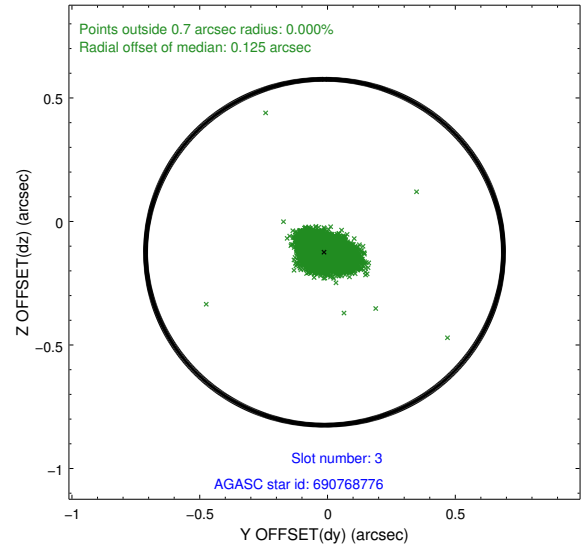
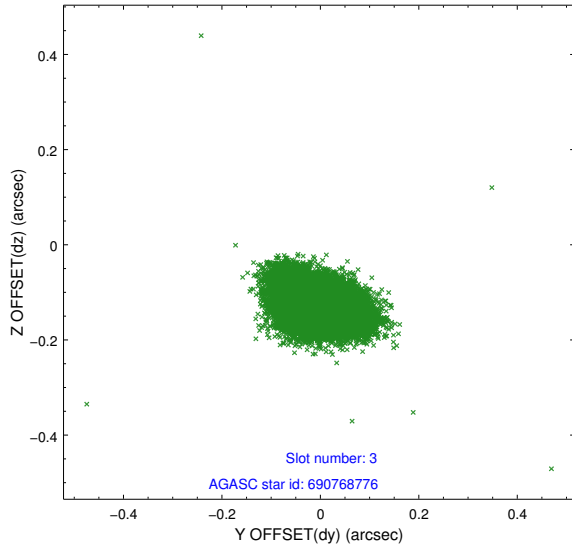


Slot Statistics

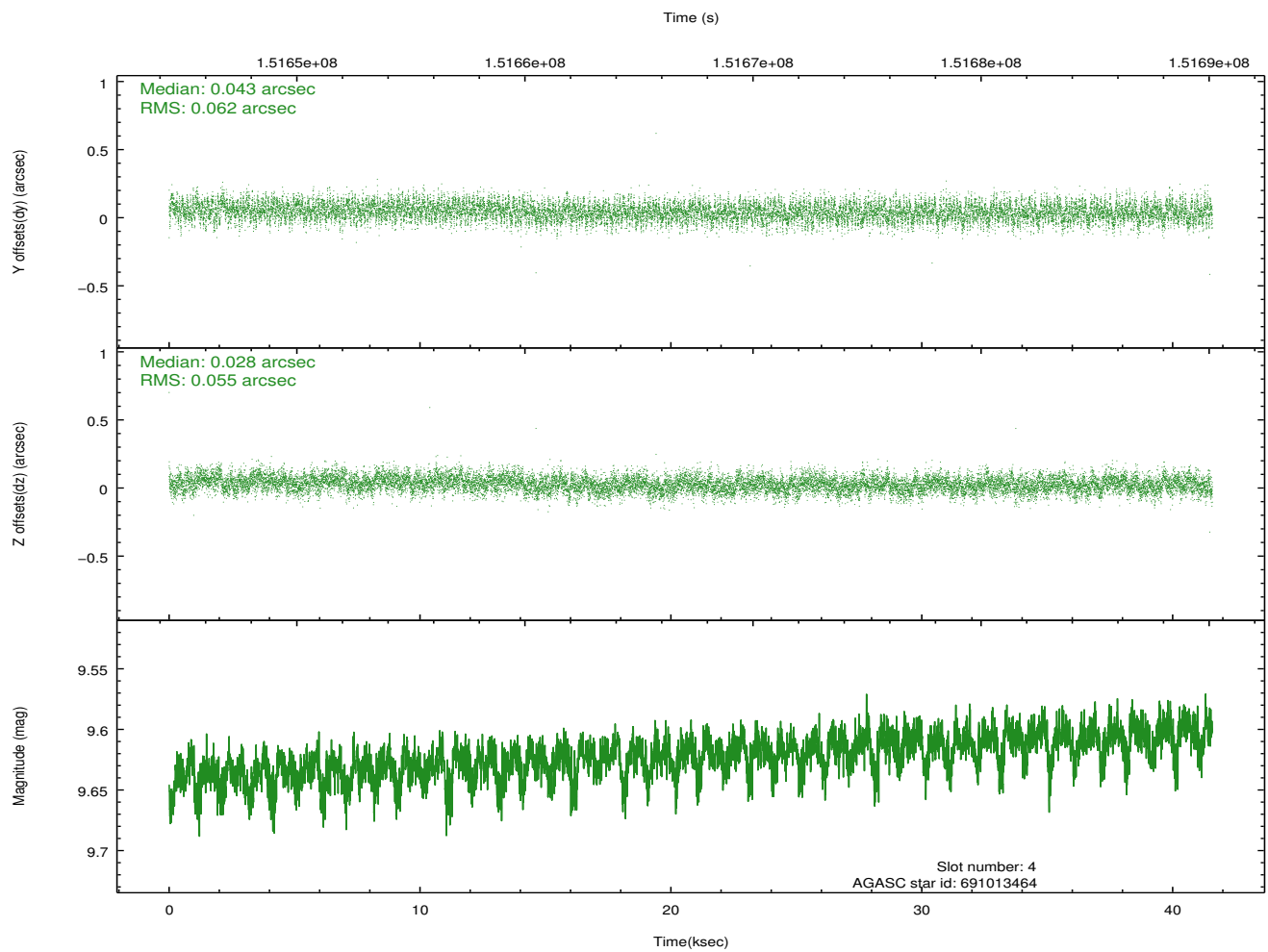
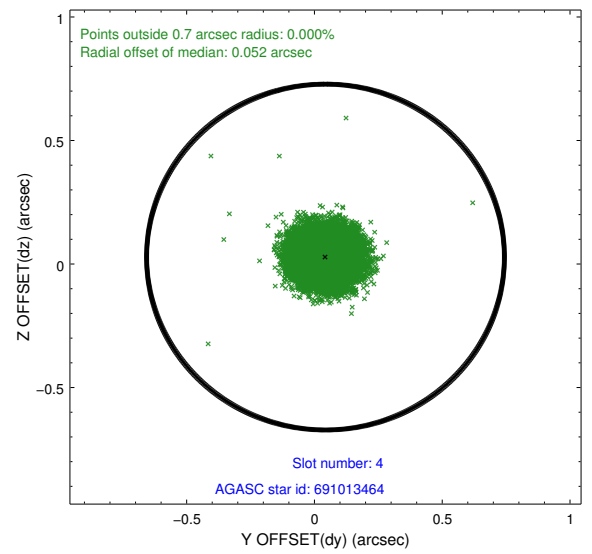
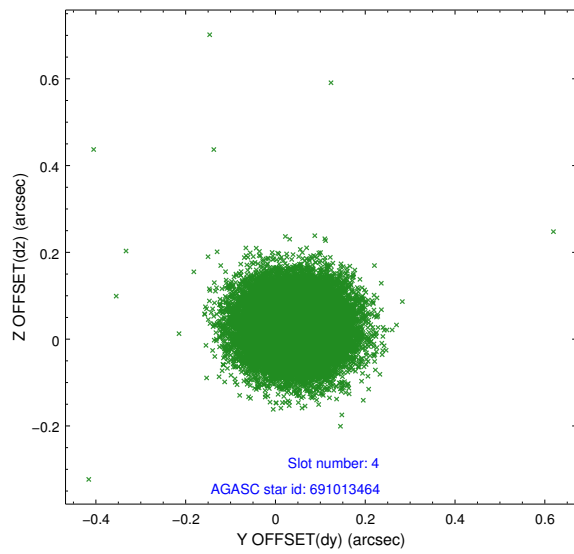
slot	status	id	mag	n_pts	med_dy	med_dz	dr1	dr2	ra	dec	mean_y	mean_z
0	FID	ACIS-S-2	7.12	10143	-0.039	0.005	0.012	0.024	0.000000	0.000000	-754.95	-1727.75
1	FID	ACIS-S-4	7.21	10142	-0.014	0.018	0.012	0.021	0.000000	0.000000	2158.32	180.77
2	FID	ACIS-S-5	7.24	10140	0.022	-0.013	0.014	0.030	0.000000	0.000000	-1807.75	174.37
3	GUIDE	690768776	7.87	20282	-0.012	-0.124	0.058	0.097	11.742148	-11.162917	-1431.75	2154.36
4	GUIDE	691013464	9.62	20272	0.043	0.028	0.089	0.141	12.423638	-11.682167	1603.75	1902.22
5	GUIDE	691020760	9.27	20273	0.088	0.157	0.076	0.123	12.351590	-11.753742	1531.53	1547.85
6	GUIDE	690889992	7.09	20285	0.047	-0.063	0.058	0.093	11.248130	-12.144345	-952.70	-1755.55
7	GUIDE	690887376	8.89	20280	-0.167	0.003	0.085	0.133	10.839680	-12.086987	-2267.86	-2372.85

2.4 Star Slots

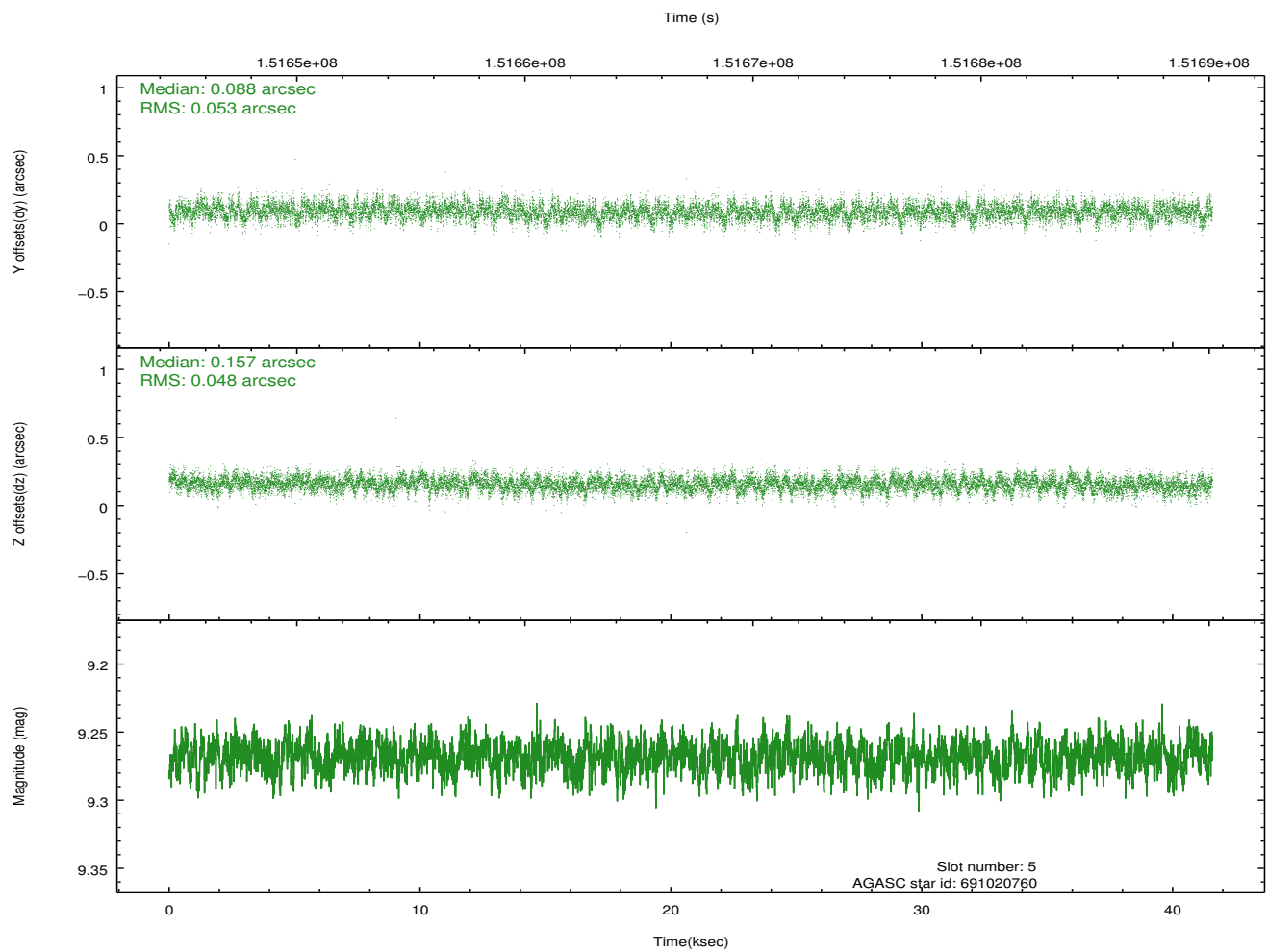
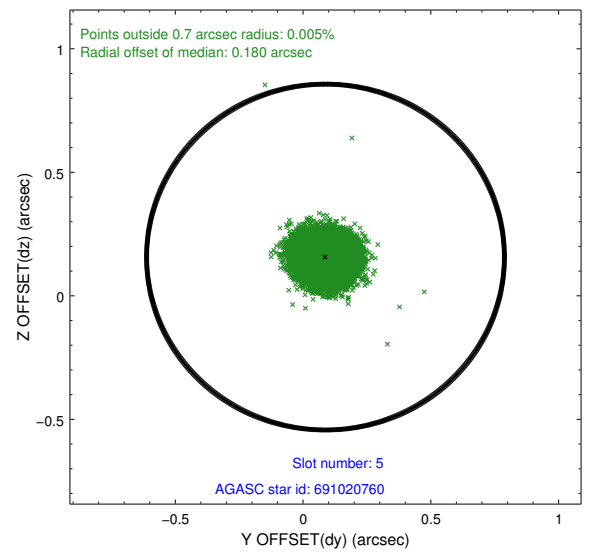
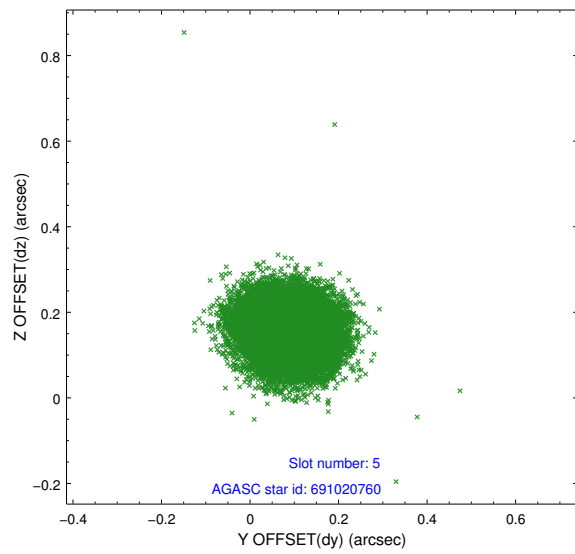
2.4.1 Slot 3



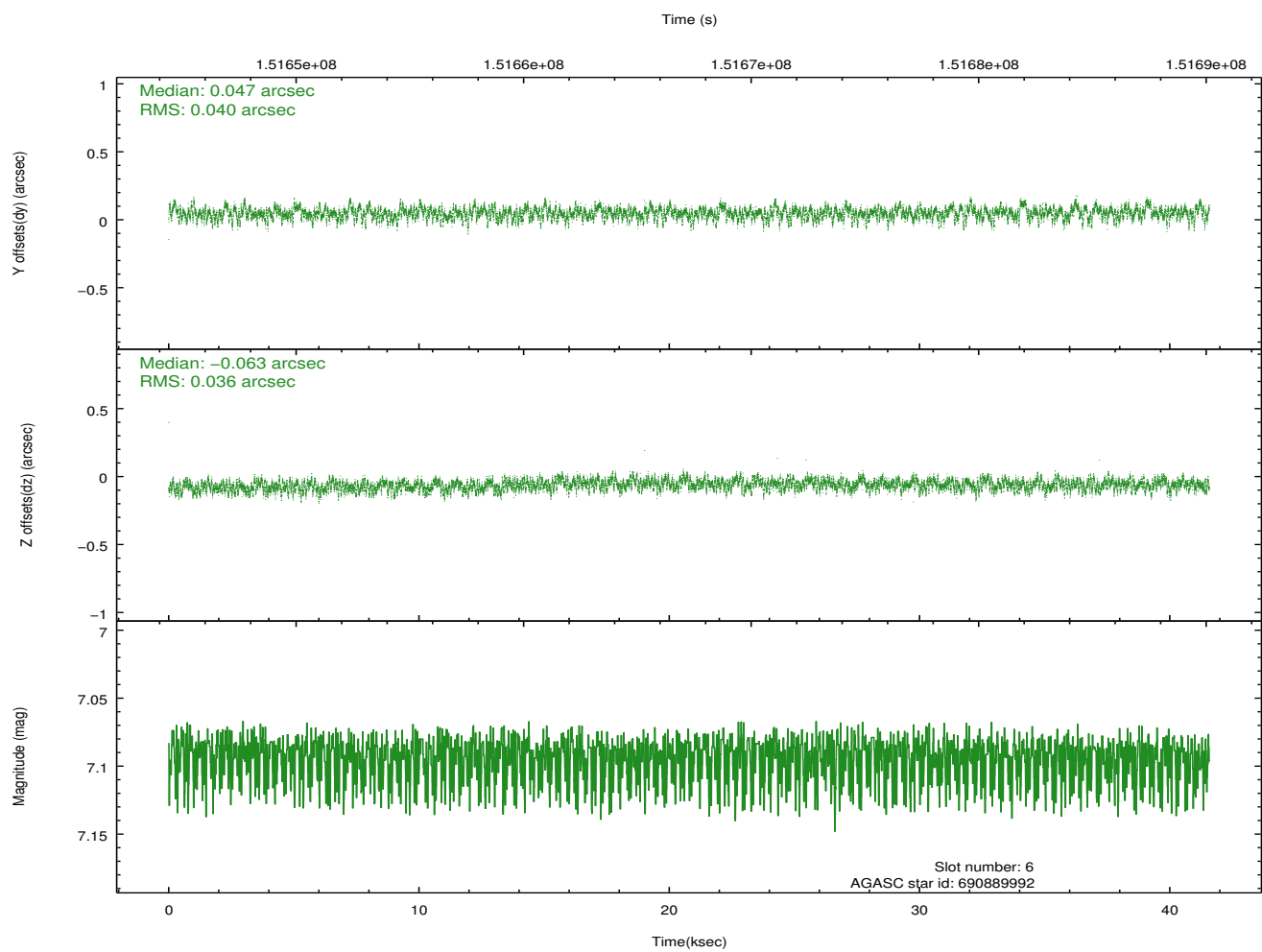
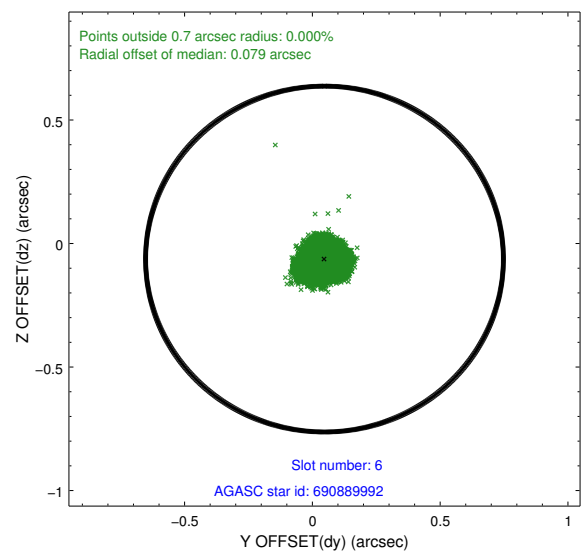
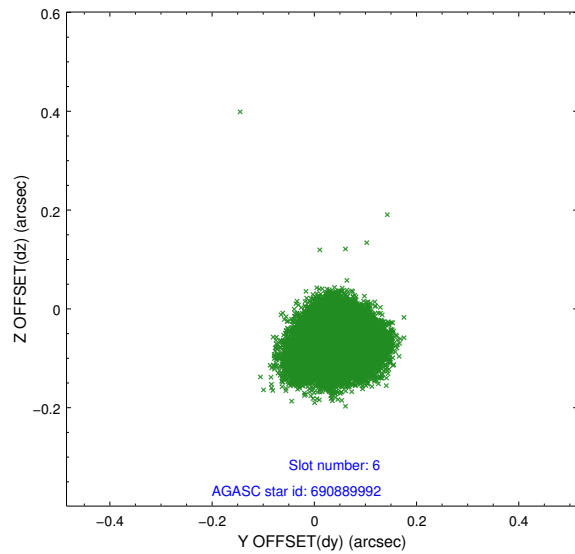
2.4.2 Slot 4



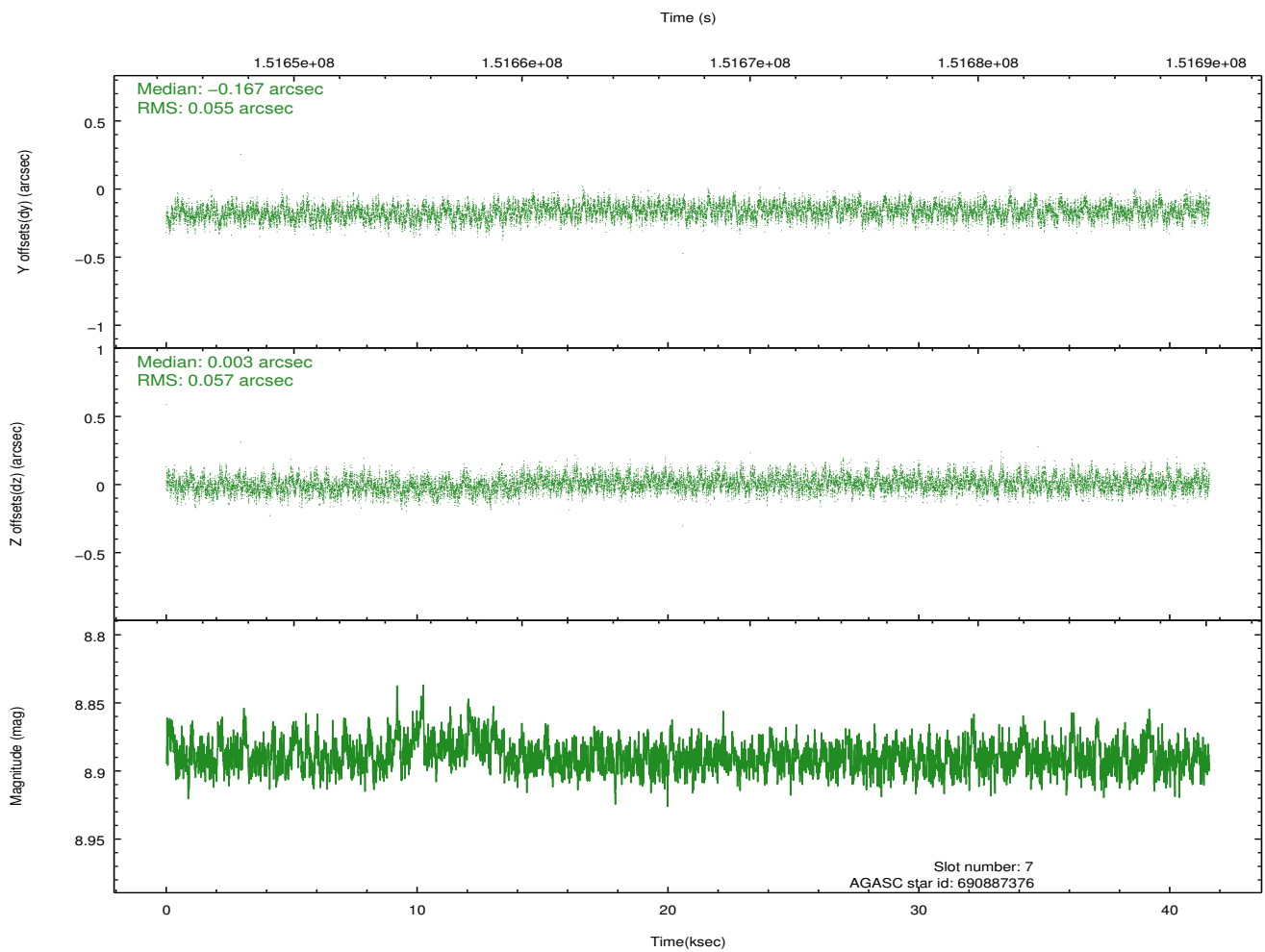
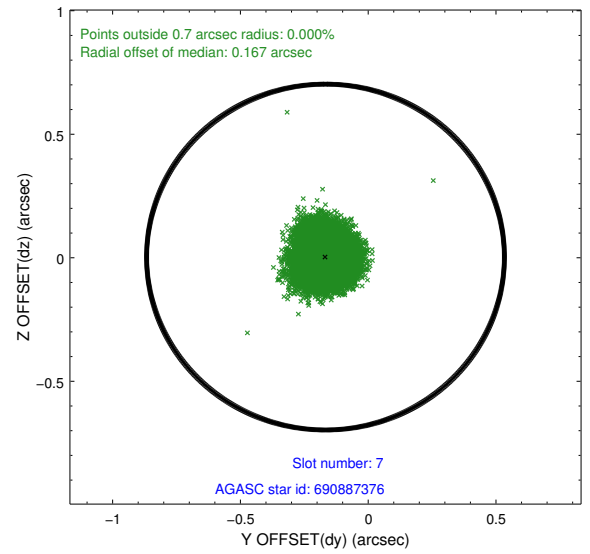
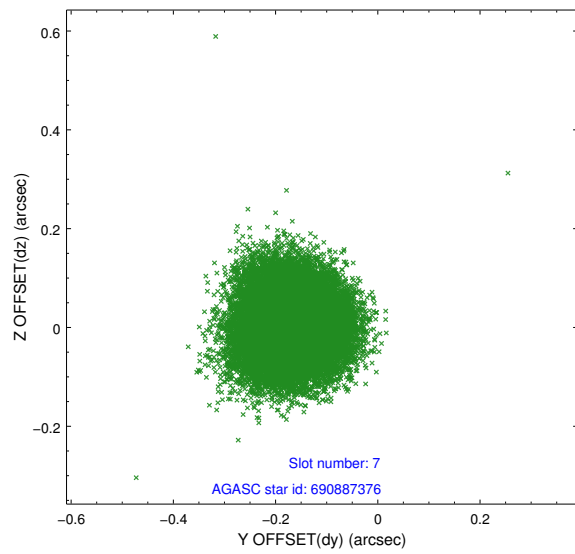
2.4.3 Slot 5



2.4.4 Slot 6

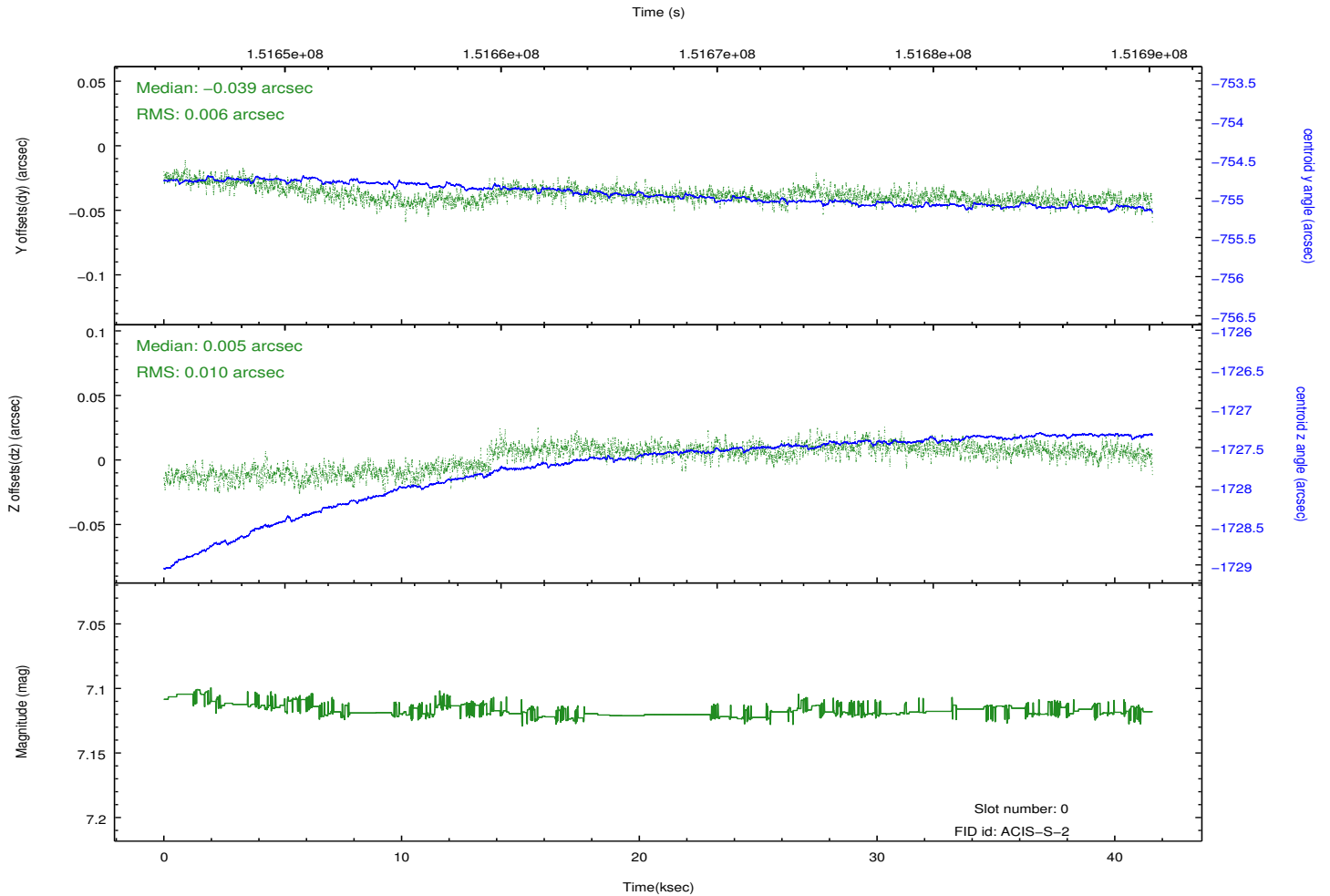
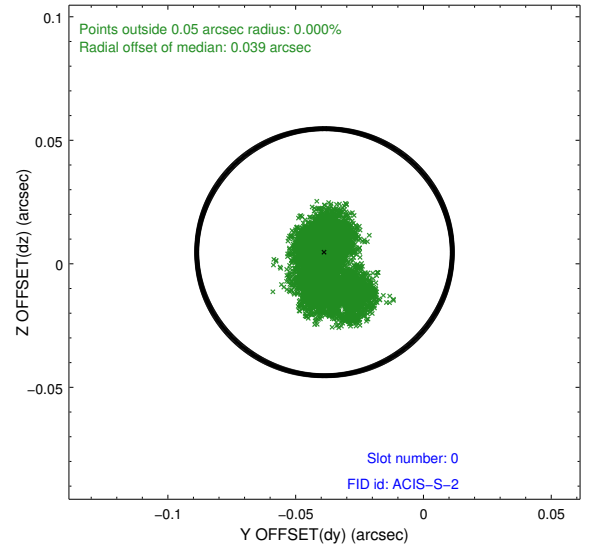
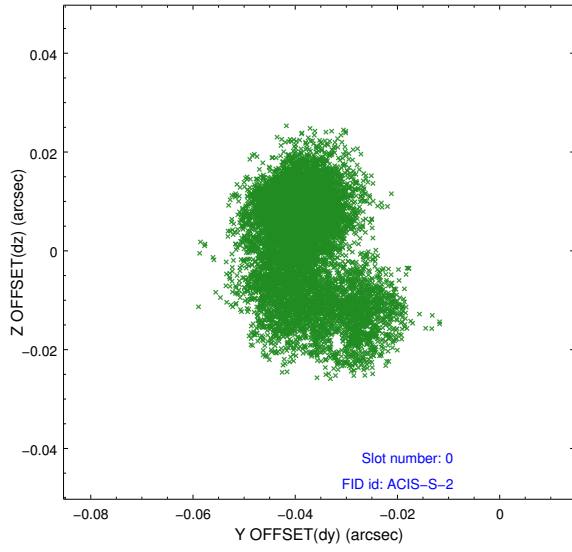


2.4.5 Slot 7

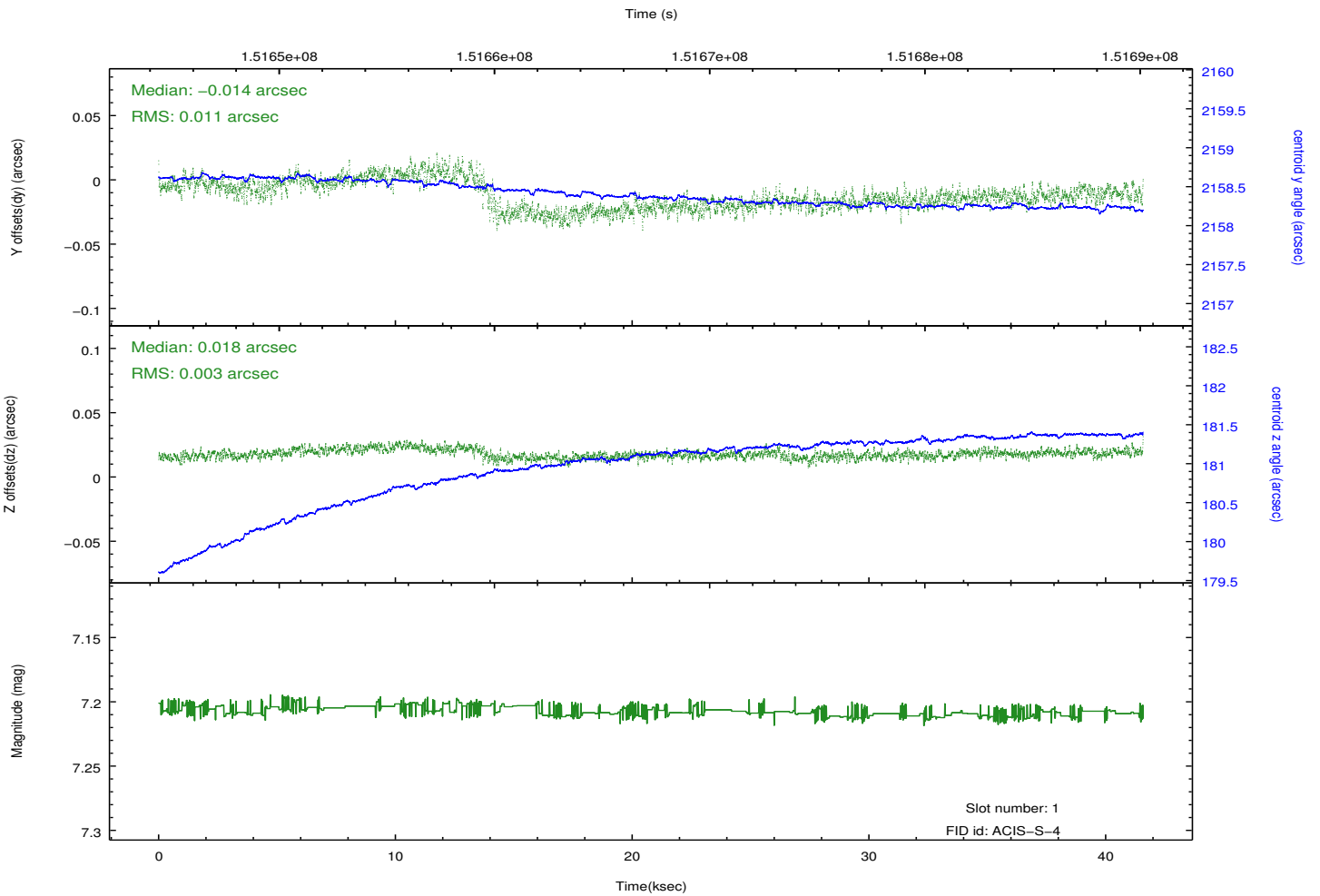
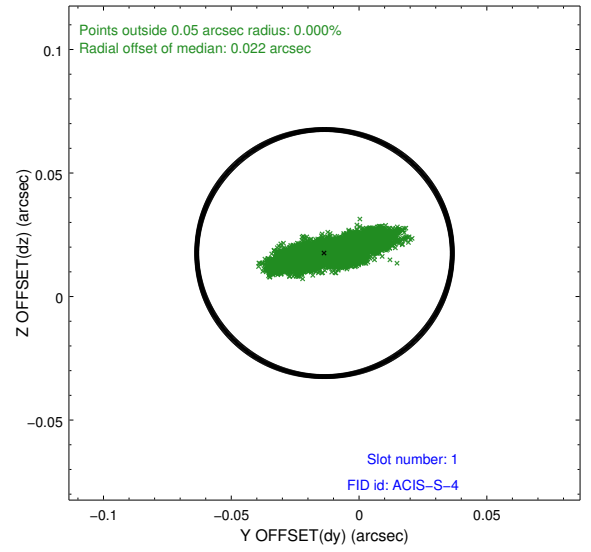
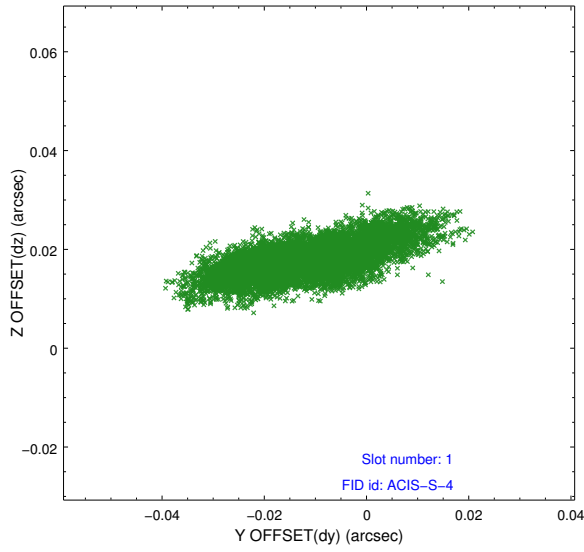


2.5 FID Slots

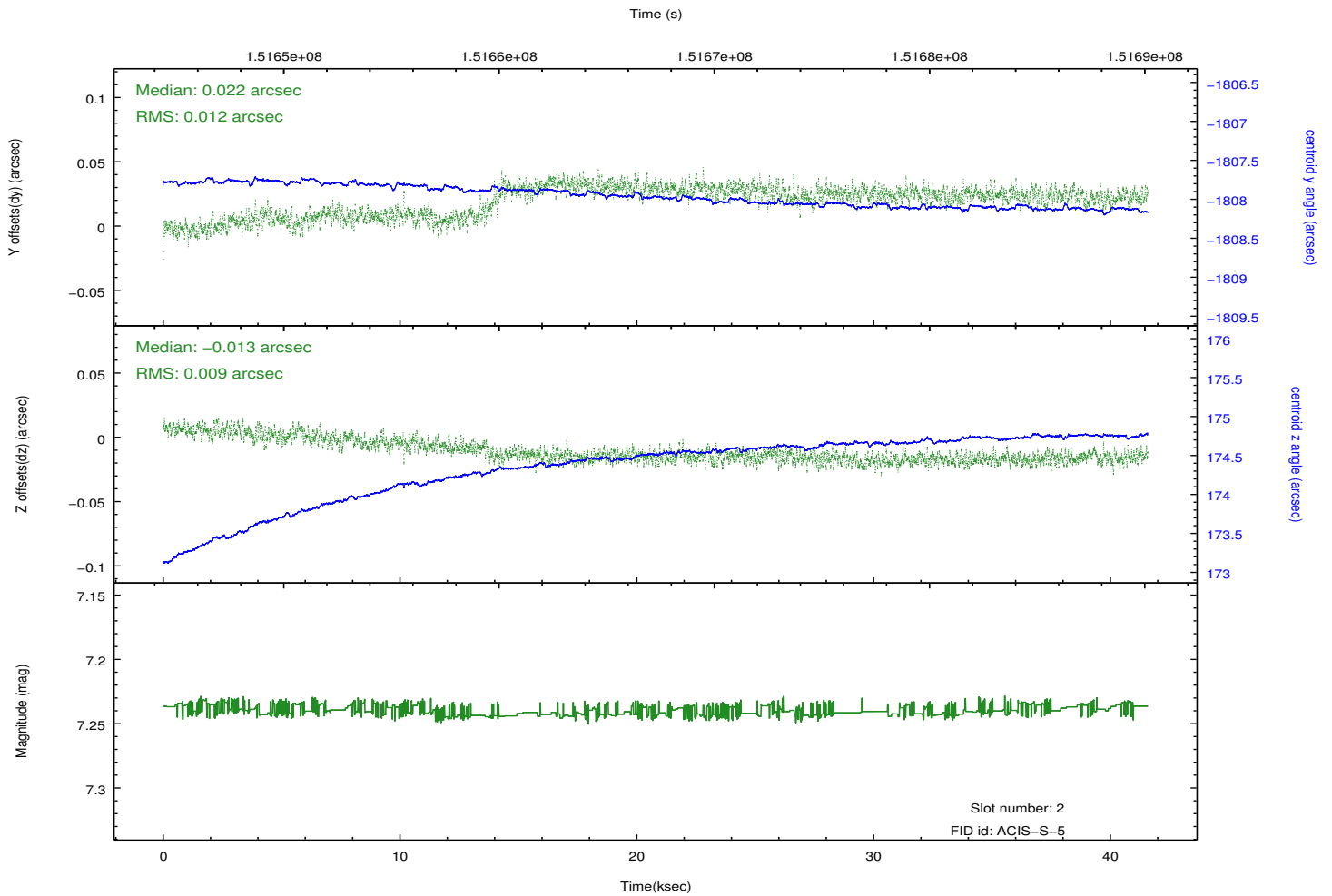
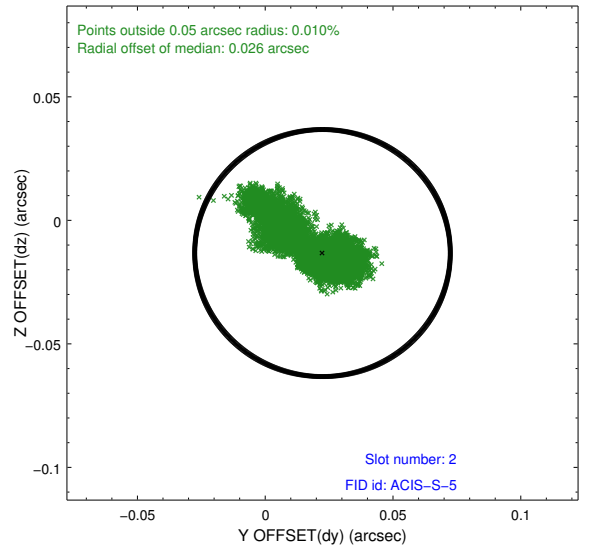
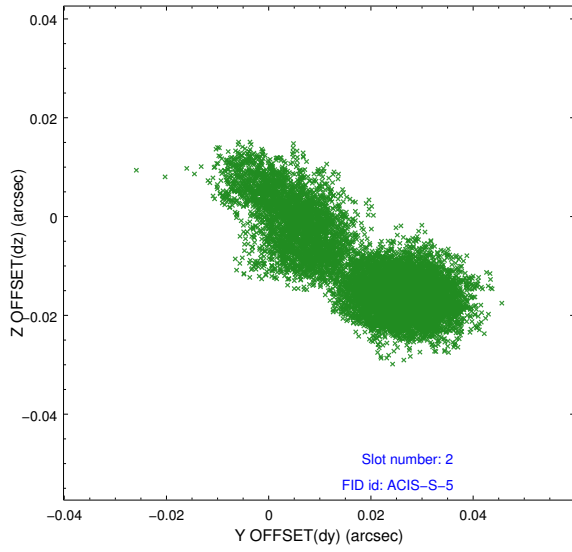
2.5.1 Slot 0



2.5.2 Slot 1



2.5.3 Slot 2



A Summary

A.1 Status

V&V Scientist	Jen Lauer
V&V Date (YYYY-MM-DD)	2012.10.25
V&V Edition	1
V&V Disposition and Status	OK
V&V Charge Time	40.947

A.2 Comments