

V&V Reference Report

L2 ASCDS Version : 8.4.5

Observation 2925 - L2 Version 3
Chandra X-Ray Center

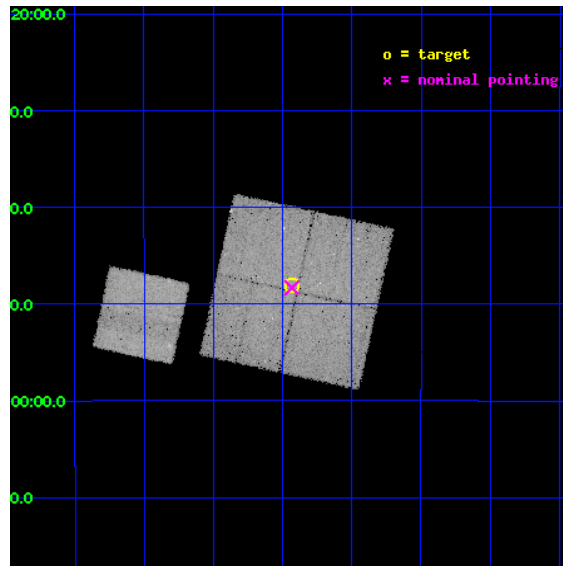
L2 Processing Date : Oct 17 2012

Contents

1	Front	2
2	OBI	3
2.1	OBI	3
2.1.1	Images	3
2.1.2	Bias	3
2.1.3	Parameters	4
2.1.4	Events	4
2.2	Compared Parameters	5
2.3	Aspect	6
2.4	Star Slots	9
2.4.1	Slot 3	9
2.4.2	Slot 4	10
2.4.3	Slot 5	11
2.4.4	Slot 6	12
2.4.5	Slot 7	13
2.5	FID Slots	14
2.5.1	Slot 0	14
2.5.2	Slot 1	15
2.5.3	Slot 2	16
A	Summary	17
A.1	Status	17
A.2	Comments	17

1 Front

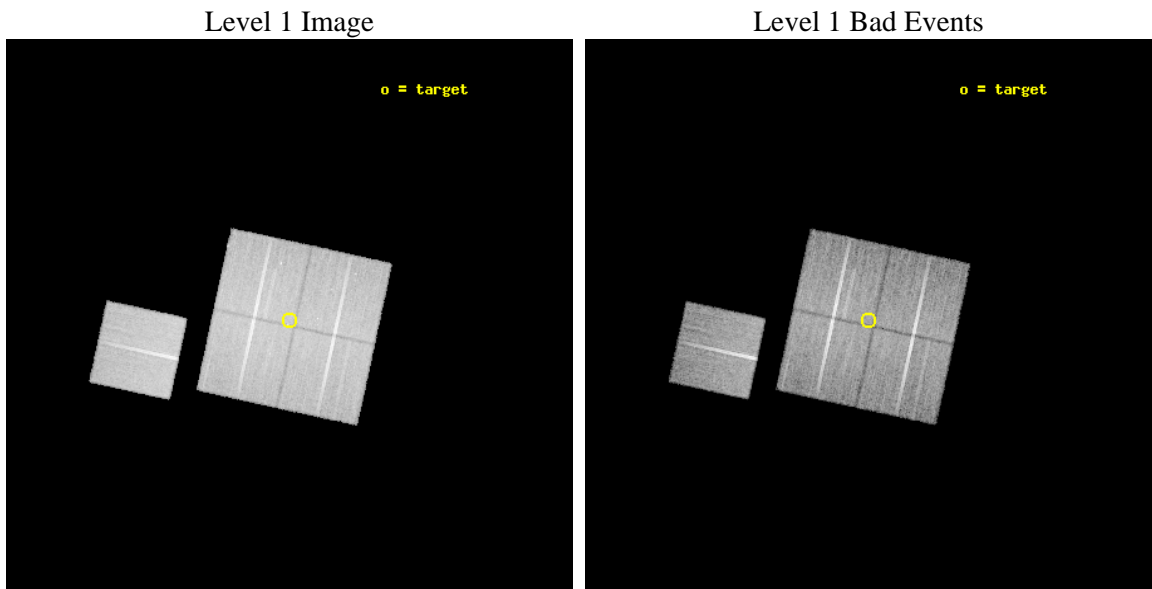
seq_num	600262	Sequence number
obs_id	2925	Observation id
title	POPULATION STUDIES OF DWARF GALAXIES	Proposal title
observer	Allyn Tennant	Principal investigator
object	NGC 6822	Source name
dtcycle	0	
cycle	P	events from which exps? Prim/Second/Both
ra_targ	296.234167	Observer's specified target RA [deg]
dec_targ	-14.801111	Observer's specified target Dec [deg]
ra_nom	296.23327026409	Nominal RA [deg]
dec_nom	-14.805686916206	Nominal Dec [deg]
roll_nom	282.29449739287	Nominal Roll [deg]
revision	3	Processing version of data
ontime	28485.899945199	Sum of GTIs [s]
livetime	28113.710691401	Livetime [s]
ontime0	28482.758955091	Sum of GTIs [s]
ontime1	28485.899945199	Sum of GTIs [s]
ontime2	28479.617994815	Sum of GTIs [s]
ontime3	28485.899945199	Sum of GTIs [s]
ontime6	28482.758955032	Sum of GTIs [s]
l2events	126342	Number of level 2 events



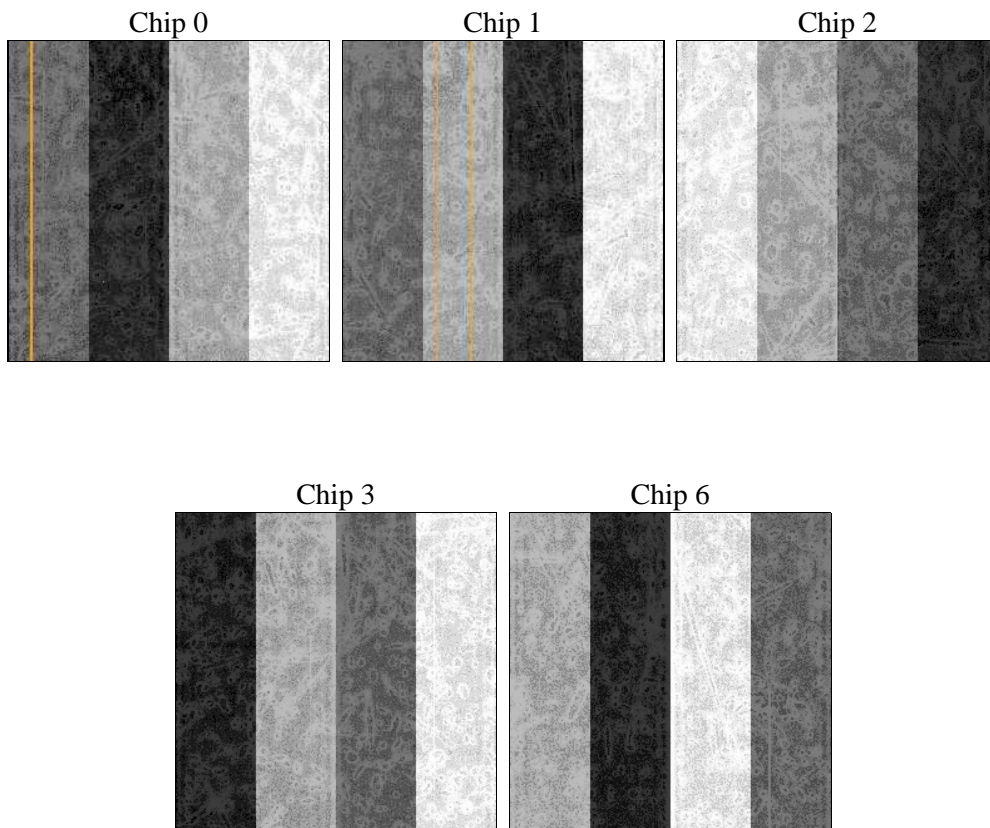
2 OBI

2.1 OBI

2.1.1 Images



2.1.2 Bias



2.1.3 Parameters

obi_num	0	Obi number	sched_exp_time	28369.363000	[s] Scheduled observation exposure time
ascdsver	8.4.5	Processing system revision	ontime	28485.899945199	Sum of GTIs [s]
caldbver	4.5.2	 	ontime0	28482.758955091	Sum of GTIs [s]
date	2012-10-17T11:14:36	Date and time of file creation	ontime1	28485.899945199	Sum of GTIs [s]
revision	3	Processing version of data	ontime2	28479.617994815	Sum of GTIs [s]
			ontime3	28485.899945199	Sum of GTIs [s]
			ontime6	28482.758955032	Sum of GTIs [s]
			l1events	893107	Number of level 1 events

2.1.4 Events

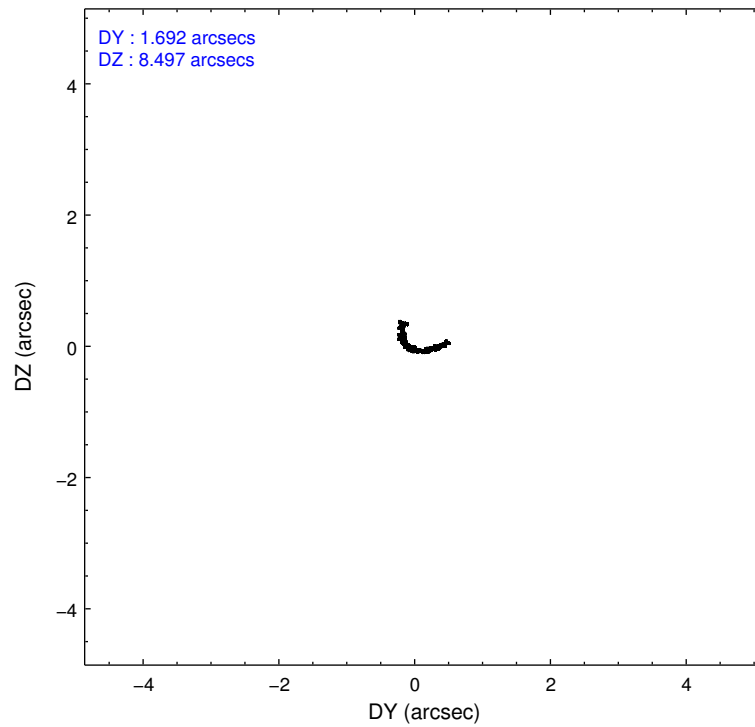
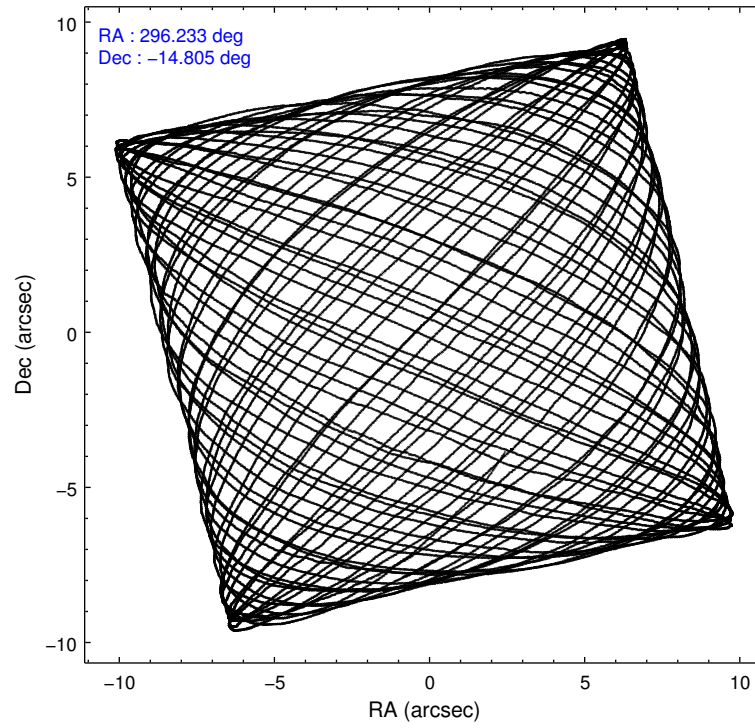
	ccd 0	ccd 1	ccd 2	ccd 3	ccd 6
level 1 events	169216	170102	183589	184344	185856
rejected events	142076	140853	156522	156640	153532
rejected %	83%	82%	85%	84%	82%

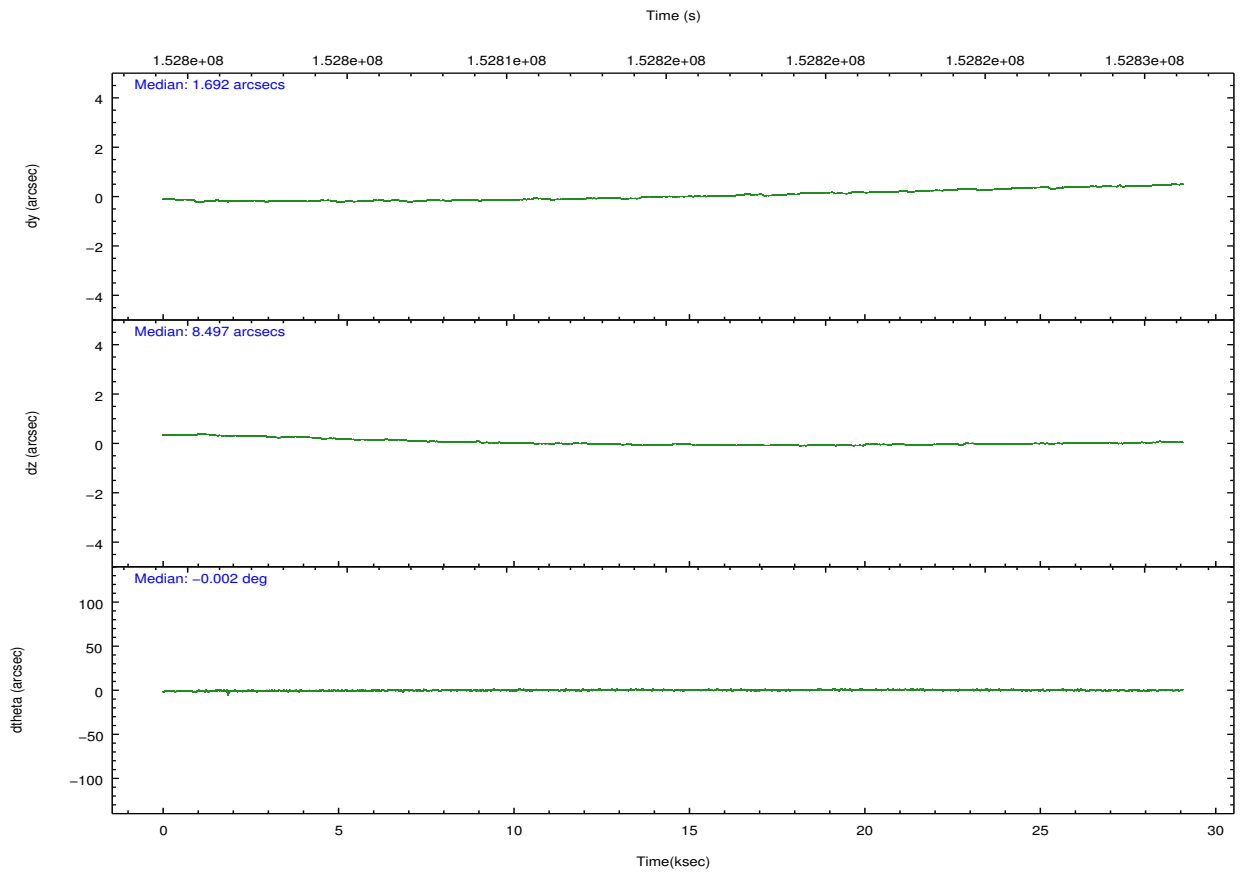
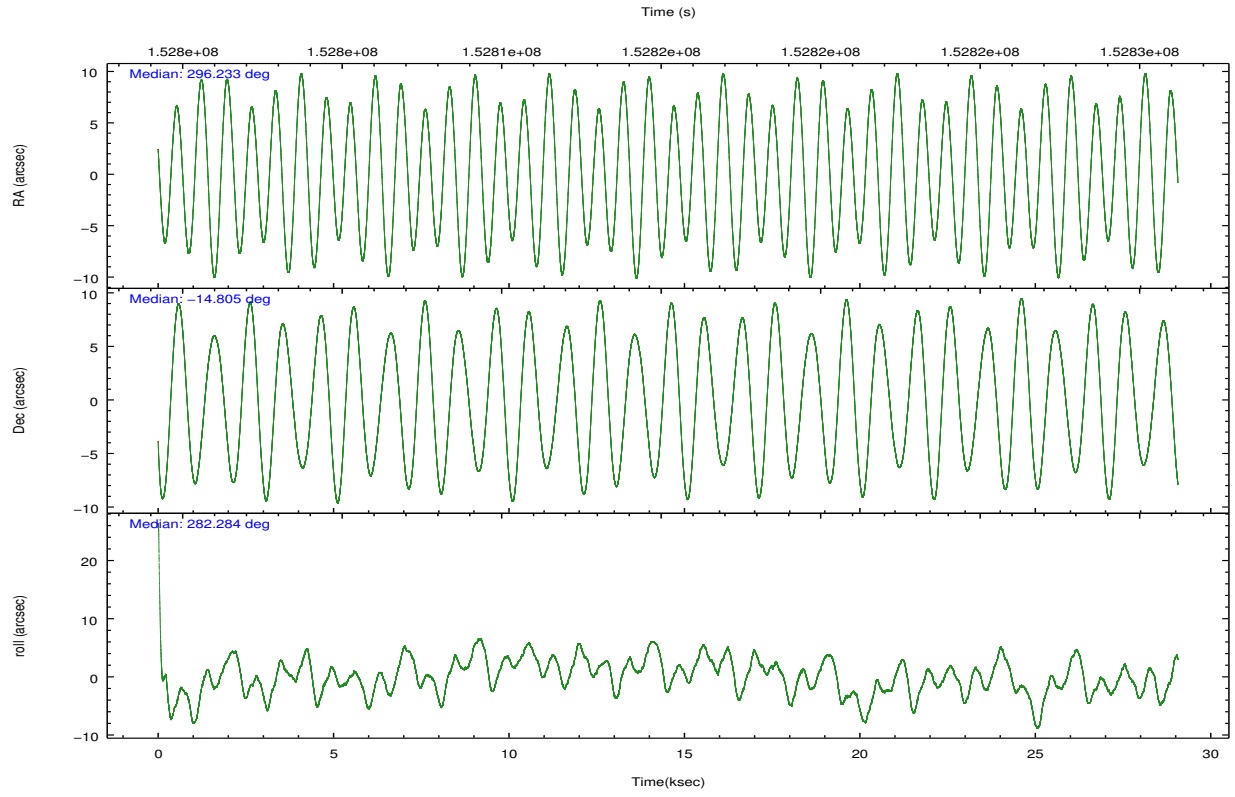
	ccd 0	ccd 1	ccd 2	ccd 3	ccd 6
grade 0 events	13398	13791	14250	14327	17578
	7%	8%	7%	7%	9%
grade 1 events	110	79	129	112	116
	0%	0%	0%	0%	0%
grade 2 events	5465	6392	5168	5137	6114
	3%	3%	2%	2%	3%
grade 3 events	2248	2276	2058	2139	2202
	1%	1%	1%	1%	1%
grade 4 events	2060	2250	2004	2144	2073
	1%	1%	1%	1%	1%
grade 5 events	6833	7132	6615	7545	7634
	4%	4%	3%	4%	4%
grade 6 events	3978	4556	3595	3965	4374
	2%	2%	1%	2%	2%
grade 7 events	135124	133626	149770	148975	145765
	79%	78%	81%	80%	78%

2.2 Compared Parameters

Parameter	Planned	Actual	Parameter	Planned	Actual
Instrument	ACIS	ACIS	Obspar format version number	7	7
Detector	ACIS-01236	ACIS-01236	Obspar file type	PREDICTED	ACTUAL
Grating	NONE	NONE	Obspar update status	NONE	UPDATED
Data mode	VFAINT	VFAINT	Number of optional ACIS chips dropped	0	0
Observation mode	POINTING	POINTING	On-chip summing requested	N	N
[deg] Pointing RA	296.214140	296.2332702640946	Subarray requested	NONE	NONE
[deg] Pointing Dec	-14.785485	-14.80568691620631	Alternating exposures requested	N	N
[deg] Pointing Roll	282.080922	282.2944973928717	[s] Primary exposure time	0.000000	3.1
[mm] SIM focus pos	-0.782348	-0.7809083437167272			
[mm] SIM defocus	0	0.001439871863259334			
[mm] SIM translation stage pos	-233.592463	-233.5874344608287			
[mm] SIM translation stage offset	0	-0.005018542100998502			
[s] Observation start time (MET)	152801382.184000	152800168.84777			
Observation start date	2002-11-04T12:48:38	2002-11-04T12:29:28			
[s] Observation end time (MET)	152829751.184000	152830066.04901			
Observation end date	2002-11-04T20:41:27	2002-11-04T20:47:46			
Read mode	TIMED	TIMED			

2.3 Aspect



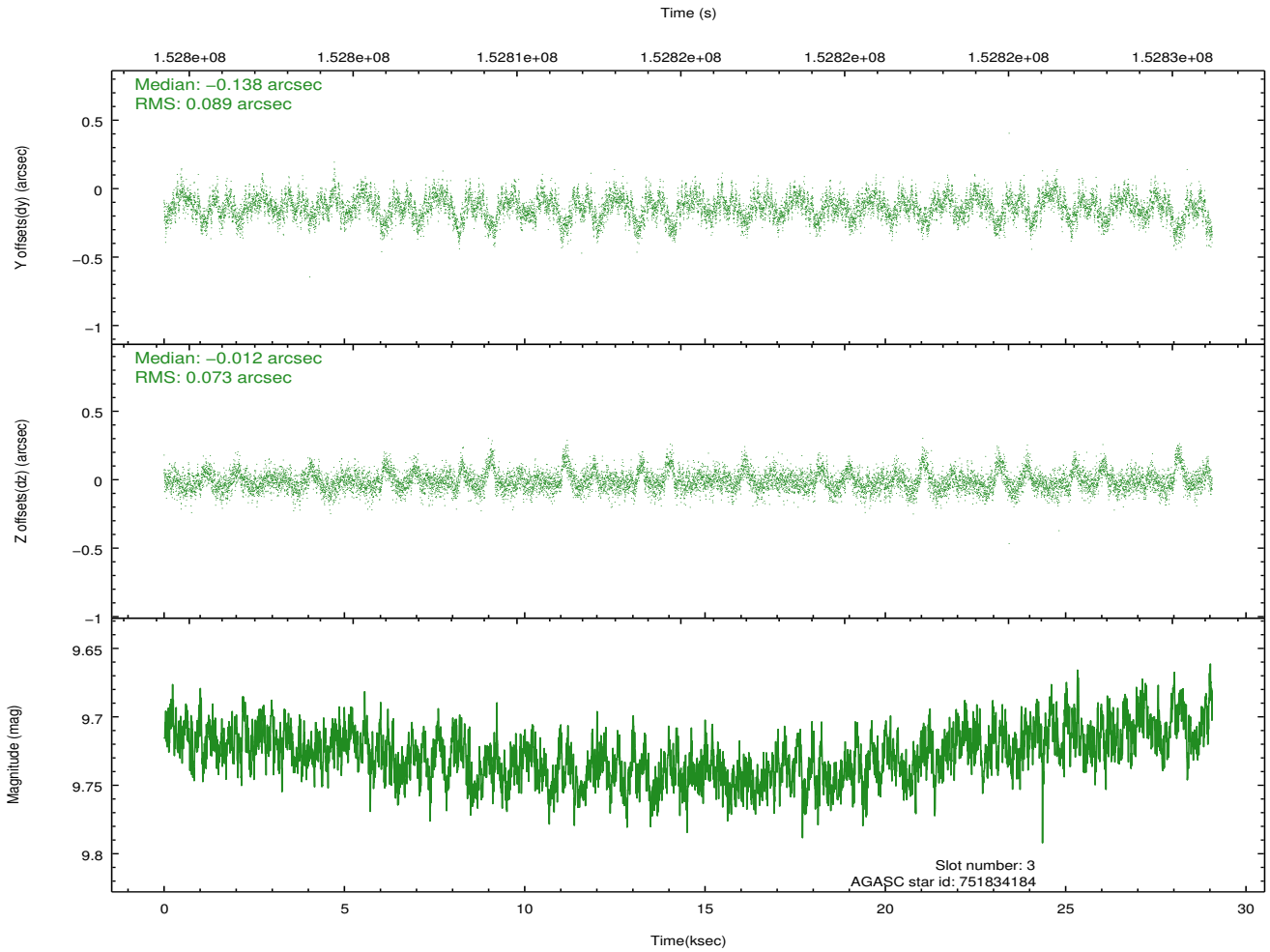
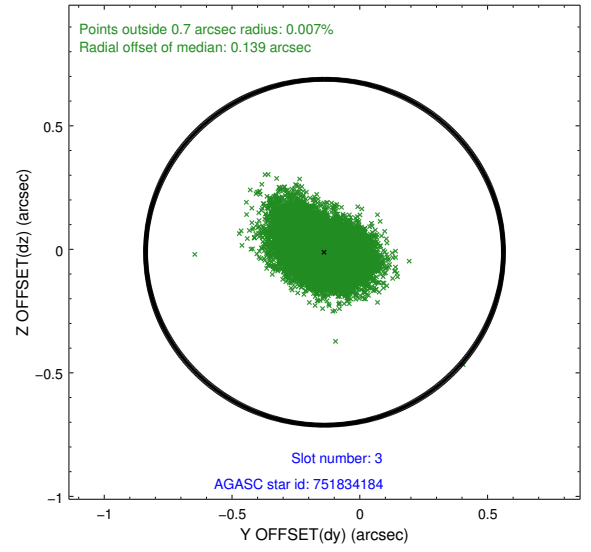
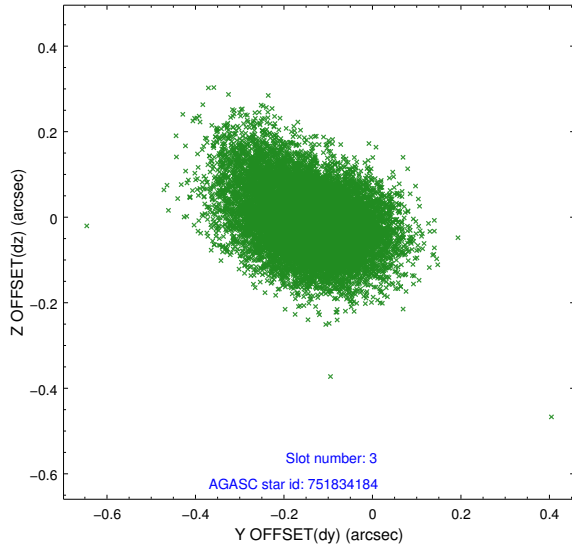


Slot Statistics

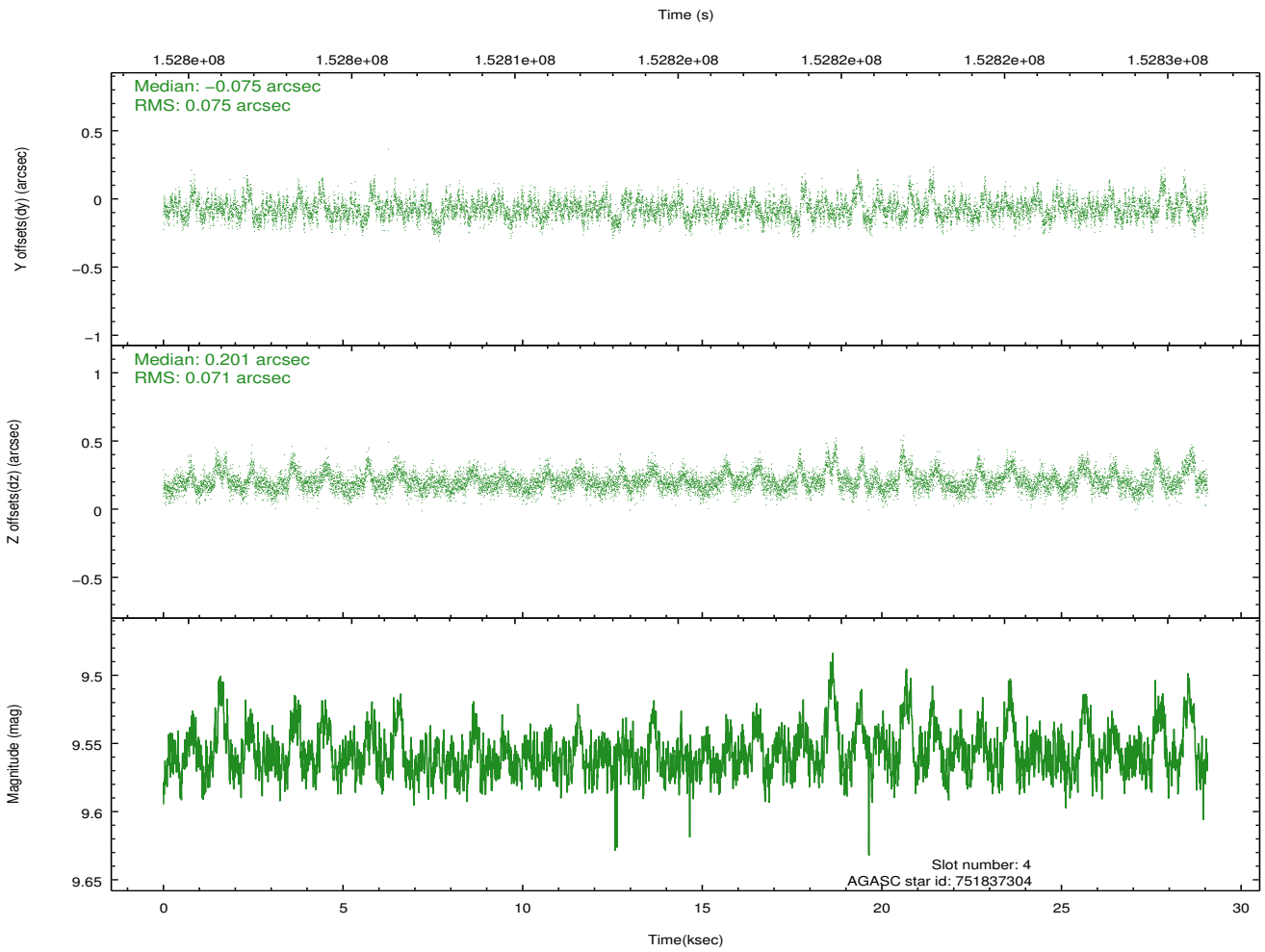
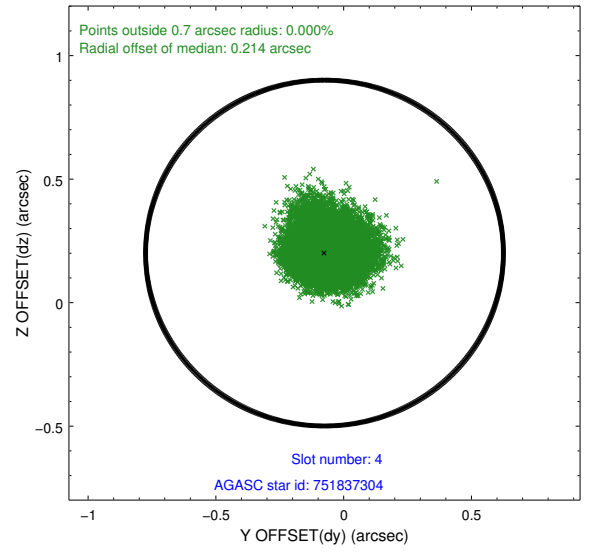
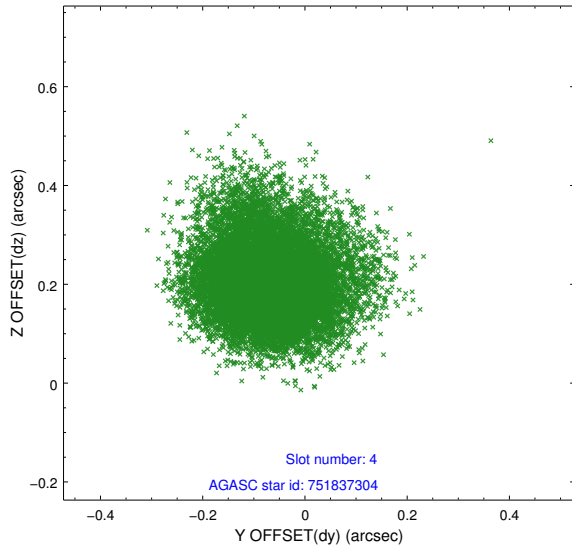
slot	status	id	mag	n_pts	med_dy	med_dz	dr1	dr2	ra	dec	mean_y	mean_z
0	FID	ACIS-I-1	7.24	7088	-0.036	0.071	0.010	0.016	0.000000	0.000000	938.05	-831.91
1	FID	ACIS-I-5	7.24	7088	-0.054	0.025	0.013	0.022	0.000000	0.000000	-1810.03	1065.50
2	FID	ACIS-I-6	7.26	7089	-0.005	-0.024	0.013	0.020	0.000000	0.000000	403.54	1710.04
3	GUIDE	751834184	9.73	14169	-0.138	-0.012	0.119	0.205	296.399856	-14.465096	-991.10	874.70
4	GUIDE	751837304	9.56	14166	-0.075	0.201	0.108	0.184	296.594330	-14.462346	-858.28	1539.81
5	GUIDE	825625880	9.63	14173	0.008	-0.120	0.097	0.165	295.781472	-15.310551	1536.99	-1864.32
6	GUIDE	825643136	9.22	14173	0.166	-0.223	0.119	0.187	295.709875	-15.353057	1635.54	-2139.49
7	GUIDE	827336272	9.26	14165	0.039	0.146	0.105	0.169	296.683541	-15.050874	1278.64	1396.18

2.4 Star Slots

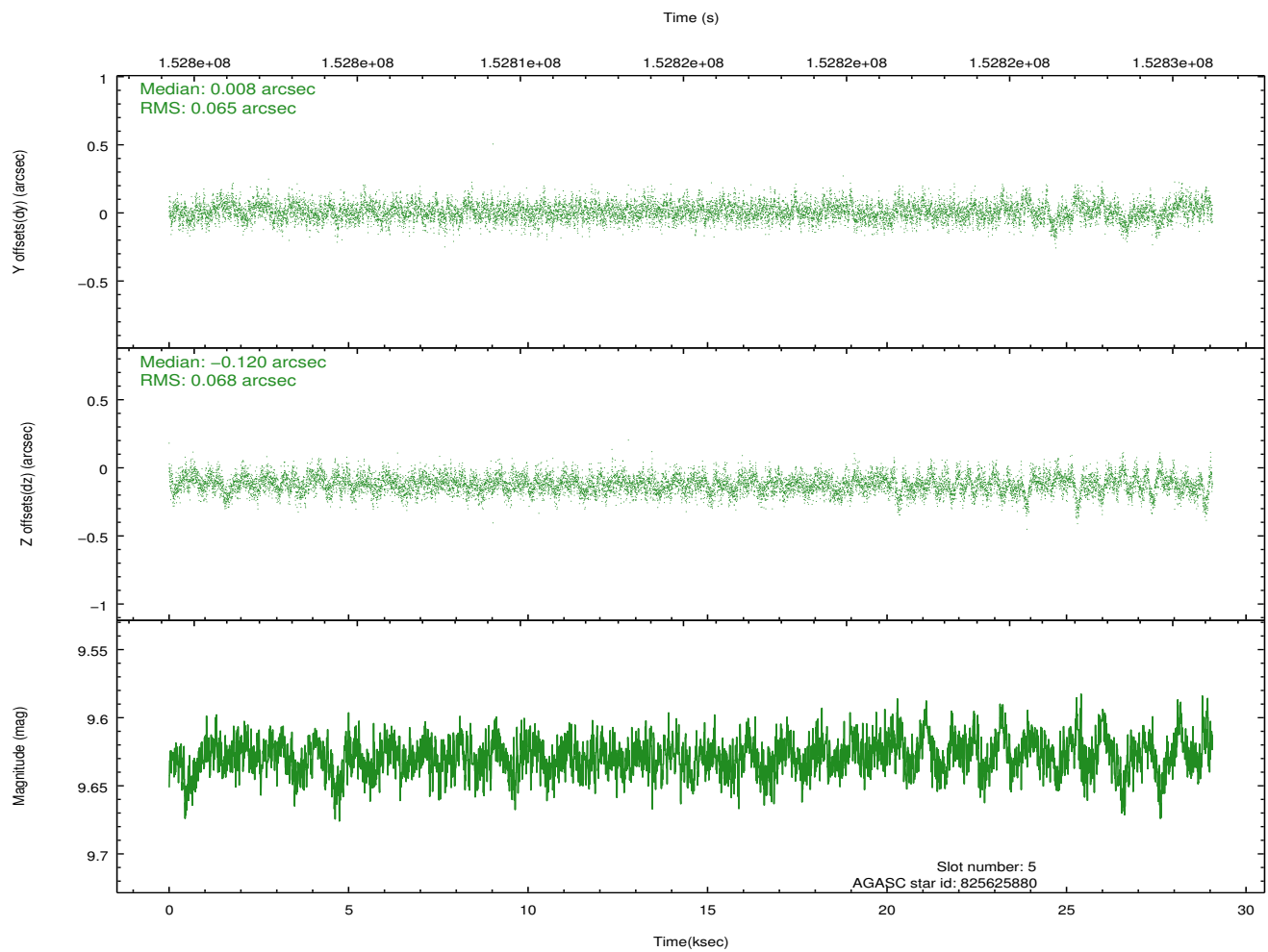
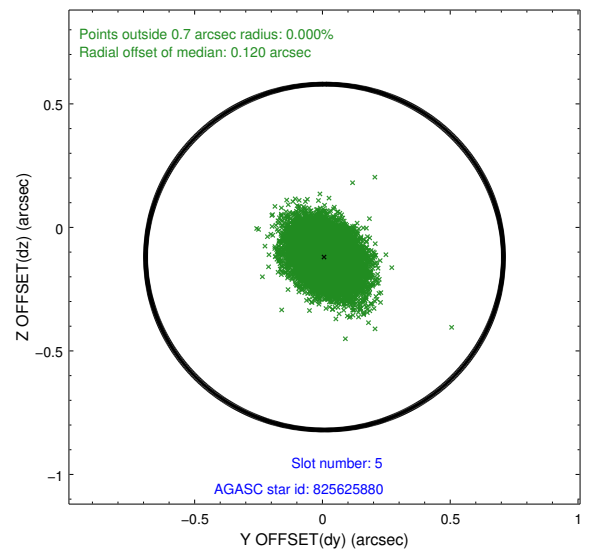
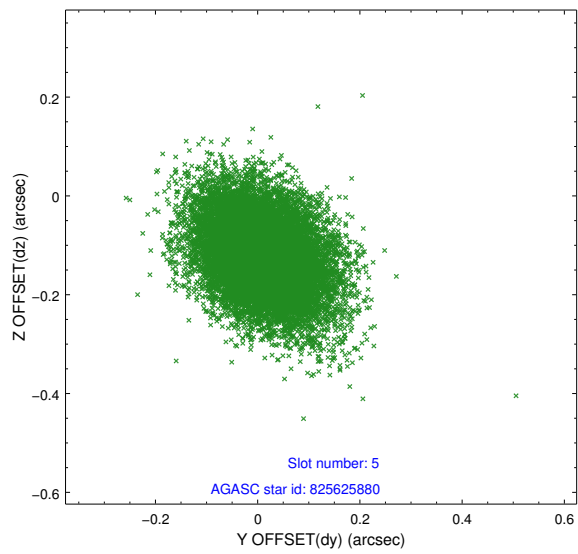
2.4.1 Slot 3



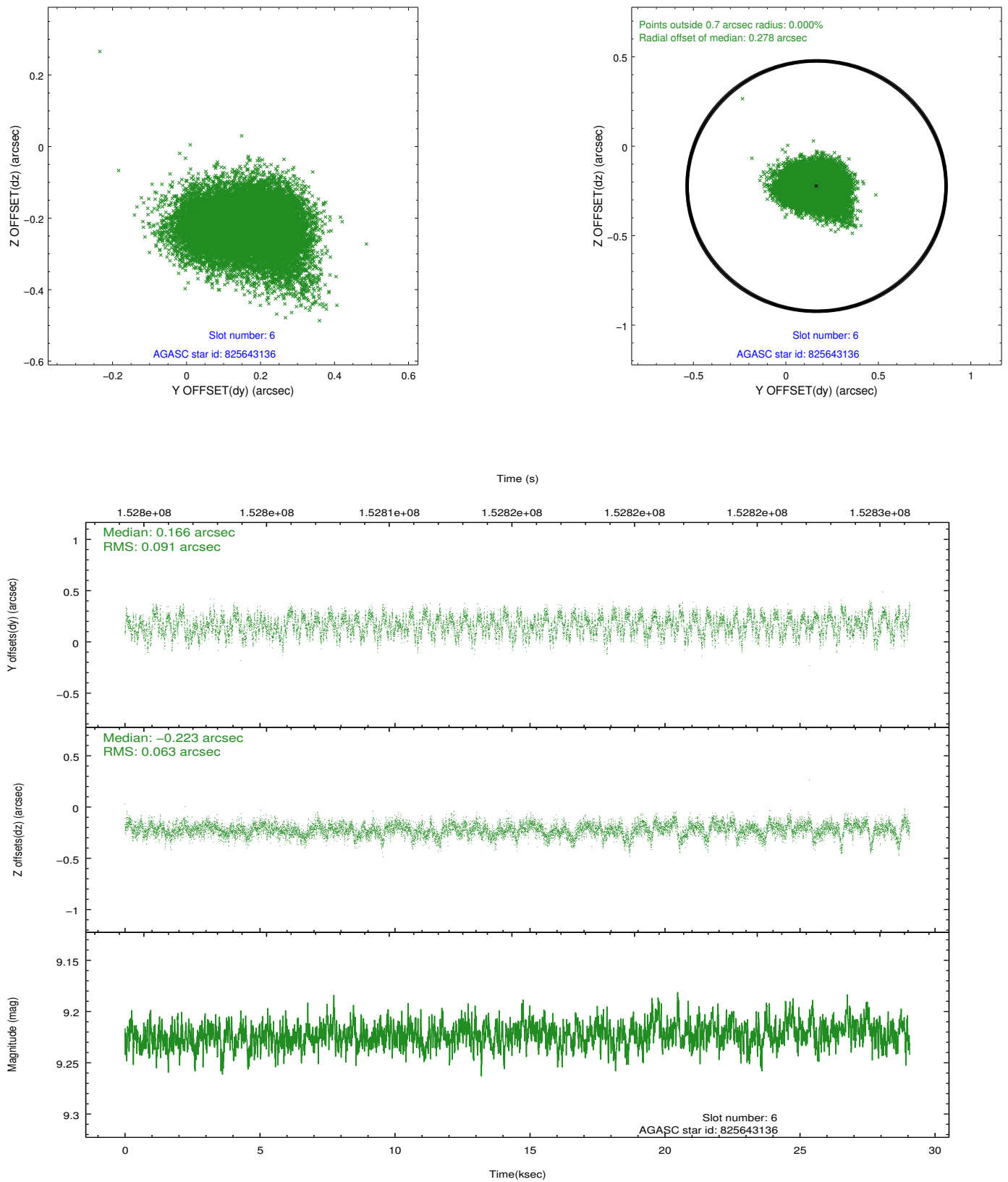
2.4.2 Slot 4



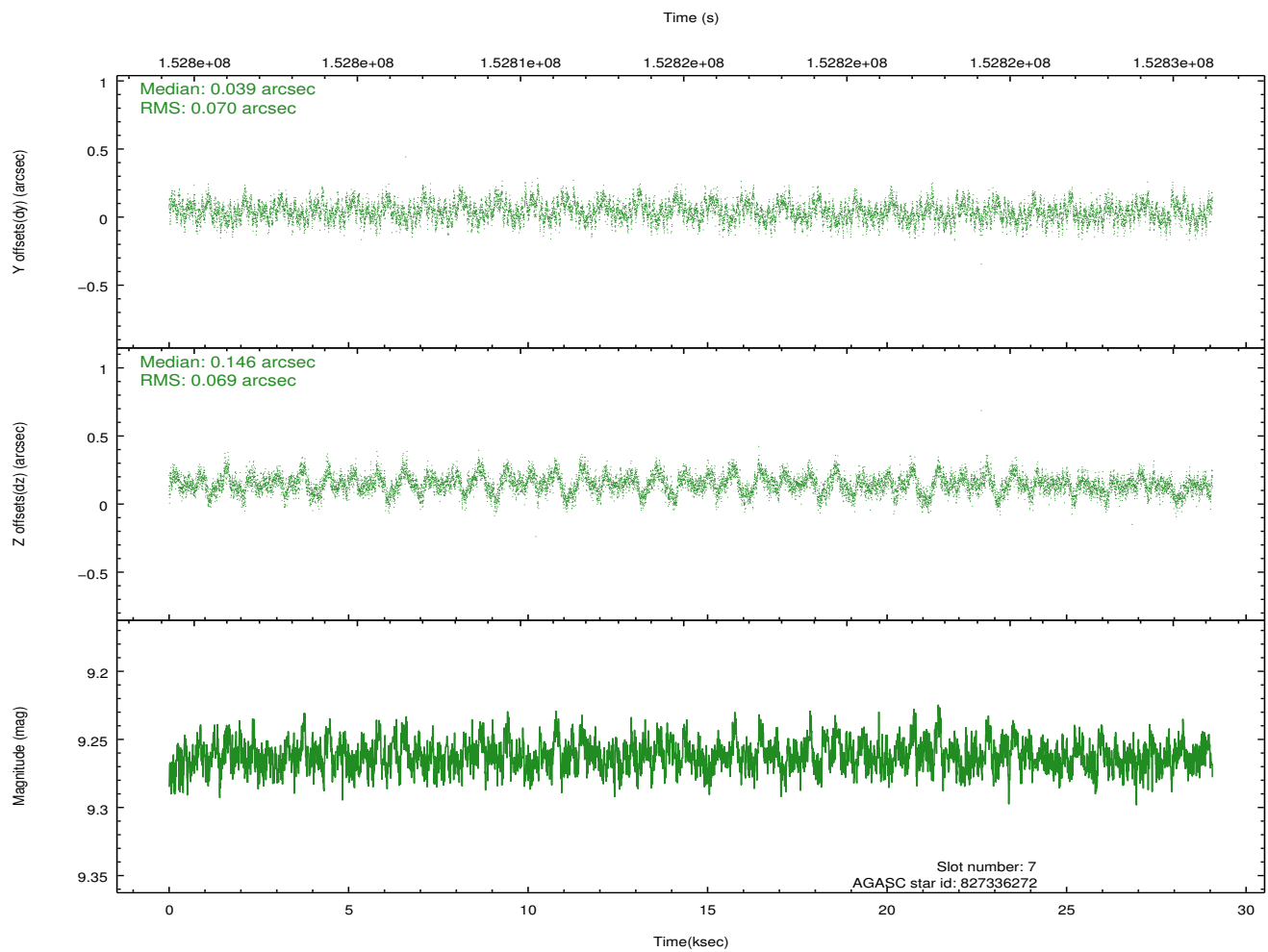
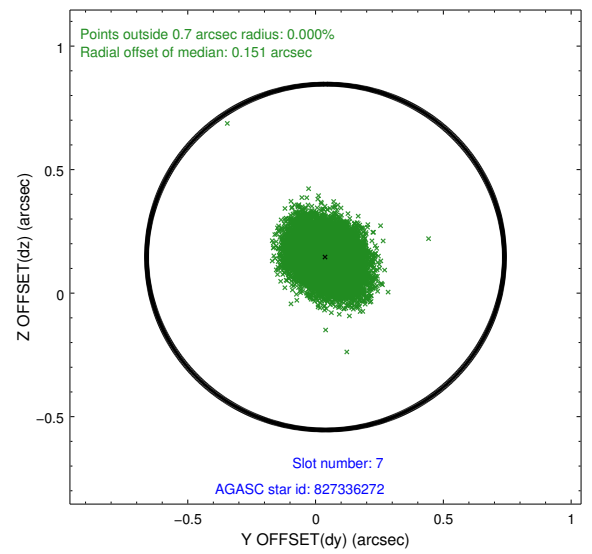
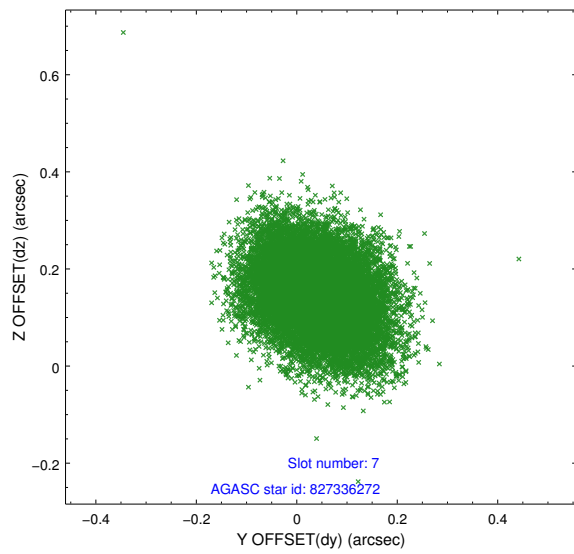
2.4.3 Slot 5



2.4.4 Slot 6

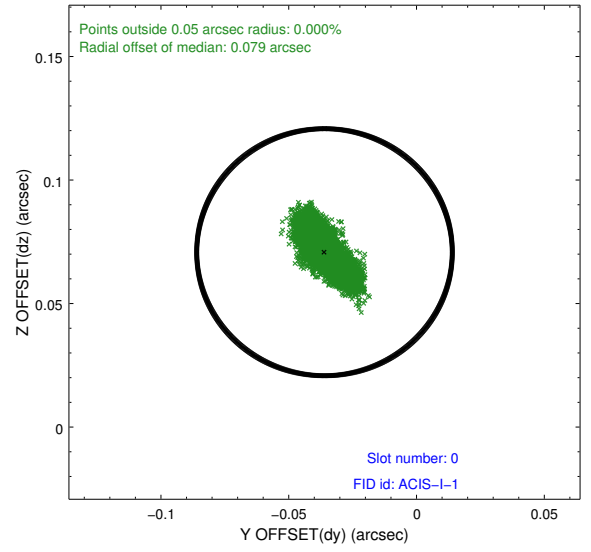
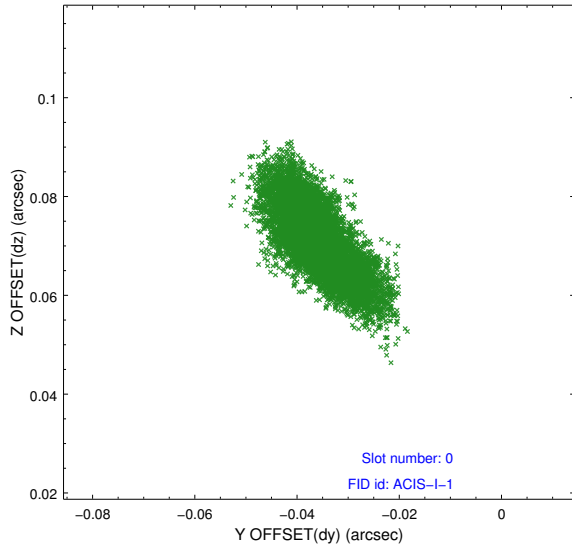


2.4.5 Slot 7

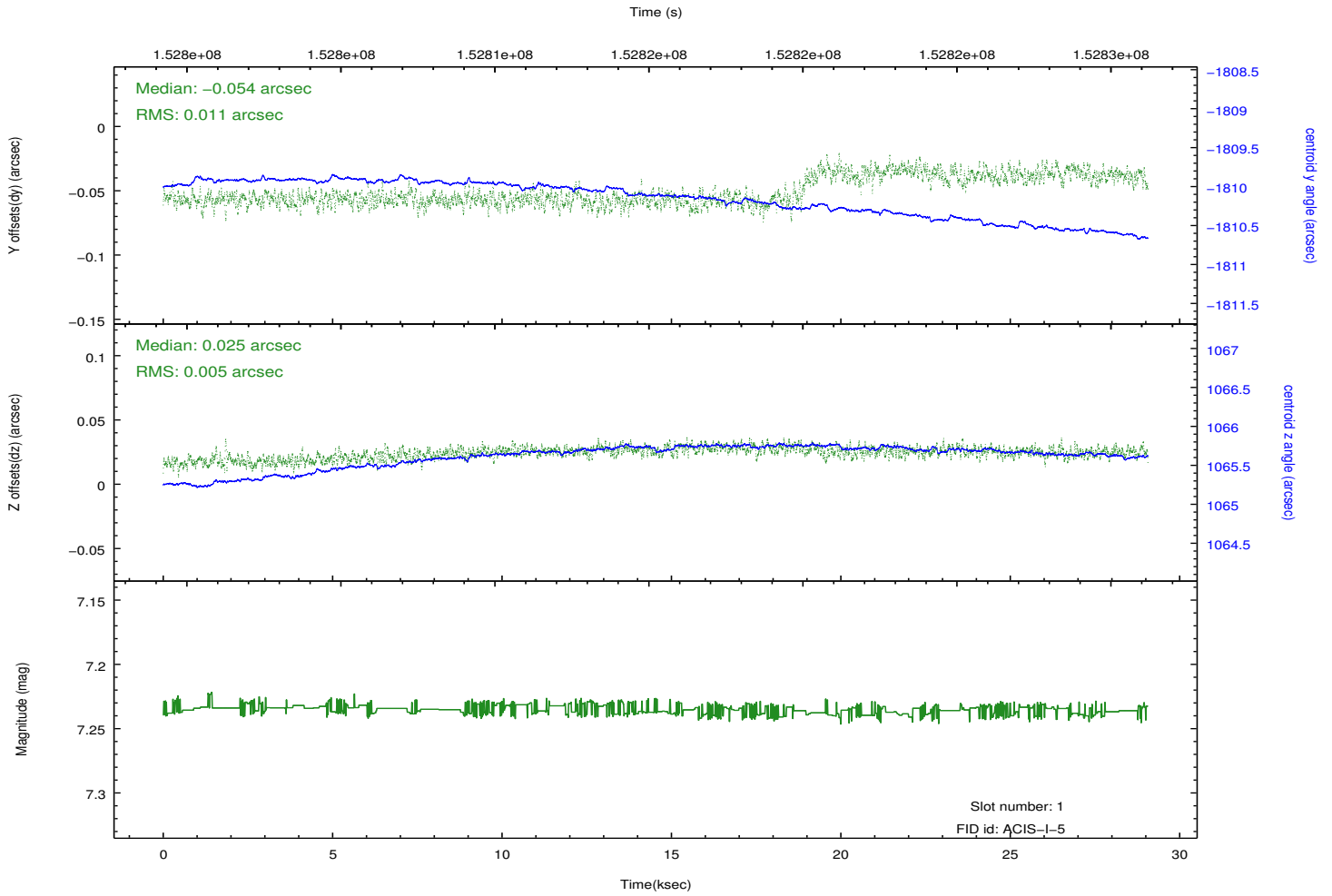
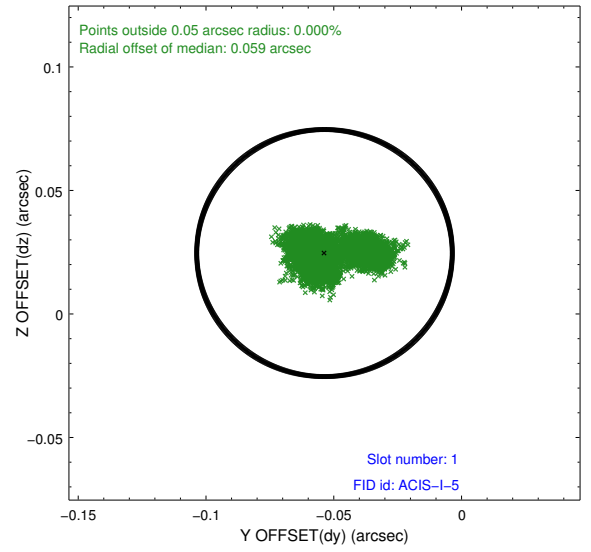
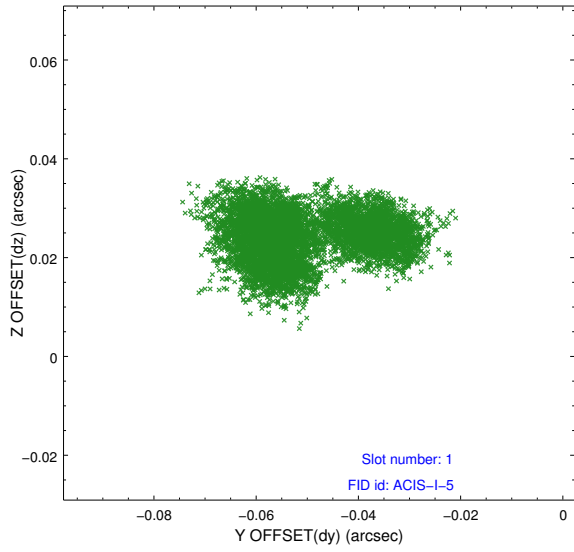


2.5 FID Slots

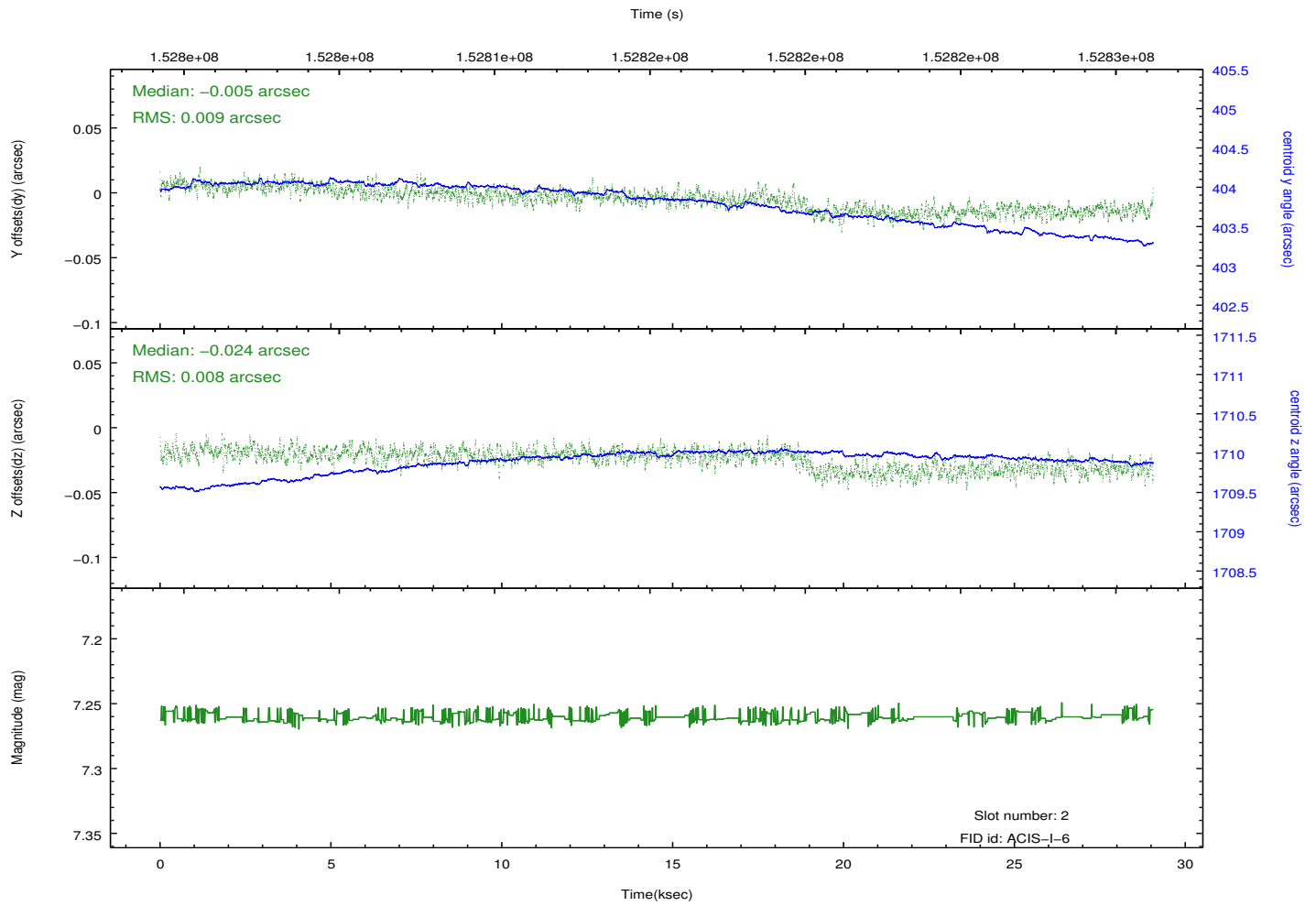
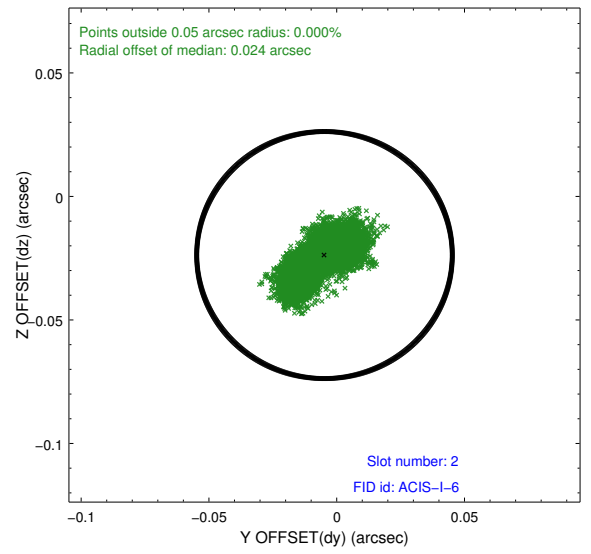
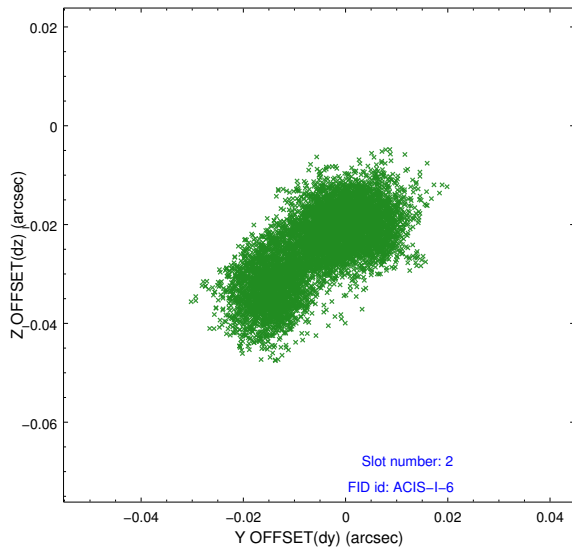
2.5.1 Slot 0



2.5.2 Slot 1



2.5.3 Slot 2



A Summary

A.1 Status

V&V Scientist	Jen Lauer
V&V Date (YYYY-MM-DD)	2012.10.26
V&V Edition	1
V&V Disposition and Status	OK
V&V Charge Time	28.488

A.2 Comments

Some of the numerous x-ray point sources fall on the gap between the nodes of the CCD chips and have been dithered over this gap. Dithering over the node boundary, which has lower sensitivity, can give a false indication of variability.