

V&V Reference Report

L2 ASCDS Version : 8.4.5

Observation 2945 - L2 Version 5
Chandra X-Ray Center

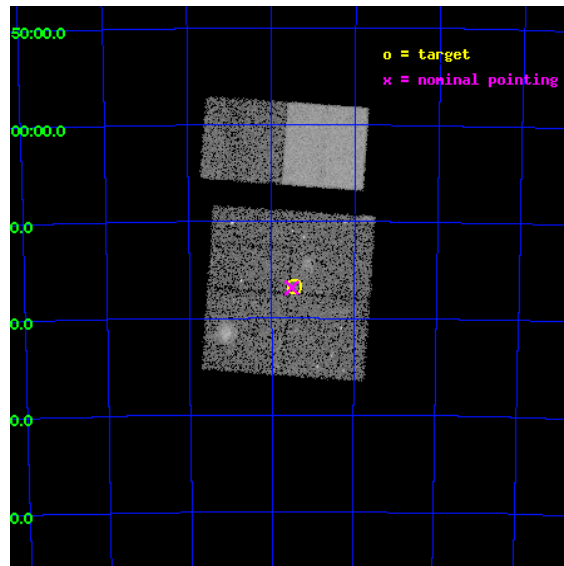
L2 Processing Date : Nov 26 2012

Contents

1	Front	2
2	OBI	3
2.1	OBI	3
2.1.1	Images	3
2.1.2	Bias	3
2.1.3	Parameters	4
2.1.4	Events	4
2.2	Compared Parameters	5
2.3	Aspect	6
2.4	Star Slots	9
2.4.1	Slot 3	9
2.4.2	Slot 4	10
2.4.3	Slot 5	11
2.4.4	Slot 6	12
2.4.5	Slot 7	13
2.5	FID Slots	14
2.5.1	Slot 0	14
2.5.2	Slot 1	15
A	Summary	16
A.1	Status	16
A.2	Comments	16

1 Front

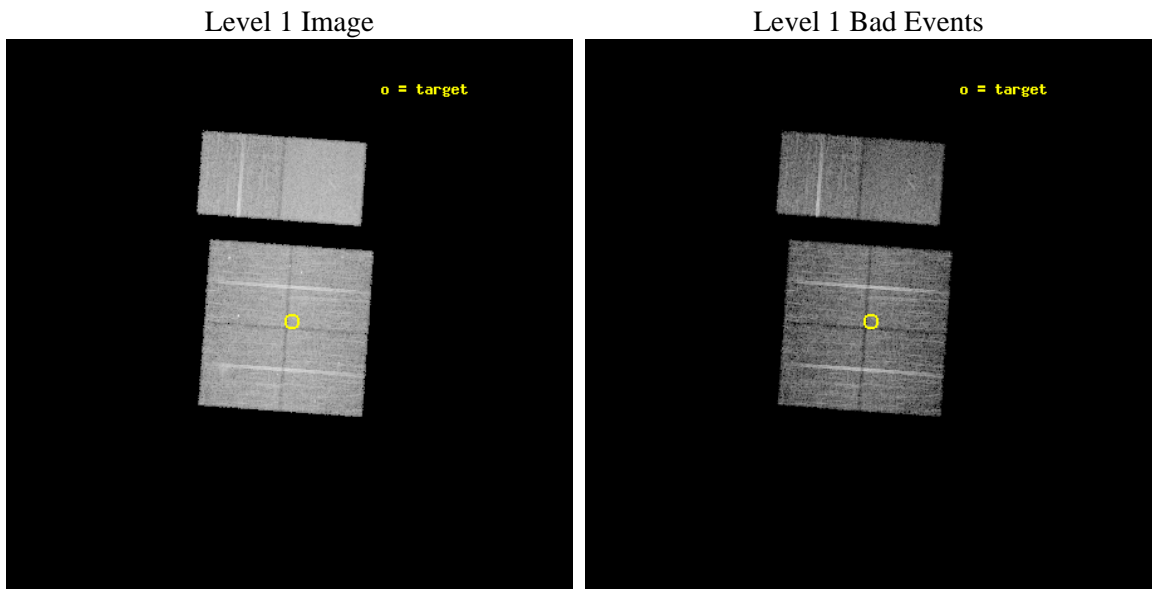
seq_num	600282	Sequence number
obs_id	2945	Observation id
title	A CHANDRA SURVEY OF THE SMC	Proposal title
observer	Dr Andreas Zezas	Principal investigator
object	SMC FIELD 4	Source name
dtcycle	0	
cycle	P	events from which exps? Prim/Second/Both
ra_targ	12.362917	Observer's specified target RA [deg]
dec_targ	-73.279722	Observer's specified target Dec [deg]
ra_nom	12.37809409972	Nominal RA [deg]
dec_nom	-73.281205275517	Nominal Dec [deg]
roll_nom	4.1234895917658	Nominal Roll [deg]
revision	5	Processing version of data
ontime	11752.332053095	Sum of GTIs [s]
livetime	11603.516948234	Livetime [s]
ontime0	11752.208933115	Sum of GTIs [s]
ontime1	11752.249973089	Sum of GTIs [s]
ontime2	11752.291013092	Sum of GTIs [s]
ontime3	11752.332053095	Sum of GTIs [s]
ontime6	11752.414133102	Sum of GTIs [s]
ontime7	11752.373093098	Sum of GTIs [s]
l2events	82531	Number of level 2 events



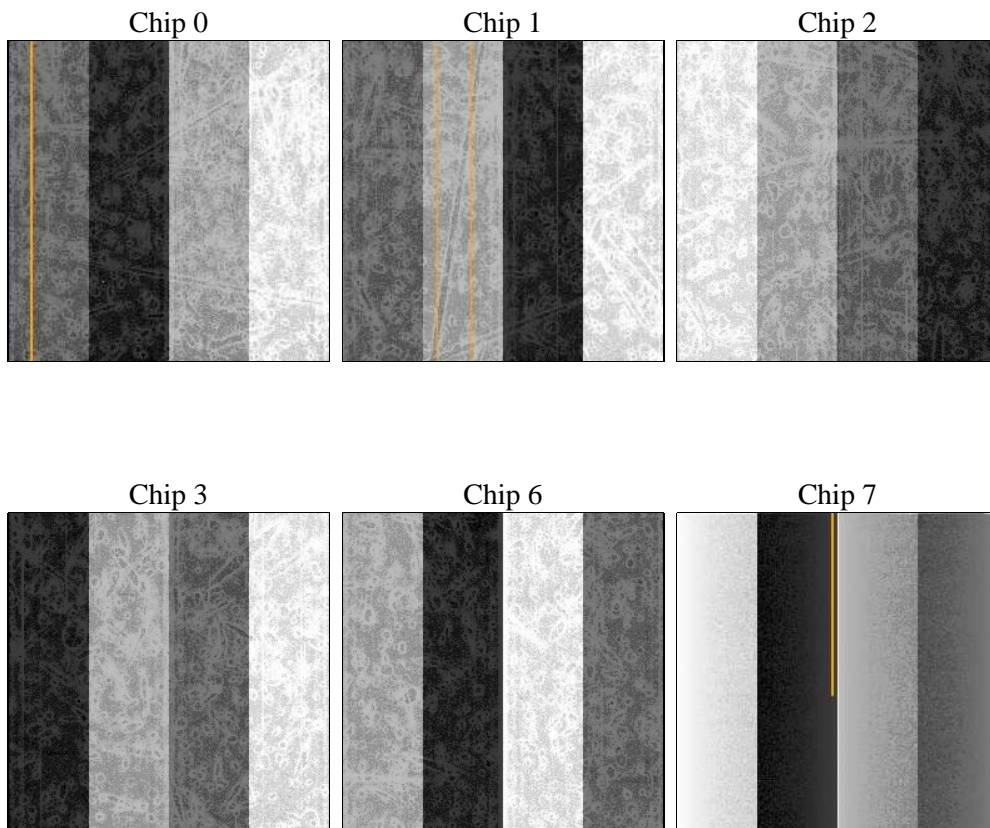
2 OBI

2.1 OBI

2.1.1 Images



2.1.2 Bias



2.1.3 Parameters

obi_num	0	Obi number	sched_exp_time	12000.000000	[s] Scheduled observation exposure time
ascdsver	8.4.5	Processing system revision	ontime	11752.332053095	Sum of GTIs [s]
caldbver	4.5.2	 	ontime0	11752.208933115	Sum of GTIs [s]
date	2012-11-26T15:56:31	Date and time of file creation	ontime1	11752.249973089	Sum of GTIs [s]
revision	5	Processing version of data	ontime2	11752.291013092	Sum of GTIs [s]
			ontime3	11752.332053095	Sum of GTIs [s]
			ontime6	11752.414133102	Sum of GTIs [s]
			ontime7	11752.373093098	Sum of GTIs [s]
			l1events	465659	Number of level 1 events

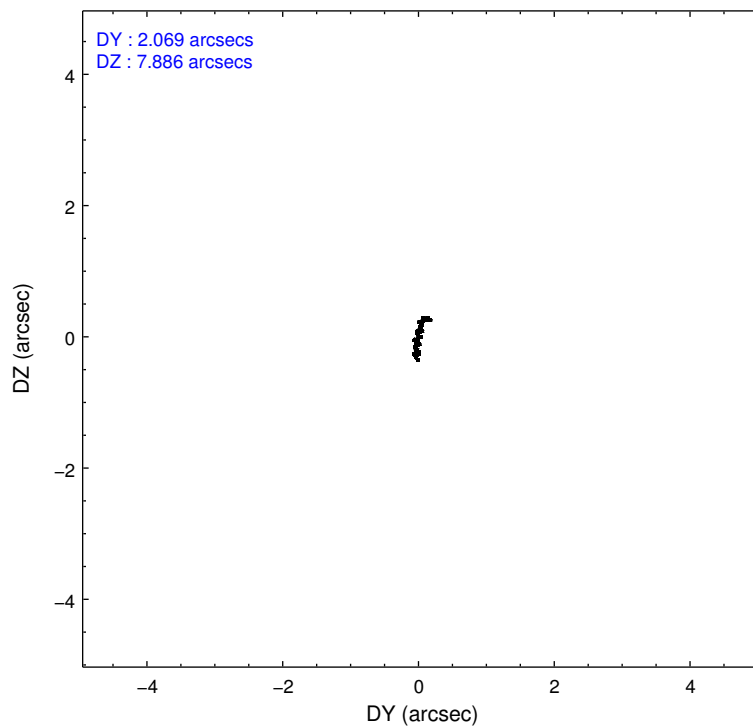
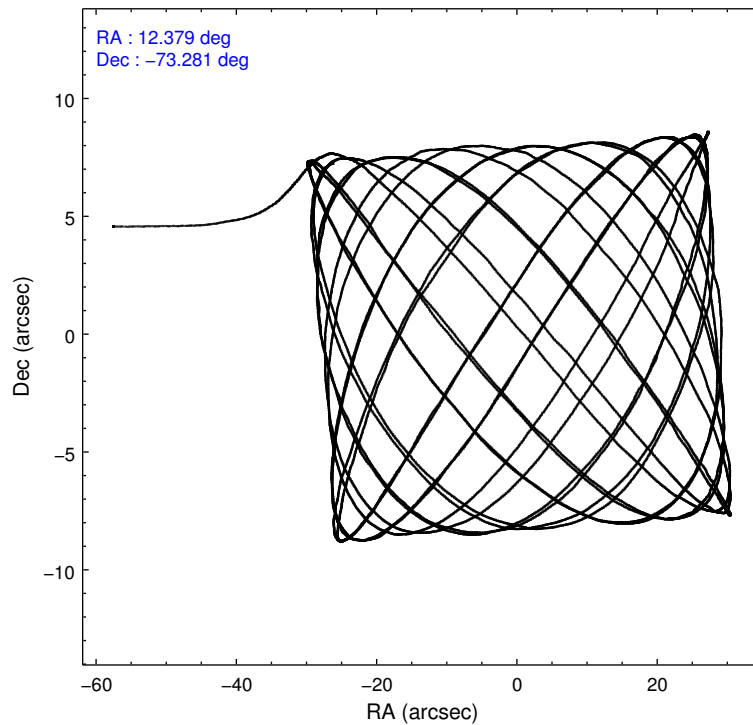
2.1.4 Events

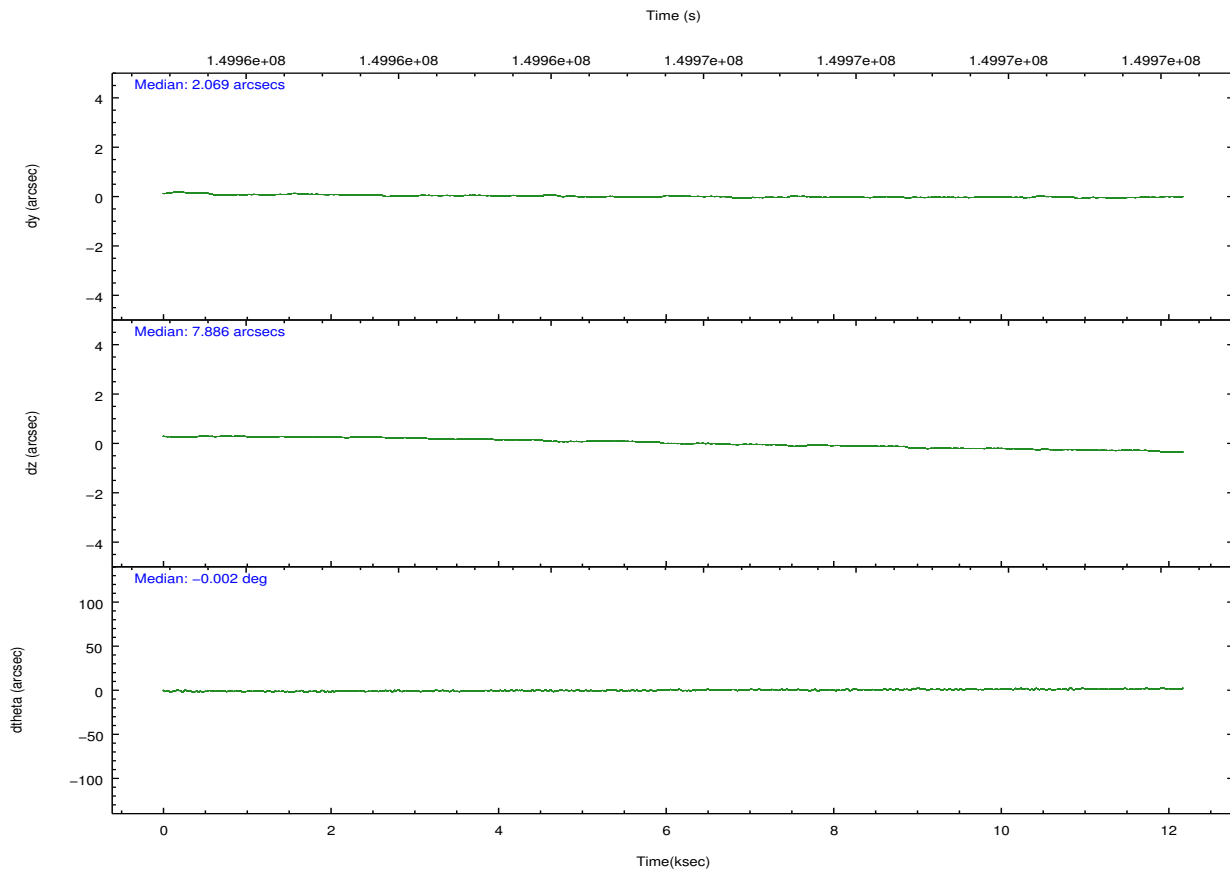
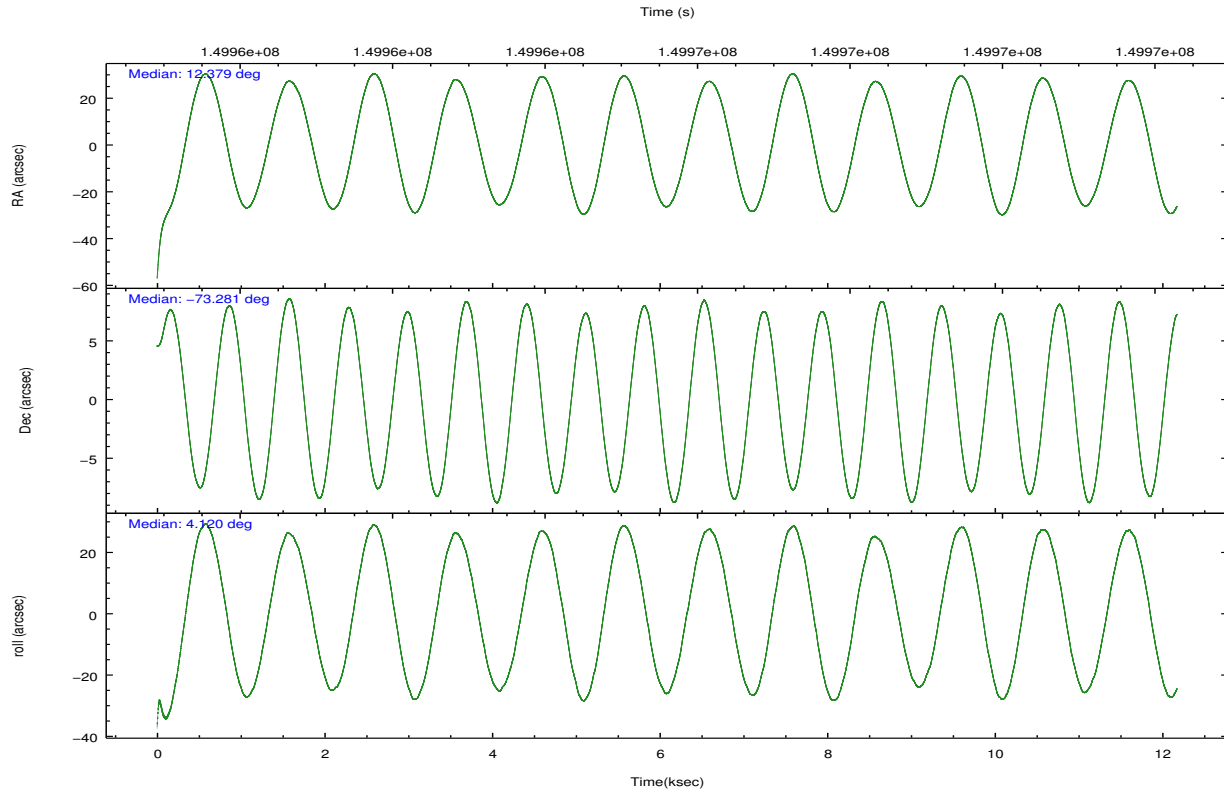
	ccd 0	ccd 1	ccd 2	ccd 3	ccd 6	ccd 7		ccd 0	ccd 1	ccd 2	ccd 3	ccd 6	ccd 7
level 1 events	71033	69762	74488	75138	76095	99143	grade 0 events	5580	4170	4595	4566	3560	3747
rejected events	60122	59931	65059	65609	67220	57926		7%	5%	6%	6%	4%	3%
rejected %	84%	85%	87%	87%	88%	58%	grade 1 events	43	48	47	36	33	90
								0%	0%	0%	0%	0%	0%
							grade 2 events	1958	1992	1729	1768	1810	8004
								2%	2%	2%	2%	2%	8%
							grade 3 events	948	989	873	862	857	3716
								1%	1%	1%	1%	1%	3%
							grade 4 events	845	932	861	863	873	3580
								1%	1%	1%	1%	1%	3%
							grade 5 events	2885	3052	2862	3194	3510	9335
								4%	4%	3%	4%	4%	9%
							grade 6 events	1584	1752	1375	1476	1780	22188
								2%	2%	1%	1%	2%	22%
							grade 7 events	57190	56827	62146	62373	63672	48483
								80%	81%	83%	83%	83%	48%

2.2 Compared Parameters

Parameter	Planned	Actual	Parameter	Planned	Actual
Instrument	ACIS	ACIS	Obspar format version number	7	7
Detector	ACIS-012367	ACIS-012367	Obspar file type	PREDICTED	ACTUAL
Grating	NONE	NONE	Obspar update status	NONE	UPDATED
Data mode	FAINT	FAINT	Number of optional ACIS chips dropped	0	0
Observation mode	POINTING	POINTING	On-chip summing requested	N	N
[deg] Pointing RA	12.299527	12.37809409972033	Subarray requested	NONE	NONE
[deg] Pointing Dec	-73.296676	-73.28120527551675	Alternating exposures requested	N	N
[deg] Pointing Roll	3.839529	4.123489591765826	[s] Primary exposure time	0.000000	3.2
[mm] SIM focus pos	-0.782348	-0.7809083437167272			
[mm] SIM defocus	0	0.001439871863259334			
[mm] SIM translation stage pos	-233.592463	-233.5874344608287			
[mm] SIM translation stage offset	0	-0.005018542100998502			
[s] Observation start time (MET)	149959688.184000	149958814.40485			
Observation start date	2002-10-02T15:27:04	2002-10-02T15:13:34			
[s] Observation end time (MET)	149971688.184000	149971870.85539			
Observation end date	2002-10-02T18:47:04	2002-10-02T18:51:10			
Read mode	TIMED	TIMED			

2.3 Aspect



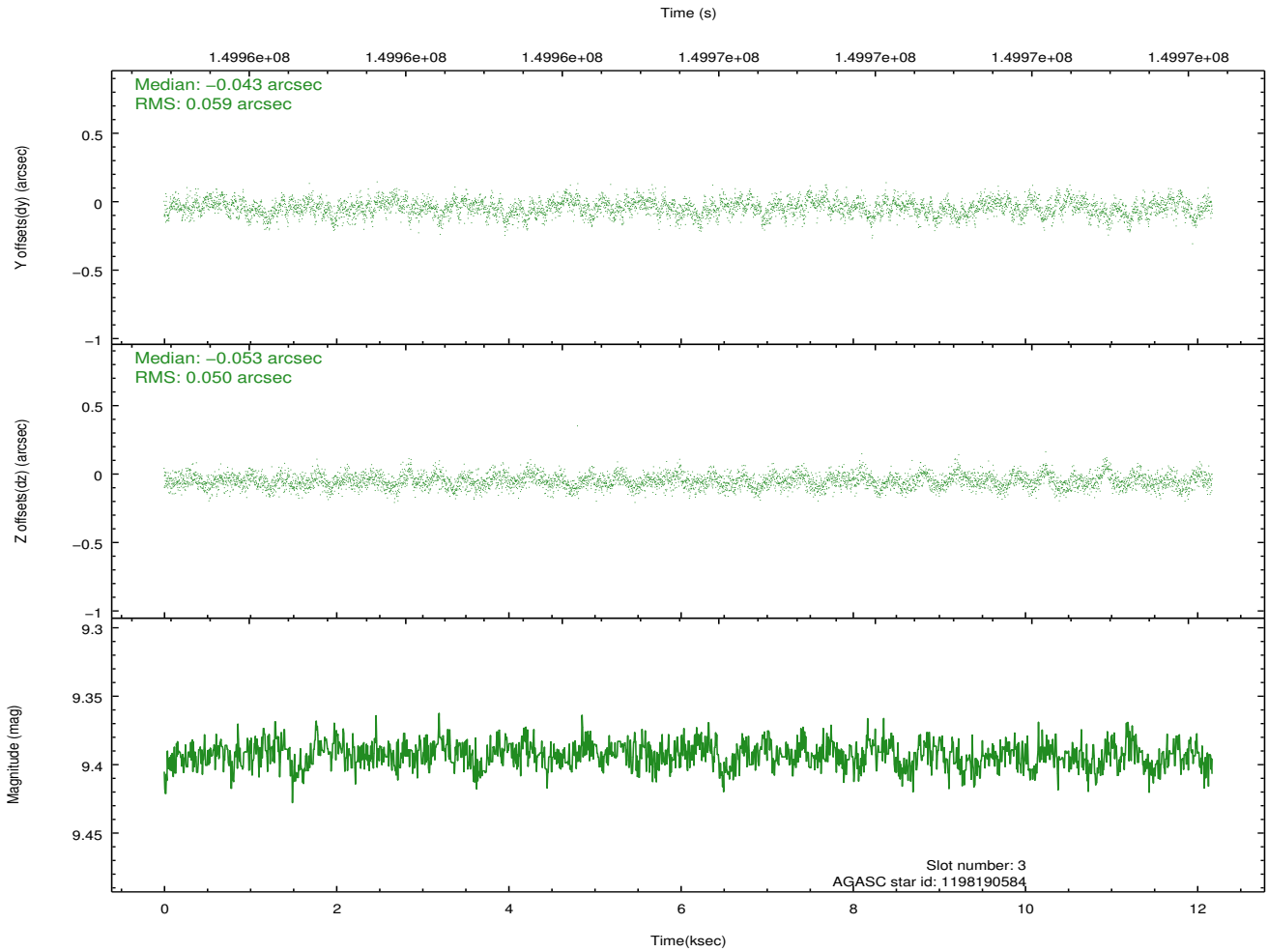
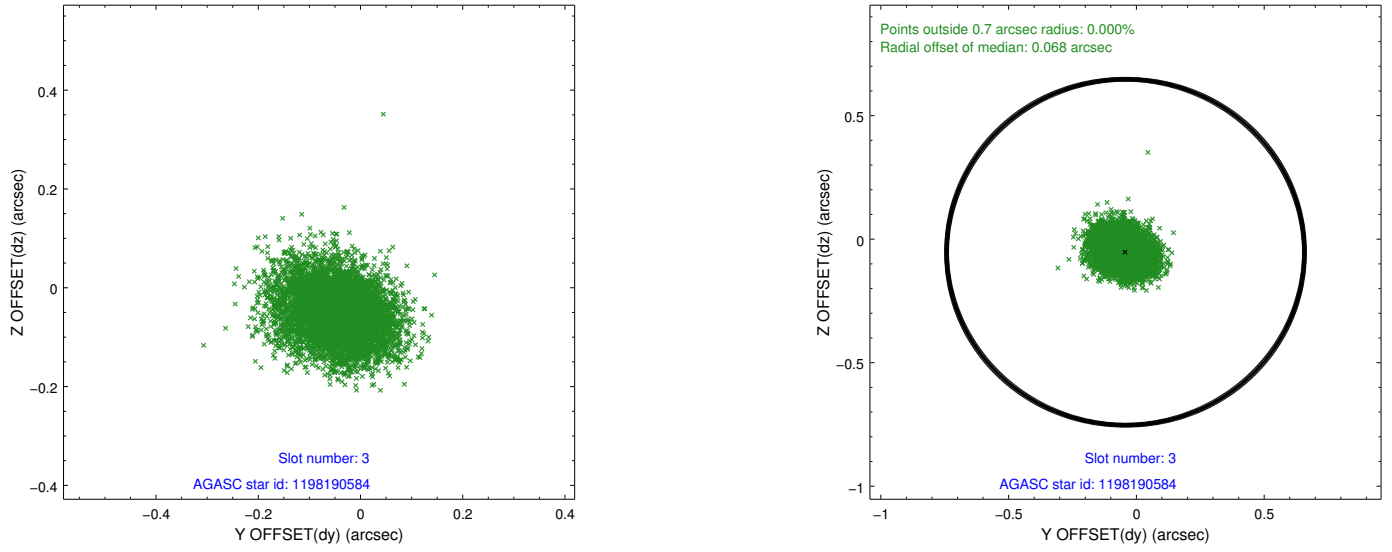


Slot Statistics

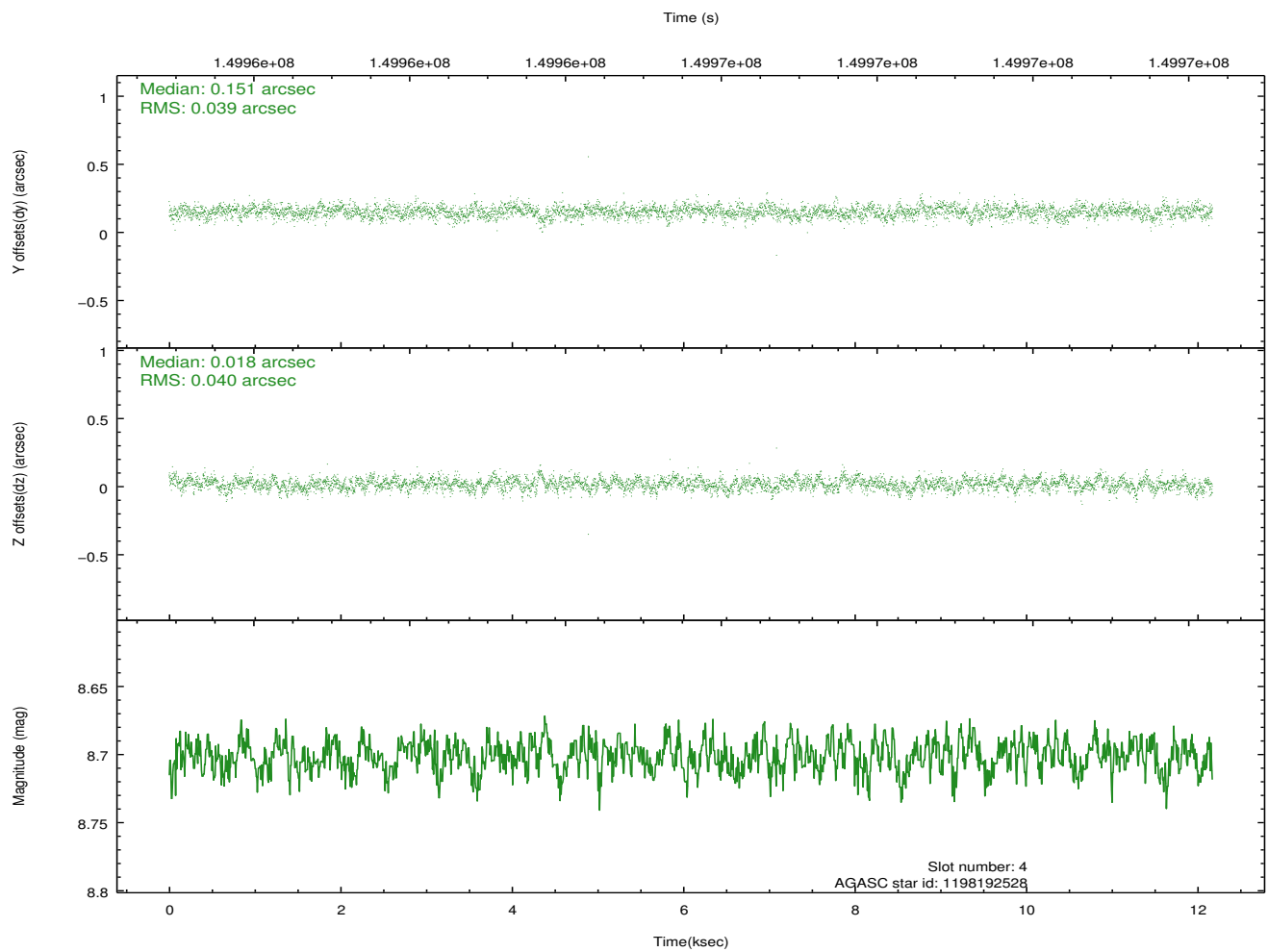
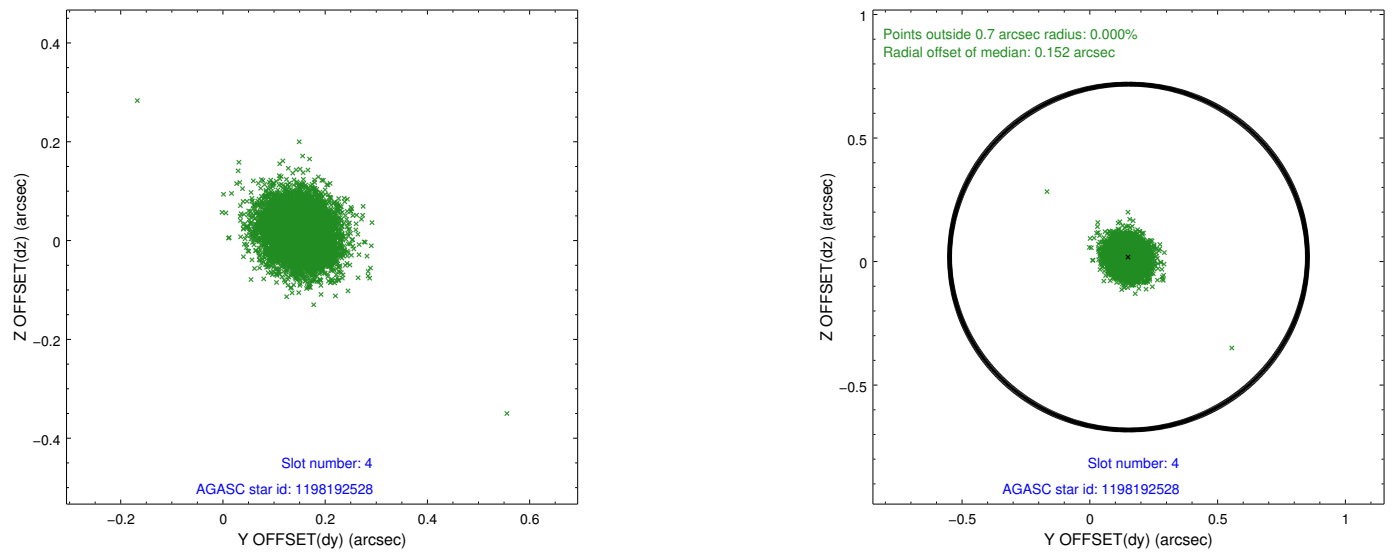
slot	status	id	mag	n_pts	med_dy	med_dz	dr1	dr2	ra	dec	mean_y	mean_z
0	FID	ACIS-I-1	7.25	2969	-0.025	0.022	0.009	0.015	0.000000	0.000000	937.70	-831.30
1	FID	ACIS-I-5	7.24	2969	-0.035	0.028	0.009	0.015	0.000000	0.000000	-1810.18	1066.01
2	OMITTED		0.00	0	0.000	0.000	0.000	0.000	0.000000	0.000000	0.00	0.00
3	GUIDE	1198190584	9.39	5936	-0.043	-0.053	0.081	0.135	13.276396	-73.109281	1063.45	596.69
4	GUIDE	1198192528	8.70	5936	0.151	0.018	0.058	0.095	14.199975	-73.067922	2040.53	657.28
5	GUIDE	1198179952	8.73	5937	-0.032	0.021	0.069	0.109	10.482470	-73.680681	-1928.25	-1283.90
6	GUIDE	1198190664	9.26	5933	-0.008	0.066	0.088	0.154	14.057016	-73.825958	1628.38	-2044.90
7	GUIDE	1198192088	9.22	5933	-0.070	-0.050	0.068	0.113	11.250657	-73.229216	-1071.73	305.53

2.4 Star Slots

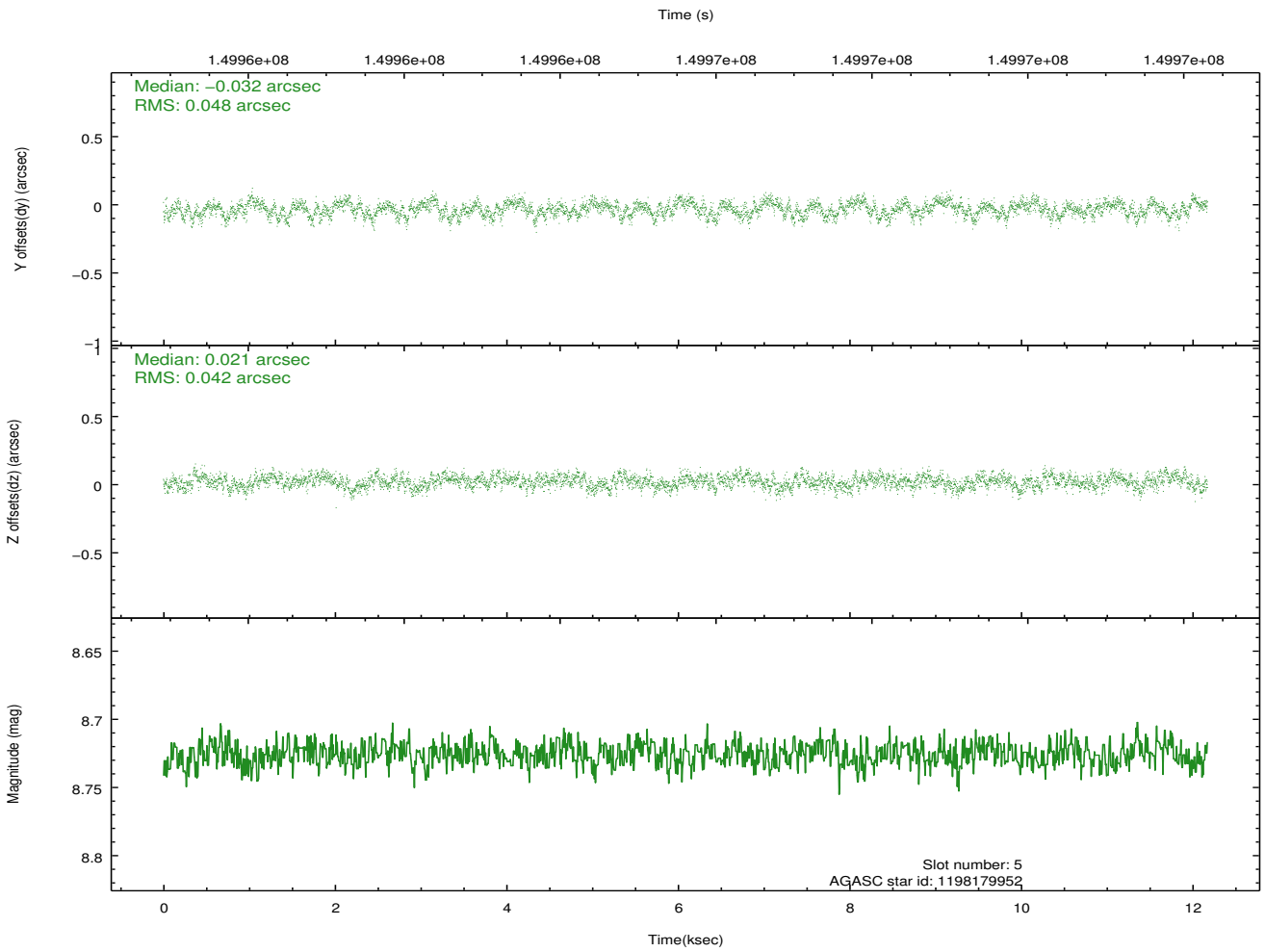
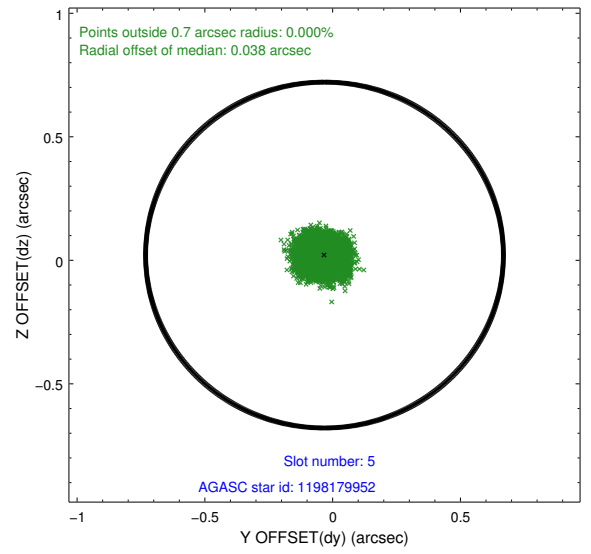
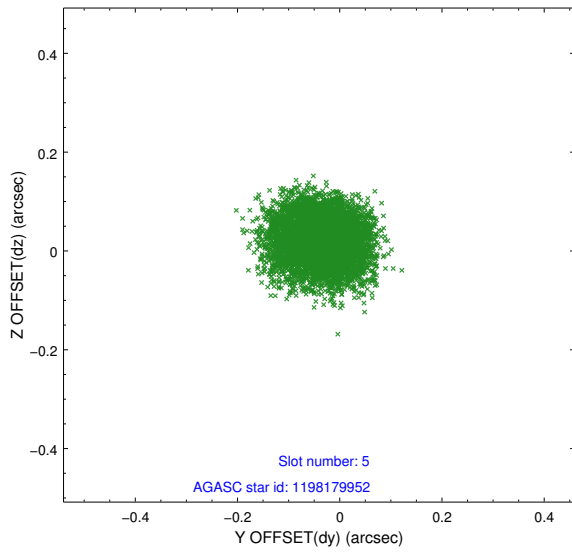
2.4.1 Slot 3



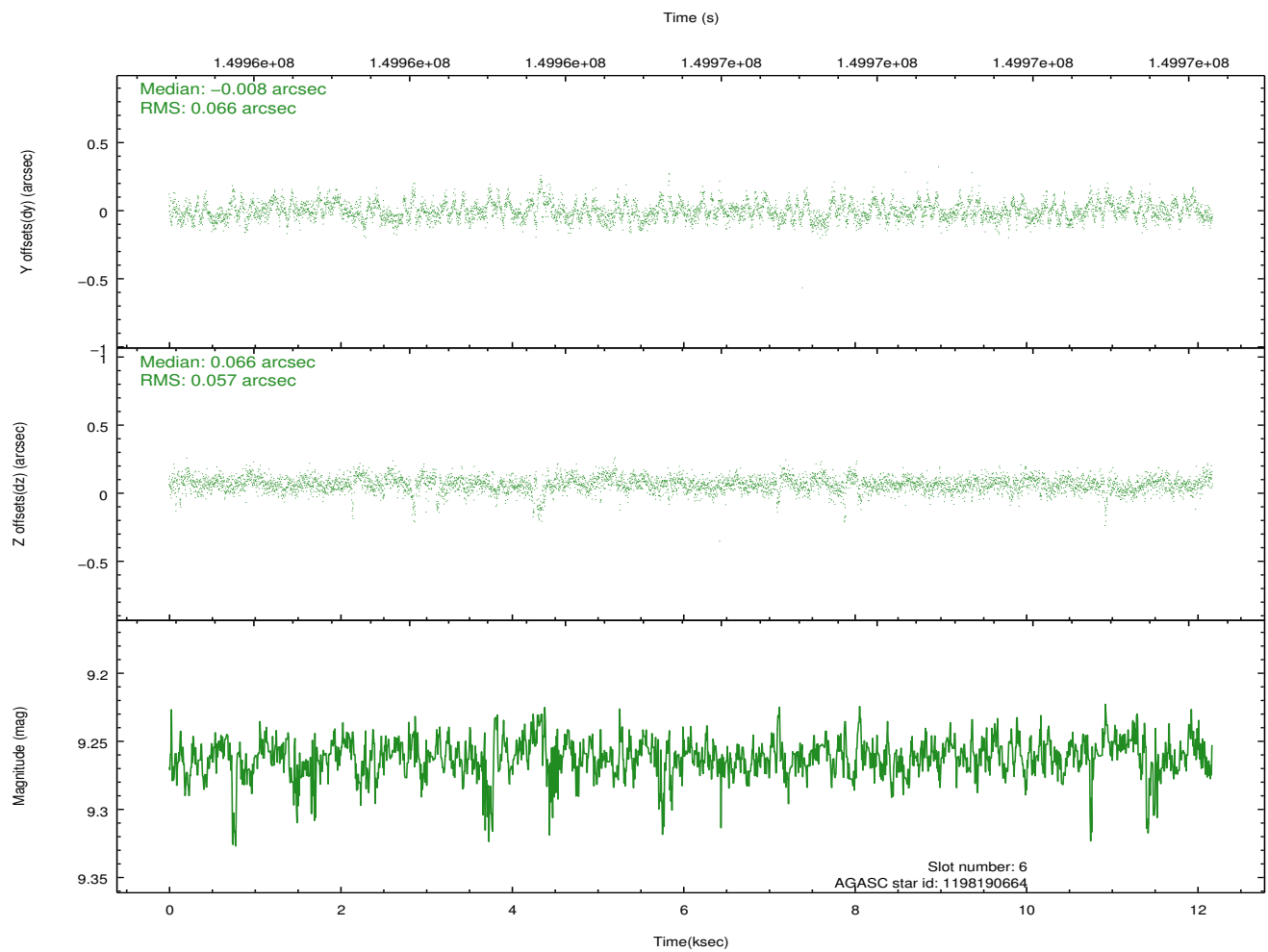
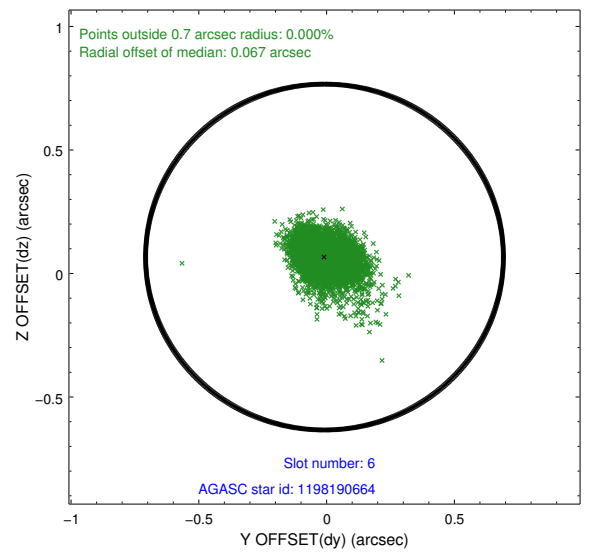
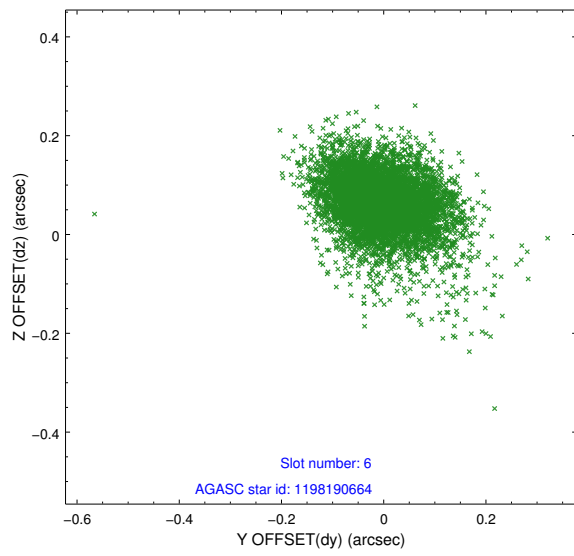
2.4.2 Slot 4



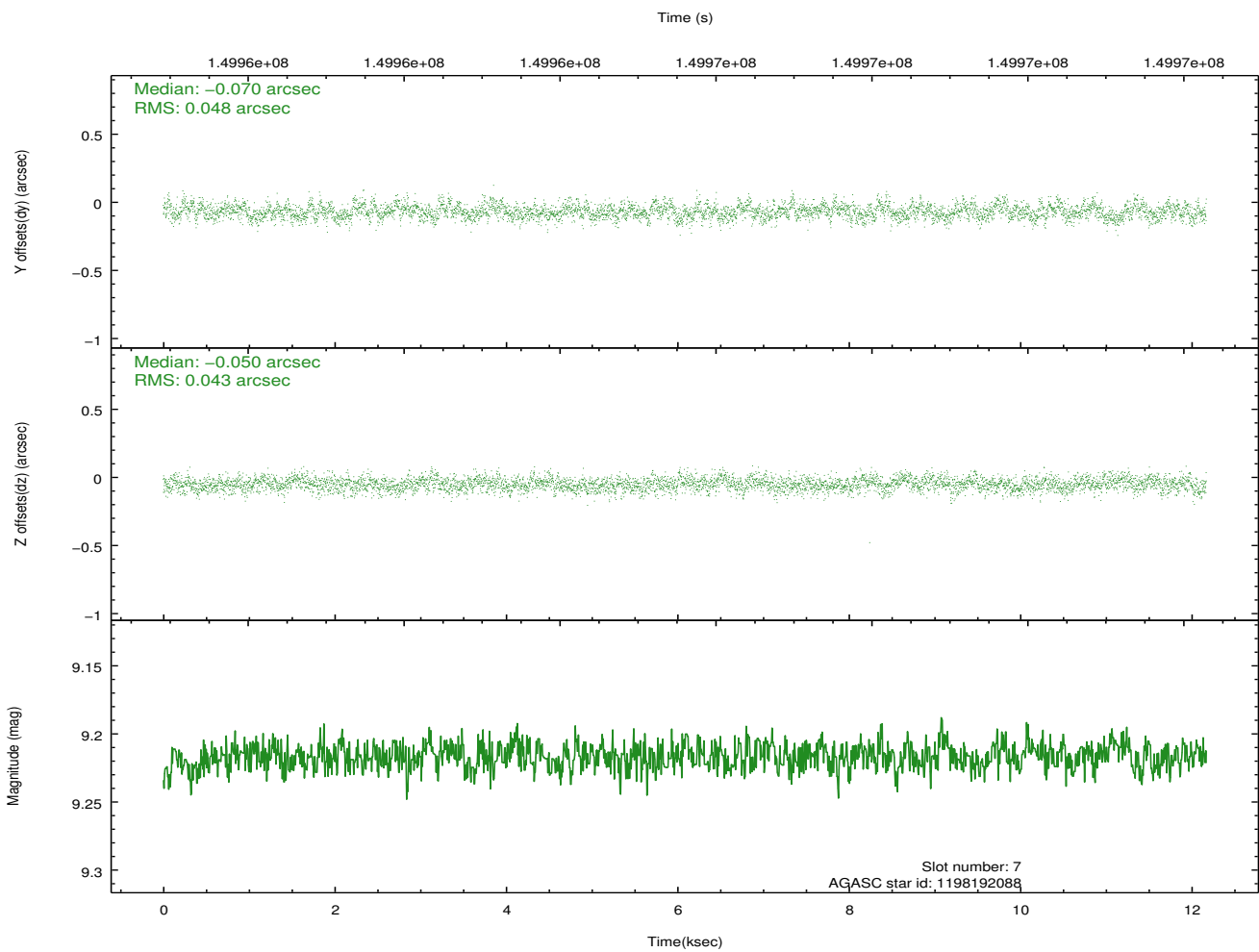
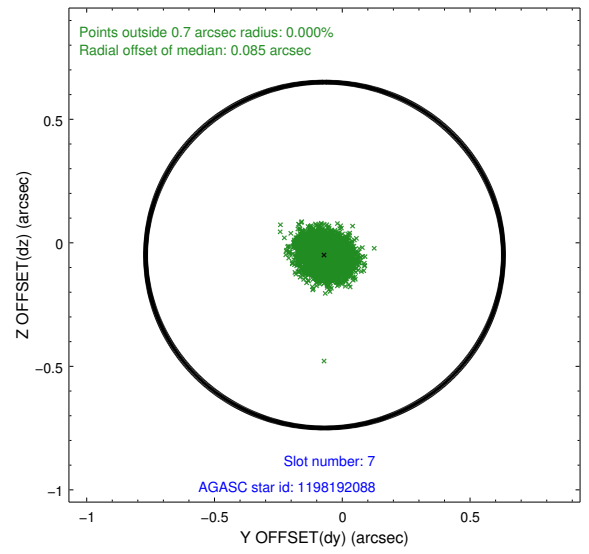
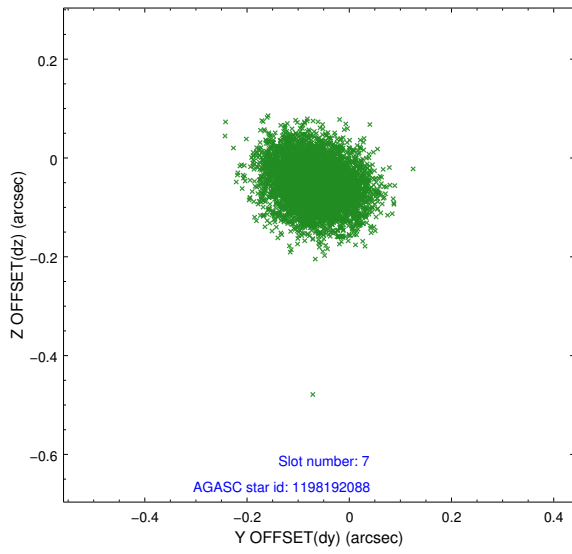
2.4.3 Slot 5



2.4.4 Slot 6

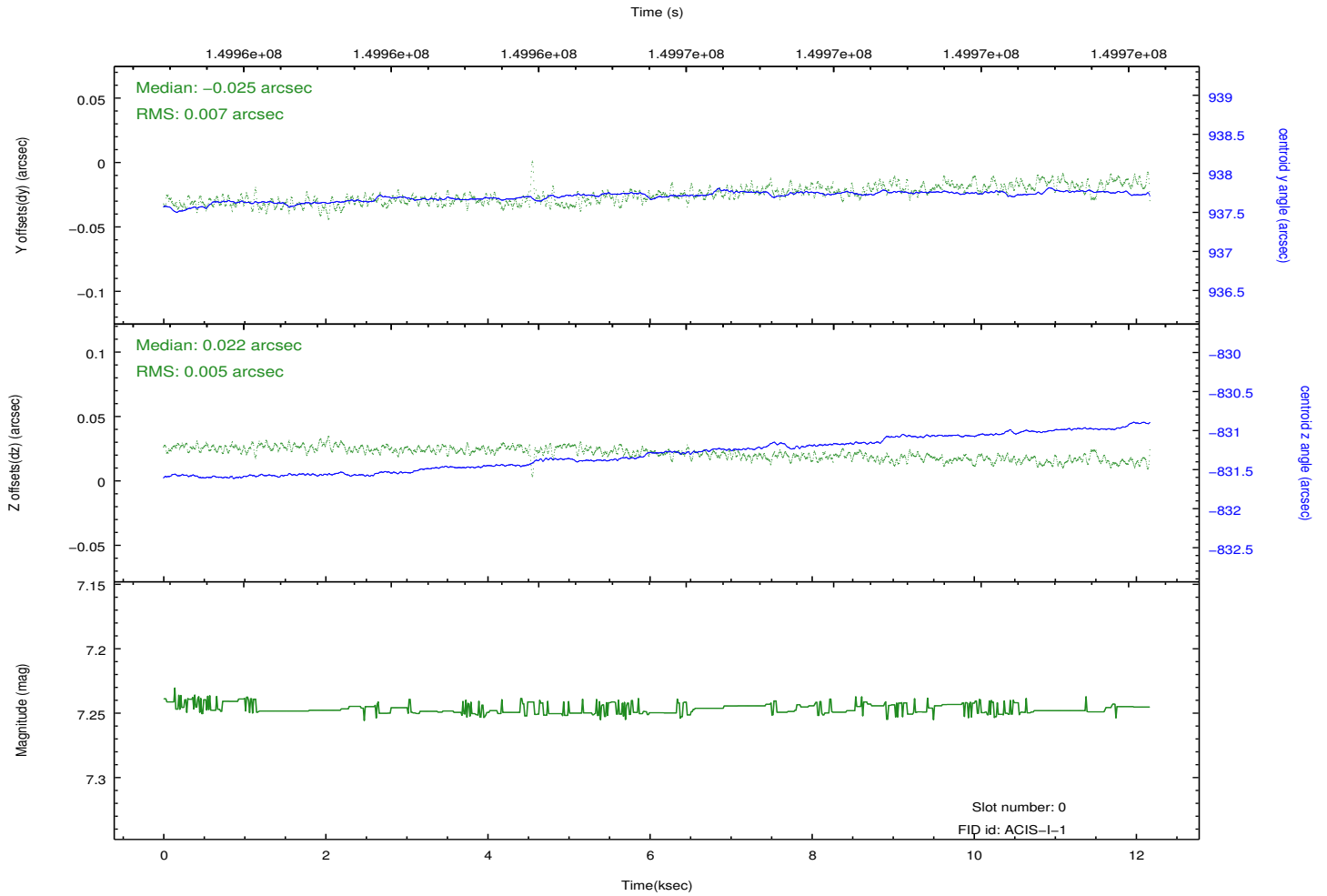
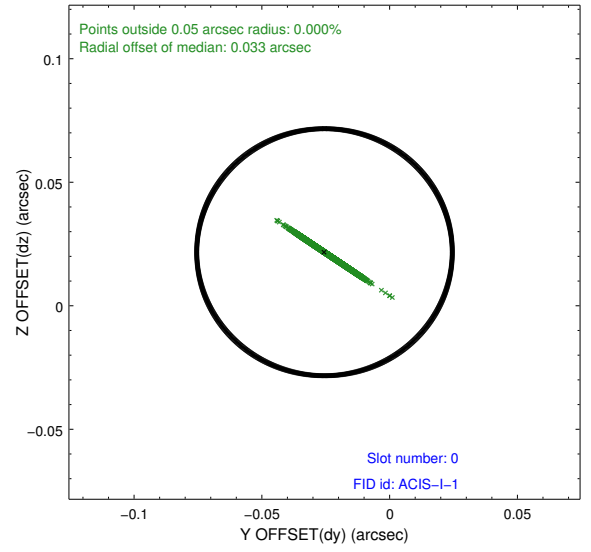
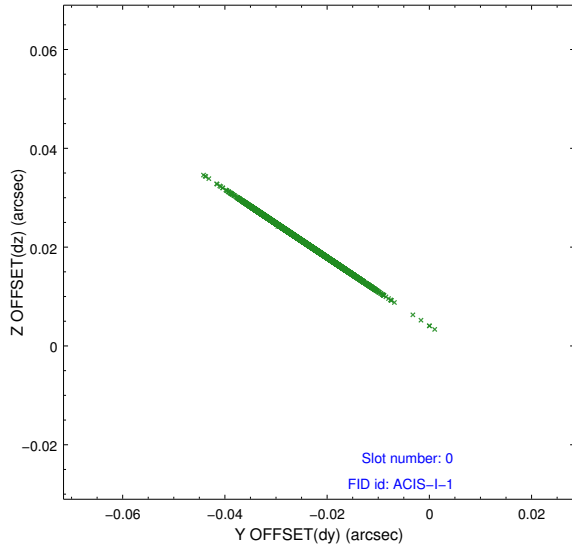


2.4.5 Slot 7

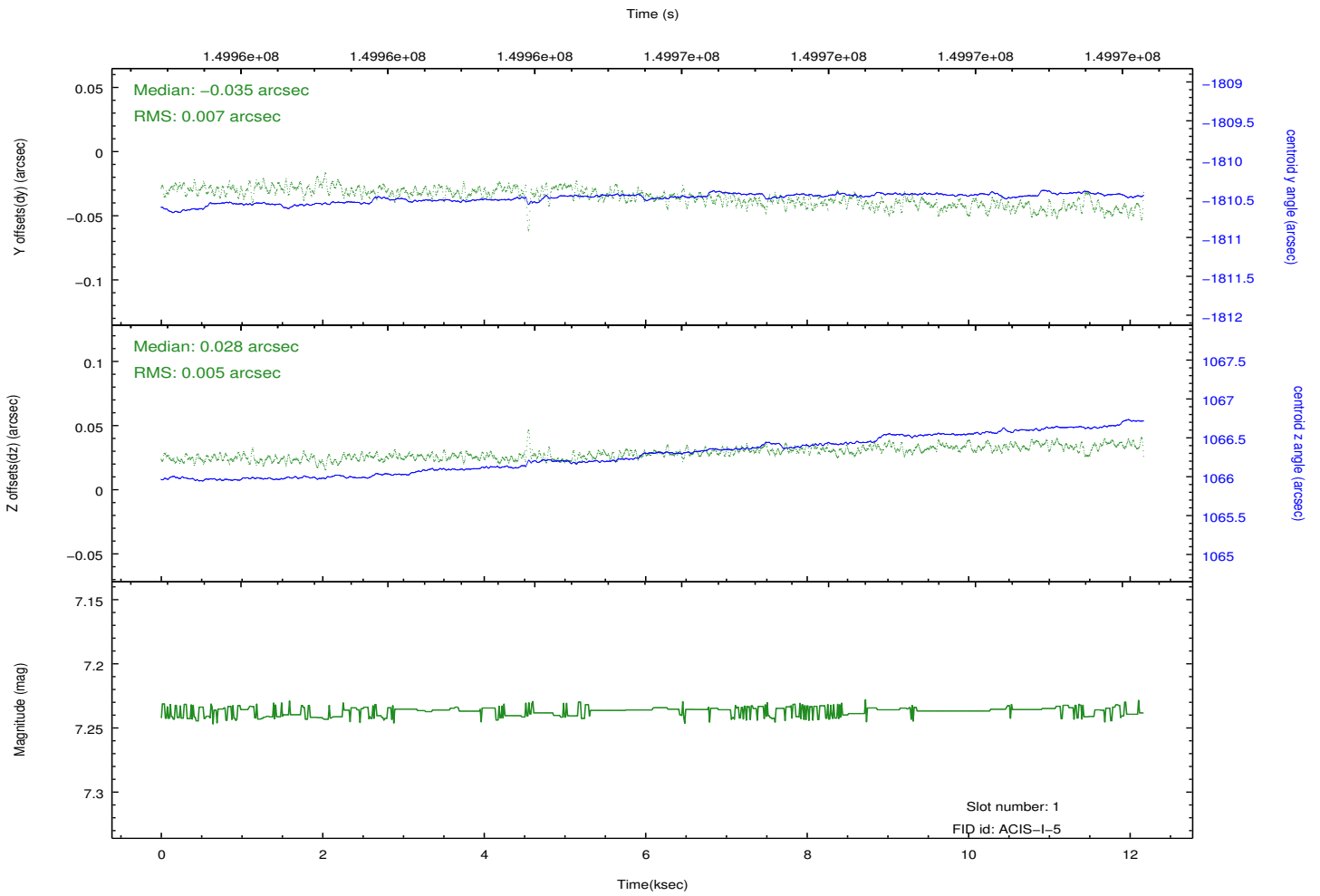
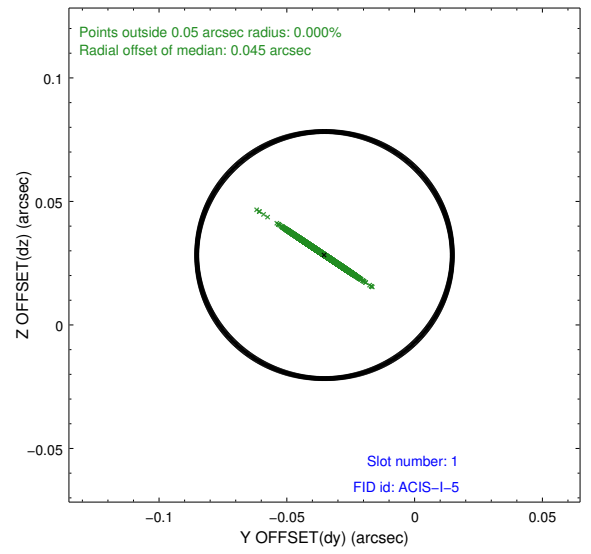
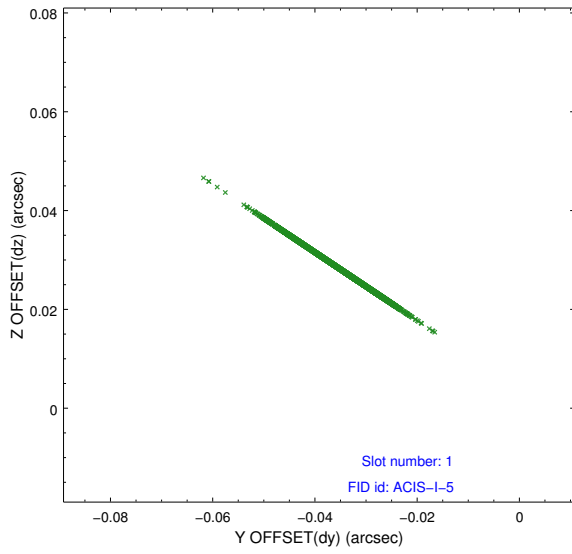


2.5 FID Slots

2.5.1 Slot 0



2.5.2 Slot 1



A Summary

A.1 Status

V&V Scientist	Beth Sundheim
V&V Date (YYYY-MM-DD)	2012.11.29
V&V Edition	1
V&V Disposition and Status	OK
V&V Charge Time	11.753

A.2 Comments

The fid light in slot 2 was removed from the aspect solution due to poor data quality. The aspect solution is improved by the removal of this fid light from the solution.