

V&V Reference Report

L2 ASCDS Version : 8.4.5

Observation 2965 - L2 Version 3
Chandra X-Ray Center

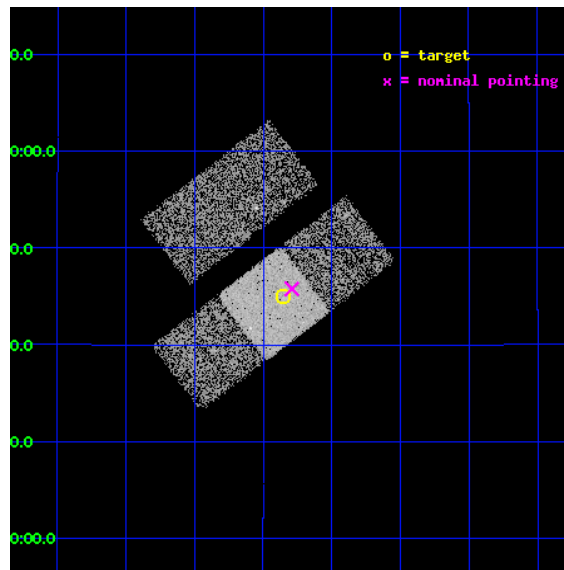
L2 Processing Date : Oct 13 2012

Contents

1	Front	2
2	OBI	3
2.1	OBI	3
2.1.1	Images	3
2.1.2	Bias	3
2.1.3	Parameters	4
2.1.4	Events	4
2.2	Compared Parameters	5
2.3	Aspect	6
2.4	Star Slots	9
2.4.1	Slot 3	9
2.4.2	Slot 4	10
2.4.3	Slot 5	11
2.4.4	Slot 6	12
2.4.5	Slot 7	13
2.5	FID Slots	14
2.5.1	Slot 0	14
2.5.2	Slot 1	15
2.5.3	Slot 2	16
A	Summary	17
A.1	Status	17
A.2	Comments	17

1 Front

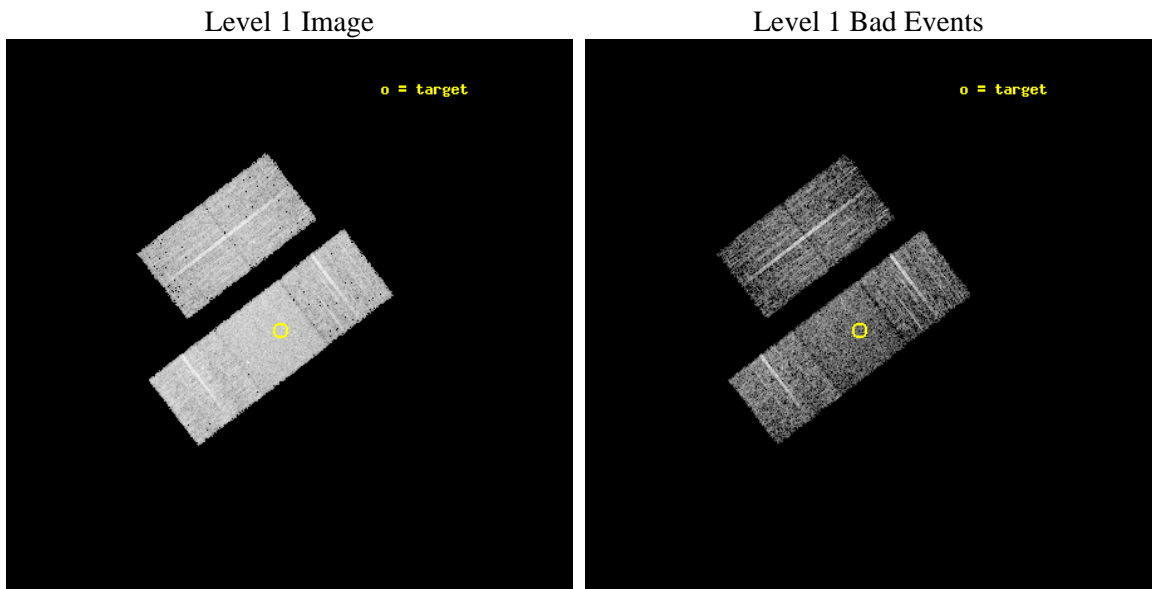
seq_num	700404	Sequence number
obs_id	2965	Observation id
title	A SNAPSHOT SURVEY OF THE OPTICALLY SELECTED TYPE-2 QUASARS	Proposa
observer	PROF. S. DJORGOVSKI	Principal investigator
object	PSS 2311+1644	Source name
dtcycle	0	
cycle	P	events from which exps? Prim/Second/Both
ra_targ	347.96375	Observer's specified target RA [deg]
dec_targ	16.749167	Observer's specified target Dec [deg]
ra_nom	347.94765165586	Nominal RA [deg]
dec_nom	16.763106906566	Nominal Dec [deg]
roll_nom	142.55969158432	Nominal Roll [deg]
revision	3	Processing version of data
ontime	5105.6999901533	Sum of GTIs [s]
livetime	5038.9902610203	Livetime [s]
ontime2	5105.6999901533	Sum of GTIs [s]
ontime3	5105.6999901533	Sum of GTIs [s]
ontime6	5105.6999901533	Sum of GTIs [s]
ontime7	5105.6999901533	Sum of GTIs [s]
ontime8	5105.6999901533	Sum of GTIs [s]
l2events	33548	Number of level 2 events



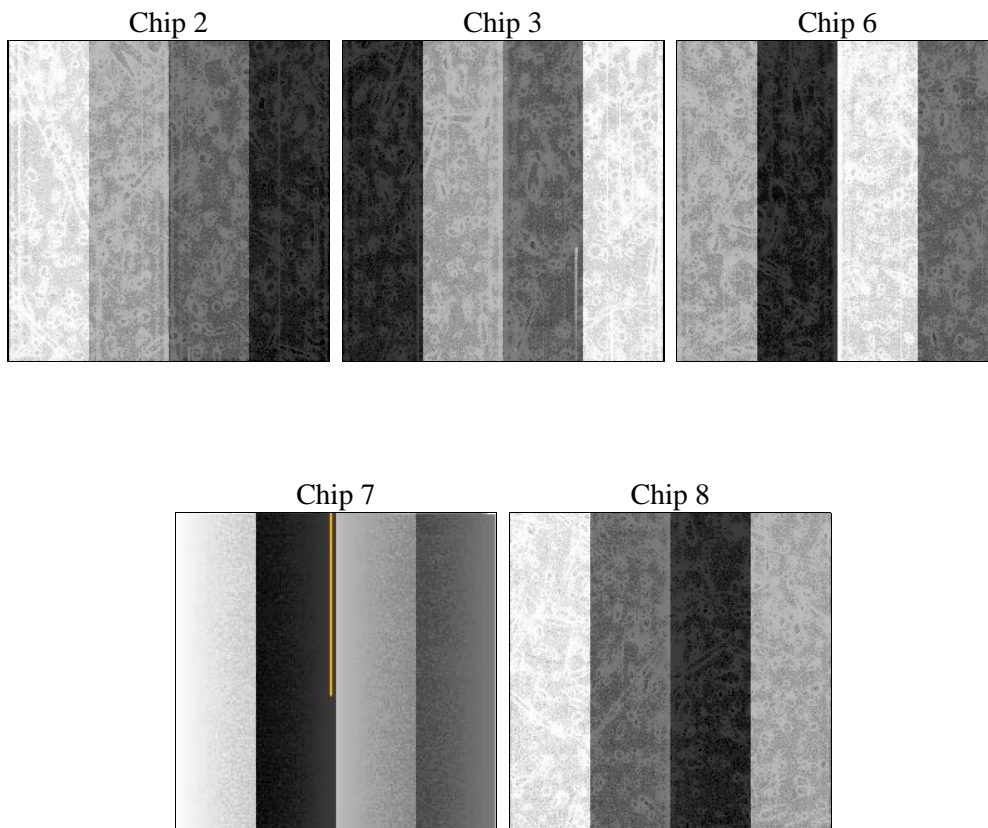
2 OBI

2.1 OBI

2.1.1 Images



2.1.2 Bias



2.1.3 Parameters

obi_num	1	Obi number	sched_exp_time	5000.000000	[s] Scheduled observation exposure time
ascdsver	8.4.5	Processing system revision	ontime	5105.6999901533	Sum of GTIs [s]
caldbver	4.5.2	 	ontime2	5105.6999901533	Sum of GTIs [s]
date	2012-10-14T00:31:44	Date and time of file creation	ontime3	5105.6999901533	Sum of GTIs [s]
revision	3	Processing version of data	ontime6	5105.6999901533	Sum of GTIs [s]
			ontime7	5105.6999901533	Sum of GTIs [s]
			ontime8	5105.6999901533	Sum of GTIs [s]
			l1events	188724	Number of level 1 events

2.1.4 Events

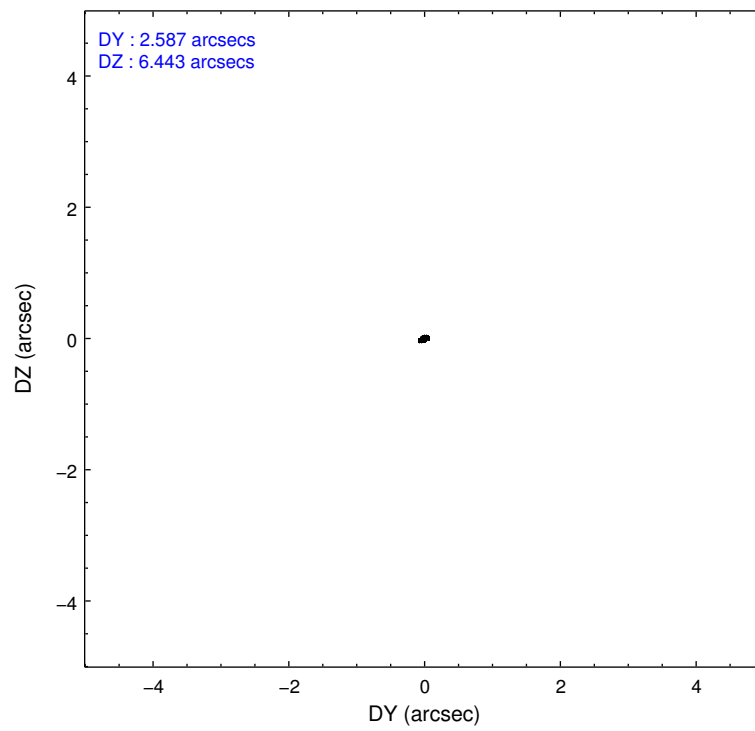
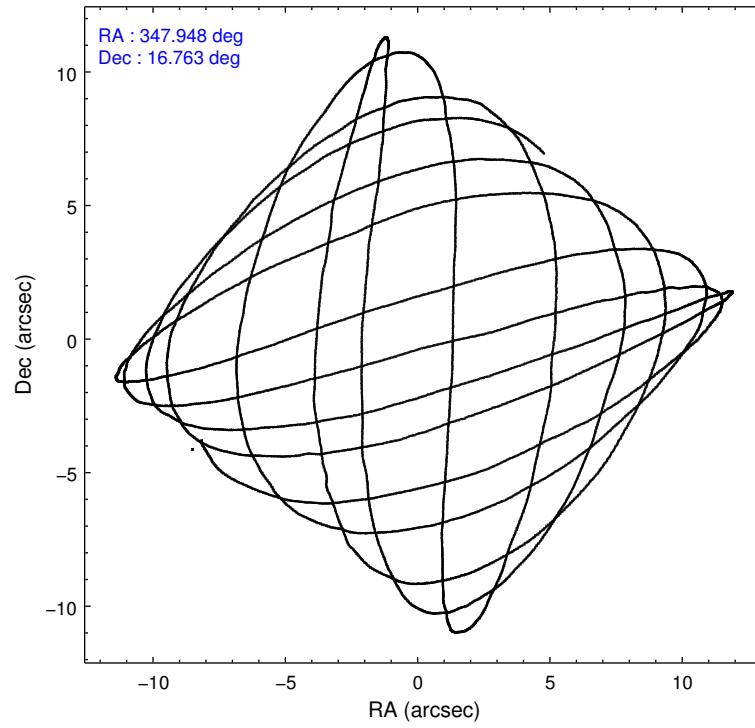
	ccd 2	ccd 3	ccd 6	ccd 7	ccd 8
level 1 events	32492	33020	33919	43946	45347
rejected events	28084	28775	29504	25593	33974
rejected %	86%	87%	86%	58%	74%

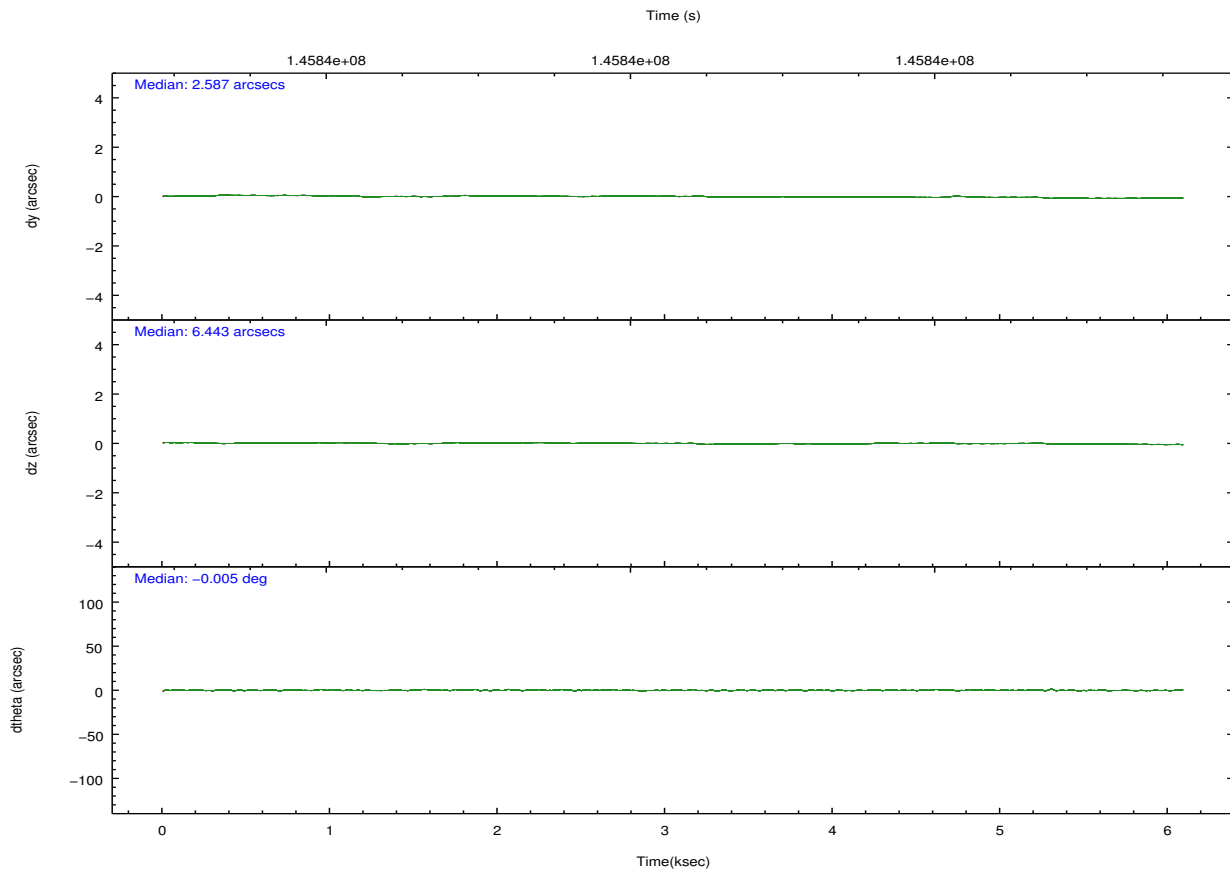
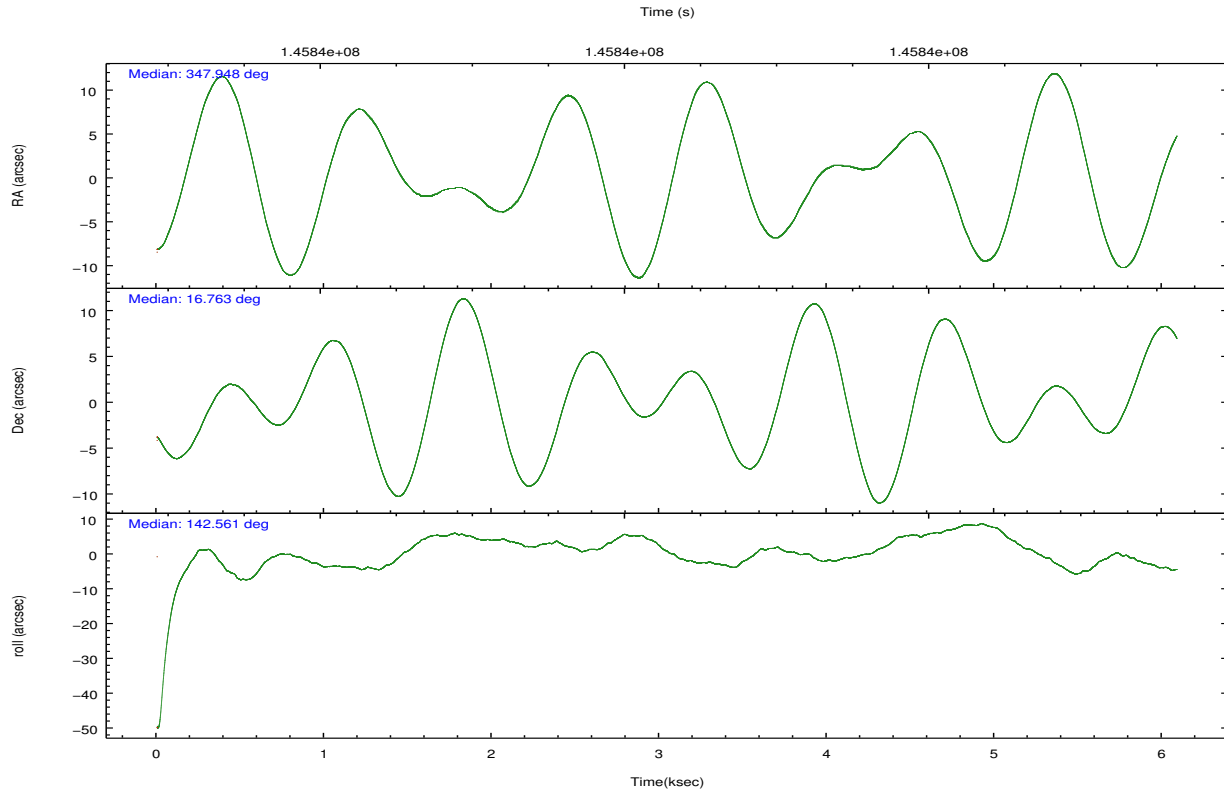
	ccd 2	ccd 3	ccd 6	ccd 7	ccd 8
grade 0 events	2032	1837	1748	1808	3996
	6%	5%	5%	4%	8%
grade 1 events	15	23	13	46	31
	0%	0%	0%	0%	0%
grade 2 events	881	908	1011	3620	2144
	2%	2%	2%	8%	4%
grade 3 events	361	379	419	1653	1529
	1%	1%	1%	3%	3%
grade 4 events	407	361	369	1588	1391
	1%	1%	1%	3%	3%
grade 5 events	1254	1330	1453	4095	1943
	3%	4%	4%	9%	4%
grade 6 events	729	766	872	9700	2315
	2%	2%	2%	22%	5%
grade 7 events	26813	27416	28034	21436	31998
	82%	83%	82%	48%	70%

2.2 Compared Parameters

Parameter	Planned	Actual	Parameter	Planned	Actual
Instrument	ACIS	ACIS	Obspar format version number	7	7
Detector	ACIS-23678	ACIS-23678	Obspar file type	PREDICTED	ACTUAL
Grating	NONE	NONE	Obspar update status	NONE	UPDATED
Data mode	FAINT	FAINT	Number of optional ACIS chips dropped	0	0
Observation mode	POINTING	POINTING	On-chip summing requested	N	N
[deg] Pointing RA	347.975943	347.9476516558577	Subarray requested	NONE	NONE
[deg] Pointing Dec	16.759951	16.76310690656644	Alternating exposures requested	N	N
[deg] Pointing Roll	142.394986	142.5596915843203	[s] Primary exposure time	0.000000	3.1
[mm] SIM focus pos	-0.684267	-0.6828225247311905			
[mm] SIM defocus	0	0.001444936568705701			
[mm] SIM translation stage pos	-190.132523	-190.1400660498719			
[mm] SIM translation stage offset	0	0.00754346686406393			
[s] Observation start time (MET)	145836327.184000	145834921.4845			
Observation start date	2002-08-15T22:04:23	2002-08-15T21:42:01			
[s] Observation end time (MET)	145841327.184000	145842107.7598			
Observation end date	2002-08-15T23:27:43	2002-08-15T23:41:47			
Read mode	TIMED	TIMED			

2.3 Aspect



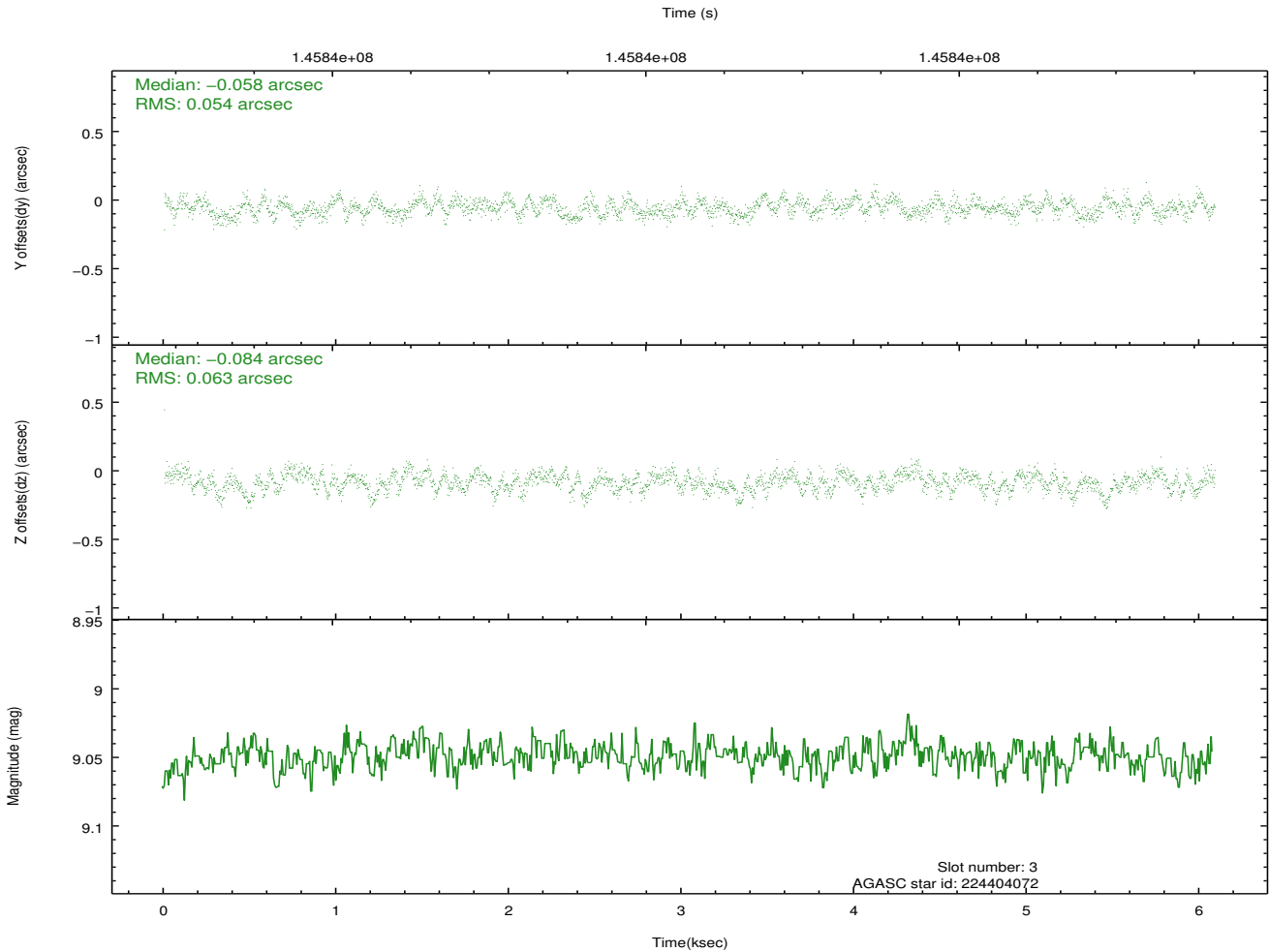
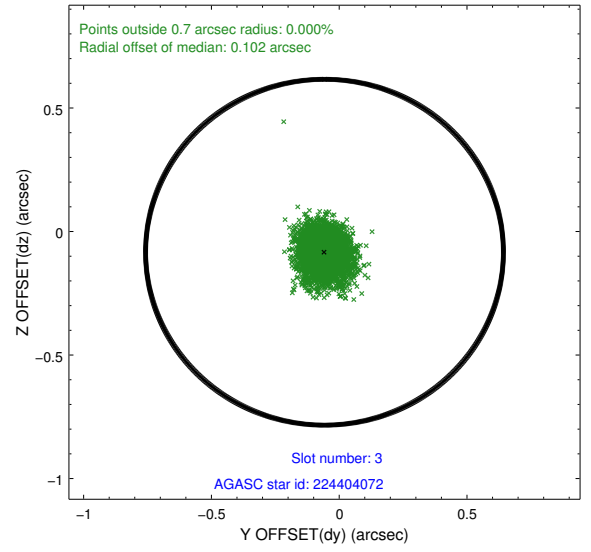
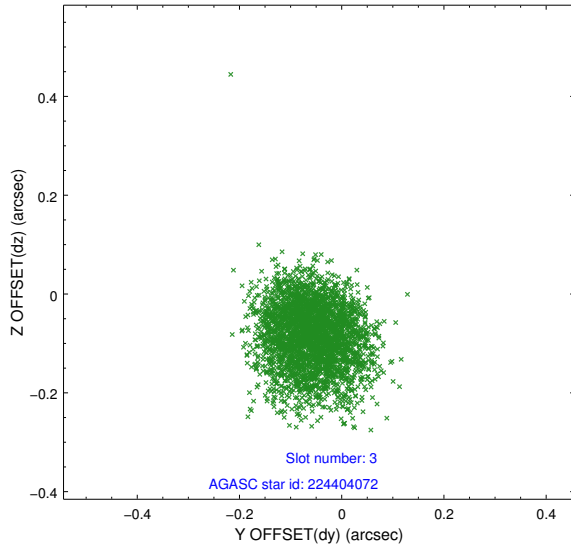


Slot Statistics

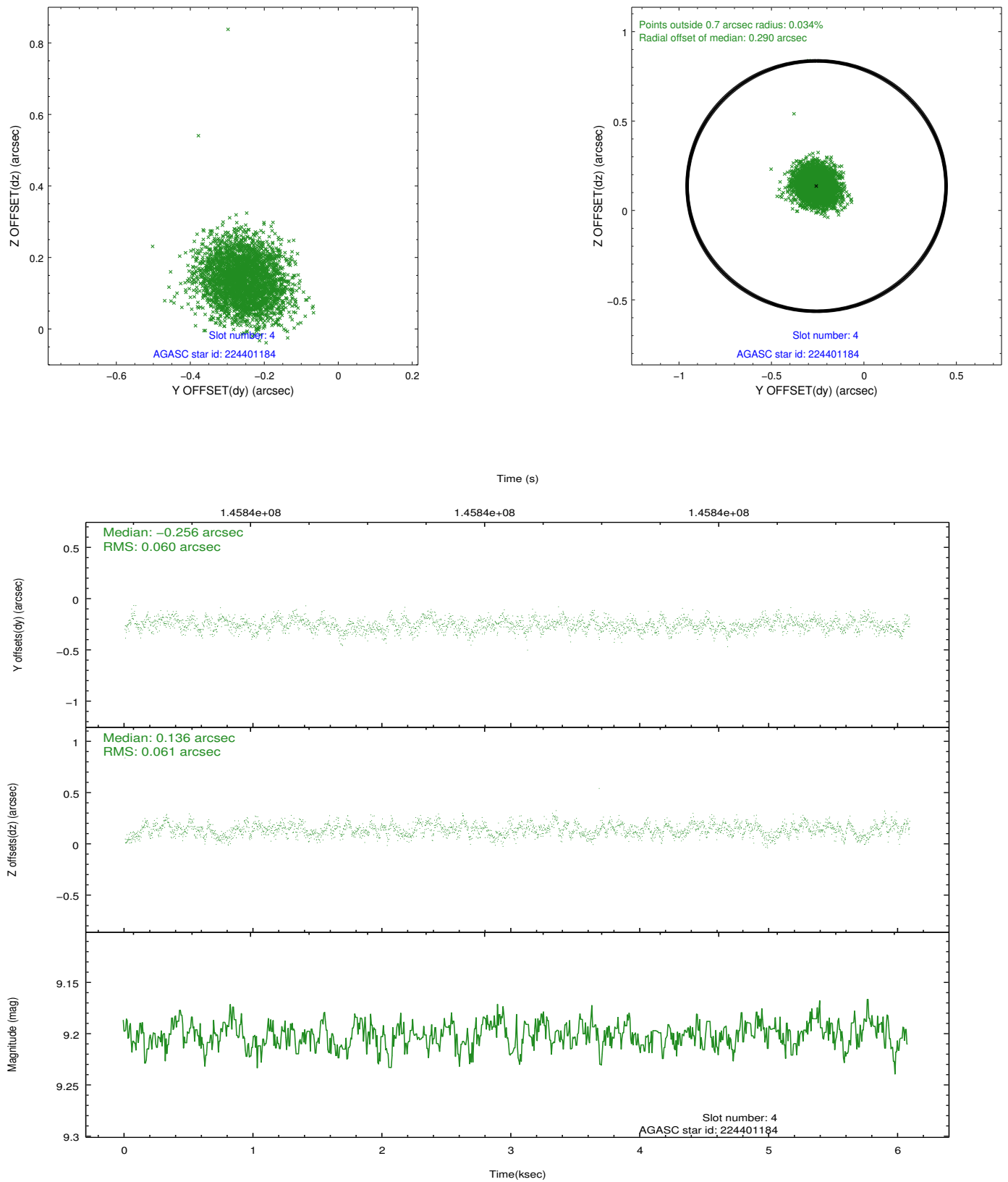
slot	status	id	mag	n_pts	med_dy	med_dz	dr1	dr2	ra	dec	mean_y	mean_z
0	FID	ACIS-S-2	7.11	1485	-0.030	0.013	0.006	0.011	0.000000	0.000000	-755.22	-1727.59
1	FID	ACIS-S-4	7.20	1485	-0.023	0.011	0.005	0.009	0.000000	0.000000	2157.60	179.93
2	FID	ACIS-S-5	7.24	1485	0.021	-0.015	0.006	0.010	0.000000	0.000000	-1806.78	174.63
3	GUIDE	224404072	9.05	2966	-0.058	-0.084	0.089	0.138	347.543178	16.533642	687.93	1555.95
4	GUIDE	224401184	9.20	2966	-0.256	0.136	0.092	0.142	347.545229	17.266087	2286.76	-540.23
5	GUIDE	224403944	9.22	2967	0.123	0.140	0.067	0.112	348.537526	16.550854	-1991.23	-587.97
6	GUIDE	224404344	9.21	2970	0.008	-0.116	0.073	0.124	347.736702	16.806286	755.47	370.72
7	GUIDE	224399224	9.27	2969	0.180	-0.070	0.077	0.124	348.396087	16.343325	-2063.14	301.86

2.4 Star Slots

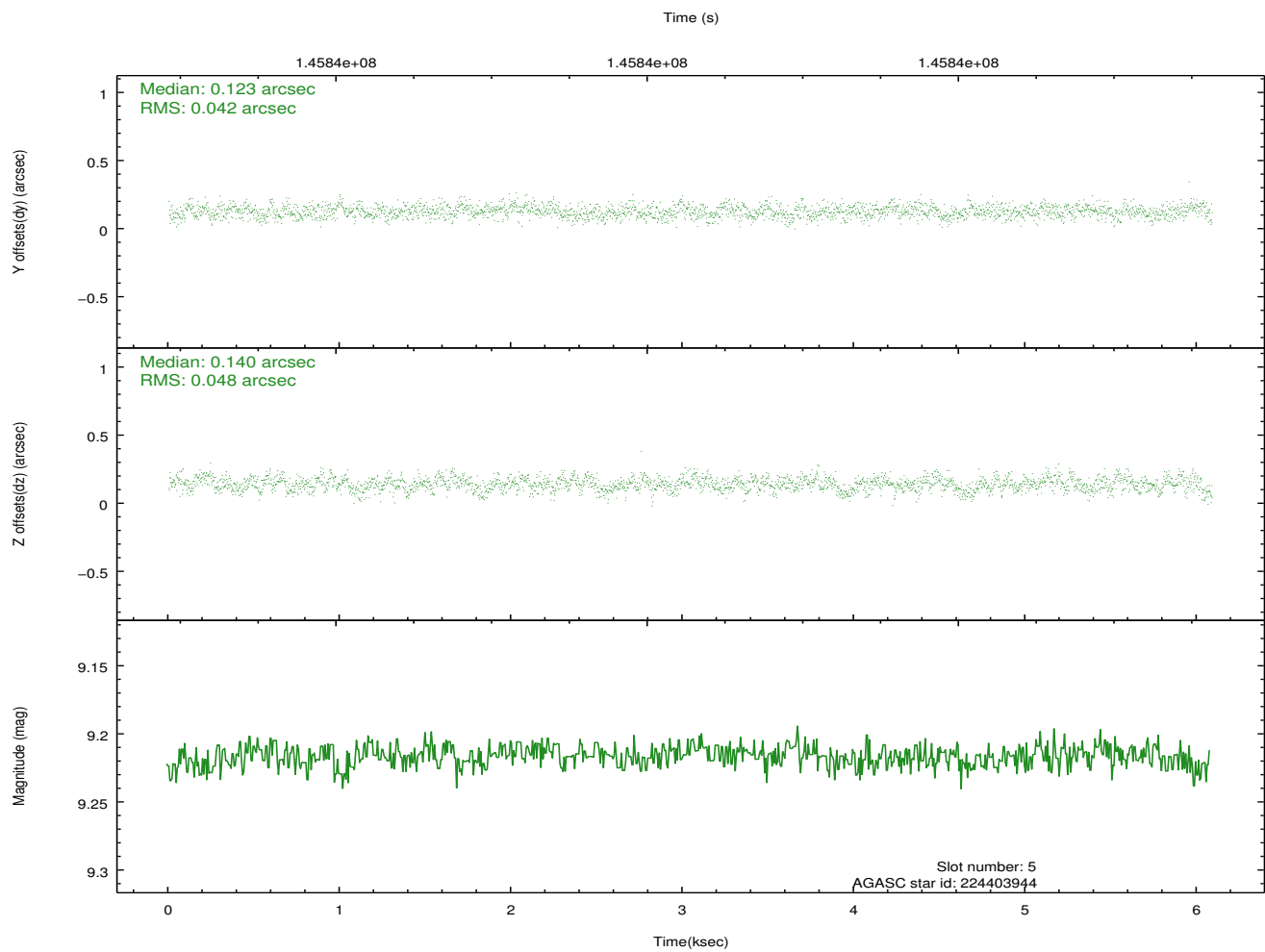
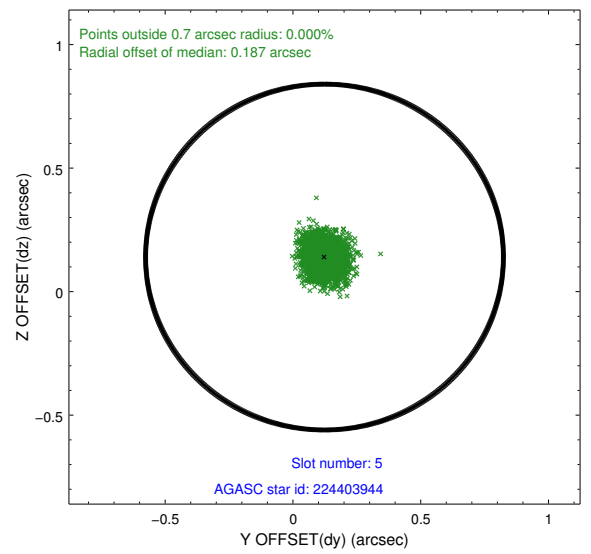
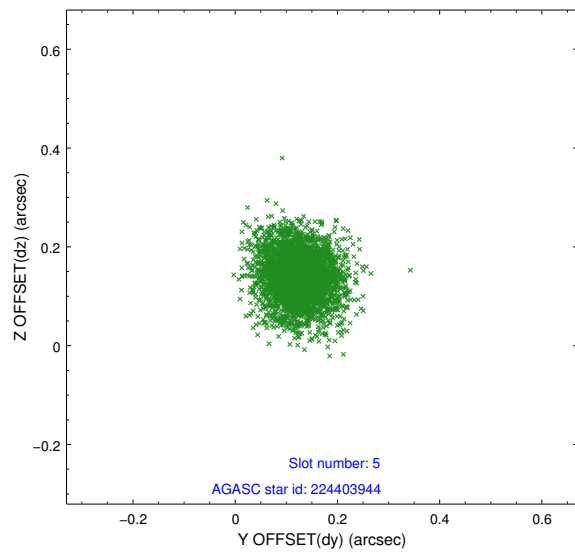
2.4.1 Slot 3



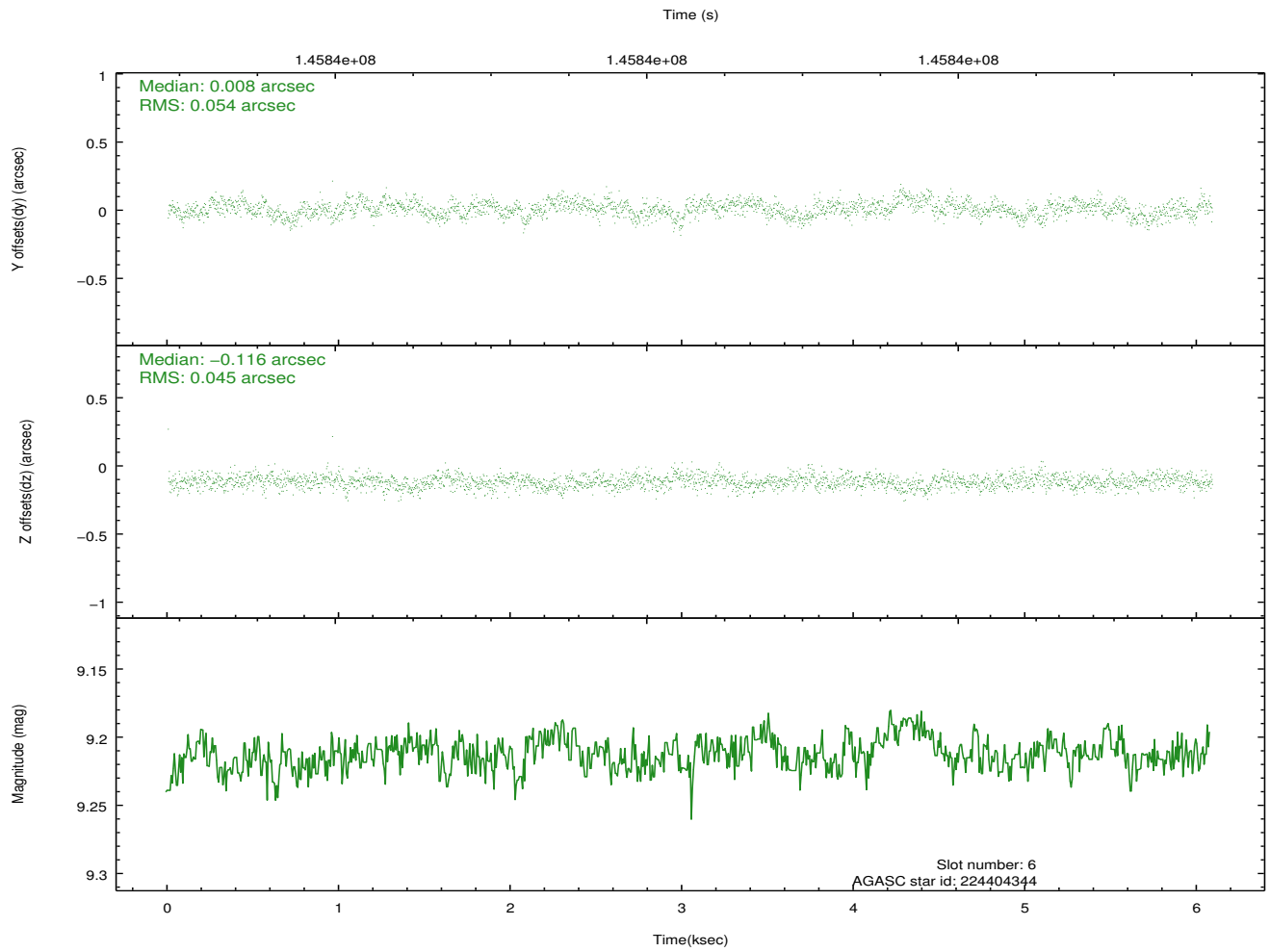
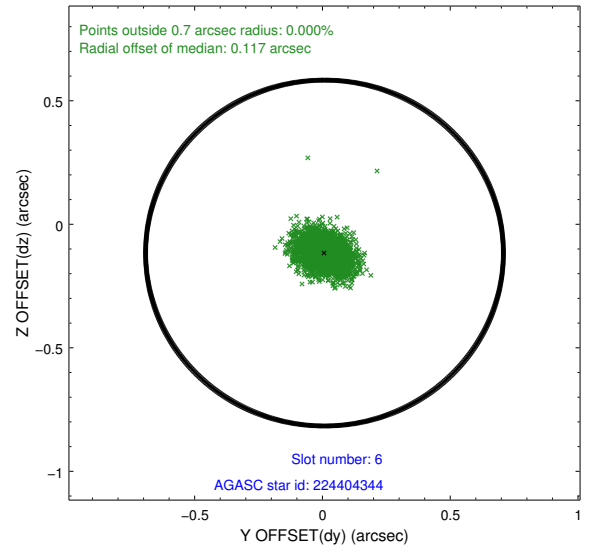
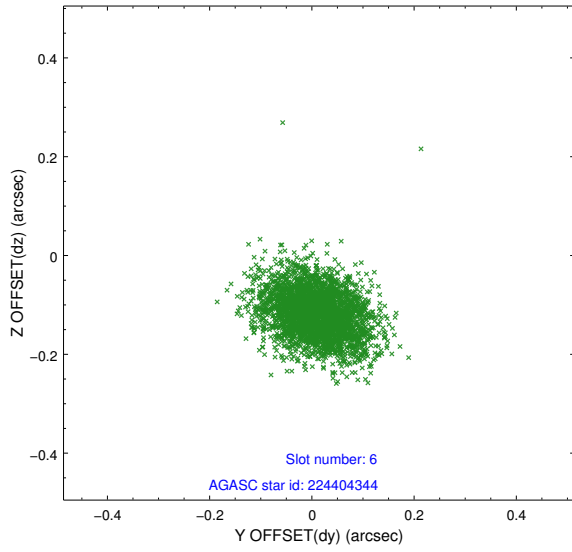
2.4.2 Slot 4



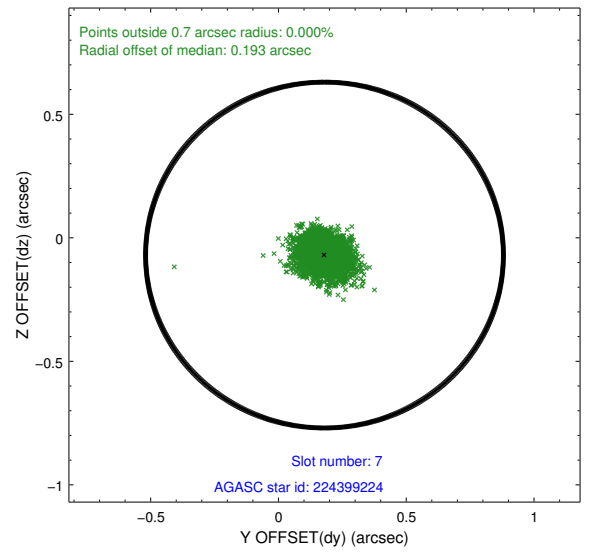
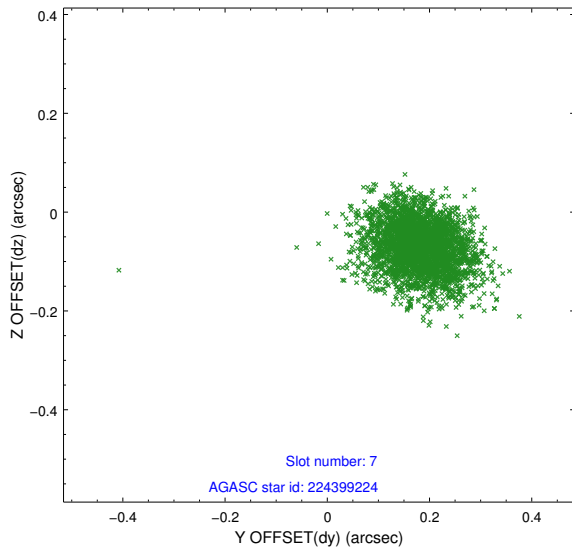
2.4.3 Slot 5



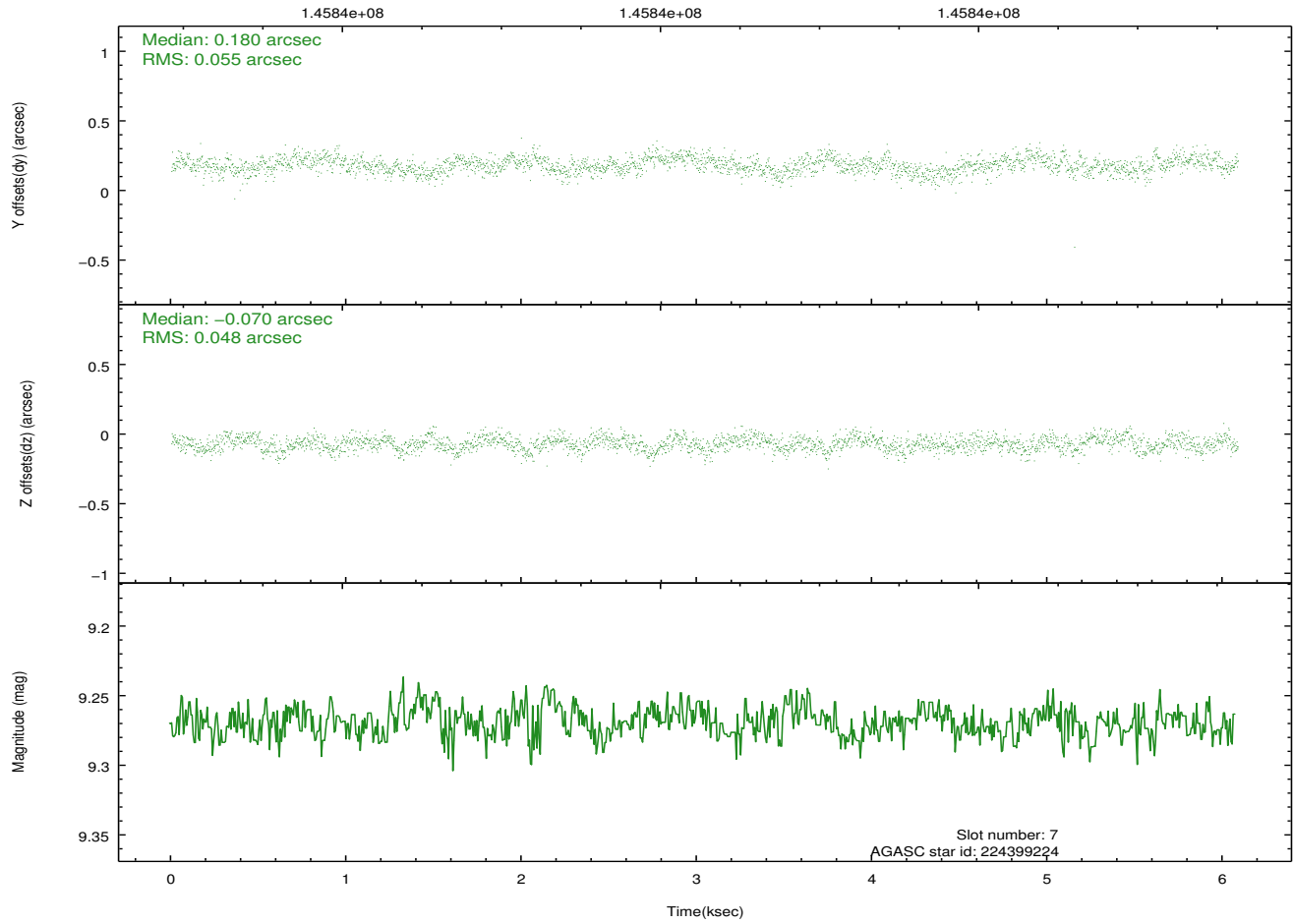
2.4.4 Slot 6



2.4.5 Slot 7

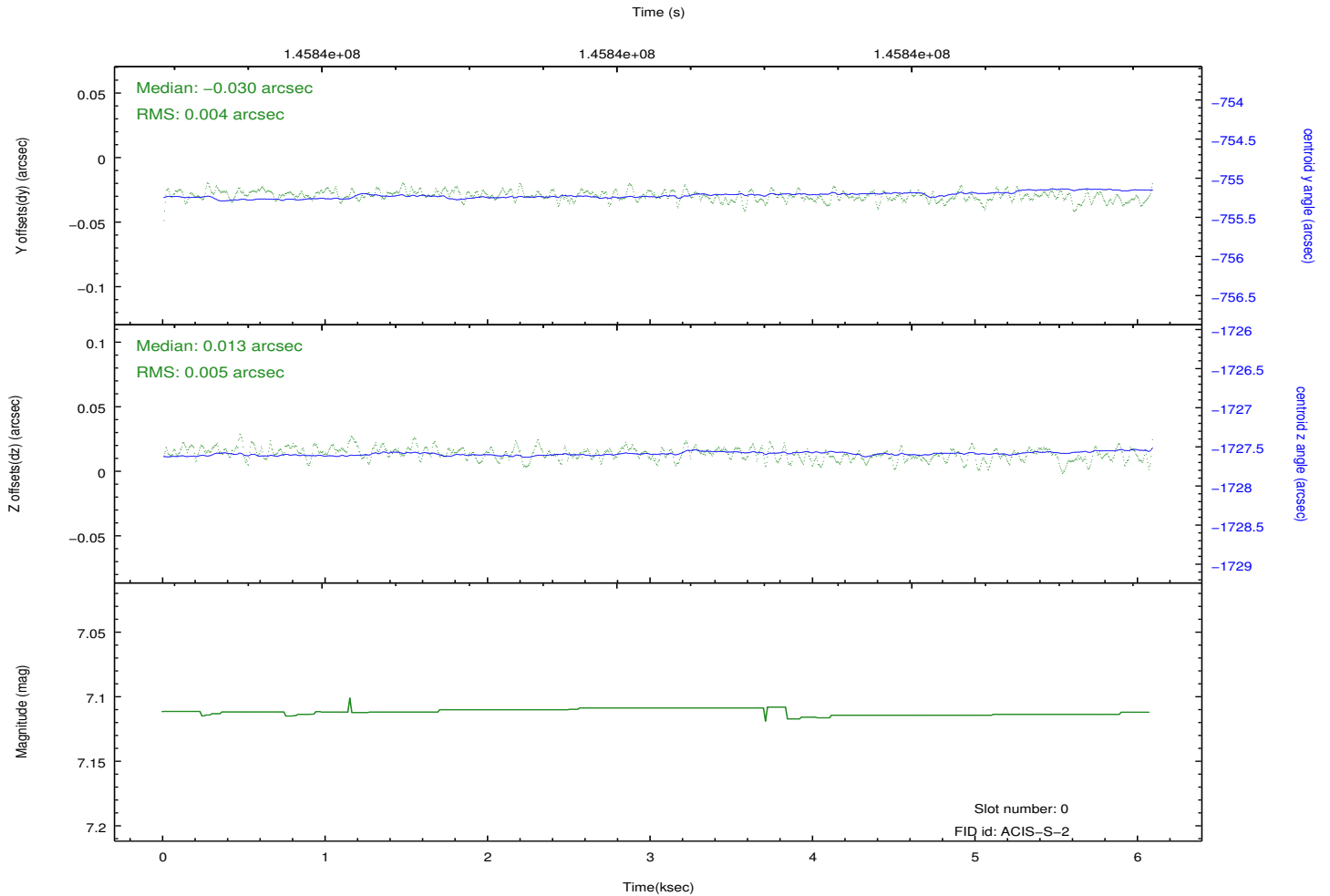
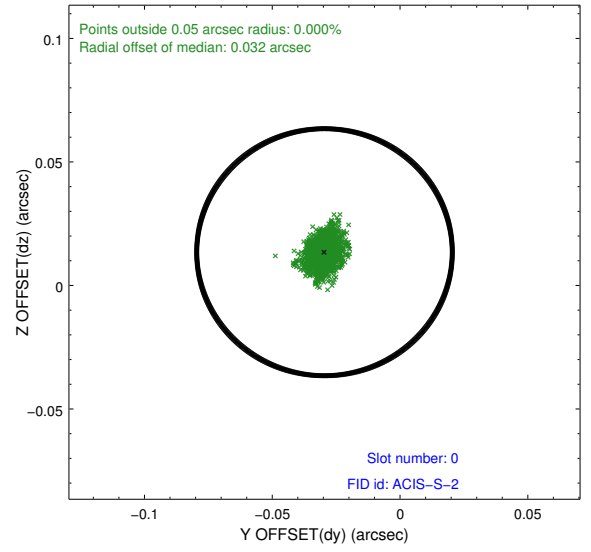
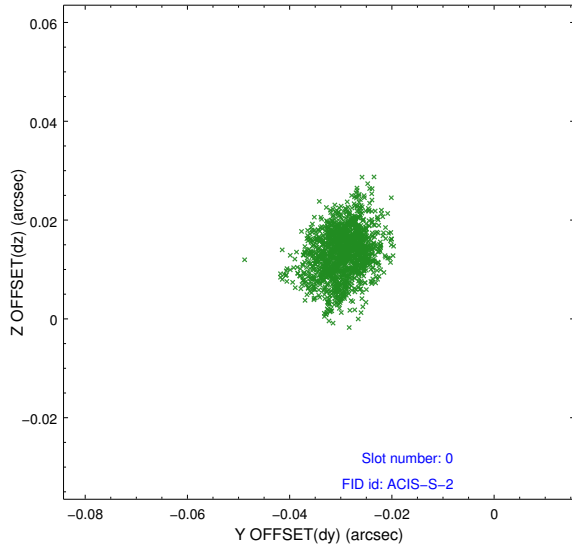


Time (s)

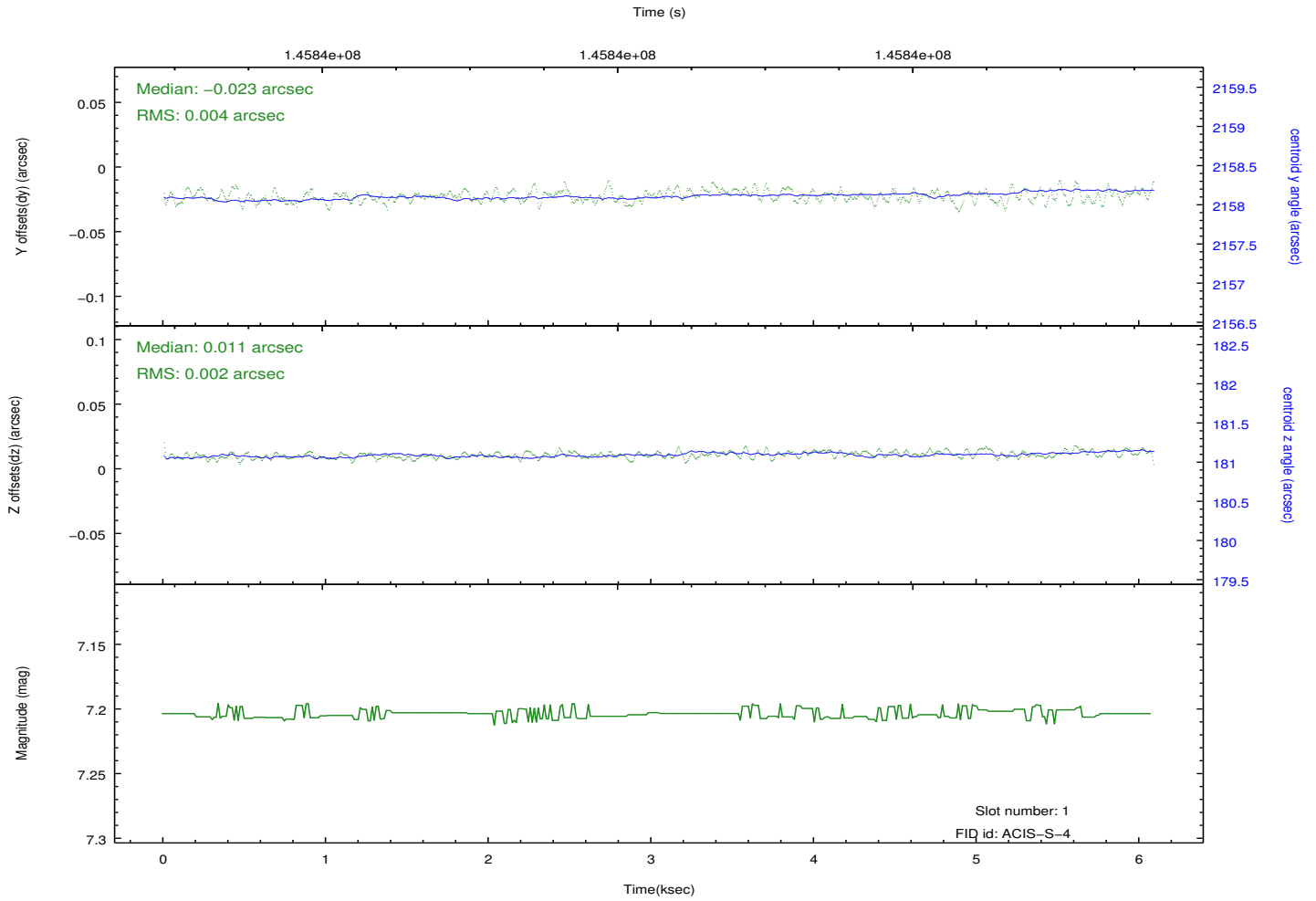
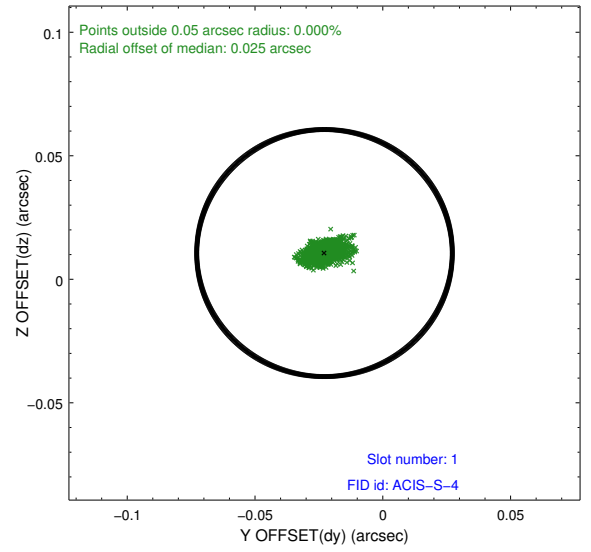
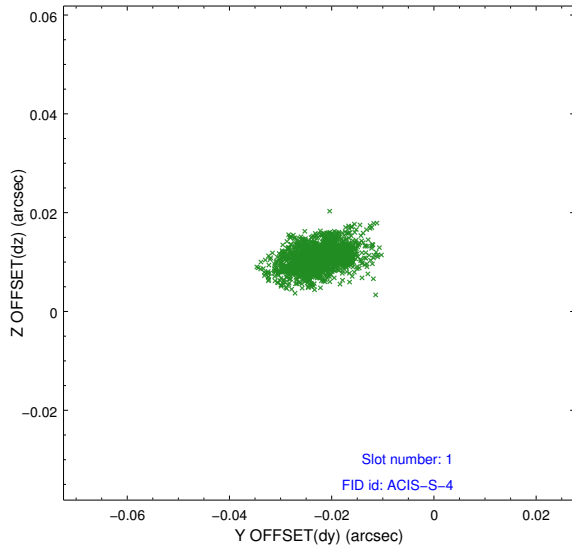


2.5 FID Slots

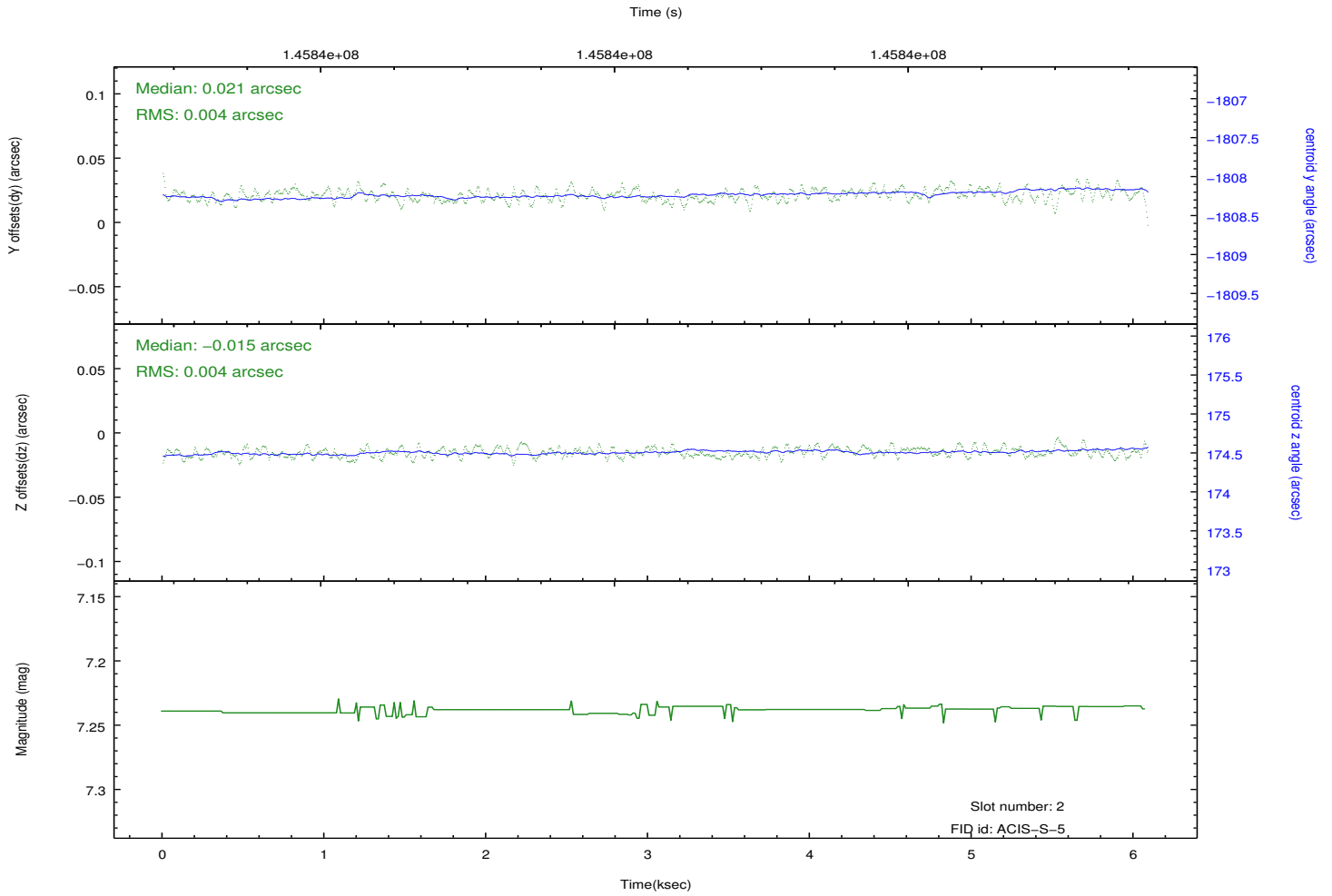
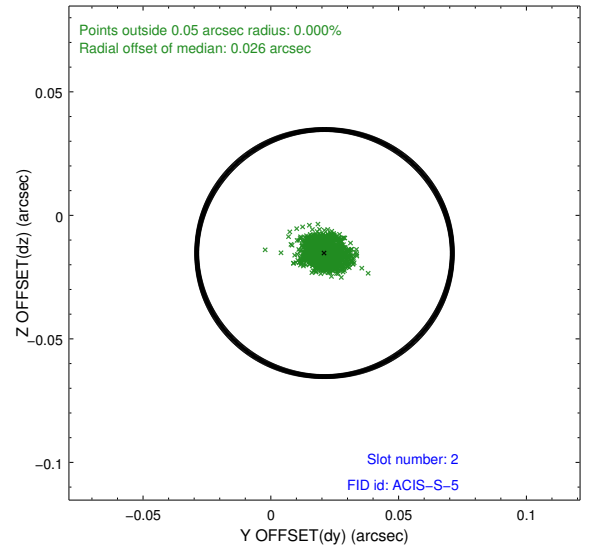
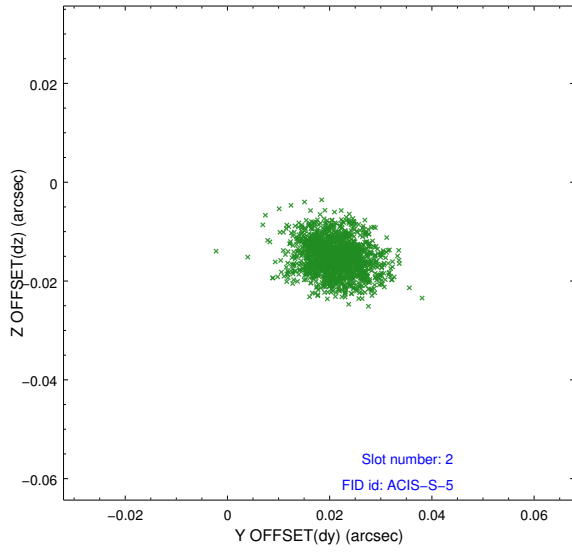
2.5.1 Slot 0



2.5.2 Slot 1



2.5.3 Slot 2



A Summary

A.1 Status

V&V Scientist	Jen Lauer
V&V Date (YYYY-MM-DD)	2012.10.23
V&V Edition	1
V&V Disposition and Status	OK
V&V Charge Time	5.108

A.2 Comments

Joint Proposal: CX0-HST