

V&V Reference Report

L2 ASCDS Version : 8.4.5

Observation 3195 - L2 Version 3
Chandra X-Ray Center

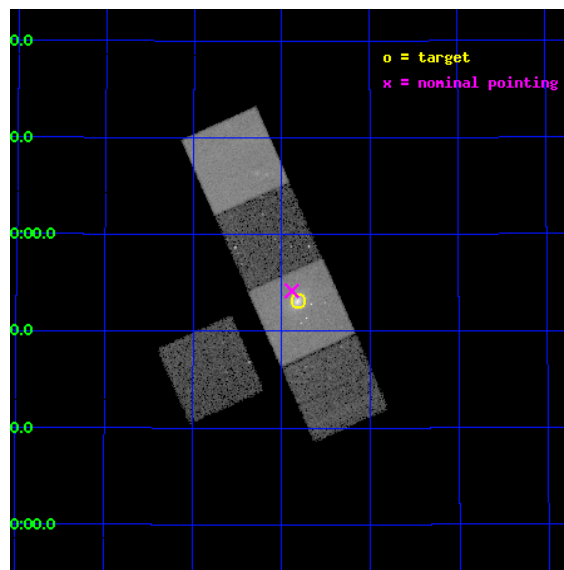
L2 Processing Date : Sep 26 2012

Contents

1	Front	2
2	OBI	3
2.1	OBI	3
2.1.1	Images	3
2.1.2	Bias	3
2.1.3	Parameters	4
2.1.4	Events	4
2.2	Compared Parameters	5
2.3	Aspect	6
2.4	Star Slots	9
2.4.1	Slot 3	9
2.4.2	Slot 4	10
2.4.3	Slot 5	11
2.4.4	Slot 6	12
2.4.5	Slot 7	13
2.5	FID Slots	14
2.5.1	Slot 0	14
2.5.2	Slot 1	15
2.5.3	Slot 2	16
A	Summary	17
A.1	Status	17
A.2	Comments	17

1 Front

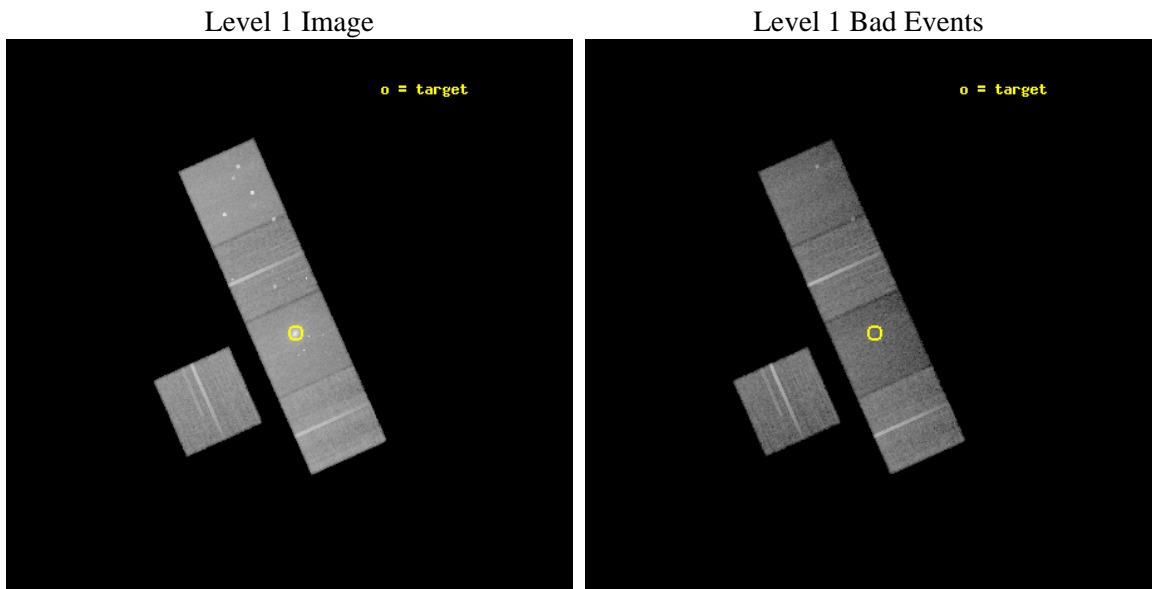
seq_num	800195	Sequence number
obs_id	3195	Observation id
title	CHANDRA AND HST OBSERVATIONS OF THE BRIGHTEST, RELAXED CLUSTER LENSES	Proposal title
observer	Prof. Steven Allen	Principal investigator
object	ZWICKY 2701	Source name
dtcycle	0	
cycle	P	events from which exps? Prim/Second/Both
ra_targ	148.205	Observer's specified target RA [deg]
dec_targ	51.885	Observer's specified target Dec [deg]
ra_nom	148.22126833792	Nominal RA [deg]
dec_nom	51.903224681504	Nominal Dec [deg]
roll_nom	65.989635519722	Nominal Roll [deg]
revision	3	Processing version of data
ontime	27270.699947566	Sum of GTIs [s]
livetime	26914.388176354	Livetime [s]
ontime3	27270.699947566	Sum of GTIs [s]
ontime5	27270.699947566	Sum of GTIs [s]
ontime6	27270.699947566	Sum of GTIs [s]
ontime7	27270.699947566	Sum of GTIs [s]
ontime8	27254.995056584	Sum of GTIs [s]
l2events	232554	Number of level 2 events



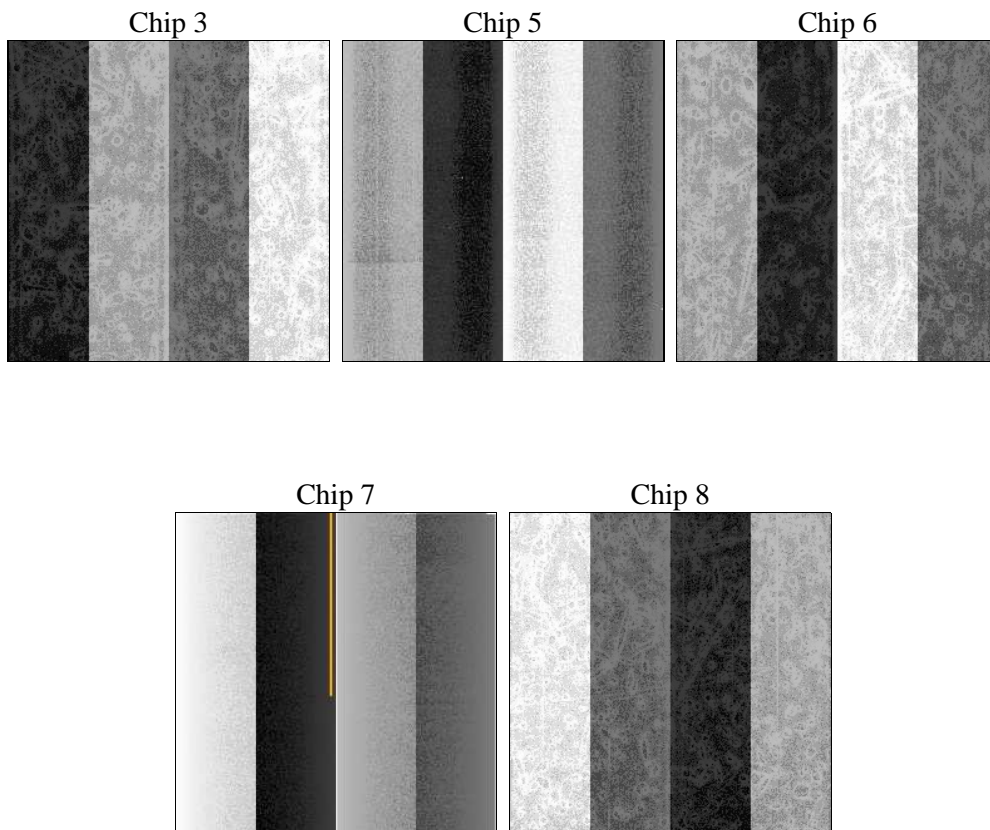
2 OBI

2.1 OBI

2.1.1 Images



2.1.2 Bias



2.1.3 Parameters

obi_num	0	Obi number	sched_exp_time	27500.000000	[s] Scheduled observation exposure time
ascdsver	8.4.5	Processing system revision	ontime	27270.699947566	Sum of GTIs [s]
caldbver	4.5.1.1	 	ontime3	27270.699947566	Sum of GTIs [s]
date	2012-09-27T00:16:17	Date and time of file creation	ontime5	27270.699947566	Sum of GTIs [s]
revision	3	Processing version of data	ontime6	27270.699947566	Sum of GTIs [s]
			ontime7	27270.699947566	Sum of GTIs [s]
			ontime8	27254.995056584	Sum of GTIs [s]
			l1events	876964	Number of level 1 events

2.1.4 Events

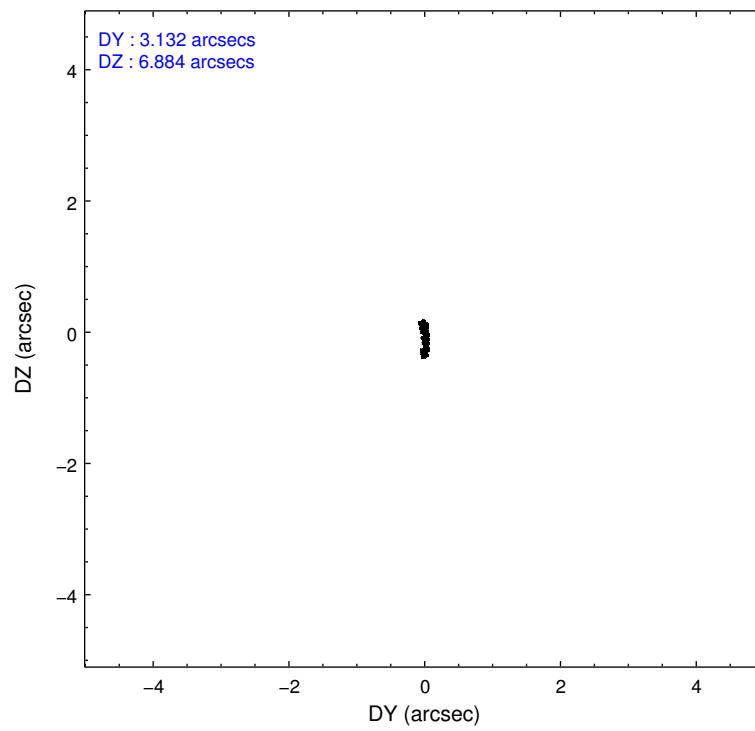
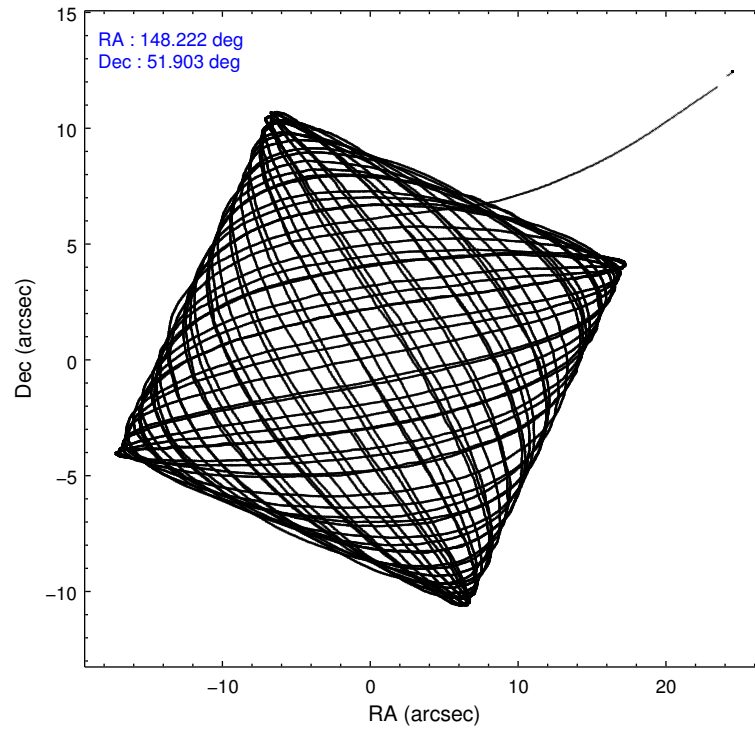
	ccd 3	ccd 5	ccd 6	ccd 7	ccd 8
level 1 events	146043	198735	154761	188487	188938
rejected events	132606	96808	137189	85254	147845
rejected %	90%	48%	88%	45%	78%

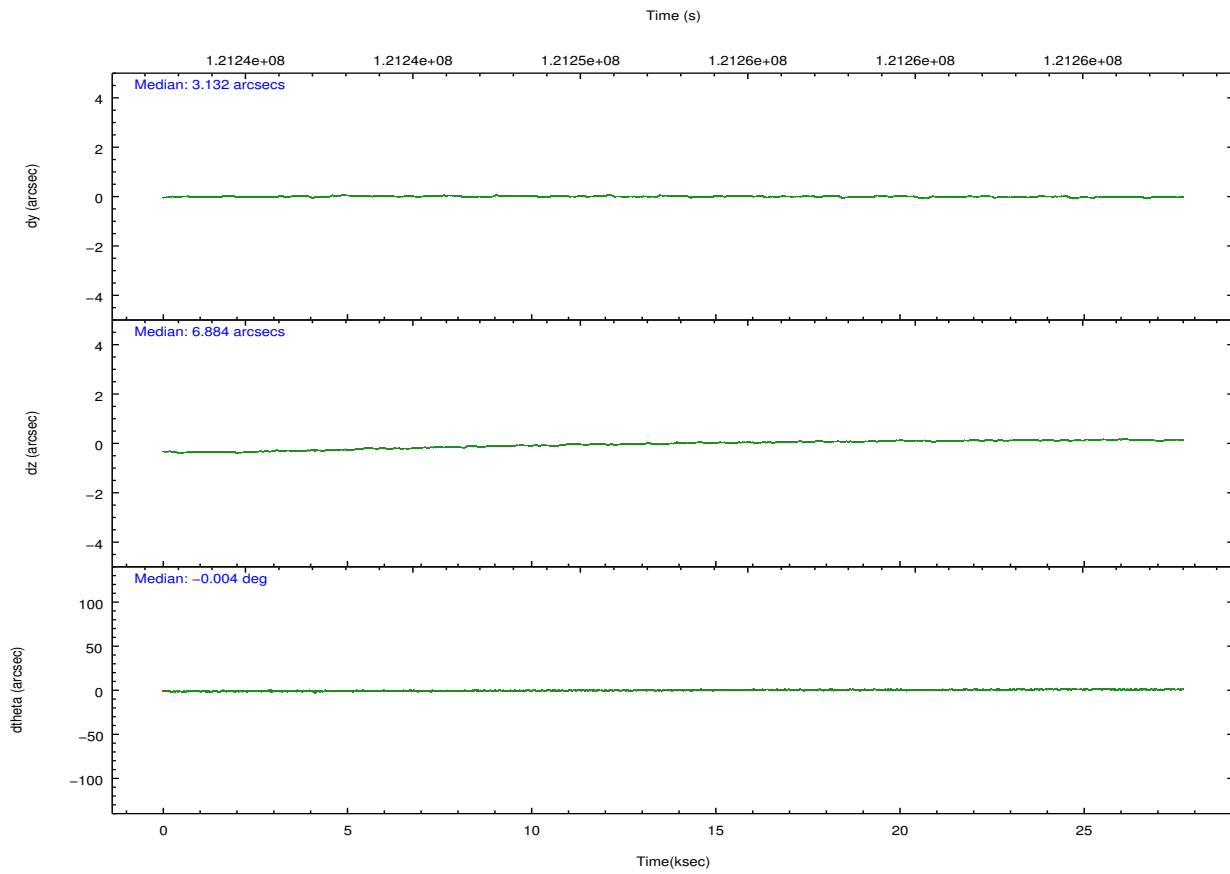
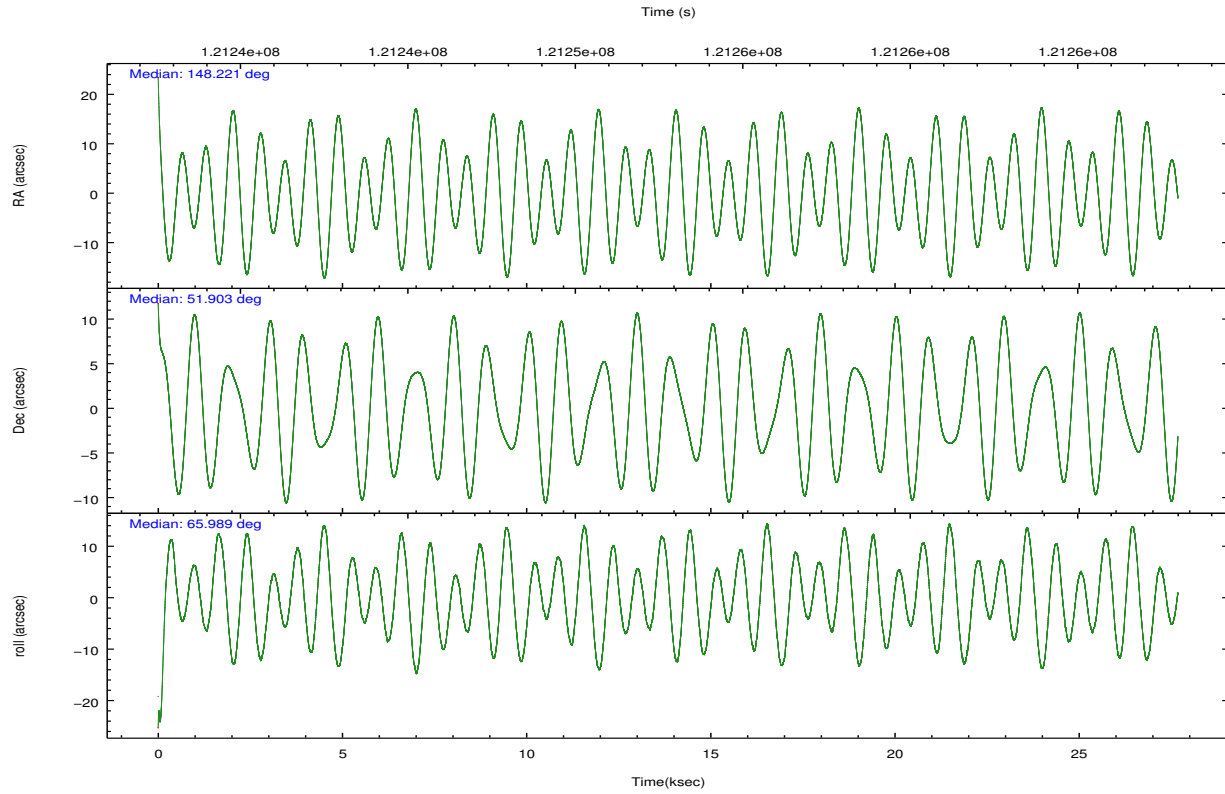
	ccd 3	ccd 5	ccd 6	ccd 7	ccd 8
grade 0 events	4777	16007	7716	17509	12671
	3%	8%	4%	9%	6%
grade 1 events	63	259	90	173	116
	0%	0%	0%	0%	0%
grade 2 events	2811	27656	3280	22372	8614
	1%	13%	2%	11%	4%
grade 3 events	1611	4664	1724	10320	4829
	1%	2%	1%	5%	2%
grade 4 events	1519	4505	1716	10500	4322
	1%	2%	1%	5%	2%
grade 5 events	5123	16009	5618	16755	7495
	3%	8%	3%	8%	3%
grade 6 events	2721	49102	3137	42545	10659
	1%	24%	2%	22%	5%
grade 7 events	127418	80533	131480	68313	140232
	87%	40%	84%	36%	74%

2.2 Compared Parameters

Parameter	Planned	Actual	Parameter	Planned	Actual
Instrument	ACIS	ACIS	Obspar format version number	7	7
Detector	ACIS-35678	ACIS-35678	Obspar file type	PREDICTED	ACTUAL
Grating	NONE	NONE	Obspar update status	NONE	UPDATED
Data mode	VFAINT	VFAINT	Number of optional ACIS chips dropped	0	0
Observation mode	POINTING	POINTING	On-chip summing requested	N	N
[deg] Pointing RA	148.226388	148.2212683379194	Subarray requested	NONE	NONE
[deg] Pointing Dec	51.876146	51.90322468150364	Alternating exposures requested	N	N
[deg] Pointing Roll	65.828978	65.9896355197225	[s] Primary exposure time	0.000000	3.1
[mm] SIM focus pos	-0.684267	-0.6828225247311905			
[mm] SIM defocus	0	0.001444936568705701			
[mm] SIM translation stage pos	-190.132523	-190.1425803651734			
[mm] SIM translation stage offset	0	0.01005778216563158			
[s] Observation start time (MET)	121239107.184000	121238368.07459			
Observation start date	2001-11-04T05:30:43	2001-11-04T05:19:28			
[s] Observation end time (MET)	121266607.184000	121267598.00075			
Observation end date	2001-11-04T13:09:03	2001-11-04T13:26:38			
Read mode	TIMED	TIMED			

2.3 Aspect



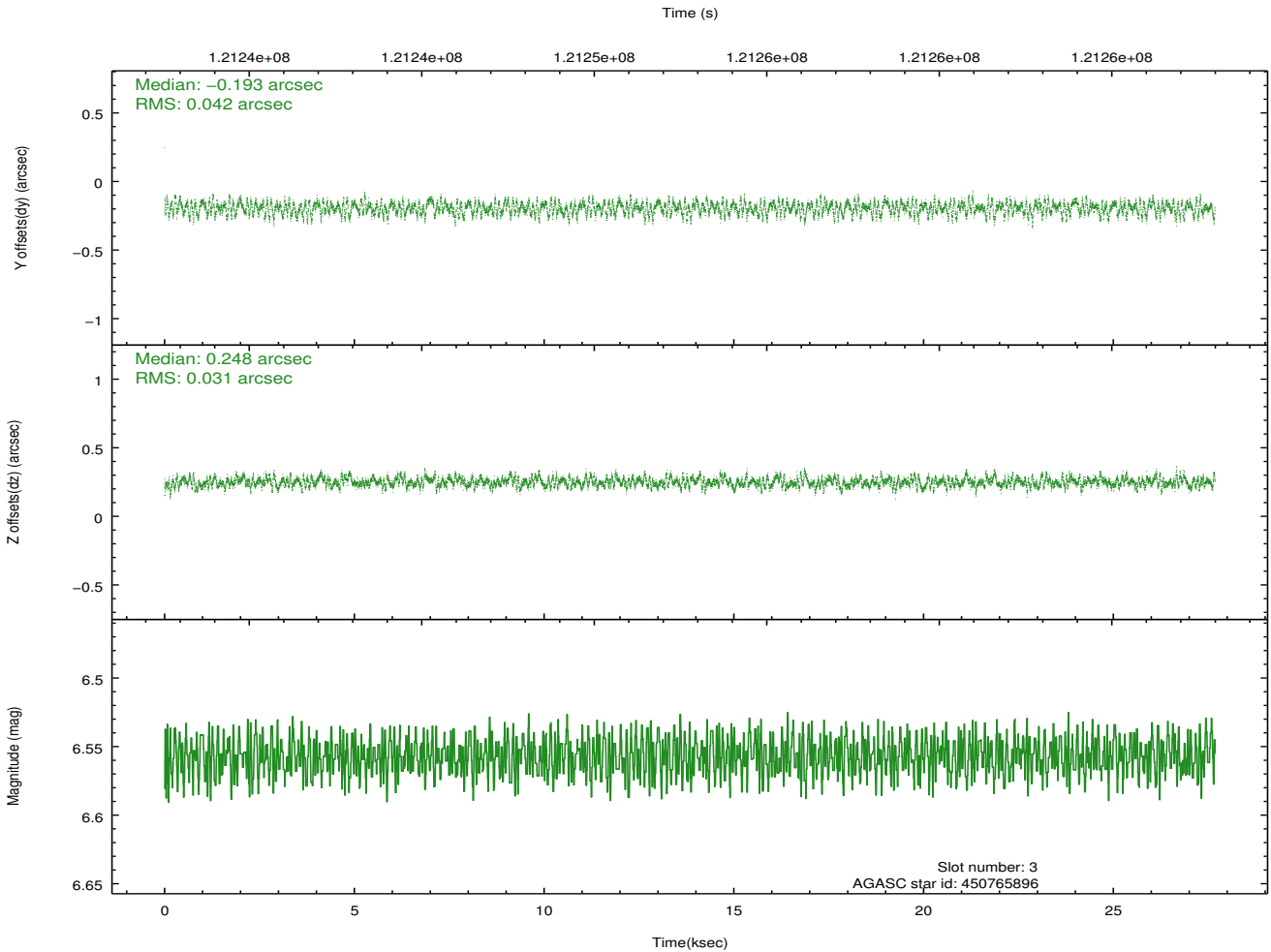
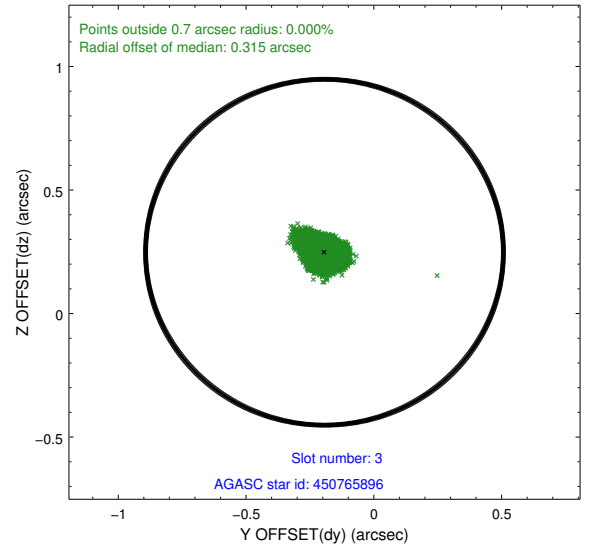
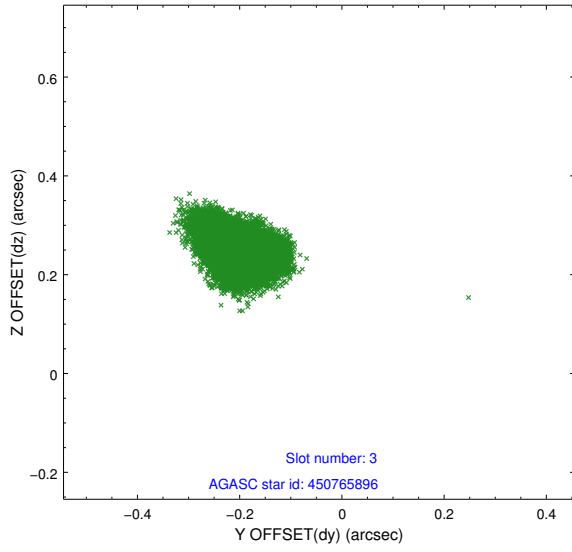


Slot Statistics

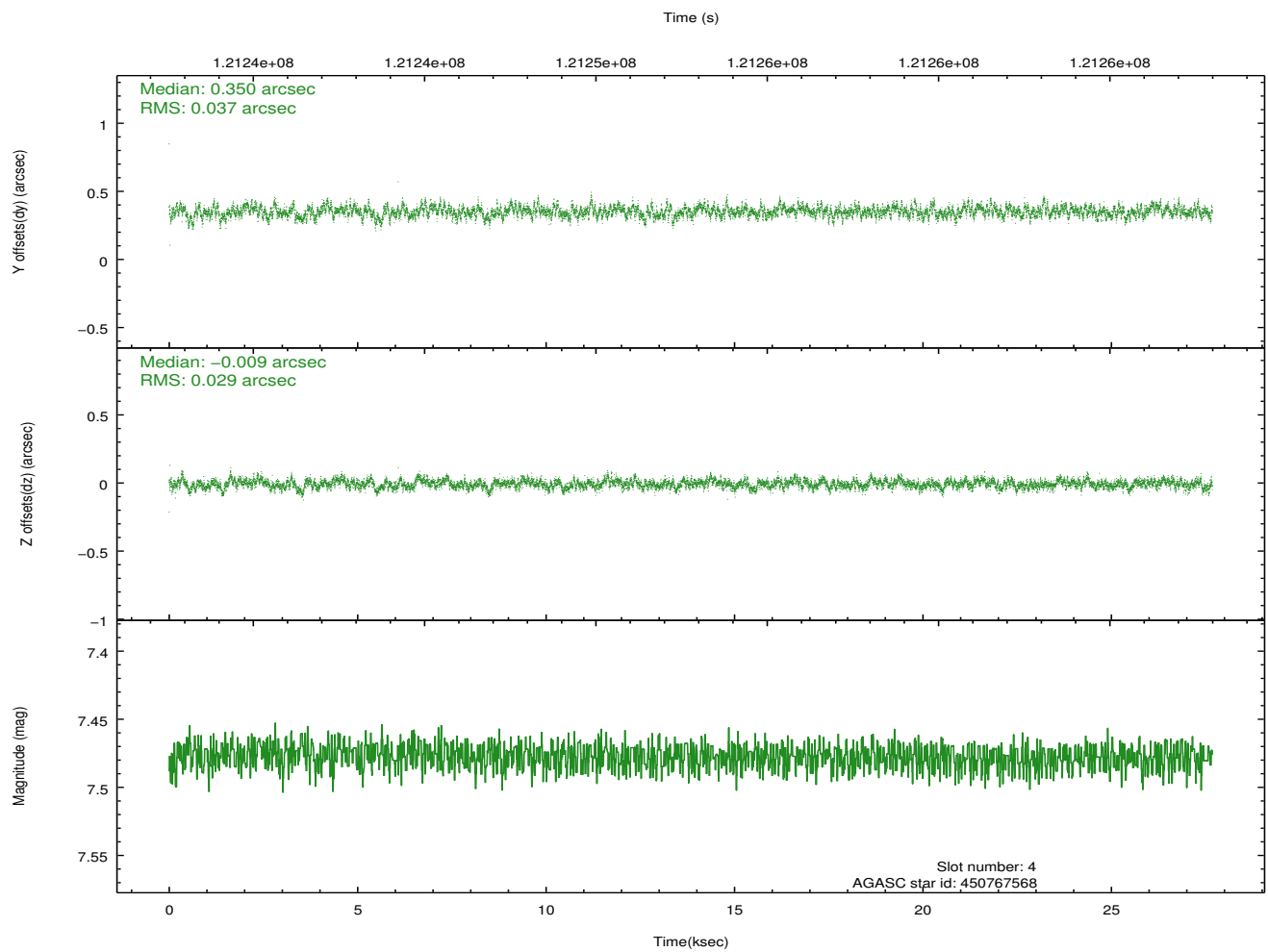
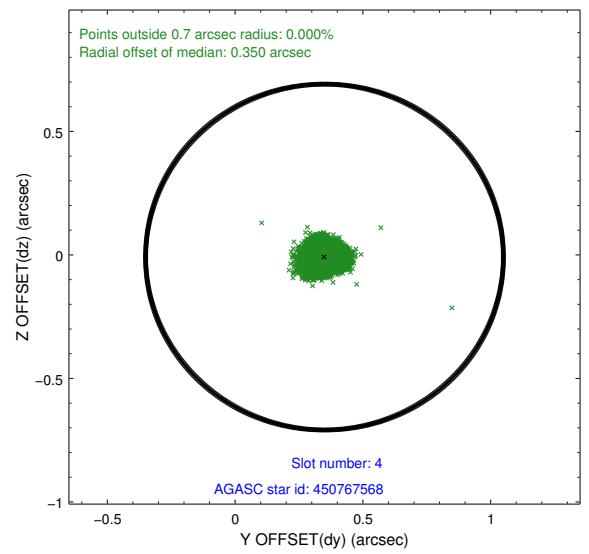
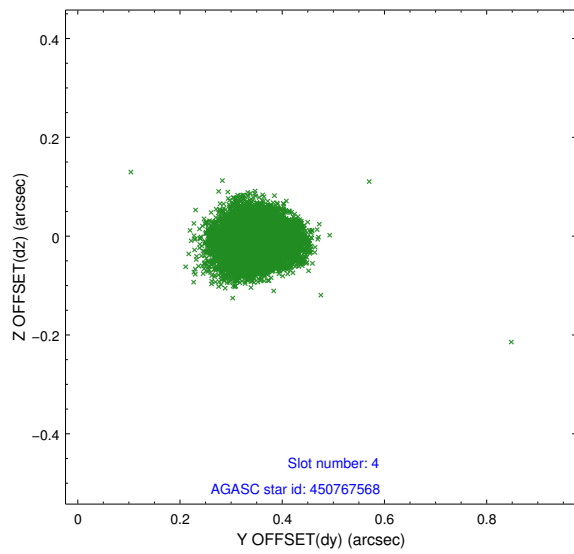
slot	status	id	mag	n_pts	med_dy	med_dz	dr1	dr2	ra	dec	mean_y	mean_z
0	FID	ACIS-S-2	7.11	6752	-0.013	0.006	0.008	0.015	0.000000	0.000000	-755.78	-1727.95
1	FID	ACIS-S-4	7.20	6750	-0.024	0.005	0.006	0.011	0.000000	0.000000	2157.43	180.46
2	FID	ACIS-S-5	7.24	6751	0.007	-0.002	0.008	0.015	0.000000	0.000000	-1808.49	174.20
3	GUIDE	450765896	6.56	13504	-0.193	0.248	0.054	0.091	149.025073	52.268987	2019.00	-1021.54
4	GUIDE	450767568	7.48	13504	0.350	-0.009	0.049	0.081	147.522964	51.410908	-2167.59	758.68
5	GUIDE	499920080	7.96	13501	-0.325	-0.082	0.051	0.082	148.226554	52.586502	2332.50	1047.23
6	GUIDE	499918192	9.37	13497	-0.035	-0.140	0.085	0.134	147.772301	52.623738	2051.81	2009.07
7	GUIDE	450766776	8.84	13498	0.205	-0.020	0.074	0.118	148.001413	51.589652	-1146.20	37.63

2.4 Star Slots

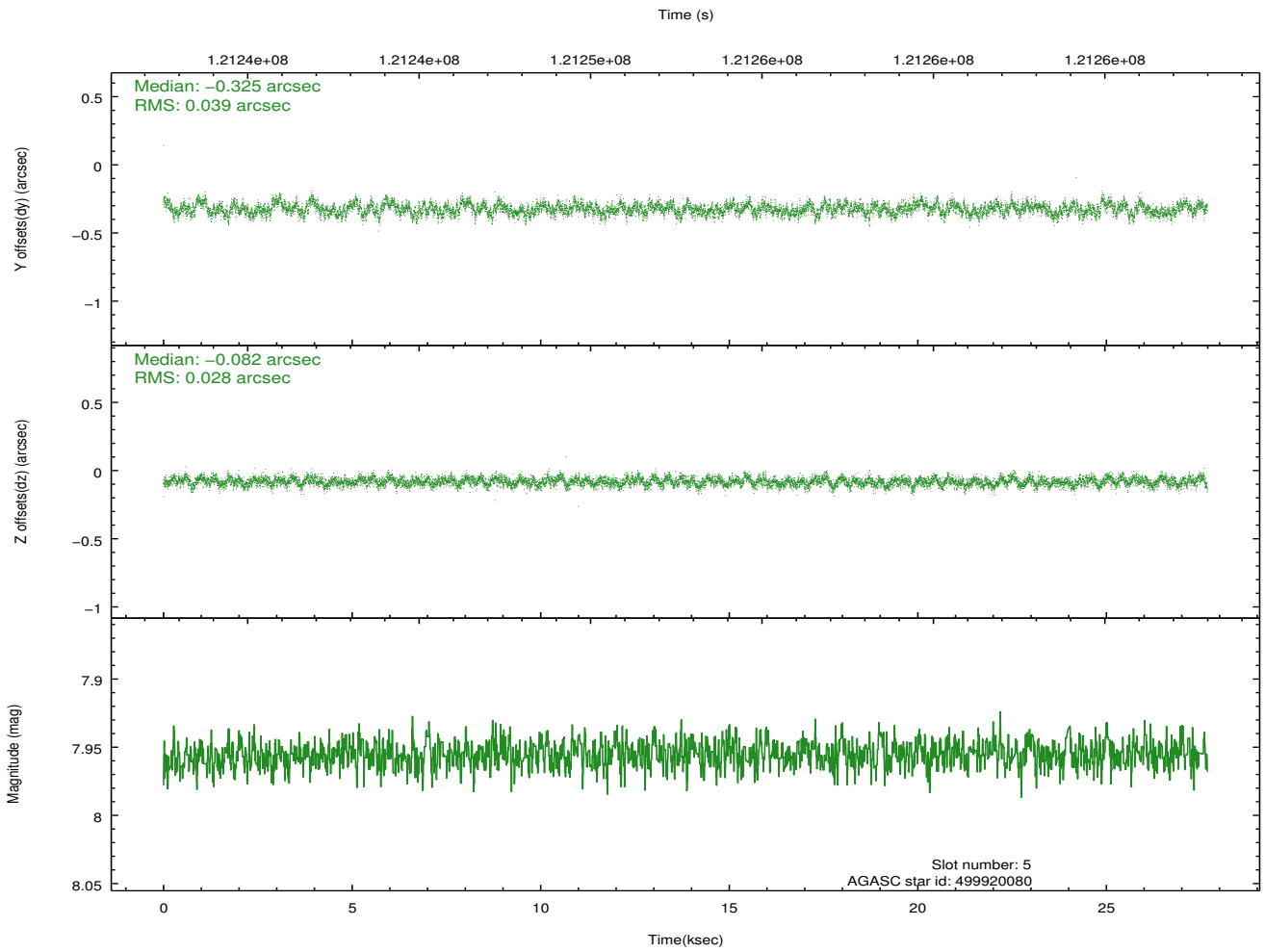
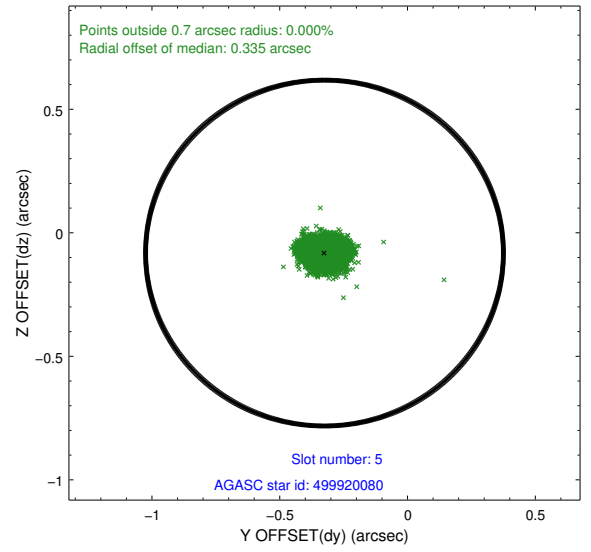
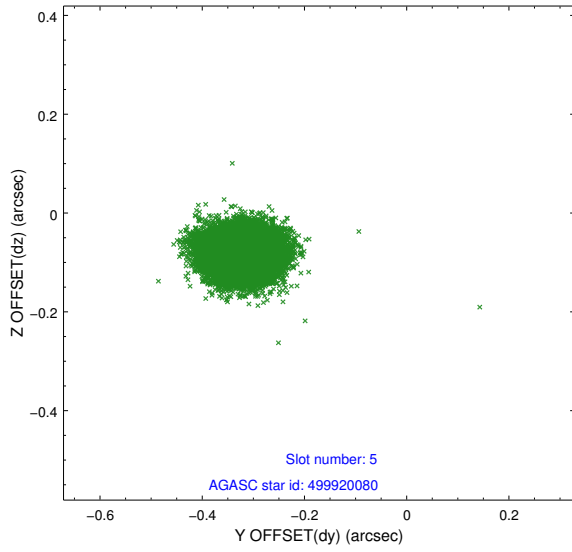
2.4.1 Slot 3



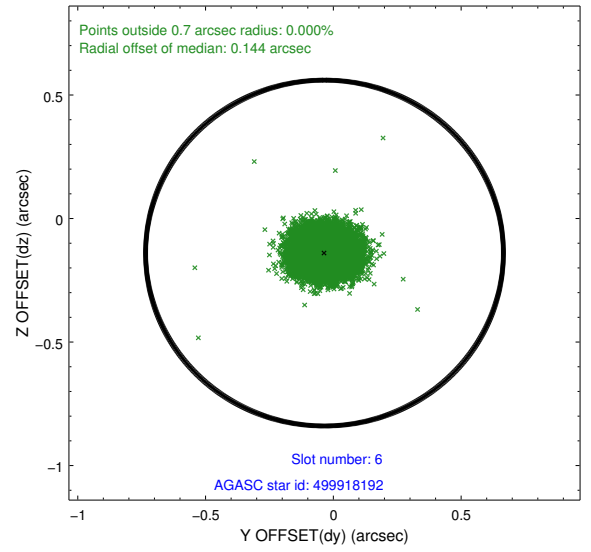
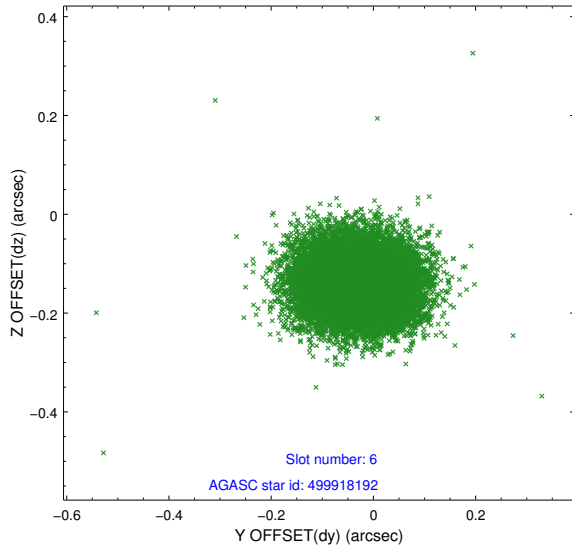
2.4.2 Slot 4



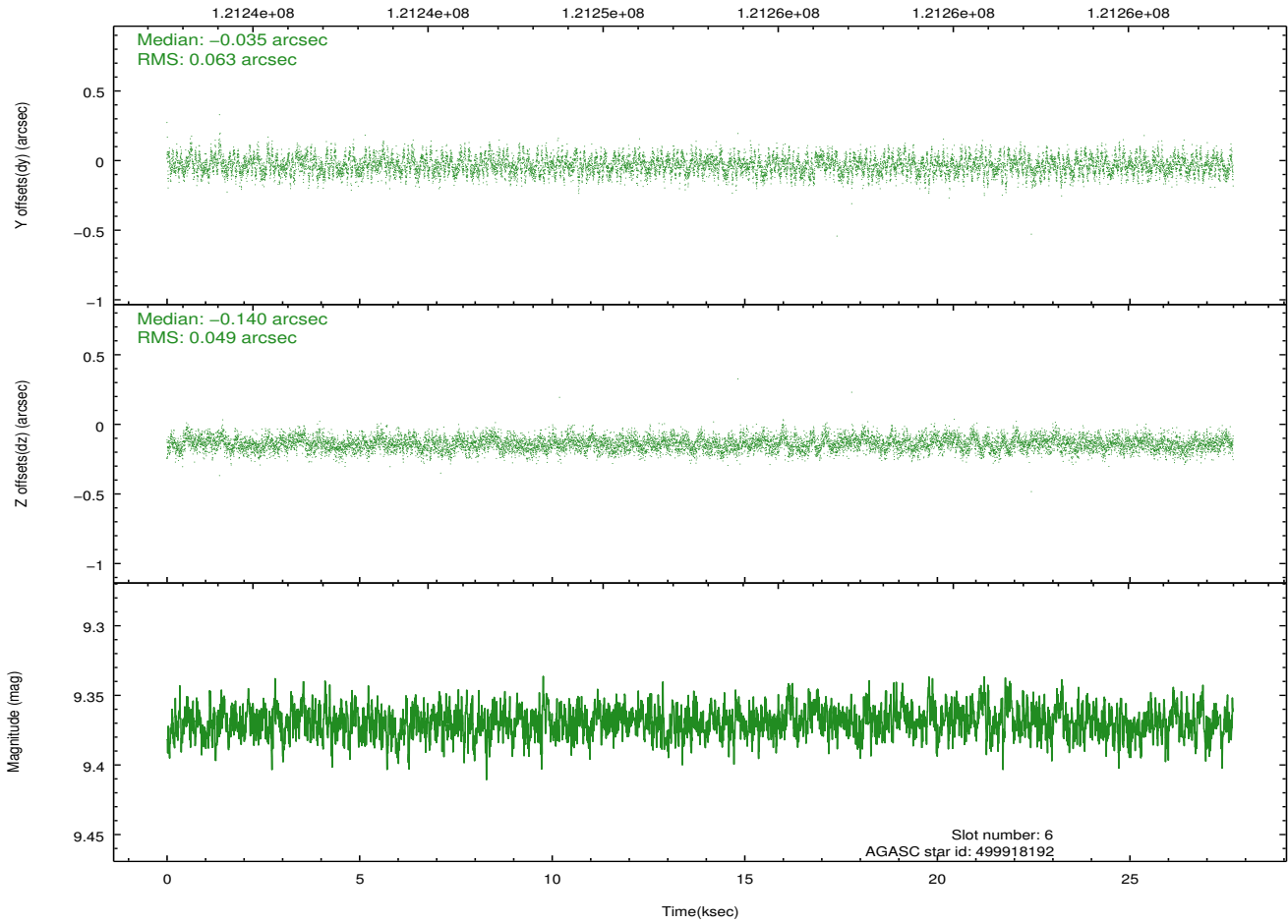
2.4.3 Slot 5



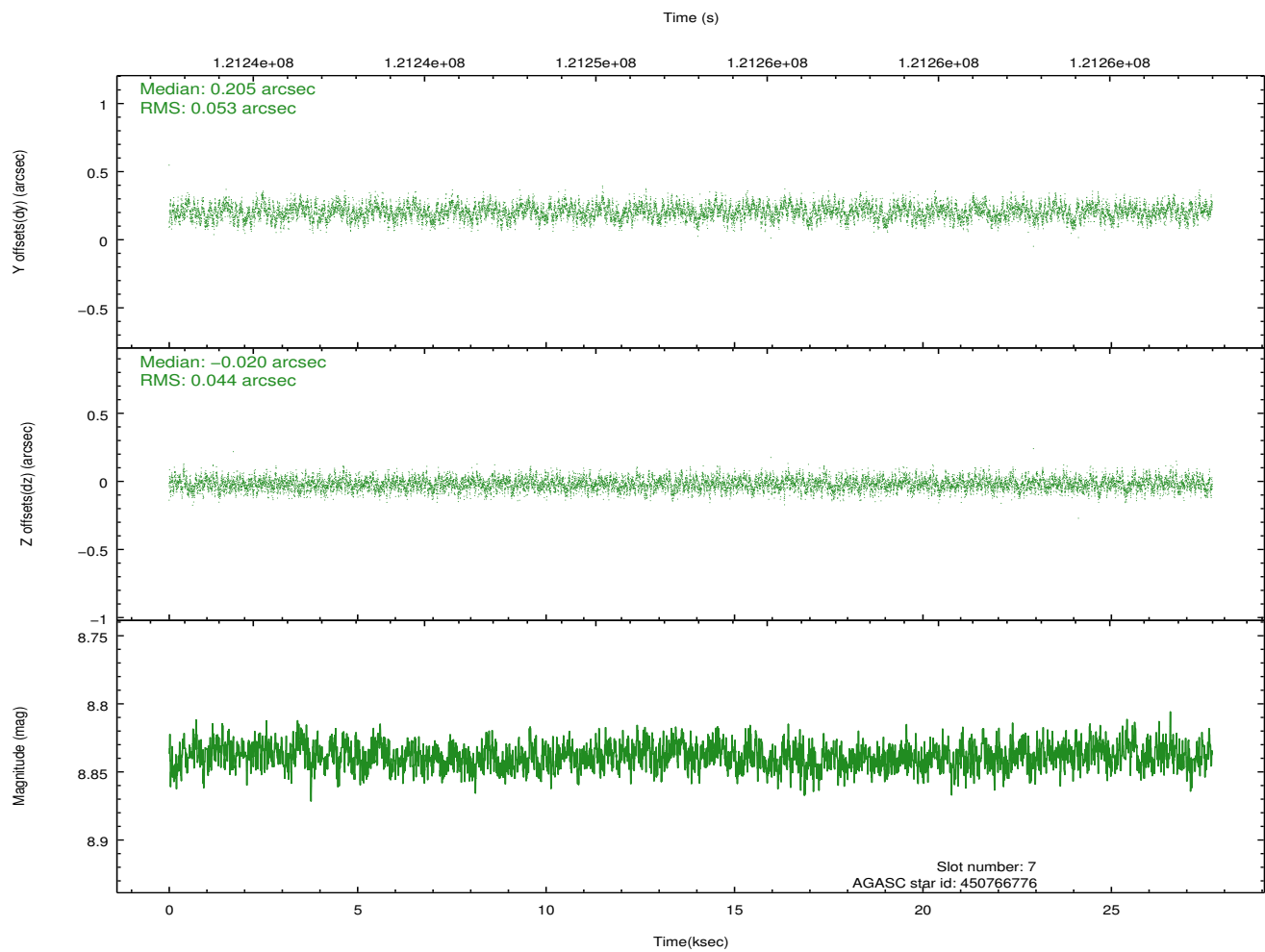
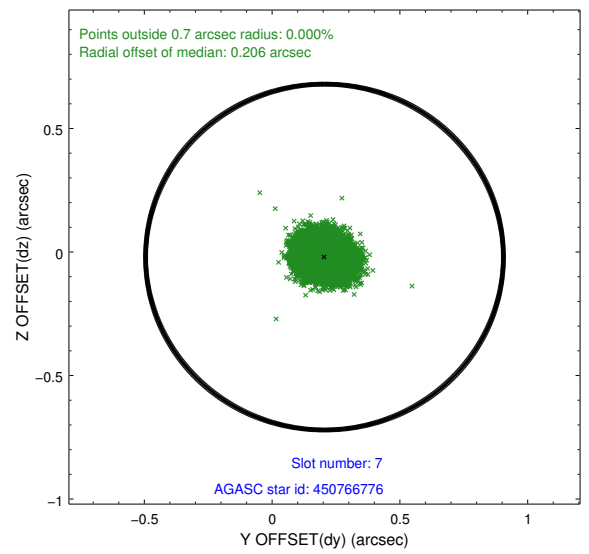
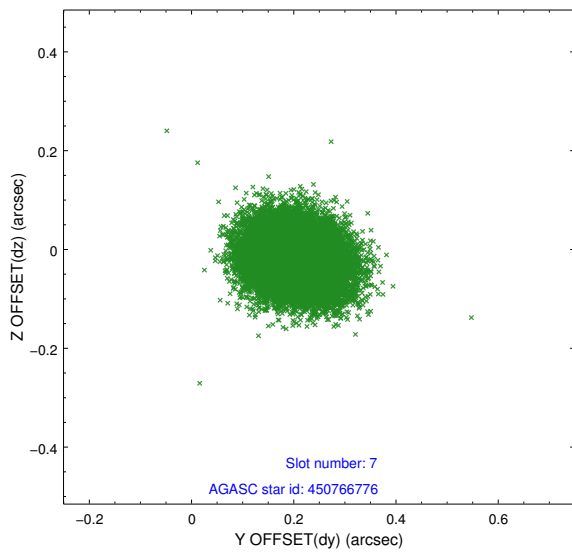
2.4.4 Slot 6



Time (s)

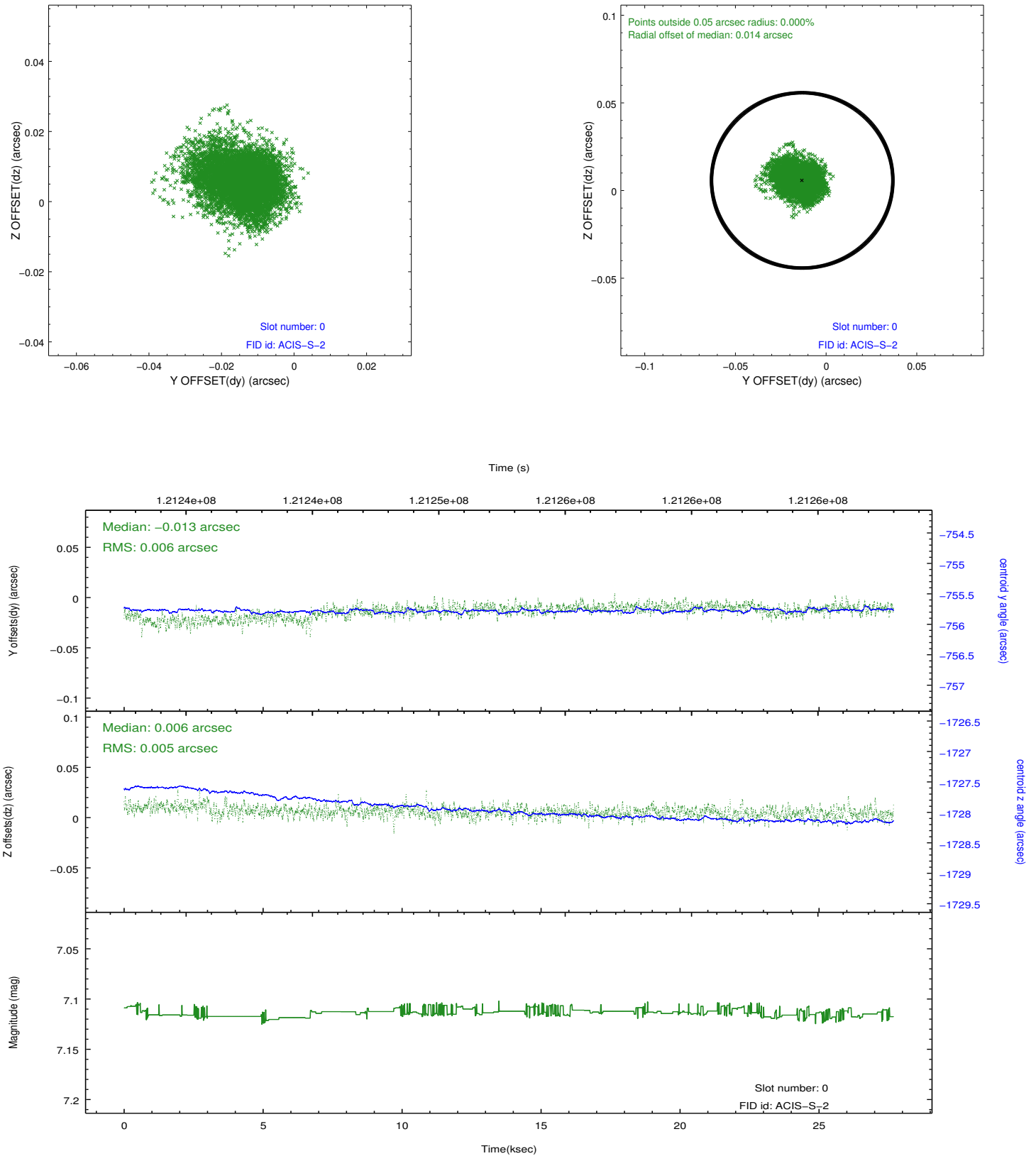


2.4.5 Slot 7

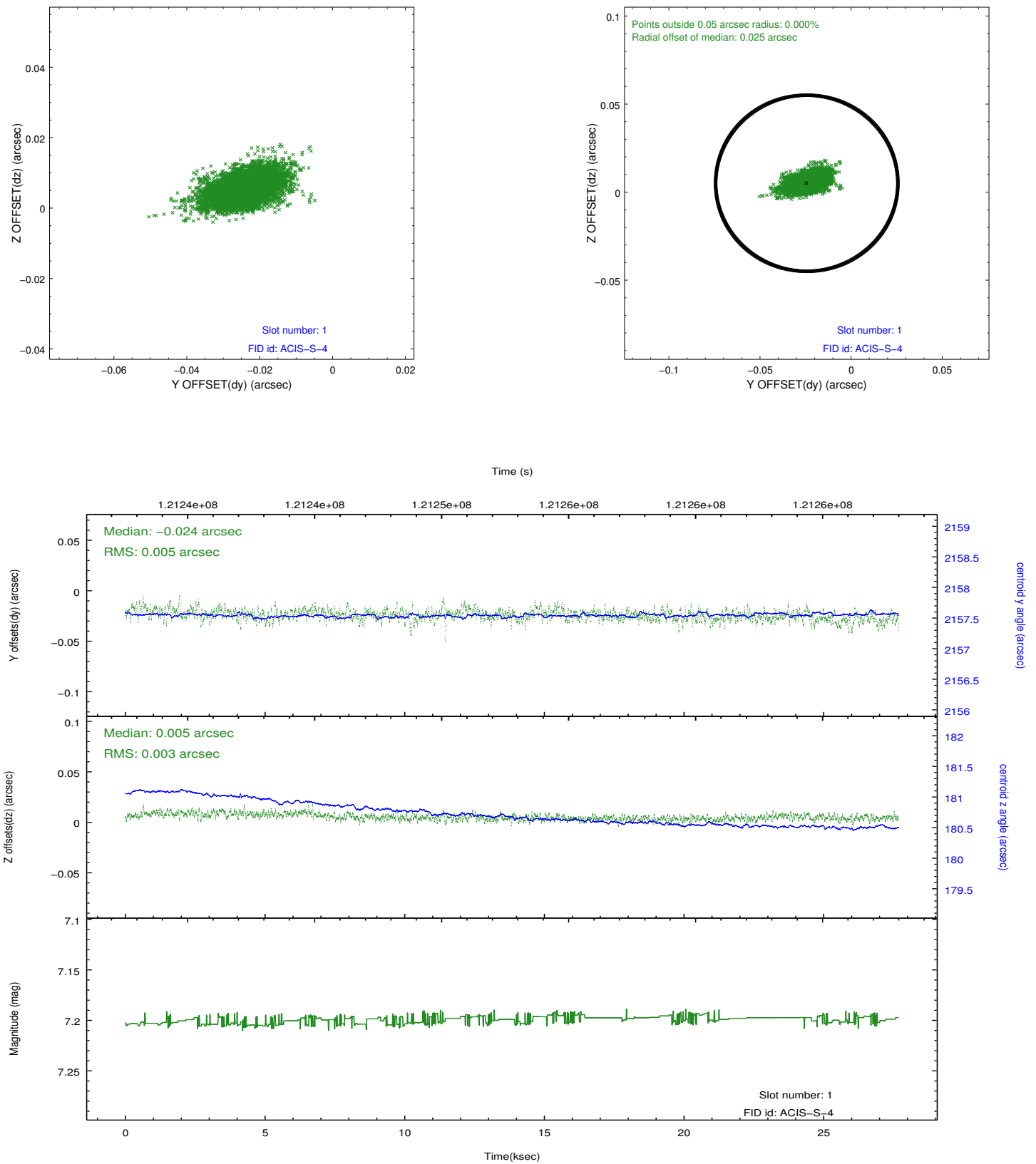


2.5 FID Slots

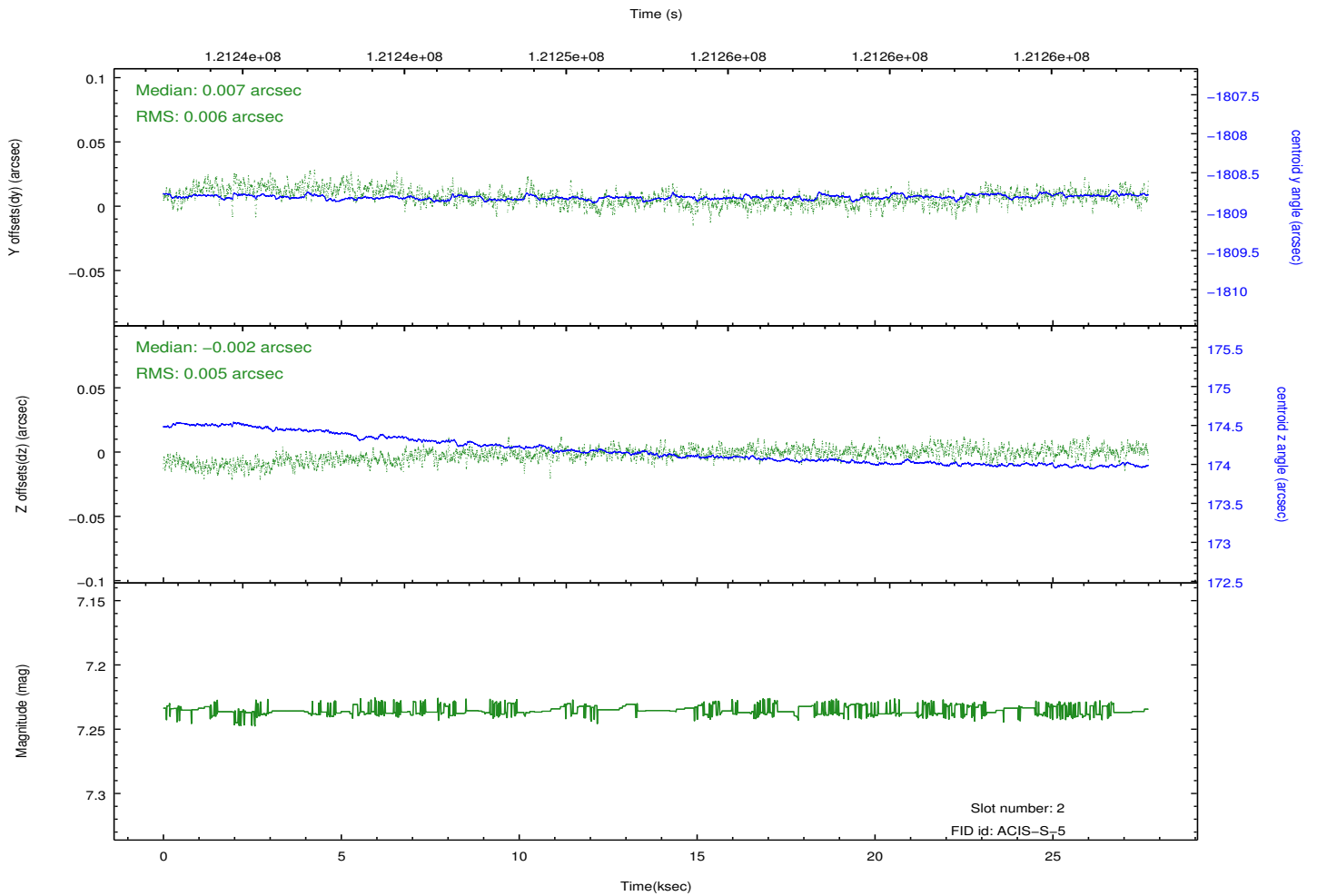
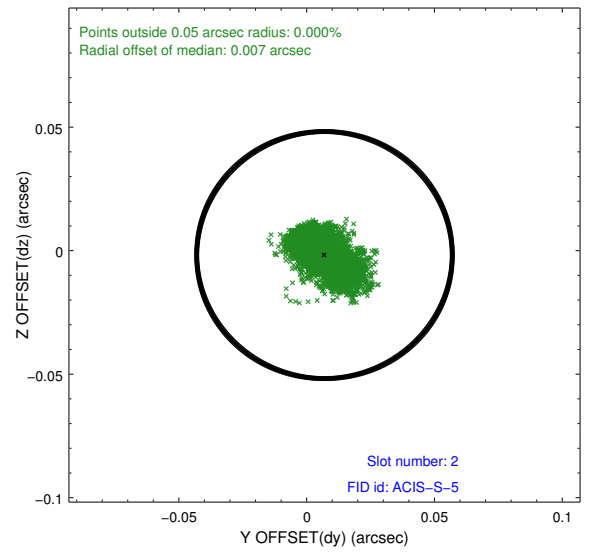
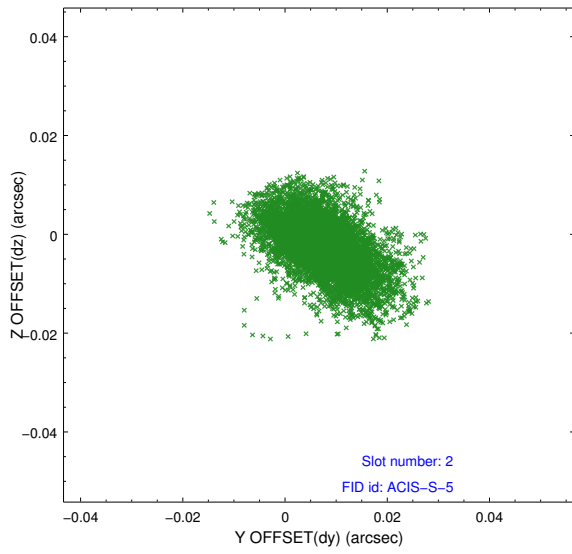
2.5.1 Slot 0



2.5.2 Slot 1



2.5.3 Slot 2



A Summary

A.1 Status

V&V Scientist	Beth Sundheim
V&V Date (YYYY-MM-DD)	2012.09.27
V&V Edition	1
V&V Disposition and Status	OK
V&V Charge Time	27.274

A.2 Comments

Joint proposal with HST.