

# V&V Reference Report

## L2 ASCDS Version : 8.4.5

Observation 3255 - L2 Version 3  
Chandra X-Ray Center

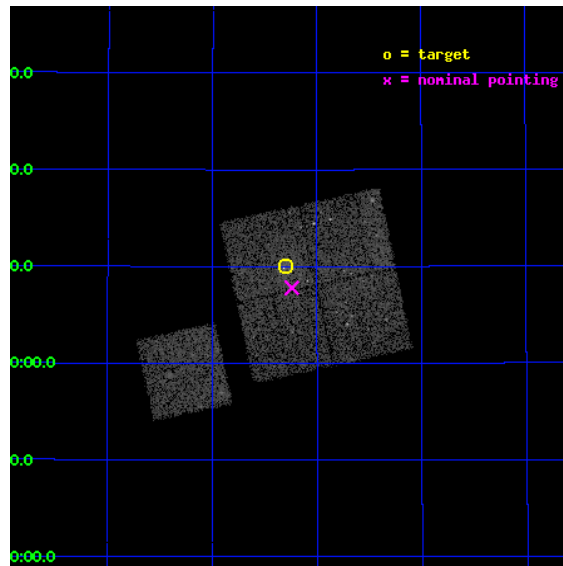
L2 Processing Date : Oct 14 2012

## Contents

<b>1</b>	<b>Front</b>	<b>2</b>
<b>2</b>	<b>OBI</b>	<b>3</b>
2.1	OBI . . . . .	3
2.1.1	Images . . . . .	3
2.1.2	Bias . . . . .	3
2.1.3	Parameters . . . . .	4
2.1.4	Events . . . . .	4
2.2	Compared Parameters . . . . .	5
2.3	Aspect . . . . .	6
2.4	Star Slots . . . . .	9
2.4.1	Slot 3 . . . . .	9
2.4.2	Slot 4 . . . . .	10
2.4.3	Slot 5 . . . . .	11
2.4.4	Slot 6 . . . . .	12
2.4.5	Slot 7 . . . . .	13
2.5	FID Slots . . . . .	14
2.5.1	Slot 0 . . . . .	14
2.5.2	Slot 1 . . . . .	15
2.5.3	Slot 2 . . . . .	16
<b>A</b>	<b>Summary</b>	<b>17</b>
A.1	Status . . . . .	17
A.2	Comments . . . . .	17

# 1 Front

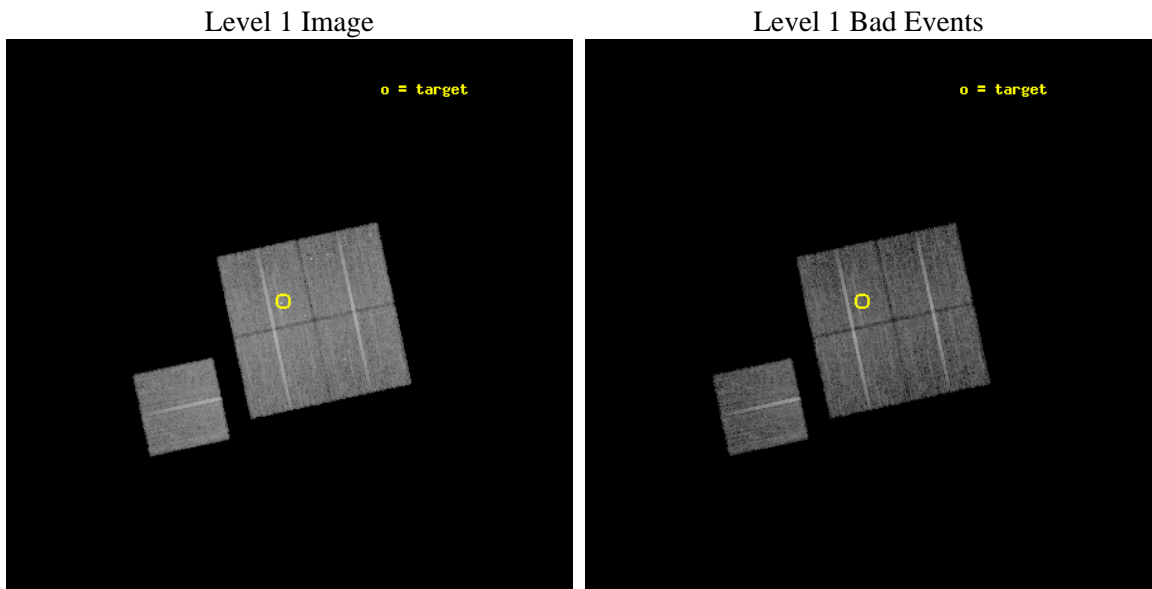
seq_num	800255	Sequence number
obs_id	3255	Observation id
title	OBSERVATION OF MACS CLUSTERS, 0.45	Proposal titl
observer	DR. LEON VANSPEYBROECK	Principal investigator
object	MACS-J1824.3+4309	Source name
dtycle	0	&#160
cycle	P	events from which exps? Prim/Second/Both
ra_targ	276.073333	Observer's specified target RA [deg]
dec_targ	43.166389	Observer's specified target Dec [deg]
ra_nom	276.05989459223	Nominal RA [deg]
dec_nom	43.130008223953	Nominal Dec [deg]
roll_nom	257.86482734641	Nominal Roll [deg]
revision	3	Processing version of data
ontime	15118.699970901	Sum of GTIs [s]
livetime	14921.163025556	Livetime [s]
ontime0	15115.558980793	Sum of GTIs [s]
ontime1	15118.699970901	Sum of GTIs [s]
ontime2	15118.699970901	Sum of GTIs [s]
ontime3	15118.699970901	Sum of GTIs [s]
ontime6	15112.418040425	Sum of GTIs [s]
l2events	37360	Number of level 2 events



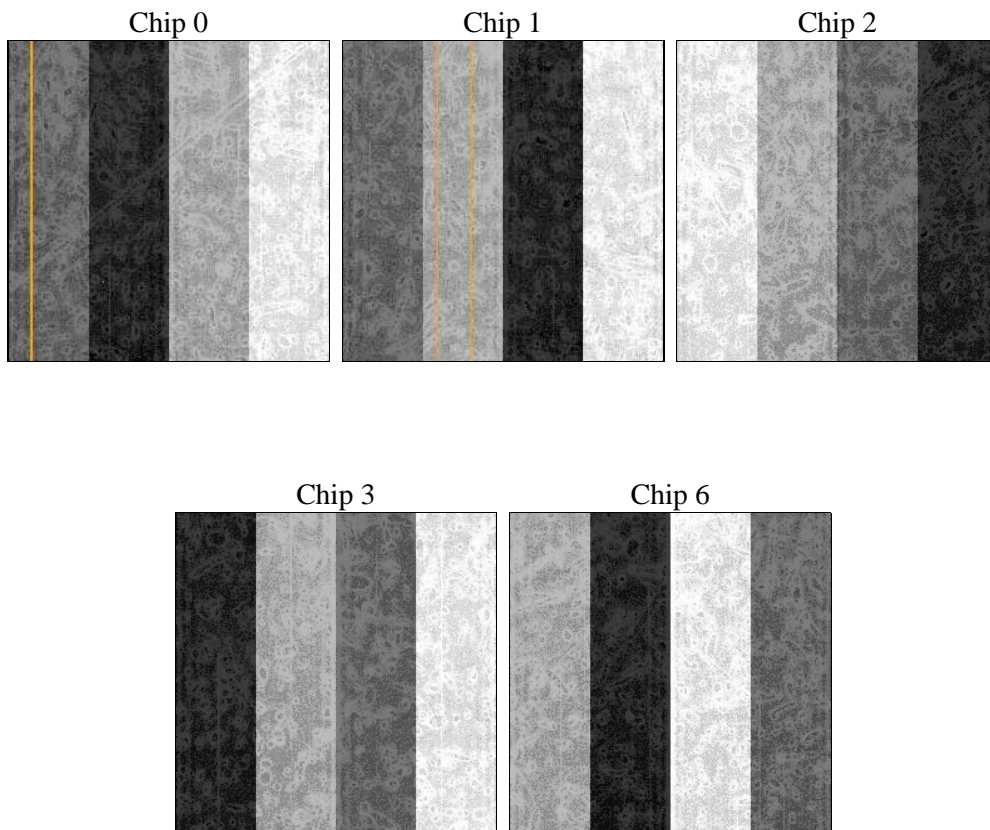
## 2 OBI

### 2.1 OBI

#### 2.1.1 Images



#### 2.1.2 Bias



### 2.1.3 Parameters

obi_num	1	Obi number	sched_exp_time	15000.000000	[s] Scheduled observation exposure time
ascdsver	8.4.5	Processing system revision	ontime	15118.699970901	Sum of GTIs [s]
caldbver	4.5.2	&#160	ontime0	15115.558980793	Sum of GTIs [s]
date	2012-10-14T18:09:07	Date and time of file creation	ontime1	15118.699970901	Sum of GTIs [s]
revision	3	Processing version of data	ontime2	15118.699970901	Sum of GTIs [s]
			ontime3	15118.699970901	Sum of GTIs [s]
			ontime6	15112.418040425	Sum of GTIs [s]
			l1events	398722	Number of level 1 events

### 2.1.4 Events

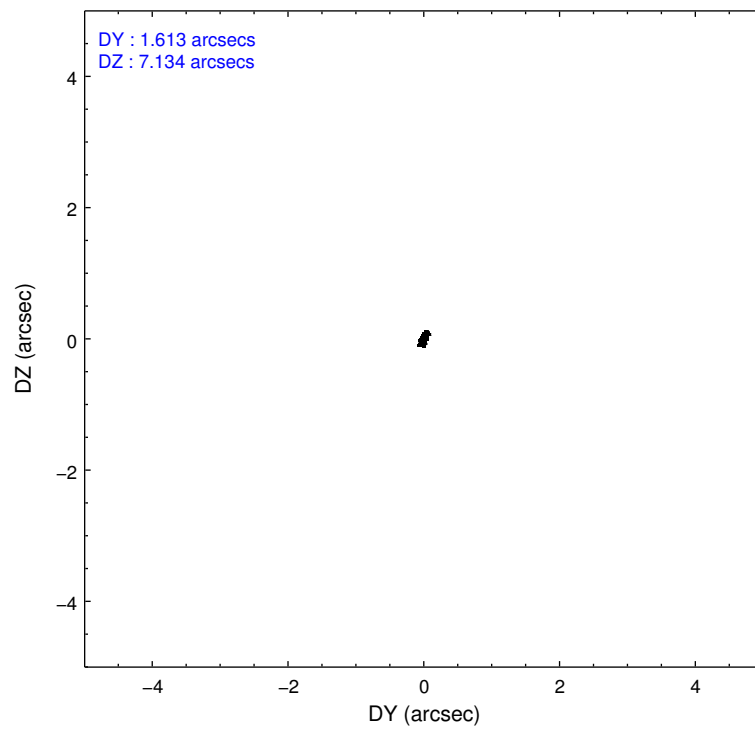
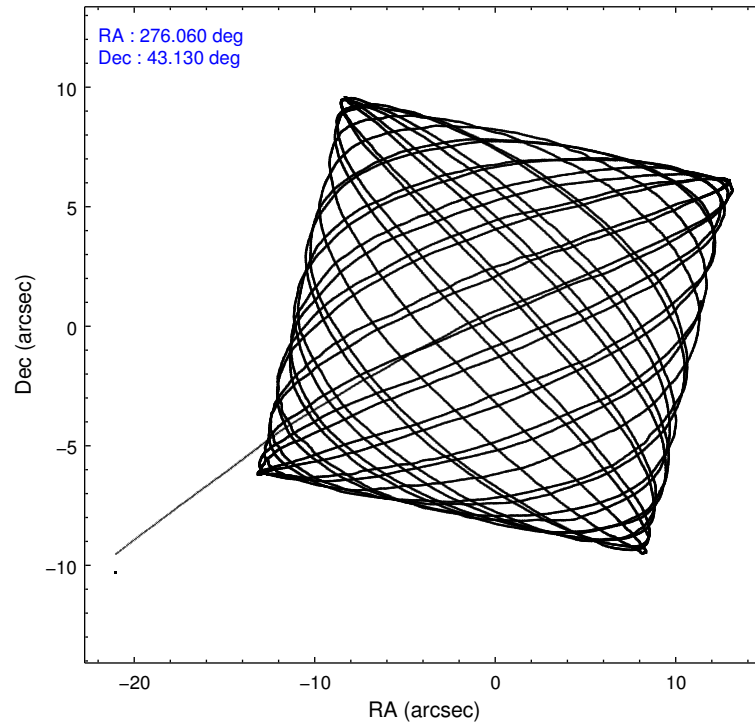
	ccd 0	ccd 1	ccd 2	ccd 3	ccd 6
level 1 events	75196	75351	84402	83014	80759
rejected events	66834	65651	76605	72765	72459
rejected %	88%	87%	90%	87%	89%

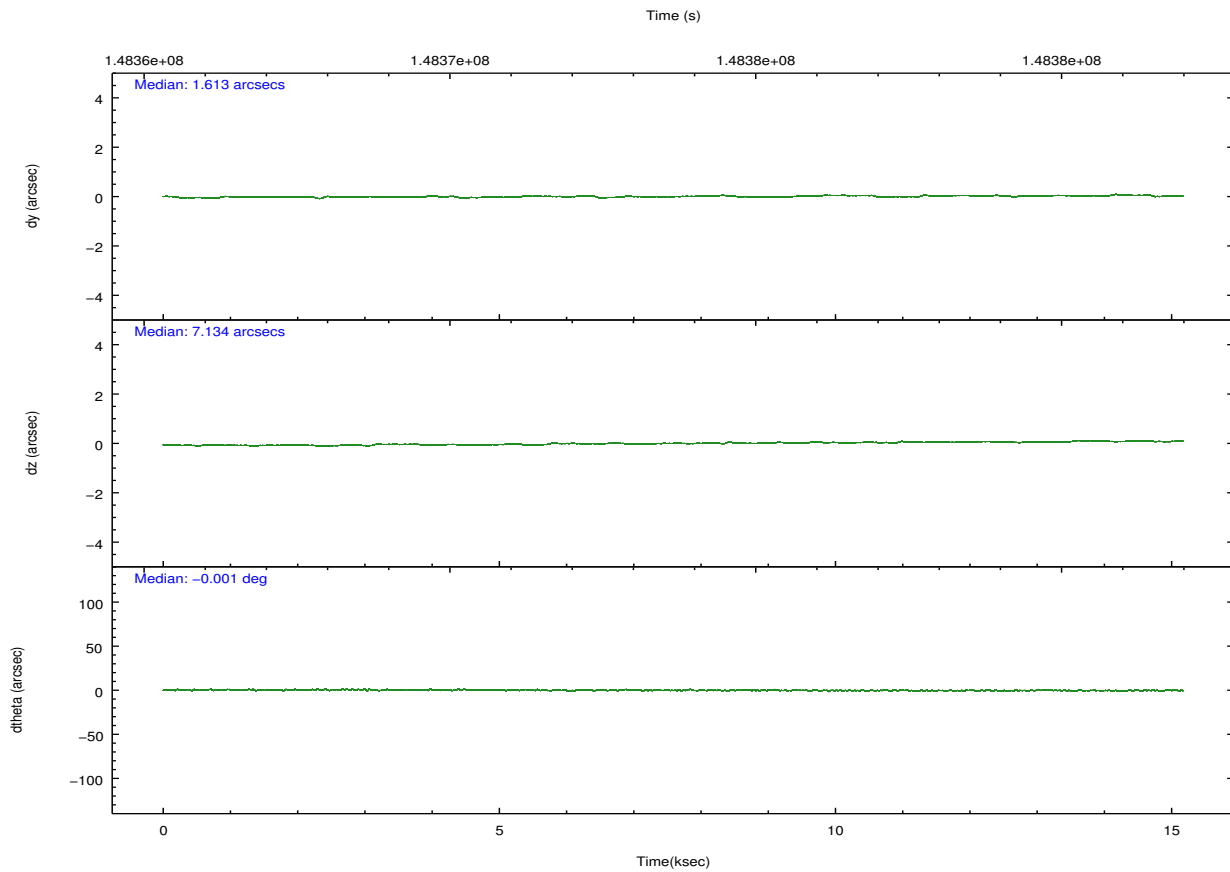
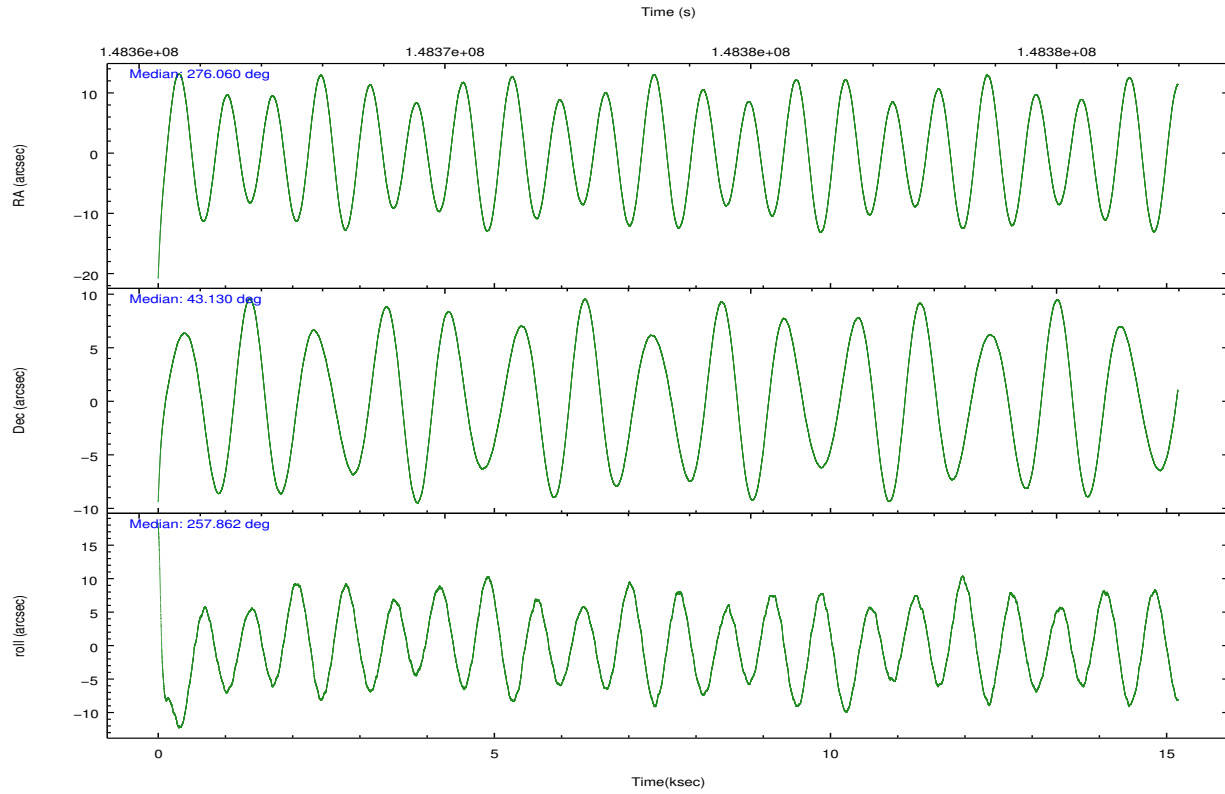
	ccd 0	ccd 1	ccd 2	ccd 3	ccd 6
grade 0 events	3195	4021	2993	5110	3031
	4%	5%	3%	6%	3%
grade 1 events	36	46	38	105	34
	0%	0%	0%	0%	0%
grade 2 events	1803	1892	1697	1758	1707
	2%	2%	2%	2%	2%
grade 3 events	981	1041	885	959	932
	1%	1%	1%	1%	1%
grade 4 events	876	998	884	967	925
	1%	1%	1%	1%	1%
grade 5 events	2681	2845	2597	3011	3101
	3%	3%	3%	3%	3%
grade 6 events	1508	1750	1340	1461	1707
	2%	2%	1%	1%	2%
grade 7 events	64116	62758	73968	69643	69322
	85%	83%	87%	83%	85%

## 2.2 Compared Parameters

Parameter	Planned	Actual	Parameter	Planned	Actual
Instrument	ACIS	ACIS	Obspar format version number	7	7
Detector	ACIS-01236	ACIS-01236	Obspar file type	PREDICTED	ACTUAL
Grating	NONE	NONE	Obspar update status	NONE	UPDATED
Data mode	VFAINT	VFAINT	Number of optional ACIS chips dropped	0	0
Observation mode	POINTING	POINTING	On-chip summing requested	N	N
[deg] Pointing RA	276.048247	276.0598945922289	Subarray requested	NONE	NONE
[deg] Pointing Dec	43.156060	43.13000822395334	Alternating exposures requested	N	N
[deg] Pointing Roll	257.664095	257.8648273464082	[s] Primary exposure time	0.000000	3.1
[mm] SIM focus pos	-0.782348	-0.7809083437167272			
[mm] SIM defocus	0	0.001439871863259334			
[mm] SIM translation stage pos	-227.742463	-227.734108438797			
[mm] SIM translation stage offset	-5.85	-5.858344564132665			
[s] Observation start time (MET)	148366231.184000	148365262.72641			
Observation start date	2002-09-14T04:49:27	2002-09-14T04:34:22			
[s] Observation end time (MET)	148381231.184000	148381922.0521			
Observation end date	2002-09-14T08:59:27	2002-09-14T09:12:02			
Read mode	TIMED	TIMED			

## 2.3 Aspect



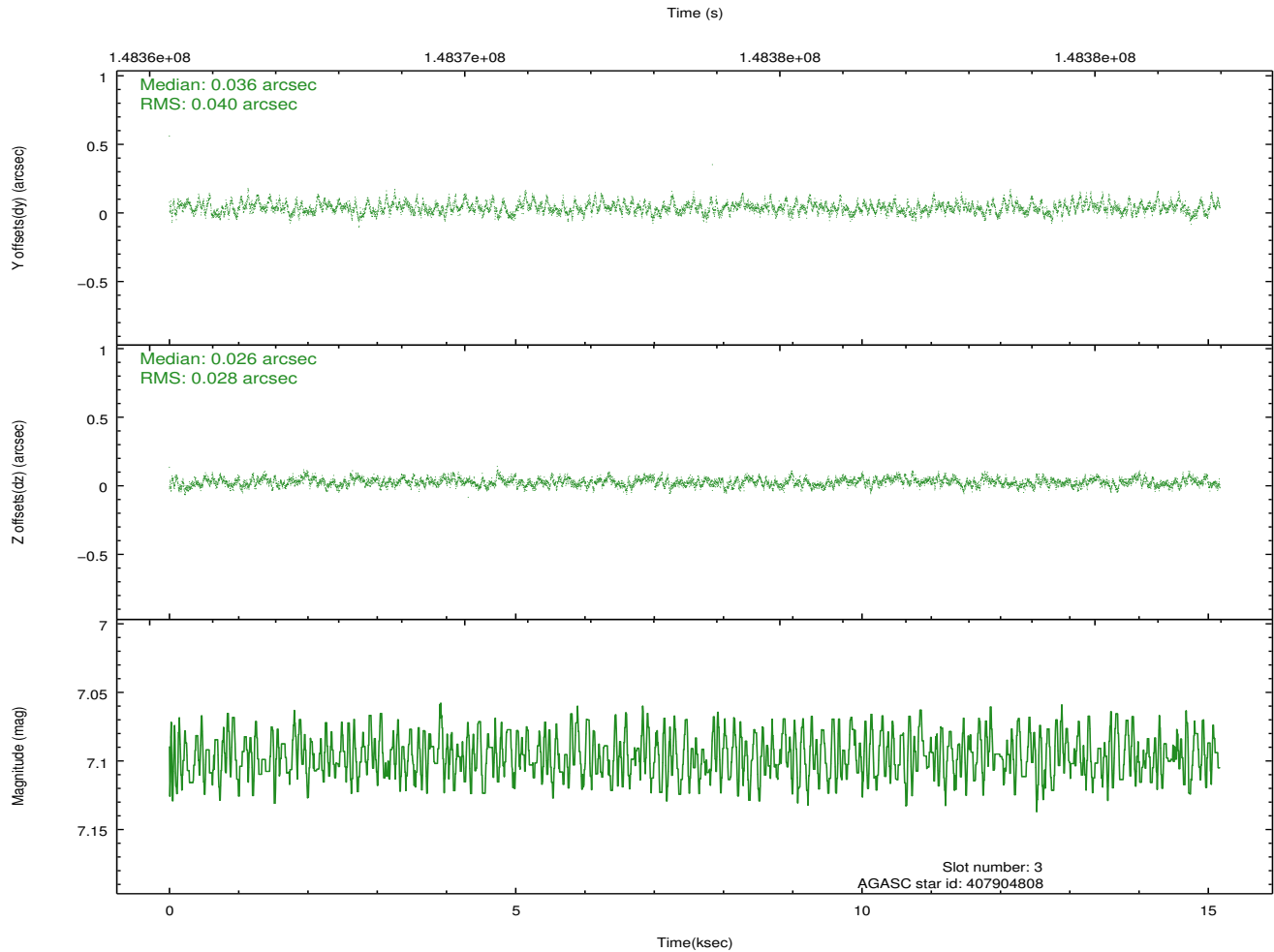
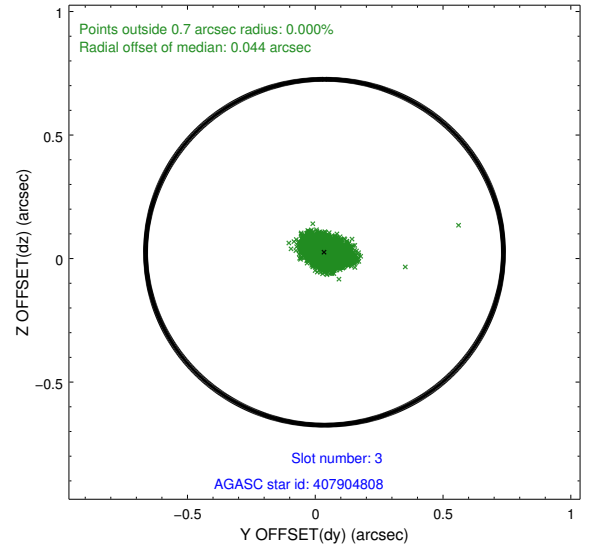
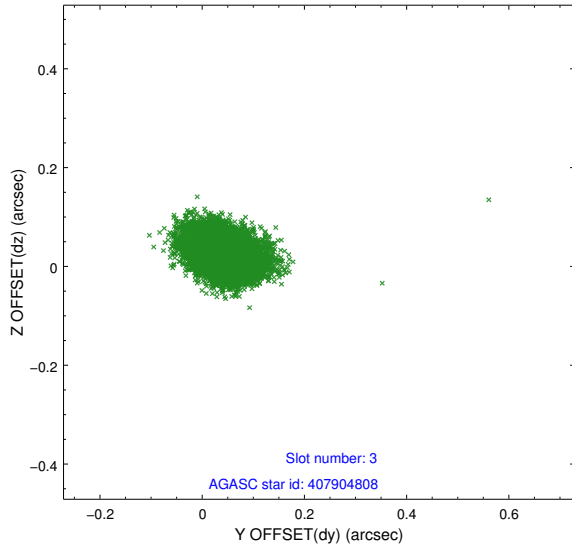


### Slot Statistics

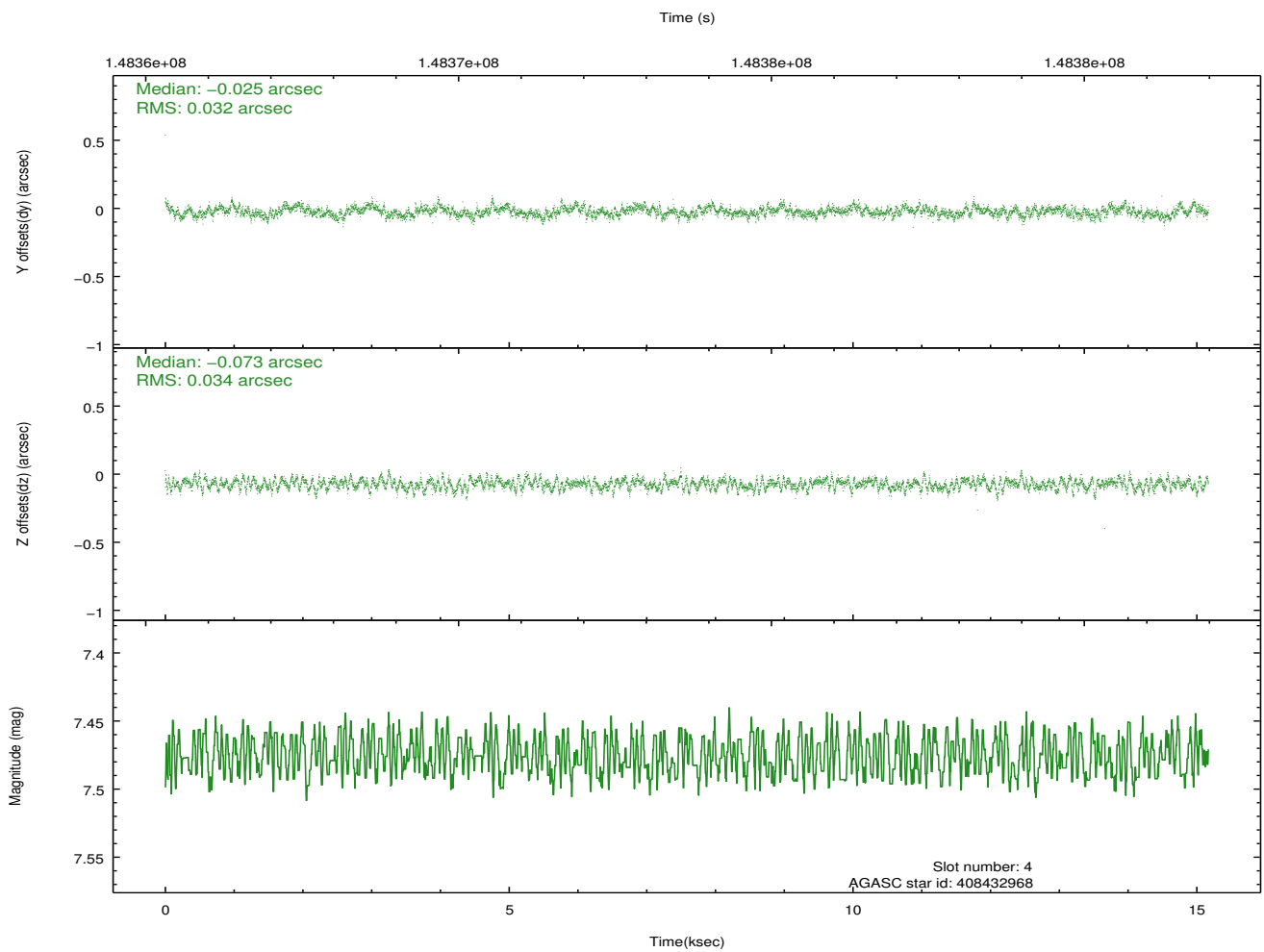
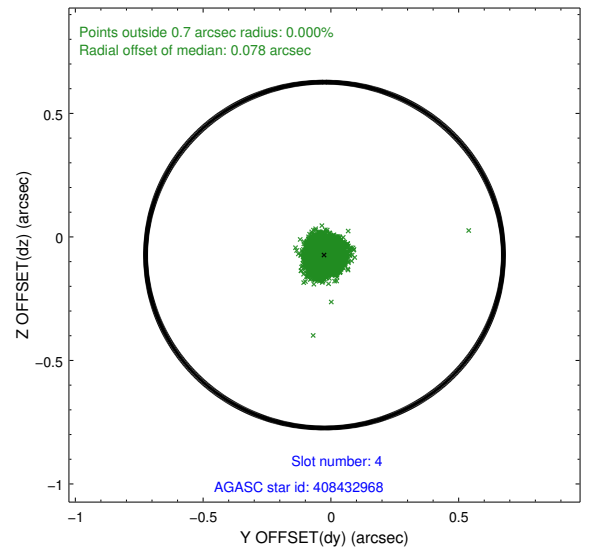
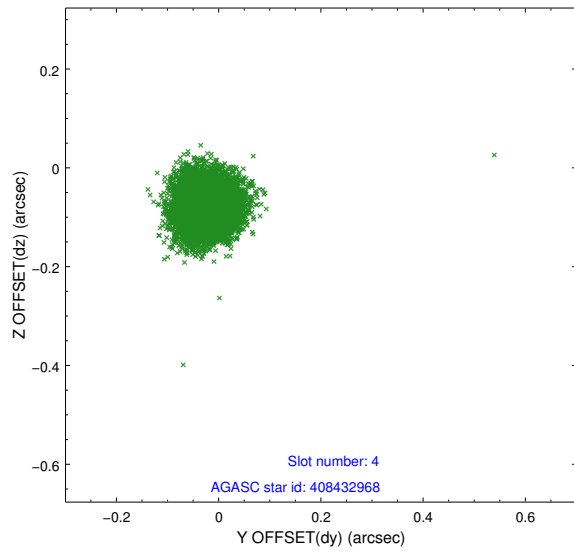
slot	status	id	mag	n_pts	med_dy	med_dz	dr1	dr2	ra	dec	mean_y	mean_z
0	FID	ACIS-I-1	7.25	3700	0.049	0.005	0.007	0.011	0.000000	0.000000	938.14	-950.78
1	FID	ACIS-I-5	7.24	3700	-0.142	0.079	0.007	0.011	0.000000	0.000000	-1809.96	946.65
2	FID	ACIS-I-6	7.25	3700	0.002	-0.014	0.007	0.012	0.000000	0.000000	403.36	1591.37
3	GUIDE	407904808	7.10	7401	0.036	0.026	0.051	0.086	276.045617	42.466908	2426.03	524.00
4	GUIDE	408432968	7.48	7401	-0.025	-0.073	0.049	0.080	275.637620	43.449053	-802.55	-1273.74
5	GUIDE	407902872	8.82	7396	0.018	0.025	0.070	0.112	276.534956	42.710874	1287.69	1599.90
6	GUIDE	408425144	8.57	7400	-0.005	-0.000	0.063	0.102	275.775172	43.656441	-1607.92	-1079.19
7	GUIDE	408433224	8.99	7399	-0.023	0.027	0.082	0.129	275.430475	43.588301	-1181.19	-1906.99

## 2.4 Star Slots

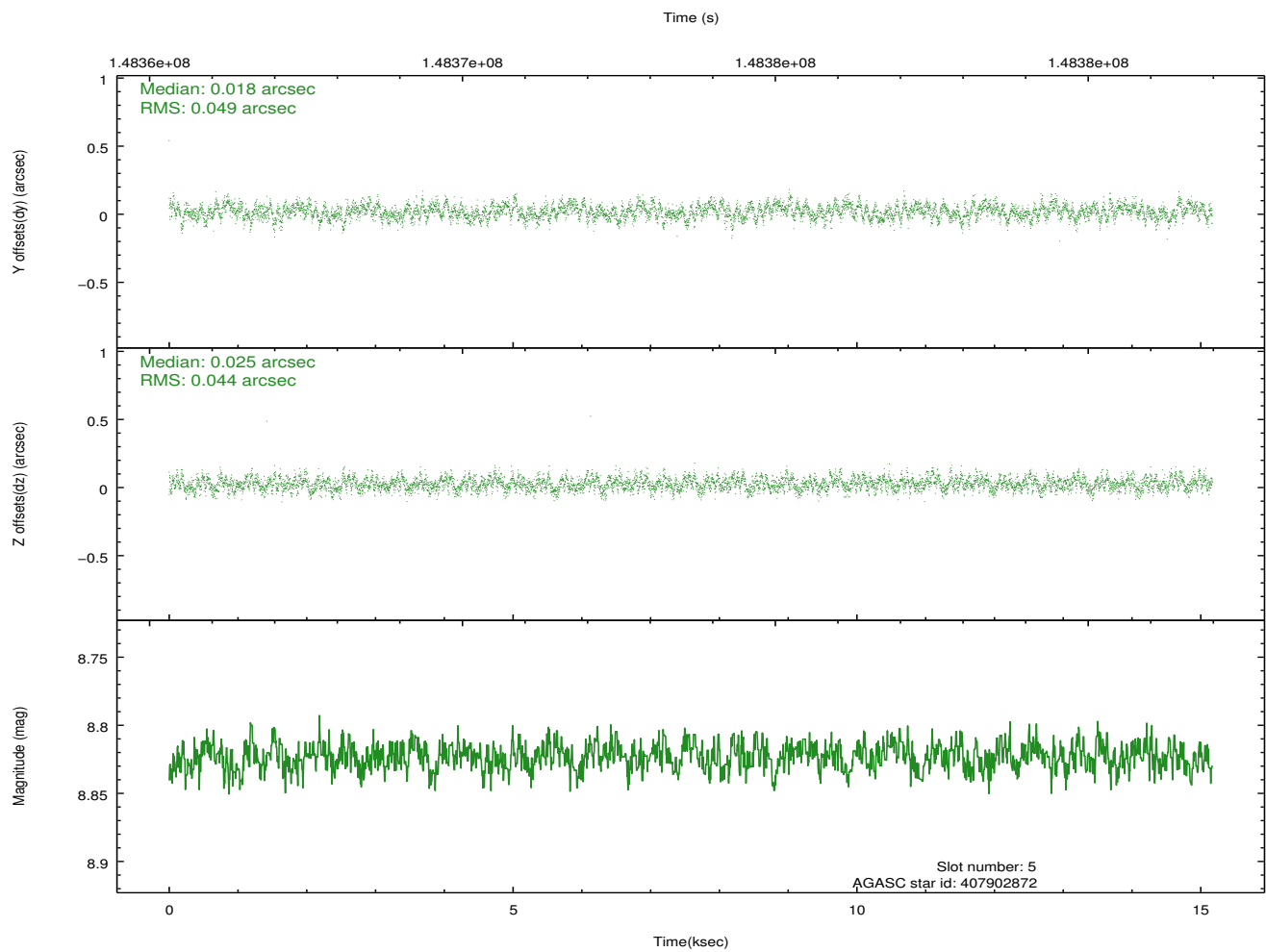
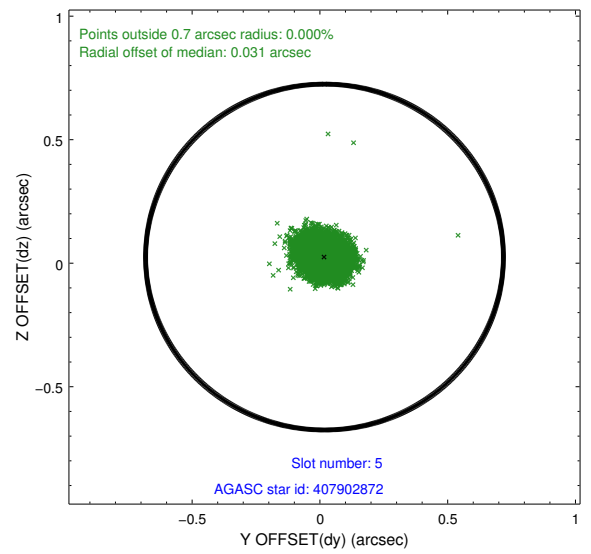
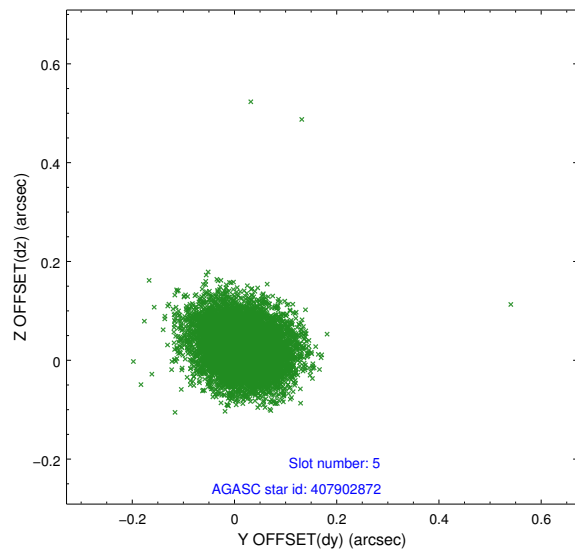
### 2.4.1 Slot 3



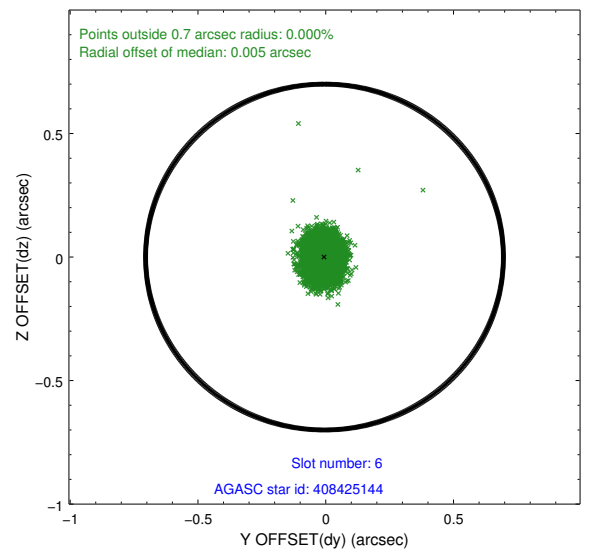
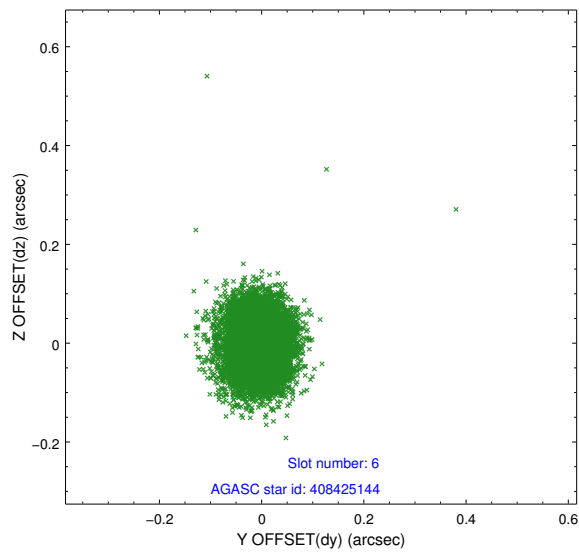
## 2.4.2 Slot 4



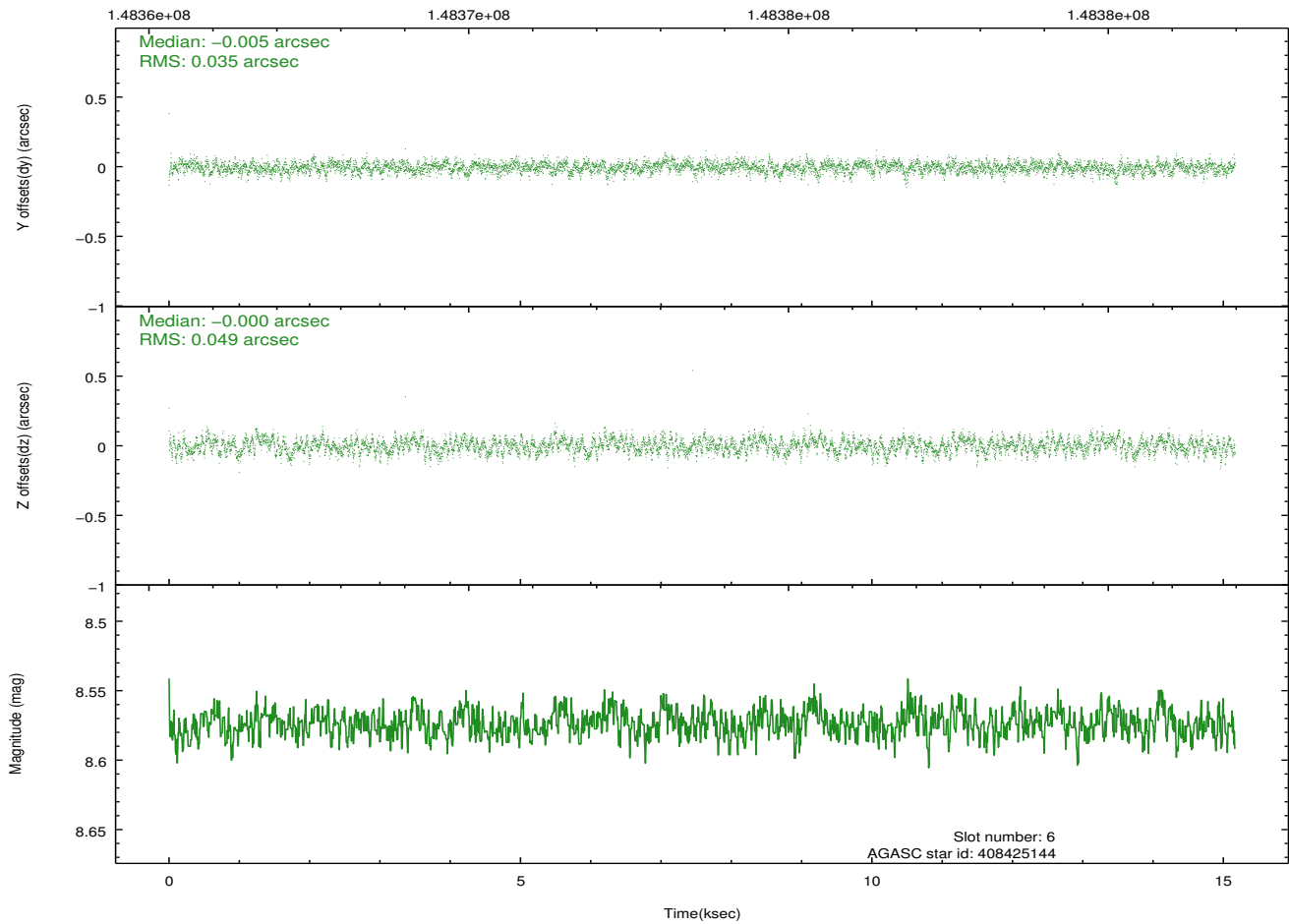
### 2.4.3 Slot 5



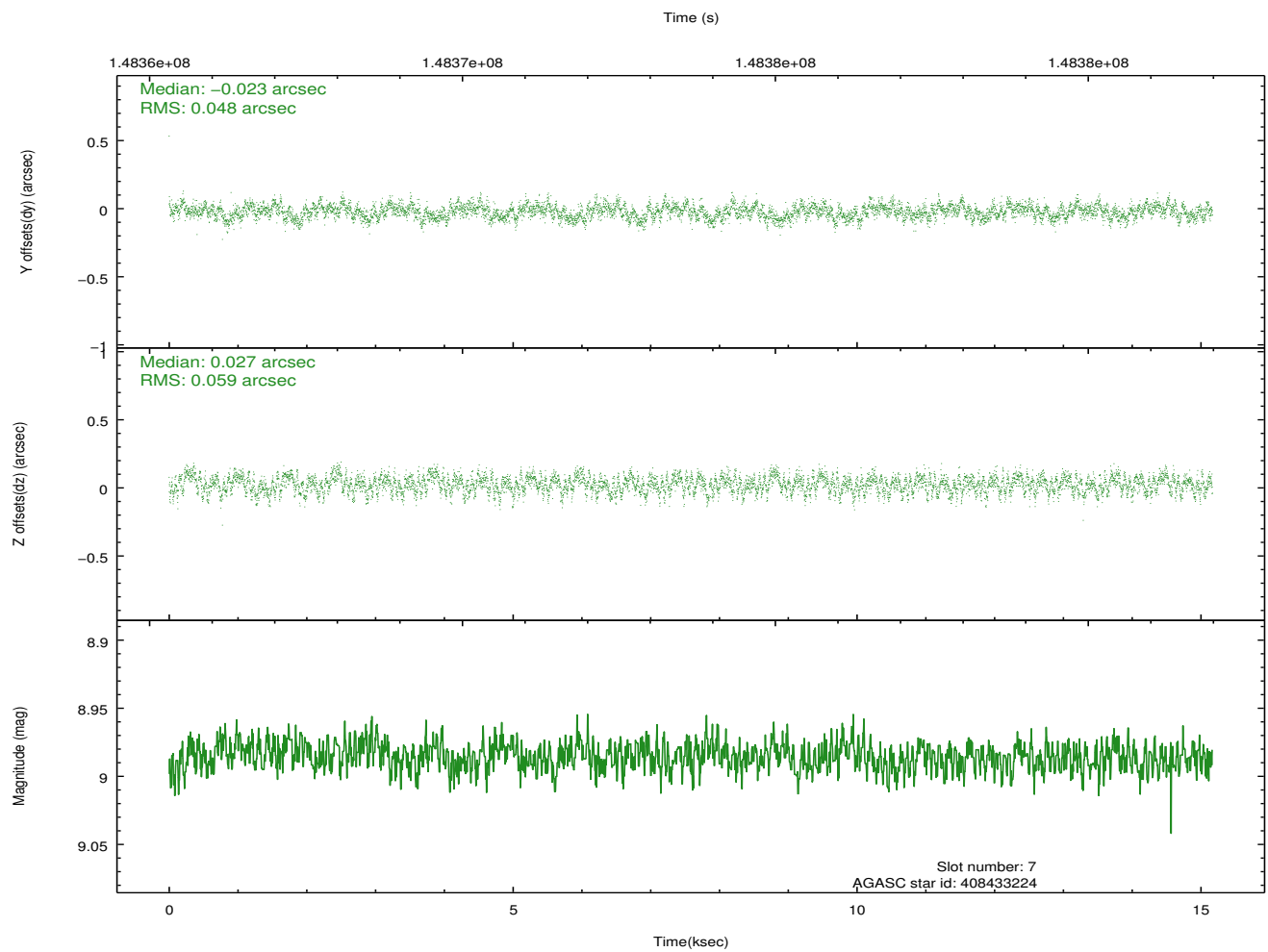
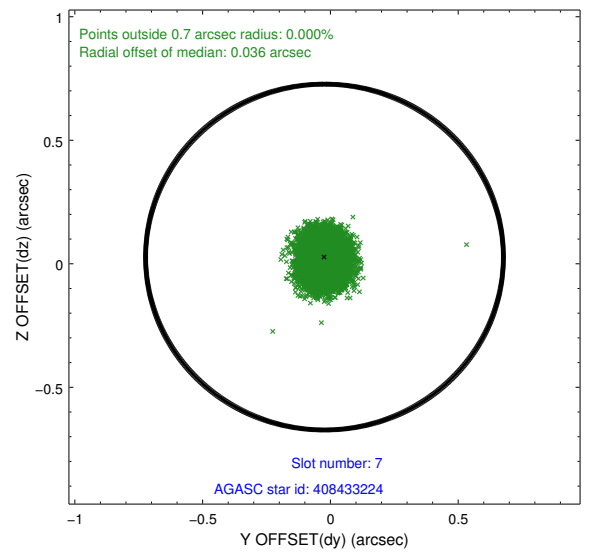
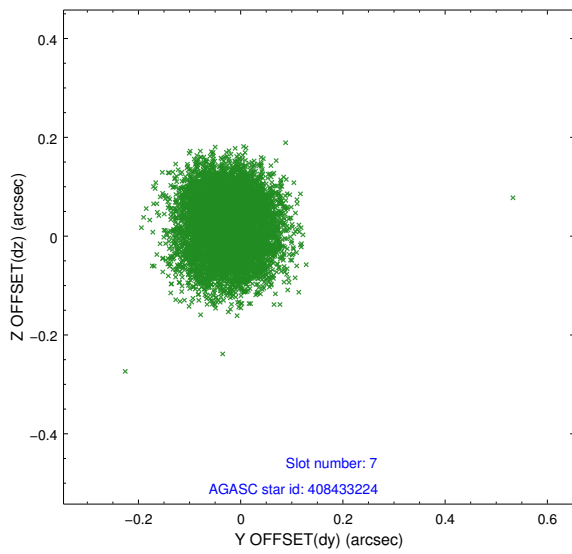
## 2.4.4 Slot 6



Time (s)

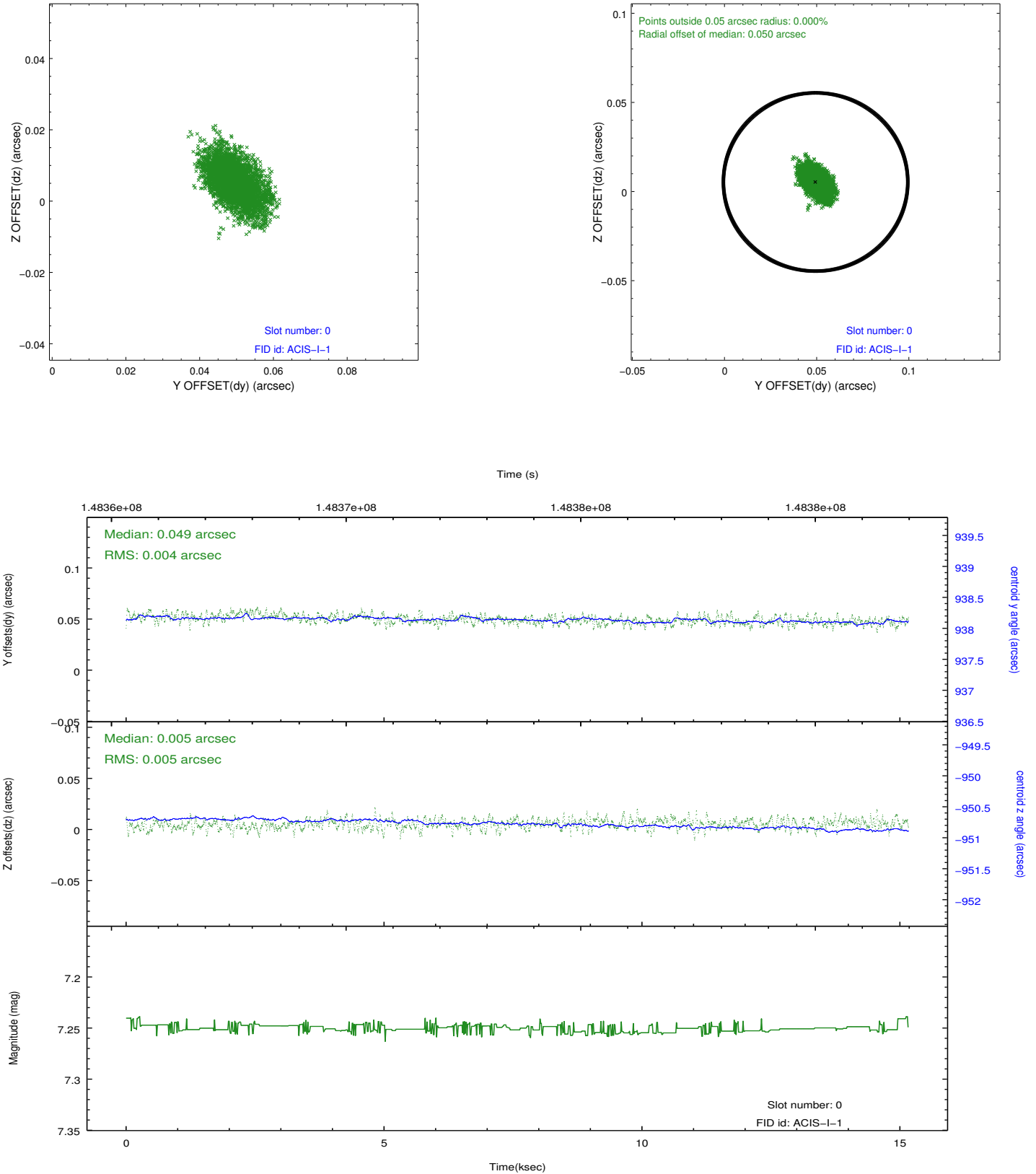


## 2.4.5 Slot 7

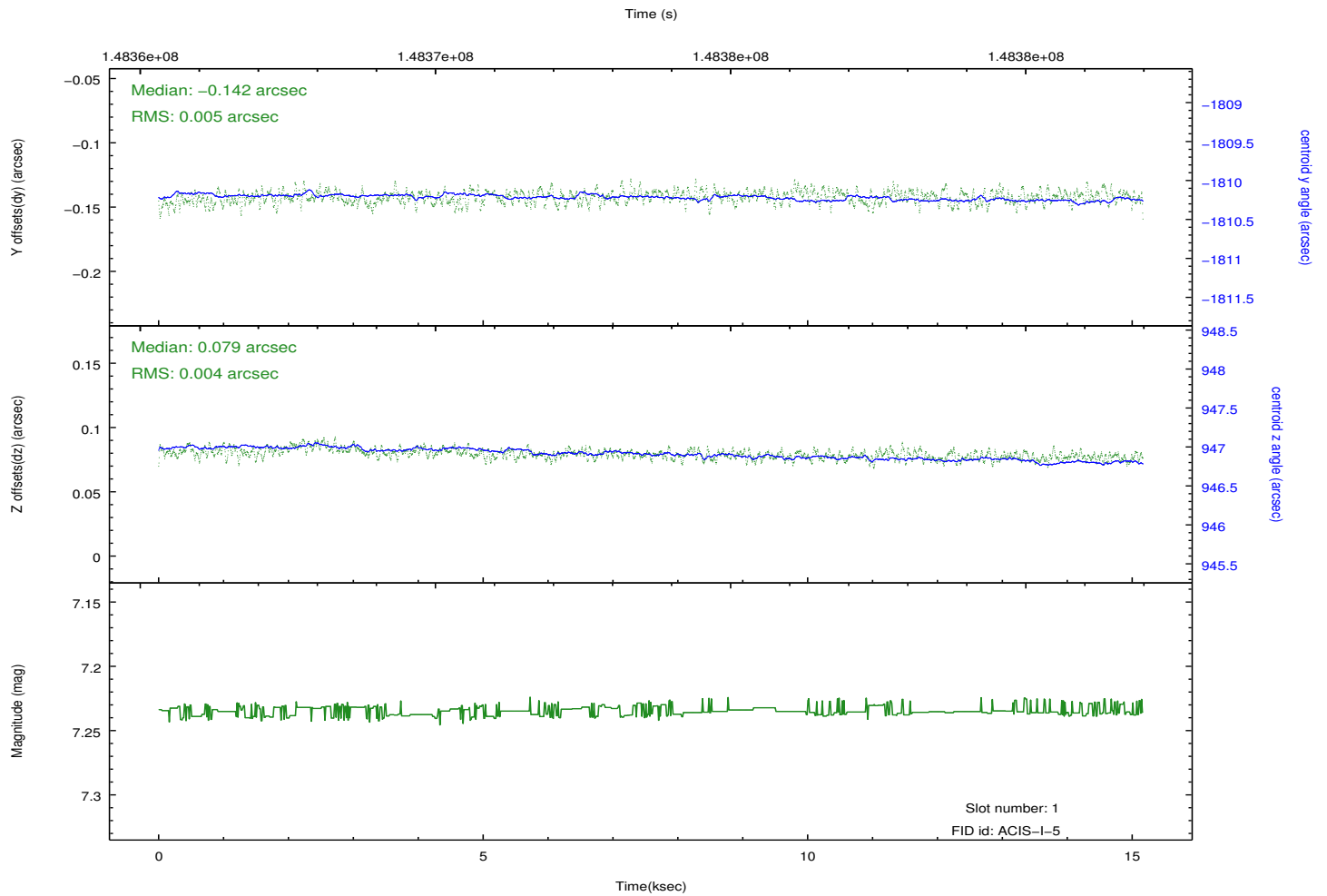
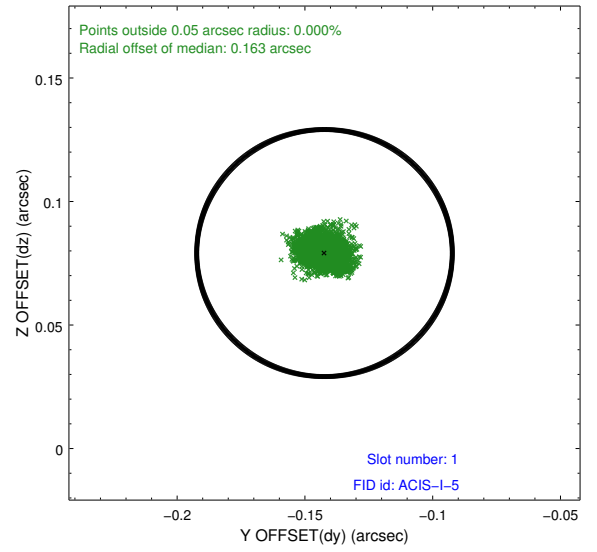
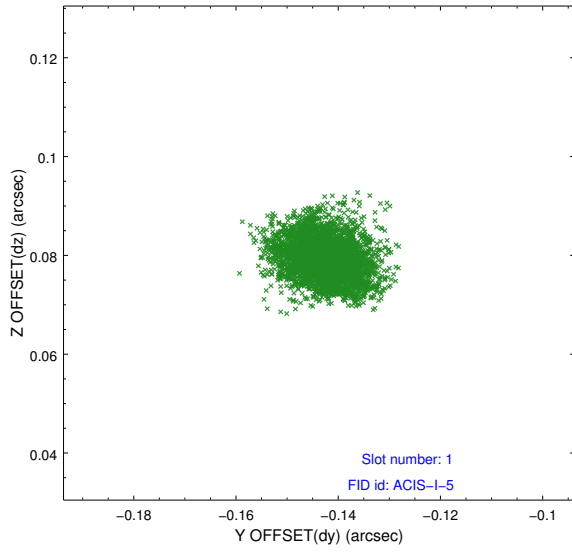


## 2.5 FID Slots

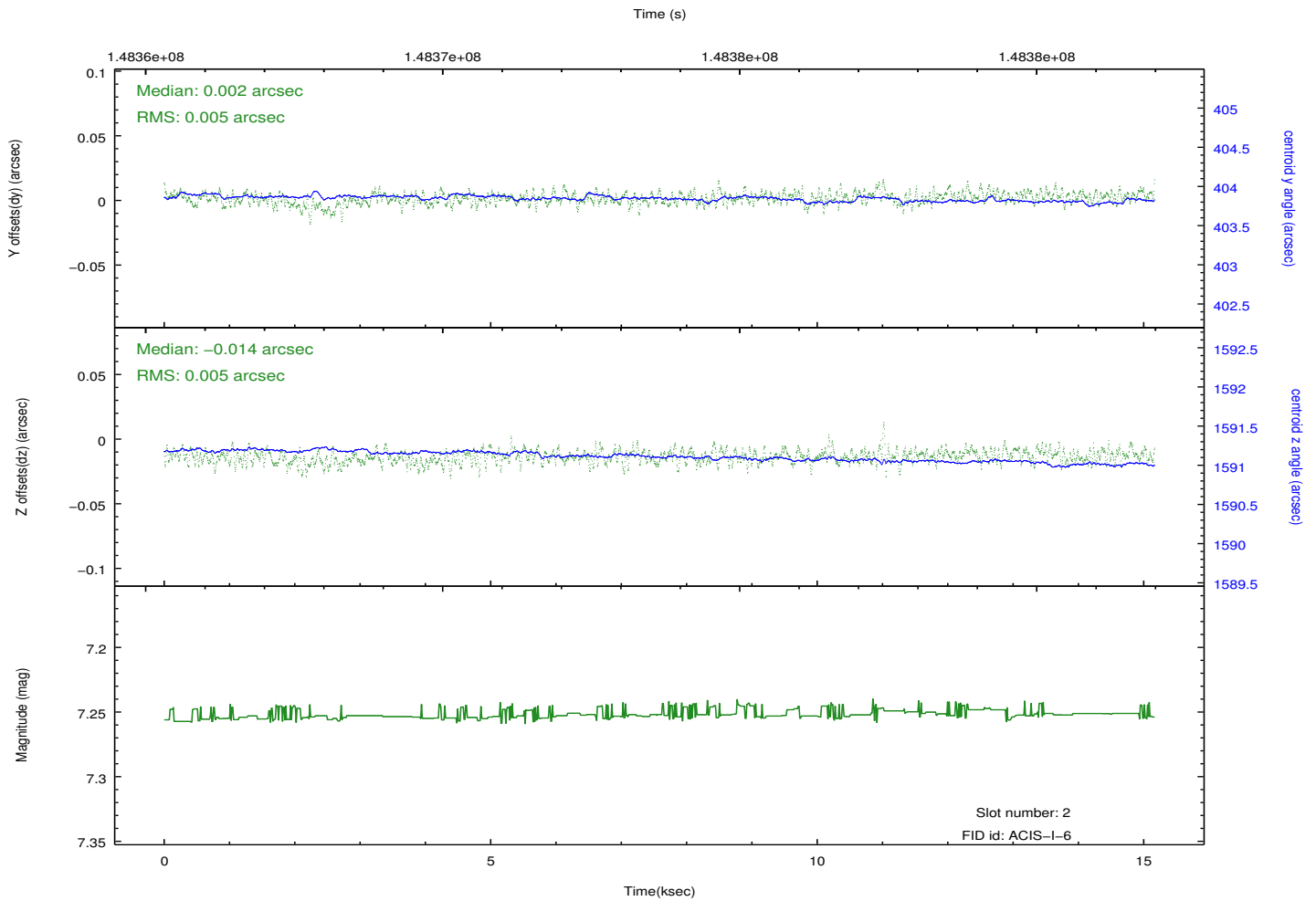
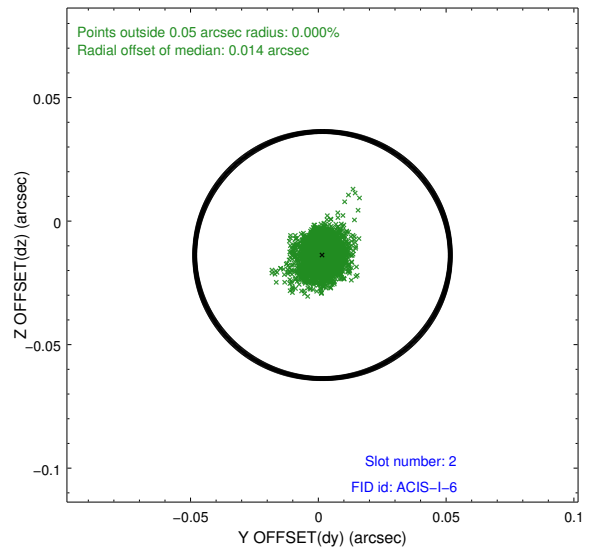
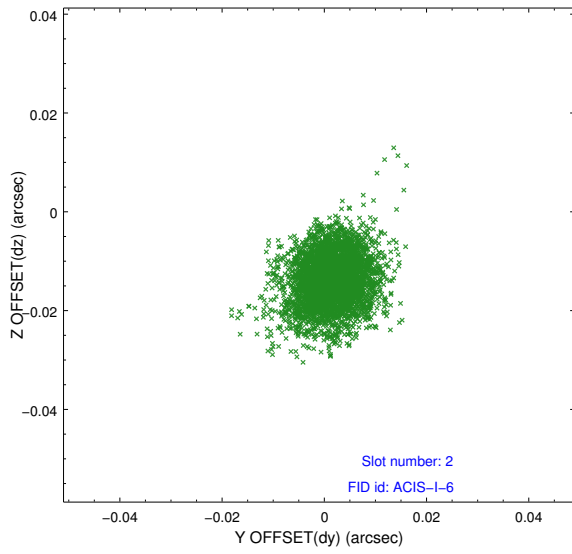
### 2.5.1 Slot 0



## 2.5.2 Slot 1



### 2.5.3 Slot 2



# A Summary

## A.1 Status

V&V Scientist	Jen Lauer
V&V Date (YYYY-MM-DD)	2012.10.23
V&V Edition	1
V&V Disposition and Status	OK
V&V Charge Time	15.121

## A.2 Comments