

V&V Reference Report

L2 ASCDS Version : 8.4.5

Observation 3265 - L2 Version 3
Chandra X-Ray Center

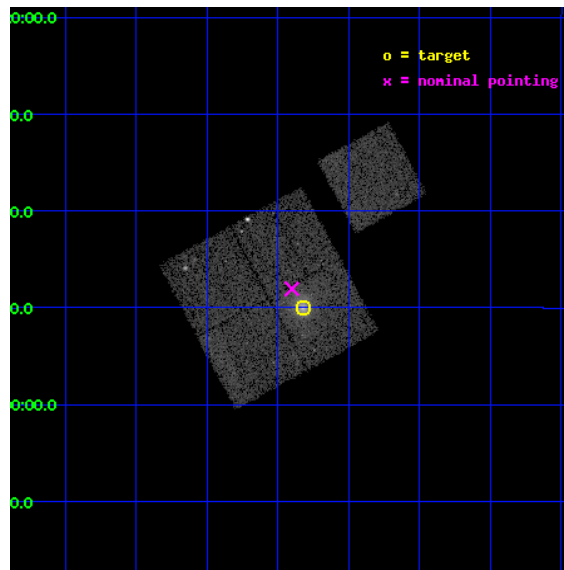
L2 Processing Date : Oct 15 2012

Contents

1	Front	2
2	OBI	3
2.1	OBI	3
2.1.1	Images	3
2.1.2	Bias	3
2.1.3	Parameters	4
2.1.4	Events	4
2.2	Compared Parameters	5
2.3	Aspect	6
2.4	Star Slots	9
2.4.1	Slot 3	9
2.4.2	Slot 4	10
2.4.3	Slot 5	11
2.4.4	Slot 6	12
2.4.5	Slot 7	13
2.5	FID Slots	14
2.5.1	Slot 0	14
2.5.2	Slot 1	15
2.5.3	Slot 2	16
A	Summary	17
A.1	Status	17
A.2	Comments	17

1 Front

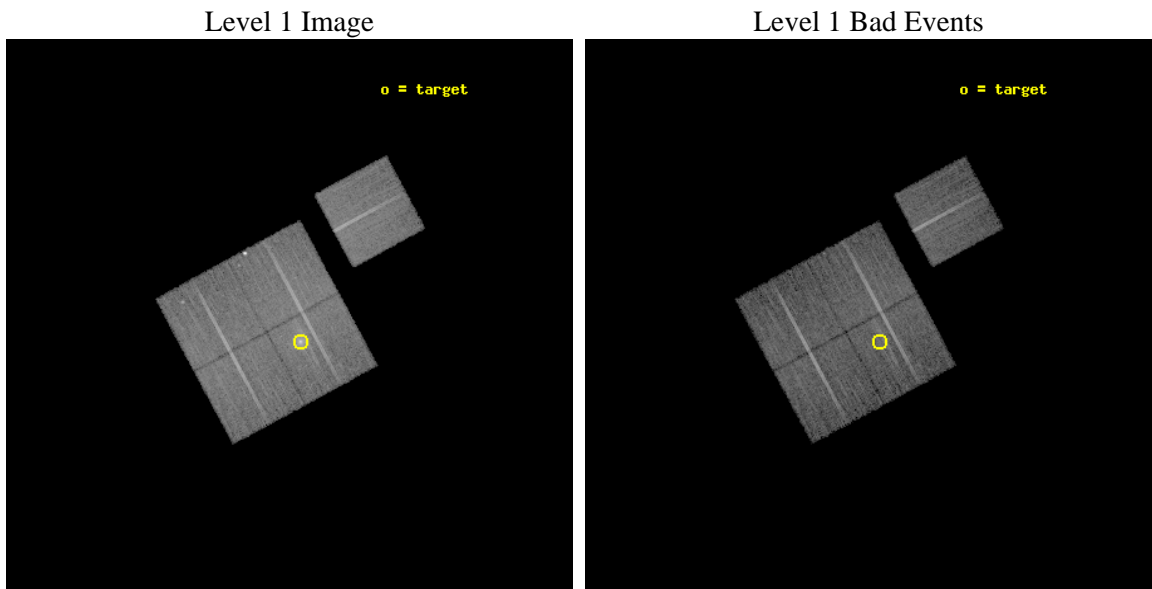
seq_num	800265	Sequence number
obs_id	3265	Observation id
title	MACS: THE X-RAY PROPERTIES OF THE MOST MASSIVE GALAXY CLUSTERS AT Z>0.3	Proposal title
observer	Dr. Harald Ebeling	Principal investigator
object	MACSJ0159.8-0849	Source name
dtcycle	0	
cycle	P	events from which exps? Prim/Second/Both
ra_targ	29.955417	Observer's specified target RA [deg]
dec_targ	-8.833056	Observer's specified target Dec [deg]
ra_nom	29.975211187042	Nominal RA [deg]
dec_nom	-8.8008534687733	Nominal Dec [deg]
roll_nom	61.625408203948	Nominal Roll [deg]
revision	3	Processing version of data
ontime	18138.018024623	Sum of GTIs [s]
livetime	17901.031466117	Livetime [s]
ontime0	18144.299965084	Sum of GTIs [s]
ontime1	18144.299965084	Sum of GTIs [s]
ontime2	18141.158994824	Sum of GTIs [s]
ontime3	18138.018024623	Sum of GTIs [s]
ontime6	18144.299965084	Sum of GTIs [s]
l2events	55928	Number of level 2 events



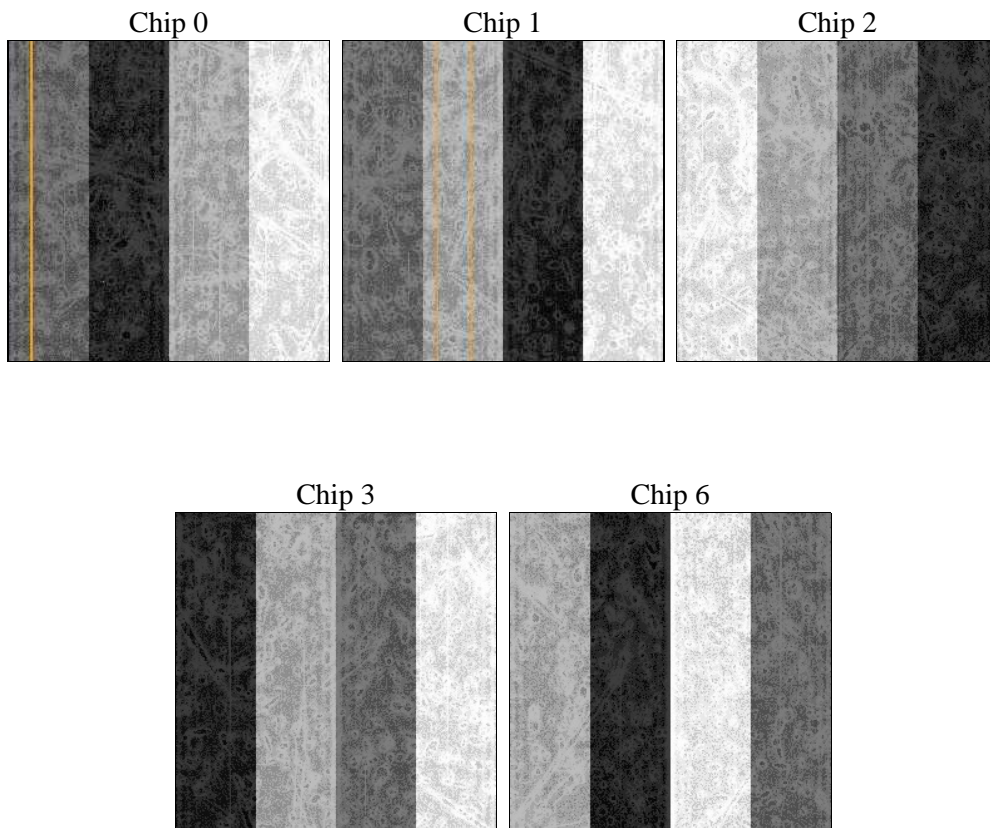
2 OBI

2.1 OBI

2.1.1 Images



2.1.2 Bias



2.1.3 Parameters

obi_num	0	Obi number	sched_exp_time	18000.000000	[s] Scheduled observation exposure time
ascdsver	8.4.5	Processing system revision	ontime	18138.018024623	Sum of GTIs [s]
caldbver	4.5.2	 	ontime0	18144.299965084	Sum of GTIs [s]
date	2012-10-15T13:04:27	Date and time of file creation	ontime1	18144.299965084	Sum of GTIs [s]
revision	3	Processing version of data	ontime2	18141.158994824	Sum of GTIs [s]
			ontime3	18138.018024623	Sum of GTIs [s]
			ontime6	18144.299965084	Sum of GTIs [s]
			l1events	608837	Number of level 1 events

2.1.4 Events

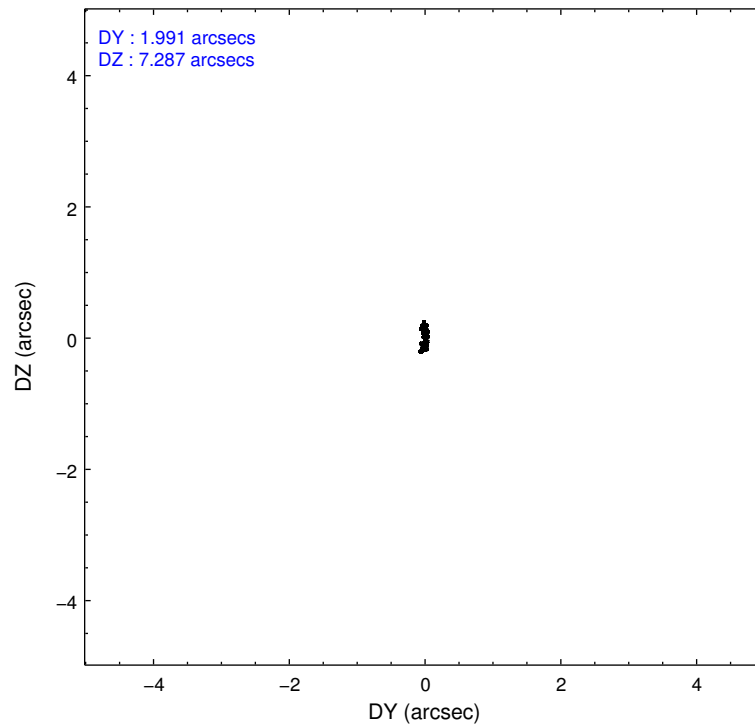
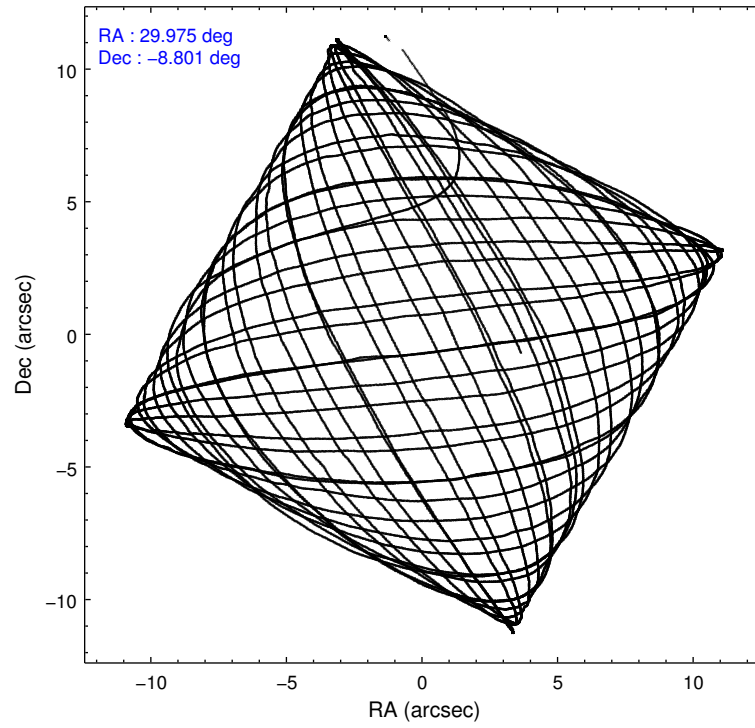
	ccd 0	ccd 1	ccd 2	ccd 3	ccd 6
level 1 events	113163	114342	130725	126728	123879
rejected events	103097	103087	116141	107898	113587
rejected %	91%	90%	88%	85%	91%

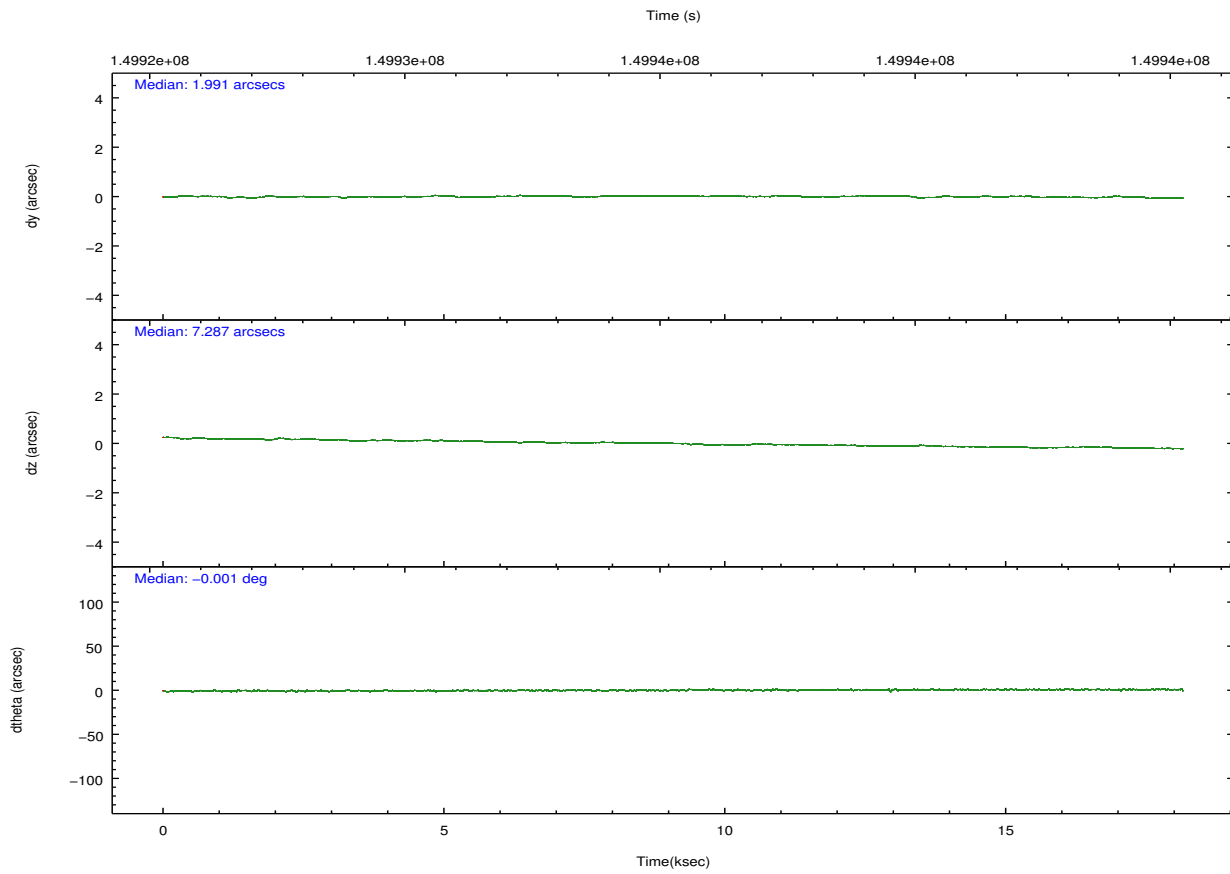
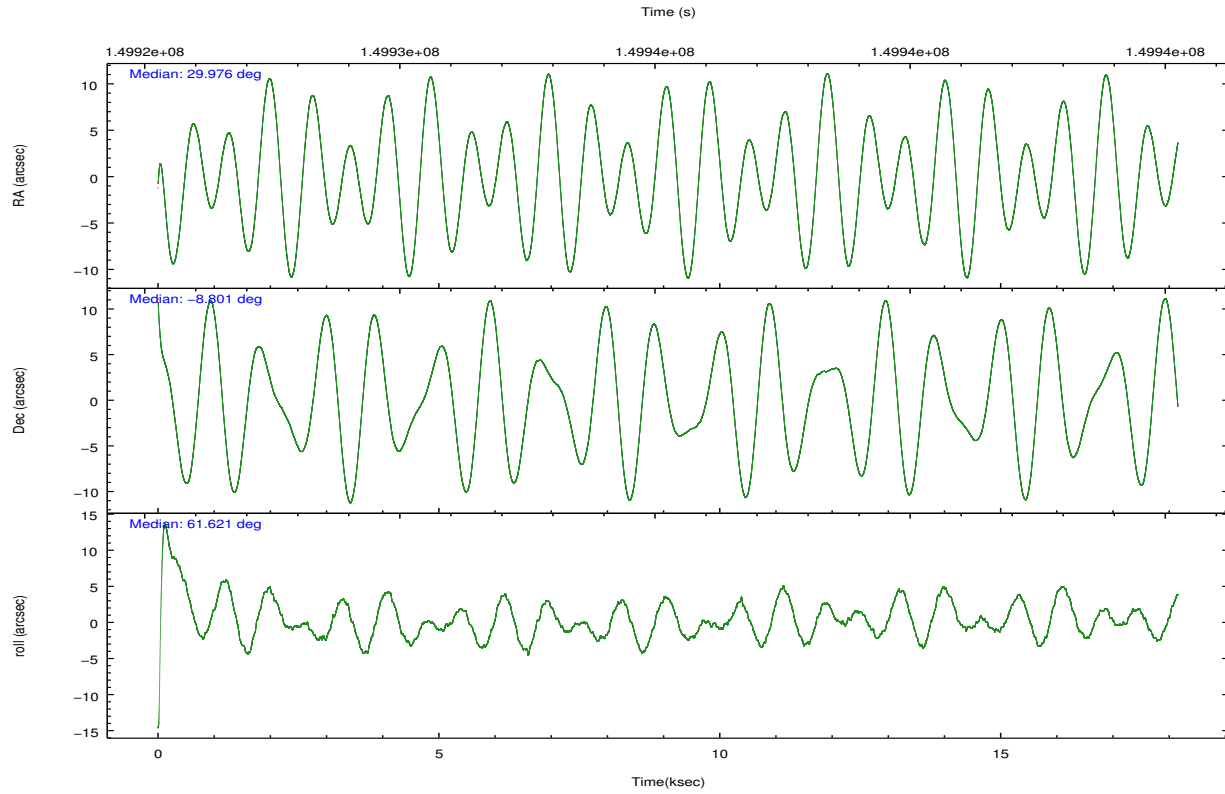
	ccd 0	ccd 1	ccd 2	ccd 3	ccd 6
grade 0 events	12865	13582	16972	20670	14034
	11%	11%	12%	16%	11%
grade 1 events	81	96	167	145	87
	0%	0%	0%	0%	0%
grade 2 events	5062	5508	5433	5797	5332
	4%	4%	4%	4%	4%
grade 3 events	2268	2317	2351	2423	2351
	2%	2%	1%	1%	1%
grade 4 events	2068	2287	2316	2387	2381
	1%	2%	1%	1%	1%
grade 5 events	3613	3786	3409	4029	3999
	3%	3%	2%	3%	3%
grade 6 events	4135	4671	4095	4270	5084
	3%	4%	3%	3%	4%
grade 7 events	83071	82095	95982	87007	90611
	73%	71%	73%	68%	73%

2.2 Compared Parameters

Parameter	Planned	Actual	Parameter	Planned	Actual
Instrument	ACIS	ACIS	Obspar format version number	7	7
Detector	ACIS-01236	ACIS-01236	Obspar file type	PREDICTED	ACTUAL
Grating	NONE	NONE	Obspar update status	NONE	UPDATED
Data mode	VFAINT	VFAINT	Number of optional ACIS chips dropped	0	0
Observation mode	POINTING	POINTING	On-chip summing requested	N	N
[deg] Pointing RA	29.976115	29.97521118704161	Subarray requested	NONE	NONE
[deg] Pointing Dec	-8.828259	-8.800853468773322	Alternating exposures requested	N	N
[deg] Pointing Roll	61.416879	61.62540820394766	[s] Primary exposure time	0.000000	3.1
[mm] SIM focus pos	-0.782348	-0.7809083437167272			
[mm] SIM defocus	0	0.001439871863259334			
[mm] SIM translation stage pos	-227.742463	-227.734108438797			
[mm] SIM translation stage offset	-5.85	-5.858344564132665			
[s] Observation start time (MET)	149926332.184000	149924362.10343			
Observation start date	2002-10-02T06:11:08	2002-10-02T05:39:22			
[s] Observation end time (MET)	149944332.184000	149946137.20433			
Observation end date	2002-10-02T11:11:08	2002-10-02T11:42:17			
Read mode	TIMED	TIMED			

2.3 Aspect



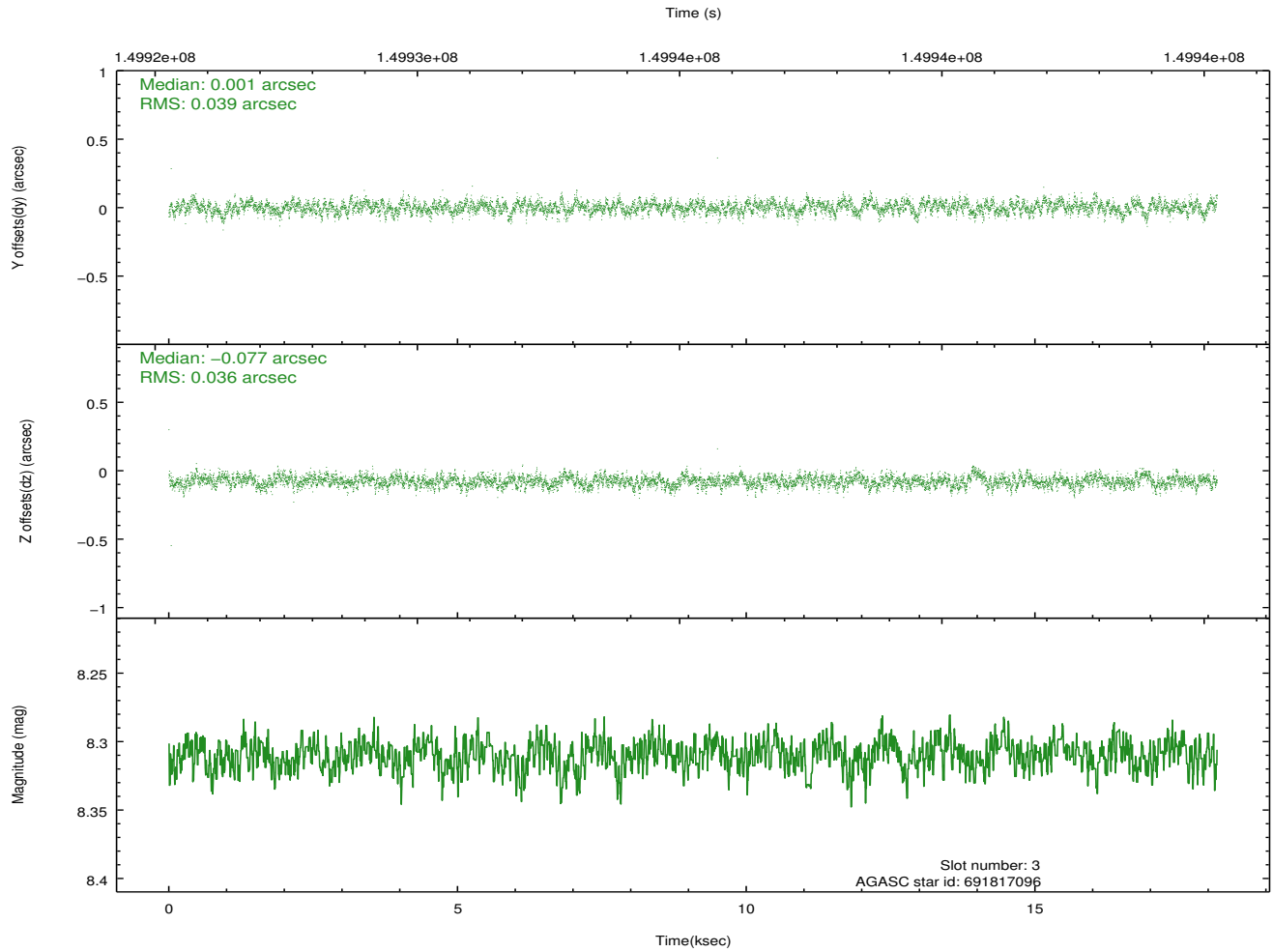
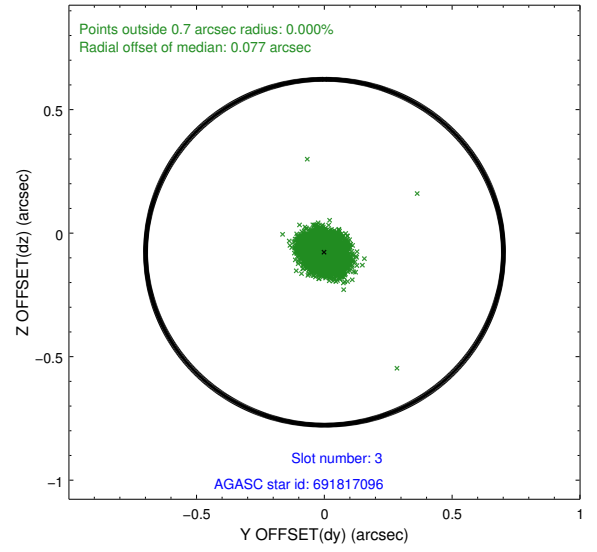
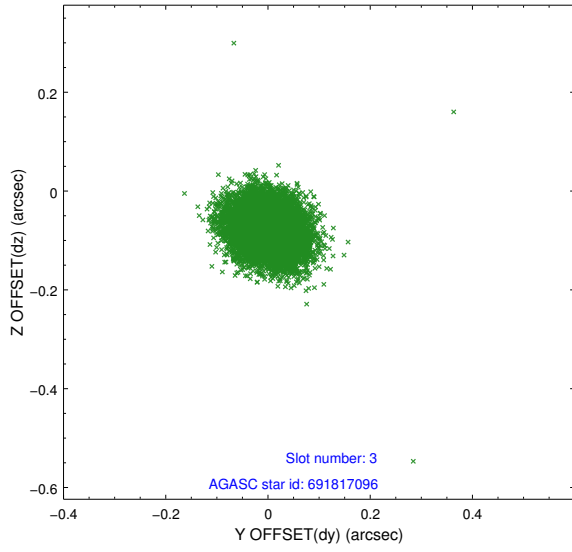


Slot Statistics

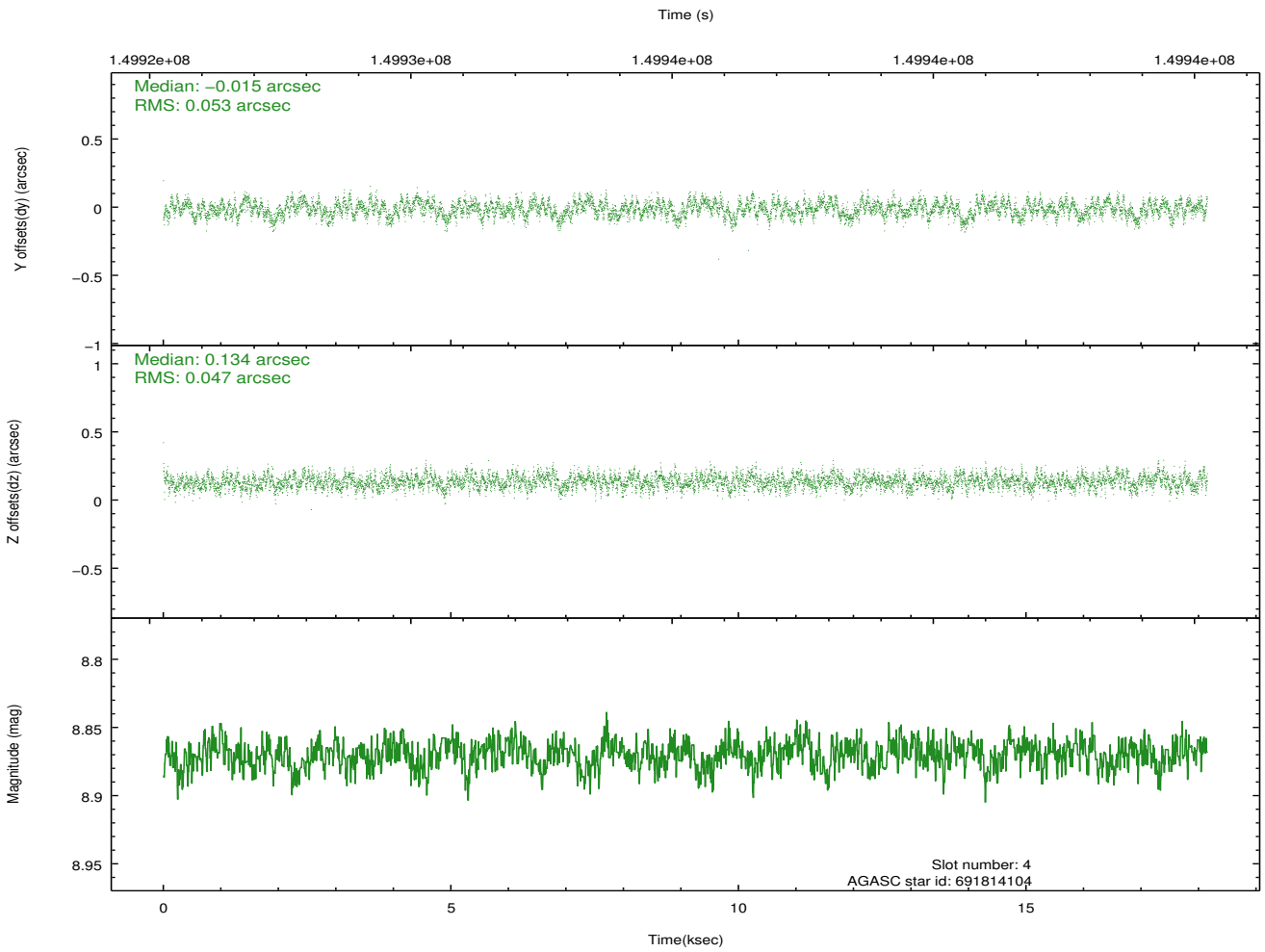
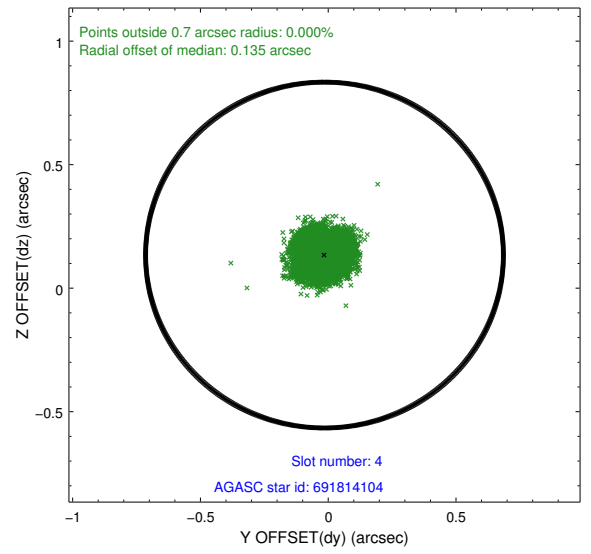
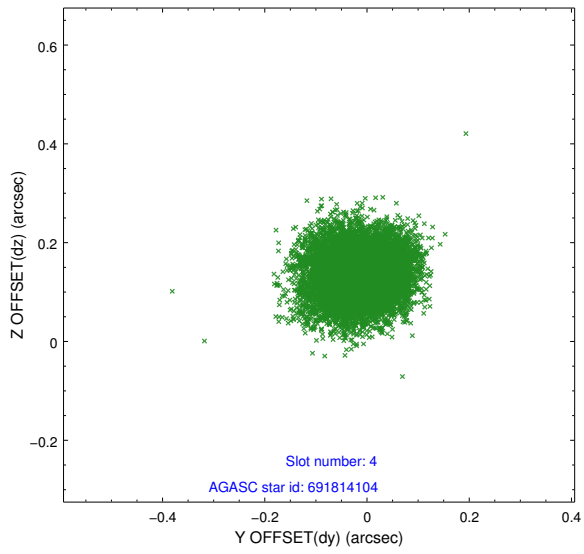
slot	status	id	mag	n_pts	med_dy	med_dz	dr1	dr2	ra	dec	mean_y	mean_z
0	FID	ACIS-I-1	7.24	4428	0.045	0.004	0.008	0.014	0.000000	0.000000	937.76	-950.93
1	FID	ACIS-I-5	7.23	4428	-0.132	0.077	0.008	0.012	0.000000	0.000000	-1810.38	946.52
2	FID	ACIS-I-6	7.25	4428	-0.003	-0.009	0.009	0.014	0.000000	0.000000	403.04	1591.17
3	GUIDE	691817096	8.31	8795	0.001	-0.077	0.055	0.091	29.769058	-8.981725	-837.39	383.12
4	GUIDE	691814104	8.87	8855	-0.015	0.134	0.075	0.119	30.197239	-9.598726	-2060.23	-2015.33
5	GUIDE	691810904	9.05	8855	-0.090	0.022	0.081	0.130	29.876683	-8.010454	2415.43	1721.01
6	GUIDE	691811024	8.91	8855	0.021	-0.034	0.071	0.111	29.791583	-8.363095	1156.29	1379.68
7	GUIDE	692204744	9.34	8848	0.084	-0.043	0.122	0.207	30.881810	-8.596523	2272.23	-2432.35

2.4 Star Slots

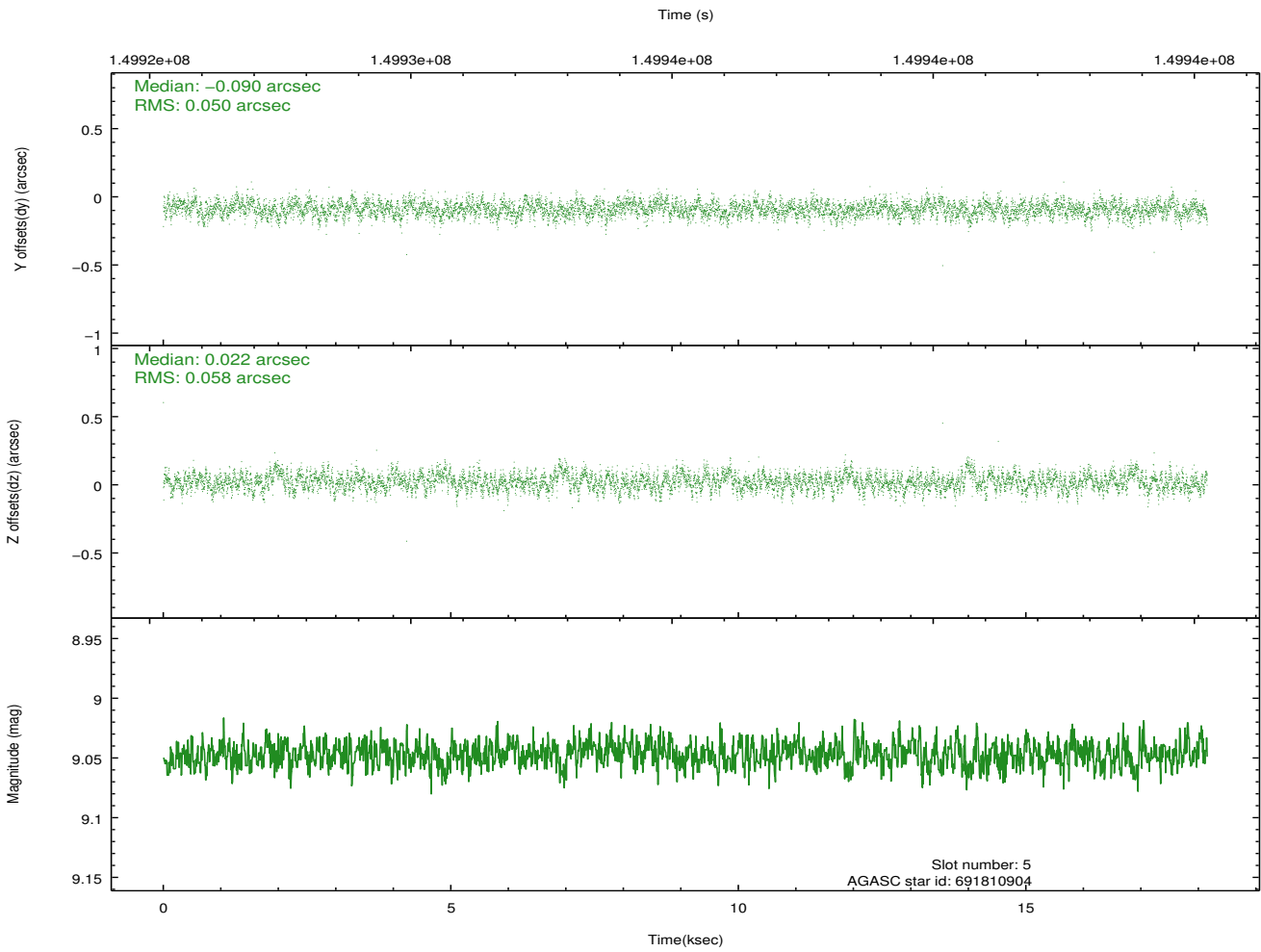
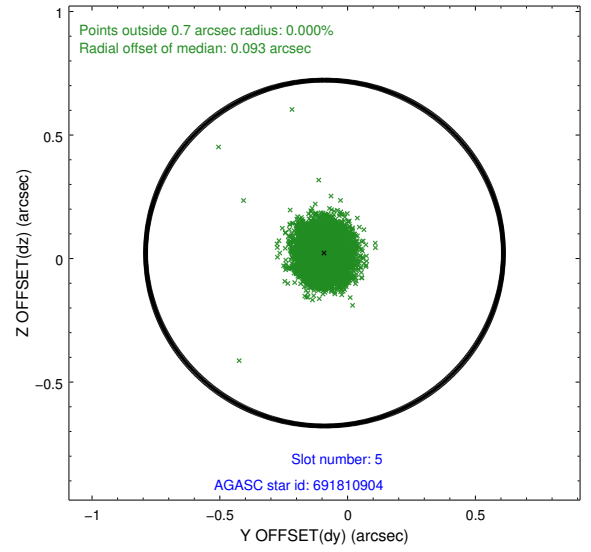
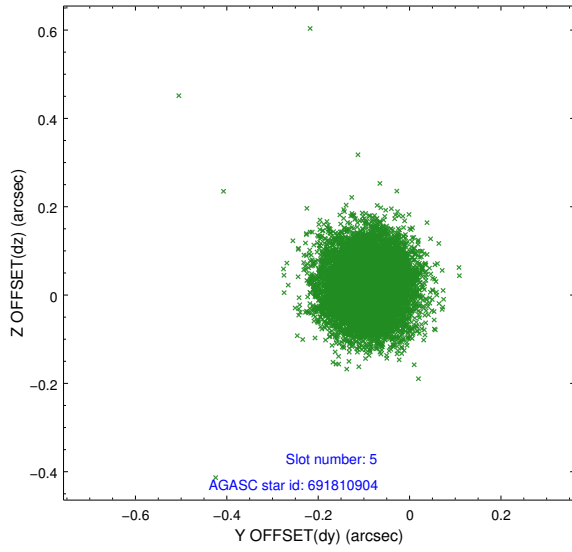
2.4.1 Slot 3



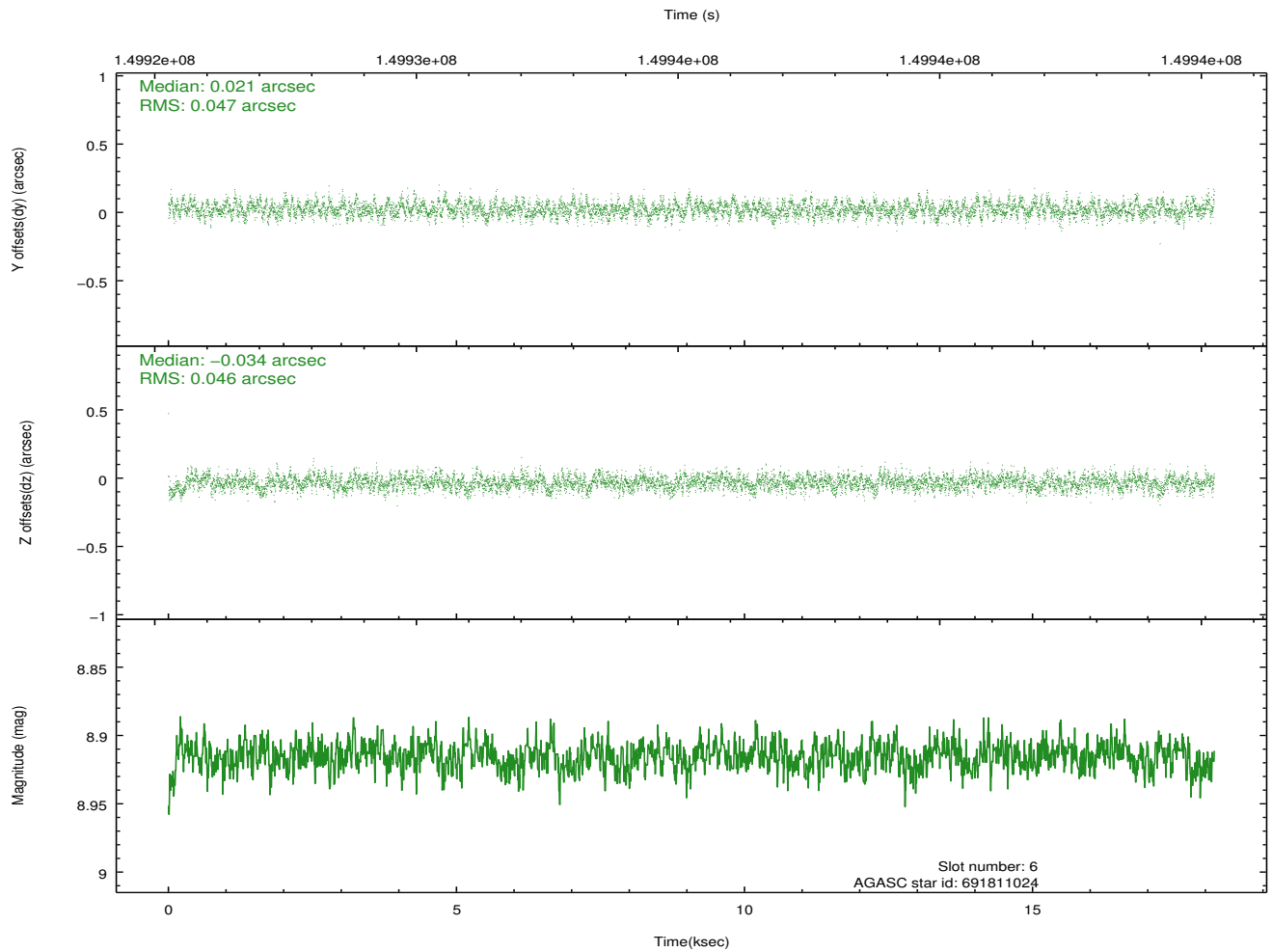
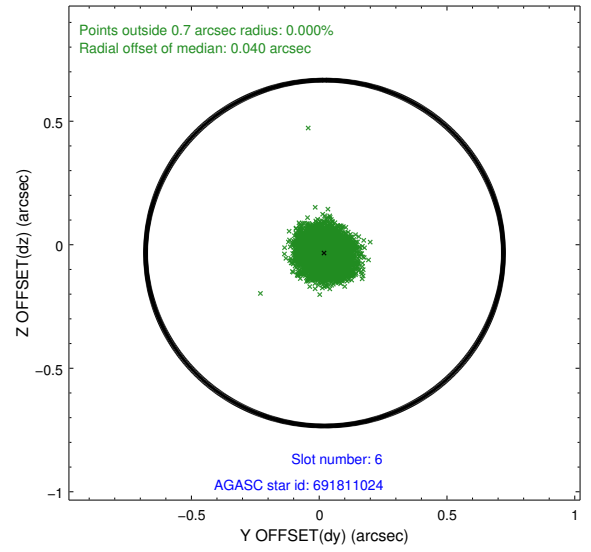
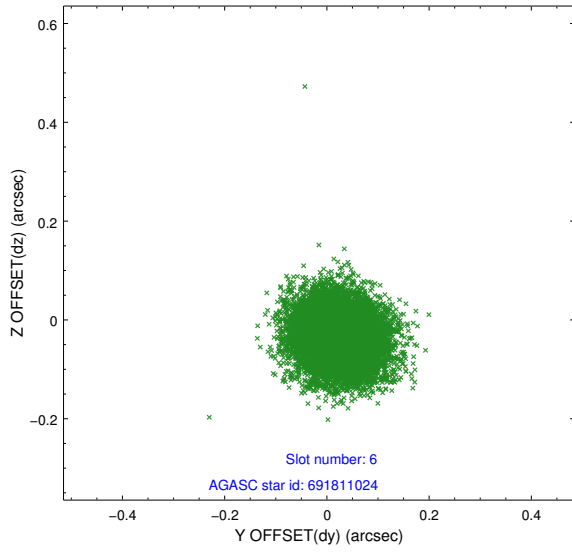
2.4.2 Slot 4



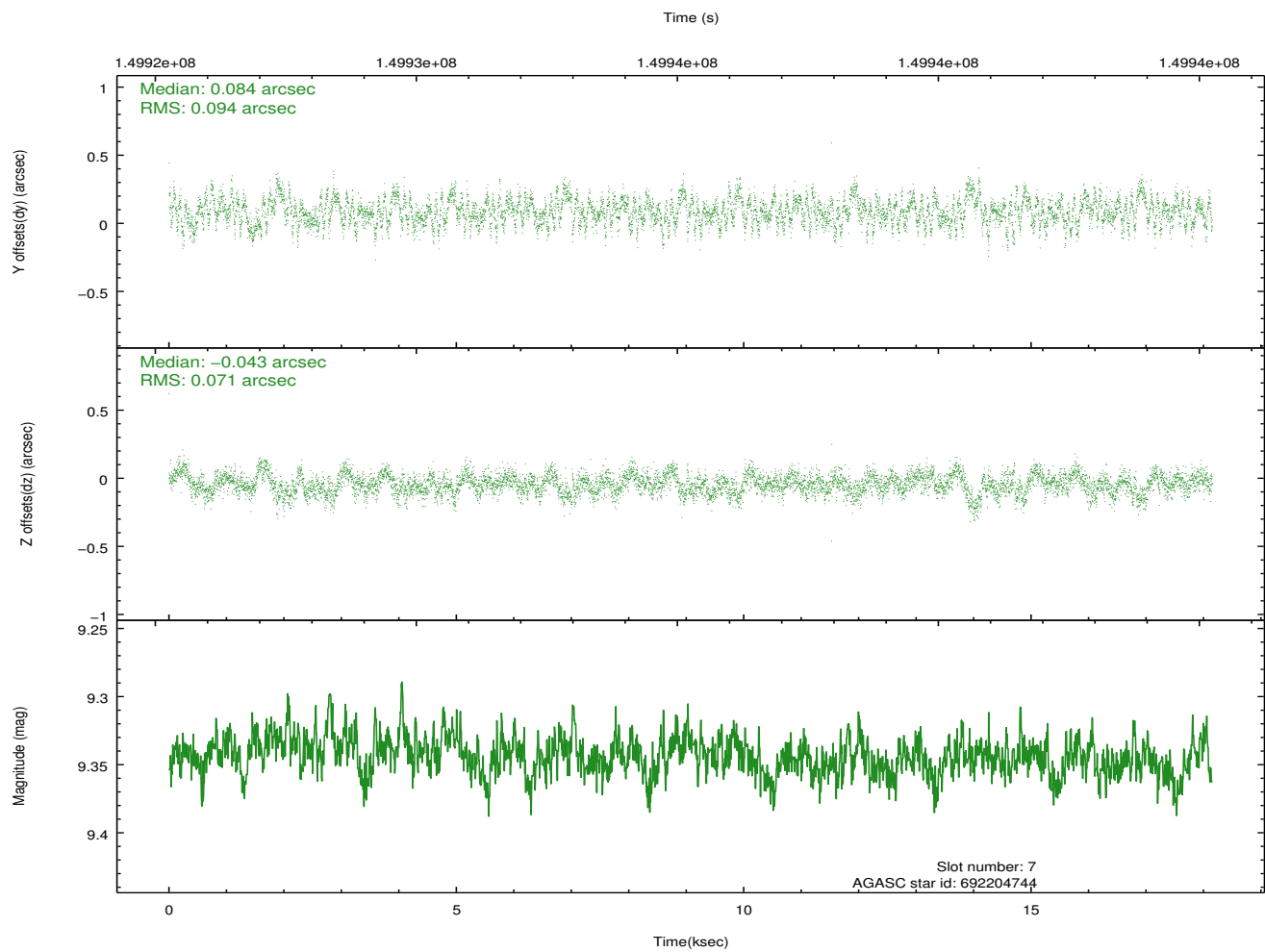
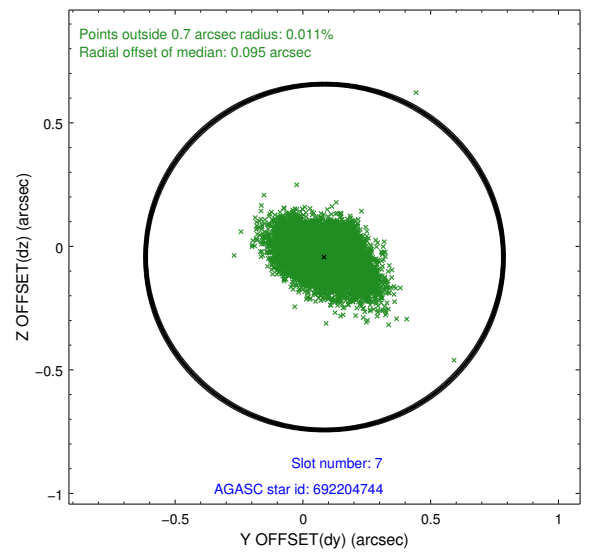
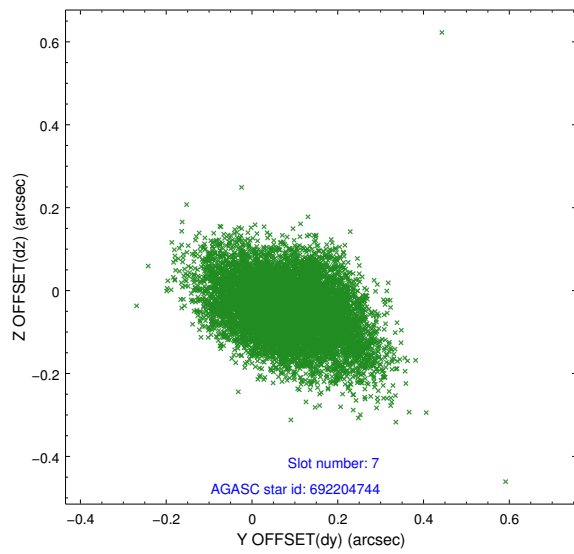
2.4.3 Slot 5



2.4.4 Slot 6

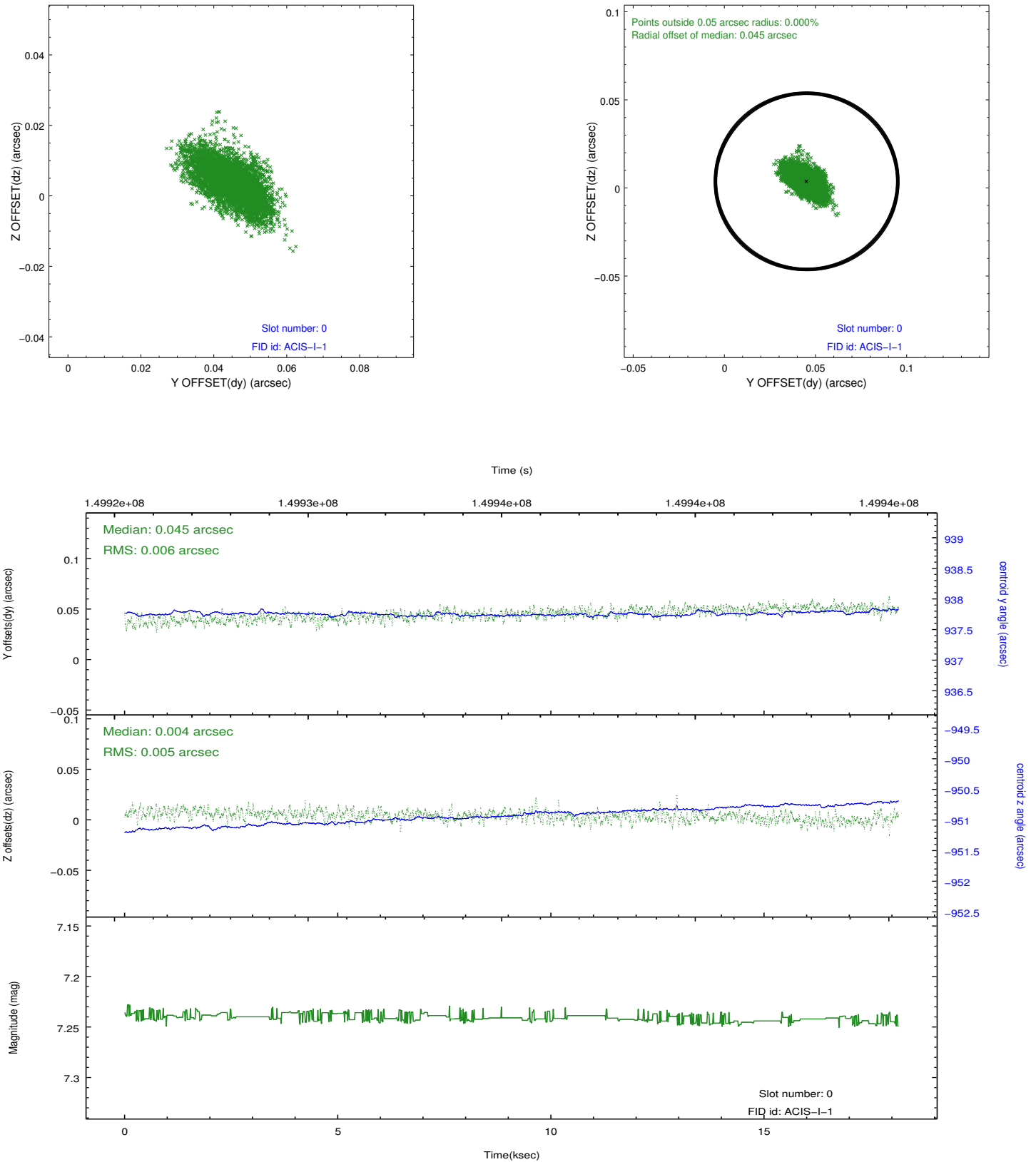


2.4.5 Slot 7

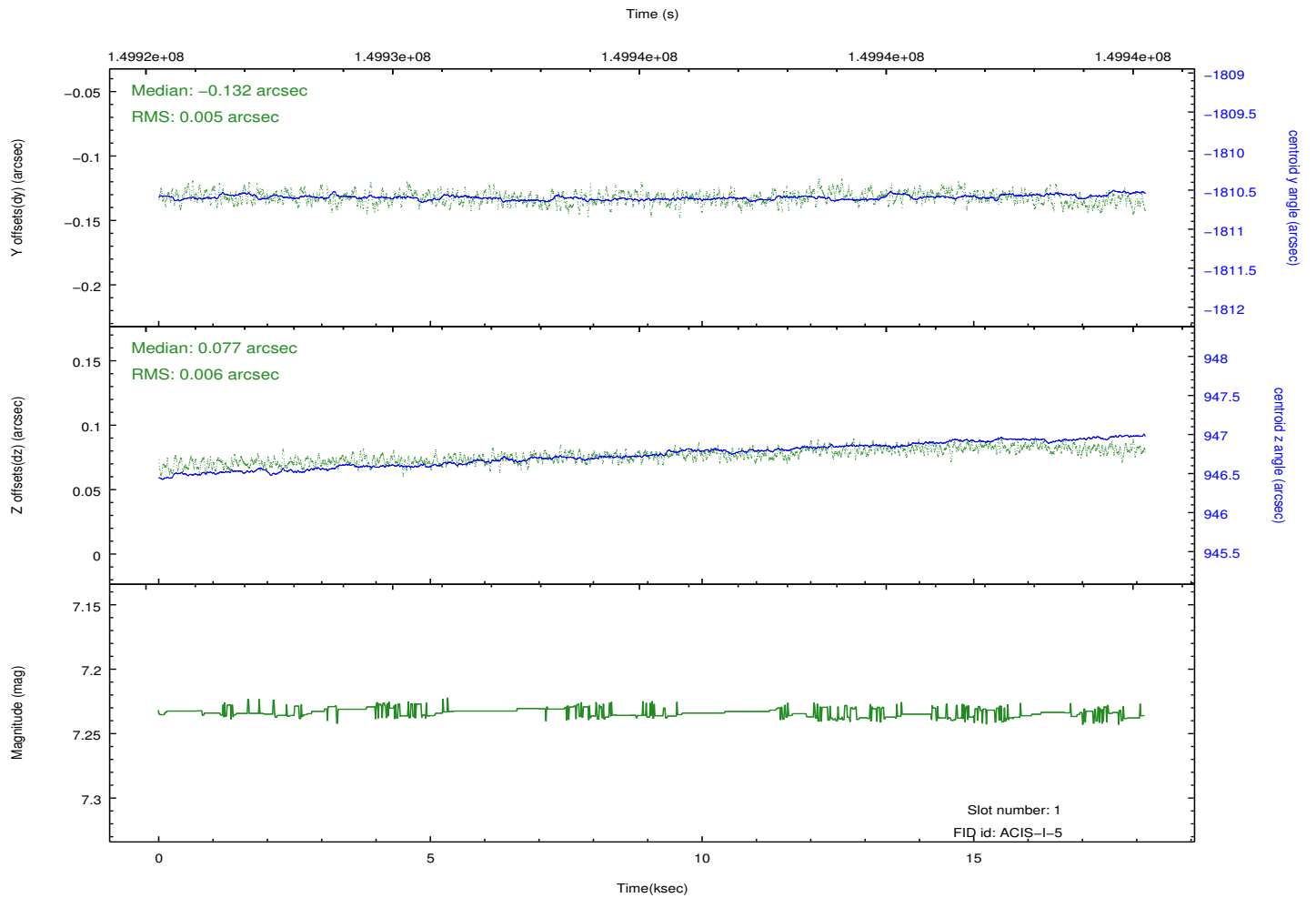
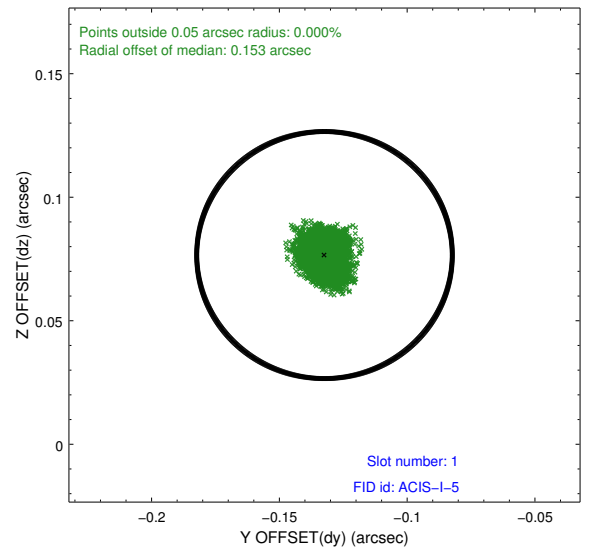
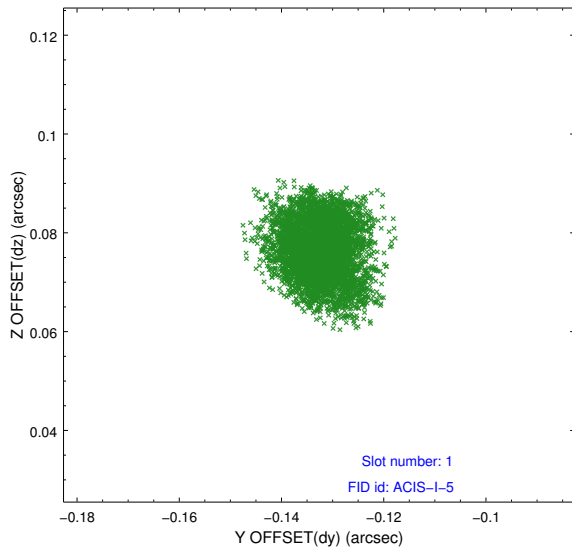


2.5 FID Slots

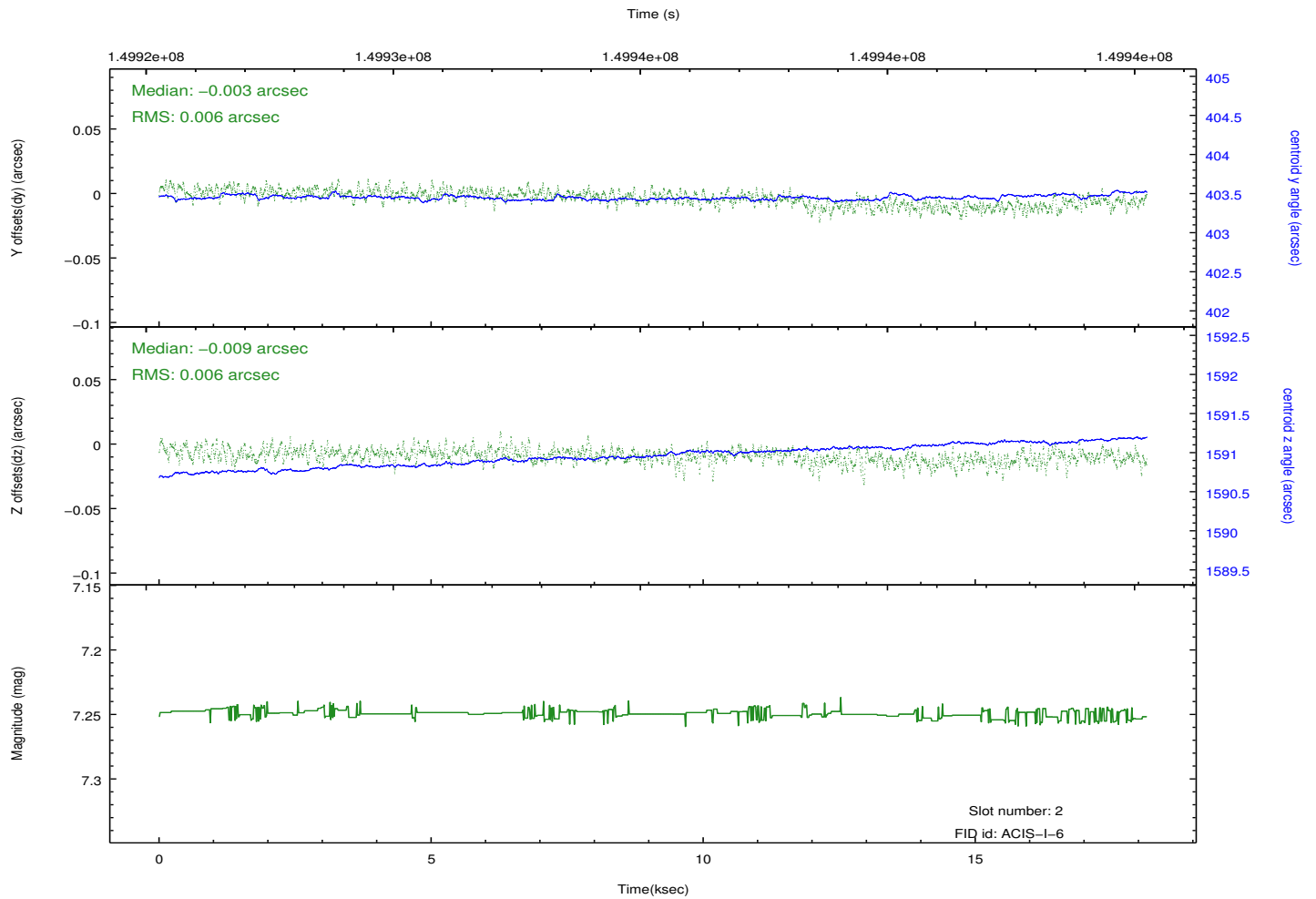
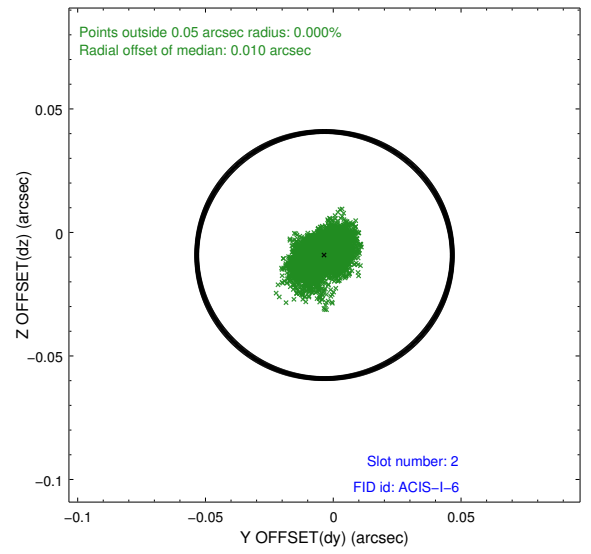
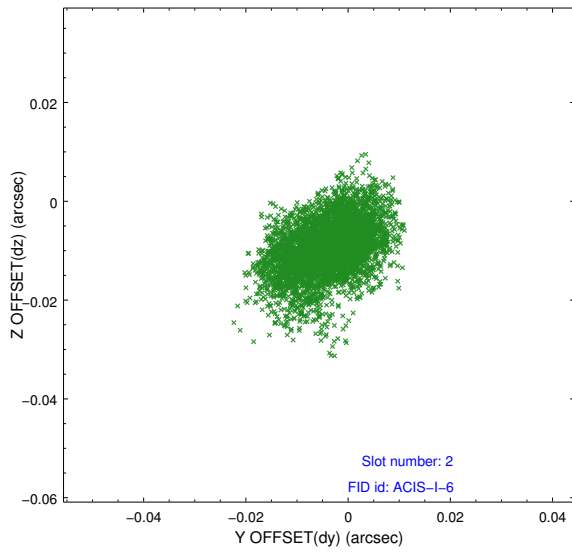
2.5.1 Slot 0



2.5.2 Slot 1



2.5.3 Slot 2



A Summary

A.1 Status

V&V Scientist	Jen Lauer
V&V Date (YYYY-MM-DD)	2012.10.25
V&V Edition	1
V&V Disposition and Status	OK
V&V Charge Time	18.138

A.2 Comments