

V&V Reference Report

L2 ASCDS Version : 8.4.5

Observation 3285 - L2 Version 3
Chandra X-Ray Center

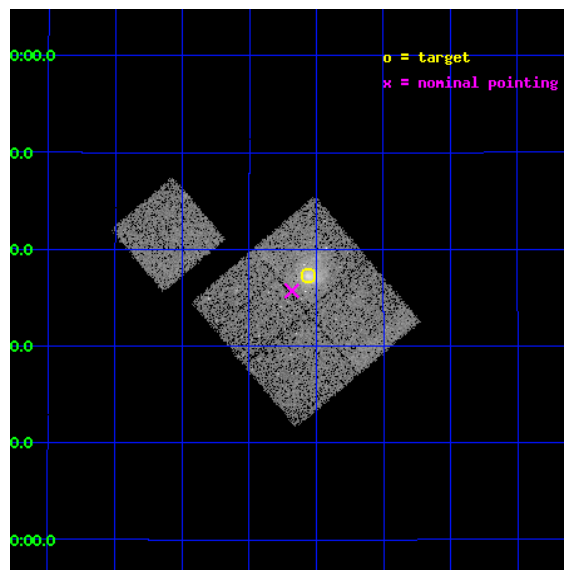
L2 Processing Date : Oct 21 2012

Contents

1	Front	2
2	OBI	3
2.1	OBI	3
2.1.1	Images	3
2.1.2	Bias	3
2.1.3	Parameters	4
2.1.4	Events	4
2.2	Compared Parameters	5
2.3	Aspect	6
2.4	Star Slots	9
2.4.1	Slot 3	9
2.4.2	Slot 4	10
2.4.3	Slot 5	11
2.4.4	Slot 6	12
2.4.5	Slot 7	13
2.5	FID Slots	14
2.5.1	Slot 0	14
2.5.2	Slot 1	15
2.5.3	Slot 2	16
A	Summary	17
A.1	Status	17
A.2	Comments	17

1 Front

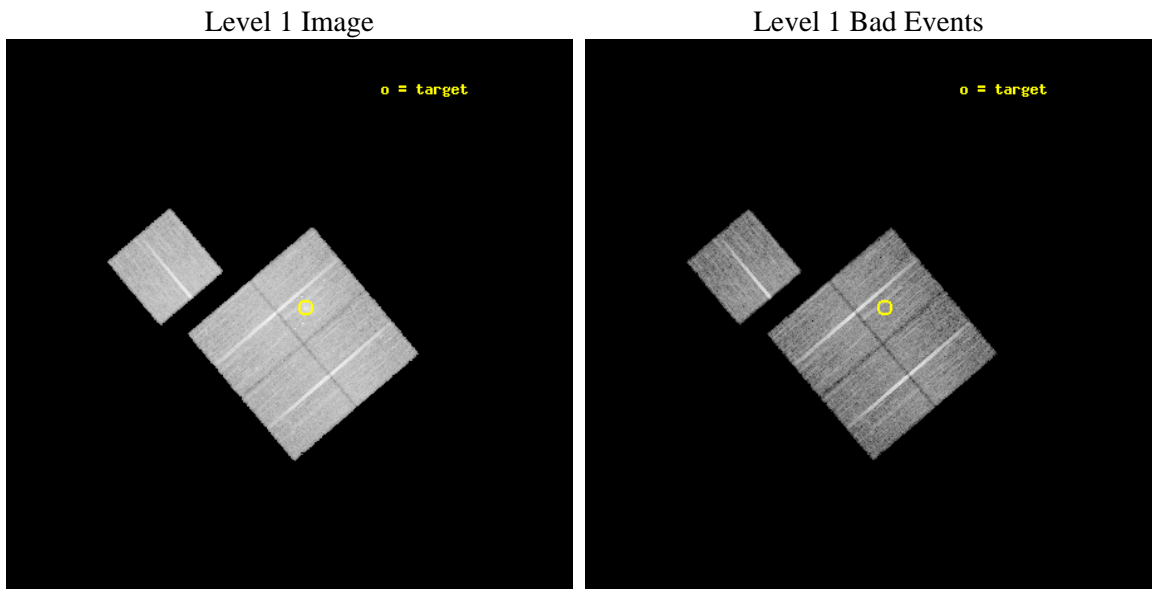
seq_num	800285	Sequence number
obs_id	3285	Observation id
title	MACS: THE X-RAY PROPERTIES OF THE MOST MASSIVE GALAXY CLUSTERS AT Z>0.3	Proposal title
observer	Dr. Harald Ebeling	Principal investigator
object	MACSJ2228.5+2036	Source name
dtcycle	0	
cycle	P	events from which exps? Prim/Second/Both
ra_targ	337.14125	Observer's specified target RA [deg]
dec_targ	20.621111	Observer's specified target Dec [deg]
ra_nom	337.1705570684	Nominal RA [deg]
dec_nom	20.595312449381	Nominal Dec [deg]
roll_nom	319.65636506947	Nominal Roll [deg]
revision	3	Processing version of data
ontime	20115.859030962	Sum of GTIs [s]
livetime	19853.030523642	Livetime [s]
ontime0	20112.718040854	Sum of GTIs [s]
ontime1	20118.999961287	Sum of GTIs [s]
ontime2	20112.71803087	Sum of GTIs [s]
ontime3	20115.859030962	Sum of GTIs [s]
ontime6	20118.999961287	Sum of GTIs [s]
l2events	52155	Number of level 2 events



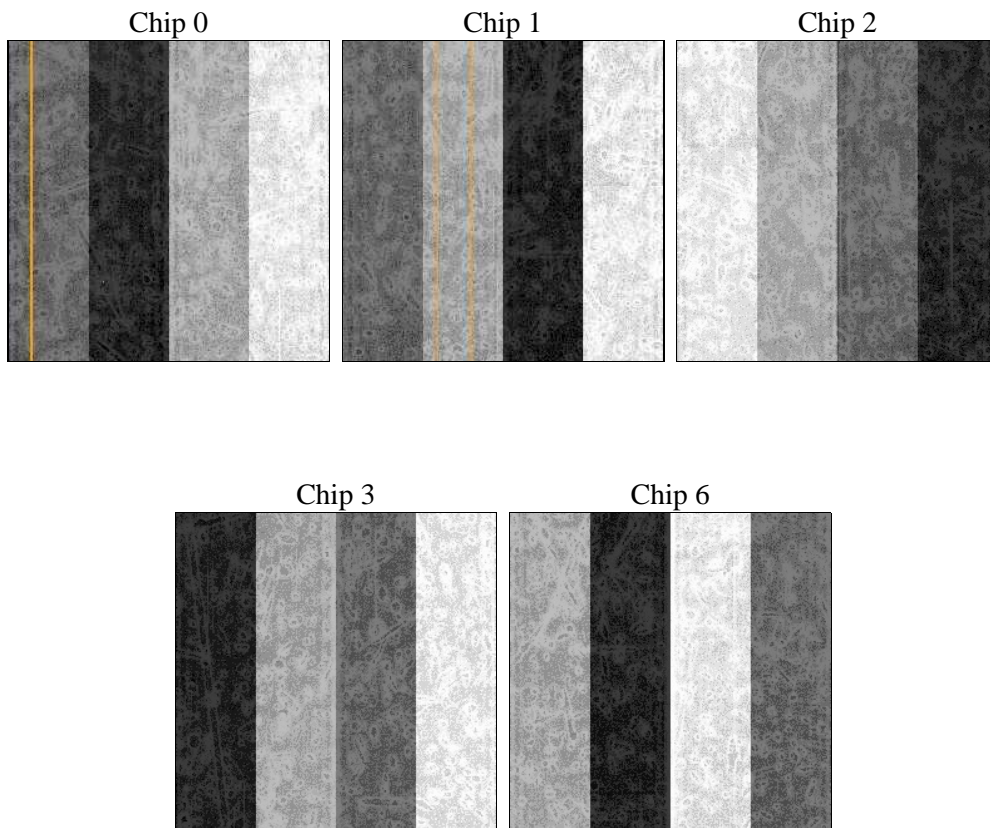
2 OBI

2.1 OBI

2.1.1 Images



2.1.2 Bias



2.1.3 Parameters

obi_num	2	Obi number	sched_exp_time	20000.000000	[s] Scheduled observation exposure time
ascdsver	8.4.5	Processing system revision	ontime	20115.859030962	Sum of GTIs [s]
caldbver	4.5.2	 	ontime0	20112.718040854	Sum of GTIs [s]
date	2012-10-21T03:33:39	Date and time of file creation	ontime1	20118.999961287	Sum of GTIs [s]
revision	3	Processing version of data	ontime2	20112.71803087	Sum of GTIs [s]
			ontime3	20115.859030962	Sum of GTIs [s]
			ontime6	20118.999961287	Sum of GTIs [s]
			l1events	534606	Number of level 1 events

2.1.4 Events

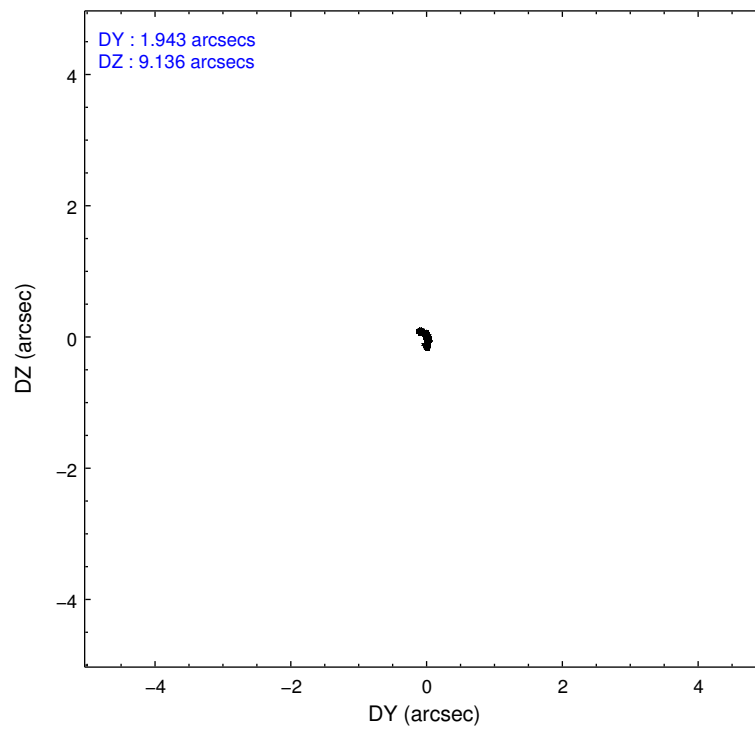
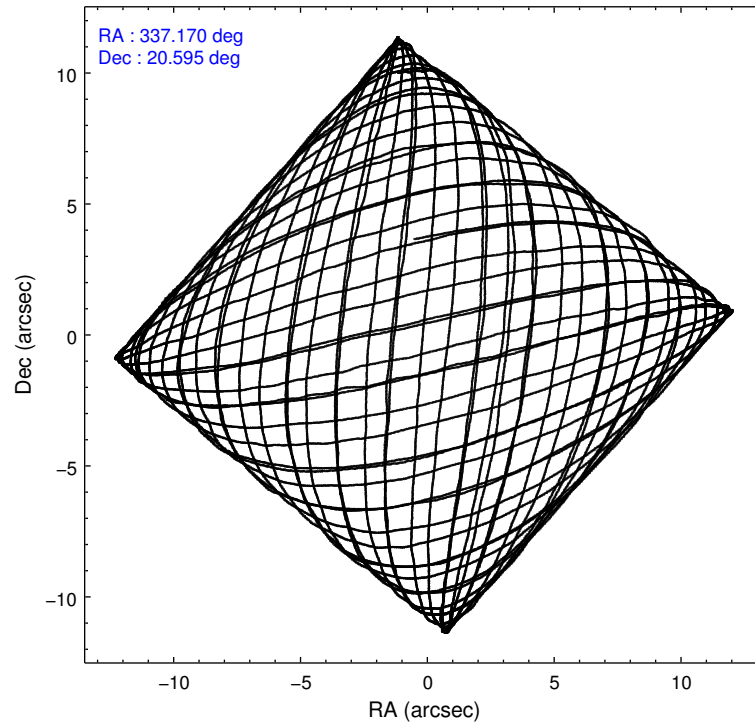
	ccd 0	ccd 1	ccd 2	ccd 3	ccd 6
level 1 events	98396	101277	111816	116173	106944
rejected events	87942	89329	100898	98251	96556
rejected %	89%	88%	90%	84%	90%

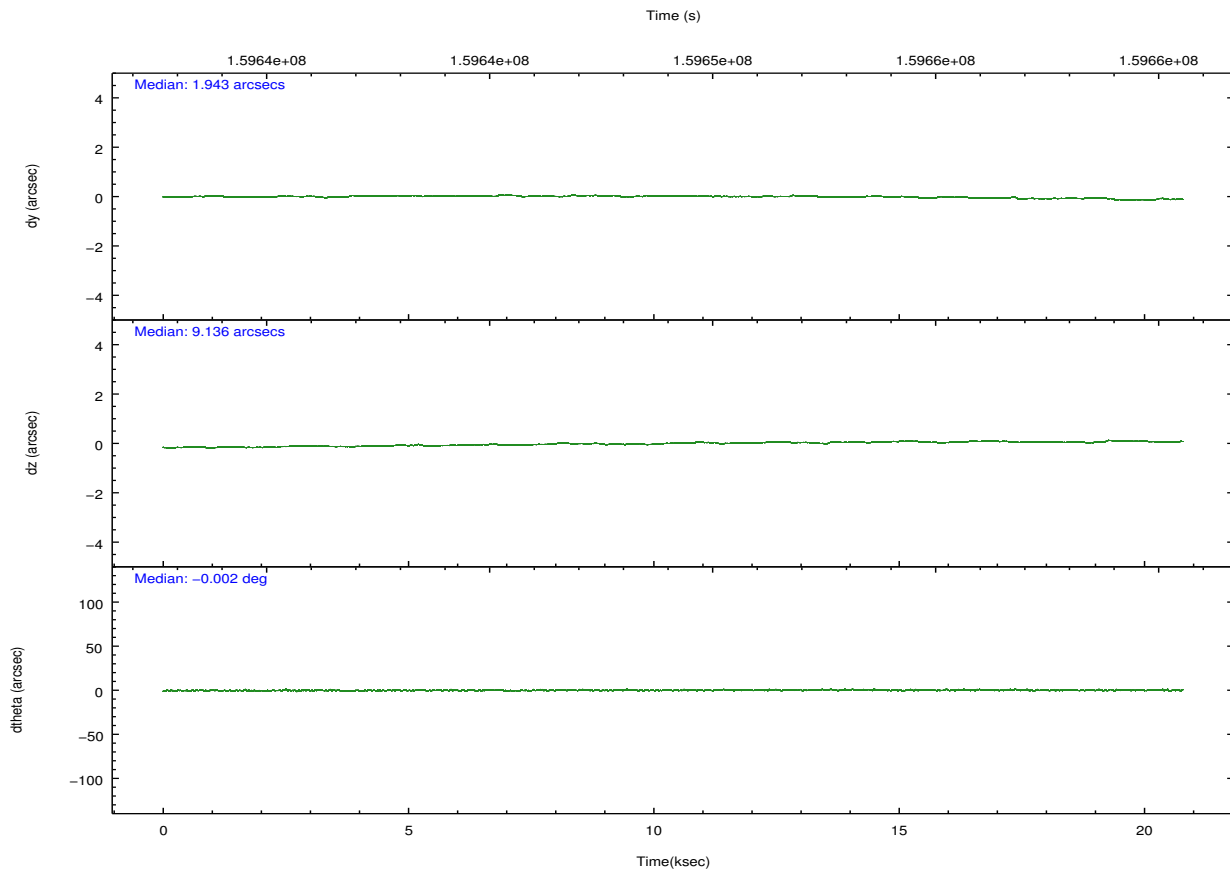
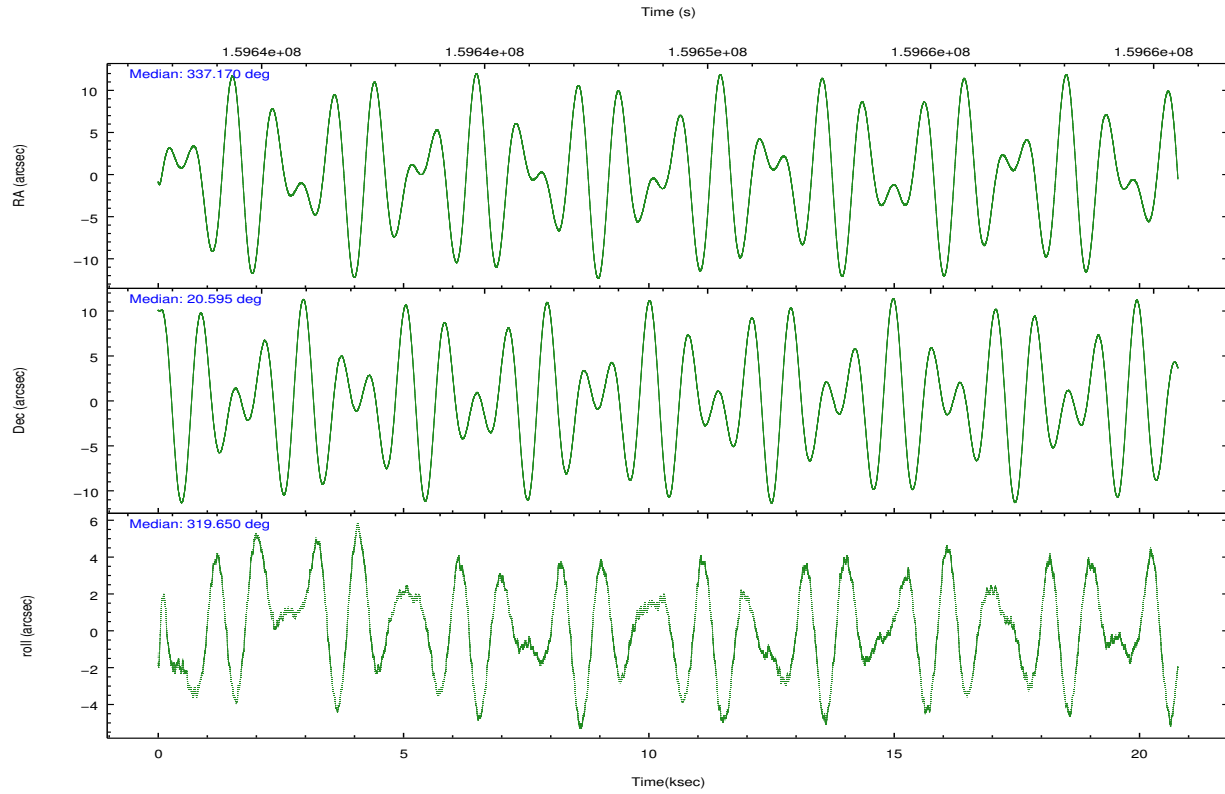
	ccd 0	ccd 1	ccd 2	ccd 3	ccd 6
grade 0 events	3713	4526	4347	10146	3536
	3%	4%	3%	8%	3%
grade 1 events	49	48	55	78	44
	0%	0%	0%	0%	0%
grade 2 events	2365	2472	2369	2937	2218
	2%	2%	2%	2%	2%
grade 3 events	1251	1337	1209	1349	1260
	1%	1%	1%	1%	1%
grade 4 events	1155	1287	1186	1282	1229
	1%	1%	1%	1%	1%
grade 5 events	3565	3802	3285	4105	3979
	3%	3%	2%	3%	3%
grade 6 events	1973	2328	1807	2210	2148
	2%	2%	1%	1%	2%
grade 7 events	84325	85477	97558	94066	92530
	85%	84%	87%	80%	86%

2.2 Compared Parameters

Parameter	Planned	Actual	Parameter	Planned	Actual
Instrument	ACIS	ACIS	Obspar format version number	7	7
Detector	ACIS-01236	ACIS-01236	Obspar file type	PREDICTED	ACTUAL
Grating	NONE	NONE	Obspar update status	NONE	UPDATED
Data mode	VFAINT	VFAINT	Number of optional ACIS chips dropped	0	0
Observation mode	POINTING	POINTING	On-chip summing requested	N	N
[deg] Pointing RA	337.141729	337.1705570684044	Subarray requested	NONE	NONE
[deg] Pointing Dec	20.600103	20.59531244938144	Alternating exposures requested	N	N
[deg] Pointing Roll	319.457828	319.6563650694733	[s] Primary exposure time	0.000000	3.1
[mm] SIM focus pos	-0.782348	-0.7809083437167272			
[mm] SIM defocus	0	0.001439871863259334			
[mm] SIM translation stage pos	-227.742463	-227.734108438797			
[mm] SIM translation stage offset	-5.85	-5.858344564132665			
[s] Observation start time (MET)	159639503.184000	159638240.35808			
Observation start date	2003-01-22T16:17:19	2003-01-22T15:57:20			
[s] Observation end time (MET)	159659503.184000	159660357.80901			
Observation end date	2003-01-22T21:50:39	2003-01-22T22:05:57			
Read mode	TIMED	TIMED			

2.3 Aspect



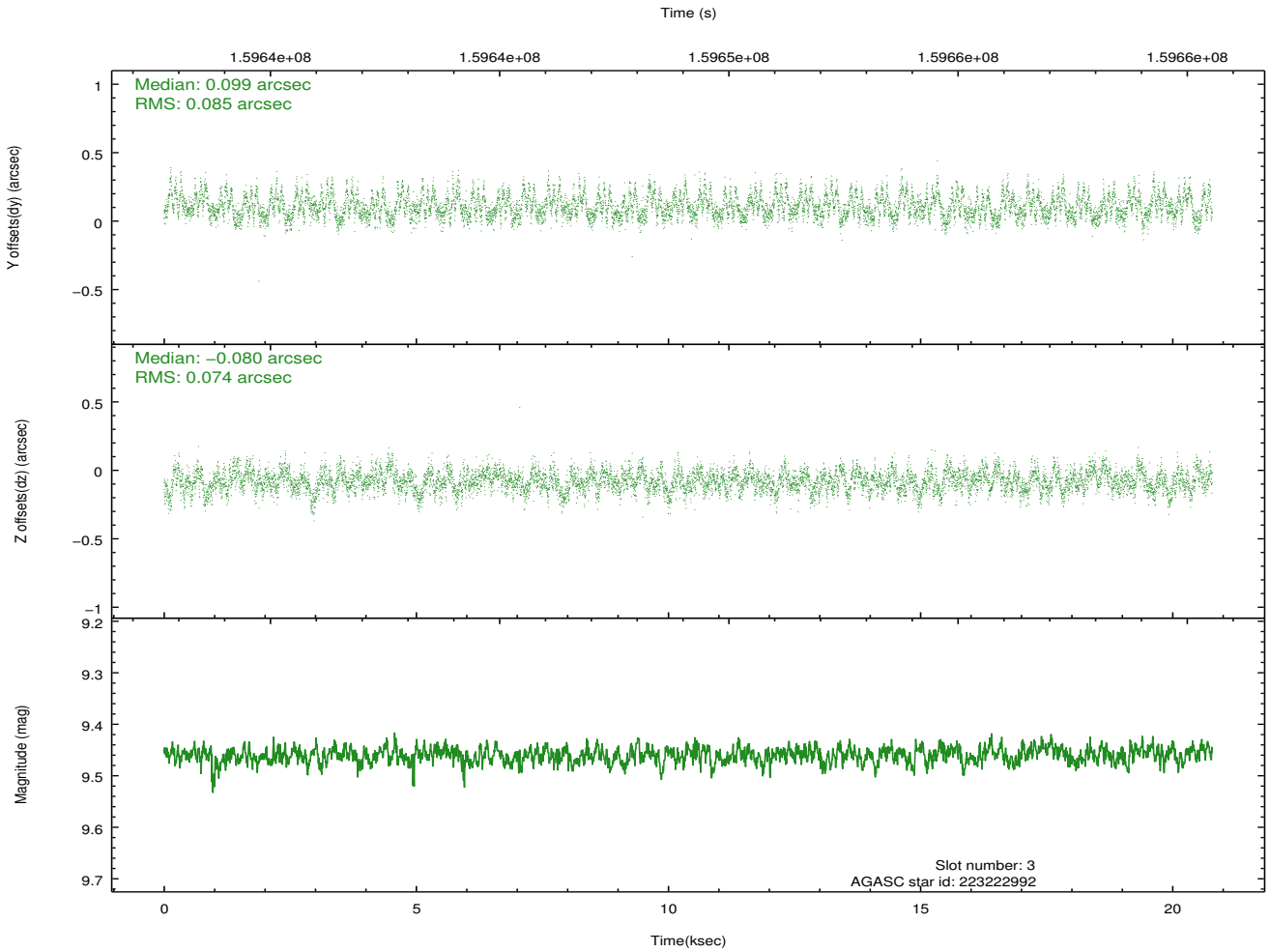
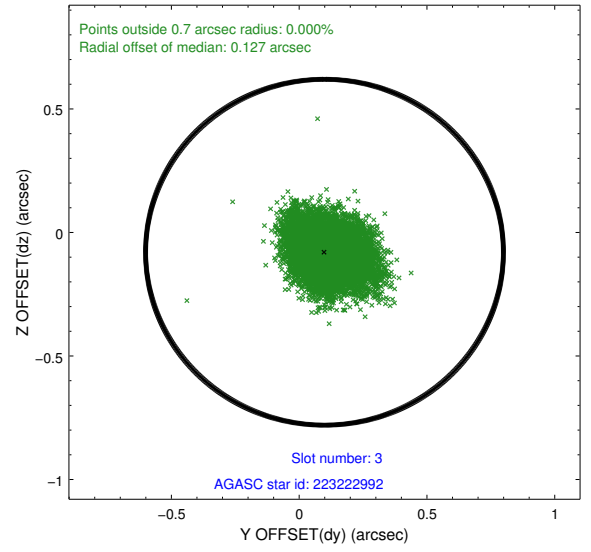
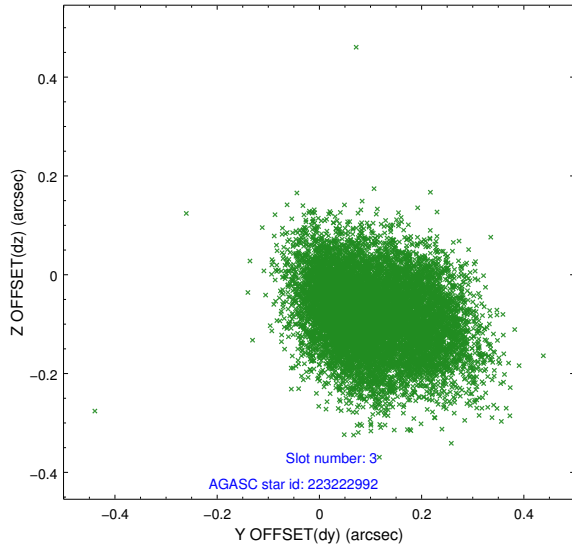


Slot Statistics

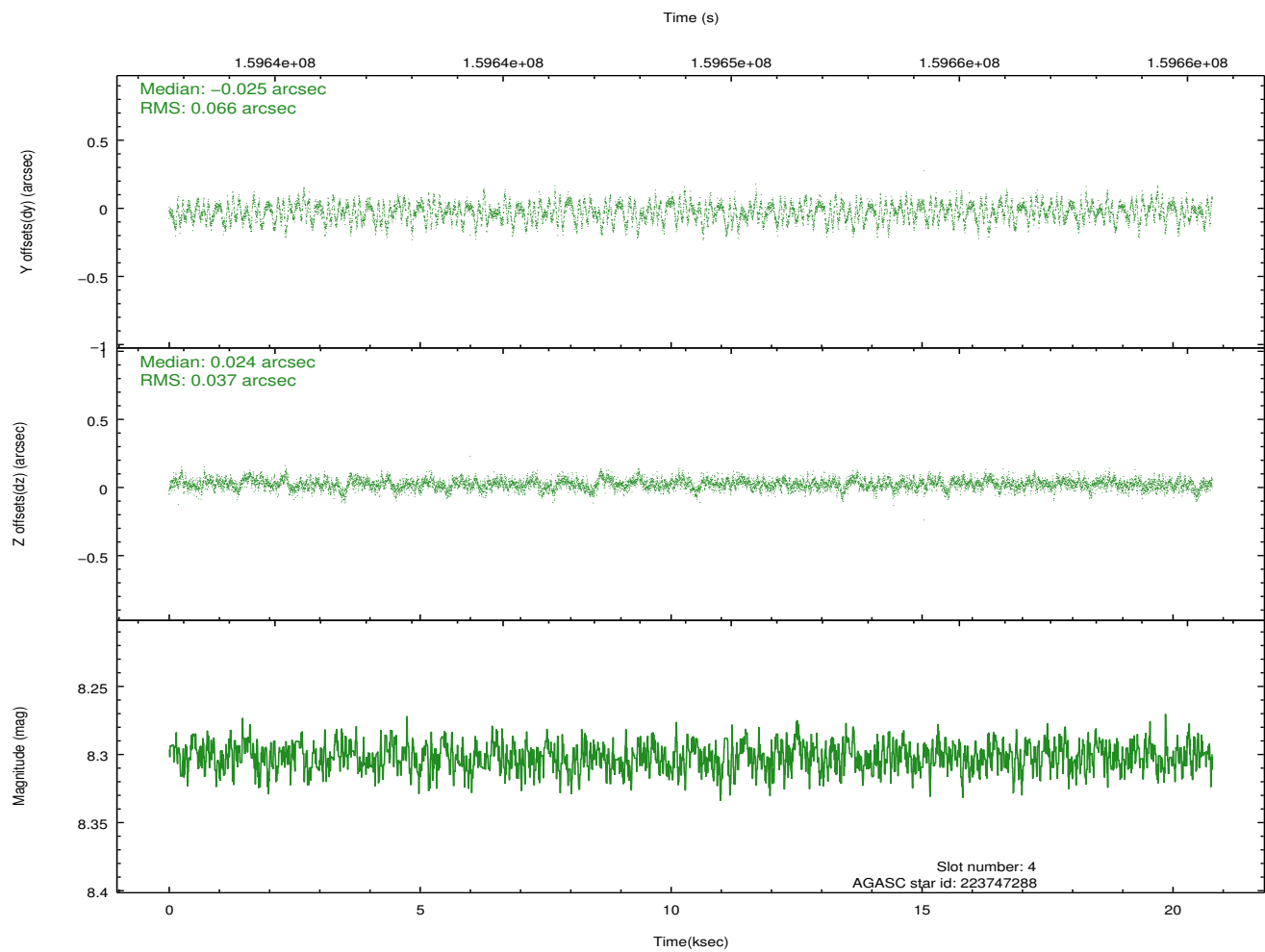
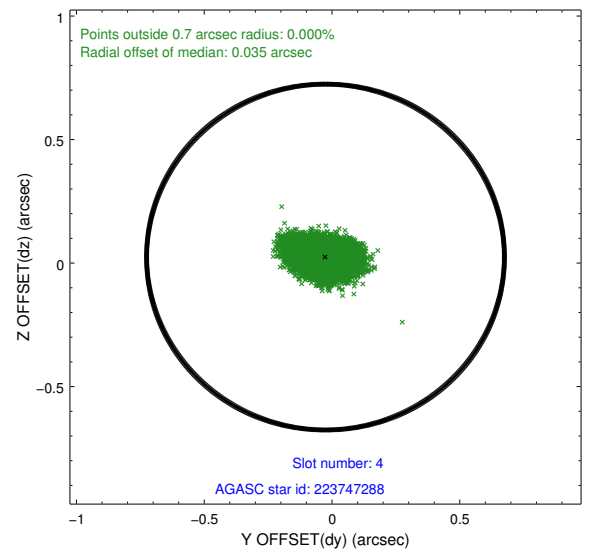
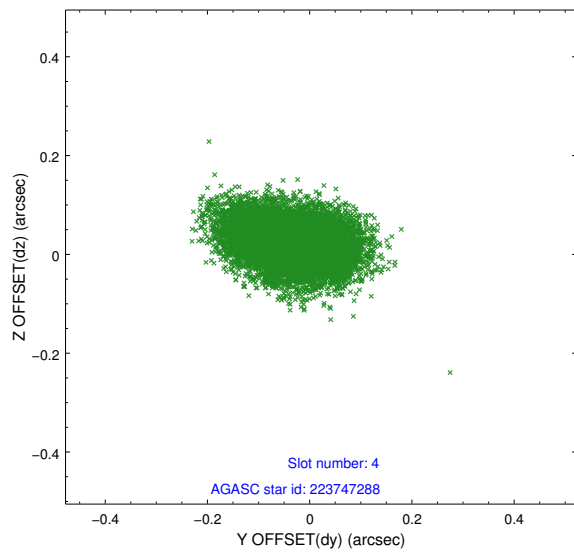
slot	status	id	mag	n_pts	med_dy	med_dz	dr1	dr2	ra	dec	mean_y	mean_z
0	FID	ACIS-I-1	7.24	5070	0.034	-0.012	0.007	0.012	0.000000	0.000000	937.81	-952.83
1	FID	ACIS-I-5	7.23	5070	-0.133	0.060	0.006	0.010	0.000000	0.000000	-1810.36	944.64
2	FID	ACIS-I-6	7.25	5070	0.008	0.022	0.007	0.012	0.000000	0.000000	403.16	1589.29
3	GUIDE	223222992	9.46	10135	0.099	-0.080	0.121	0.192	336.988566	19.882456	1285.73	-2299.95
4	GUIDE	223747288	8.30	10138	-0.025	0.024	0.079	0.132	337.111310	21.394620	-1936.73	2107.10
5	GUIDE	223218024	9.94	10130	-0.236	-0.091	0.156	0.250	336.200400	20.455137	-2079.59	-2453.65
6	GUIDE	223220704	9.07	10136	0.169	0.003	0.070	0.115	337.347219	20.149695	1581.70	-780.44
7	GUIDE	223745360	9.51	10138	-0.005	0.150	0.101	0.159	337.574956	20.842837	538.55	1613.24

2.4 Star Slots

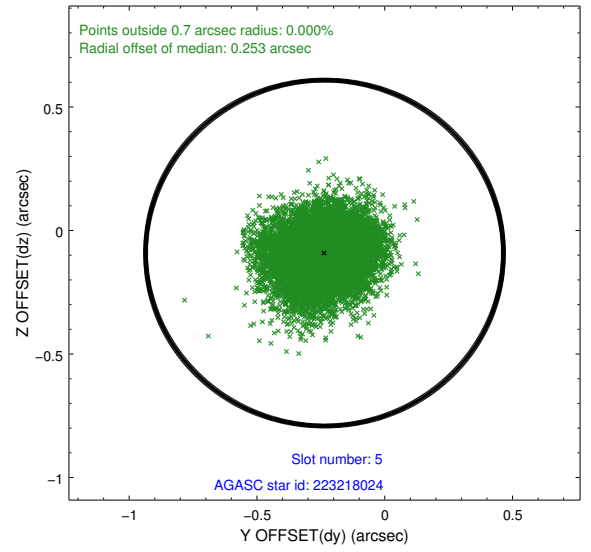
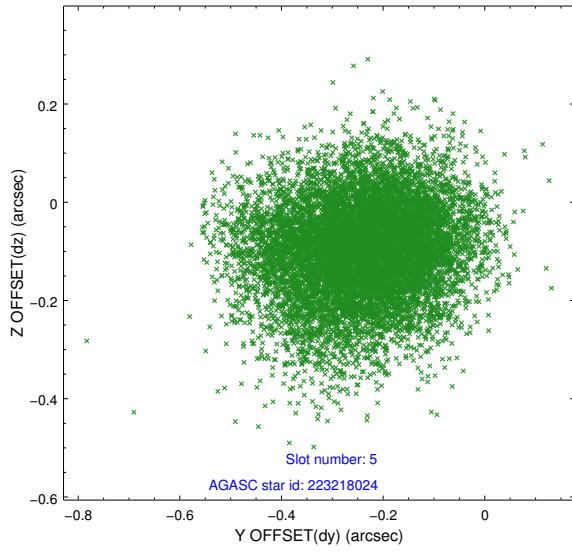
2.4.1 Slot 3



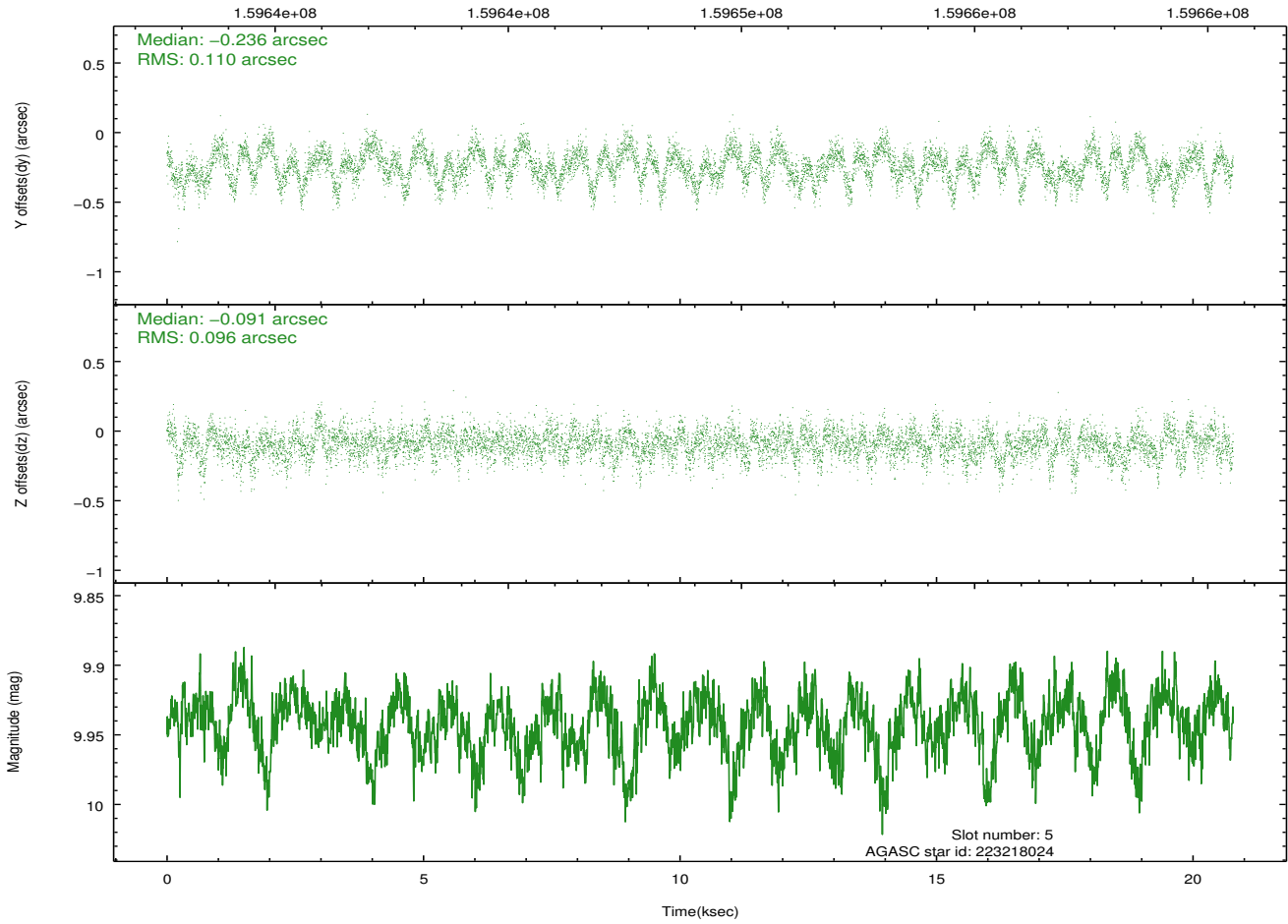
2.4.2 Slot 4



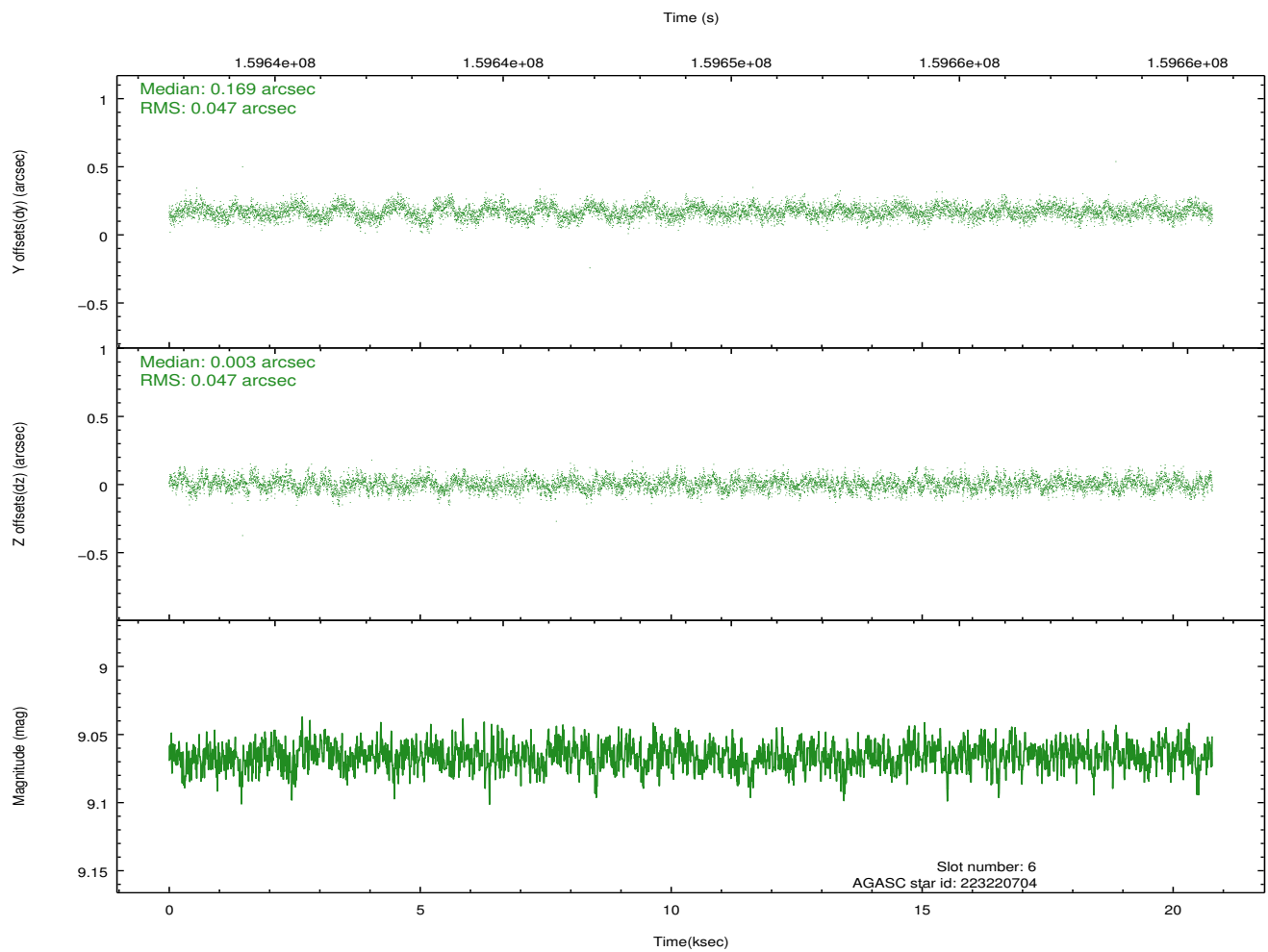
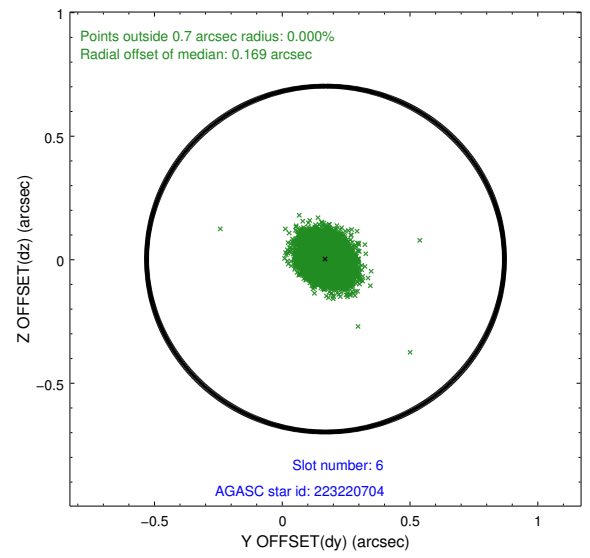
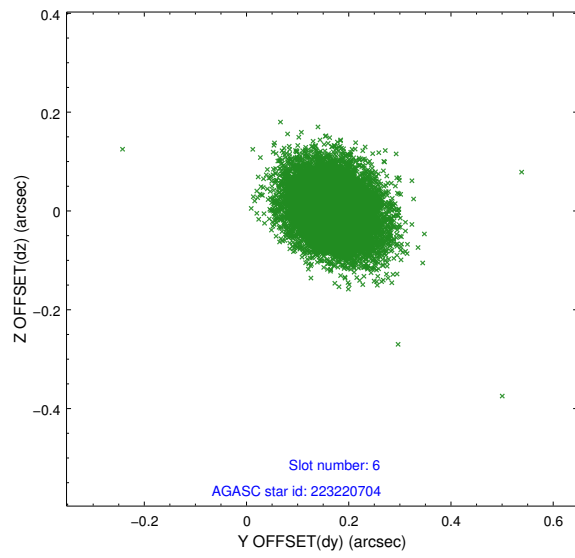
2.4.3 Slot 5



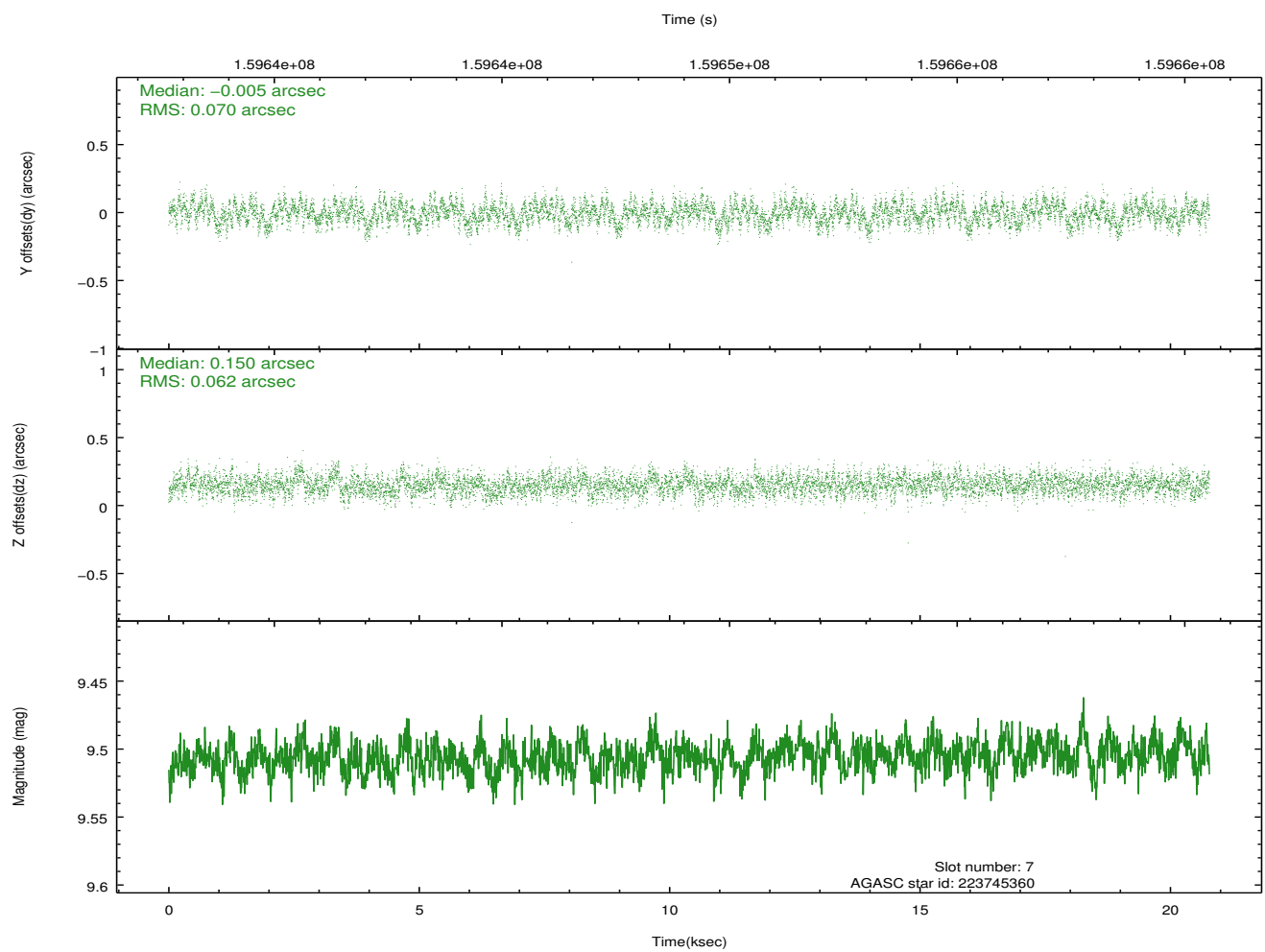
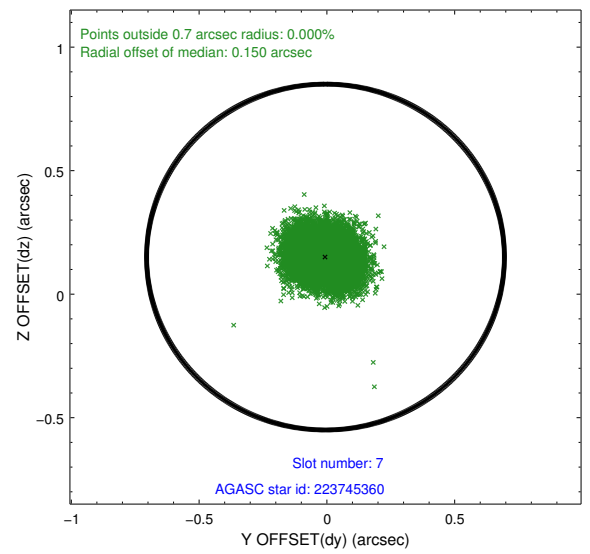
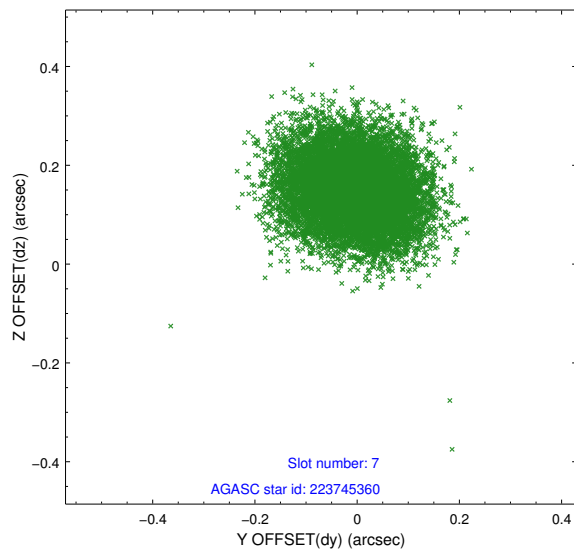
Time (s)



2.4.4 Slot 6

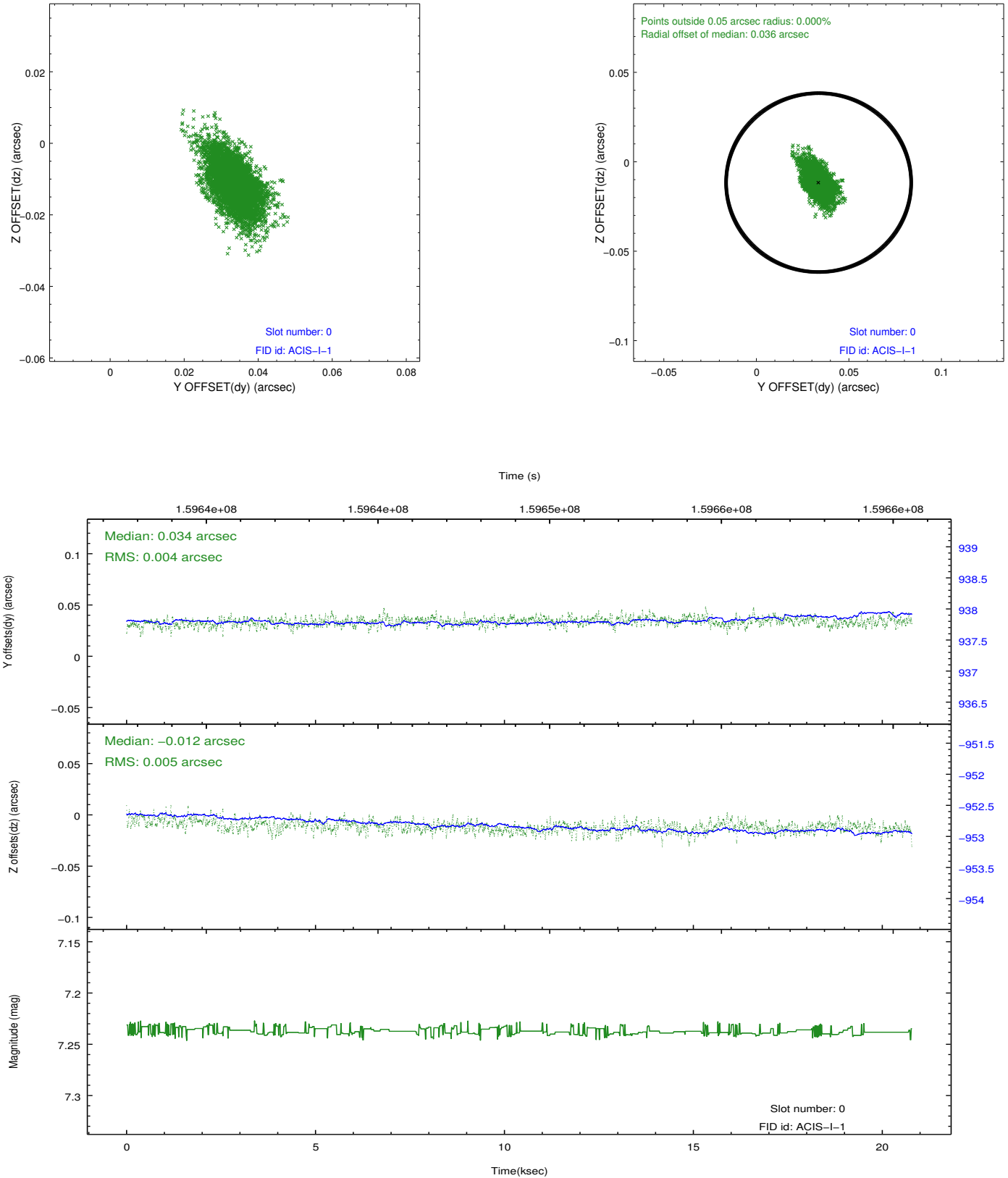


2.4.5 Slot 7

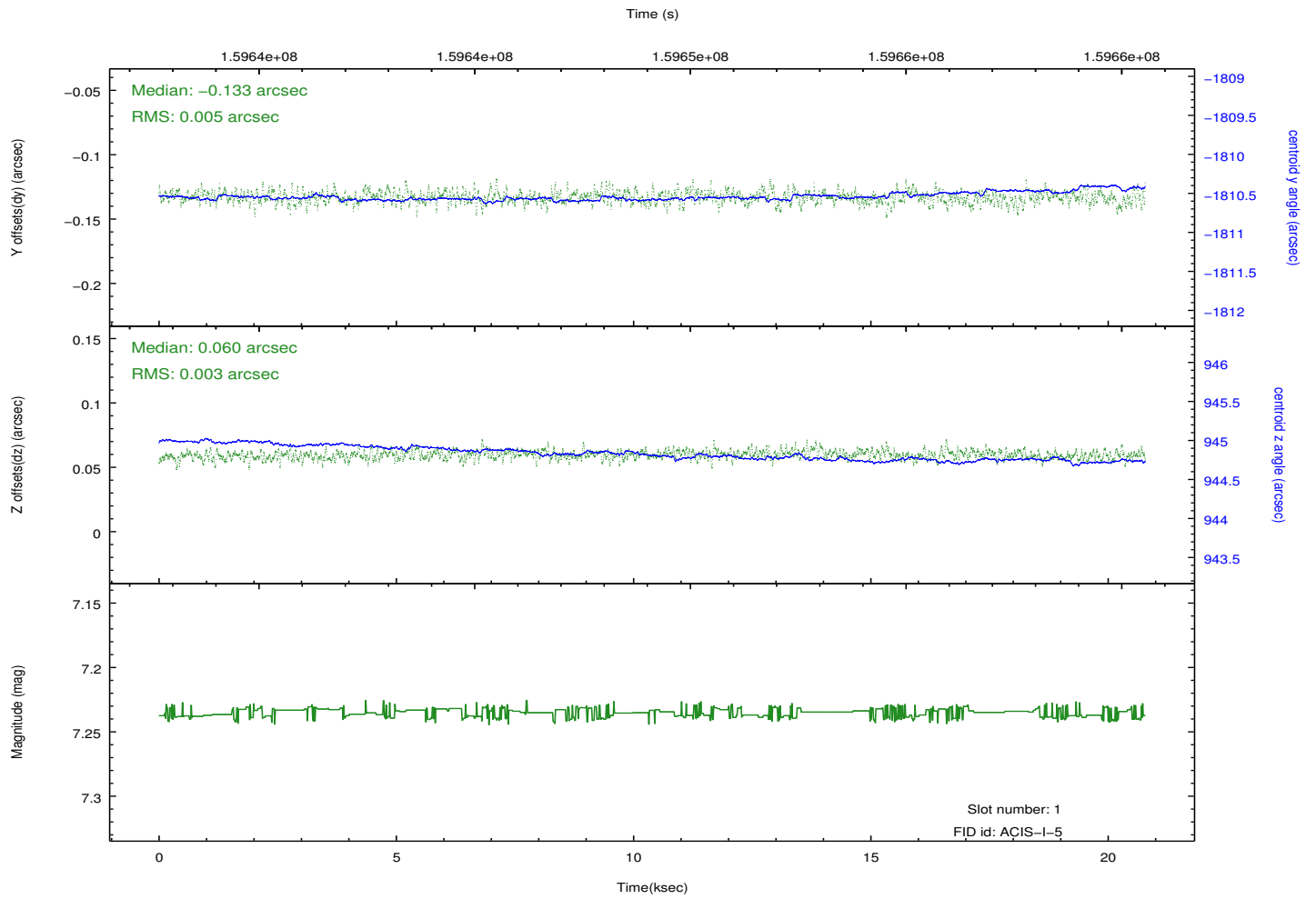
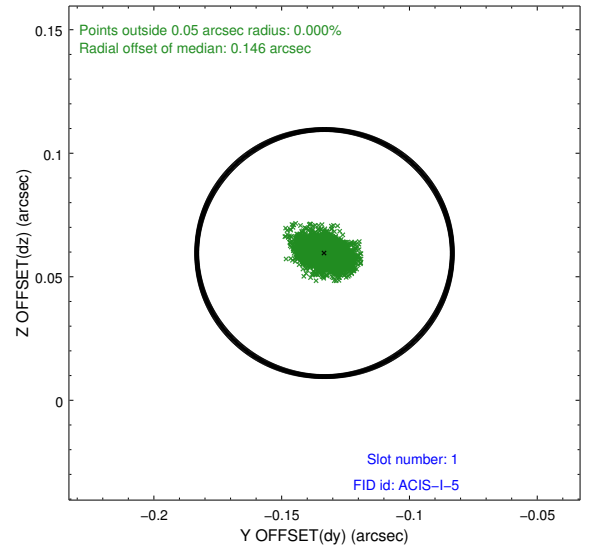
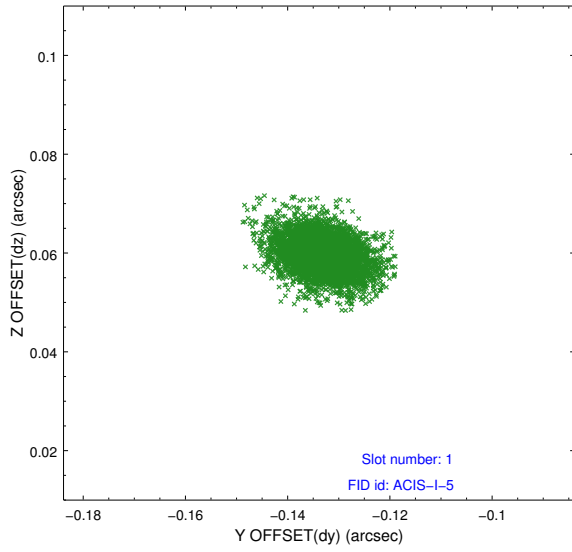


2.5 FID Slots

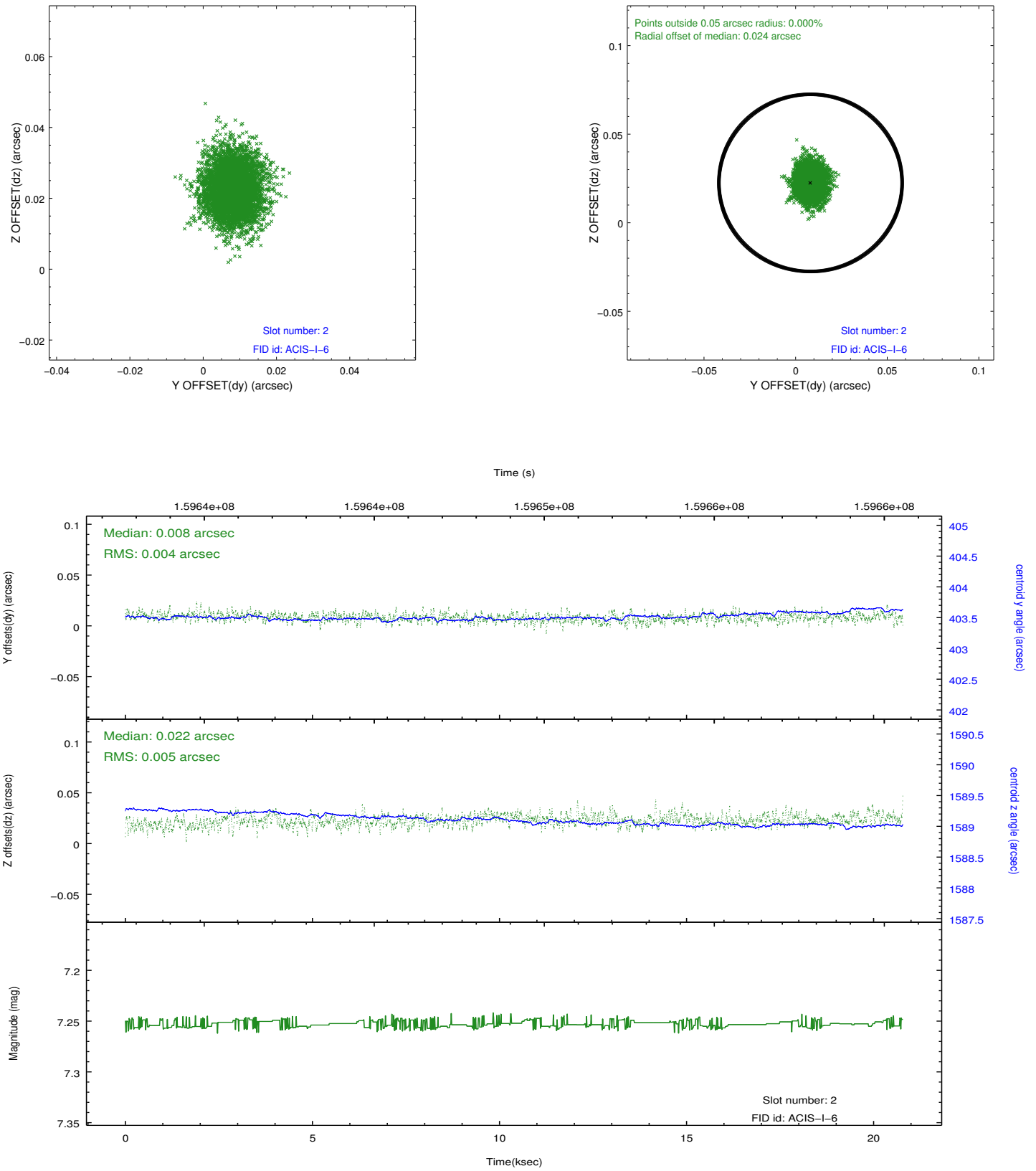
2.5.1 Slot 0



2.5.2 Slot 1



2.5.3 Slot 2



A Summary

A.1 Status

V&V Scientist	Jen Lauer
V&V Date (YYYY-MM-DD)	2012.11.01
V&V Edition	1
V&V Disposition and Status	OK
V&V Charge Time	20.118

A.2 Comments