

V&V Reference Report

L2 ASCDS Version : 8.4.5

Observation 3345 - L2 Version 3
Chandra X-Ray Center

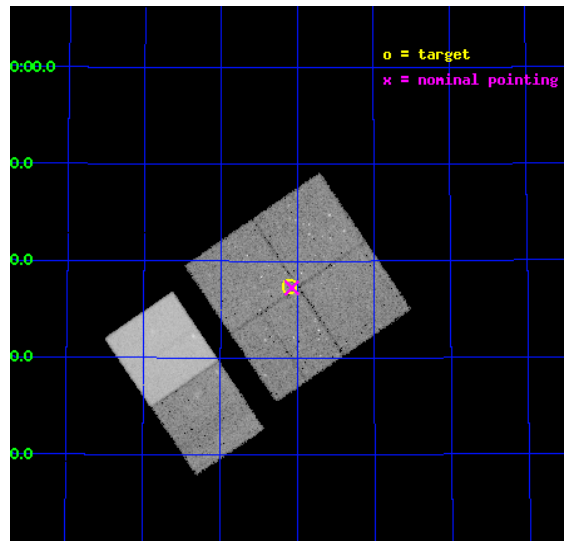
L2 Processing Date : Oct 5 2012

Contents

1	Front	2
2	OBI	3
2.1	OBI	3
2.1.1	Images	3
2.1.2	Bias	3
2.1.3	Parameters	4
2.1.4	Events	4
2.2	Compared Parameters	5
2.3	Aspect	6
2.4	Star Slots	9
2.4.1	Slot 3	9
2.4.2	Slot 4	10
2.4.3	Slot 5	11
2.4.4	Slot 6	12
2.4.5	Slot 7	13
2.5	FID Slots	14
2.5.1	Slot 0	14
2.5.2	Slot 1	15
2.5.3	Slot 2	16
A	Summary	17
A.1	Status	17
A.2	Comments	17

1 Front

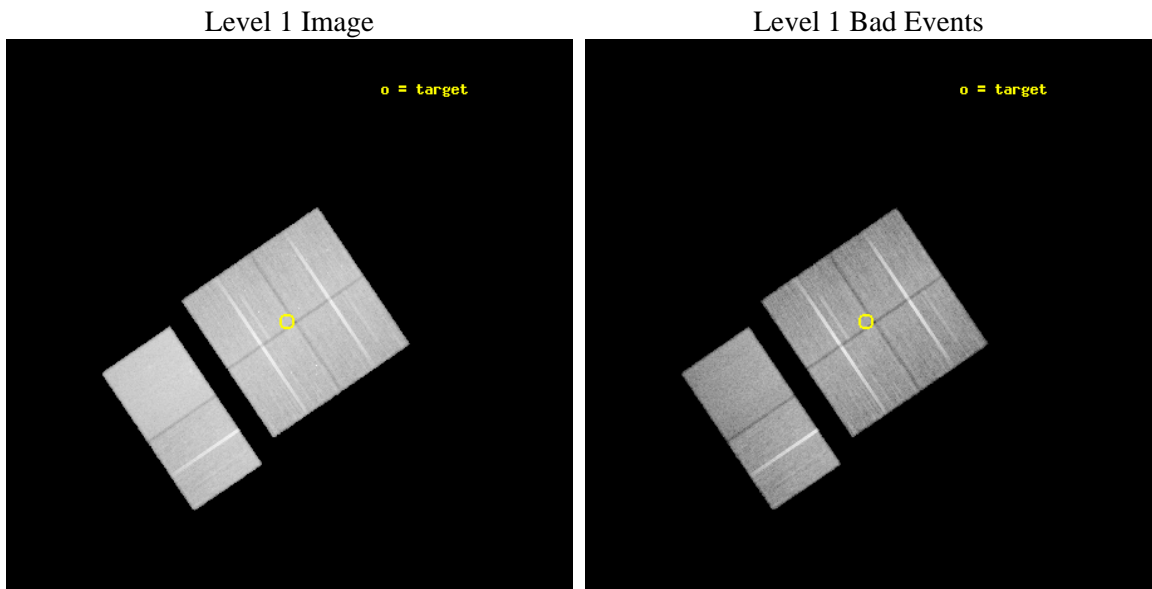
seq_num	900184	Sequence number
obs_id	3345	Observation id
title	WIDE-FIELD CHANDRA SURVEY OF THE LOCKMAN HOLE-NORTHWEST	Proposal t
observer	Prof. Amy Barger	Principal investigator
object	LH-NW-4	Source name
dtcycle	0	
cycle	P	events from which exps? Prim/Second/Both
ra_targ	158.025009	Observer's specified target RA [deg]
dec_targ	57.623608	Observer's specified target Dec [deg]
ra_nom	158.01766527228	Nominal RA [deg]
dec_nom	57.621085821997	Nominal Dec [deg]
roll_nom	235.80981303283	Nominal Roll [deg]
revision	3	Processing version of data
ontime	38956.758894593	Sum of GTIs [s]
livetime	38463.464956525	Livetime [s]
ontime0	38953.517874509	Sum of GTIs [s]
ontime1	38950.276974052	Sum of GTIs [s]
ontime2	38950.276983976	Sum of GTIs [s]
ontime3	38956.758894593	Sum of GTIs [s]
ontime6	38956.758874685	Sum of GTIs [s]
ontime7	38959.999854863	Sum of GTIs [s]
l2events	262180	Number of level 2 events



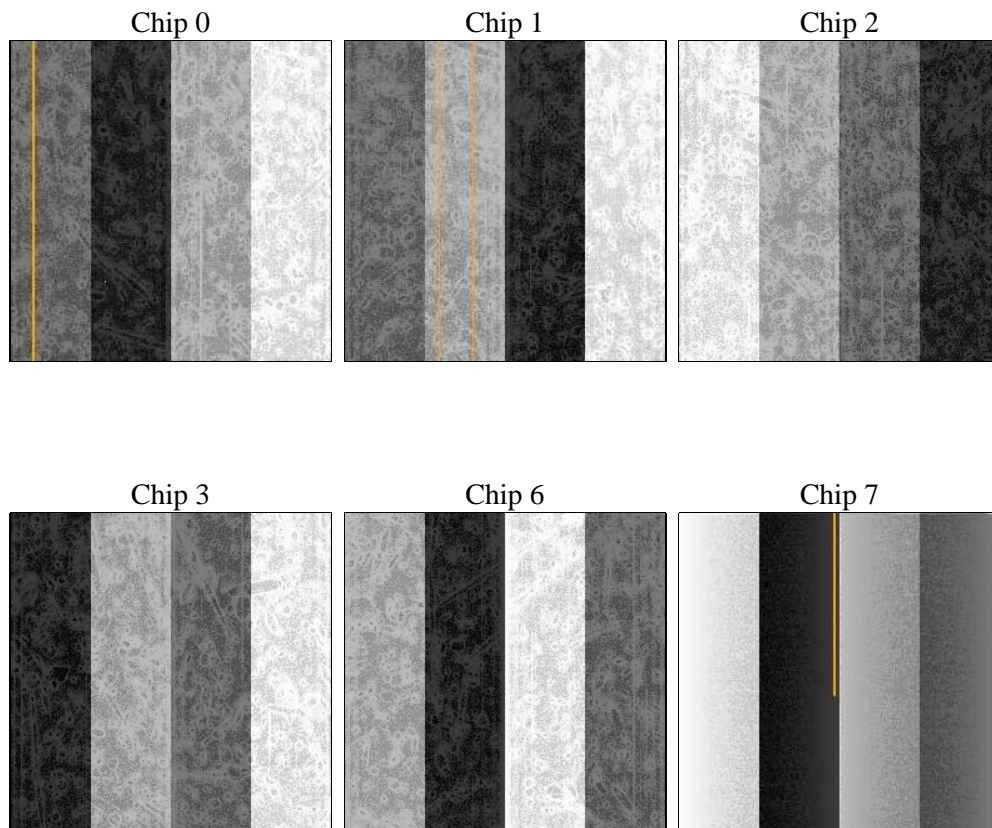
2 OBI

2.1 OBI

2.1.1 Images



2.1.2 Bias



2.1.3 Parameters

obi_num	0	Obi number	sched_exp_time	39000.000000	[s] Scheduled observation exposure time
ascdsver	8.4.5	Processing system revision	ontime	38956.758894593	Sum of GTIs [s]
caldbver	4.5.2	 	ontime0	38953.517874509	Sum of GTIs [s]
date	2012-10-05T17:37:20	Date and time of file creation	ontime1	38950.276974052	Sum of GTIs [s]
revision	3	Processing version of data	ontime2	38950.276983976	Sum of GTIs [s]
			ontime3	38956.758894593	Sum of GTIs [s]
			ontime6	38956.758874685	Sum of GTIs [s]
			ontime7	38959.999854863	Sum of GTIs [s]
			l1events	1550142	Number of level 1 events

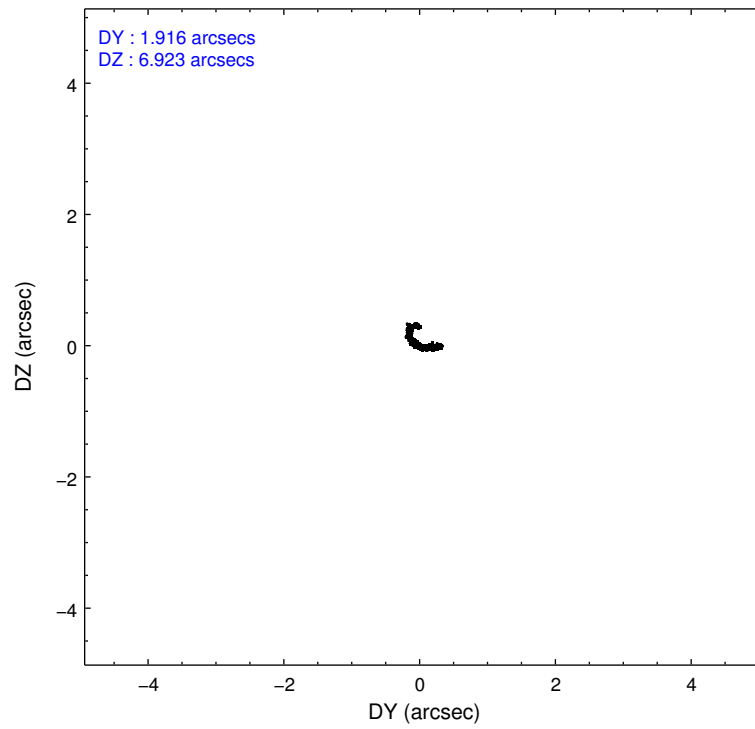
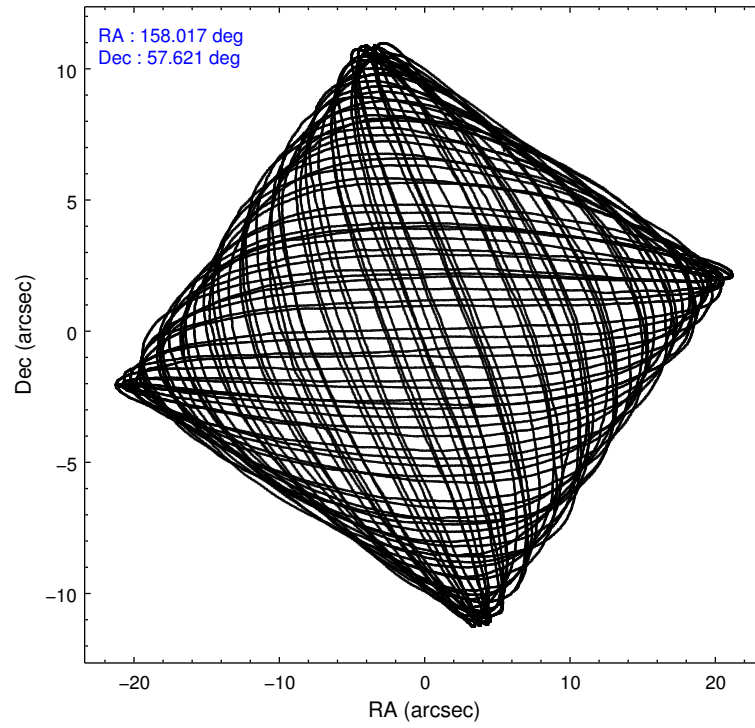
2.1.4 Events

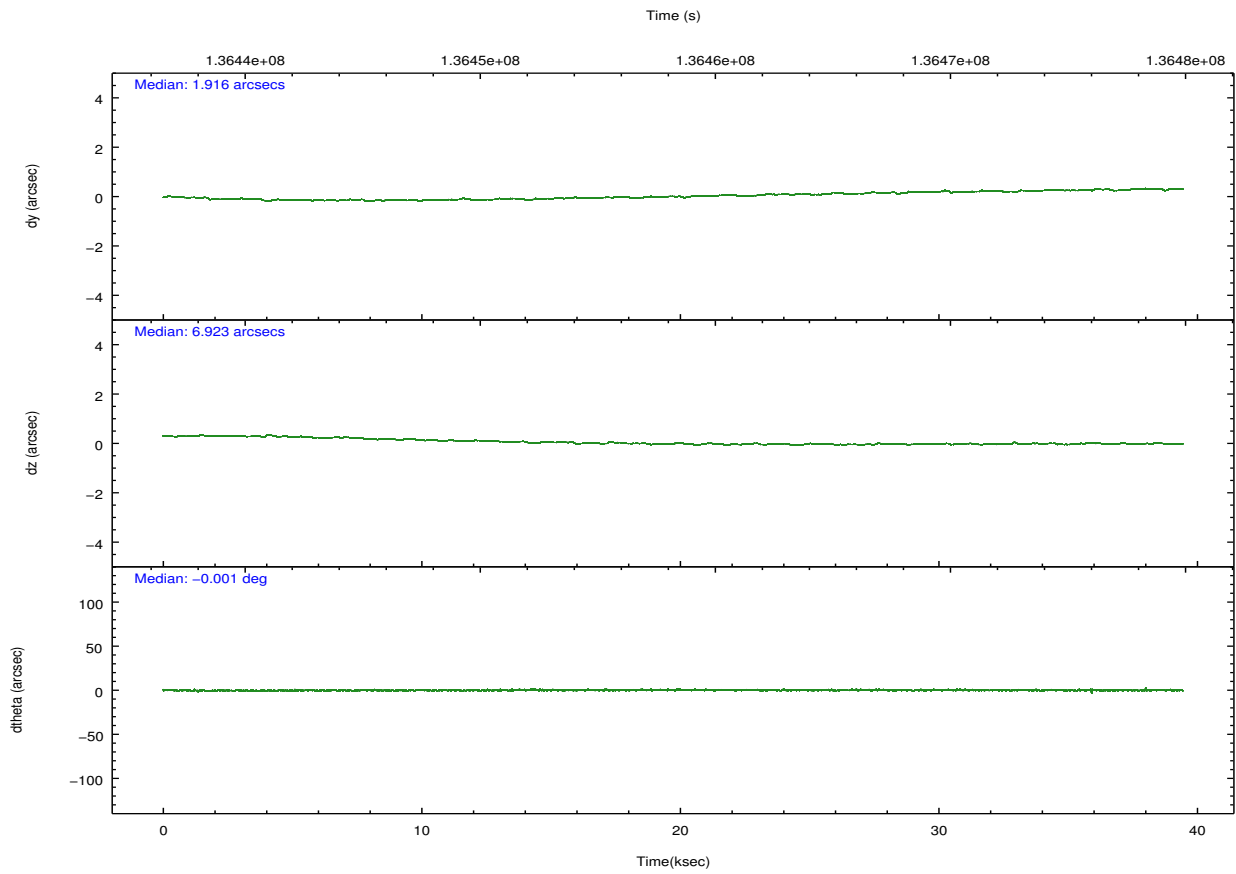
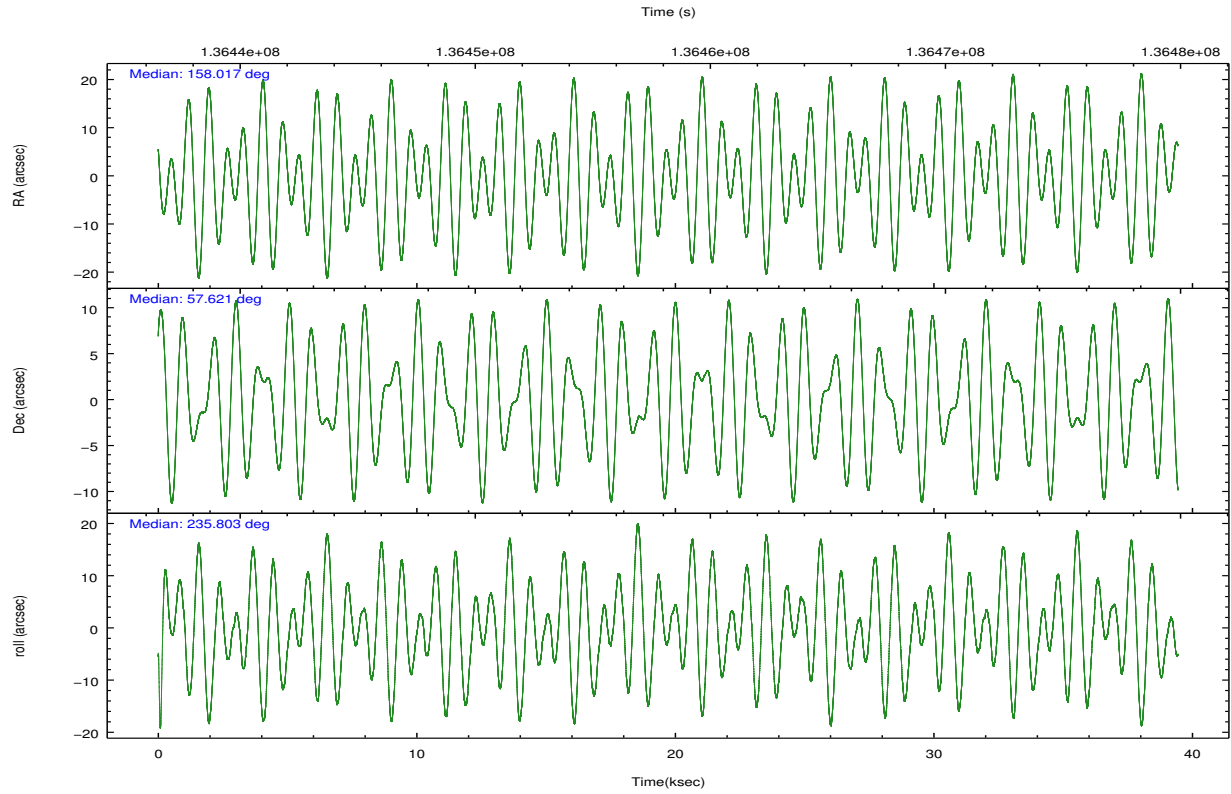
	ccd 0	ccd 1	ccd 2	ccd 3	ccd 6	ccd 7		ccd 0	ccd 1	ccd 2	ccd 3	ccd 6	ccd 7
level 1 events	228014	232549	252179	250045	261236	326119	grade 0 events	12540	13550	13366	12370	11953	12578
rejected events	198391	200295	221872	220938	231259	191041		5%	5%	5%	4%	4%	3%
rejected %	87%	86%	87%	88%	88%	58%	grade 1 events	104	115	121	116	134	290
								0%	0%	0%	0%	0%	0%
							grade 2 events	6342	6486	6378	5905	6116	26710
								2%	2%	2%	2%	2%	8%
							grade 3 events	2906	3069	2714	2769	3034	12095
								1%	1%	1%	1%	1%	3%
							grade 4 events	2583	3131	2691	2833	2864	11978
								1%	1%	1%	1%	1%	3%
							grade 5 events	9321	10169	8997	10123	11042	31310
								4%	4%	3%	4%	4%	9%
							grade 6 events	5258	6026	5166	5238	6017	71736
								2%	2%	2%	2%	2%	21%
							grade 7 events	188960	190003	212746	210691	220076	159422
								82%	81%	84%	84%	84%	48%

2.2 Compared Parameters

Parameter	Planned	Actual	Parameter	Planned	Actual
Instrument	ACIS	ACIS	Obspar format version number	7	7
Detector	ACIS-012367	ACIS-012367	Obspar file type	PREDICTED	ACTUAL
Grating	NONE	NONE	Obspar update status	NONE	UPDATED
Data mode	VFAINT	VFAINT	Number of optional ACIS chips dropped	0	0
Observation mode	POINTING	POINTING	On-chip summing requested	N	N
[deg] Pointing RA	158.021274	158.0176652722814	Subarray requested	NONE	NONE
[deg] Pointing Dec	57.648410	57.62108582199683	Alternating exposures requested	N	N
[deg] Pointing Roll	235.598082	235.8098130328266	[s] Primary exposure time	0.000000	3.2
[mm] SIM focus pos	-0.782348	-0.7809083437167272			
[mm] SIM defocus	0	0.001439871863259334			
[mm] SIM translation stage pos	-233.592463	-233.5874344608287			
[mm] SIM translation stage offset	0	-0.005018542100998502			
[s] Observation start time (MET)	136438917.184000	136437825.13711			
Observation start date	2002-04-29T03:40:53	2002-04-29T03:23:45			
[s] Observation end time (MET)	136477917.184000	136478543.77627			
Observation end date	2002-04-29T14:30:53	2002-04-29T14:42:23			
Read mode	TIMED	TIMED			

2.3 Aspect



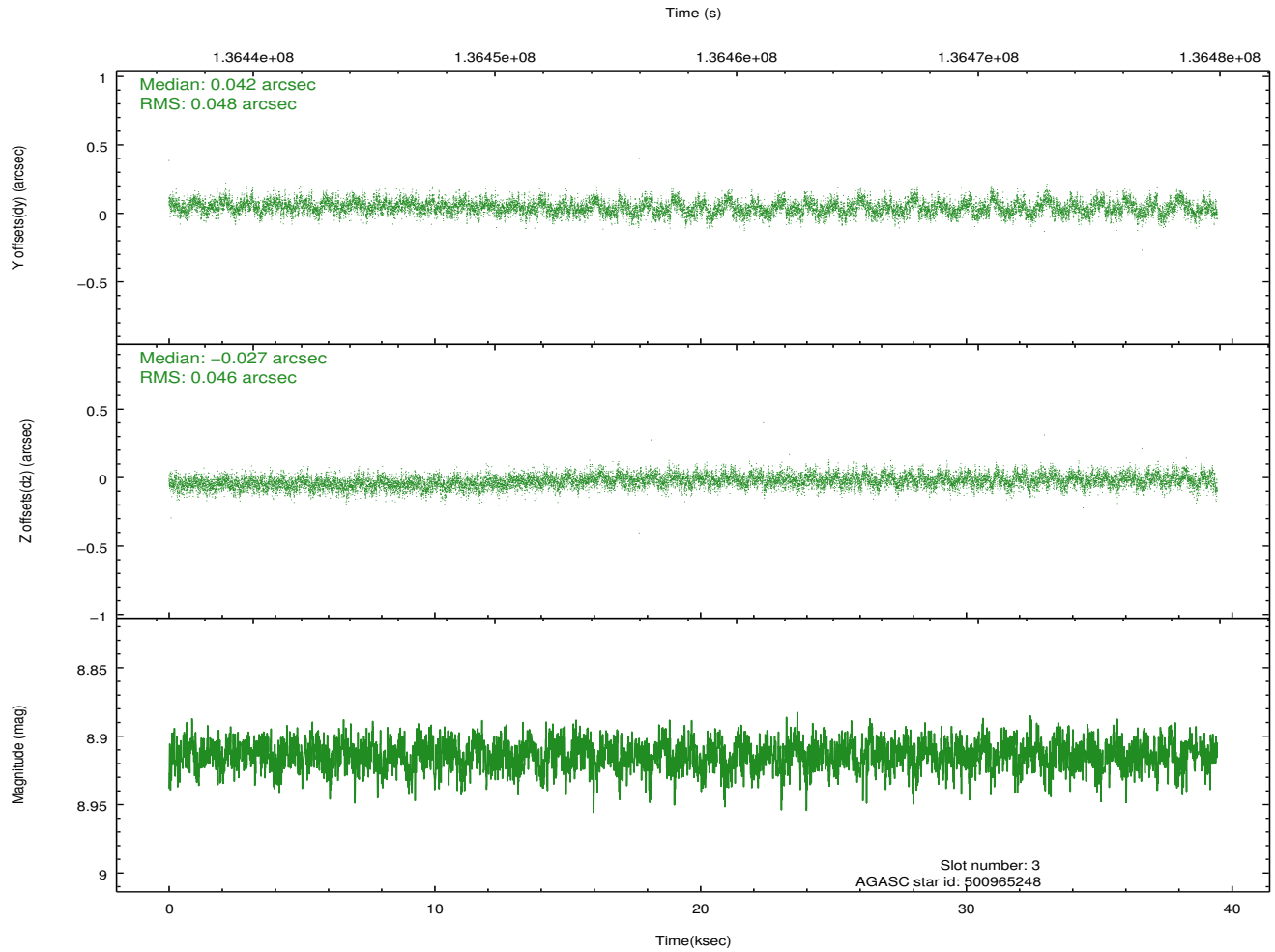
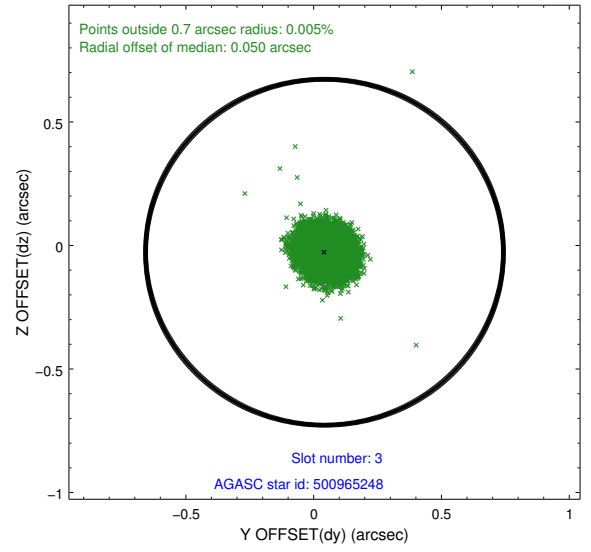
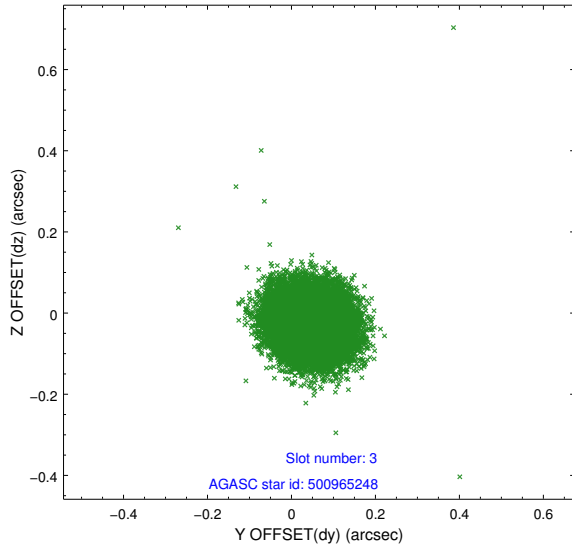


Slot Statistics

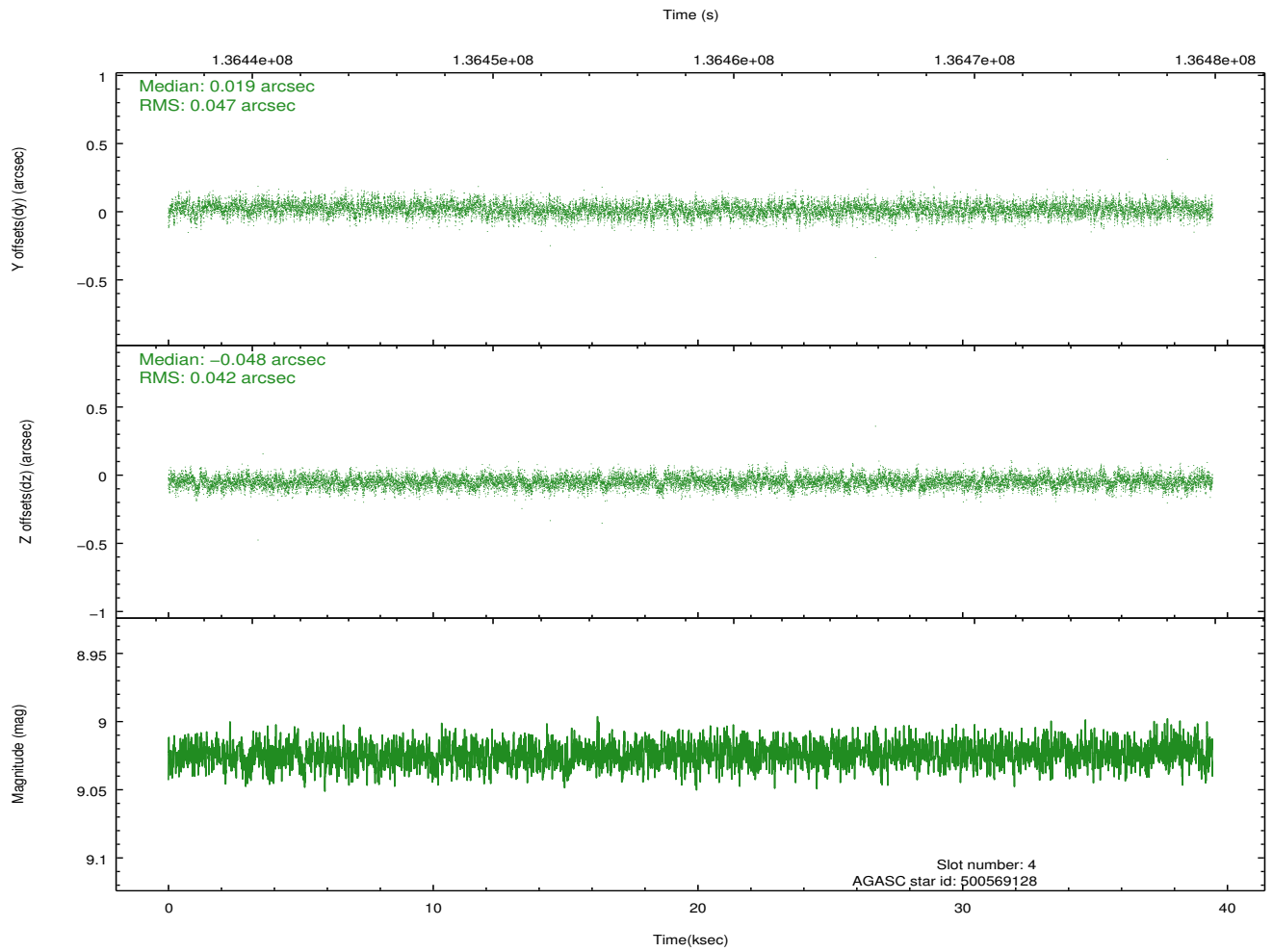
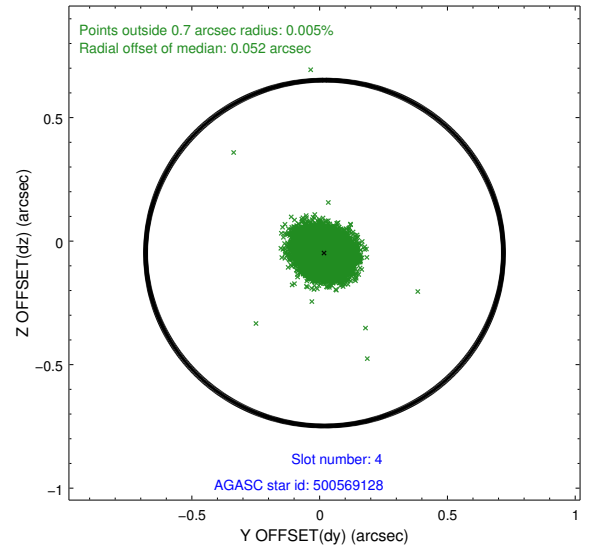
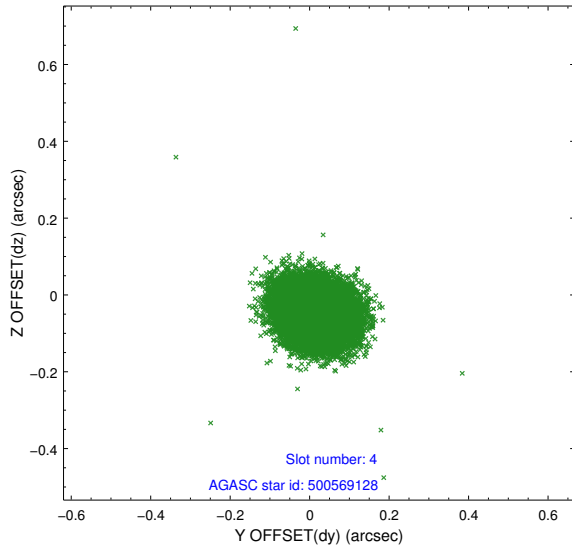
slot	status	id	mag	n_pts	med_dy	med_dz	dr1	dr2	ra	dec	mean_y	mean_z
0	FID	ACIS-I-1	7.24	9619	-0.008	0.024	0.008	0.014	0.000000	0.000000	937.84	-830.38
1	FID	ACIS-I-5	7.23	9620	-0.040	0.047	0.010	0.019	0.000000	0.000000	-1810.25	1067.19
2	FID	ACIS-I-6	7.26	9621	-0.042	-0.001	0.009	0.014	0.000000	0.000000	403.39	1711.62
3	GUIDE	500965248	8.91	19237	0.042	-0.027	0.071	0.114	157.040068	57.653140	1041.75	-1575.80
4	GUIDE	500569128	9.02	19235	0.019	-0.048	0.067	0.108	157.930103	57.115848	1681.22	936.67
5	GUIDE	500962432	9.52	19232	-0.020	0.002	0.114	0.184	158.977500	58.020820	-2147.78	740.04
6	GUIDE	500964584	10.16	19212	0.071	-0.042	0.149	0.263	157.258707	57.744776	533.91	-1408.65
7	GUIDE	500965928	10.25	19152	-0.112	0.119	0.154	0.248	159.388587	57.791439	-1930.23	1859.45

2.4 Star Slots

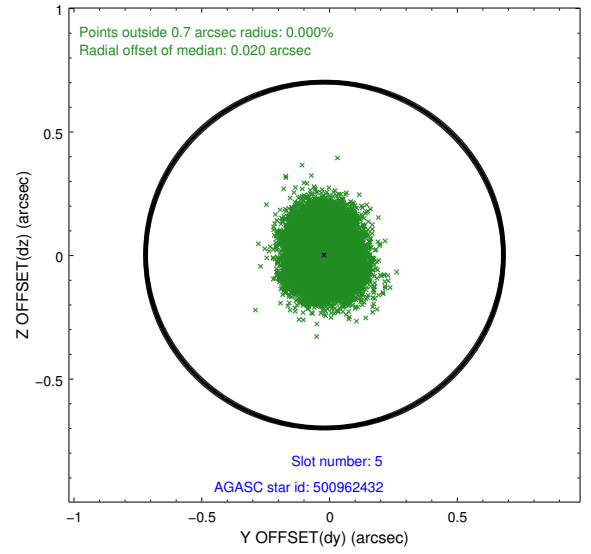
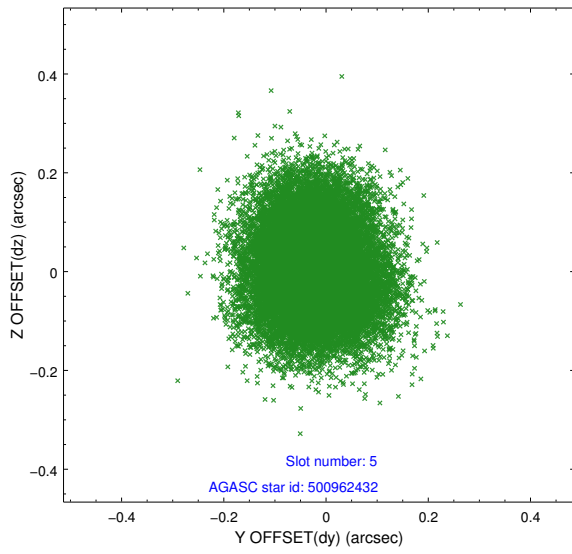
2.4.1 Slot 3



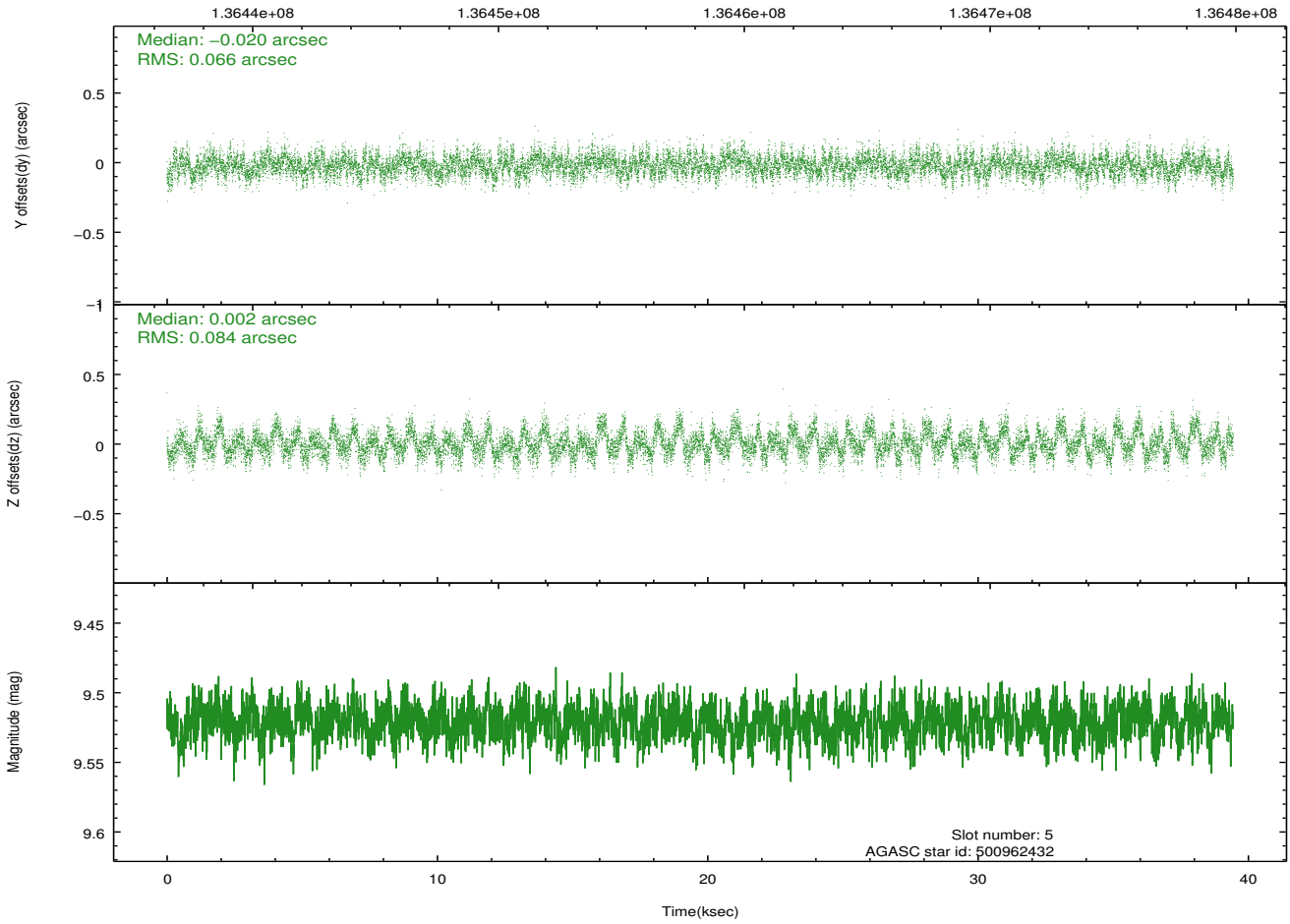
2.4.2 Slot 4



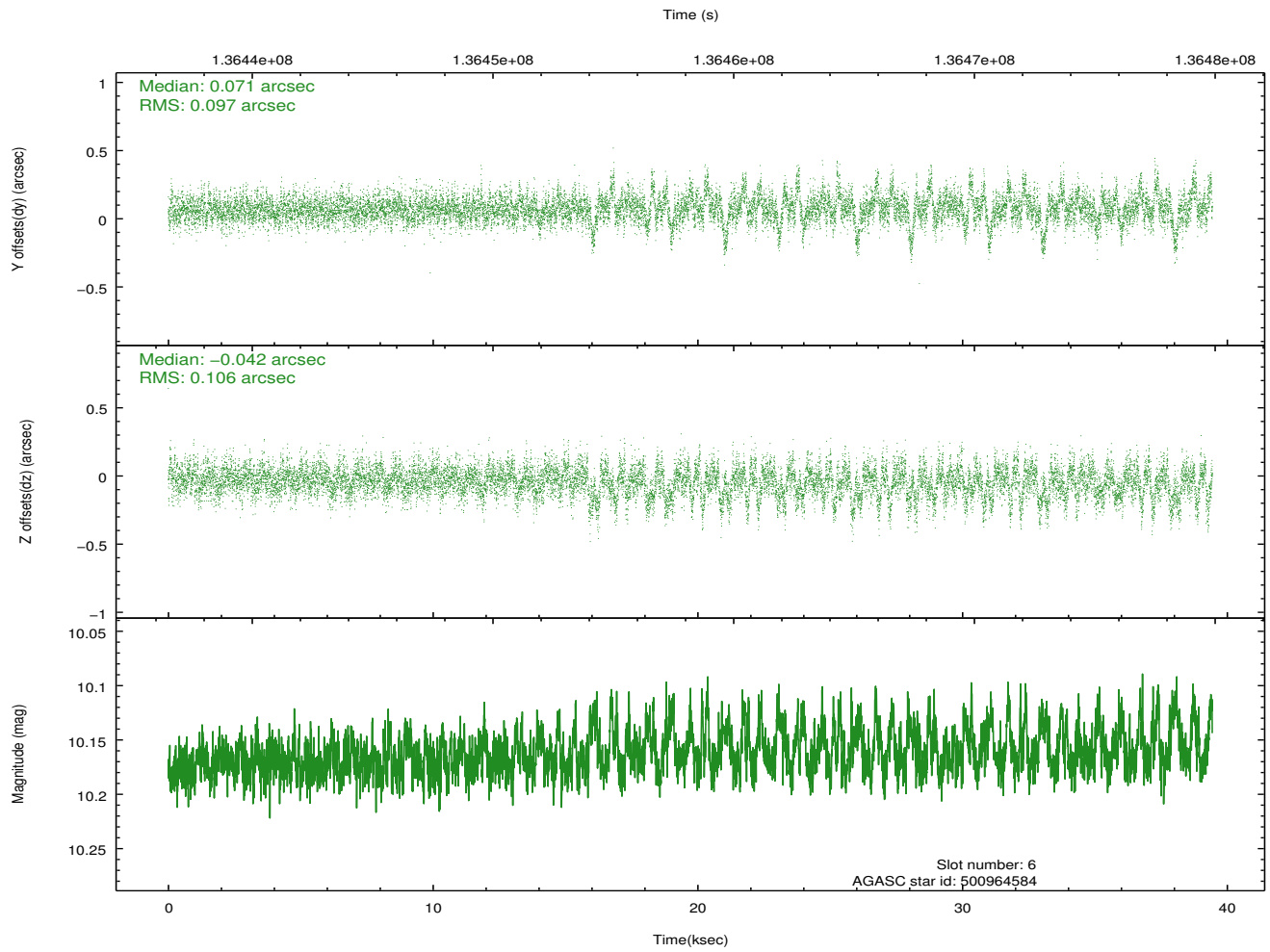
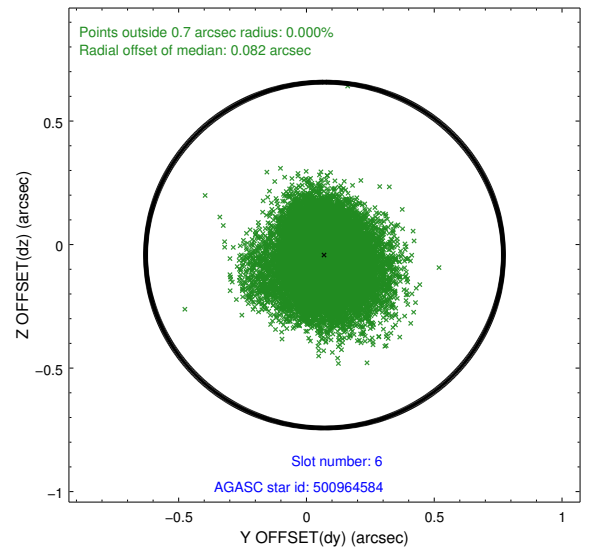
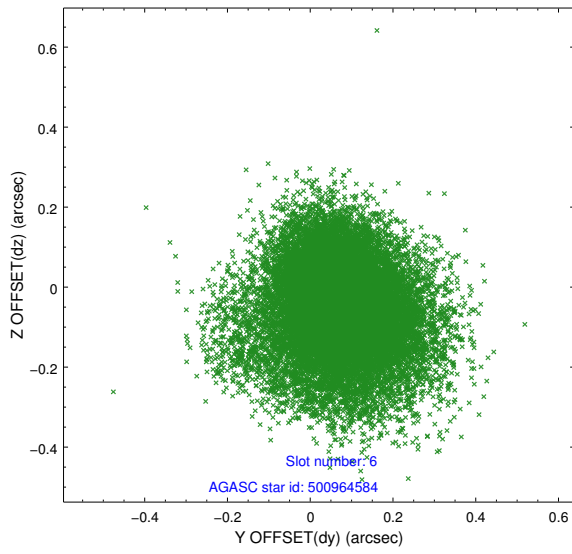
2.4.3 Slot 5



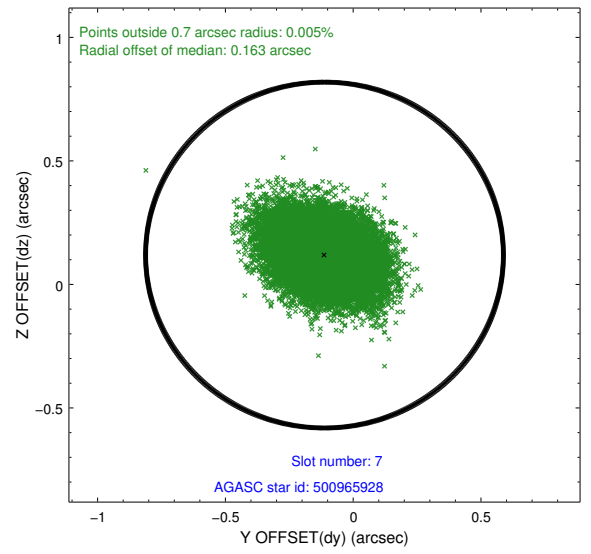
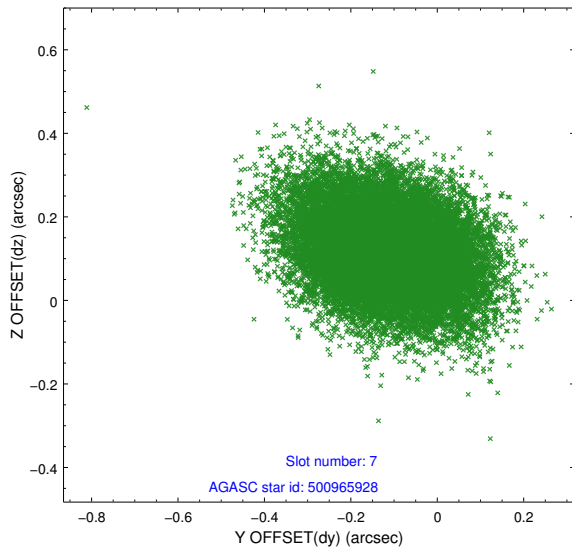
Time (s)



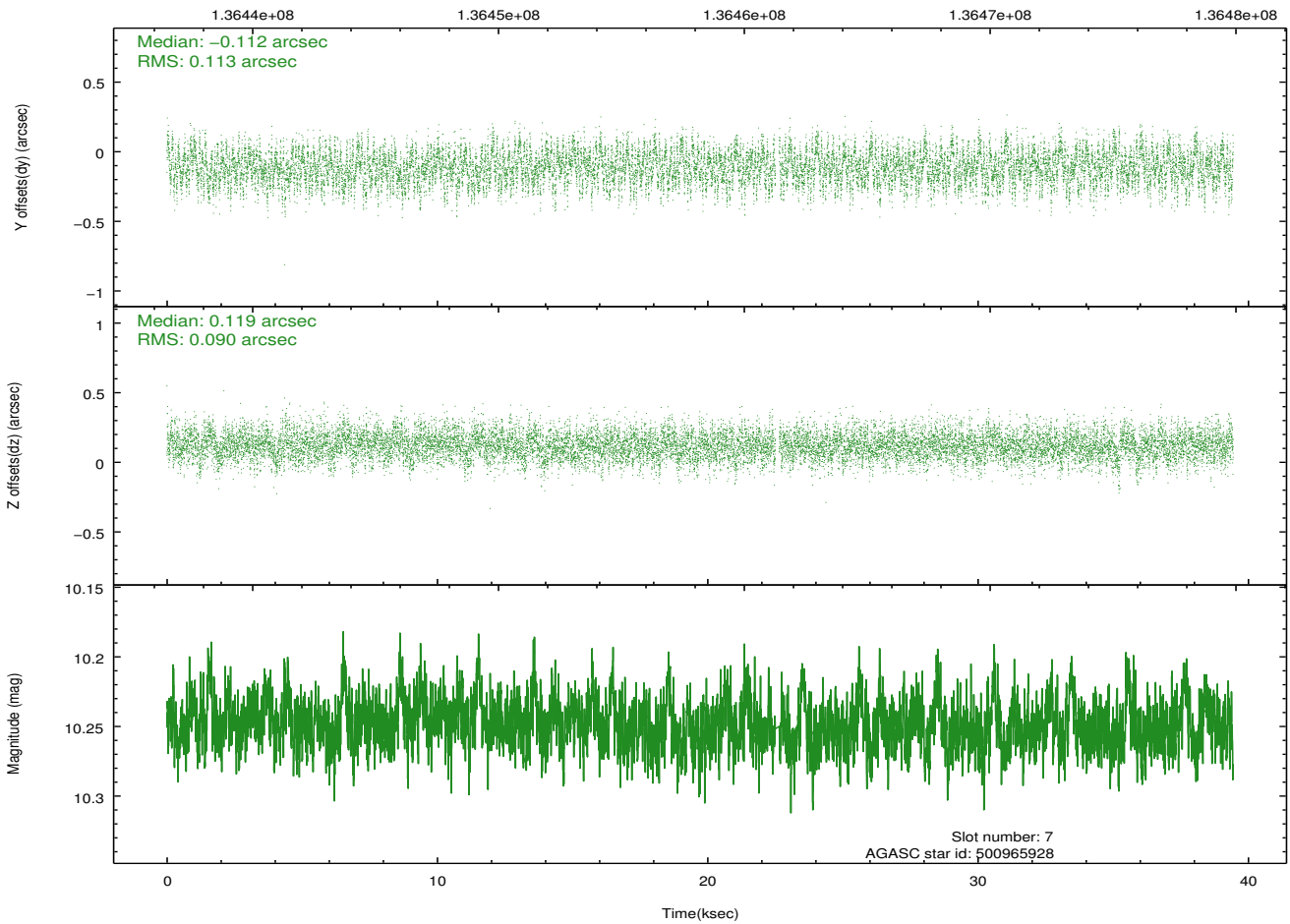
2.4.4 Slot 6



2.4.5 Slot 7

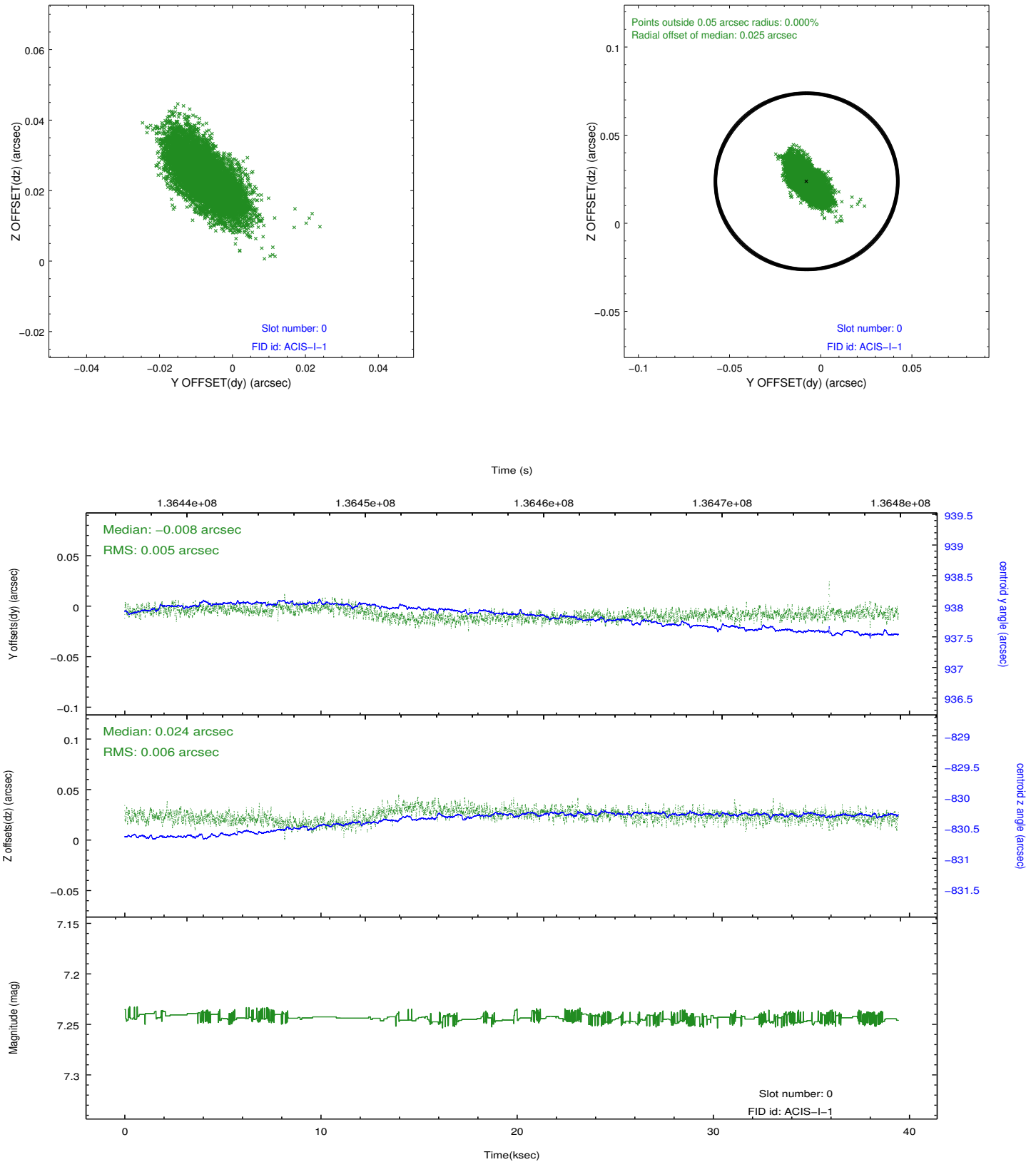


Time (s)

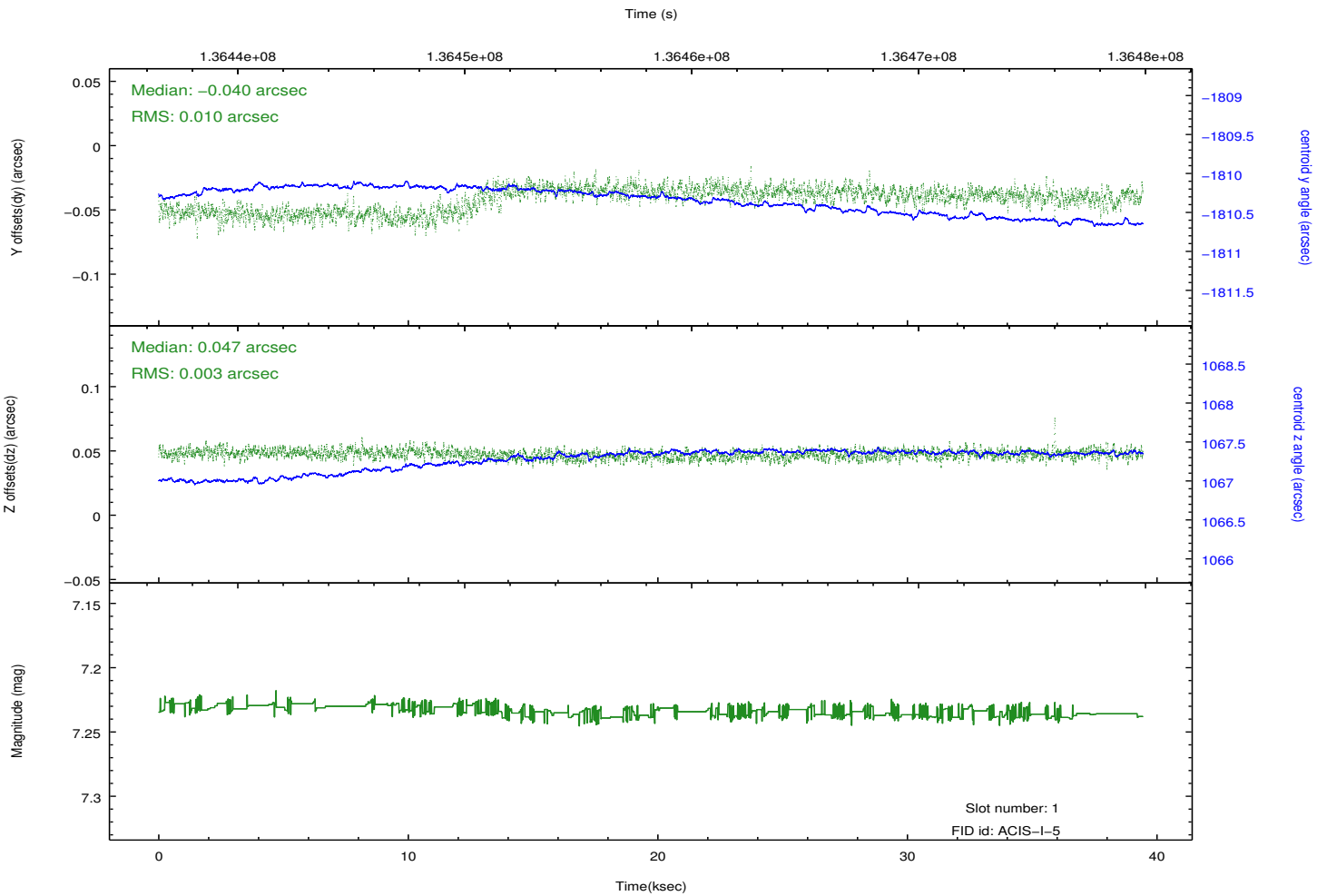
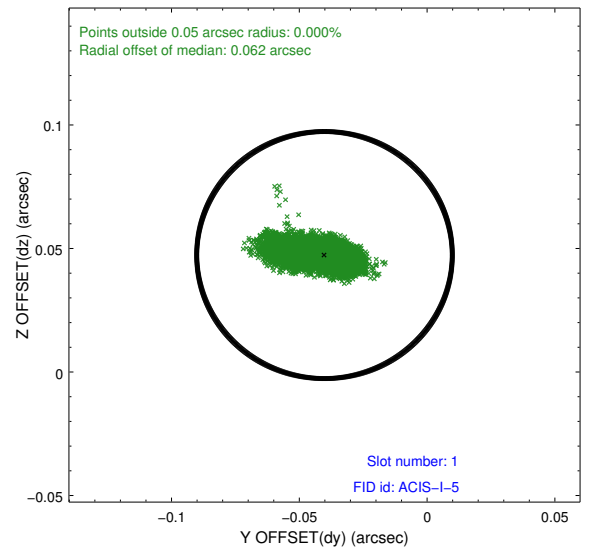
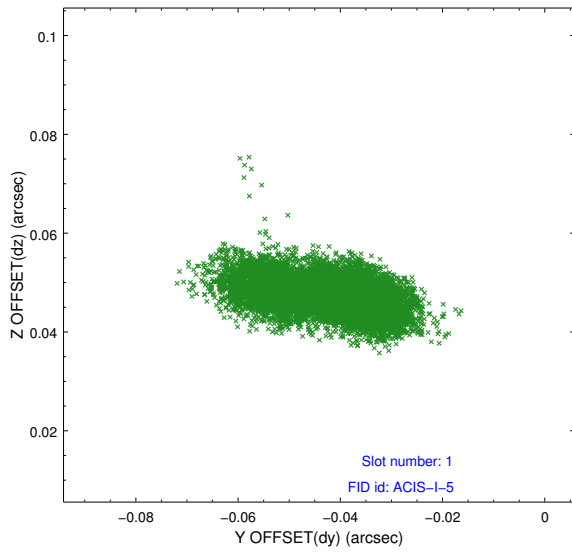


2.5 FID Slots

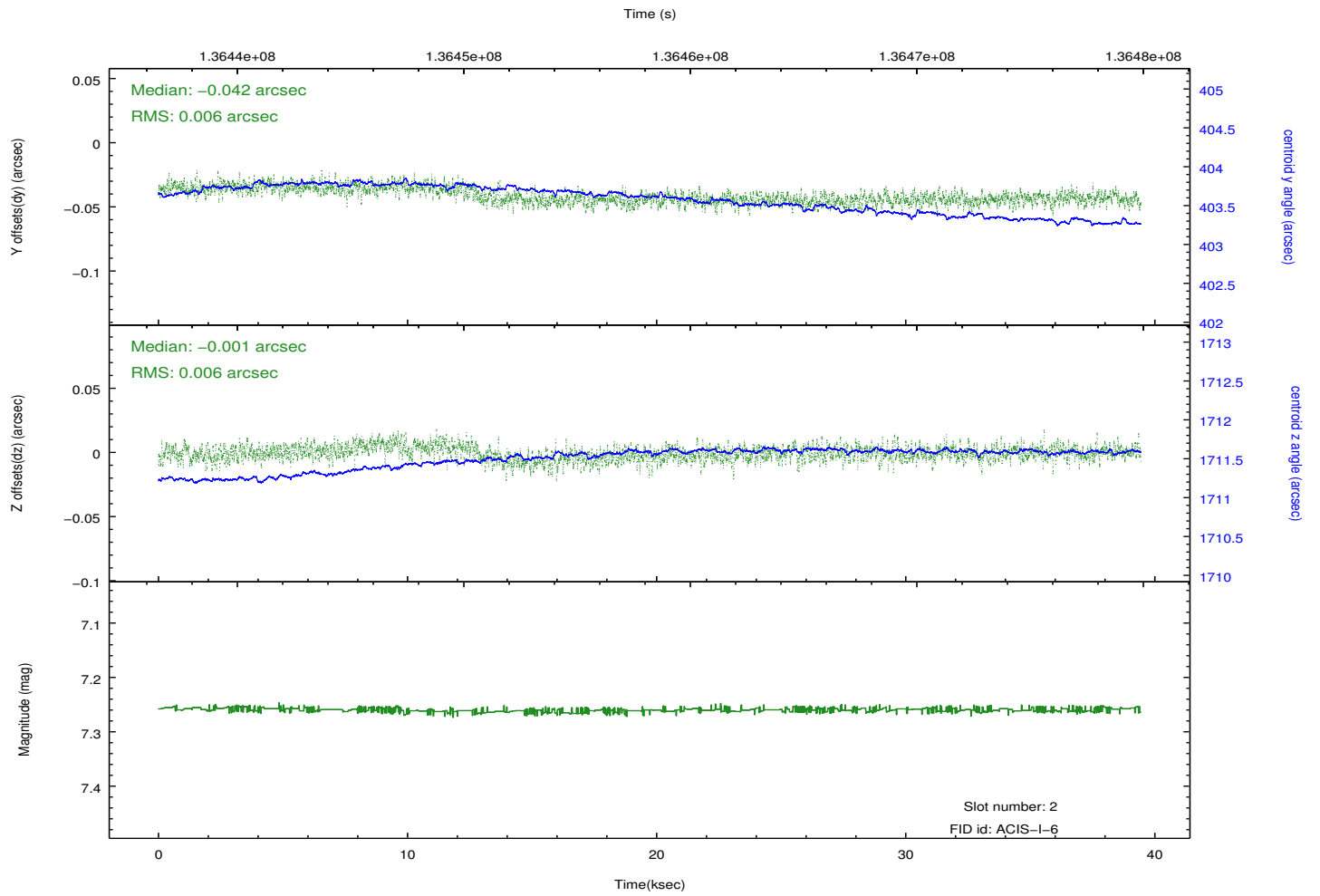
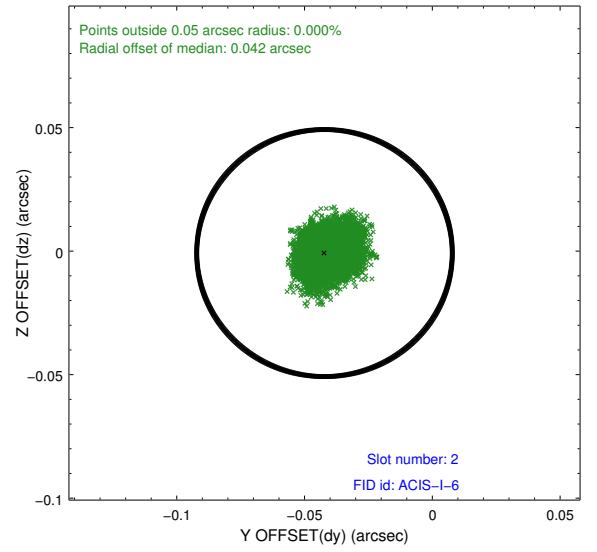
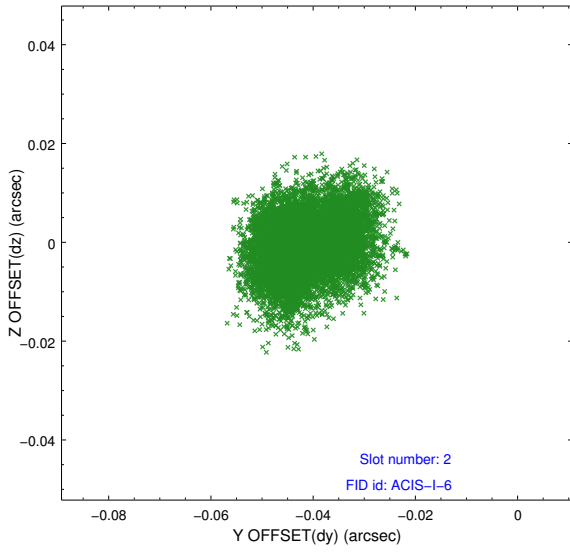
2.5.1 Slot 0



2.5.2 Slot 1



2.5.3 Slot 2



A Summary

A.1 Status

V&V Scientist	Beth Sundheim
V&V Date (YYYY-MM-DD)	2012.10.12
V&V Edition	1
V&V Disposition and Status	OK
V&V Charge Time	38.959

A.2 Comments