

# V&V Reference Report

## L2 ASCDS Version : 8.4.5

Observation 3355 - L2 Version 3  
Chandra X-Ray Center

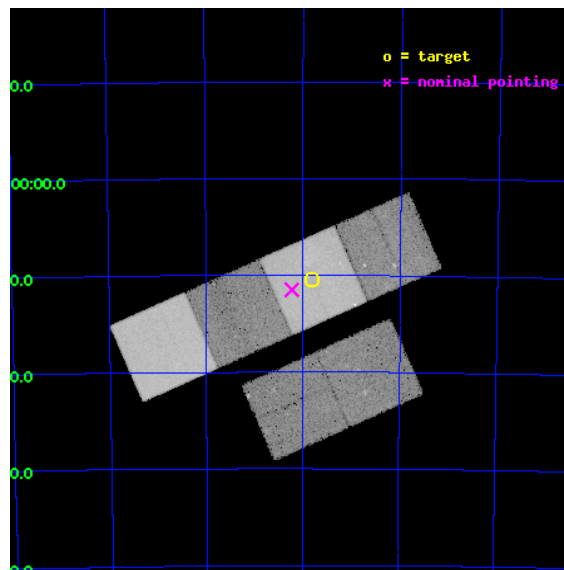
L2 Processing Date : Oct 20 2012

## Contents

<b>1</b>	<b>Front</b>	<b>2</b>
<b>2</b>	<b>OBI</b>	<b>3</b>
2.1	OBI . . . . .	3
2.1.1	Images . . . . .	3
2.1.2	Bias . . . . .	3
2.1.3	Parameters . . . . .	4
2.1.4	Events . . . . .	4
2.2	Compared Parameters . . . . .	5
2.3	Aspect . . . . .	6
2.4	Star Slots . . . . .	9
2.4.1	Slot 3 . . . . .	9
2.4.2	Slot 4 . . . . .	10
2.4.3	Slot 5 . . . . .	11
2.4.4	Slot 6 . . . . .	12
2.4.5	Slot 7 . . . . .	13
2.5	FID Slots . . . . .	14
2.5.1	Slot 0 . . . . .	14
2.5.2	Slot 1 . . . . .	15
2.5.3	Slot 2 . . . . .	16
<b>A</b>	<b>Summary</b>	<b>17</b>
A.1	Status . . . . .	17
A.2	Comments . . . . .	17

# 1 Front

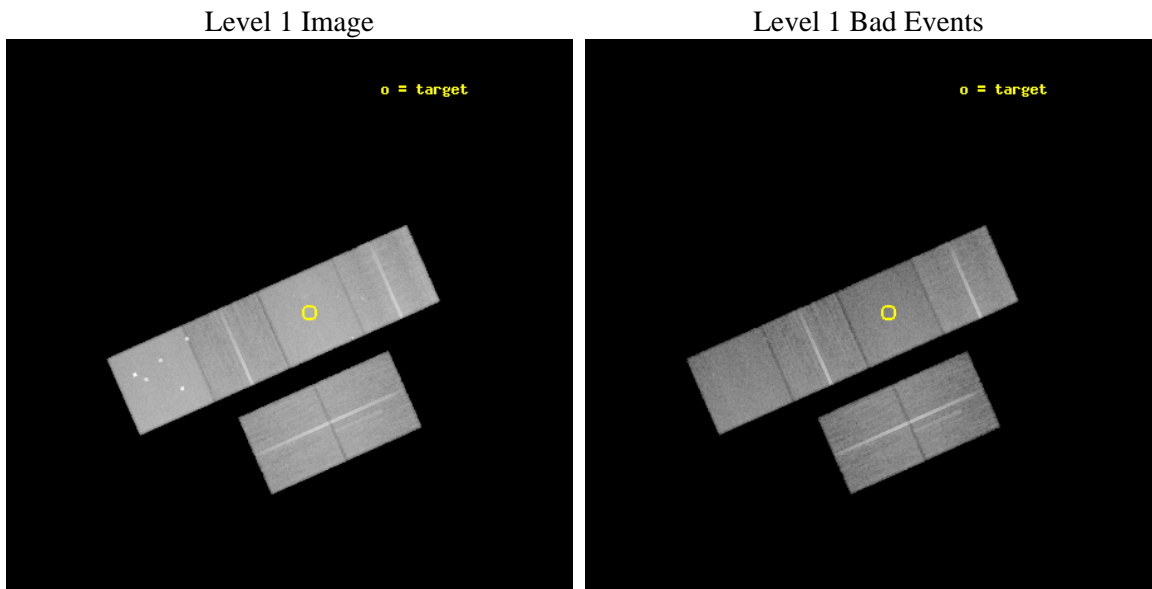
seq_num	900194	Sequence number
obs_id	3355	Observation id
title	X-RAY EMISSION MECHANISMS AND EVOLUTION OF SUPERBUBBLES	Proposal t
observer	DR. Sally Oey	Principal investigator
object	DEM L50	Source name
dtcycle	0	&#160
cycle	P	events from which exps? Prim/Second/Both
ra_targ	74.954167	Observer's specified target RA [deg]
dec_targ	-70.174444	Observer's specified target Dec [deg]
ra_nom	75.057215082863	Nominal RA [deg]
dec_nom	-70.191879126658	Nominal Dec [deg]
roll_nom	336.12815966086	Nominal Roll [deg]
revision	3	Processing version of data
ontime	37756.411482364	Sum of GTIs [s]
livetime	37278.317065993	Livetime [s]
ontime2	37753.211552083	Sum of GTIs [s]
ontime3	37756.288362354	Sum of GTIs [s]
ontime5	37756.370442361	Sum of GTIs [s]
ontime6	37756.329402357	Sum of GTIs [s]
ontime7	37756.411482364	Sum of GTIs [s]
ontime8	37749.765371948	Sum of GTIs [s]
l2events	393407	Number of level 2 events



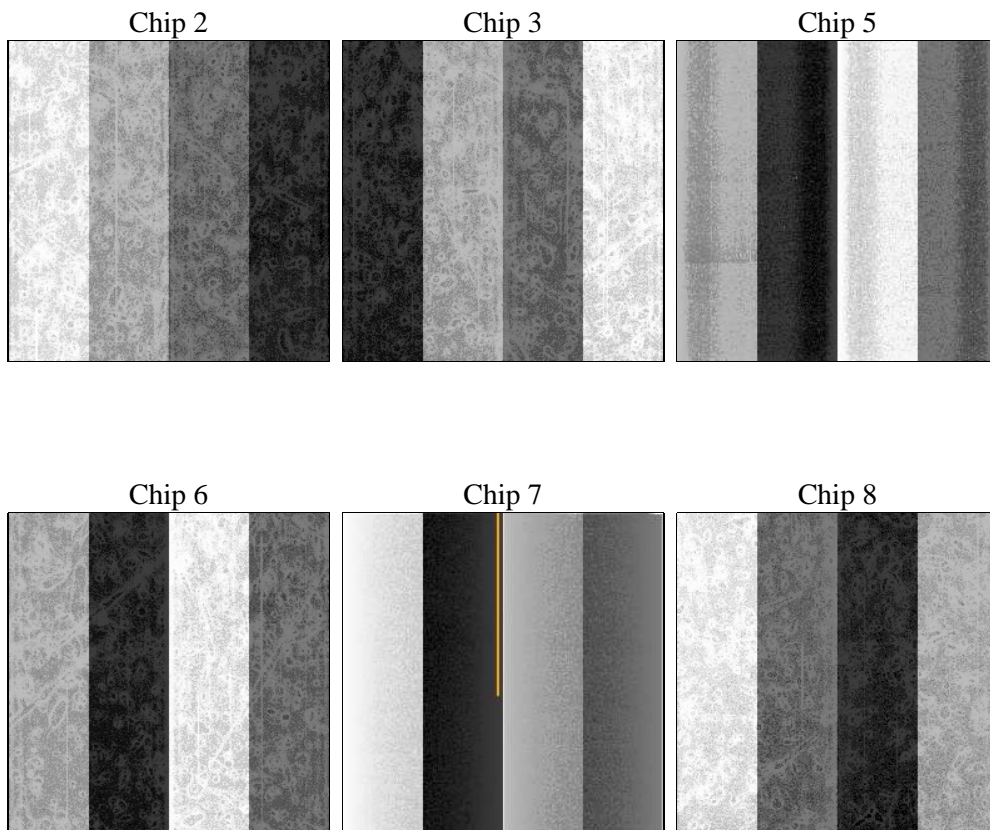
## 2 OBI

### 2.1 OBI

#### 2.1.1 Images



#### 2.1.2 Bias



### 2.1.3 Parameters

obi_num	1	Obi number	sched_exp_time	38000.000000	[s] Scheduled observation exposure time
ascdsver	8.4.5	Processing system revision	ontime	37756.411482364	Sum of GTIs [s]
caldbver	4.5.2	&#160	ontime2	37753.211552083	Sum of GTIs [s]
date	2012-10-20T17:06:16	Date and time of file creation	ontime3	37756.288362354	Sum of GTIs [s]
revision	3	Processing version of data	ontime5	37756.370442361	Sum of GTIs [s]
			ontime6	37756.329402357	Sum of GTIs [s]
			ontime7	37756.411482364	Sum of GTIs [s]
			ontime8	37749.765371948	Sum of GTIs [s]
			l1events	1721874	Number of level 1 events

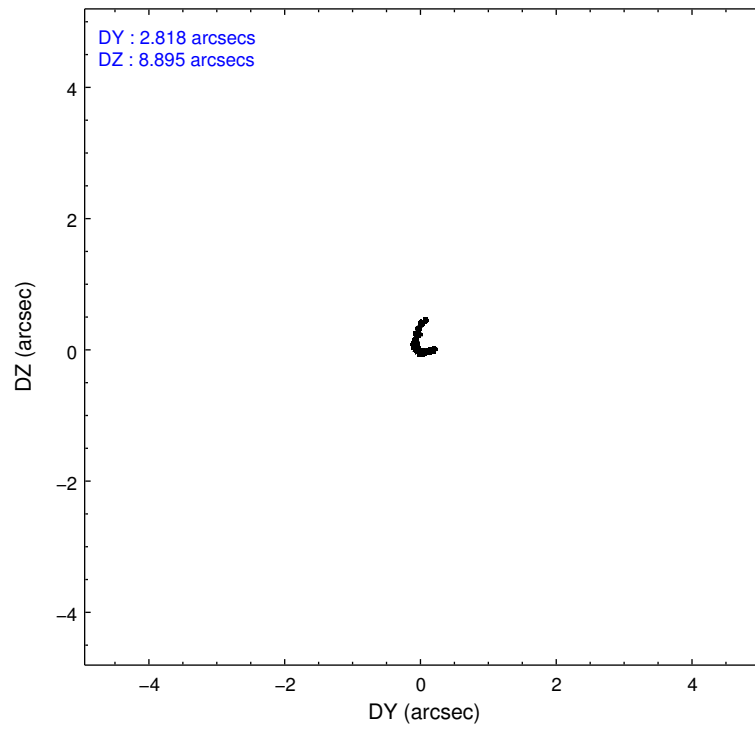
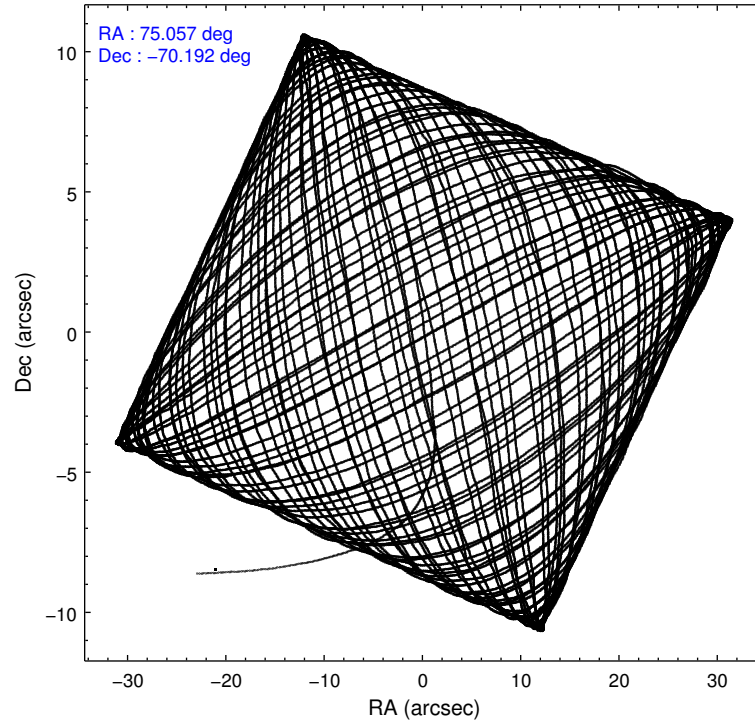
### 2.1.4 Events

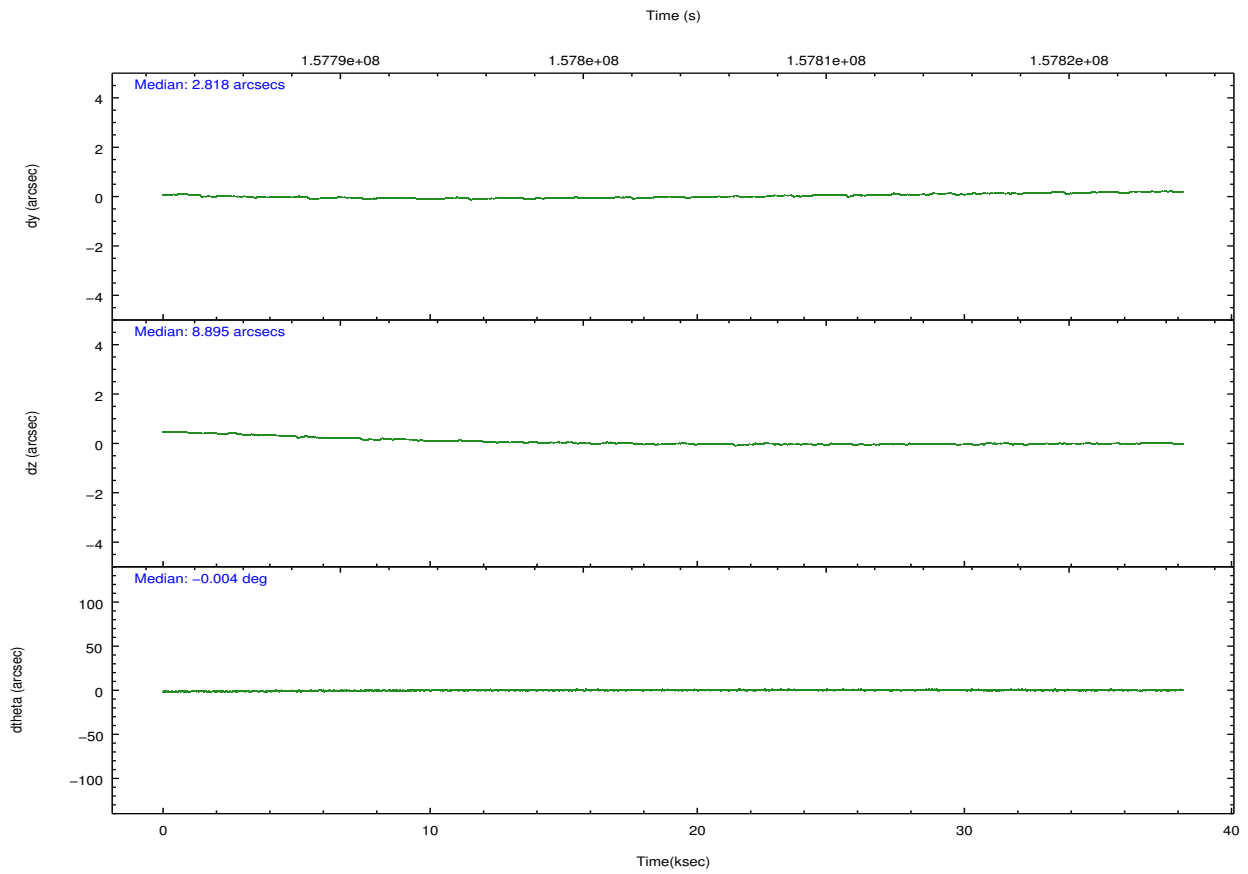
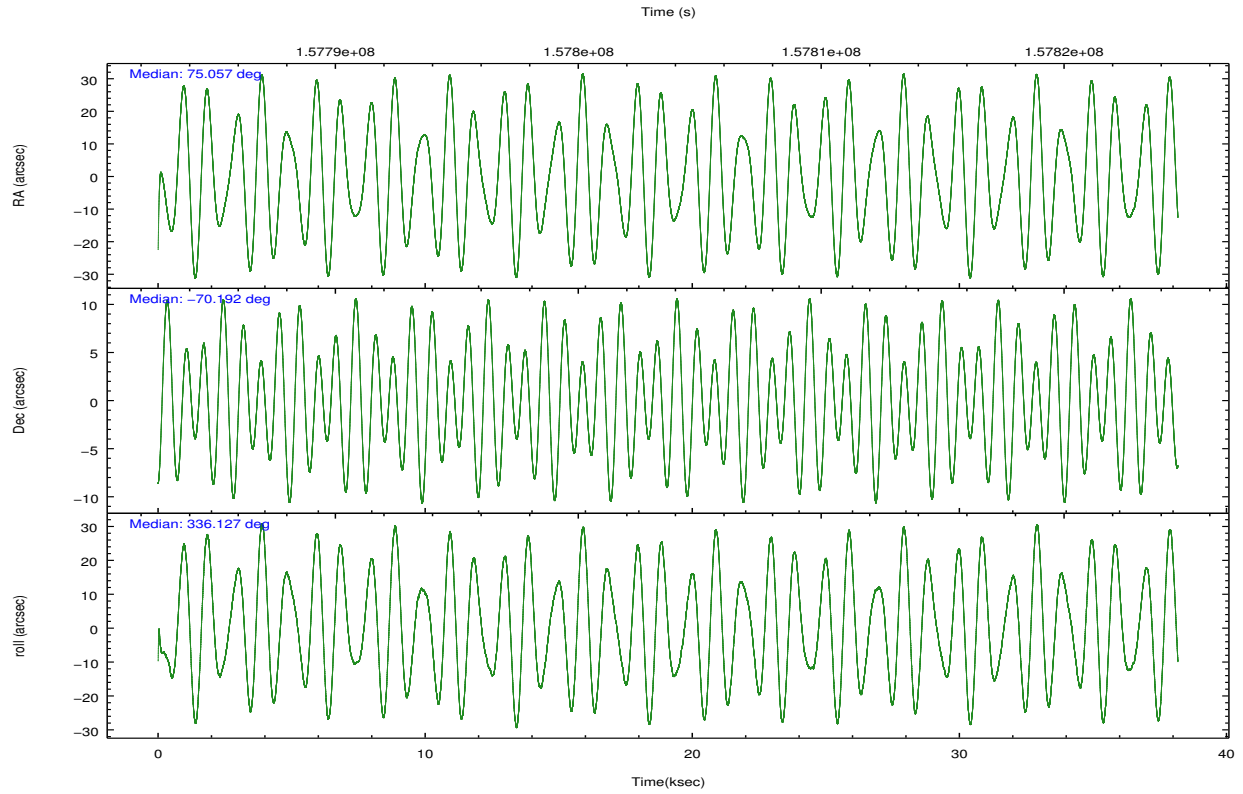
	ccd 2	ccd 3	ccd 5	ccd 6	ccd 7	ccd 8		ccd 2	ccd 3	ccd 5	ccd 6	ccd 7	ccd 8
level 1 events	245722	235445	367756	242012	327119	303820	grade 0 events	13219	12457	29344	12199	16360	20747
rejected events	216608	207603	190498	213037	185457	241288		5%	5%	7%	5%	5%	6%
rejected %	88%	88%	51%	88%	56%	79%	grade 1 events	145	121	535	122	297	201
								0%	0%	0%	0%	0%	0%
							grade 2 events	5705	5127	50962	5610	28516	13383
								2%	2%	13%	2%	8%	4%
							grade 3 events	2789	2809	6985	2917	13044	6632
								1%	1%	1%	1%	3%	2%
							grade 4 events	2622	2783	6774	2767	12814	6133
								1%	1%	1%	1%	3%	2%
							grade 5 events	9337	10208	27052	10830	30680	13869
								3%	4%	7%	4%	9%	4%
							grade 6 events	4784	4668	83211	5484	70941	15644
								1%	1%	22%	2%	21%	5%
							grade 7 events	207121	197272	162893	202083	154467	227211
								84%	83%	44%	83%	47%	74%

## 2.2 Compared Parameters

Parameter	Planned	Actual	Parameter	Planned	Actual
Instrument	ACIS	ACIS	Obspar format version number	7	7
Detector	ACIS-235678	ACIS-235678	Obspar file type	PREDICTED	ACTUAL
Grating	NONE	NONE	Obspar update status	NONE	UPDATED
Data mode	FAINT	FAINT	Number of optional ACIS chips dropped	0	0
Observation mode	POINTING	POINTING	On-chip summing requested	N	N
[deg] Pointing RA	74.977467	75.05721508286297	Subarray requested	NONE	NONE
[deg] Pointing Dec	-70.195131	-70.19187912665771	Alternating exposures requested	N	N
[deg] Pointing Roll	335.896499	336.1281596608569	[s] Primary exposure time	0.000000	3.2
[mm] SIM focus pos	-0.684267	-0.6828225247311905			
[mm] SIM defocus	0	0.001444936568705701			
[mm] SIM translation stage pos	-190.132523	-190.1400660498719			
[mm] SIM translation stage offset	0	0.00754346686406393			
[s] Observation start time (MET)	157784790.184000	157783943.53052			
Observation start date	2003-01-01T05:05:26	2003-01-01T04:52:23			
[s] Observation end time (MET)	157822790.184000	157823577.20717			
Observation end date	2003-01-01T15:38:46	2003-01-01T15:52:57			
Read mode	TIMED	TIMED			

## 2.3 Aspect



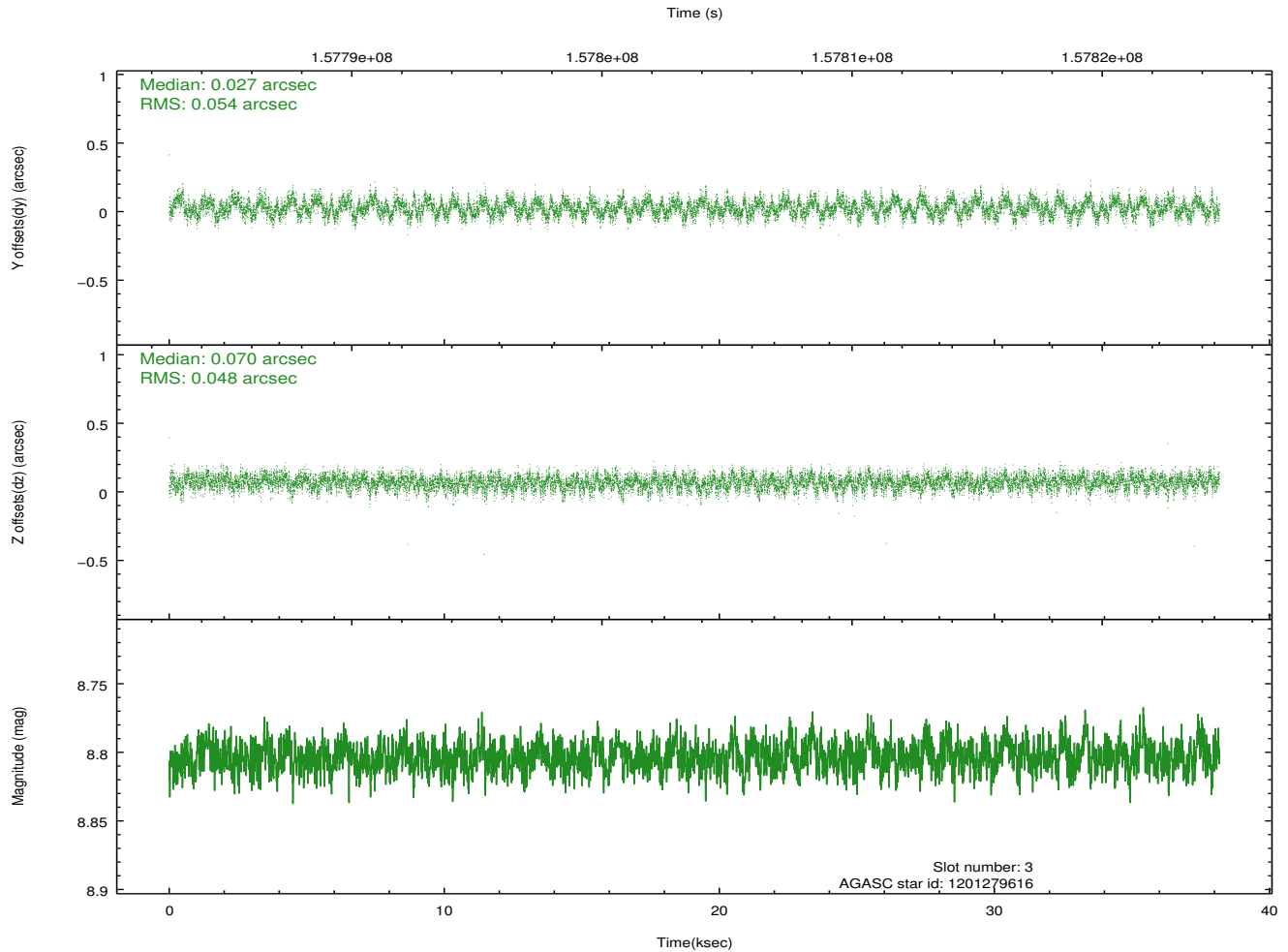
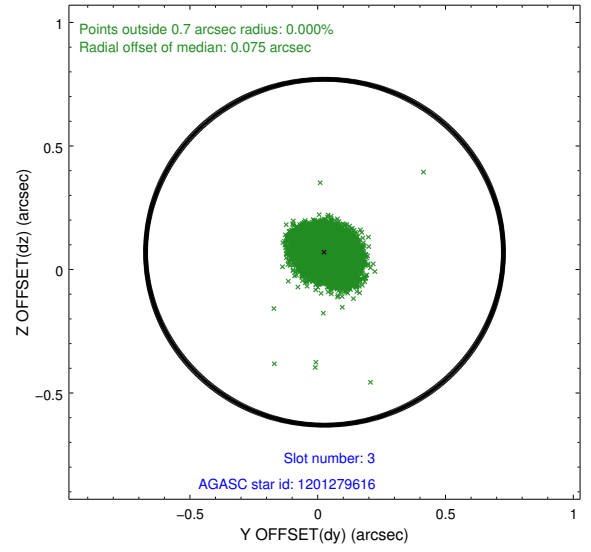
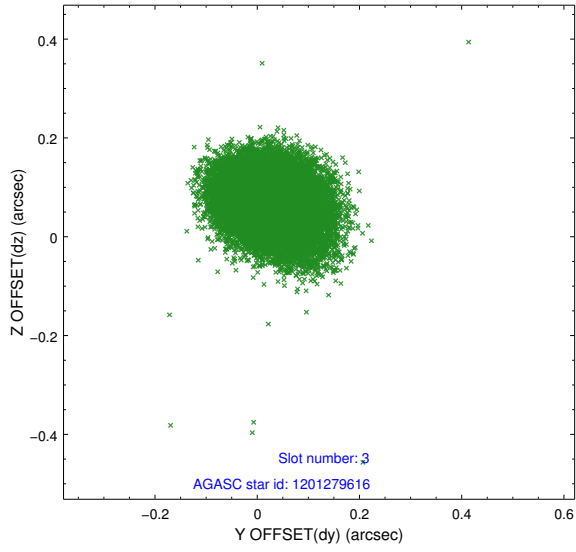


### Slot Statistics

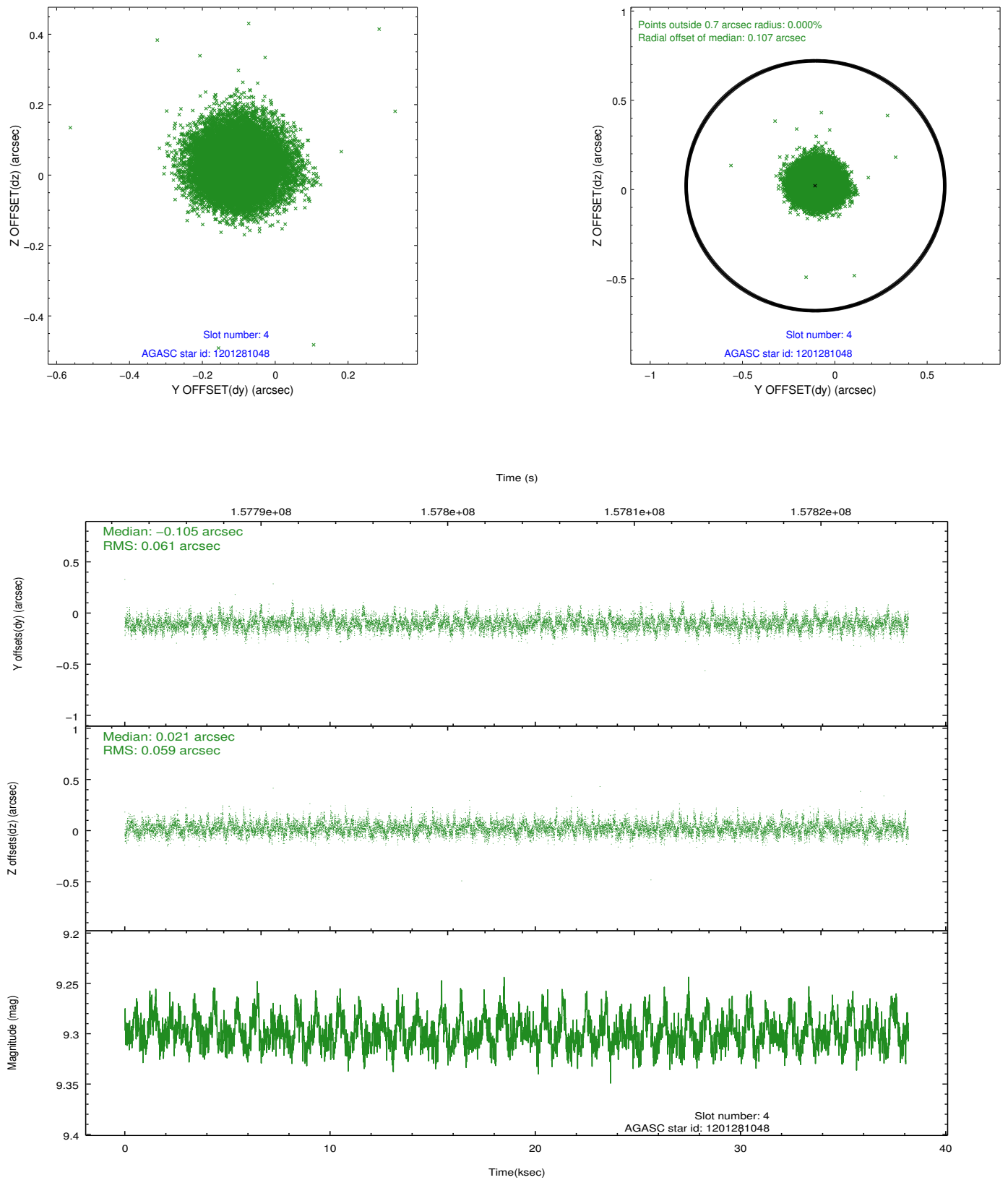
slot	status	id	mag	n_pts	med_dy	med_dz	dr1	dr2	ra	dec	mean_y	mean_z
0	FID	ACIS-S-2	7.11	9311	-0.026	-0.010	0.007	0.012	0.000000	0.000000	-755.50	-1730.20
1	FID	ACIS-S-4	7.20	9311	0.007	0.015	0.006	0.012	0.000000	0.000000	2157.79	178.30
2	FID	ACIS-S-5	7.24	9312	-0.012	0.003	0.008	0.013	0.000000	0.000000	-1808.30	171.97
3	GUIDE	1201279616	8.80	18617	0.027	0.070	0.077	0.123	74.529880	-70.149234	-565.65	-74.14
4	GUIDE	1201281048	9.30	18609	-0.105	0.021	0.090	0.147	76.036344	-70.680228	1869.13	-1088.82
5	GUIDE	1201281896	9.60	18617	0.090	-0.001	0.096	0.163	73.040481	-70.065308	-2344.64	-578.50
6	GUIDE	1201279608	9.66	18611	0.132	-0.081	0.119	0.190	73.872627	-70.293655	-1073.93	-882.43
7	GUIDE	1201281528	8.84	18621	-0.144	-0.012	0.081	0.132	76.504754	-70.682300	2385.84	-878.72

## 2.4 Star Slots

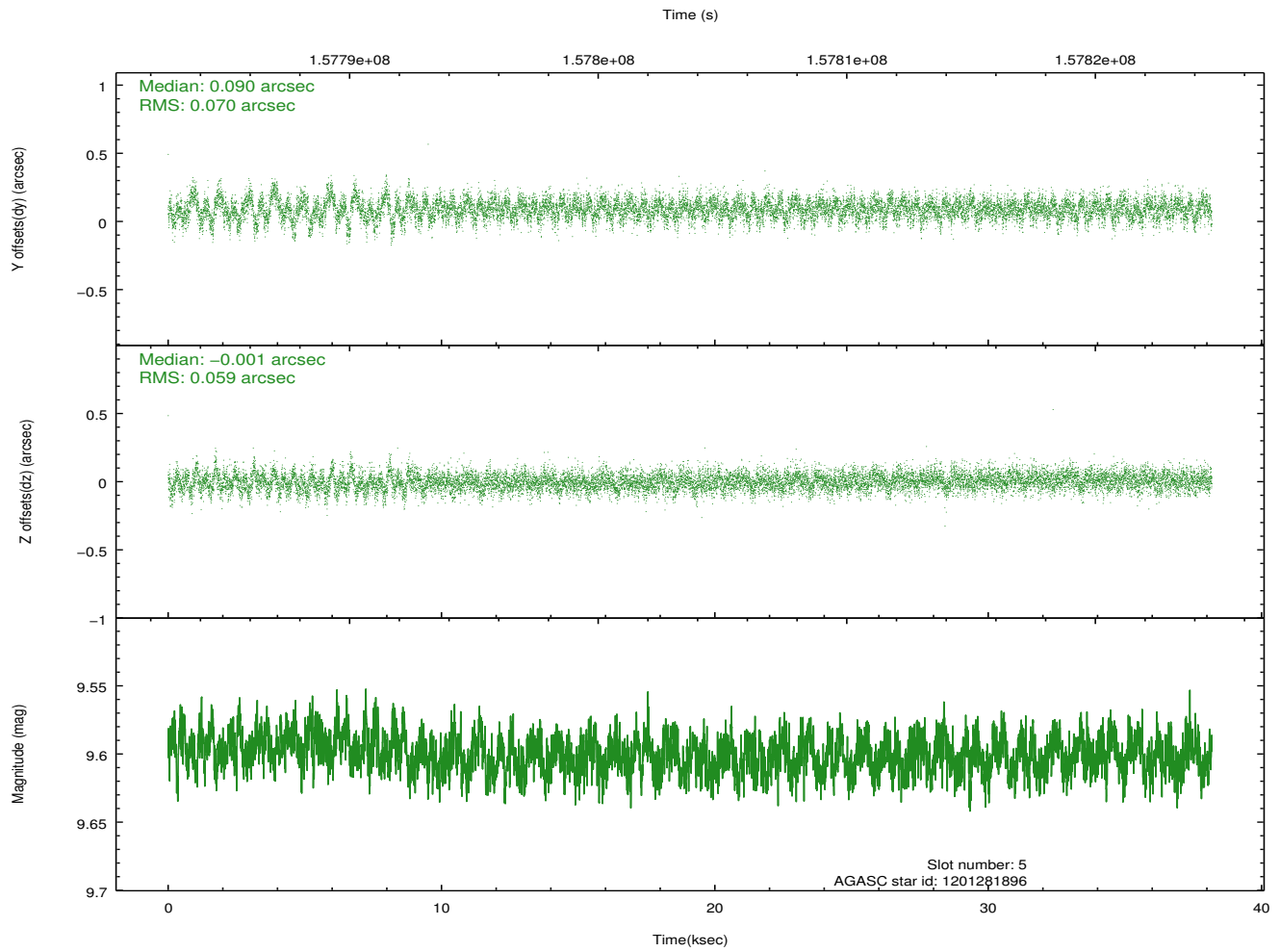
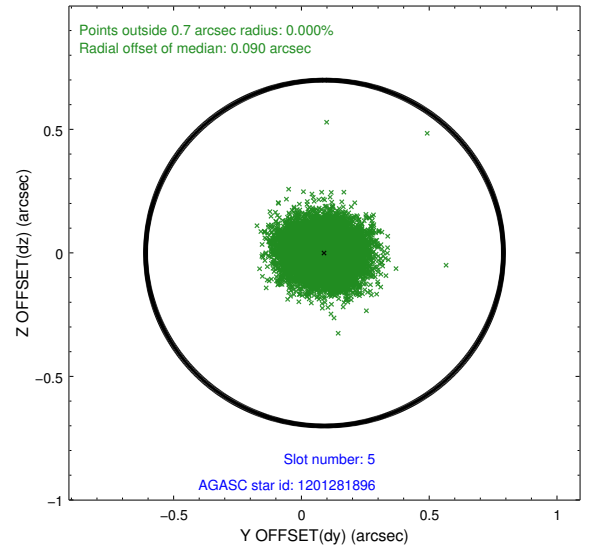
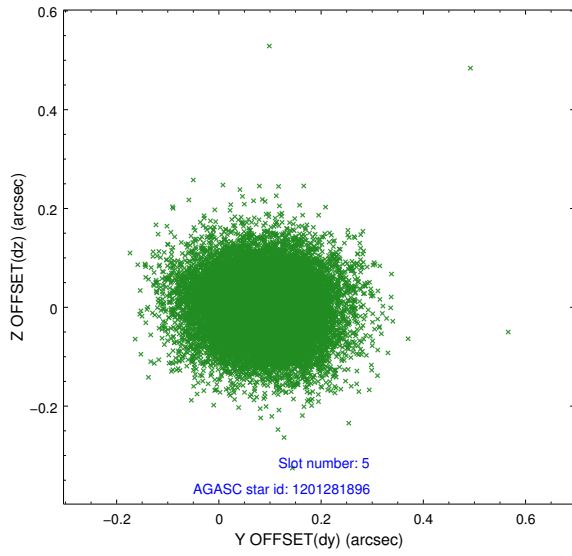
### 2.4.1 Slot 3



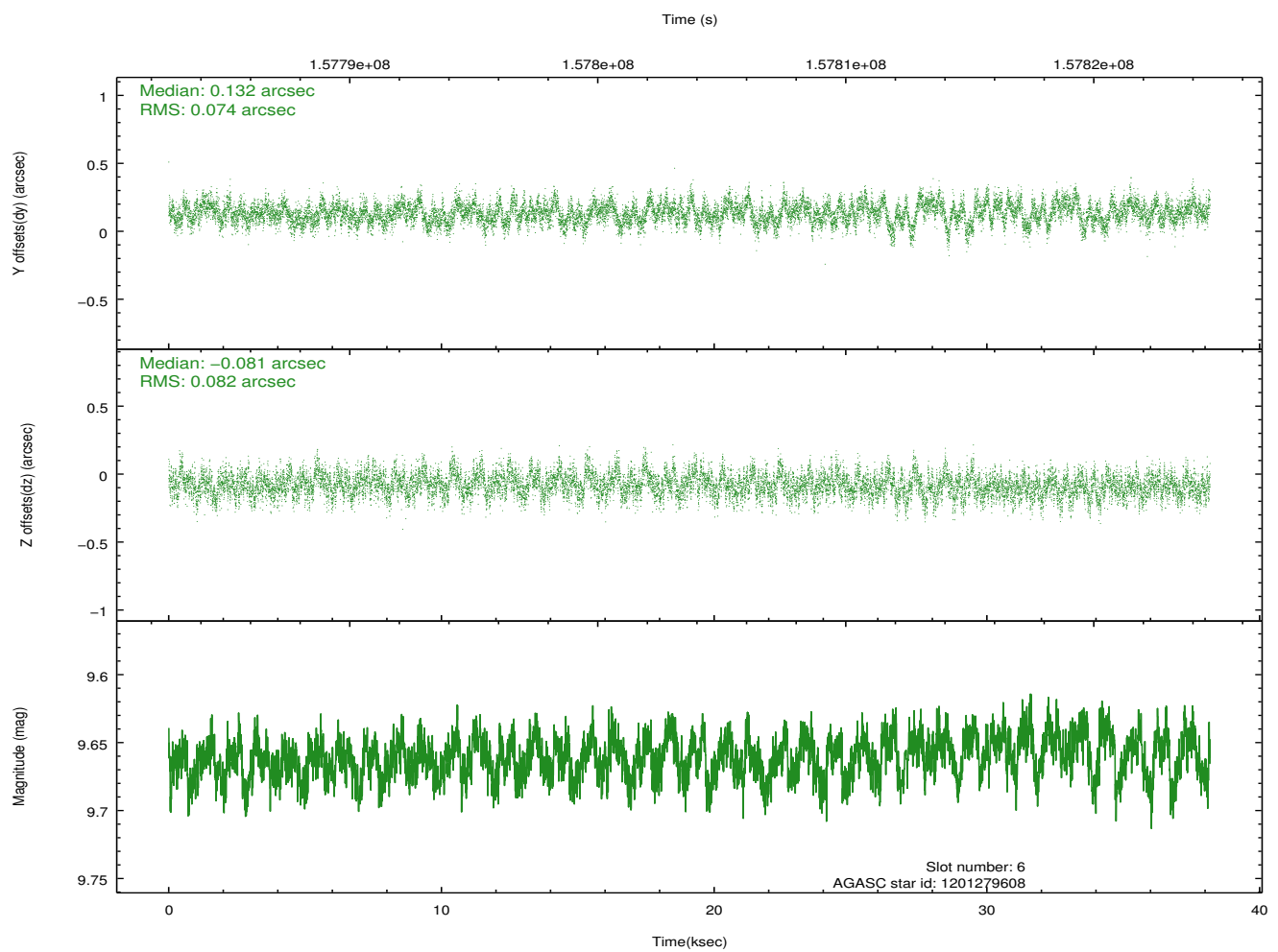
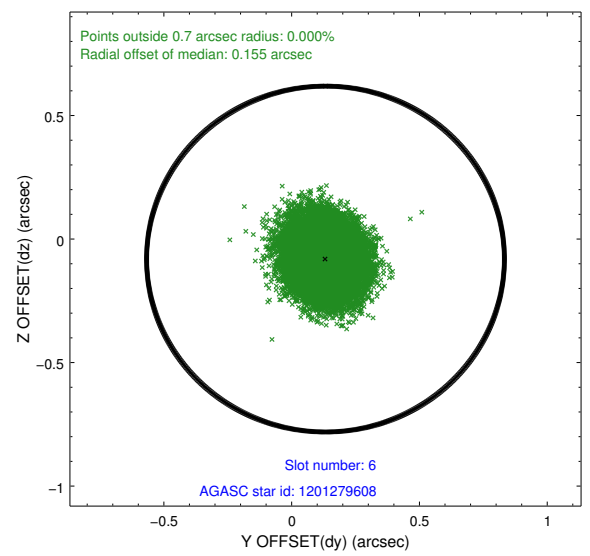
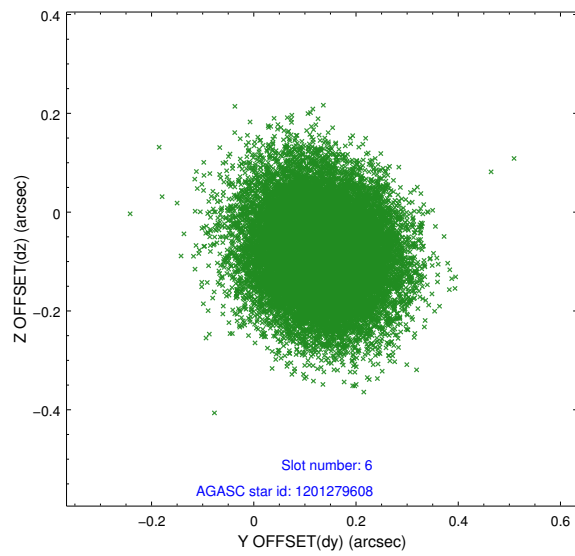
## 2.4.2 Slot 4



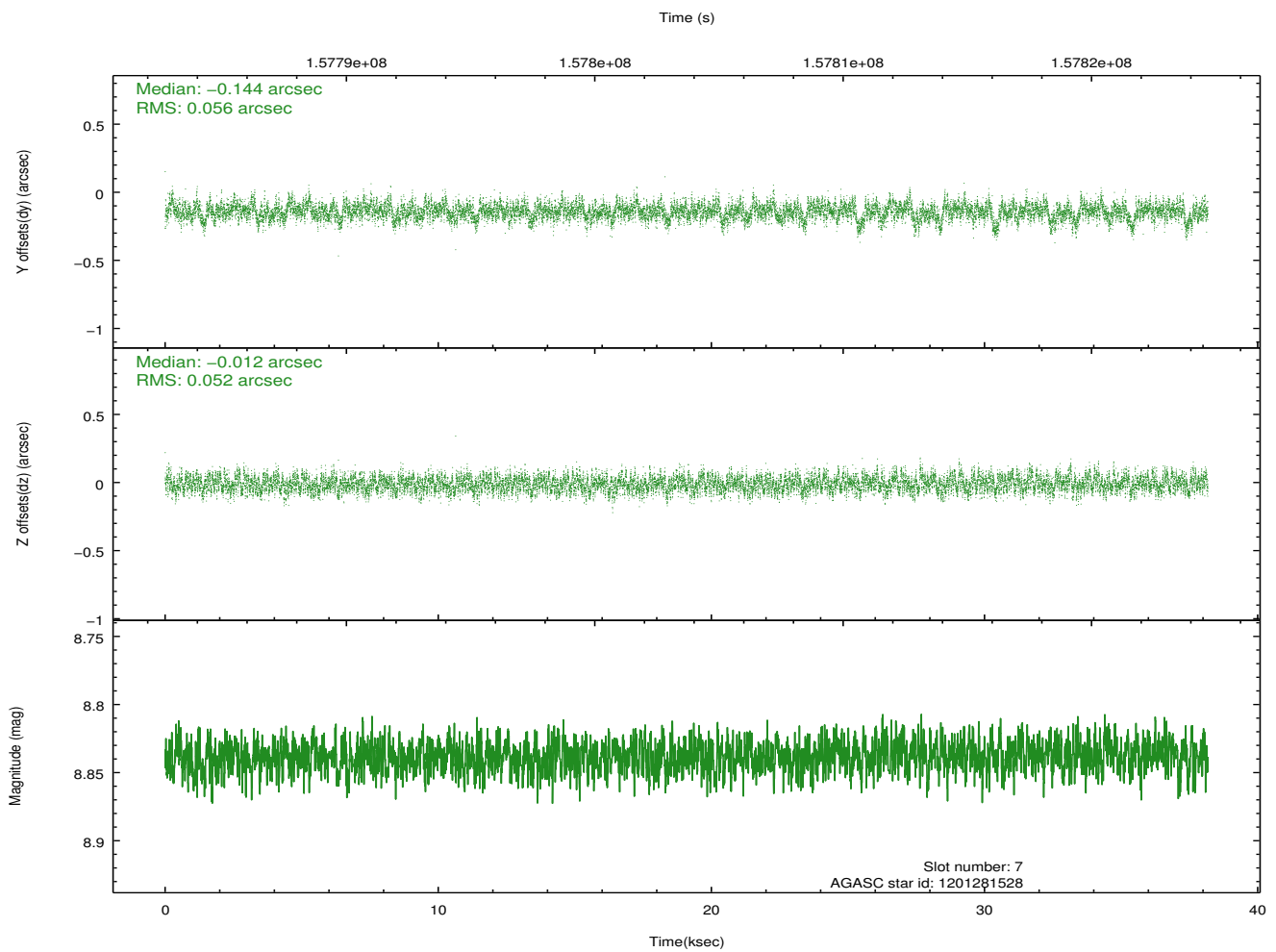
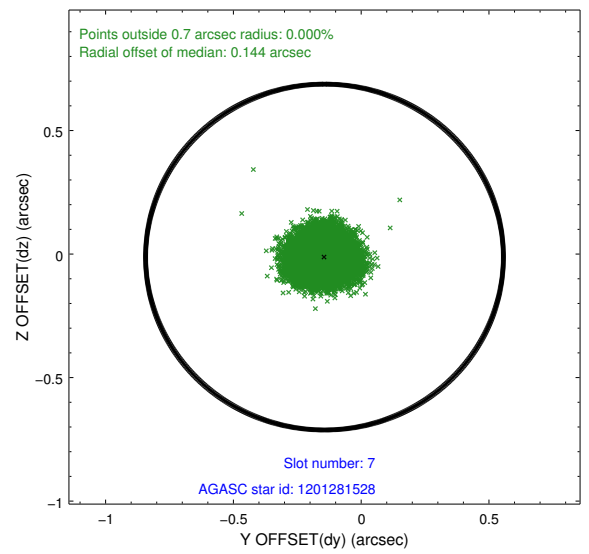
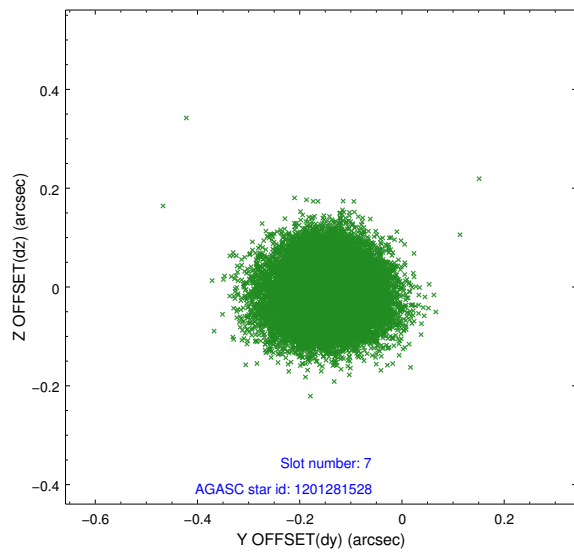
### 2.4.3 Slot 5



## 2.4.4 Slot 6

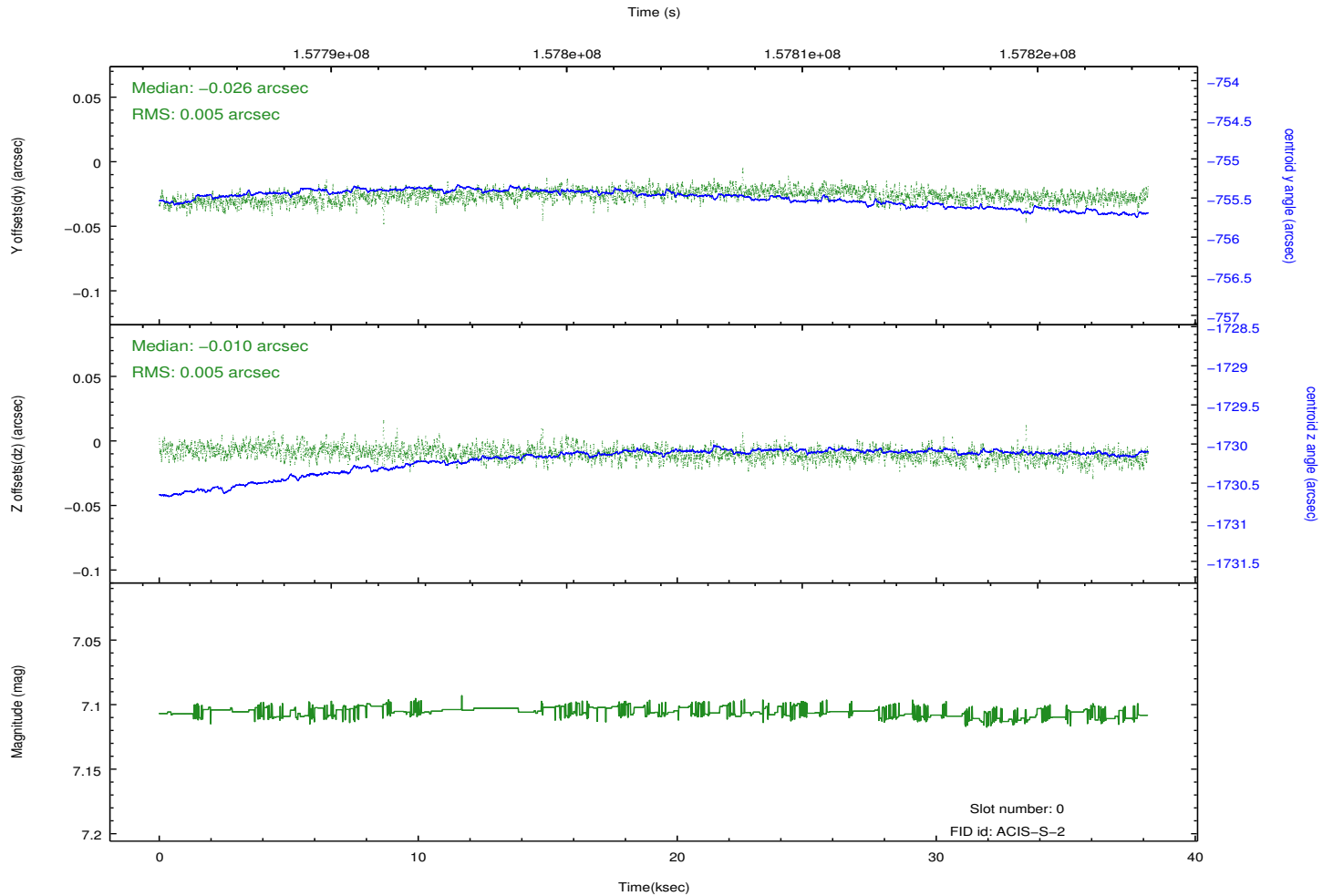
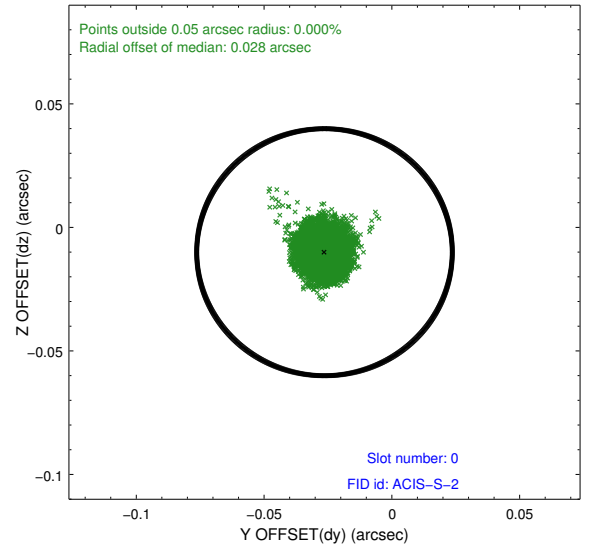
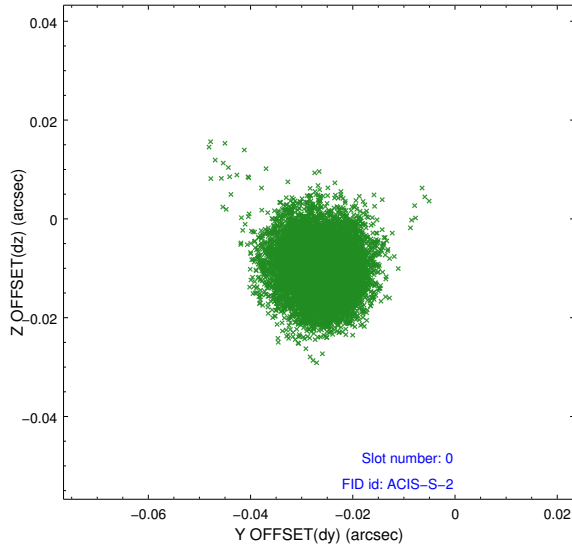


## 2.4.5 Slot 7

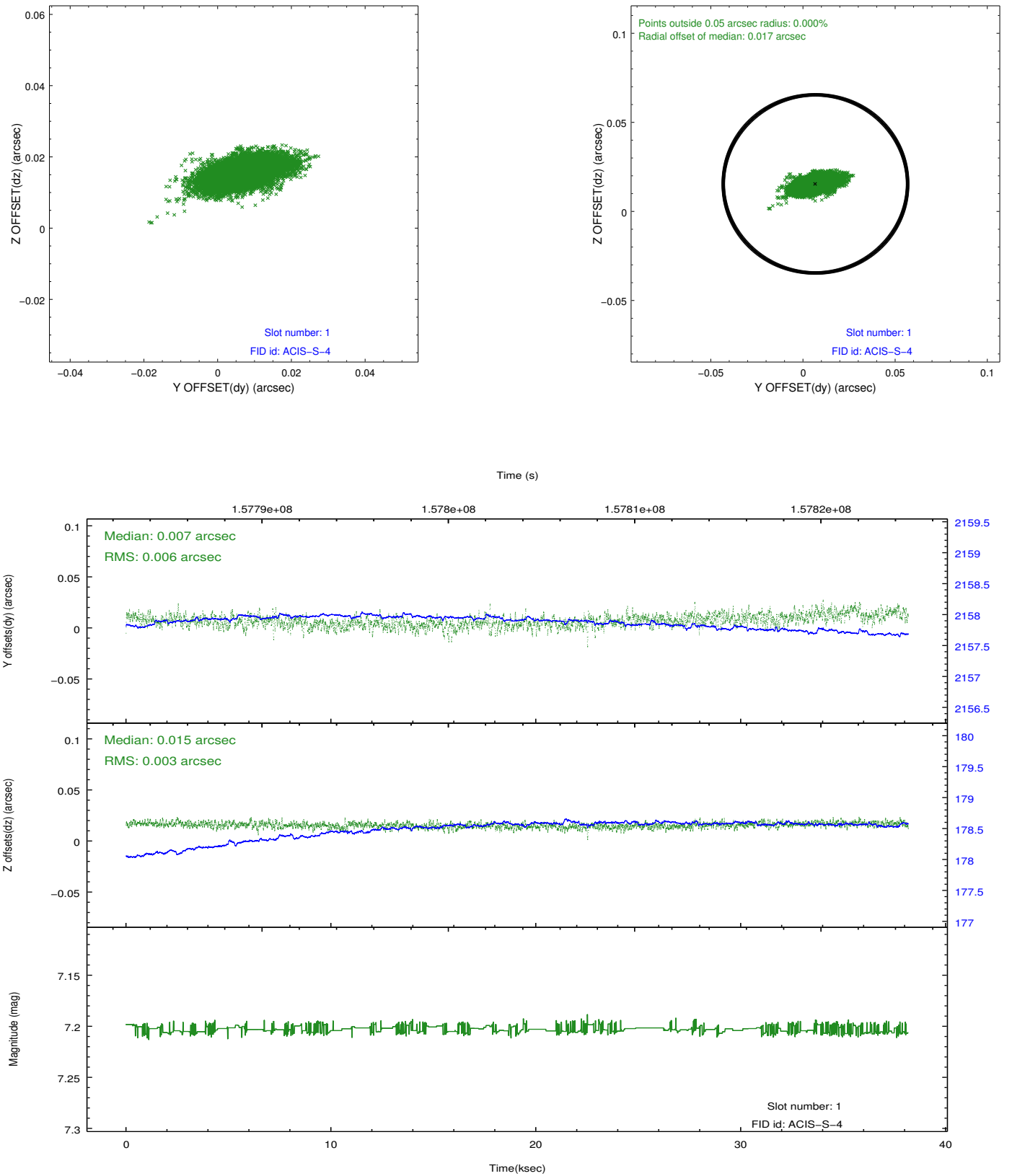


## 2.5 FID Slots

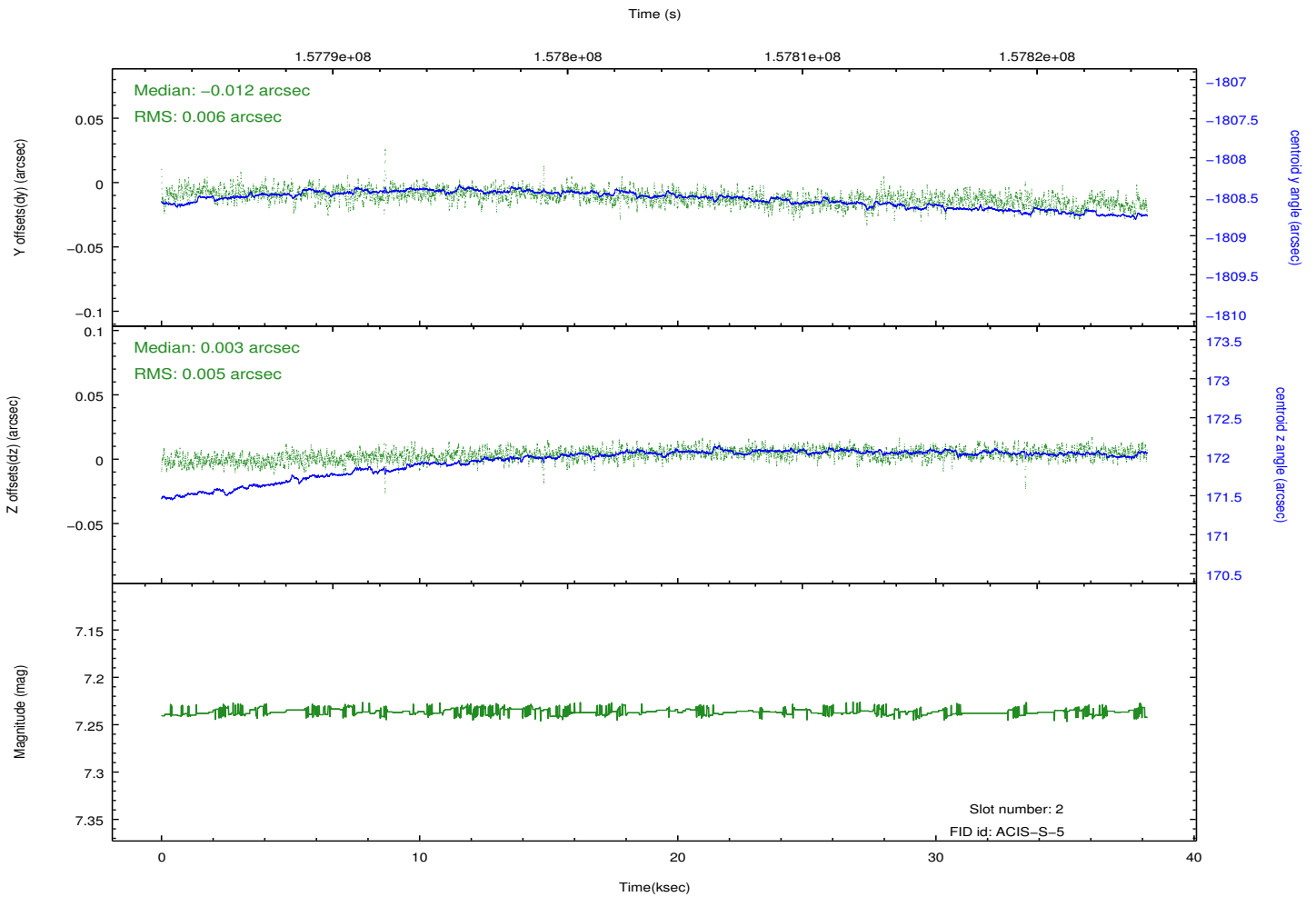
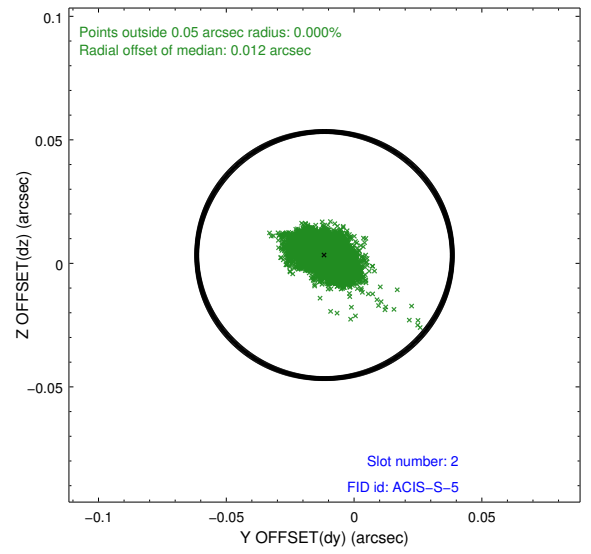
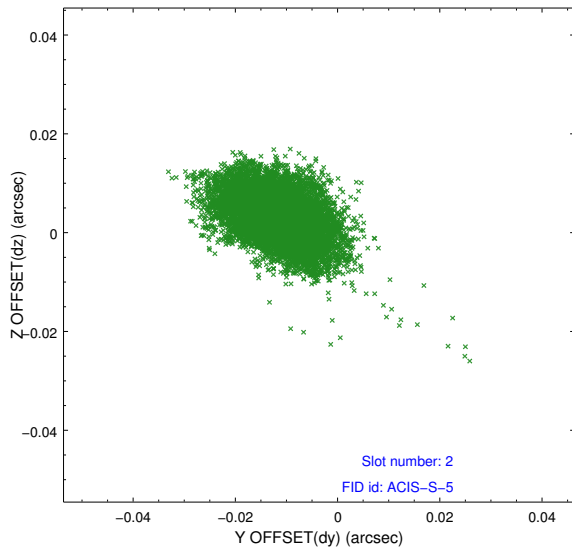
### 2.5.1 Slot 0



## 2.5.2 Slot 1



### 2.5.3 Slot 2



## **A Summary**

### **A.1 Status**

V&V Scientist	Jen Lauer
V&V Date (YYYY-MM-DD)	2012.11.01
V&V Edition	1
V&V Disposition and Status	OK
V&V Charge Time	37.756

### **A.2 Comments**