

V&V Reference Report

L2 ASCDS Version : 8.4.5

Observation 3395 - L2 Version 3
Chandra X-Ray Center

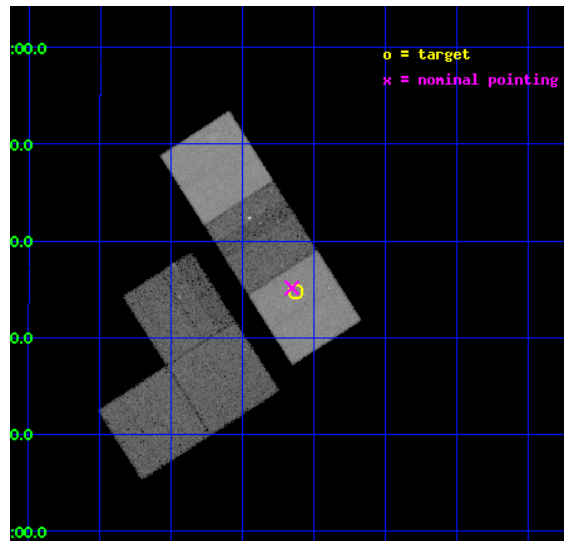
L2 Processing Date : Sep 27 2012

Contents

1	Front	2
2	OBI	3
2.1	OBI	3
2.1.1	Images	3
2.1.2	Bias	3
2.1.3	Parameters	4
2.1.4	Events	4
2.2	Compared Parameters	5
2.3	Aspect	6
2.4	Star Slots	9
2.4.1	Slot 3	9
2.4.2	Slot 4	10
2.4.3	Slot 5	11
2.4.4	Slot 6	12
2.4.5	Slot 7	13
2.5	FID Slots	14
2.5.1	Slot 0	14
2.5.2	Slot 1	15
2.5.3	Slot 2	16
A	Summary	17
A.1	Status	17
A.2	Comments	17

1 Front

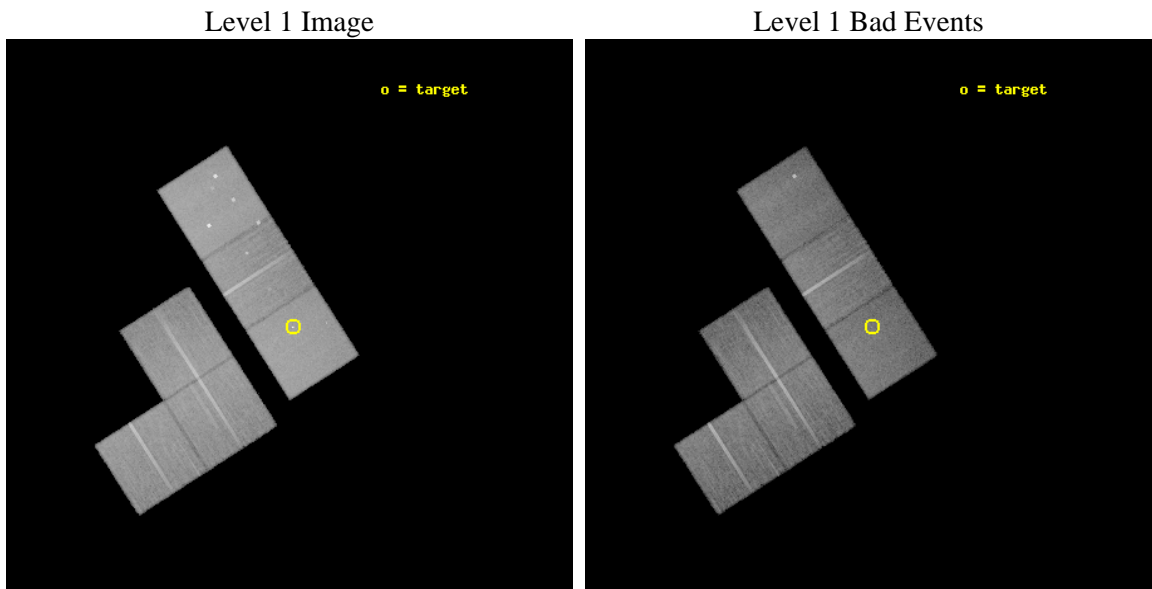
seq_num	700608	Sequence number
obs_id	3395	Observation id
title	CHANDRA MONITORING OF A MICROLENSING EVENT IN MG J0414+0534	Propos
observer	Dr. George Chartas	Principal investigator
object	MG J0414+0534	Source name
dtcycle	0	
cycle	P	events from which exps? Prim/Second/Both
ra_targ	63.657083	Observer's specified target RA [deg]
dec_targ	5.578889	Observer's specified target Dec [deg]
ra_nom	63.663715031258	Nominal RA [deg]
dec_nom	5.5860139309276	Nominal Dec [deg]
roll_nom	57.357828371721	Nominal Roll [deg]
revision	3	Processing version of data
ontime	28777.518066376	Sum of GTIs [s]
livetime	28413.119804879	Livetime [s]
ontime1	28777.518136114	Sum of GTIs [s]
ontime2	28777.518136114	Sum of GTIs [s]
ontime3	28777.518066376	Sum of GTIs [s]
ontime5	28780.759056538	Sum of GTIs [s]
ontime6	28777.518136114	Sum of GTIs [s]
ontime7	28777.518066376	Sum of GTIs [s]
l2events	321902	Number of level 2 events



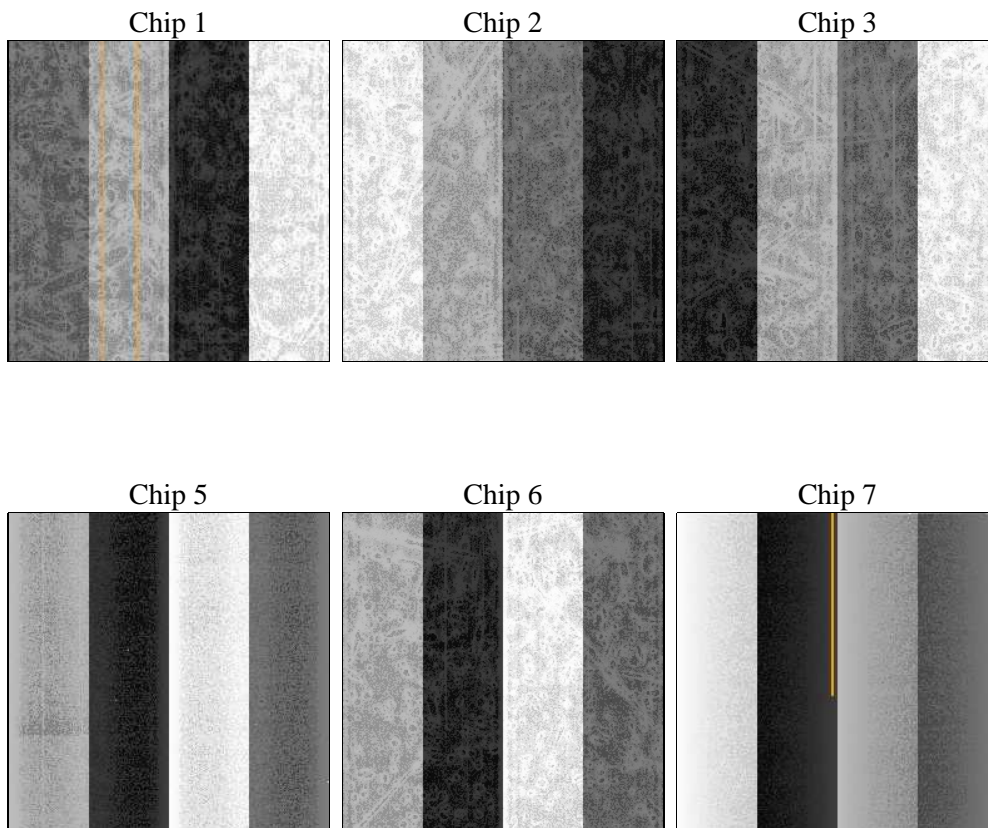
2 OBI

2.1 OBI

2.1.1 Images



2.1.2 Bias



2.1.3 Parameters

obi_num	4	Obi number	sched_exp_time	29000.000000	[s] Scheduled observation exposure time
ascdsver	8.4.5	Processing system revision	ontime	28777.518066376	Sum of GTIs [s]
caldbver	4.5.1.1	 	ontime1	28777.518136114	Sum of GTIs [s]
date	2012-09-27T01:32:53	Date and time of file creation	ontime2	28777.518136114	Sum of GTIs [s]
revision	3	Processing version of data	ontime3	28777.518066376	Sum of GTIs [s]
			ontime5	28780.759056538	Sum of GTIs [s]
			ontime6	28777.518136114	Sum of GTIs [s]
			ontime7	28777.518066376	Sum of GTIs [s]
			l1events	1307434	Number of level 1 events

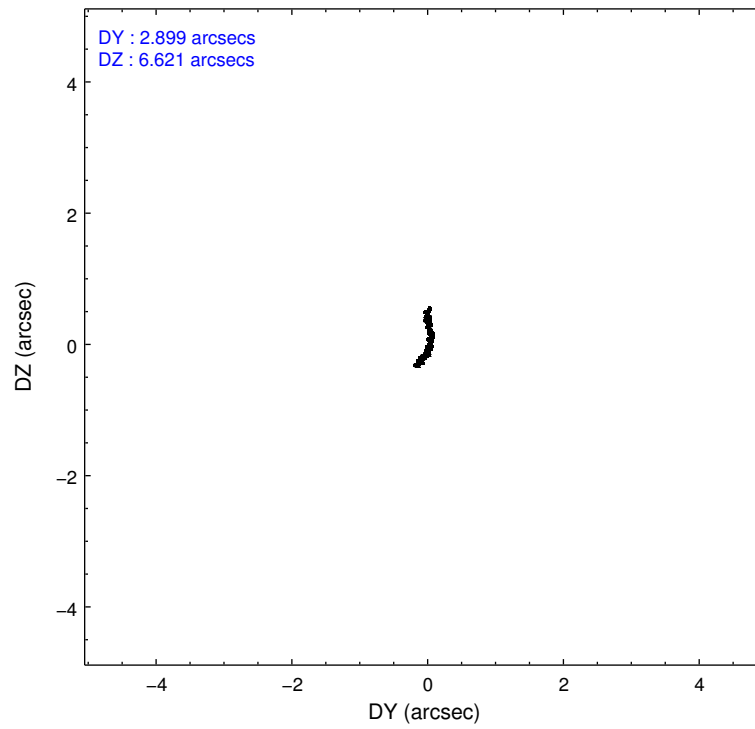
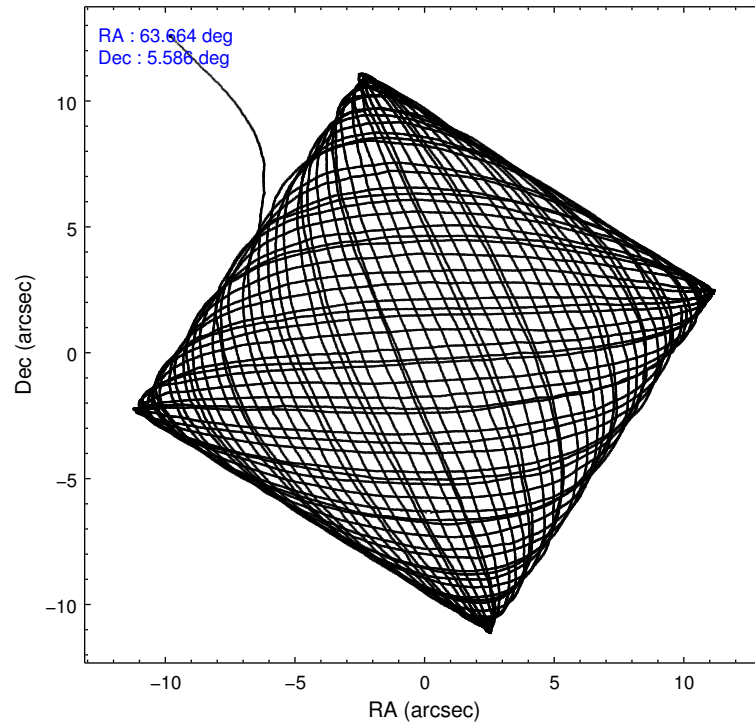
2.1.4 Events

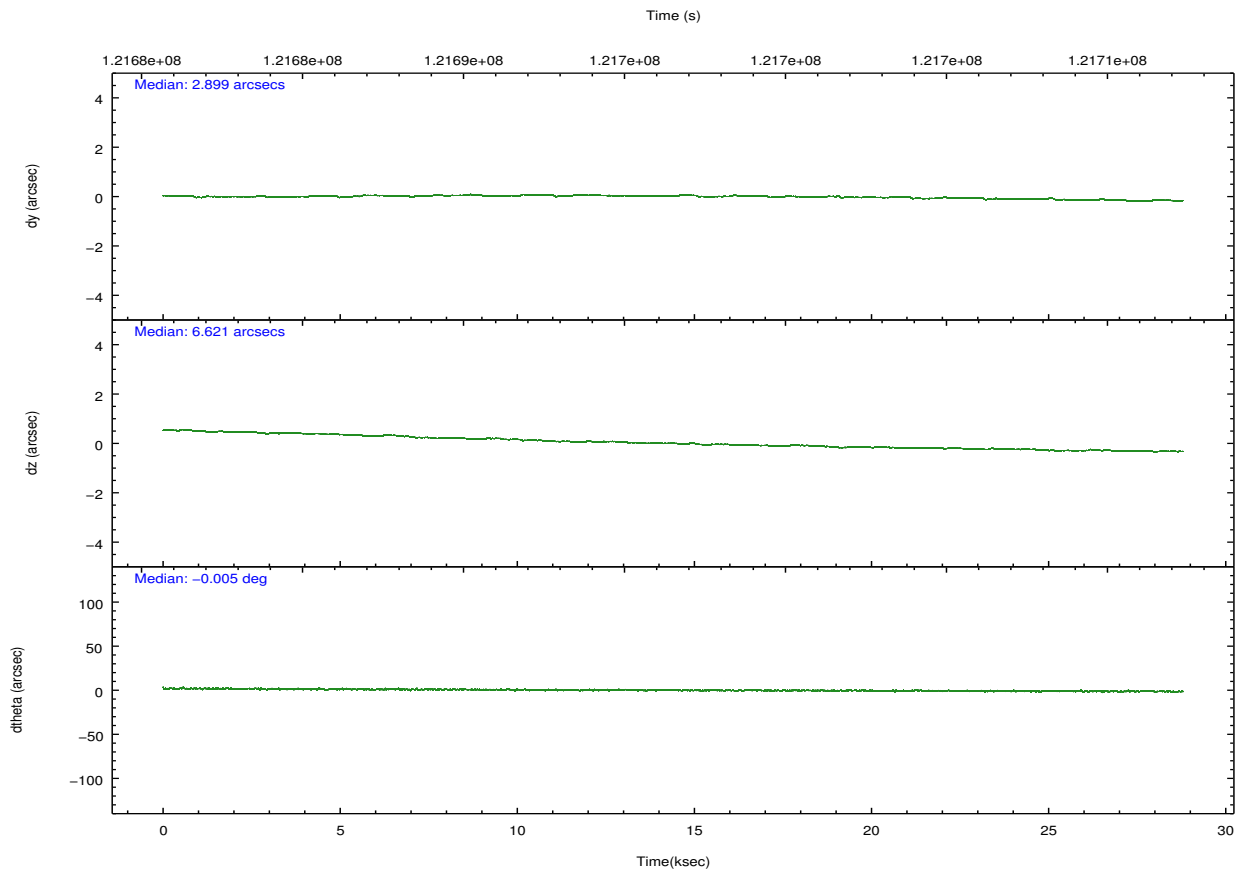
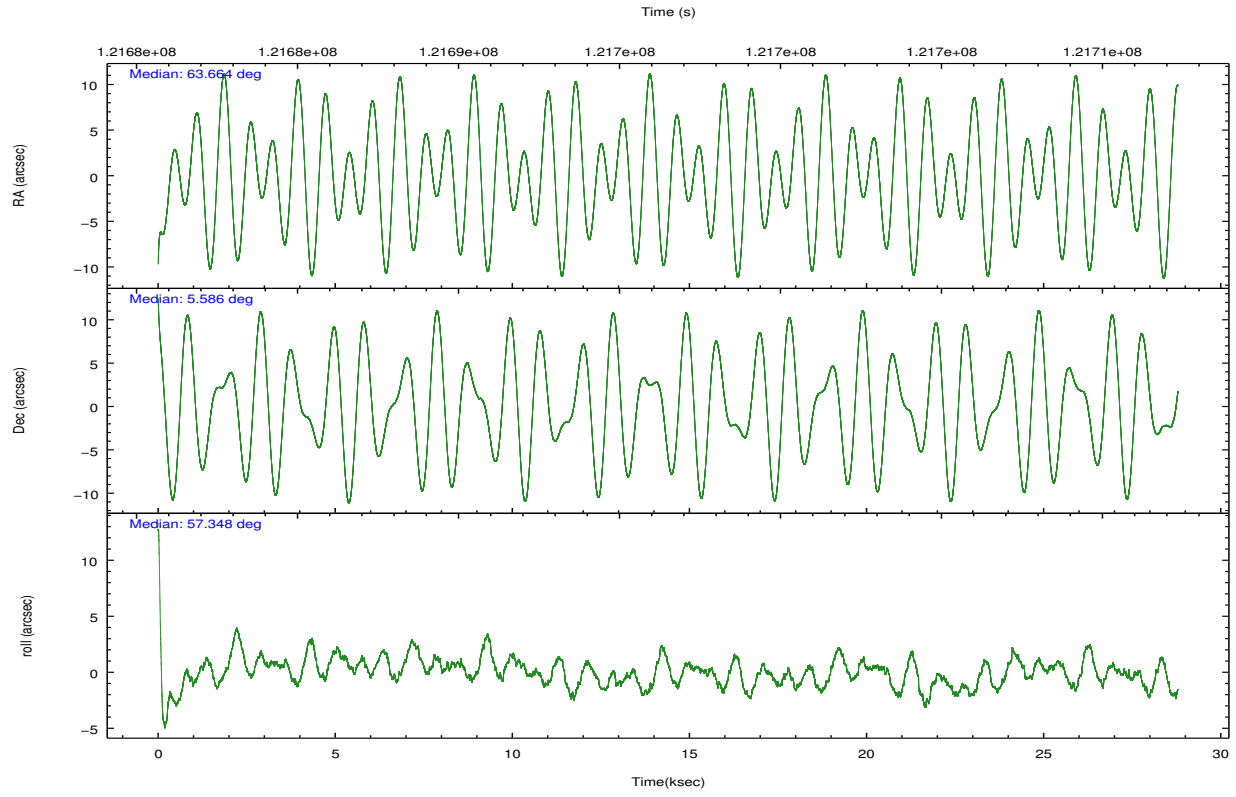
	ccd 1	ccd 2	ccd 3	ccd 5	ccd 6	ccd 7		ccd 1	ccd 2	ccd 3	ccd 5	ccd 6	ccd 7
level 1 events	191415	198685	195163	276781	202660	242730	grade 0 events	12164	12384	11891	18379	13239	10799
rejected events	160821	169728	166829	145445	171864	136368		6%	6%	6%	6%	6%	4%
rejected %	84%	85%	85%	52%	84%	56%	grade 1 events	95	94	90	371	115	257
								0%	0%	0%	0%	0%	0%
							grade 2 events	7708	7299	6979	37883	7555	21669
								4%	3%	3%	13%	3%	8%
							grade 3 events	2392	2049	2164	7198	2287	9765
								1%	1%	1%	2%	1%	4%
							grade 4 events	2351	2299	2100	5728	2224	9751
								1%	1%	1%	2%	1%	4%
							grade 5 events	7239	6199	6893	20638	7874	22766
								3%	3%	3%	7%	3%	9%
							grade 6 events	6173	5153	5376	63059	5720	55128
								3%	2%	2%	22%	2%	22%
							grade 7 events	153293	163208	159670	123525	163646	112595
								80%	82%	81%	44%	80%	46%

2.2 Compared Parameters

Parameter	Planned	Actual	Parameter	Planned	Actual
Instrument	ACIS	ACIS	Obspar format version number	7	7
Detector	ACIS-123567	ACIS-123567	Obspar file type	PREDICTED	ACTUAL
Grating	NONE	NONE	Obspar update status	NONE	UPDATED
Data mode	FAINT	FAINT	Number of optional ACIS chips dropped	0	0
Observation mode	POINTING	POINTING	On-chip summing requested	N	N
[deg] Pointing RA	63.662784	63.66371503125832	Subarray requested	NONE	NONE
[deg] Pointing Dec	5.558775	5.58601393092763	Alternating exposures requested	N	N
[deg] Pointing Roll	57.201291	57.35782837172059	[s] Primary exposure time	0.000000	3.2
[mm] SIM focus pos	-0.684267	-0.6828225247311905			
[mm] SIM defocus	0	0.001444936568705701			
[mm] SIM translation stage pos	-190.132523	-190.1400660498719			
[mm] SIM translation stage offset	0	0.00754346686406393			
[s] Observation start time (MET)	121682142.184000	121681108.12973			
Observation start date	2001-11-09T08:34:38	2001-11-09T08:18:28			
[s] Observation end time (MET)	121711142.184000	121712038.53096			
Observation end date	2001-11-09T16:37:58	2001-11-09T16:53:58			
Read mode	TIMED	TIMED			

2.3 Aspect



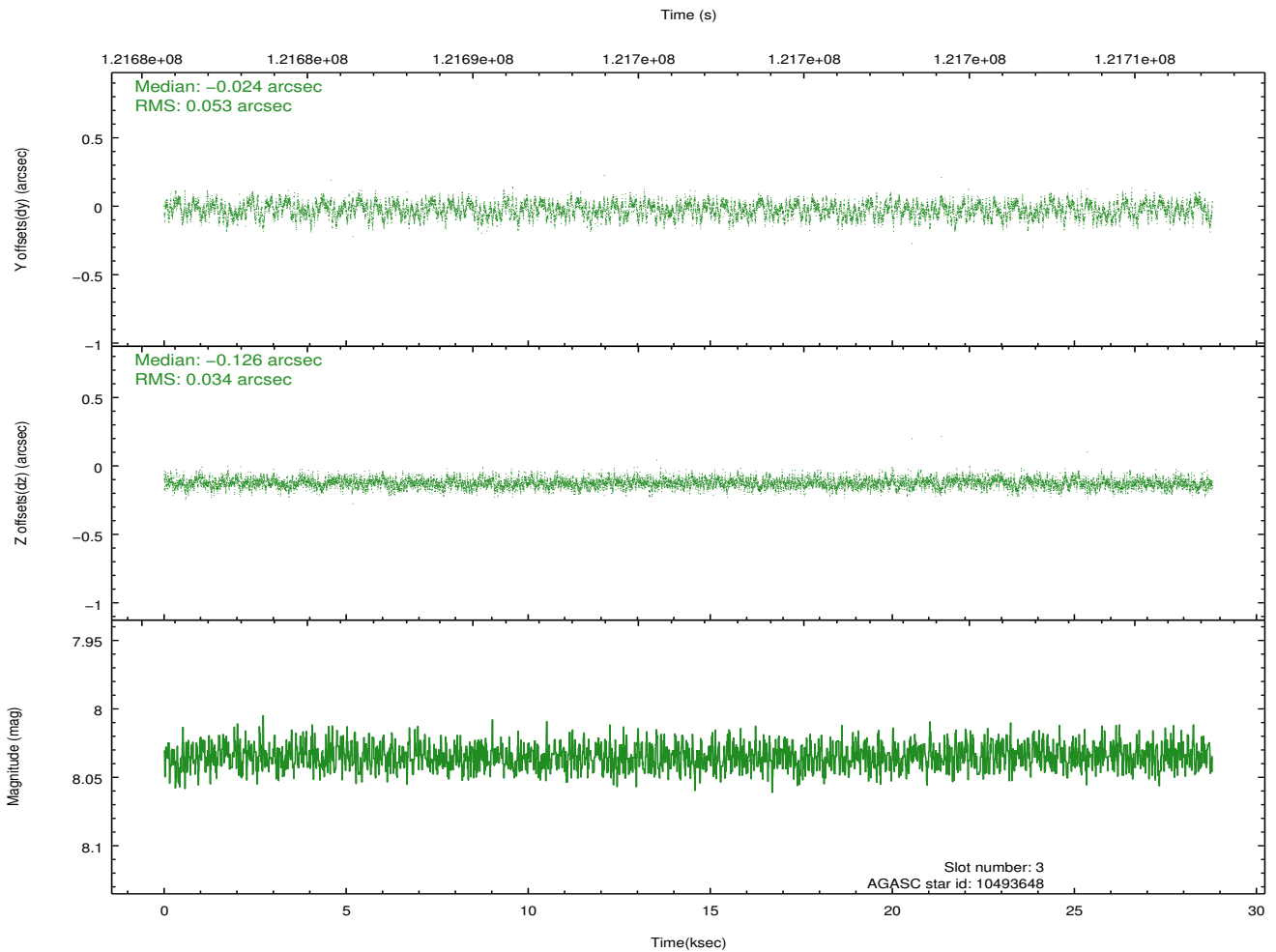
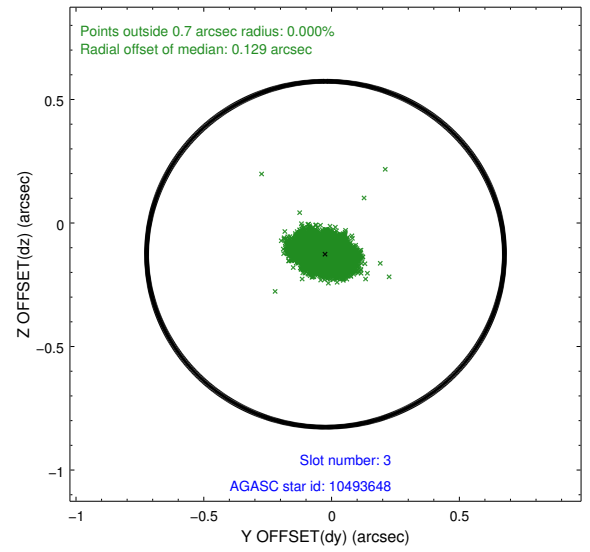
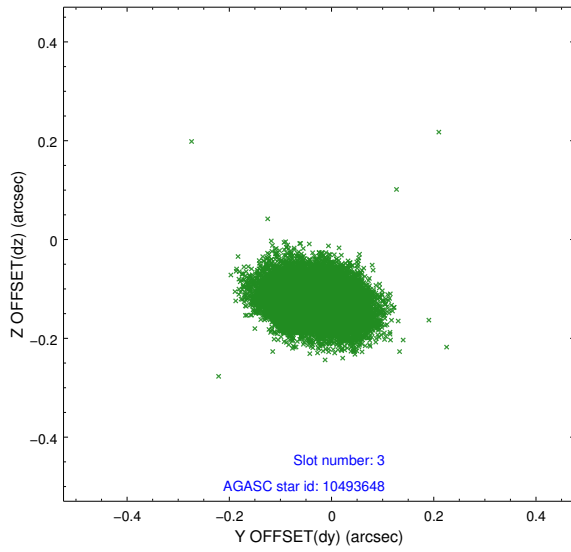


Slot Statistics

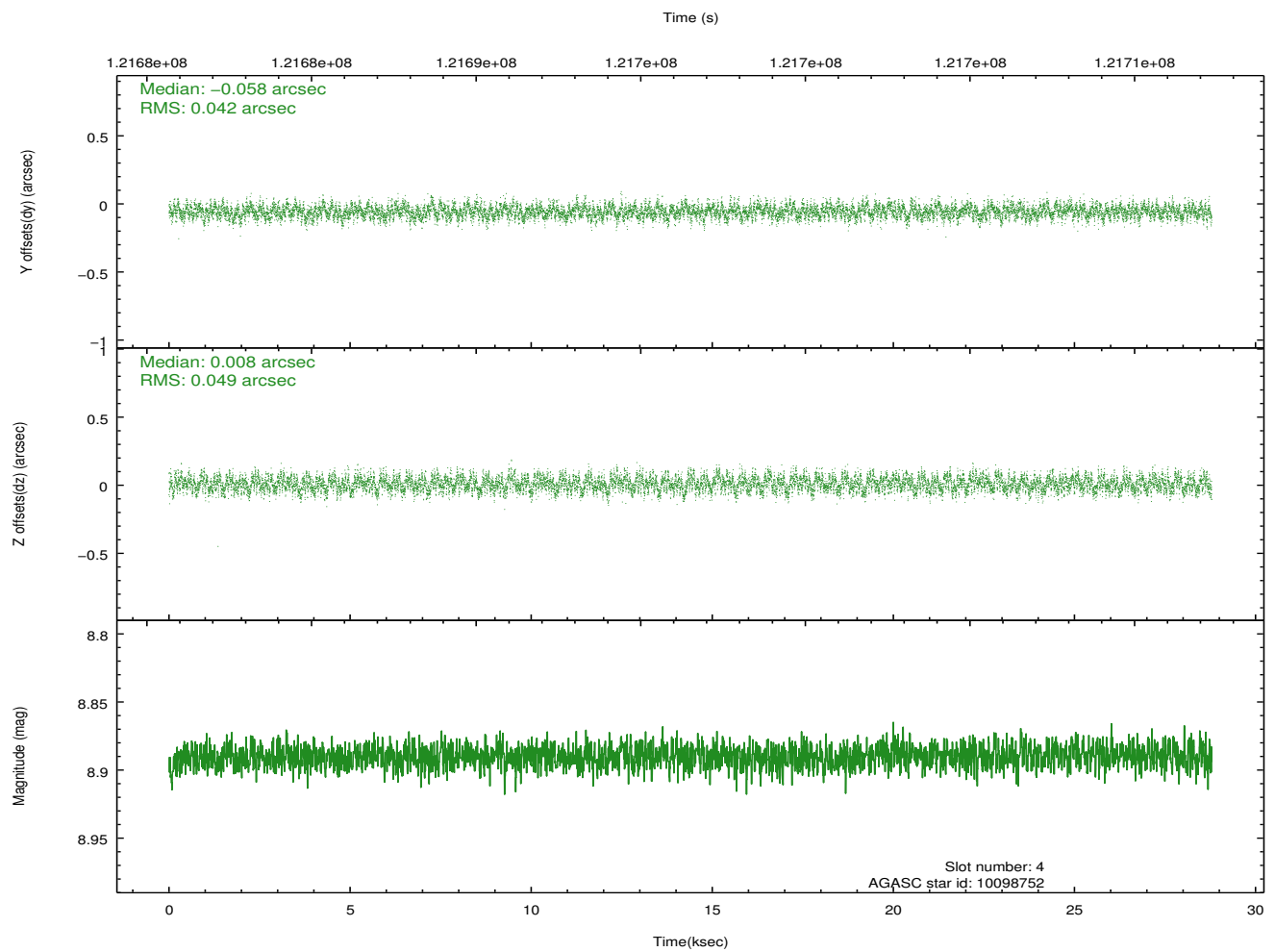
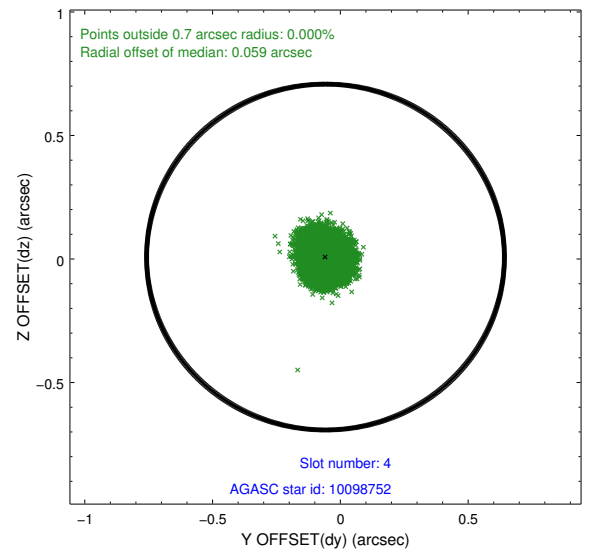
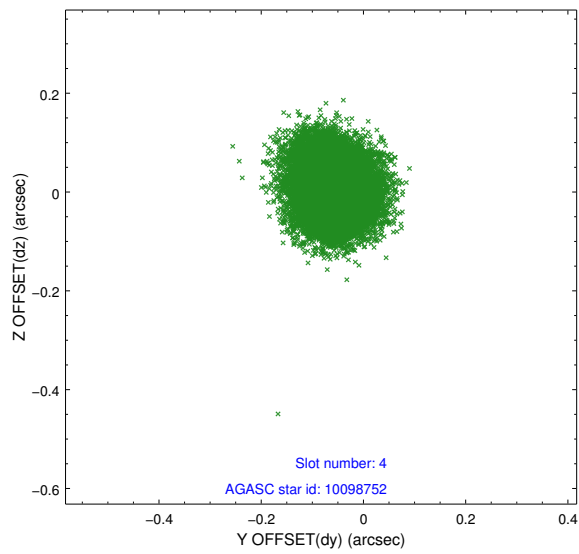
slot	status	id	mag	n_pts	med_dy	med_dz	dr1	dr2	ra	dec	mean_y	mean_z
0	FID	ACIS-S-2	7.11	7016	-0.023	0.014	0.009	0.014	0.000000	0.000000	-755.52	-1727.81
1	FID	ACIS-S-4	7.20	7014	-0.034	0.007	0.006	0.011	0.000000	0.000000	2157.68	180.62
2	FID	ACIS-S-5	7.23	7012	0.025	-0.012	0.009	0.015	0.000000	0.000000	-1808.23	174.31
3	GUIDE	10493648	8.04	14033	-0.024	-0.126	0.068	0.108	62.917035	5.323059	-2160.62	1788.32
4	GUIDE	10098752	8.89	14029	-0.058	0.008	0.070	0.110	63.736939	4.861472	-1966.32	-1583.04
5	GUIDE	10489120	8.96	14028	0.077	-0.077	0.080	0.125	63.037180	5.195794	-2313.26	1178.09
6	GUIDE	10098632	9.31	14023	-0.015	0.118	0.082	0.128	63.789336	4.774923	-2126.51	-1909.81
7	GUIDE	10493872	9.41	14019	0.020	0.078	0.089	0.145	63.703184	5.387990	-438.77	-454.30

2.4 Star Slots

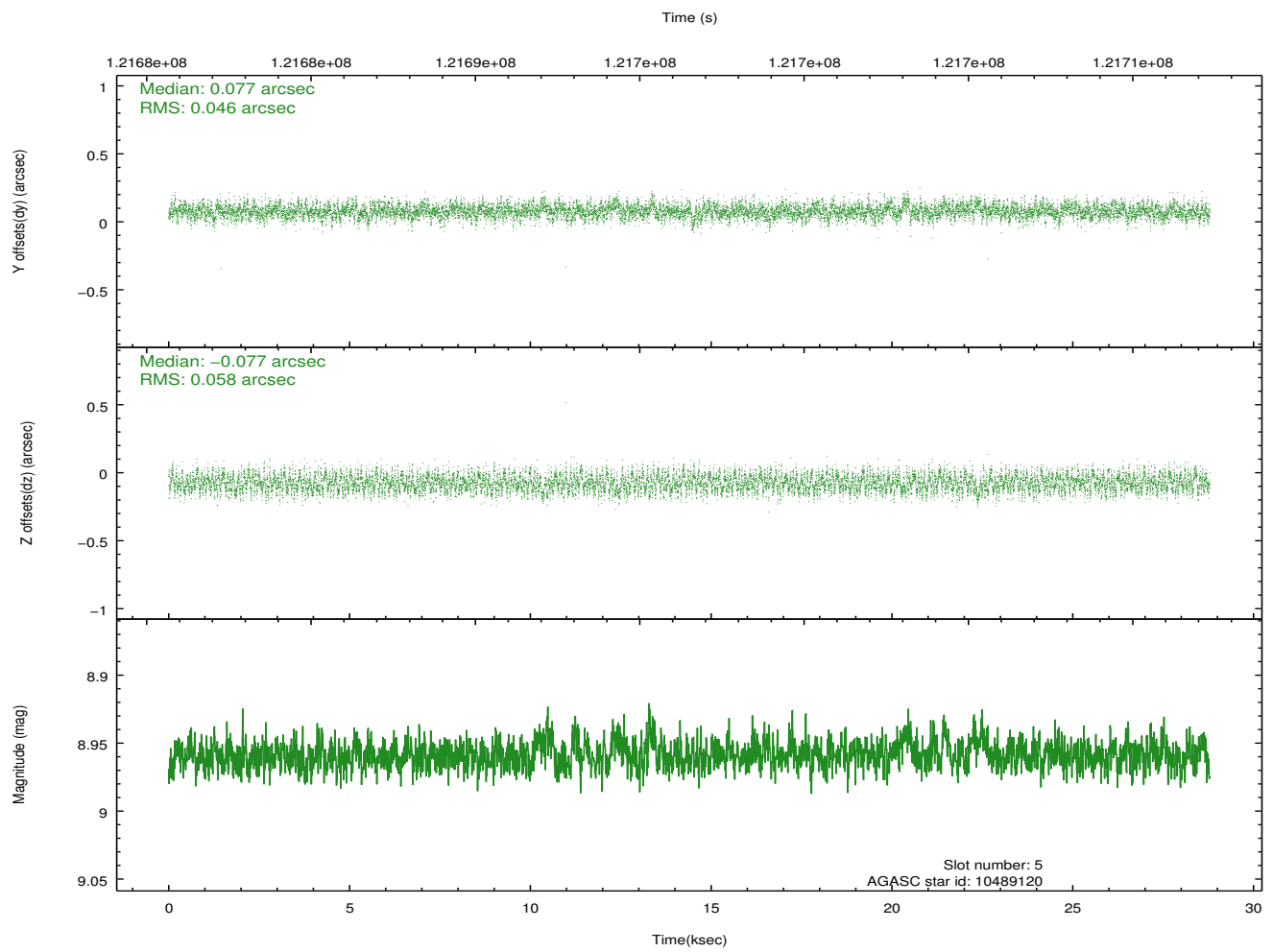
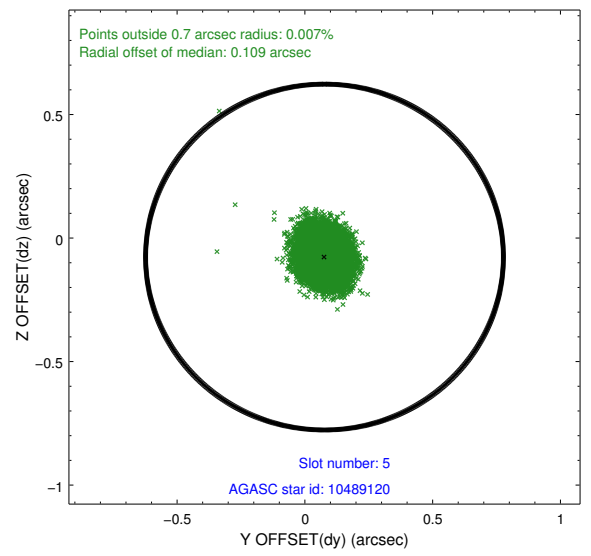
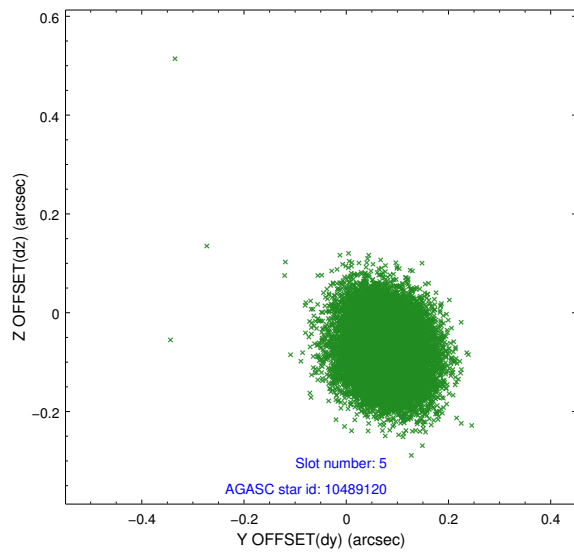
2.4.1 Slot 3



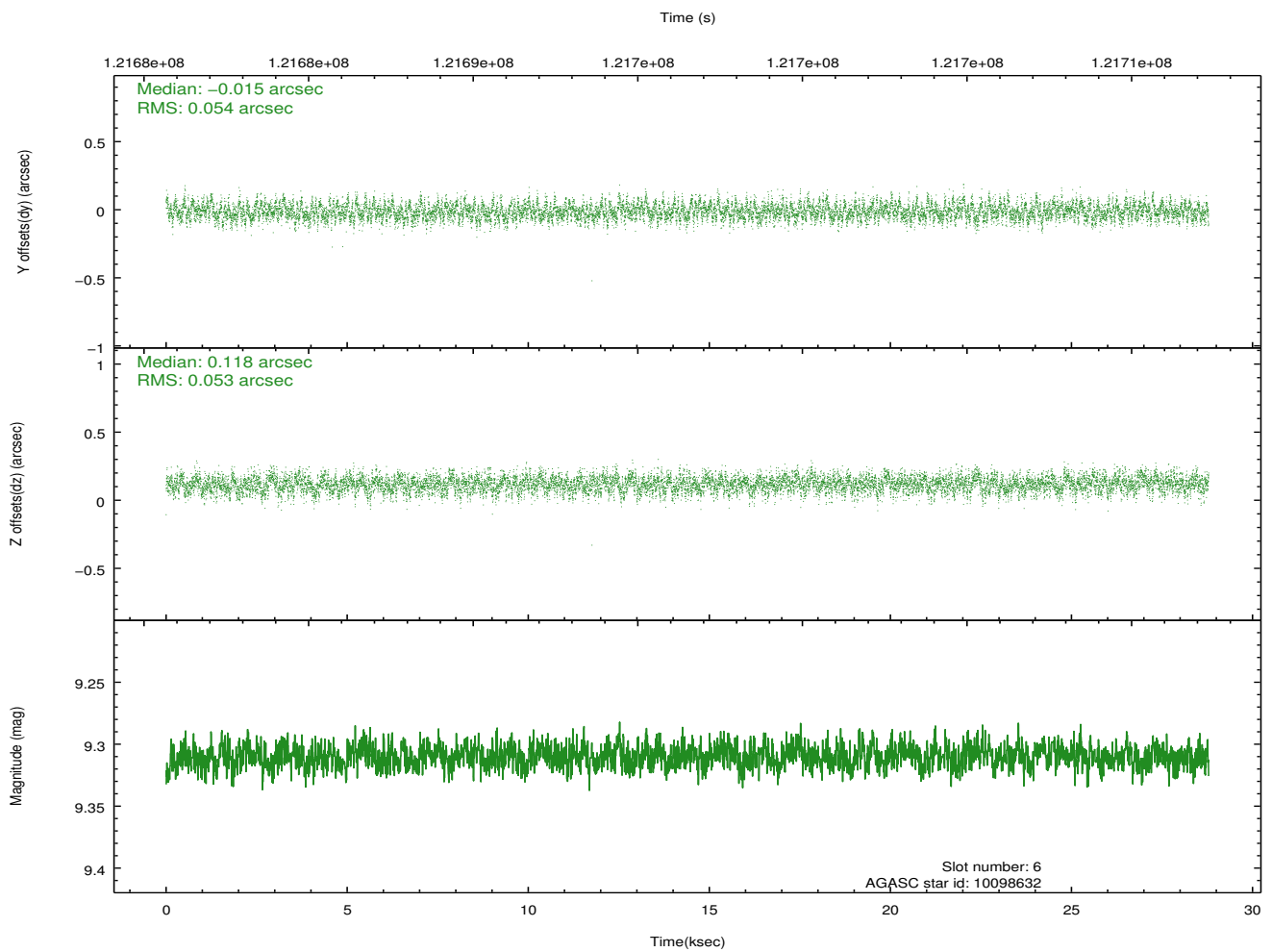
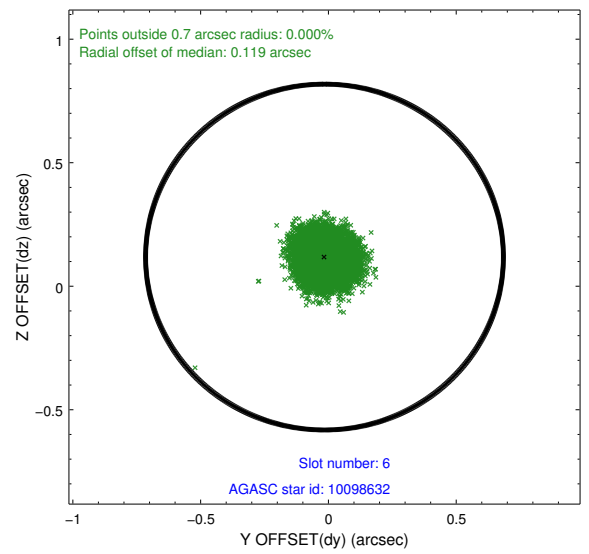
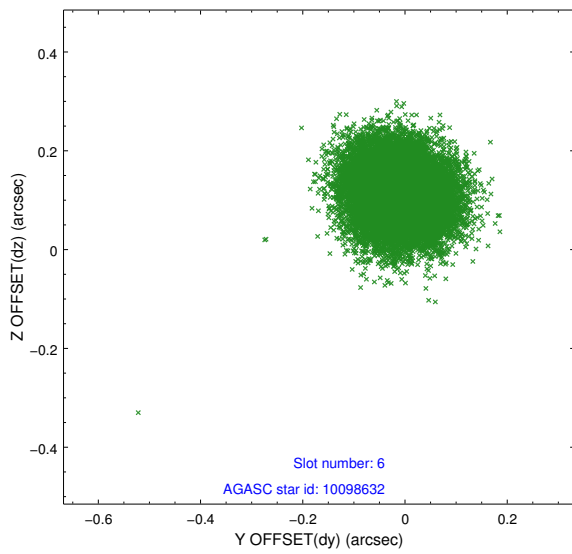
2.4.2 Slot 4



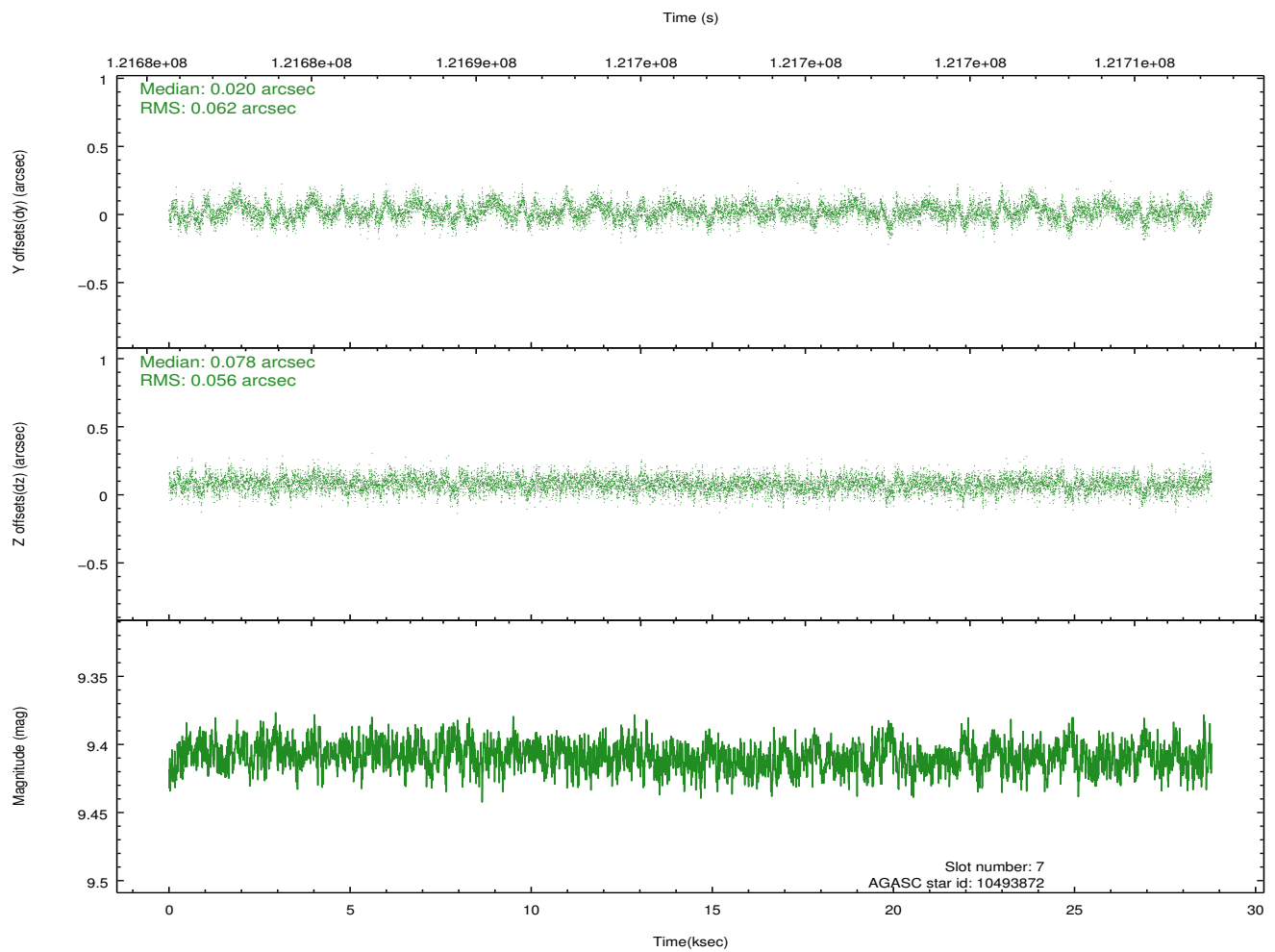
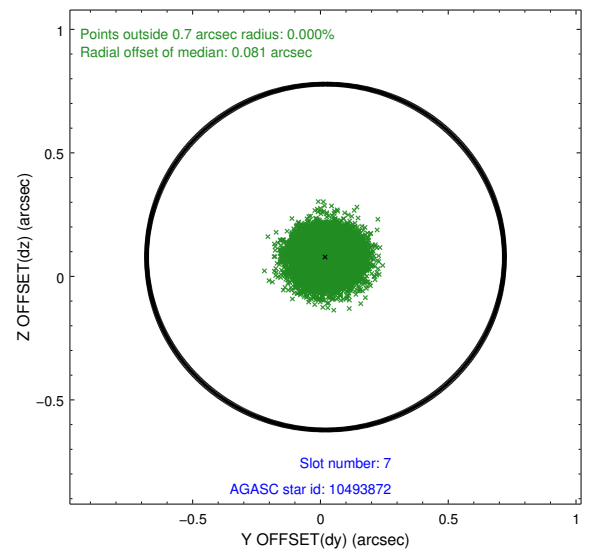
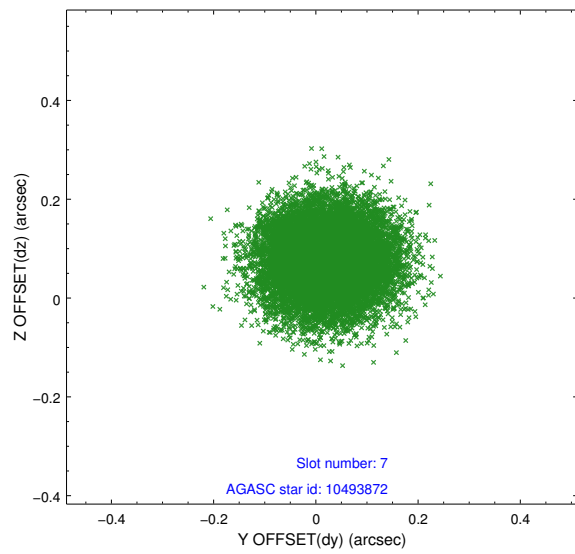
2.4.3 Slot 5



2.4.4 Slot 6

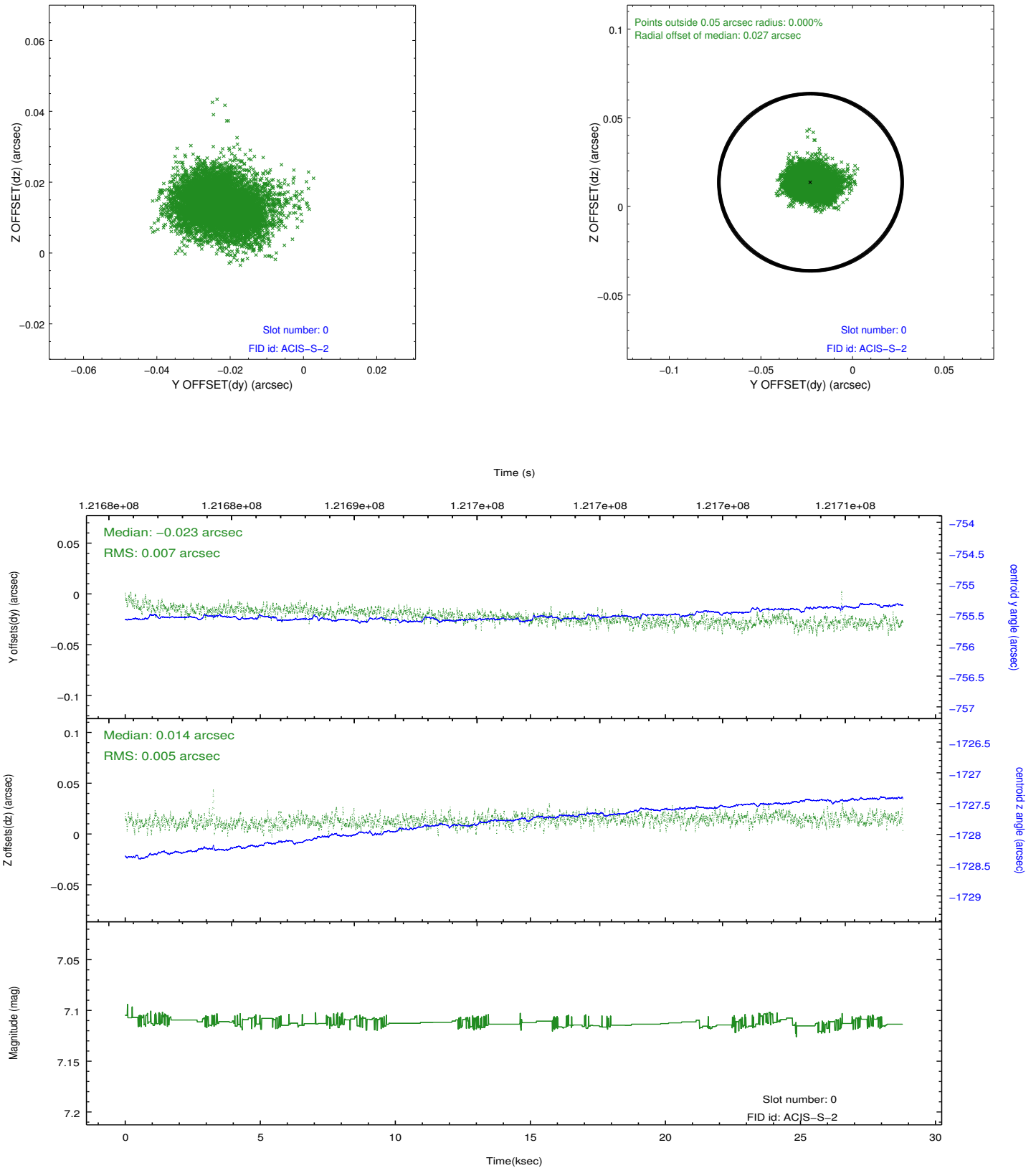


2.4.5 Slot 7

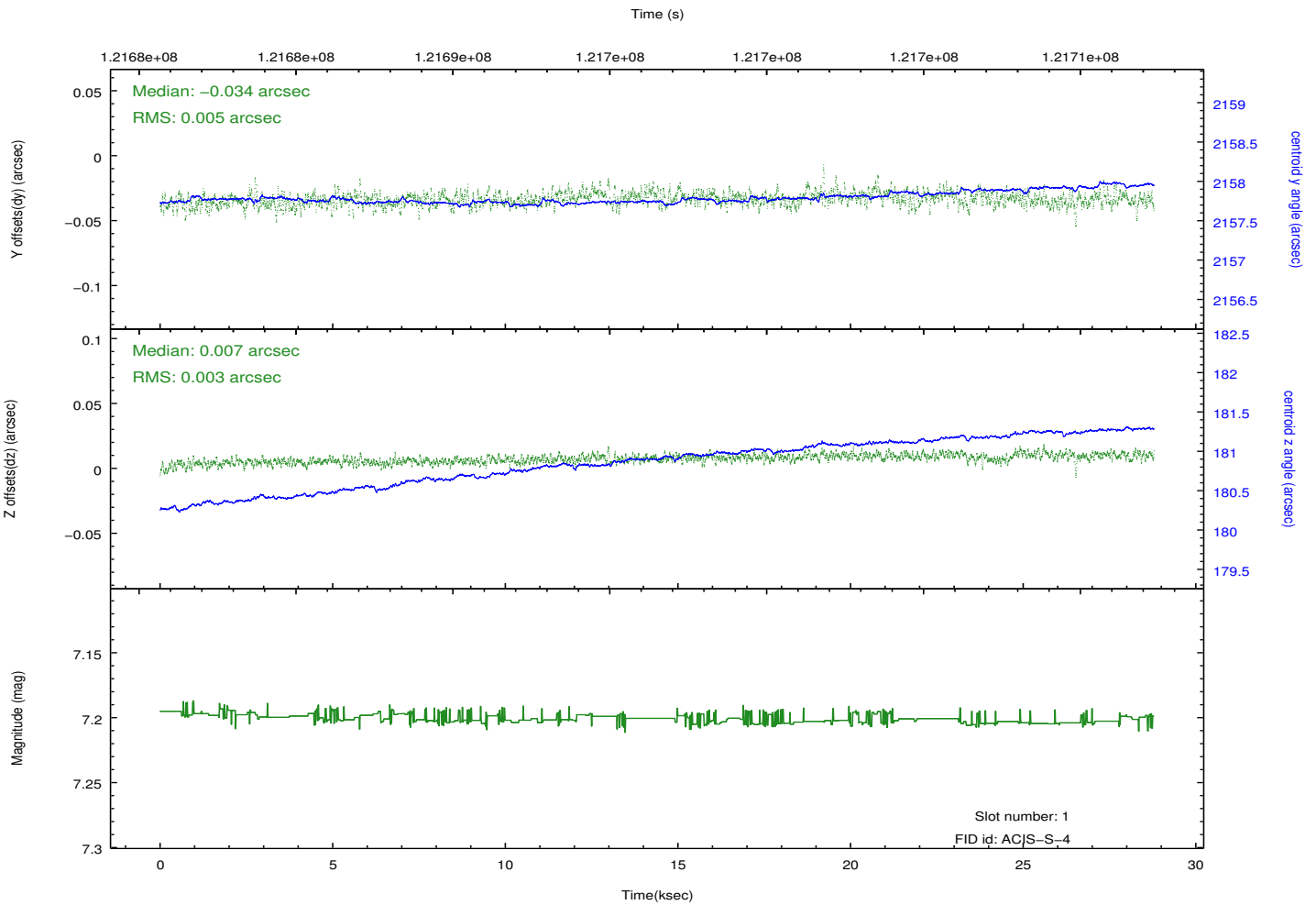
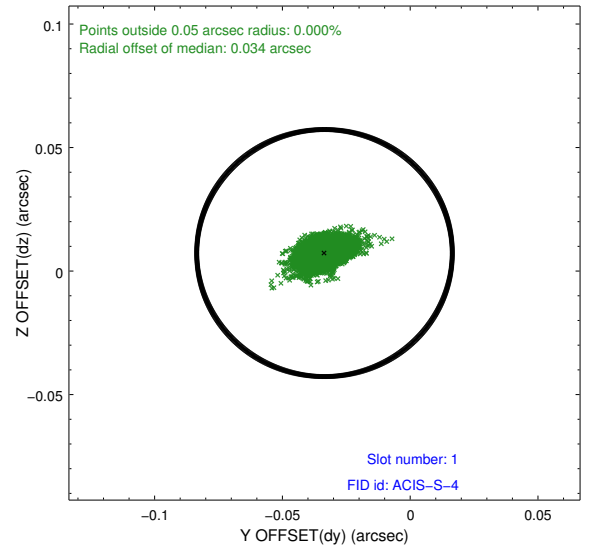
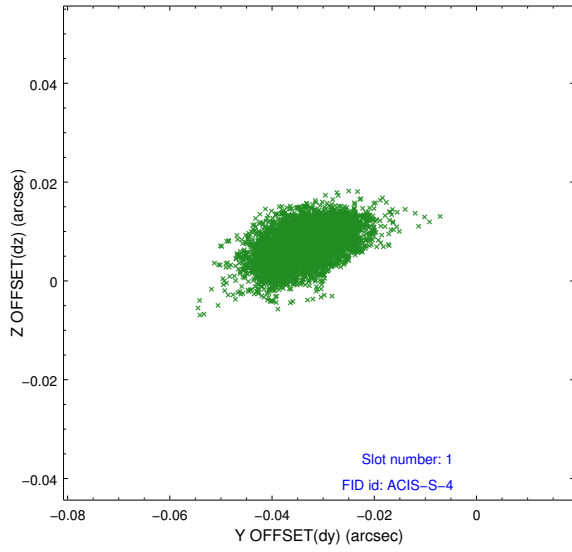


2.5 FID Slots

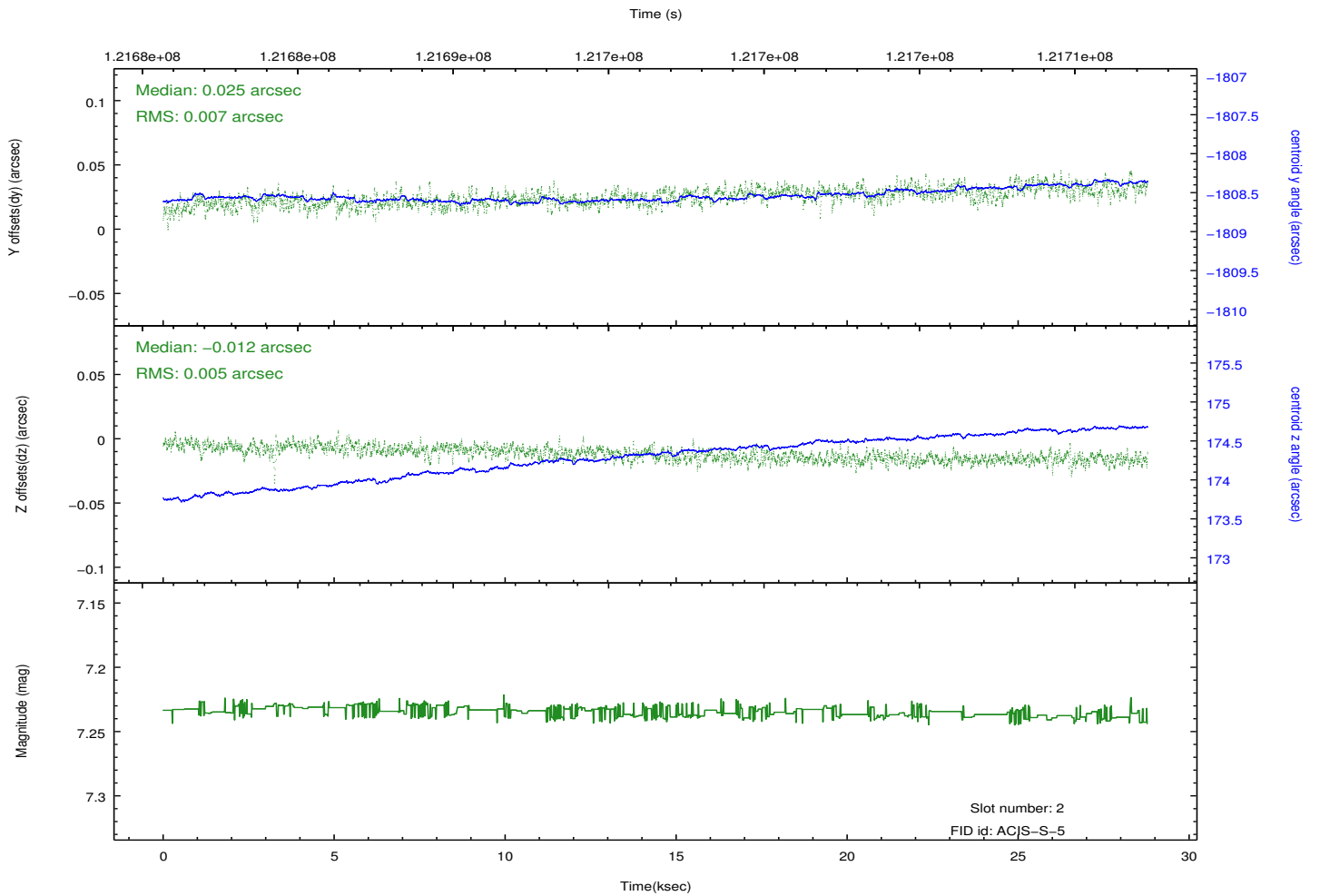
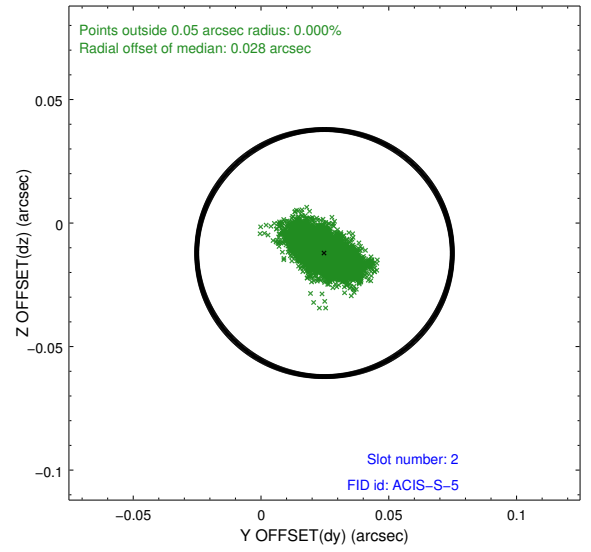
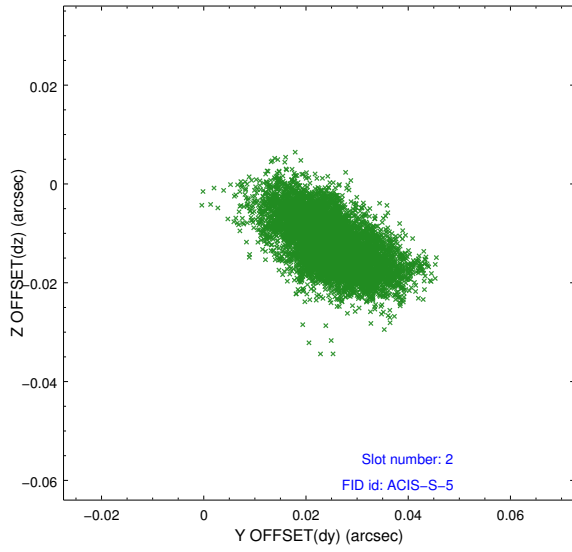
2.5.1 Slot 0



2.5.2 Slot 1



2.5.3 Slot 2



A Summary

A.1 Status

V&V Scientist	Jen Lauer
V&V Date (YYYY-MM-DD)	2012.09.27
V&V Edition	1
V&V Disposition and Status	OK
V&V Charge Time	28.777

A.2 Comments