

V&V Reference Report

L2 ASCDS Version : 8.4.5

Observation 3575 - L2 Version 3
Chandra X-Ray Center

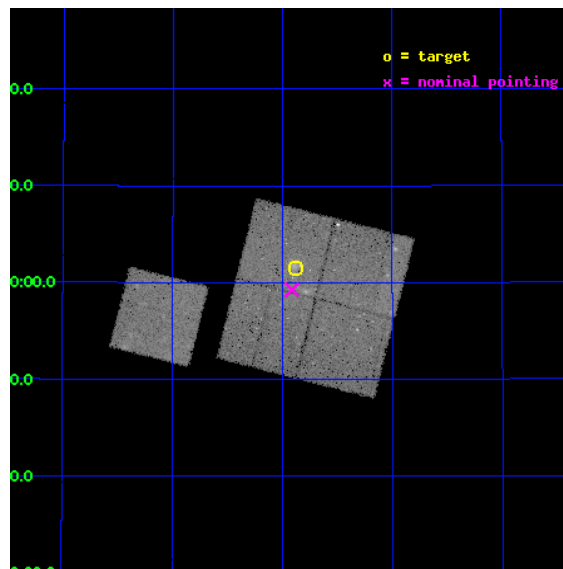
L2 Processing Date : Nov 4 2012

Contents

1	Front	2
2	OBI	3
2.1	OBI	3
2.1.1	Images	3
2.1.2	Bias	3
2.1.3	Parameters	4
2.1.4	Events	4
2.2	Compared Parameters	5
2.3	Aspect	6
2.4	Star Slots	9
2.4.1	Slot 3	9
2.4.2	Slot 4	10
2.4.3	Slot 5	11
2.4.4	Slot 6	12
2.4.5	Slot 7	13
2.5	FID Slots	14
2.5.1	Slot 0	14
2.5.2	Slot 1	15
2.5.3	Slot 2	16
A	Summary	17
A.1	Status	17
A.2	Comments	17

1 Front

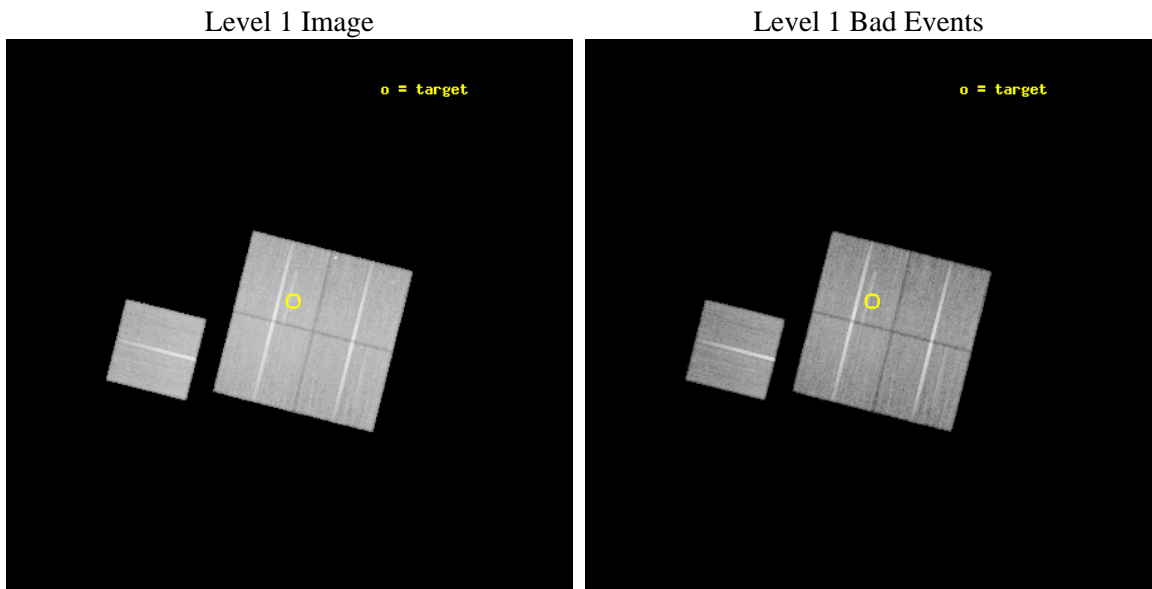
seq_num	800296	Sequence number
obs_id	3575	Observation id
title	CLUSTER - CL1641+4001	Proposal title
observer	Dr. Stephen Murray	Principal investigator
object	CL1641+4001	Source name
dtcycle	0	
cycle	P	events from which exps? Prim/Second/Both
ra_targ	250.46875	Observer's specified target RA [deg]
dec_targ	40.024722	Observer's specified target Dec [deg]
ra_nom	250.47832713989	Nominal RA [deg]
dec_nom	39.987768398256	Nominal Dec [deg]
roll_nom	284.1500186391	Nominal Roll [deg]
revision	3	Processing version of data
ontime	47141.699909329	Sum of GTIs [s]
livetime	46525.758894799	Livetime [s]
ontime0	47135.418008804	Sum of GTIs [s]
ontime1	47138.55893907	Sum of GTIs [s]
ontime2	47135.418048561	Sum of GTIs [s]
ontime3	47141.699909329	Sum of GTIs [s]
ontime6	47132.277038485	Sum of GTIs [s]
l2events	113360	Number of level 2 events



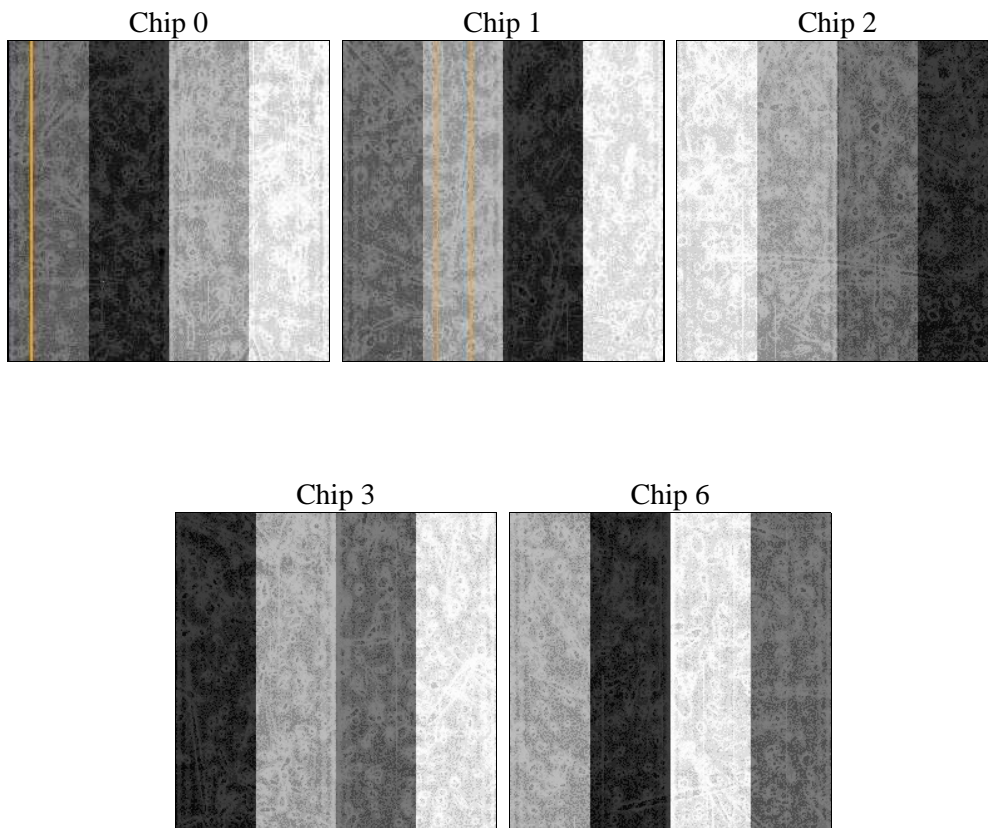
2 OBI

2.1 OBI

2.1.1 Images



2.1.2 Bias



2.1.3 Parameters

obi_num	0	Obi number	sched_exp_time	47000.000000	[s] Scheduled observation exposure time
ascdsver	8.4.5	Processing system revision	ontime	47141.699909329	Sum of GTIs [s]
caldbver	4.5.2	 	ontime0	47135.418008804	Sum of GTIs [s]
date	2012-11-04T12:19:59	Date and time of file creation	ontime1	47138.55893907	Sum of GTIs [s]
revision	3	Processing version of data	ontime2	47135.418048561	Sum of GTIs [s]
			ontime3	47141.699909329	Sum of GTIs [s]
			ontime6	47132.277038485	Sum of GTIs [s]
			l1events	1298526	Number of level 1 events

2.1.4 Events

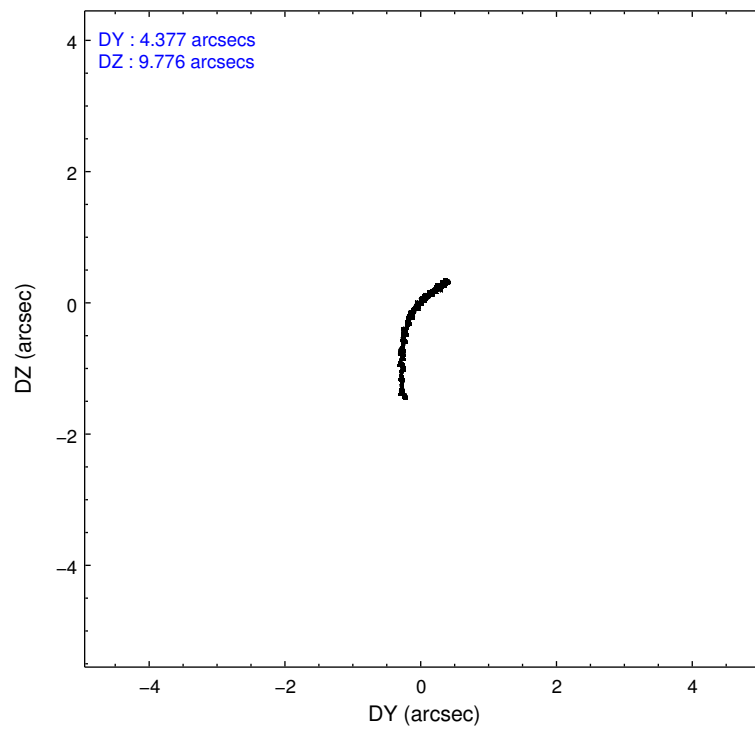
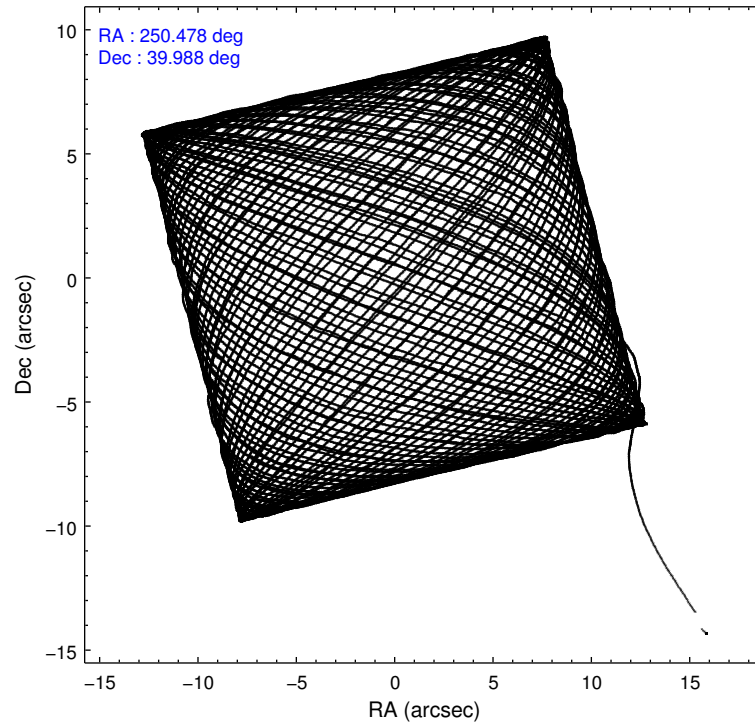
	ccd 0	ccd 1	ccd 2	ccd 3	ccd 6
level 1 events	242884	247157	275913	270323	262249
rejected events	217446	217061	250133	242993	234710
rejected %	89%	87%	90%	89%	89%

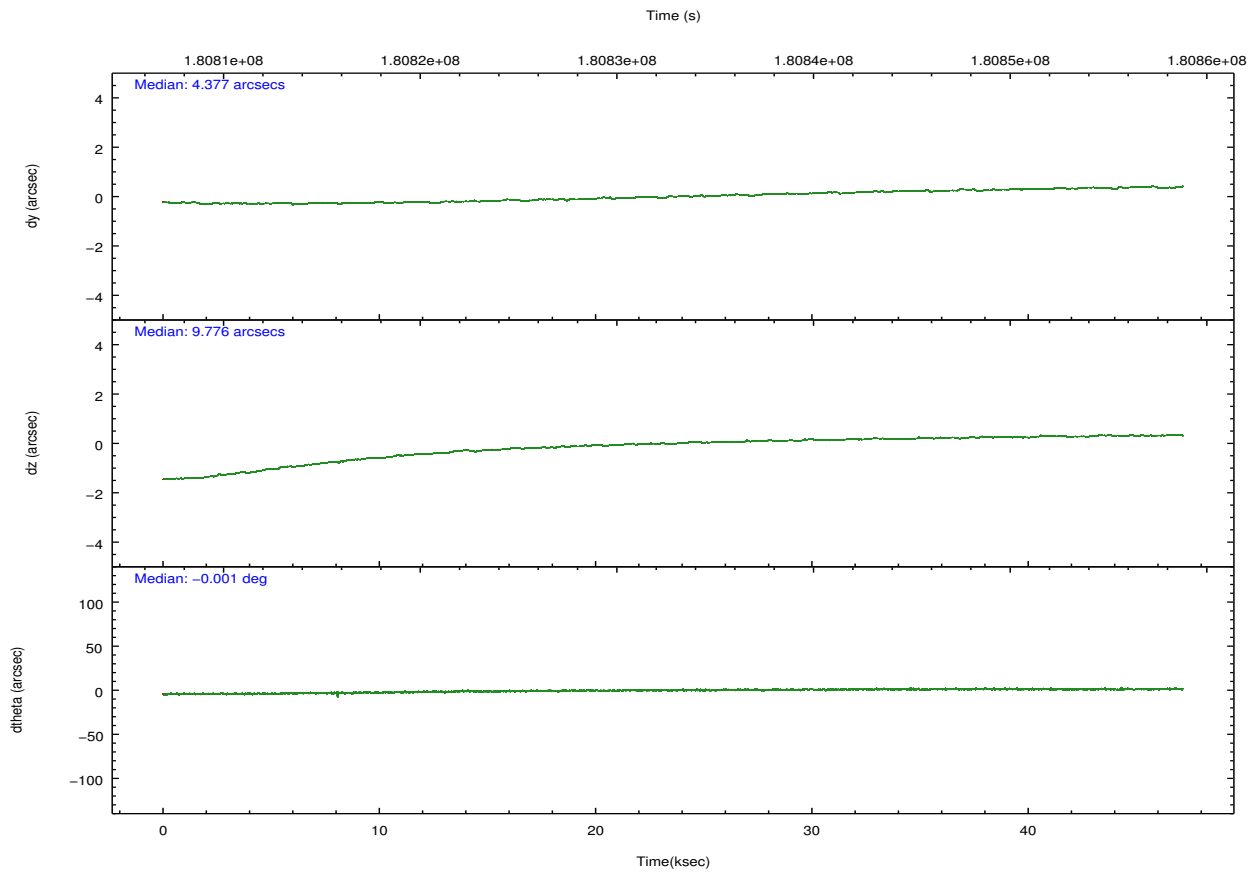
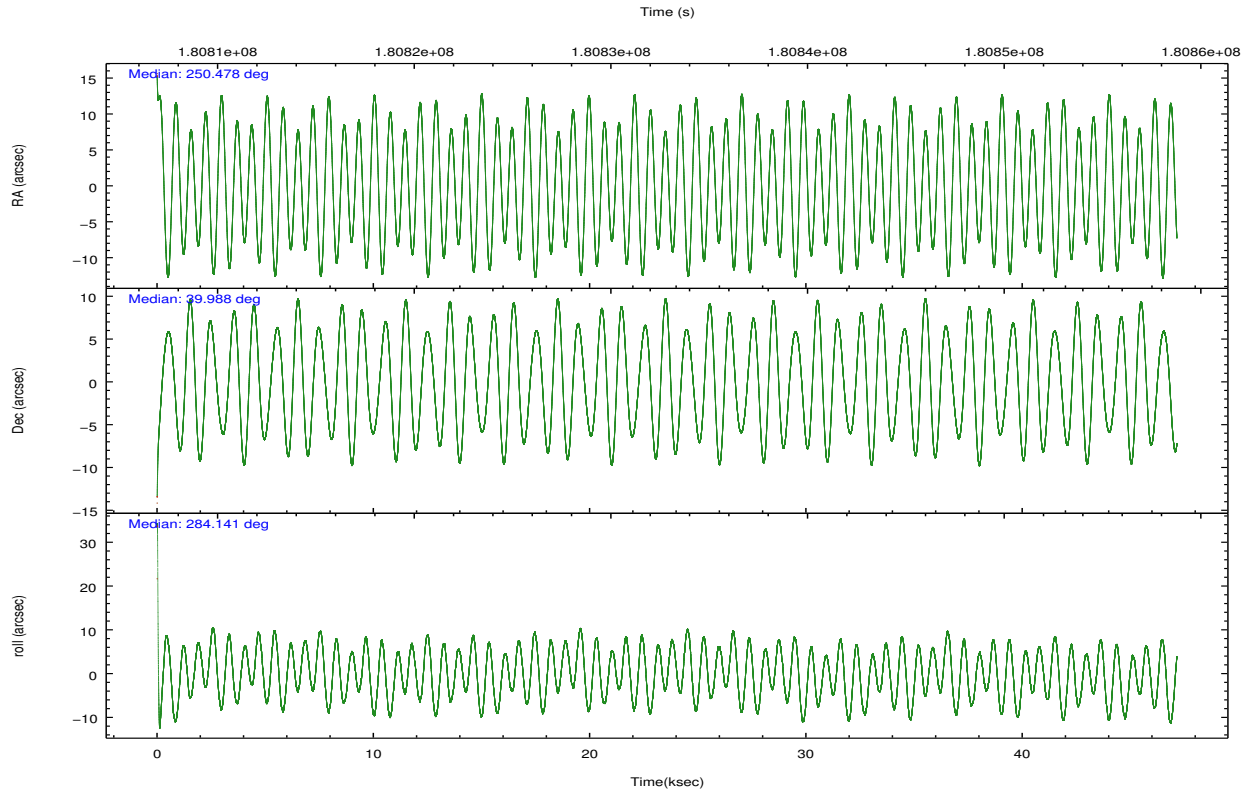
	ccd 0	ccd 1	ccd 2	ccd 3	ccd 6
grade 0 events	8903	12007	9633	11146	10518
	3%	4%	3%	4%	4%
grade 1 events	120	127	141	139	103
	0%	0%	0%	0%	0%
grade 2 events	5801	6293	5831	5517	5656
	2%	2%	2%	2%	2%
grade 3 events	3029	3257	2894	2965	3121
	1%	1%	1%	1%	1%
grade 4 events	2901	3190	2862	2932	2943
	1%	1%	1%	1%	1%
grade 5 events	8882	9701	8599	10416	9901
	3%	3%	3%	3%	3%
grade 6 events	5050	5609	4785	5004	5578
	2%	2%	1%	1%	2%
grade 7 events	208198	206973	241168	232204	224429
	85%	83%	87%	85%	85%

2.2 Compared Parameters

Parameter	Planned	Actual	Parameter	Planned	Actual
Instrument	ACIS	ACIS	Obspar format version number	7	7
Detector	ACIS-01236	ACIS-01236	Obspar file type	PREDICTED	ACTUAL
Grating	NONE	NONE	Obspar update status	NONE	UPDATED
Data mode	VFAINT	VFAINT	Number of optional ACIS chips dropped	0	0
Observation mode	POINTING	POINTING	On-chip summing requested	N	N
[deg] Pointing RA	250.453304	250.4783271398916	Subarray requested	NONE	NONE
[deg] Pointing Dec	40.007353	39.98776839825626	Alternating exposures requested	N	N
[deg] Pointing Roll	283.957397	284.1500186391021	[s] Primary exposure time	0.000000	3.1
[mm] SIM focus pos	-0.782348	-0.7809083437167272			
[mm] SIM defocus	0	0.001439871863259334			
[mm] SIM translation stage pos	-227.742463	-227.734108438797			
[mm] SIM translation stage offset	-5.85	-5.858344564132665			
[s] Observation start time (MET)	180809435.184000	180808235.58072			
Observation start date	2003-09-24T16:49:31	2003-09-24T16:30:35			
[s] Observation end time (MET)	180856435.184000	180857591.38284			
Observation end date	2003-09-25T05:52:51	2003-09-25T06:13:11			
Read mode	TIMED	TIMED			

2.3 Aspect



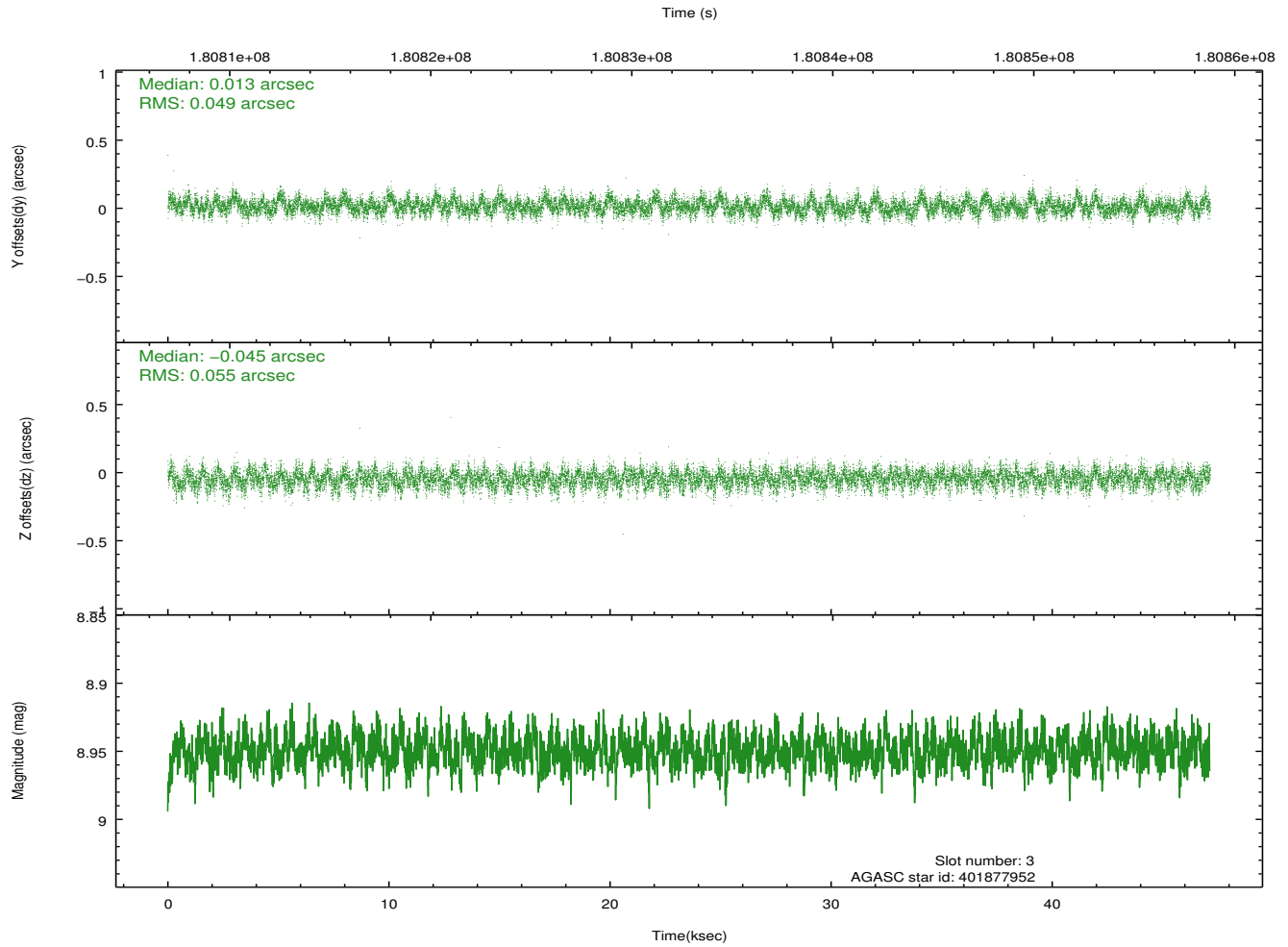
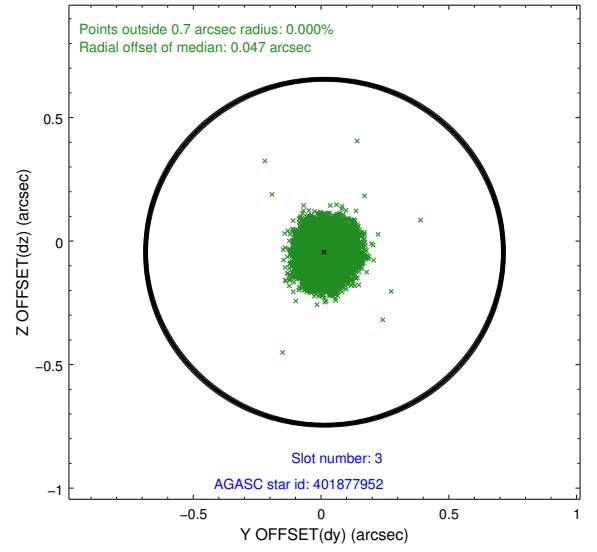
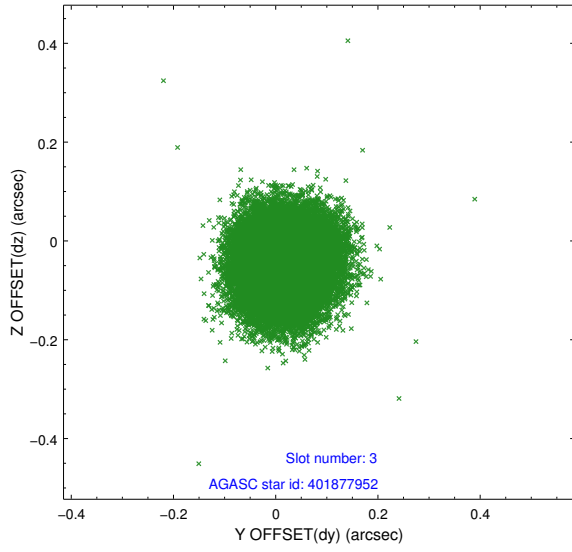


Slot Statistics

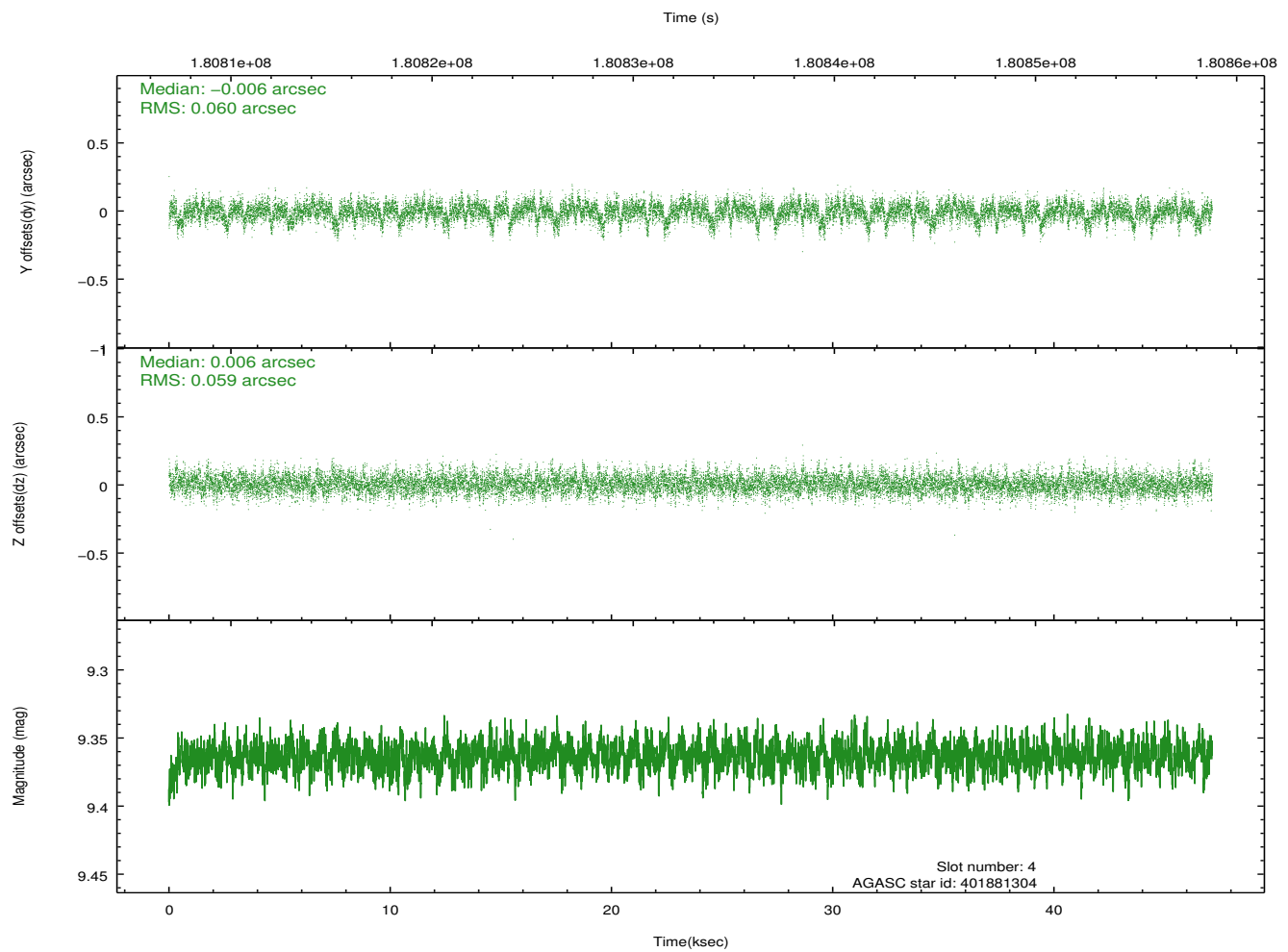
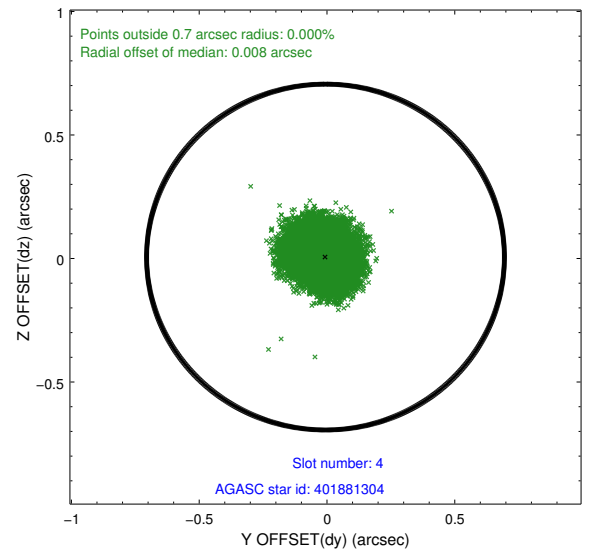
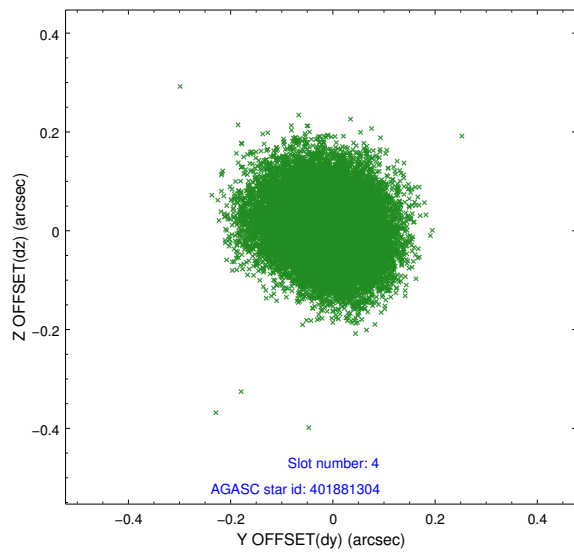
slot	status	id	mag	n_pts	med_dy	med_dz	dr1	dr2	ra	dec	mean_y	mean_z
0	FID	ACIS-I-1	7.23	11497	0.104	-0.067	0.020	0.051	0.000000	0.000000	935.34	-953.37
1	FID	ACIS-I-5	7.22	11499	-0.245	0.095	0.017	0.029	0.000000	0.000000	-1813.09	944.31
2	FID	ACIS-I-6	7.25	11498	0.051	0.042	0.010	0.023	0.000000	0.000000	400.89	1588.72
3	GUIDE	401877952	8.95	22985	0.013	-0.045	0.079	0.125	249.852397	40.152984	-912.34	-1476.60
4	GUIDE	401881304	9.36	22990	-0.006	0.006	0.090	0.148	249.710159	40.228901	-1274.41	-1787.62
5	GUIDE	402920824	9.55	22985	0.036	-0.032	0.091	0.147	250.008594	39.833340	309.03	-1343.07
6	GUIDE	402924200	9.45	22990	0.045	-0.057	0.087	0.141	250.233038	39.972708	-25.72	-619.32
7	GUIDE	402917000	9.20	22988	-0.097	0.129	0.102	0.170	251.000675	40.762596	-2283.36	2105.67

2.4 Star Slots

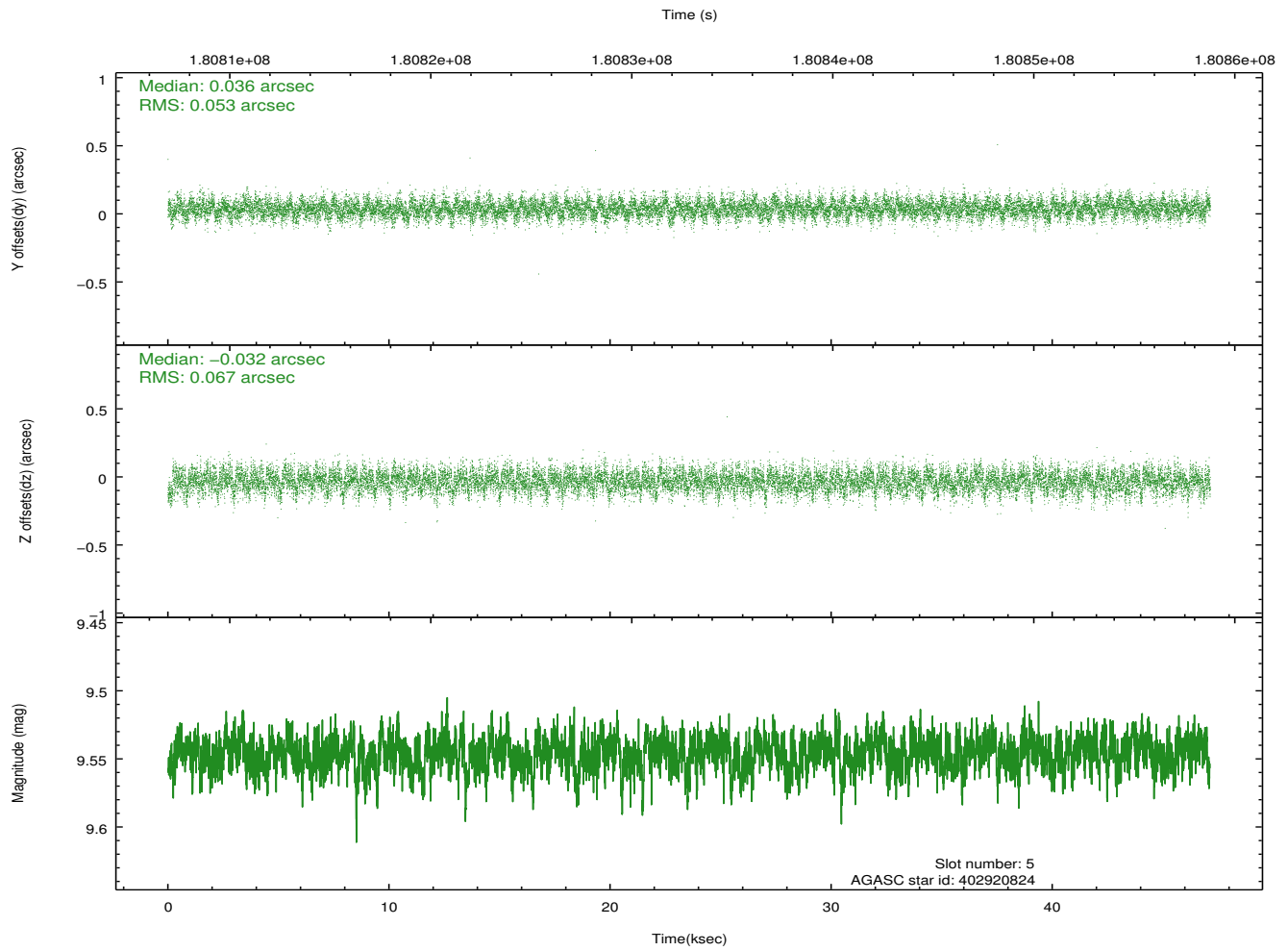
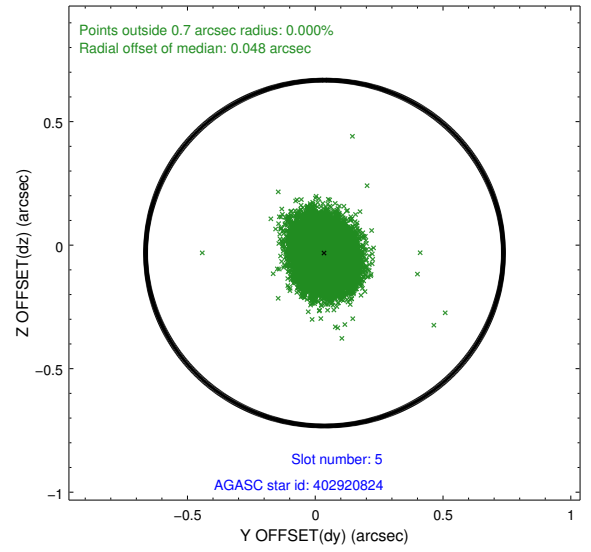
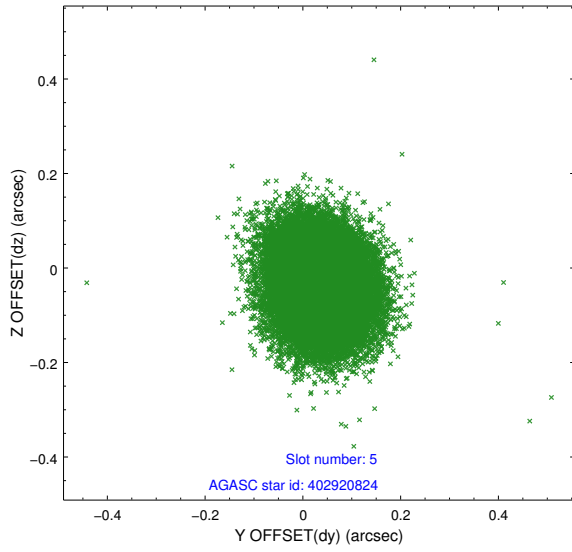
2.4.1 Slot 3



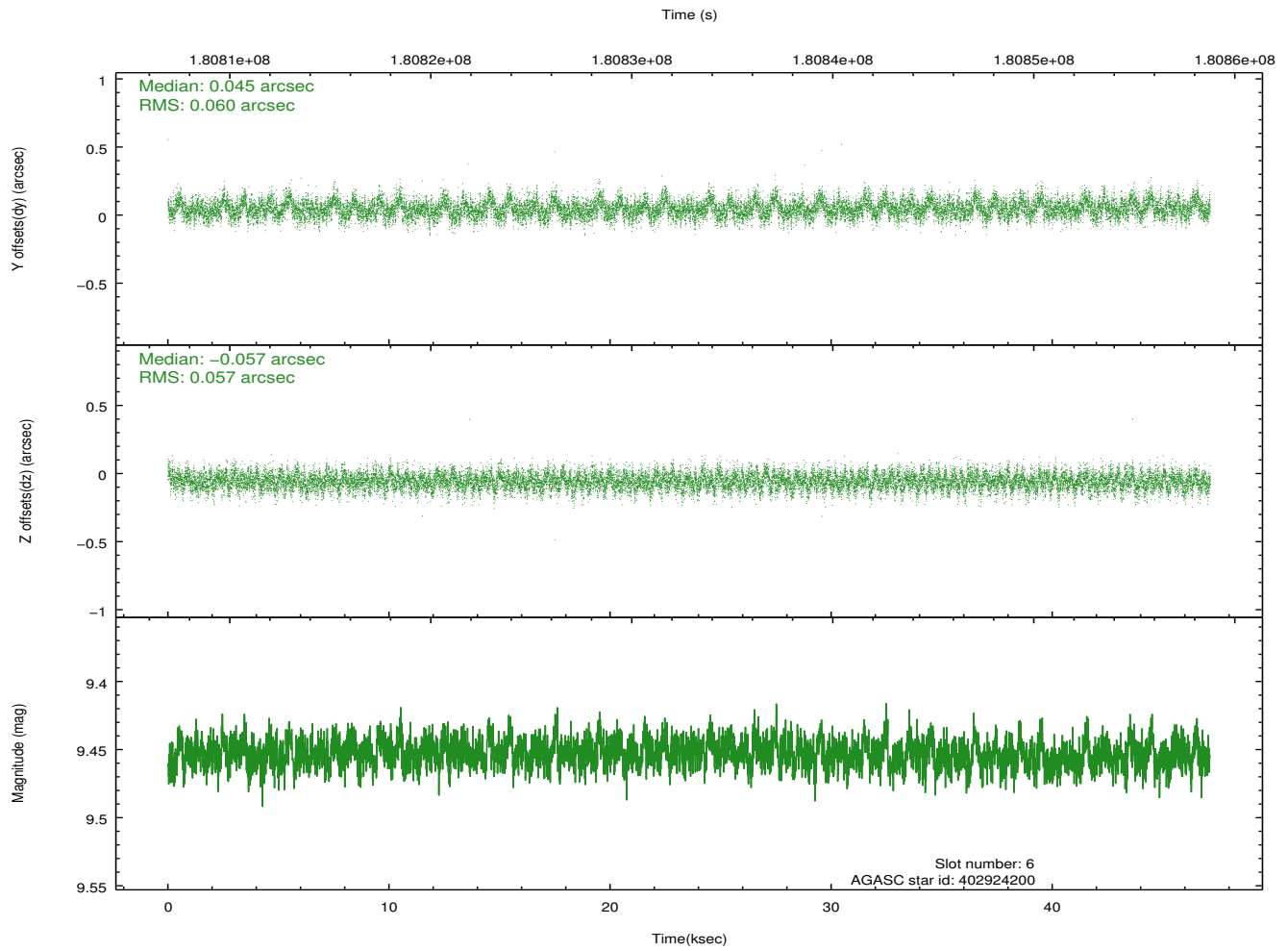
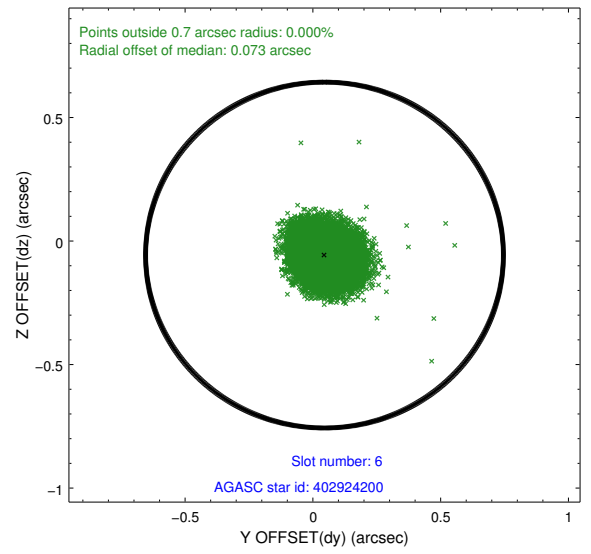
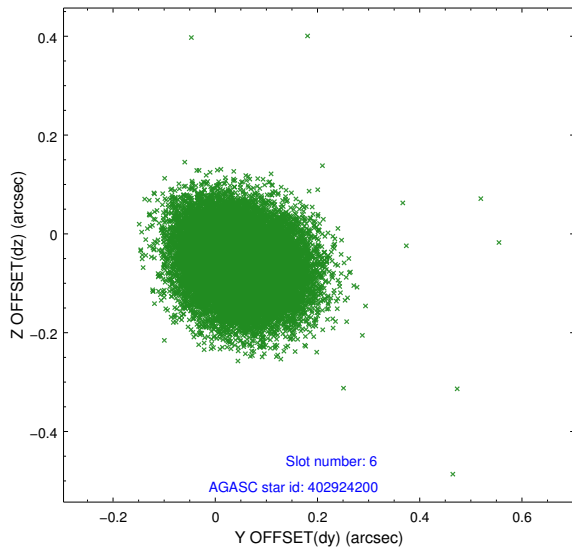
2.4.2 Slot 4



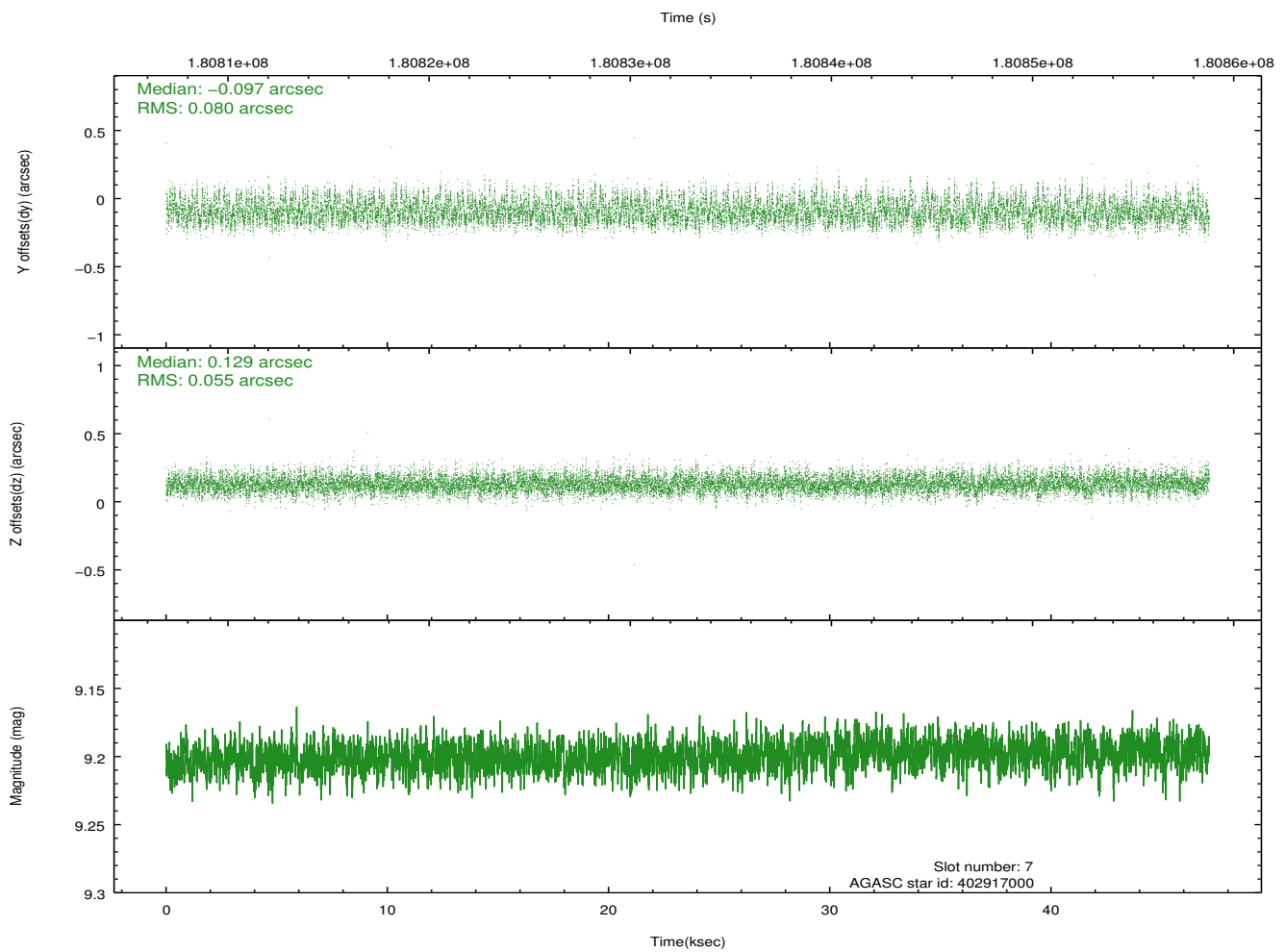
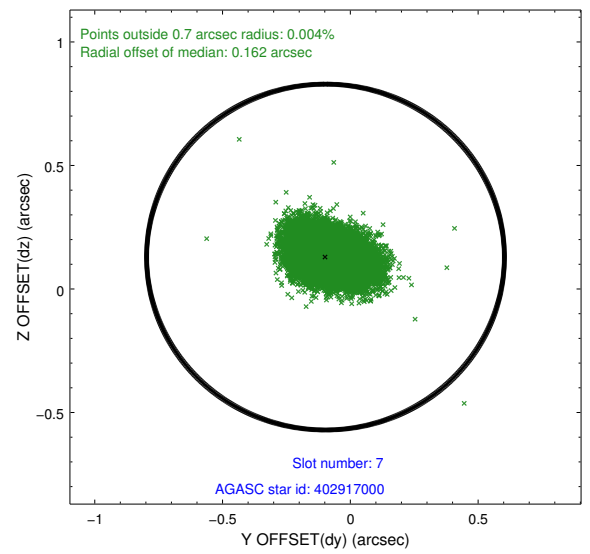
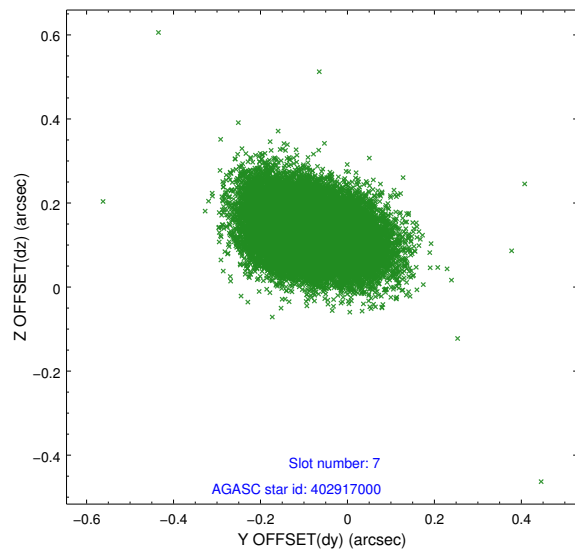
2.4.3 Slot 5



2.4.4 Slot 6

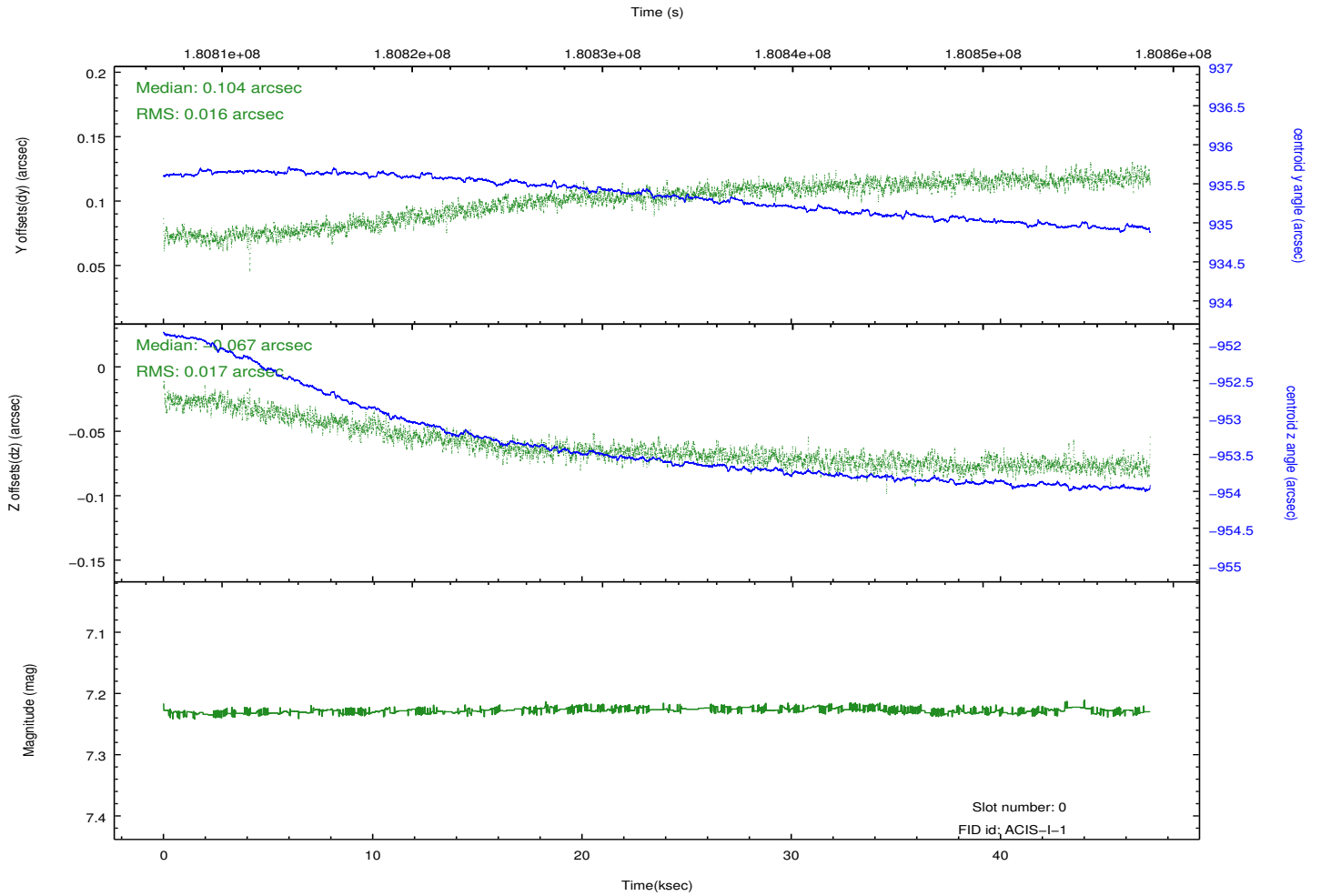
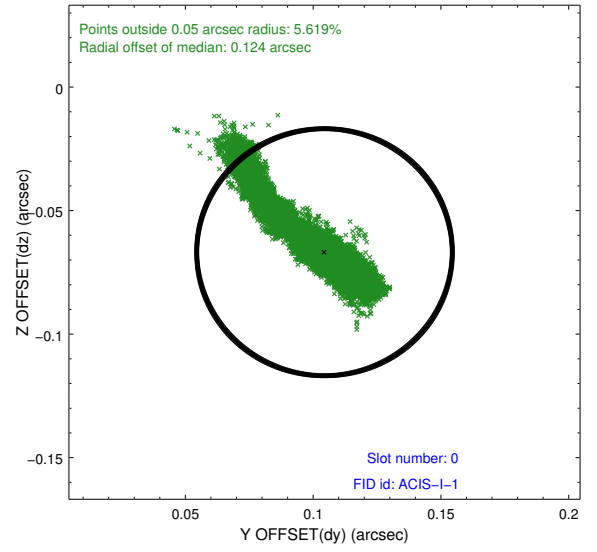
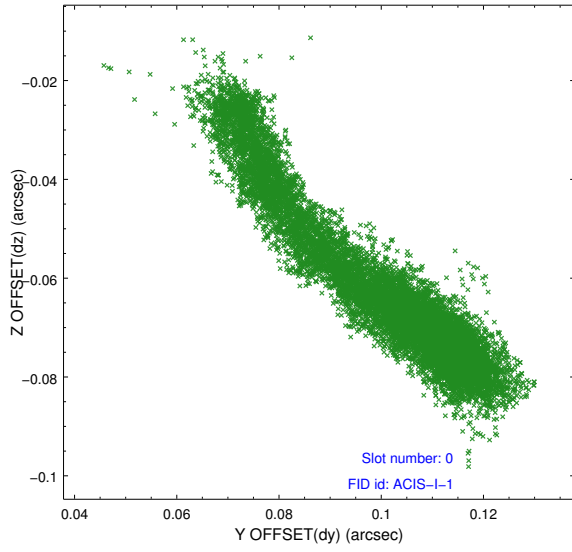


2.4.5 Slot 7

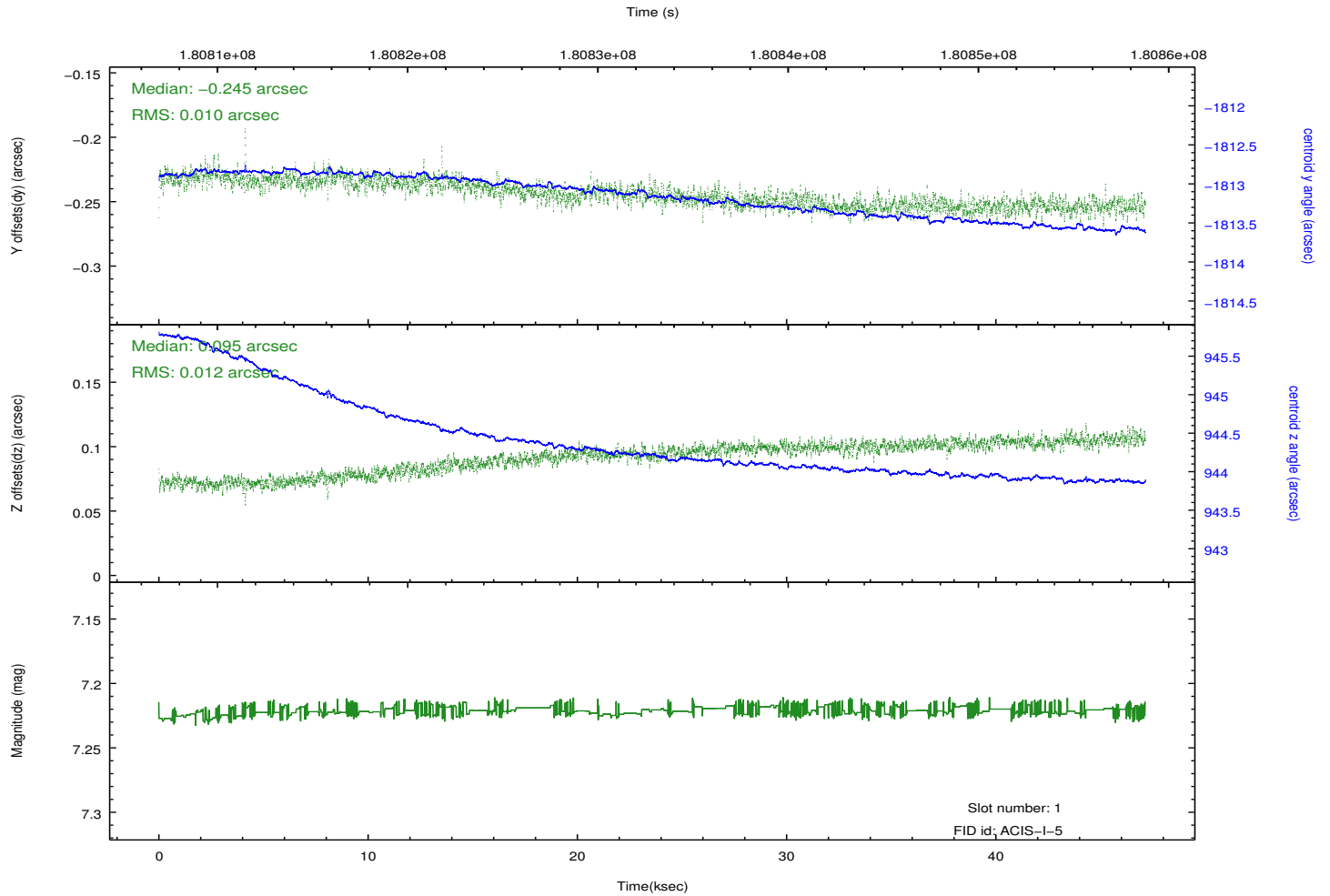
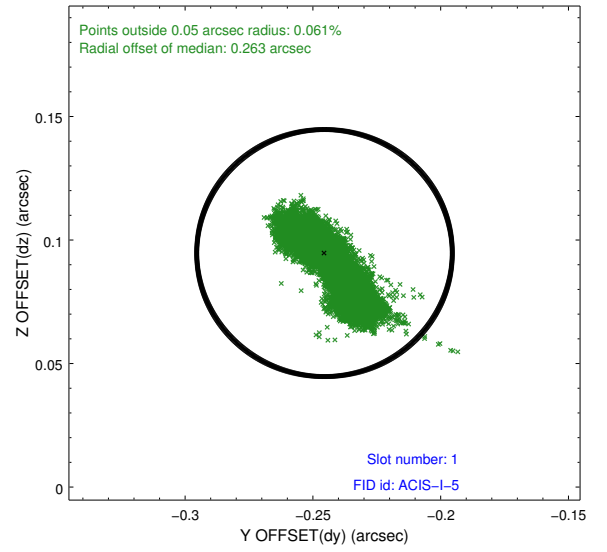
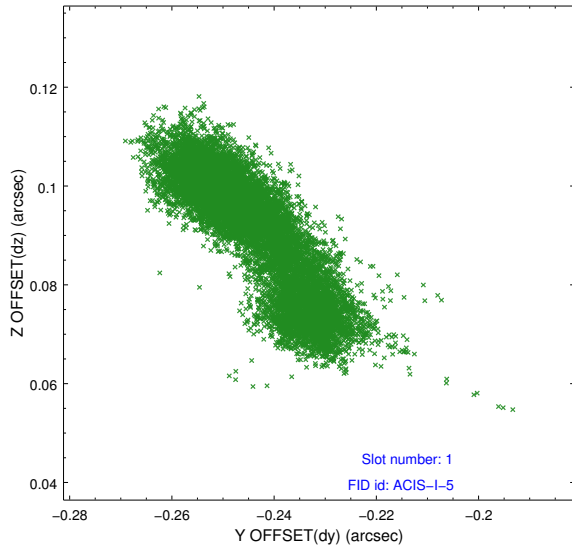


2.5 FID Slots

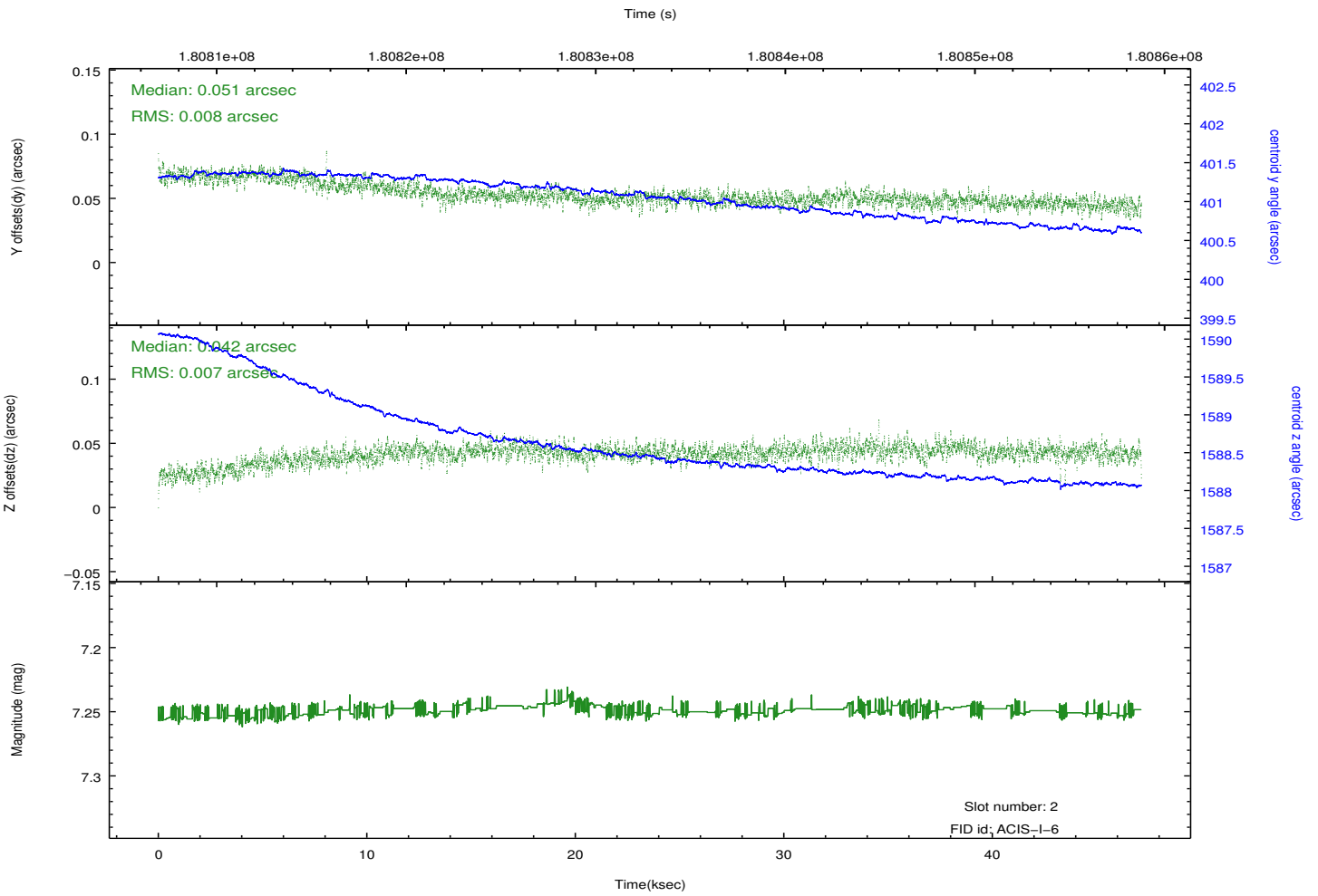
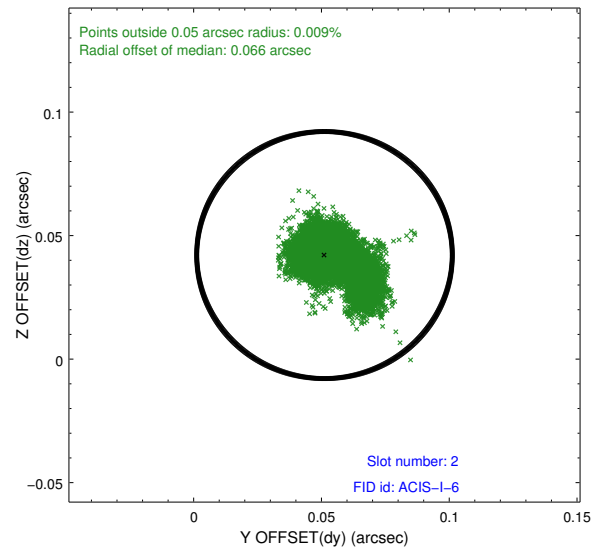
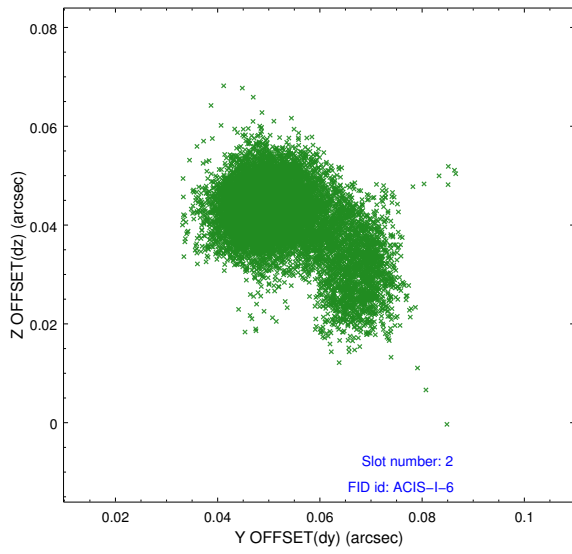
2.5.1 Slot 0



2.5.2 Slot 1



2.5.3 Slot 2



A Summary

A.1 Status

V&V Scientist	Beth Sundheim
V&V Date (YYYY-MM-DD)	2012.11.26
V&V Edition	1
V&V Disposition and Status	OK
V&V Charge Time	47.141

A.2 Comments