

V&V Reference Report

L2 ASCDS Version : 8.4.5

Observation 3585 - L2 Version 3
Chandra X-Ray Center

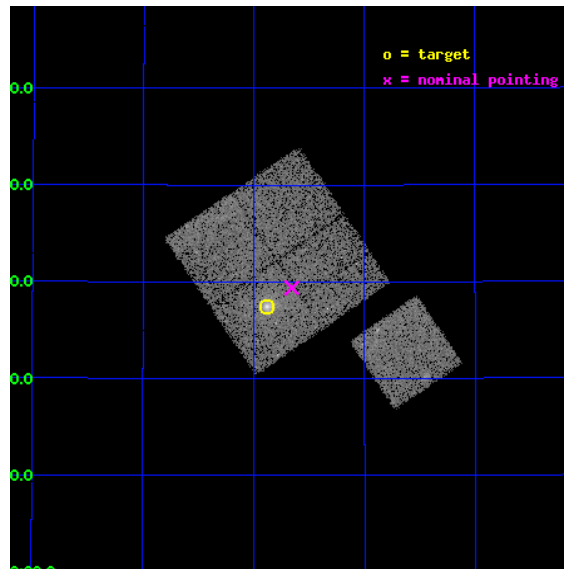
L2 Processing Date : Oct 20 2012

Contents

1	Front	2
2	OBI	3
2.1	OBI	3
2.1.1	Images	3
2.1.2	Bias	3
2.1.3	Parameters	4
2.1.4	Events	4
2.2	Compared Parameters	5
2.3	Aspect	6
2.4	Star Slots	9
2.4.1	Slot 3	9
2.4.2	Slot 4	10
2.4.3	Slot 5	11
2.4.4	Slot 6	12
2.4.5	Slot 7	13
2.5	FID Slots	14
2.5.1	Slot 0	14
2.5.2	Slot 1	15
2.5.3	Slot 2	16
A	Summary	17
A.1	Status	17
A.2	Comments	17

1 Front

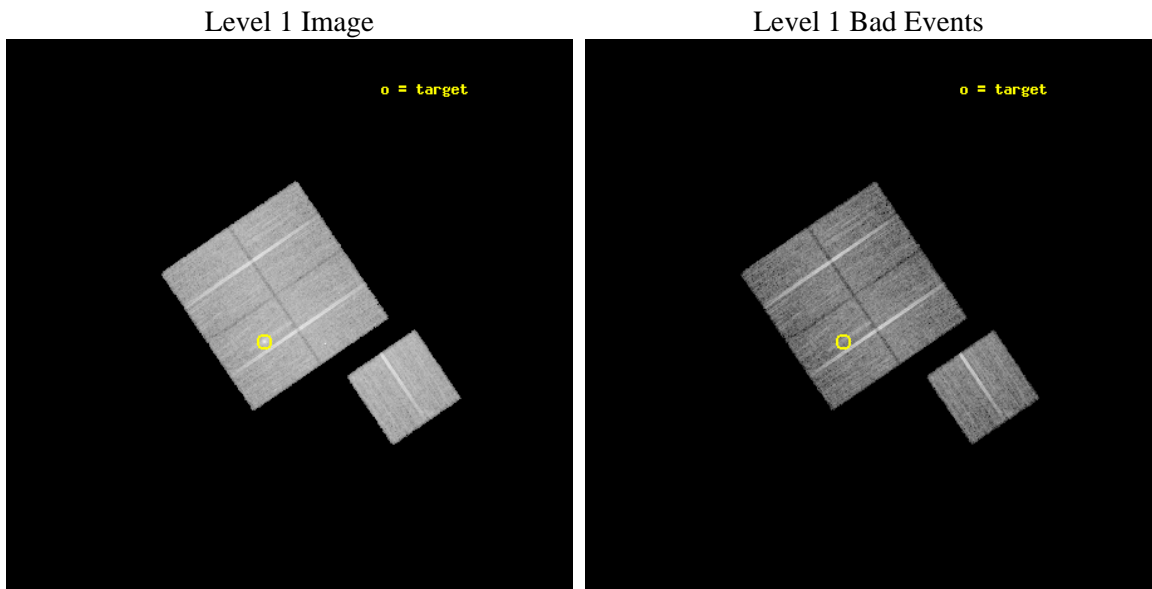
seq_num	800306	Sequence number
obs_id	3585	Observation id
title	X-RAY/SZ DETERMINATION OF COSMOLOGICAL PARAMETERS	Proposal title
observer	DR. LEON VANSPEYBROECK	Principal investigator
object	MACS-J0744.8+3927	Source name
dtcycle	0	
cycle	P	events from which exps? Prim/Second/Both
ra_targ	116.220417	Observer's specified target RA [deg]
dec_targ	39.4575	Observer's specified target Dec [deg]
ra_nom	116.16371694109	Nominal RA [deg]
dec_nom	39.489663337439	Nominal Dec [deg]
roll_nom	145.81981399852	Nominal Roll [deg]
revision	3	Processing version of data
ontime	20118.958981067	Sum of GTIs [s]
livetime	19856.089970617	Livetime [s]
ontime0	20122.099961281	Sum of GTIs [s]
ontime1	20122.099961281	Sum of GTIs [s]
ontime2	20118.958961129	Sum of GTIs [s]
ontime3	20118.958981067	Sum of GTIs [s]
ontime6	20122.099961281	Sum of GTIs [s]
l2events	48890	Number of level 2 events



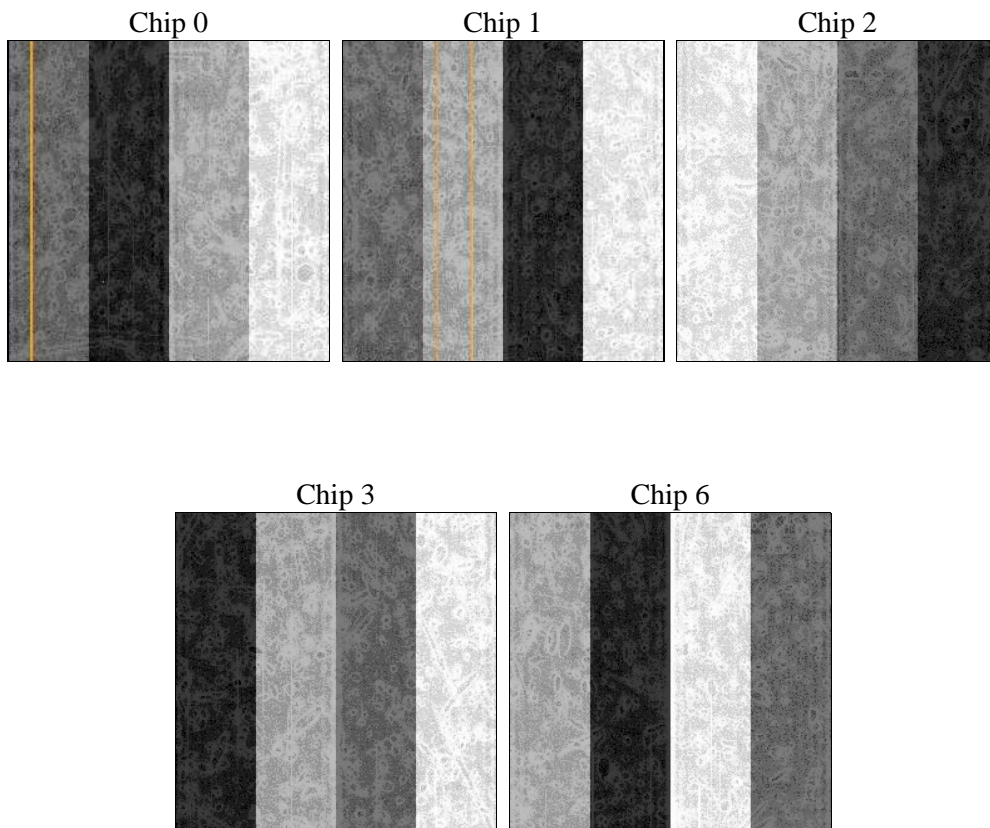
2 OBI

2.1 OBI

2.1.1 Images



2.1.2 Bias



2.1.3 Parameters

obi_num	1	Obi number	sched_exp_time	20000.000000	[s] Scheduled observation exposure time
ascdsver	8.4.5	Processing system revision	ontime	20118.958981067	Sum of GTIs [s]
caldbver	4.5.2	 	ontime0	20122.099961281	Sum of GTIs [s]
date	2012-10-20T16:54:45	Date and time of file creation	ontime1	20122.099961281	Sum of GTIs [s]
revision	3	Processing version of data	ontime2	20118.958961129	Sum of GTIs [s]
			ontime3	20118.958981067	Sum of GTIs [s]
			ontime6	20122.099961281	Sum of GTIs [s]
			l1events	525071	Number of level 1 events

2.1.4 Events

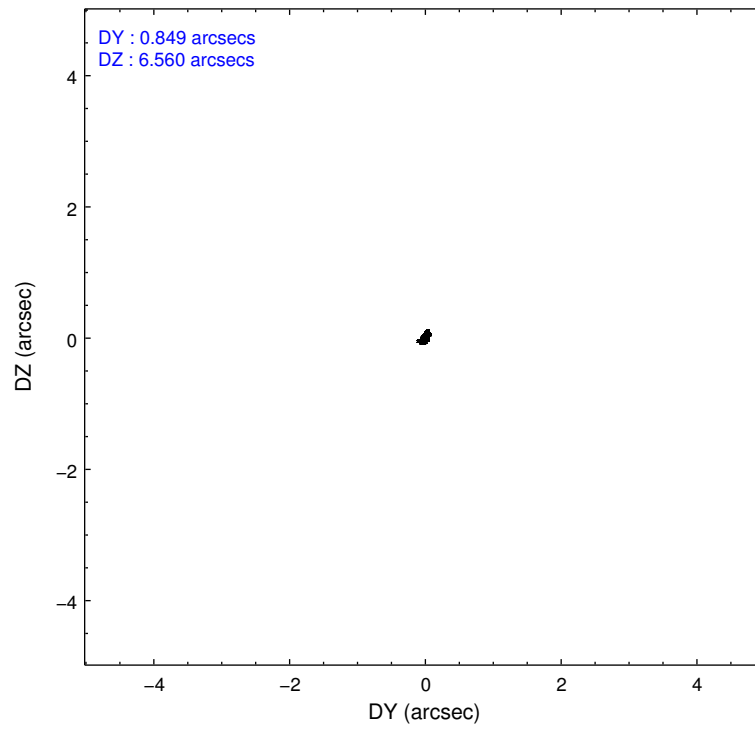
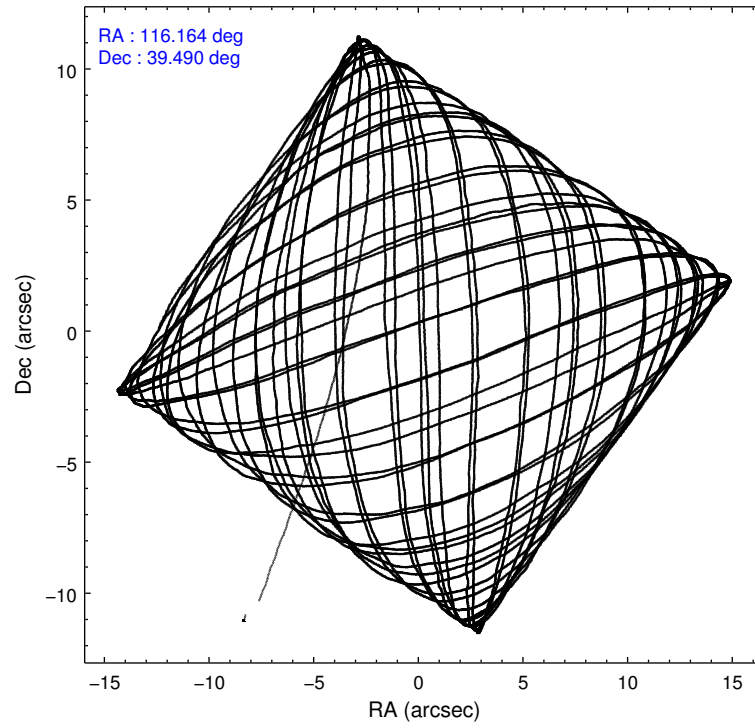
	ccd 0	ccd 1	ccd 2	ccd 3	ccd 6
level 1 events	98000	100080	108270	108372	110349
rejected events	87527	88272	97465	94931	98610
rejected %	89%	88%	90%	87%	89%

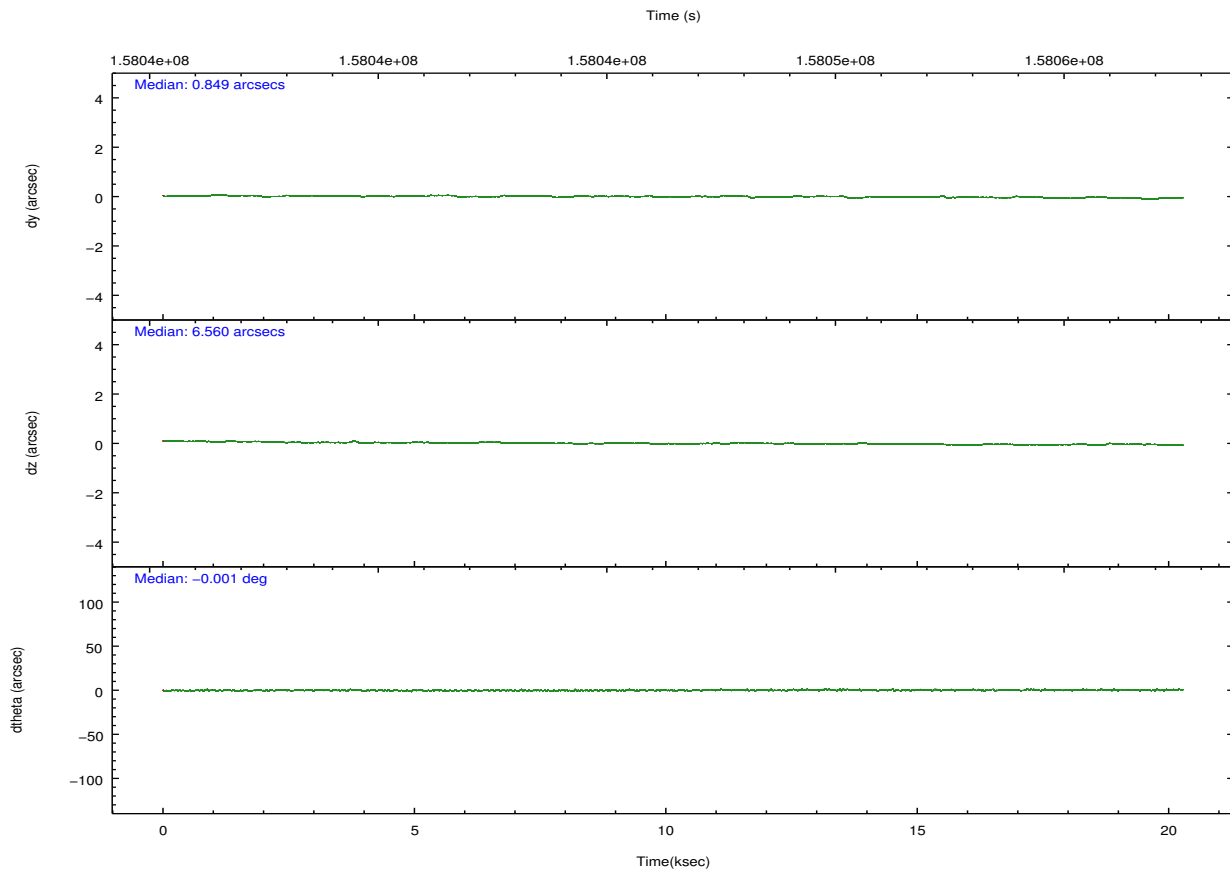
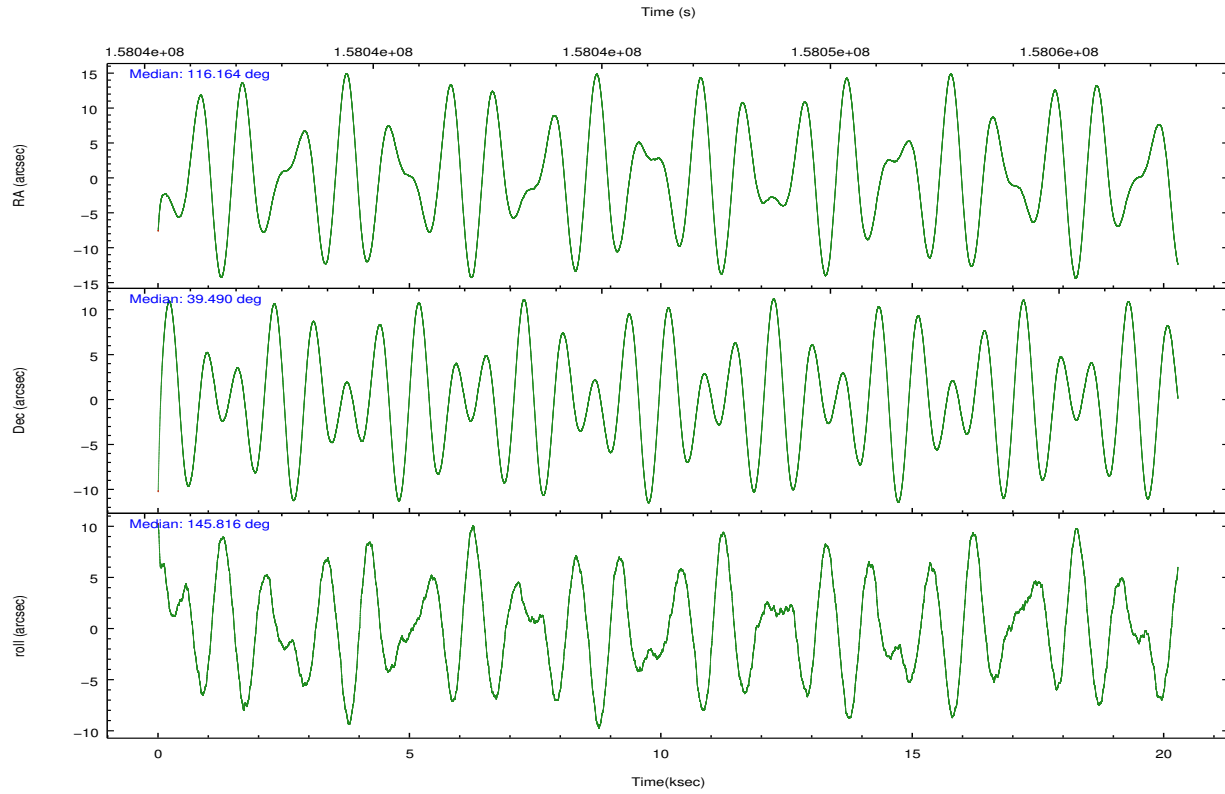
	ccd 0	ccd 1	ccd 2	ccd 3	ccd 6
grade 0 events	3635	4432	4273	6540	4632
	3%	4%	3%	6%	4%
grade 1 events	43	55	65	81	43
	0%	0%	0%	0%	0%
grade 2 events	2440	2476	2396	2441	2273
	2%	2%	2%	2%	2%
grade 3 events	1261	1312	1179	1262	1277
	1%	1%	1%	1%	1%
grade 4 events	1138	1268	1146	1247	1202
	1%	1%	1%	1%	1%
grade 5 events	3561	3832	3438	4023	3969
	3%	3%	3%	3%	3%
grade 6 events	2001	2328	1814	1953	2356
	2%	2%	1%	1%	2%
grade 7 events	83921	84377	93959	90825	94597
	85%	84%	86%	83%	85%

2.2 Compared Parameters

Parameter	Planned	Actual	Parameter	Planned	Actual
Instrument	ACIS	ACIS	Obspar format version number	7	7
Detector	ACIS-01236	ACIS-01236	Obspar file type	PREDICTED	ACTUAL
Grating	NONE	NONE	Obspar update status	NONE	UPDATED
Data mode	VFAINT	VFAINT	Number of optional ACIS chips dropped	0	0
Observation mode	POINTING	POINTING	On-chip summing requested	N	N
[deg] Pointing RA	116.199120	116.1637169410945	Subarray requested	NONE	NONE
[deg] Pointing Dec	39.487755	39.48966333743924	Alternating exposures requested	N	N
[deg] Pointing Roll	145.588612	145.8198139985199	[s] Primary exposure time	0.000000	3.1
[mm] SIM focus pos	-0.782348	-0.7809083437167272			
[mm] SIM defocus	0	0.001439871863259334			
[mm] SIM translation stage pos	-225.840463	-225.8433433320239			
[mm] SIM translation stage offset	-7.752	-7.749109670905796			
[s] Observation start time (MET)	158036588.184000	158035583.09103			
Observation start date	2003-01-04T03:02:04	2003-01-04T02:46:23			
[s] Observation end time (MET)	158056588.184000	158057395.60445			
Observation end date	2003-01-04T08:35:24	2003-01-04T08:49:55			
Read mode	TIMED	TIMED			

2.3 Aspect



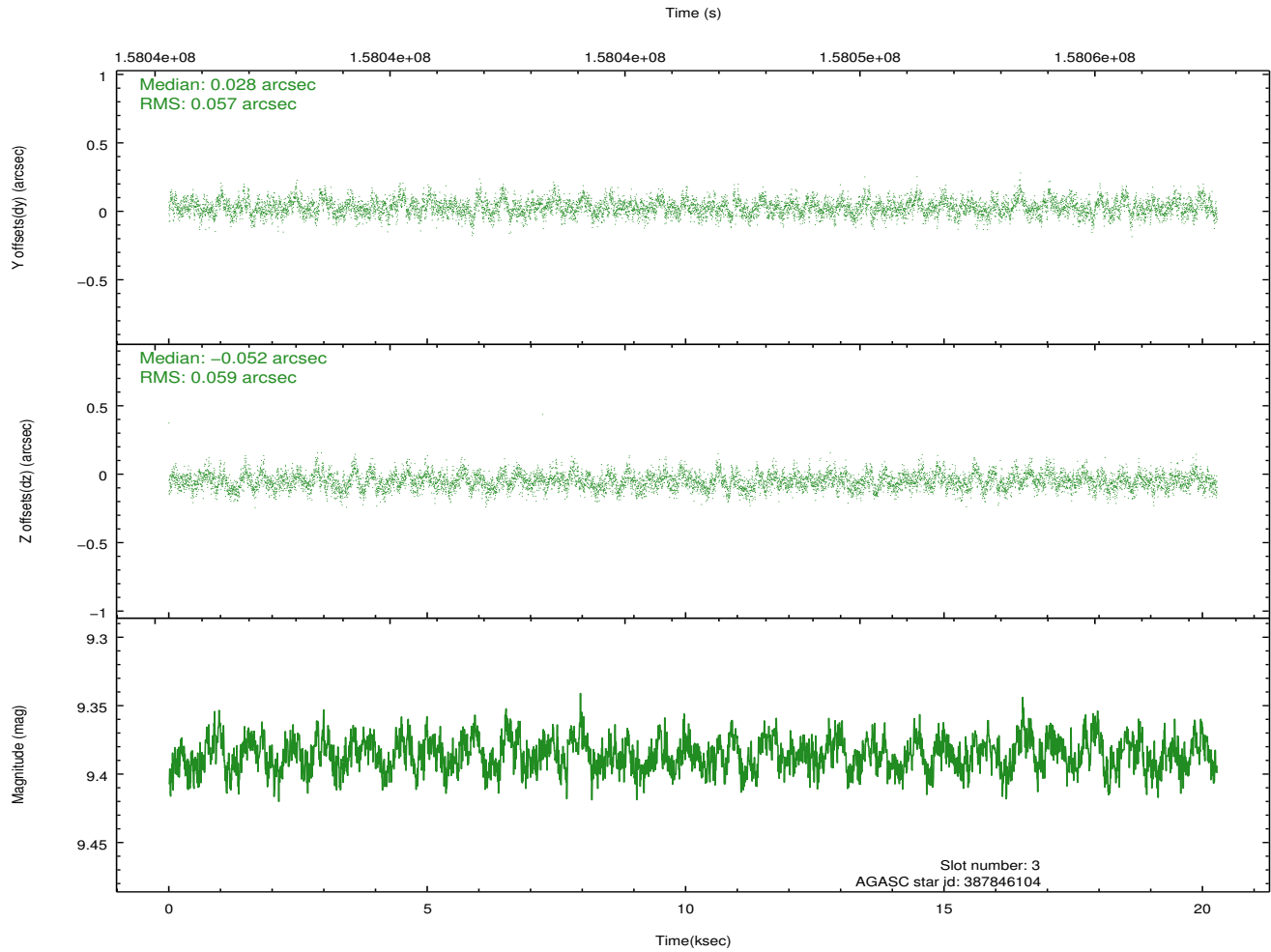
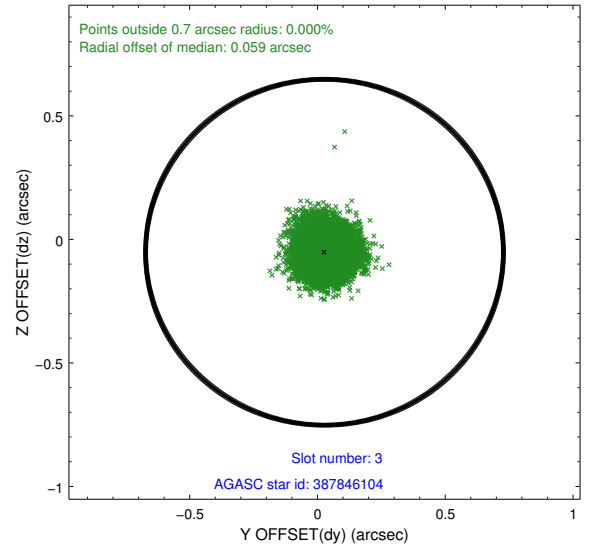
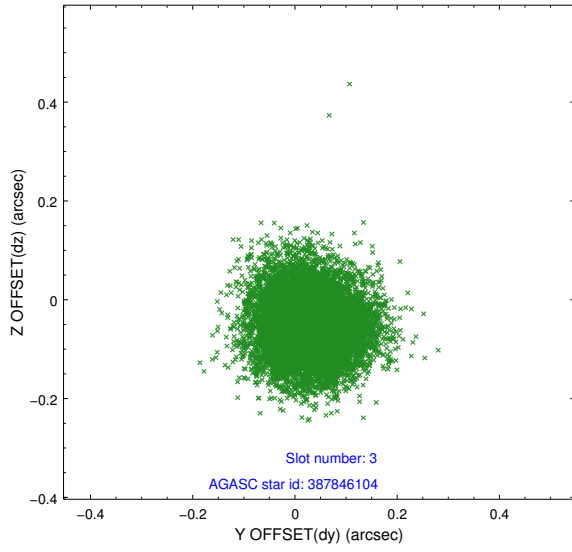


Slot Statistics

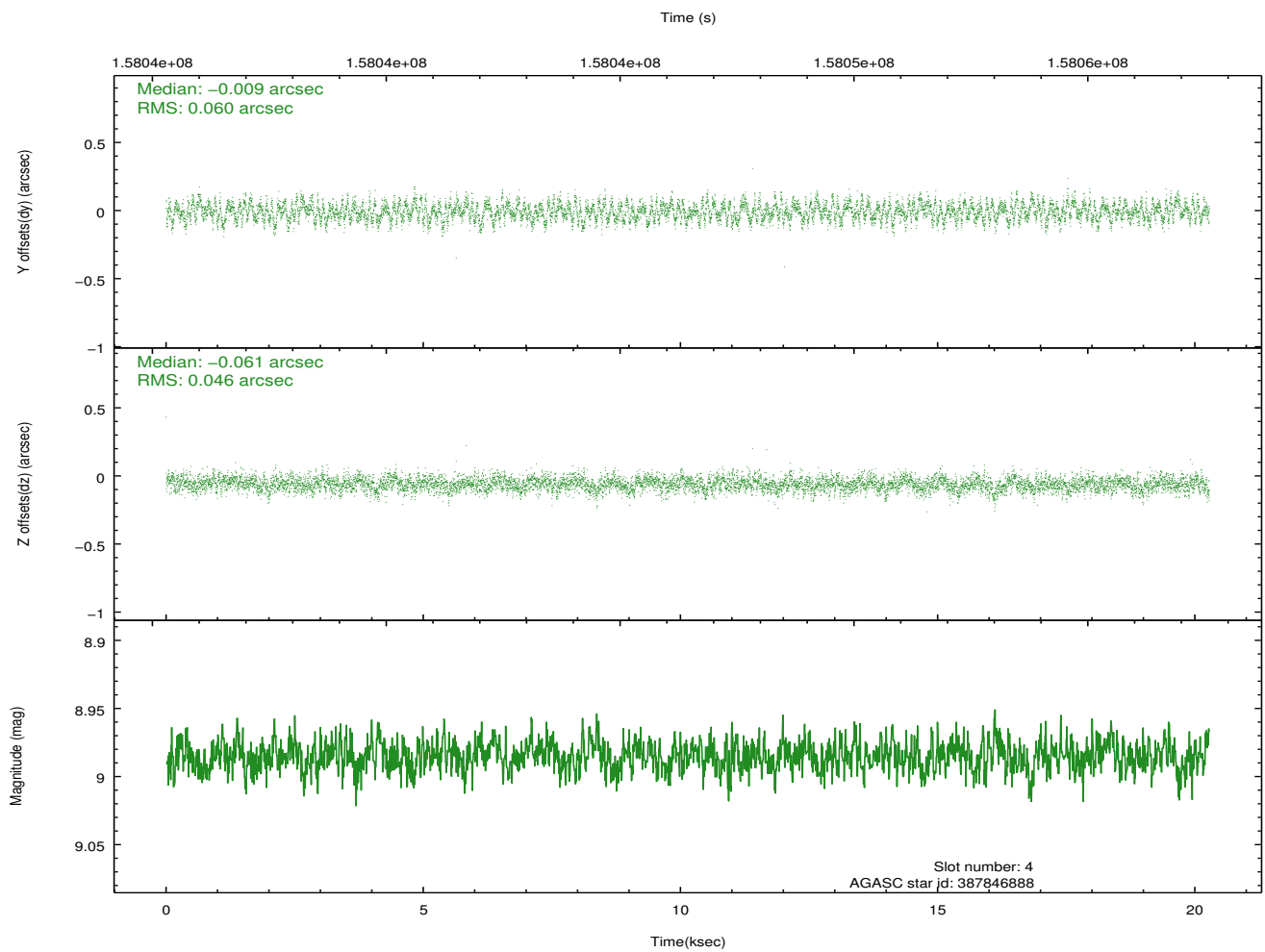
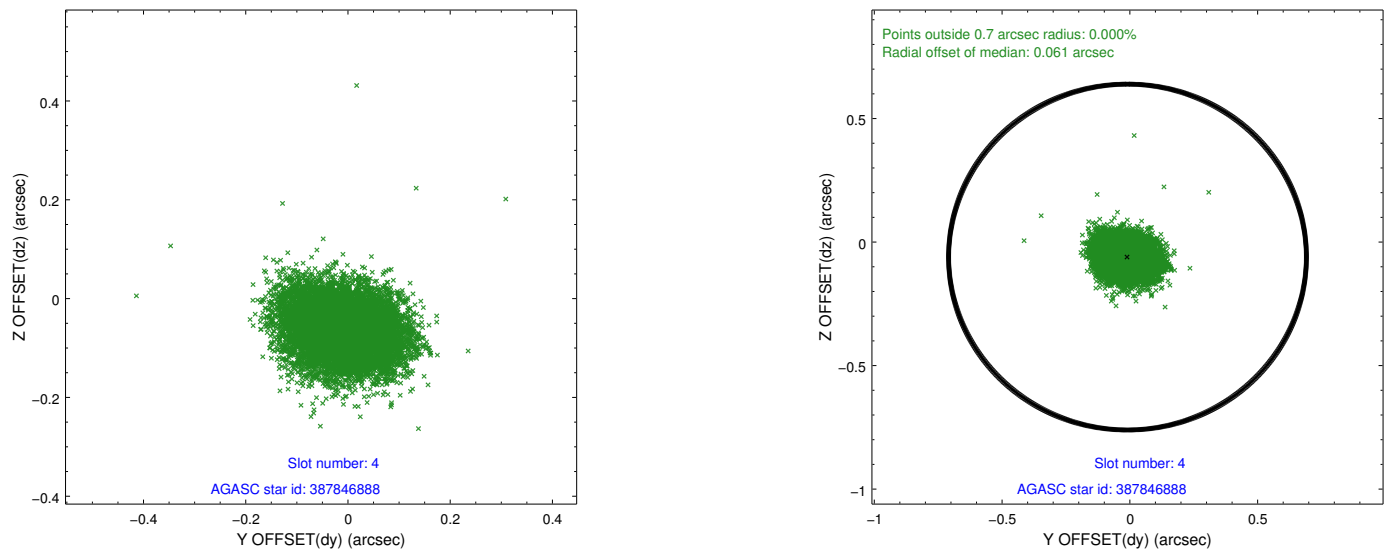
slot	status	id	mag	n_pts	med_dy	med_dz	dr1	dr2	ra	dec	mean_y	mean_z
0	FID	ACIS-I-1	7.23	4947	0.103	-0.066	0.007	0.013	0.000000	0.000000	938.95	-989.11
1	FID	ACIS-I-5	7.22	4947	-0.213	0.103	0.008	0.014	0.000000	0.000000	-1809.34	908.48
2	FID	ACIS-I-6	7.27	4947	0.019	0.035	0.007	0.012	0.000000	0.000000	404.26	1553.09
3	GUIDE	387846104	9.39	9891	0.028	-0.052	0.087	0.140	115.792368	39.298643	551.52	1200.16
4	GUIDE	387846888	8.99	9891	-0.009	-0.061	0.080	0.129	116.366299	38.714079	-1961.36	2032.29
5	GUIDE	388371256	9.03	9887	0.017	0.010	0.073	0.115	116.958551	39.618125	-1467.35	-1584.16
6	GUIDE	388381032	9.93	9874	0.016	0.095	0.142	0.221	117.226747	39.682641	-1943.16	-2201.18
7	GUIDE	388381184	9.27	9875	-0.054	0.005	0.092	0.149	115.796137	39.415707	779.14	845.51

2.4 Star Slots

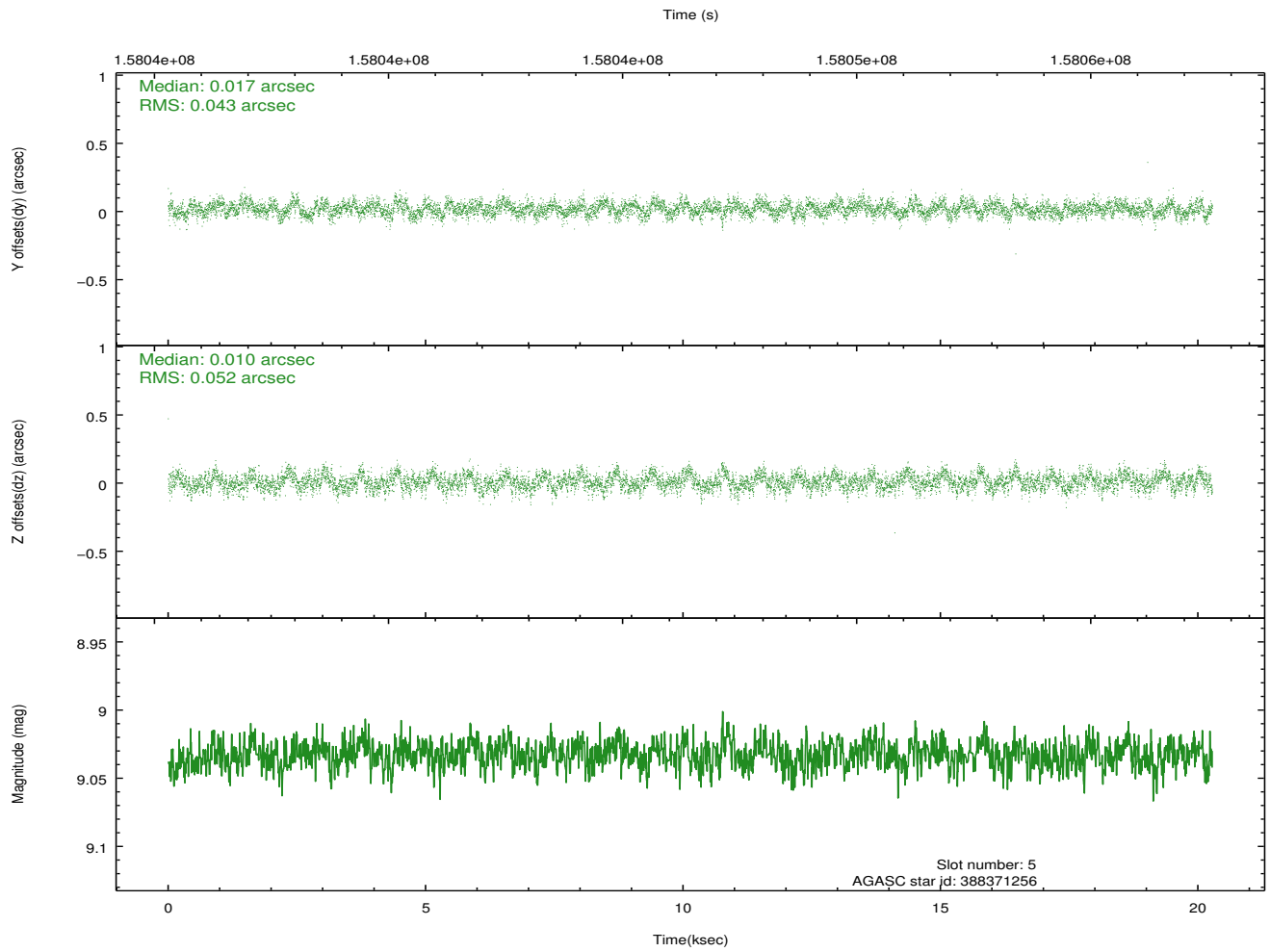
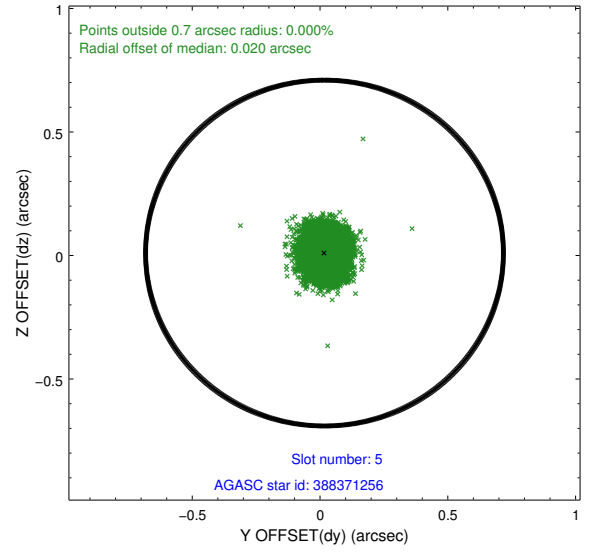
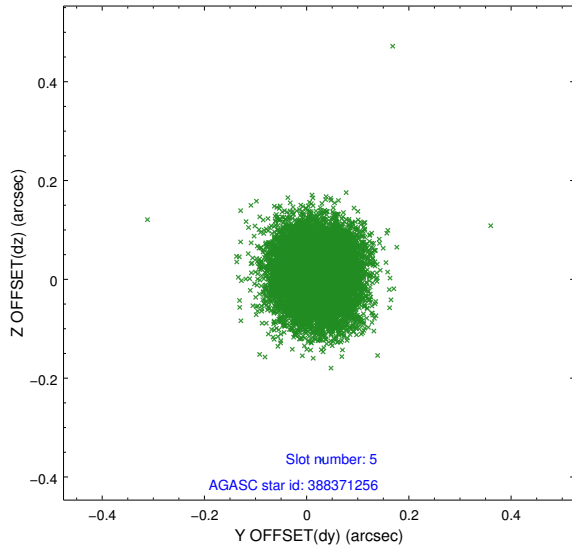
2.4.1 Slot 3



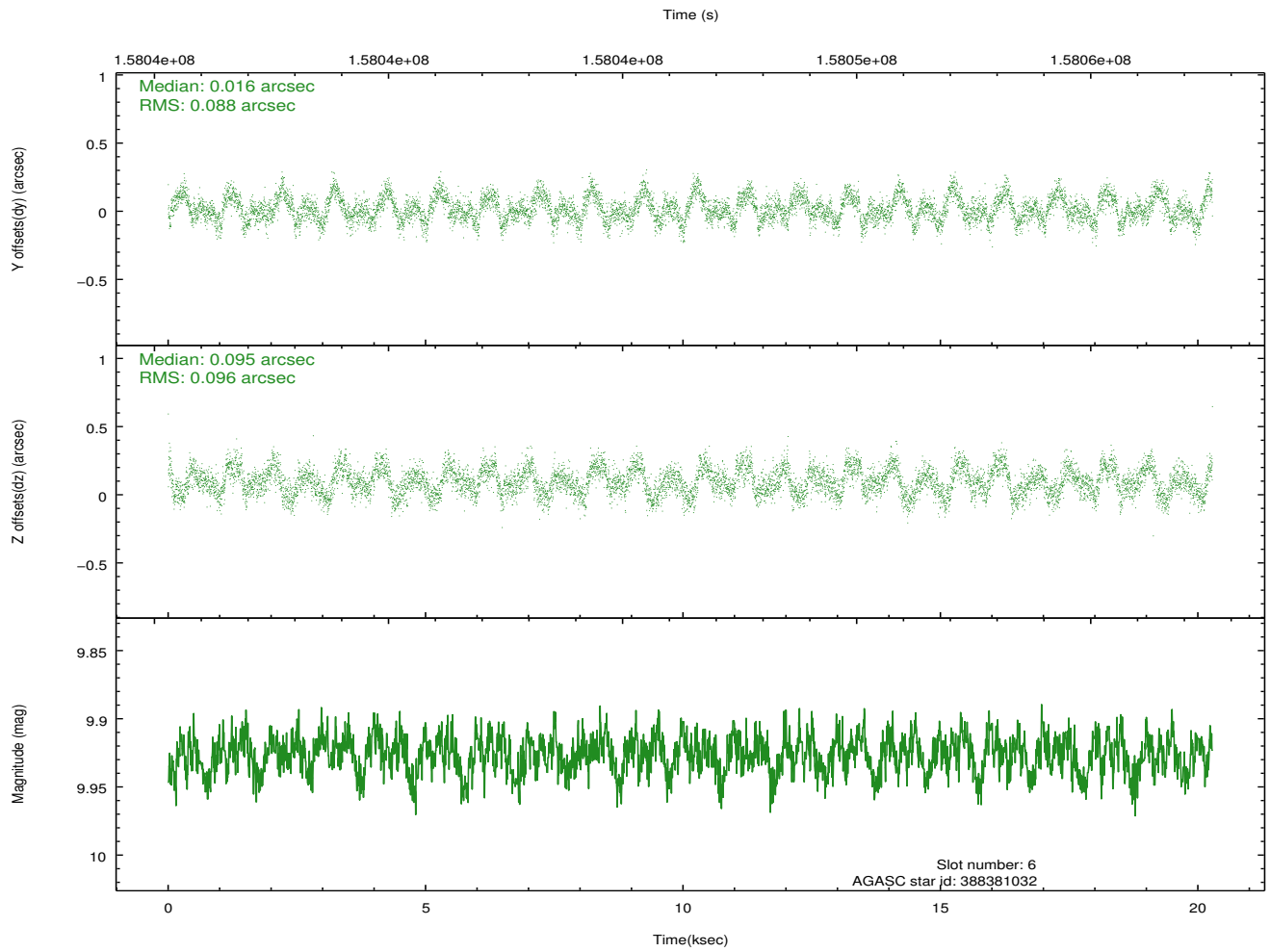
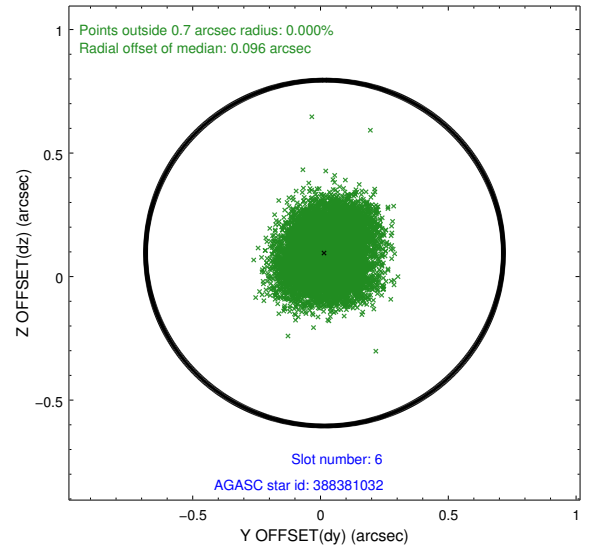
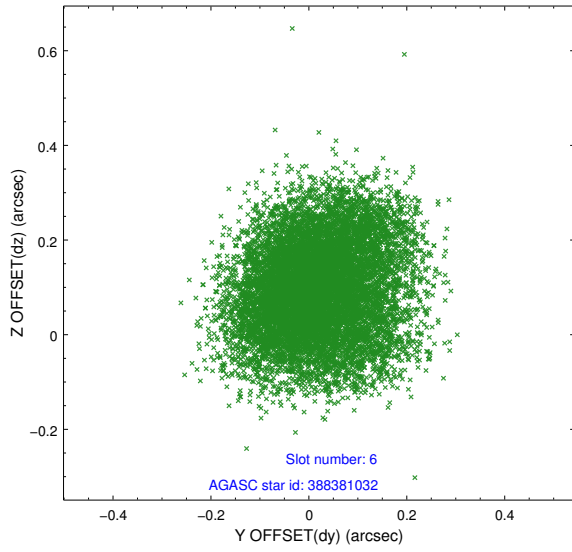
2.4.2 Slot 4



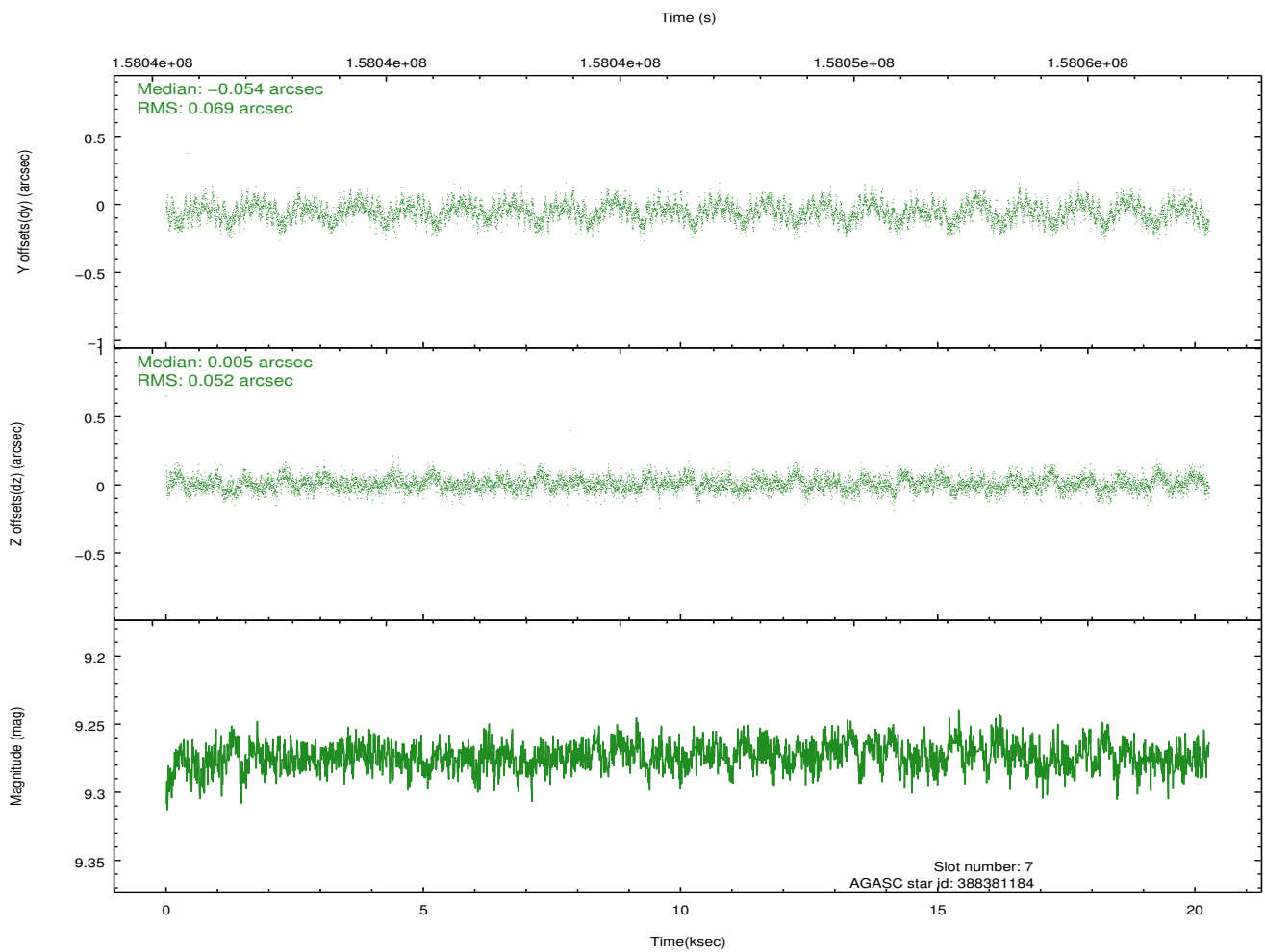
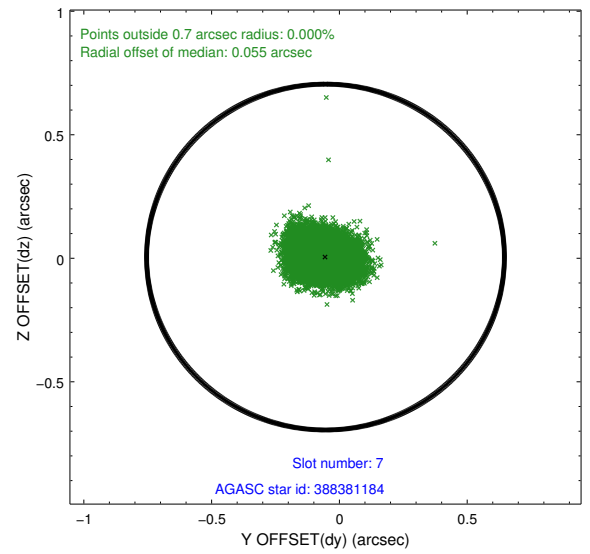
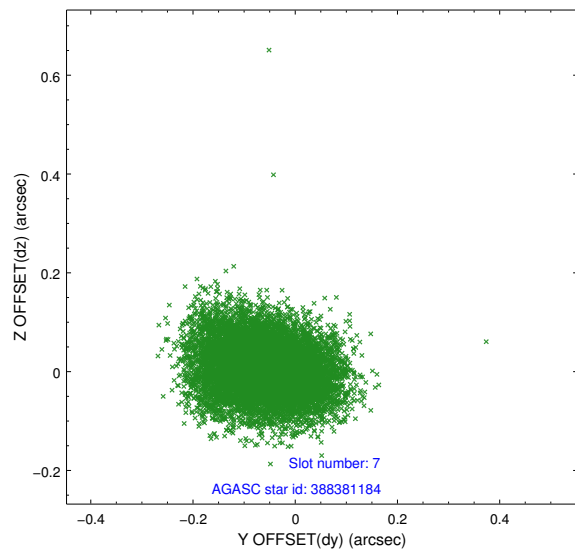
2.4.3 Slot 5



2.4.4 Slot 6

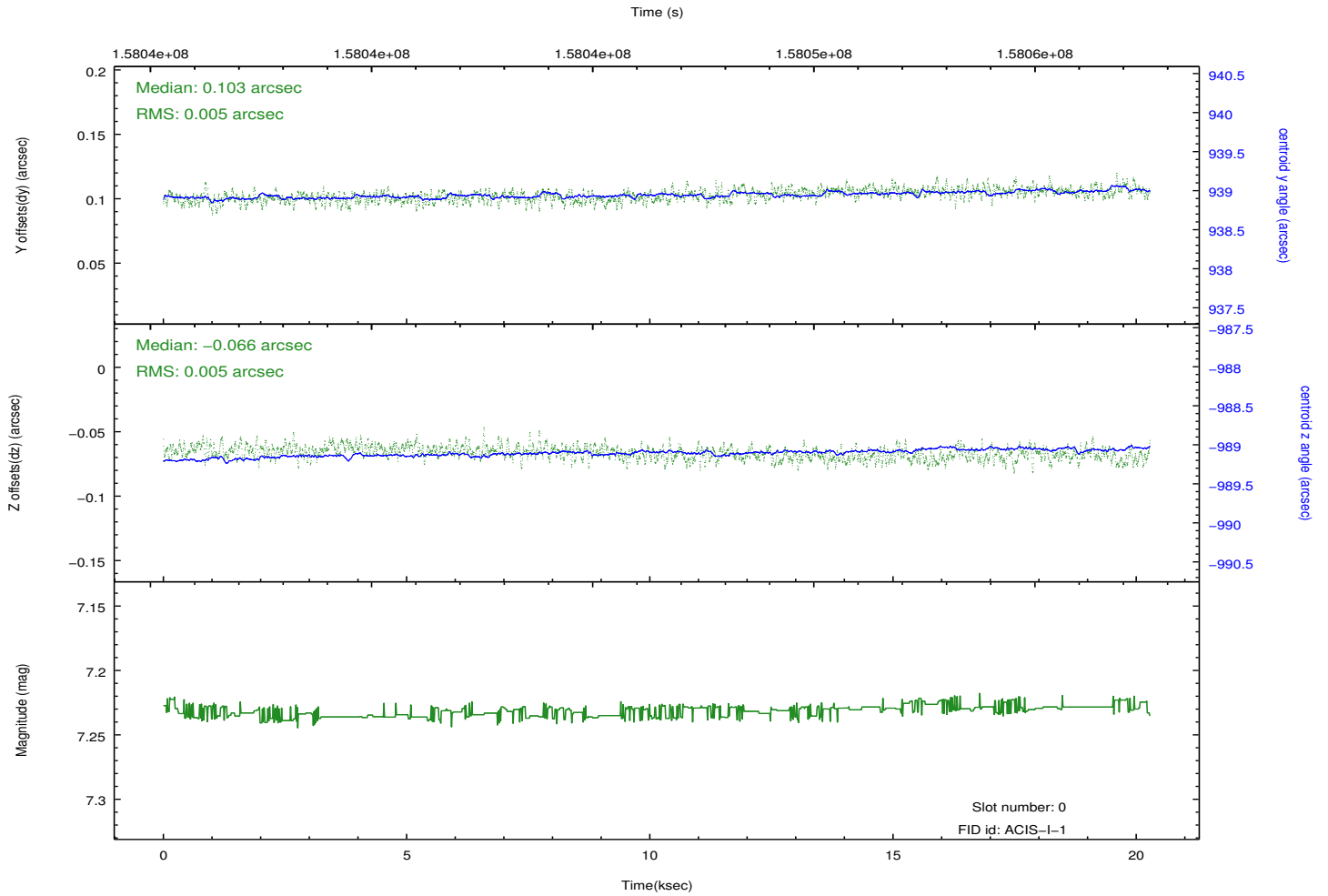
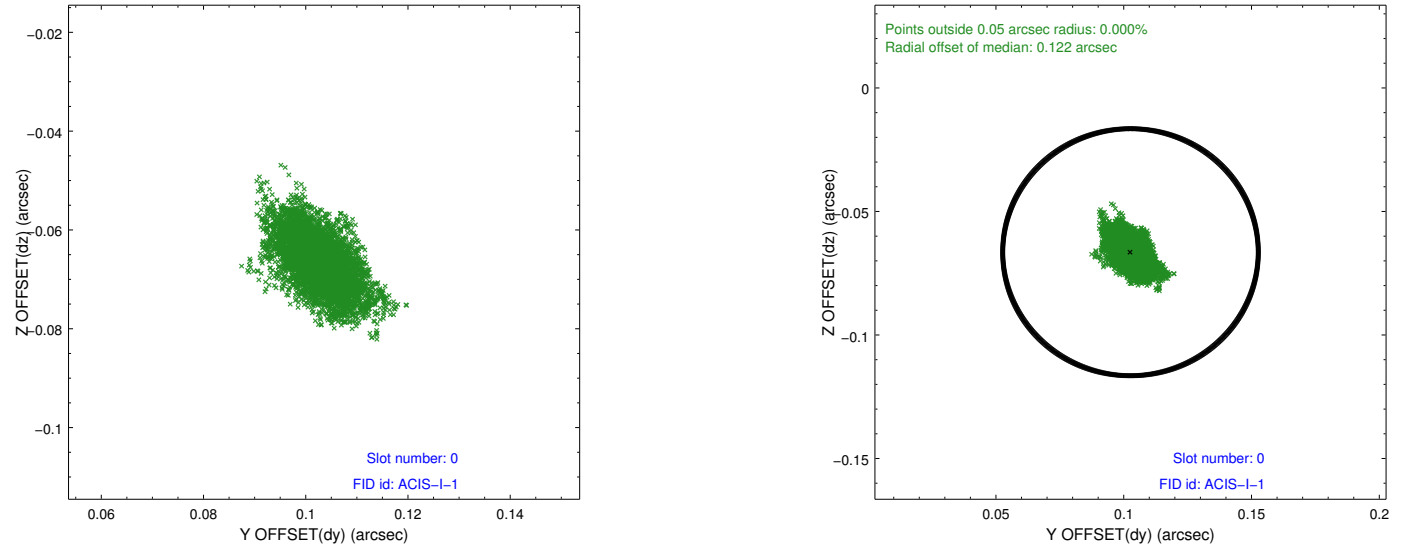


2.4.5 Slot 7

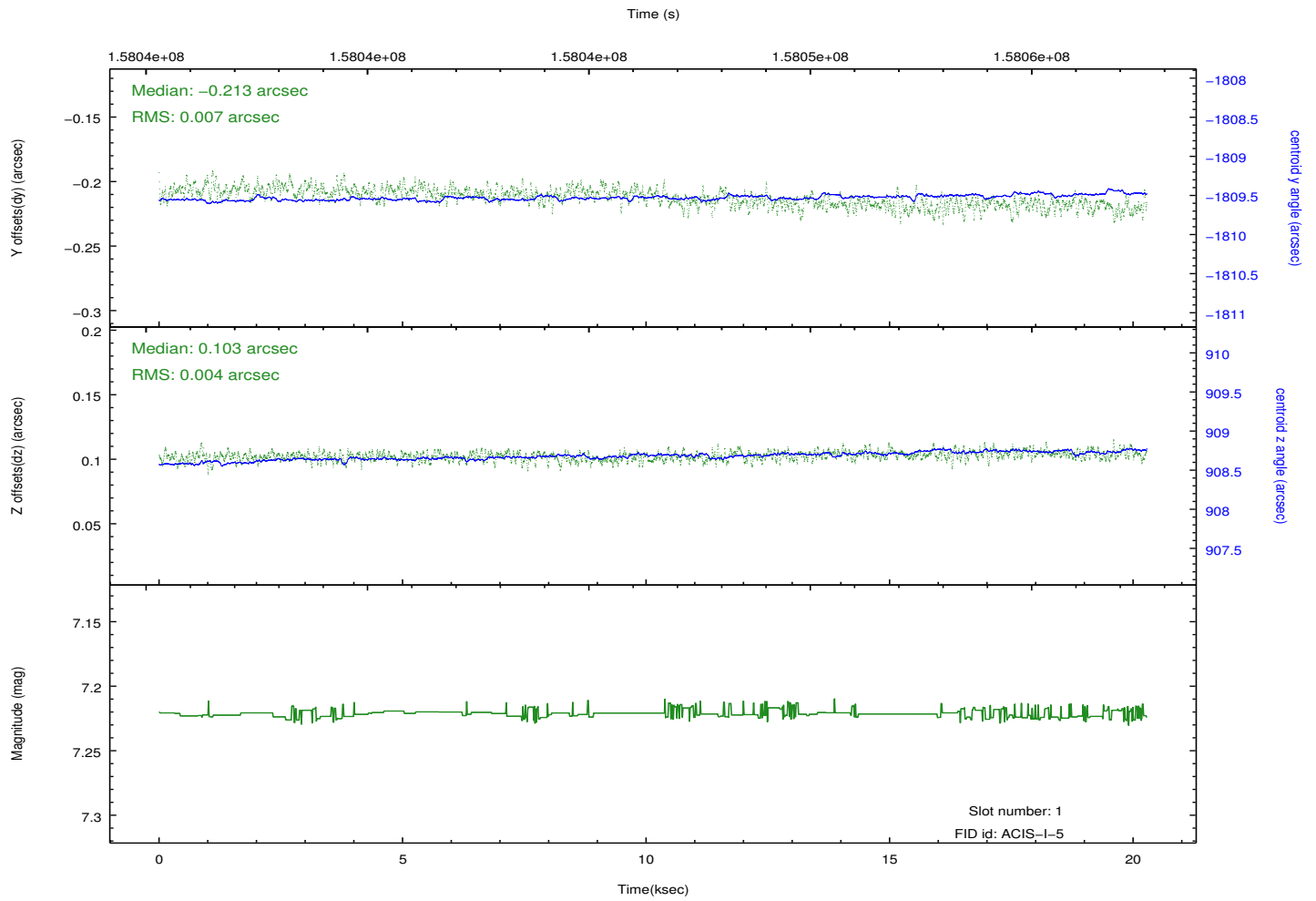
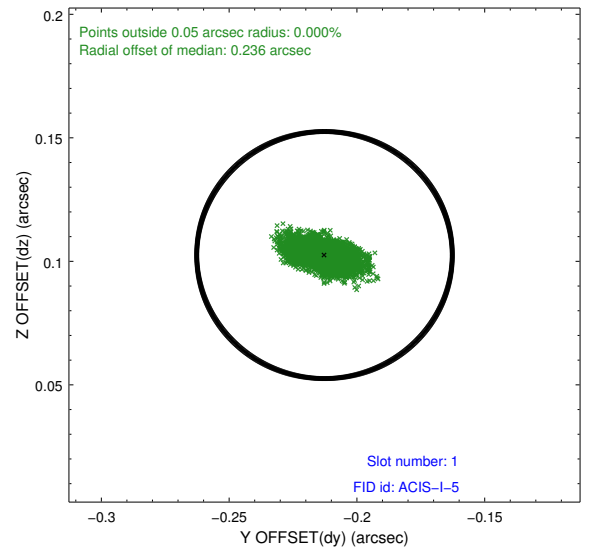
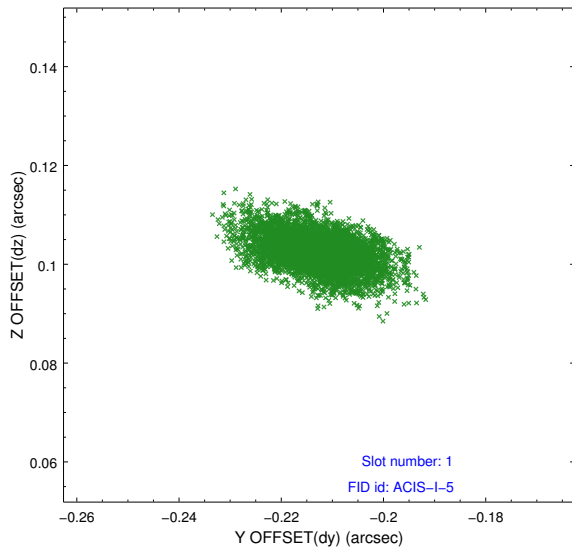


2.5 FID Slots

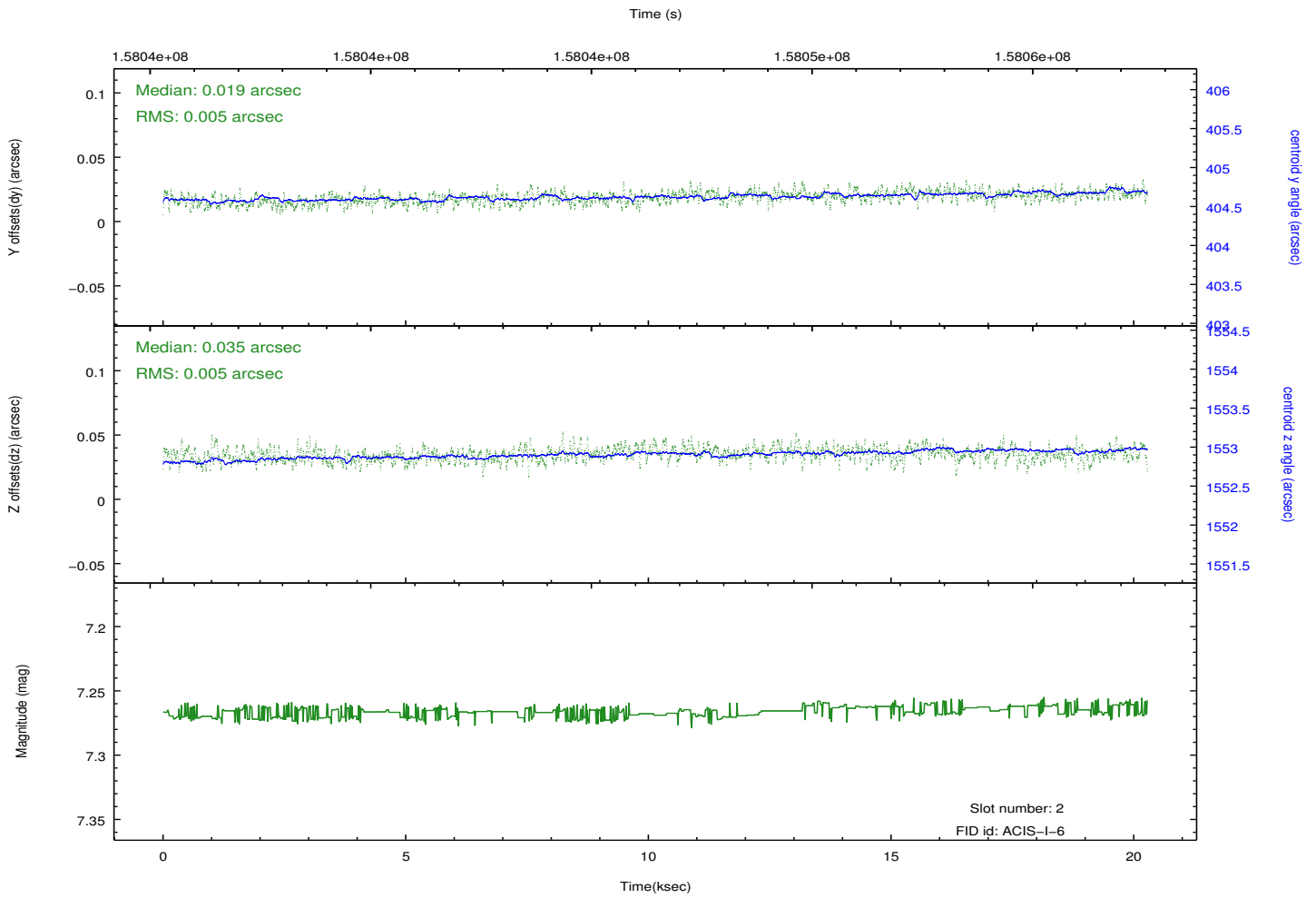
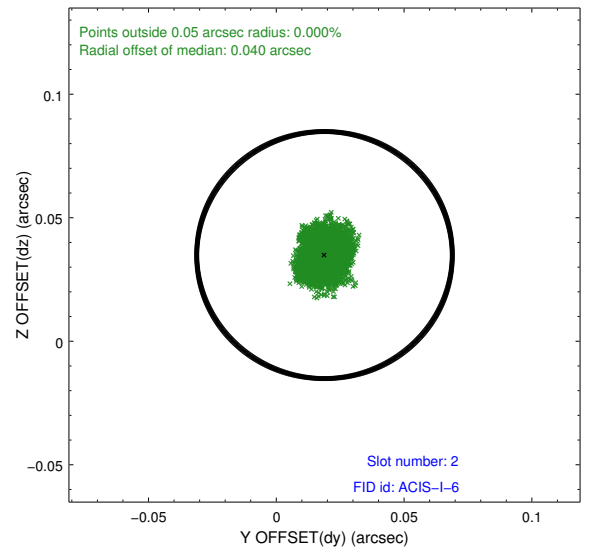
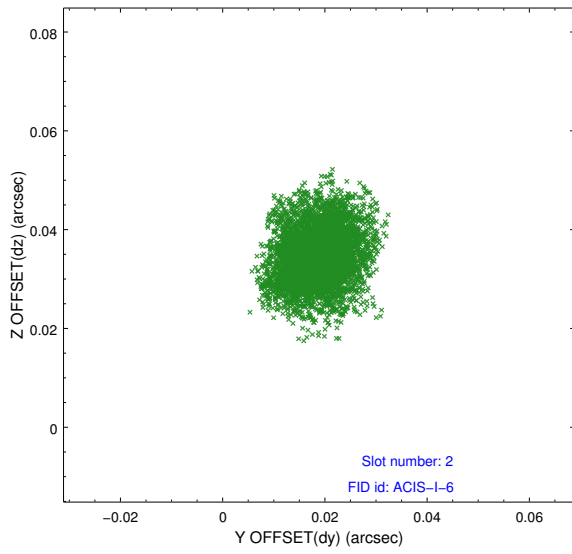
2.5.1 Slot 0



2.5.2 Slot 1



2.5.3 Slot 2



A Summary

A.1 Status

V&V Scientist	Jen Lauer
V&V Date (YYYY-MM-DD)	2012.11.01
V&V Edition	1
V&V Disposition and Status	OK
V&V Charge Time	20.122

A.2 Comments