

V&V Reference Report

L2 ASCDS Version : 8.4.5

Observation 3595 - L2 Version 3
Chandra X-Ray Center

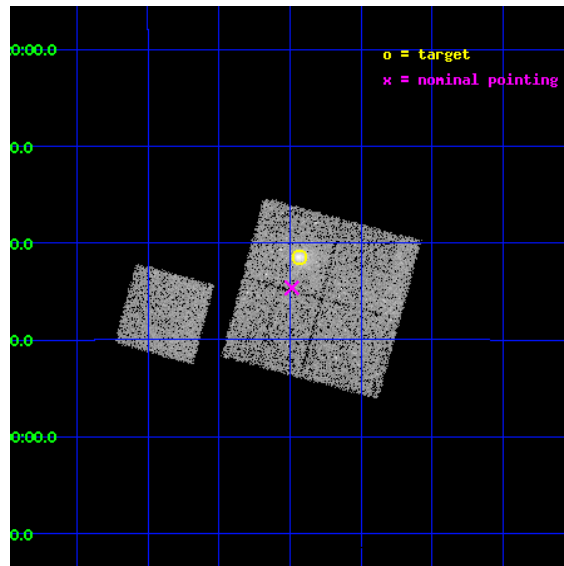
L2 Processing Date : Nov 5 2012

Contents

1	Front	2
2	OBI	3
2.1	OBI	3
2.1.1	Images	3
2.1.2	Bias	3
2.1.3	Parameters	4
2.1.4	Events	4
2.2	Compared Parameters	5
2.3	Aspect	6
2.4	Star Slots	9
2.4.1	Slot 3	9
2.4.2	Slot 4	10
2.4.3	Slot 5	11
2.4.4	Slot 6	12
2.4.5	Slot 7	13
2.5	FID Slots	14
2.5.1	Slot 0	14
2.5.2	Slot 1	15
2.5.3	Slot 2	16
A	Summary	17
A.1	Status	17
A.2	Comments	17

1 Front

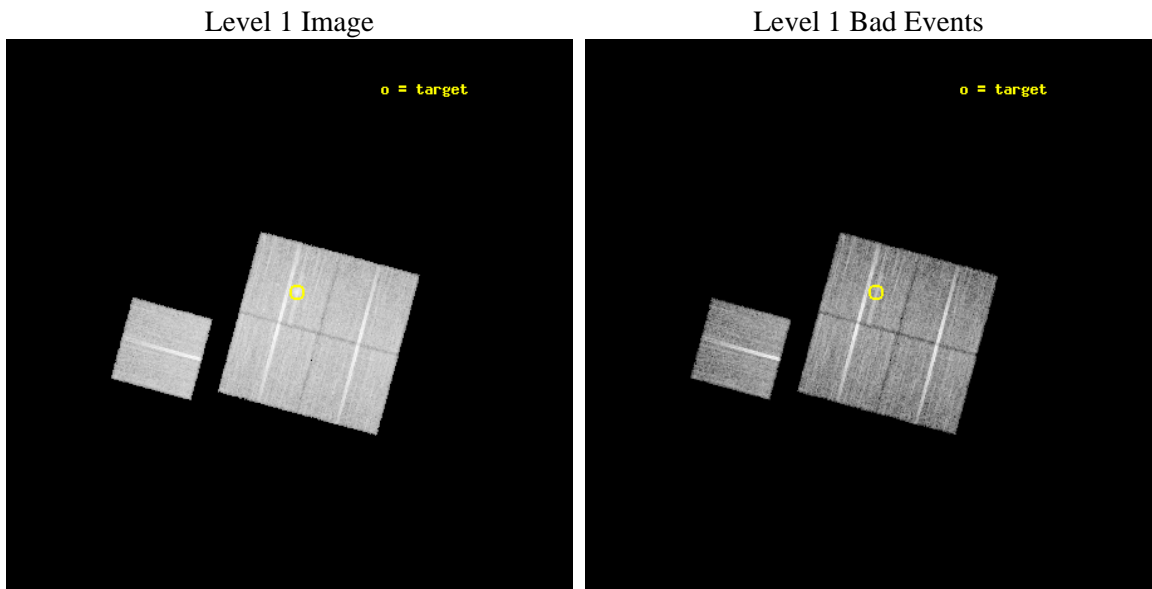
seq_num	800316	Sequence number
obs_id	3595	Observation id
title	X-RAY/SZ DETERMINATION OF COSMOLOGICAL PARAMETERS	Proposal title
observer	DR. LEON VANSPEYBROECK	Principal investigator
object	MACS-J2129.4-0741	Source name
dtcycle	0	
cycle	P	events from which exps? Prim/Second/Both
ra_targ	322.359167	Observer's specified target RA [deg]
dec_targ	-7.691	Observer's specified target Dec [deg]
ra_nom	322.37157868008	Nominal RA [deg]
dec_nom	-7.7439292735321	Nominal Dec [deg]
roll_nom	285.19610272767	Nominal Roll [deg]
revision	3	Processing version of data
ontime	20137.558981001	Sum of GTIs [s]
livetime	19874.446947859	Livetime [s]
ontime0	20140.699961245	Sum of GTIs [s]
ontime1	20140.699961245	Sum of GTIs [s]
ontime2	20140.699961245	Sum of GTIs [s]
ontime3	20137.558981001	Sum of GTIs [s]
ontime6	20140.699961245	Sum of GTIs [s]
l2events	49493	Number of level 2 events



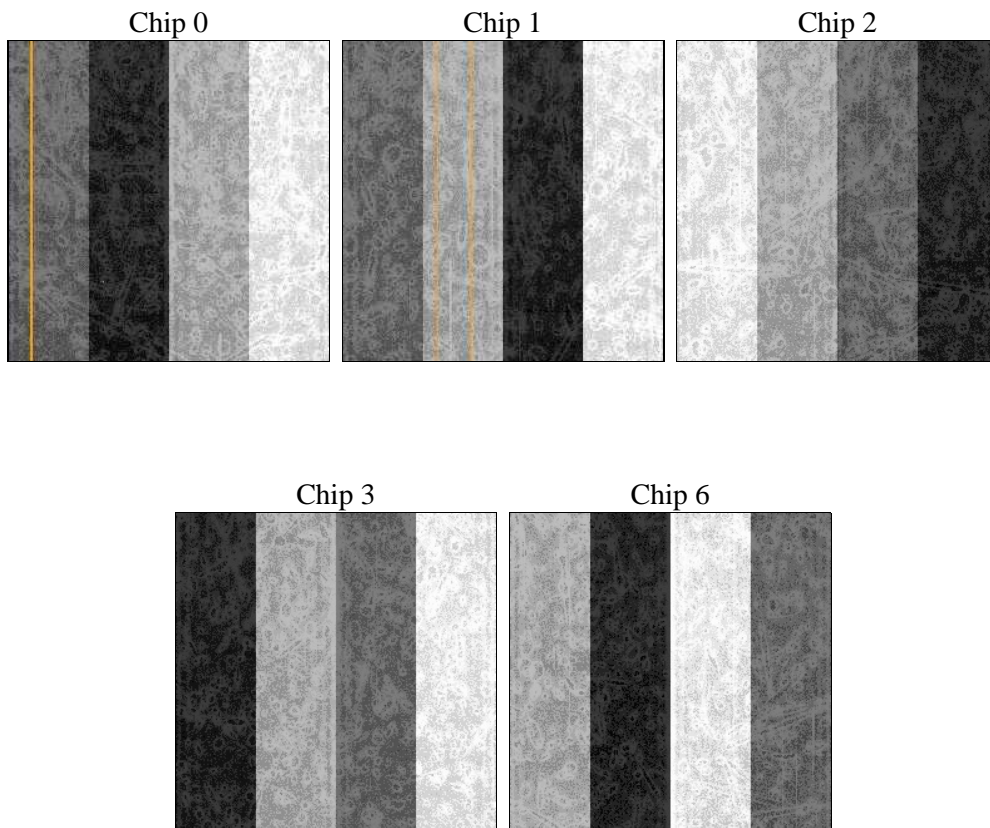
2 OBI

2.1 OBI

2.1.1 Images



2.1.2 Bias



2.1.3 Parameters

obi_num	0	Obi number	sched_exp_time	20000.000000	[s] Scheduled observation exposure time
ascdsver	8.4.5	Processing system revision	ontime	20137.558981001	Sum of GTIs [s]
caldsver	4.5.2	 	ontime0	20140.699961245	Sum of GTIs [s]
date	2012-11-05T19:47:38	Date and time of file creation	ontime1	20140.699961245	Sum of GTIs [s]
revision	3	Processing version of data	ontime2	20140.699961245	Sum of GTIs [s]
			ontime3	20137.558981001	Sum of GTIs [s]
			ontime6	20140.699961245	Sum of GTIs [s]
			l1events	559936	Number of level 1 events

2.1.4 Events

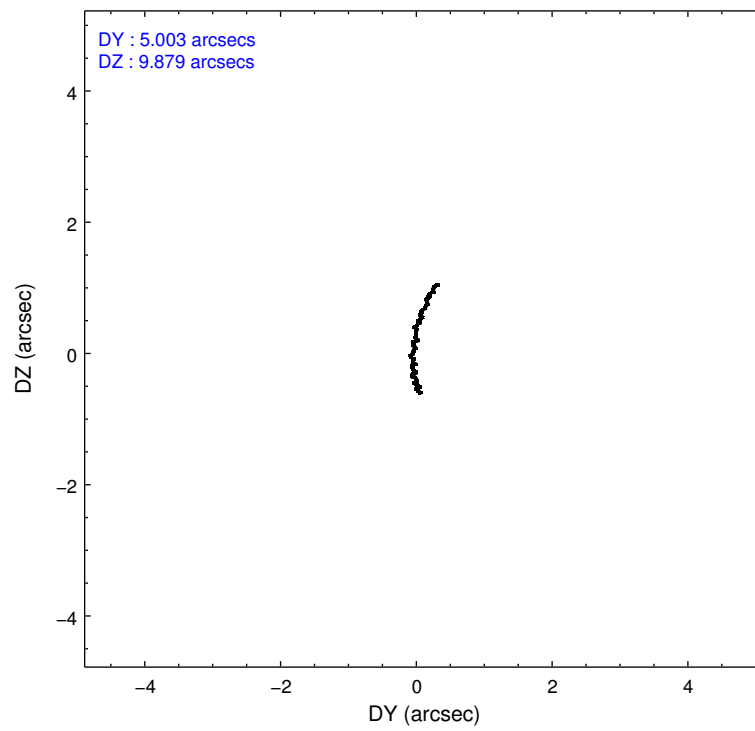
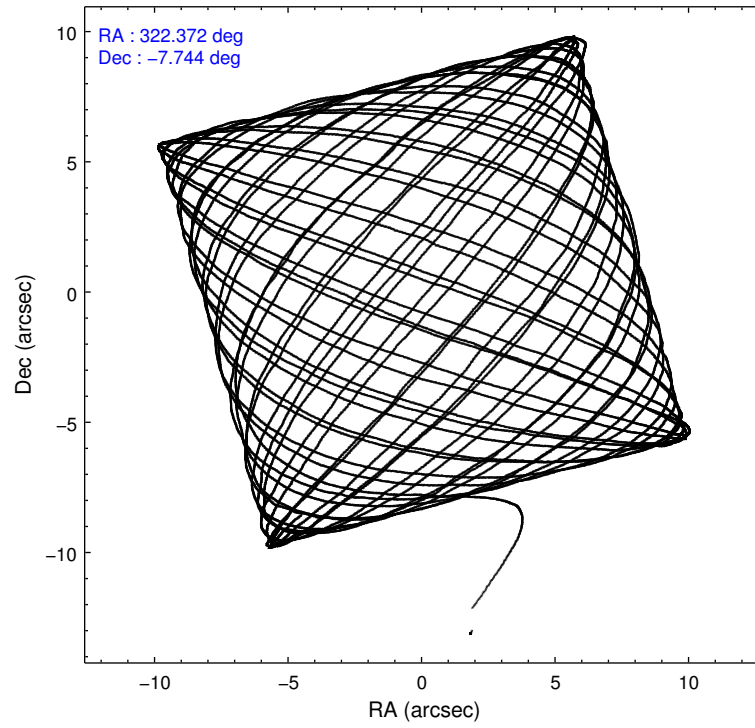
	ccd 0	ccd 1	ccd 2	ccd 3	ccd 6
level 1 events	105752	102733	119042	119885	112524
rejected events	94687	90519	108142	105739	101534
rejected %	89%	88%	90%	88%	90%

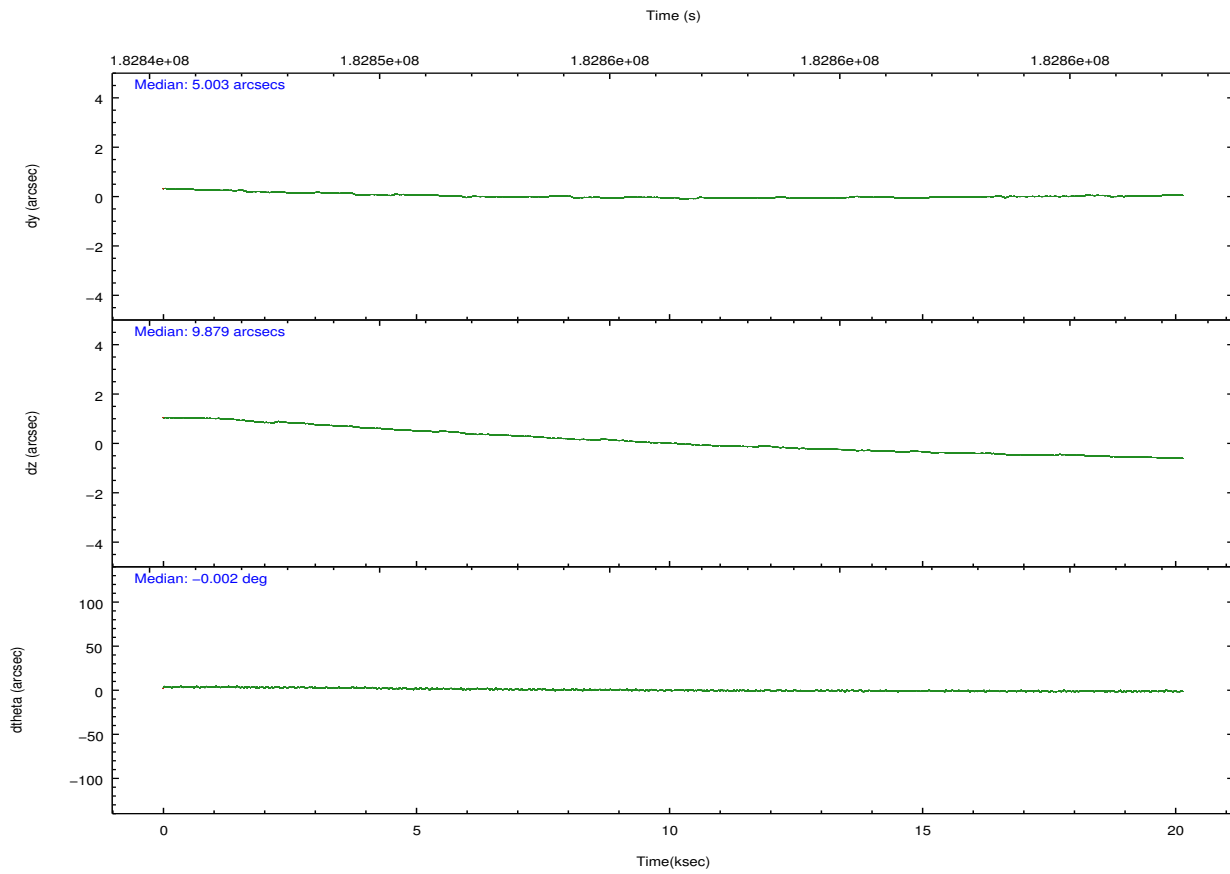
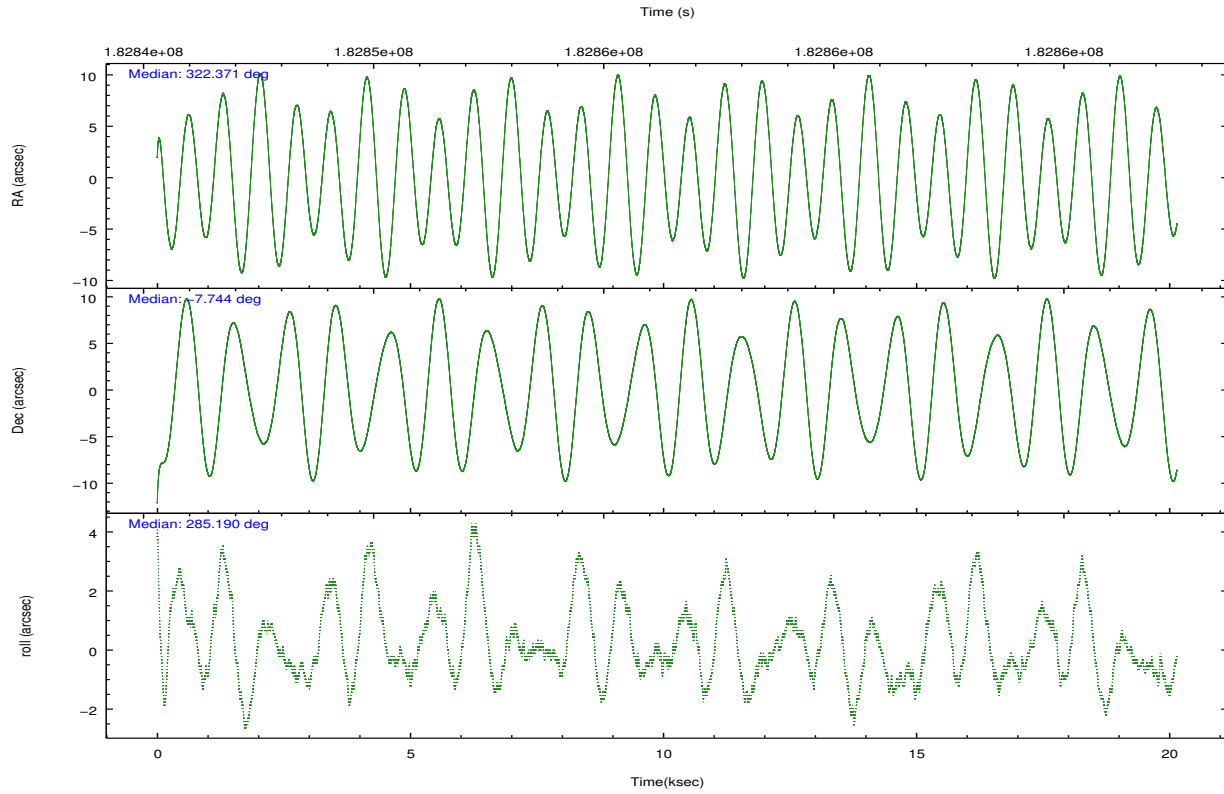
	ccd 0	ccd 1	ccd 2	ccd 3	ccd 6
grade 0 events	3925	4507	3958	6869	3777
	3%	4%	3%	5%	3%
grade 1 events	39	33	59	78	47
	0%	0%	0%	0%	0%
grade 2 events	2638	2638	2623	2657	2401
	2%	2%	2%	2%	2%
grade 3 events	1311	1408	1240	1364	1238
	1%	1%	1%	1%	1%
grade 4 events	1233	1447	1235	1323	1344
	1%	1%	1%	1%	1%
grade 5 events	4014	4267	3873	4468	4409
	3%	4%	3%	3%	3%
grade 6 events	2199	2440	2056	2165	2446
	2%	2%	1%	1%	2%
grade 7 events	90393	85993	103998	100961	96862
	85%	83%	87%	84%	86%

2.2 Compared Parameters

Parameter	Planned	Actual	Parameter	Planned	Actual
Instrument	ACIS	ACIS	Obspar format version number	7	7
Detector	ACIS-01236	ACIS-01236	Obspar file type	PREDICTED	ACTUAL
Grating	NONE	NONE	Obspar update status	NONE	UPDATED
Data mode	VFAINT	VFAINT	Number of optional ACIS chips dropped	0	0
Observation mode	POINTING	POINTING	On-chip summing requested	N	N
[deg] Pointing RA	322.351897	322.3715786800756	Subarray requested	NONE	NONE
[deg] Pointing Dec	-7.724680	-7.74392927353212	Alternating exposures requested	N	N
[deg] Pointing Roll	284.984762	285.1961027276695	[s] Primary exposure time	0.000000	3.1
[mm] SIM focus pos	-0.782348	-0.7809083437167272			
[mm] SIM defocus	0	0.001439871863259334			
[mm] SIM translation stage pos	-225.840463	-225.8458576473255			
[mm] SIM translation stage offset	-7.752	-7.746595355604228			
[s] Observation start time (MET)	182846447.184000	182845291.45575			
Observation start date	2003-10-18T06:39:43	2003-10-18T06:21:31			
[s] Observation end time (MET)	182866447.184000	182867055.28168			
Observation end date	2003-10-18T12:13:03	2003-10-18T12:24:15			
Read mode	TIMED	TIMED			

2.3 Aspect



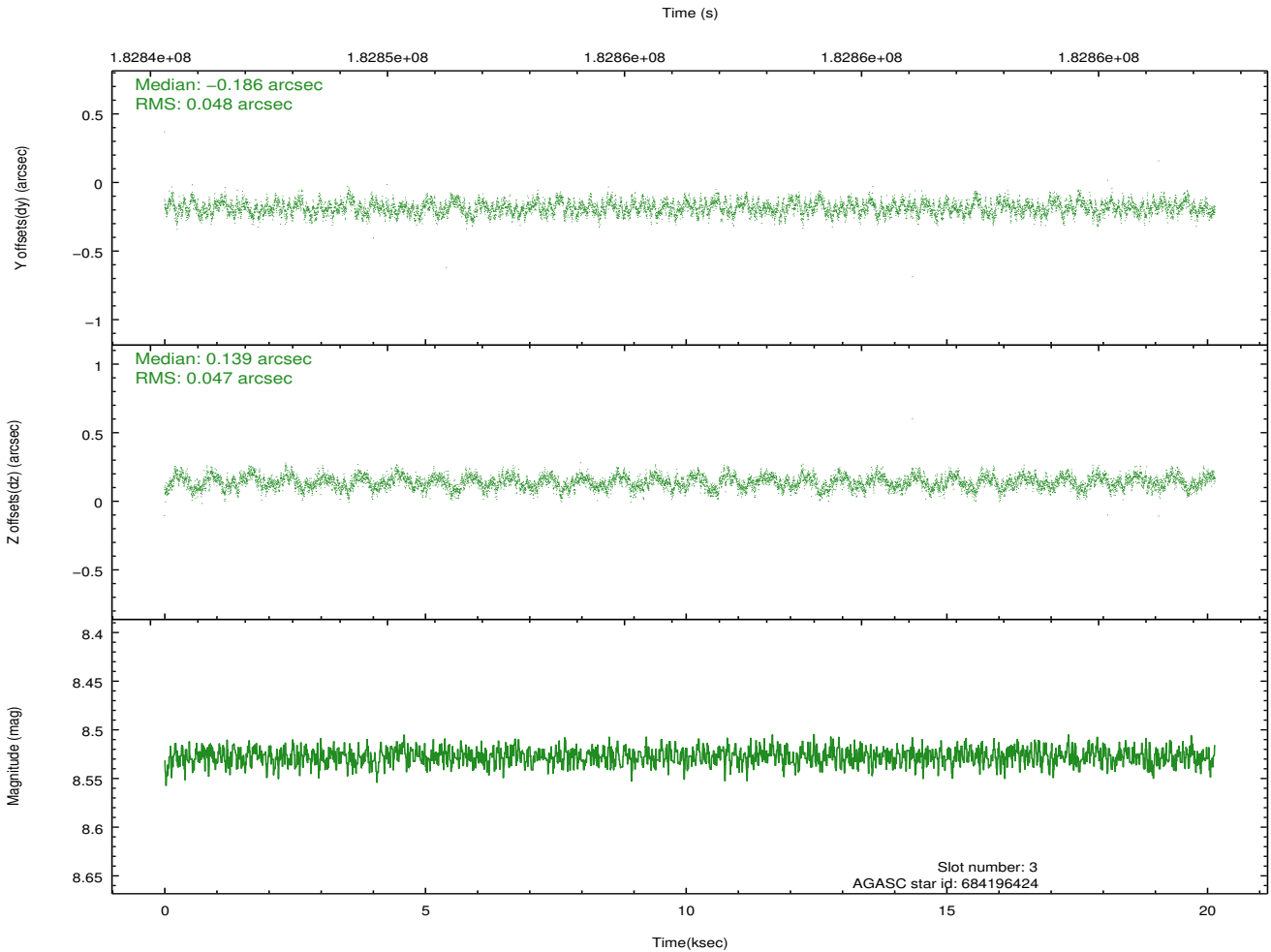
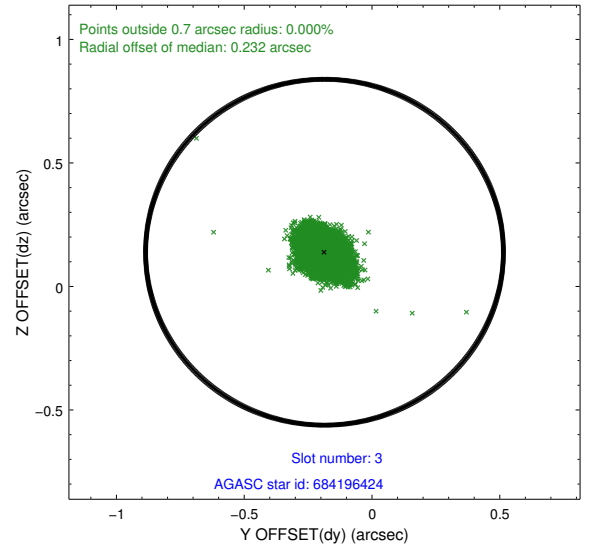
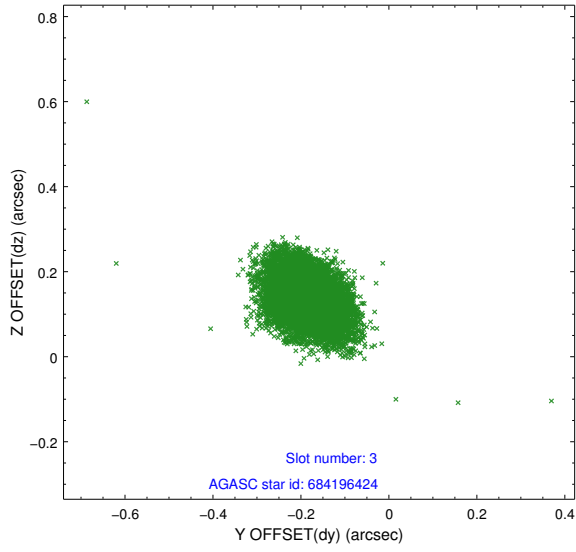


Slot Statistics

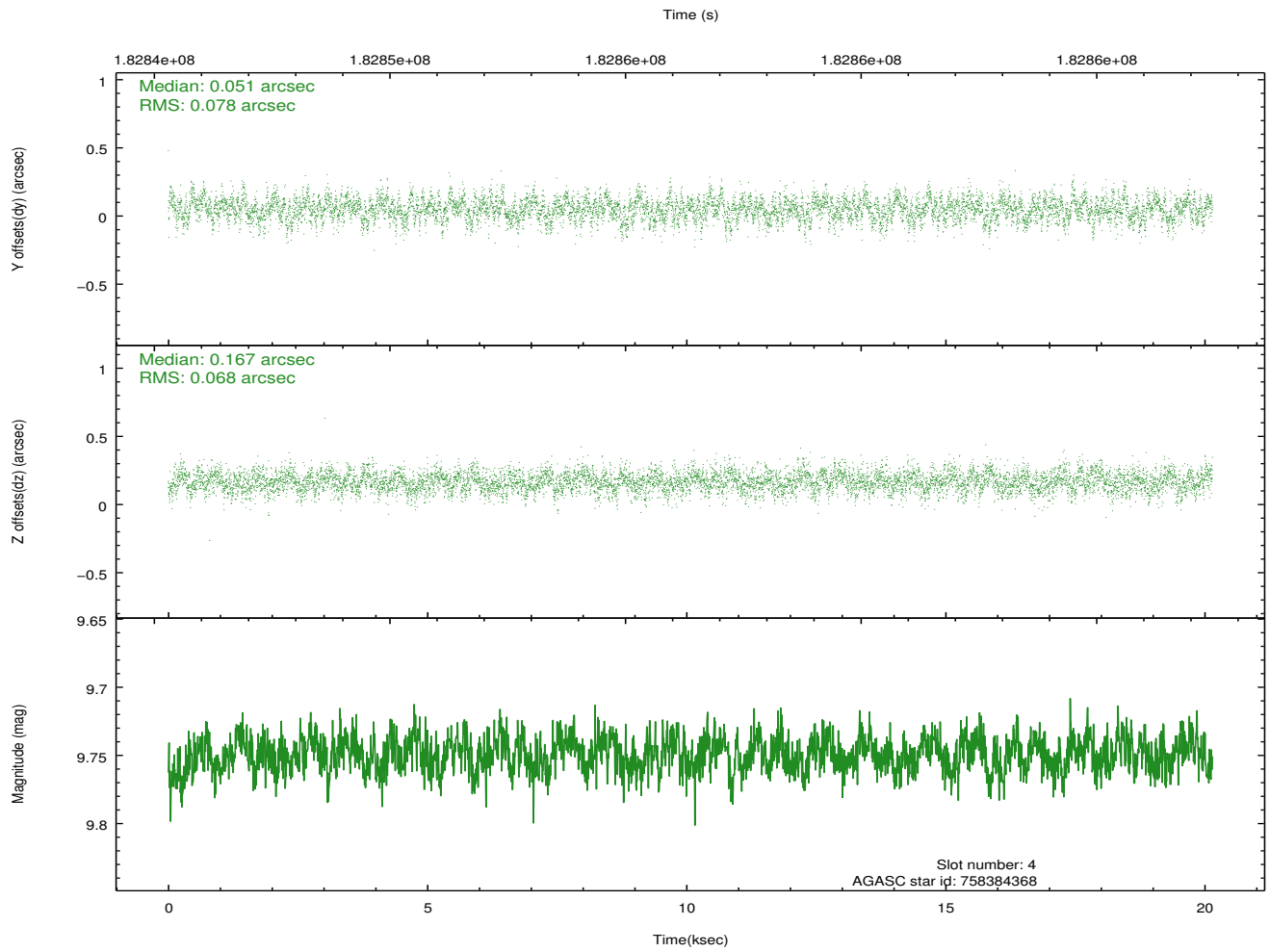
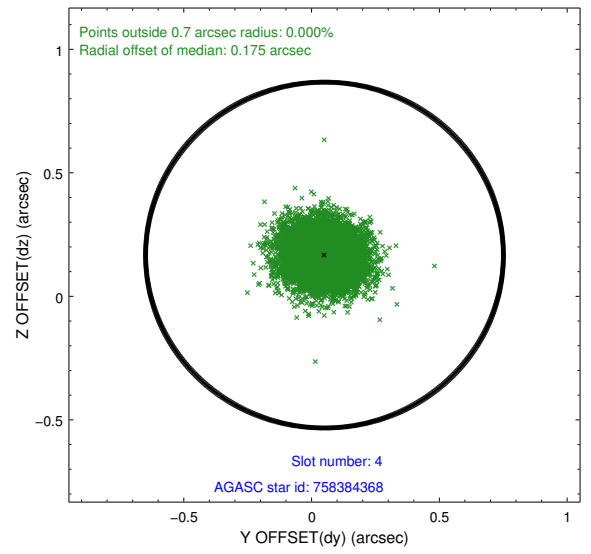
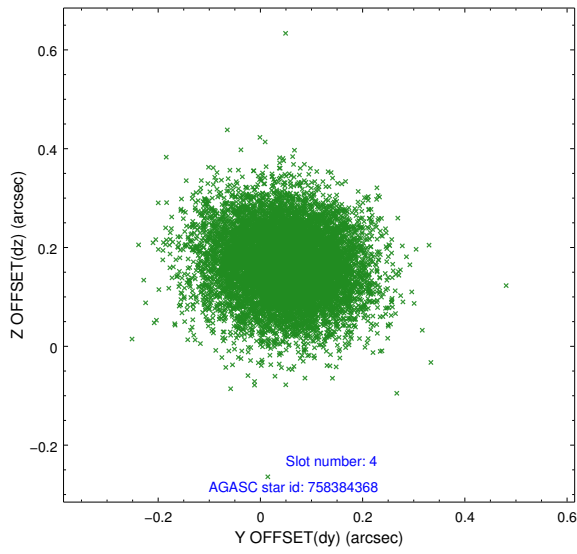
slot	status	id	mag	n_pts	med_dy	med_dz	dr1	dr2	ra	dec	mean_y	mean_z
0	FID	ACIS-I-1	7.23	4914	0.078	-0.061	0.017	0.041	0.000000	0.000000	934.63	-992.55
1	FID	ACIS-I-5	7.22	4915	-0.235	0.069	0.010	0.026	0.000000	0.000000	-1813.68	904.97
2	FID	ACIS-I-6	7.24	4915	0.065	0.063	0.012	0.027	0.000000	0.000000	399.97	1549.67
3	GUIDE	684196424	8.53	9828	-0.186	0.139	0.070	0.115	322.506260	-7.293564	-1356.64	933.90
4	GUIDE	758384368	9.75	9825	0.051	0.167	0.110	0.178	322.937659	-8.187761	2151.61	1585.67
5	GUIDE	758391200	9.64	9819	-0.094	-0.123	0.116	0.185	321.793565	-8.009857	479.28	-2188.12
6	GUIDE	758391768	9.75	9765	0.058	-0.115	0.123	0.197	322.421313	-7.871893	576.48	102.12
7	GUIDE	758391840	9.80	9819	0.168	-0.067	0.118	0.188	322.196358	-8.128595	1262.03	-911.20

2.4 Star Slots

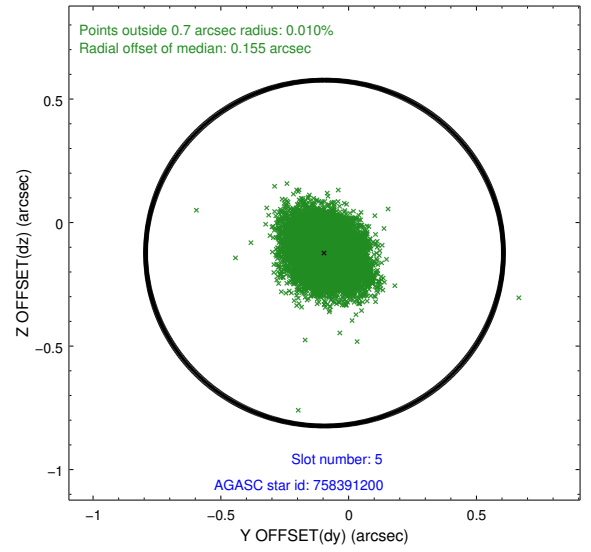
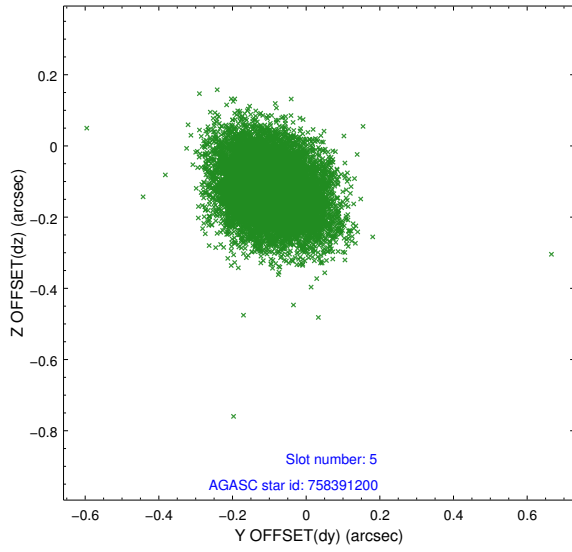
2.4.1 Slot 3



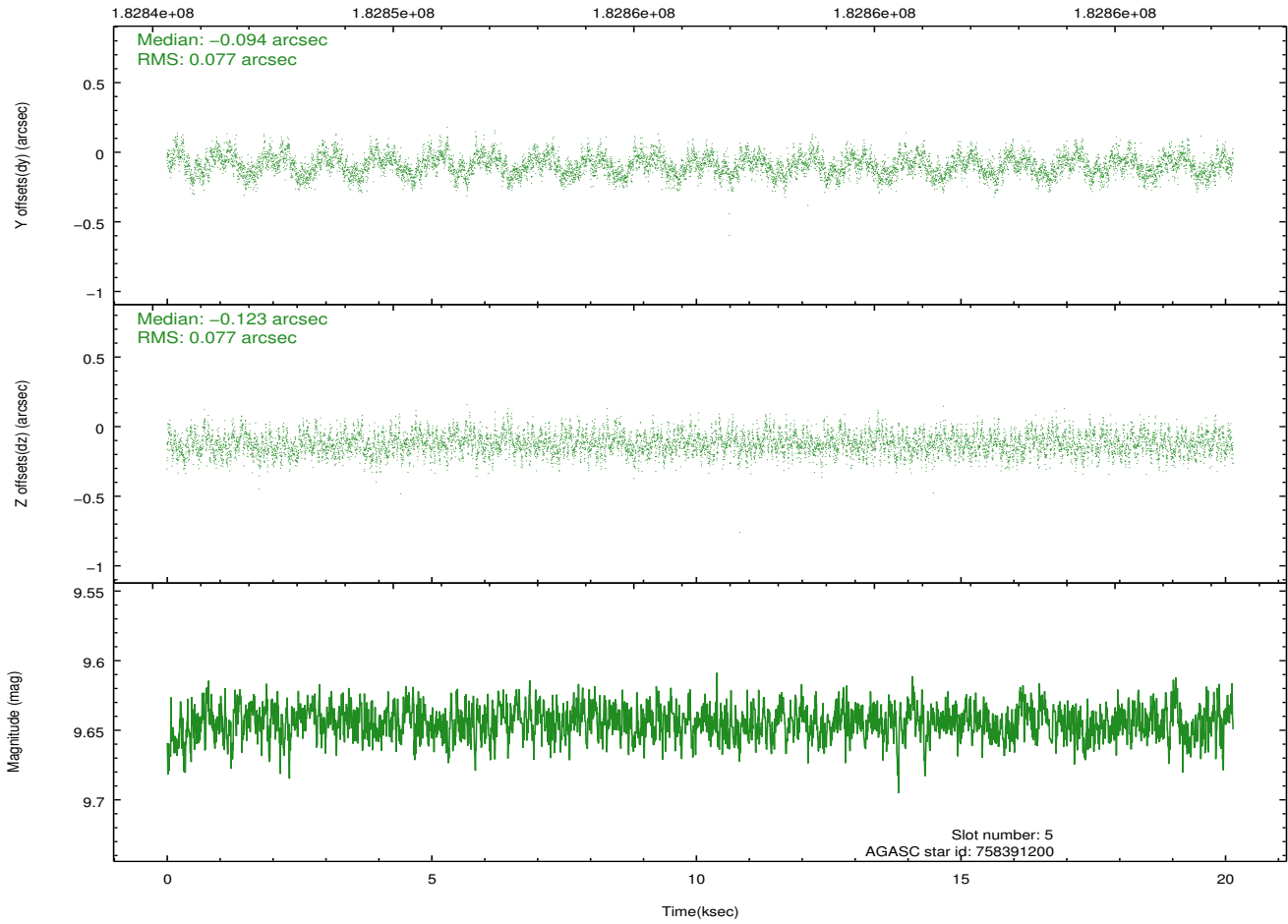
2.4.2 Slot 4



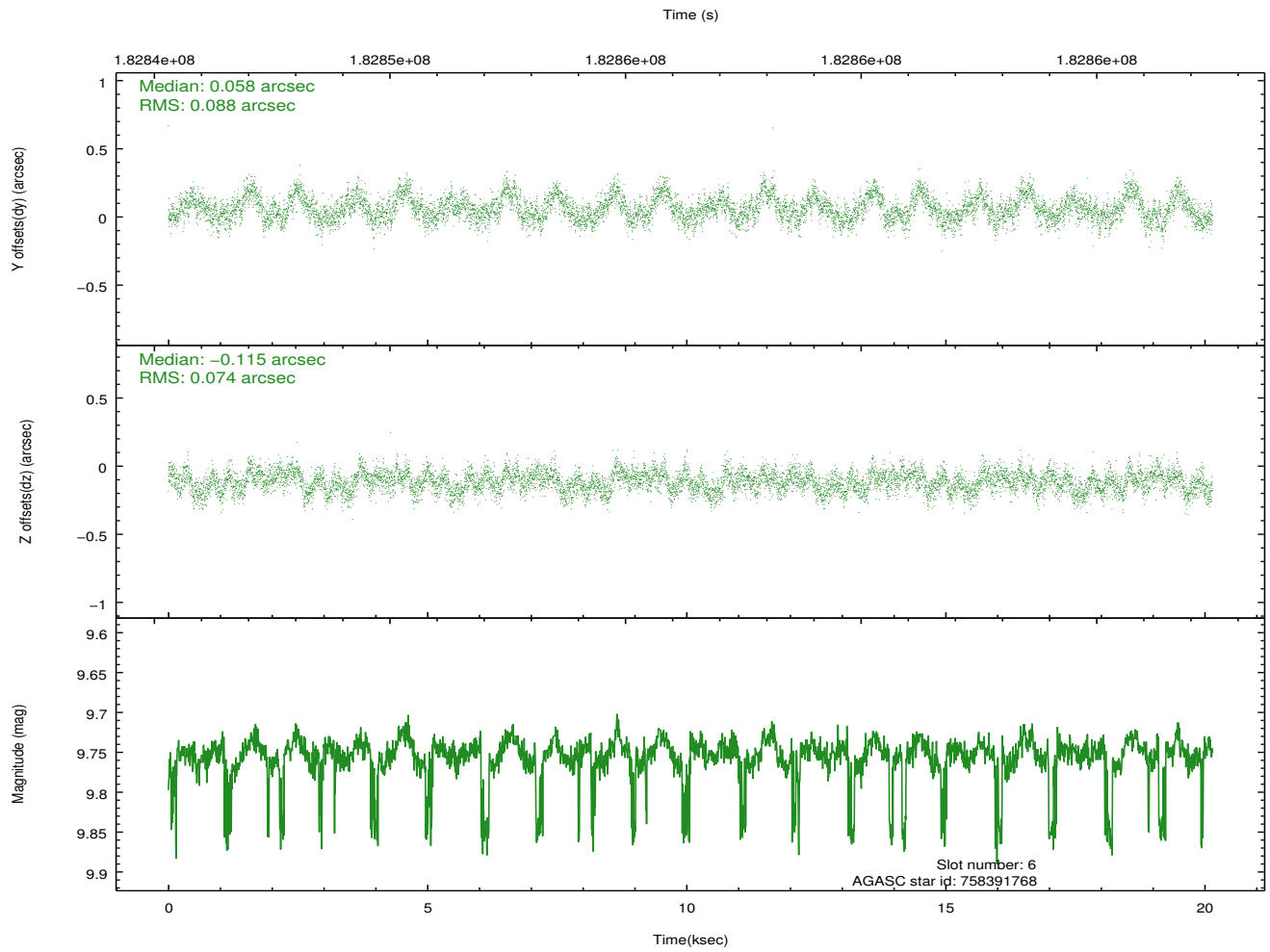
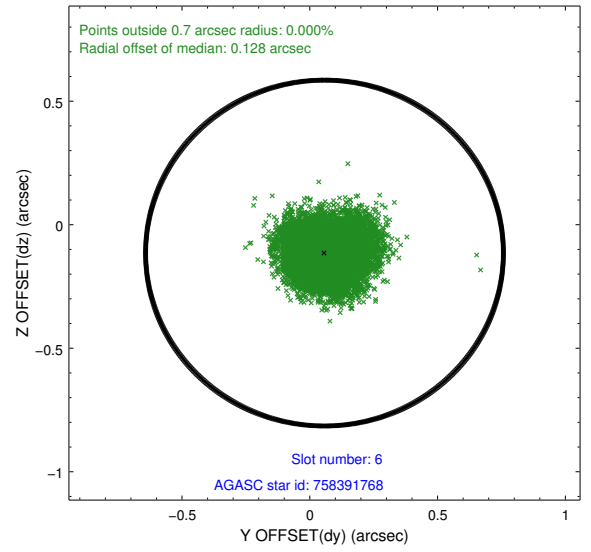
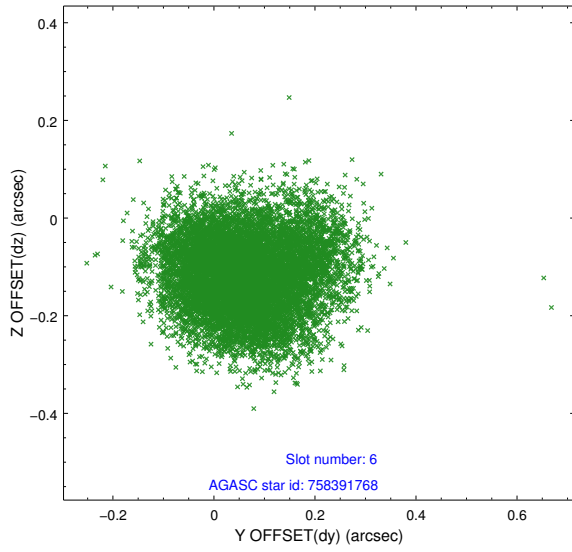
2.4.3 Slot 5



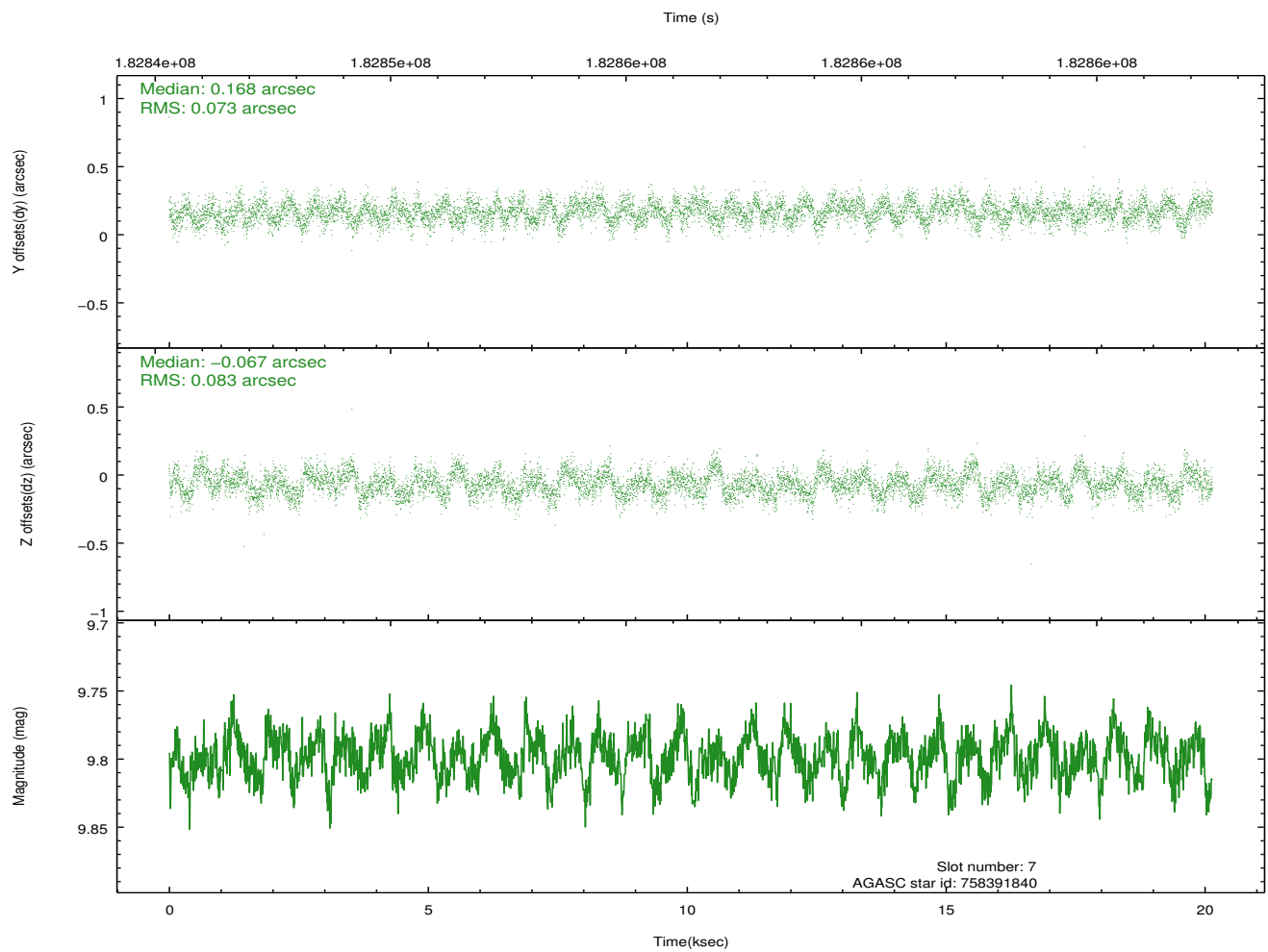
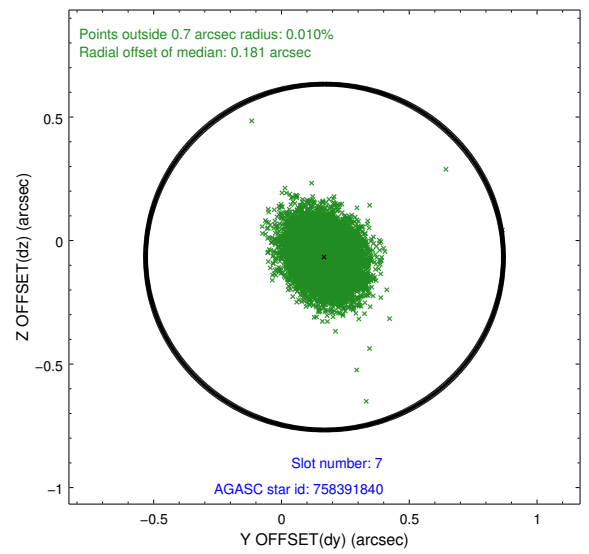
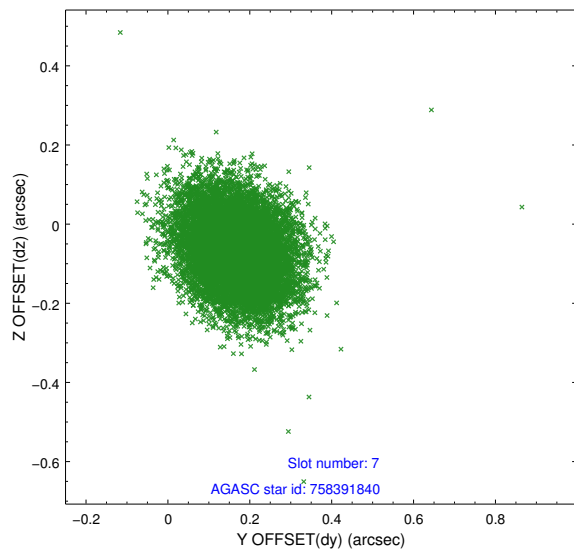
Time (s)



2.4.4 Slot 6

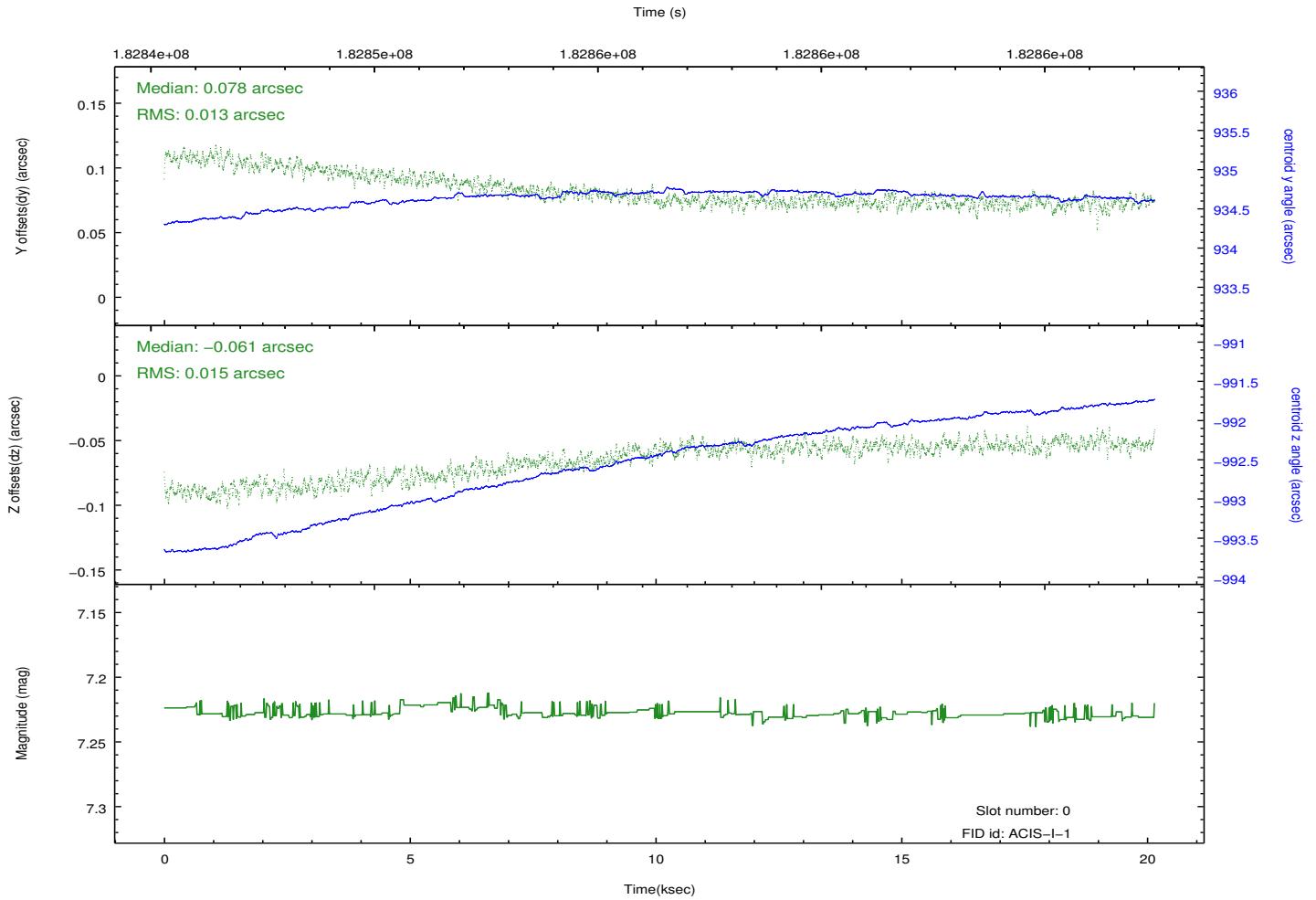
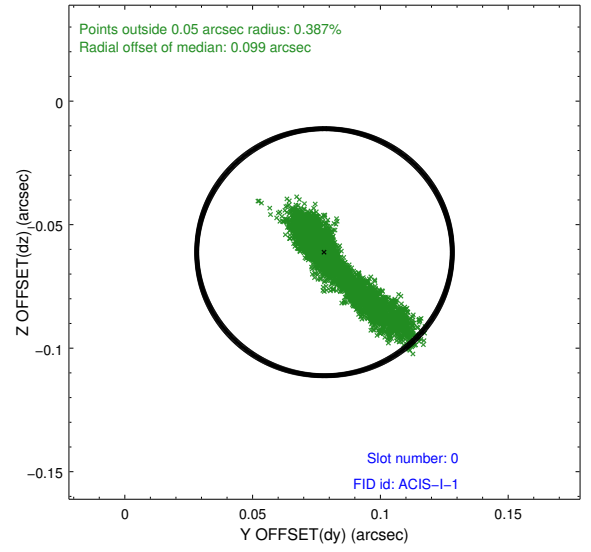
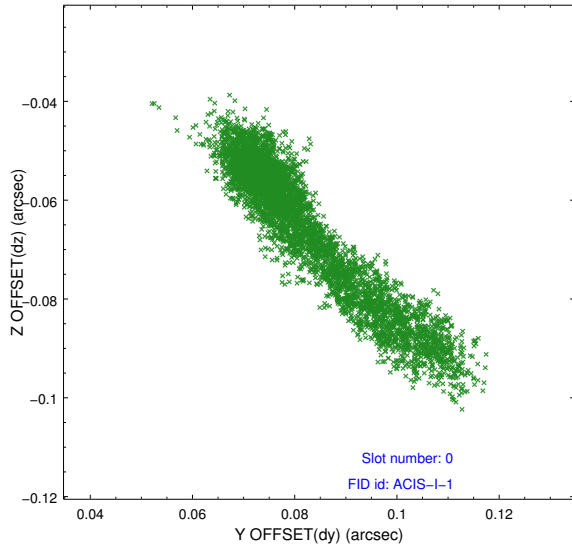


2.4.5 Slot 7

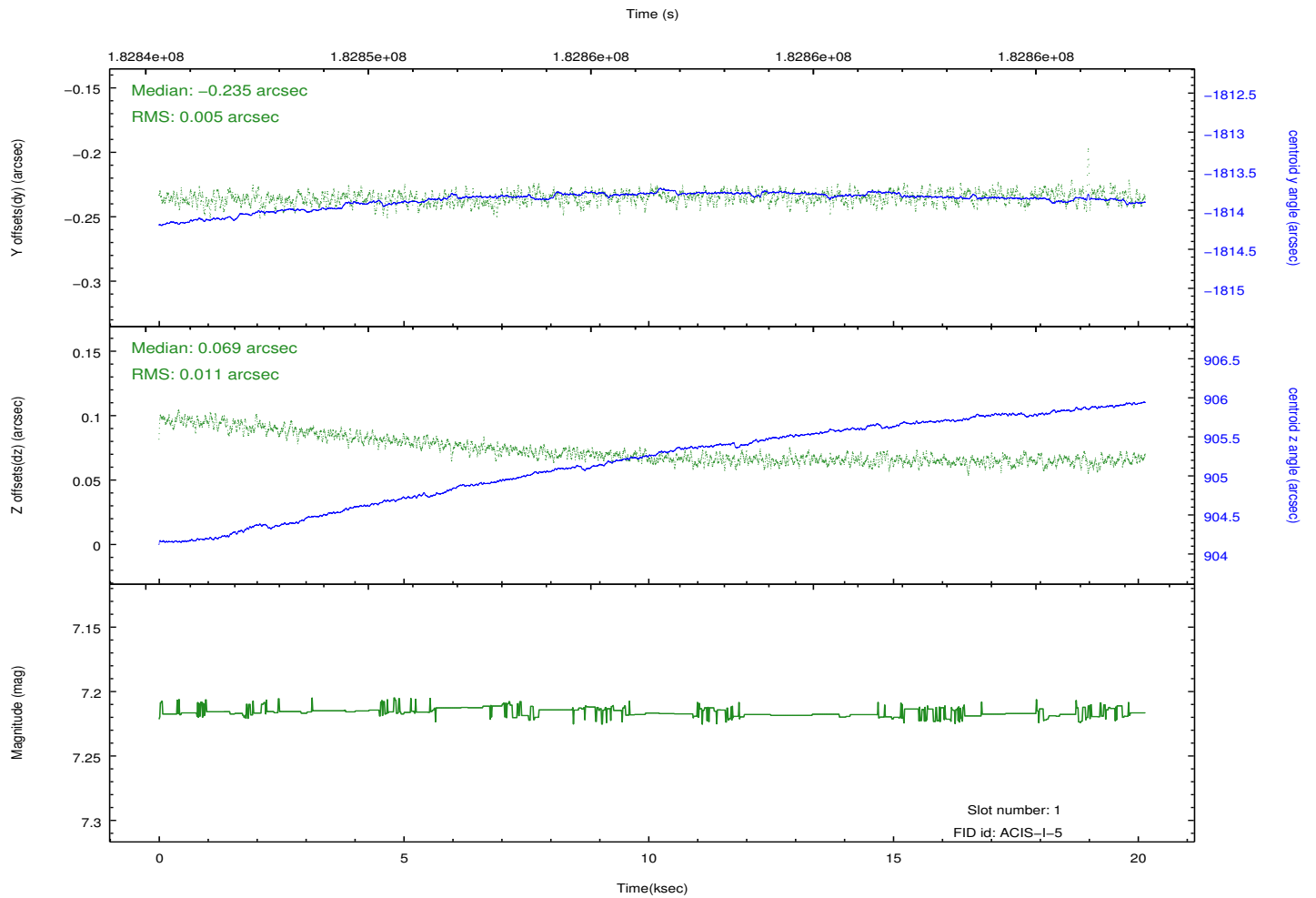
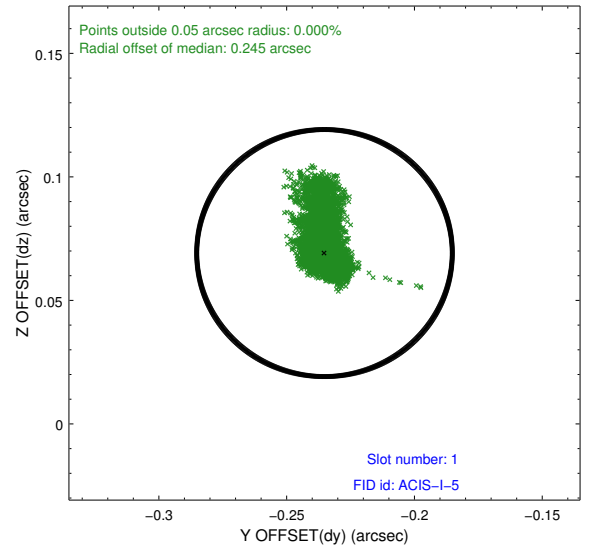
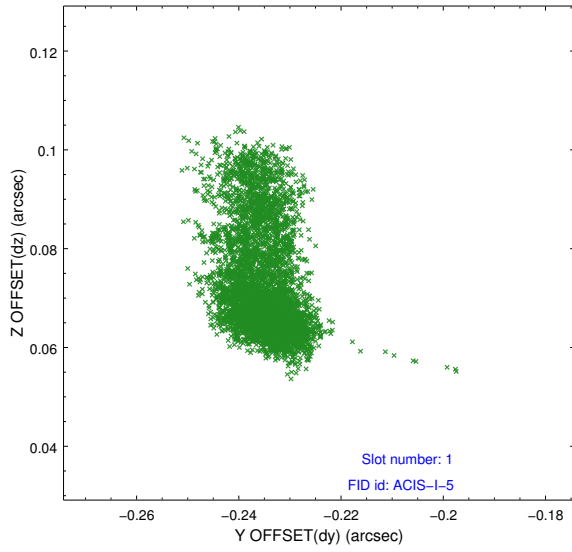


2.5 FID Slots

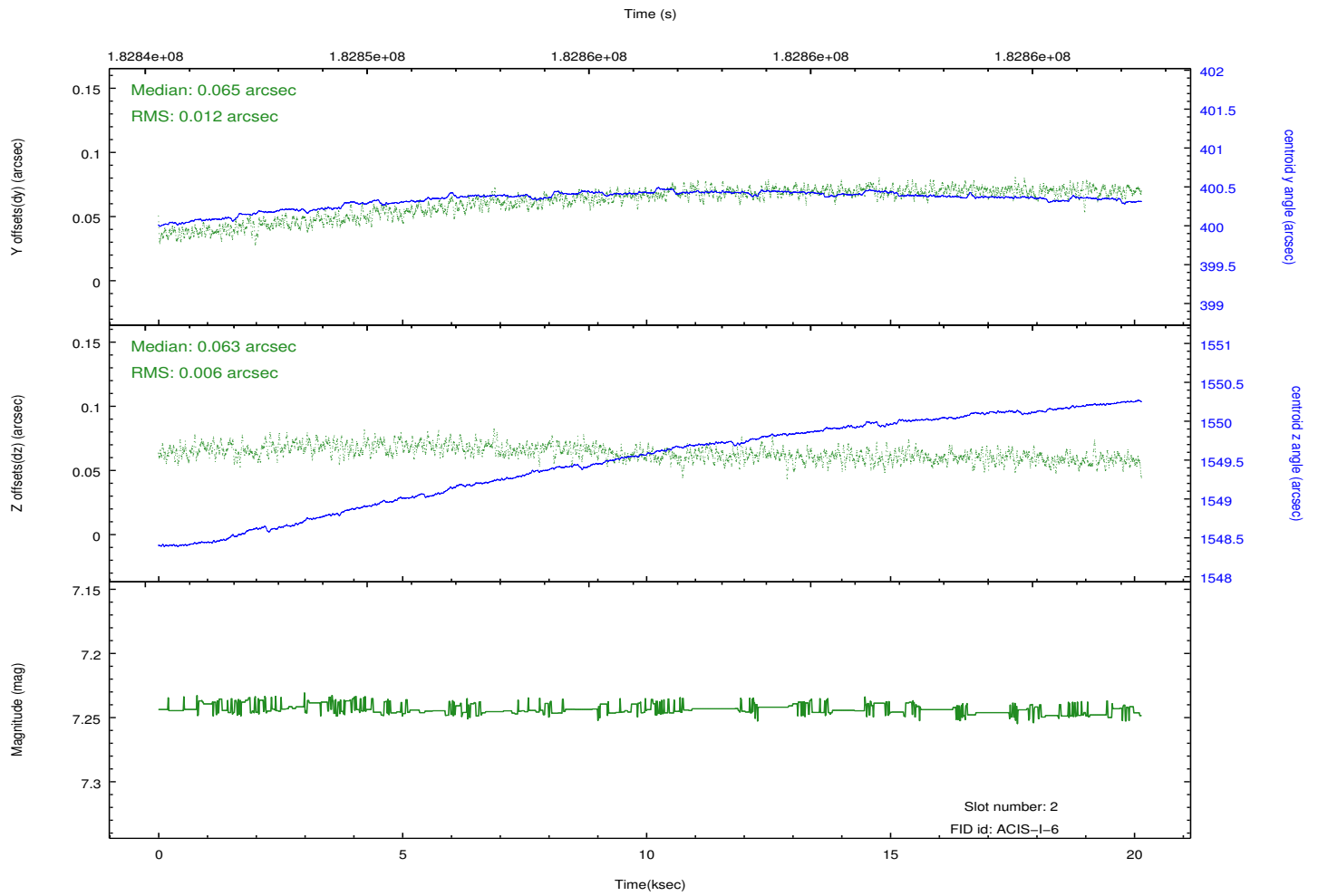
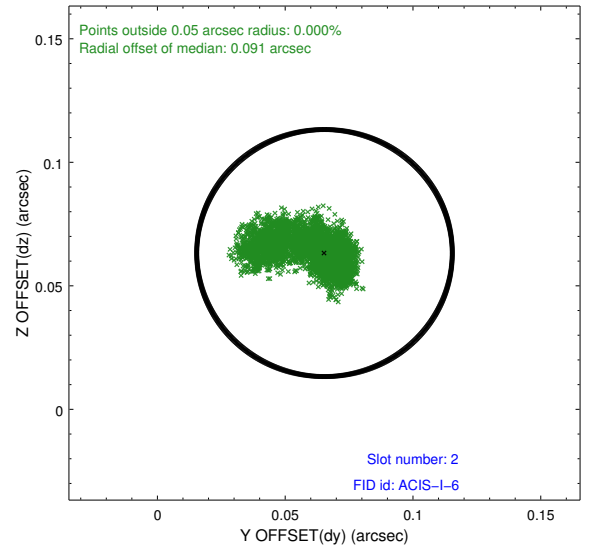
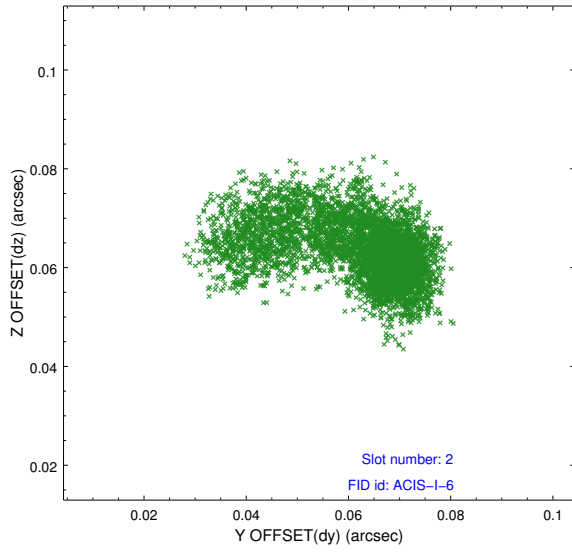
2.5.1 Slot 0



2.5.2 Slot 1



2.5.3 Slot 2



A Summary

A.1 Status

V&V Scientist	Jen Lauer
V&V Date (YYYY-MM-DD)	2012.11.30
V&V Edition	1
V&V Disposition and Status	OK
V&V Charge Time	20.137

A.2 Comments