

V&V Reference Report

L2 ASCDS Version : 8.4.5

Observation 3725 - L2 Version 3
Chandra X-Ray Center

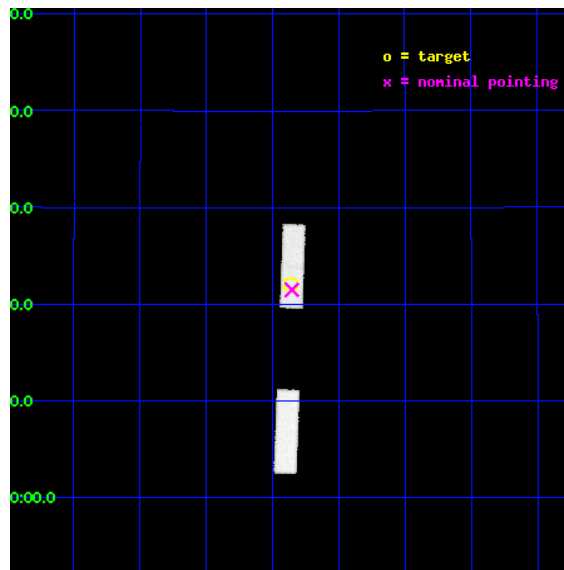
L2 Processing Date : Oct 26 2012

Contents

1	Front	2
2	OBI	3
2.1	OBI	3
2.1.1	Images	3
2.1.2	Bias	3
2.1.3	Parameters	4
2.1.4	Events	4
2.2	Compared Parameters	5
2.3	Aspect	6
2.4	Star Slots	9
2.4.1	Slot 3	9
2.4.2	Slot 4	10
2.4.3	Slot 5	11
2.4.4	Slot 6	12
2.4.5	Slot 7	13
2.5	FID Slots	14
2.5.1	Slot 0	14
2.5.2	Slot 1	15
2.5.3	Slot 2	16
A	Summary	17
A.1	Status	17
A.2	Comments	17

1 Front

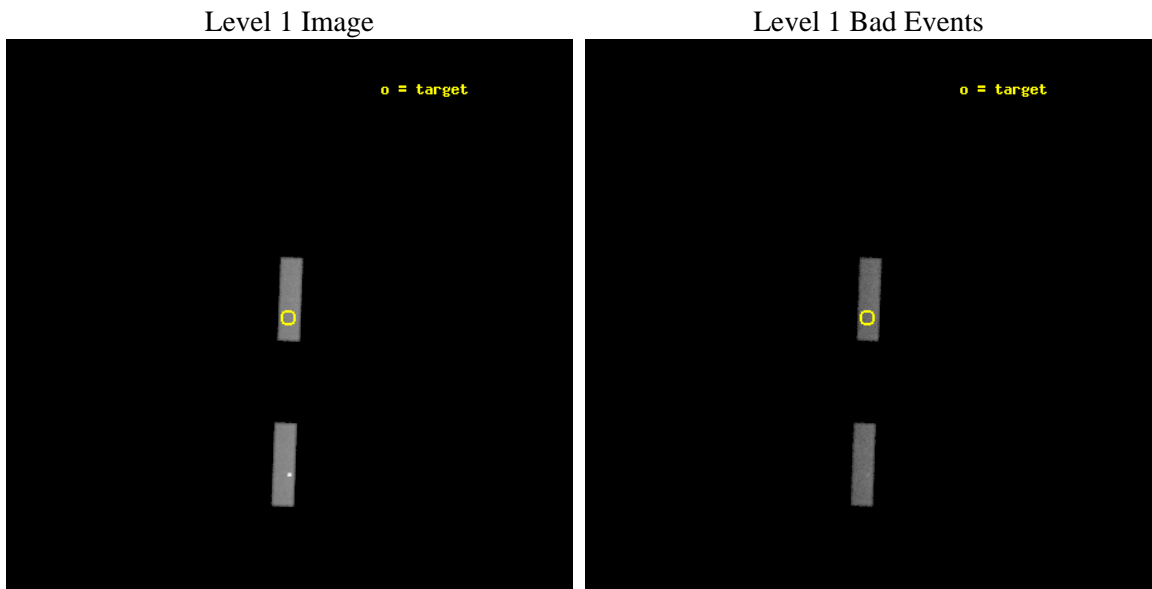
seq_num	100035	Sequence number
obs_id	3725	Observation id
title	SPATIALLY RESOLVED X-RAY EMISSION FROM SATURN	Proposal title
observer	Dr Jan-Uwe Ness	Principal investigator
object	SATURN	Source name
dtycycle	0	
cycle	P	events from which exps? Prim/Second/Both
ra_targ	83.96489	Observer's specified target RA [deg]
dec_targ	22.36797	Observer's specified target Dec [deg]
ra_nom	83.963441844419	Nominal RA [deg]
dec_nom	22.358392977796	Nominal Dec [deg]
roll_nom	272.06972116624	Nominal Roll [deg]
revision	3	Processing version of data
ontime	35587.800235659	Sum of GTIs [s]
livetime	34035.769161877	Livetime [s]
ontime5	35587.800235659	Sum of GTIs [s]
ontime7	35587.800235659	Sum of GTIs [s]
l2events	86342	Number of level 2 events



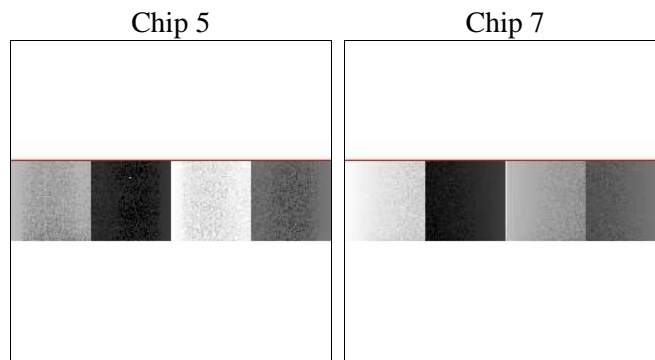
2 OBI

2.1 OBI

2.1.1 Images



2.1.2 Bias



2.1.3 Parameters

obi_num	0	Obi number	sched_exp_time	35400.000000	[s] Scheduled observation exposure time
ascdsver	8.4.5	Processing system revision	ontime	35587.800235659	Sum of GTIs [s]
caldsver	4.5.2	 	ontime5	35587.800235659	Sum of GTIs [s]
date	2012-10-26T13:17:56	Date and time of file creation	ontime7	35587.800235659	Sum of GTIs [s]
revision	3	Processing version of data	ll events	209869	Number of level 1 events

2.1.4 Events

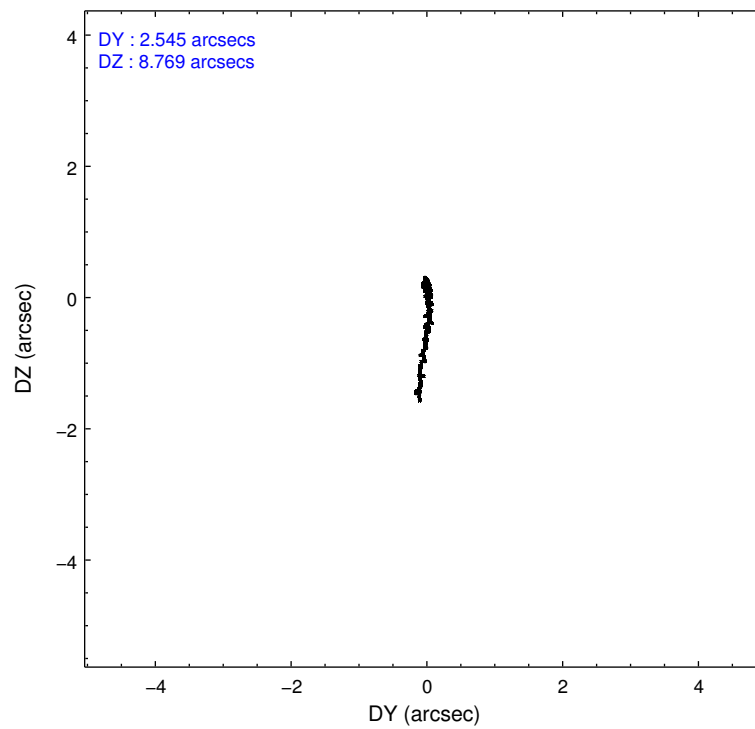
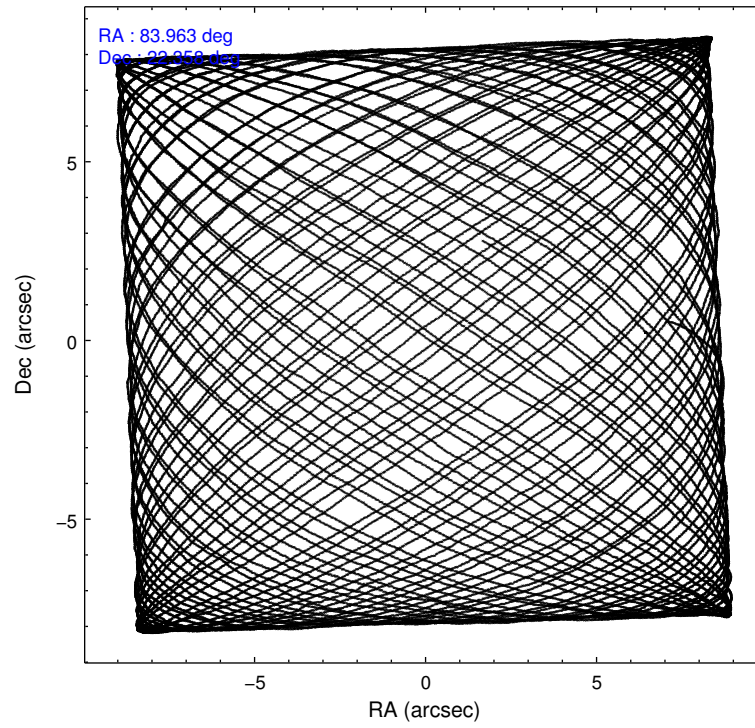
	ccd 5	ccd 7
level 1 events	127016	82853
rejected events	46548	43867
rejected %	36%	52%

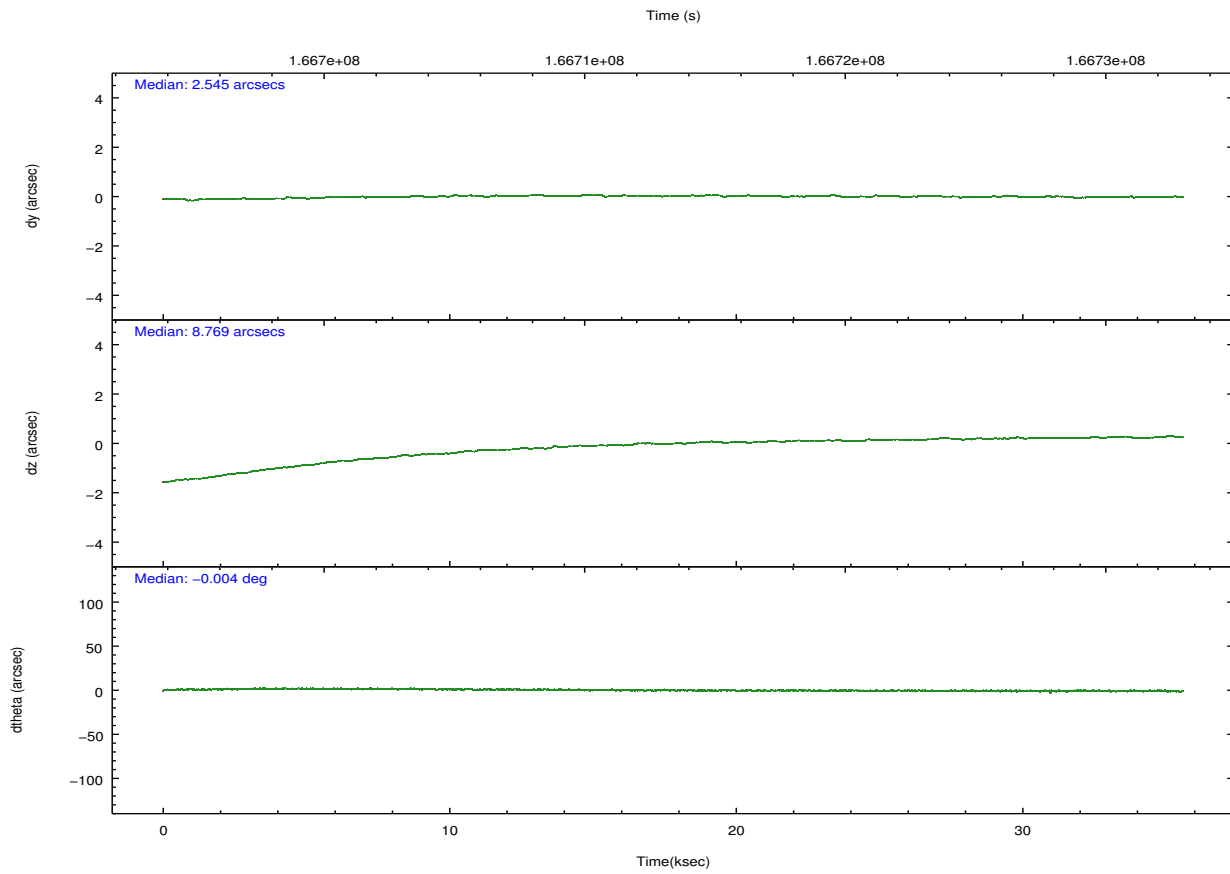
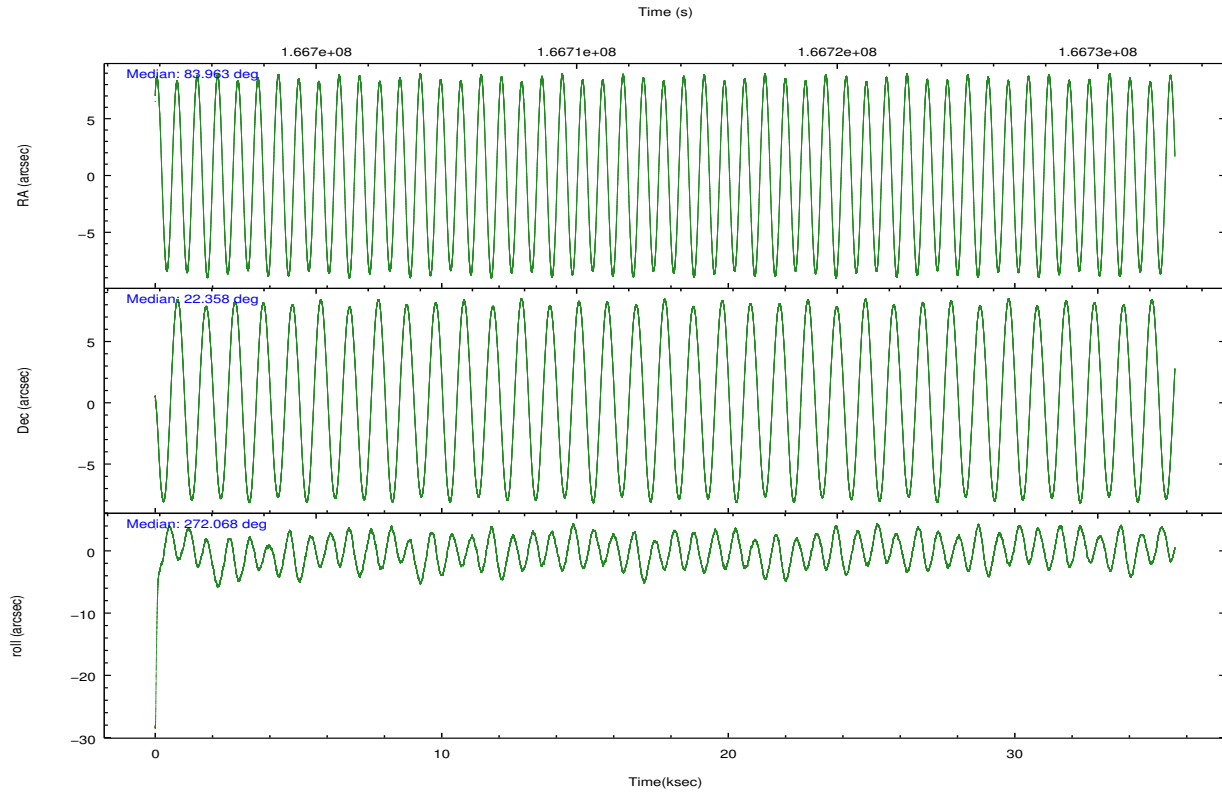
	ccd 5	ccd 7
grade 0 events	38887	5030
	30%	6%
grade 1 events	311	68
	0%	0%
grade 2 events	16163	8209
	12%	9%
grade 3 events	3899	4512
	3%	5%
grade 4 events	3654	4375
	2%	5%
grade 5 events	7039	7495
	5%	9%
grade 6 events	21086	18311
	16%	22%
grade 7 events	35977	34853
	28%	42%

2.2 Compared Parameters

Parameter	Planned	Actual	Parameter	Planned	Actual
Instrument	ACIS	ACIS	Obspar format version number	7	7
Detector	ACIS-57	ACIS-57	Obspar file type	PREDICTED	ACTUAL
Grating	NONE	NONE	Obspar update status	NONE	UPDATED
Data mode	VFAINT	VFAINT	Number of optional ACIS chips dropped	0	0
Observation mode	POINTING	POINTING	On-chip summing requested	N	N
[deg] Pointing RA	83.947455	83.96344184441853	Subarray requested	CUSTOM	1/4
[deg] Pointing Dec	22.381273	22.35839297779631	Subarray start row	385	385
[deg] Pointing Roll	271.919184	272.0697211662379	Subarray row count	256	256
[mm] SIM focus pos	-0.684267	-0.6828225247311905	Alternating exposures requested	N	N
[mm] SIM defocus	0	0.001444936568705701	[s] Primary exposure time	0.000000	0.9
[mm] SIM translation stage pos	-190.132523	-190.1400660498719			
[mm] SIM translation stage offset	0	0.00754346686406393			
[s] Observation start time (MET)	166695788.184000	166694002.91745			
Observation start date	2003-04-14T08:22:04	2003-04-14T07:53:22			
[s] Observation end time (MET)	166731188.184000	166731321.63153			
Observation end date	2003-04-14T18:12:04	2003-04-14T18:15:21			
Read mode	TIMED	TIMED			

2.3 Aspect



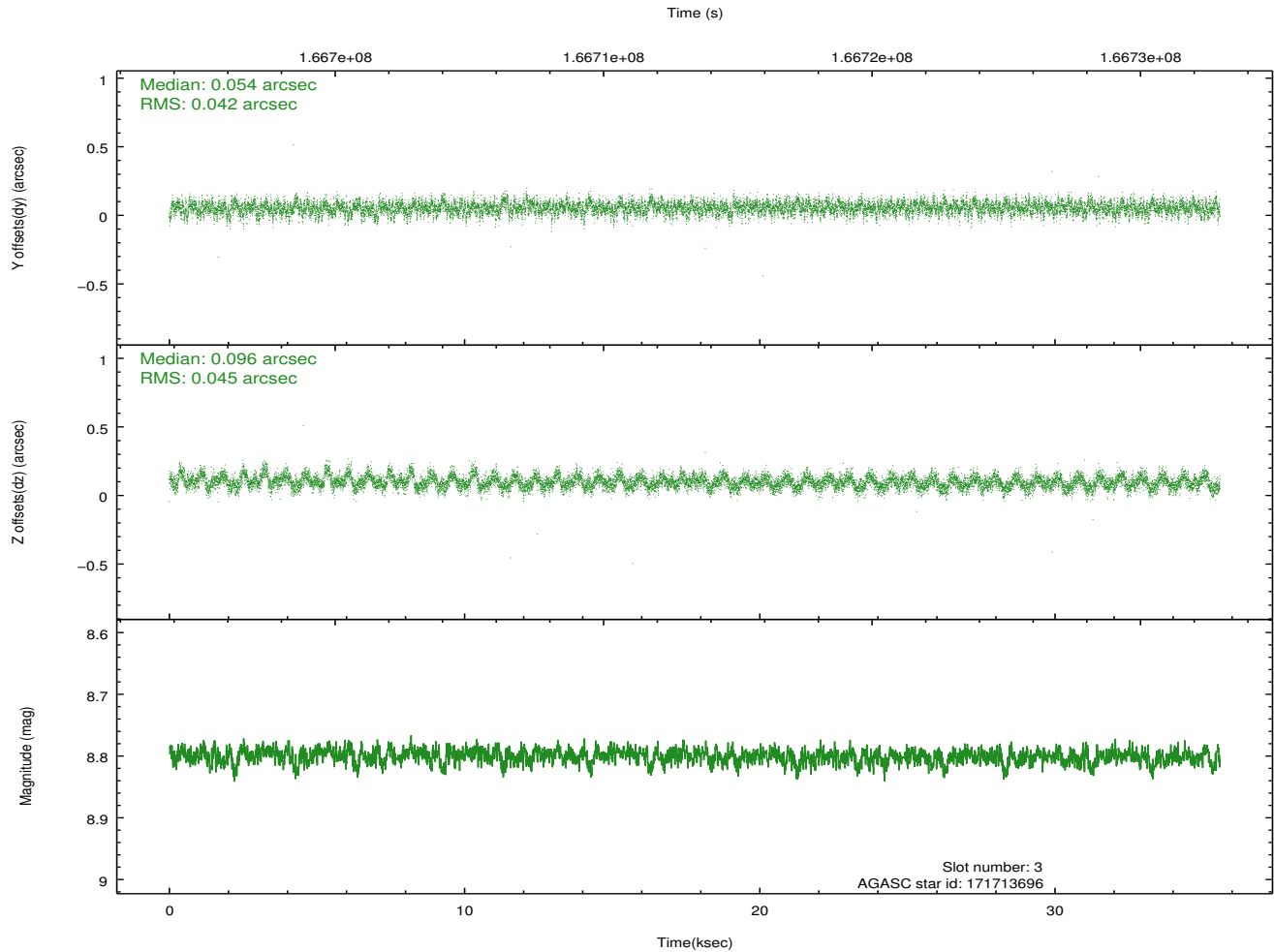
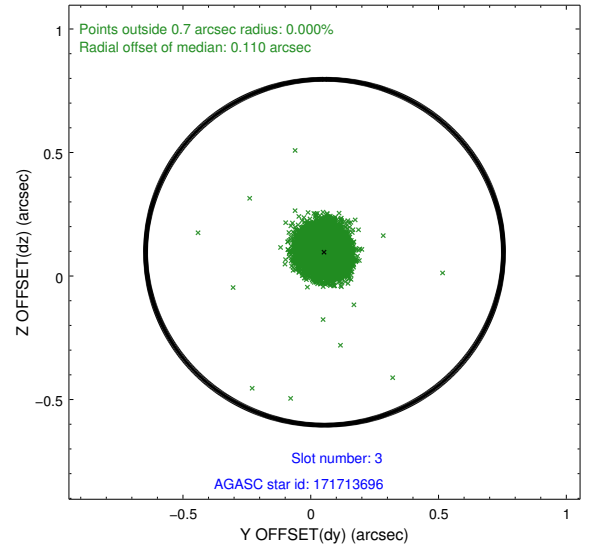
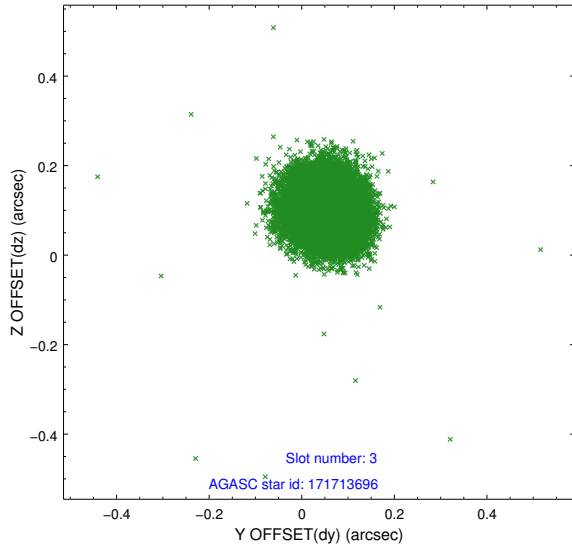


Slot Statistics

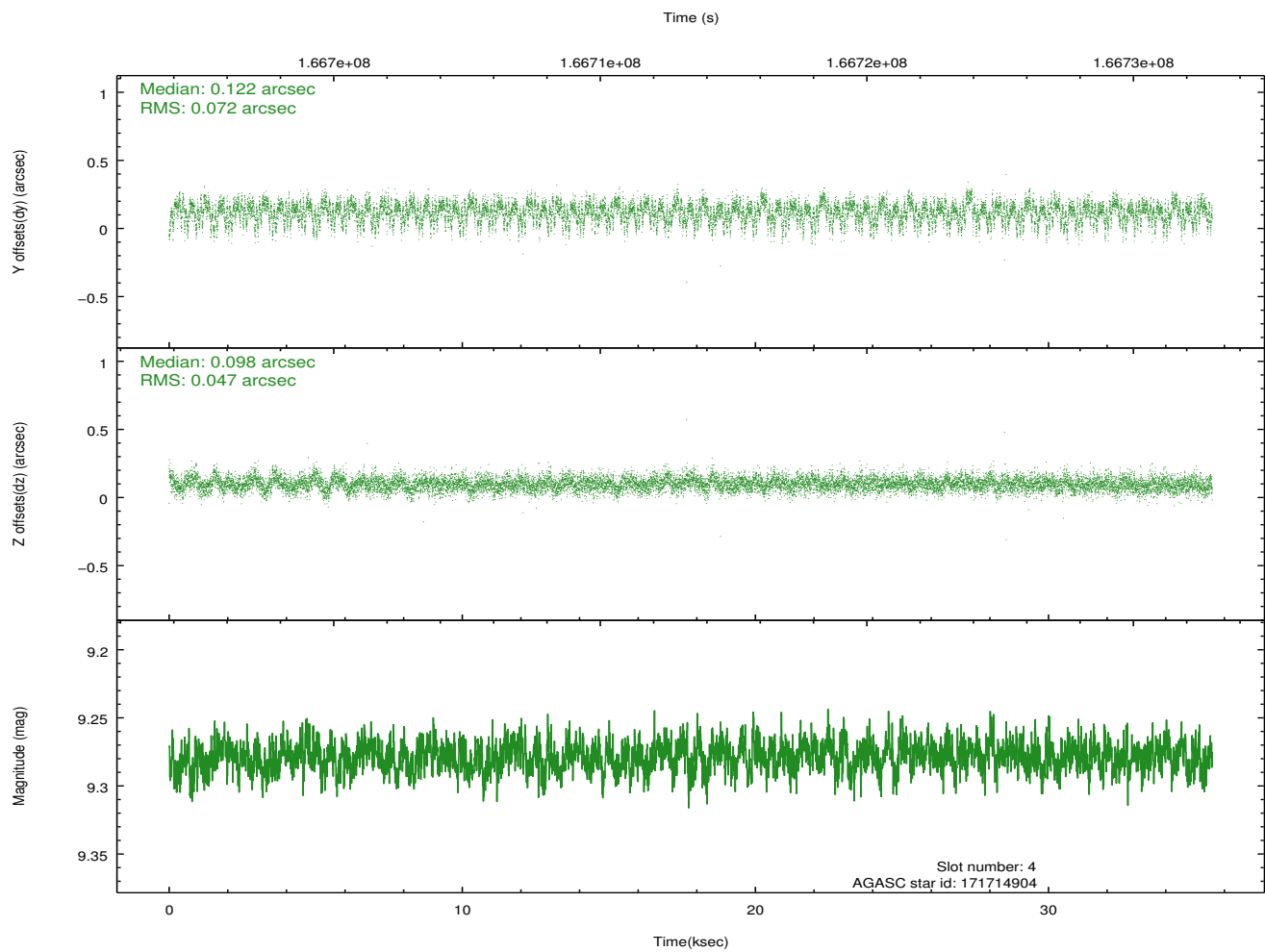
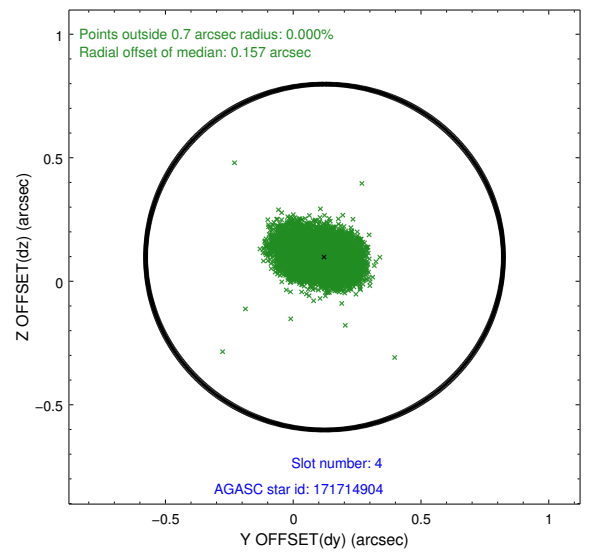
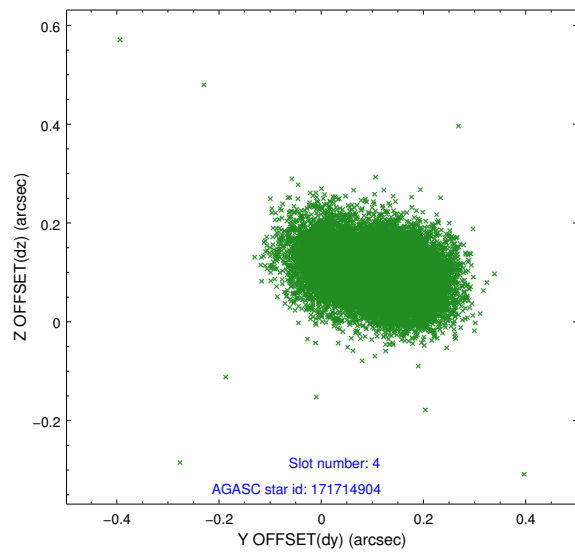
slot	status	id	mag	n_pts	med_dy	med_dz	dr1	dr2	ra	dec	mean_y	mean_z
0	FID	ACIS-S-2	7.10	8681	-0.026	-0.013	0.009	0.015	0.000000	0.000000	-755.19	-1729.78
1	FID	ACIS-S-4	7.20	8680	-0.006	0.016	0.008	0.016	0.000000	0.000000	2158.09	178.71
2	FID	ACIS-S-5	7.24	8681	0.001	0.006	0.008	0.014	0.000000	0.000000	-1807.96	172.39
3	GUIDE	171713696	8.80	17353	0.054	0.096	0.065	0.105	84.473197	21.894804	1806.26	1696.96
4	GUIDE	171714904	9.28	17357	0.122	0.098	0.089	0.155	84.565036	22.013202	1389.69	2016.25
5	GUIDE	242223104	8.60	17351	-0.216	-0.196	0.063	0.101	83.329008	22.957429	-2145.89	-1979.40
6	GUIDE	243941560	8.29	17361	-0.047	-0.085	0.063	0.100	83.733264	22.568598	-698.28	-689.20
7	GUIDE	171721904	9.19	17350	0.092	0.089	0.093	0.168	84.272676	22.116922	986.47	1052.41

2.4 Star Slots

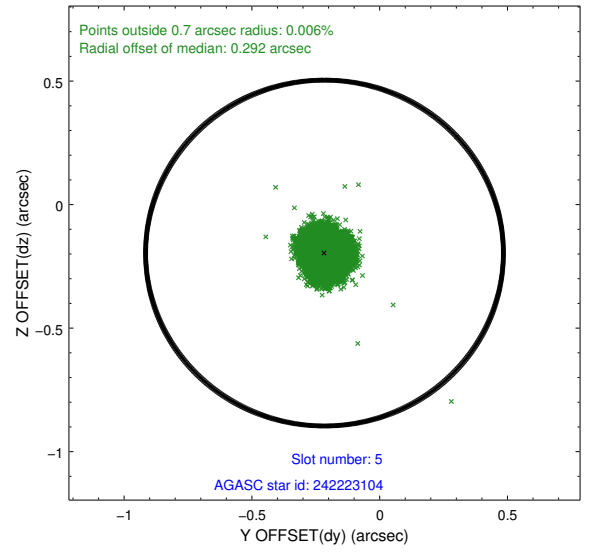
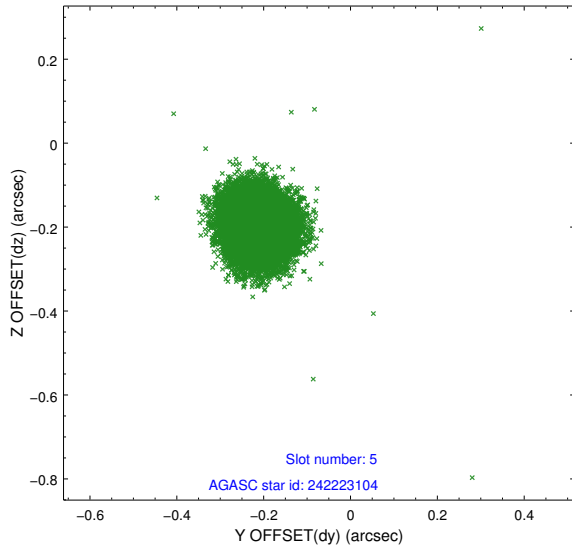
2.4.1 Slot 3



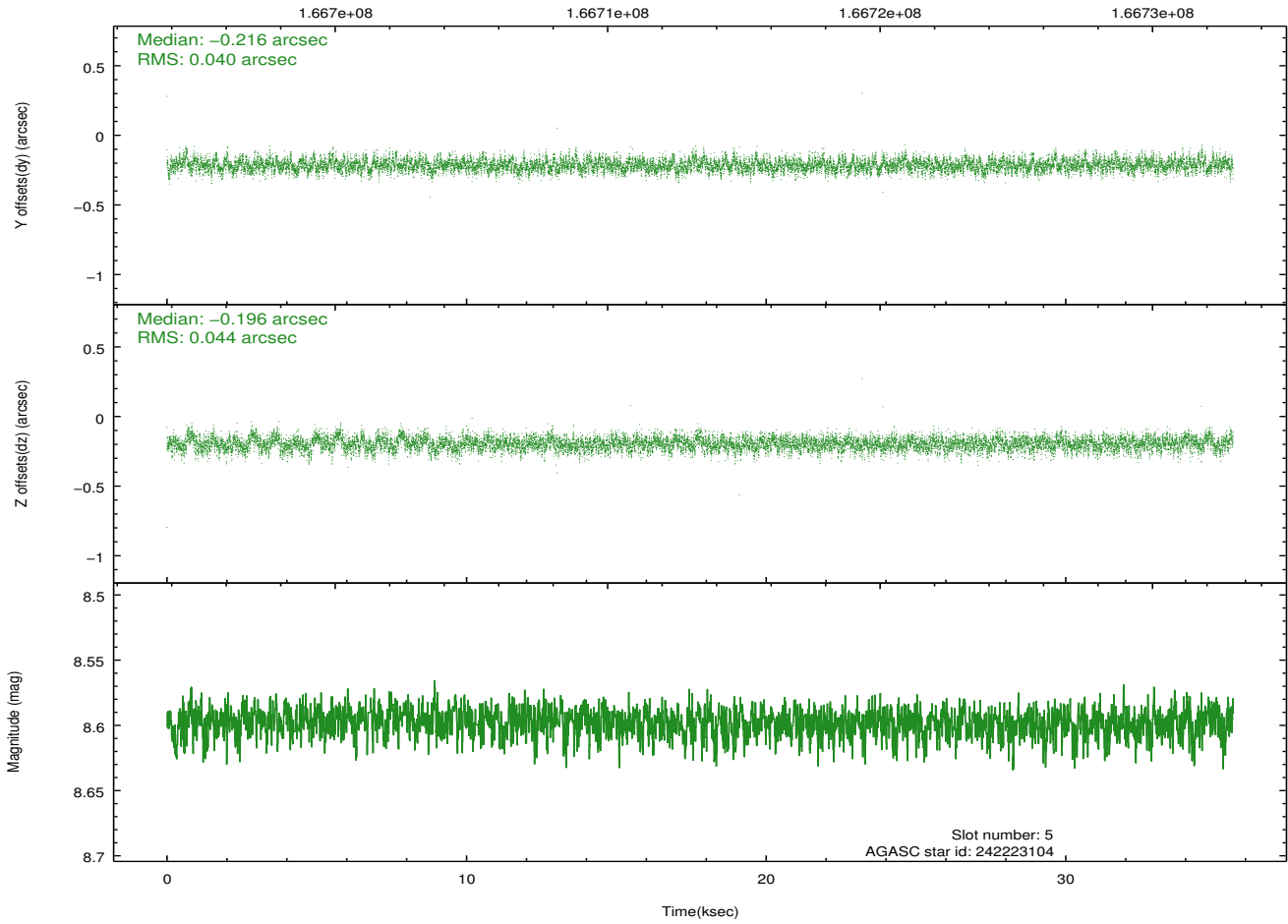
2.4.2 Slot 4



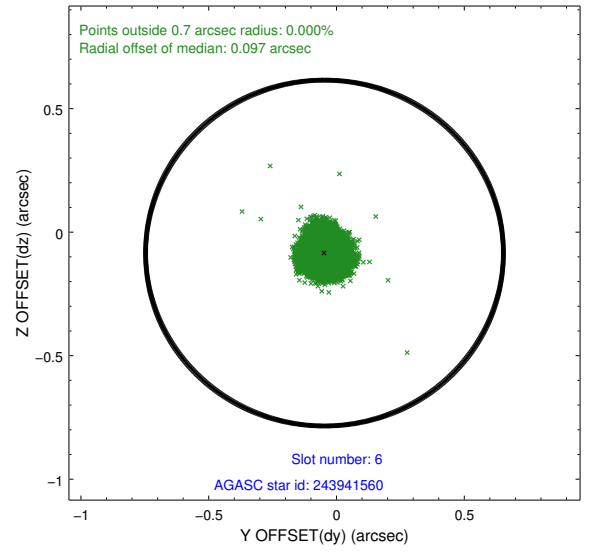
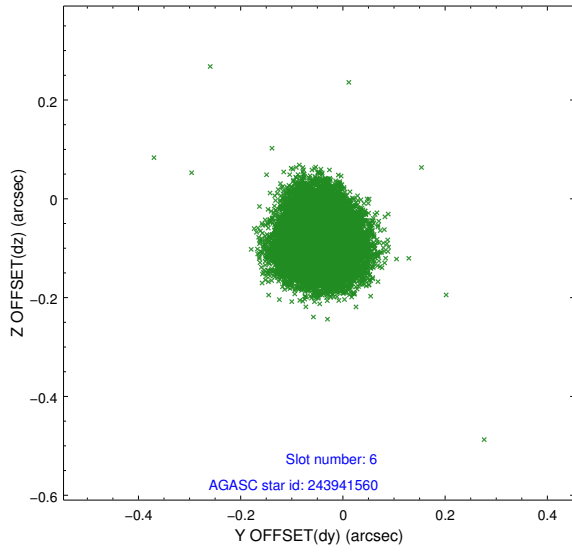
2.4.3 Slot 5



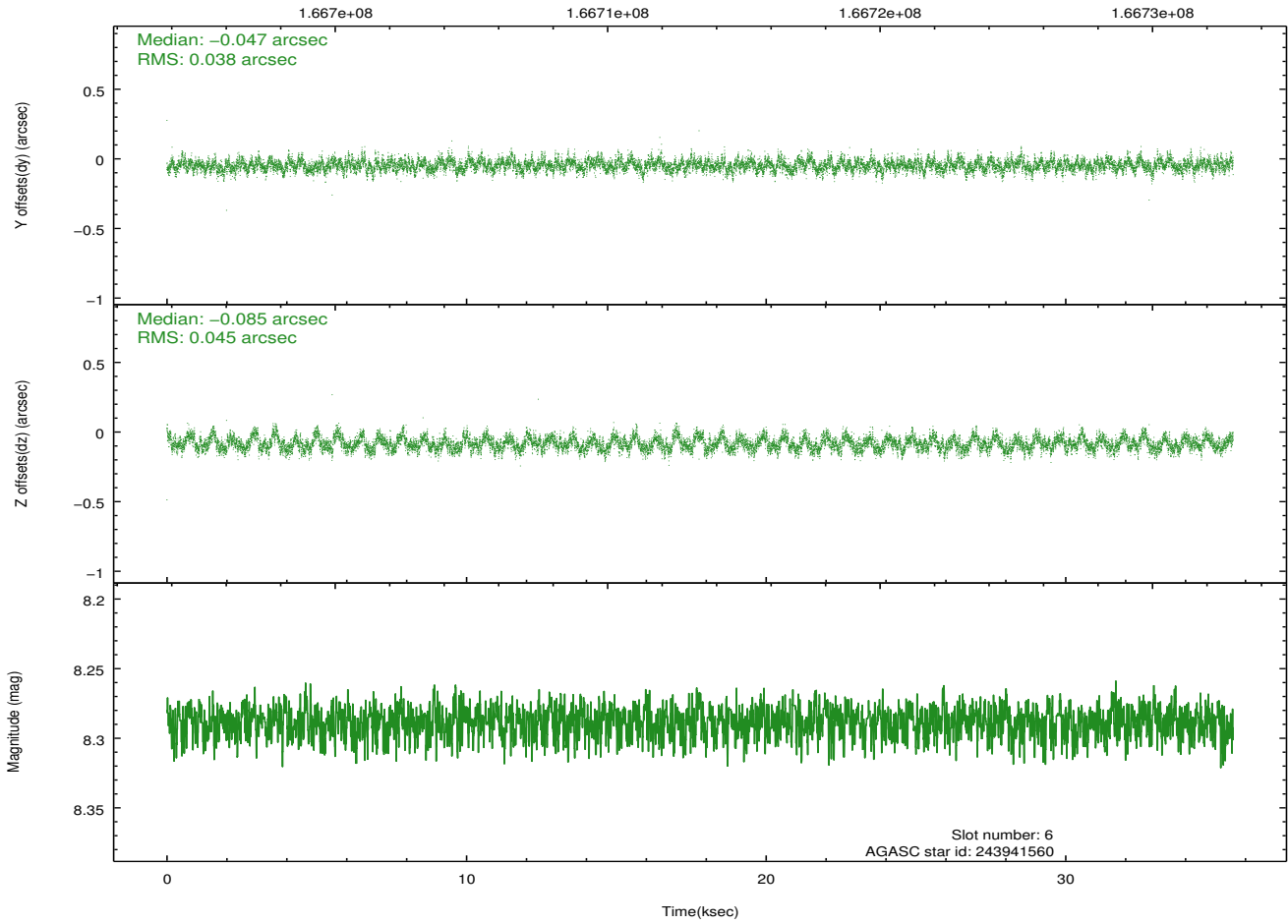
Time (s)



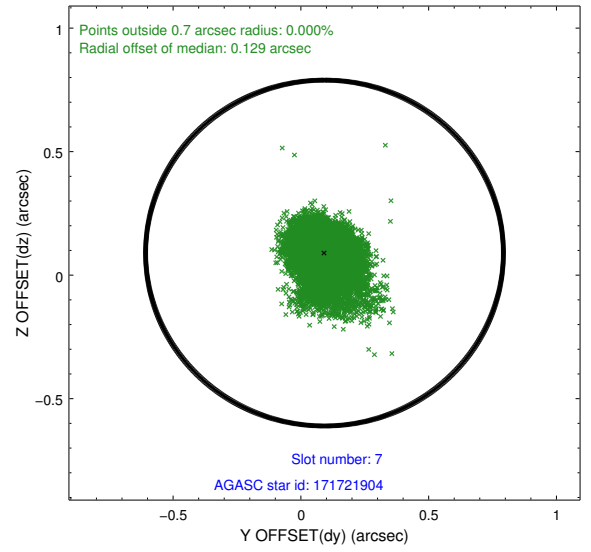
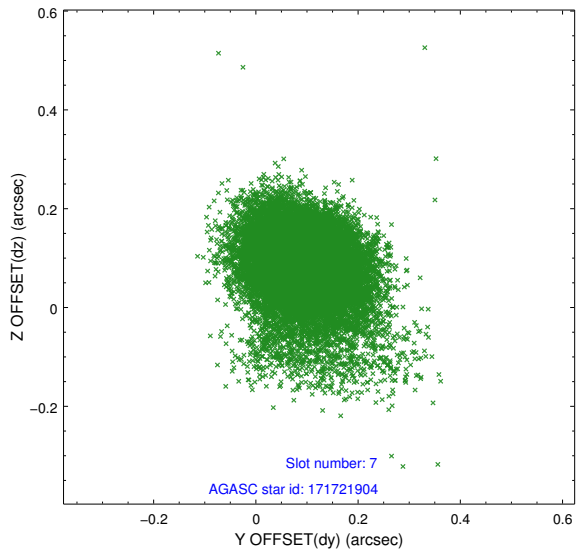
2.4.4 Slot 6



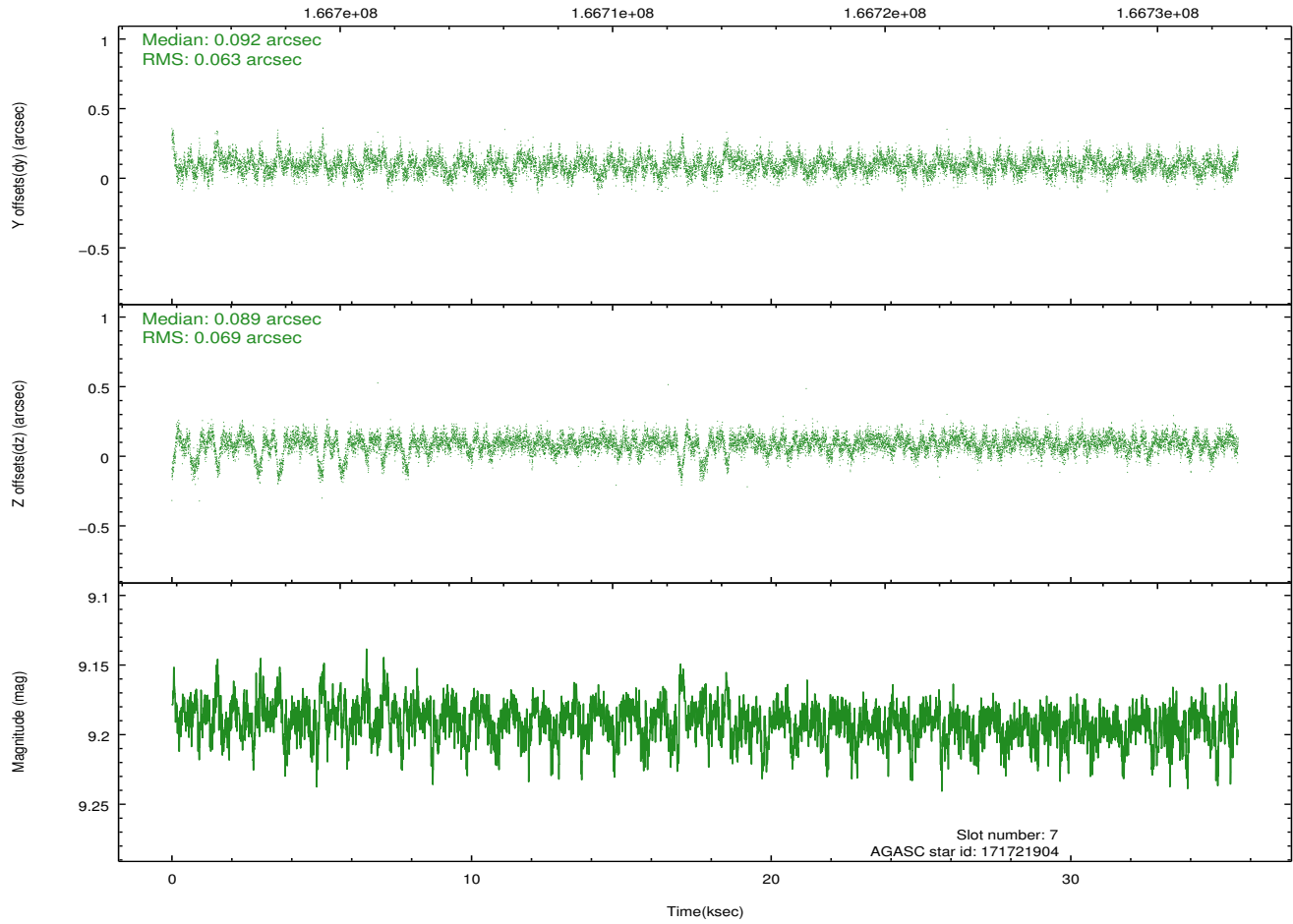
Time (s)



2.4.5 Slot 7

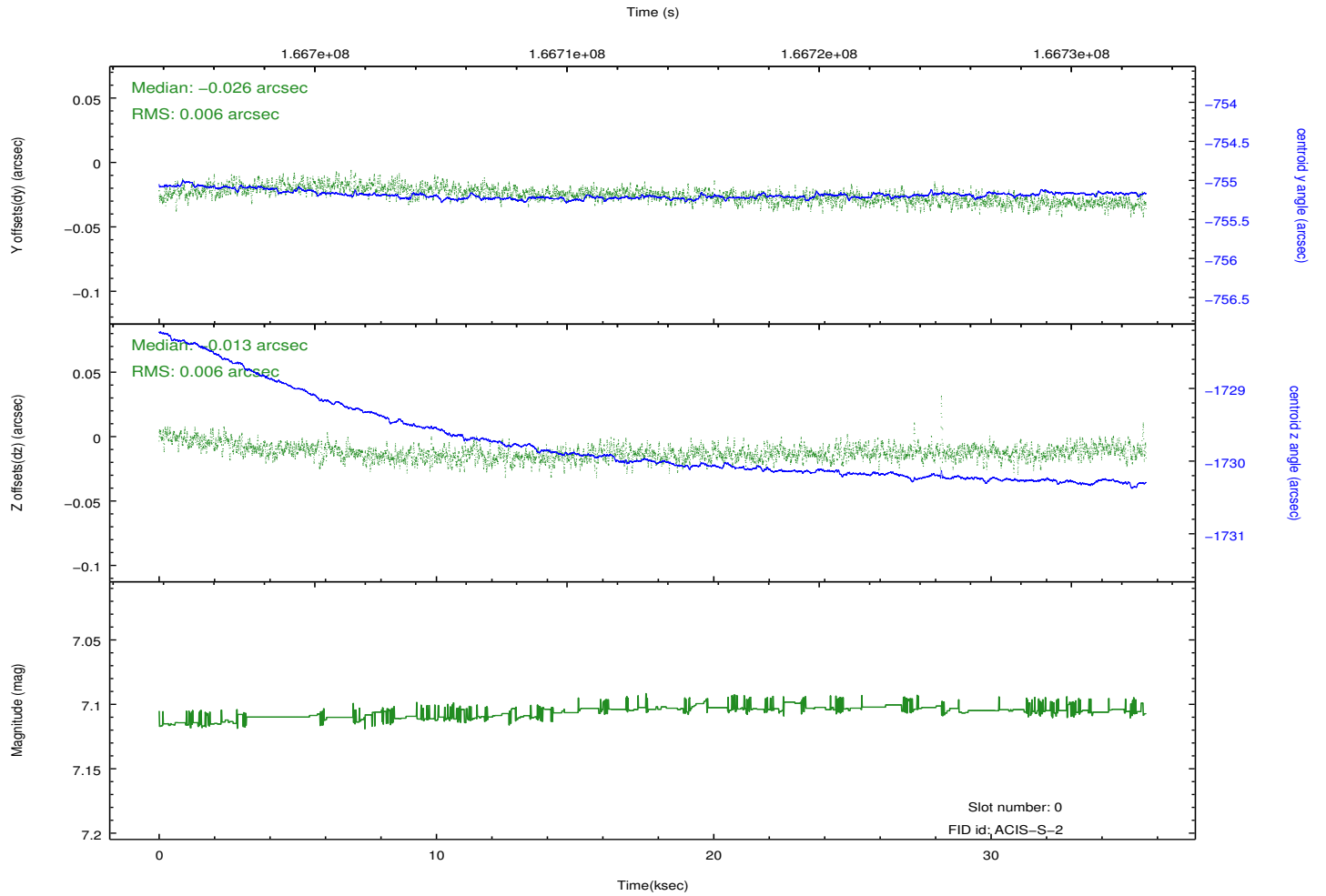
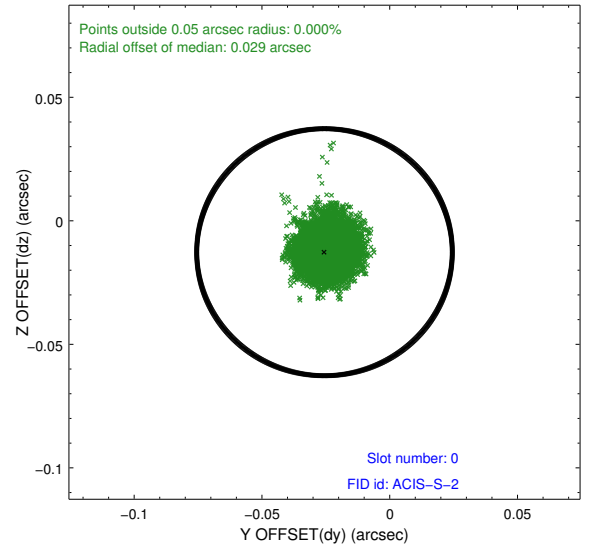
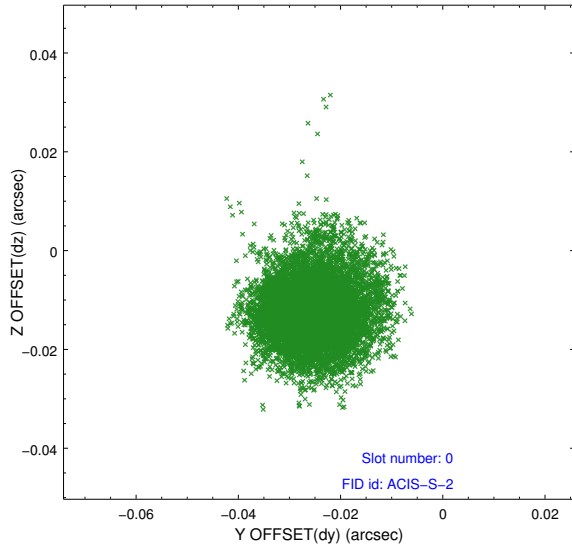


Time (s)

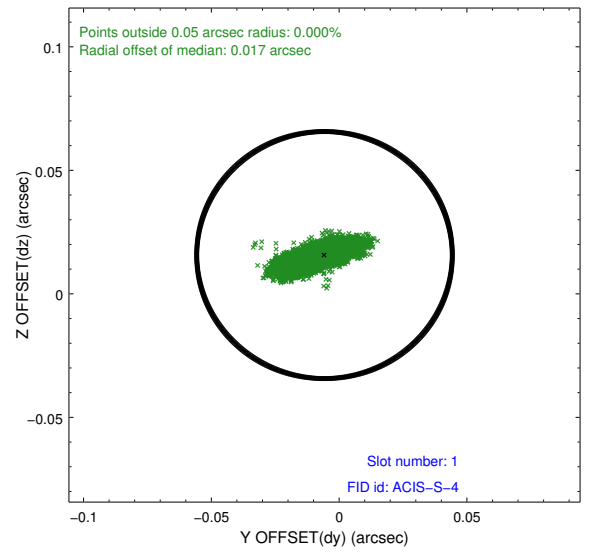
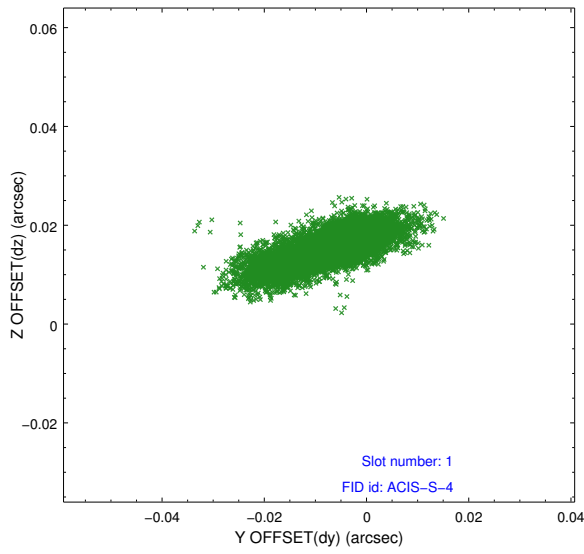


2.5 FID Slots

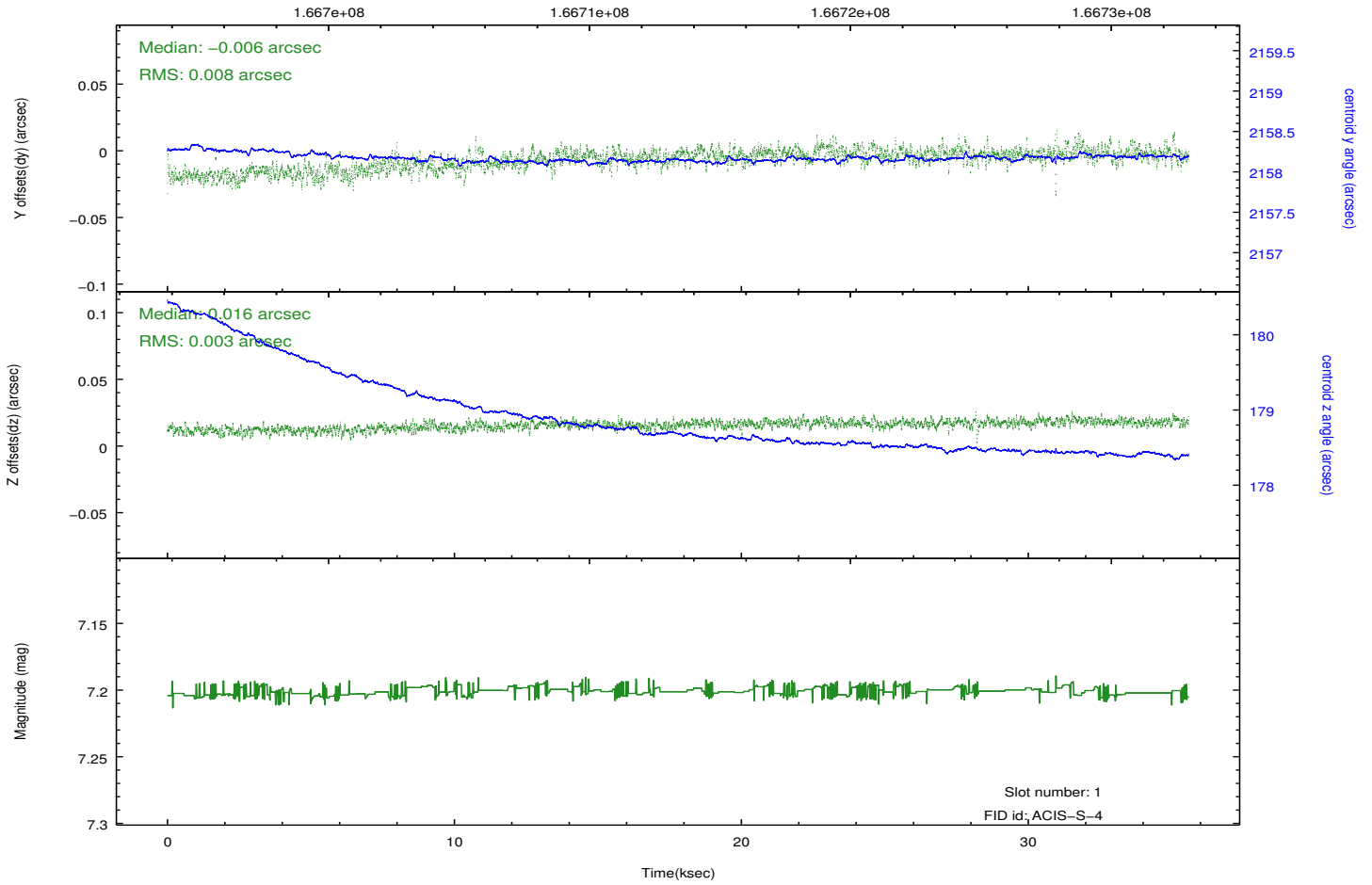
2.5.1 Slot 0



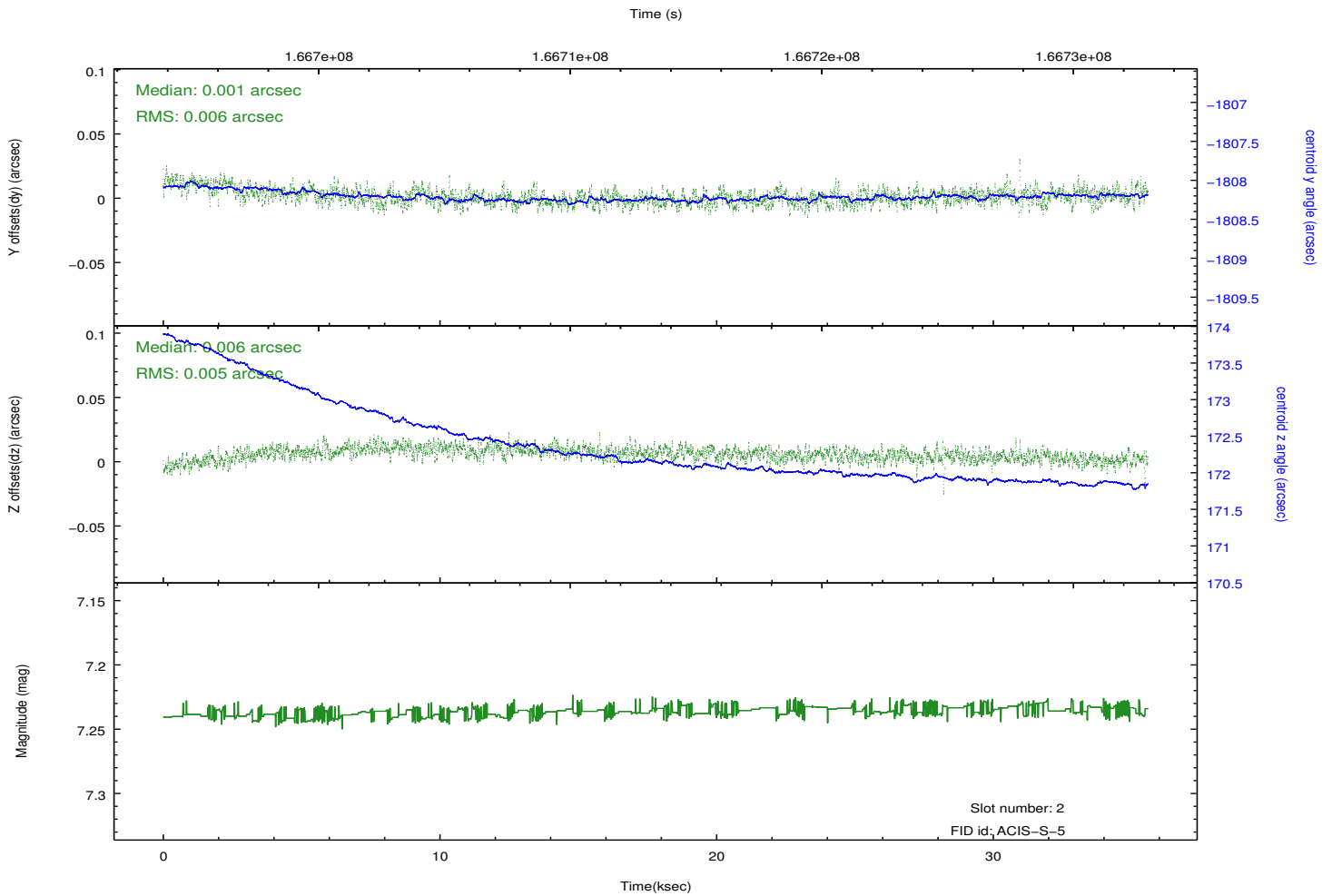
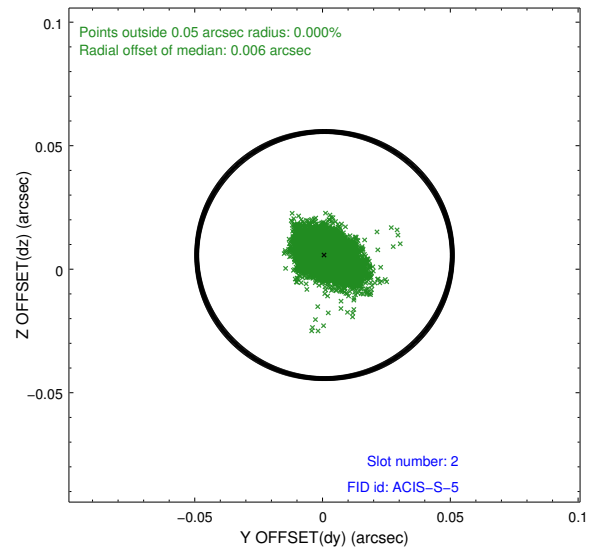
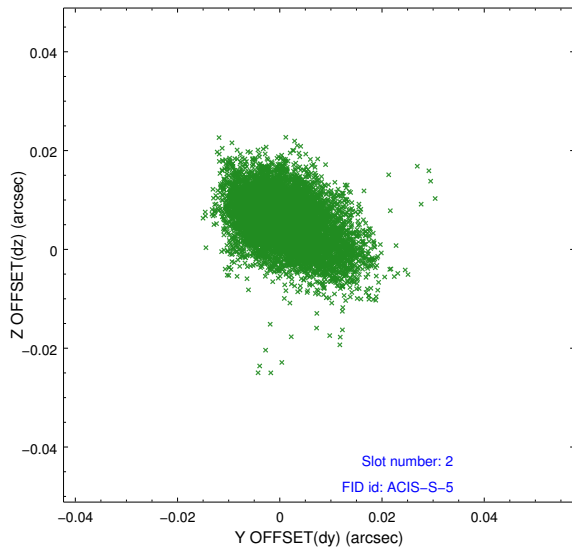
2.5.2 Slot 1



Time (s)



2.5.3 Slot 2



A Summary

A.1 Status

V&V Scientist	Jen Lauer
V&V Date (YYYY-MM-DD)	2012.12.06
V&V Edition	1
V&V Disposition and Status	OK
V&V Charge Time	35.587

A.2 Comments

This is a moving target. Users will need to run `sso_freeze` or similar software to position the events in the reference frame of the target.