

V&V Reference Report

L2 ASCDS Version : 8.4.5

Observation 375 - L2 Version 4
Chandra X-Ray Center

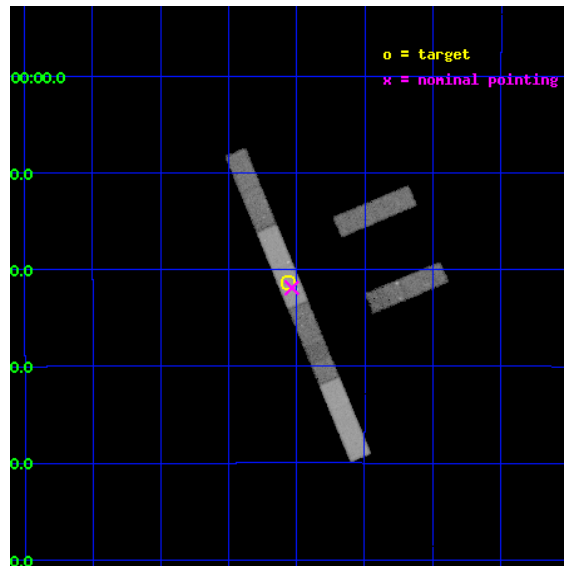
L2 Processing Date : Aug 28 2012

Contents

1	Front	2
2	OBI	3
2.1	OBI	3
2.1.1	Images	3
2.1.2	Bias	3
2.1.3	Parameters	4
2.1.4	Events	4
2.2	Compared Parameters	5
2.3	Aspect	6
2.4	Star Slots	9
2.4.1	Slot 3	9
2.4.2	Slot 4	10
2.4.3	Slot 5	11
2.4.4	Slot 6	12
2.4.5	Slot 7	13
2.5	FID Slots	14
2.5.1	Slot 0	14
2.5.2	Slot 1	15
2.5.3	Slot 2	16
A	Summary	17
A.1	Status	17
A.2	Comments	17

1 Front

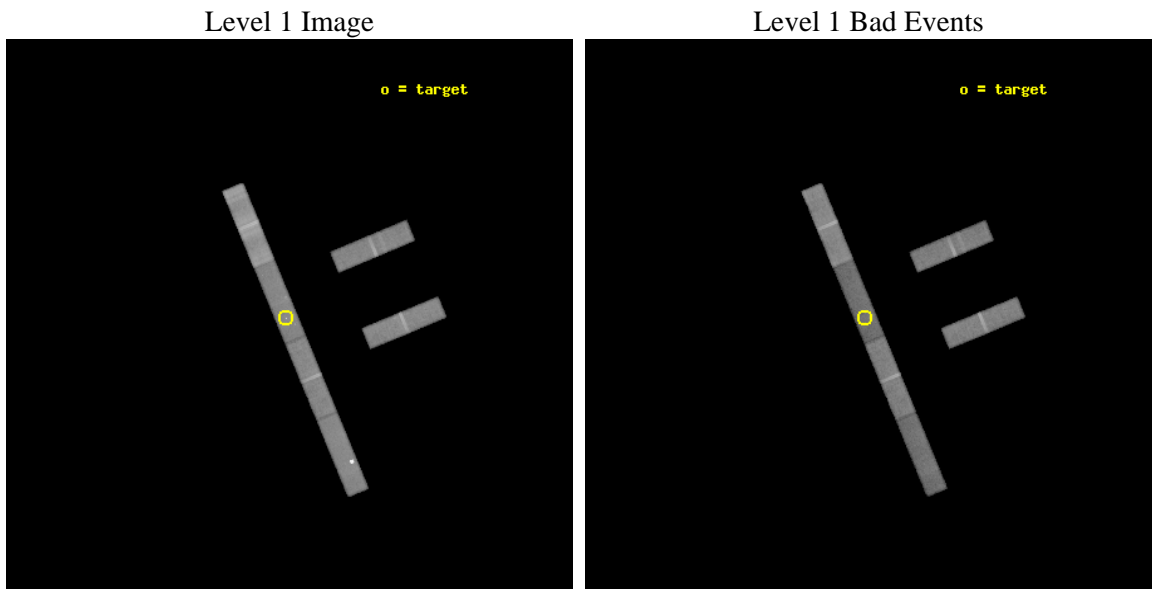
seq_num	700047	Sequence number
obs_id	375	Observation id
title	HIGH REDSHIFT QUASAR SPECTRA	Proposal title
observer	Dr. Stephen Murray	Principal investigator
object	HE 1104-1805	Source name
dtcycle	0	
cycle	P	events from which exps? Prim/Second/Both
ra_targ	166.639583	Observer's specified target RA [deg]
dec_targ	-18.356667	Observer's specified target Dec [deg]
ra_nom	166.63385098124	Nominal RA [deg]
dec_nom	-18.365021738523	Nominal Dec [deg]
roll_nom	247.38836484794	Nominal Roll [deg]
revision	4	Processing version of data
ontime	49194.158723354	Sum of GTIs [s]
livetime	47424.783176479	Livetime [s]
ontime2	49194.158723354	Sum of GTIs [s]
ontime3	49195.29973343	Sum of GTIs [s]
ontime5	49195.29973343	Sum of GTIs [s]
ontime6	49195.29973343	Sum of GTIs [s]
ontime7	49194.158723354	Sum of GTIs [s]
ontime8	49195.29973343	Sum of GTIs [s]
l2events	144724	Number of level 2 events



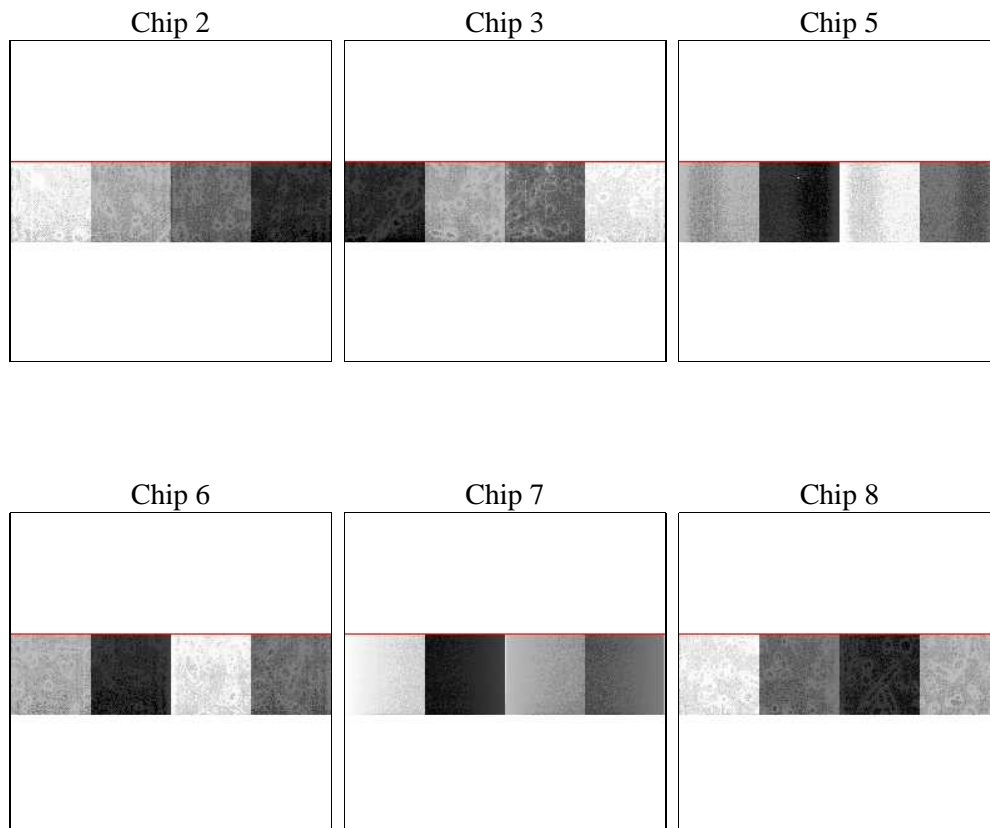
2 OBI

2.1 OBI

2.1.1 Images



2.1.2 Bias



2.1.3 Parameters

obi_num	1	Obi number	sched_exp_time	49000.000000	[s] Scheduled observation exposure time
ascdsver	8.4.5	Processing system revision	ontime	49194.158723354	Sum of GTIs [s]
caldsver	4.5.1.1	 	ontime2	49194.158723354	Sum of GTIs [s]
date	2012-08-28T23:45:44	Date and time of file creation	ontime3	49195.29973343	Sum of GTIs [s]
revision	4	Processing version of data	ontime5	49195.29973343	Sum of GTIs [s]
			ontime6	49195.29973343	Sum of GTIs [s]
			ontime7	49194.158723354	Sum of GTIs [s]
			ontime8	49195.29973343	Sum of GTIs [s]
			l1events	801753	Number of level 1 events

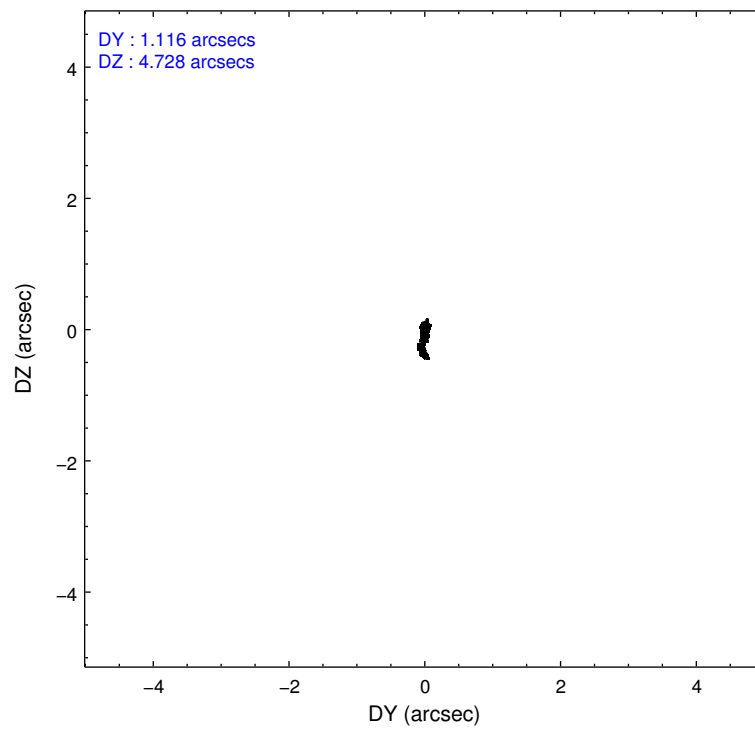
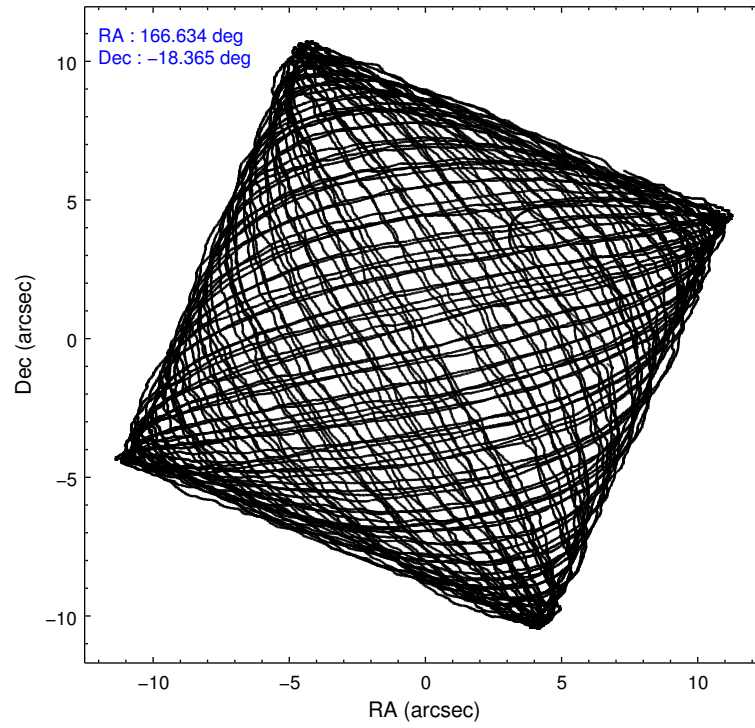
2.1.4 Events

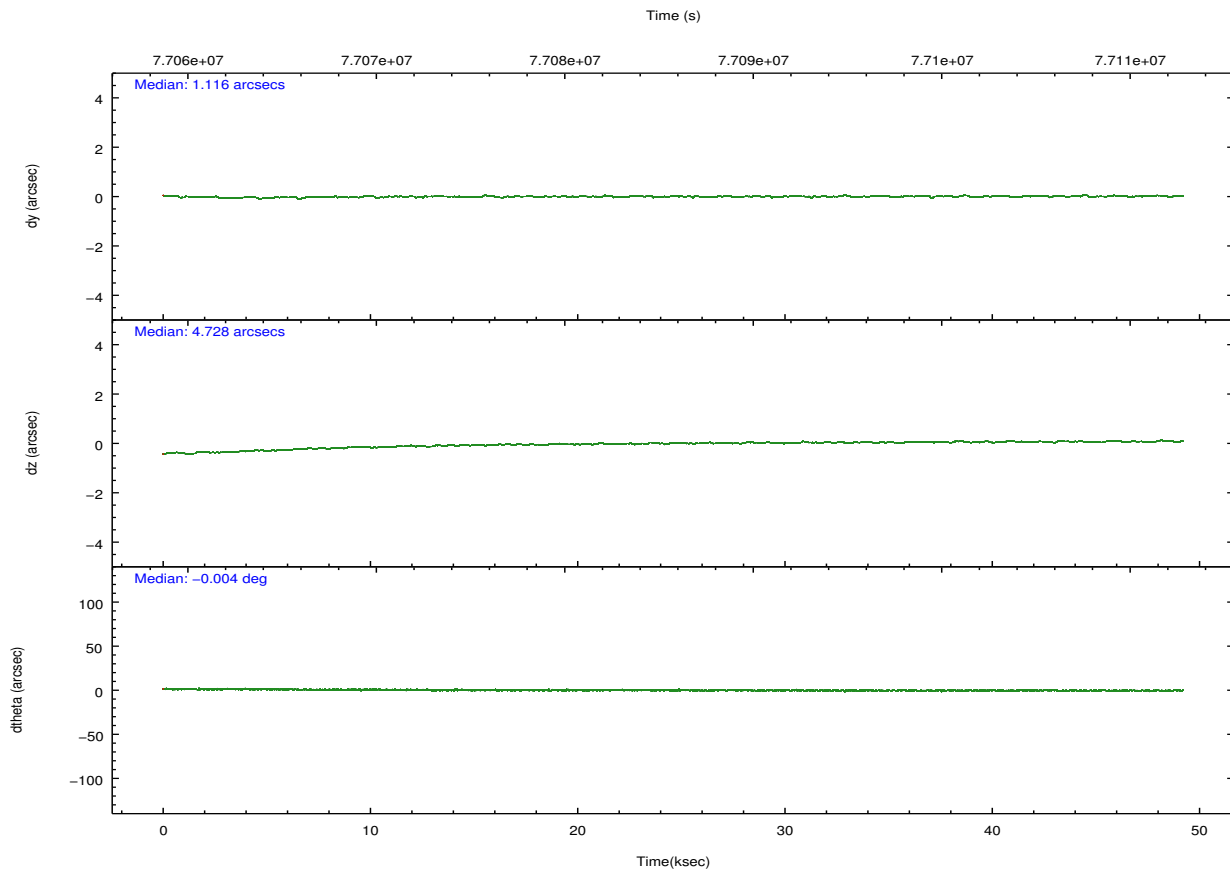
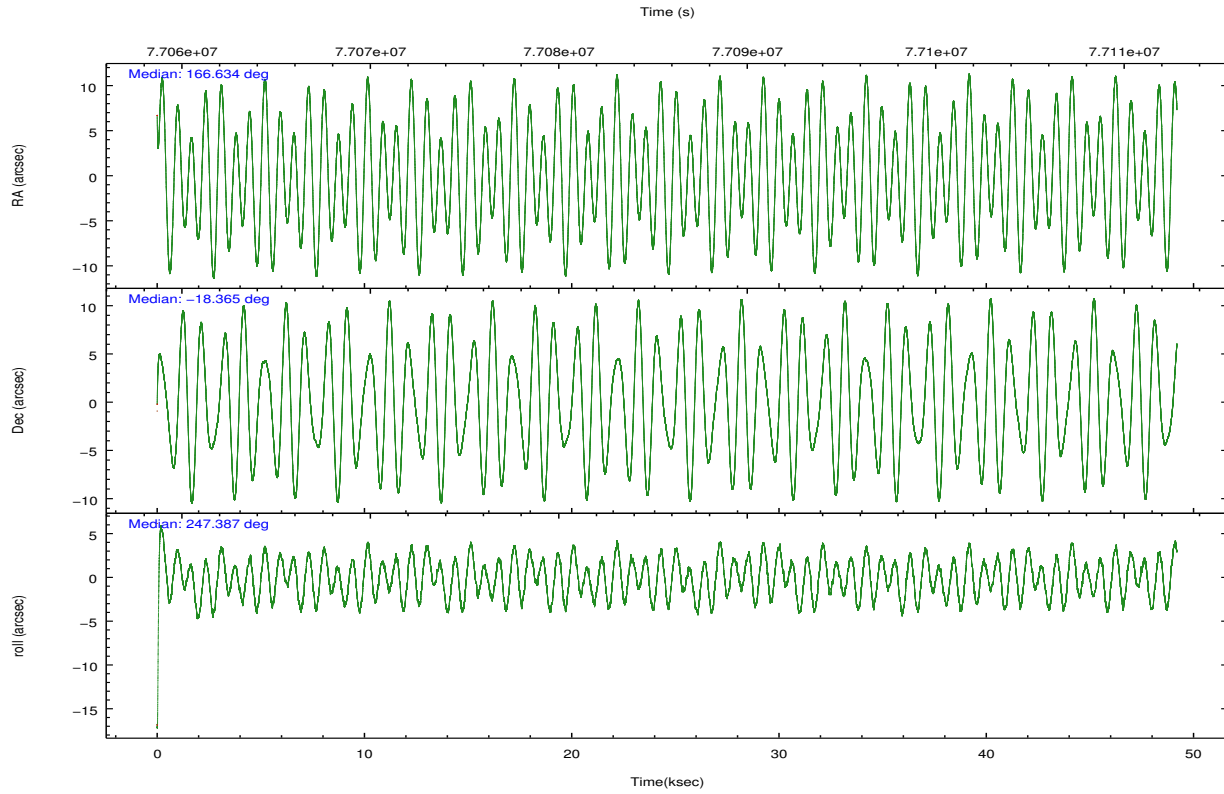
	ccd 2	ccd 3	ccd 5	ccd 6	ccd 7	ccd 8		ccd 2	ccd 3	ccd 5	ccd 6	ccd 7	ccd 8
level 1 events	120396	108792	145189	114240	102692	210444	grade 0 events	6803	5528	40029	6089	6338	23795
rejected events	105033	95448	56460	99518	53639	134108		5%	5%	27%	5%	6%	11%
rejected %	87%	87%	38%	87%	52%	63%	grade 1 events	33	23	212	29	109	165
								0%	0%	0%	0%	0%	0%
							grade 2 events	3092	2563	17418	2998	10474	12072
								2%	2%	11%	2%	10%	5%
							grade 3 events	1636	1523	3728	1752	5373	12444
								1%	1%	2%	1%	5%	5%
							grade 4 events	1701	1477	3674	1614	5157	10961
								1%	1%	2%	1%	5%	5%
							grade 5 events	2336	2517	8571	2917	9049	4426
								1%	2%	5%	2%	8%	2%
							grade 6 events	2200	2312	24260	2333	21902	17300
								1%	2%	16%	2%	21%	8%
							grade 7 events	102595	92849	47297	96508	44290	129281
								85%	85%	32%	84%	43%	61%

2.2 Compared Parameters

Parameter	Planned	Actual	Parameter	Planned	Actual
Instrument	ACIS	ACIS	Obspar format version number	7	7
Detector	ACIS-235678	ACIS-235678	Obspar file type	PREDICTED	ACTUAL
Grating	NONE	NONE	Obspar update status	NONE	UPDATED
Data mode	VFAINT	VFAINT	Number of optional ACIS chips dropped	0	0
Observation mode	POINTING	POINTING	On-chip summing requested	N	N
[deg] Pointing RA	166.630004	166.6338509812441	Subarray requested	CUSTOM	1/4
[deg] Pointing Dec	-18.337849	-18.36502173852292	Subarray start row	383	383
[deg] Pointing Roll	247.230536	247.388364847944	Subarray row count	256	256
[mm] SIM focus pos	-0.684267	-0.6828225247311905	Alternating exposures requested	N	N
[mm] SIM defocus	0	0.001444936568705701	[s] Primary exposure time	0.000000	1.1
[mm] SIM translation stage pos	-190.132523	-190.1400660498719			
[mm] SIM translation stage offset	0	0.00754346686406393			
[s] Observation start time (MET)	77061342.184000	77060367.20075101			
Observation start date	2000-06-10T21:54:38	2000-06-10T21:39:27			
[s] Observation end time (MET)	77110342.184000	77110730.06510501			
Observation end date	2000-06-11T11:31:18	2000-06-11T11:38:50			
Read mode	TIMED	TIMED			

2.3 Aspect



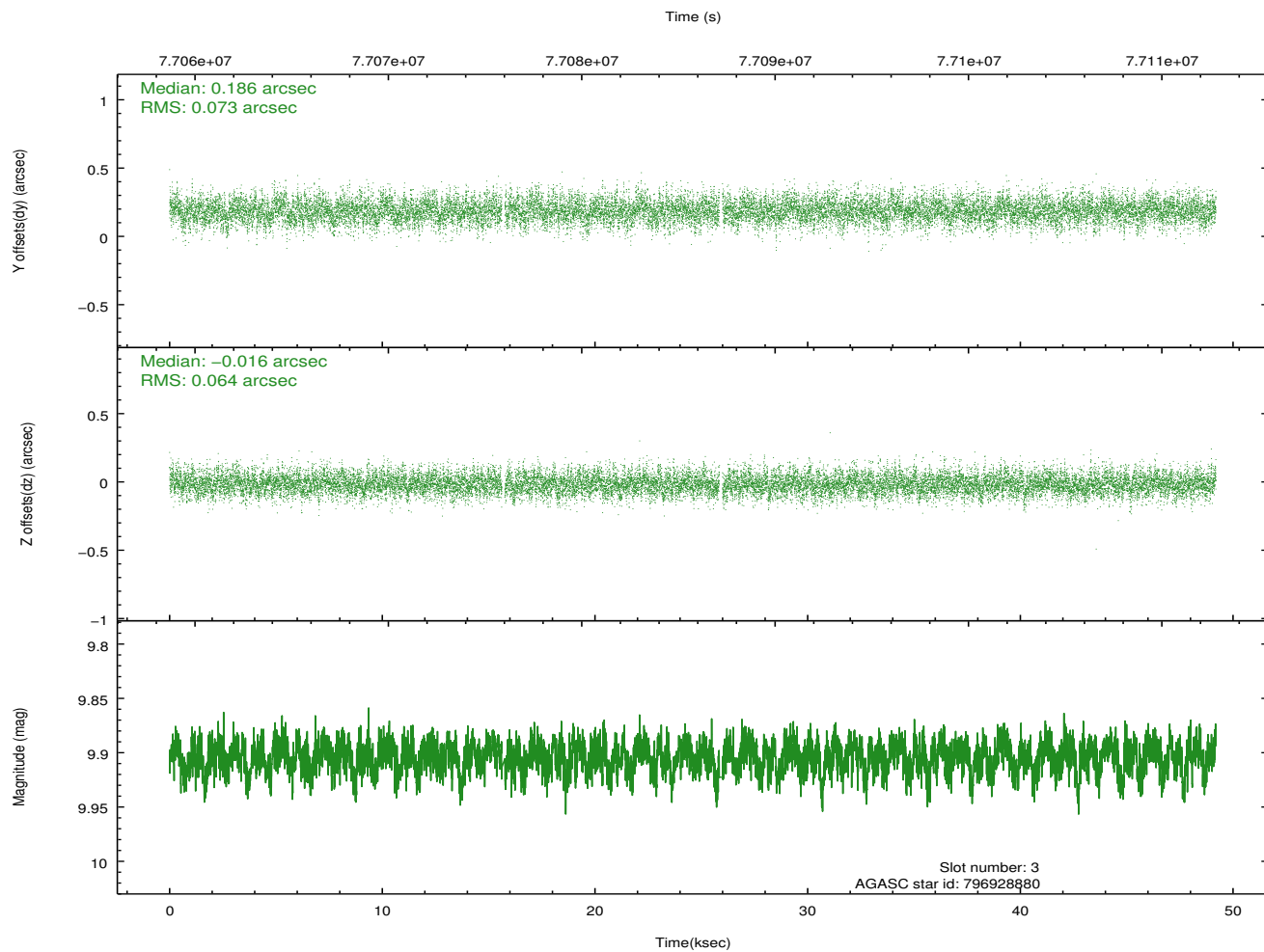
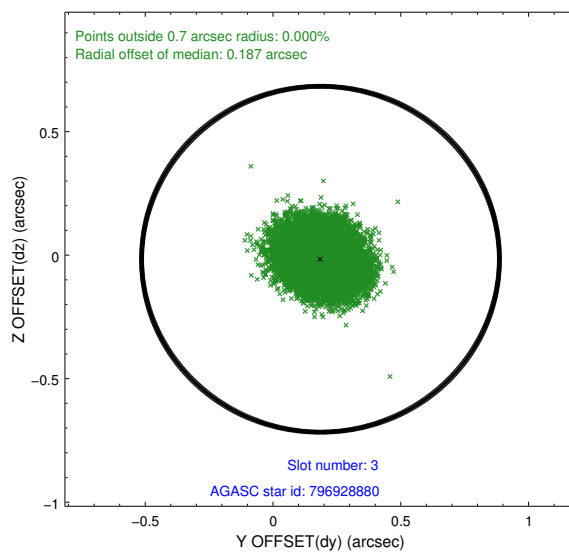
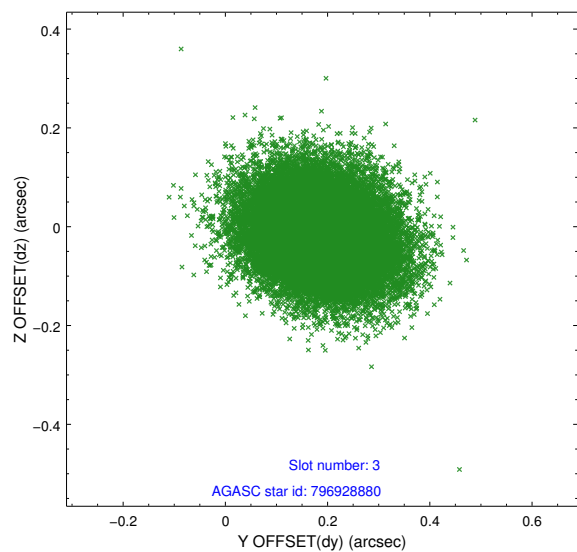


Slot Statistics

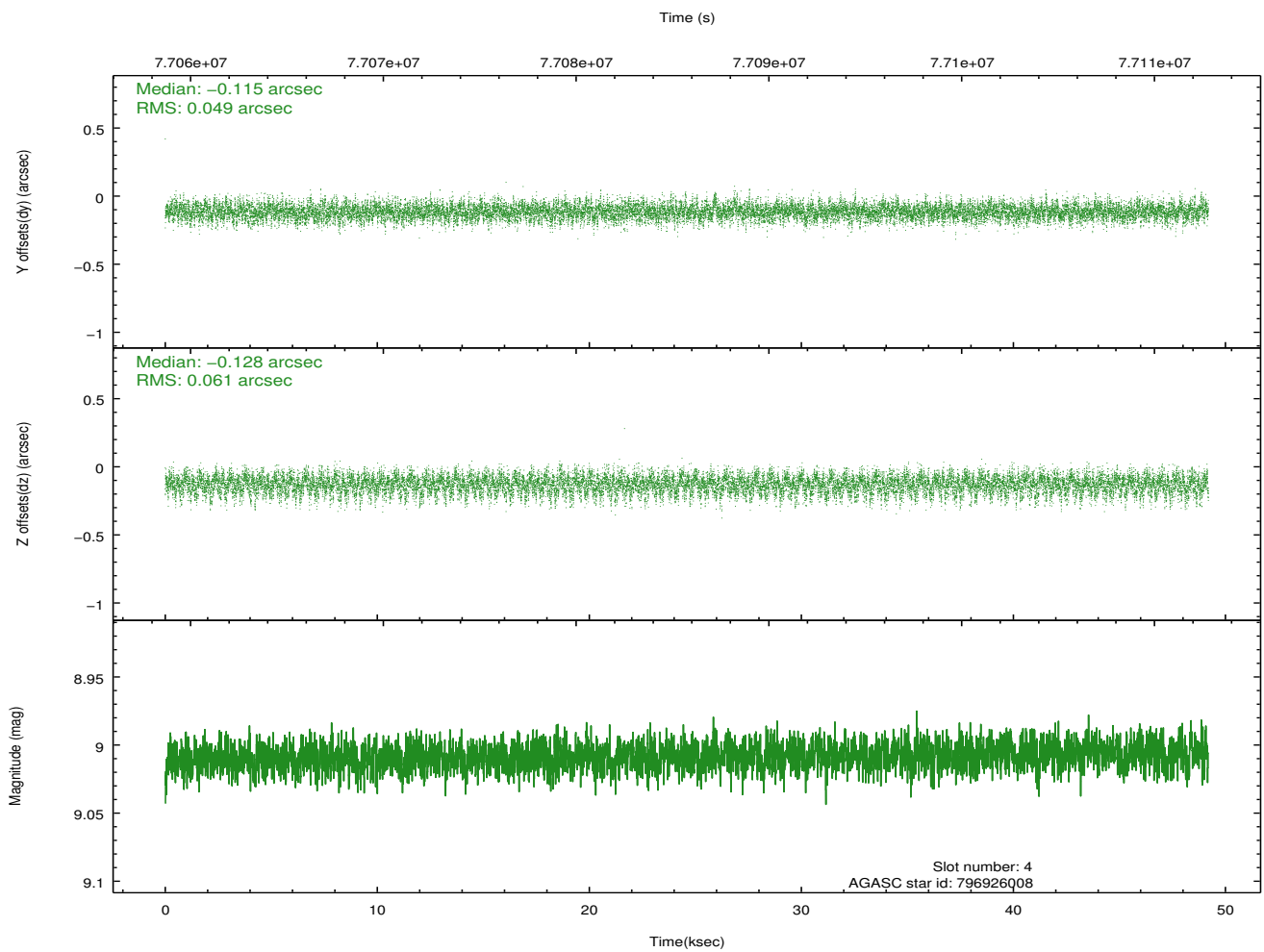
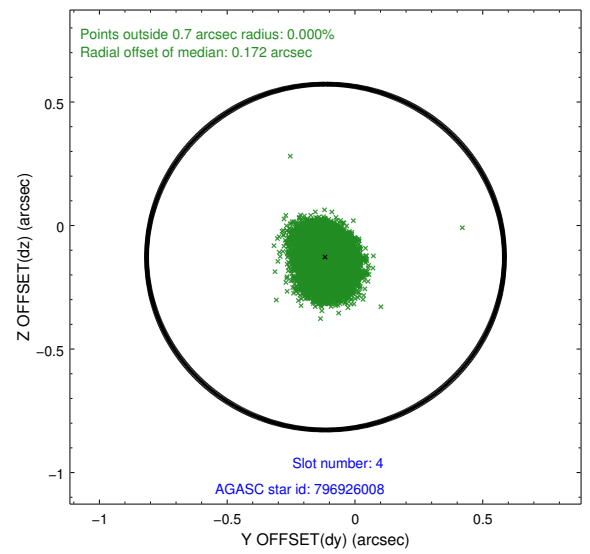
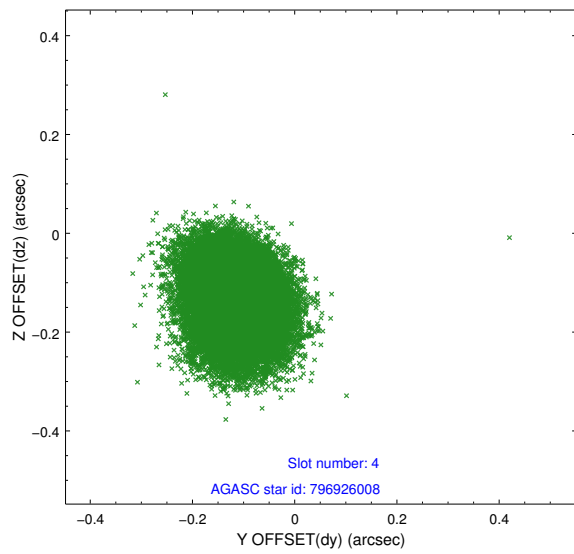
slot	status	id	mag	n_pts	med_dy	med_dz	dr1	dr2	ra	dec	mean_y	mean_z
0	FID	ACIS-S-2	7.11	11998	-0.030	-0.008	0.007	0.012	0.000000	0.000000	-753.74	-1725.79
1	FID	ACIS-S-4	7.21	11997	0.000	0.017	0.006	0.011	0.000000	0.000000	2159.58	182.73
2	FID	ACIS-S-5	7.23	11997	-0.002	0.000	0.007	0.013	0.000000	0.000000	-1806.57	176.38
3	GUIDE	796928880	9.90	23839	0.186	-0.016	0.103	0.170	166.621408	-18.801010	1549.29	618.85
4	GUIDE	796926008	9.01	23994	-0.115	-0.128	0.083	0.136	166.216530	-17.707209	-1542.94	-2185.25
5	GUIDE	796923960	9.17	23986	-0.130	0.045	0.092	0.153	167.114946	-18.113690	-1384.25	1218.92
6	GUIDE	796931344	10.38	23971	0.075	0.096	0.164	0.265	166.706582	-18.871960	1672.28	985.41
7	GUIDE	796927416	10.15	23975	-0.013	0.008	0.127	0.208	166.806842	-18.379218	-95.96	615.34

2.4 Star Slots

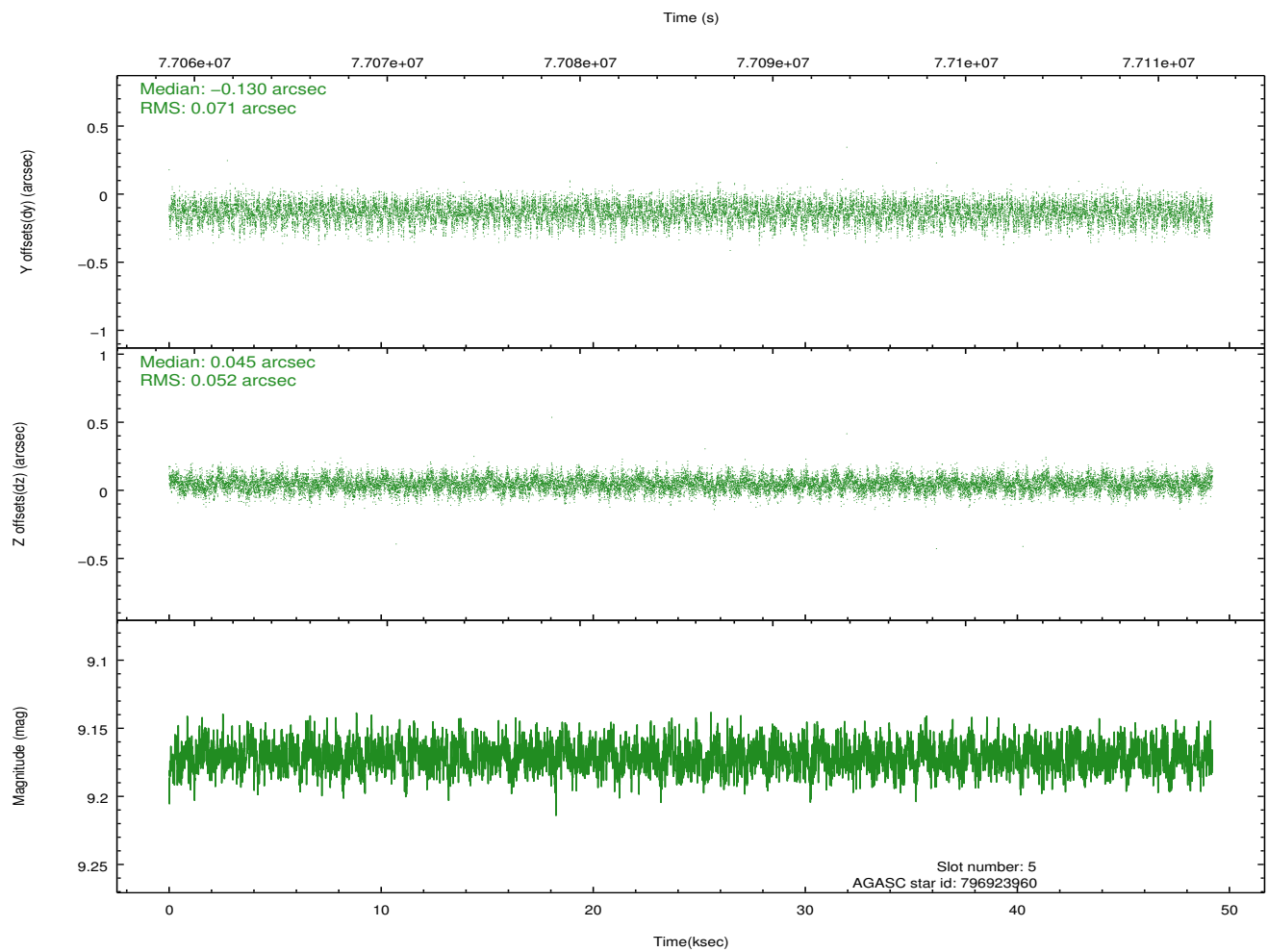
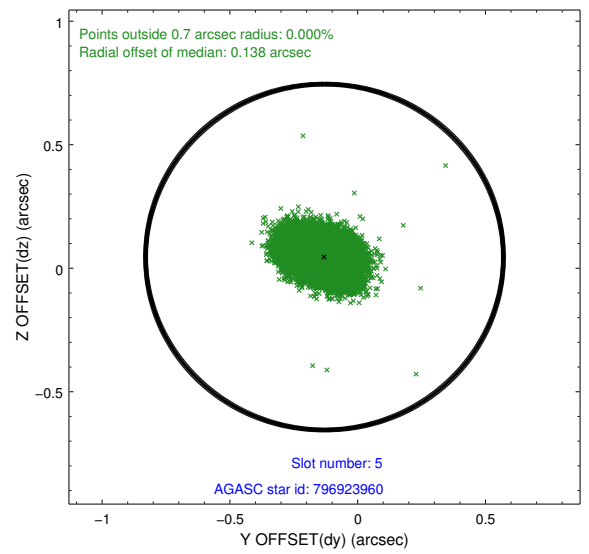
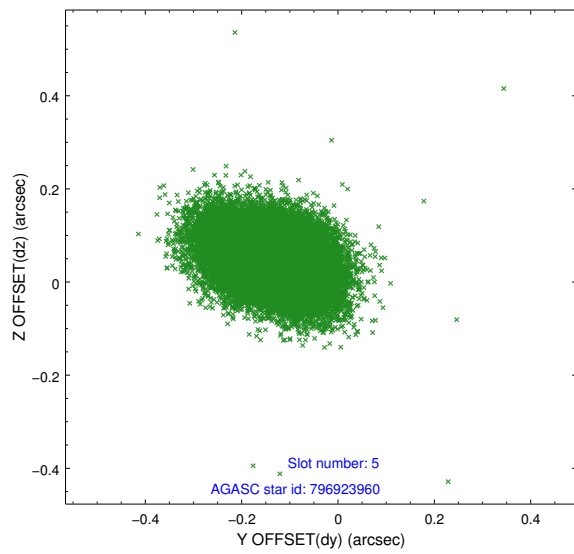
2.4.1 Slot 3



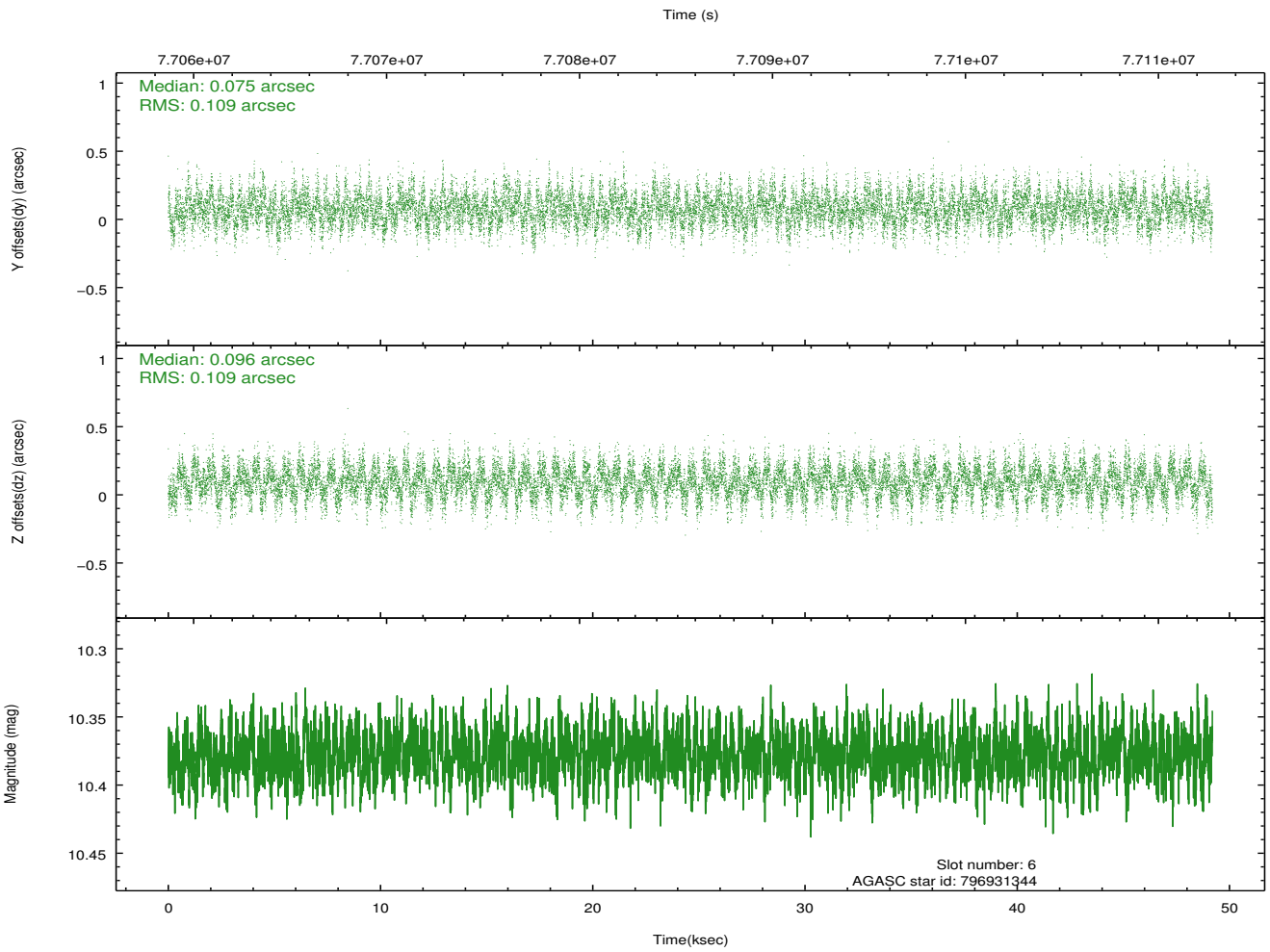
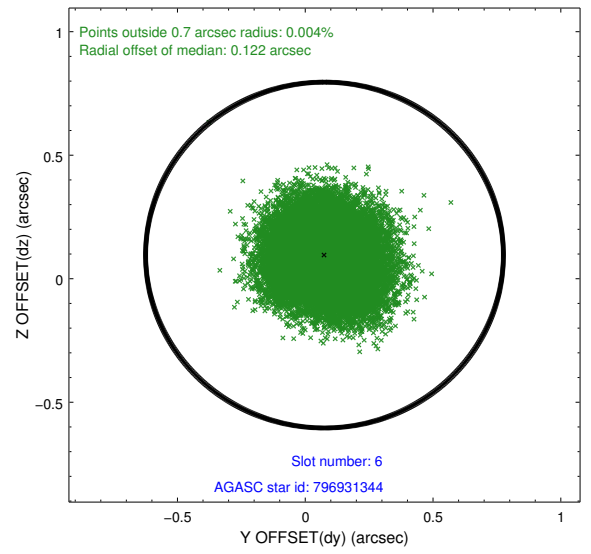
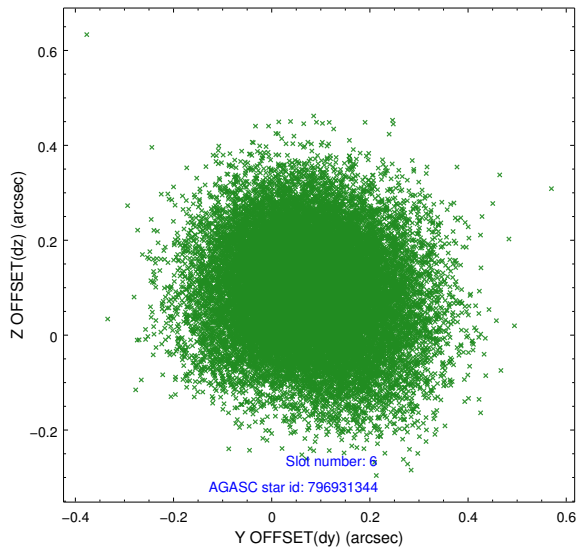
2.4.2 Slot 4



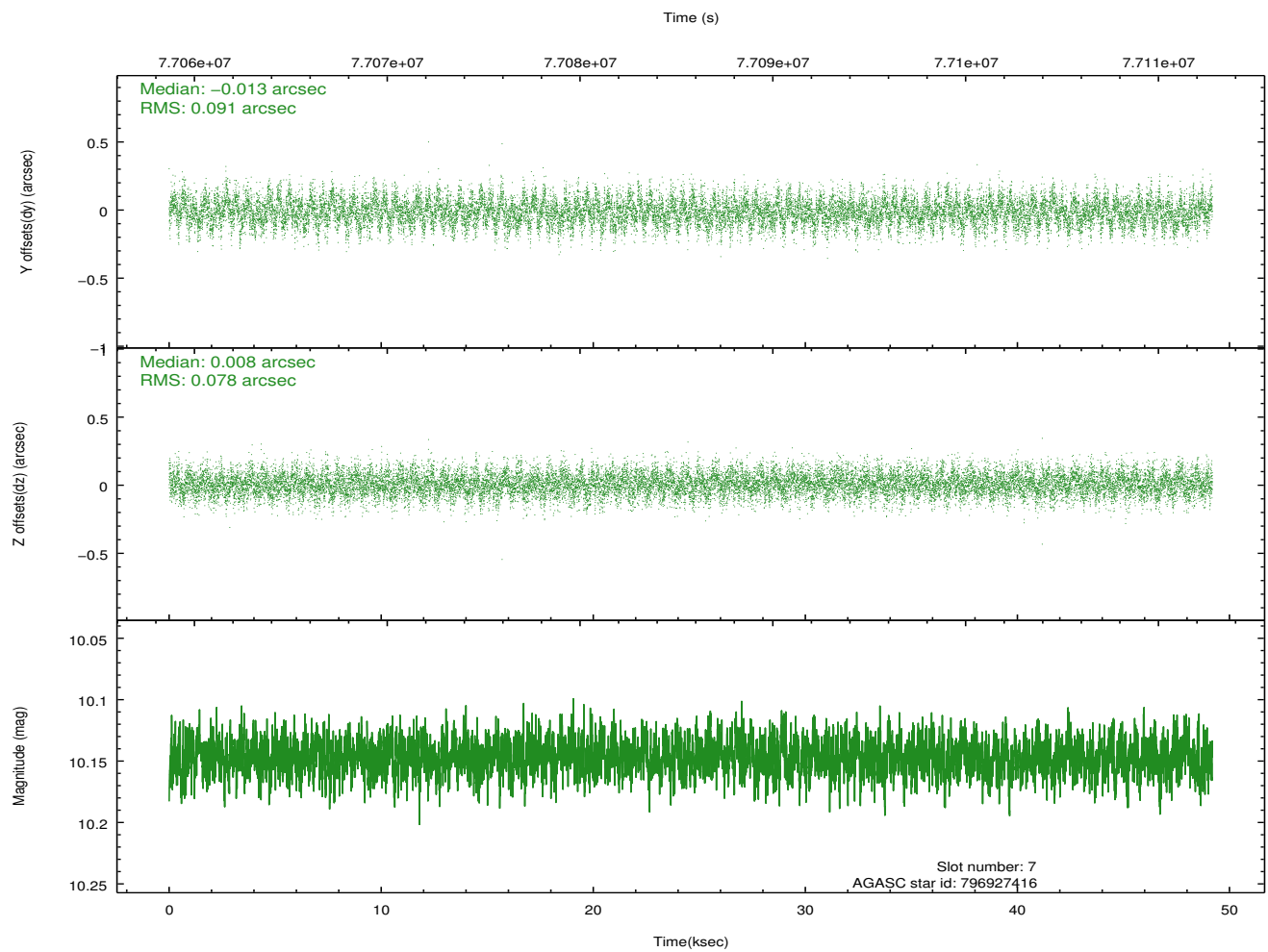
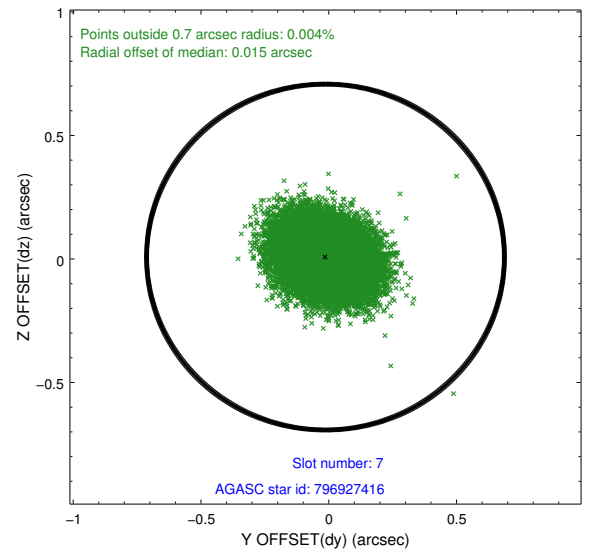
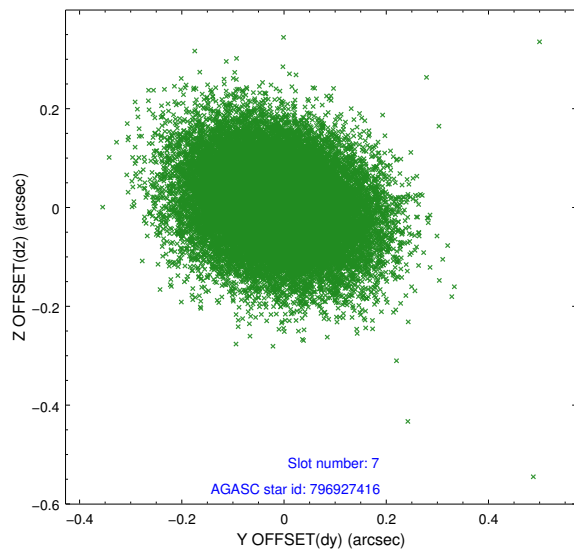
2.4.3 Slot 5



2.4.4 Slot 6

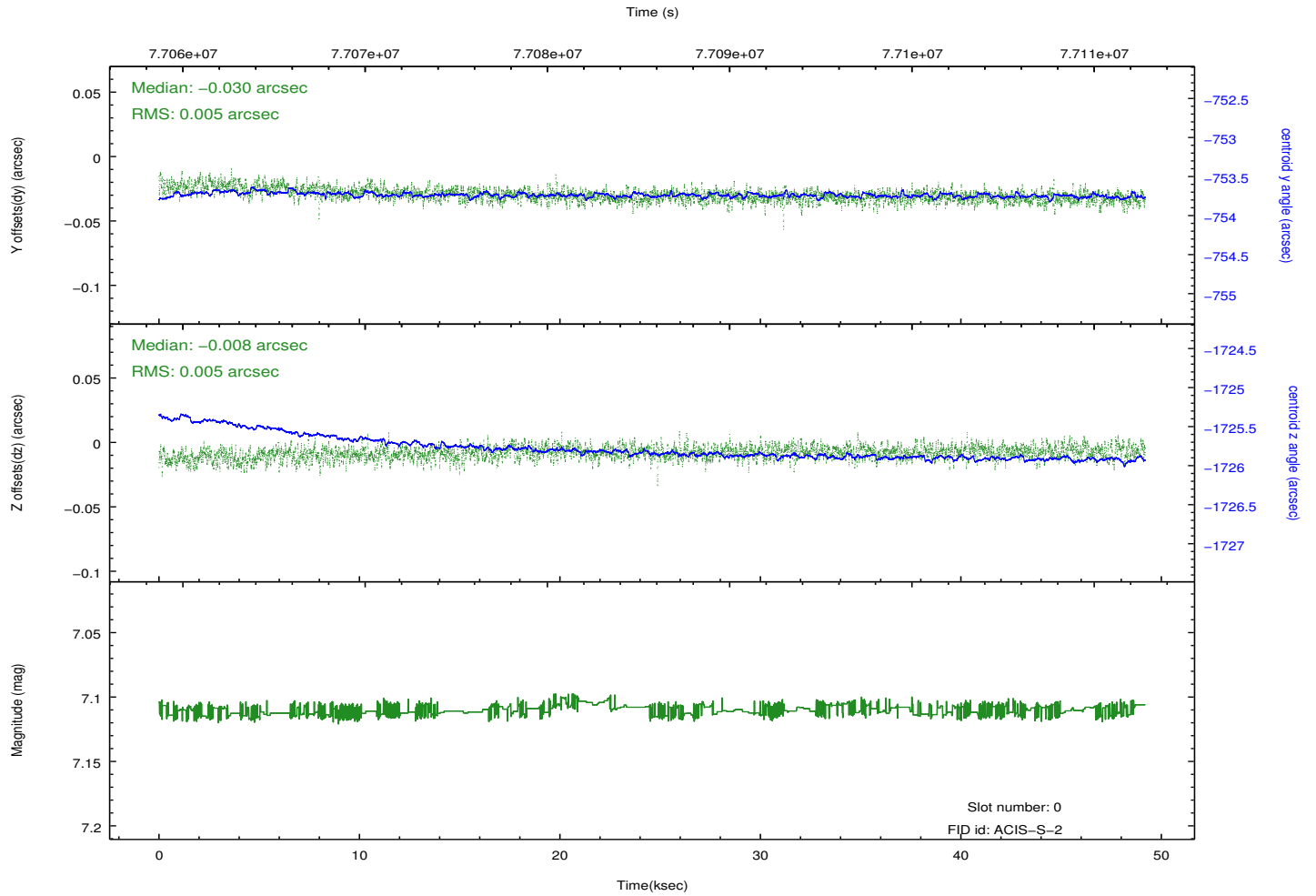
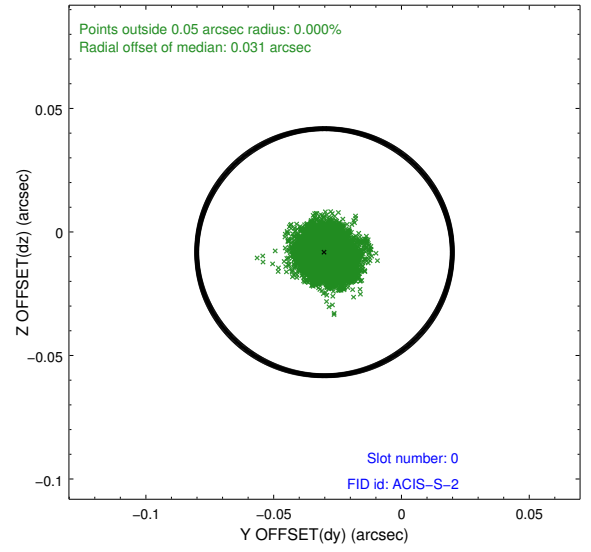
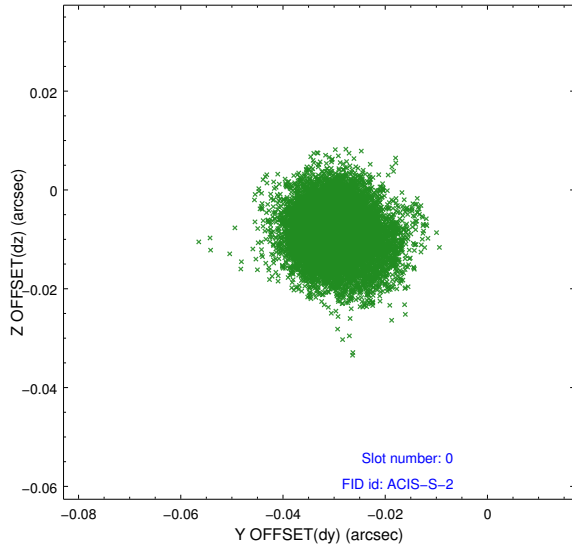


2.4.5 Slot 7

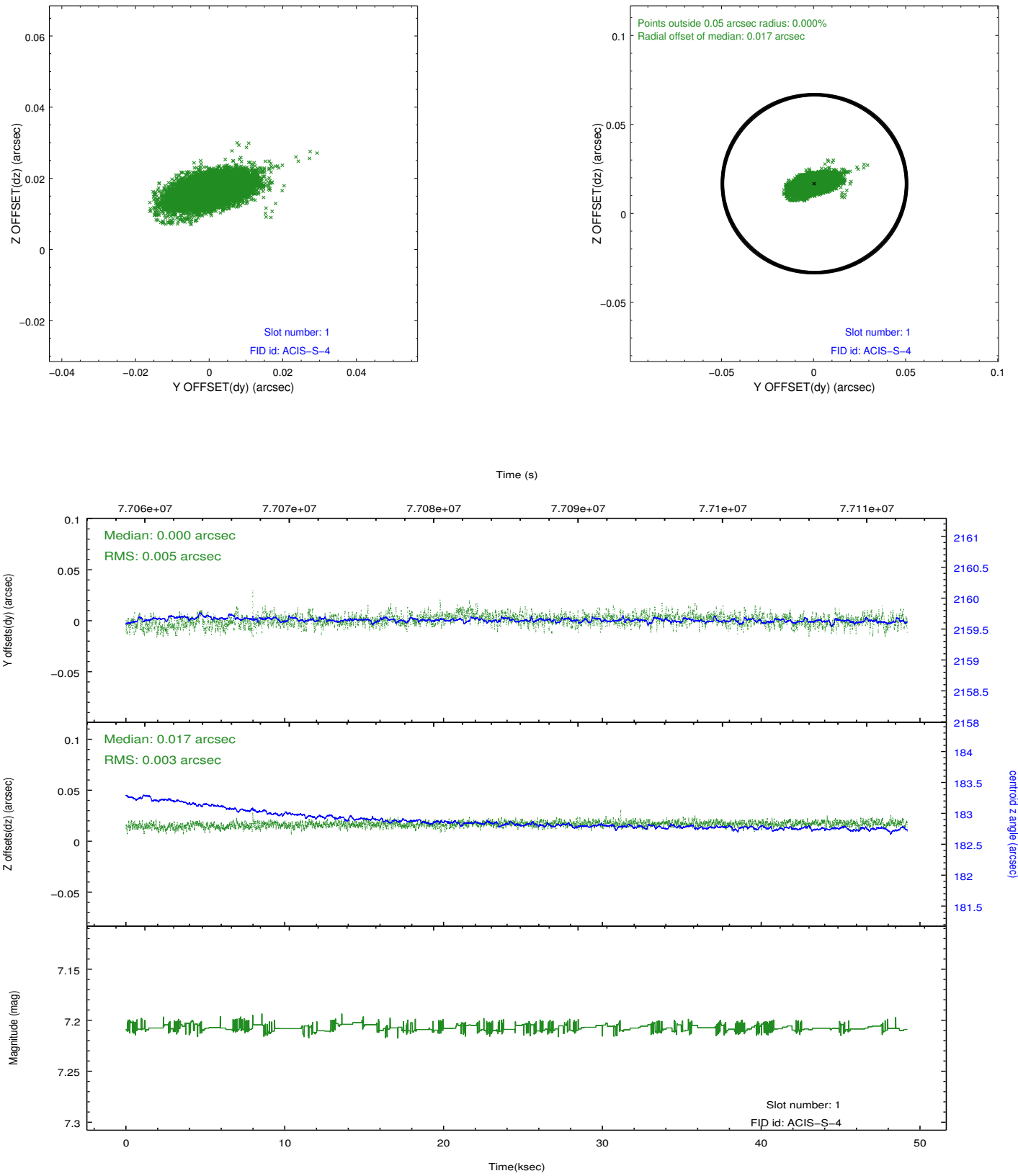


2.5 FID Slots

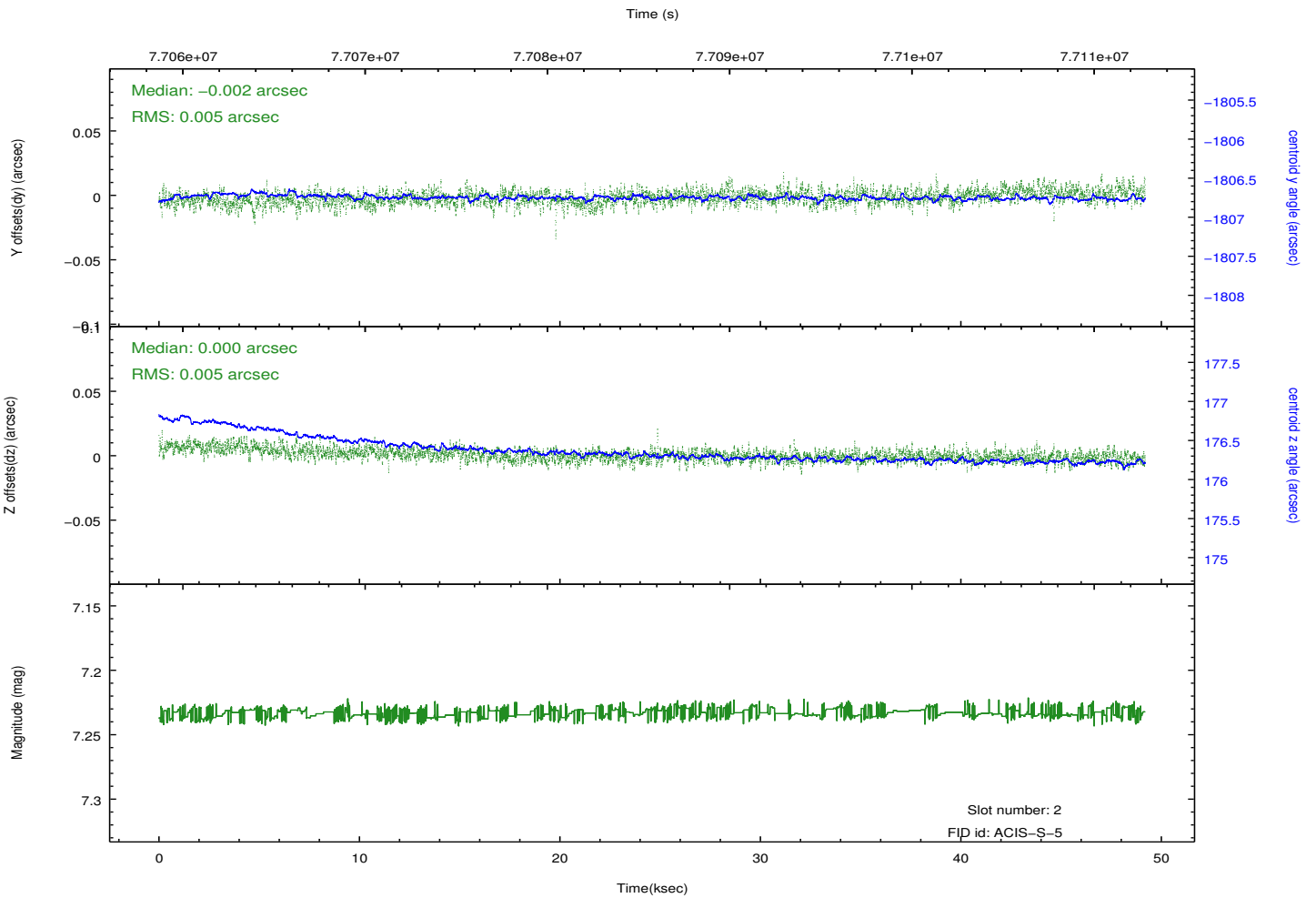
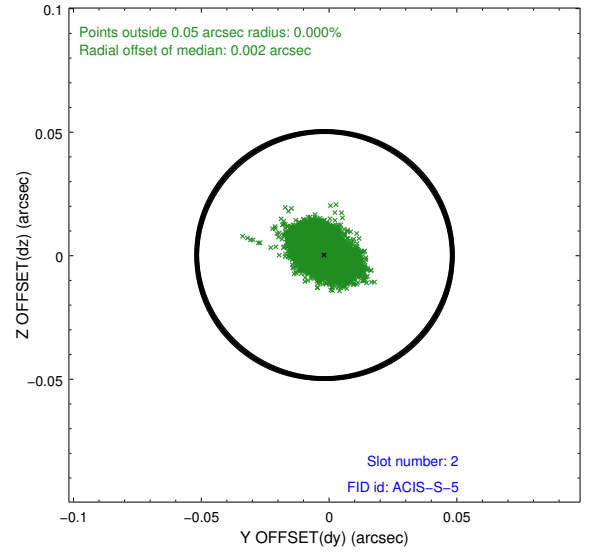
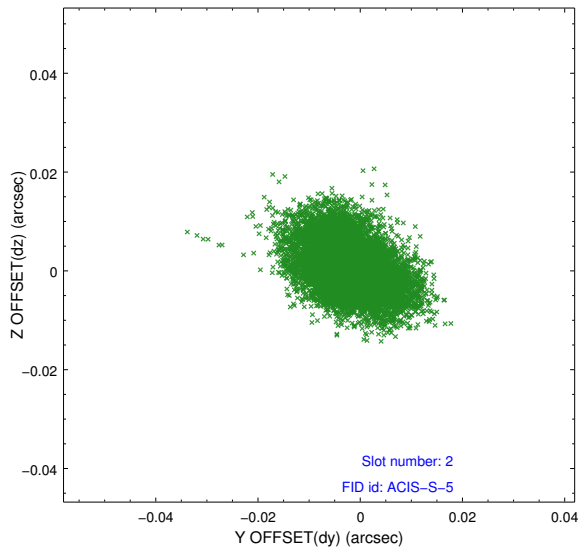
2.5.1 Slot 0



2.5.2 Slot 1



2.5.3 Slot 2



A Summary

A.1 Status

V&V Scientist	Jen Lauer
V&V Date (YYYY-MM-DD)	2012.08.31
V&V Edition	1
V&V Disposition and Status	OK
V&V Charge Time	49.157

A.2 Comments