

V&V Reference Report

L2 ASCDS Version : 8.4.5

Observation 3775 - L2 Version 3
Chandra X-Ray Center

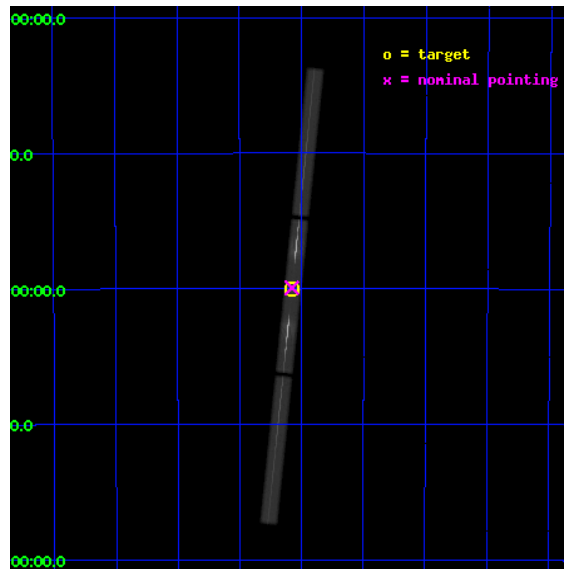
L2 Processing Date : Oct 24 2012

Contents

1	Front	2
2	OBI	3
2.1	OBI	3
2.1.1	Images	3
2.1.2	Parameters	4
2.1.3	Events	4
2.2	Compared Parameters	5
2.3	Aspect	6
2.4	Star Slots	9
2.4.1	Slot 3	9
2.4.2	Slot 4	10
2.4.3	Slot 5	11
2.4.4	Slot 6	12
2.4.5	Slot 7	13
2.5	FID Slots	14
2.5.1	Slot 0	14
2.5.2	Slot 1	15
2.5.3	Slot 2	16
3	Gratings	17
3.1	LETG Arm	17
A	Summary	19
A.1	Status	19
A.2	Comments	19

1 Front

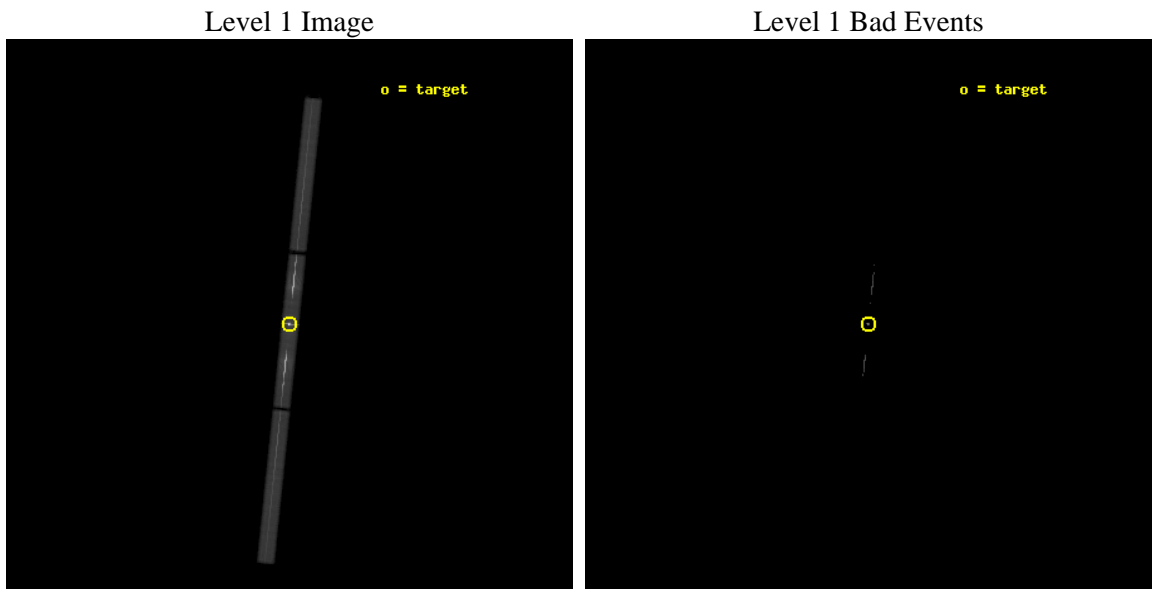
seq_num	300100	Sequence number
obs_id	3775	Observation id
title	MULTIWAVELNGTH TARGET OF OPPORTUNITY OBSERVATIONS OF A BRIGHT NOVA IN OUTBURST	Proposal title
observer	Regents' Professor Sumner Starrfield	Principal investigator
object	V4743 Sgr	Source name
ra_targ	285.289083	Observer's specified target RA [deg]
dec_targ	-22.001639	Observer's specified target Dec [deg]
ra_nom	285.28871008814	Nominal RA [deg]
dec_nom	-21.997039023598	Nominal Dec [deg]
roll_nom	95.870166170457	Nominal Roll [deg]
revision	3	Processing version of data
ontime	25071.501056314	[s]
liveltime	24754.046211795	Ontime multiplied by DTCOR
l2events	2850848	Number of level 2 events



2 OBI

2.1 OBI

2.1.1 Images



2.1.2 Parameters

obi_num	0	Obi number	sched_exp_time	25241.000000	[s] Scheduled observation exposure time
ascdsver	8.4.5	Processing system revision	ontime	25071.501056314	[s]
caldbver	4.5.2	 	l1events	3308541	Number of level 1 events
date	2012-10-24T20:11:21	Date and time of file creation			
revision	3	Processing version of data			

2.1.3 Events

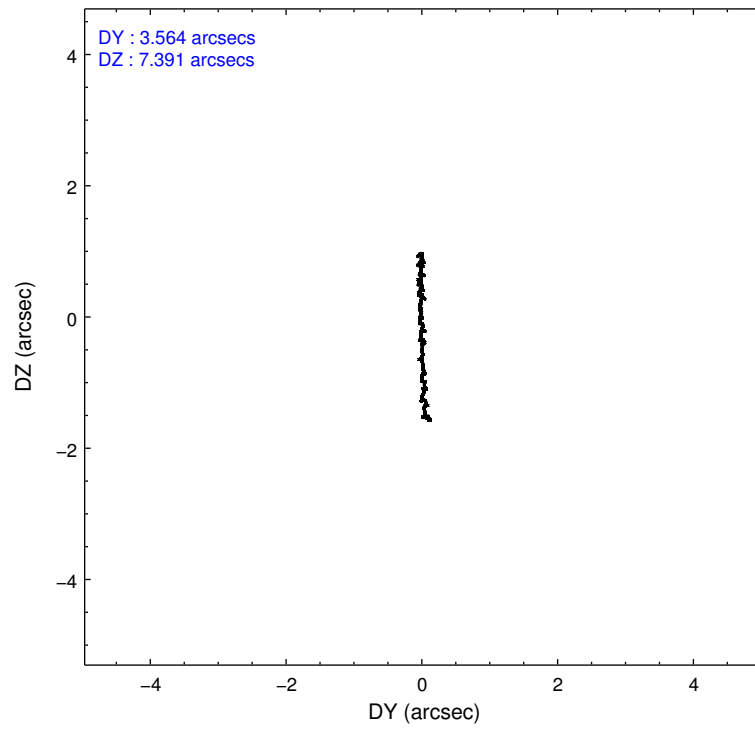
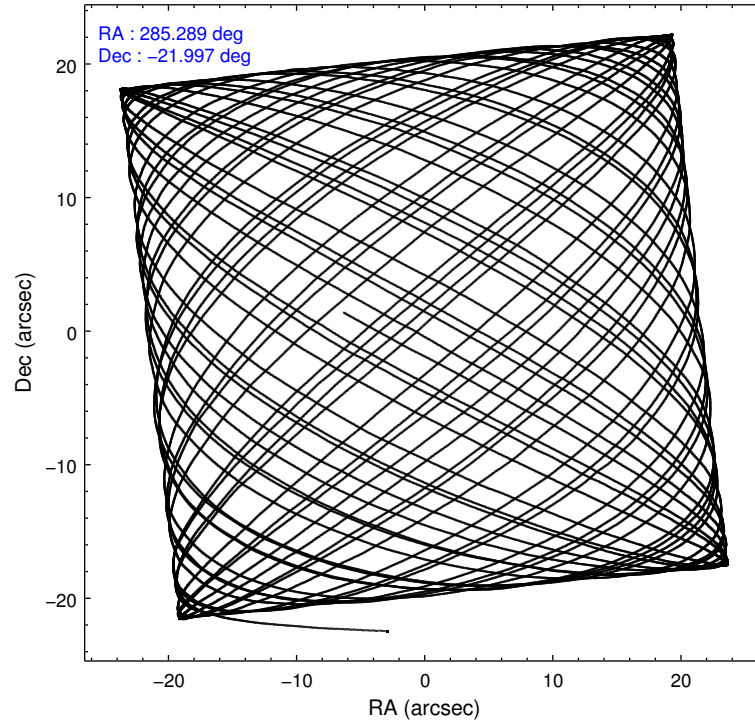
Level 1 Events

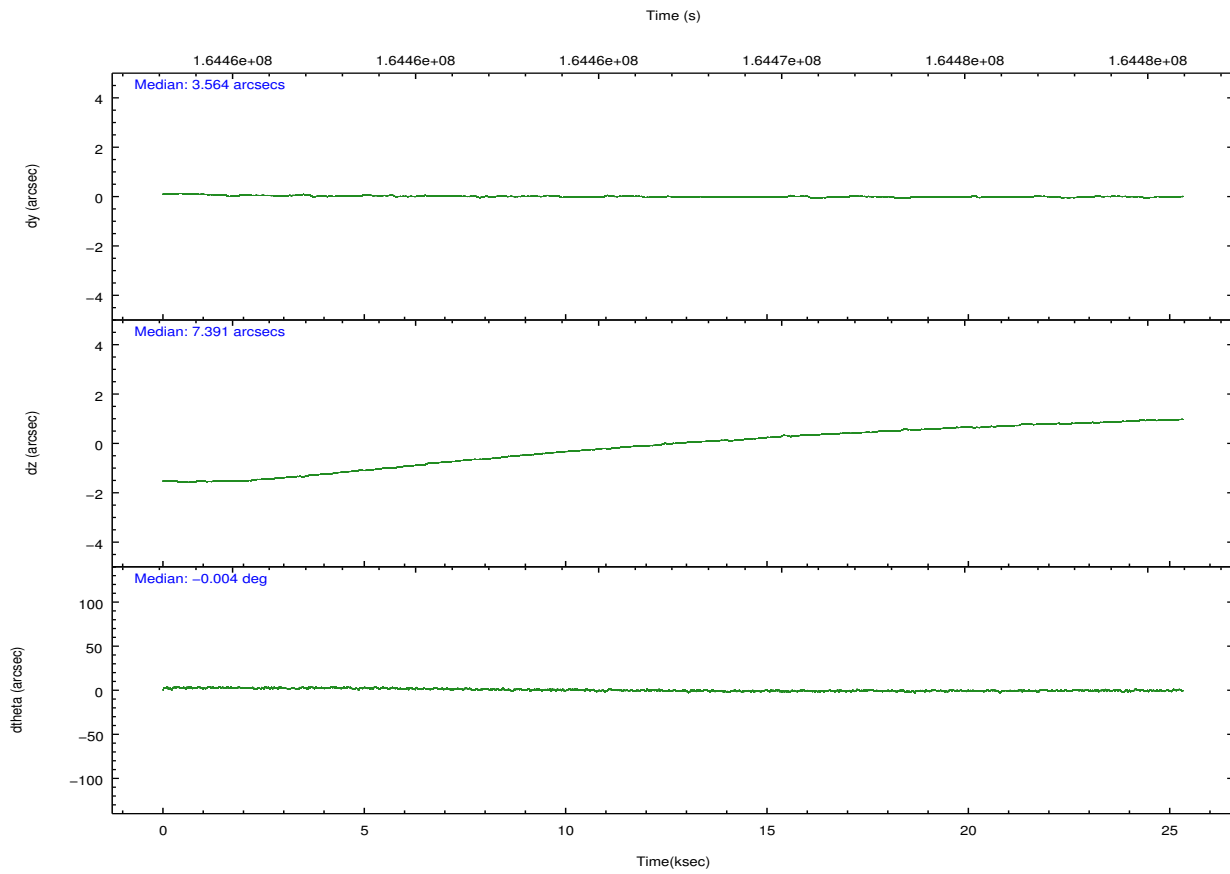
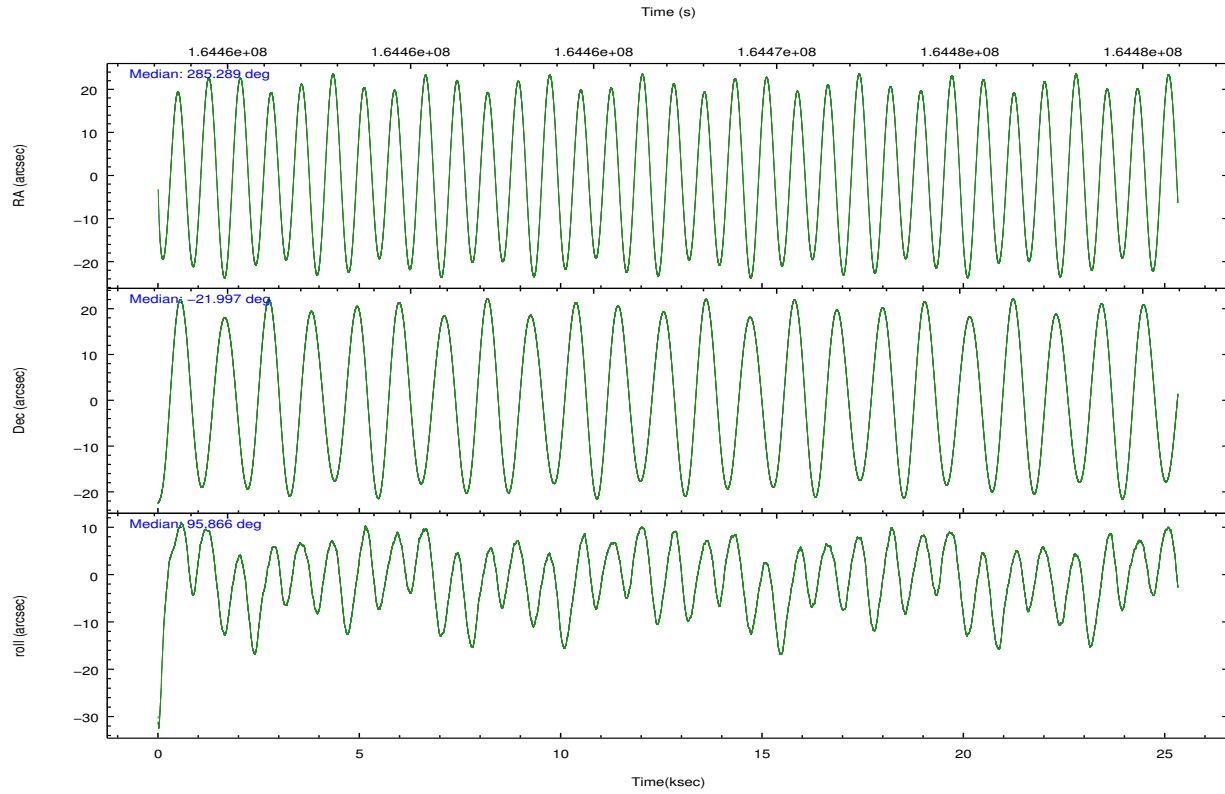
	segment 1	segment 2	segment 3
level 1 events	598899	2107123	602519
rejected events	2690	5845	2666
rejected %	0%	0%	0%

2.2 Compared Parameters

Parameter	Planned	Actual	Parameter	Planned	Actual
Instrument	HRC	HRC	Obspar format version number	7	7
Detector	HRC-S	HRC-S	Obspar file type	PREDICTED	ACTUAL
Grating	LETG	LETG	Obspar update status	NONE	UPDATED
Data mode	OBSERVING	OBSERVING			
Observation mode	POINTING	POINTING			
[deg] Pointing RA	285.308010	285.2887100881352			
[deg] Pointing Dec	-22.019287	-21.99703902359837			
[deg] Pointing Roll	95.810075	95.87016617045734			
[mm] SIM focus pos	-1.429586	-1.428180813131781			
[mm] SIM defocus	0.1037507710433287	0.1051558262725154			
[mm] SIM translation stage pos	250.455976	250.466033080201			
[mm] SIM translation stage offset	0	-0.01005468664627074			
[s] Observation start time (MET)	164454455.184000	164453412.27295			
Observation start date	2003-03-19T09:46:31	2003-03-19T09:30:12			
[s] Observation end time (MET)	164479696.184000	164480470.22409			
Observation end date	2003-03-19T16:47:12	2003-03-19T17:01:10			

2.3 Aspect



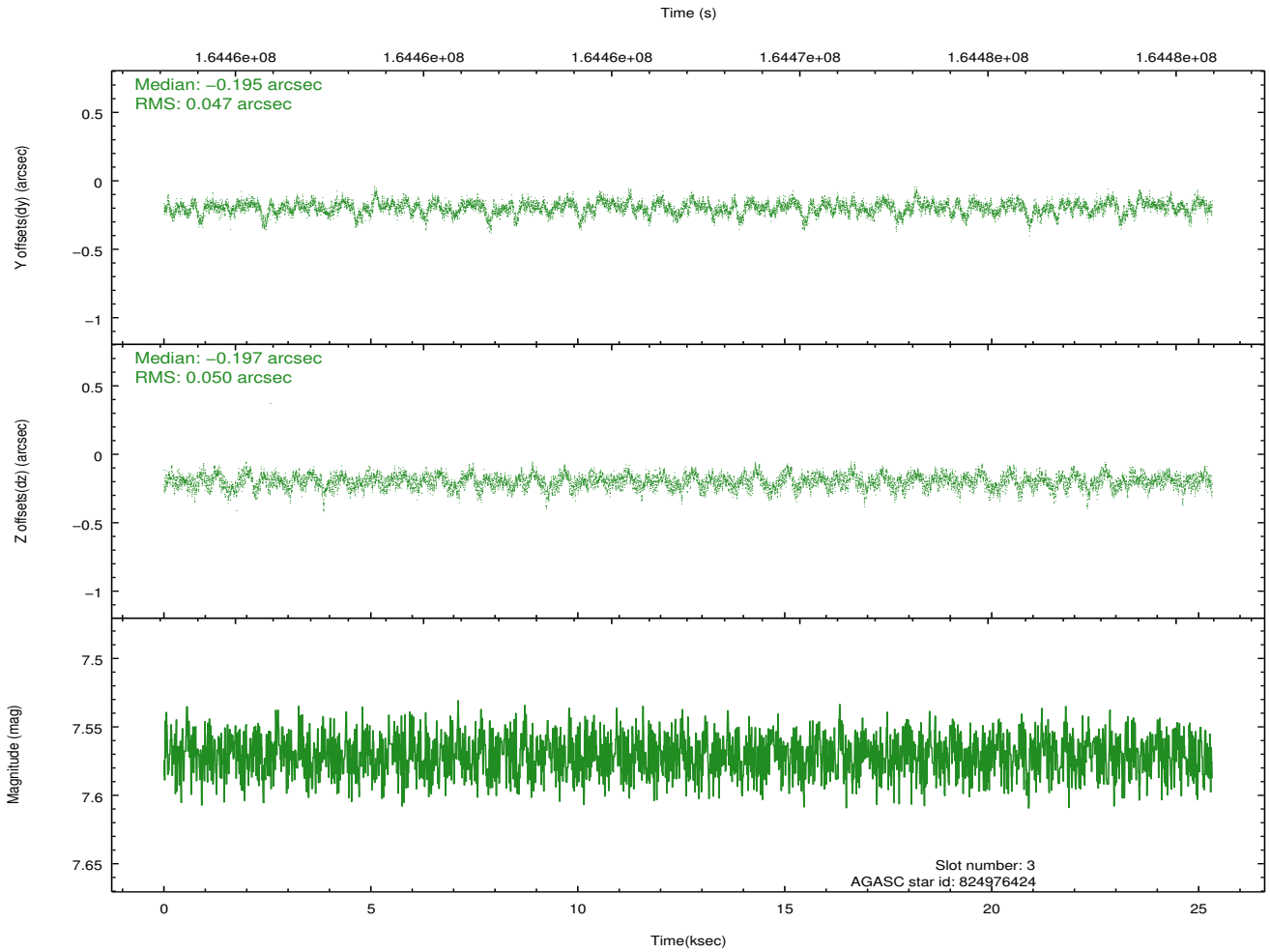
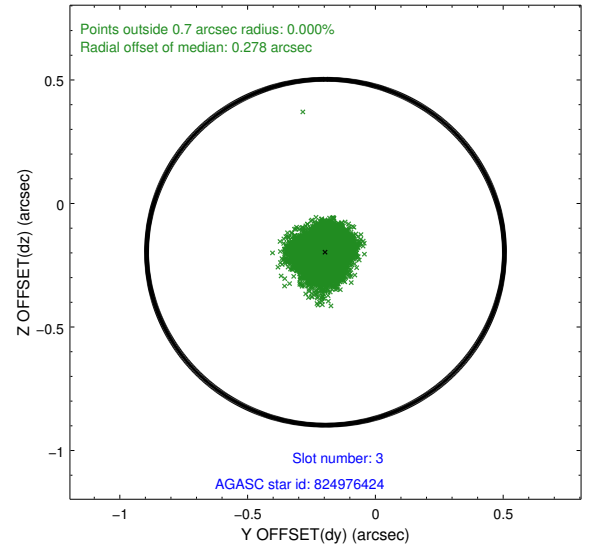
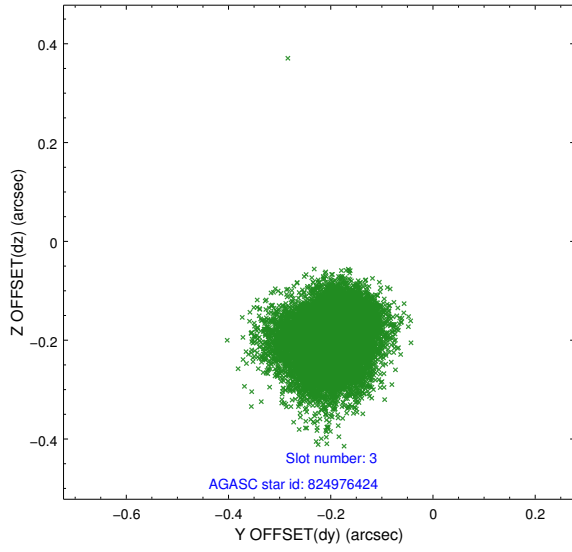


Slot Statistics

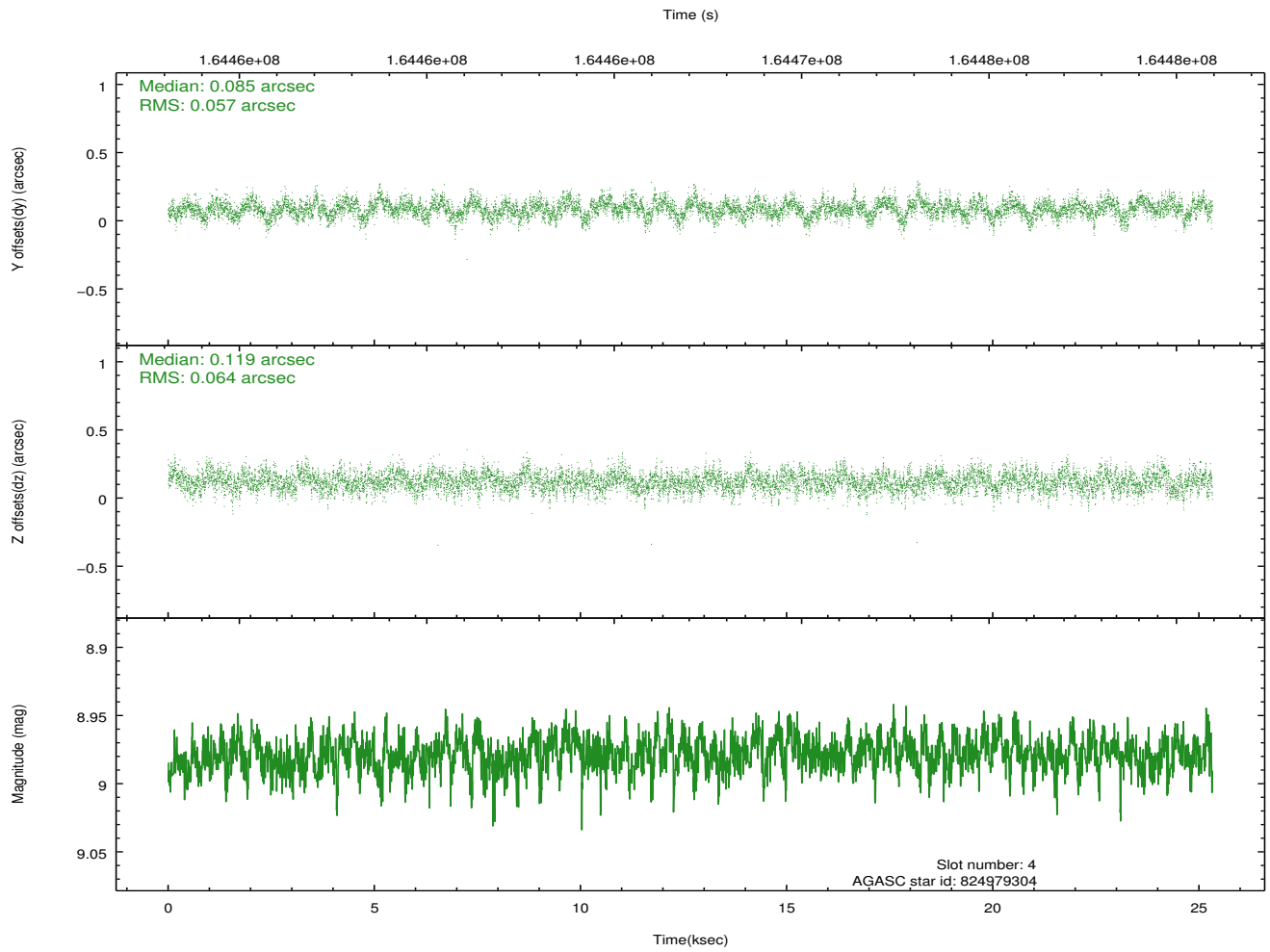
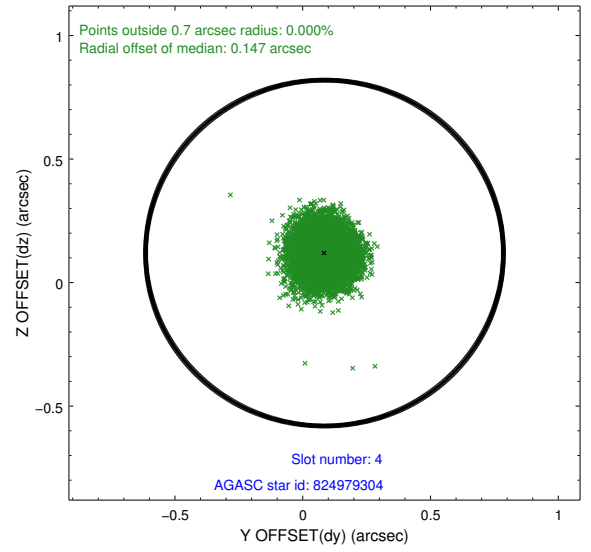
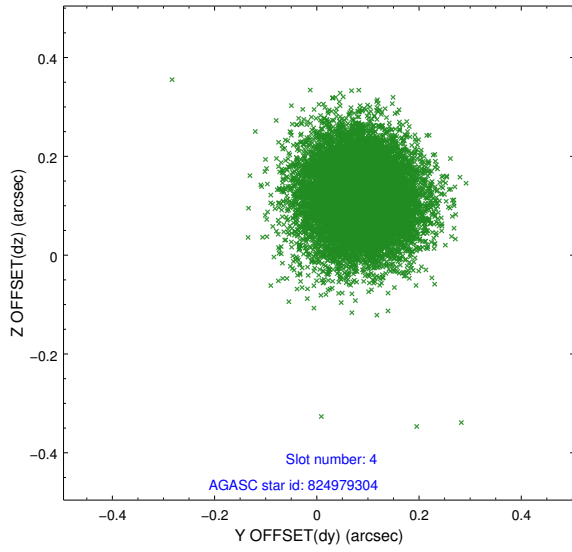
slot	status	id	mag	n_pts	med_dy	med_dz	dr1	dr2	ra	dec	mean_y	mean_z
0	FID	HRC-S-1	6.99	6177	0.150	-0.116	0.018	0.061	0.000000	0.000000	-1157.61	-455.79
1	FID	HRC-S-2	6.99	6177	0.090	-0.092	0.008	0.014	0.000000	0.000000	1241.83	-448.47
2	FID	HRC-S-3	7.01	6175	0.151	-0.095	0.019	0.067	0.000000	0.000000	-1160.13	573.71
3	GUIDE	824976424	7.57	12352	-0.195	-0.197	0.072	0.118	284.900091	-21.828249	820.46	1286.78
4	GUIDE	824979304	8.98	12347	0.085	0.119	0.091	0.147	285.497931	-22.093264	-328.92	-602.94
5	GUIDE	824979864	9.38	12350	-0.181	-0.300	0.133	0.226	284.670947	-21.972498	378.45	2099.11
6	GUIDE	824977840	9.18	12343	0.062	0.153	0.092	0.149	285.448876	-22.329632	-1158.74	-353.22
7	GUIDE	824977064	9.80	12336	0.212	0.222	0.158	0.305	285.607583	-22.499923	-1822.68	-815.85

2.4 Star Slots

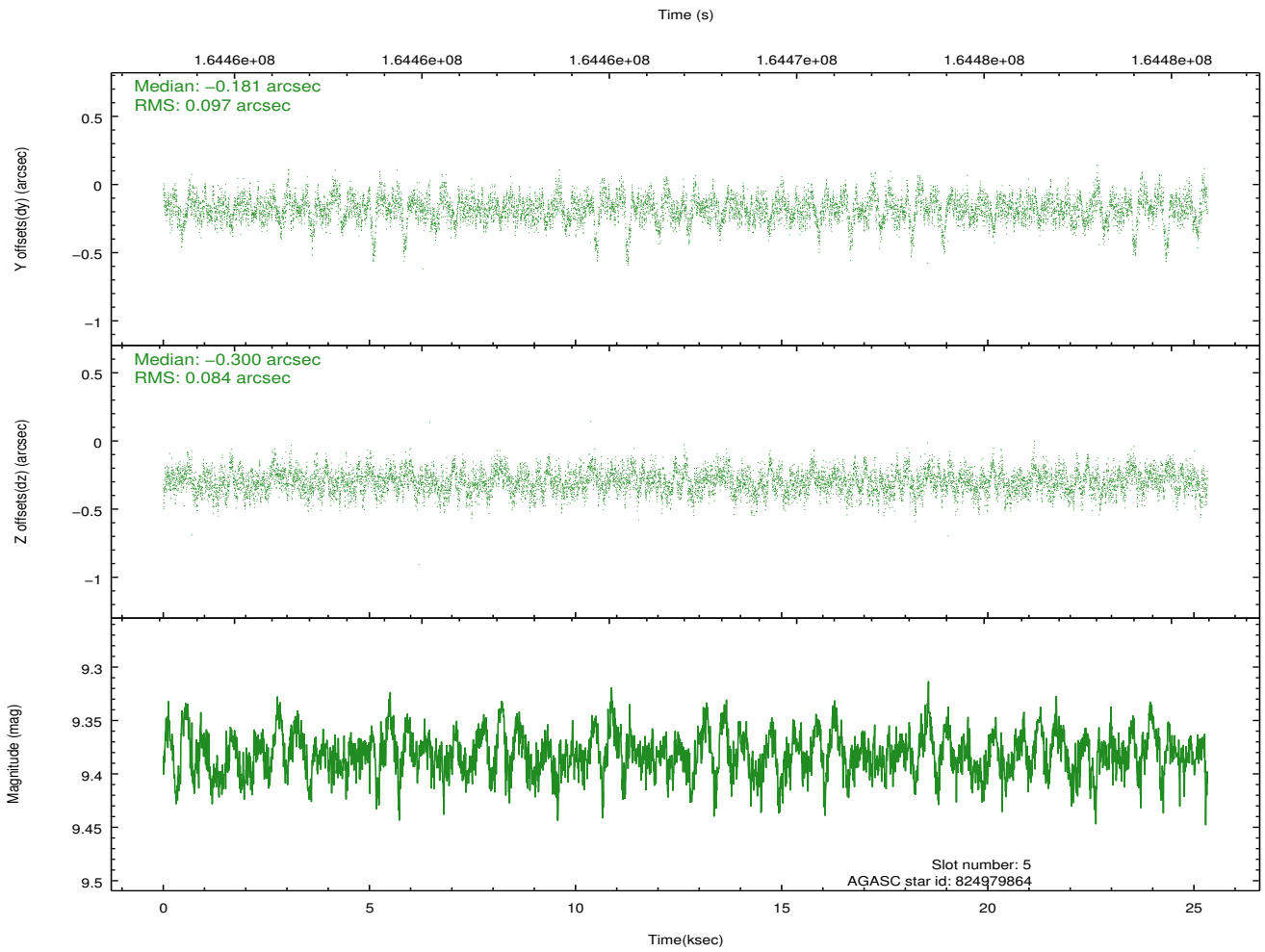
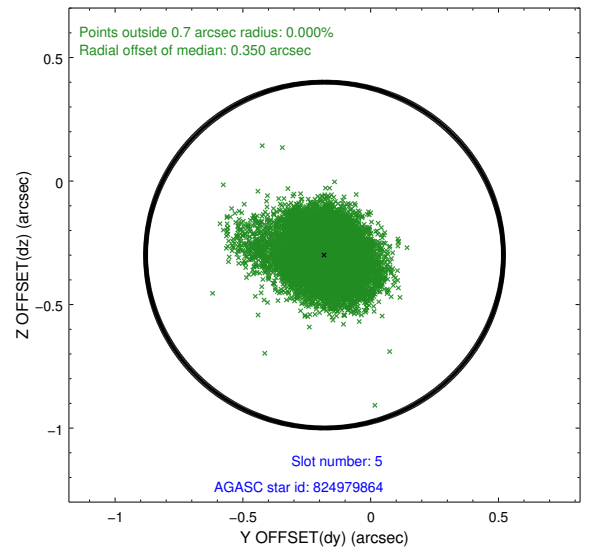
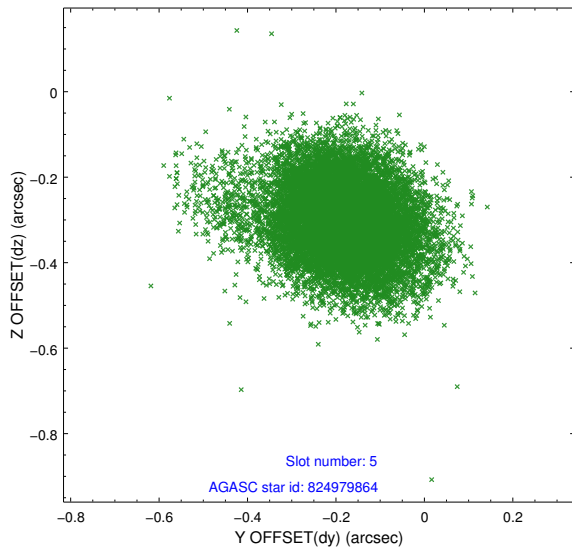
2.4.1 Slot 3



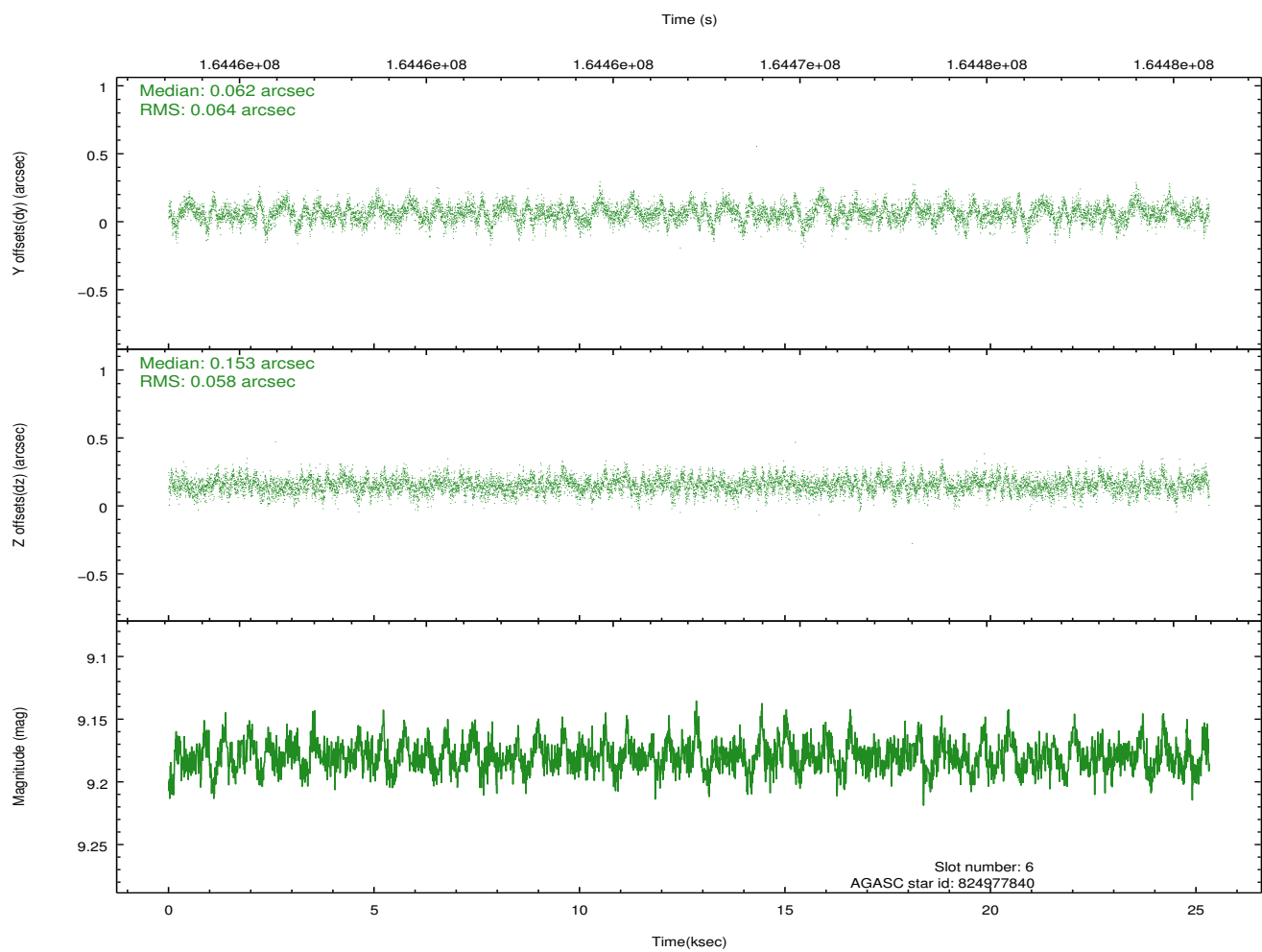
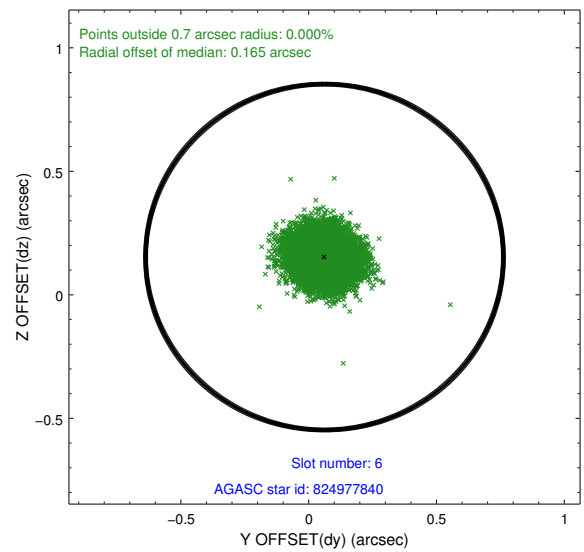
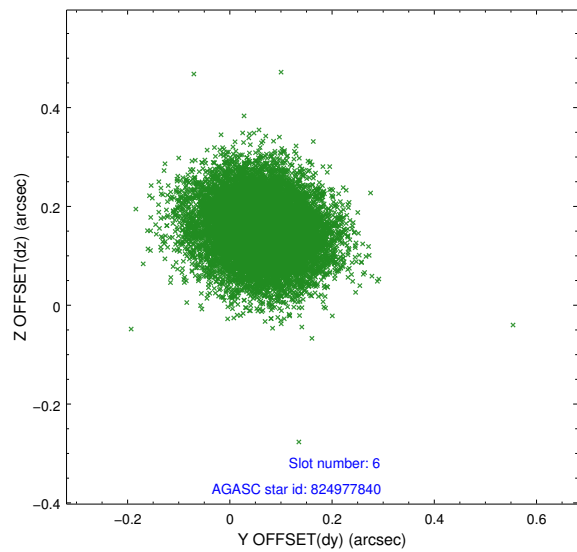
2.4.2 Slot 4



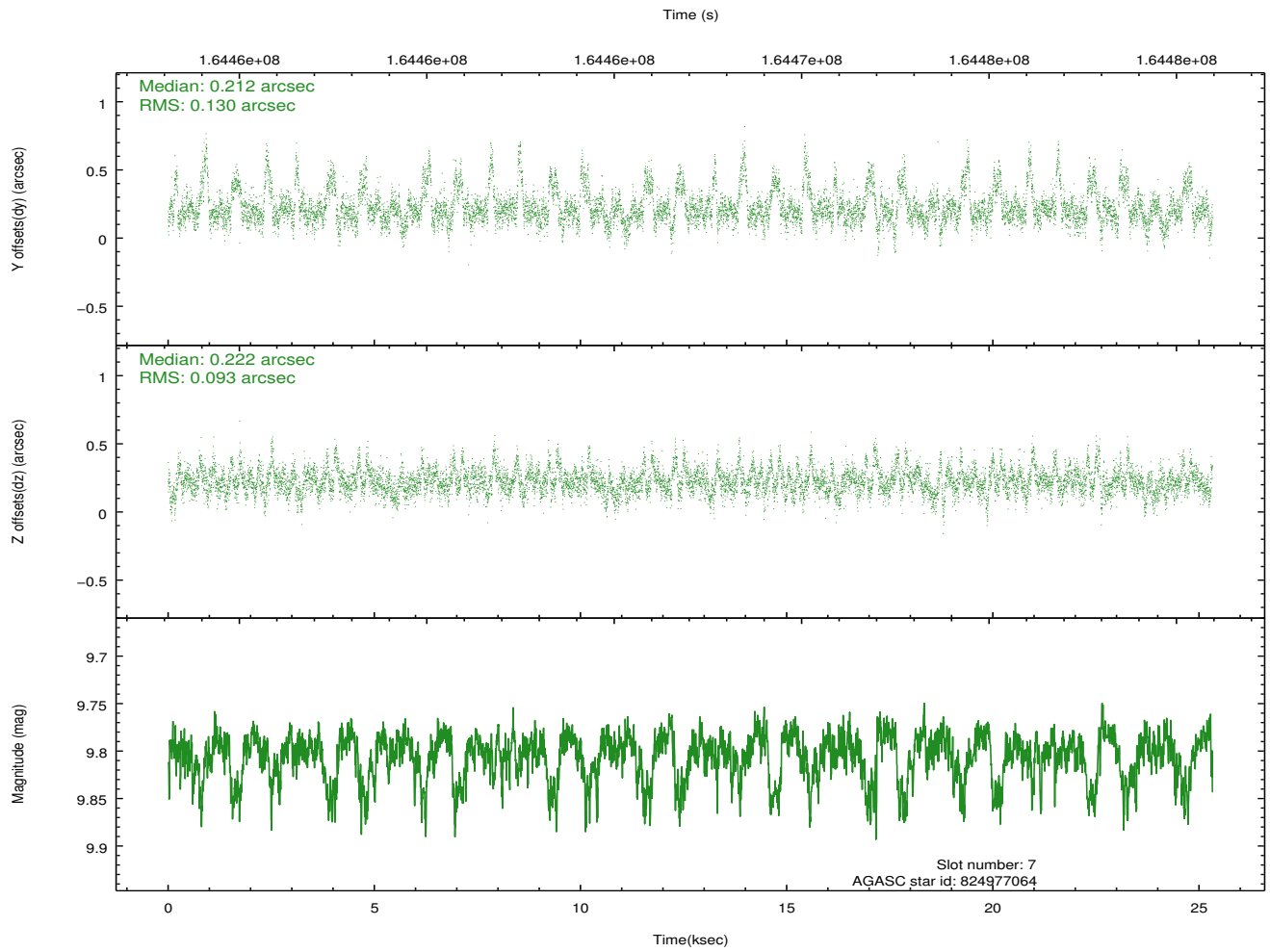
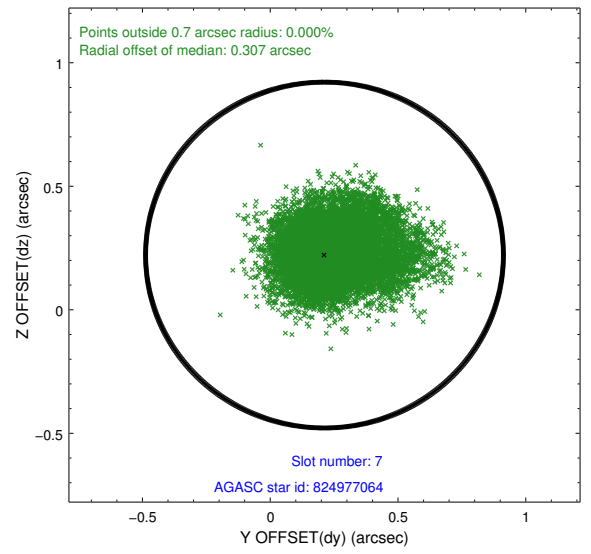
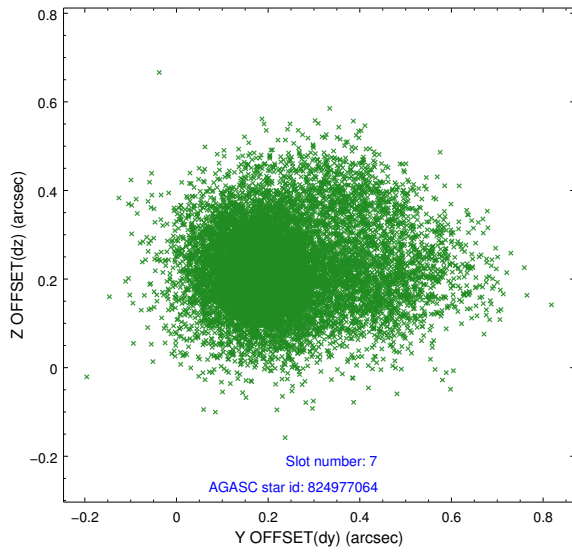
2.4.3 Slot 5



2.4.4 Slot 6

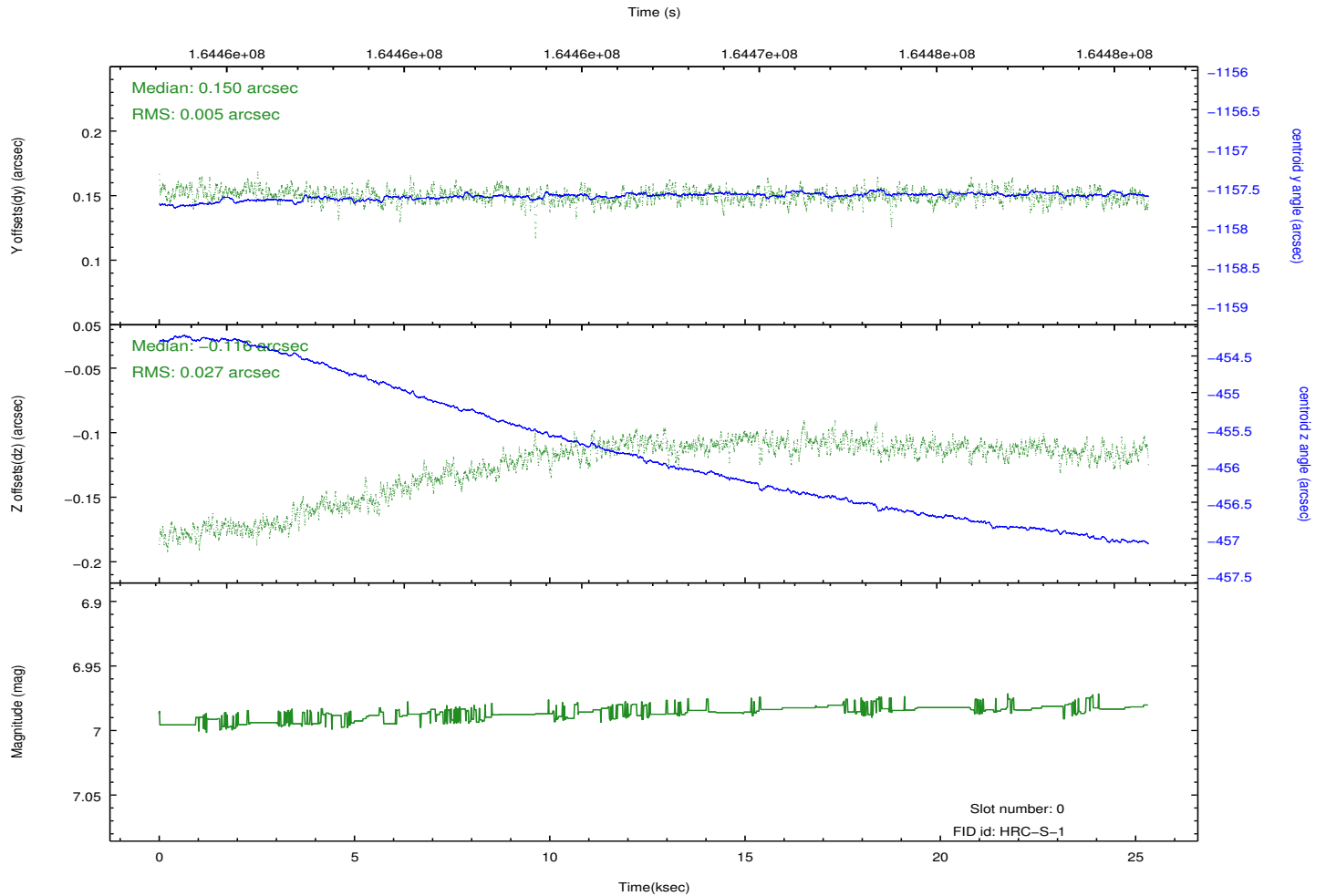
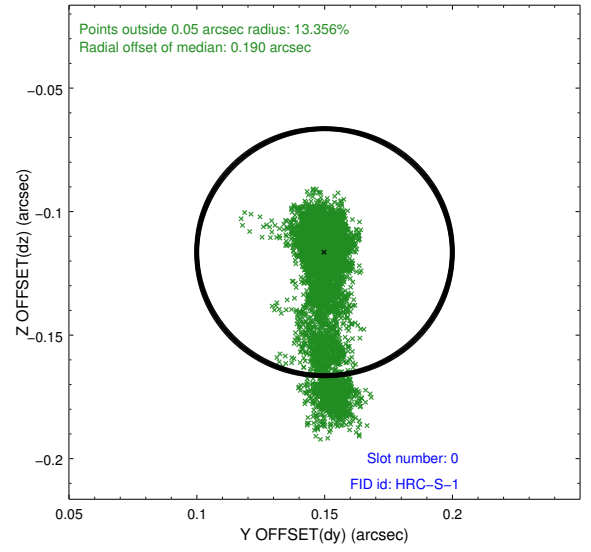
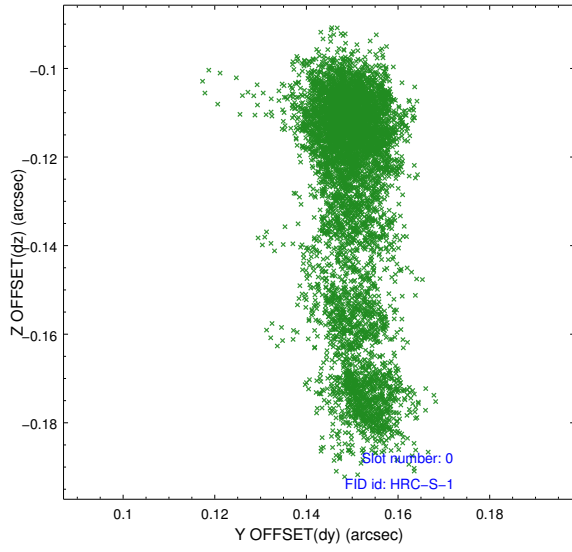


2.4.5 Slot 7

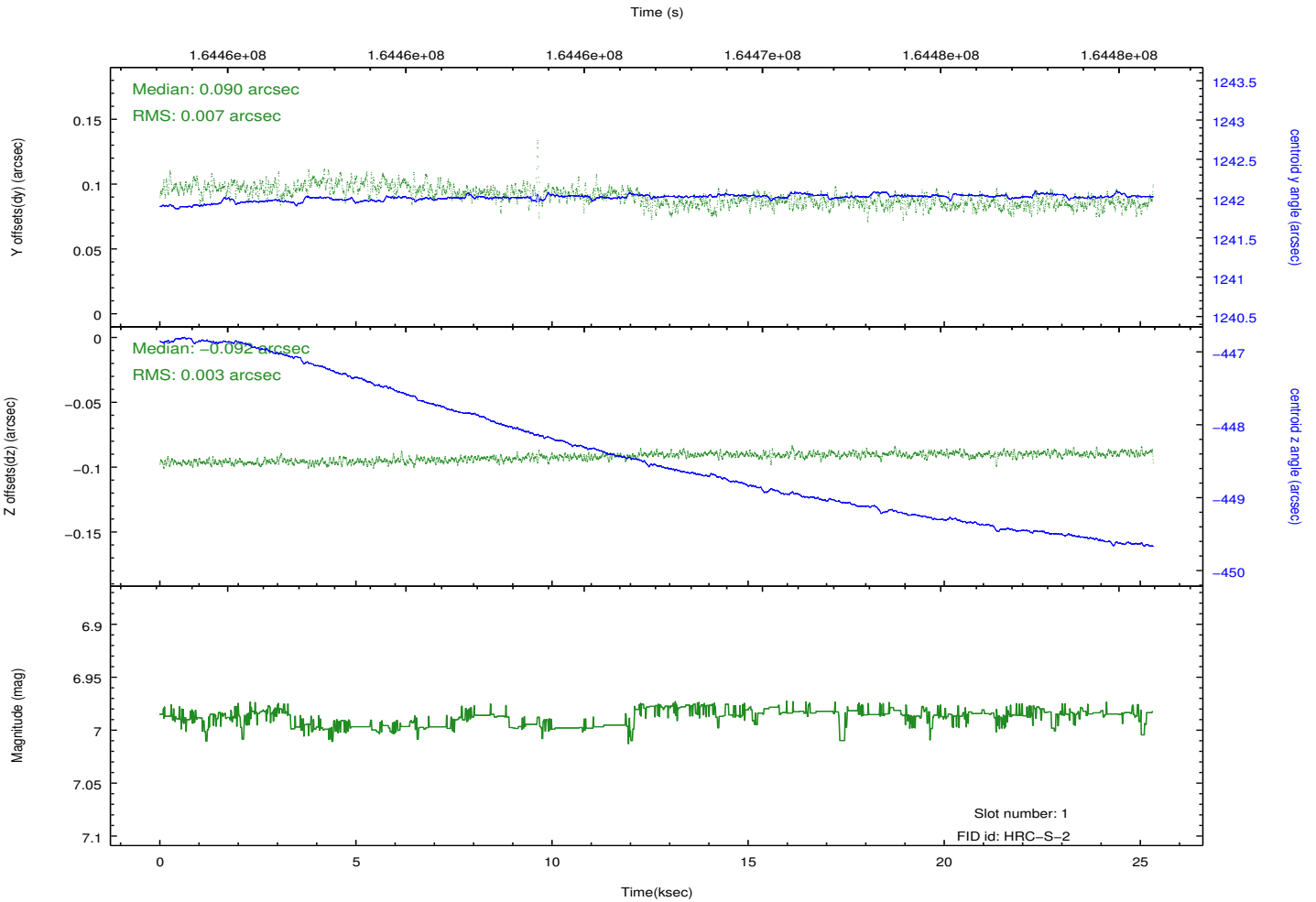
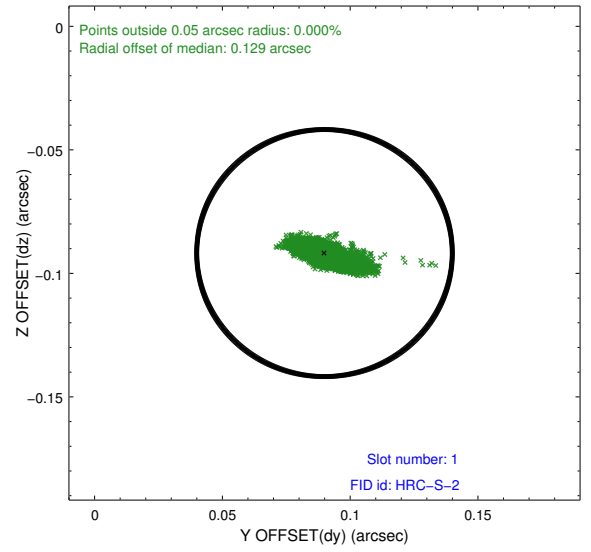
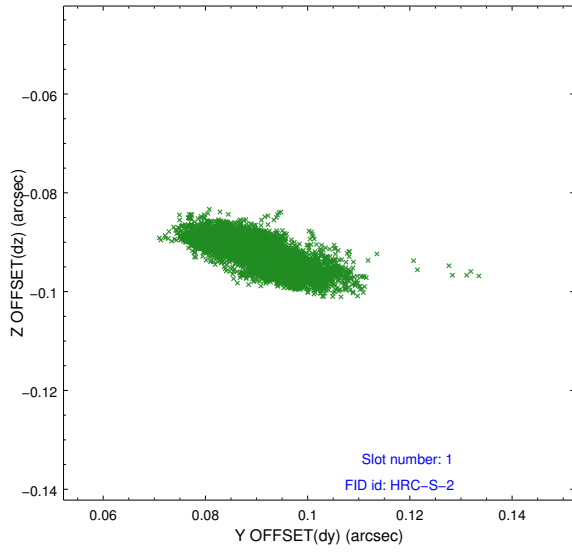


2.5 FID Slots

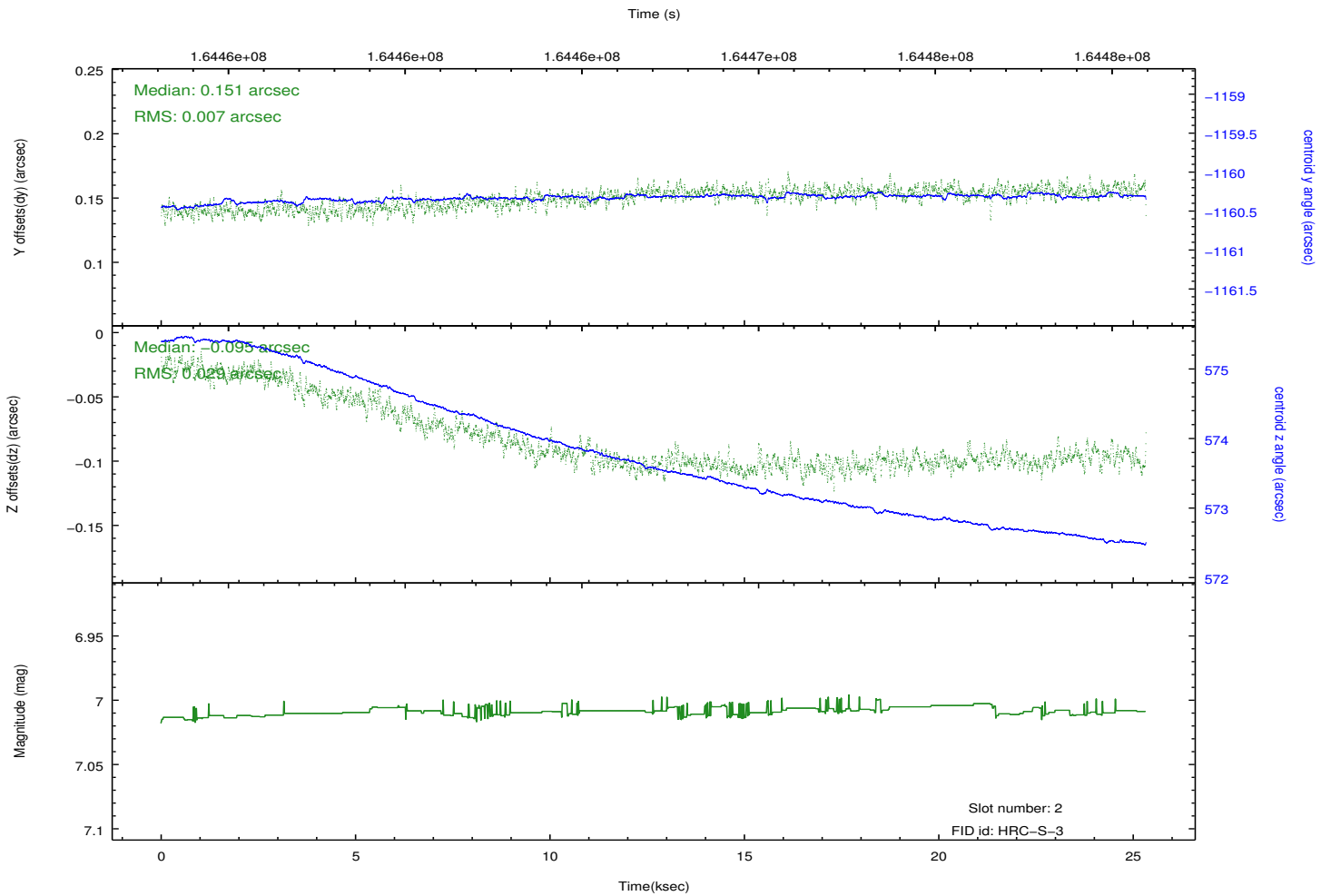
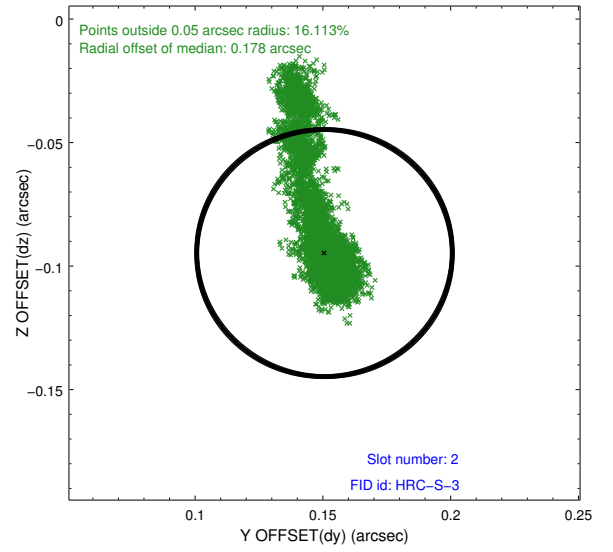
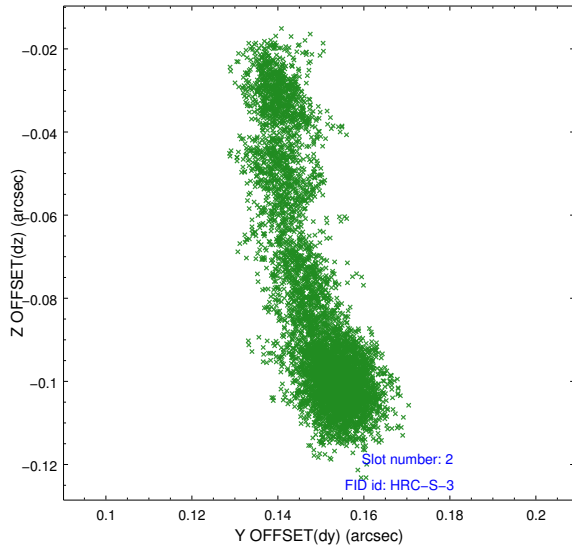
2.5.1 Slot 0



2.5.2 Slot 1

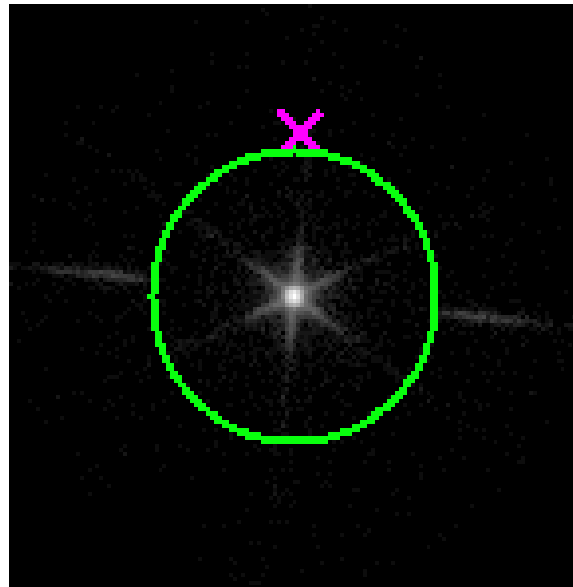


2.5.3 Slot 2

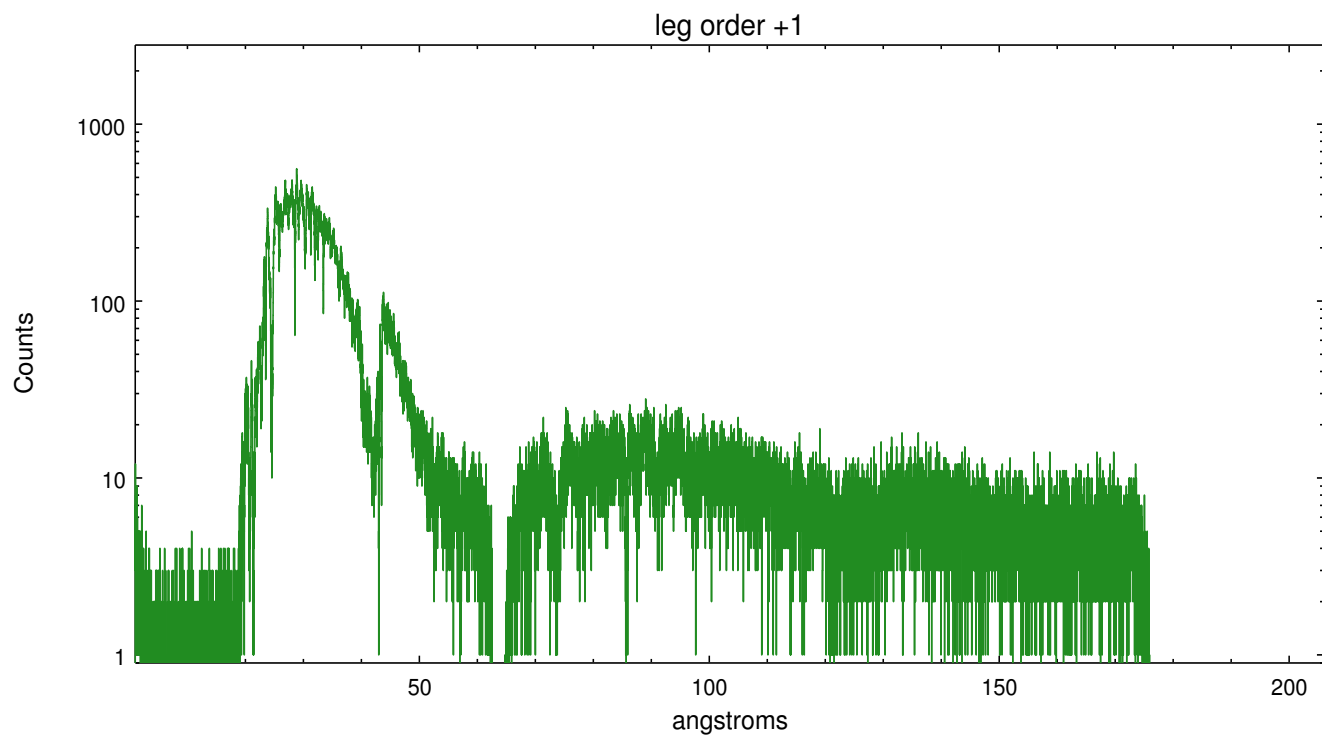
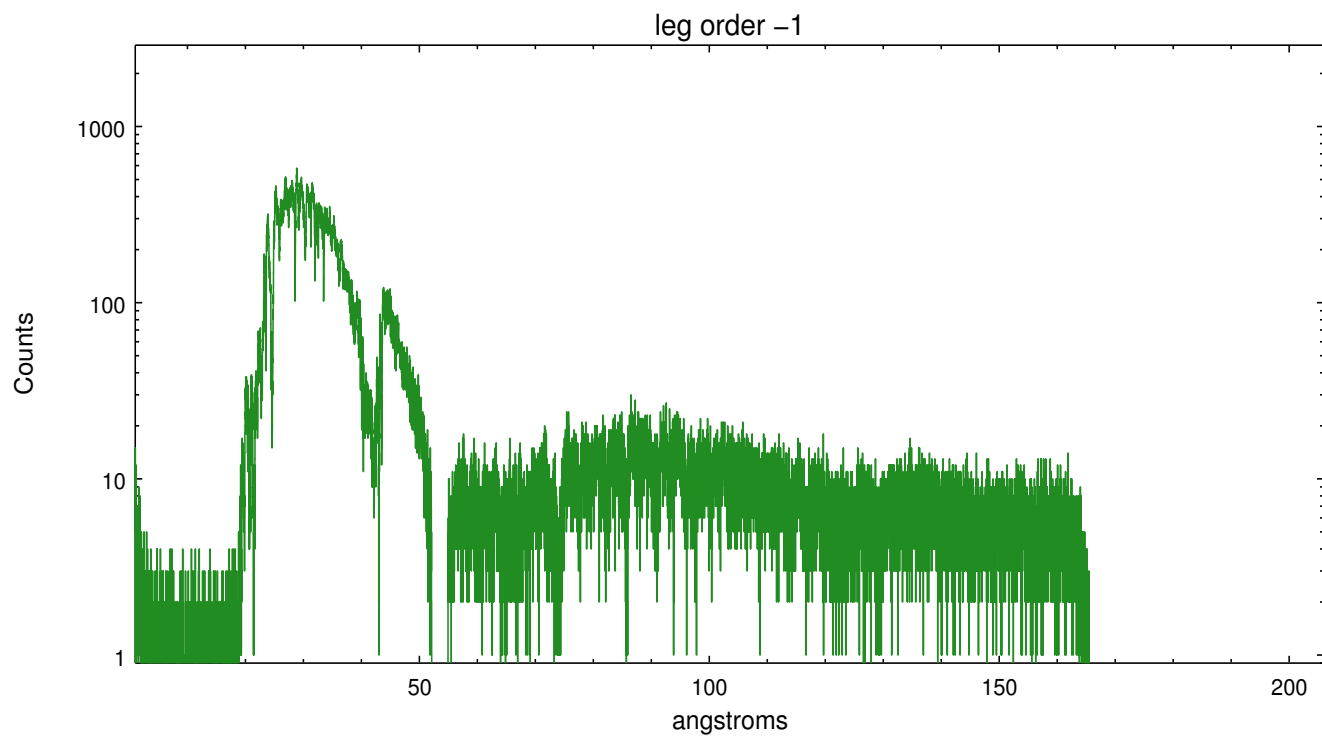


3 Gratings

3.1 LETG Arm



LETG Zero Order



A Summary

A.1 Status

V&V Scientist	Joy Nichols
V&V Date (YYYY-MM-DD)	2012.12.13
V&V Edition	1
V&V Disposition and Status	OK
V&V Charge Time	25.07

A.2 Comments