

V&V Reference Report

L2 ASCDS Version : 8.4.5

Observation 3845 - L2 Version 3
Chandra X-Ray Center

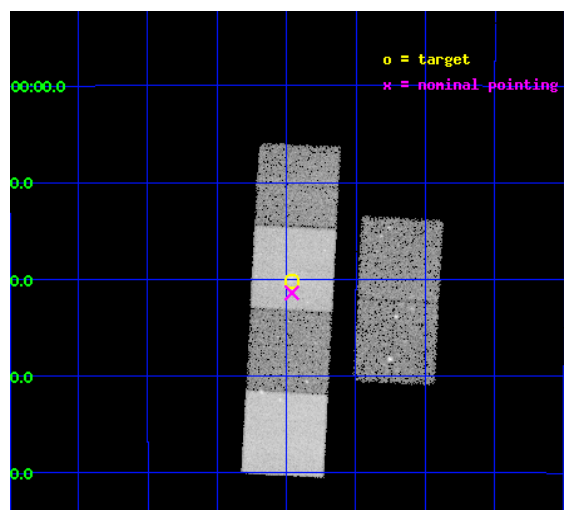
L2 Processing Date : Nov 5 2012

Contents

1	Front	2
2	OBI	3
2.1	OBI	3
2.1.1	Images	3
2.1.2	Bias	3
2.1.3	Parameters	4
2.1.4	Events	4
2.2	Compared Parameters	5
2.3	Aspect	6
2.4	Star Slots	9
2.4.1	Slot 3	9
2.4.2	Slot 4	10
2.4.3	Slot 5	11
2.4.4	Slot 6	12
2.4.5	Slot 7	13
2.5	FID Slots	14
2.5.1	Slot 0	14
2.5.2	Slot 1	15
2.5.3	Slot 2	16
A	Summary	17
A.1	Status	17
A.2	Comments	17

1 Front

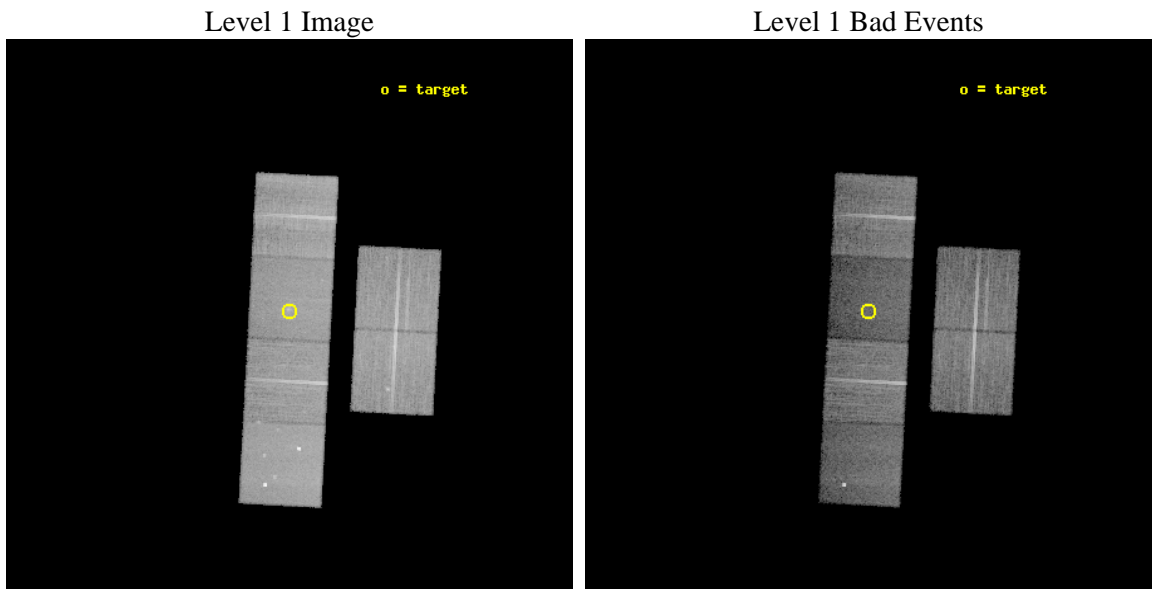
seq_num	500324	Sequence number
obs_id	3845	Observation id
title	SUPERNOVA REMNANTS: HOMES FOR YOUNG NEUTRON STARS	Proposal title
observer	Prof. David Helfand	Principal investigator
object	G16.7+0.1	Source name
dtcycle	0	
cycle	P	events from which exps? Prim/Second/Both
ra_targ	275.240833	Observer's specified target RA [deg]
dec_targ	-14.336	Observer's specified target Dec [deg]
ra_nom	275.24016278767	Nominal RA [deg]
dec_nom	-14.356767533289	Nominal Dec [deg]
roll_nom	273.01800264555	Nominal Roll [deg]
revision	3	Processing version of data
ontime	25148.799906313	Sum of GTIs [s]
livetime	24830.35065911	Livetime [s]
ontime2	25142.31797576	Sum of GTIs [s]
ontime3	25148.799906313	Sum of GTIs [s]
ontime5	25148.799906313	Sum of GTIs [s]
ontime6	25148.799906313	Sum of GTIs [s]
ontime7	25148.799906313	Sum of GTIs [s]
ontime8	25148.799906313	Sum of GTIs [s]
l2events	191340	Number of level 2 events



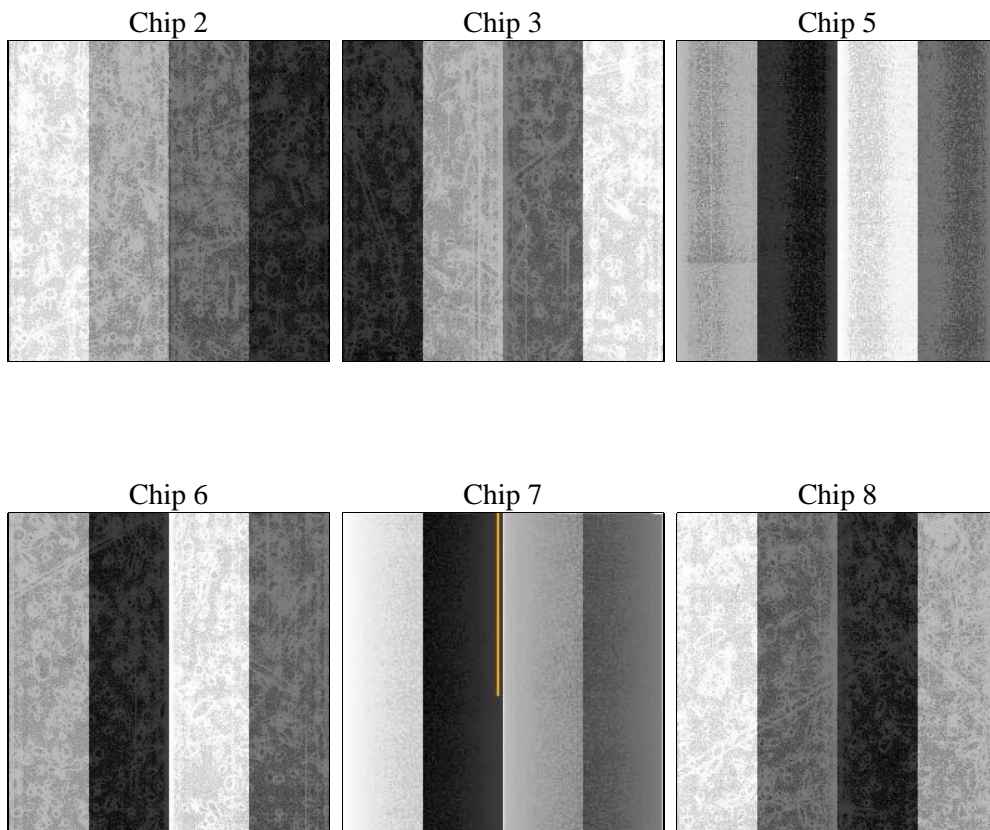
2 OBI

2.1 OBI

2.1.1 Images



2.1.2 Bias



2.1.3 Parameters

obi_num	0	Obi number	sched_exp_time	25000.000000	[s] Scheduled observation exposure time
ascdsver	8.4.5	Processing system revision	ontime	25148.799906313	Sum of GTIs [s]
caldbver	4.5.2	 	ontime2	25142.31797576	Sum of GTIs [s]
date	2012-11-05T02:50:30	Date and time of file creation	ontime3	25148.799906313	Sum of GTIs [s]
revision	3	Processing version of data	ontime5	25148.799906313	Sum of GTIs [s]
			ontime6	25148.799906313	Sum of GTIs [s]
			ontime7	25148.799906313	Sum of GTIs [s]
			ontime8	25148.799906313	Sum of GTIs [s]
			l1events	859203	Number of level 1 events

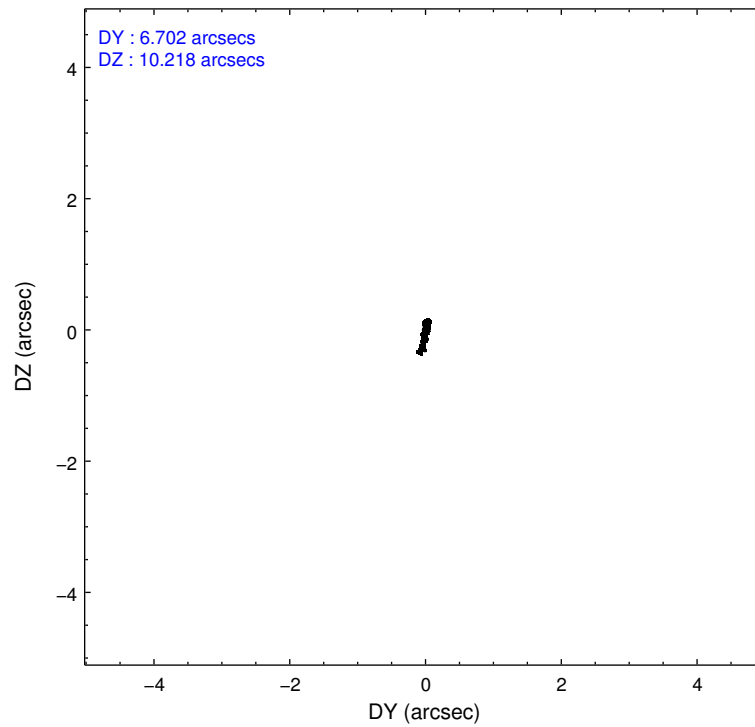
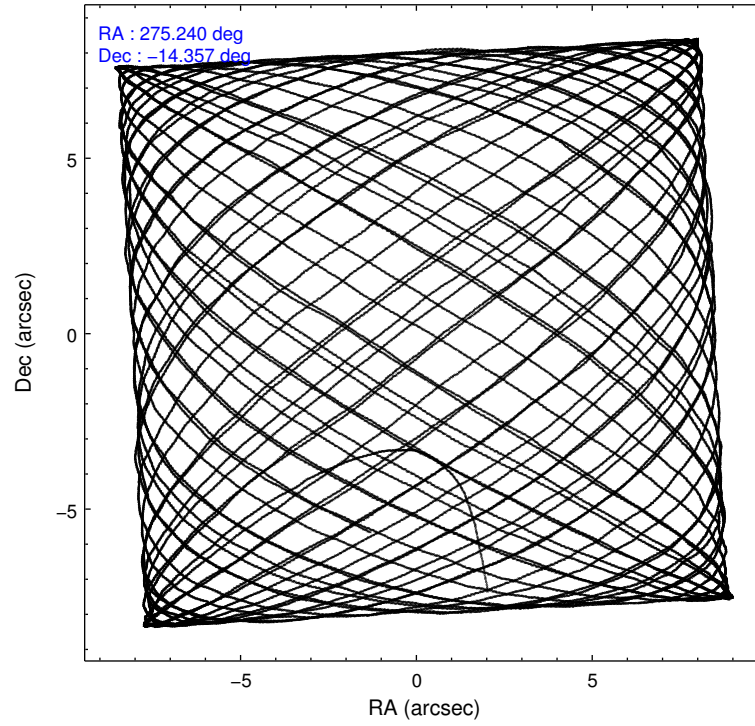
2.1.4 Events

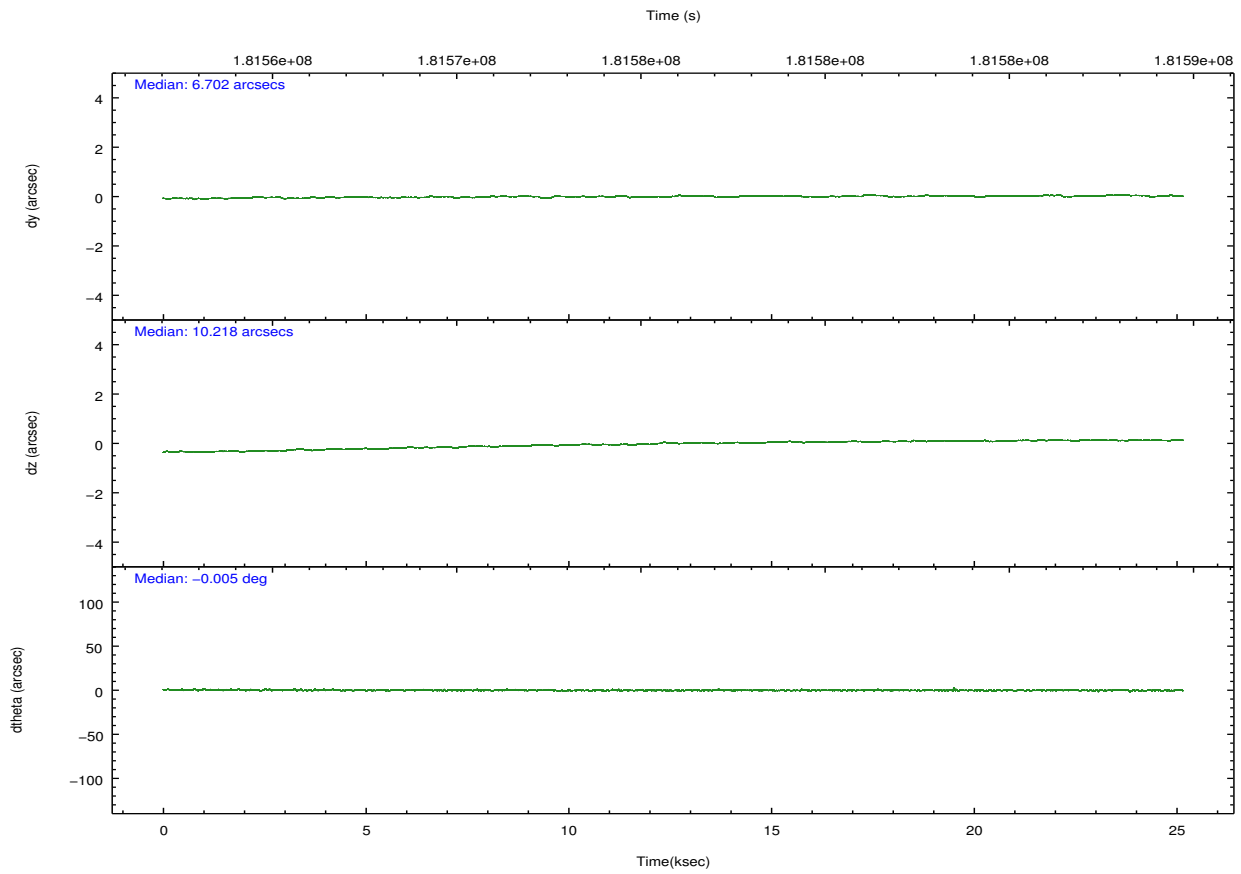
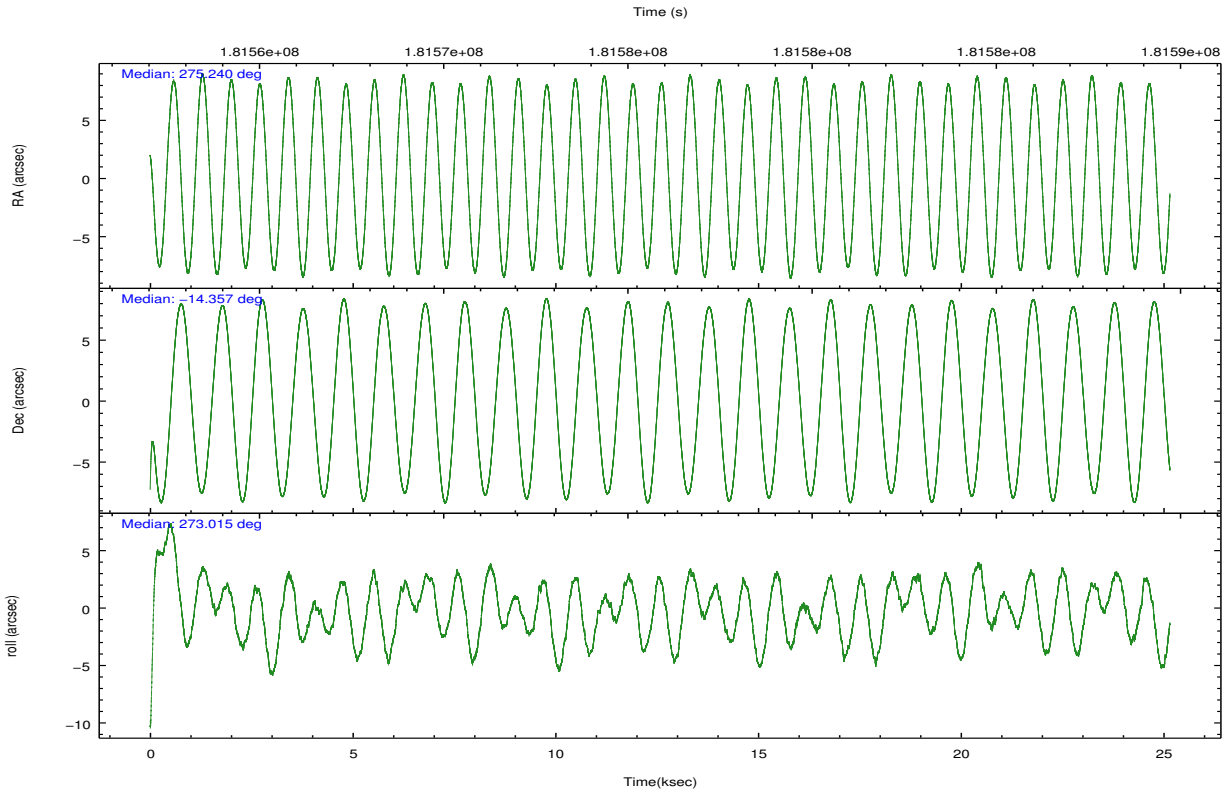
	ccd 2	ccd 3	ccd 5	ccd 6	ccd 7	ccd 8		ccd 2	ccd 3	ccd 5	ccd 6	ccd 7	ccd 8
level 1 events	142967	129159	165017	135882	126714	159464	grade 0 events	6943	5713	11190	6930	6894	10878
rejected events	127887	115908	78156	120111	63095	122595		4%	4%	6%	5%	5%	6%
rejected %	89%	89%	47%	88%	49%	76%	grade 1 events	84	67	149	58	100	106
								0%	0%	0%	0%	0%	0%
							grade 2 events	3158	2663	26716	3082	13798	8327
								2%	2%	16%	2%	10%	5%
							grade 3 events	1525	1413	4238	1630	6487	4139
								1%	1%	2%	1%	5%	2%
							grade 4 events	1479	1408	3948	1577	6505	3854
								1%	1%	2%	1%	5%	2%
							grade 5 events	3729	4314	15129	4384	13540	6521
								2%	3%	9%	3%	10%	4%
							grade 6 events	2204	2239	42026	2777	30912	10194
								1%	1%	25%	2%	24%	6%
							grade 7 events	123845	111342	61621	115444	48478	115445
								86%	86%	37%	84%	38%	72%

2.2 Compared Parameters

Parameter	Planned	Actual	Parameter	Planned	Actual
Instrument	ACIS	ACIS	Obspar format version number	7	7
Detector	ACIS-235678	ACIS-235678	Obspar file type	PREDICTED	ACTUAL
Grating	NONE	NONE	Obspar update status	NONE	UPDATED
Data mode	VFAINT	VFAINT	Number of optional ACIS chips dropped	0	0
Observation mode	POINTING	POINTING	On-chip summing requested	N	N
[deg] Pointing RA	275.224551	275.2401627876715	Subarray requested	NONE	NONE
[deg] Pointing Dec	-14.334117	-14.35676753328864	Alternating exposures requested	N	N
[deg] Pointing Roll	272.857514	273.0180026455521	[s] Primary exposure time	0.000000	3.2
[mm] SIM focus pos	-0.684267	-0.6828225247311905			
[mm] SIM defocus	0	0.001444936568705701			
[mm] SIM translation stage pos	-190.132523	-190.1425803651734			
[mm] SIM translation stage offset	0	0.01005778216563158			
[s] Observation start time (MET)	181563442.184000	181562208.70059			
Observation start date	2003-10-03T10:16:18	2003-10-03T09:56:48			
[s] Observation end time (MET)	181588442.184000	181589256.40175			
Observation end date	2003-10-03T17:12:58	2003-10-03T17:27:36			
Read mode	TIMED	TIMED			

2.3 Aspect



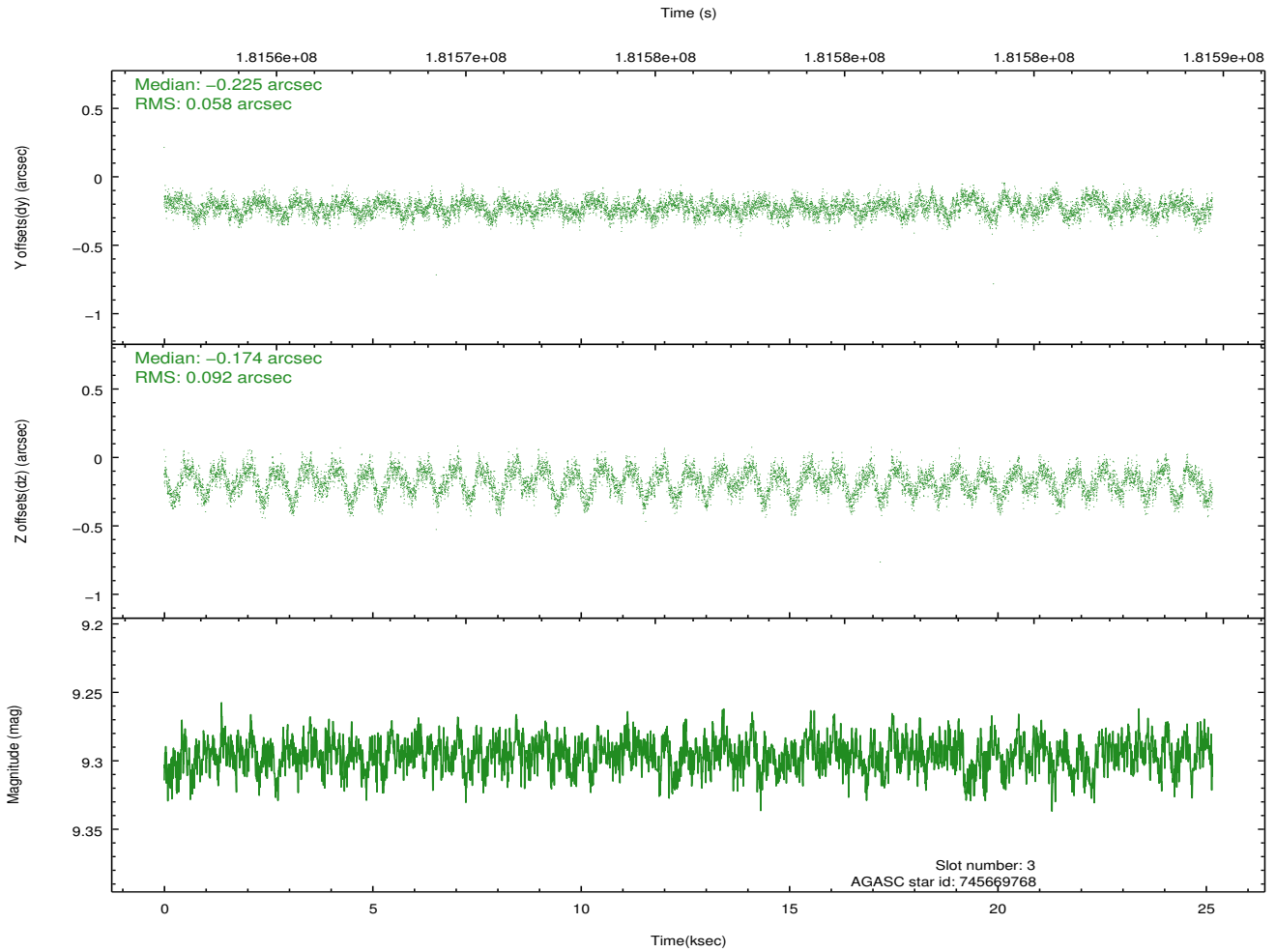
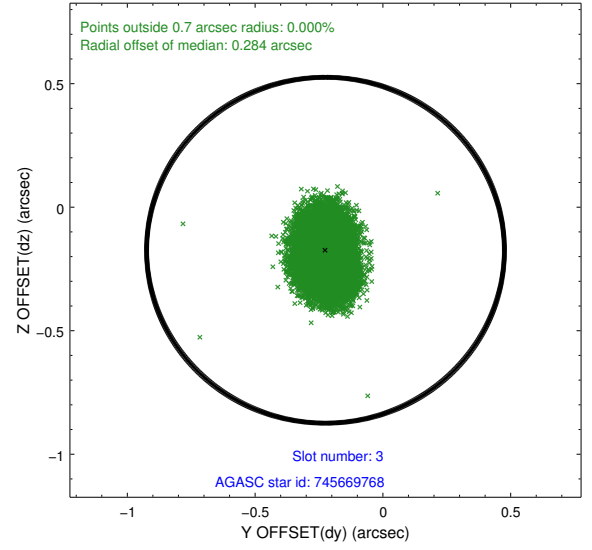
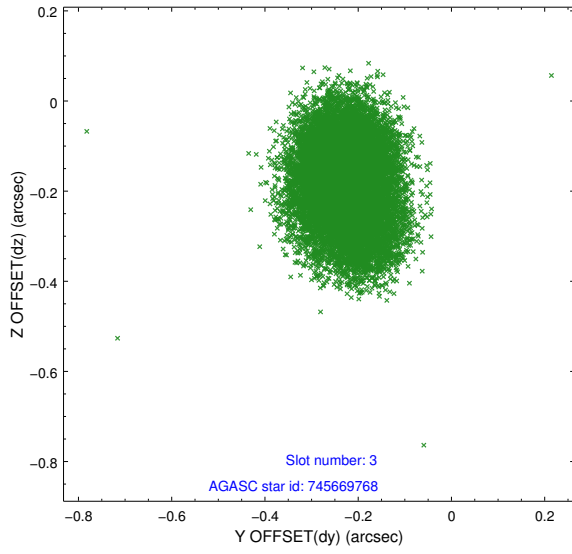


Slot Statistics

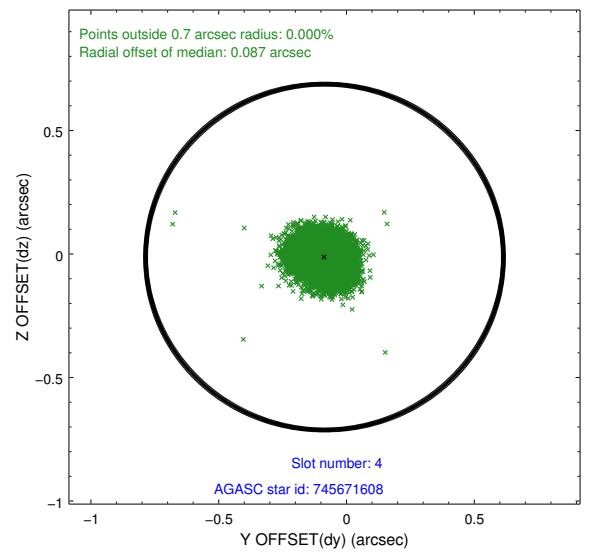
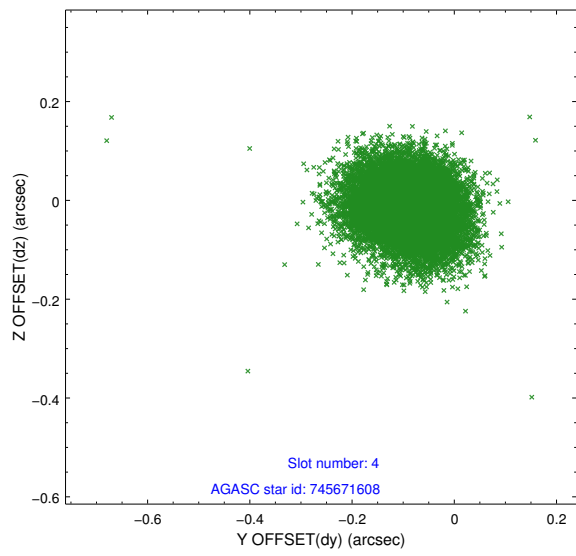
slot	status	id	mag	n_pts	med_dy	med_dz	dr1	dr2	ra	dec	mean_y	mean_z
0	FID	ACIS-S-2	7.10	6134	-0.062	-0.041	0.005	0.010	0.000000	0.000000	-759.48	-1731.42
1	FID	ACIS-S-4	7.20	6134	0.059	0.030	0.006	0.010	0.000000	0.000000	2153.84	177.05
2	FID	ACIS-S-6	7.34	6135	-0.025	0.018	0.007	0.012	0.000000	0.000000	402.66	814.54
3	GUIDE	745669768	9.30	12265	-0.225	-0.174	0.115	0.184	274.643761	-13.906113	-1637.45	-1950.44
4	GUIDE	745671608	9.18	12261	-0.086	-0.012	0.080	0.131	275.327786	-13.786724	-1950.07	458.70
5	GUIDE	745680912	8.75	12265	0.273	0.082	0.061	0.097	275.063718	-14.846878	1816.37	-650.57
6	GUIDE	747374008	9.11	12258	0.234	0.236	0.090	0.143	275.902160	-14.886209	2106.81	2255.89
7	GUIDE	745670520	8.87	12266	-0.190	-0.123	0.080	0.124	274.614741	-13.988466	-1345.88	-2065.48

2.4 Star Slots

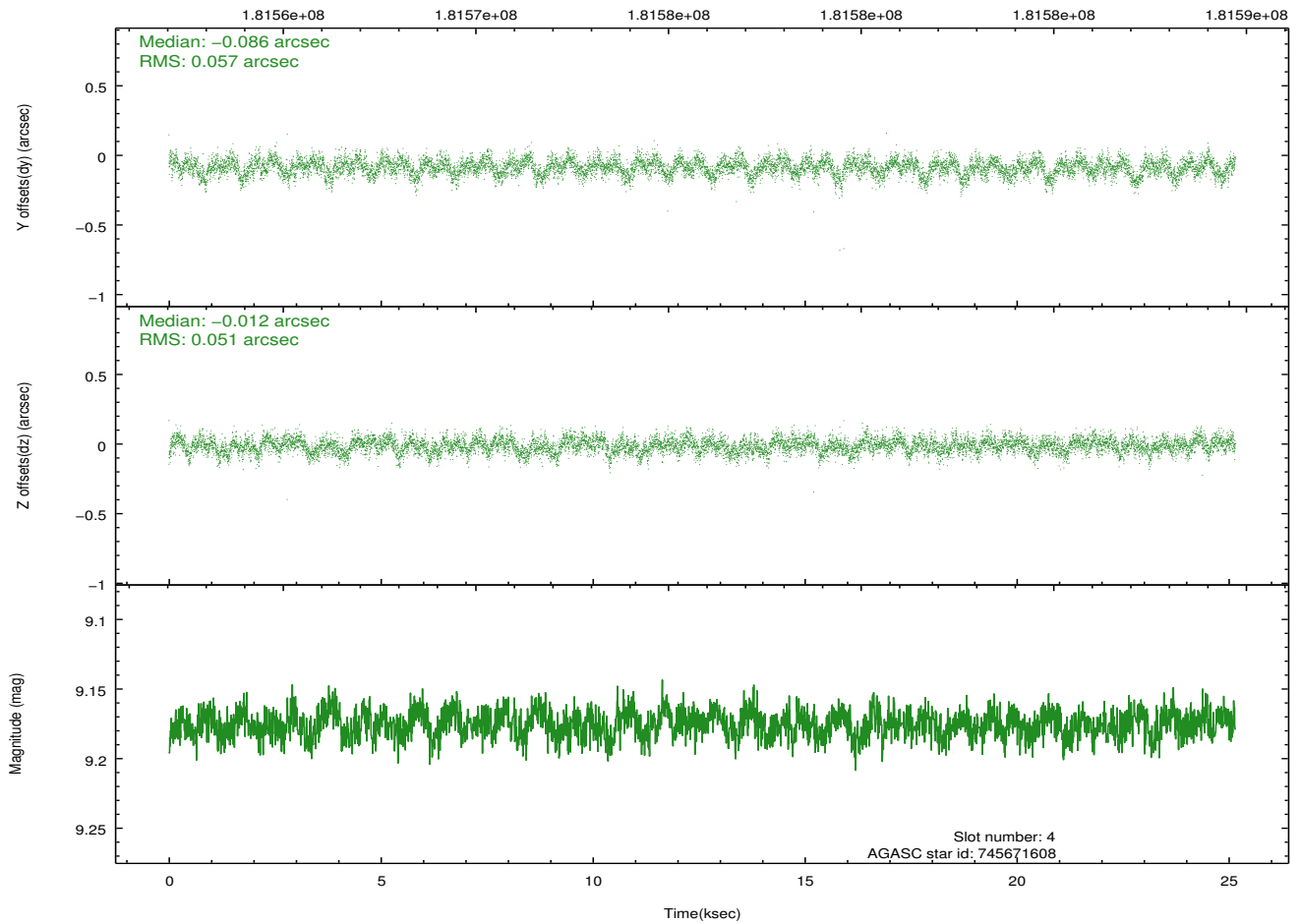
2.4.1 Slot 3



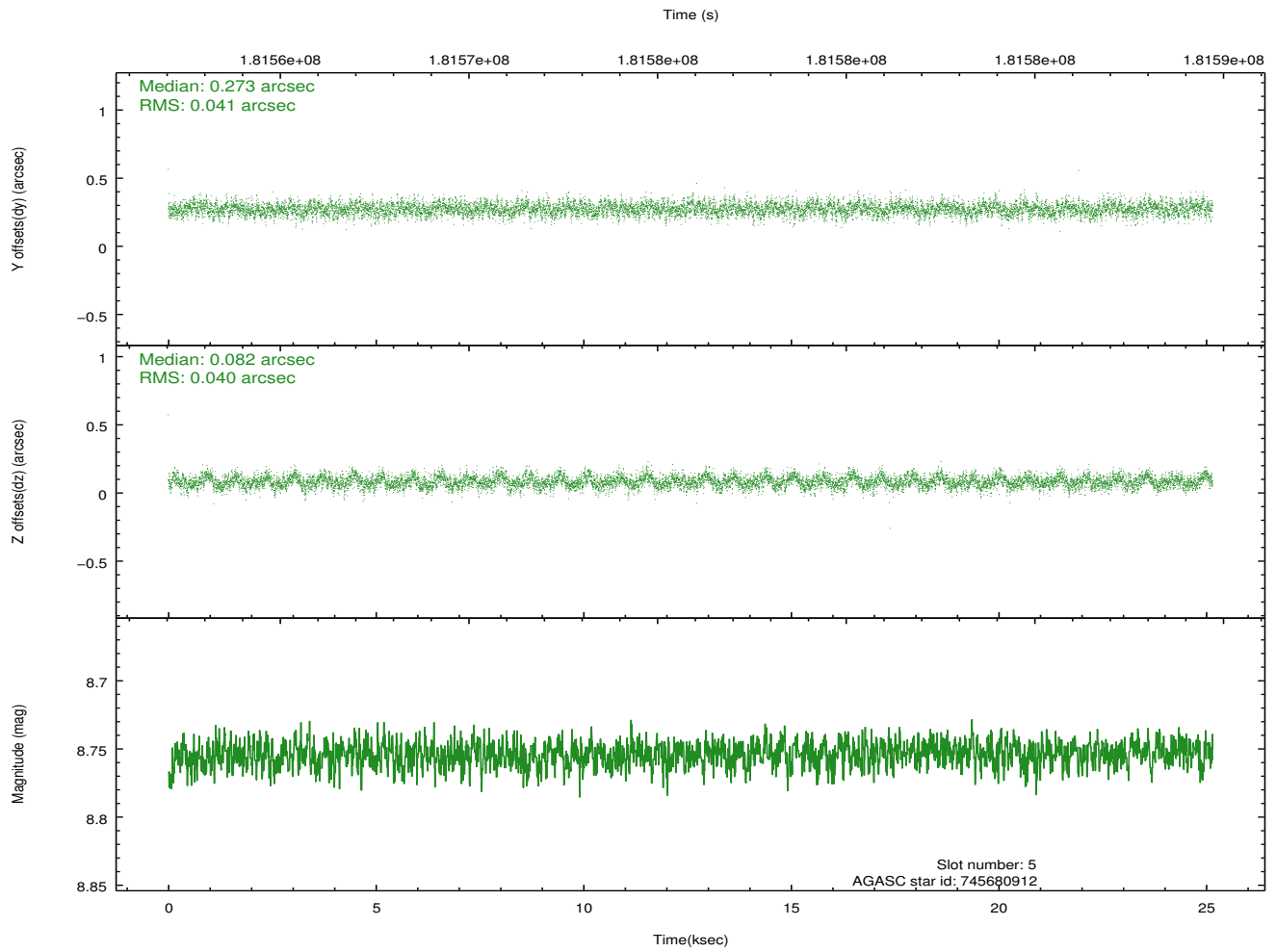
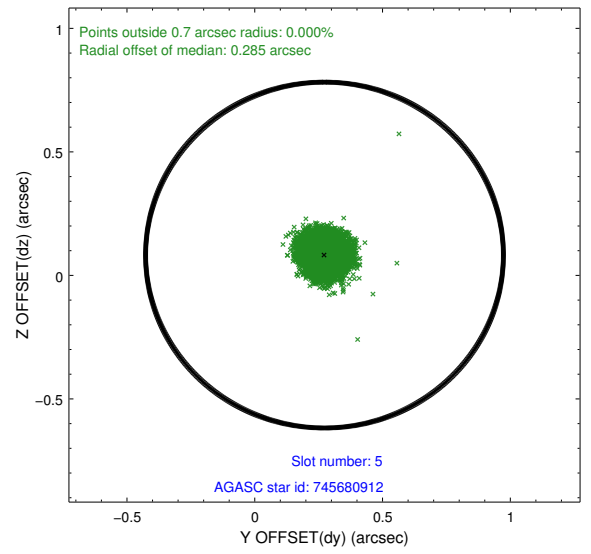
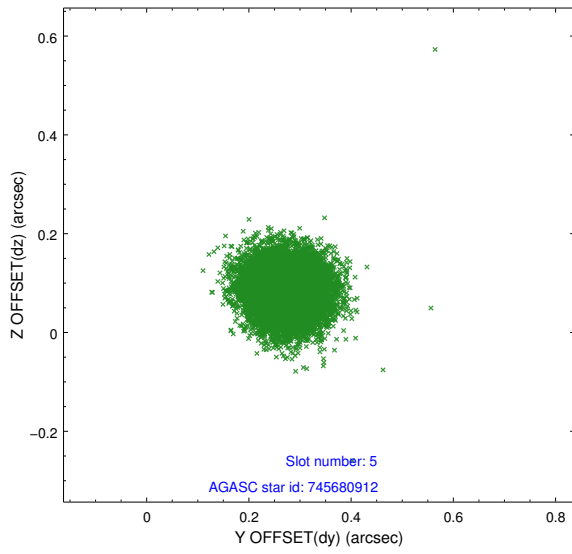
2.4.2 Slot 4



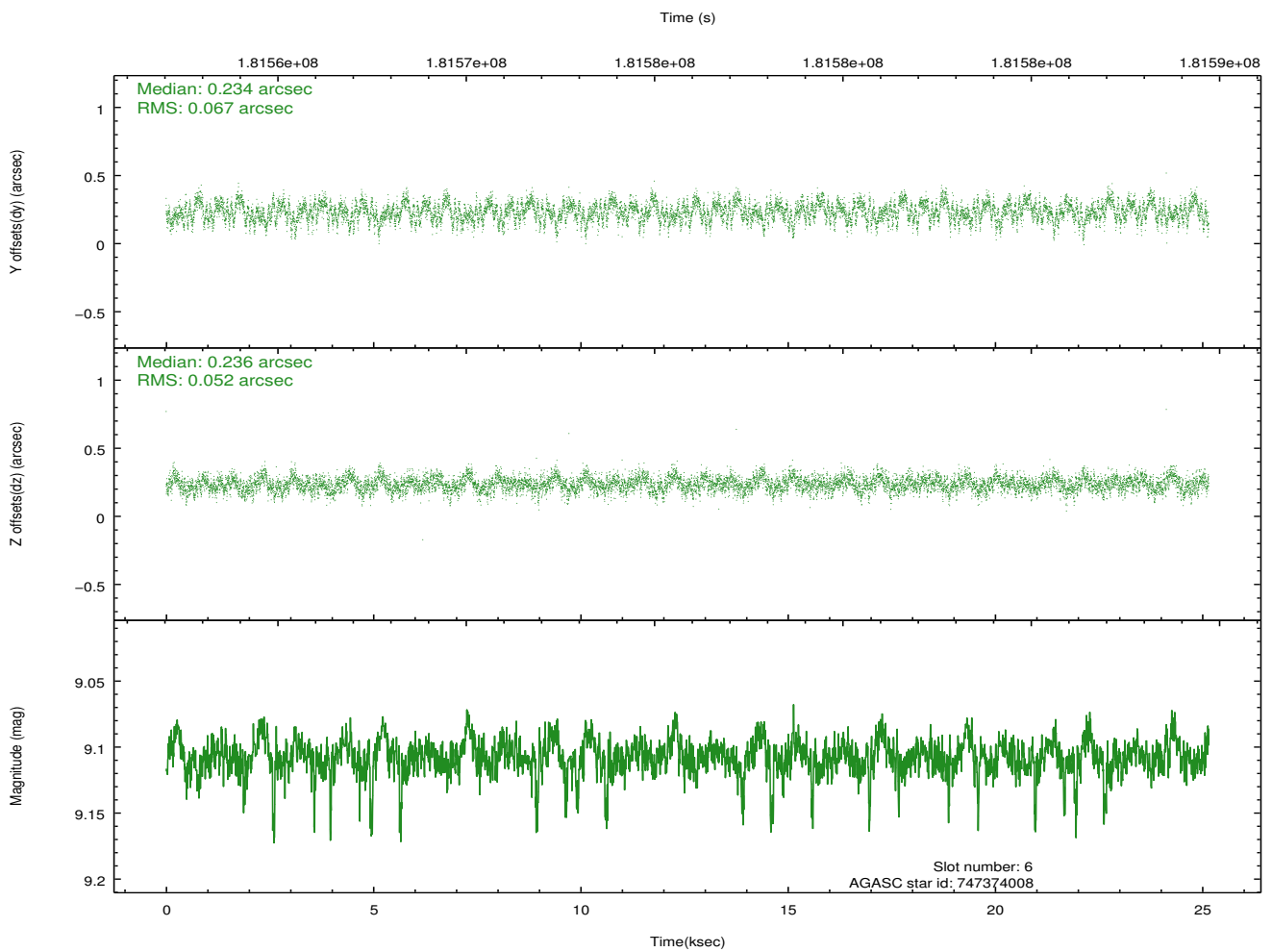
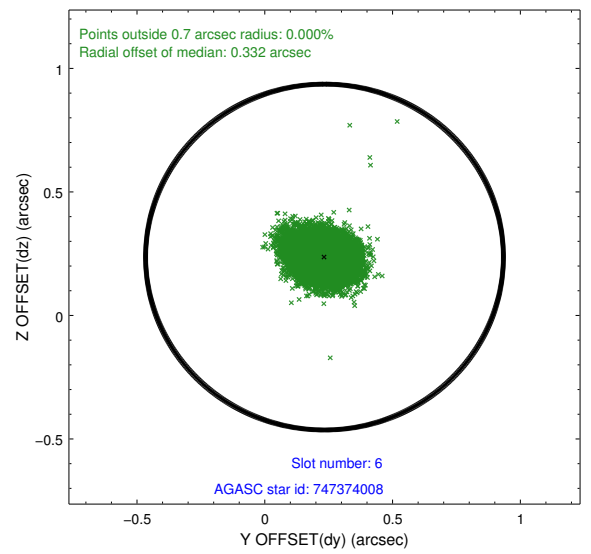
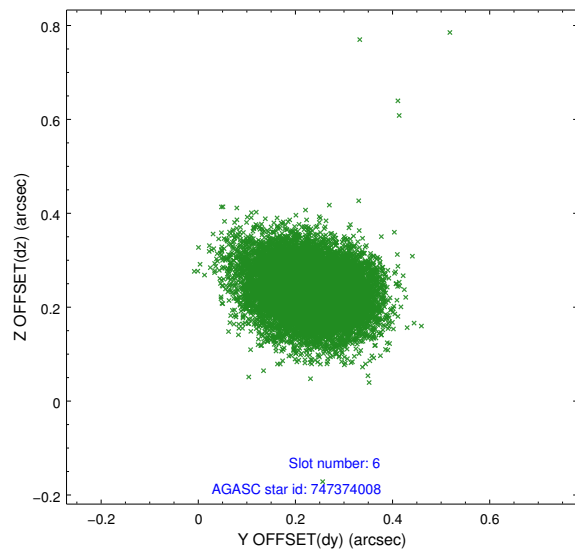
Time (s)



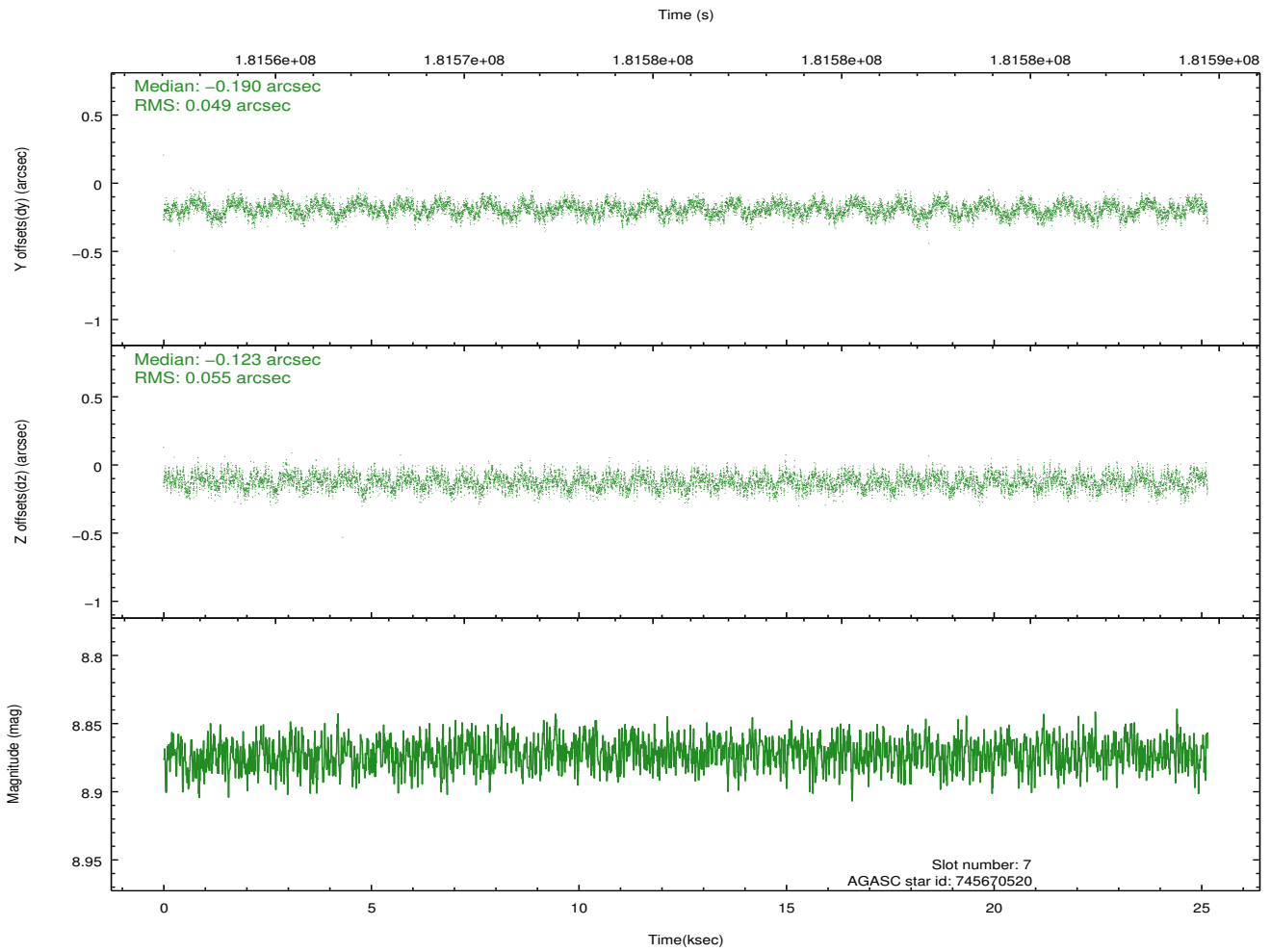
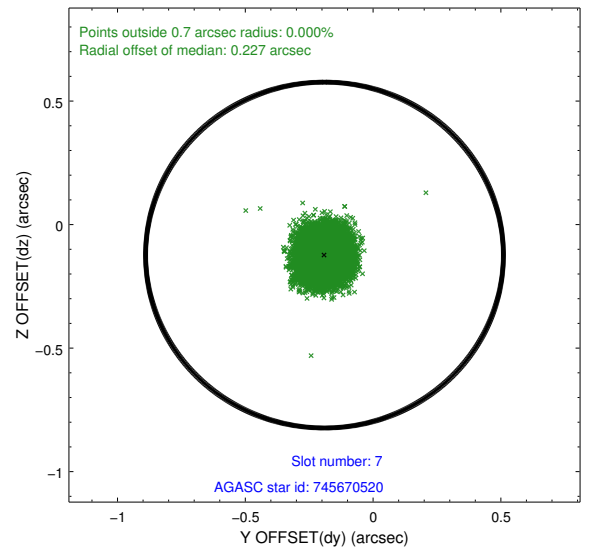
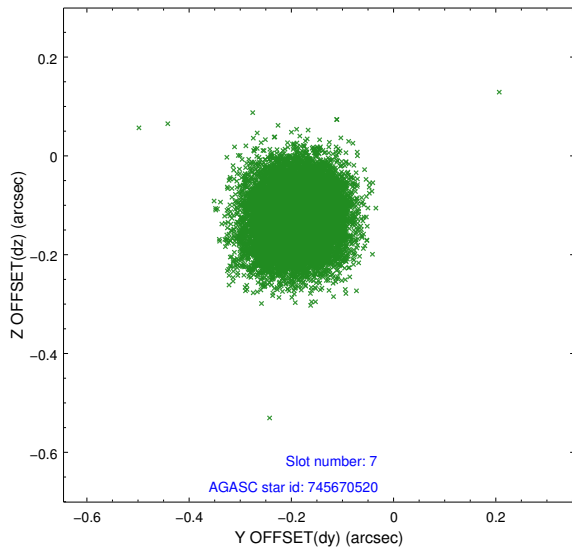
2.4.3 Slot 5



2.4.4 Slot 6

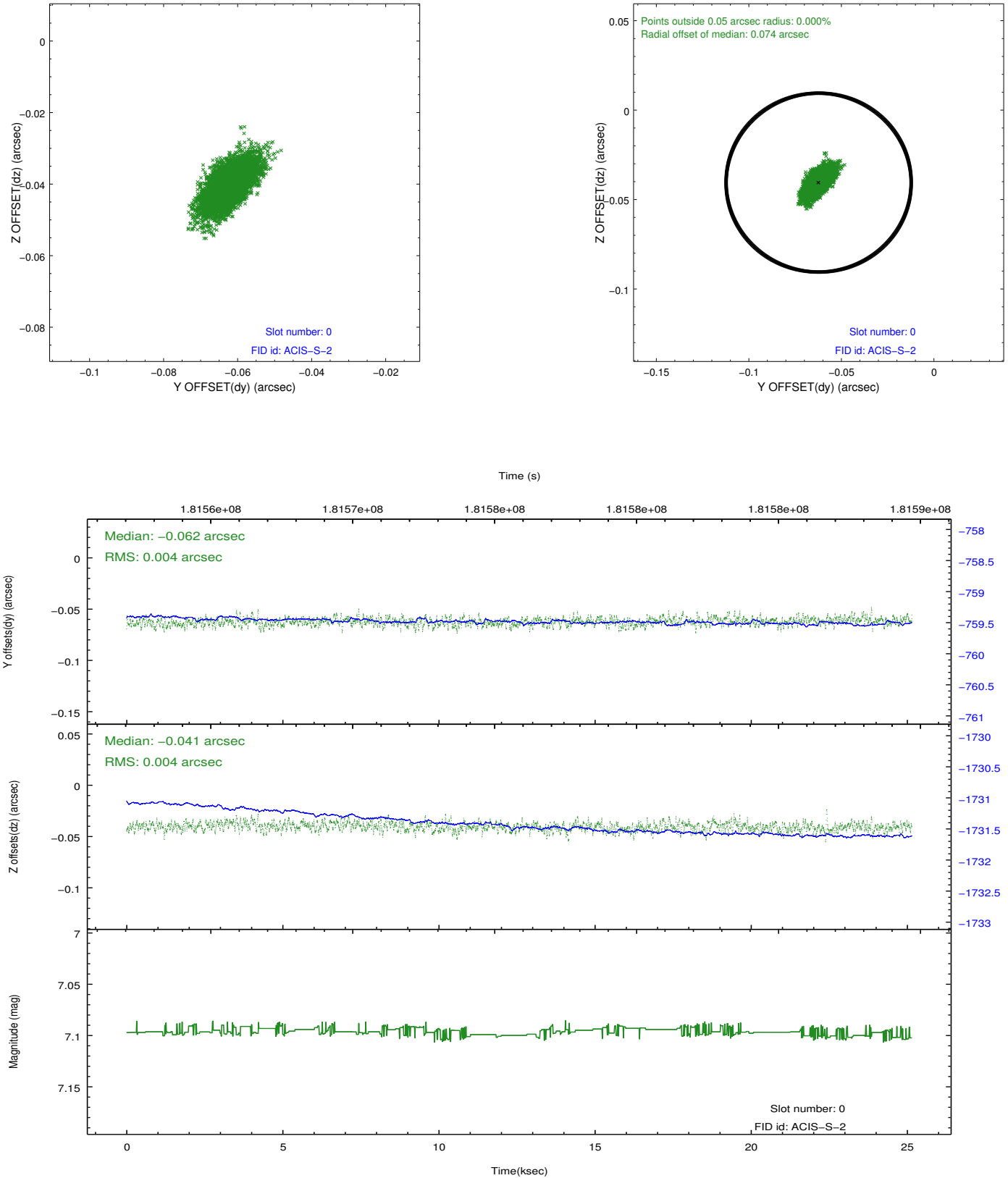


2.4.5 Slot 7

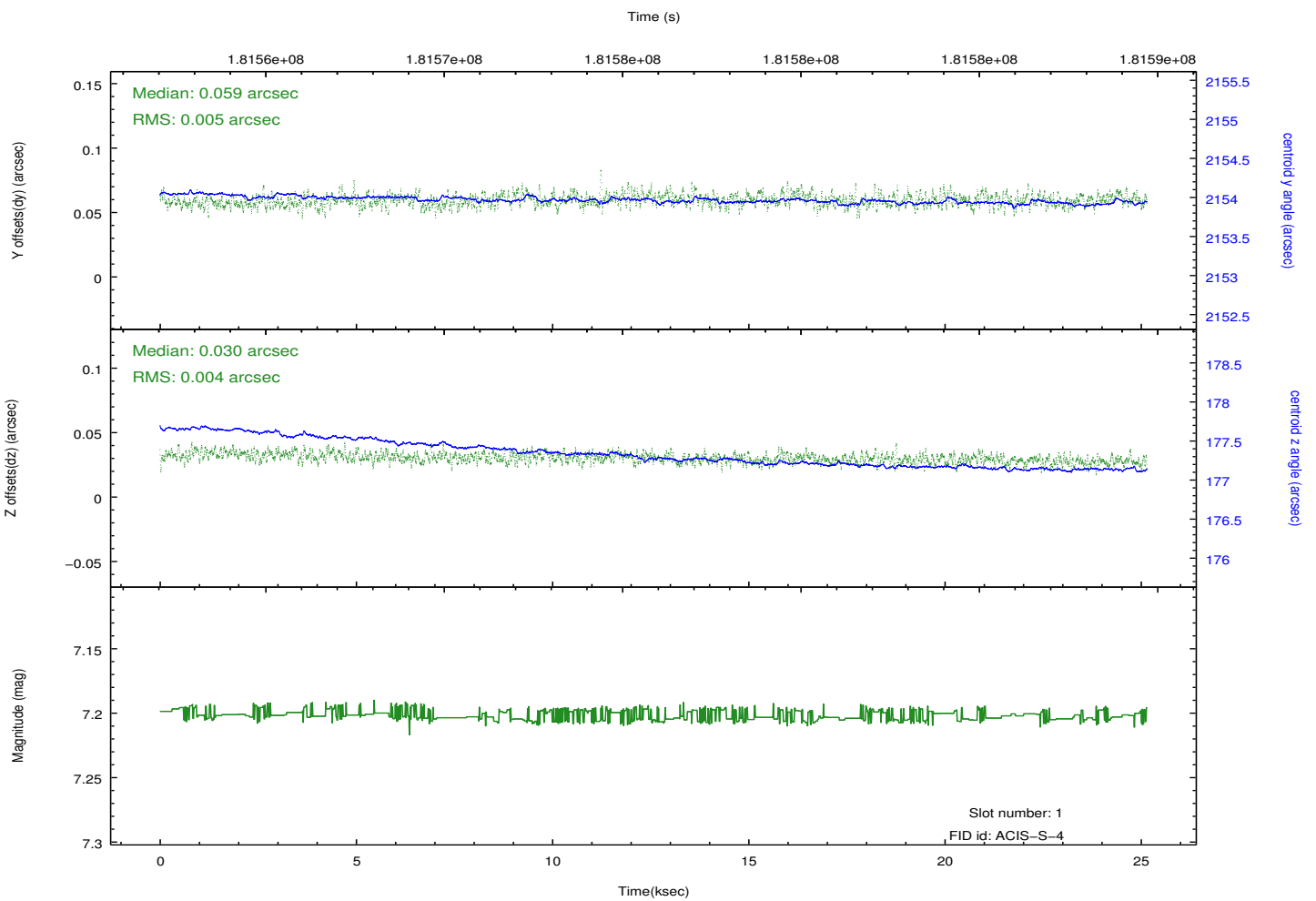
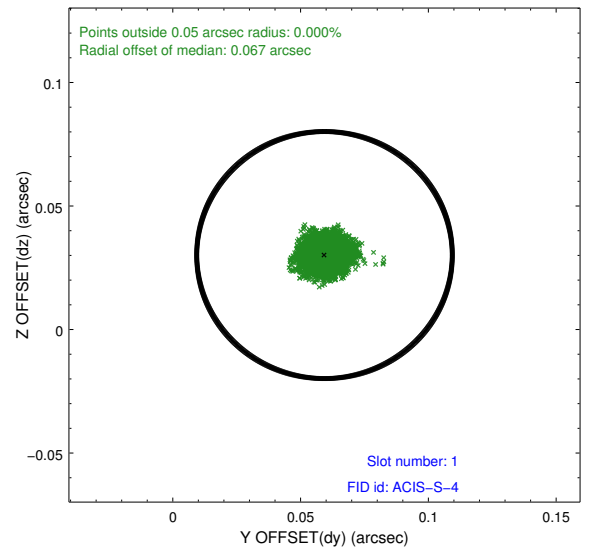
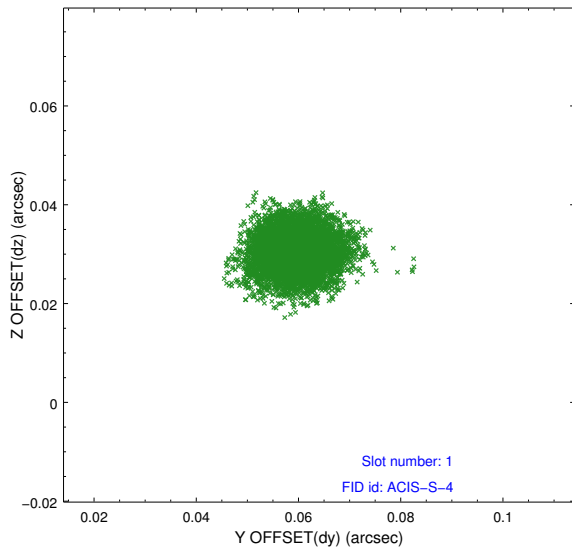


2.5 FID Slots

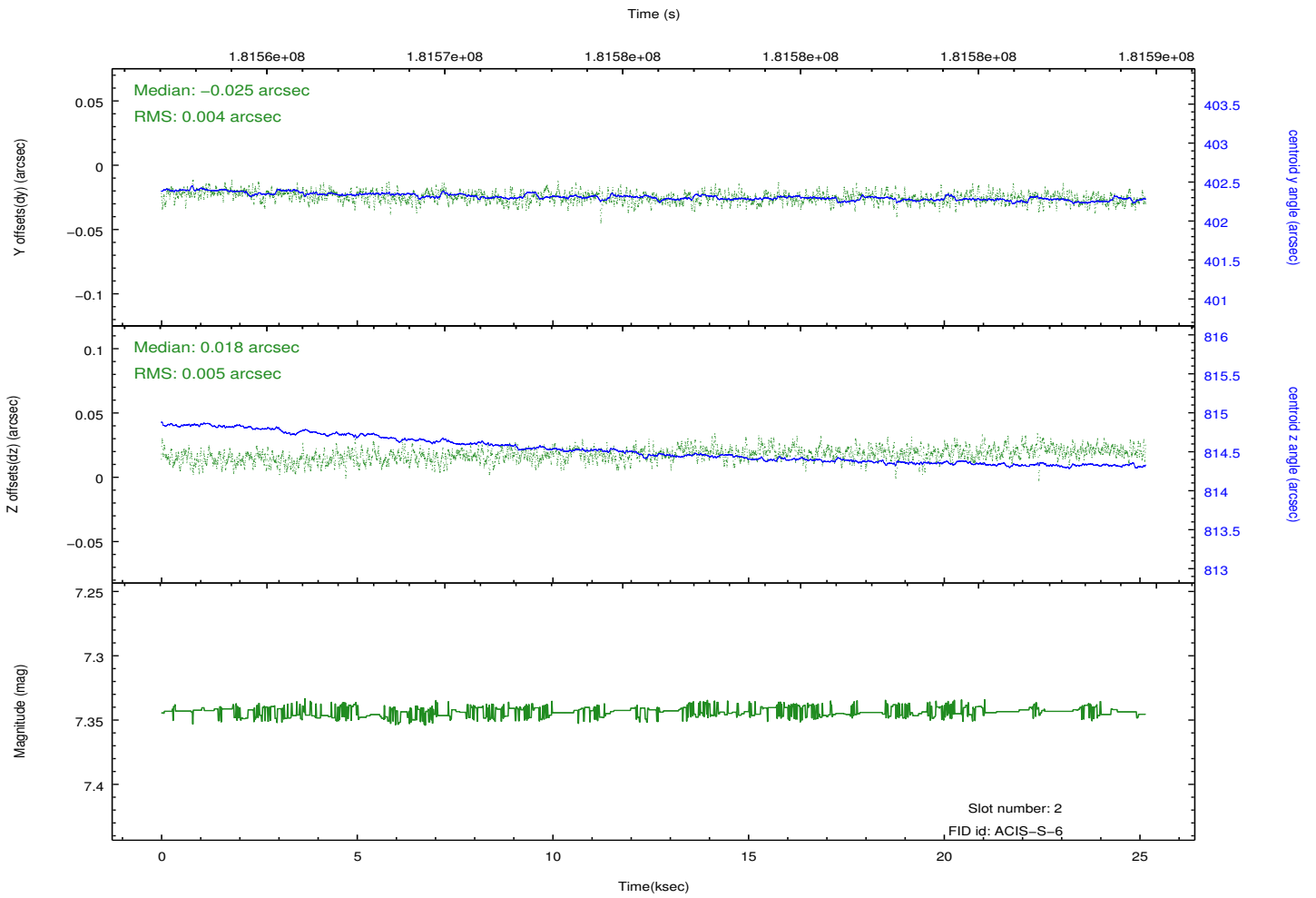
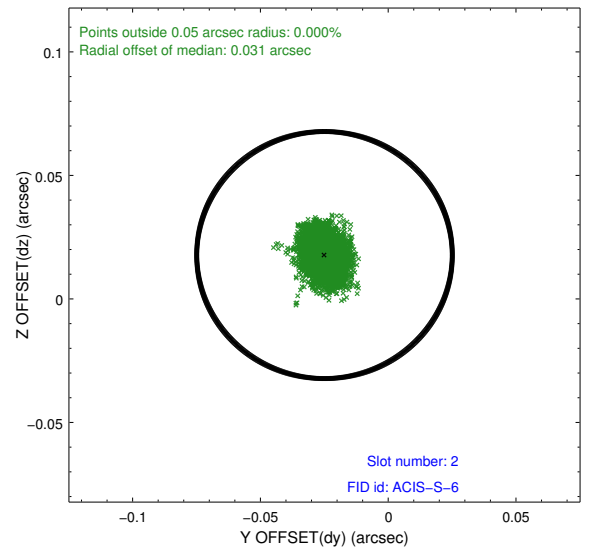
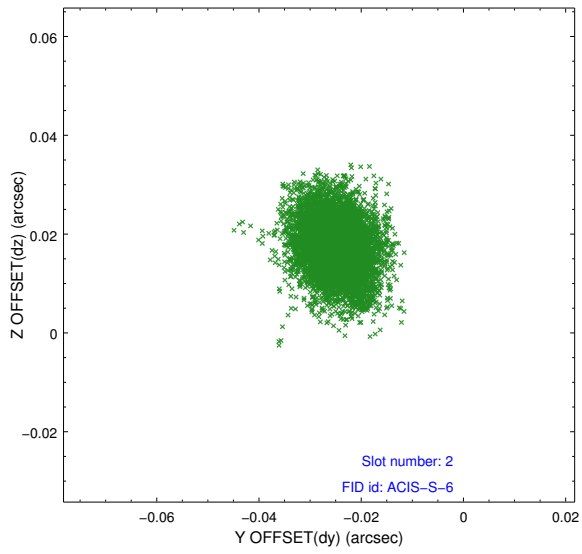
2.5.1 Slot 0



2.5.2 Slot 1



2.5.3 Slot 2



A Summary

A.1 Status

V&V Scientist	Beth Sundheim
V&V Date (YYYY-MM-DD)	2012.11.19
V&V Edition	1
V&V Disposition and Status	OK
V&V Charge Time	25.148

A.2 Comments