

V&V Reference Report

L2 ASCDS Version : 8.4.5

Observation 3895 - L2 Version 3
Chandra X-Ray Center

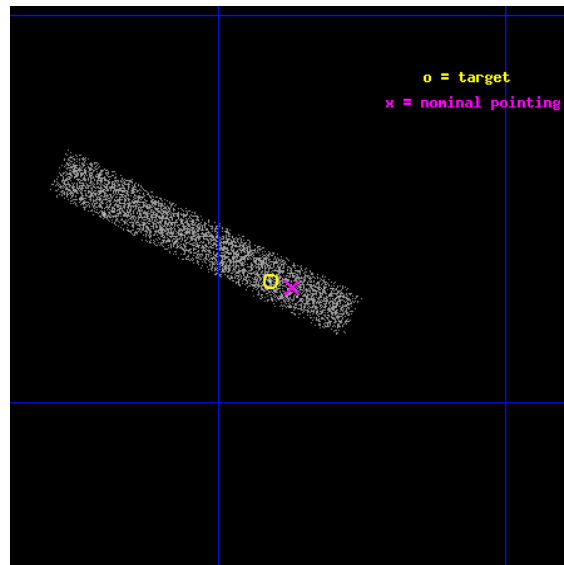
L2 Processing Date : Nov 1 2012

Contents

1	Front	2
2	OBI	3
2.1	OBI	3
2.1.1	Images	3
2.1.2	Bias	3
2.1.3	Parameters	4
2.1.4	Events	4
2.2	Compared Parameters	5
2.3	Aspect	6
2.4	Star Slots	9
2.4.1	Slot 3	9
2.4.2	Slot 4	10
2.4.3	Slot 5	11
2.4.4	Slot 6	12
2.4.5	Slot 7	13
2.5	FID Slots	14
2.5.1	Slot 0	14
2.5.2	Slot 1	15
2.5.3	Slot 2	16
A	Summary	17
A.1	Status	17
A.2	Comments	17

1 Front

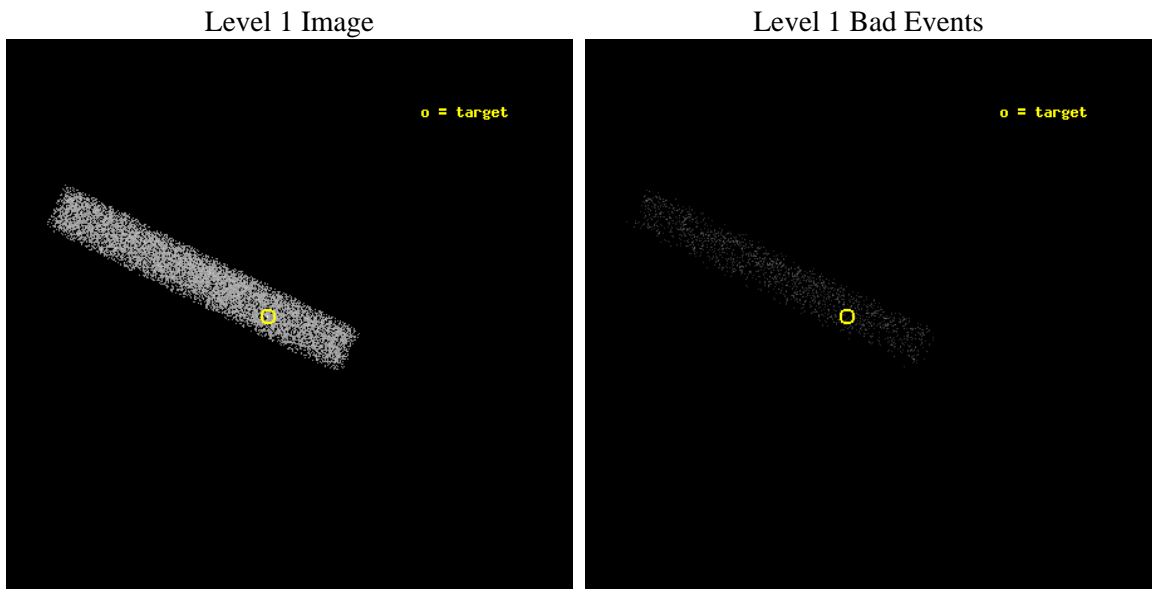
seq_num	500374	Sequence number
obs_id	3895	Observation id
title	IS AX J1845-0258 AN ANOMALOUS X-RAY PULSAR?	Proposal title
observer	Dr. Victoria Kaspi	Principal investigator
object	AX J1845-0258	Source name
dtycycle	0	
cycle	P	events from which exps? Prim/Second/Both
ra_targ	281.2275	Observer's specified target RA [deg]
dec_targ	-2.948056	Observer's specified target Dec [deg]
ra_nom	281.21819702714	Nominal RA [deg]
dec_nom	-2.9507737883205	Nominal Dec [deg]
roll_nom	206.27654432747	Nominal Roll [deg]
revision	3	Processing version of data
ontime	12051.200179547	Sum of GTIs [s]
liveltime	10929.802448347	Livetime [s]
ontime7	12051.200179547	Sum of GTIs [s]
l2events	5844	Number of level 2 events



2 OBI

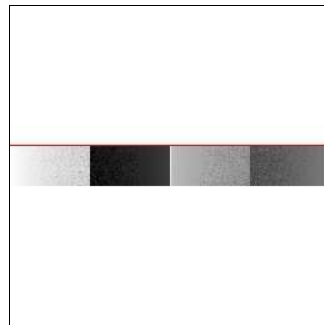
2.1 OBI

2.1.1 Images



2.1.2 Bias

Chip 7



2.1.3 Parameters

obi_num	0	Obi number	sched_exp_time	11866.000000	[s] Scheduled observation exposure time
ascdsver	8.4.5	Processing system revision	ontime	12051.200179547	Sum of GTIs [s]
caldbver	4.5.2	 	ontime7	12051.200179547	Sum of GTIs [s]
date	2012-11-01T03:42:02	Date and time of file creation	l1events	13705	Number of level 1 events
revision	3	Processing version of data			

2.1.4 Events

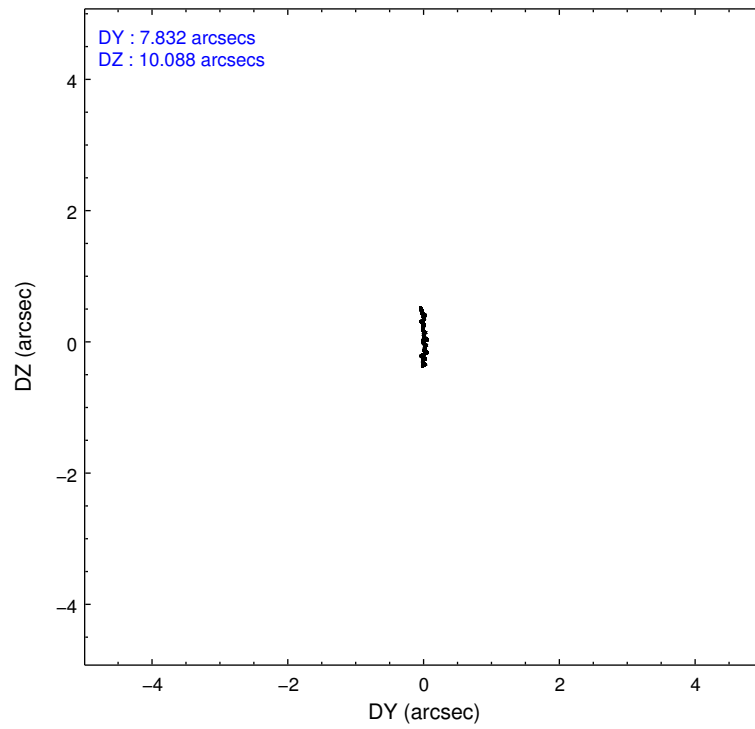
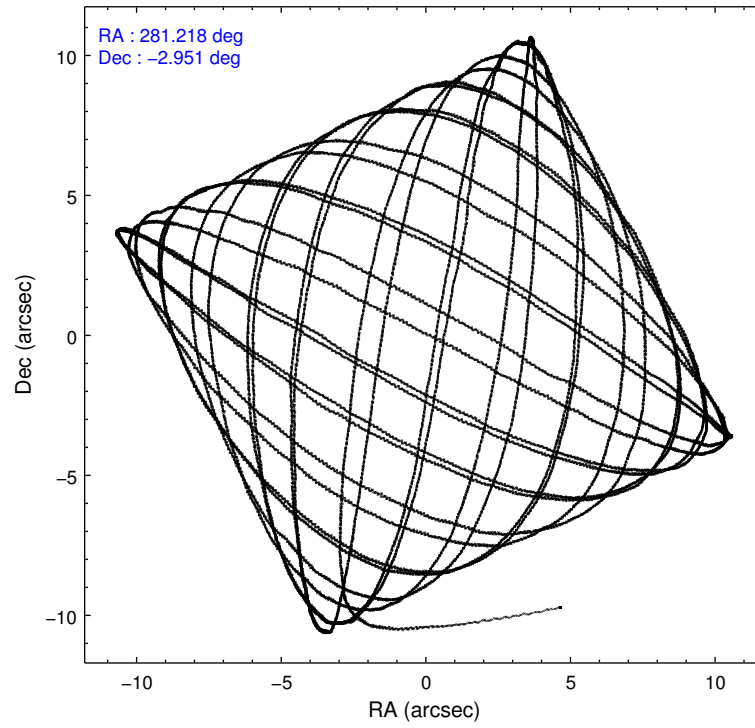
	ccd 7
level 1 events	13705
rejected events	7639
rejected %	55%

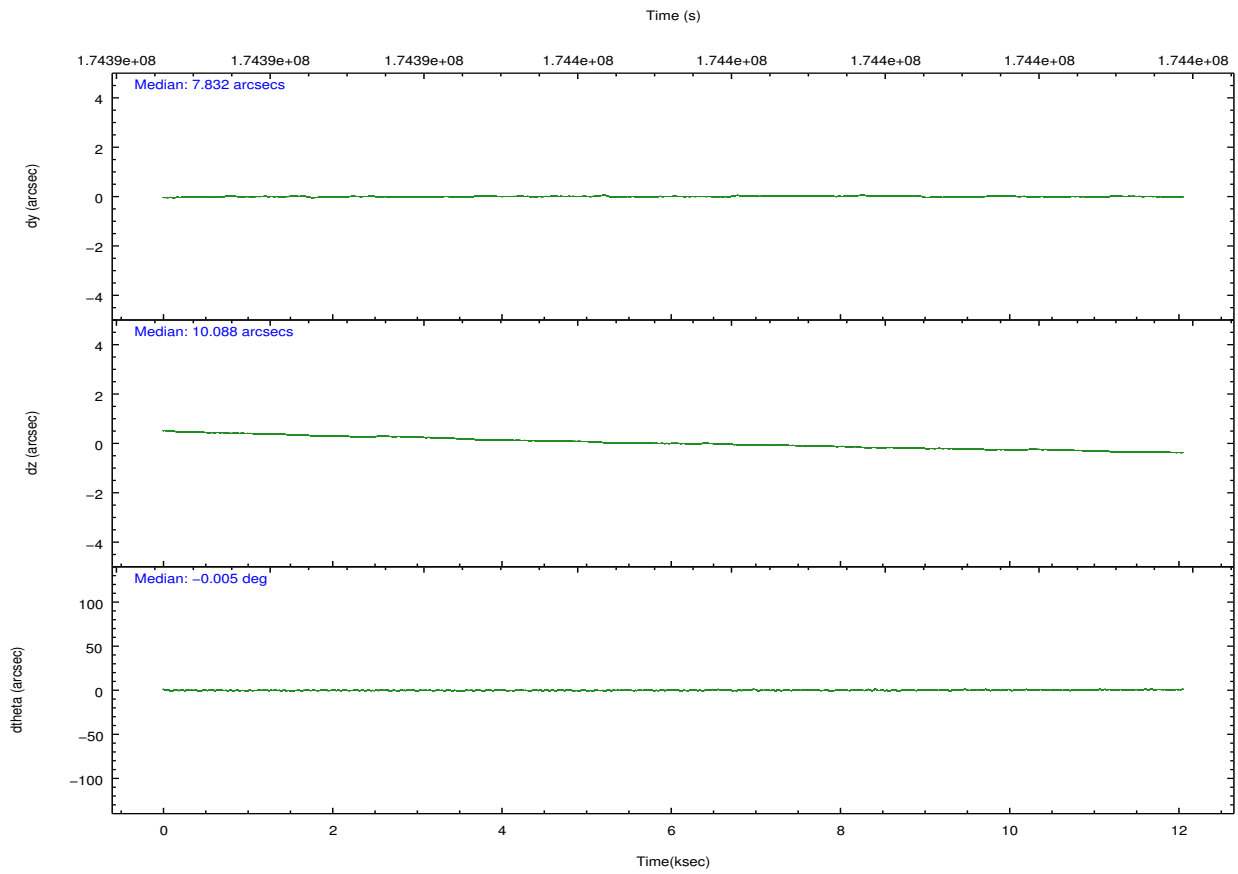
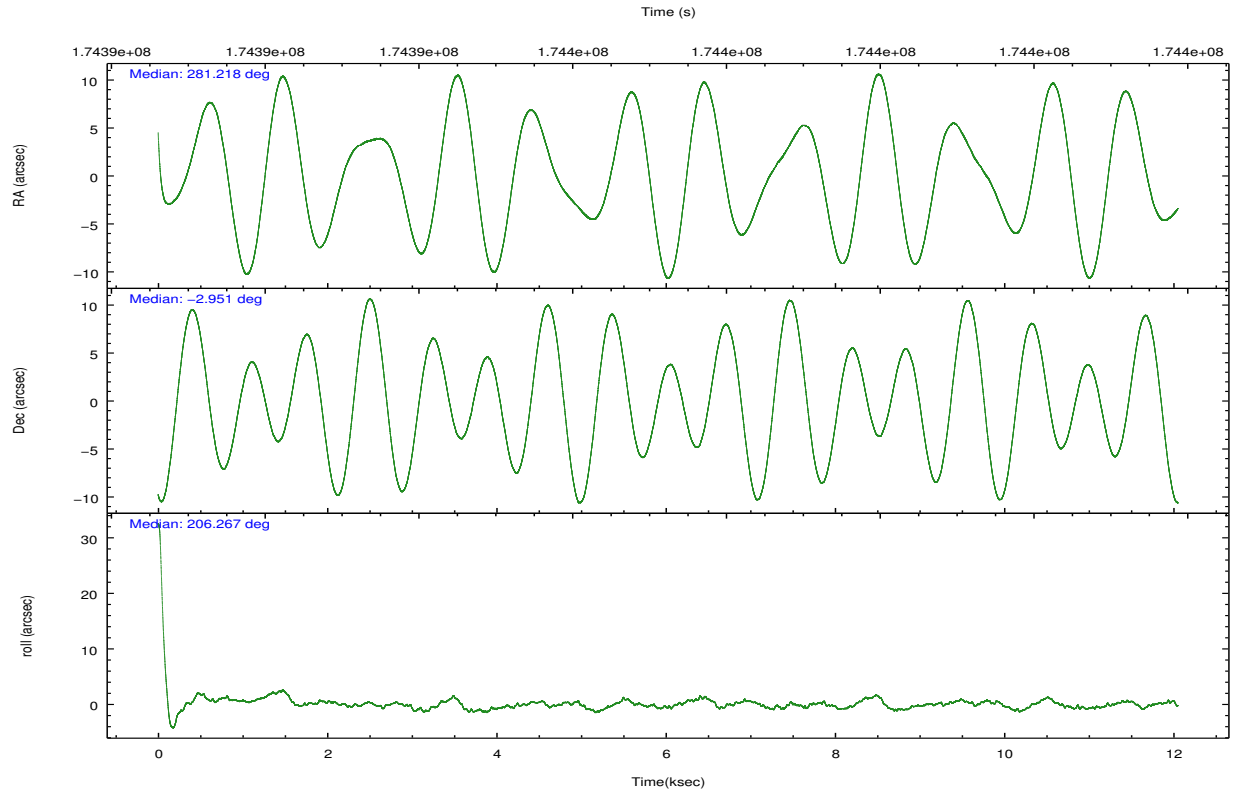
	ccd 7
grade 0 events	662
	4%
grade 1 events	14
	0%
grade 2 events	1265
	9%
grade 3 events	817
	5%
grade 4 events	826
	6%
grade 5 events	1281
	9%
grade 6 events	2833
	20%
grade 7 events	6007
	43%

2.2 Compared Parameters

Parameter	Planned	Actual	Parameter	Planned	Actual
Instrument	ACIS	ACIS	Obspar format version number	7	7
Detector	ACIS-7	ACIS-7	Obspar file type	PREDICTED	ACTUAL
Grating	NONE	NONE	Obspar update status	NONE	UPDATED
Data mode	VFAINT	VFAINT	Number of optional ACIS chips dropped	0	0
Observation mode	POINTING	POINTING	On-chip summing requested	N	N
[deg] Pointing RA	281.233033	281.2181970271408	Subarray requested	CUSTOM	1/8
[deg] Pointing Dec	-2.927902	-2.950773788320459	Subarray start row	449	449
[deg] Pointing Roll	206.120639	206.2765443274652	Subarray row count	128	128
[mm] SIM focus pos	-0.684267	-0.6828225247311905	Alternating exposures requested	N	N
[mm] SIM defocus	0	0.001444936568705701	[s] Primary exposure time	0.000000	0.4
[mm] SIM translation stage pos	-190.132523	-190.1400660498719			
[mm] SIM translation stage offset	0	0.00754346686406393			
[s] Observation start time (MET)	174391397.184000	174390416.13133			
Observation start date	2003-07-12T10:02:13	2003-07-12T09:46:56			
[s] Observation end time (MET)	174403263.184000	174404372.53193			
Observation end date	2003-07-12T13:19:59	2003-07-12T13:39:32			
Read mode	TIMED	TIMED			

2.3 Aspect



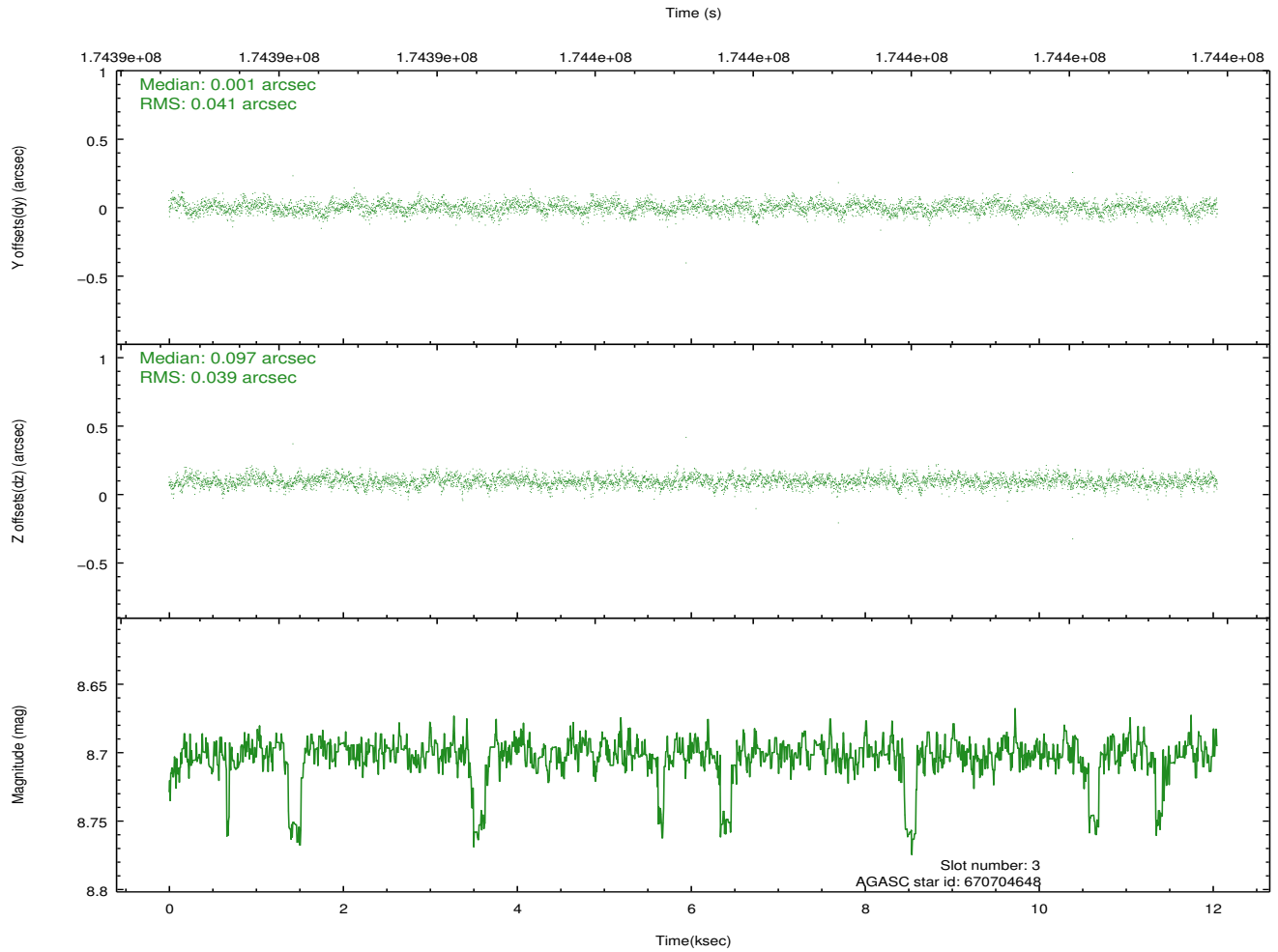
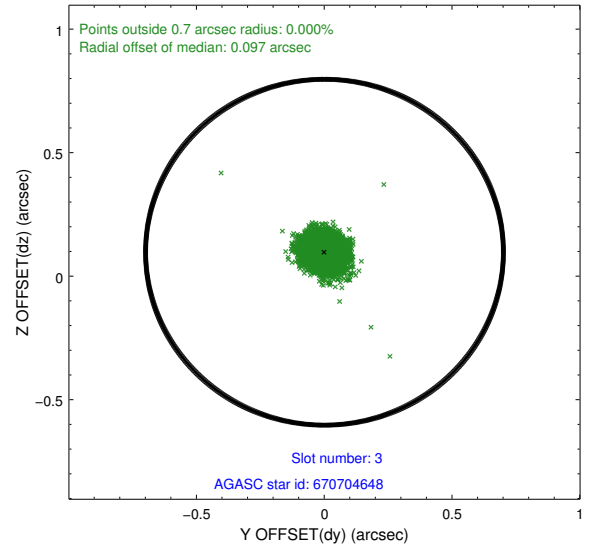
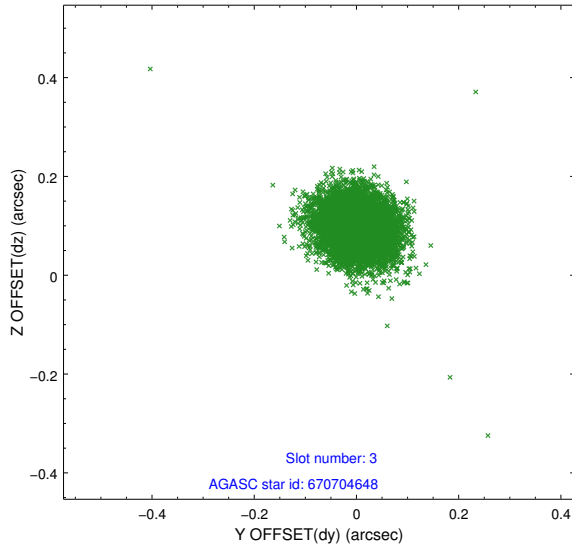


Slot Statistics

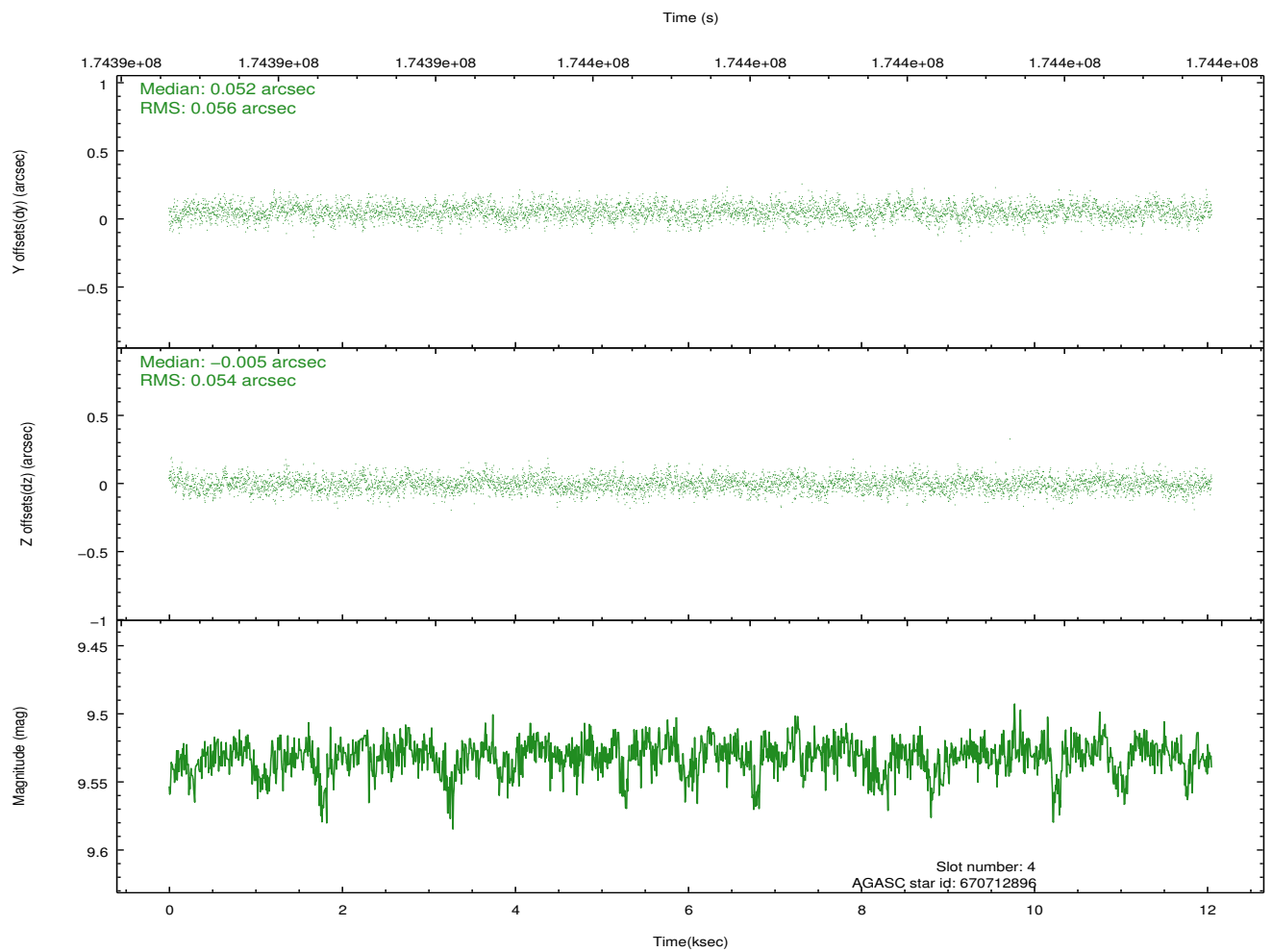
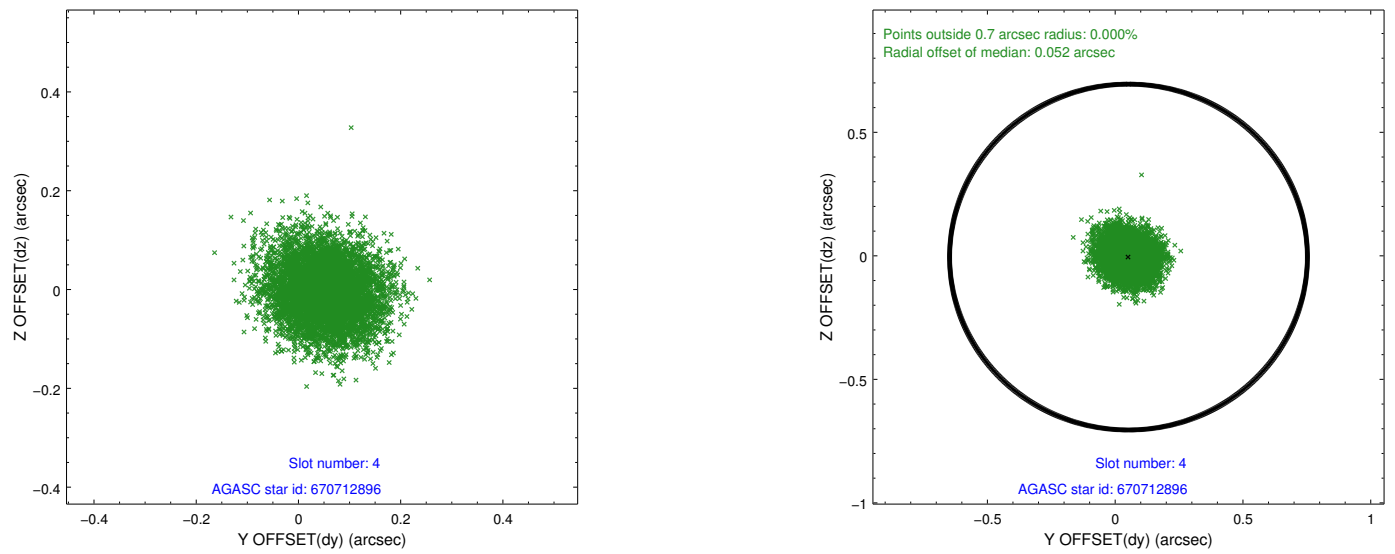
slot	status	id	mag	n_pts	med_dy	med_dz	dr1	dr2	ra	dec	mean_y	mean_z
0	FID	ACIS-S-2	7.10	2940	-0.040	-0.027	0.009	0.014	0.000000	0.000000	-760.61	-1731.40
1	FID	ACIS-S-4	7.20	2940	0.093	0.026	0.006	0.011	0.000000	0.000000	2152.57	176.77
2	FID	ACIS-S-5	7.23	2940	-0.085	0.009	0.009	0.014	0.000000	0.000000	-1813.00	170.81
3	GUIDE	670704648	8.70	5876	0.001	0.097	0.059	0.095	280.736676	-2.935747	1615.40	-759.74
4	GUIDE	670712896	9.53	5877	0.052	-0.005	0.084	0.135	281.136637	-3.286600	880.58	1007.16
5	GUIDE	670713072	9.01	5880	-0.022	0.098	0.085	0.134	281.205407	-3.604132	1161.12	2142.45
6	GUIDE	670713328	7.56	5876	-0.058	-0.125	0.050	0.080	280.824681	-3.187771	1730.37	194.29
7	GUIDE	670714008	9.02	5878	0.030	-0.066	0.076	0.123	281.129237	-3.153193	692.70	563.92

2.4 Star Slots

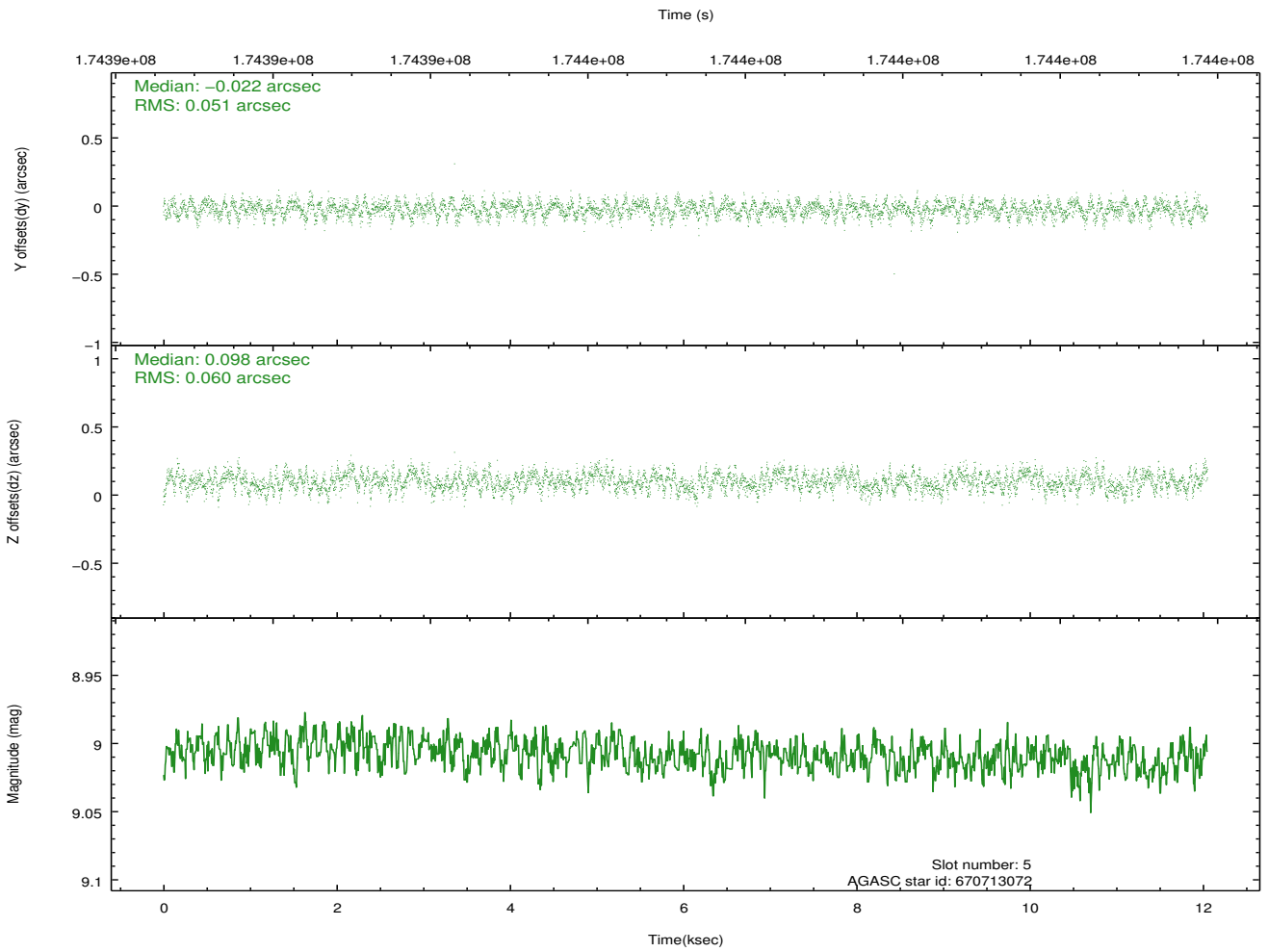
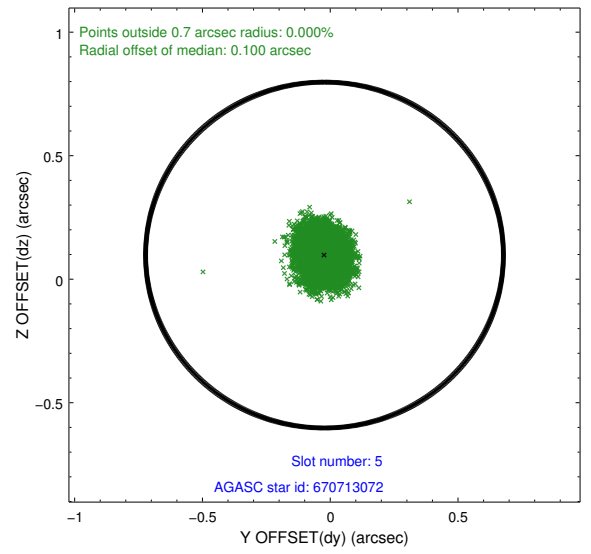
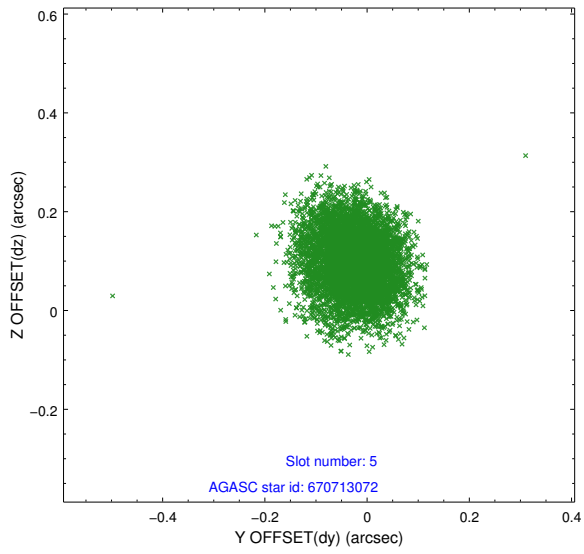
2.4.1 Slot 3



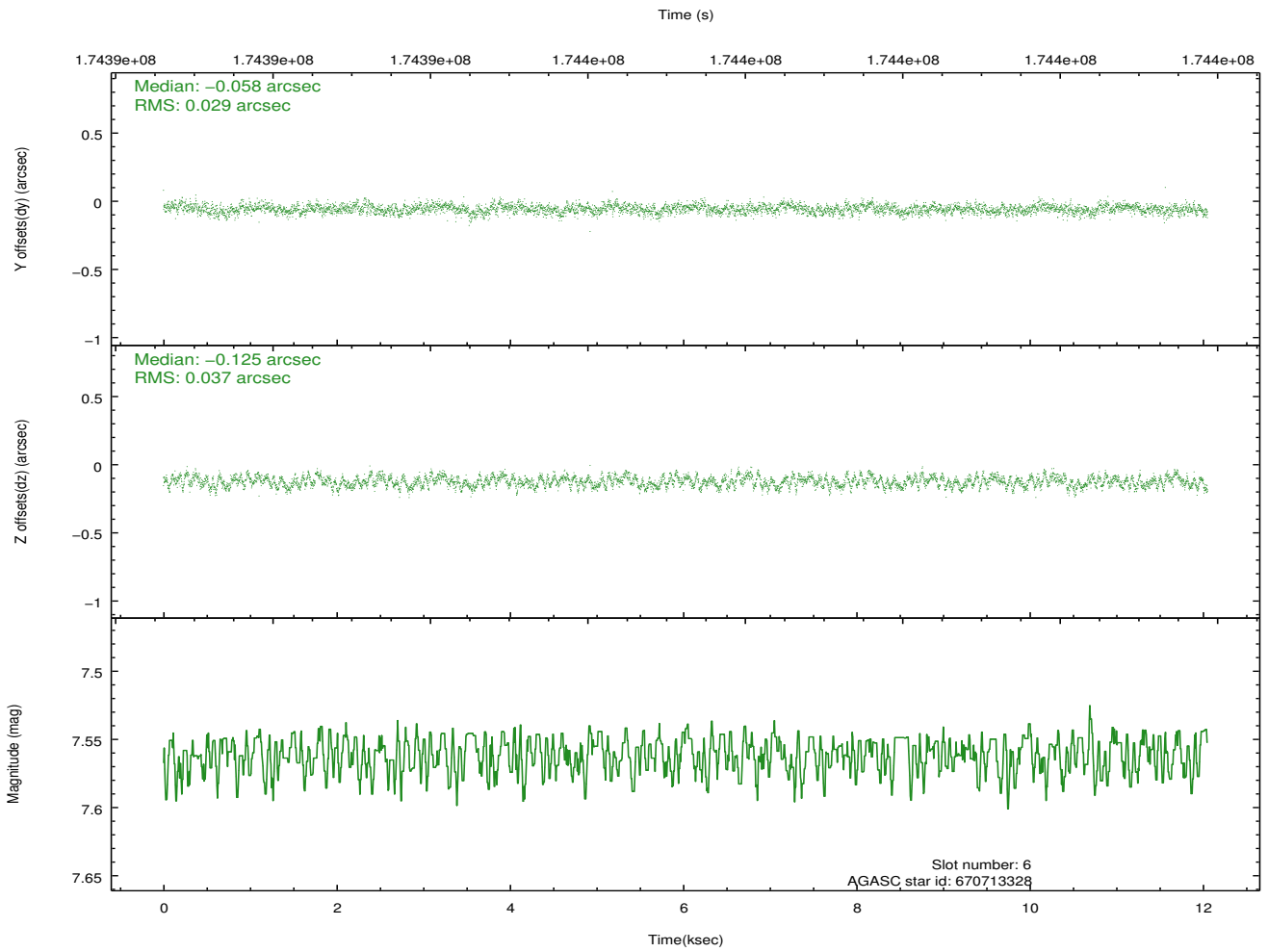
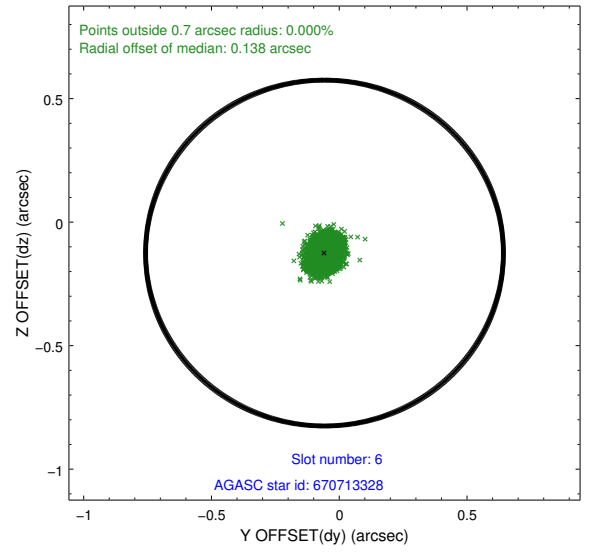
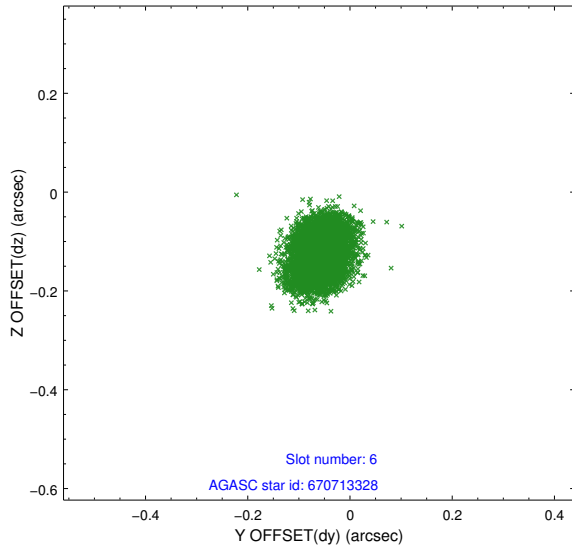
2.4.2 Slot 4



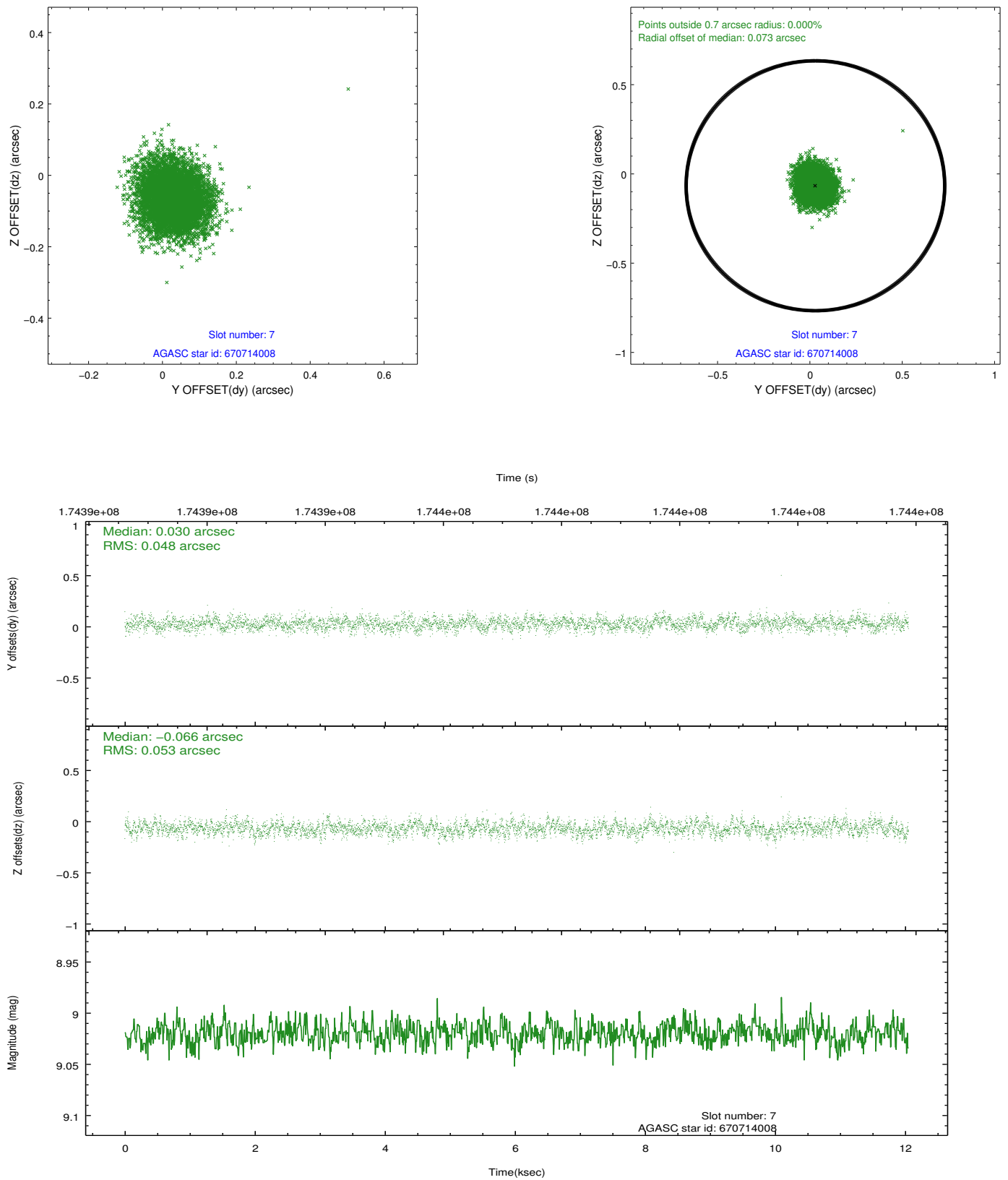
2.4.3 Slot 5



2.4.4 Slot 6

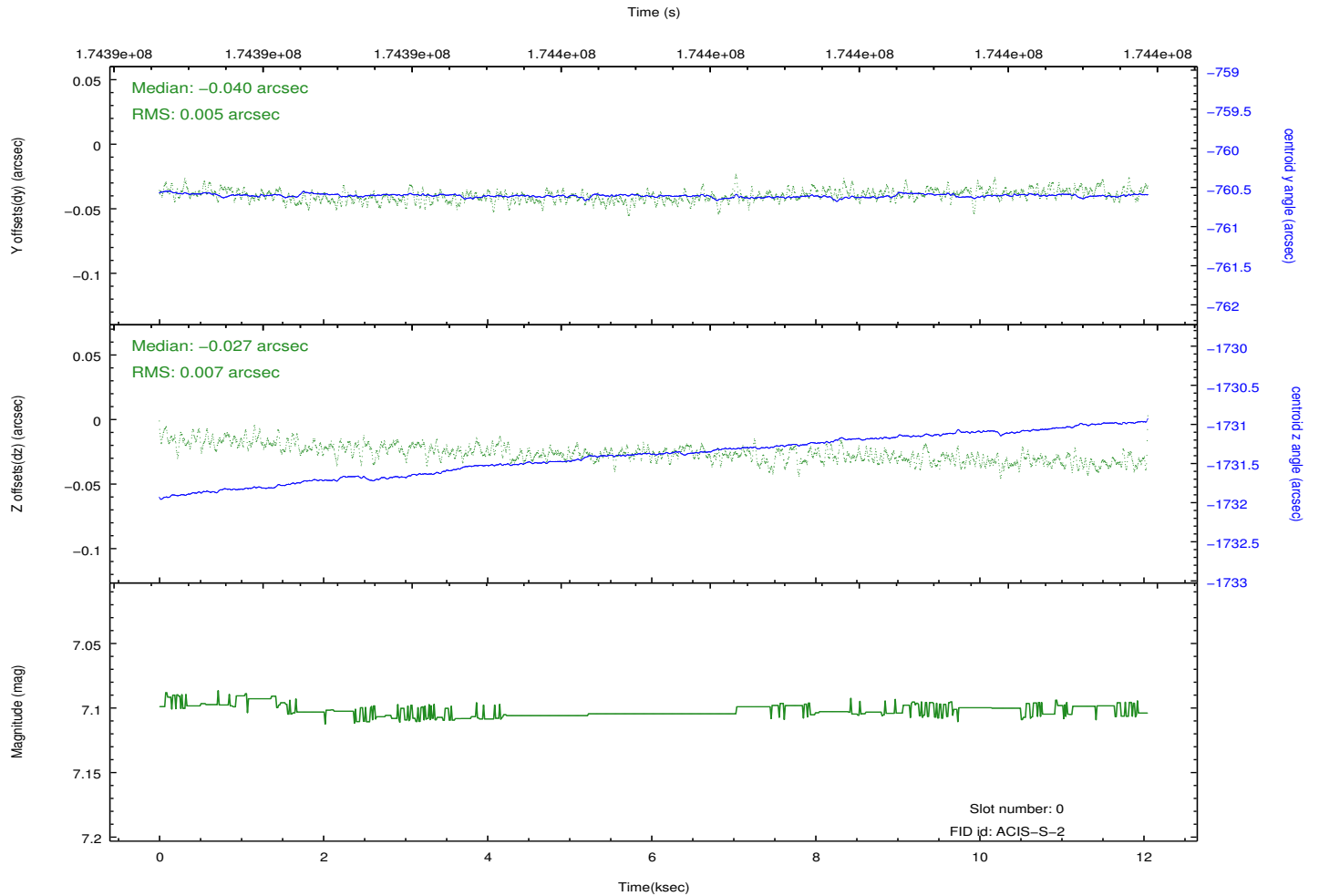
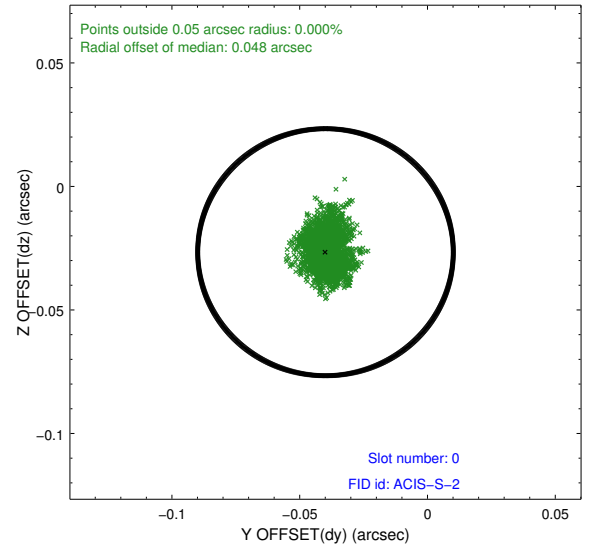
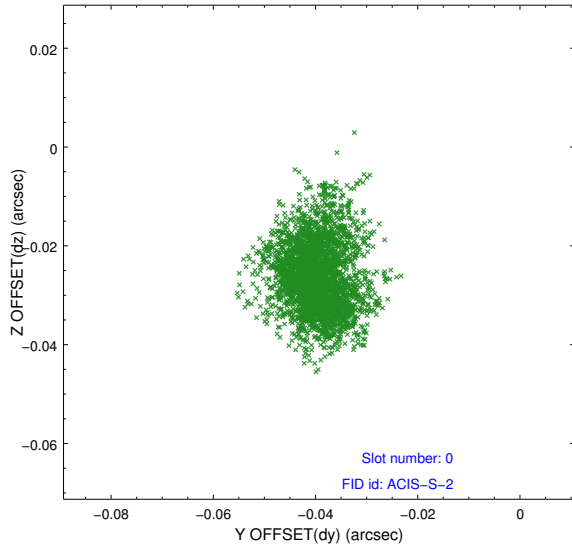


2.4.5 Slot 7

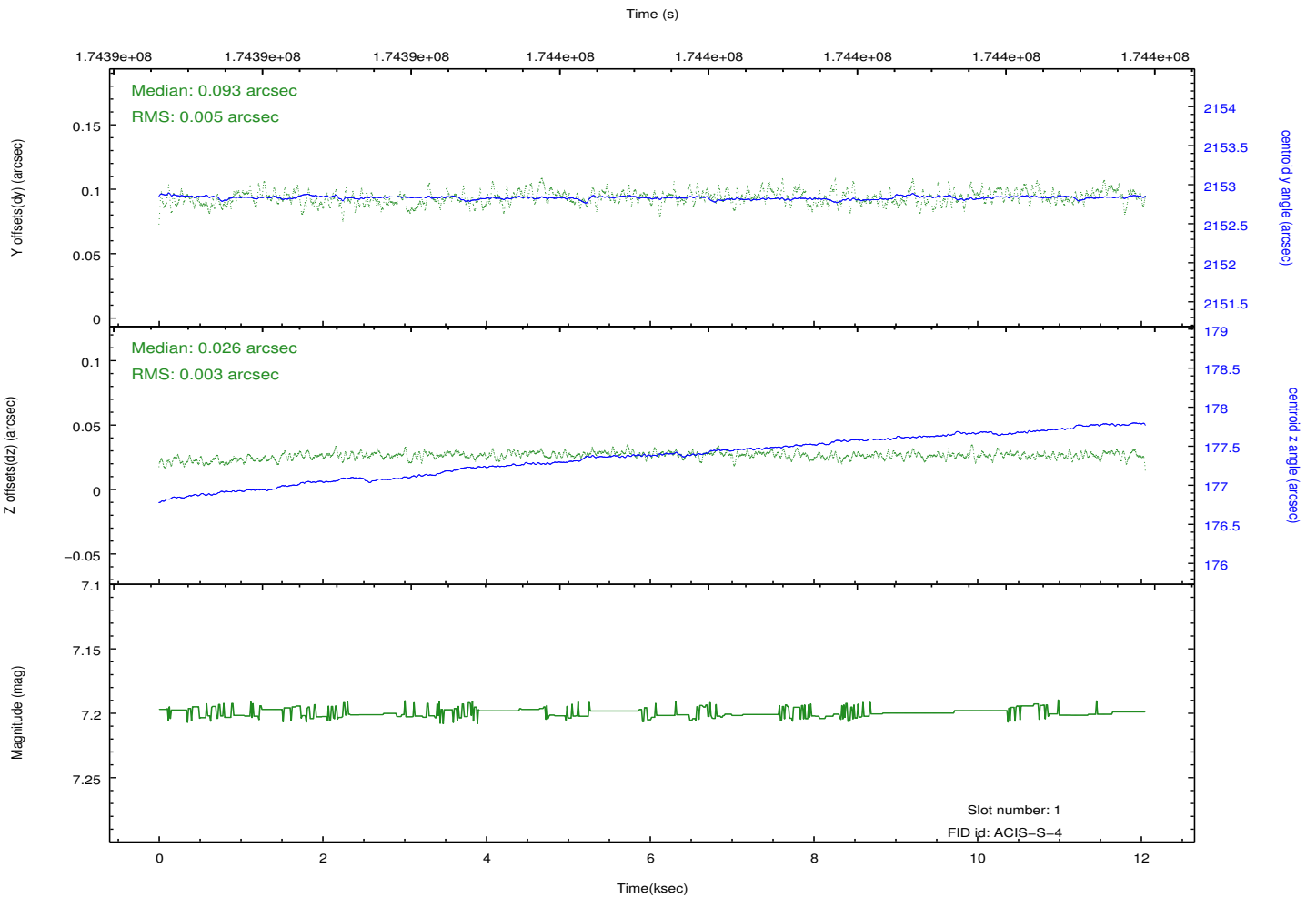
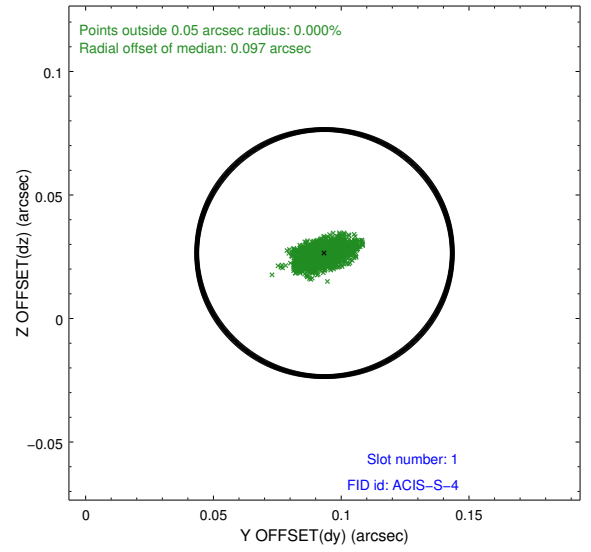
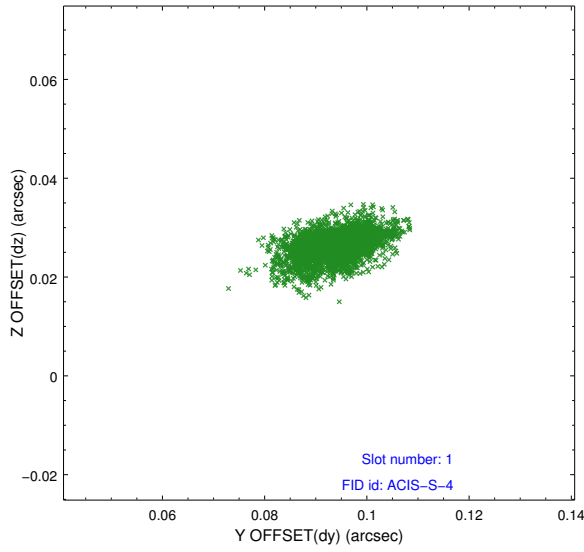


2.5 FID Slots

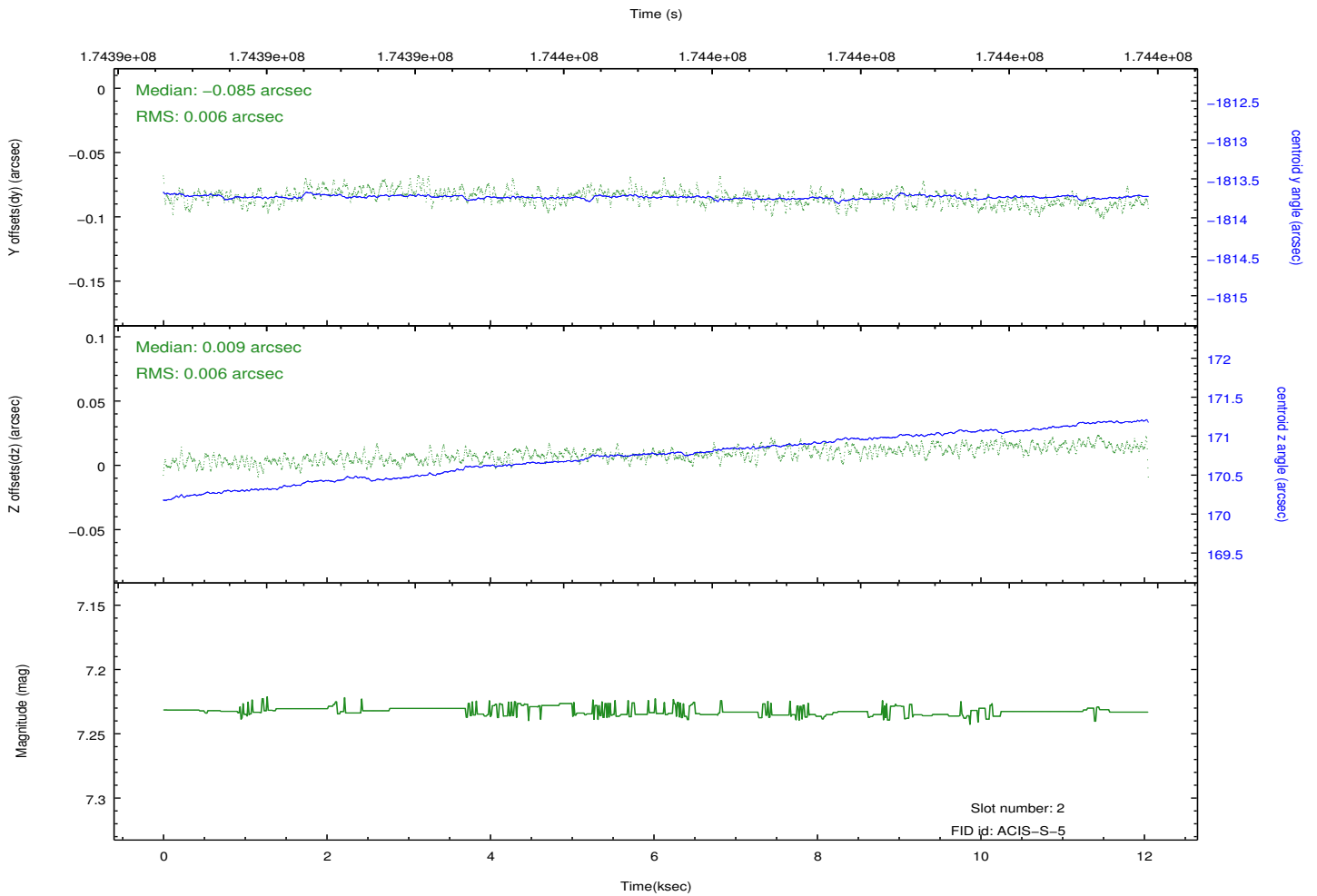
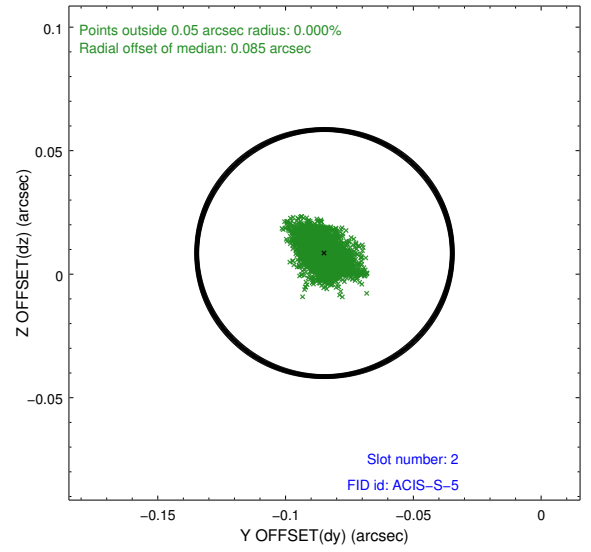
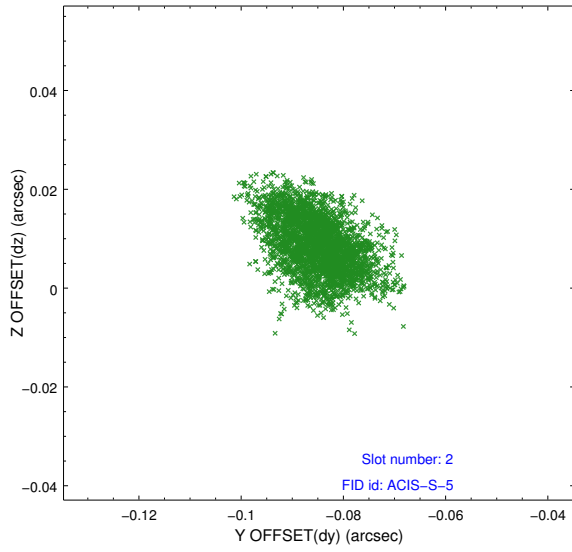
2.5.1 Slot 0



2.5.2 Slot 1



2.5.3 Slot 2



A Summary

A.1 Status

V&V Scientist	Jen Lauer
V&V Date (YYYY-MM-DD)	2012.11.16
V&V Edition	1
V&V Disposition and Status	OK
V&V Charge Time	12.051

A.2 Comments