

V&V Reference Report

L2 ASCDS Version : 8.4.5

Observation 3965 - L2 Version 3
Chandra X-Ray Center

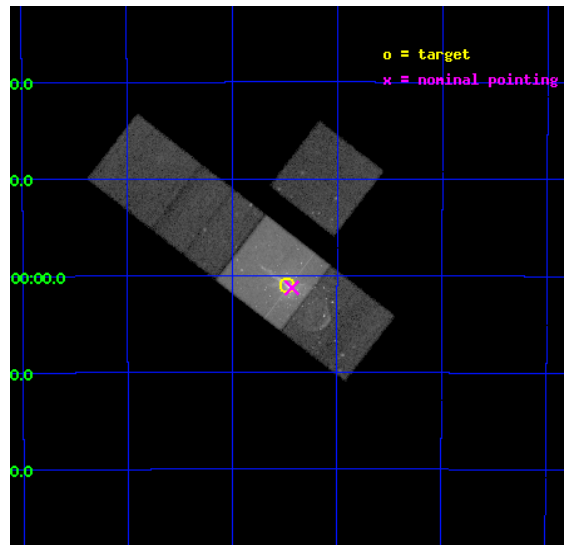
L2 Processing Date : Nov 3 2012

Contents

1	Front	2
2	OBI	3
2.1	OBI	3
2.1.1	Images	3
2.1.2	Bias	3
2.1.3	Parameters	4
2.1.4	Events	4
2.2	Compared Parameters	5
2.3	Aspect	6
2.4	Star Slots	9
2.4.1	Slot 3	9
2.4.2	Slot 4	10
2.4.3	Slot 5	11
2.4.4	Slot 6	12
2.4.5	Slot 7	13
2.5	FID Slots	14
2.5.1	Slot 0	14
2.5.2	Slot 1	15
2.5.3	Slot 2	16
A	Summary	17
A.1	Status	17
A.2	Comments	17

1 Front

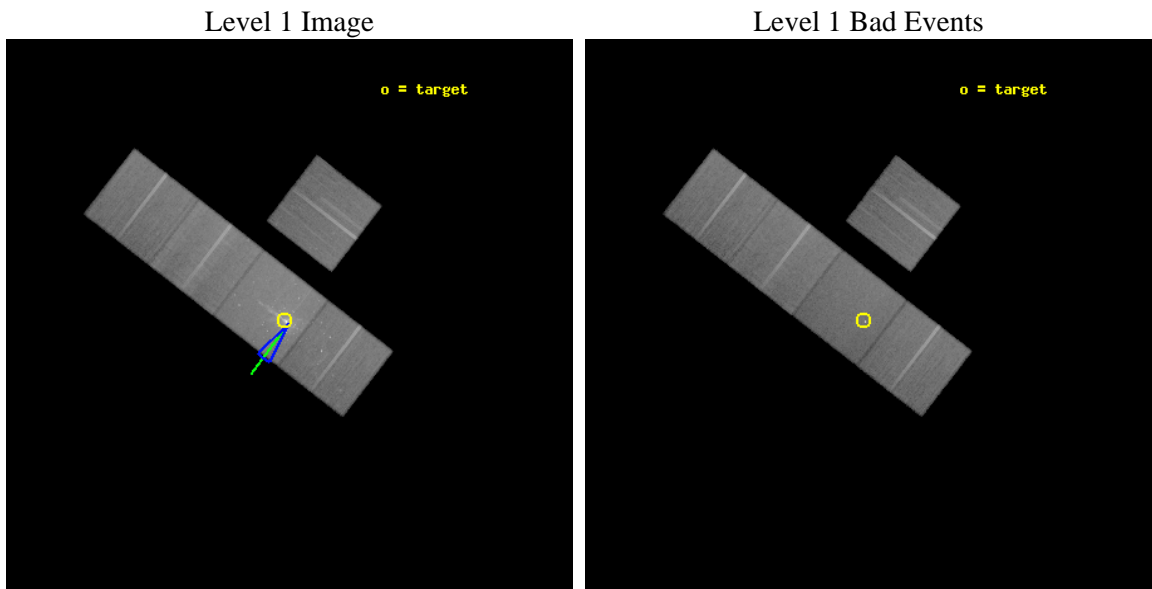
seq_num	700644	Sequence number
obs_id	3965	Observation id
title	A SEARCH FOR PROPER MOTIONS, INTENSITY VARIATIONS, AND SPECTRAL CHANGES IN THE X-RAY KNOTS OF THE CENTAURUS A JET	Proposal title
observer	Dr. Ralph Kraft	Principal investigator
object	CENTAURUS A	Source name
dtcycle	0	
cycle	P	events from which exps? Prim/Second/Both
ra_targ	201.369583	Observer's specified target RA [deg]
dec_targ	-43.016583	Observer's specified target Dec [deg]
ra_nom	201.35785993094	Nominal RA [deg]
dec_nom	-43.021077791371	Nominal Dec [deg]
roll_nom	217.752068559	Nominal Roll [deg]
revision	3	Processing version of data
ontime	50173.4999035	Sum of GTIs [s]
livetime	49517.946190068	Livetime [s]
ontime3	50170.35893327	Sum of GTIs [s]
ontime6	50173.4999035	Sum of GTIs [s]
ontime7	50173.4999035	Sum of GTIs [s]
ontime8	50173.4999035	Sum of GTIs [s]
ontime9	50173.4999035	Sum of GTIs [s]
l2events	441695	Number of level 2 events



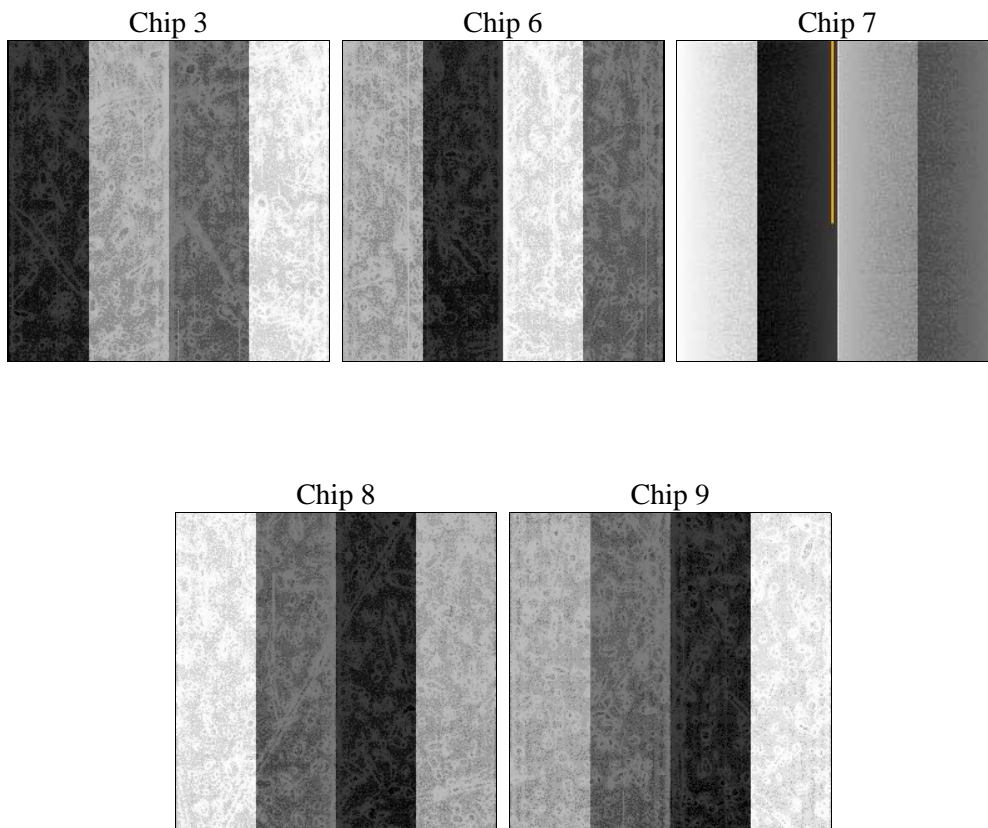
2 OBI

2.1 OBI

2.1.1 Images



2.1.2 Bias



2.1.3 Parameters

obi_num	0	Obi number	sched_exp_time	50000.000000	[s] Scheduled observation exposure time
ascdsver	8.4.5	Processing system revision	ontime	50173.4999035	Sum of GTIs [s]
caldbver	4.5.2	 	ontime3	50170.35893327	Sum of GTIs [s]
date	2012-11-03T22:23:12	Date and time of file creation	ontime6	50173.4999035	Sum of GTIs [s]
revision	3	Processing version of data	ontime7	50173.4999035	Sum of GTIs [s]
			ontime8	50173.4999035	Sum of GTIs [s]
			ontime9	50173.4999035	Sum of GTIs [s]
			l1events	1964838	Number of level 1 events

2.1.4 Events

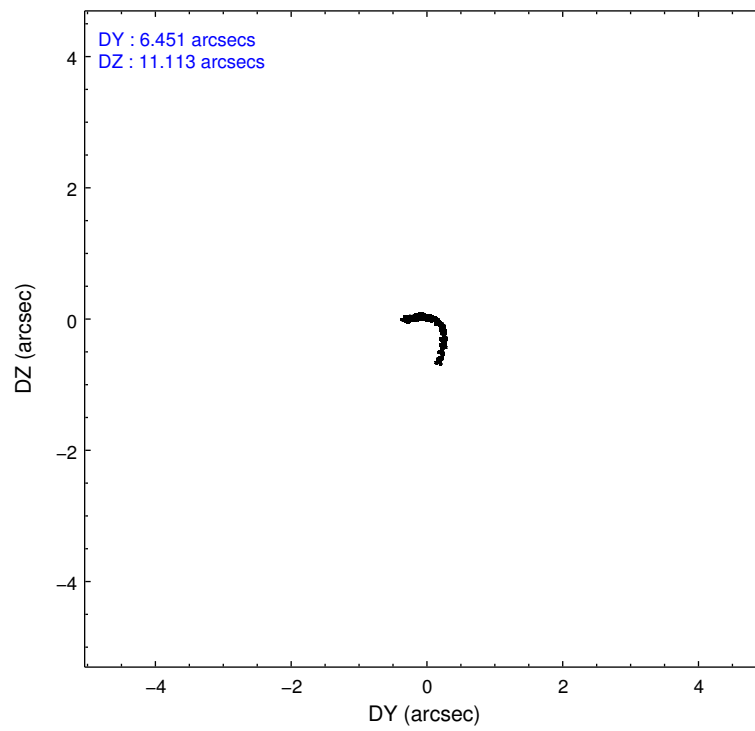
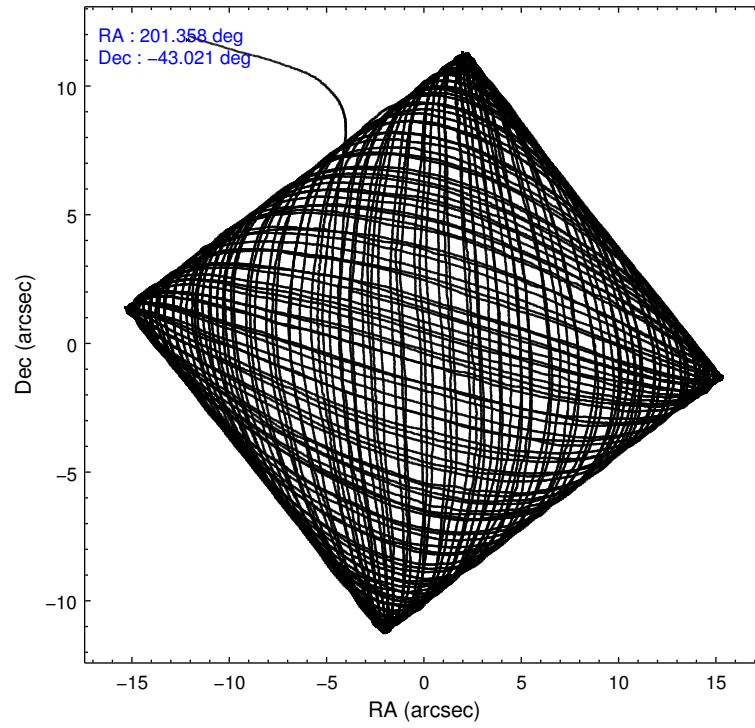
	ccd 3	ccd 6	ccd 7	ccd 8	ccd 9
level 1 events	323022	348910	550202	416000	326704
rejected events	283697	295488	264210	327757	284956
rejected %	87%	84%	48%	78%	87%

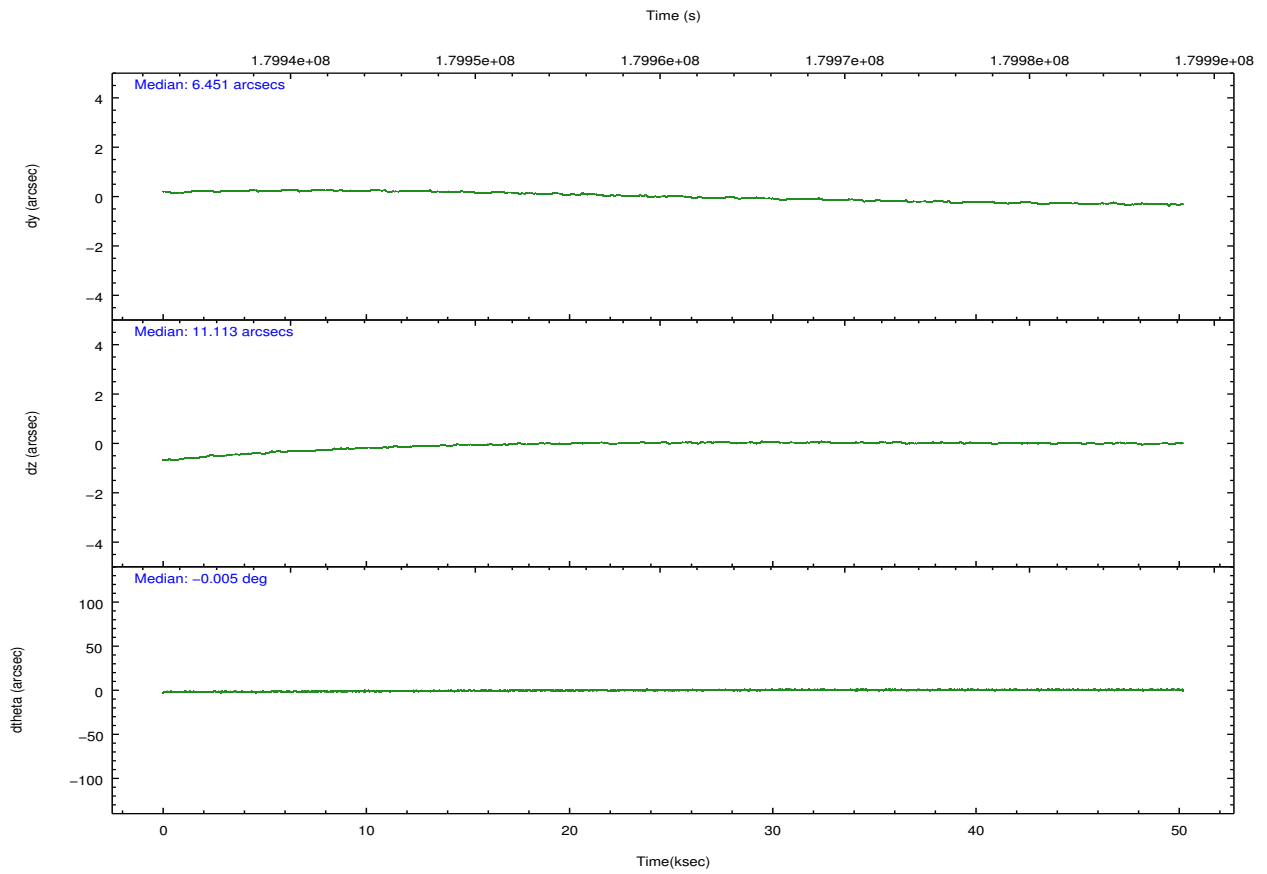
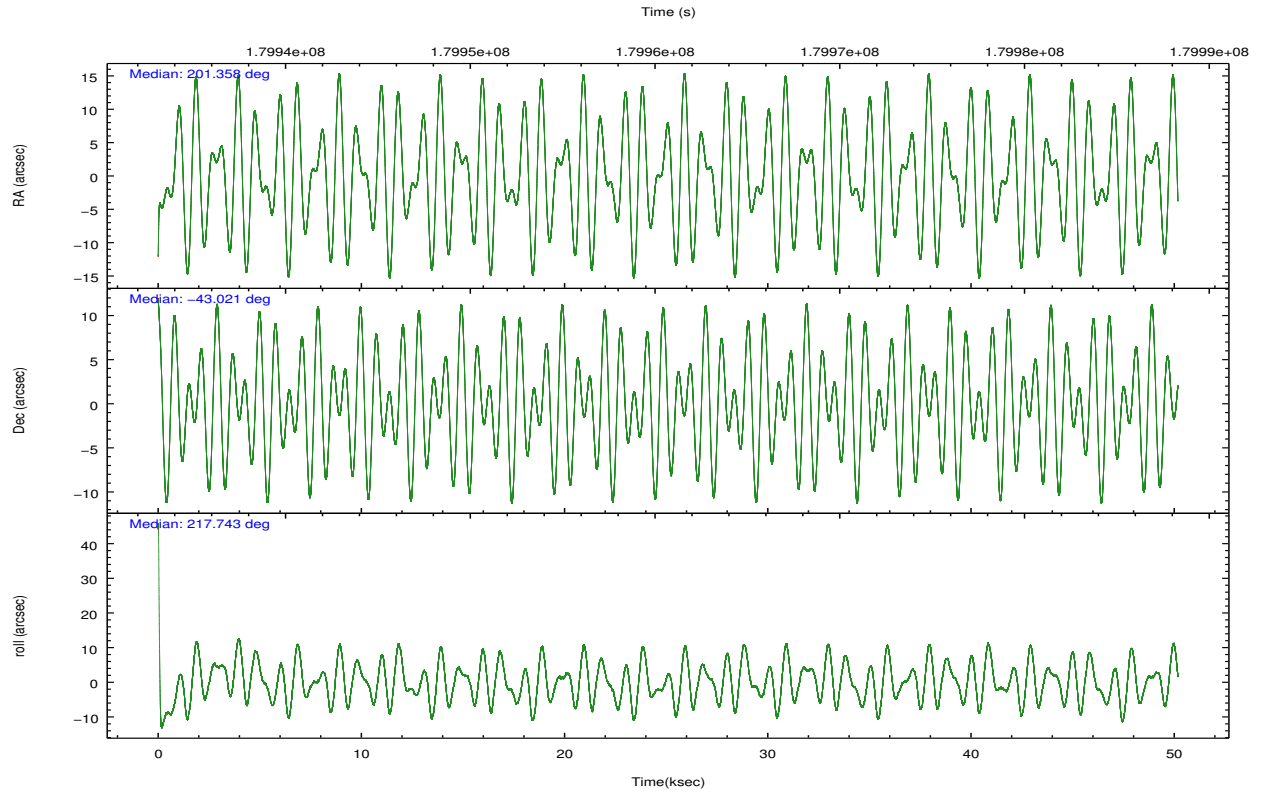
	ccd 3	ccd 6	ccd 7	ccd 8	ccd 9
grade 0 events	18507	28496	47218	31082	19051
	5%	8%	8%	7%	5%
grade 1 events	200	207	885	297	196
	0%	0%	0%	0%	0%
grade 2 events	7402	9205	63463	18663	7897
	2%	2%	11%	4%	2%
grade 3 events	3760	4265	28570	9373	4086
	1%	1%	5%	2%	1%
grade 4 events	3850	4117	28245	8708	3882
	1%	1%	5%	2%	1%
grade 5 events	14068	15130	43571	19300	15883
	4%	4%	7%	4%	4%
grade 6 events	6554	8293	122306	22037	7665
	2%	2%	22%	5%	2%
grade 7 events	268681	279197	215944	306540	268044
	83%	80%	39%	73%	82%

2.2 Compared Parameters

Parameter	Planned	Actual	Parameter	Planned	Actual
Instrument	ACIS	ACIS	Obspar format version number	7	7
Detector	ACIS-36789	ACIS-36789	Obspar file type	PREDICTED	ACTUAL
Grating	NONE	NONE	Obspar update status	NONE	UPDATED
Data mode	FAINT	FAINT	Number of optional ACIS chips dropped	0	0
Observation mode	POINTING	POINTING	On-chip summing requested	N	N
[deg] Pointing RA	201.371493	201.3578599309408	Subarray requested	NONE	NONE
[deg] Pointing Dec	-42.995736	-43.02107779137082	Alternating exposures requested	N	N
[deg] Pointing Roll	217.604721	217.7520685589985	[s] Primary exposure time	0.000000	3.1
[deg] Roll angle	217.000000	217.000000			
[deg] Roll tolerance	10.000000	10.000000			
Roll constraint allows 180D rotation	N	N			
[mm] SIM focus pos	-0.684267	-0.6828225247311905			
[mm] SIM defocus	0	0.001444936568705701			
[mm] SIM translation stage pos	-190.132523	-190.1400660498719			
[mm] SIM translation stage offset	0	0.00754346686406393			
[s] Observation start time (MET)	179935798.184000	179934308.75574			
Observation start date	2003-09-14T14:08:54	2003-09-14T13:45:08			
[s] Observation end time (MET)	179985798.184000	179986775.43299			
Observation end date	2003-09-15T04:02:14	2003-09-15T04:19:35			
Read mode	TIMED	TIMED			

2.3 Aspect



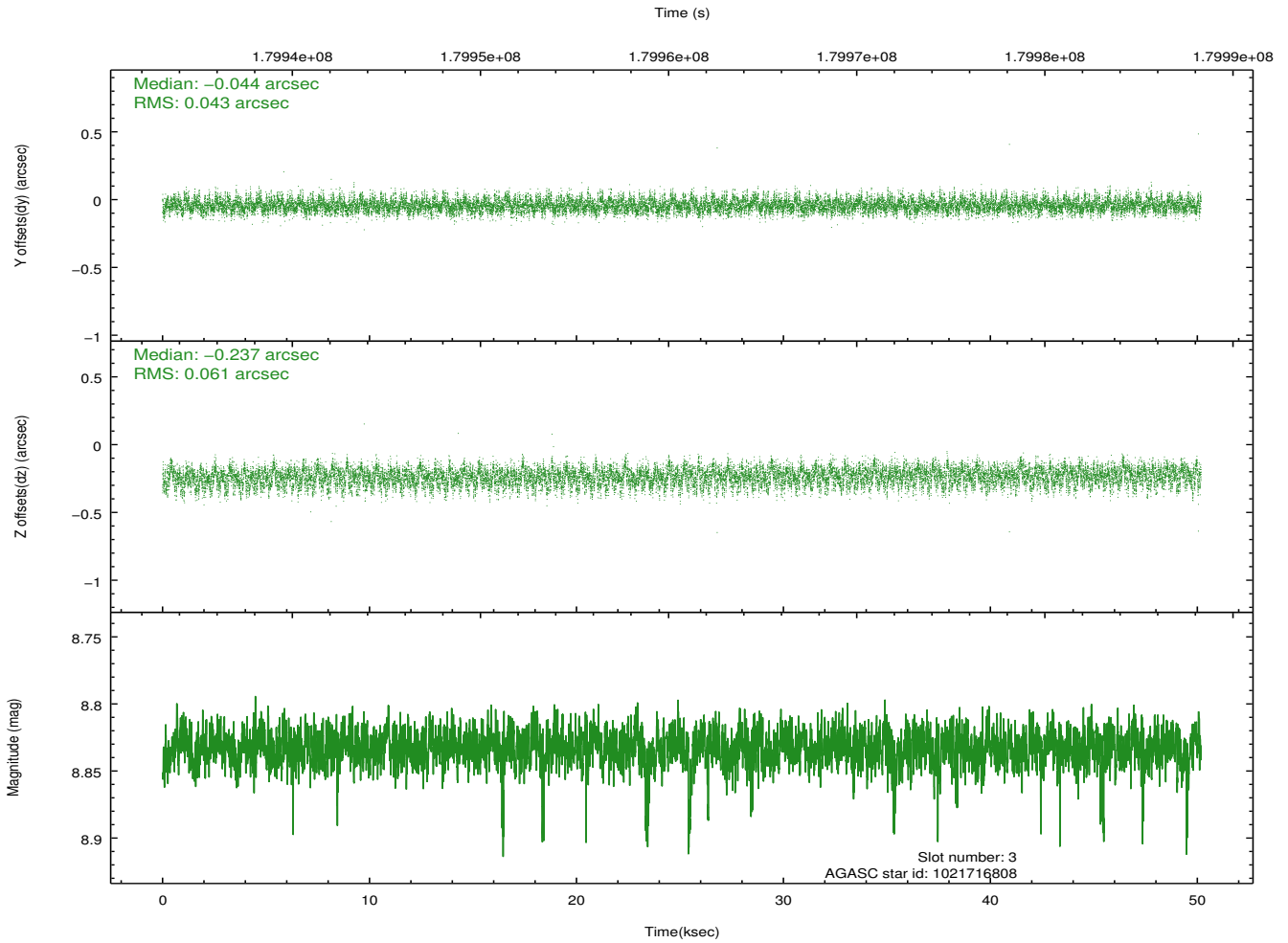
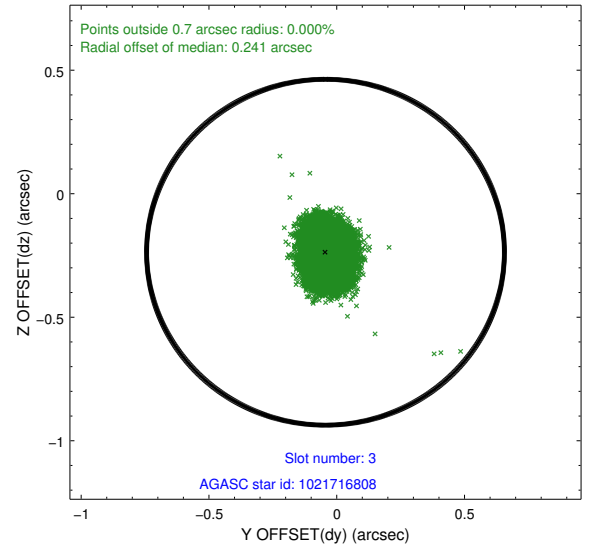
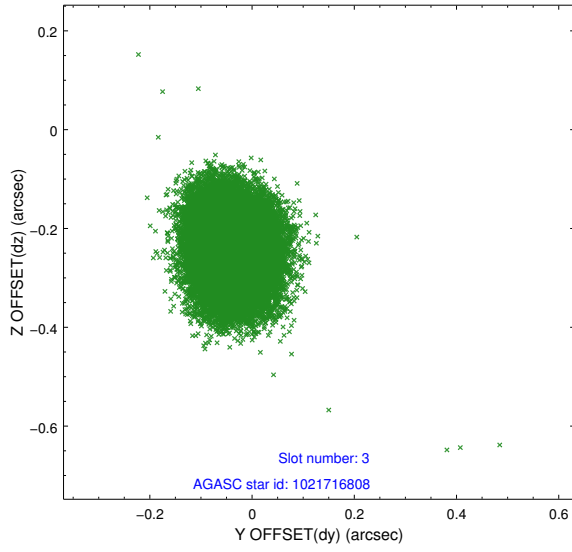


Slot Statistics

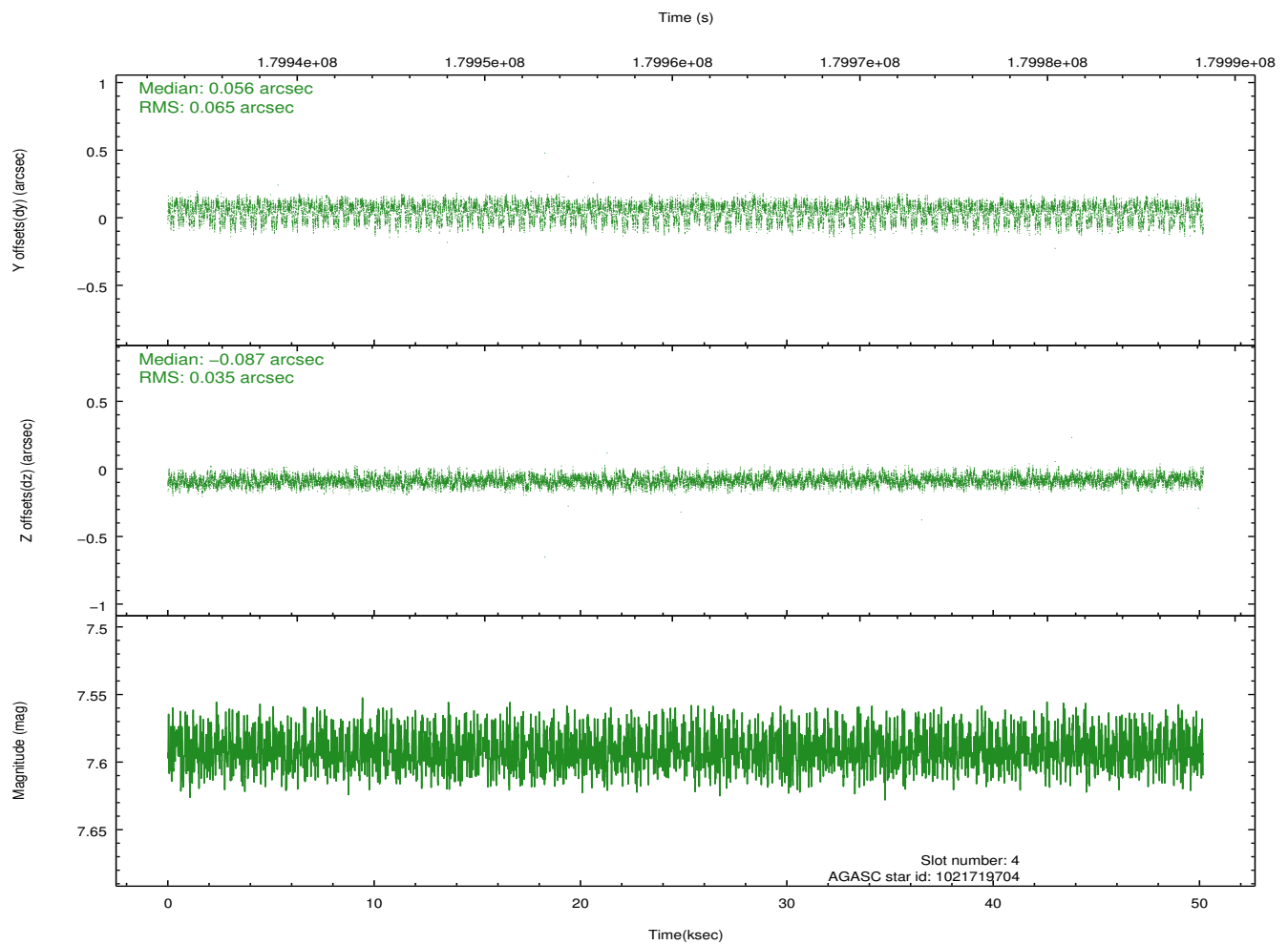
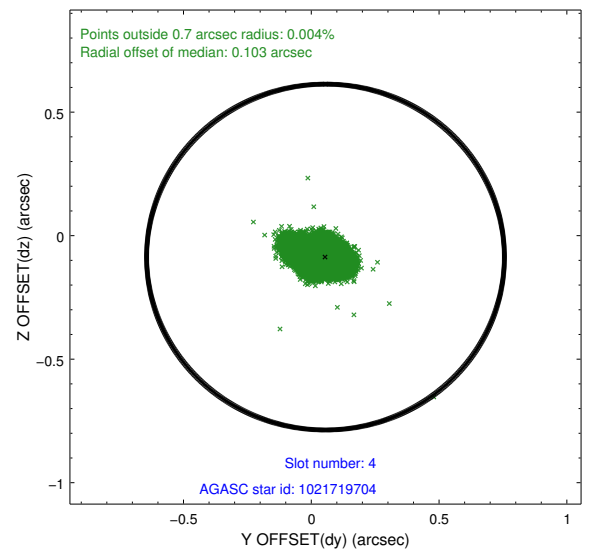
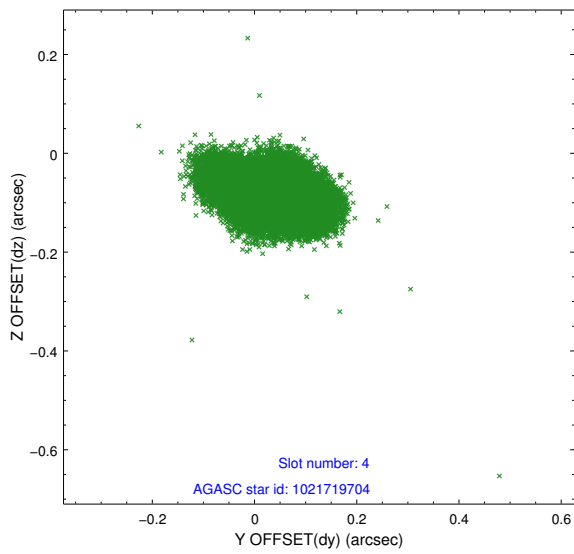
slot	status	id	mag	n_pts	med_dy	med_dz	dr1	dr2	ra	dec	mean_y	mean_z
0	FID	ACIS-S-1	7.18	12240	-0.004	-0.063	0.010	0.018	0.000000	0.000000	936.83	-1728.00
1	FID	ACIS-S-4	7.20	12239	0.034	0.050	0.008	0.016	0.000000	0.000000	2154.28	176.28
2	FID	ACIS-S-5	7.23	12239	-0.058	0.026	0.009	0.015	0.000000	0.000000	-1812.11	169.85
3	GUIDE	1021716808	8.83	24430	-0.044	-0.237	0.080	0.129	200.901189	-42.531395	-28.78	-2083.06
4	GUIDE	1021719704	7.59	24477	0.056	-0.087	0.078	0.131	200.511976	-43.050426	1919.09	-1214.36
5	GUIDE	1021721504	9.56	24455	0.052	-0.041	0.092	0.151	201.182768	-43.000443	404.83	-289.28
6	GUIDE	1021721672	9.55	24462	-0.141	-0.043	0.077	0.127	201.740358	-43.079729	-582.48	833.04
7	GUIDE	1022235840	9.45	24462	0.086	0.412	0.110	0.173	201.679306	-43.544276	569.65	2056.41

2.4 Star Slots

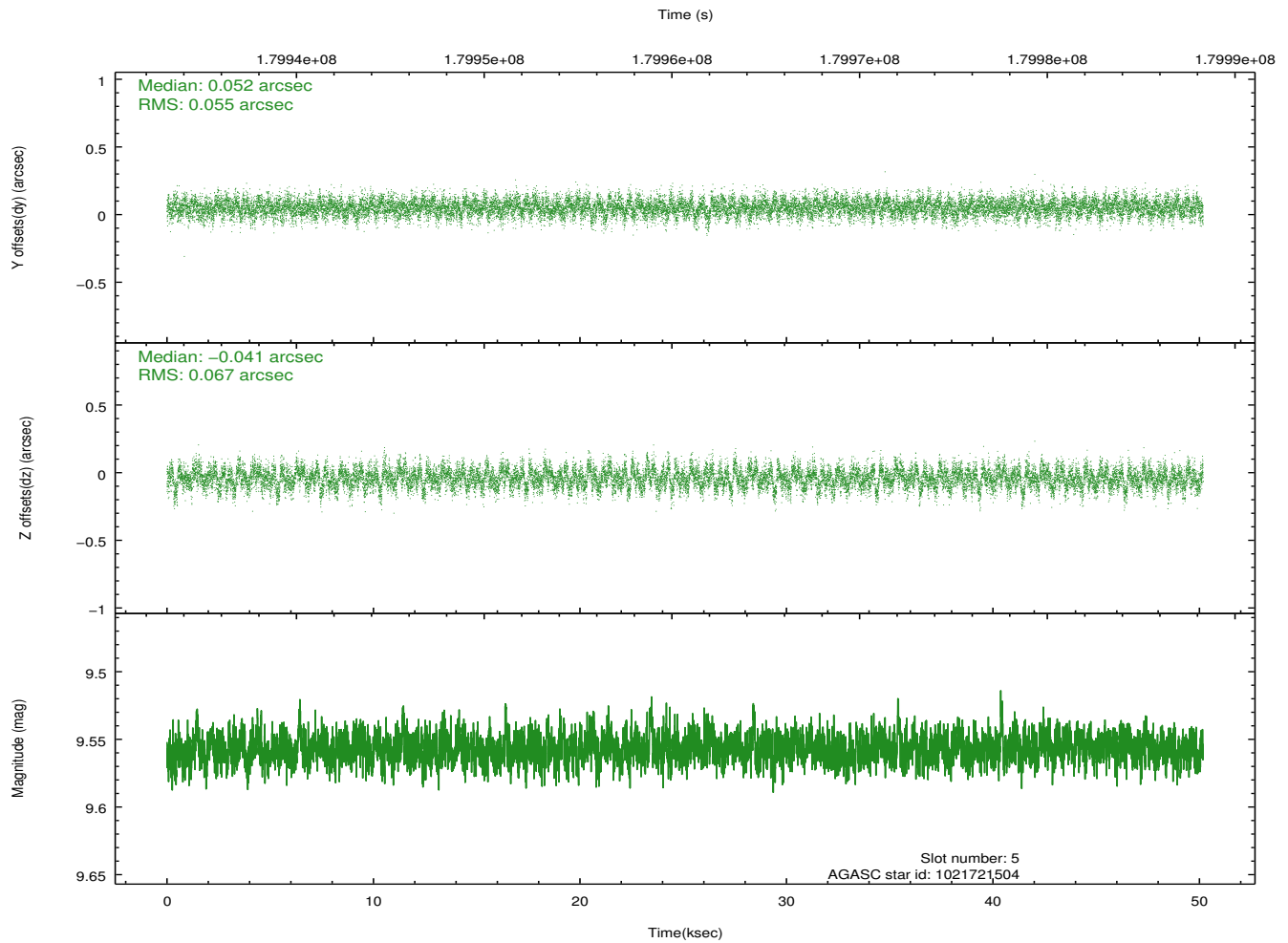
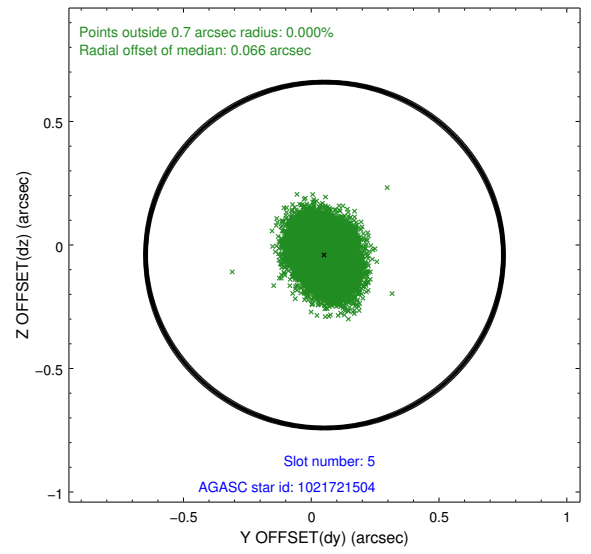
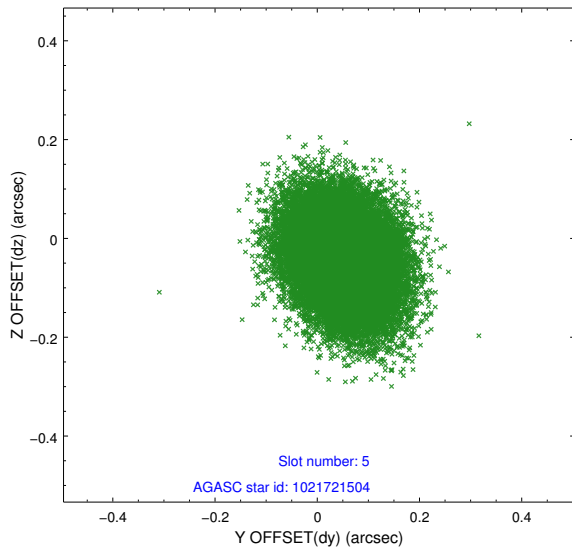
2.4.1 Slot 3



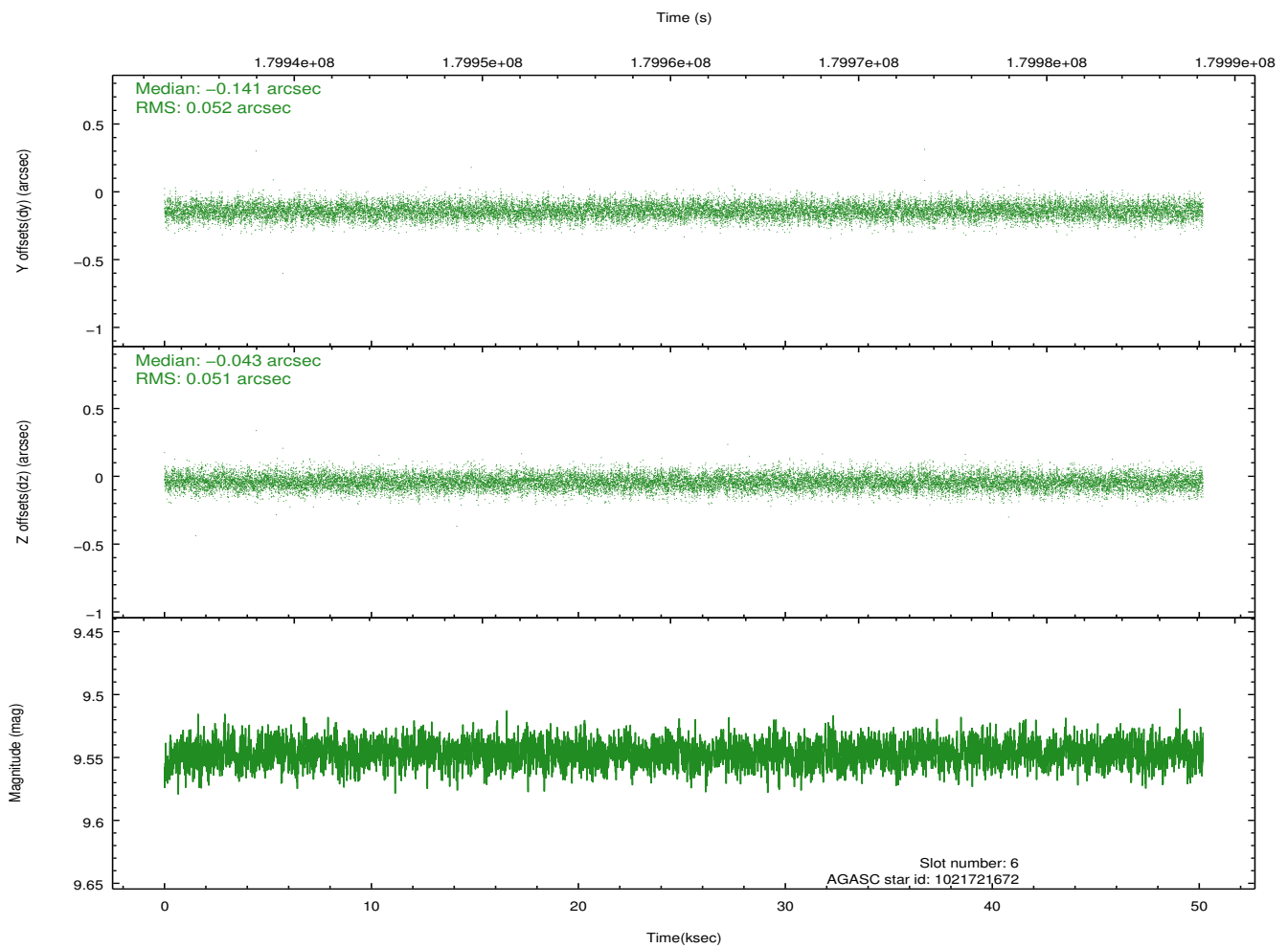
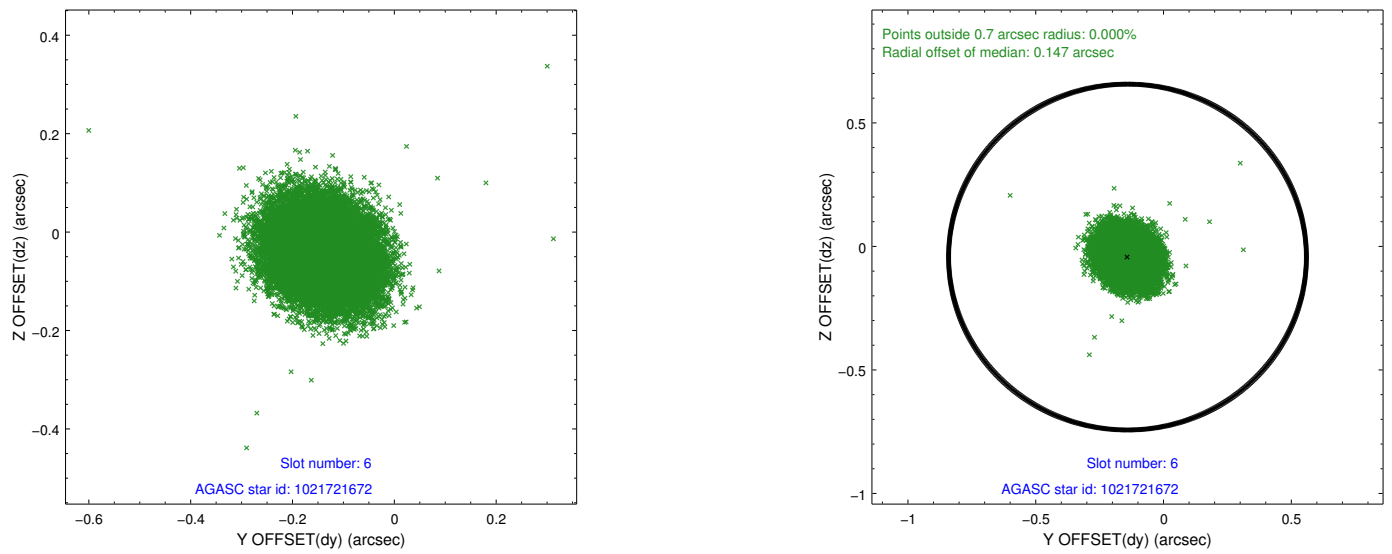
2.4.2 Slot 4



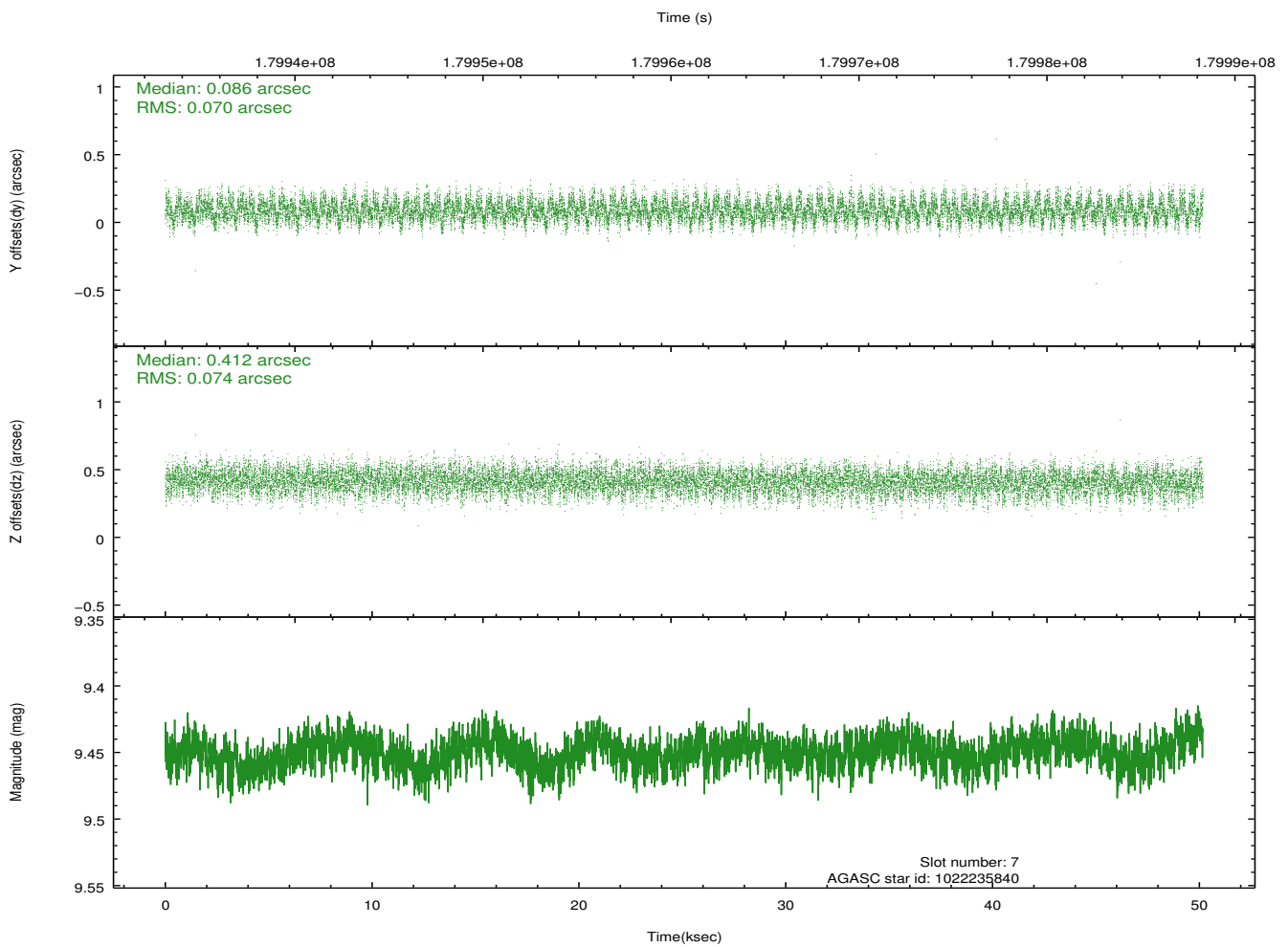
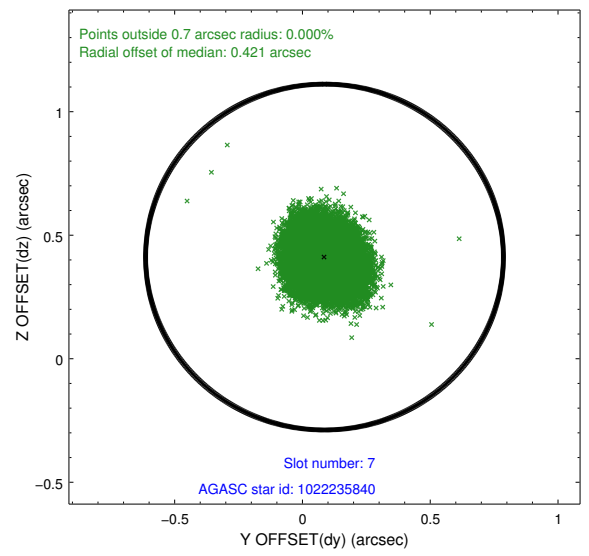
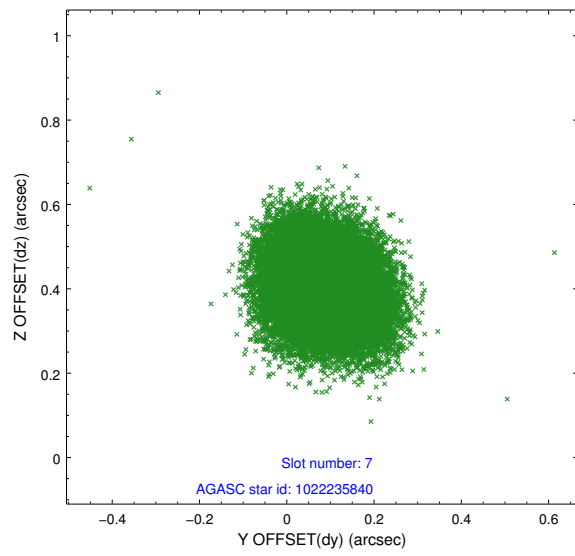
2.4.3 Slot 5



2.4.4 Slot 6

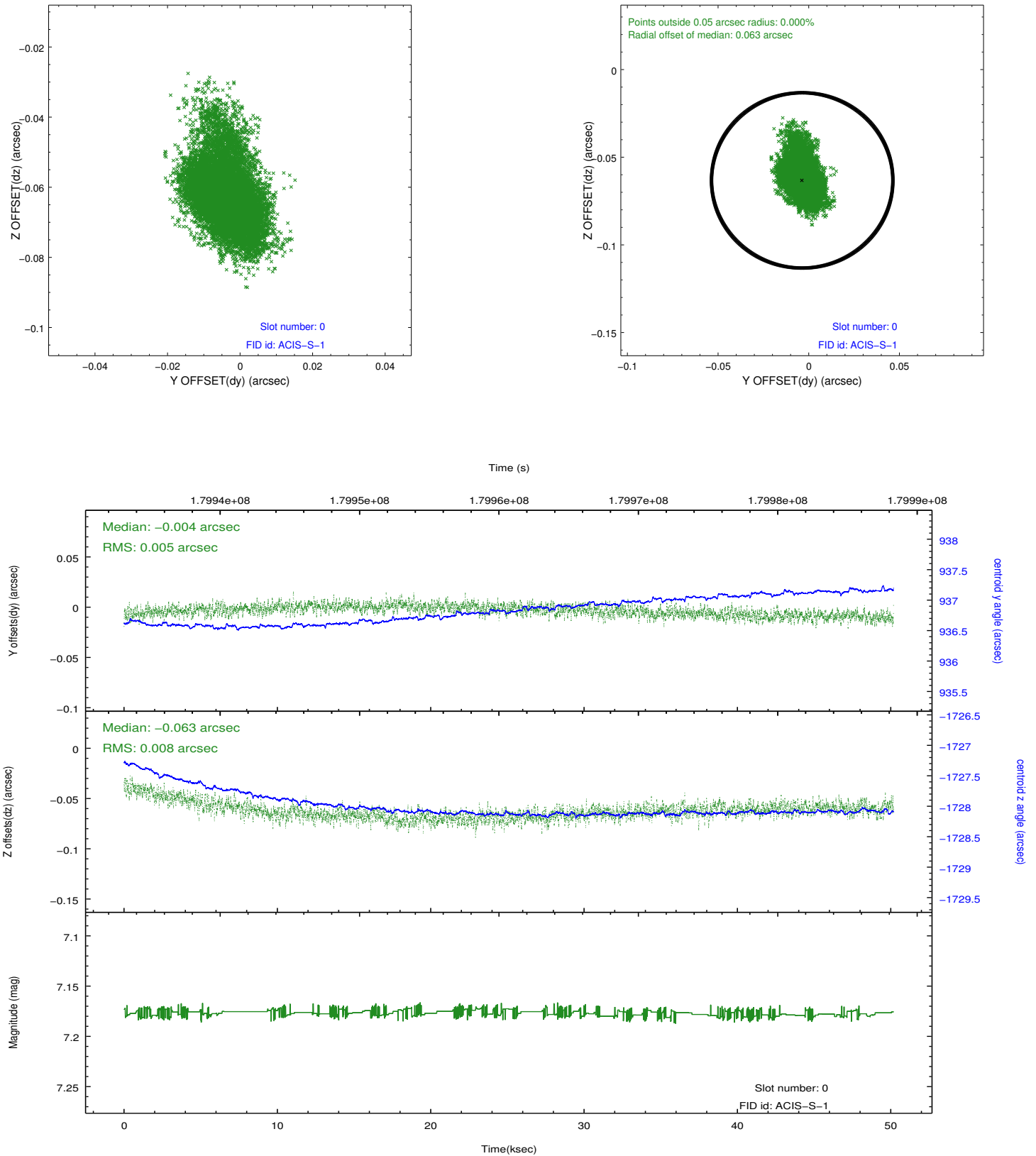


2.4.5 Slot 7

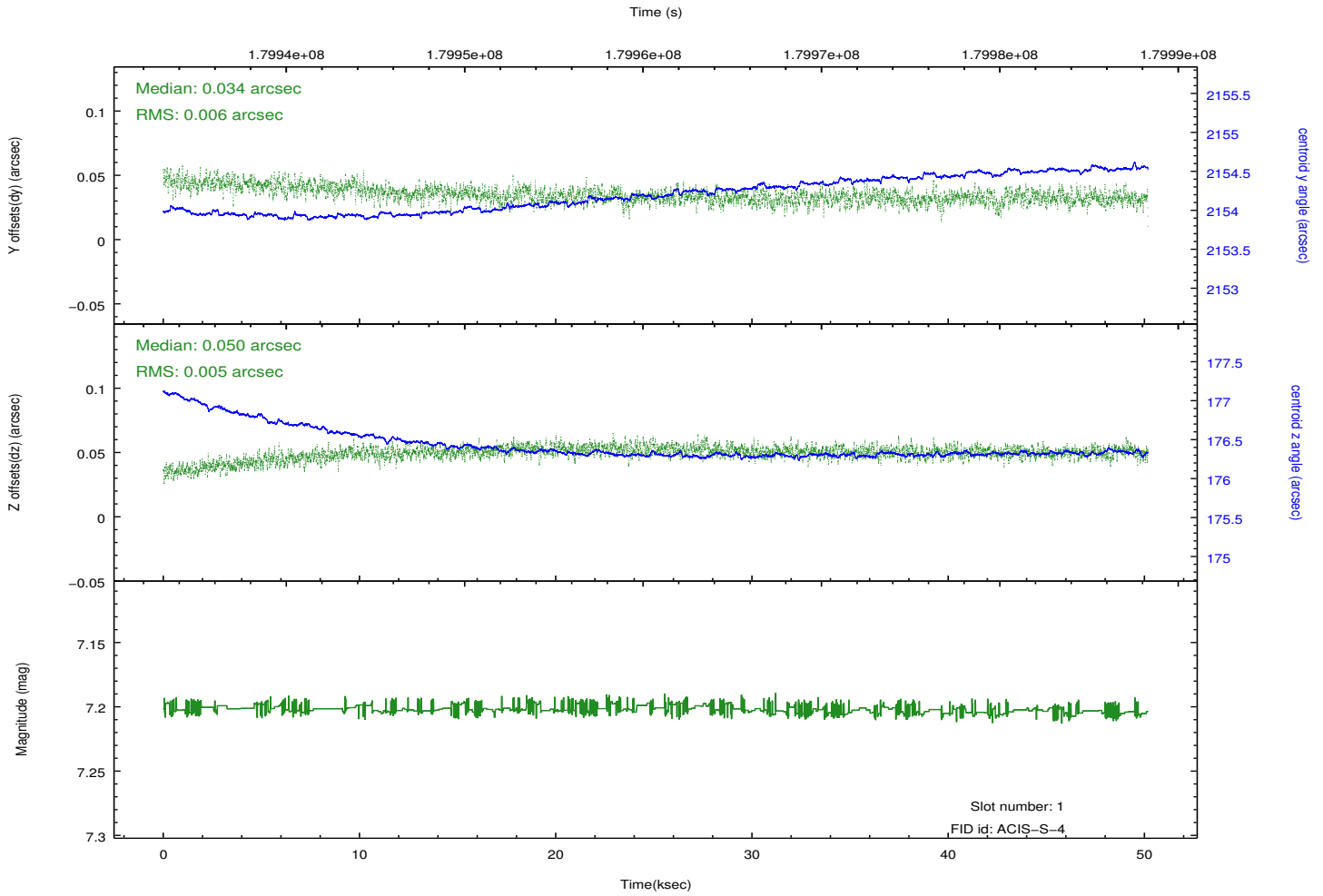
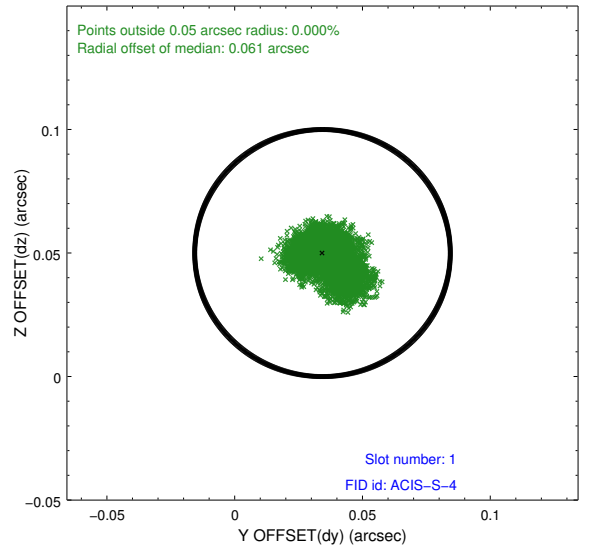
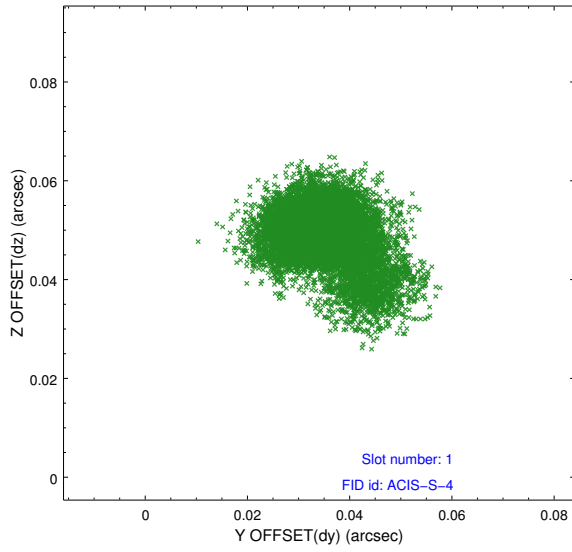


2.5 FID Slots

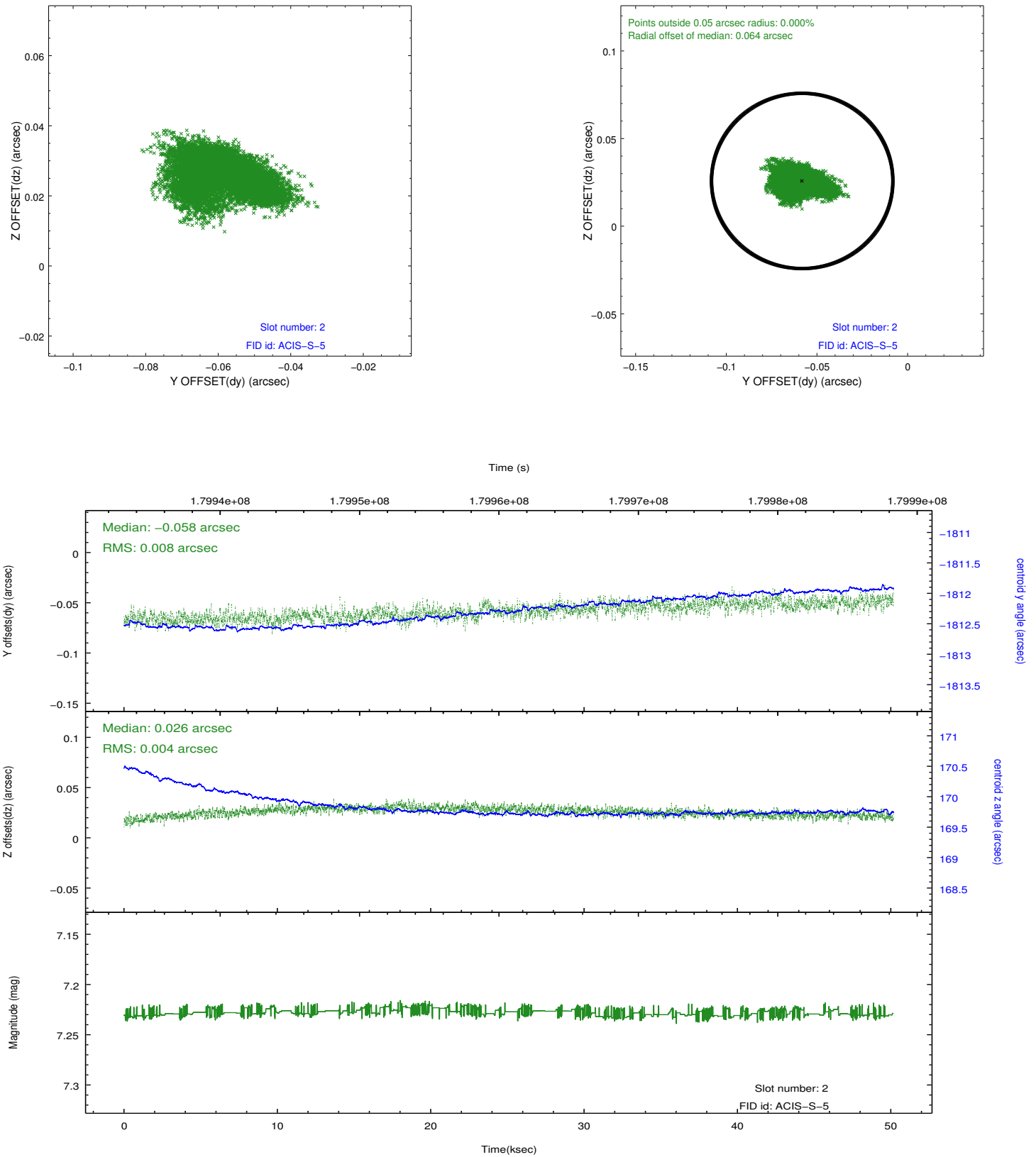
2.5.1 Slot 0



2.5.2 Slot 1



2.5.3 Slot 2



A Summary

A.1 Status

V&V Scientist	Jen Lauer
V&V Date (YYYY-MM-DD)	2012.11.29
V&V Edition	1
V&V Disposition and Status	OK
V&V Charge Time	50.173

A.2 Comments

Roll constraint satisfied.