

V&V Reference Report

L2 ASCDS Version : 8.4.5

Observation 4075 - L2 Version 3
Chandra X-Ray Center

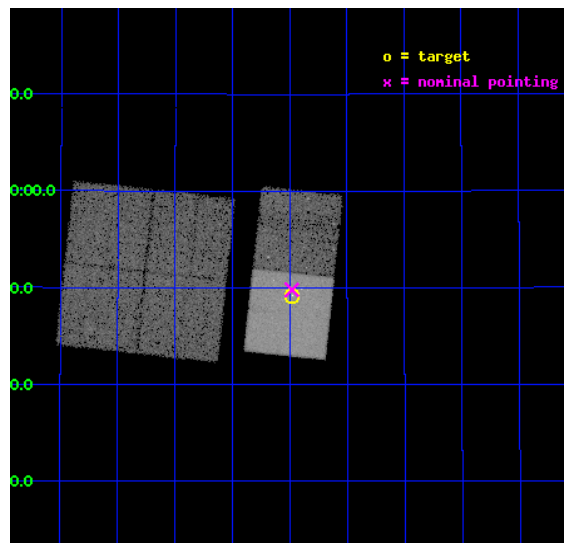
L2 Processing Date : Nov 1 2012

Contents

1	Front	2
2	OBI	3
2.1	OBI	3
2.1.1	Images	3
2.1.2	Bias	3
2.1.3	Parameters	4
2.1.4	Events	4
2.2	Compared Parameters	5
2.3	Aspect	6
2.4	Star Slots	9
2.4.1	Slot 3	9
2.4.2	Slot 4	10
2.4.3	Slot 5	11
2.4.4	Slot 6	12
2.4.5	Slot 7	13
2.5	FID Slots	14
2.5.1	Slot 0	14
2.5.2	Slot 1	15
2.5.3	Slot 2	16
A	Summary	17
A.1	Status	17
A.2	Comments	17

1 Front

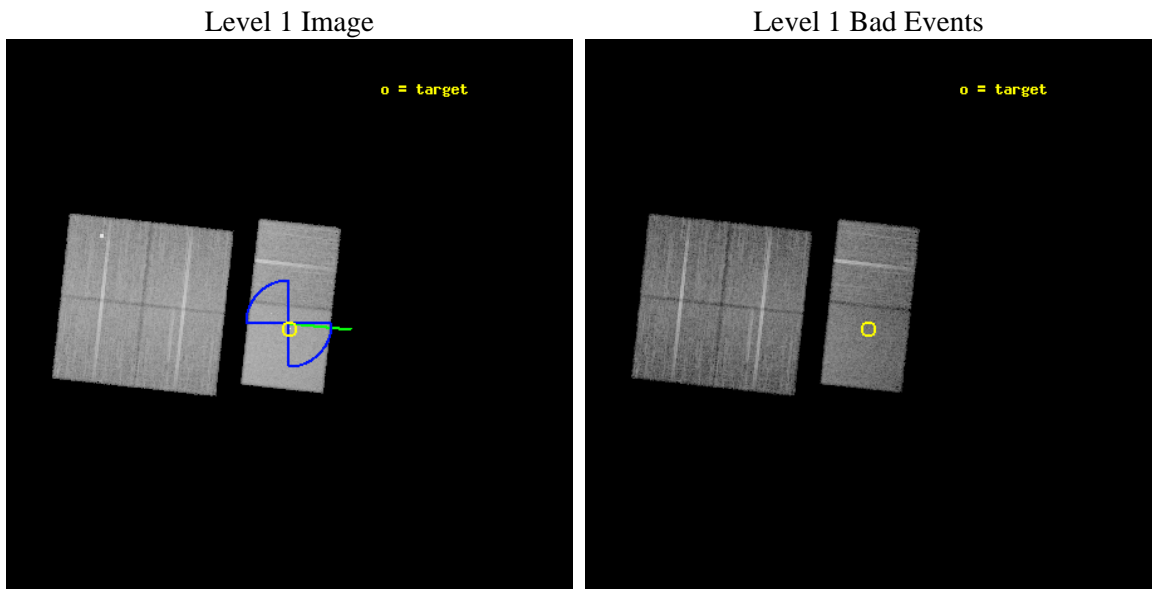
seq_num	700754	Sequence number
obs_id	4075	Observation id
title	PROBING THE STRUCTURE OF THE NARROW-LINE REGION IN SEYFERT GALAXIES WITH CXO IMAGING SPECTROSCOPY	Proposal title
observer	Dr. Steven Kraemer	Principal investigator
object	MRK 1066	Source name
dtcycle	0	
cycle	P	events from which exps? Prim/Second/Both
ra_targ	44.994583	Observer's specified target RA [deg]
dec_targ	36.820306	Observer's specified target Dec [deg]
ra_nom	44.995365684585	Nominal RA [deg]
dec_nom	36.829976107101	Nominal Dec [deg]
roll_nom	96.250665769371	Nominal Roll [deg]
revision	3	Processing version of data
ontime	20121.599925041	Sum of GTIs [s]
livetime	19866.808111017	Livetime [s]
ontime0	20121.599925041	Sum of GTIs [s]
ontime1	20121.599925041	Sum of GTIs [s]
ontime2	20121.599925041	Sum of GTIs [s]
ontime3	20121.599925041	Sum of GTIs [s]
ontime6	20121.599925041	Sum of GTIs [s]
ontime7	20121.599925041	Sum of GTIs [s]
l2events	137500	Number of level 2 events



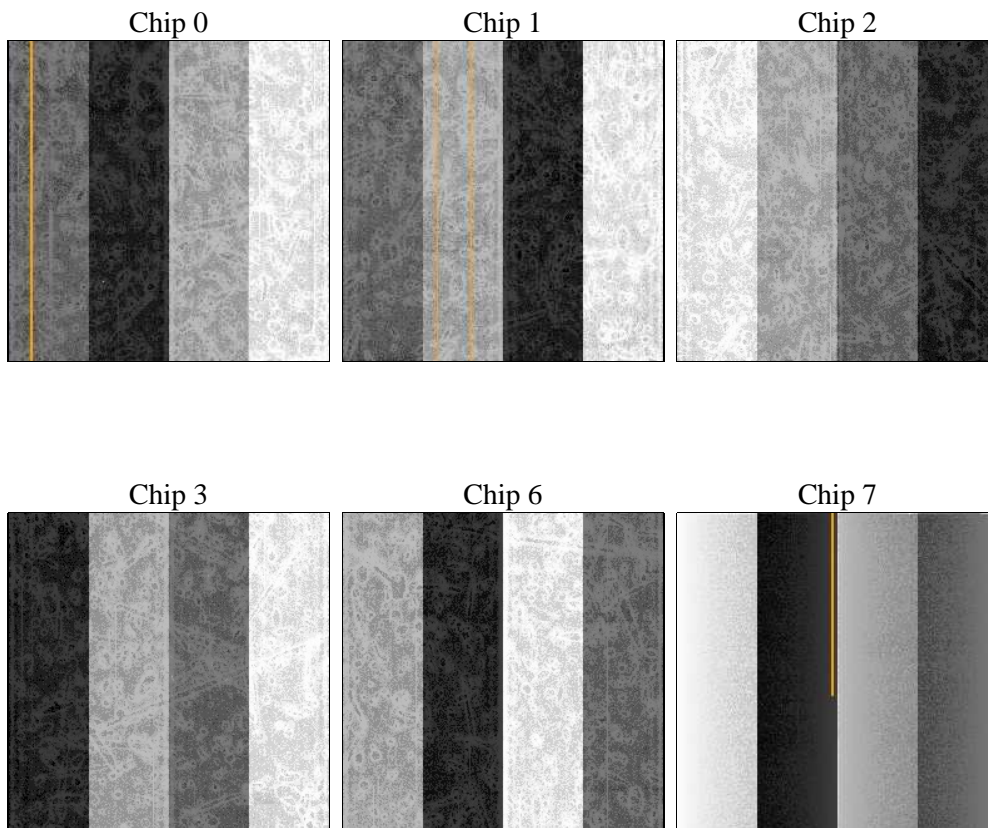
2 OBI

2.1 OBI

2.1.1 Images



2.1.2 Bias



2.1.3 Parameters

obi_num	0	Obi number	sched_exp_time	20000.000000	[s] Scheduled observation exposure time
ascdsver	8.4.5	Processing system revision	ontime	20121.599925041	Sum of GTIs [s]
caldbver	4.5.2	 	ontime0	20121.599925041	Sum of GTIs [s]
date	2012-11-01T03:58:27	Date and time of file creation	ontime1	20121.599925041	Sum of GTIs [s]
revision	3	Processing version of data	ontime2	20121.599925041	Sum of GTIs [s]
			ontime3	20121.599925041	Sum of GTIs [s]
			ontime6	20121.599925041	Sum of GTIs [s]
			ontime7	20121.599925041	Sum of GTIs [s]
			l1events	763741	Number of level 1 events

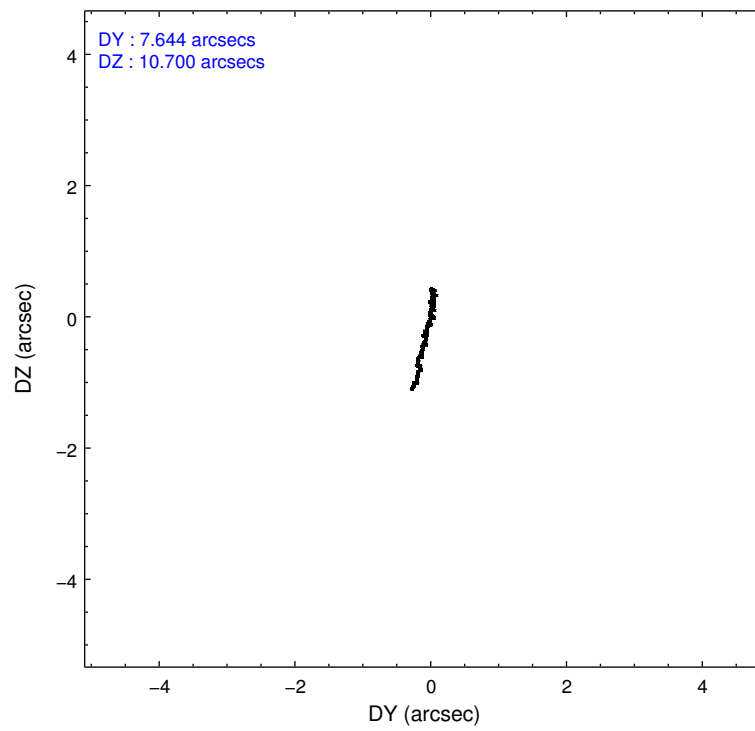
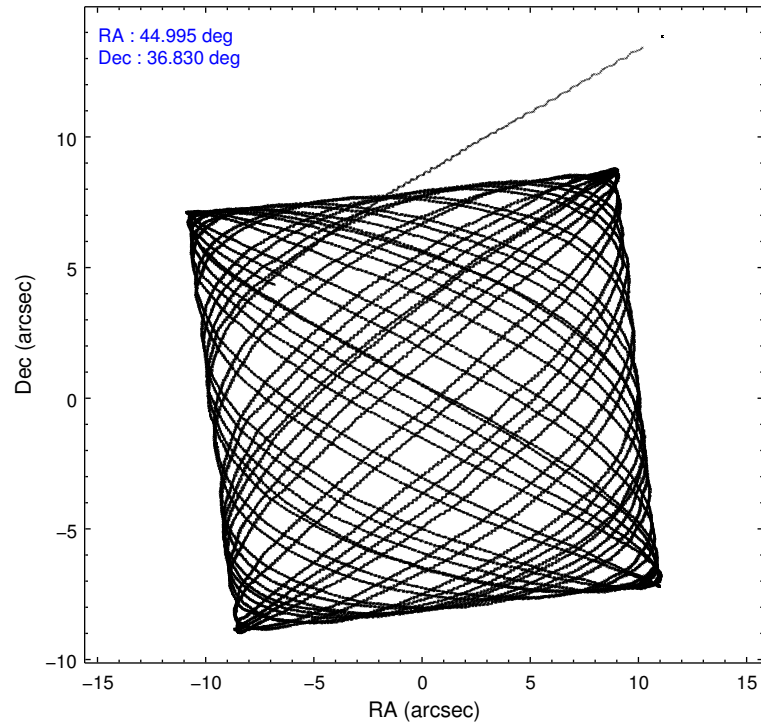
2.1.4 Events

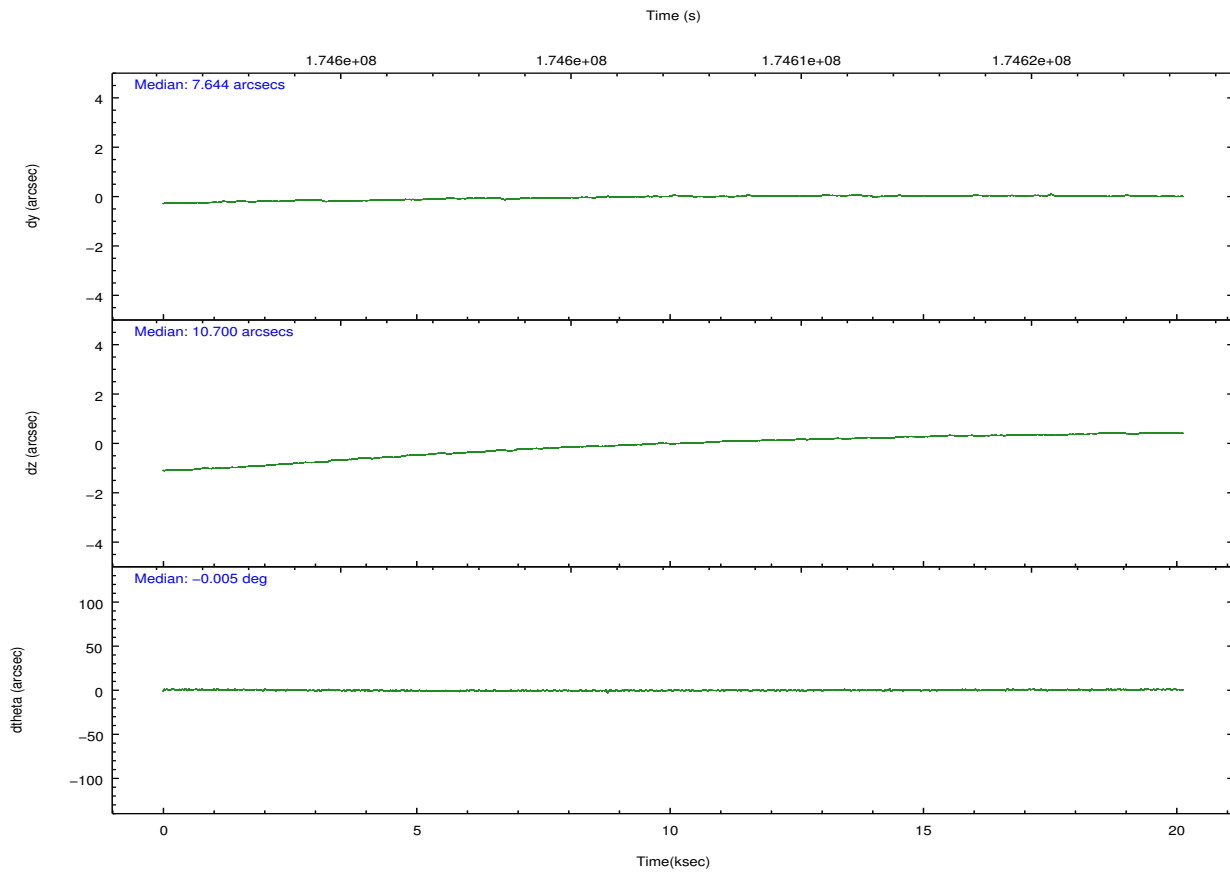
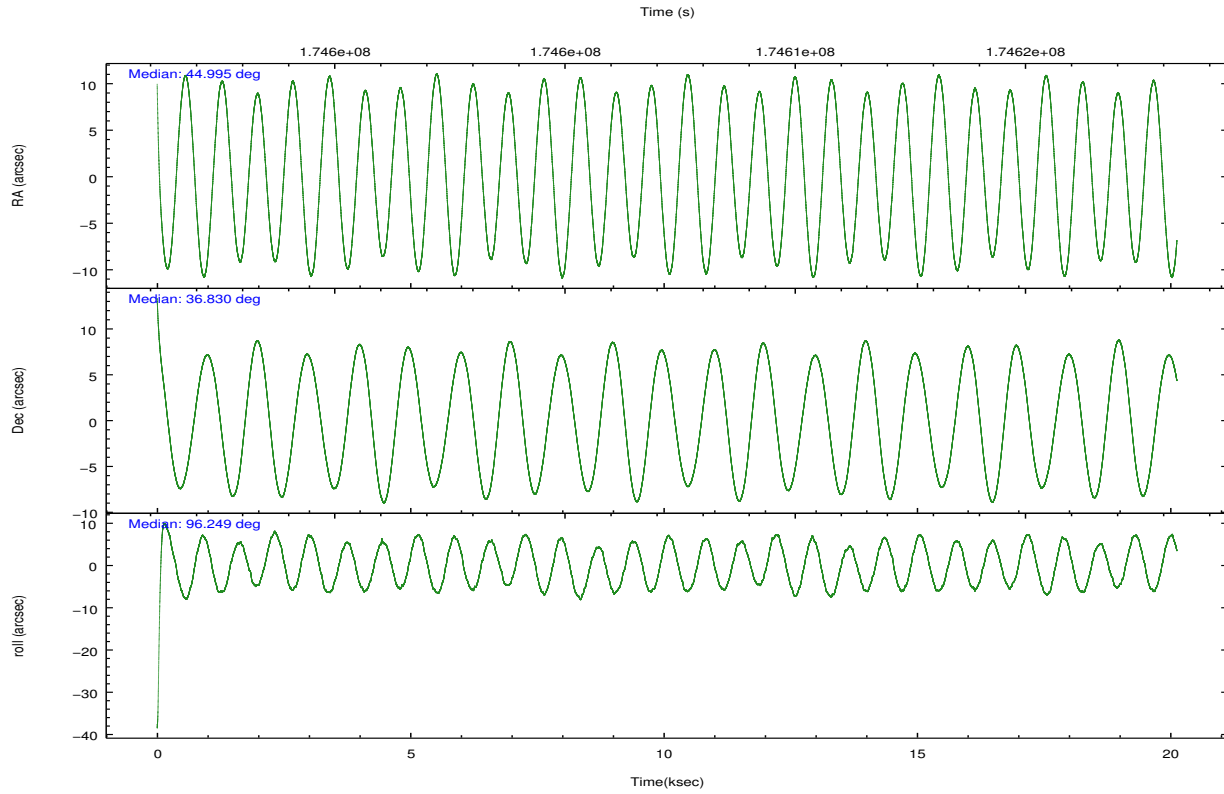
	ccd 0	ccd 1	ccd 2	ccd 3	ccd 6	ccd 7		ccd 0	ccd 1	ccd 2	ccd 3	ccd 6	ccd 7
level 1 events	121417	110950	118570	116742	125012	171050	grade 0 events	6297	6136	6620	6280	6245	7692
rejected events	103011	95661	104186	102534	110048	95617		5%	5%	5%	5%	4%	4%
rejected %	84%	86%	87%	87%	88%	55%	grade 1 events	52	51	65	79	64	158
								0%	0%	0%	0%	0%	0%
							grade 2 events	3204	3267	2881	2679	3121	14978
								2%	2%	2%	2%	2%	8%
							grade 3 events	1504	1543	1390	1404	1312	6662
								1%	1%	1%	1%	1%	3%
							grade 4 events	4896	1528	1306	1489	1341	6536
								4%	1%	1%	1%	1%	3%
							grade 5 events	5066	4865	4581	5260	5425	15410
								4%	4%	3%	4%	4%	9%
							grade 6 events	2630	2960	2295	2446	3060	40128
								2%	2%	1%	2%	2%	23%
							grade 7 events	97768	90600	99432	97105	104444	79486
								80%	81%	83%	83%	83%	46%

2.2 Compared Parameters

Parameter	Planned	Actual	Parameter	Planned	Actual
Instrument	ACIS	ACIS	Obspar format version number	7	7
Detector	ACIS-012367	ACIS-012367	Obspar file type	PREDICTED	ACTUAL
Grating	NONE	NONE	Obspar update status	NONE	UPDATED
Data mode	FAINT	FAINT	Number of optional ACIS chips dropped	0	0
Observation mode	POINTING	POINTING	On-chip summing requested	N	N
[deg] Pointing RA	45.015877	44.99536568458507	Subarray requested	NONE	NONE
[deg] Pointing Dec	36.808209	36.82997610710061	Alternating exposures requested	N	N
[deg] Pointing Roll	96.081774	96.25066576937085	[s] Primary exposure time	0.000000	3.2
[deg] Roll angle	135.000000	135.000000			
[deg] Roll tolerance	45.000000	45.000000			
Roll constraint allows 180D rotation	Y	Y			
[mm] SIM focus pos	-0.684267	-0.6828225247311905			
[mm] SIM defocus	0	0.001444936568705701			
[mm] SIM translation stage pos	-190.132523	-190.1400660498719			
[mm] SIM translation stage offset	0	0.00754346686406393			
[s] Observation start time (MET)	174597272.184000	174596157.21509			
Observation start date	2003-07-14T19:13:28	2003-07-14T18:55:57			
[s] Observation end time (MET)	174617272.184000	174618205.99103			
Observation end date	2003-07-15T00:46:48	2003-07-15T01:03:25			
Read mode	TIMED	TIMED			

2.3 Aspect



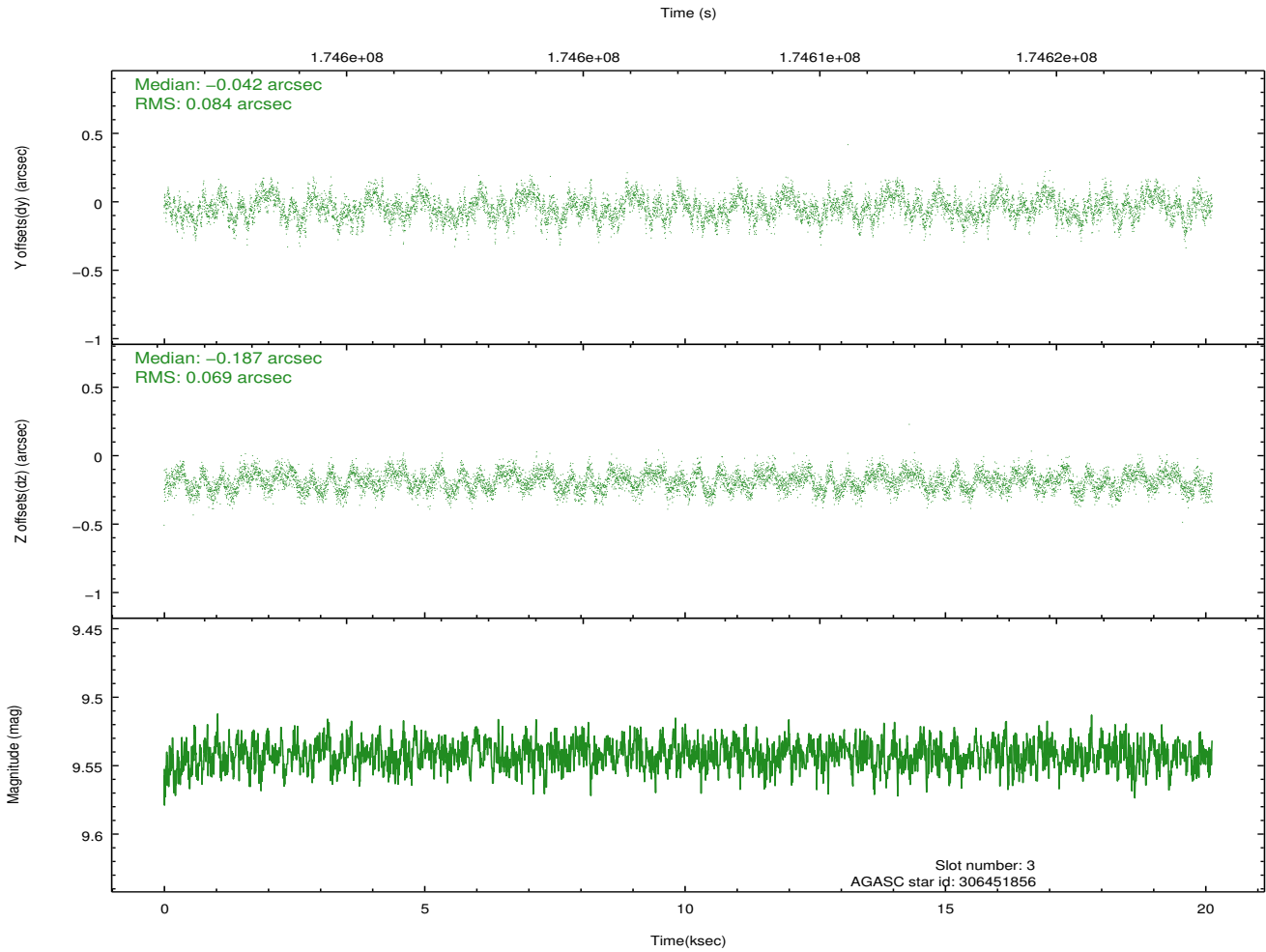
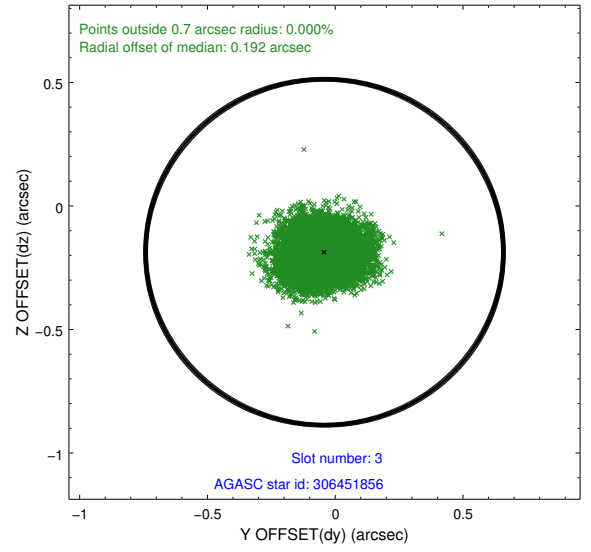
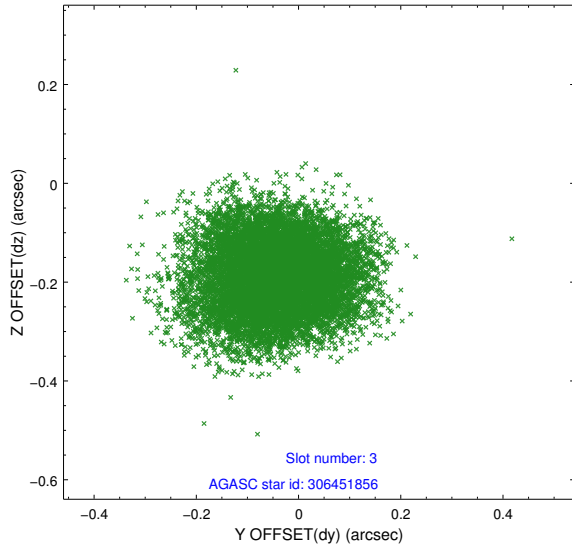


Slot Statistics

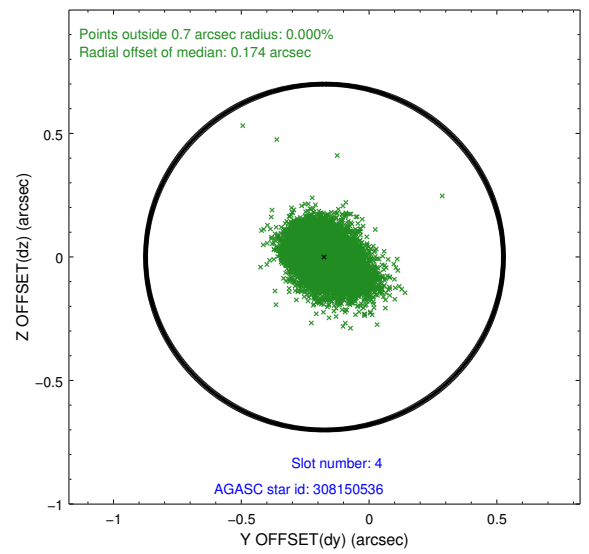
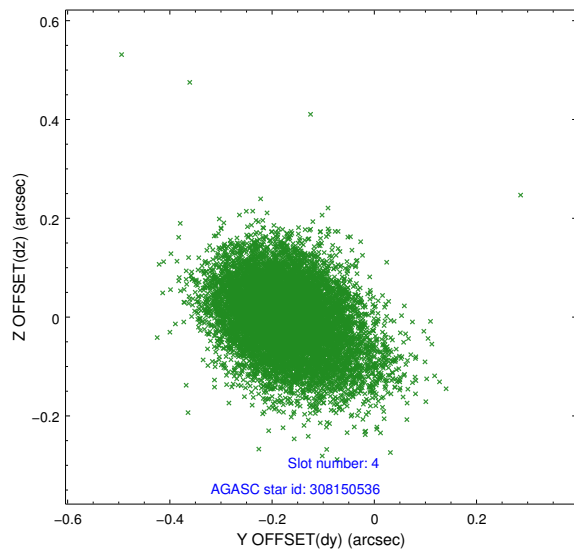
slot	status	id	mag	n_pts	med_dy	med_dz	dr1	dr2	ra	dec	mean_y	mean_z
0	FID	ACIS-S-2	7.10	4909	-0.039	-0.014	0.010	0.017	0.000000	0.000000	-760.36	-1731.87
1	FID	ACIS-S-4	7.20	4909	0.076	0.023	0.007	0.012	0.000000	0.000000	2152.90	176.53
2	FID	ACIS-S-5	7.23	4910	-0.068	0.001	0.008	0.013	0.000000	0.000000	-1813.04	170.30
3	GUIDE	306451856	9.54	9816	-0.042	-0.187	0.117	0.185	44.377223	37.306027	1982.09	1628.10
4	GUIDE	308150536	9.38	9813	-0.174	-0.001	0.107	0.181	45.286807	37.442091	2188.56	-1011.61
5	GUIDE	308150584	8.99	9814	-0.105	0.115	0.074	0.120	45.004794	37.427416	2220.39	-204.46
6	GUIDE	308151808	9.54	9813	0.289	0.034	0.099	0.163	45.425869	36.375999	-1669.74	-1017.04
7	GUIDE	308152544	7.78	9818	0.030	0.045	0.066	0.103	45.898515	36.442005	-1570.09	-2403.92

2.4 Star Slots

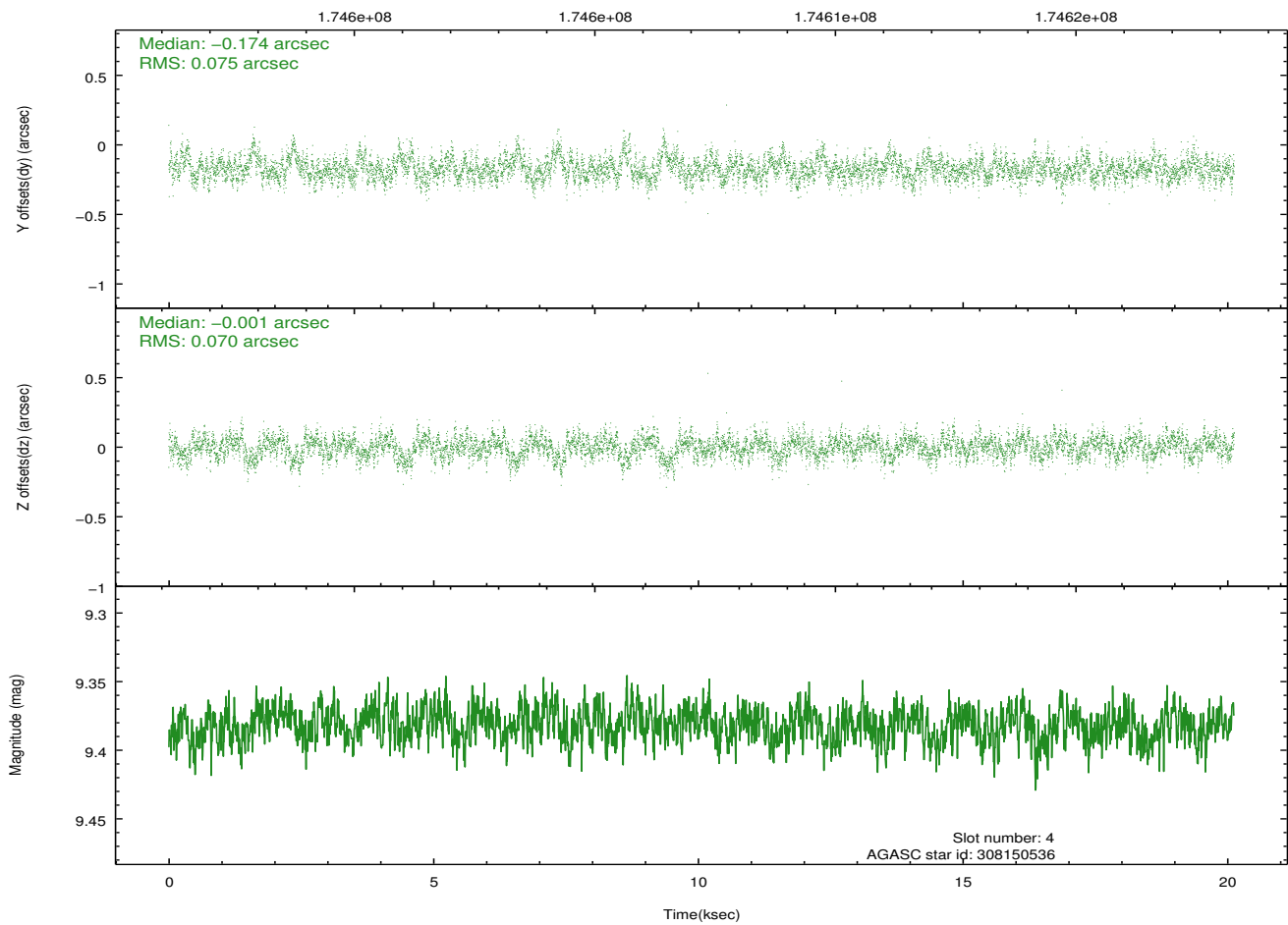
2.4.1 Slot 3



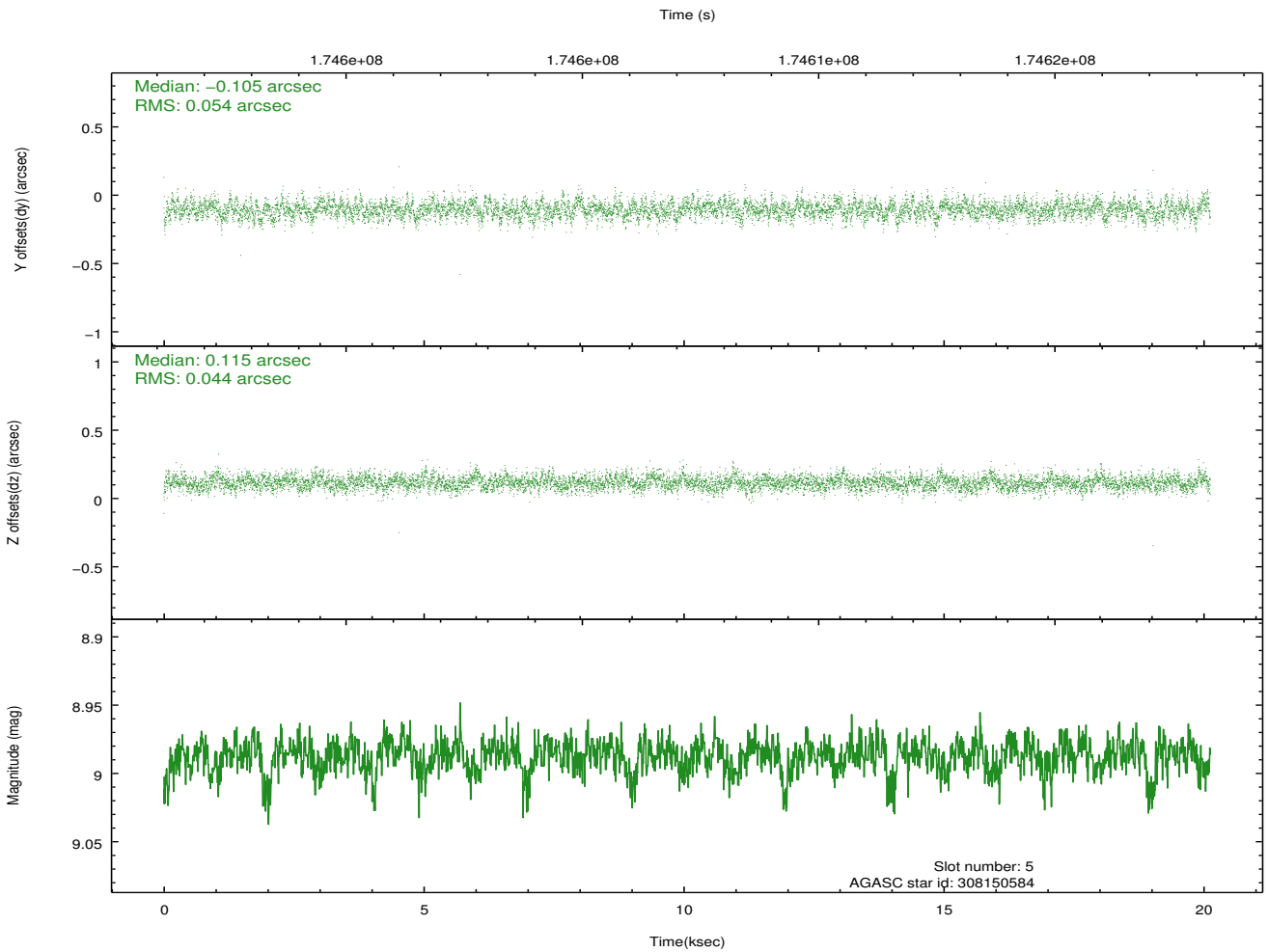
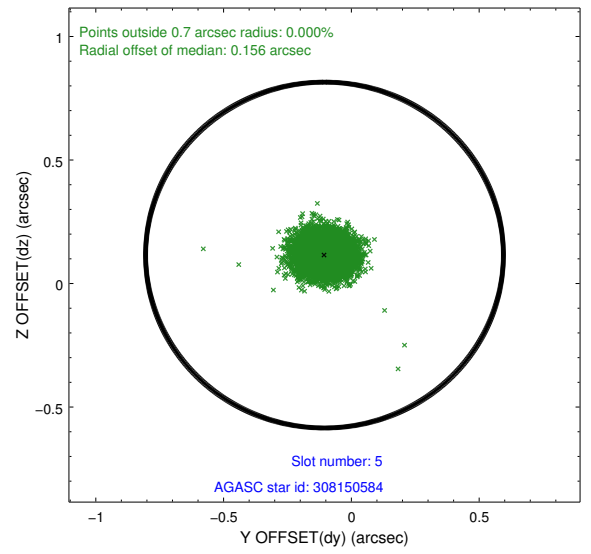
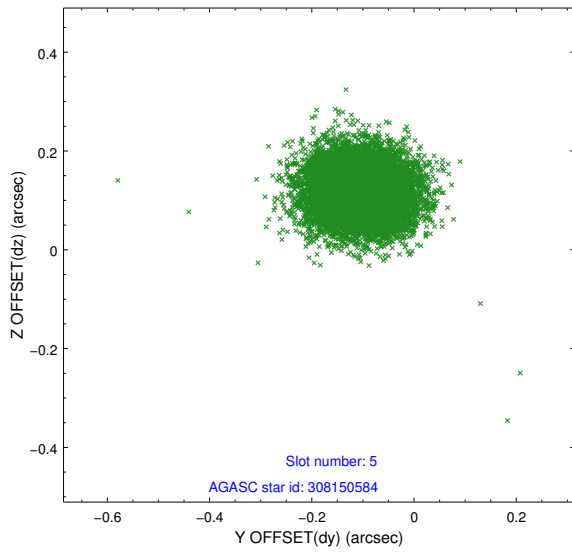
2.4.2 Slot 4



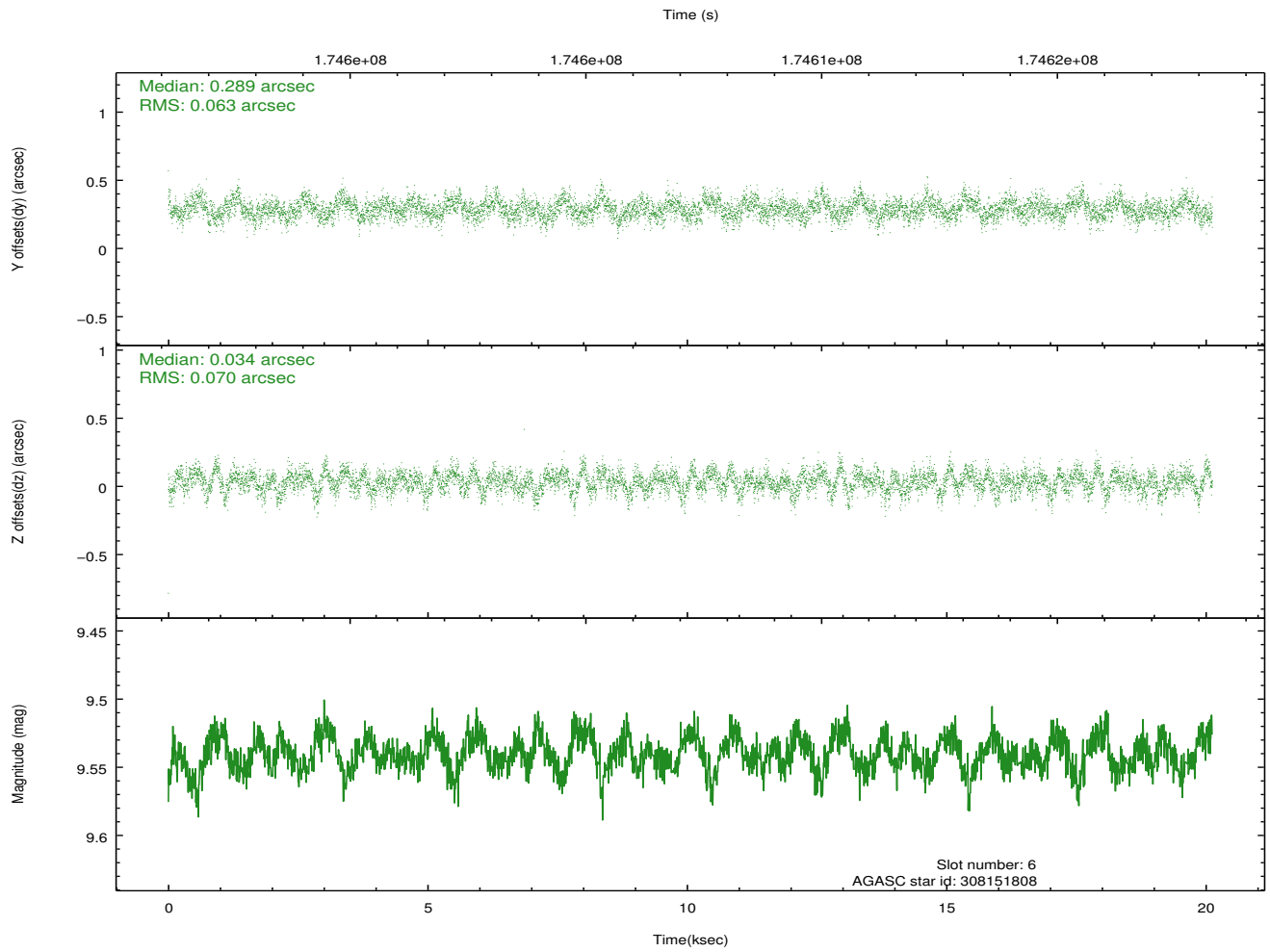
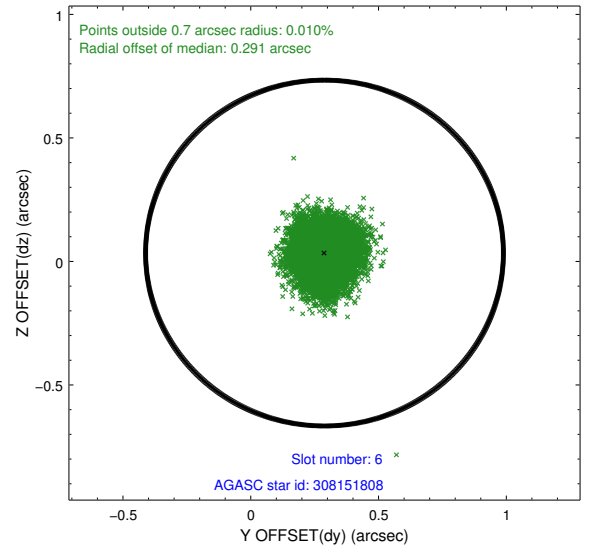
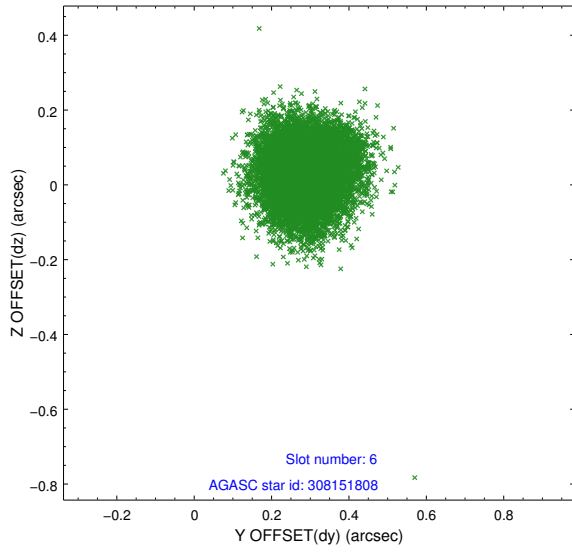
Time (s)



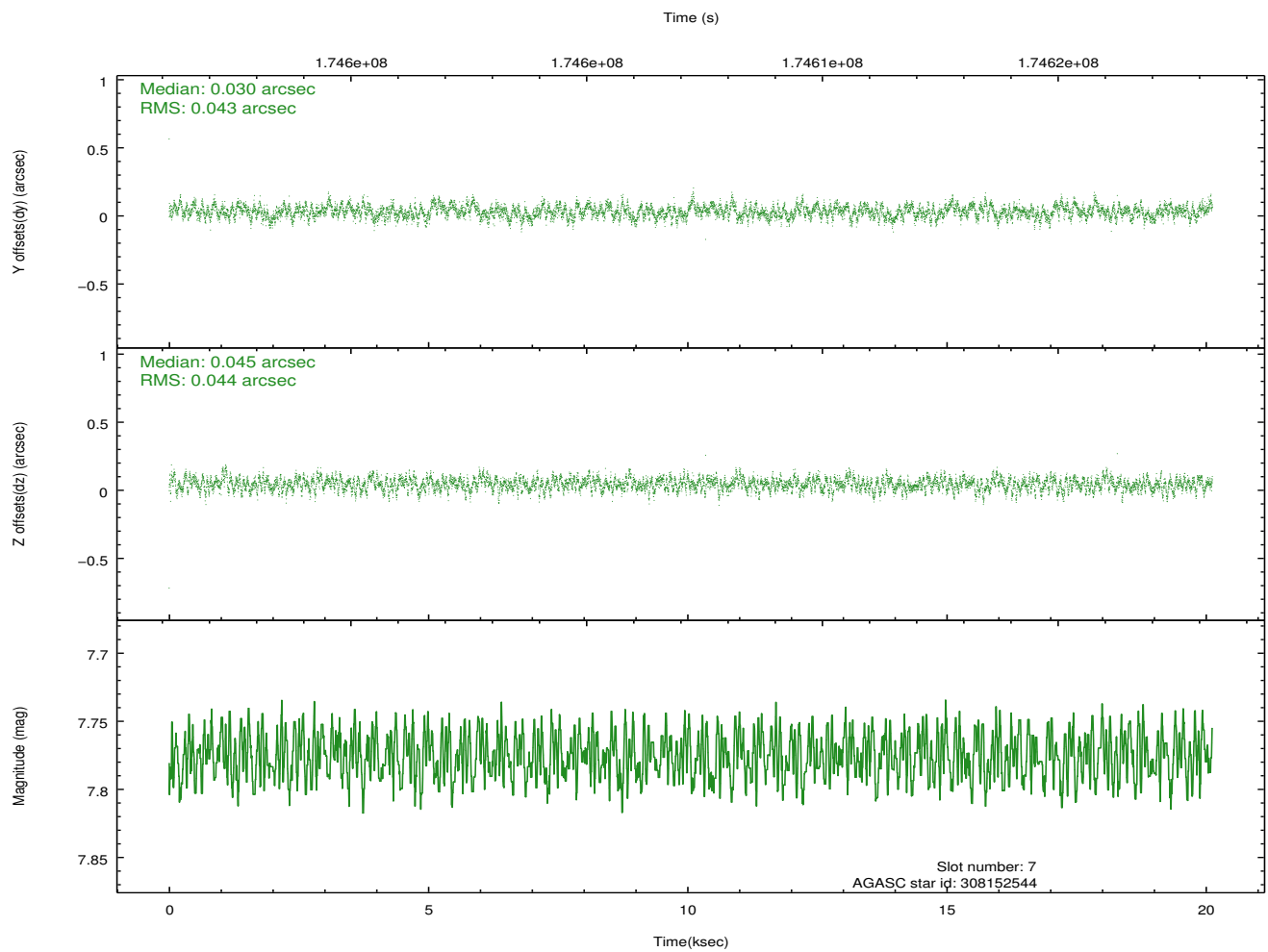
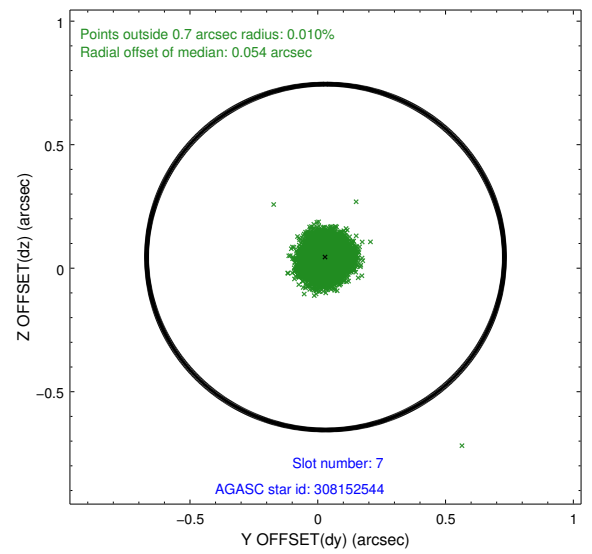
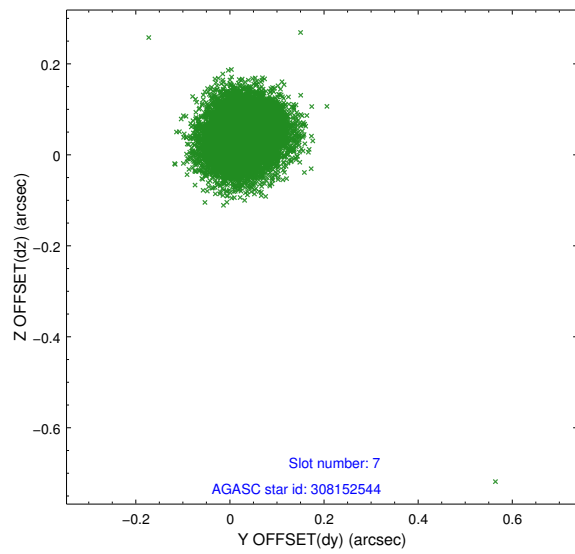
2.4.3 Slot 5



2.4.4 Slot 6

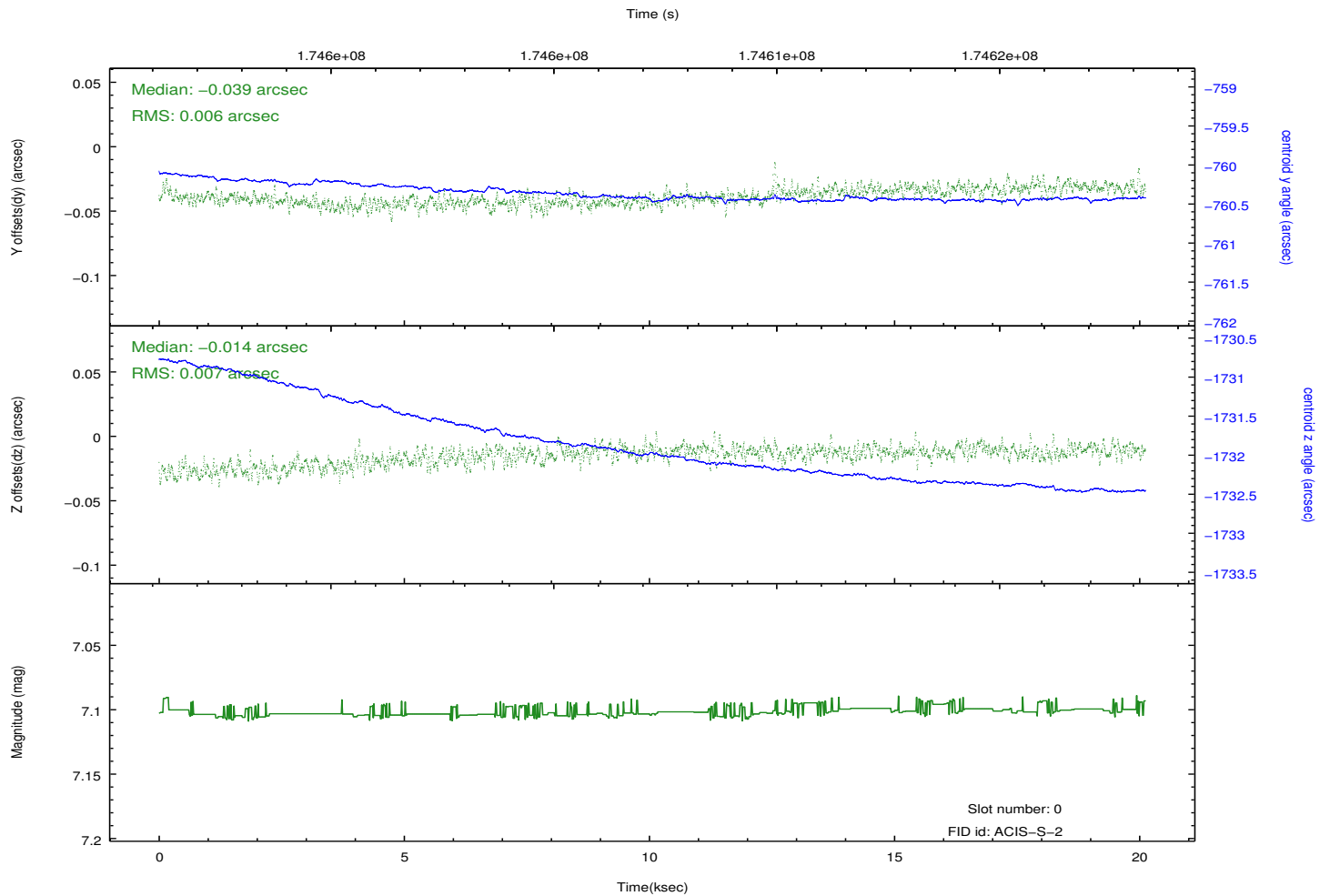
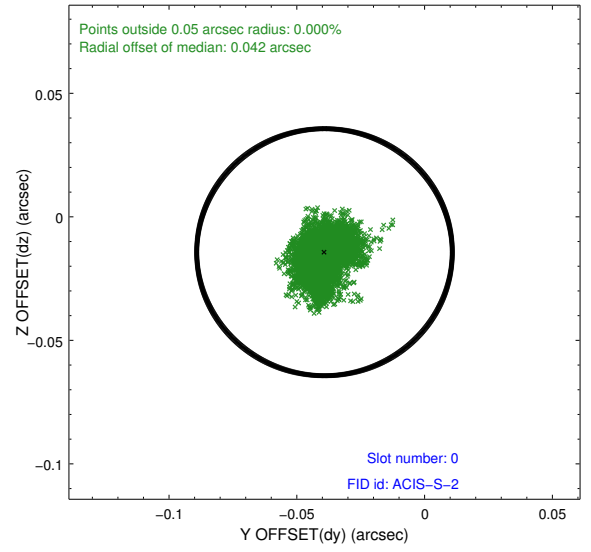
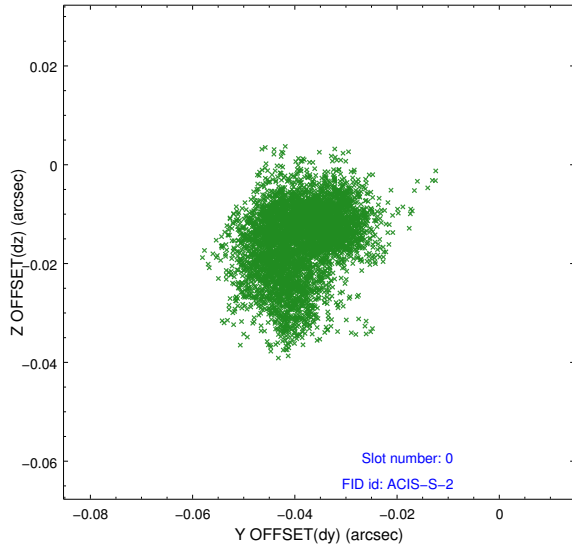


2.4.5 Slot 7

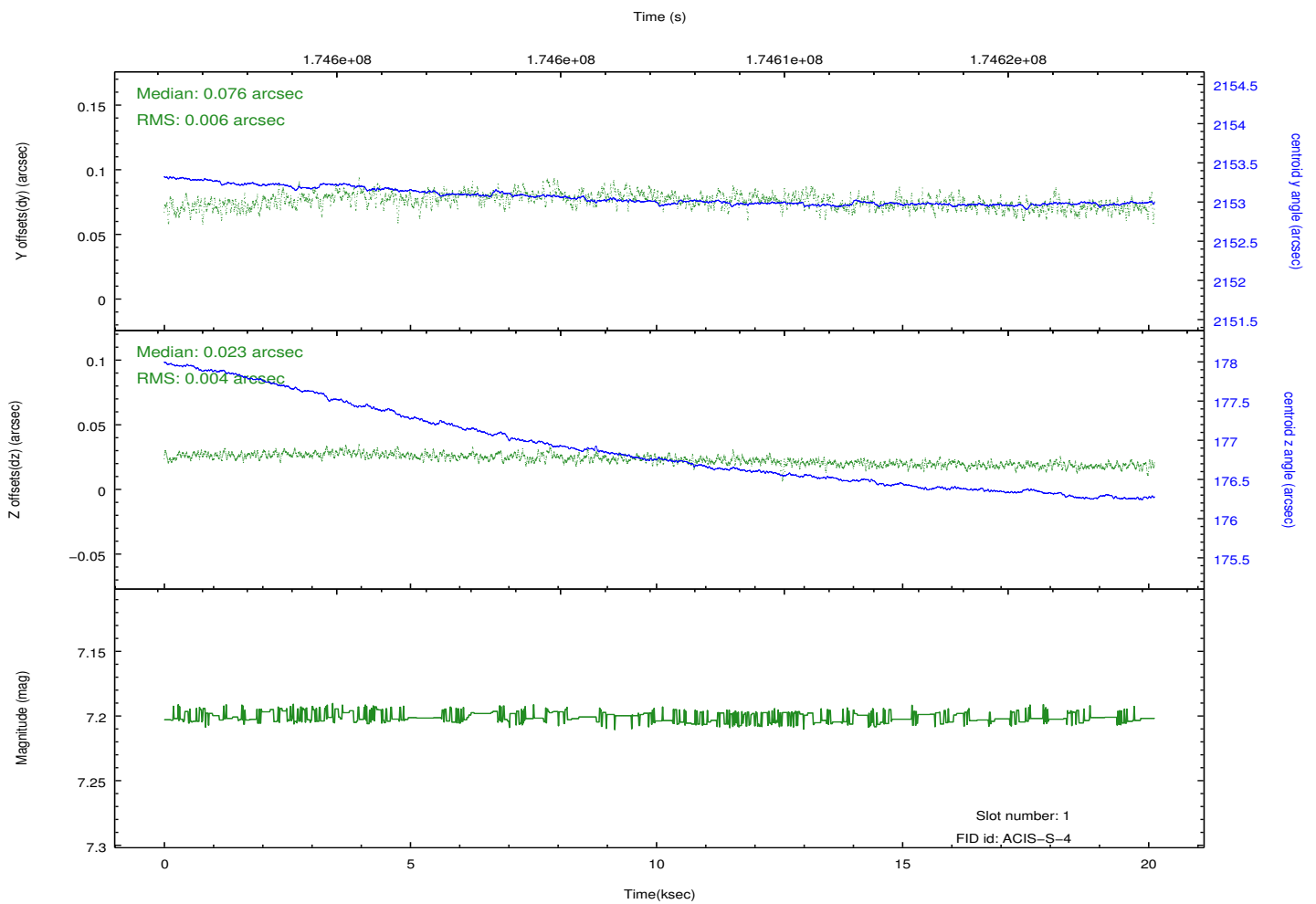
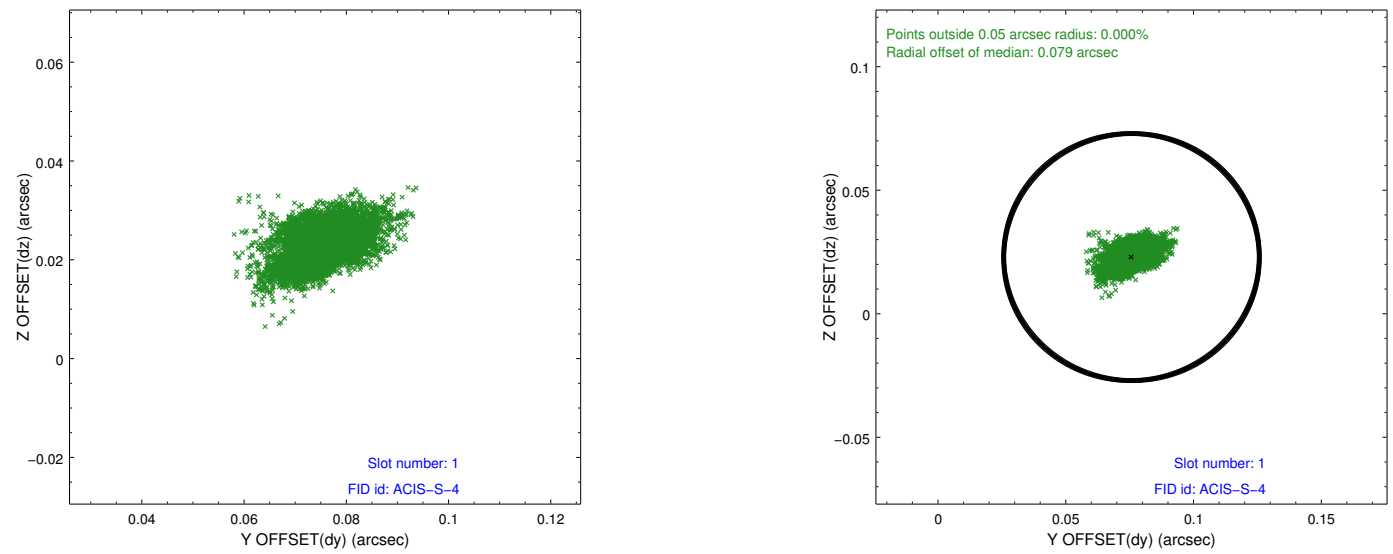


2.5 FID Slots

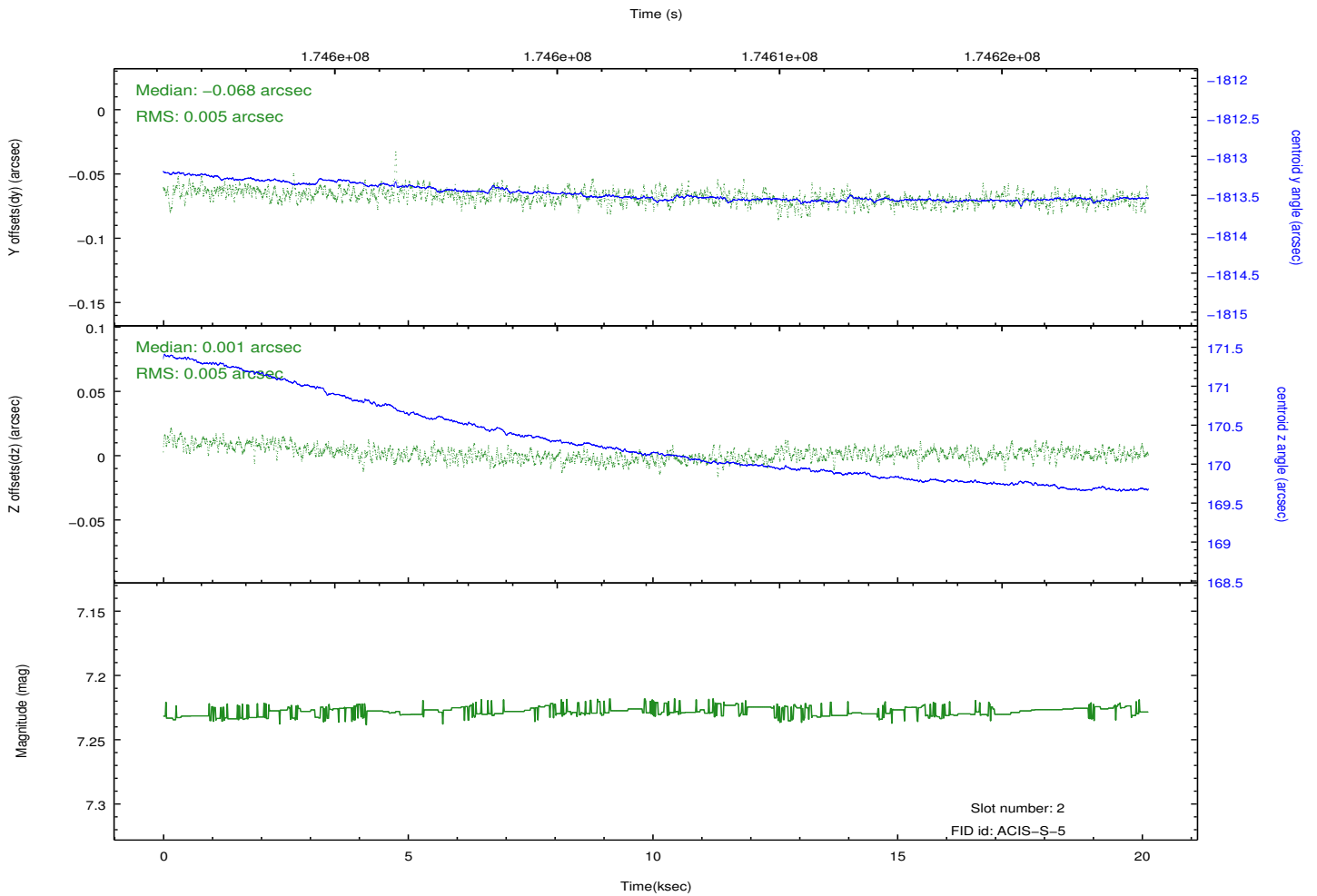
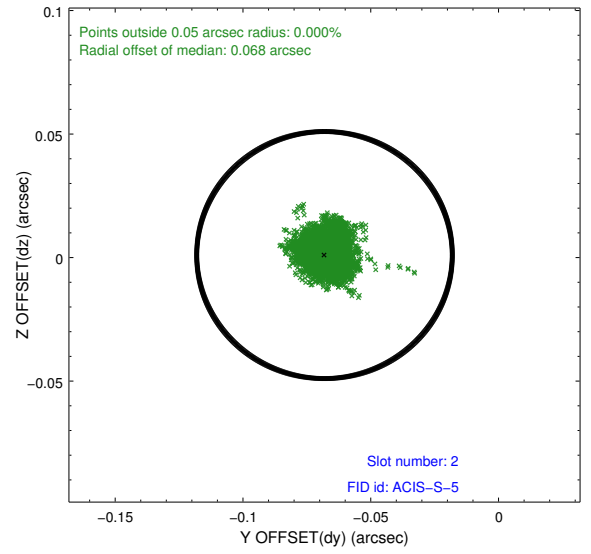
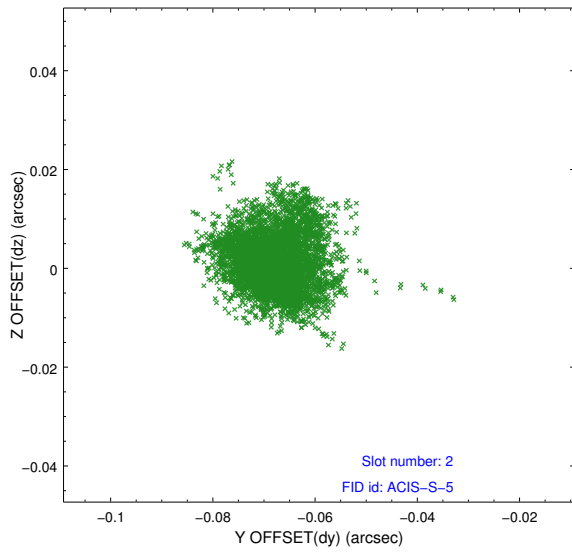
2.5.1 Slot 0



2.5.2 Slot 1



2.5.3 Slot 2



A Summary

A.1 Status

V&V Scientist	Jen Lauer
V&V Date (YYYY-MM-DD)	2012.11.16
V&V Edition	1
V&V Disposition and Status	OK
V&V Charge Time	20.121

A.2 Comments

Roll constraint satisfied. Joint Proposal with HST.