

V&V Reference Report

L2 ASCDS Version : 7.6.9

Observation 4105 - L2 Version 001
Chandra X-Ray Center

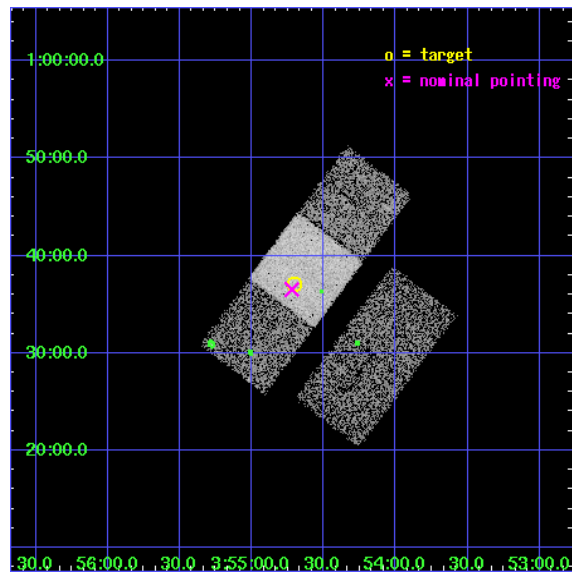
L2 Processing Date : Oct 15 2006

Contents

1	Front	2
2	OBI	3
2.1	OBI	3
2.1.1	Images	3
2.1.2	Bias	3
2.1.3	Parameters	4
2.1.4	Events	4
2.2	Compared Parameters	5
2.3	Aspect	6
2.4	Star Slots	9
2.4.1	Slot 3	9
2.4.2	Slot 4	10
2.4.3	Slot 5	11
2.4.4	Slot 6	12
2.4.5	Slot 7	13
2.5	FID Slots	14
2.5.1	Slot 0	14
2.5.2	Slot 1	15
2.5.3	Slot 2	16
3	Point Sources	17
A	Summary	18
A.1	Status	18
A.2	Comments	18

1 Front

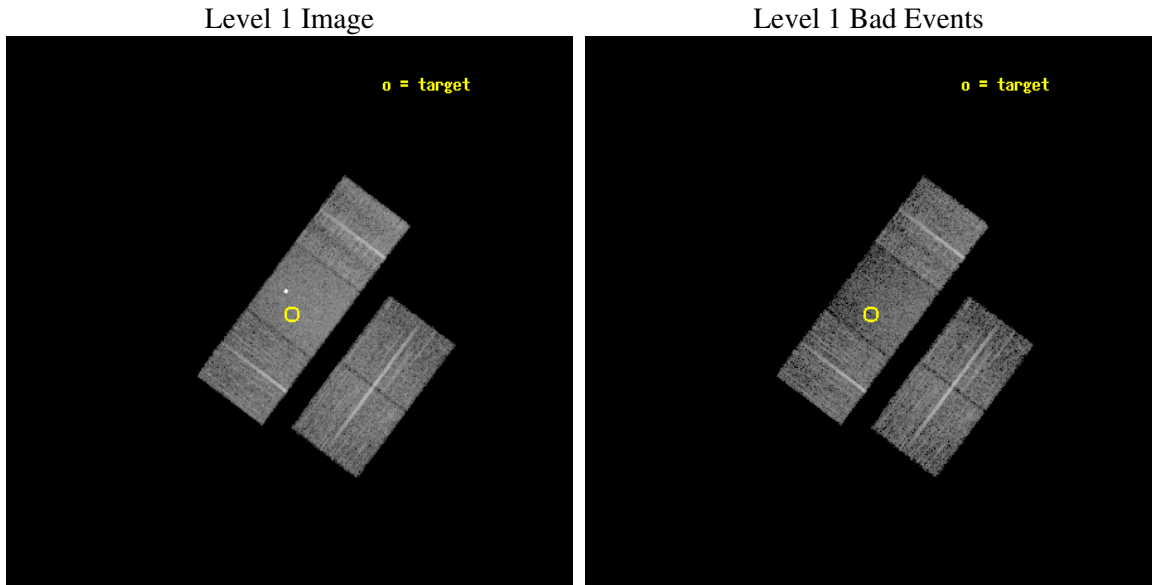
seq_num	700784
obs_id	4105
title	THE X-RAY PROPERTIES OF ULTRALUMINOUS INFRARED GALAXIES (ULIGS)
observer	Prof. Andrew Wilson
object	Z03521+0028
dtcycle	0
cycle	P
ra_targ	58.675833
dec_targ	0.617333
ra_nom	58.680220355612
dec_nom	0.60876176850177
roll_nom	306.8954490783
revision	2
ontime	9910.6999809444
livetime	9781.2093895422
ontime2	9910.6999809444
ontime3	9907.5590007305
ontime6	9910.6999809444
ontime7	9910.6999809444
ontime8	9910.6999809444
l2events	41979



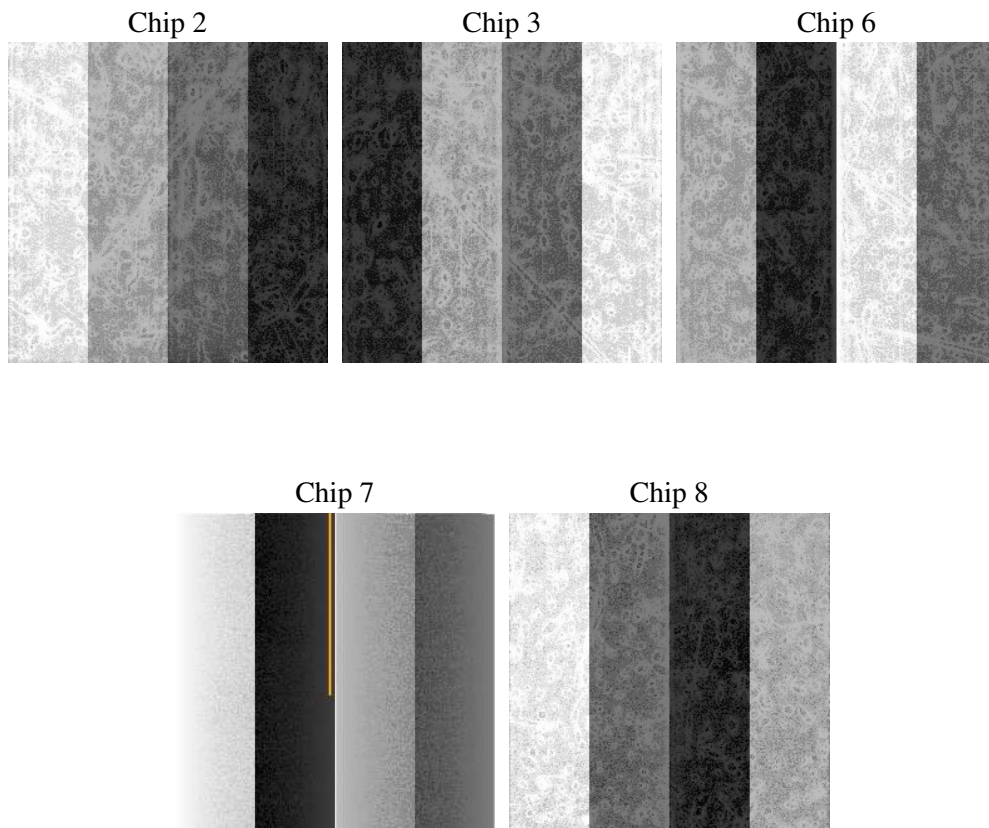
2 OBI

2.1 OBI

2.1.1 Images



2.1.2 Bias



2.1.3 Parameters

obi_num	0
ascdsver	7.6.9
caldbver	3.2.3
date	2006-10-16T01:25:27
revision	2

sched_exp_time	9802.717000
ontime	9913.0256943405
ontime2	9913.0256943405
ontime3	9909.8847141266
ontime6	9913.0256943405
ontime7	9913.0256943405
ontime8	9913.0256943405
l1events	268160

2.1.4 Events

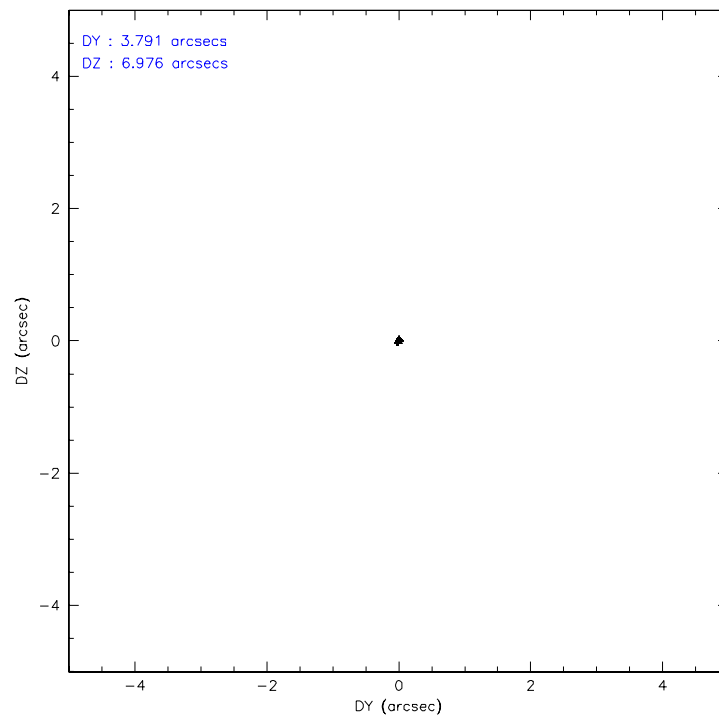
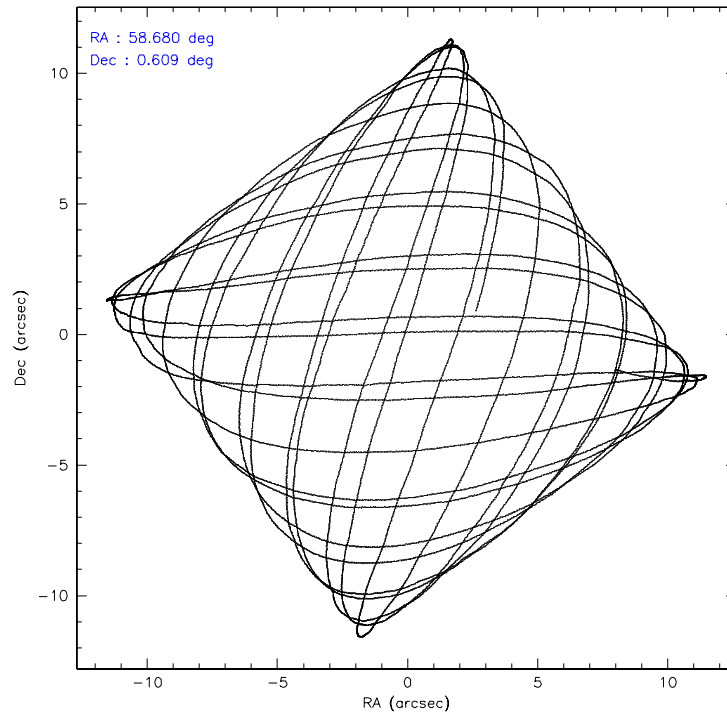
	ccd 2	ccd 3	ccd 6	ccd 7	ccd 8
level 1 events	50098	45918	49265	59891	62988
rejected events	45358	41599	44079	31622	48675
rejected %	90%	90%	89%	52%	77%

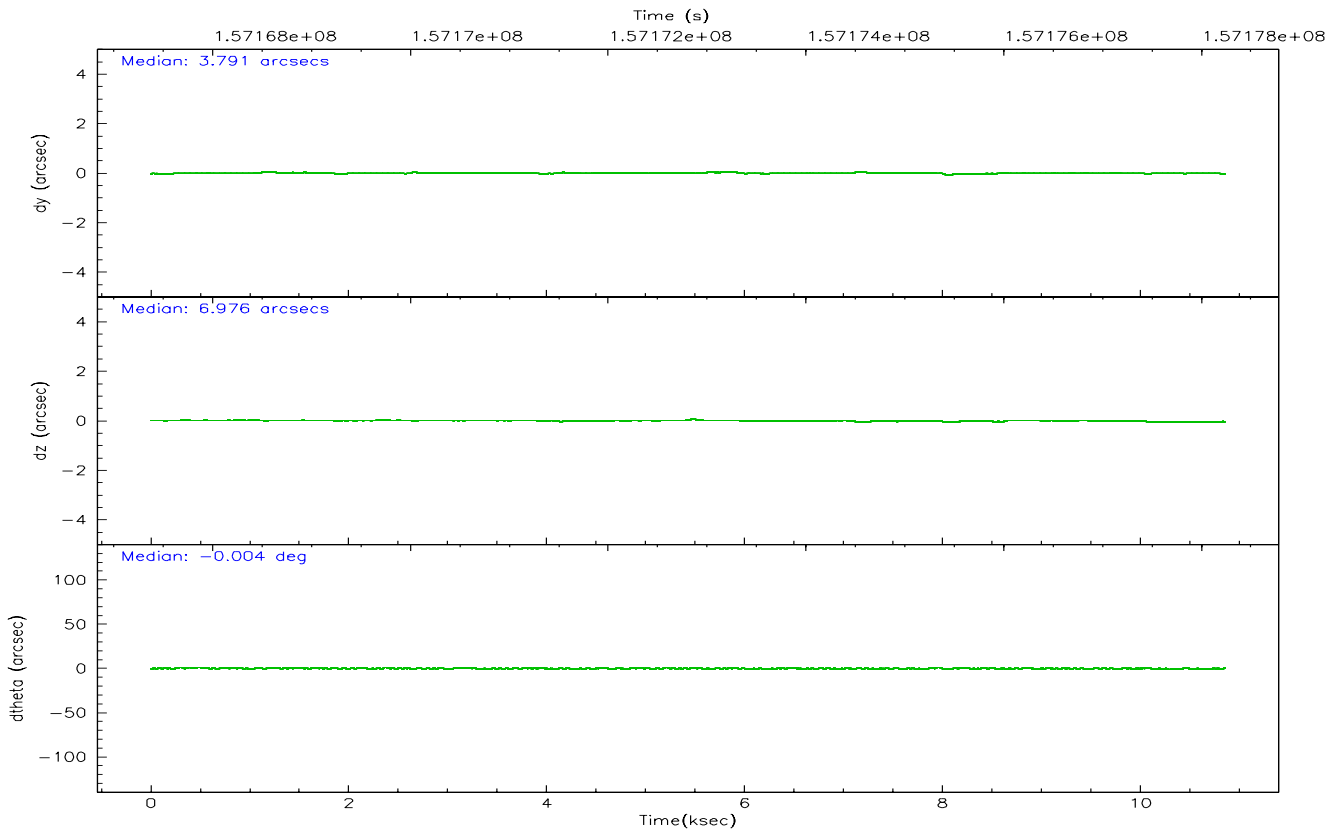
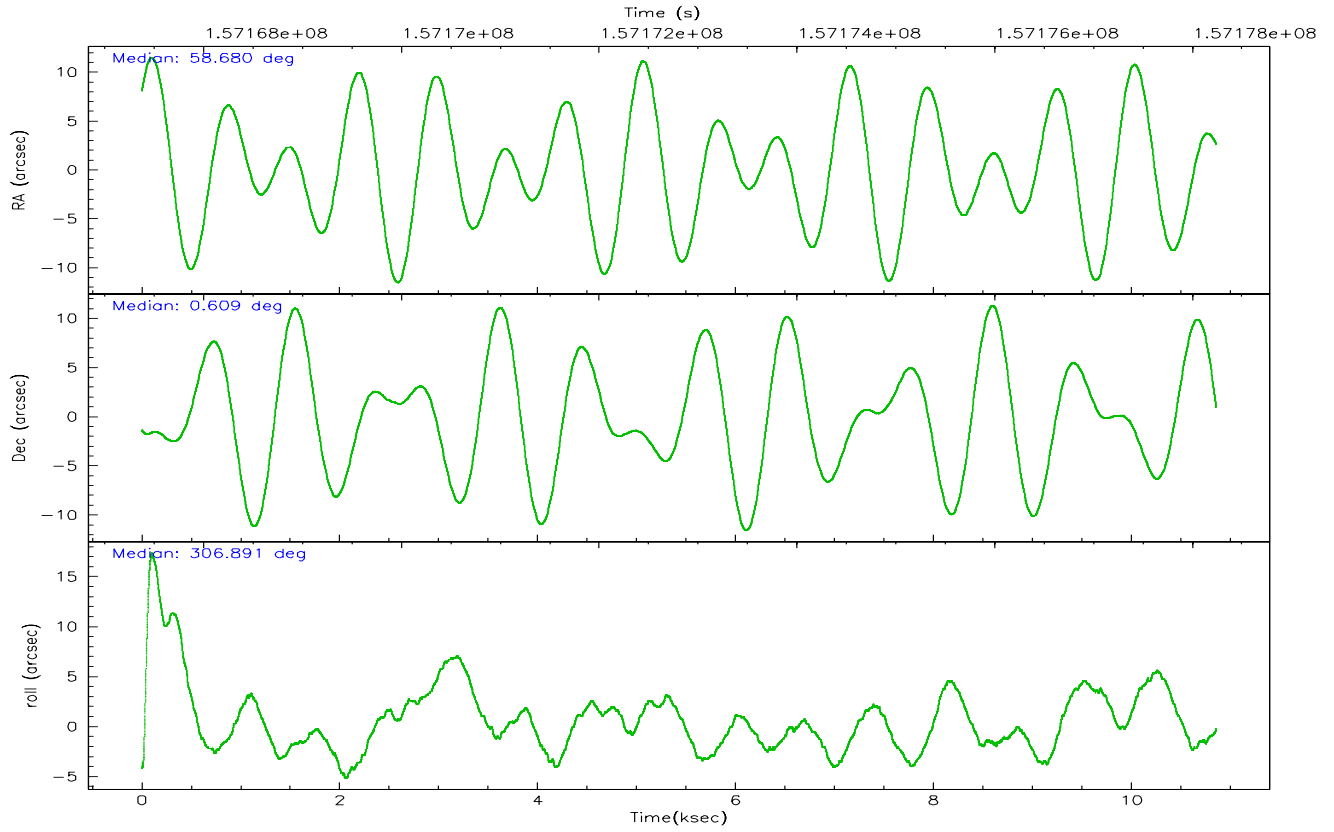
	ccd 2	ccd 3	ccd 6	ccd 7	ccd 8
grade 0 events	1762	1595	1859	4687	4516
	3%	3%	3%	7%	7%
grade 1 events	16	31	27	33	49
	0%	0%	0%	0%	0%
grade 2 events	1010	933	1118	6123	3109
	2%	2%	2%	10%	4%
grade 3 events	566	503	577	1462	1591
	1%	1%	1%	2%	2%
grade 4 events	540	486	575	1433	1506
	1%	1%	1%	2%	2%
grade 5 events	1565	1748	1908	3926	2574
	3%	3%	3%	6%	4%
grade 6 events	862	803	1057	14574	3595
	1%	1%	2%	24%	5%
grade 7 events	43777	39819	42144	27653	46048
	87%	86%	85%	46%	73%

2.2 Compared Parameters

Parameter	Planned	Actual	Parameter	Planned	Actual
Instrument	ACIS	ACIS	Obspar format version number	6	6
Detector	ACIS-23678	ACIS-23678	Obspar file type	PREDICTED	ACTUAL
Grating	NONE	NONE	Obspar update status	NONE	UPDATED
Data mode	VFAINT	VFAINT	Number of optional ACIS chips dropped	0	0
Observation mode	POINTING	POINTING	On-chip summing requested	N	N
Pointing RA	58.655005	58.68022035561212	Subarray requested	NONE	NONE
Pointing Dec	0.619045	0.6087617685017688	Alternating exposures requested	N	N
Pointing Roll	306.739080	306.8954490782979	Primary exposure time	0.000000	3.1
SIM focus pos (mm)	-0.684267	-0.6828225247311905			
SIM defocus (mm)	0	0.001444936568705701			
SIM translation stage pos (mm)	-190.132523	-190.1425803651734			
SIM translation stage offset (mm)	0	0.01005778216563158			
Observation start time	157168431.184000	157167033.41724			
Observation start date	2002-12-25T01:52:47	2002-12-25T01:30:33			
Observation end time	157178234.184000	157178548.78022			
Observation end date	2002-12-25T04:36:10	2002-12-25T04:42:28			
Read mode	TIMED	TIMED			

2.3 Aspect



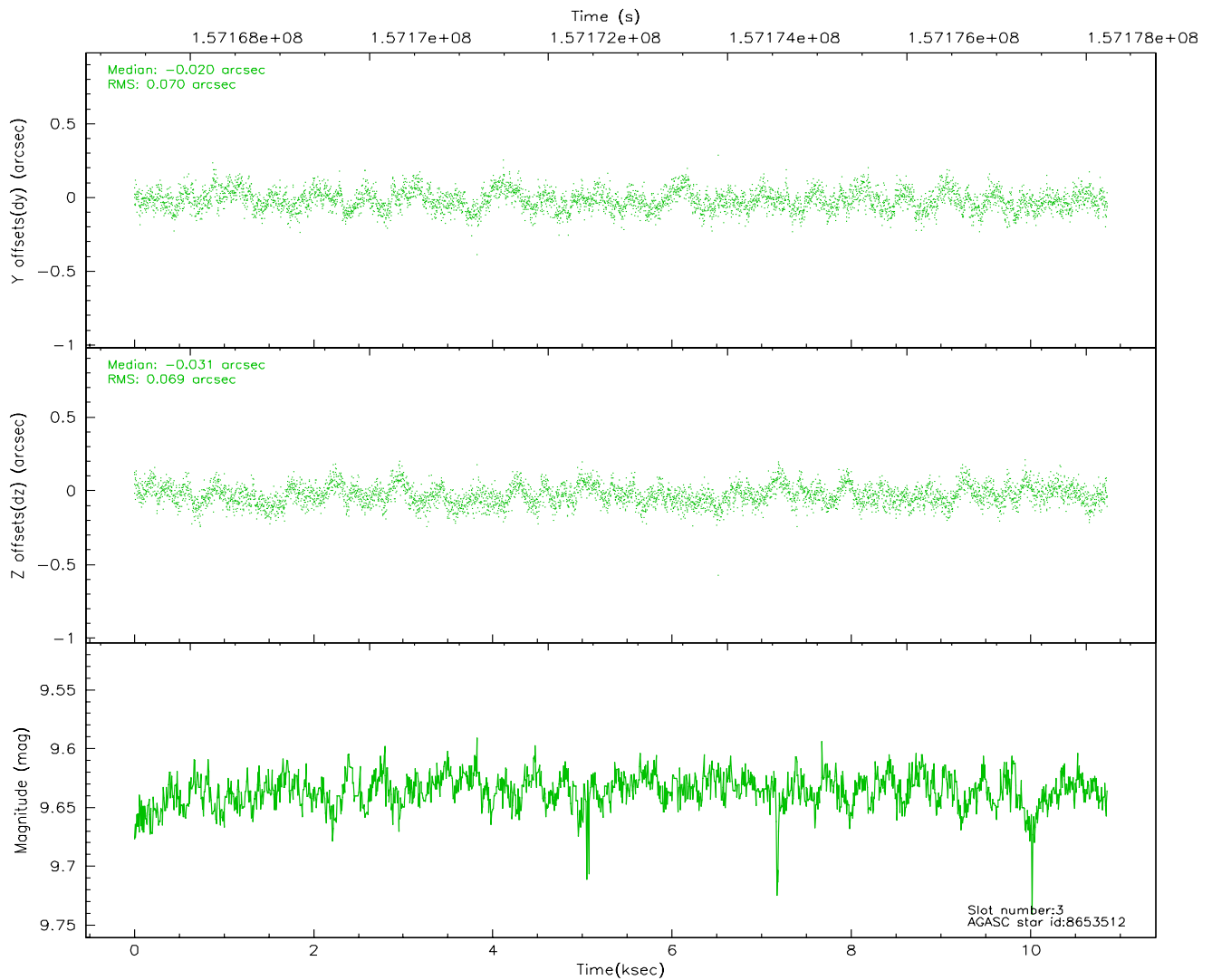
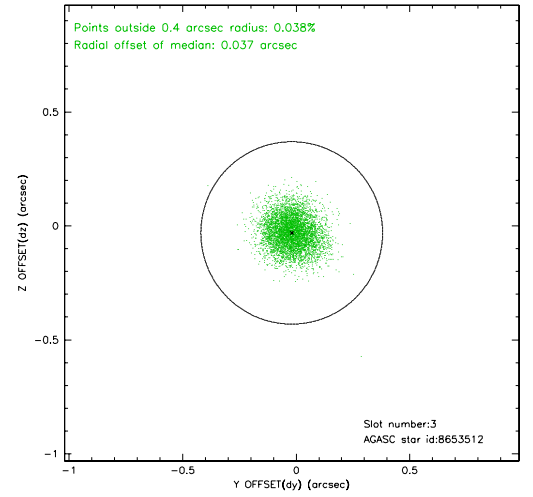
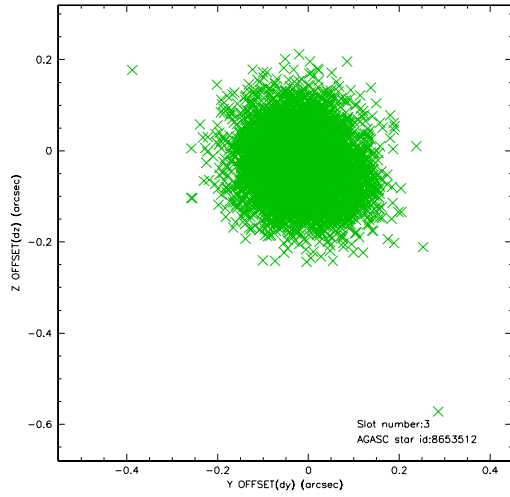


Slot Statistics

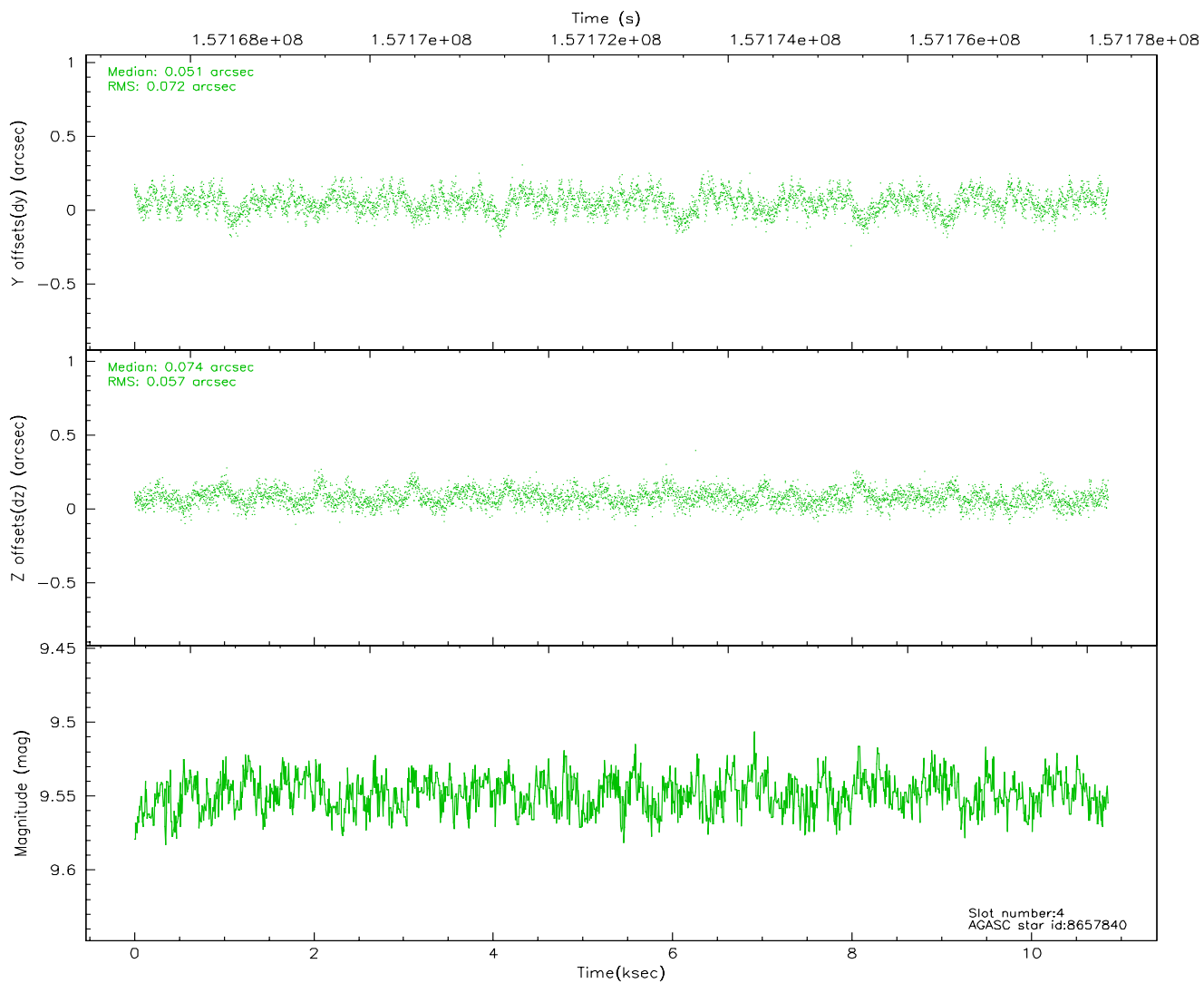
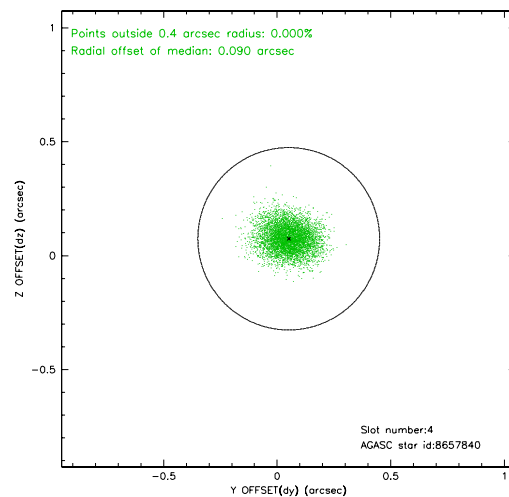
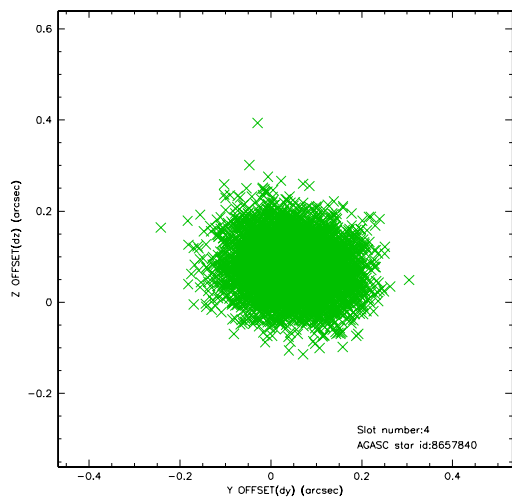
slot	status	id	mag	n_pts	med_dy	med_dz	dr1	dr2	ra	dec	mean_y	mean_z
0	FID	ACIS-S-2	7.12	2648	-0.005	0.031	0.006	0.010	0.000000	0.000000	-756.45	-1728.06
1	FID	ACIS-S-4	7.21	2648	-0.027	-0.005	0.005	0.008	0.000000	0.000000	2156.58	179.91
2	FID	ACIS-S-5	7.24	2649	0.001	-0.016	0.006	0.010	0.000000	0.000000	-1808.68	174.10
3	GUIDE	8653512	9.64	5274	-0.020	-0.031	0.105	0.168	58.520496	0.999820	-1387.74	431.85
4	GUIDE	8657840	9.55	5296	0.051	0.074	0.097	0.157	59.291205	0.381176	2056.28	1323.59
5	GUIDE	8658016	8.06	5297	-0.072	0.049	0.067	0.109	58.594308	1.261617	-1983.48	1208.71
6	GUIDE	8658136	8.77	5297	0.032	0.028	0.079	0.126	58.722317	0.010721	1900.23	-1115.33
7	GUIDE	618399720	9.68	5294	0.012	-0.117	0.114	0.190	58.556981	-0.140048	1979.93	-1917.70

2.4 Star Slots

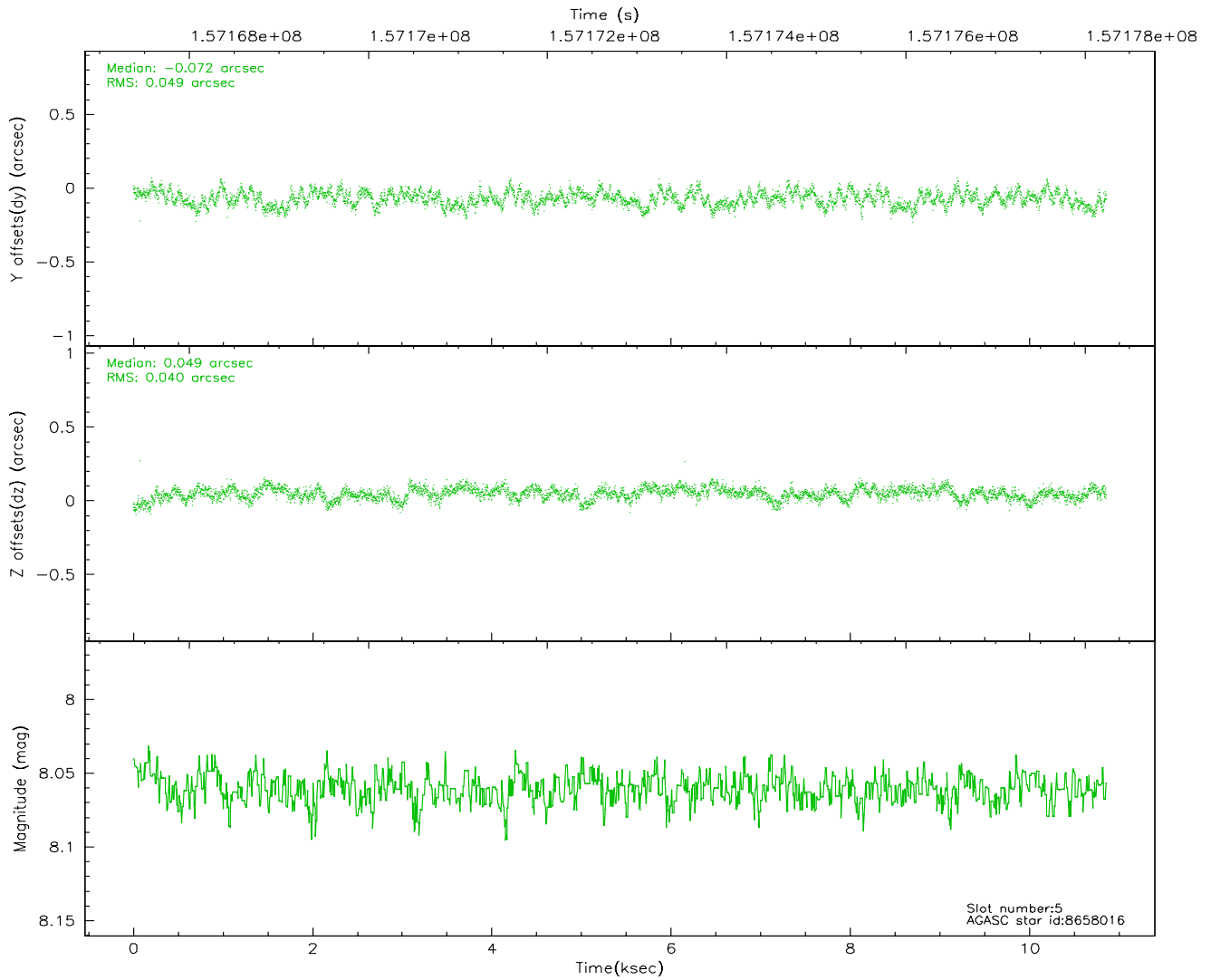
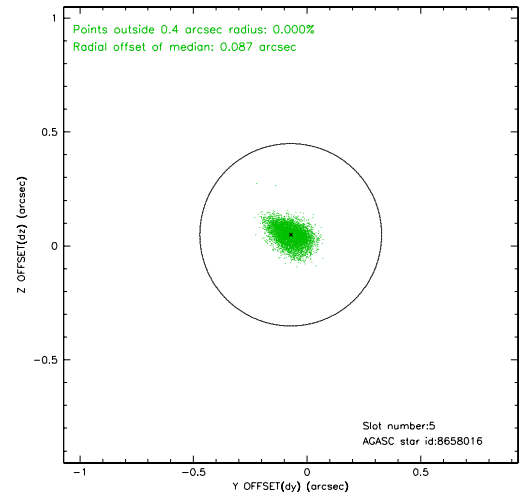
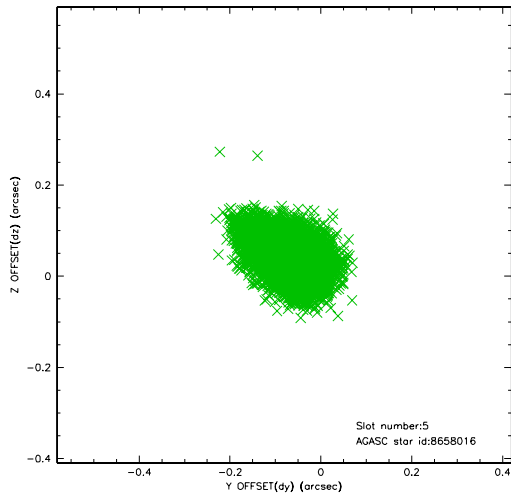
2.4.1 Slot 3



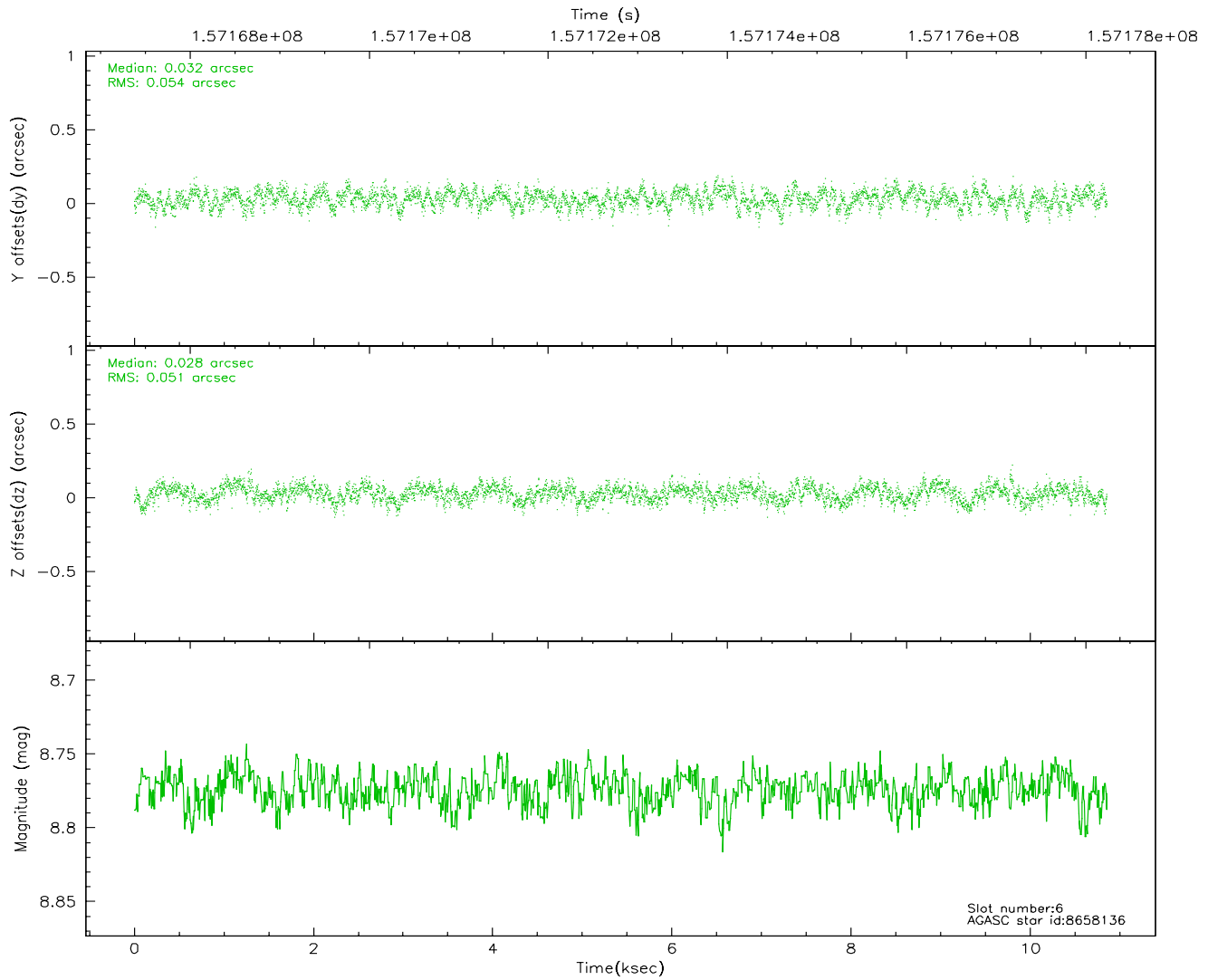
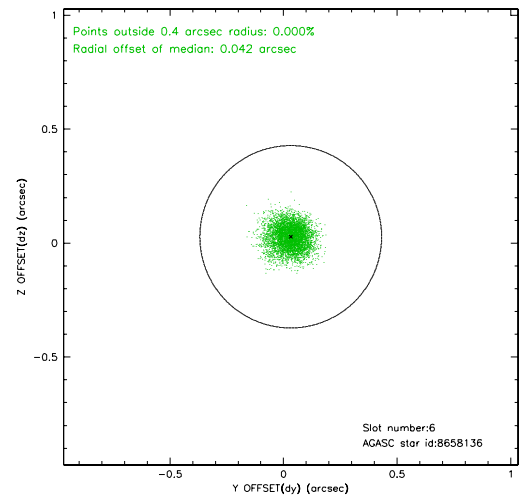
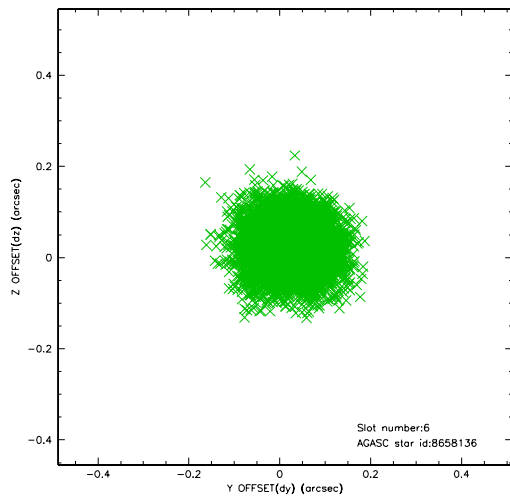
2.4.2 Slot 4



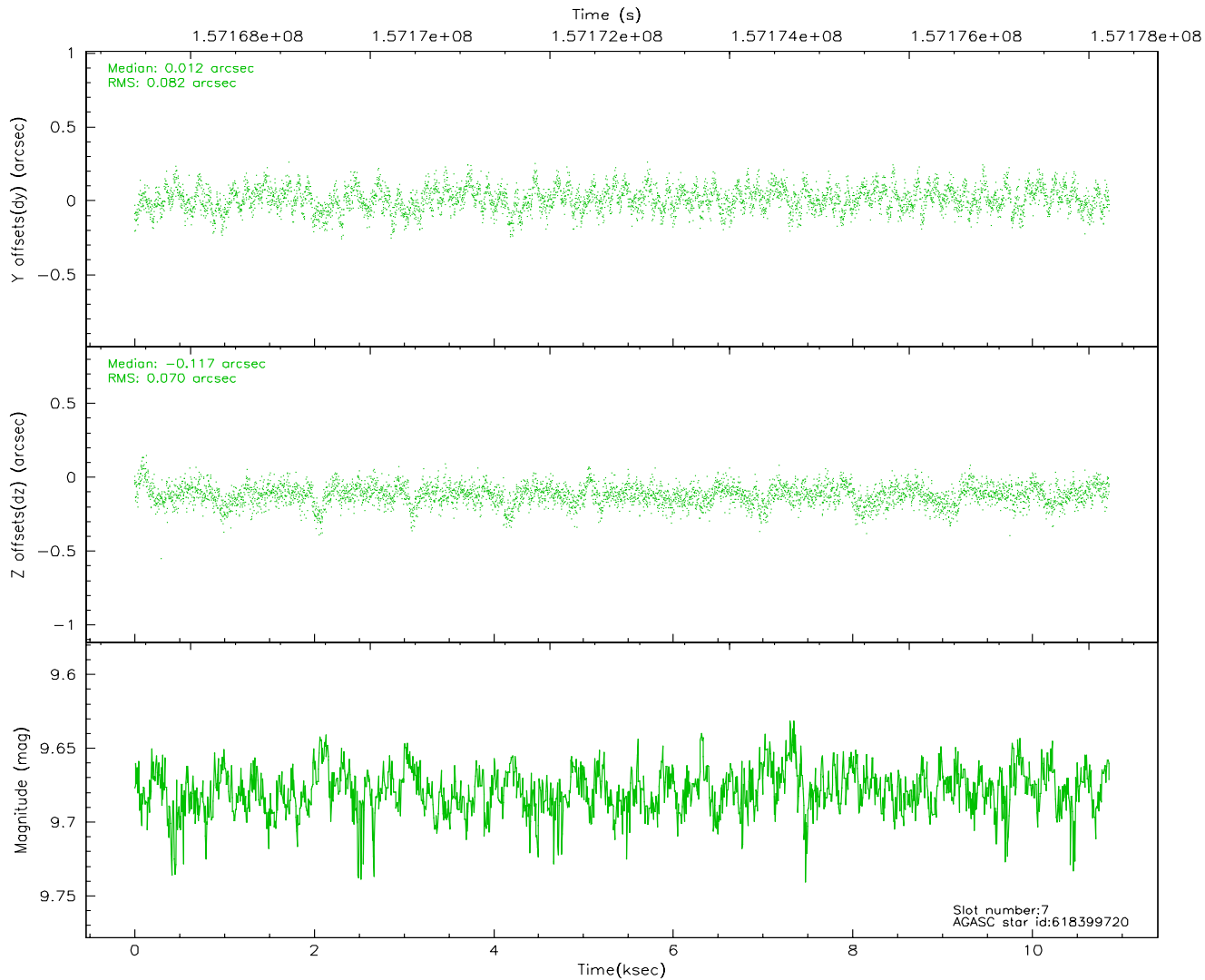
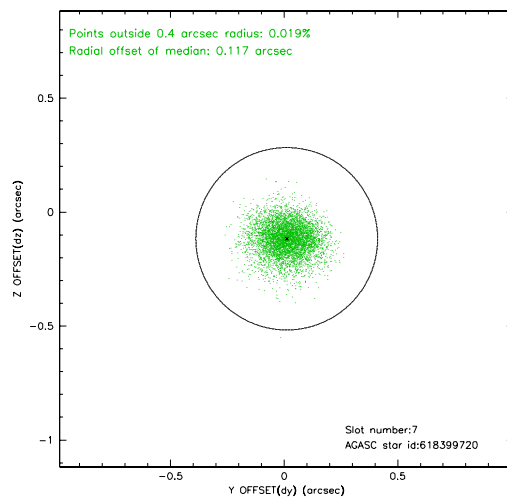
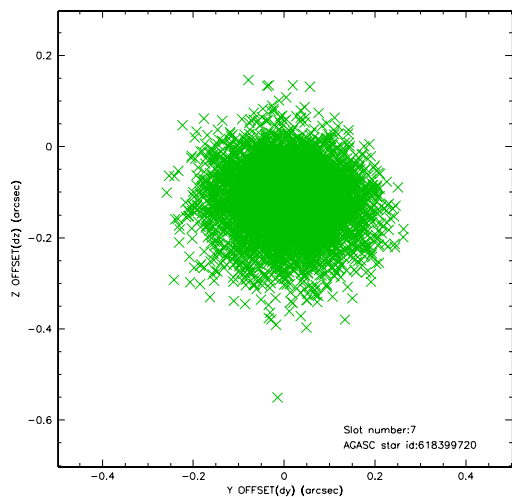
2.4.3 Slot 5



2.4.4 Slot 6

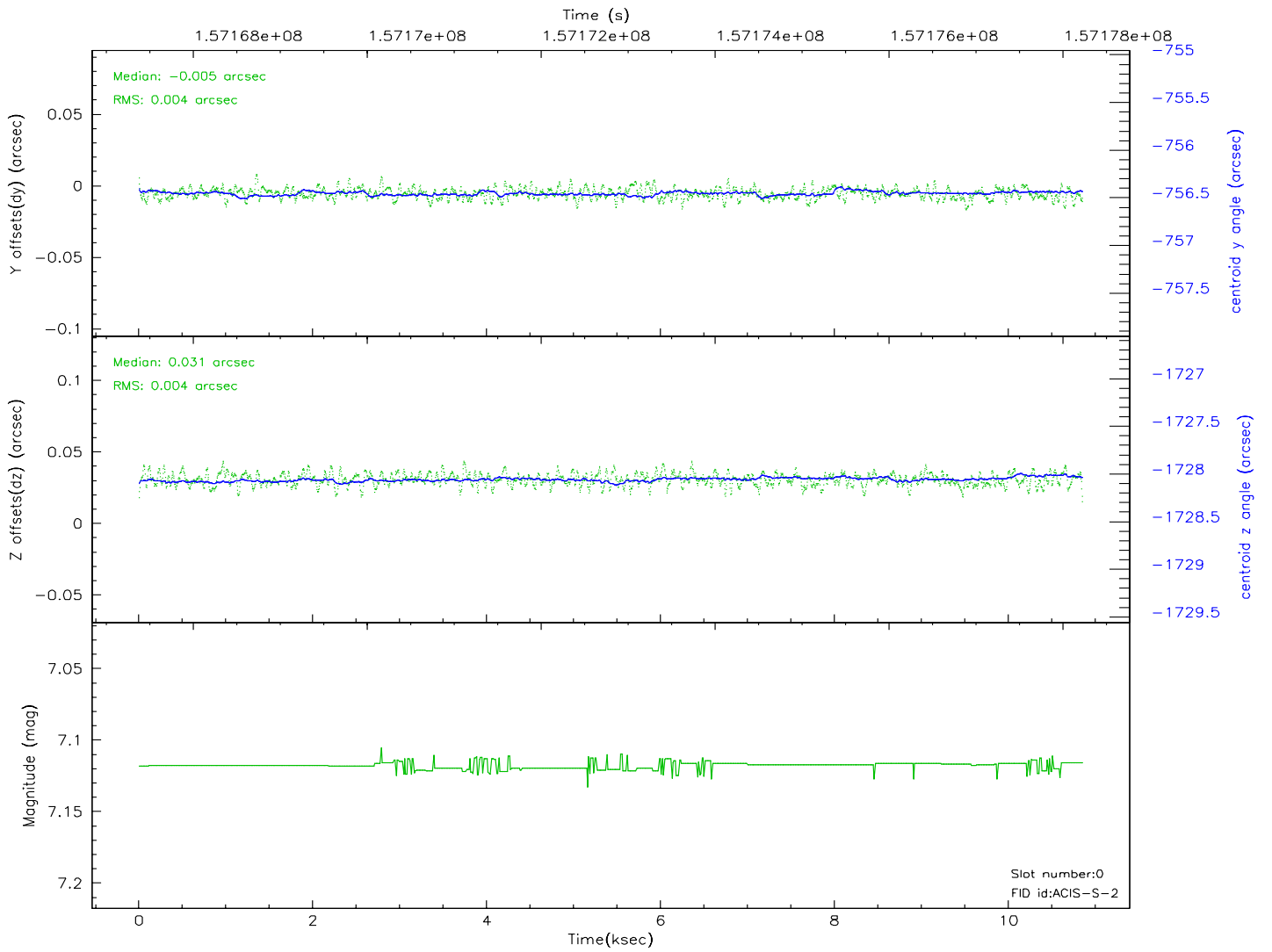
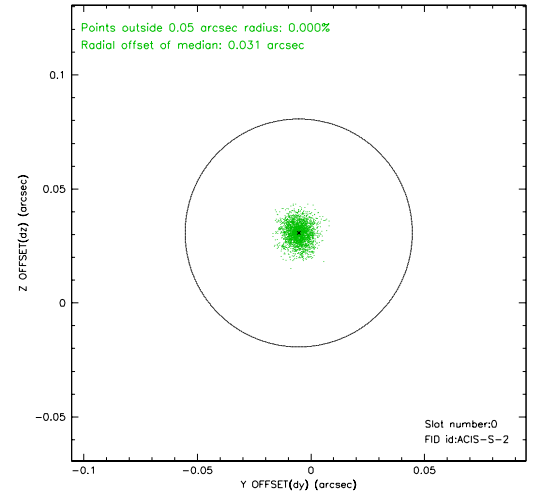
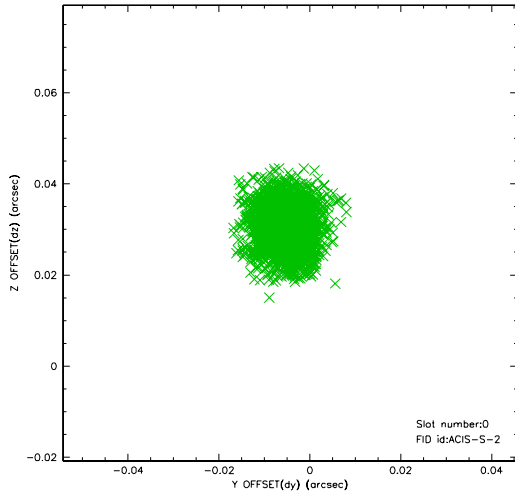


2.4.5 Slot 7

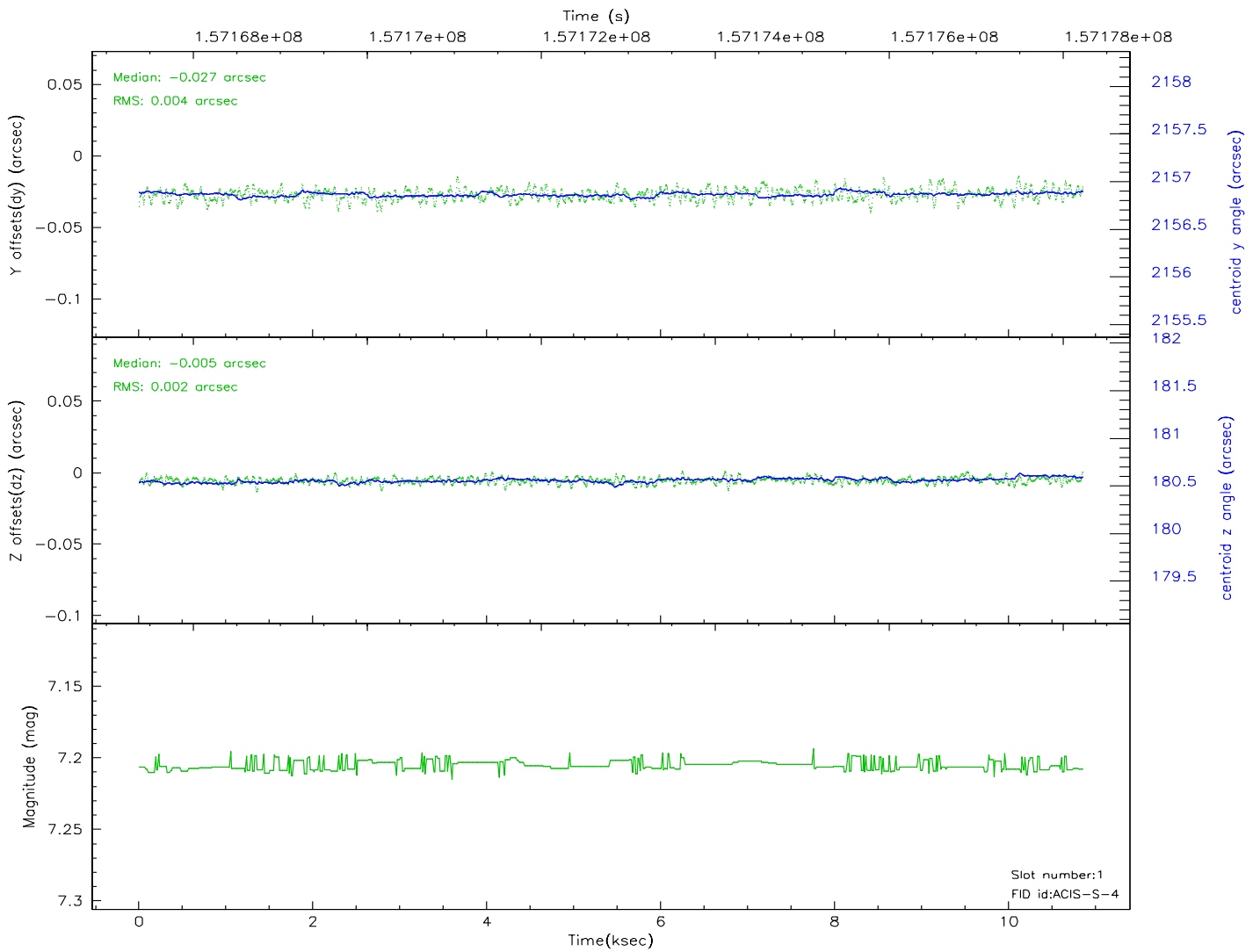
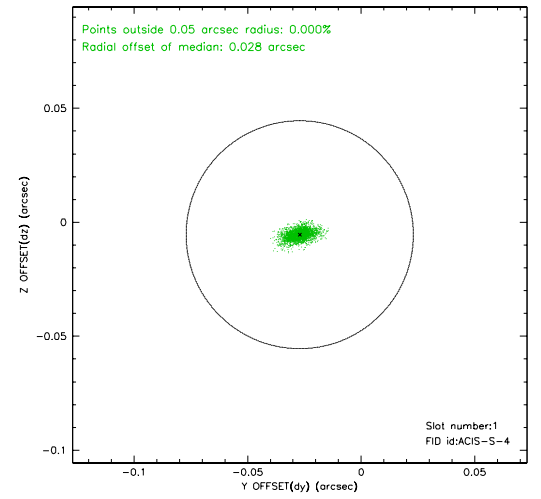
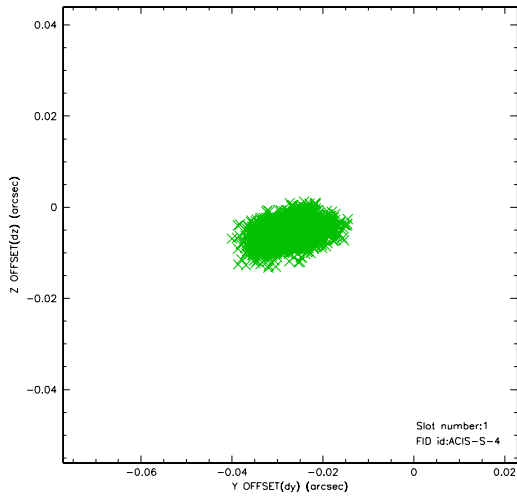


2.5 FID Slots

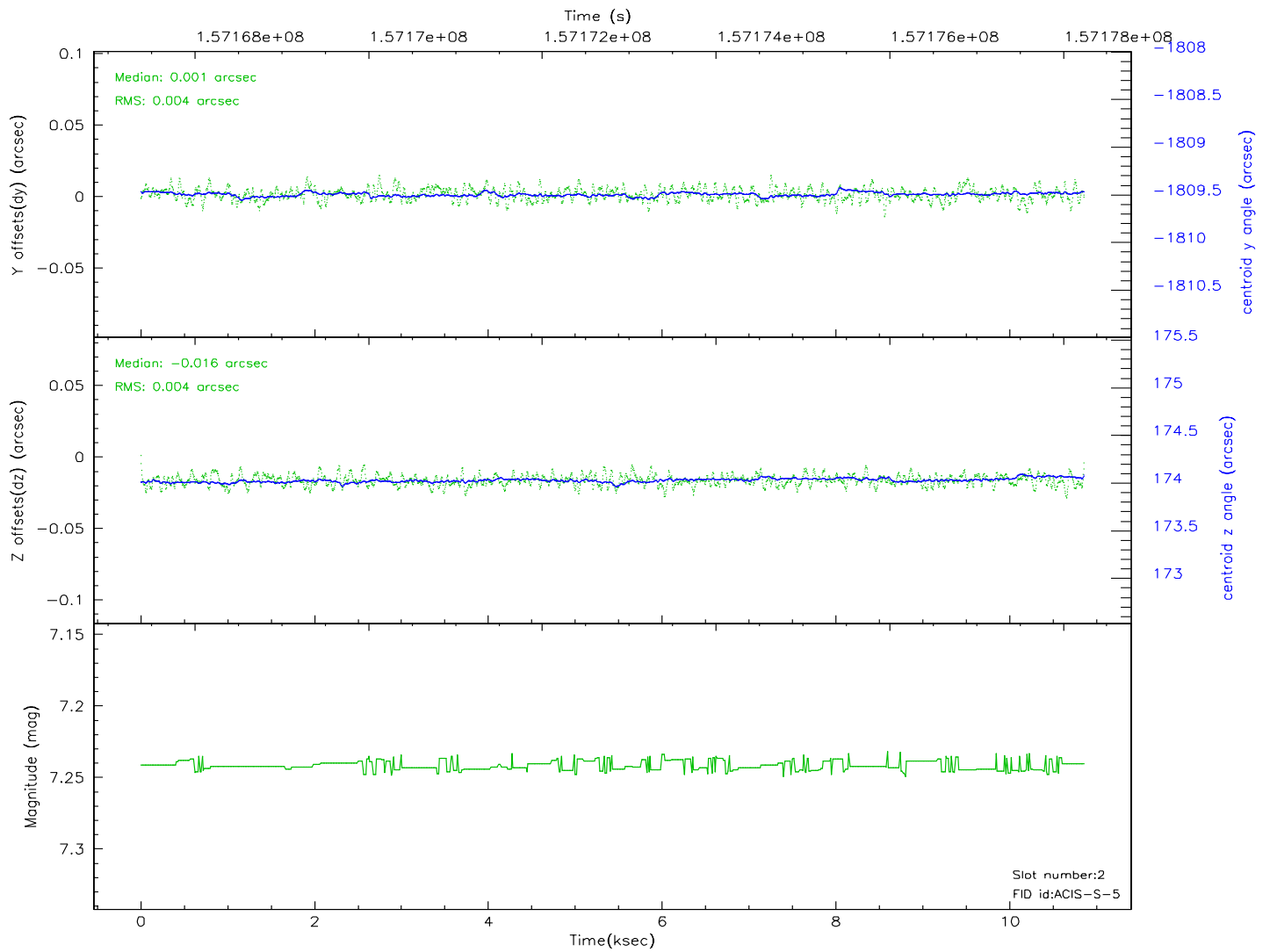
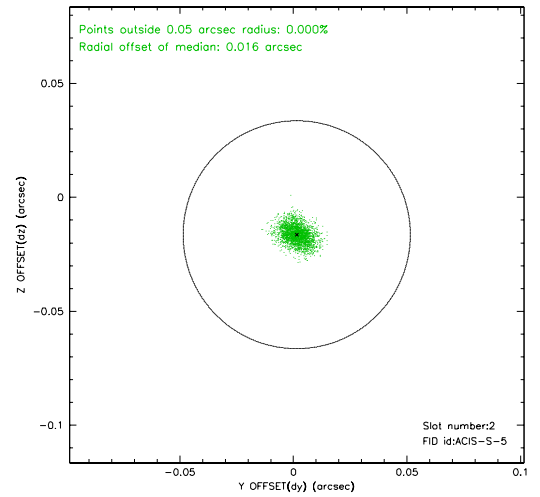
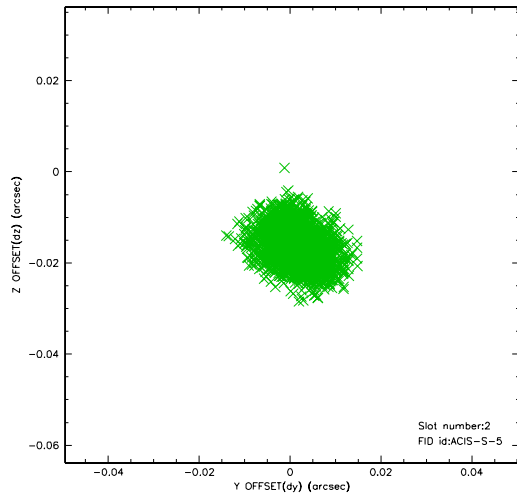
2.5.1 Slot 0



2.5.2 Slot 1



2.5.3 Slot 2

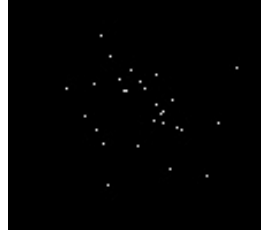


3 Point Sources

10.07 arcmin



8.86 arcmin



A Summary

A.1 Status

V&V Scientist	Beth Sundheim
V&V Date (YYYY-MM-DD)	2006.10.16
V&V Edition	1
V&V Disposition and Status	OK
V&V Charge Time	9.91

A.2 Comments