

V&V Reference Report

L2 ASCDS Version : 8.4.5

Observation 4275 - L2 Version 3
Chandra X-Ray Center

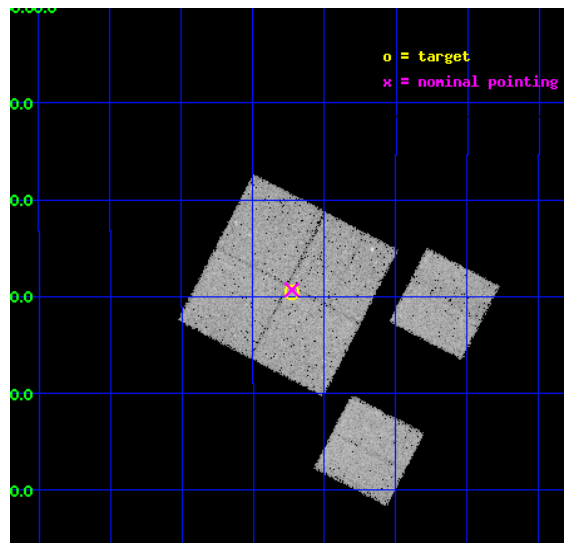
L2 Processing Date : Oct 29 2012

Contents

1	Front	2
2	OBI	3
2.1	OBI	3
2.1.1	Images	3
2.1.2	Bias	3
2.1.3	Parameters	4
2.1.4	Events	4
2.2	Compared Parameters	5
2.3	Aspect	6
2.4	Star Slots	9
2.4.1	Slot 3	9
2.4.2	Slot 4	10
2.4.3	Slot 5	11
2.4.4	Slot 6	12
2.4.5	Slot 7	13
2.5	FID Slots	14
2.5.1	Slot 0	14
2.5.2	Slot 1	15
2.5.3	Slot 2	16
A	Summary	17
A.1	Status	17
A.2	Comments	17

1 Front

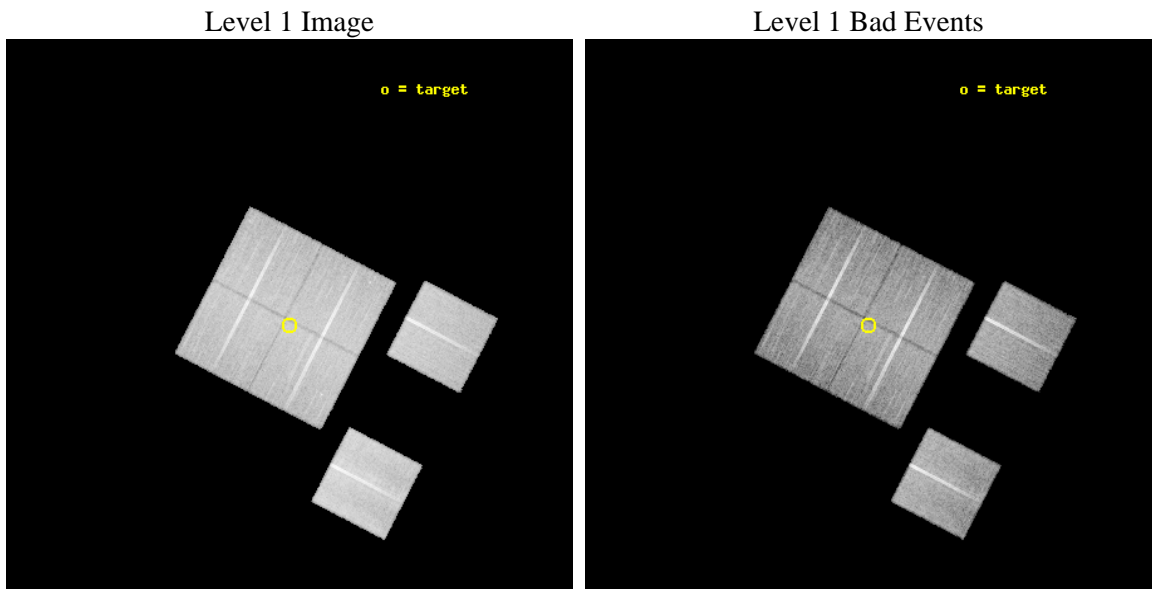
seq_num	900318	Sequence number
obs_id	4275	Observation id
title	A CHANDRA/XMM ATTACK ON THE ASTROPHYSICS OF THE HARD X-RAY BACKGROUND.	Proposal title
observer	Prof. Ian McHardy	Principal investigator
object	XMM 1HR - FIELD 4	Source name
dtcycle	0	
cycle	P	events from which exps? Prim/Second/Both
ra_targ	26.307425	Observer's specified target RA [deg]
dec_targ	-4.49298	Observer's specified target Dec [deg]
ra_nom	26.307058089728	Nominal RA [deg]
dec_nom	-4.4883638423774	Nominal Dec [deg]
roll_nom	117.40863414972	Nominal Roll [deg]
revision	3	Processing version of data
ontime	30111.999887824	Sum of GTIs [s]
livetime	29730.703613975	Livetime [s]
ontime0	30111.999887824	Sum of GTIs [s]
ontime1	30102.2770468	Sum of GTIs [s]
ontime2	30111.999887824	Sum of GTIs [s]
ontime3	30111.999887824	Sum of GTIs [s]
ontime6	30108.75891754	Sum of GTIs [s]
ontime8	30111.999887824	Sum of GTIs [s]
l2events	114874	Number of level 2 events



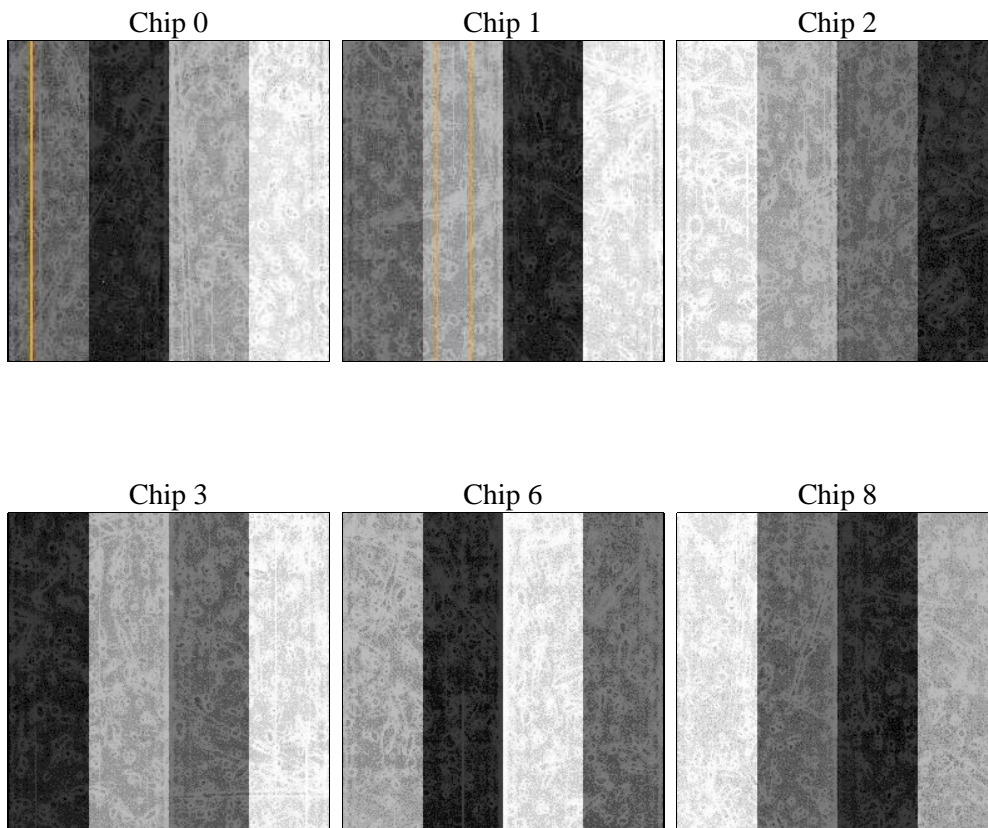
2 OBI

2.1 OBI

2.1.1 Images



2.1.2 Bias



2.1.3 Parameters

obi_num	2	Obi number	sched_exp_time	30000.000000	[s] Scheduled observation exposure time
ascdsver	8.4.5	Processing system revision	ontime	30111.999887824	Sum of GTIs [s]
caldbver	4.5.2	 	ontime0	30111.999887824	Sum of GTIs [s]
date	2012-10-29T05:00:36	Date and time of file creation	ontime1	30102.2770468	Sum of GTIs [s]
revision	3	Processing version of data	ontime2	30111.999887824	Sum of GTIs [s]
			ontime3	30111.999887824	Sum of GTIs [s]
			ontime6	30108.75891754	Sum of GTIs [s]
			ontime8	30111.999887824	Sum of GTIs [s]
			l1events	1107726	Number of level 1 events

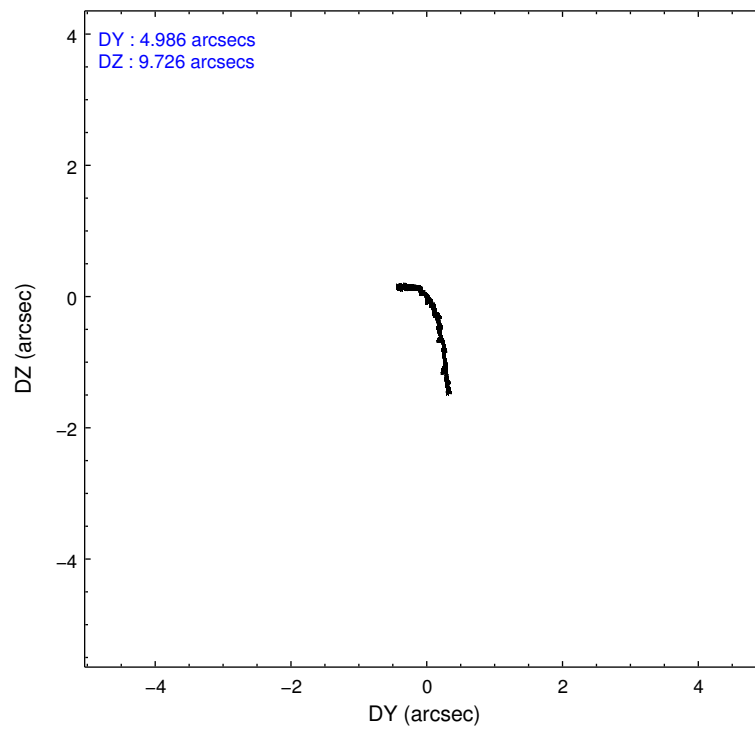
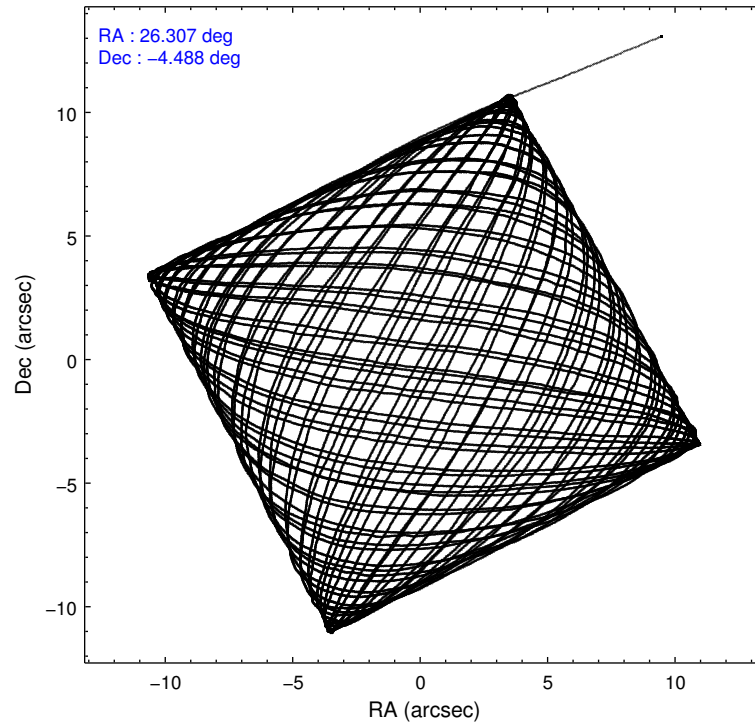
2.1.4 Events

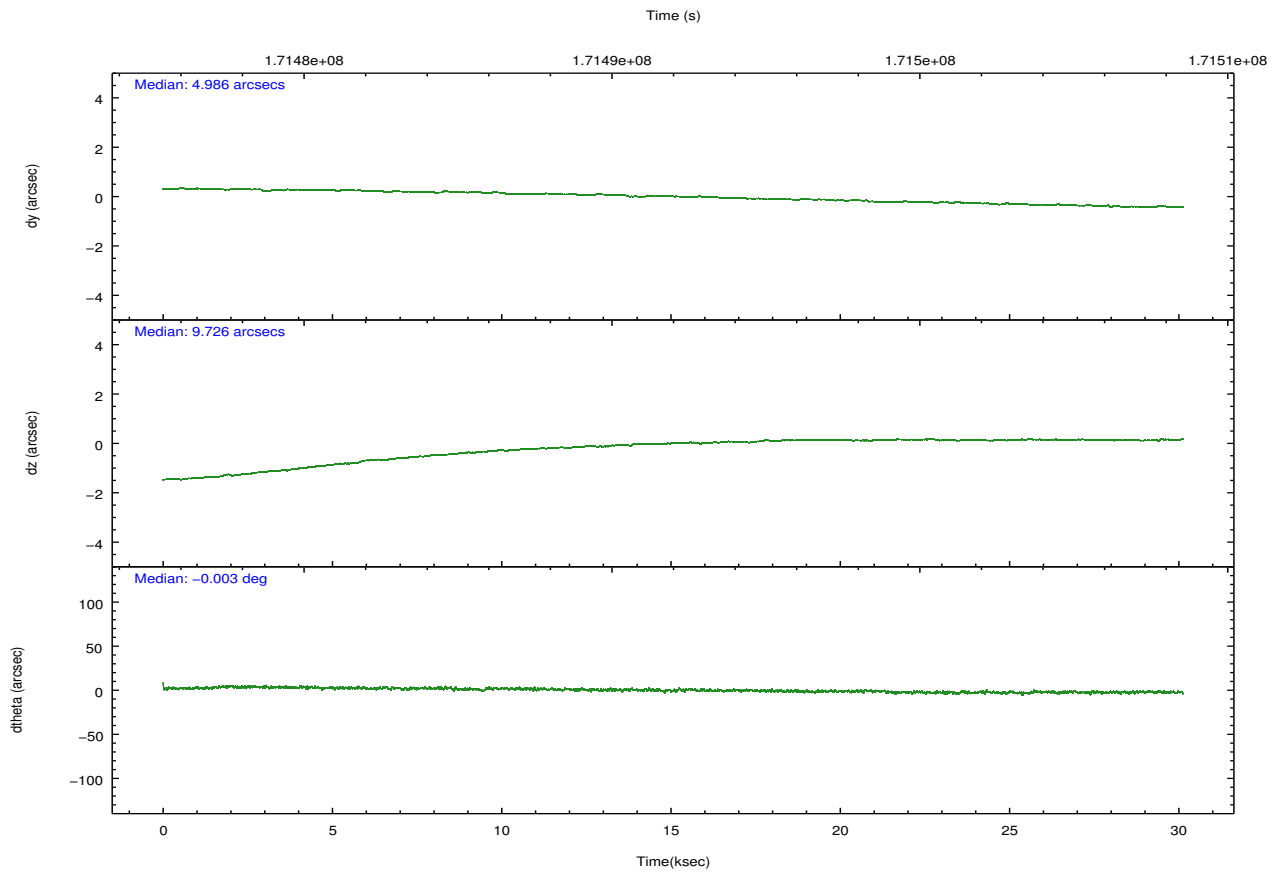
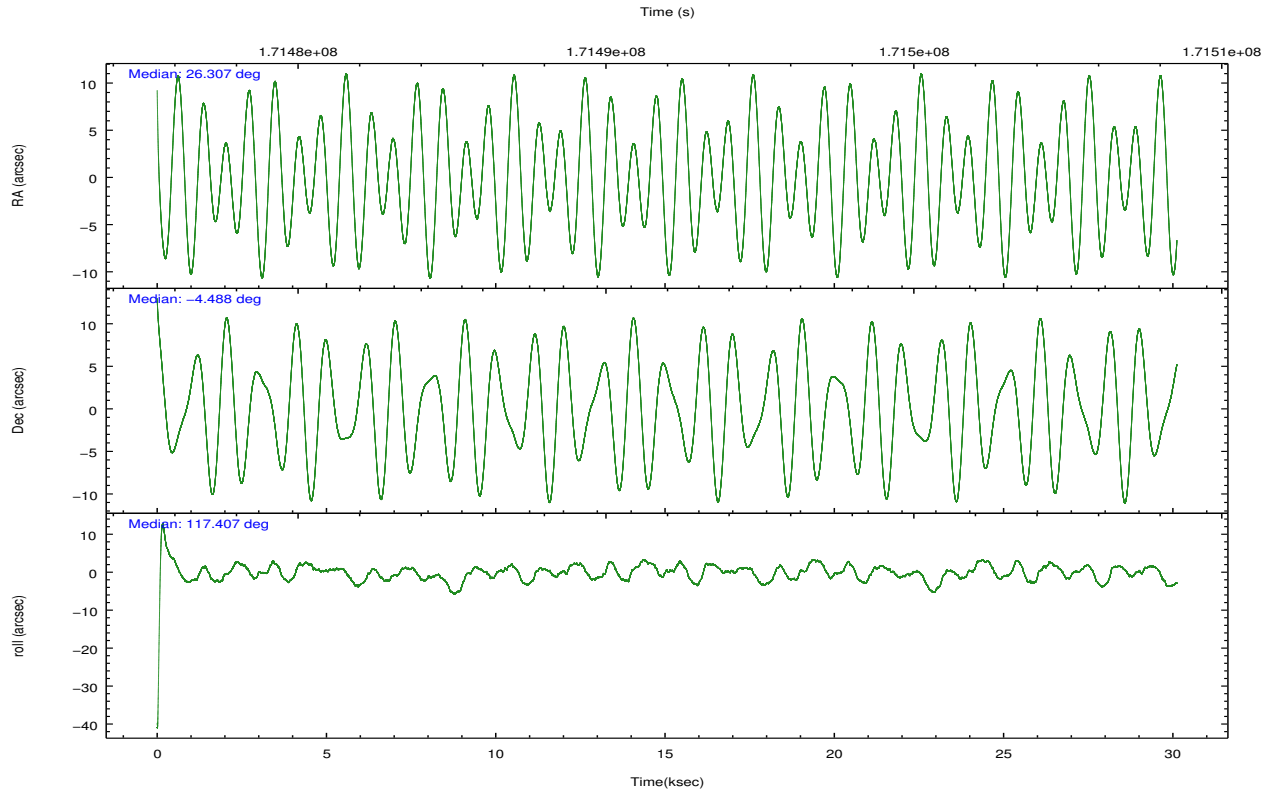
	ccd 0	ccd 1	ccd 2	ccd 3	ccd 6	ccd 8		ccd 0	ccd 1	ccd 2	ccd 3	ccd 6	ccd 8
level 1 events	165912	167895	179697	179222	179761	235239	grade 0 events	9423	9335	9788	9478	8590	15273
rejected events	144072	144708	158353	157890	158426	187816		5%	5%	5%	5%	4%	6%
rejected %	86%	86%	88%	88%	88%	79%	grade 1 events	88	80	86	78	69	147
								0%	0%	0%	0%	0%	0%
							grade 2 events	4475	4929	4192	3944	4287	10185
								2%	2%	2%	2%	2%	4%
							grade 3 events	2160	2325	2025	2124	2182	5078
								1%	1%	1%	1%	1%	2%
							grade 4 events	2023	2251	2000	2178	2123	4794
								1%	1%	1%	1%	1%	2%
							grade 5 events	7314	7624	7050	7916	8065	11038
								4%	4%	3%	4%	4%	4%
							grade 6 events	3843	4420	3409	3684	4241	12313
								2%	2%	1%	2%	2%	5%
							grade 7 events	136586	136931	151147	149820	150204	176411
								82%	81%	84%	83%	83%	74%

2.2 Compared Parameters

Parameter	Planned	Actual	Parameter	Planned	Actual
Instrument	ACIS	ACIS	Obspar format version number	7	7
Detector	ACIS-012368	ACIS-012368	Obspar file type	PREDICTED	ACTUAL
Grating	NONE	NONE	Obspar update status	NONE	UPDATED
Data mode	VFAINT	VFAINT	Number of optional ACIS chips dropped	0	0
Observation mode	POINTING	POINTING	On-chip summing requested	N	N
[deg] Pointing RA	26.330269	26.30705808972783	Subarray requested	NONE	NONE
[deg] Pointing Dec	-4.503014	-4.4883638423774	Alternating exposures requested	N	N
[deg] Pointing Roll	117.201792	117.4086341497168	[s] Primary exposure time	0.000000	3.2
[mm] SIM focus pos	-0.782348	-0.7809083437167272			
[mm] SIM defocus	0	0.001439871863259334			
[mm] SIM translation stage pos	-233.592463	-233.5874344608287			
[mm] SIM translation stage offset	0	-0.005018542100998502			
[s] Observation start time (MET)	171477046.184000	171475827.99489			
Observation start date	2003-06-08T16:29:42	2003-06-08T16:10:27			
[s] Observation end time (MET)	171507046.184000	171507572.75874			
Observation end date	2003-06-09T00:49:42	2003-06-09T00:59:32			
Read mode	TIMED	TIMED			

2.3 Aspect



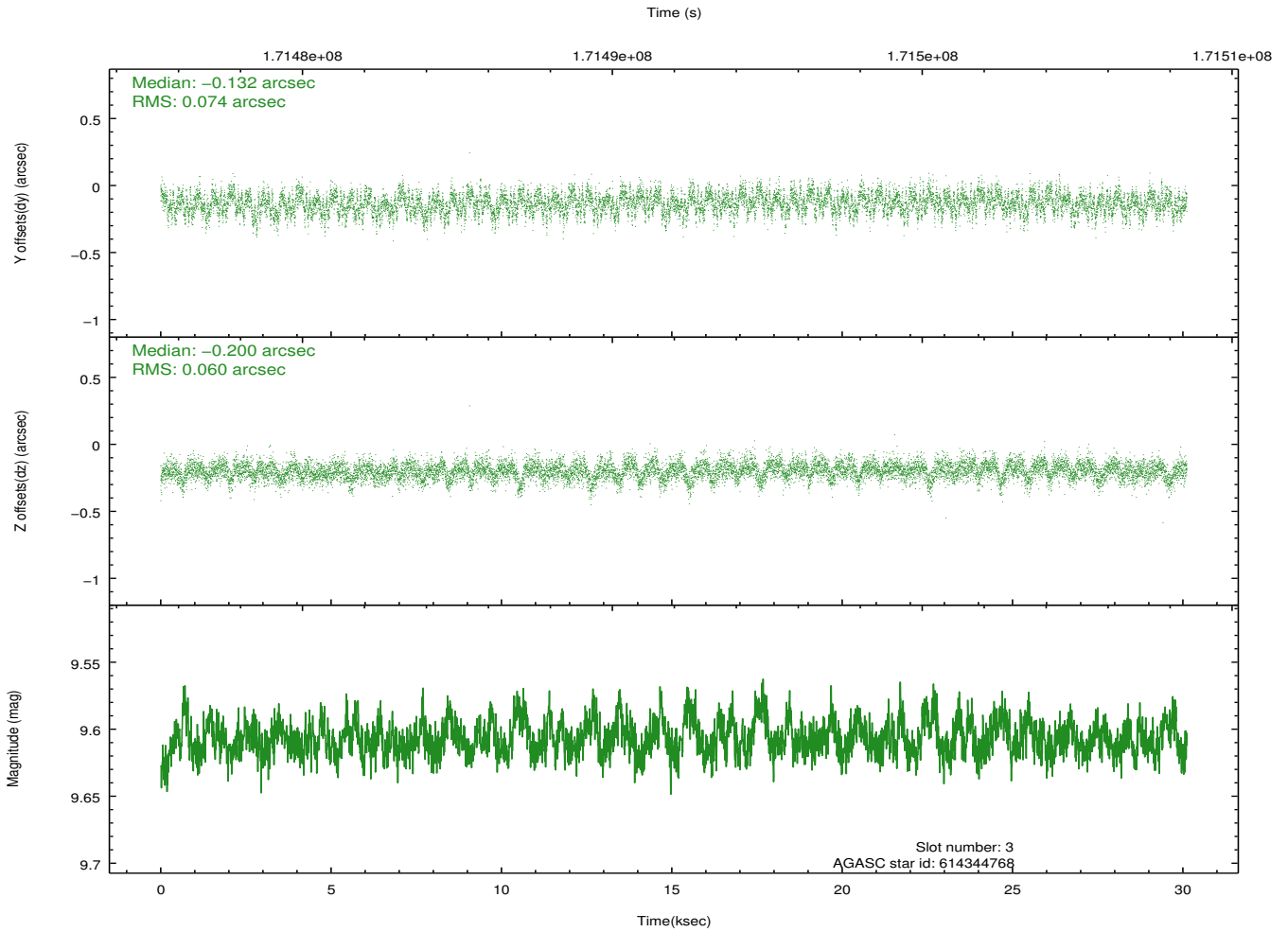
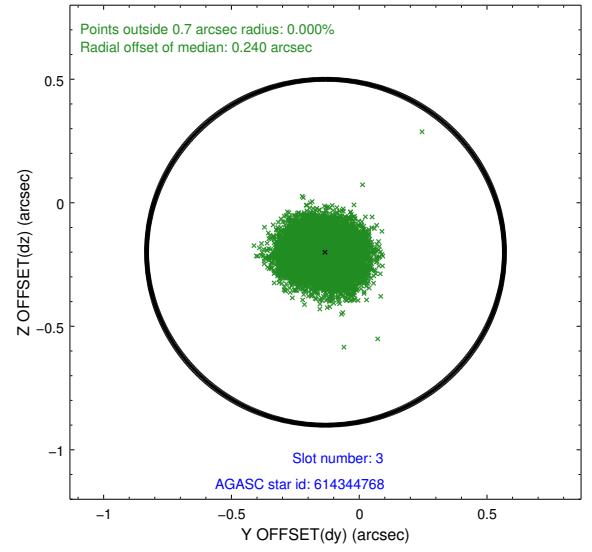
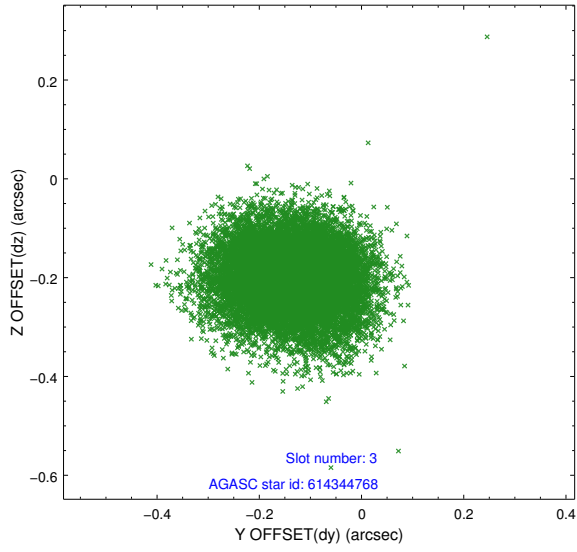


Slot Statistics

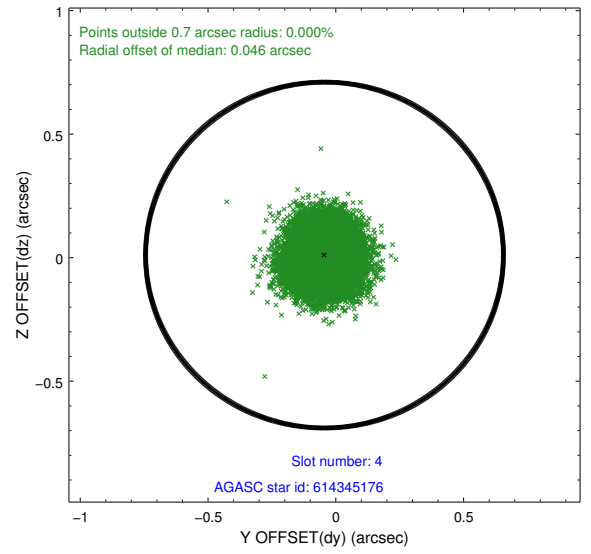
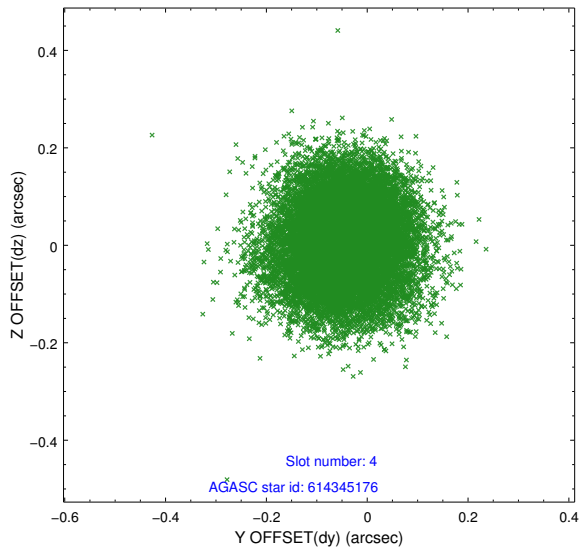
slot	status	id	mag	n_pts	med_dy	med_dz	dr1	dr2	ra	dec	mean_y	mean_z
0	FID	ACIS-I-1	7.24	7347	-0.032	0.071	0.016	0.025	0.000000	0.000000	934.75	-832.85
1	FID	ACIS-I-2	7.15	7345	-0.089	-0.038	0.015	0.022	0.000000	0.000000	-759.36	-839.45
2	FID	ACIS-I-4	7.18	7346	0.023	0.029	0.024	0.036	0.000000	0.000000	2154.64	1066.89
3	GUIDE	614344768	9.61	14685	-0.132	-0.200	0.102	0.165	25.572186	-4.331089	1793.12	2137.97
4	GUIDE	614345176	9.73	14681	-0.044	0.011	0.113	0.180	25.877982	-4.292809	1414.93	1098.39
5	GUIDE	614345376	9.28	14688	-0.162	-0.112	0.085	0.135	25.702118	-4.344424	1537.63	1744.98
6	GUIDE	614482496	8.04	14693	0.041	0.135	0.056	0.093	26.490453	-4.228669	615.58	-962.54
7	GUIDE	614483944	10.03	14681	0.299	0.168	0.131	0.211	26.708180	-4.967254	-2105.95	-441.27

2.4 Star Slots

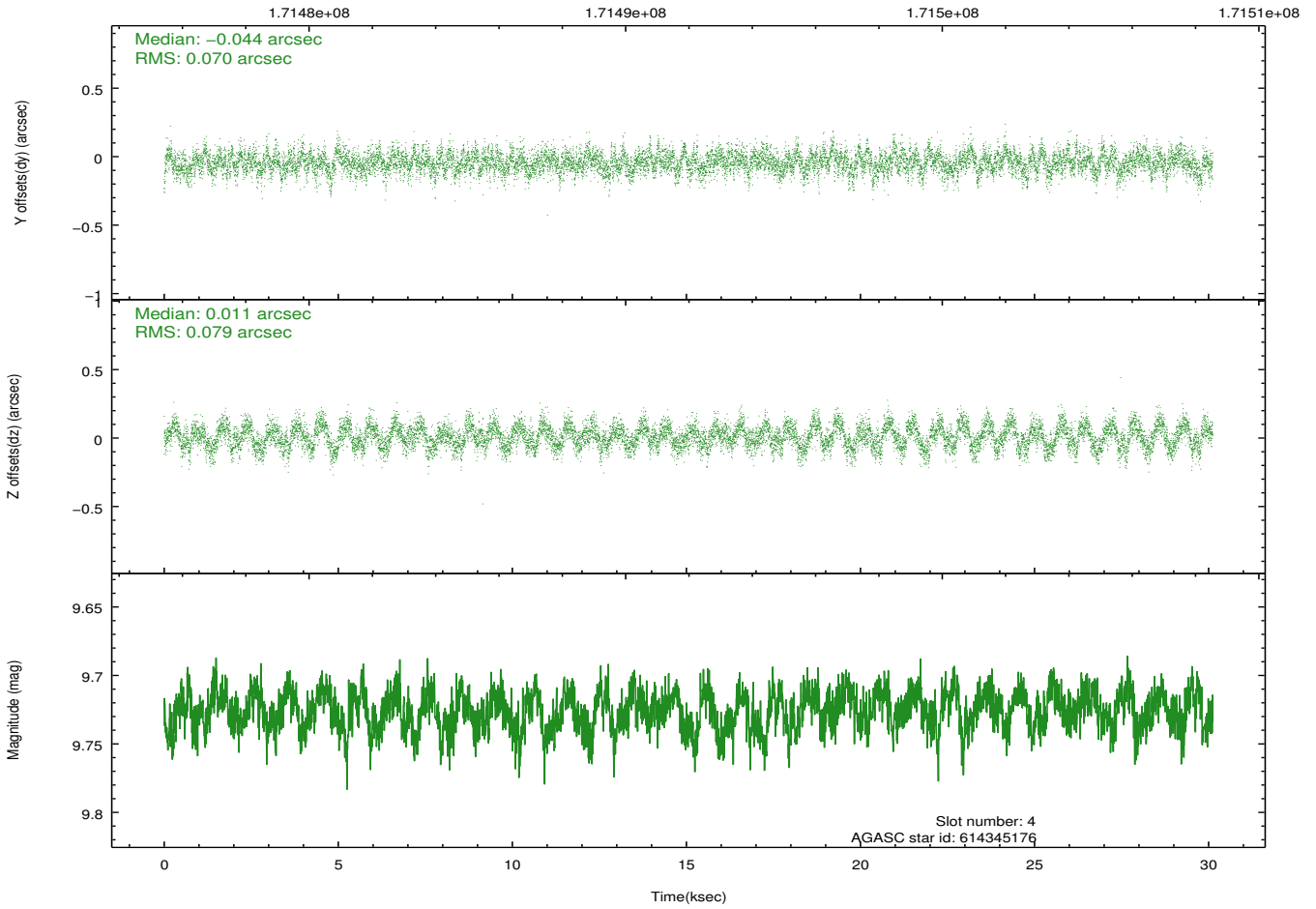
2.4.1 Slot 3



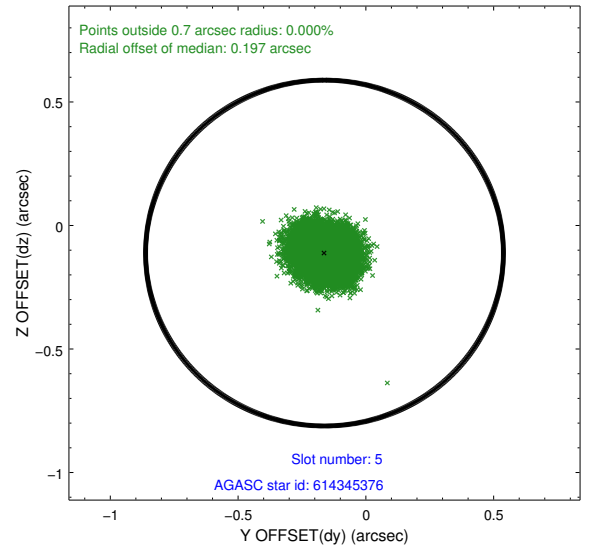
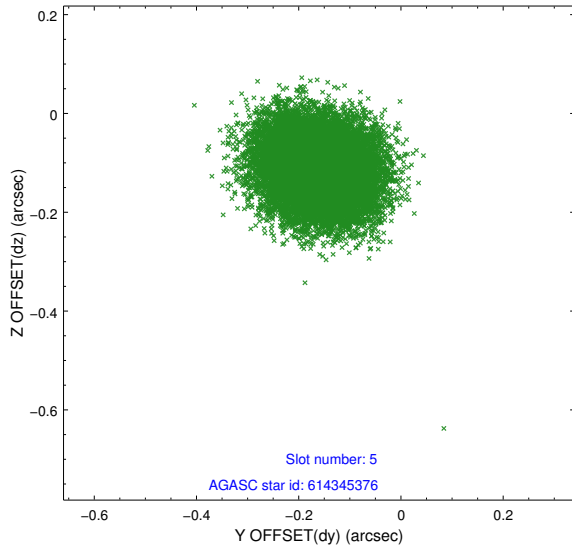
2.4.2 Slot 4



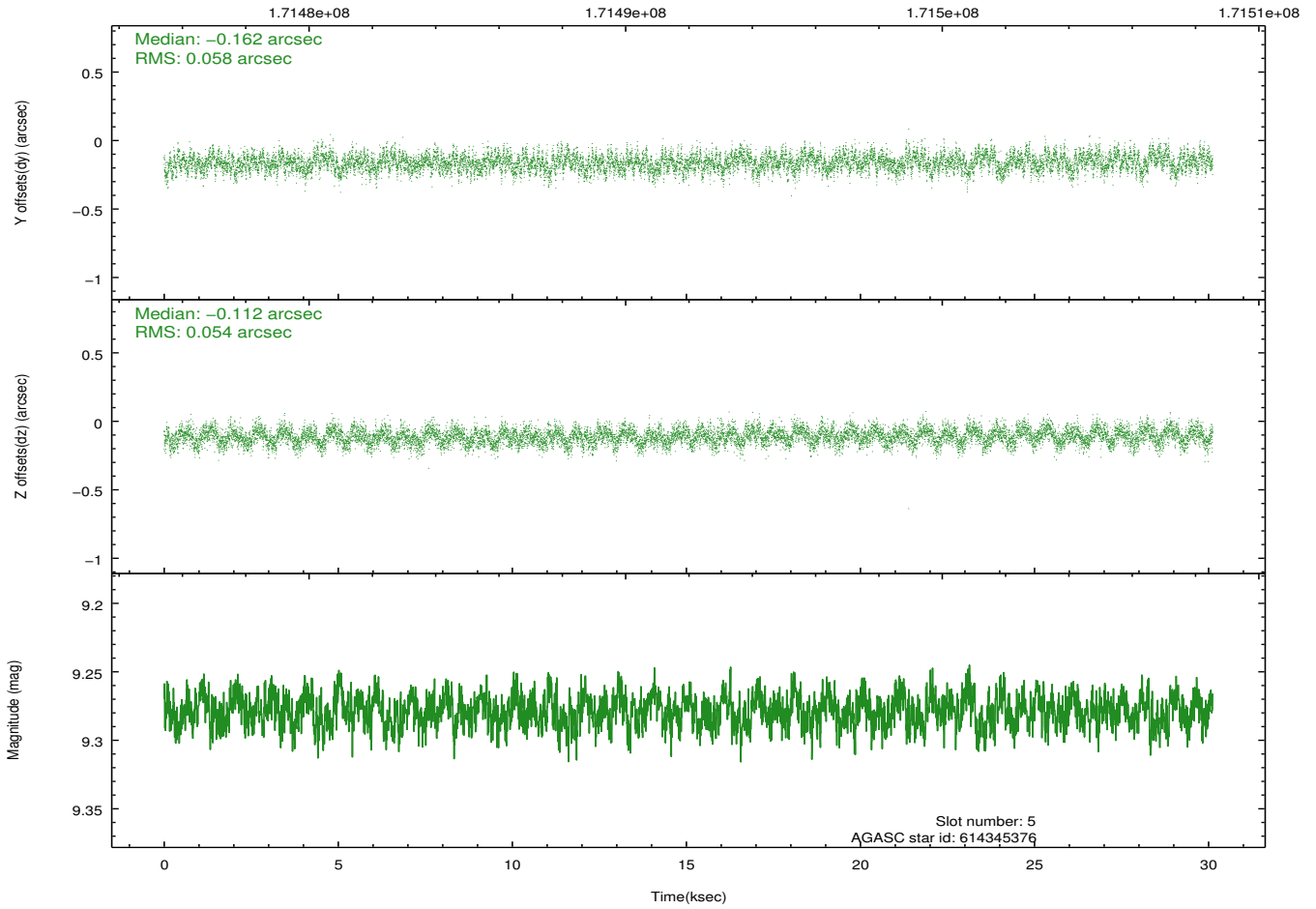
Time (s)



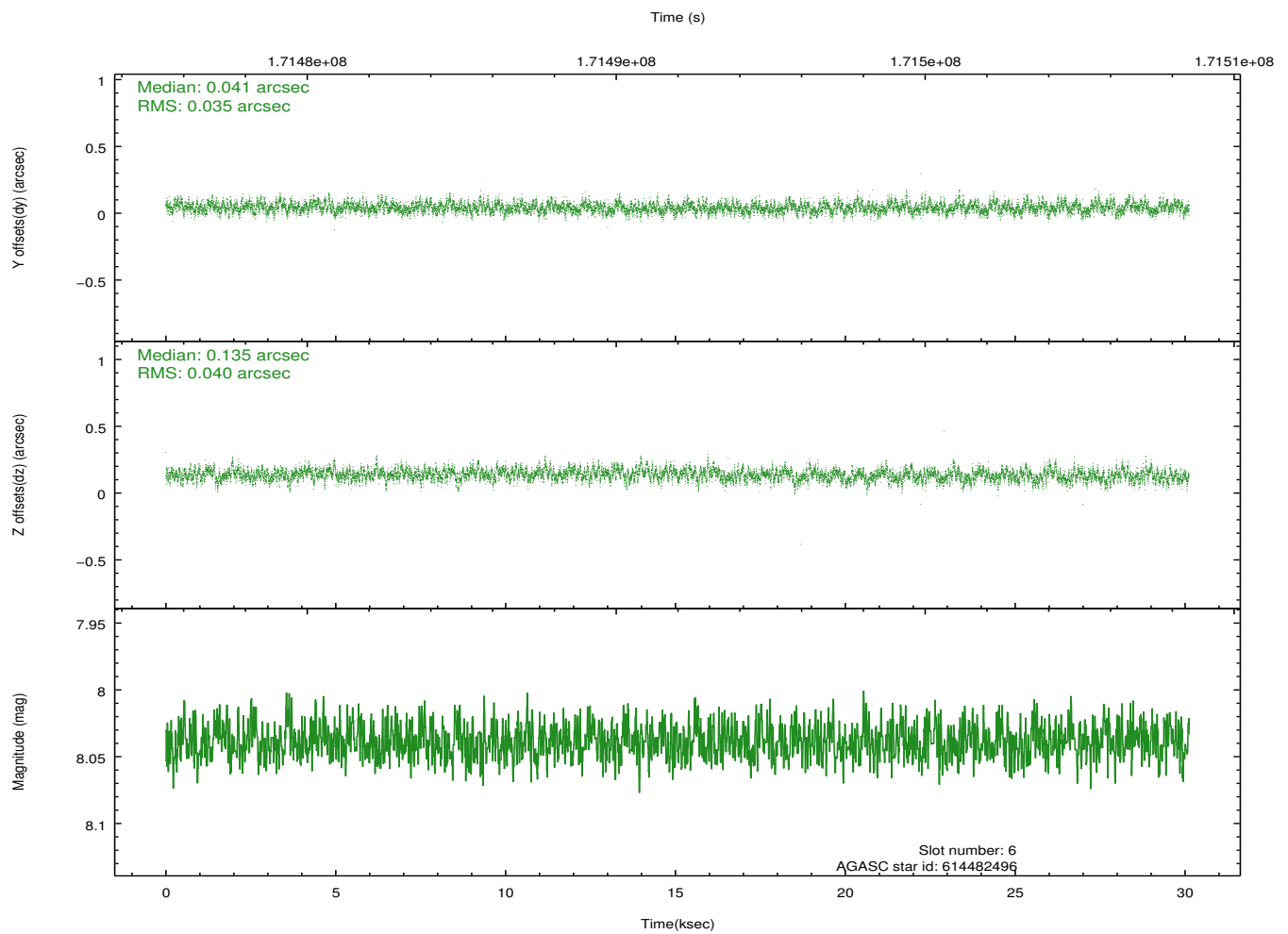
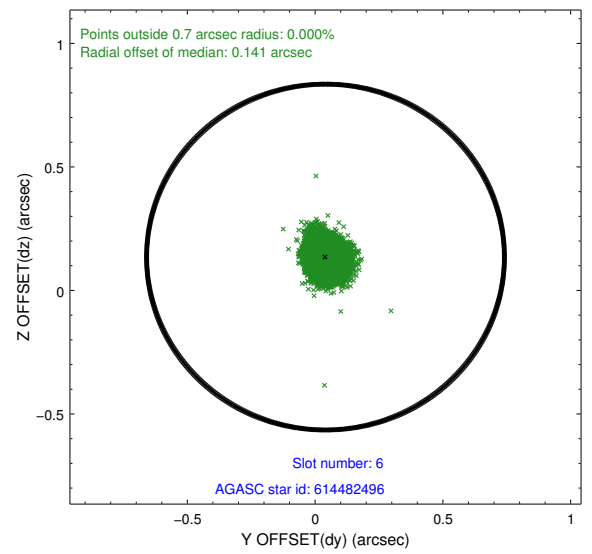
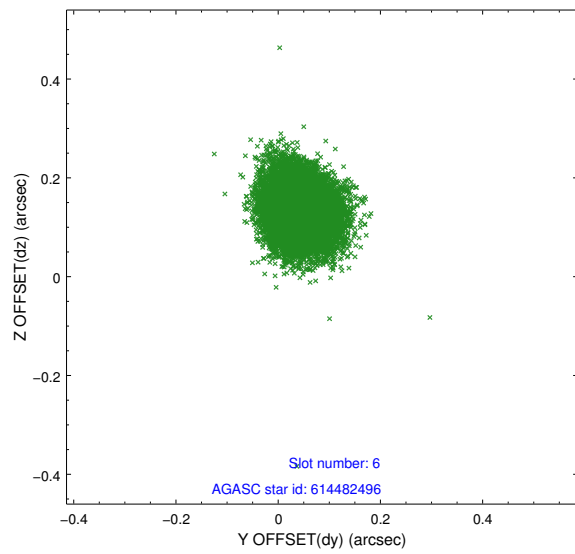
2.4.3 Slot 5



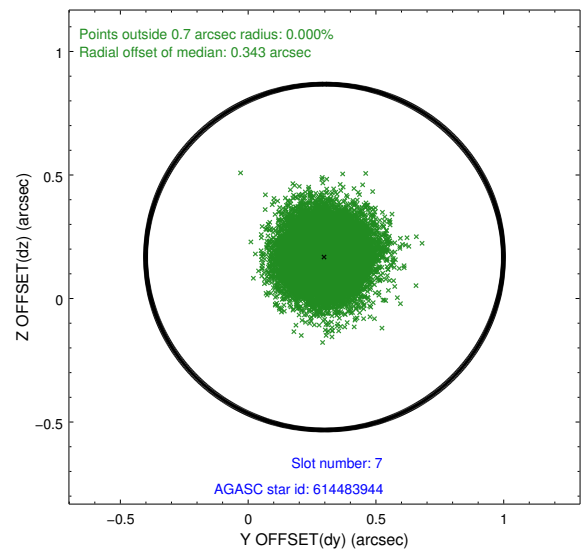
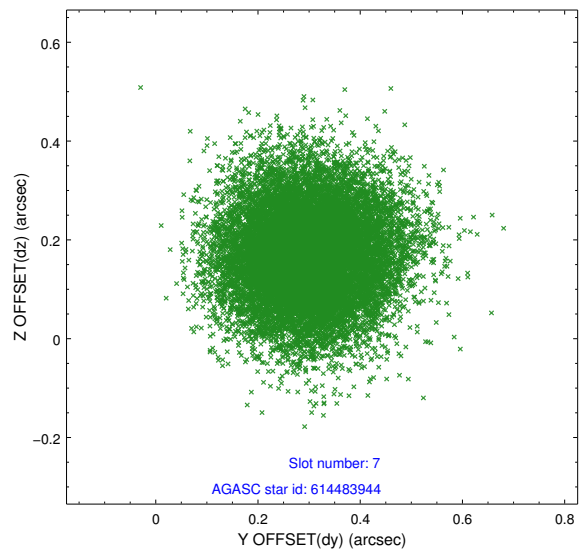
Time (s)



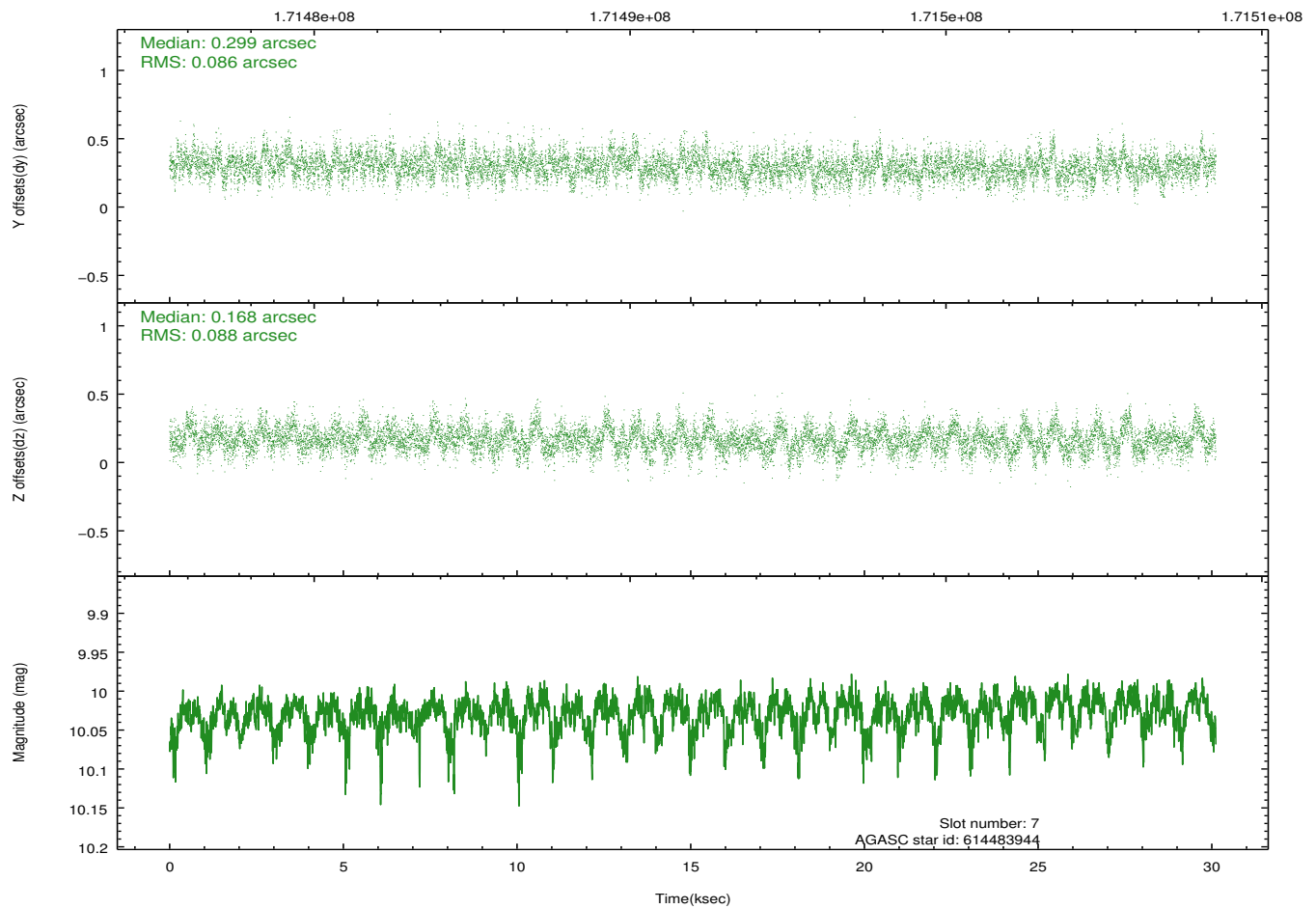
2.4.4 Slot 6



2.4.5 Slot 7

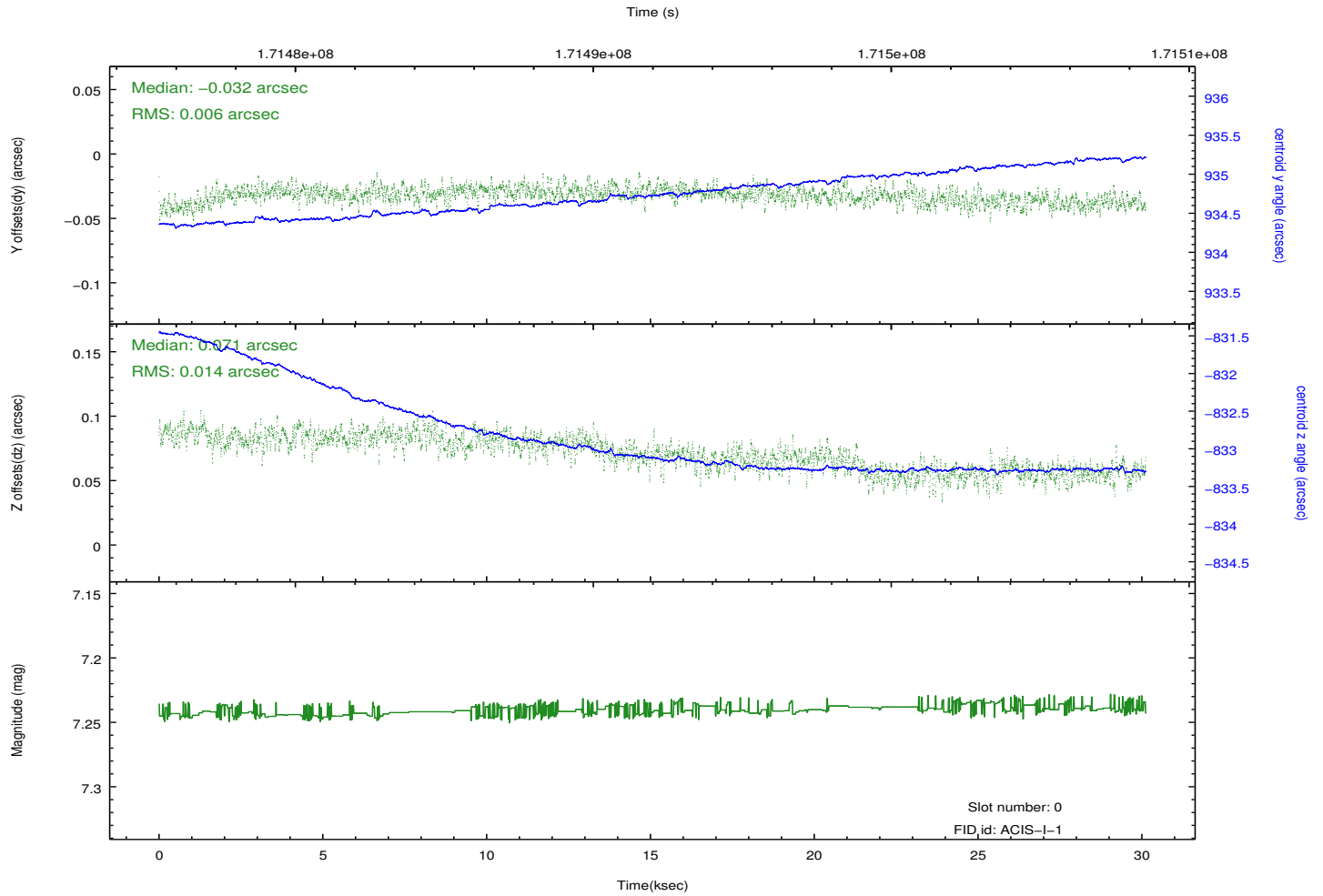
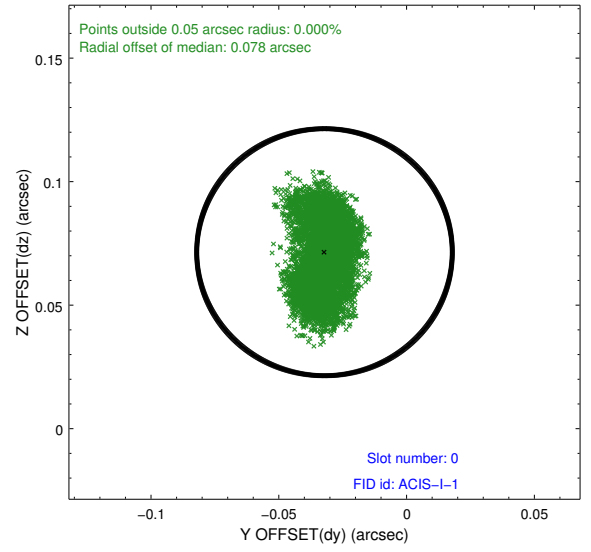
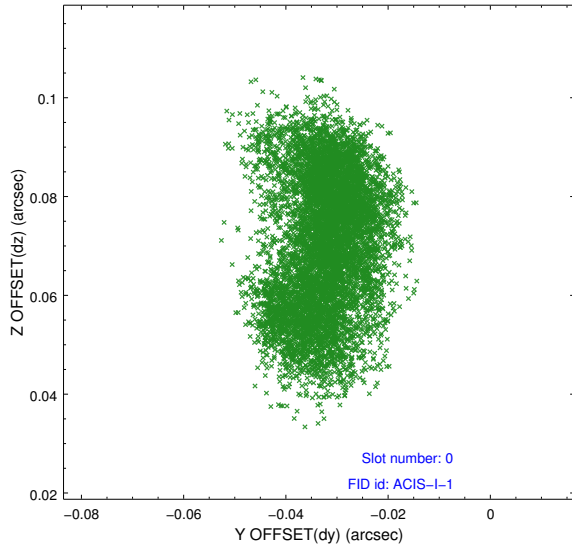


Time (s)

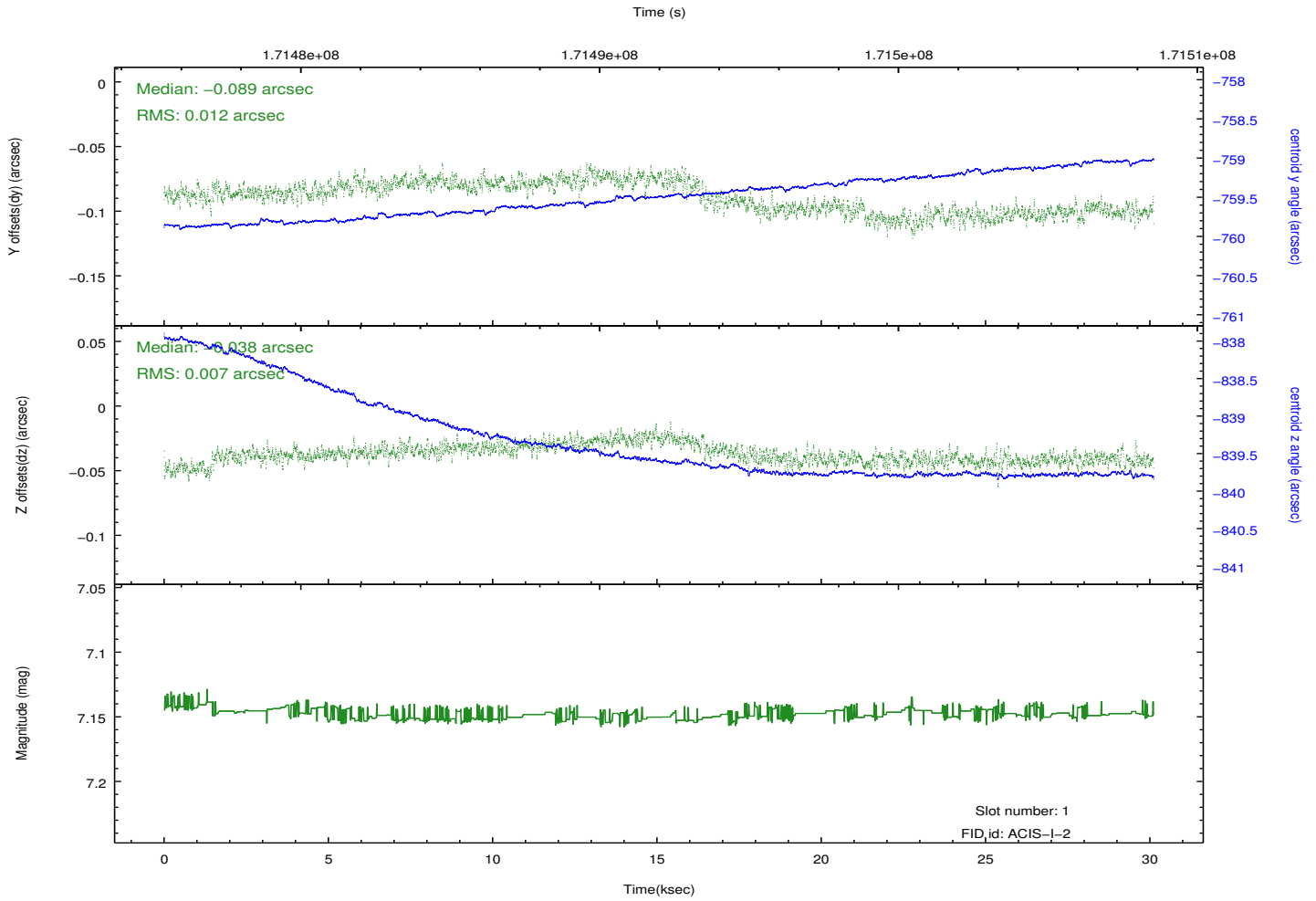
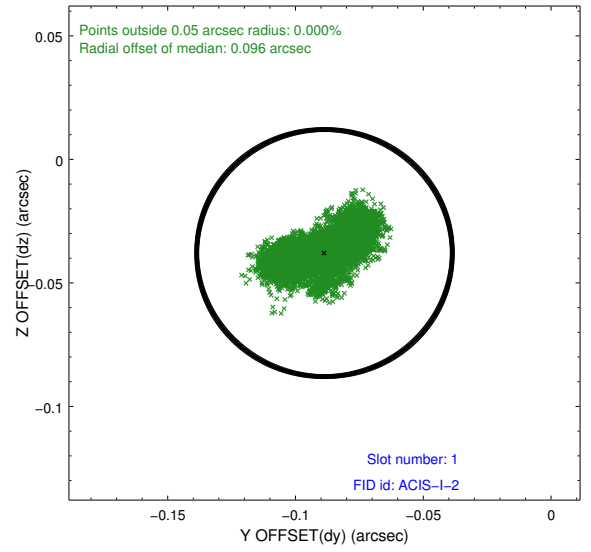
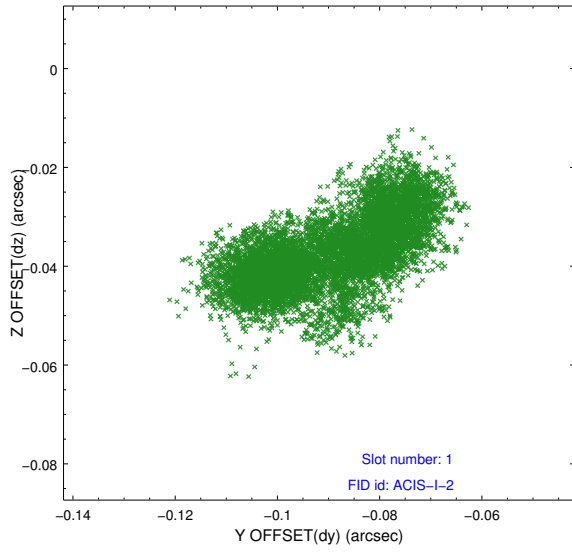


2.5 FID Slots

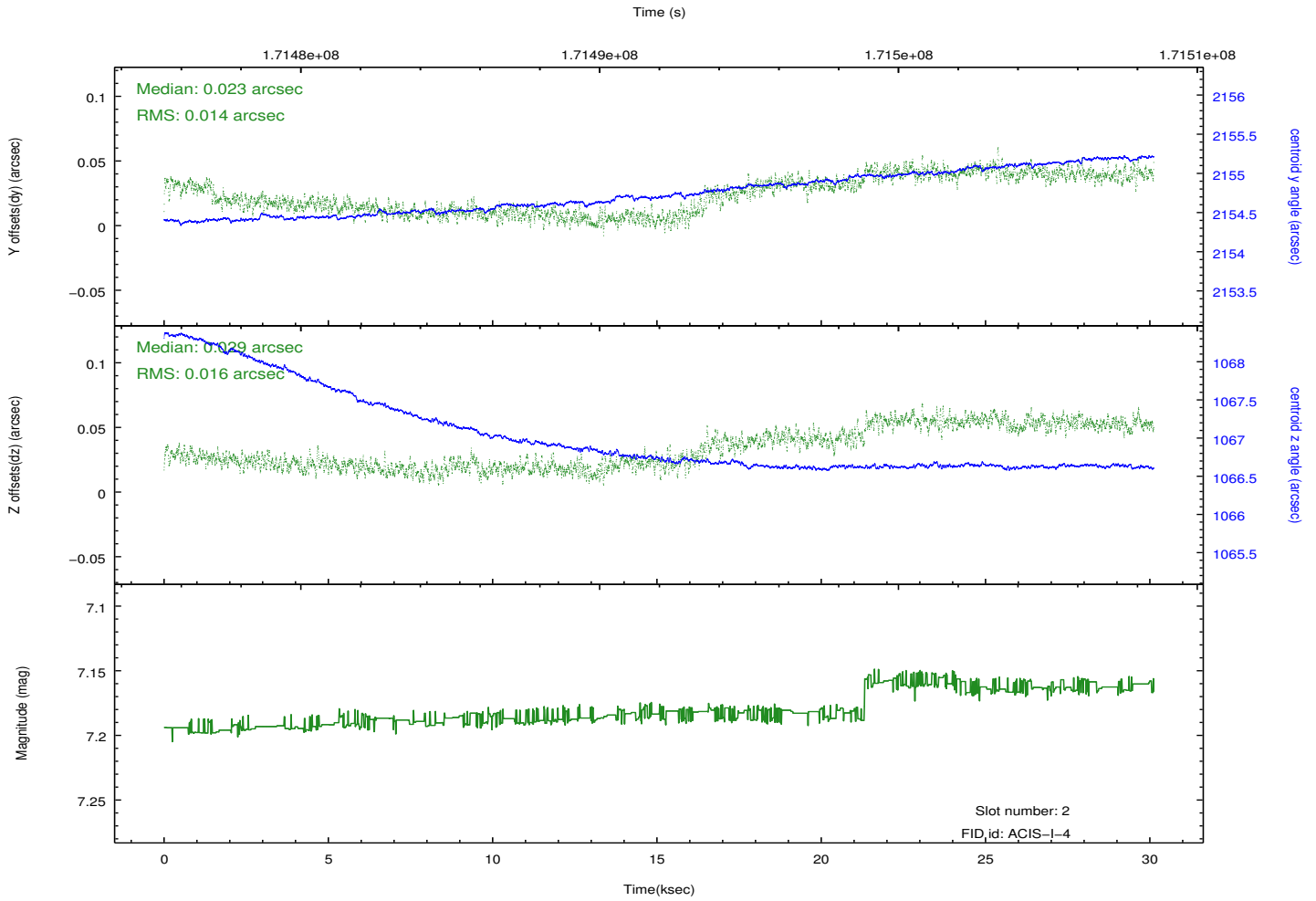
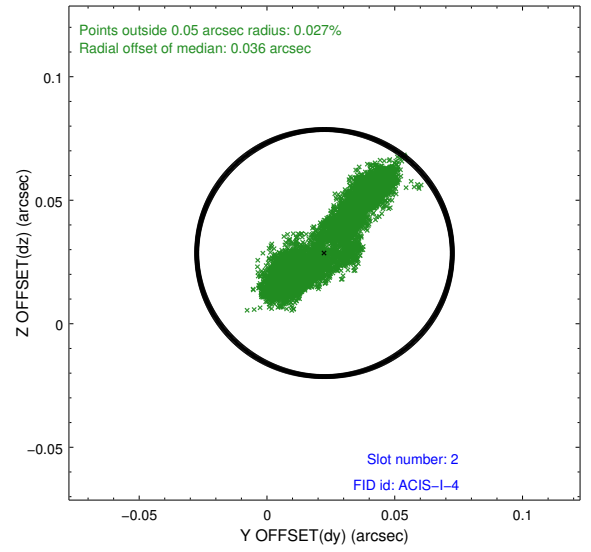
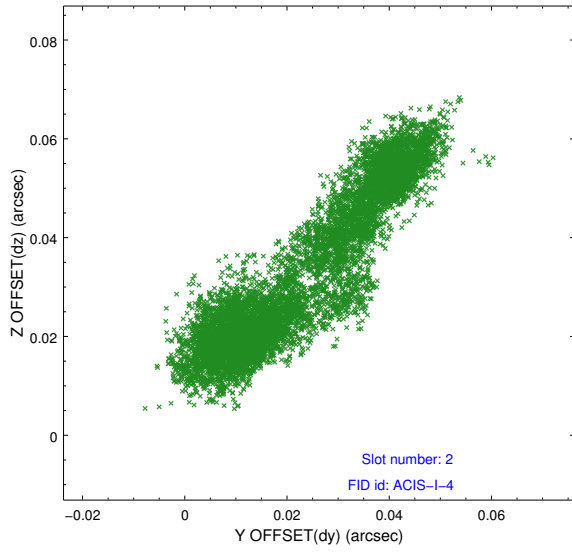
2.5.1 Slot 0



2.5.2 Slot 1



2.5.3 Slot 2



A Summary

A.1 Status

V&V Scientist	Jen Lauer
V&V Date (YYYY-MM-DD)	2012.11.15
V&V Edition	1
V&V Disposition and Status	OK
V&V Charge Time	30.111

A.2 Comments

Roll preference met.