

# V&V Reference Report

## L2 ASCDS Version : 7.6.8

Observation 4455 - L2 Version 001  
Chandra X-Ray Center

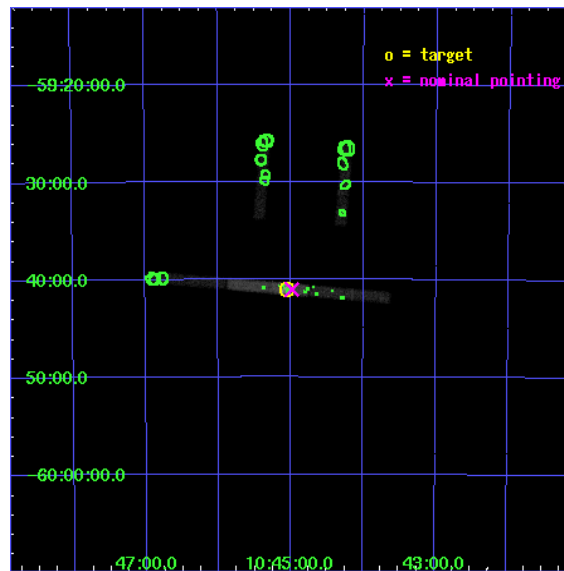
L2 Processing Date : Jul 7 2006

## Contents

<b>1</b>	<b>Front</b>	<b>2</b>
<b>2</b>	<b>OBI</b>	<b>3</b>
2.1	OBI . . . . .	3
2.1.1	Images . . . . .	3
2.1.2	Bias . . . . .	3
2.1.3	Parameters . . . . .	4
2.1.4	Events . . . . .	4
2.2	Compared Parameters . . . . .	5
2.3	Aspect . . . . .	6
2.4	Star Slots . . . . .	9
2.4.1	Slot 3 . . . . .	9
2.4.2	Slot 4 . . . . .	10
2.4.3	Slot 5 . . . . .	11
2.4.4	Slot 6 . . . . .	12
2.4.5	Slot 7 . . . . .	13
2.5	FID Slots . . . . .	14
2.5.1	Slot 0 . . . . .	14
2.5.2	Slot 1 . . . . .	15
2.5.3	Slot 2 . . . . .	16
<b>3</b>	<b>Point Sources</b>	<b>17</b>
<b>A</b>	<b>Summary</b>	<b>18</b>
A.1	Status . . . . .	18
A.2	Comments . . . . .	18

# 1 Front

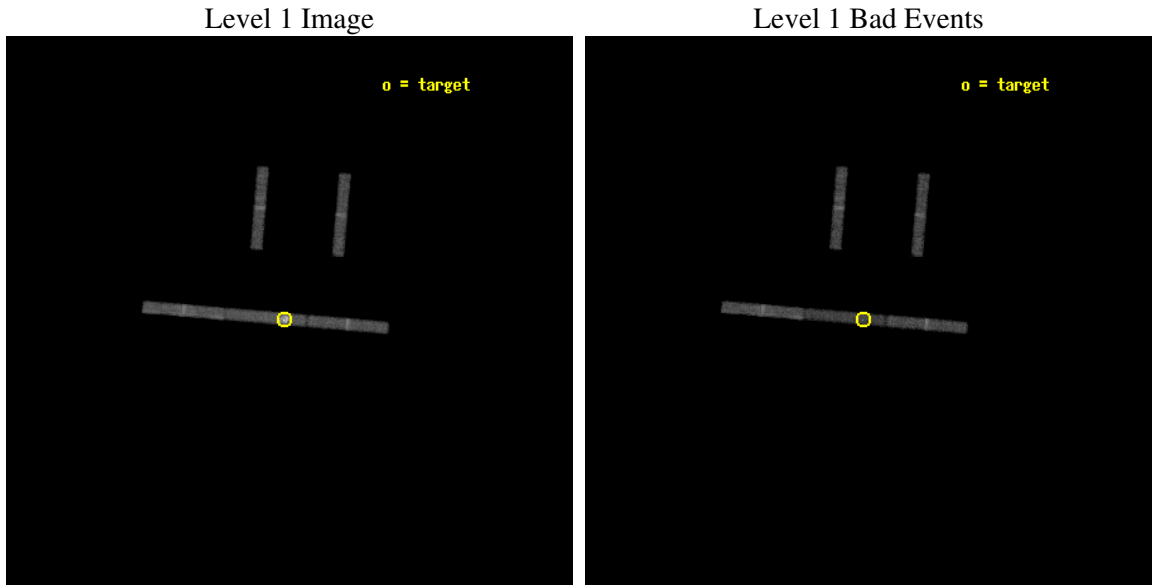
seq_num	200237
obs_id	4455
title	UNVEILING ETA CAR: CHANDRA OBSERVATIONS DURING THE 2003.5 EVENT
observer	Dr Michael Corcoran
object	Eta Car
dtcycle	0
cycle	P
ra_targ	161.265
dec_targ	-59.684528
ra_nom	161.24595541647
dec_nom	-59.68364278301
roll_nom	184.85406657948
revision	2
ontime	19898.199661136
livetime	18796.205012948
ontime2	19898.199661136
ontime3	19898.199661136
ontime6	19898.199661136
ontime7	19898.199661136
ontime8	19898.199661136
l2events	42721



## 2 OBI

### 2.1 OBI

#### 2.1.1 Images



#### 2.1.2 Bias

Chip 2

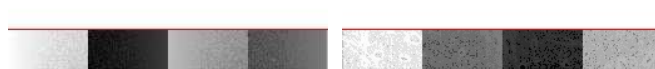
Chip 3

Chip 6



Chip 7

Chip 8



### 2.1.3 Parameters

obi_num	0
ascdsver	7.6.8
caldbver	3.2.2
date	2006-07-07T18:57:22
revision	2

sched_exp_time	19746.000000
ontime	20385.767242342
ontime2	20386.508282334
ontime3	20385.767242342
ontime6	20385.767242342
ontime7	20385.767242342
ontime8	20386.508282334
l1events	147607

### 2.1.4 Events

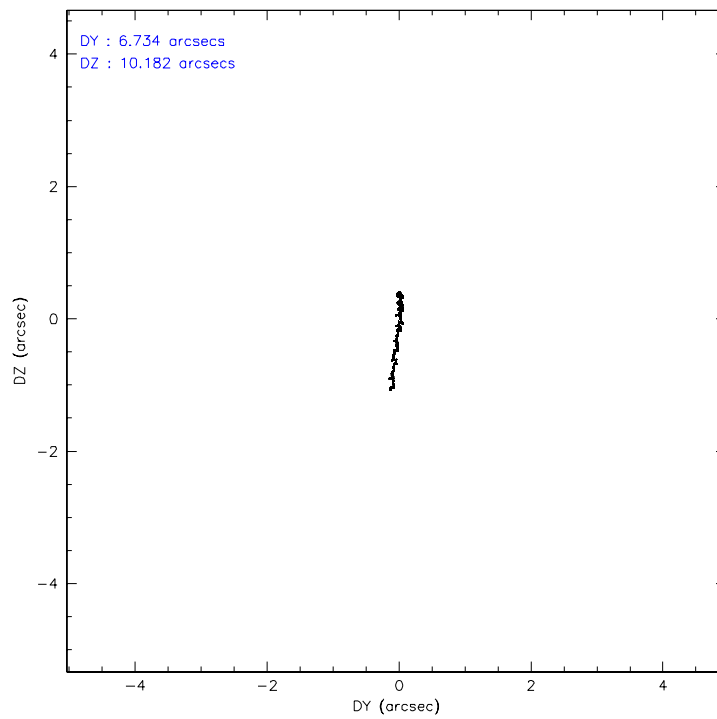
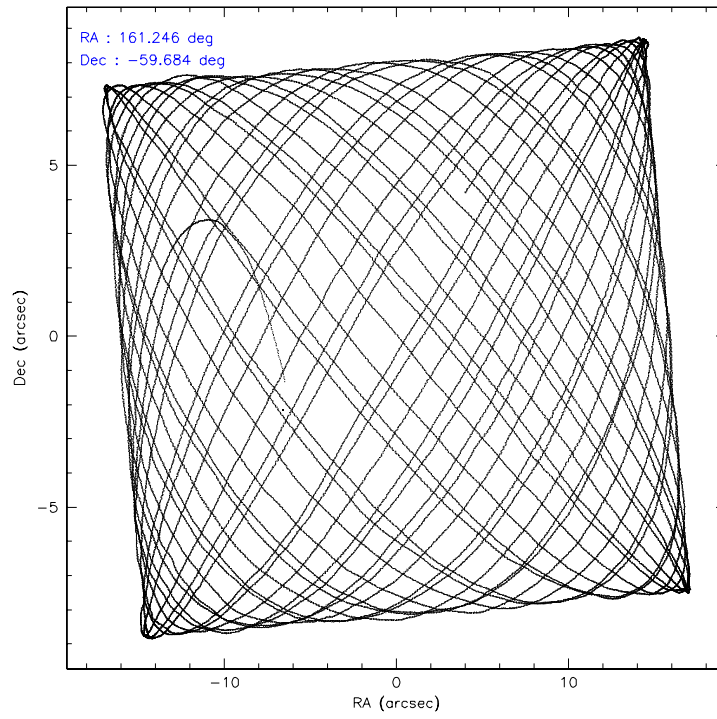
	ccd 2	ccd 3	ccd 6	ccd 7	ccd 8
level 1 events	21379	22086	26077	46370	31695
rejected events	18145	19389	20799	15108	25861
rejected %	84%	87%	79%	32%	81%

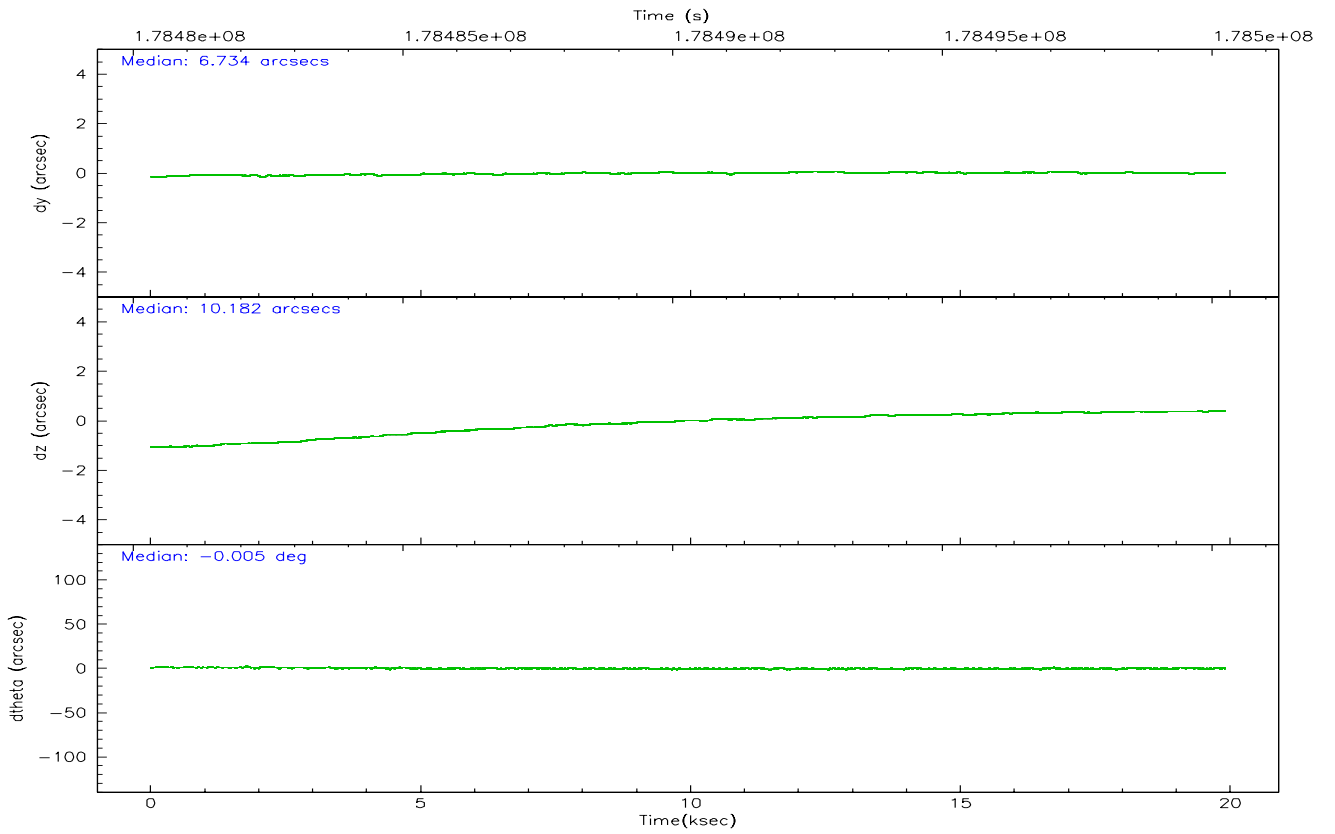
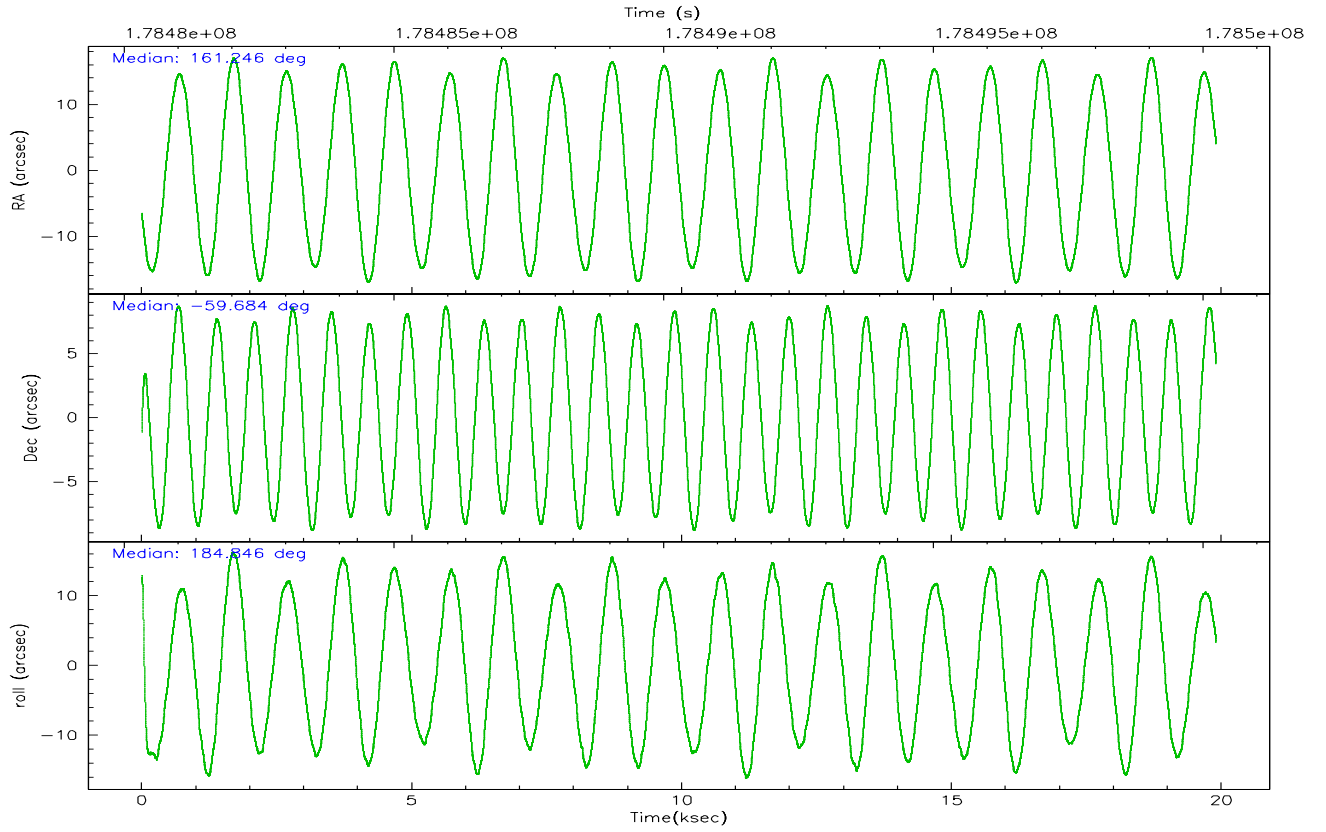
	ccd 2	ccd 3	ccd 6	ccd 7	ccd 8
grade 0 events	1671	1216	3348	7444	1975
	7%	5%	12%	16%	6%
grade 1 events	5	6	11	31	4
	0%	0%	0%	0%	0%
grade 2 events	447	427	611	8186	1106
	2%	1%	2%	17%	3%
grade 3 events	405	372	468	3453	579
	1%	1%	1%	7%	1%
grade 4 events	448	351	453	3202	610
	2%	1%	1%	6%	1%
grade 5 events	591	708	768	1838	928
	2%	3%	2%	3%	2%
grade 6 events	322	383	490	9351	1651
	1%	1%	1%	20%	5%
grade 7 events	17490	18623	19928	12865	24842
	81%	84%	76%	27%	78%

## 2.2 Compared Parameters

Parameter	Planned	Actual	Parameter	Planned	Actual
Instrument	ACIS	ACIS	Obspar format version number	6	6
Detector	ACIS-23678	ACIS-23678	Obspar file type	PREDICTED	ACTUAL
Grating	NONE	NONE	Obspar update status	NONE	UPDATED
Data mode	FAINT	FAINT	On-chip summing requested	N	N
Observation mode	POINTING	POINTING	Subarray requested	1/8	1/8
Pointing RA	161.289748	161.2459554164666	Subarray start row	0	449
Pointing Dec	-59.667771	-59.68364278301023	Subarray row count	1024	128
Pointing Roll	184.735229	184.8540665794762	Alternating exposures requested	N	N
Window start time	177984064.184000	177984064.184000	Primary exposure time	0.000000	0.7
Window stop time	178675264.184000	178675264.184000			
SIM focus pos (mm)	-0.684267	-0.6828225247311905			
SIM defocus (mm)	0	0.001444936568705701			
SIM translation stage pos (mm)	-190.132523	-190.1400660498719			
SIM translation stage offset (mm)	0	0.00754346686406393			
Observation start time	178480497.184000	178479488.26842			
Observation start date	2003-08-28T17:53:53	2003-08-28T17:38:08			
Observation end time	178500243.184000	178501478.10686			
Observation end date	2003-08-28T23:22:59	2003-08-28T23:44:38			
Read mode	TIMED	TIMED			

## 2.3 Aspect



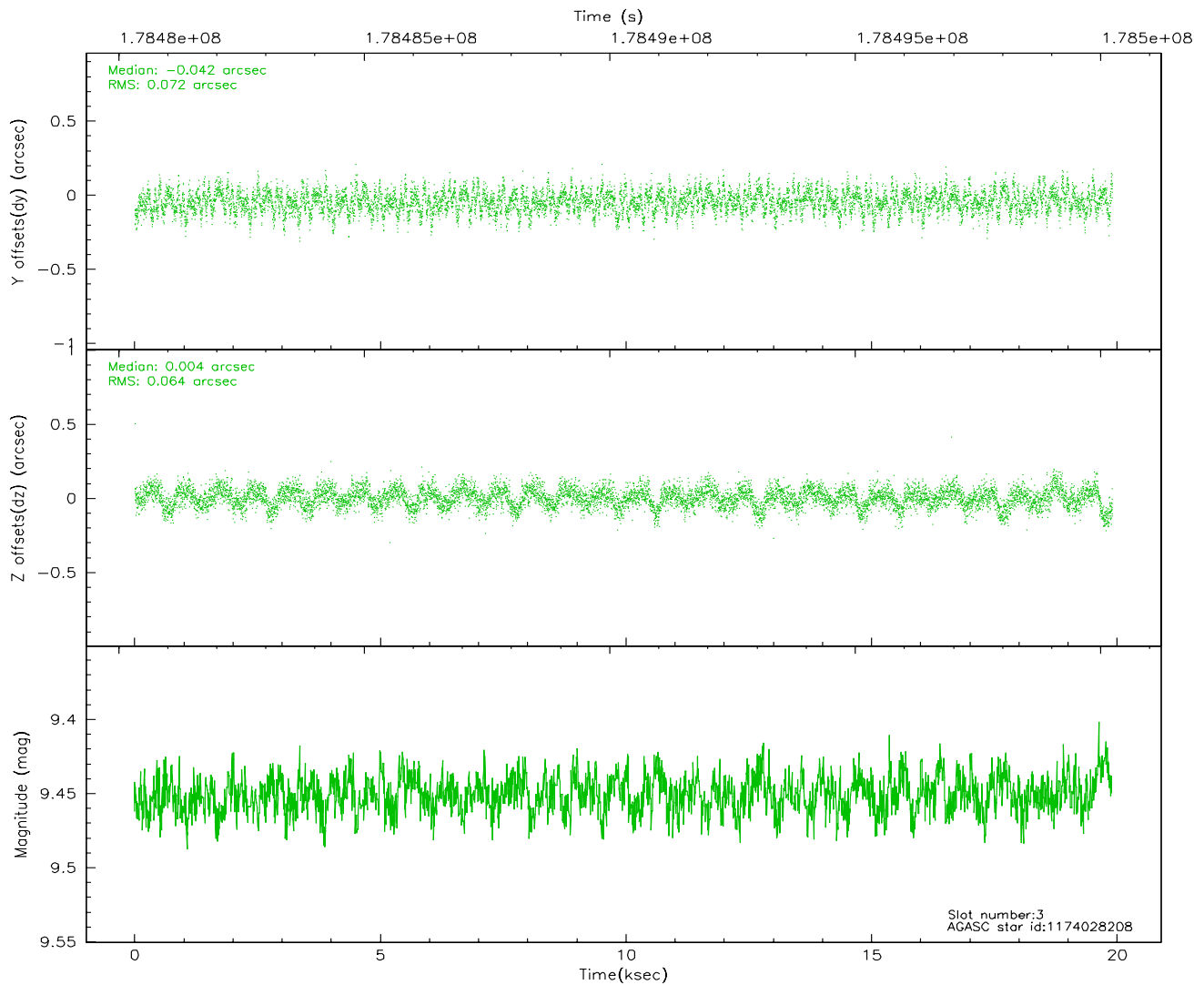
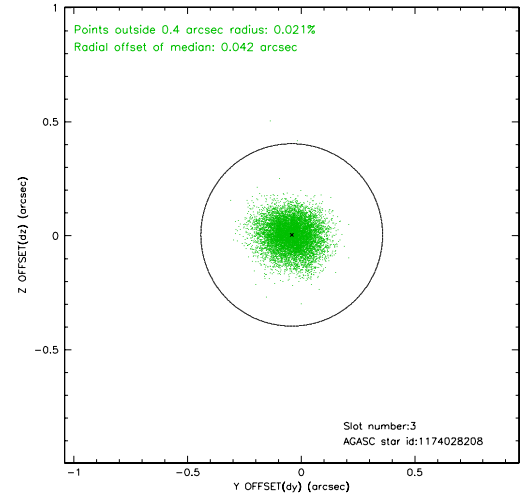
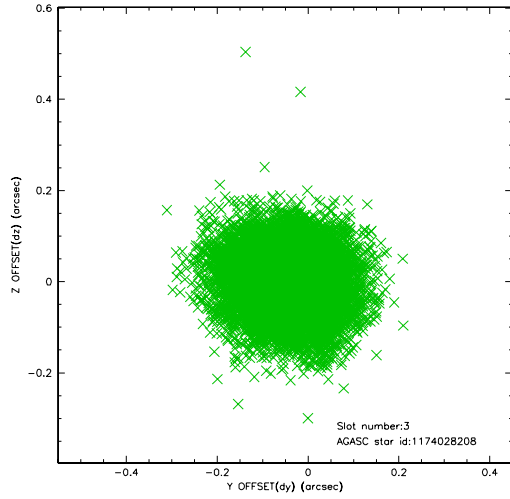


### Slot Statistics

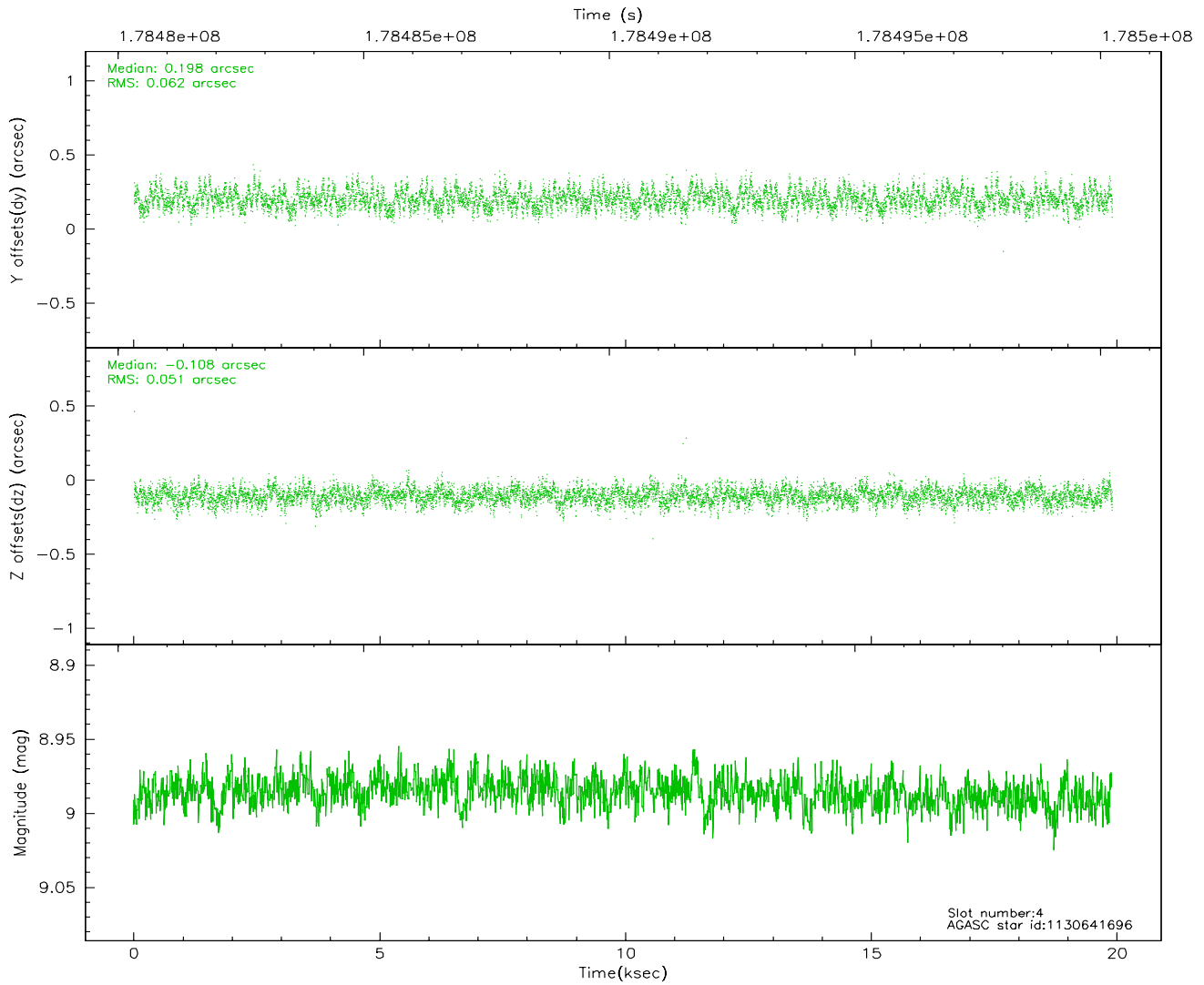
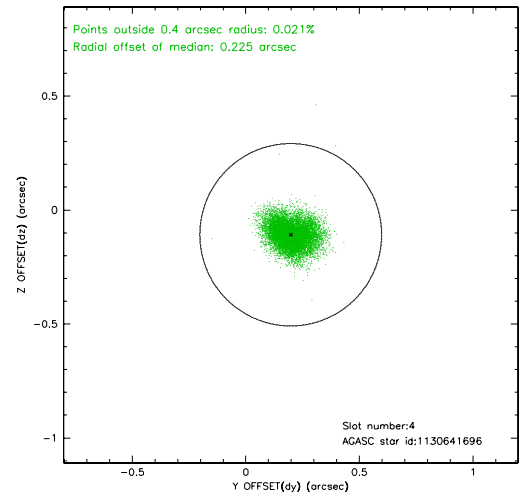
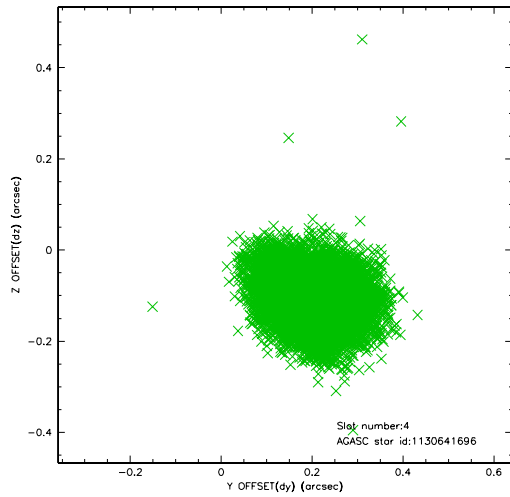
slot	status	id	mag	n_pts	med_dy	med_dz	dr1	dr2	ra	dec	mean_y	mean_z
0	FID	ACIS-S-2	7.10	4855	-0.039	-0.015	0.007	0.013	0.000000	0.000000	-759.47	-1731.31
1	FID	ACIS-S-4	7.20	4854	0.030	0.024	0.009	0.014	0.000000	0.000000	2153.76	177.05
2	FID	ACIS-S-6	7.34	4855	-0.019	-0.002	0.011	0.020	0.000000	0.000000	402.74	814.61
3	GUIDE	1174028208	9.45	9704	-0.042	0.004	0.103	0.166	162.376261	-60.088788	-1817.47	1687.46
4	GUIDE	1130641696	8.99	9702	0.198	-0.108	0.085	0.136	160.302677	-59.152466	1664.27	-1985.20
5	GUIDE	1130644032	8.85	9707	-0.064	-0.031	0.072	0.116	160.377001	-59.073783	1508.02	-2258.74
6	GUIDE	1130645296	9.06	9703	-0.063	0.062	0.082	0.132	162.541185	-59.548371	-2308.77	-218.72
7	GUIDE	1174027824	9.15	9702	-0.032	0.077	0.097	0.155	161.465908	-60.192420	-158.52	1908.95

## 2.4 Star Slots

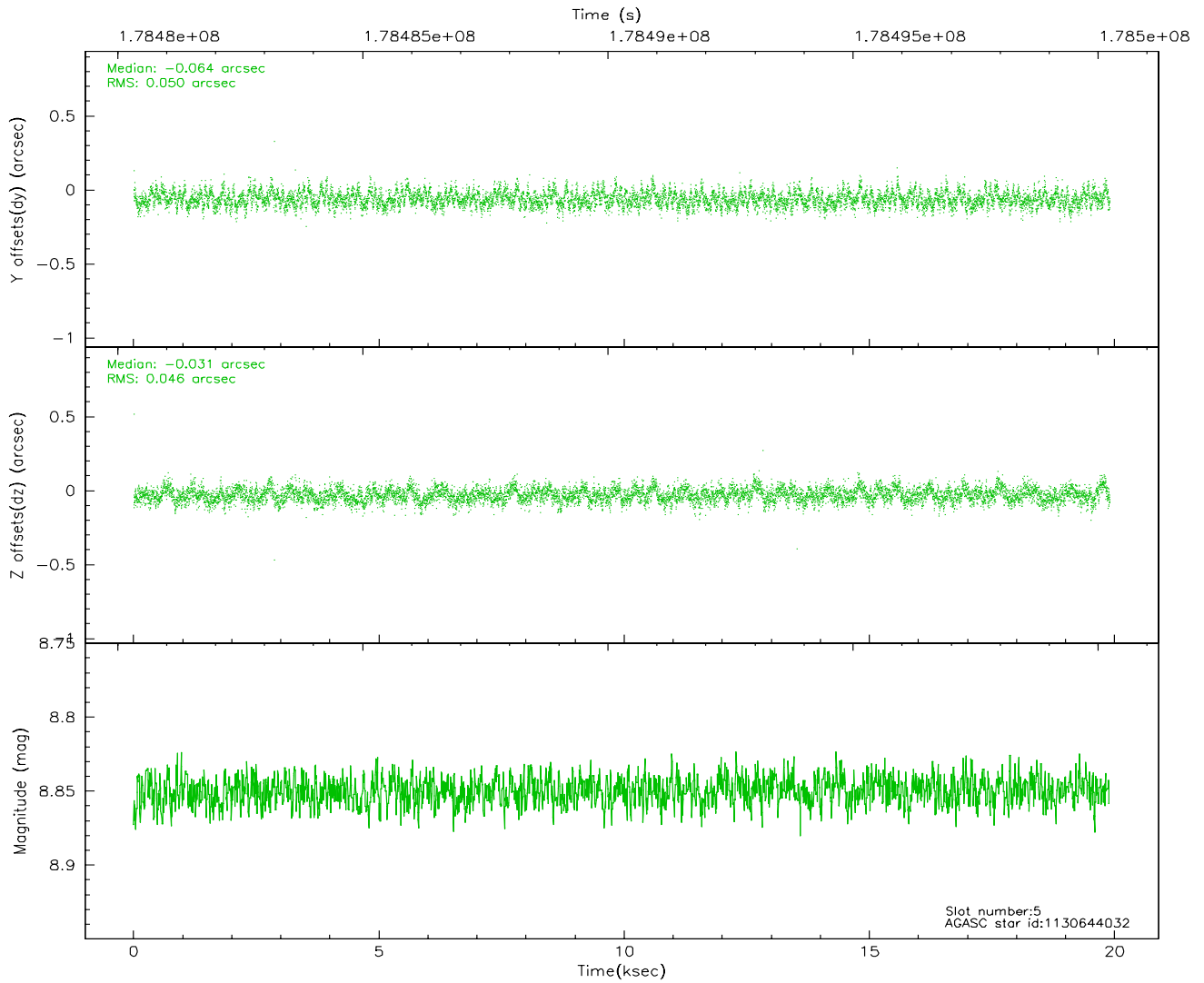
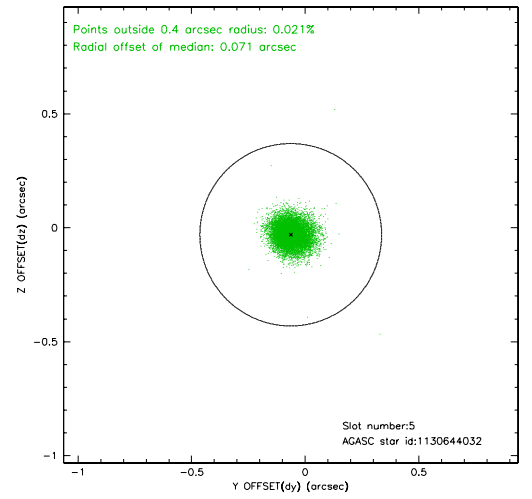
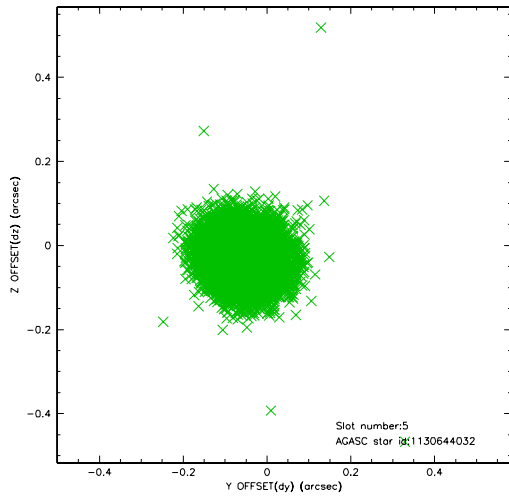
### 2.4.1 Slot 3



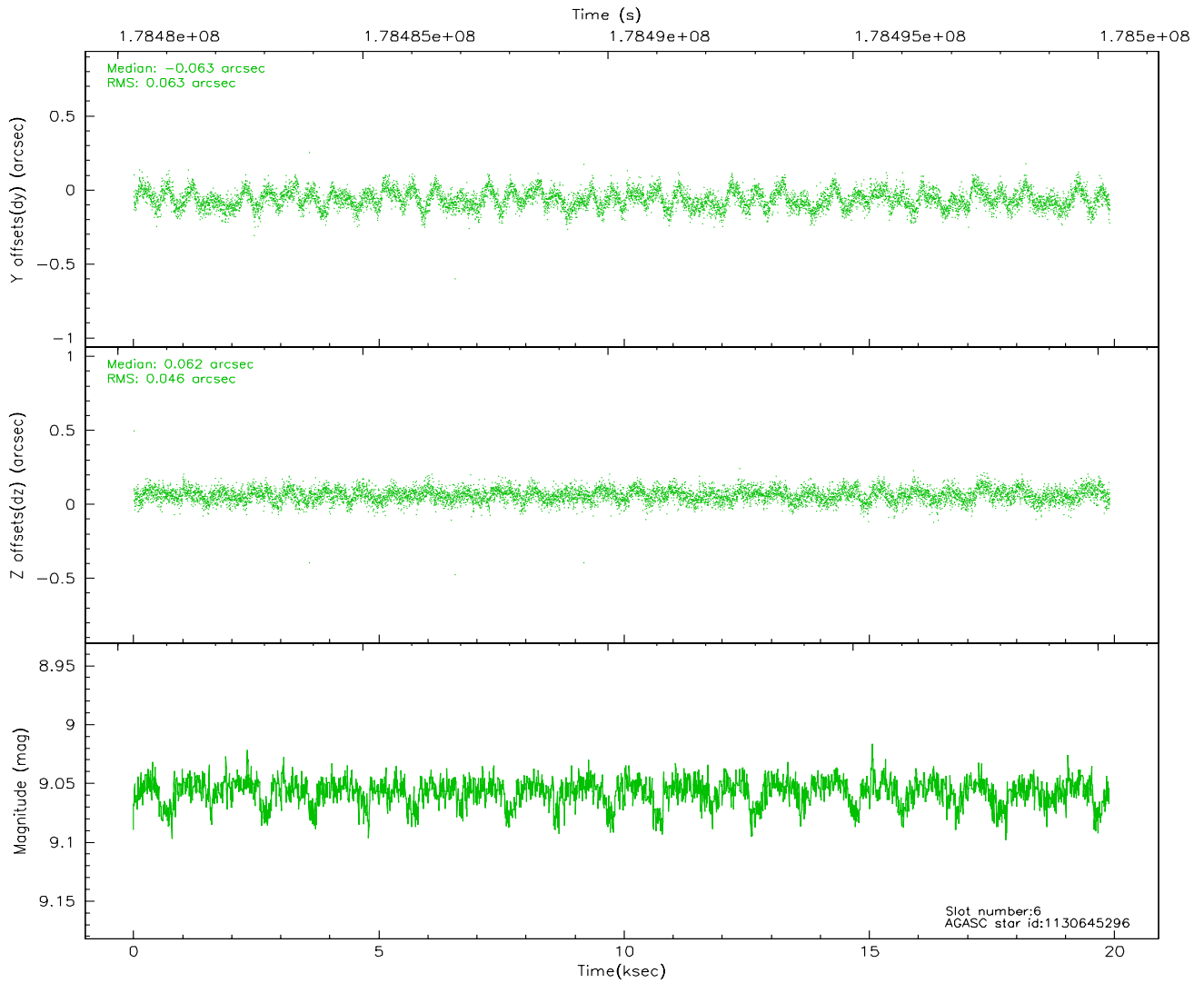
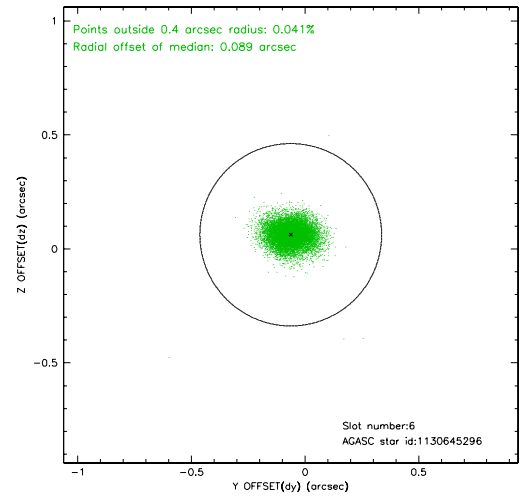
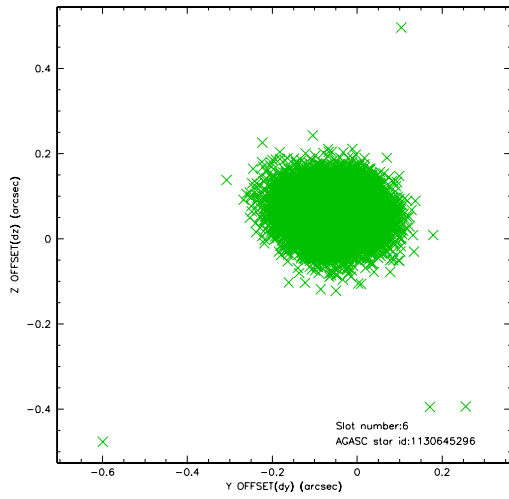
### 2.4.2 Slot 4



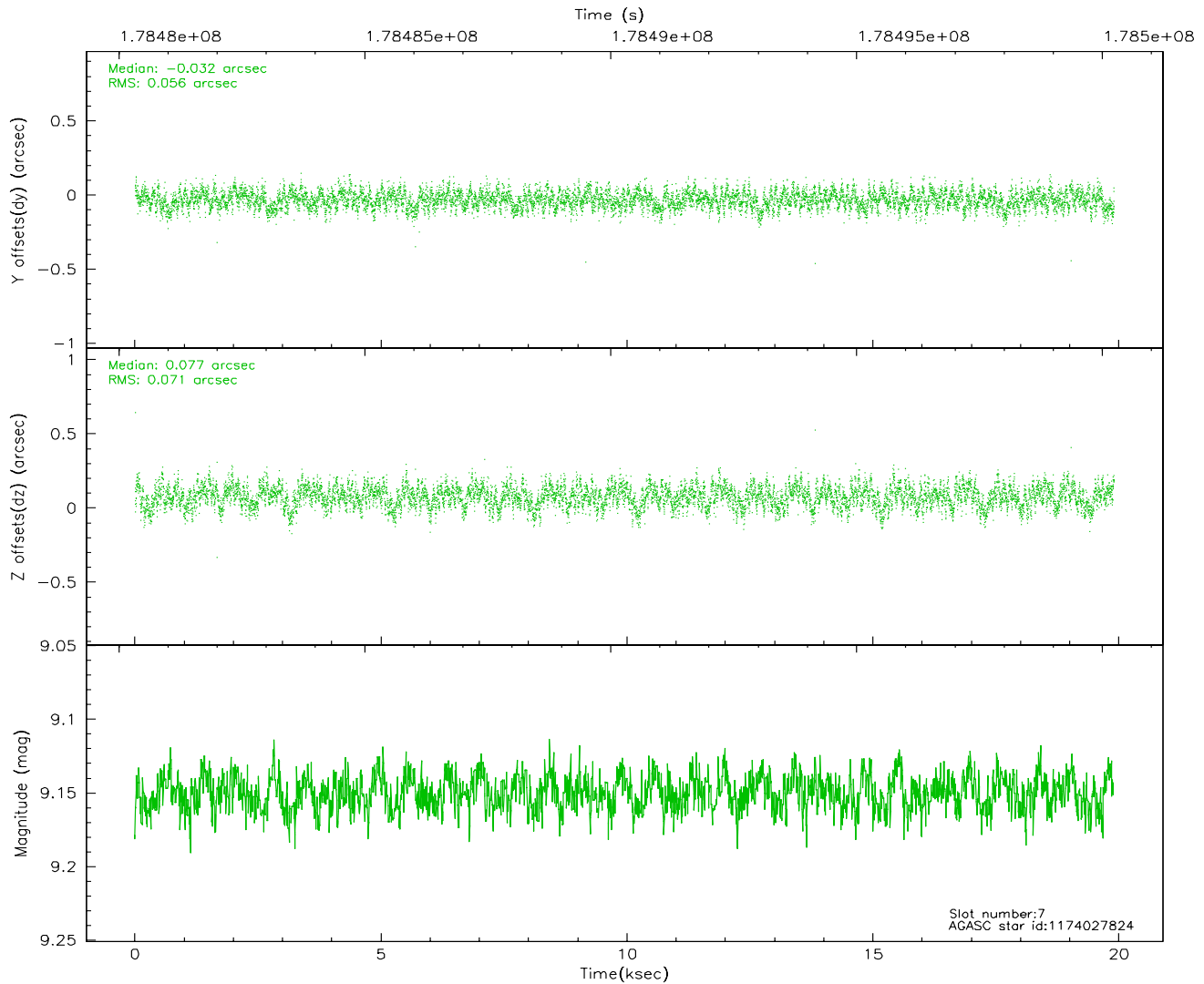
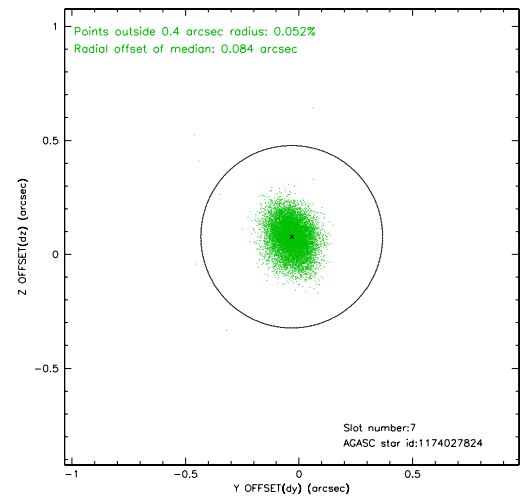
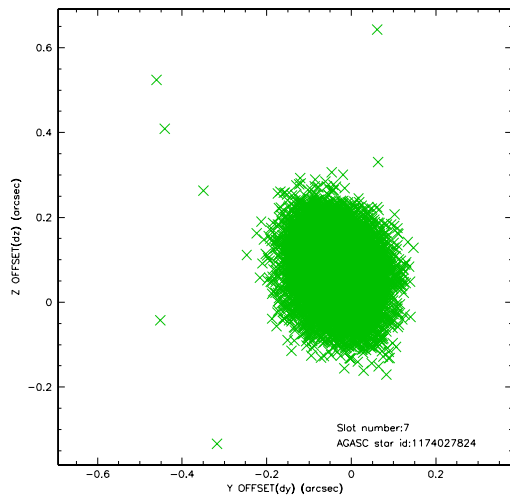
### 2.4.3 Slot 5



### 2.4.4 Slot 6

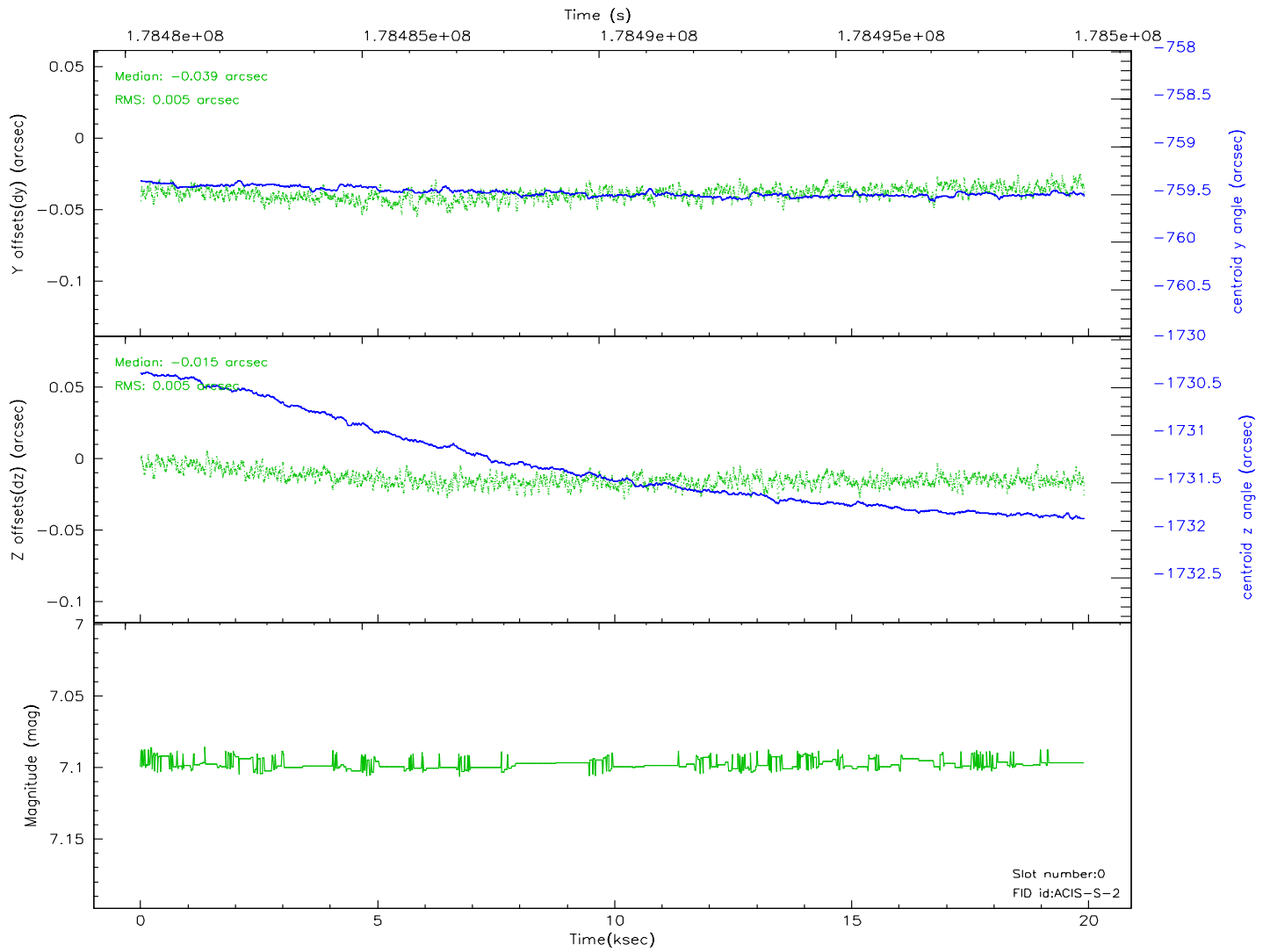
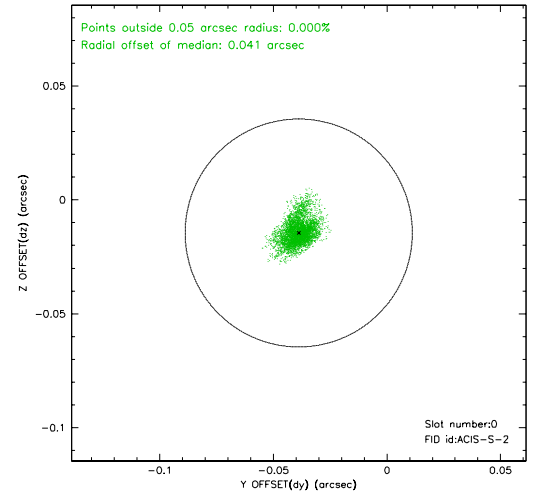
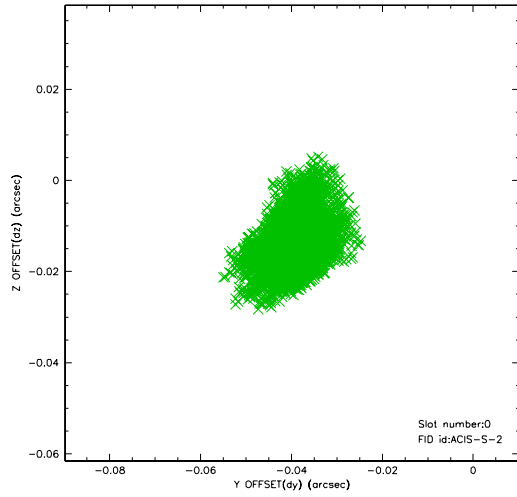


## 2.4.5 Slot 7

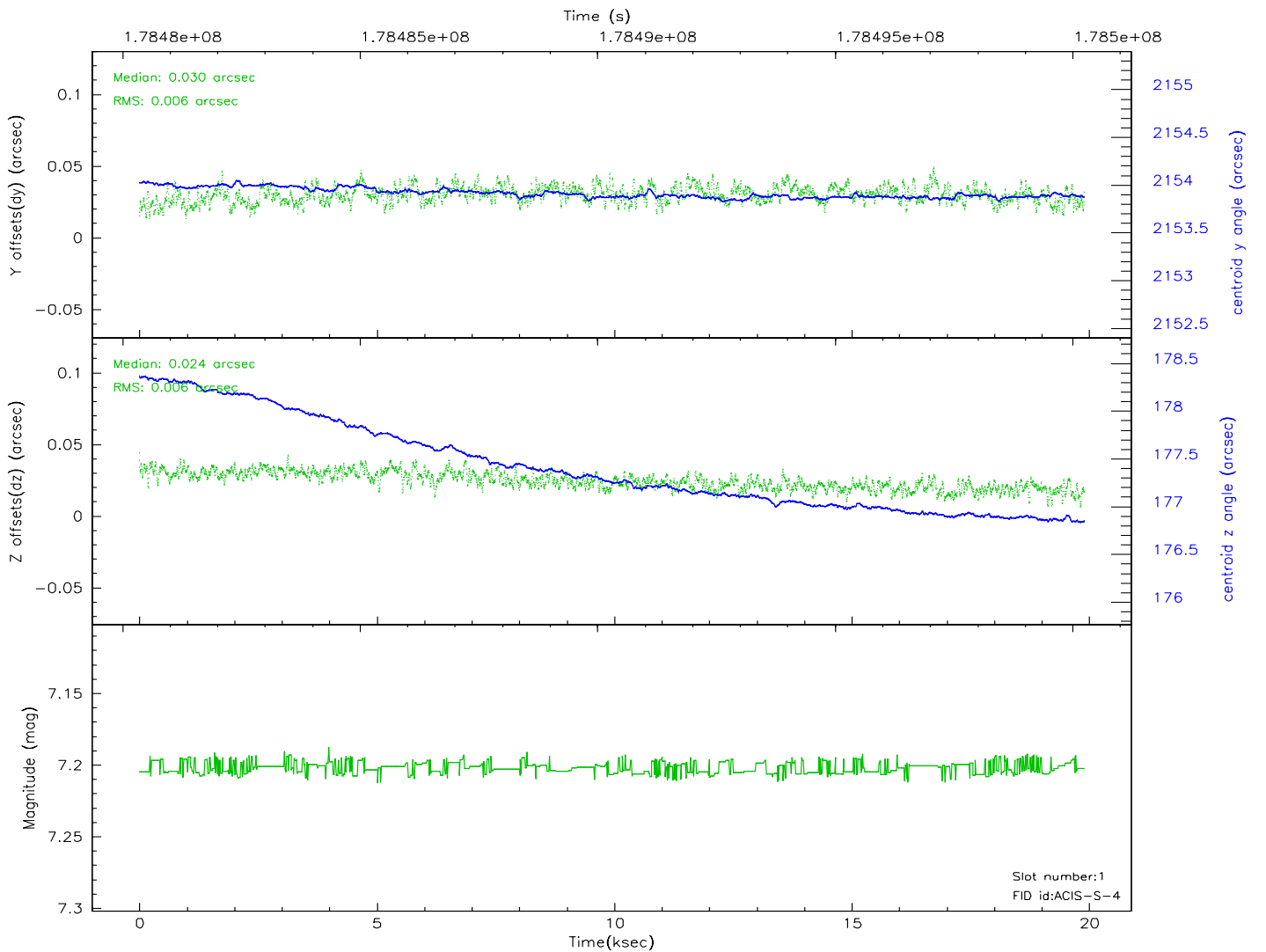
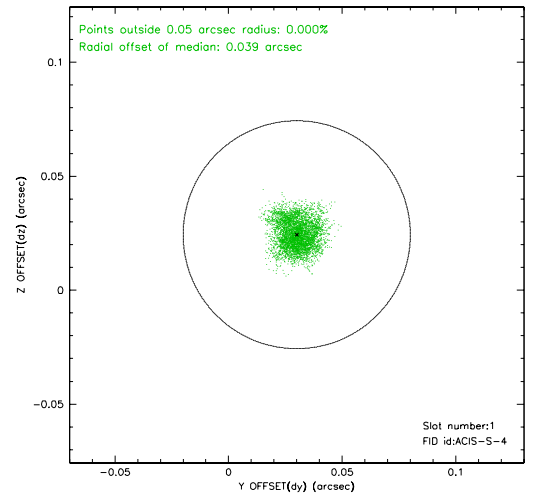
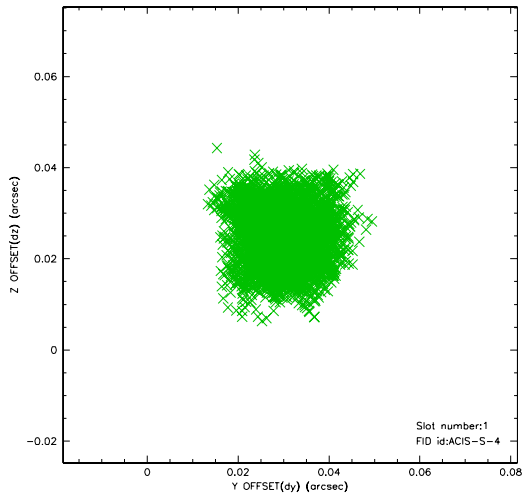


## 2.5 FID Slots

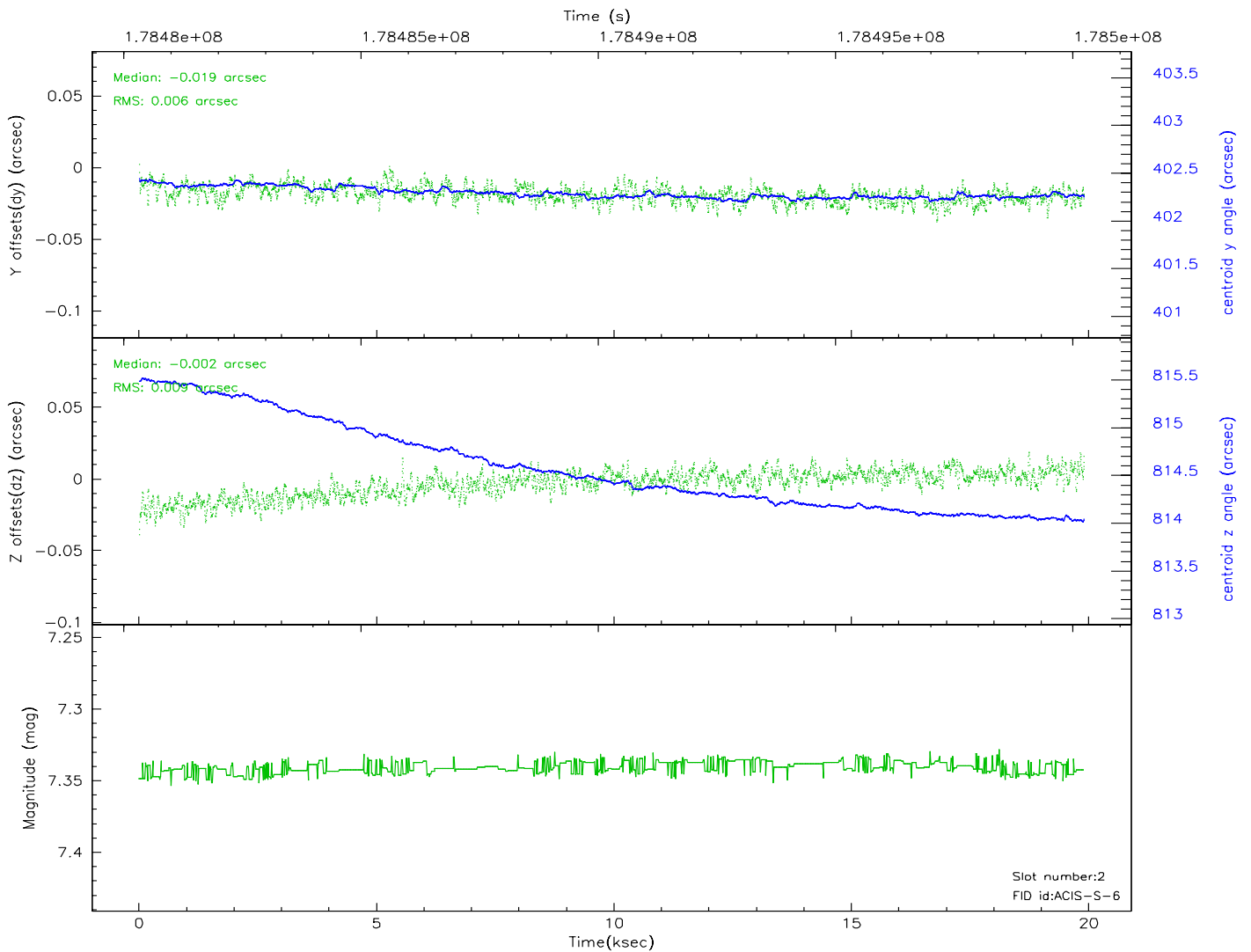
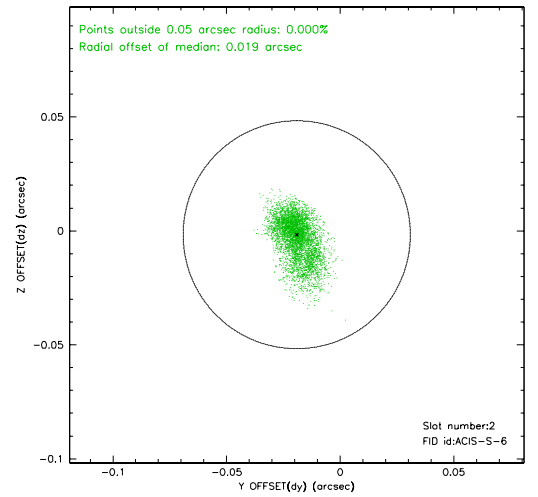
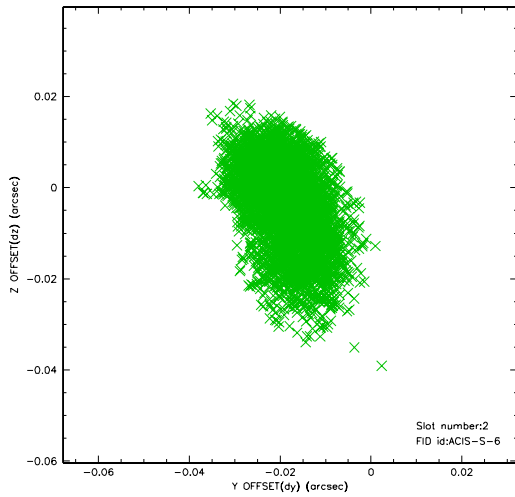
### 2.5.1 Slot 0



## 2.5.2 Slot 1

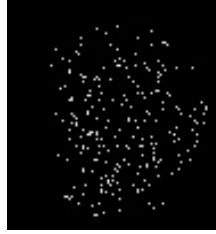


### 2.5.3 Slot 2



### 3 Point Sources

15.44 arcmin



13.91 arcmin



# A Summary

## A.1 Status

V&V Scientist	Jen Lauer
V&V Date (YYYY-MM-DD)	2006.07.10
V&V Edition	1
V&V Disposition and Status	OK
V&V Charge Time	19.898

## A.2 Comments

Window constraint met.

The ACIS focal plane temperature is above calibration limits for the first 13 ksec of the observation.