

# V&V Reference Report

## L2 ASCDS Version : 8.4.5

Observation 4505 - L2 Version 3  
Chandra X-Ray Center

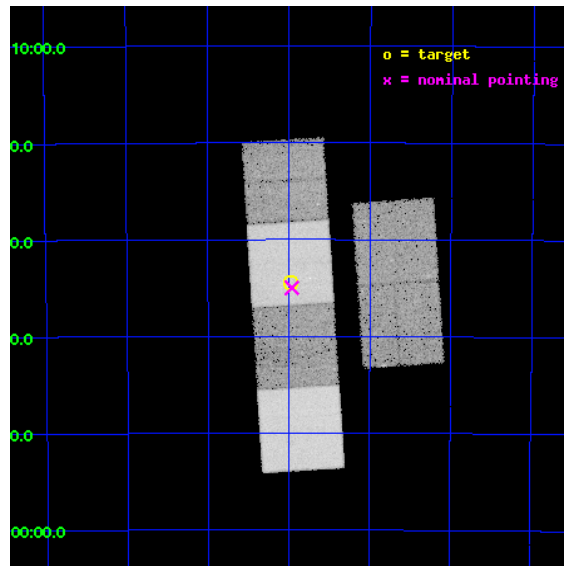
L2 Processing Date : Dec 2 2012

## Contents

<b>1</b>	<b>Front</b>	<b>2</b>
<b>2</b>	<b>OBI</b>	<b>3</b>
2.1	OBI . . . . .	3
2.1.1	Images . . . . .	3
2.1.2	Bias . . . . .	3
2.1.3	Parameters . . . . .	4
2.1.4	Events . . . . .	4
2.2	Compared Parameters . . . . .	5
2.3	Aspect . . . . .	6
2.4	Star Slots . . . . .	9
2.4.1	Slot 3 . . . . .	9
2.4.2	Slot 4 . . . . .	10
2.4.3	Slot 5 . . . . .	11
2.4.4	Slot 6 . . . . .	12
2.4.5	Slot 7 . . . . .	13
2.5	FID Slots . . . . .	14
2.5.1	Slot 0 . . . . .	14
2.5.2	Slot 1 . . . . .	15
2.5.3	Slot 2 . . . . .	16
<b>A</b>	<b>Summary</b>	<b>17</b>
A.1	Status . . . . .	17
A.2	Comments . . . . .	17

# 1 Front

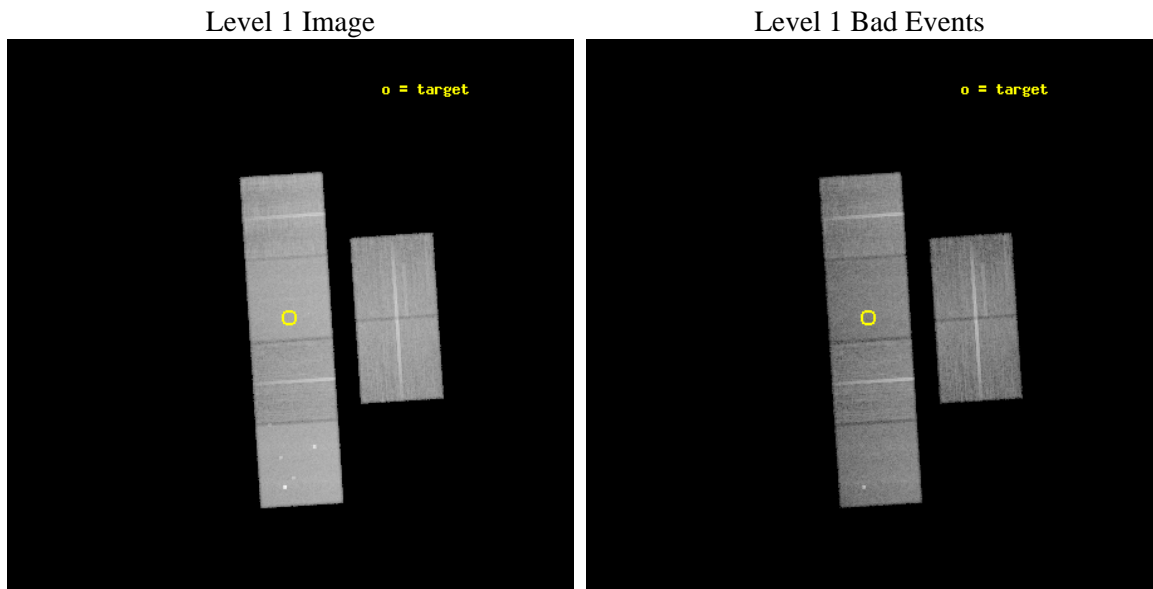
seq_num	200274	Sequence number
obs_id	4505	Observation id
title	Wind-Wind Interactions and Stellar Magnetic Fields in Pre-Planetary Nebulae	Proposal title
observer	Dr. Raghvendra Sahai	Principal investigator
object	HD101584	Source name
dtcycle	0	&#160
cycle	P	events from which exps? Prim/Second/Both
ra_targ	175.245	Observer's specified target RA [deg]
dec_targ	-55.573833	Observer's specified target Dec [deg]
ra_nom	175.24093924347	Nominal RA [deg]
dec_nom	-55.583246431077	Nominal Dec [deg]
roll_nom	266.28543614101	Nominal Roll [deg]
revision	3	Processing version of data
ontime	24956.342616111	Sum of GTIs [s]
livetime	24640.330379	Livetime [s]
ontime2	24956.383656114	Sum of GTIs [s]
ontime3	24956.219496101	Sum of GTIs [s]
ontime5	24956.301576108	Sum of GTIs [s]
ontime6	24956.260536104	Sum of GTIs [s]
ontime7	24956.342616111	Sum of GTIs [s]
ontime8	24956.178456128	Sum of GTIs [s]
l2events	294700	Number of level 2 events



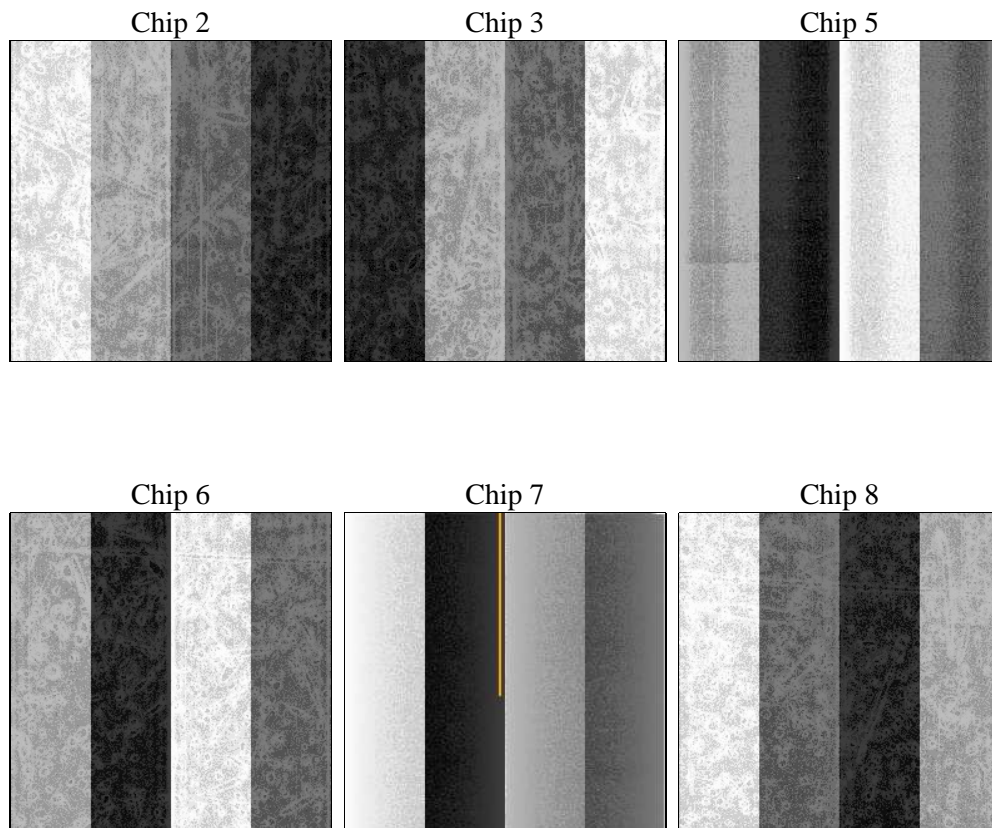
## 2 OBI

### 2.1 OBI

#### 2.1.1 Images



#### 2.1.2 Bias



### 2.1.3 Parameters

obi_num	0	Obi number	sched_exp_time	25000.000000	[s] Scheduled observation exposure time
ascdsver	8.4.5	Processing system revision	ontime	24956.342616111	Sum of GTIs [s]
caldbver	4.5.2	&#160	ontime2	24956.383656114	Sum of GTIs [s]
date	2012-12-02T23:45:42	Date and time of file creation	ontime3	24956.219496101	Sum of GTIs [s]
revision	3	Processing version of data	ontime5	24956.301576108	Sum of GTIs [s]
			ontime6	24956.260536104	Sum of GTIs [s]
			ontime7	24956.342616111	Sum of GTIs [s]
			ontime8	24956.178456128	Sum of GTIs [s]
			l1events	1308908	Number of level 1 events

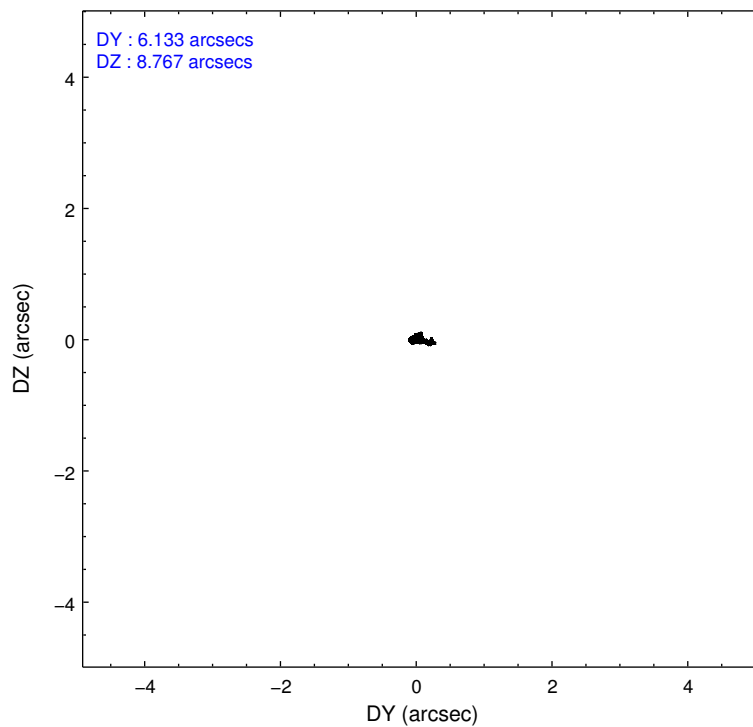
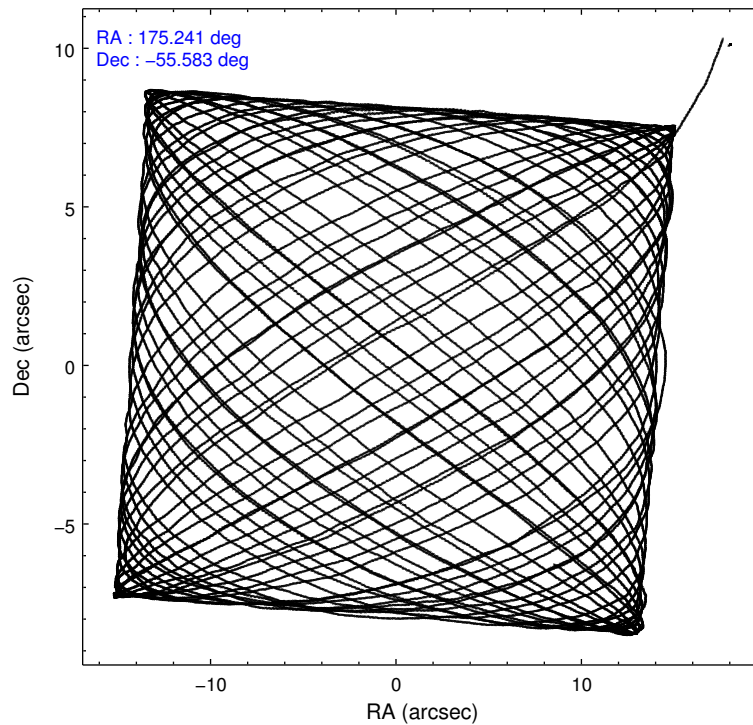
### 2.1.4 Events

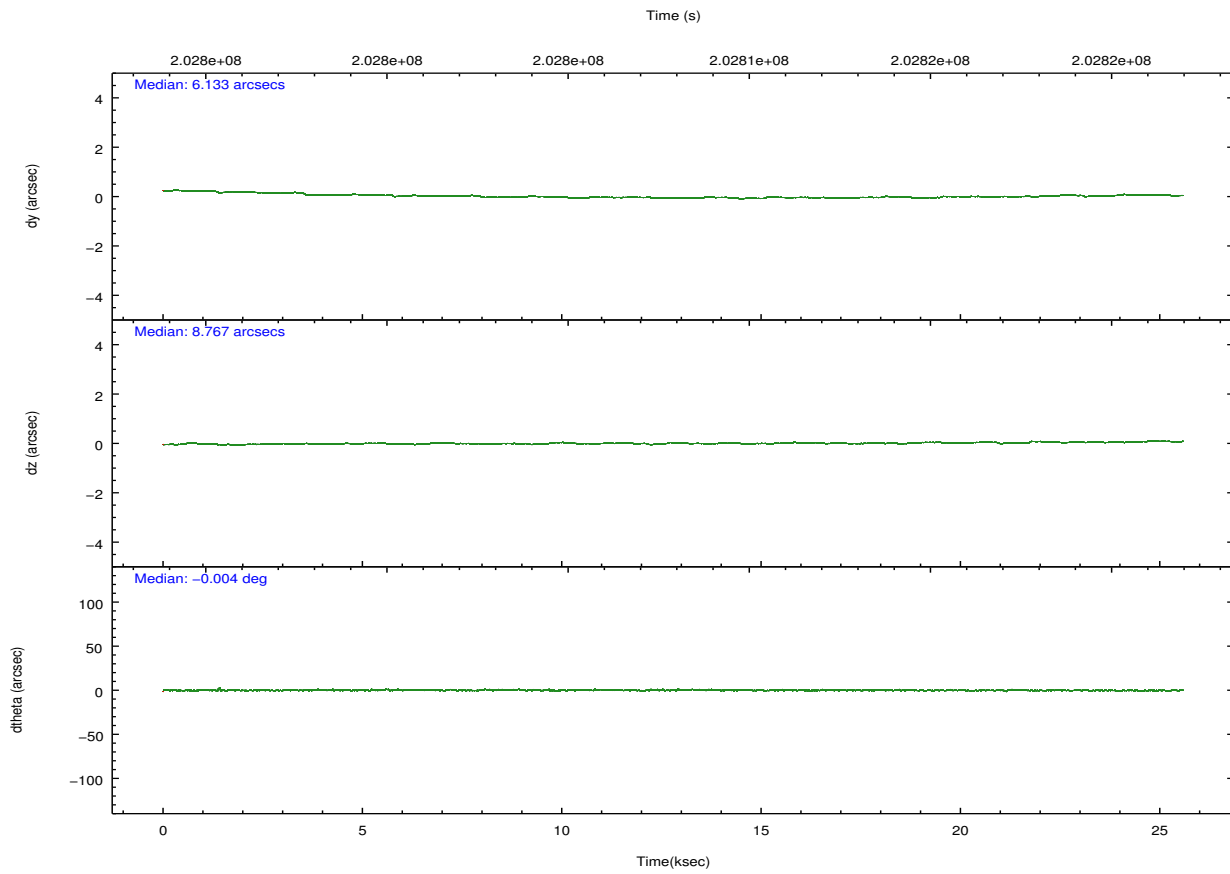
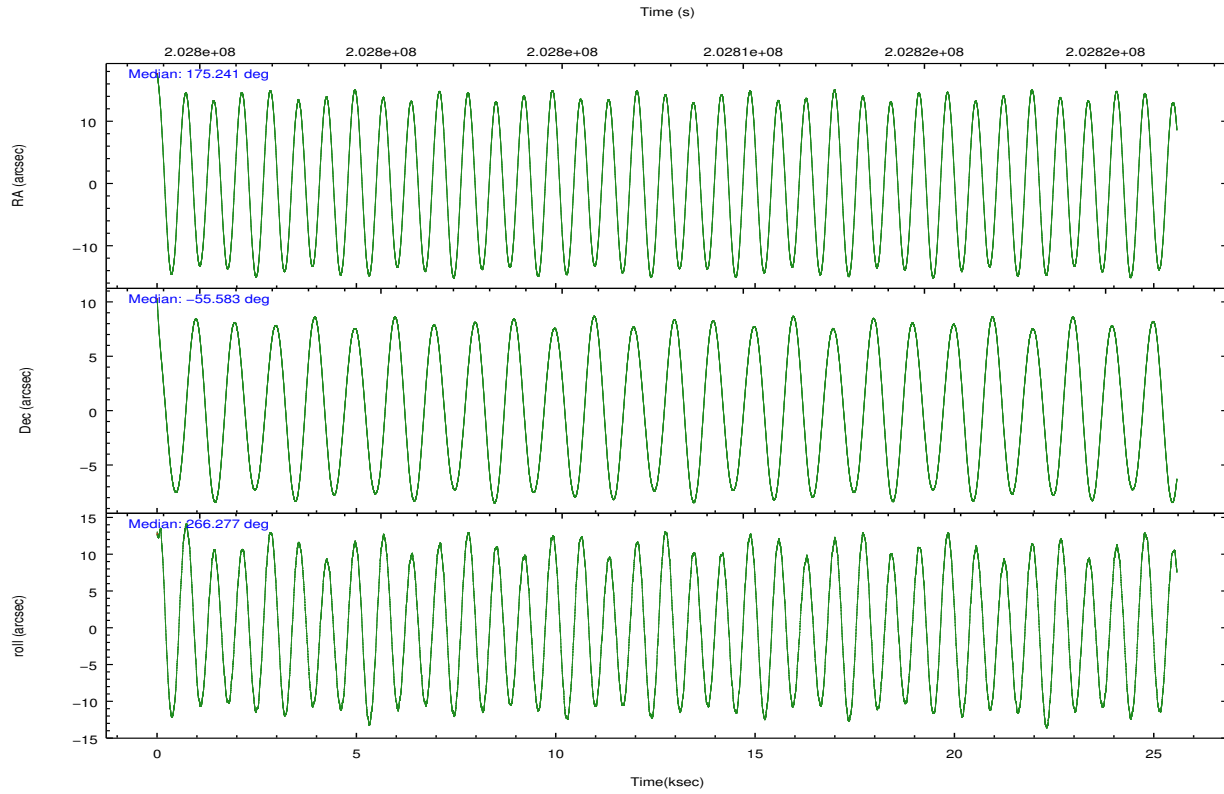
	ccd 2	ccd 3	ccd 5	ccd 6	ccd 7	ccd 8		ccd 2	ccd 3	ccd 5	ccd 6	ccd 7	ccd 8
level 1 events	184480	181531	279640	184749	247533	230975	grade 0 events	9435	9293	15674	8547	9065	15524
rejected events	162873	160286	150642	163157	145674	181966		5%	5%	5%	4%	3%	6%
rejected %	88%	88%	53%	88%	58%	78%	grade 1 events	113	103	1511	96	229	142
								0%	0%	0%	0%	0%	0%
							grade 2 events	4375	4058	37736	4462	20301	10873
								2%	2%	13%	2%	8%	4%
							grade 3 events	1979	2135	4948	2025	9063	5106
								1%	1%	1%	1%	3%	2%
							grade 4 events	2101	2058	4721	2083	8789	4855
								1%	1%	1%	1%	3%	2%
							grade 5 events	7232	8162	20264	8534	23886	11381
								3%	4%	7%	4%	9%	4%
							grade 6 events	3720	3706	65990	4489	54666	12655
								2%	2%	23%	2%	22%	5%
							grade 7 events	155525	152016	128796	154513	121534	170439
								84%	83%	46%	83%	49%	73%

## 2.2 Compared Parameters

Parameter	Planned	Actual	Parameter	Planned	Actual
Instrument	ACIS	ACIS	Obspar format version number	7	7
Detector	ACIS-235678	ACIS-235678	Obspar file type	PREDICTED	ACTUAL
Grating	NONE	NONE	Obspar update status	NONE	UPDATED
Data mode	FAINT	FAINT	Number of optional ACIS chips dropped	0	0
Observation mode	POINTING	POINTING	On-chip summing requested	N	N
[deg] Pointing RA	175.219016	175.2409392434681	Subarray requested	NONE	NONE
[deg] Pointing Dec	-55.558961	-55.58324643107655	Alternating exposures requested	N	N
[deg] Pointing Roll	266.110728	266.2854361410148	[s] Primary exposure time	0.000000	3.2
[mm] SIM focus pos	-0.684267	-0.6828225247311905			
[mm] SIM defocus	0	0.001444936568705701			
[mm] SIM translation stage pos	-190.132523	-190.1400660498719			
[mm] SIM translation stage offset	0	0.00754346686406393			
[s] Observation start time (MET)	202795685.184000	202794377.8901			
Observation start date	2004-06-05T04:07:01	2004-06-05T03:46:17			
[s] Observation end time (MET)	202820685.184000	202821719.76631			
Observation end date	2004-06-05T11:03:41	2004-06-05T11:21:59			
Read mode	TIMED	TIMED			

## 2.3 Aspect





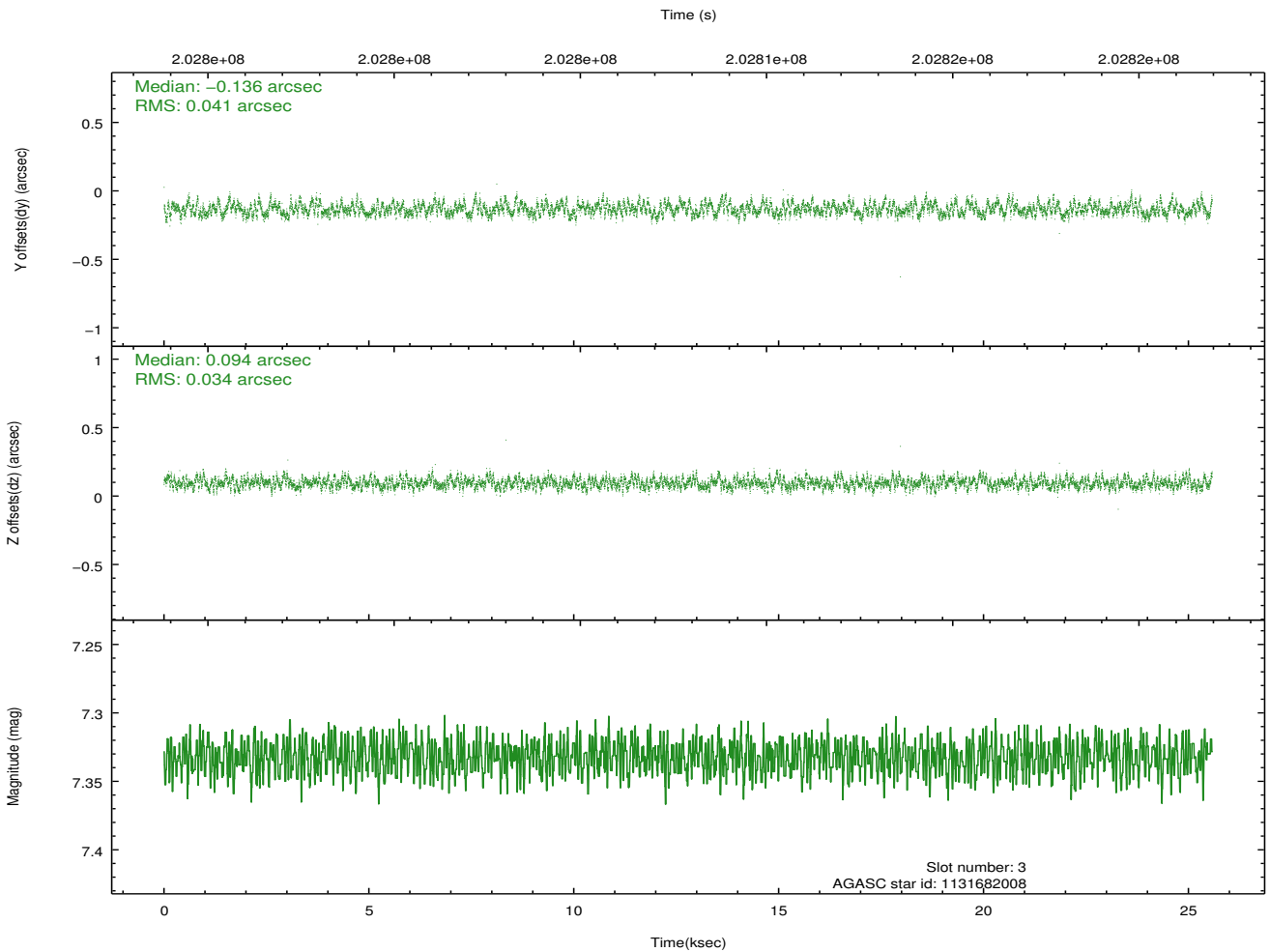
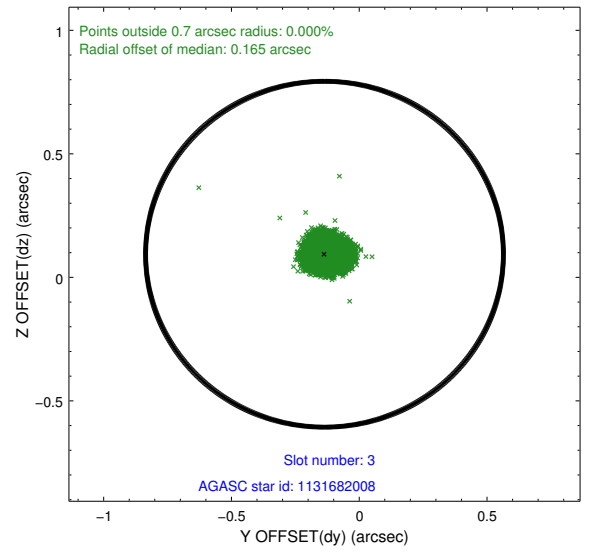
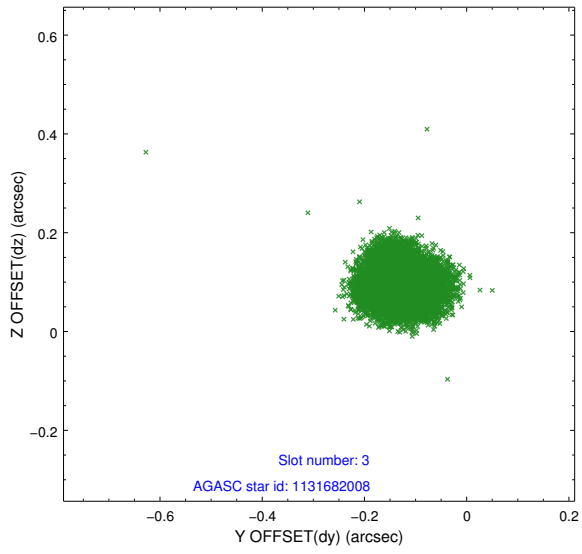
### Slot Statistics

slot	status	id	mag	n_pts	med_dy	med_dz	dr1	dr2	ra	dec	mean_y	mean_z
0	FID	ACIS-S-2	7.10	6239	-0.044	-0.051	0.007	0.011	0.000000	0.000000	-758.93	-1730.03
1	FID	ACIS-S-4	7.20	6239	0.089	0.035	0.006	0.010	0.000000	0.000000	2154.43	178.41
2	FID	ACIS-S-5	7.23	6239	-0.076	0.025	0.007	0.011	0.000000	0.000000	-1811.66	172.21
3	GUIDE	1131682008	7.33	12478	-0.136	0.094	0.057	0.087	175.220414	-55.098474	-1654.04	-109.58
4	GUIDE	1131682760	8.62	12472	0.003	0.003	0.070	0.116	174.263840	-55.338988	-643.69	-2003.84
5	GUIDE	1131684312	6.96	12476	-0.066	-0.012	0.055	0.079	174.289768	-55.463596	-200.88	-1914.62
6	GUIDE	1131677648	9.01	12474	0.229	-0.109	0.084	0.139	174.165433	-56.141549	2252.61	-1964.82
7	GUIDE	1131689920	7.47	12476	-0.031	0.025	0.053	0.086	176.188890	-55.819402	816.16	2021.63

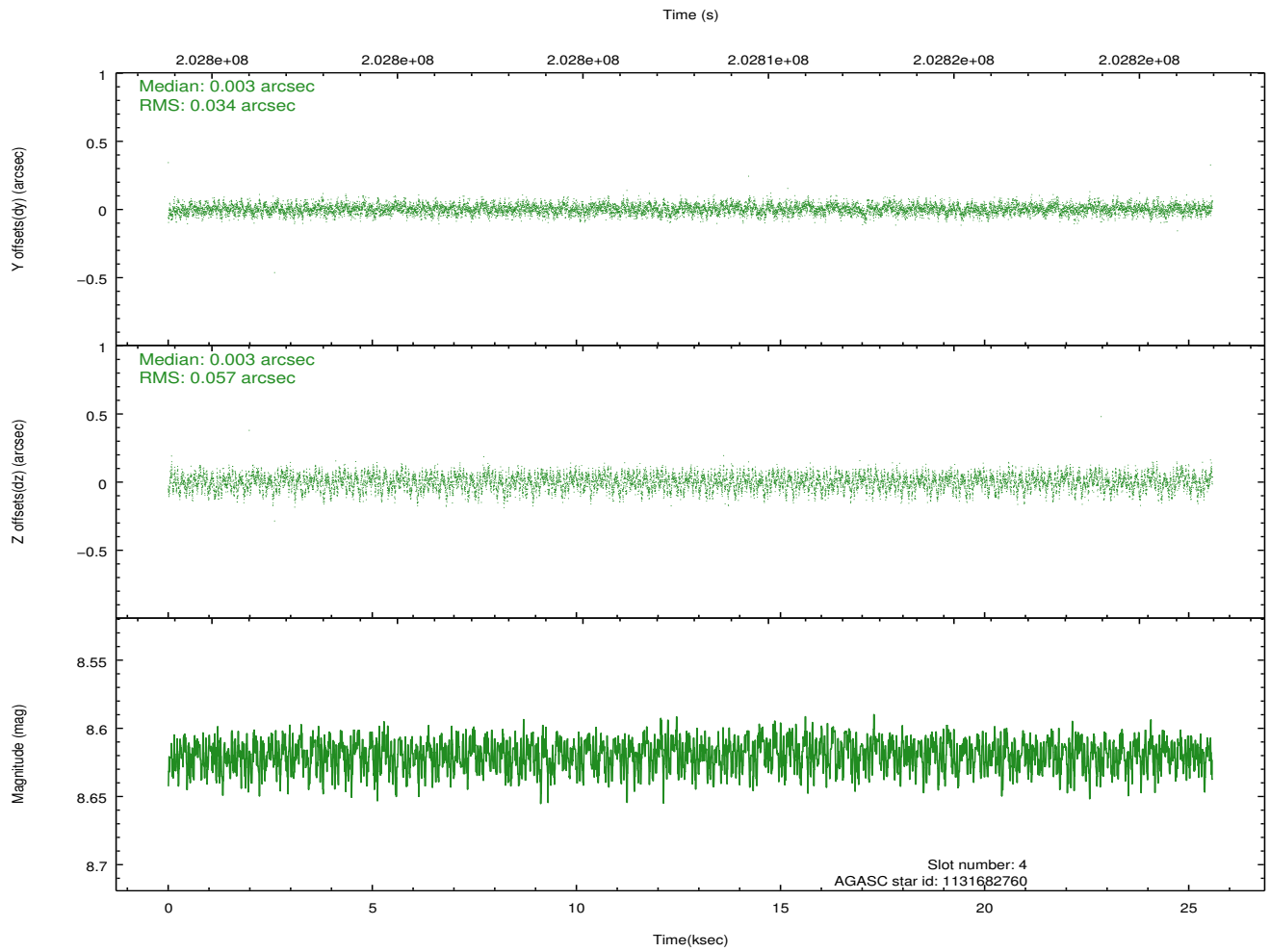
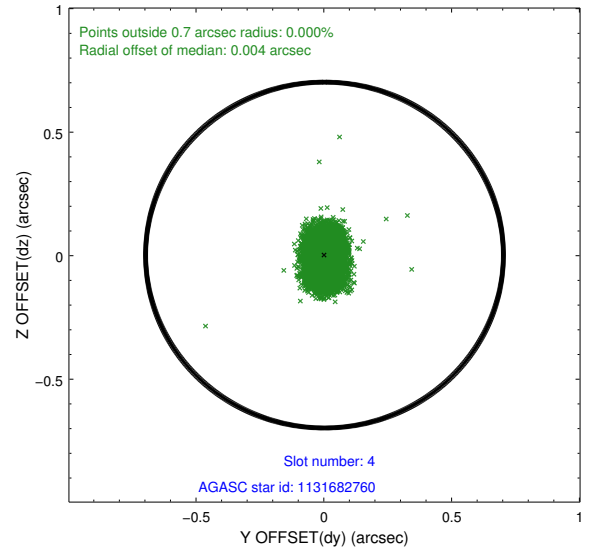
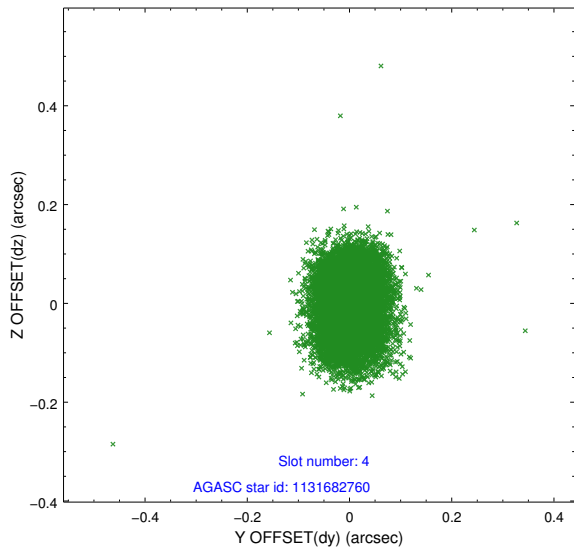
∞

## 2.4 Star Slots

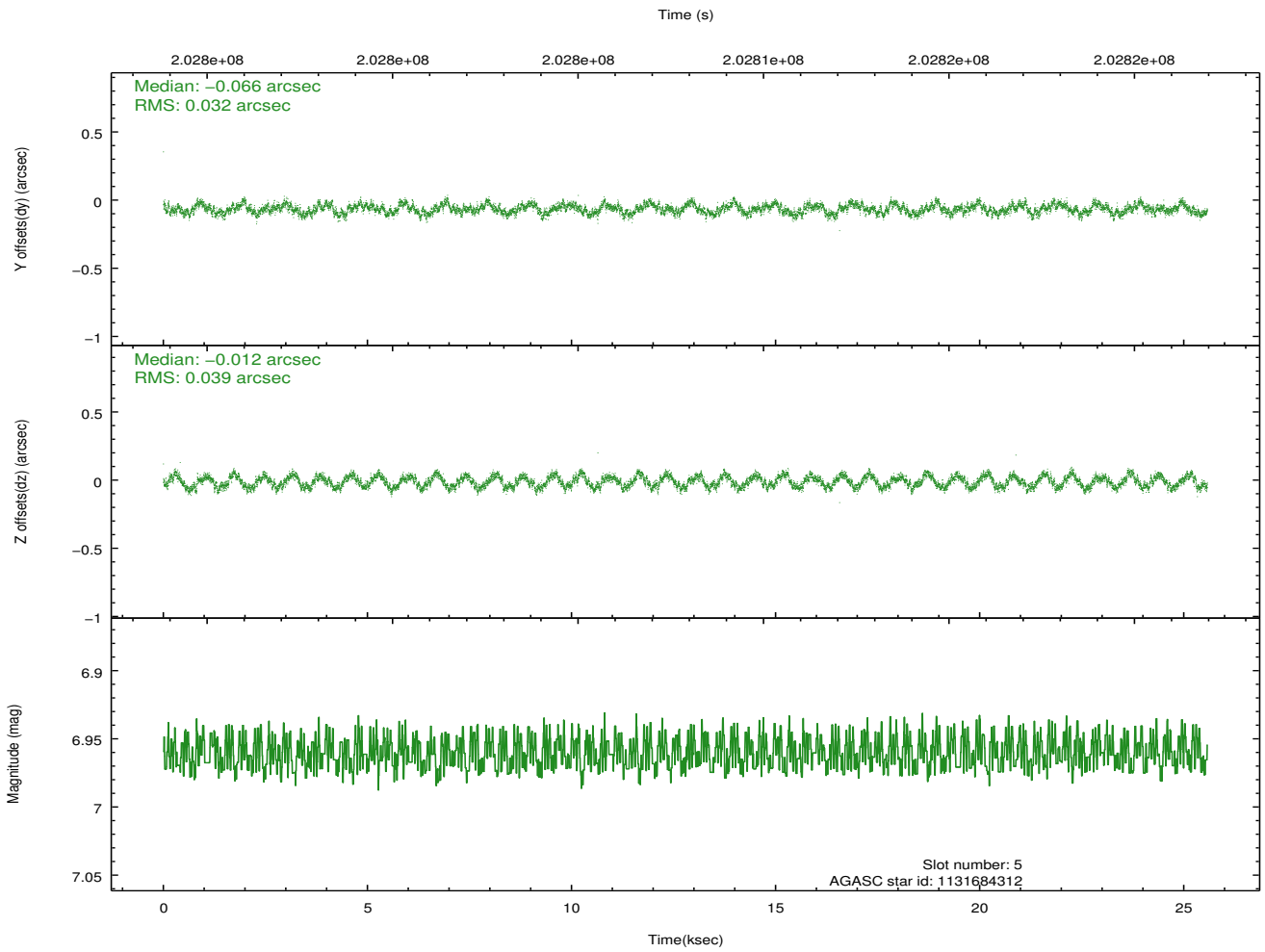
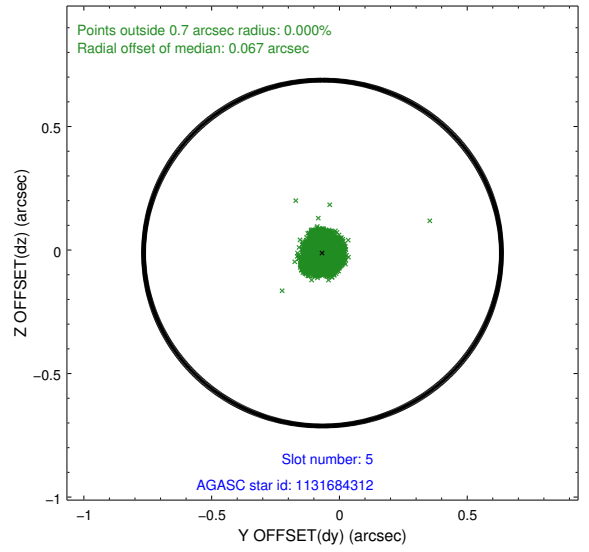
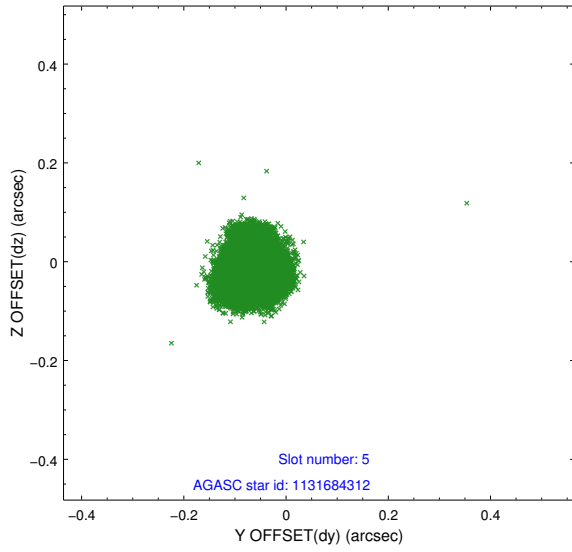
### 2.4.1 Slot 3



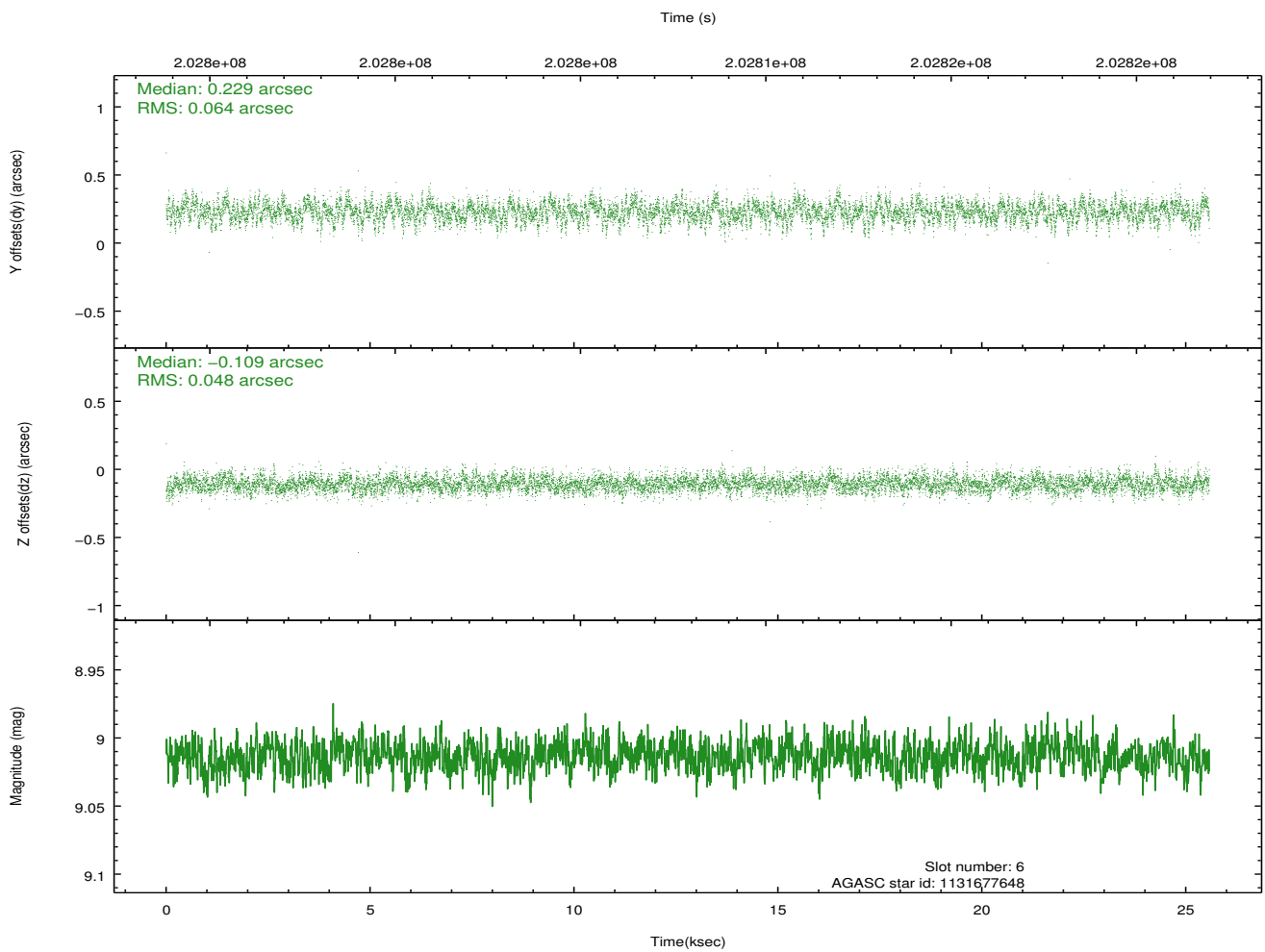
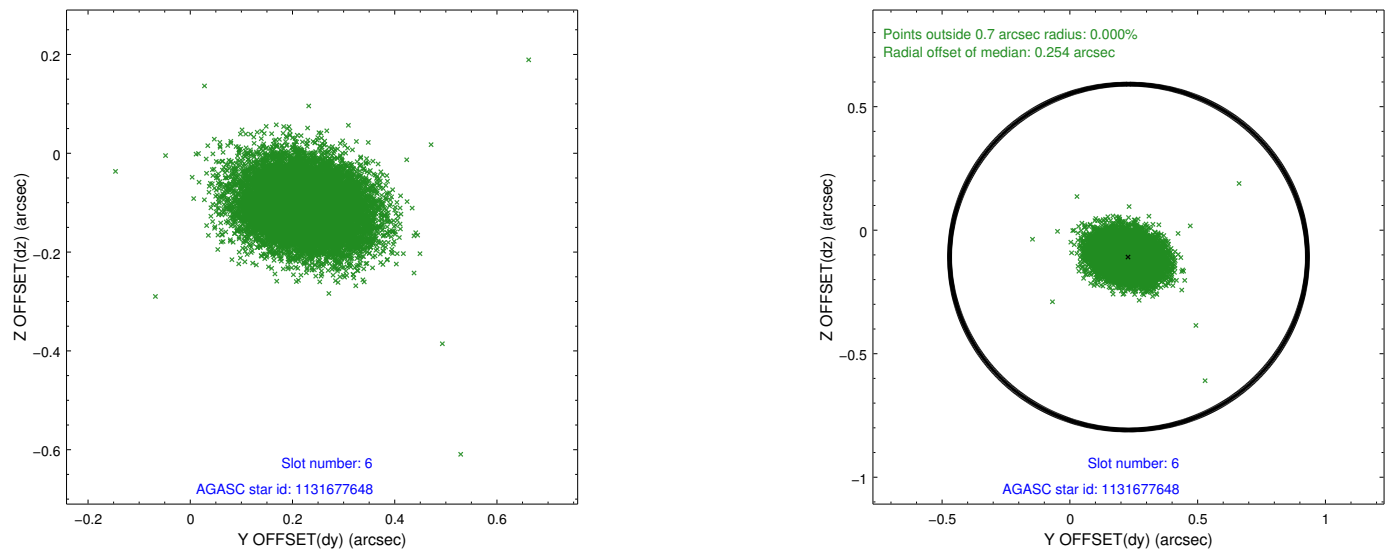
### 2.4.2 Slot 4



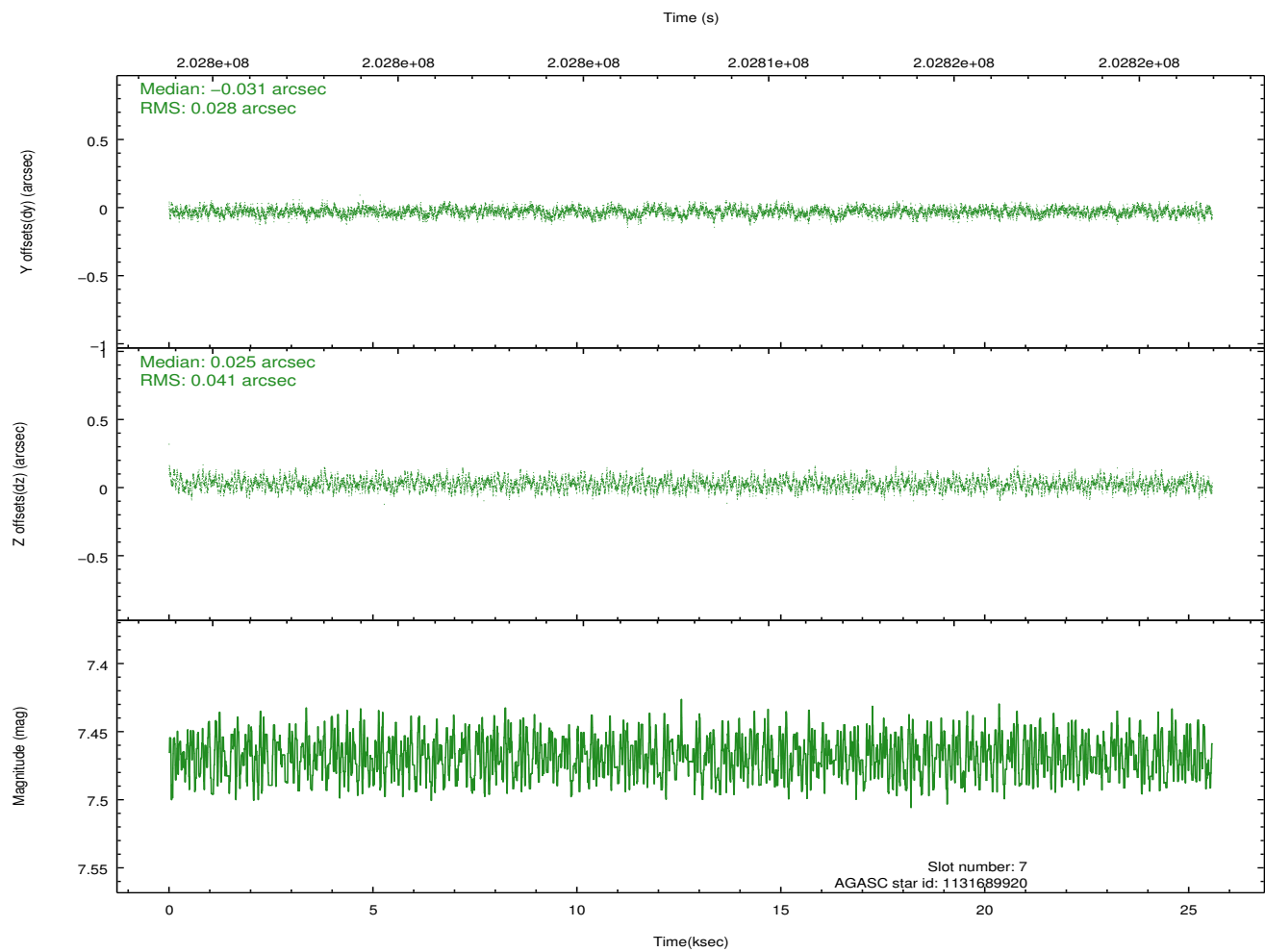
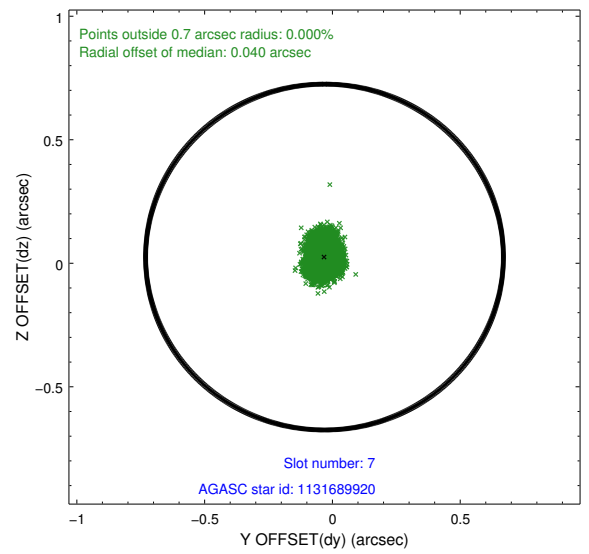
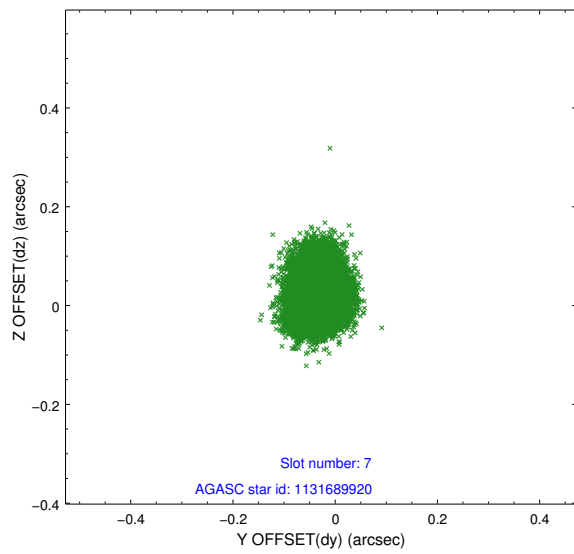
### 2.4.3 Slot 5



## 2.4.4 Slot 6

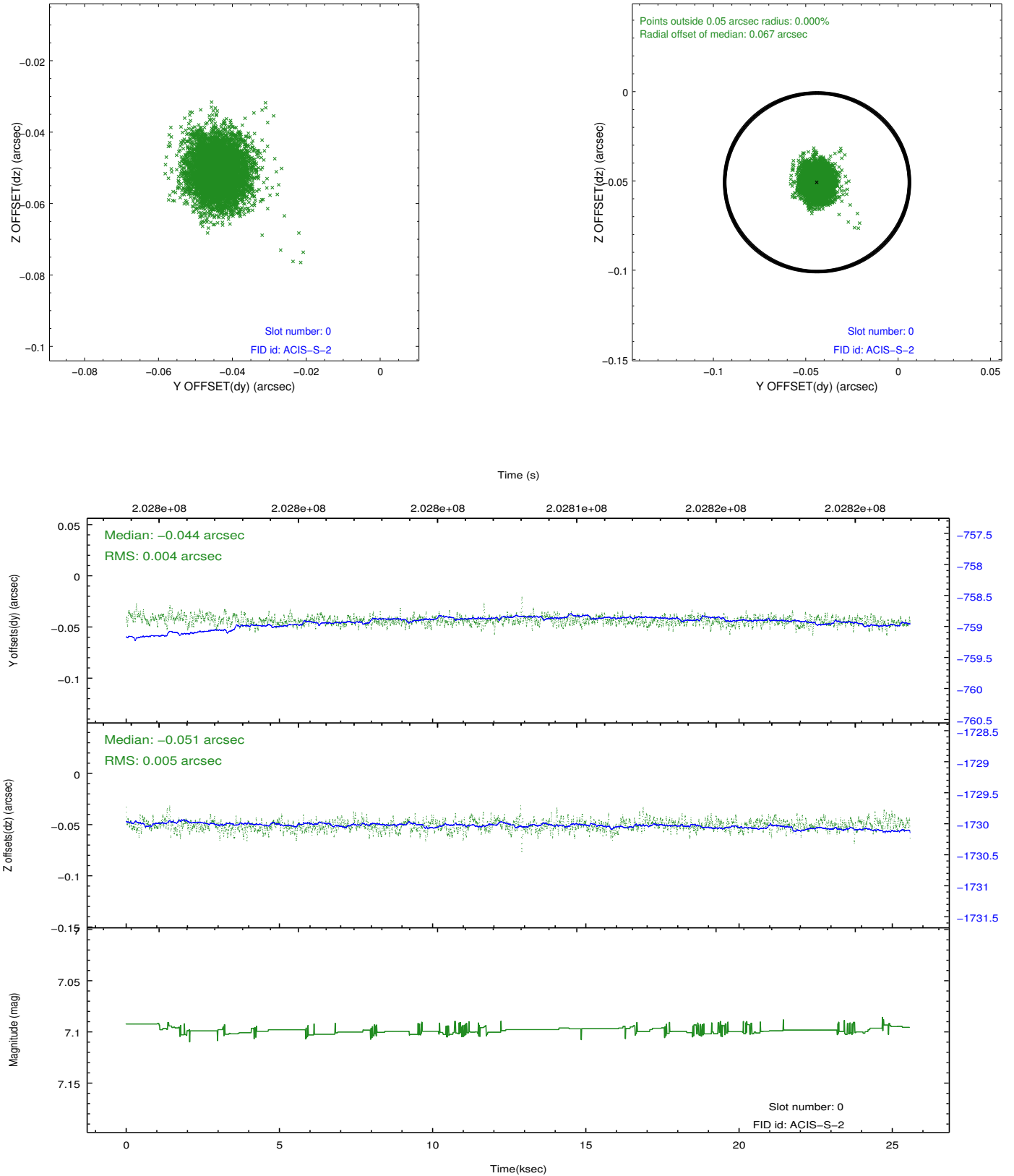


## 2.4.5 Slot 7

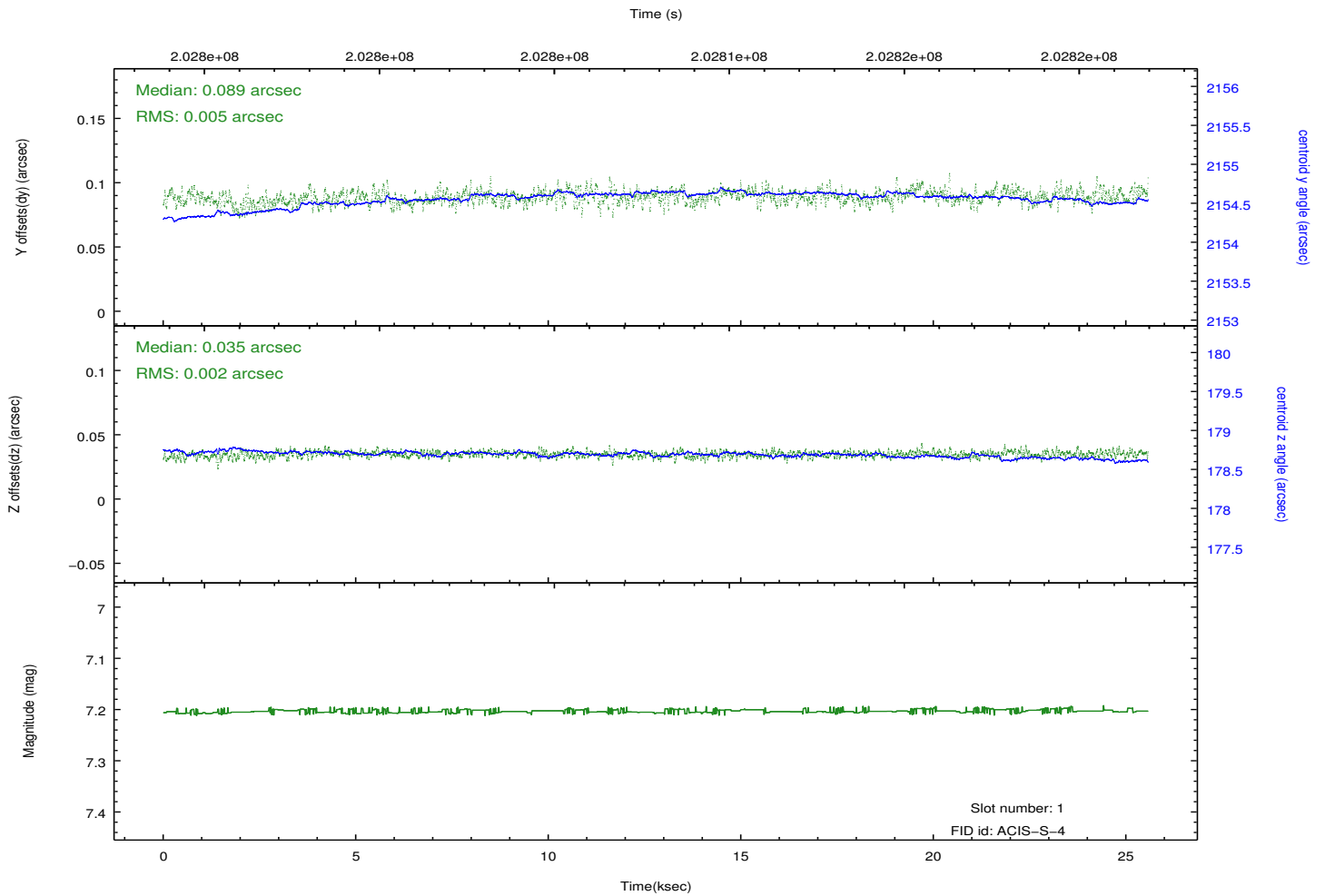
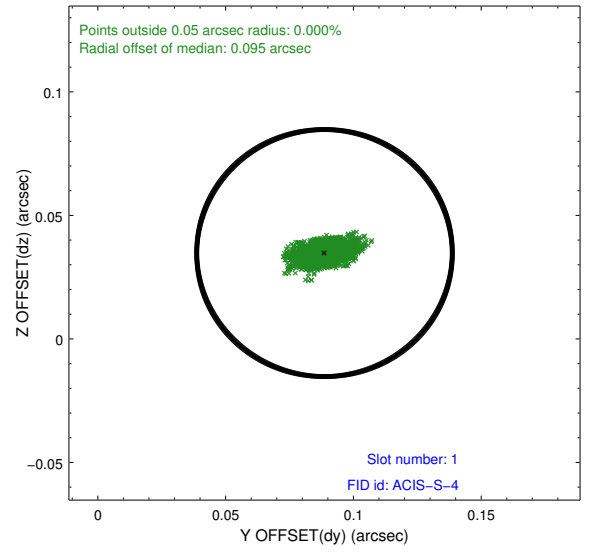
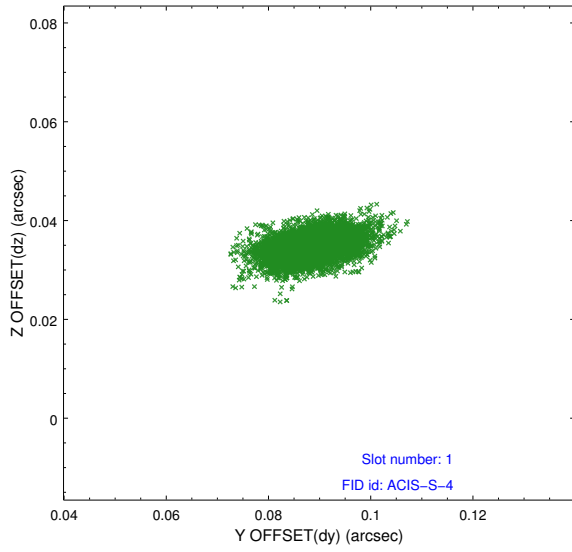


## 2.5 FID Slots

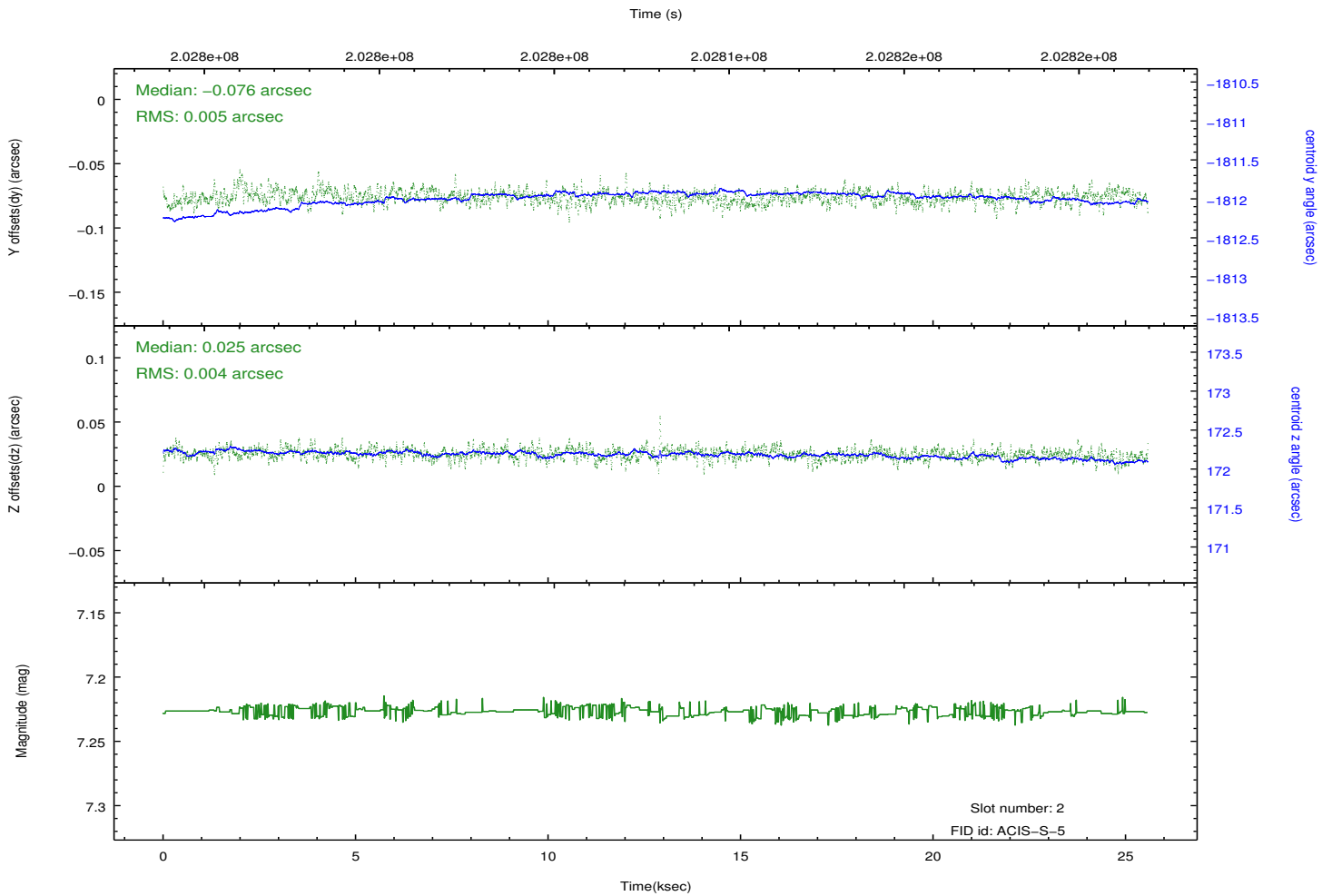
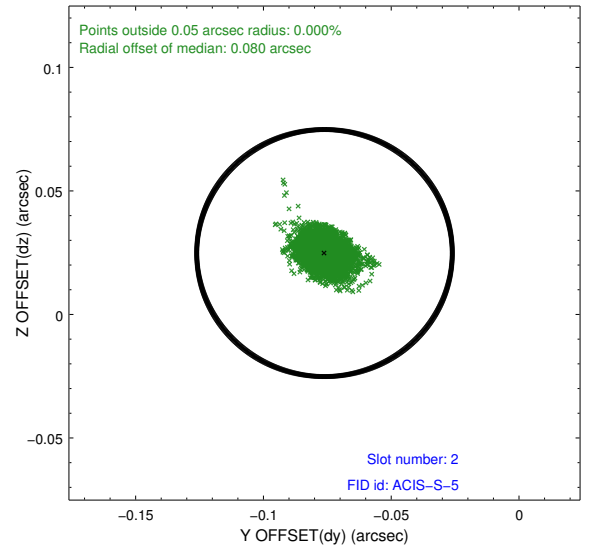
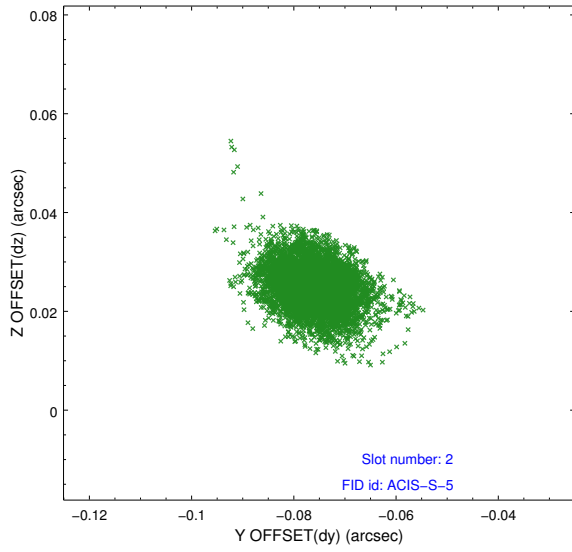
### 2.5.1 Slot 0



## 2.5.2 Slot 1



### 2.5.3 Slot 2



# A Summary

## A.1 Status

V&V Scientist	Jen Lauer
V&V Date (YYYY-MM-DD)	2012.12.17
V&V Edition	1
V&V Disposition and Status	OK
V&V Charge Time	24.956

## A.2 Comments