

# V&V Reference Report

## L2 ASCDS Version : 10.9.1

Observation 4565 - L2 Version 4  
Chandra X-Ray Center

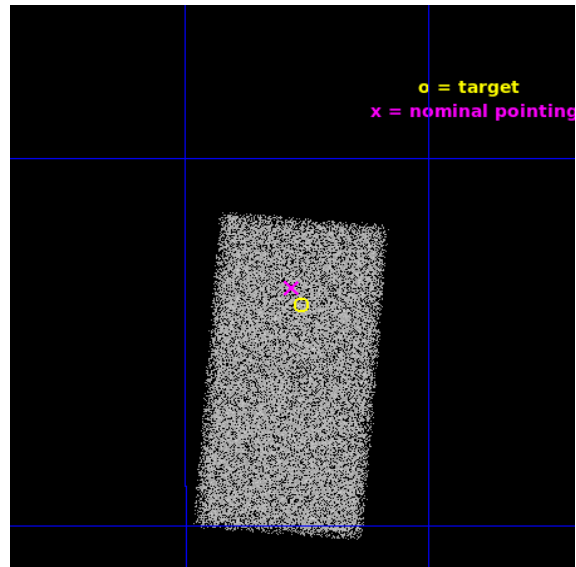
L2 Processing Date : Sep 23 2020

## Contents

<b>1</b>	<b>Front</b>	<b>2</b>
<b>2</b>	<b>OBI</b>	<b>3</b>
2.1	OBI . . . . .	3
2.1.1	Images . . . . .	3
2.1.2	Bias . . . . .	3
2.1.3	Parameters . . . . .	4
2.1.4	Events . . . . .	4
2.2	Compared Parameters . . . . .	5
2.3	Aspect . . . . .	6
2.4	Star Slots . . . . .	9
2.4.1	Slot 3 . . . . .	9
2.4.2	Slot 4 . . . . .	10
2.4.3	Slot 5 . . . . .	11
2.4.4	Slot 6 . . . . .	12
2.4.5	Slot 7 . . . . .	13
2.5	FID Slots . . . . .	14
2.5.1	Slot 0 . . . . .	14
2.5.2	Slot 1 . . . . .	15
2.5.3	Slot 2 . . . . .	16
<b>A</b>	<b>Summary</b>	<b>17</b>
A.1	Status . . . . .	17
A.2	Comments . . . . .	17

# 1 Front

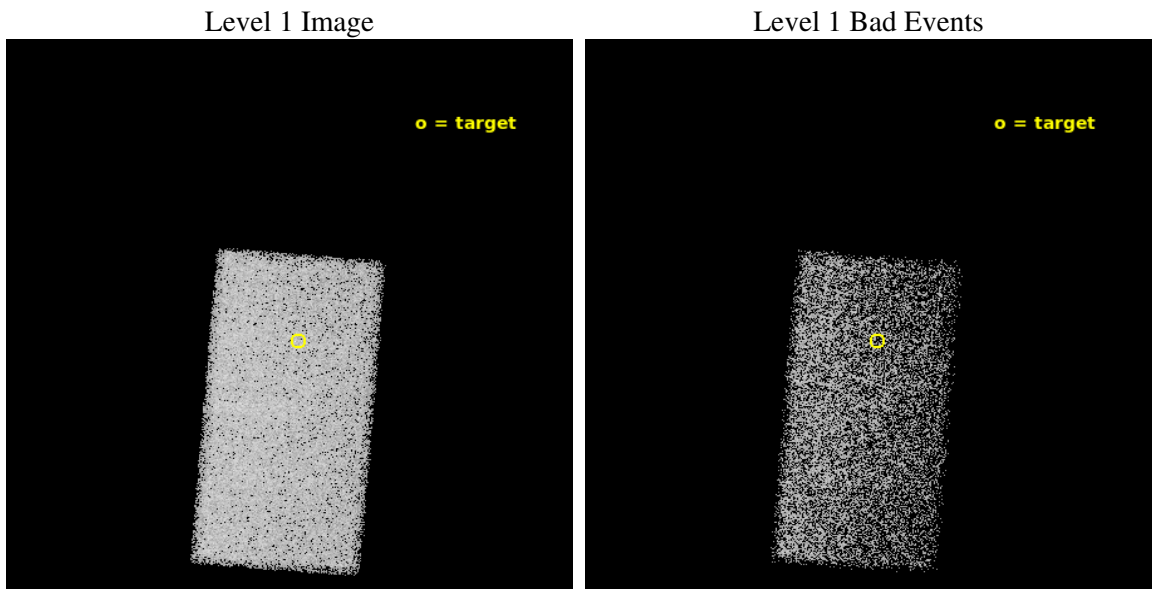
seq_num	400348	Sequence number
obs_id	4565	Observation id
title	X-Ray Jets in Microquasars	Proposal title
observer	St phane Corbel	Principal investigator
object	H1743-322	Source name
dtcycle	0	&#160
cycle	P	events from which exps? Prim/Second/Both
ra_targ	266.565	Observer's specified target RA [deg]
dec_targ	-32.233306	Observer's specified target Dec [deg]
ra_nom	266.56997587874	Nominal RA [deg]
dec_nom	-32.225595460618	Nominal Dec [deg]
roll_nom	94.577941893103	Nominal Roll [deg]
revision	4	Processing version of data
ontime	23632.5	Sum of GTIs [s]
livetime	23003.134247002	Livetime [s]
ontime7	23632.5	Sum of GTIs [s]
l2events	48847	Number of level 2 events



## 2 OBI

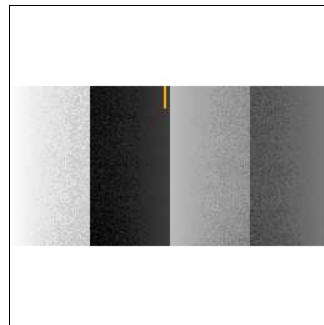
### 2.1 OBI

#### 2.1.1 Images



#### 2.1.2 Bias

Chip 7



### 2.1.3 Parameters

obi_num	0	Obi number	sched_exp_time	23500.000000	[s] Scheduled observation exposure time
ascdsver	10.9.1	Processing system revision	ontime	23632.5	Sum of GTIs [s]
caldbver	4.9.2	&#160	ontime7	23632.5	Sum of GTIs [s]
date	2020-09-23T06:38:27	Date and time of file creation	l1events	113912	Number of level 1 events
revision	4	Processing version of data			

### 2.1.4 Events

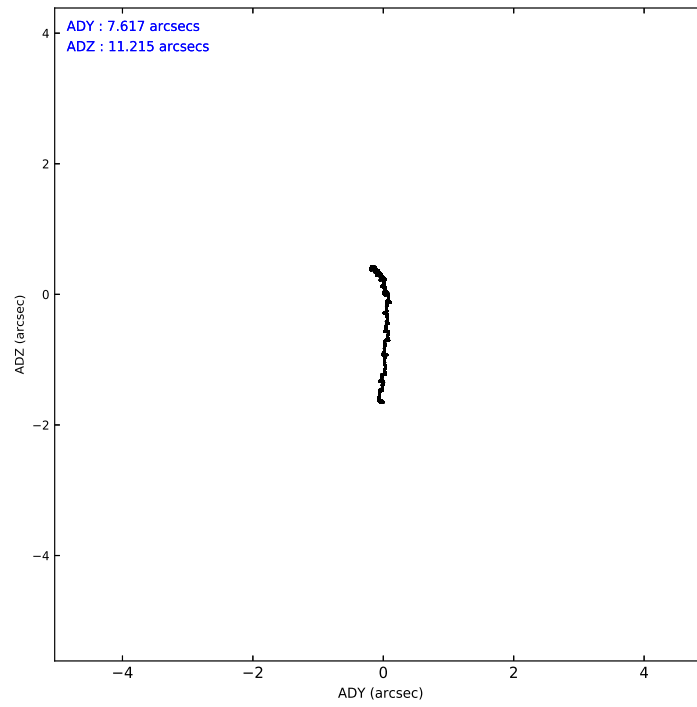
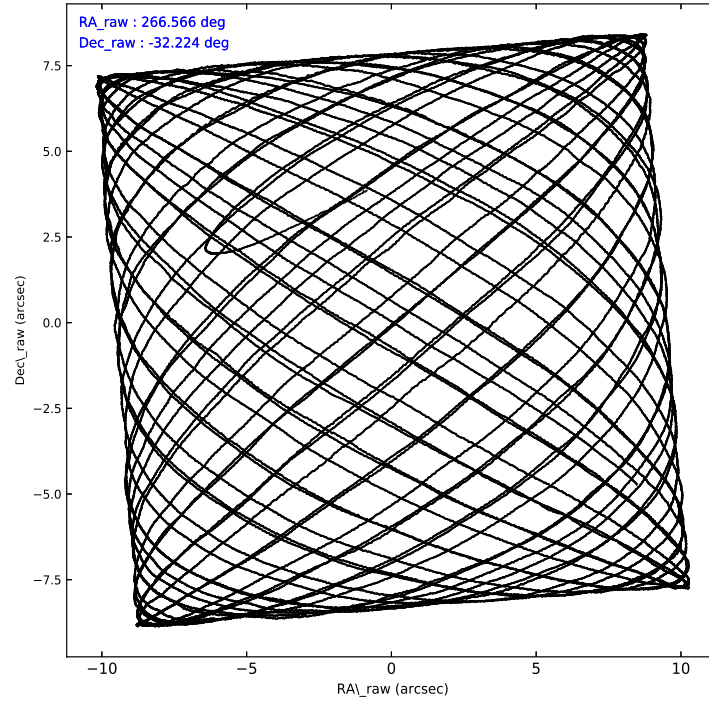
	<b>ccd 7</b>
level 1 events	113912
rejected events	63838
rejected %	<b>56%</b>

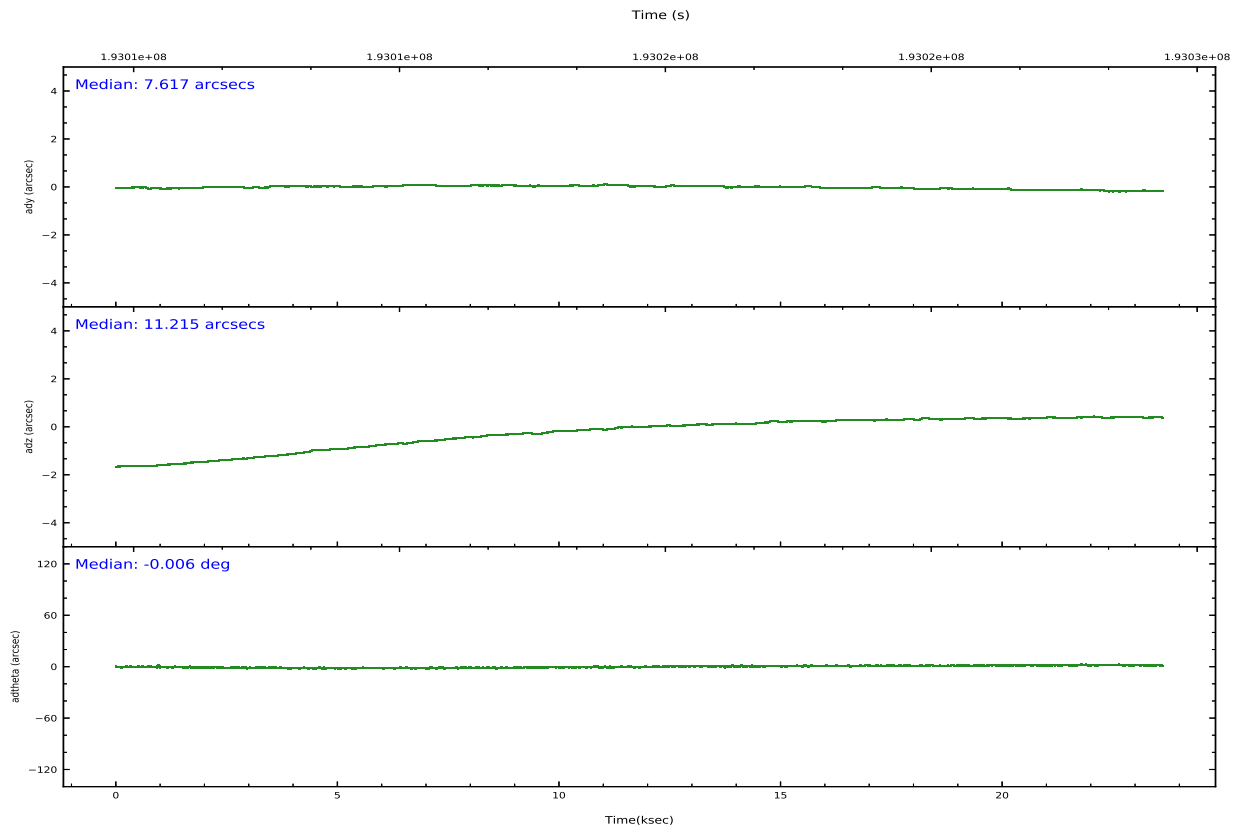
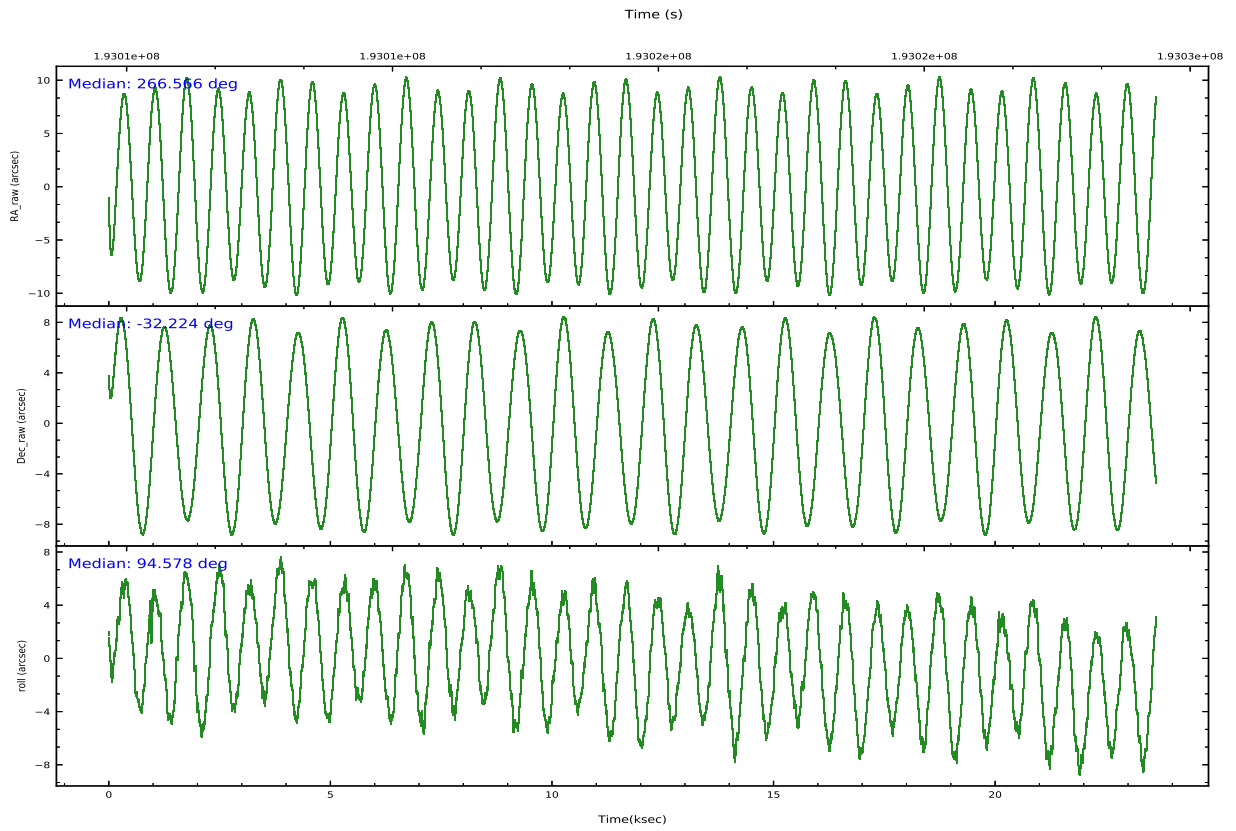
	<b>ccd 7</b>
grade 0 events	5268
	4%
grade 1 events	105
	0%
grade 2 events	10113
	8%
grade 3 events	5099
	4%
grade 4 events	4933
	4%
grade 5 events	10481
	9%
grade 6 events	26785
	23%
grade 7 events	51128
	44%

## 2.2 Compared Parameters

Parameter	Planned	Actual	Parameter	Planned	Actual
Instrument	ACIS	ACIS	Obspar version number	8	8
Detector	ACIS-7	ACIS-7	Obspar file type	PREDICTED	ACTUAL
Grating	NONE	NONE	Obspar update status	NONE	UPDATED
Data mode	FAINT	FAINT	Number of optional ACIS chips dropped	0	0
Observation mode	POINTING	POINTING	On-chip summing requested	N	N
[deg] Pointing RA	266.584733	266.56997587874	Subarray requested	CUSTOM	1/2
[deg] Pointing Dec	-32.245887	-32.225595460618	Subarray start row	257	257
[deg] Pointing Roll	94.431635	94.577941893103	Subarray row count	512	512
[s] Window start time (MET)	192240064.184000	192240064.184000	Alternating exposures requested	N	N
[s] Window stop time (MET)	193190464.184000	193190464.184000	[s] Primary exposure time	0.000000	1.5
[mm] SIM focus pos	-0.684267	-0.6828225247311905			
[mm] SIM defocus	0	0.001444936568705701			
[mm] SIM translation stage pos	-190.132523	-190.1400660498719			
[mm] SIM translation stage offset	0	0.00754346686406393			
[s] Observation start time (MET)	193005733.184000	193004604.50947			
Observation start date	2004-02-12T20:41:09	2004-02-12T20:23:24			
[s] Observation end time (MET)	193029233.184000	193030151.61059			
Observation end date	2004-02-13T03:12:49	2004-02-13T03:29:11			
Read mode	TIMED	TIMED			

## 2.3 Aspect





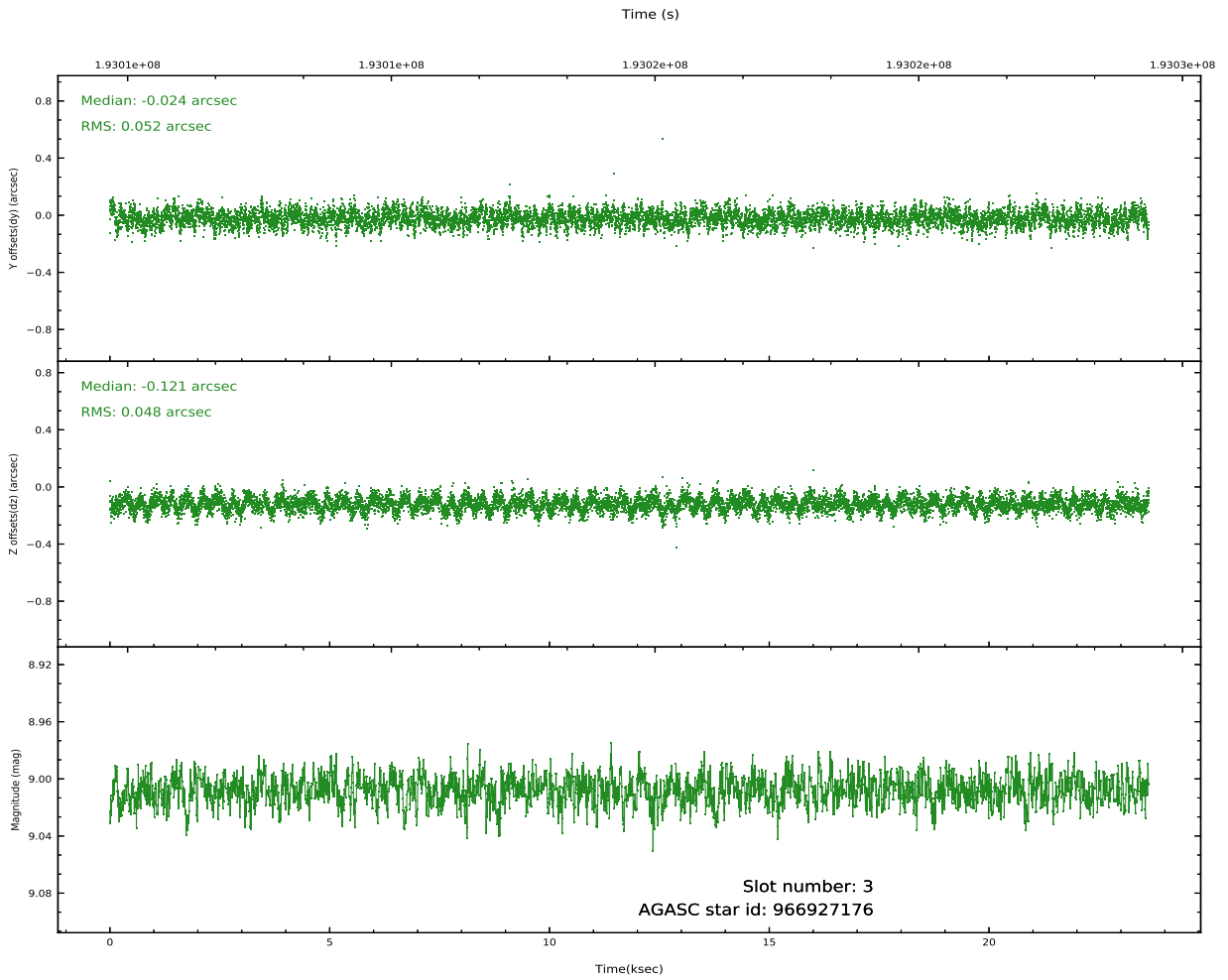
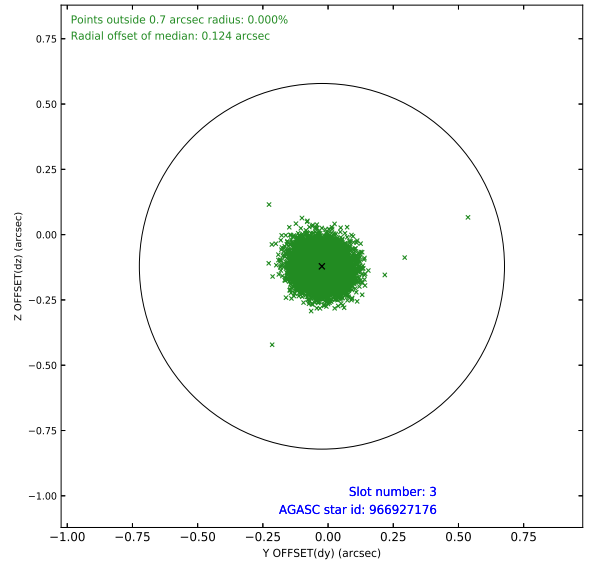
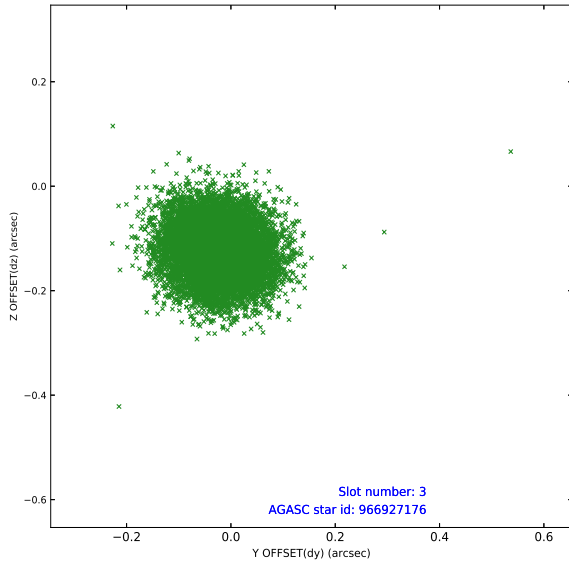
### Slot Statistics

slot	status	used	id	mag	n_pts	frac_pts	med_dy	med_dz	dr1	dr2	ra	dec	mean_y	mean_x
0	FID		ACIS-S-2	7.10	5765	1.000	-0.063	-0.051	0.013	0.020	0.000000	0.000000	-760.38	-1732
1	FID		ACIS-S-4	7.20	5764	1.000	0.137	0.044	0.015	0.022	0.000000	0.000000	2152.98	176
2	FID		ACIS-S-5	7.23	5764	1.000	-0.105	0.016	0.009	0.014	0.000000	0.000000	-1813.14	169
3	GUIDE	used	966927176	9.01	11526	1.000	-0.024	-0.121	0.075	0.121	265.946853	-31.673679	2198.96	1789
4	GUIDE	used	967442688	8.38	11528	1.000	0.039	-0.102	0.055	0.089	266.096113	-32.373763	-347.42	1517
5	GUIDE	used	967446352	7.75	11529	1.000	0.092	0.064	0.051	0.081	267.069988	-32.671157	-1643.24	-1347
6	GUIDE	used	967450832	9.11	11525	1.000	-0.086	-0.052	0.074	0.118	266.078096	-31.879979	1429.16	1442
7	GUIDE	used	967451816	9.26	11521	1.000	-0.023	0.212	0.089	0.146	267.266669	-31.901374	1069.18	-2172

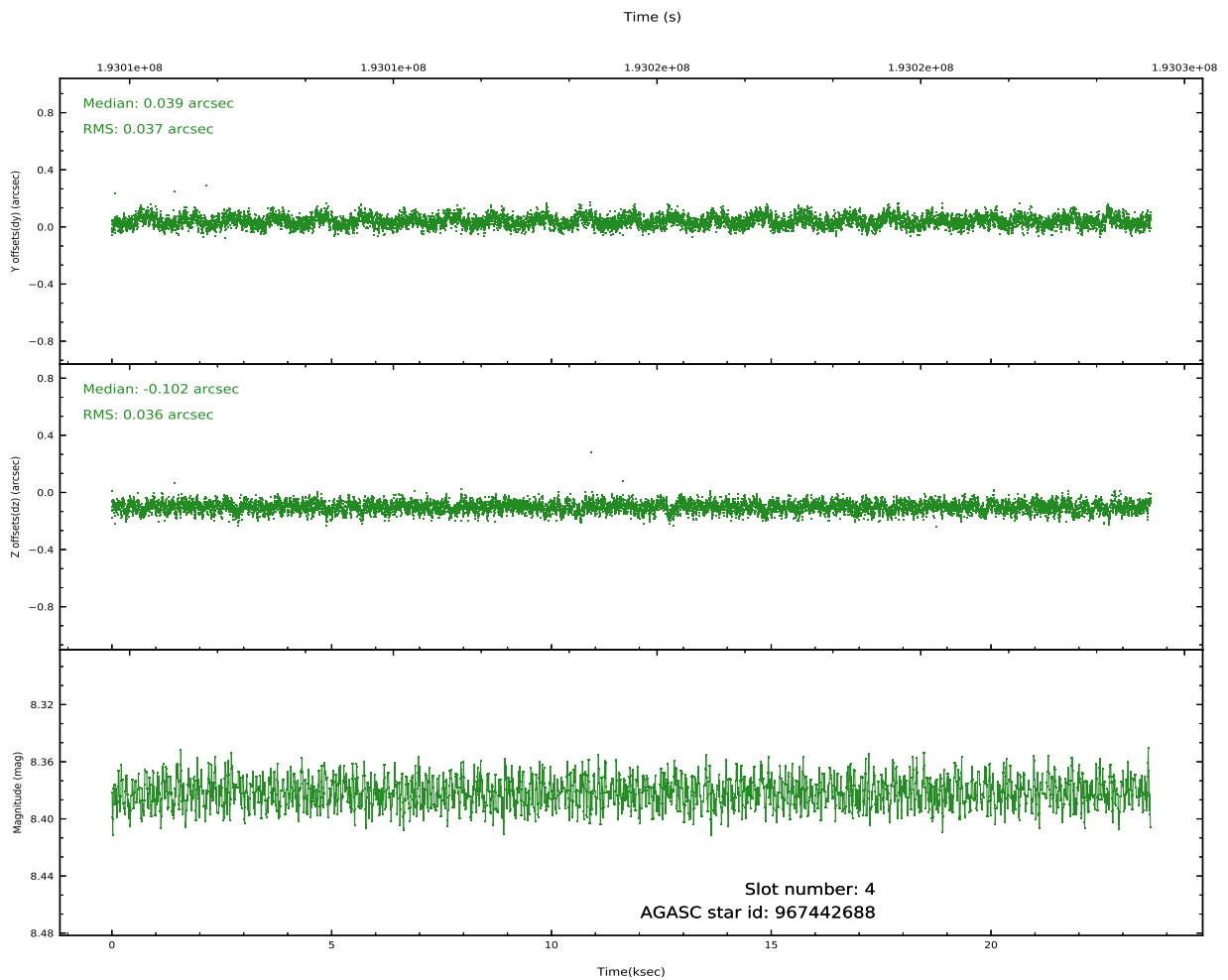
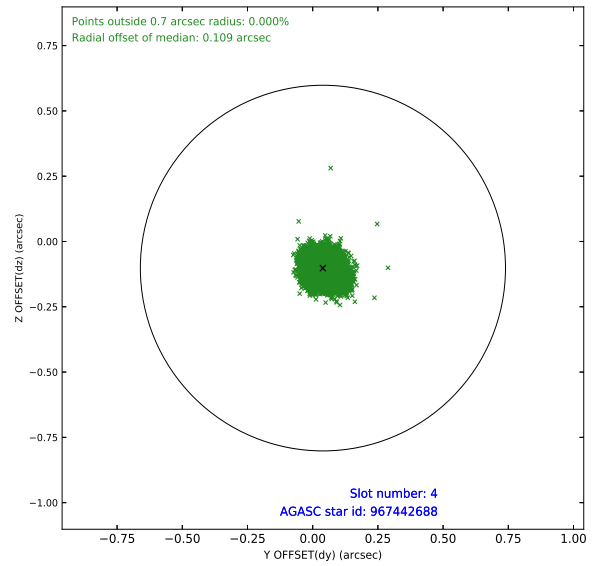
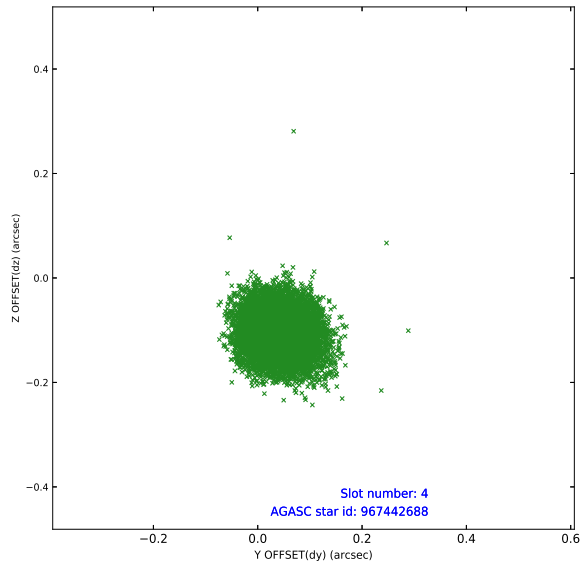
∞

## 2.4 Star Slots

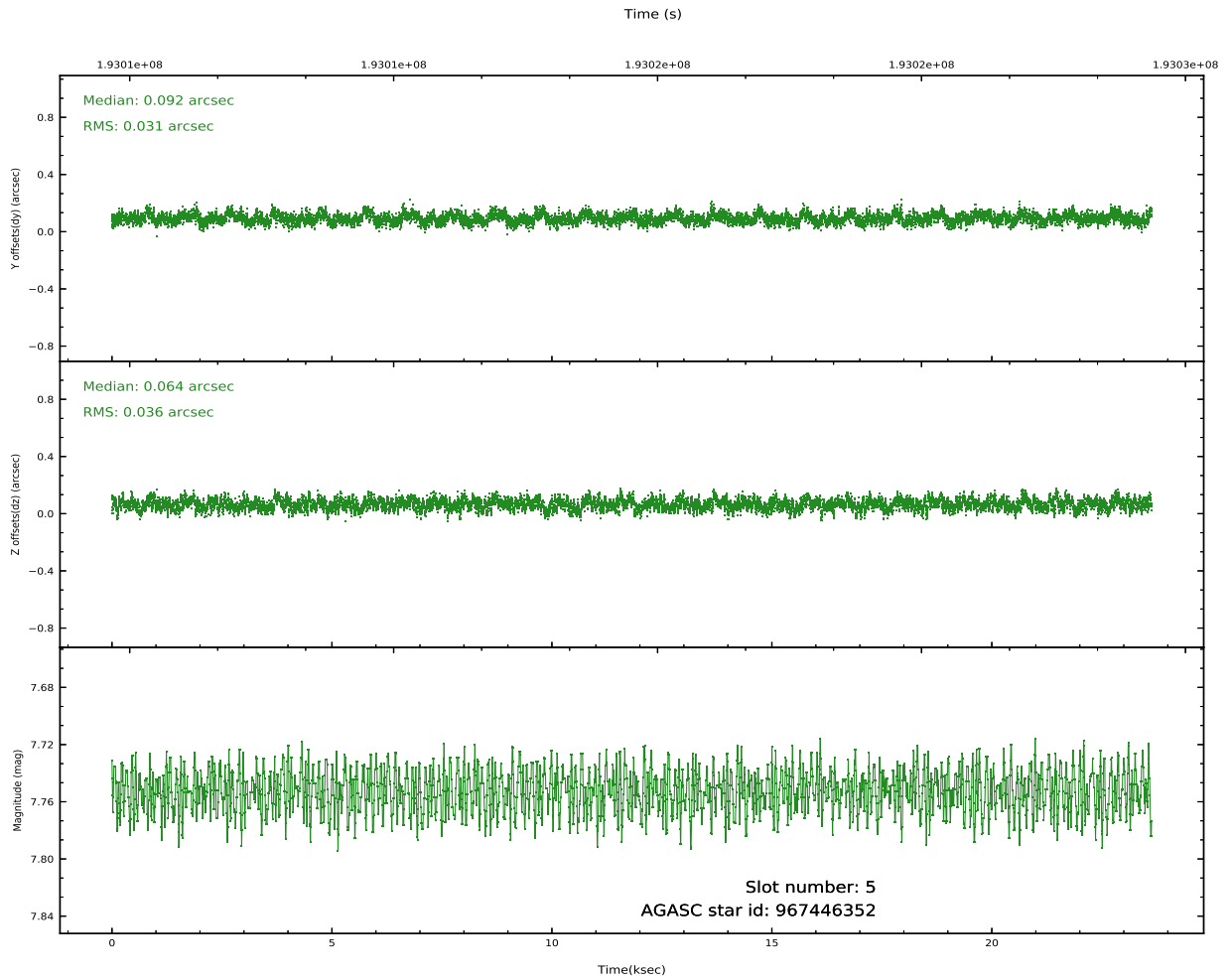
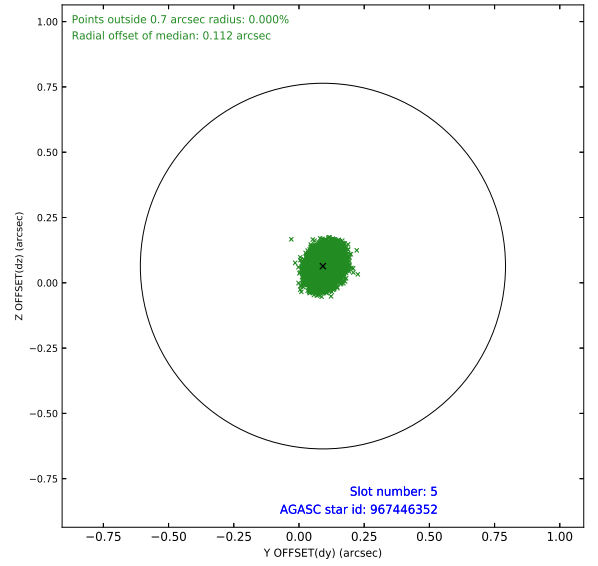
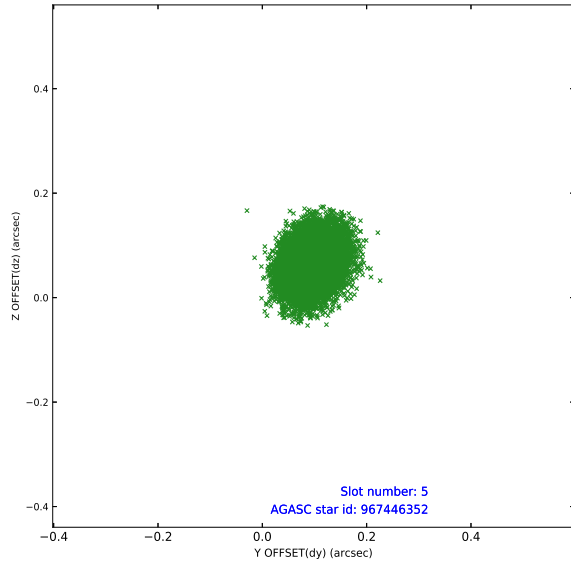
### 2.4.1 Slot 3



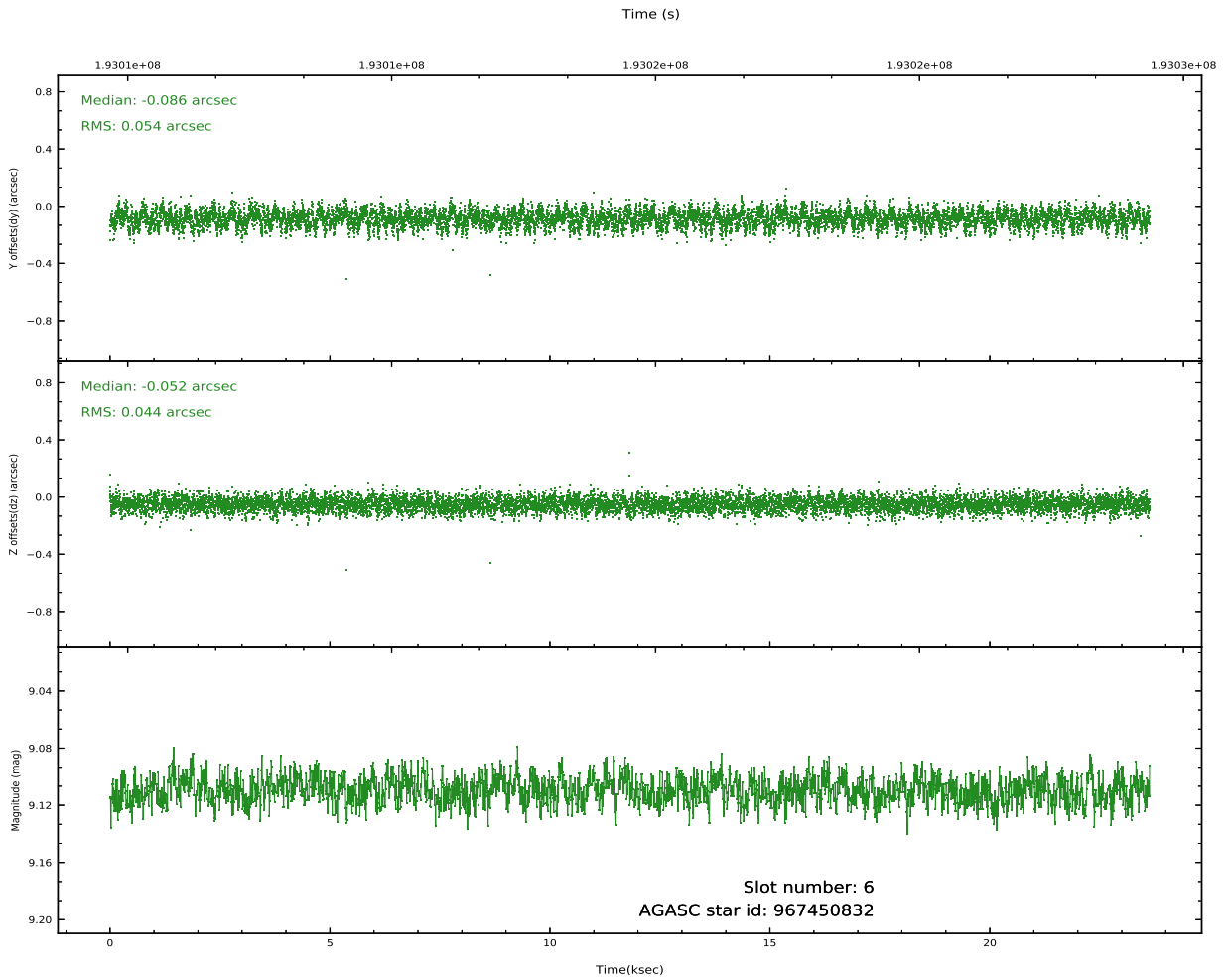
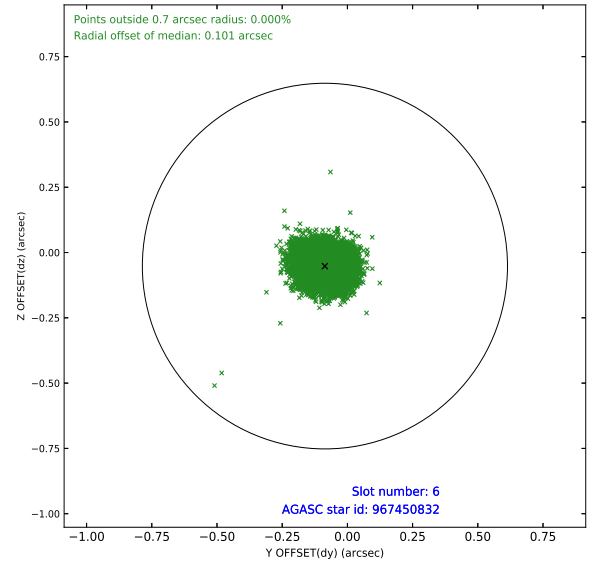
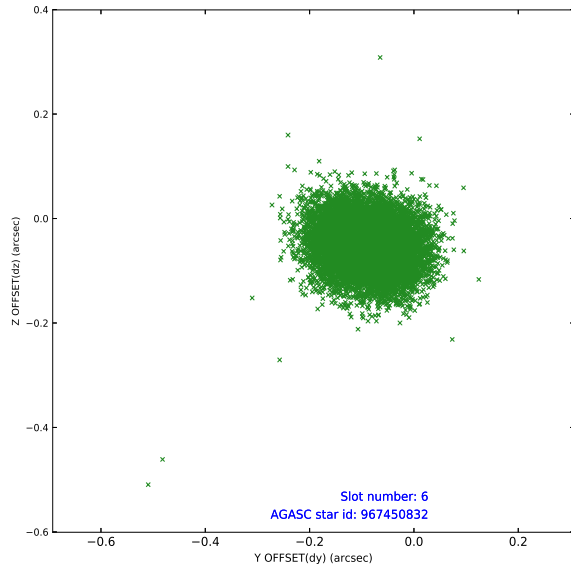
## 2.4.2 Slot 4



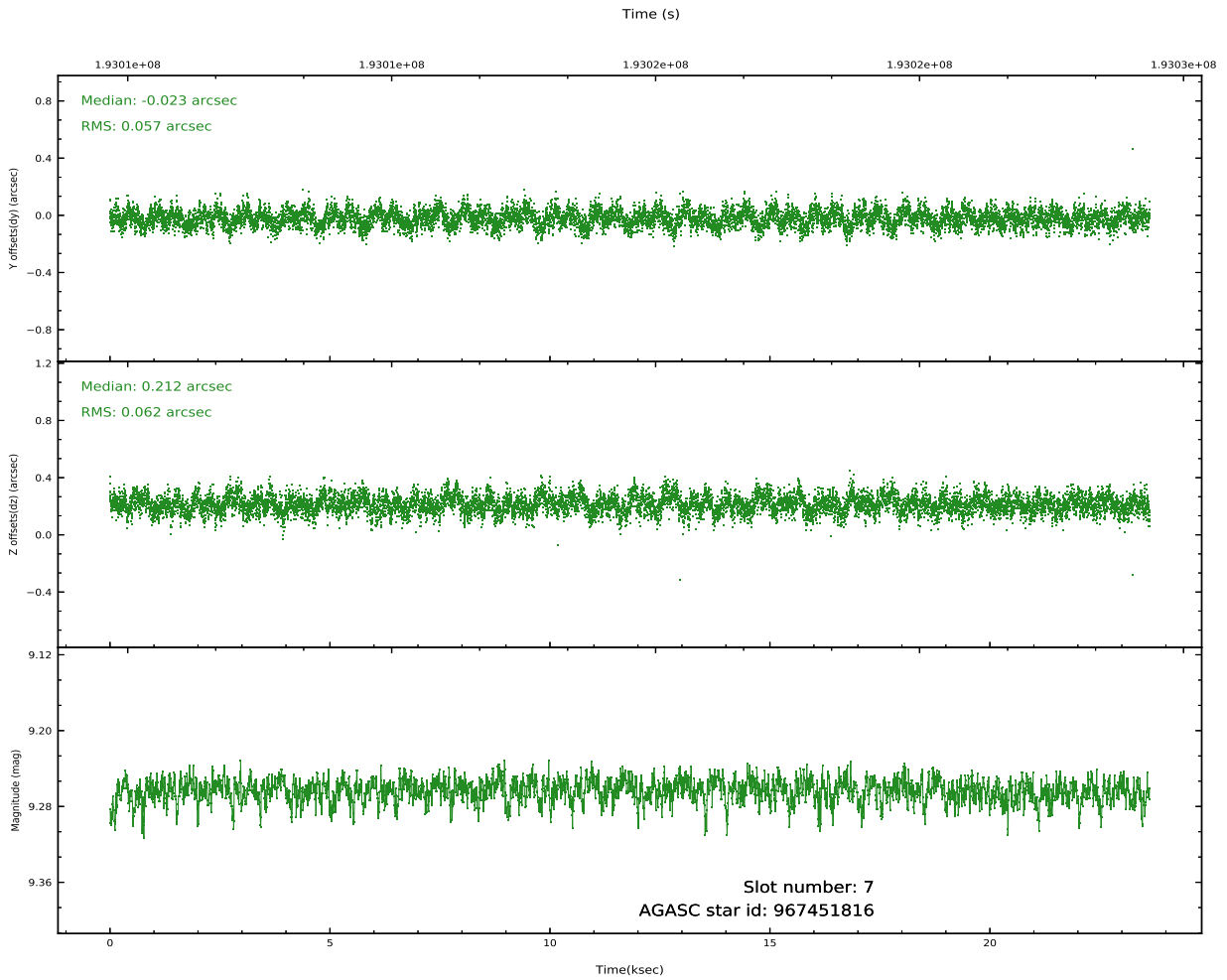
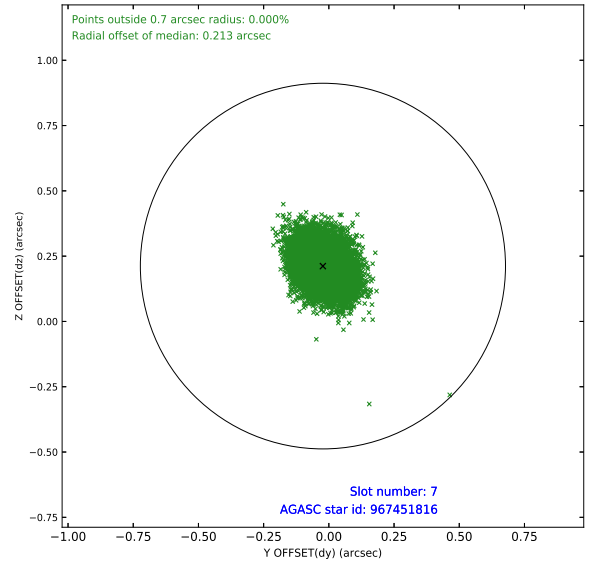
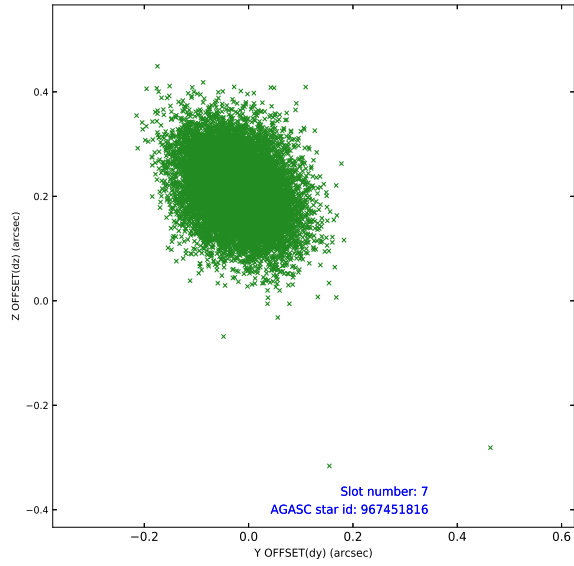
### 2.4.3 Slot 5



## 2.4.4 Slot 6

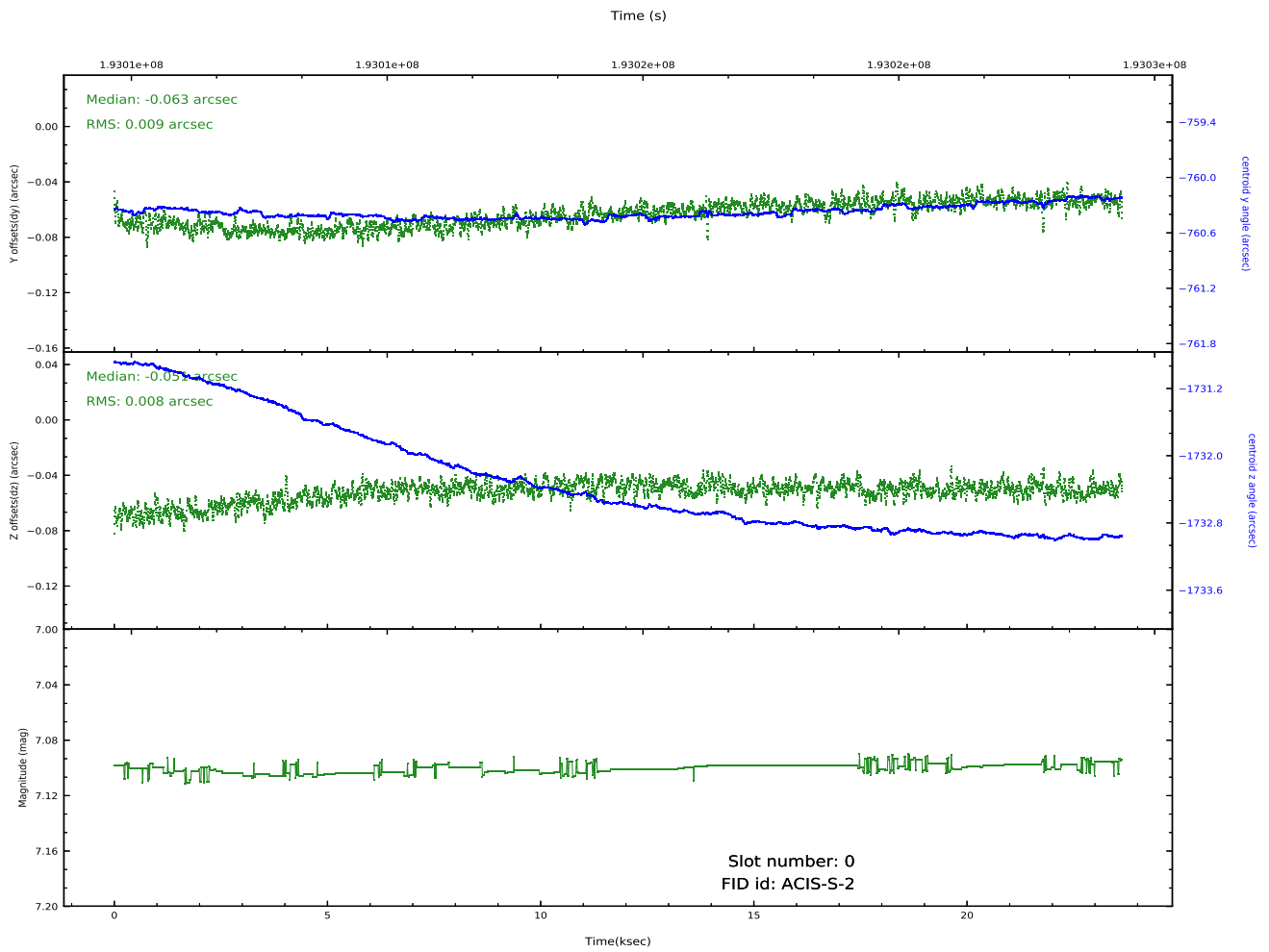
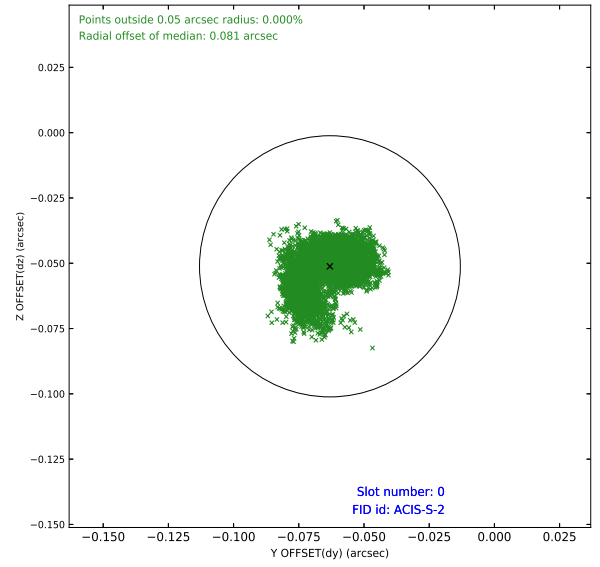
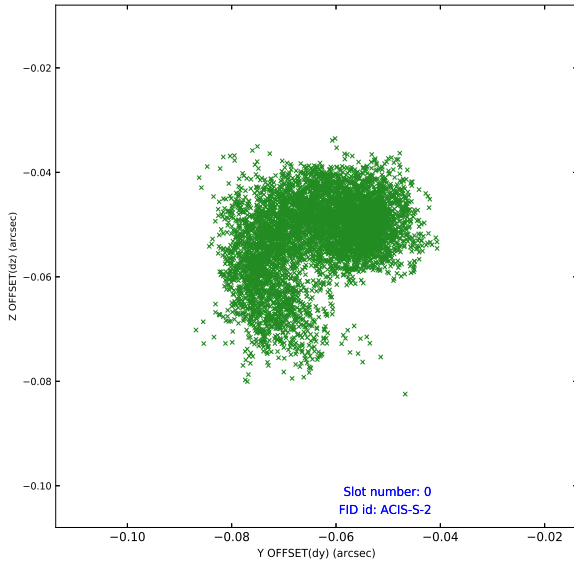


## 2.4.5 Slot 7

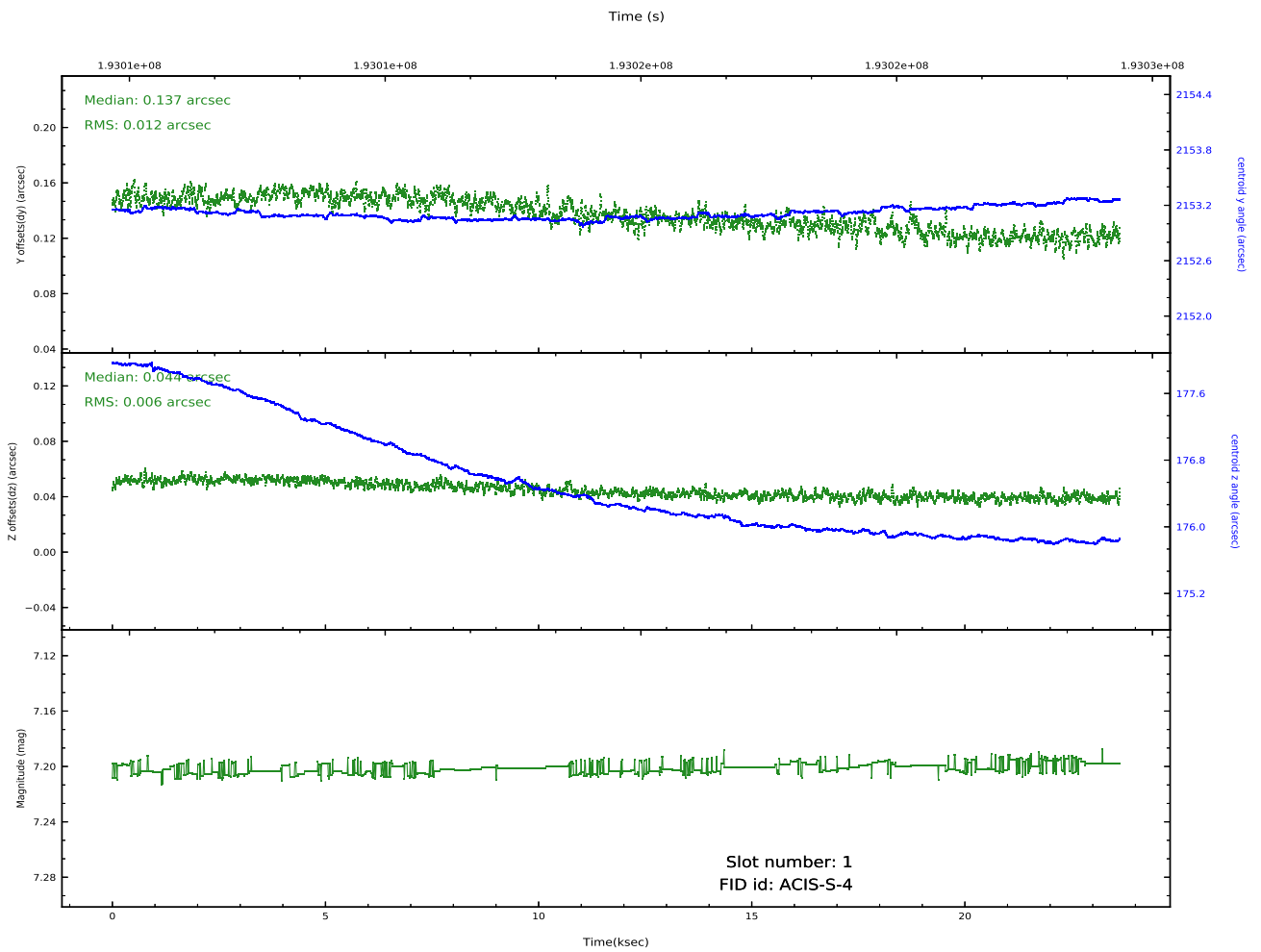
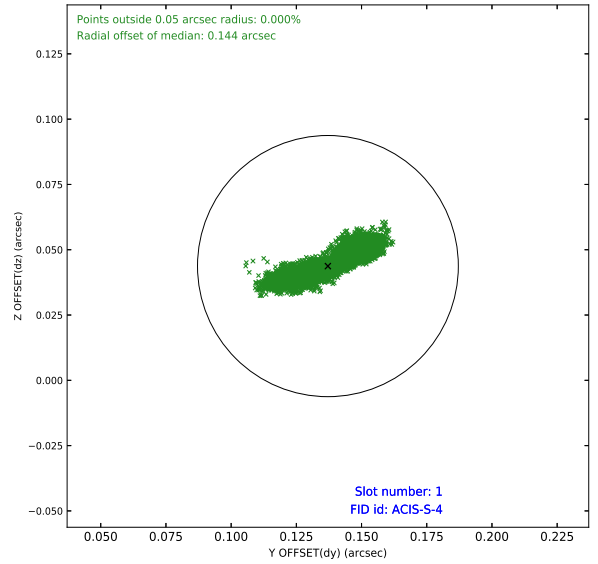
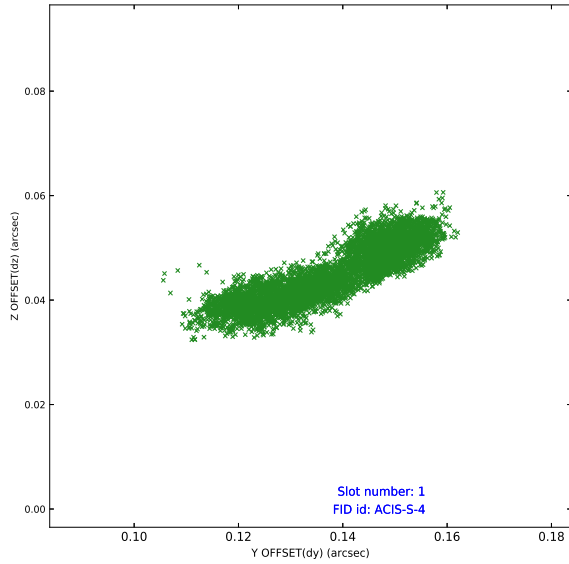


## 2.5 FID Slots

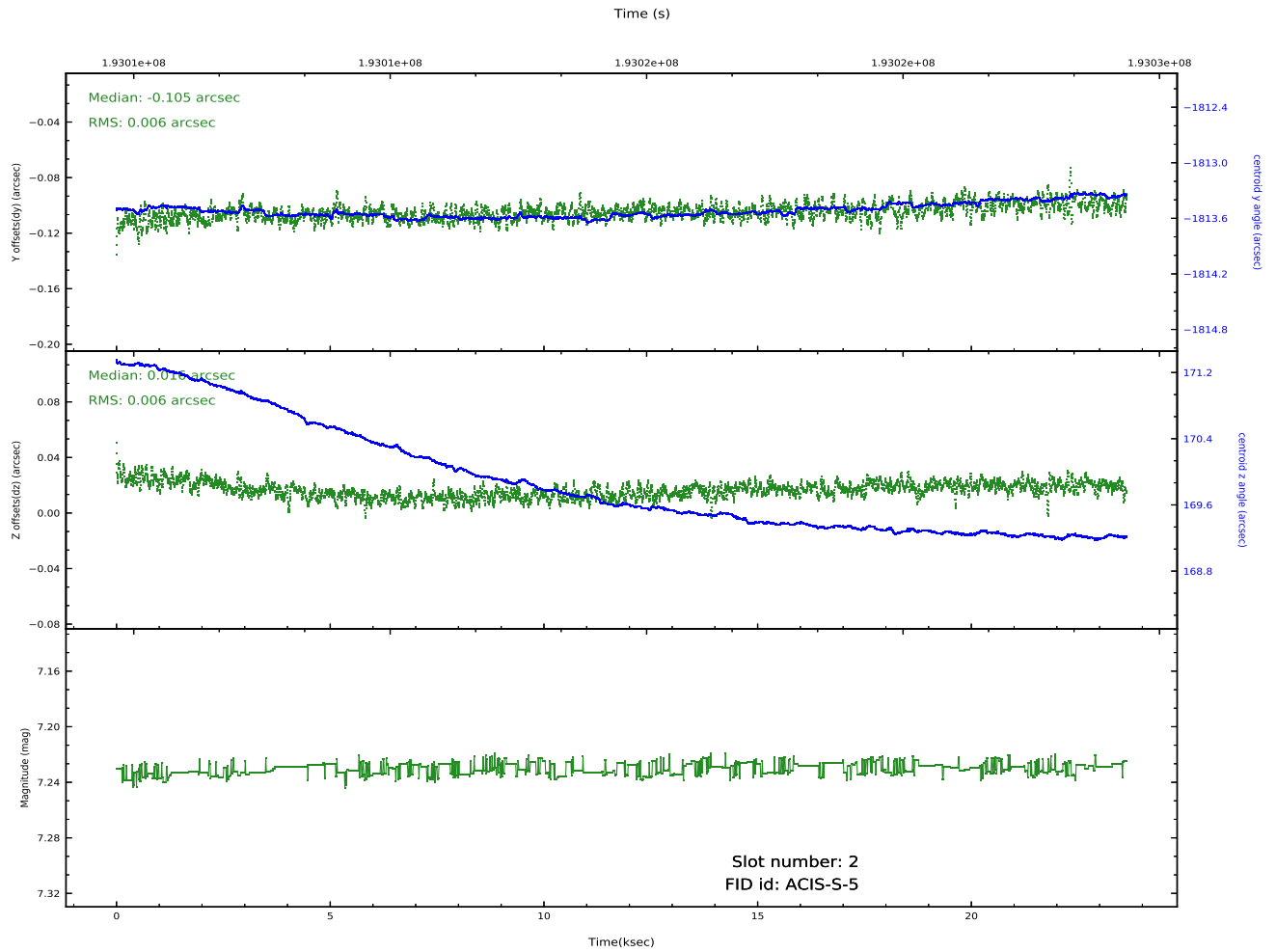
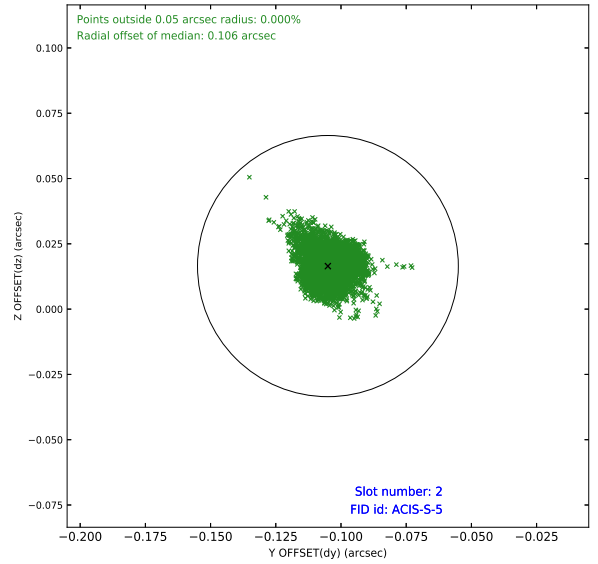
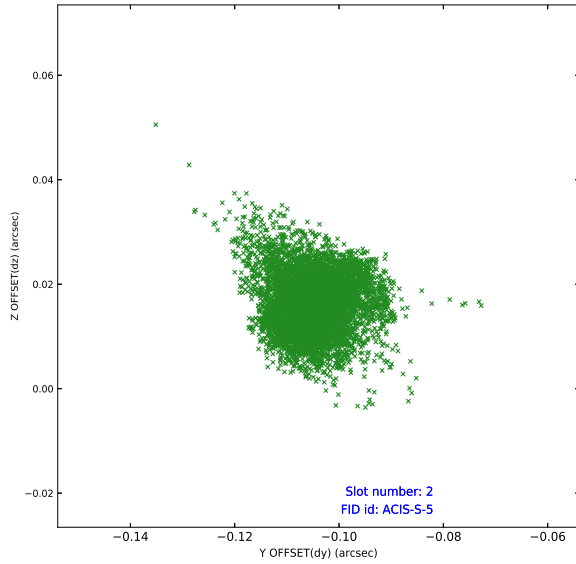
### 2.5.1 Slot 0



## 2.5.2 Slot 1



### 2.5.3 Slot 2



# A Summary

## A.1 Status

V&V Scientist	Beth Sundheim
V&V Date (YYYY-MM-DD)	2020.09.23
V&V Edition	1
V&V Disposition and Status	OK
V&V Charge Time	23.632

## A.2 Comments

Window constraint met.