

V&V Reference Report

L2 ASCDS Version : 8.5

Observation 4725 - L2 Version 3
Chandra X-Ray Center

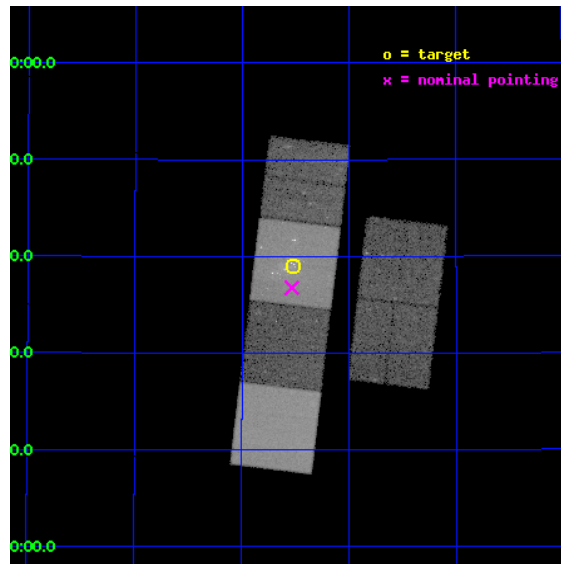
L2 Processing Date : Dec 6 2012

Contents

1	Front	2
2	OBI	3
2.1	OBI	3
2.1.1	Images	3
2.1.2	Bias	3
2.1.3	Parameters	4
2.1.4	Events	4
2.2	Compared Parameters	5
2.3	Aspect	6
2.4	Star Slots	9
2.4.1	Slot 3	9
2.4.2	Slot 4	10
2.4.3	Slot 5	11
2.4.4	Slot 6	12
2.4.5	Slot 7	13
2.5	FID Slots	14
2.5.1	Slot 0	14
2.5.2	Slot 1	15
2.5.3	Slot 2	16
A	Summary	17
A.1	Status	17
A.2	Comments	17

1 Front

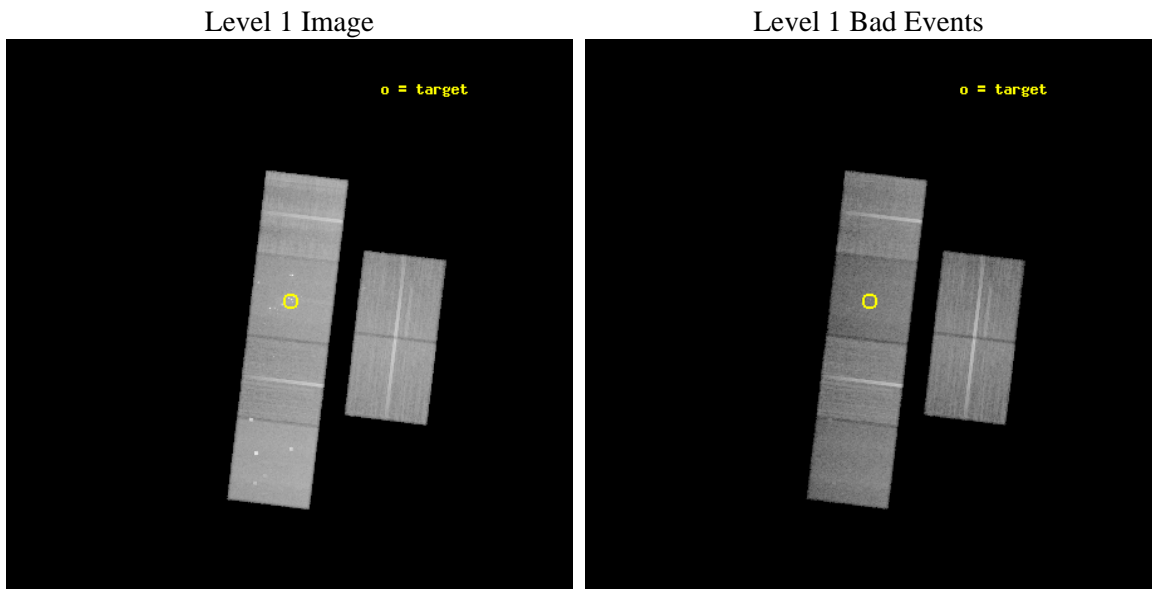
seq_num	600380	Sequence number
obs_id	4725	Observation id
title	The ultraluminous X-ray sources of NGC 4485/4490	Proposal title
observer	Dr Timothy Roberts	Principal investigator
object	NGC 4485/4490	Source name
dtycle	0	
cycle	P	events from which exps? Prim/Second/Both
ra_targ	187.63	Observer's specified target RA [deg]
dec_targ	41.65	Observer's specified target Dec [deg]
ra_nom	187.63359986001	Nominal RA [deg]
dec_nom	41.612677168373	Nominal Dec [deg]
roll_nom	276.83100525843	Nominal Roll [deg]
revision	3	Processing version of data
ontime	38959.941156298	Sum of GTIs [s]
livetime	38466.606922517	Livetime [s]
ontime2	38953.500275731	Sum of GTIs [s]
ontime3	38953.336185455	Sum of GTIs [s]
ontime5	38959.900116295	Sum of GTIs [s]
ontime6	38956.618116021	Sum of GTIs [s]
ontime7	38959.941156298	Sum of GTIs [s]
ontime8	38956.536036044	Sum of GTIs [s]
l2events	345689	Number of level 2 events



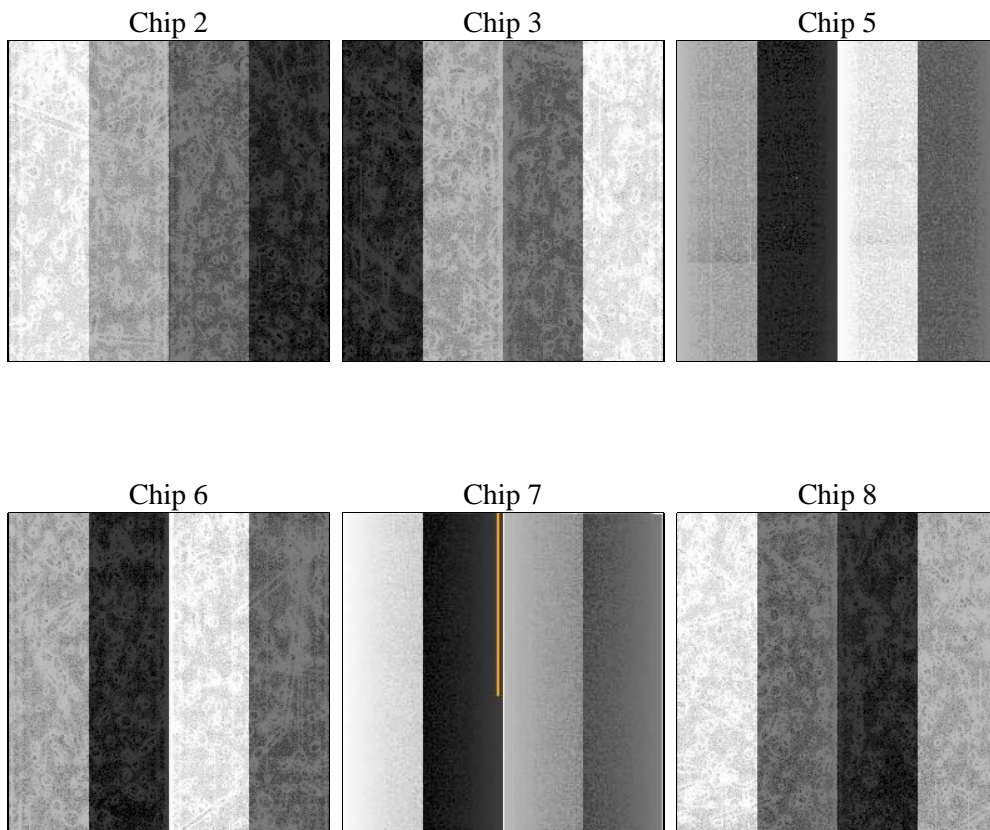
2 OBI

2.1 OBI

2.1.1 Images



2.1.2 Bias



2.1.3 Parameters

obi_num	3	Obi number	sched_exp_time	39000.000000	[s] Scheduled observation exposure time
ascdsver	8.5	Processing system revision	ontime	38959.941156298	Sum of GTIs [s]
caldsver	4.5.4	 	ontime2	38953.500275731	Sum of GTIs [s]
date	2012-12-06T23:51:42	Date and time of file creation	ontime3	38953.336185455	Sum of GTIs [s]
revision	3	Processing version of data	ontime5	38959.900116295	Sum of GTIs [s]
			ontime6	38956.618116021	Sum of GTIs [s]
			ontime7	38959.941156298	Sum of GTIs [s]
			ontime8	38956.536036044	Sum of GTIs [s]
			l1events	1548739	Number of level 1 events

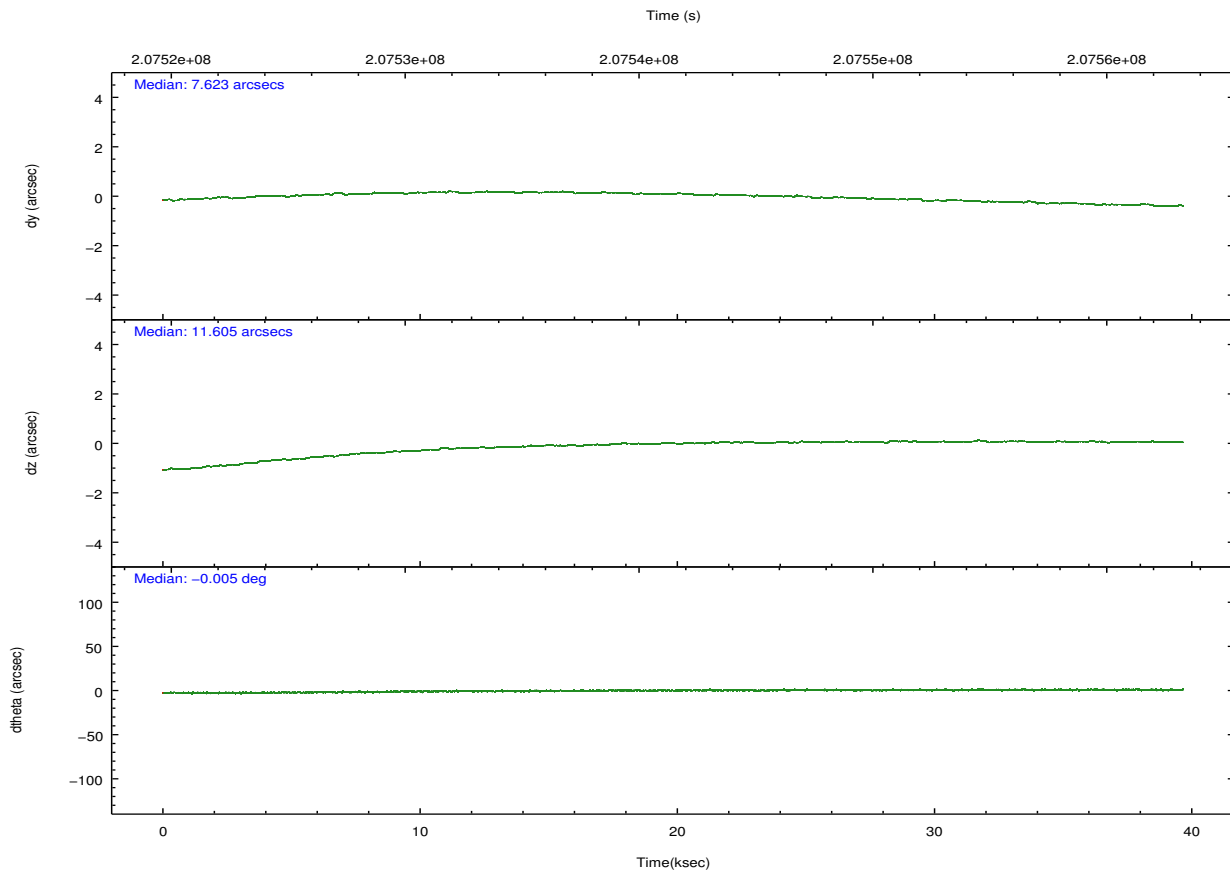
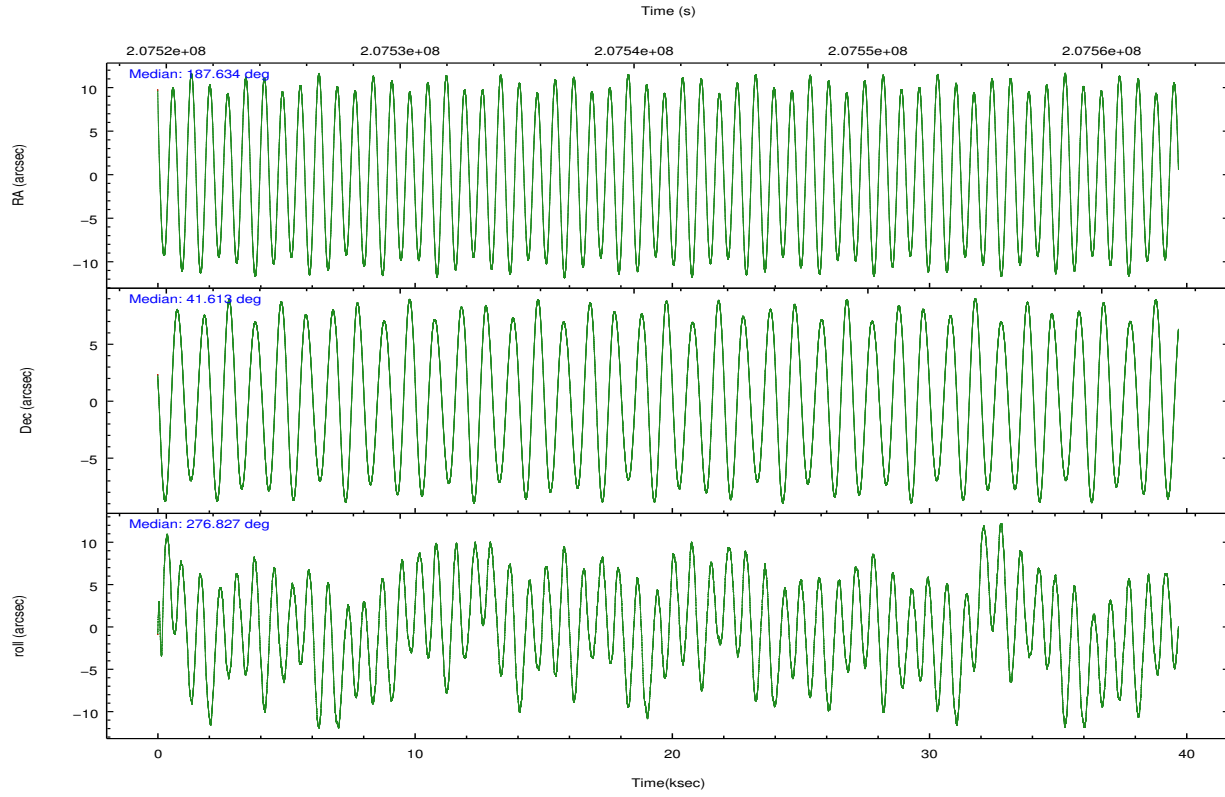
2.1.4 Events

	ccd 2	ccd 3	ccd 5	ccd 6	ccd 7	ccd 8		ccd 2	ccd 3	ccd 5	ccd 6	ccd 7	ccd 8
level 1 events	238176	216464	306996	228344	262650	296109	grade 0 events	8259	7371	19298	8440	14262	23965
rejected events	215331	195650	152570	204780	135027	218575		3%	3%	6%	3%	5%	8%
rejected %	90%	90%	49%	89%	51%	73%	grade 1 events	113	118	355	104	240	251
								0%	0%	0%	0%	0%	0%
							grade 2 events	5421	4482	43601	5029	26478	15908
								2%	2%	14%	2%	10%	5%
							grade 3 events	2481	2465	7135	2617	12655	9583
								1%	1%	2%	1%	4%	3%
							grade 4 events	2517	2372	6596	2504	12339	8786
								1%	1%	2%	1%	4%	2%
							grade 5 events	7575	8533	24524	8804	26674	12857
								3%	3%	7%	3%	10%	4%
							grade 6 events	4168	4126	77810	4975	61899	19338
								1%	1%	25%	2%	23%	6%
							grade 7 events	207642	186997	127677	195871	108103	205421
								87%	86%	41%	85%	41%	69%

2.2 Compared Parameters

Parameter	Planned	Actual	Parameter	Planned	Actual
Instrument	ACIS	ACIS	Obspar format version number	7	7
Detector	ACIS-235678	ACIS-235678	Obspar file type	PREDICTED	ACTUAL
Grating	NONE	NONE	Obspar update status	NONE	UPDATED
Data mode	VFAINT	VFAINT	Number of optional ACIS chips dropped	0	0
Observation mode	POINTING	POINTING	On-chip summing requested	N	N
[deg] Pointing RA	187.611364	187.6335998600141	Subarray requested	NONE	NONE
[deg] Pointing Dec	41.634267	41.612677168373	Alternating exposures requested	N	N
[deg] Pointing Roll	276.689153	276.831005258429	[s] Primary exposure time	0.000000	3.2
[mm] SIM focus pos	-0.684267	-0.6828225247311905			
[mm] SIM defocus	0	0.001444936568705701			
[mm] SIM translation stage pos	-190.132523	-190.1400660498719			
[mm] SIM translation stage offset	0	0.00754346686406393			
[s] Observation start time (MET)	207522295.184000	207521083.08716			
Observation start date	2004-07-29T21:03:51	2004-07-29T20:44:43			
[s] Observation end time (MET)	207561295.184000	207561576.73896			
Observation end date	2004-07-30T07:53:51	2004-07-30T07:59:36			
Read mode	TIMED	TIMED			

2.3 Aspect

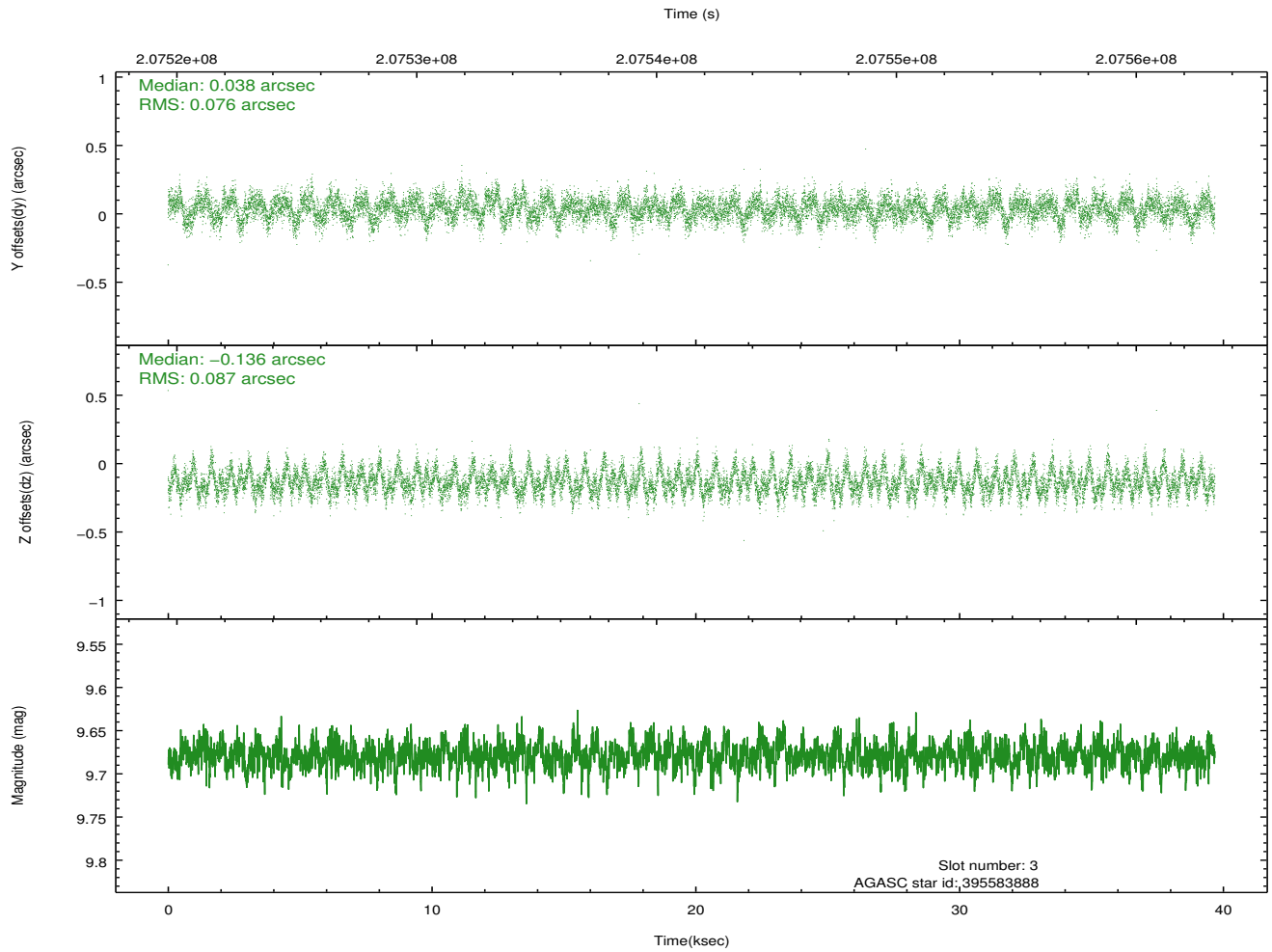
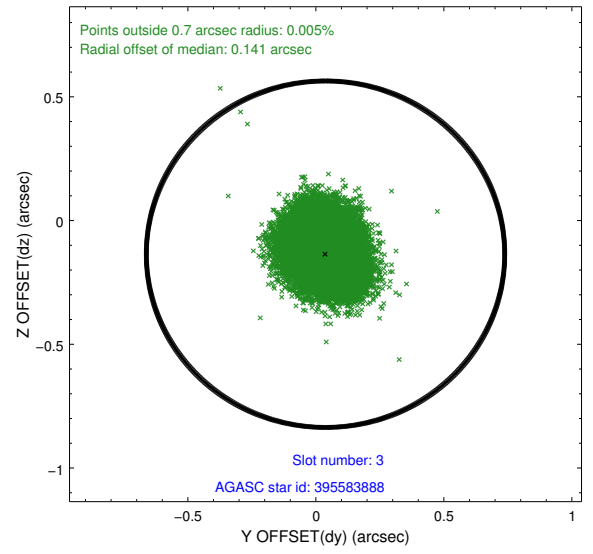
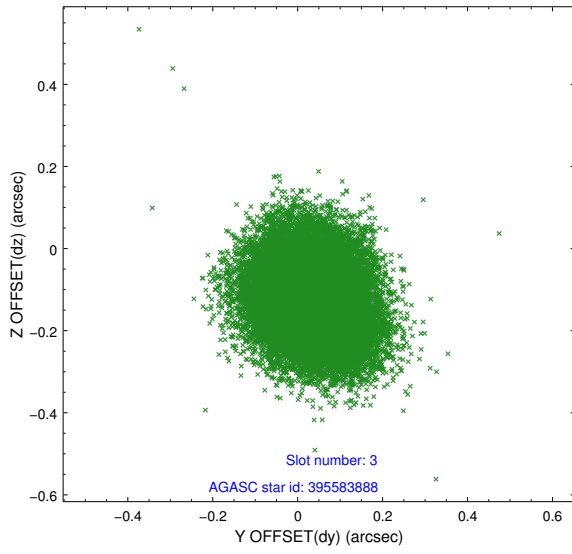


Slot Statistics

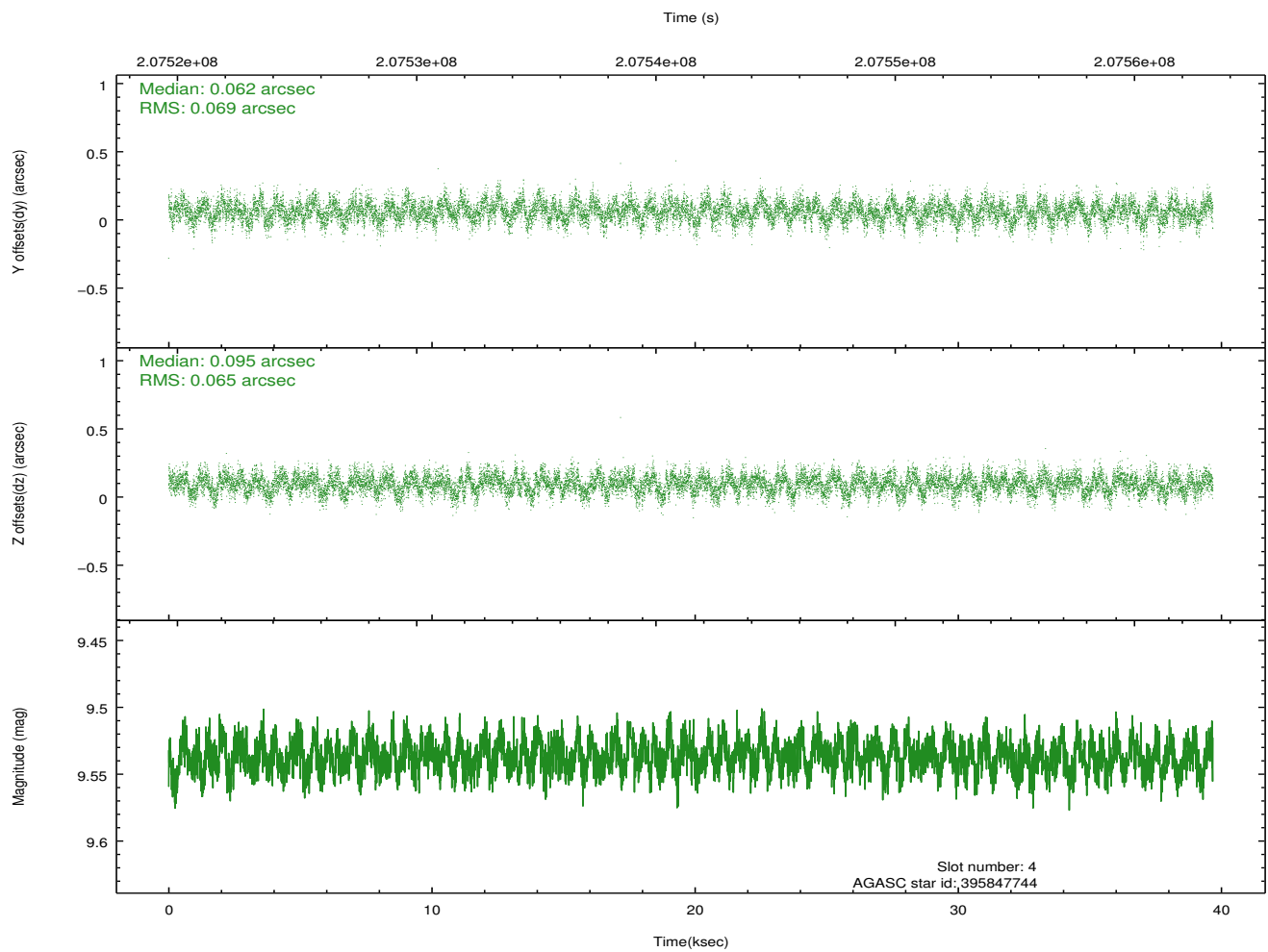
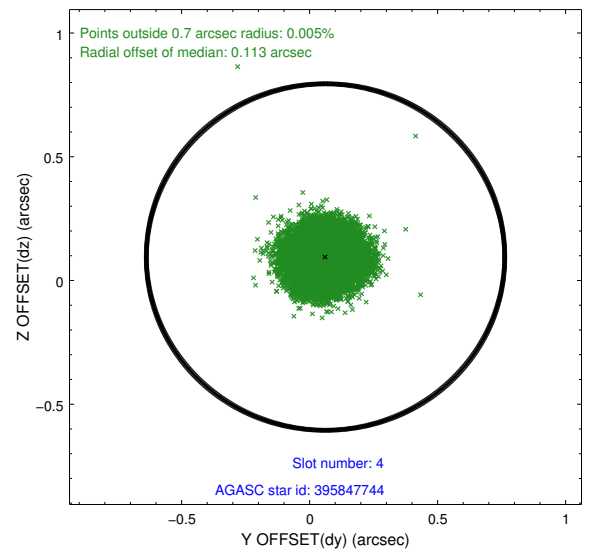
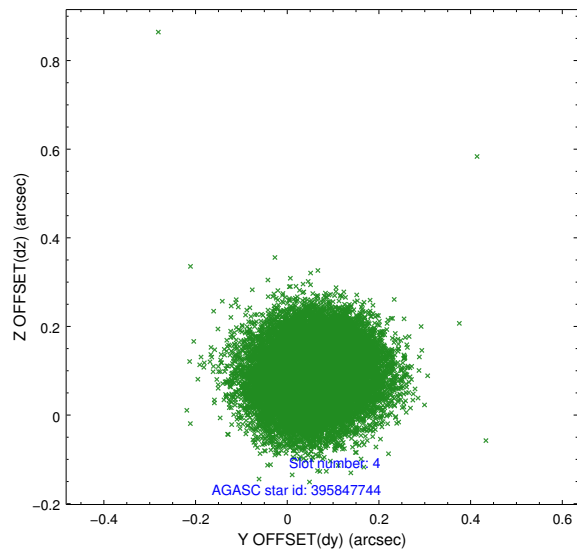
slot	status	id	mag	n_pts	med_dy	med_dz	dr1	dr2	ra	dec	mean_y	mean_z
0	FID	ACIS-S-2	7.10	9680	-0.024	-0.013	0.009	0.018	0.000000	0.000000	-760.36	-1732.74
1	FID	ACIS-S-4	7.20	9679	0.071	0.015	0.013	0.021	0.000000	0.000000	2152.98	175.78
2	FID	ACIS-S-5	7.23	9680	-0.076	0.006	0.011	0.018	0.000000	0.000000	-1813.25	169.42
3	GUIDE	395583888	9.68	19342	0.038	-0.136	0.125	0.197	187.778753	41.111279	1922.54	231.74
4	GUIDE	395847744	9.54	19339	0.062	0.095	0.101	0.159	187.588656	41.269628	1297.13	-213.43
5	GUIDE	395851440	9.33	19346	-0.152	0.020	0.094	0.148	187.131494	42.071574	-1716.24	-1089.78
6	GUIDE	395582784	10.19	19345	0.222	-0.103	0.136	0.231	186.865042	40.916080	2323.42	-2316.50
7	GUIDE	395841840	10.25	19338	-0.168	0.115	0.167	0.281	188.237245	42.332306	-2307.75	1947.99

2.4 Star Slots

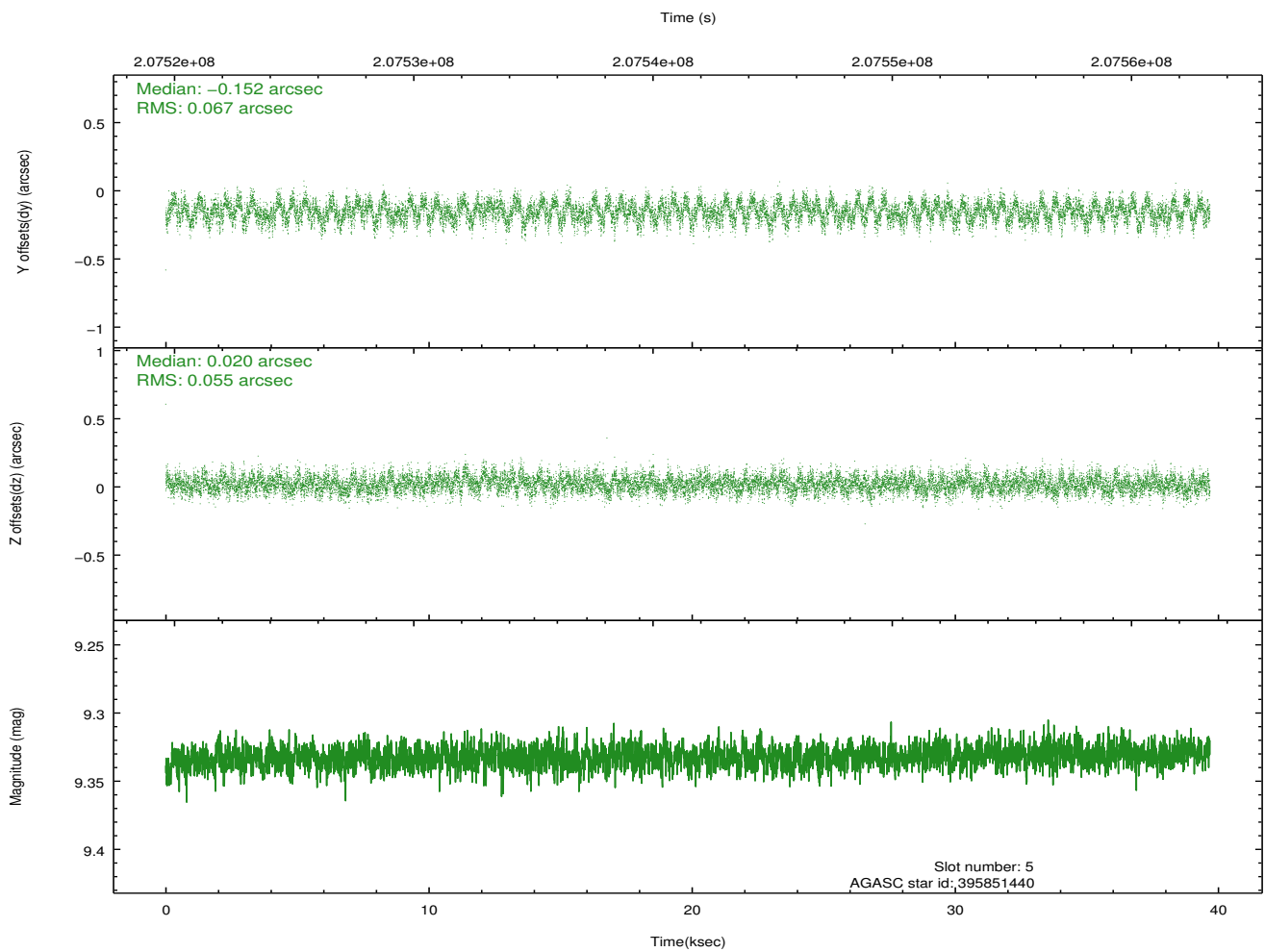
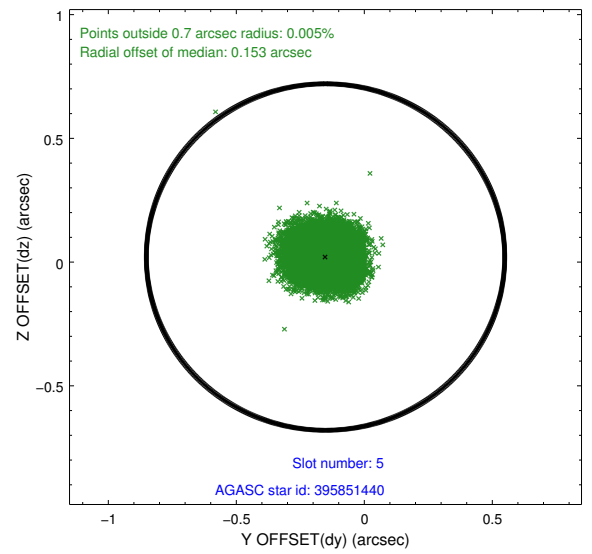
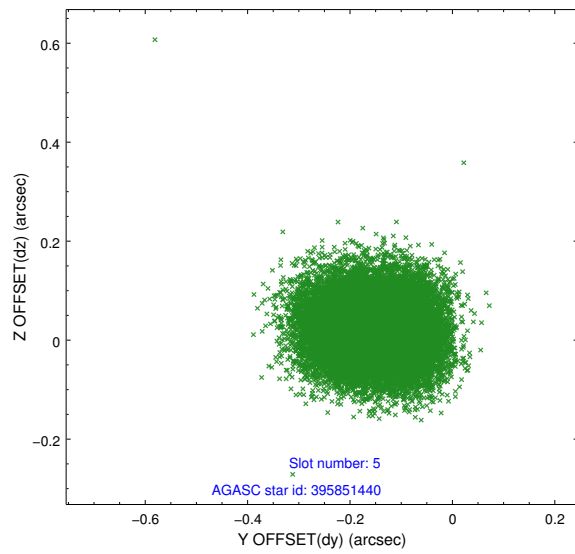
2.4.1 Slot 3



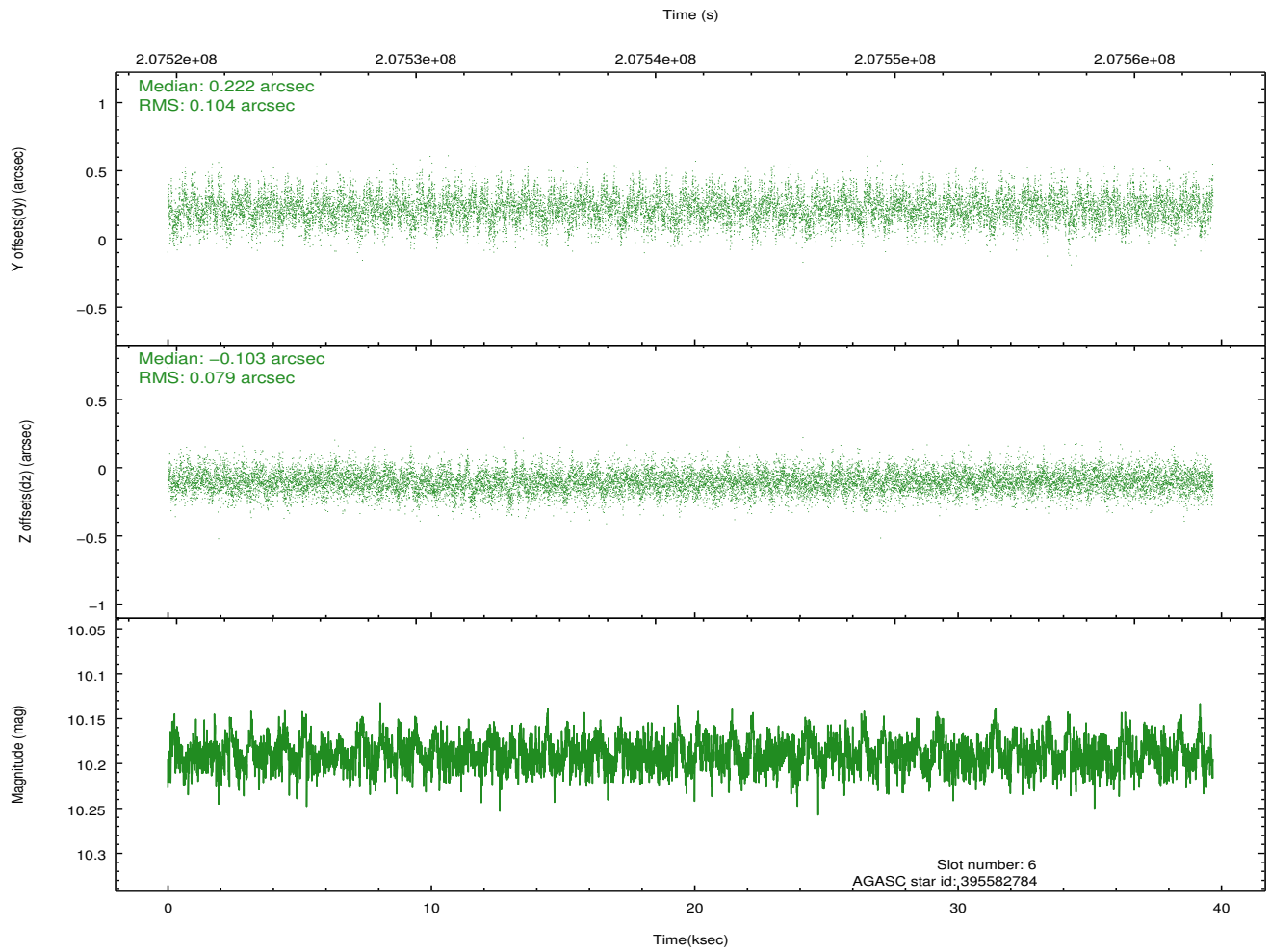
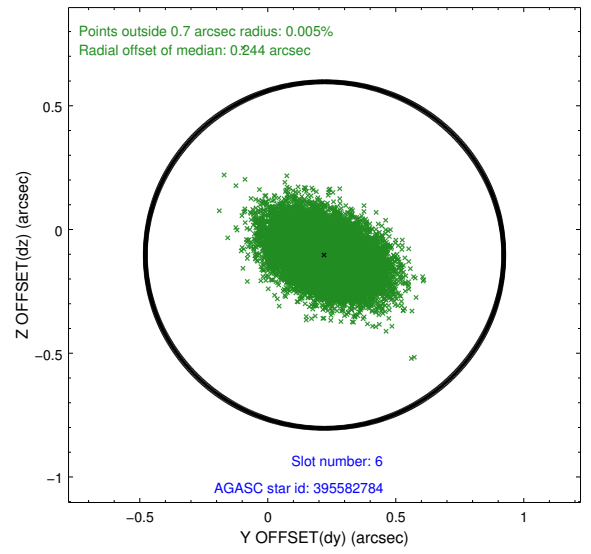
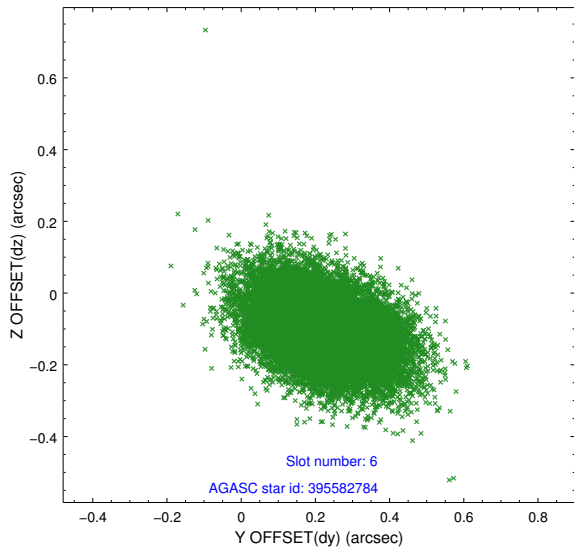
2.4.2 Slot 4



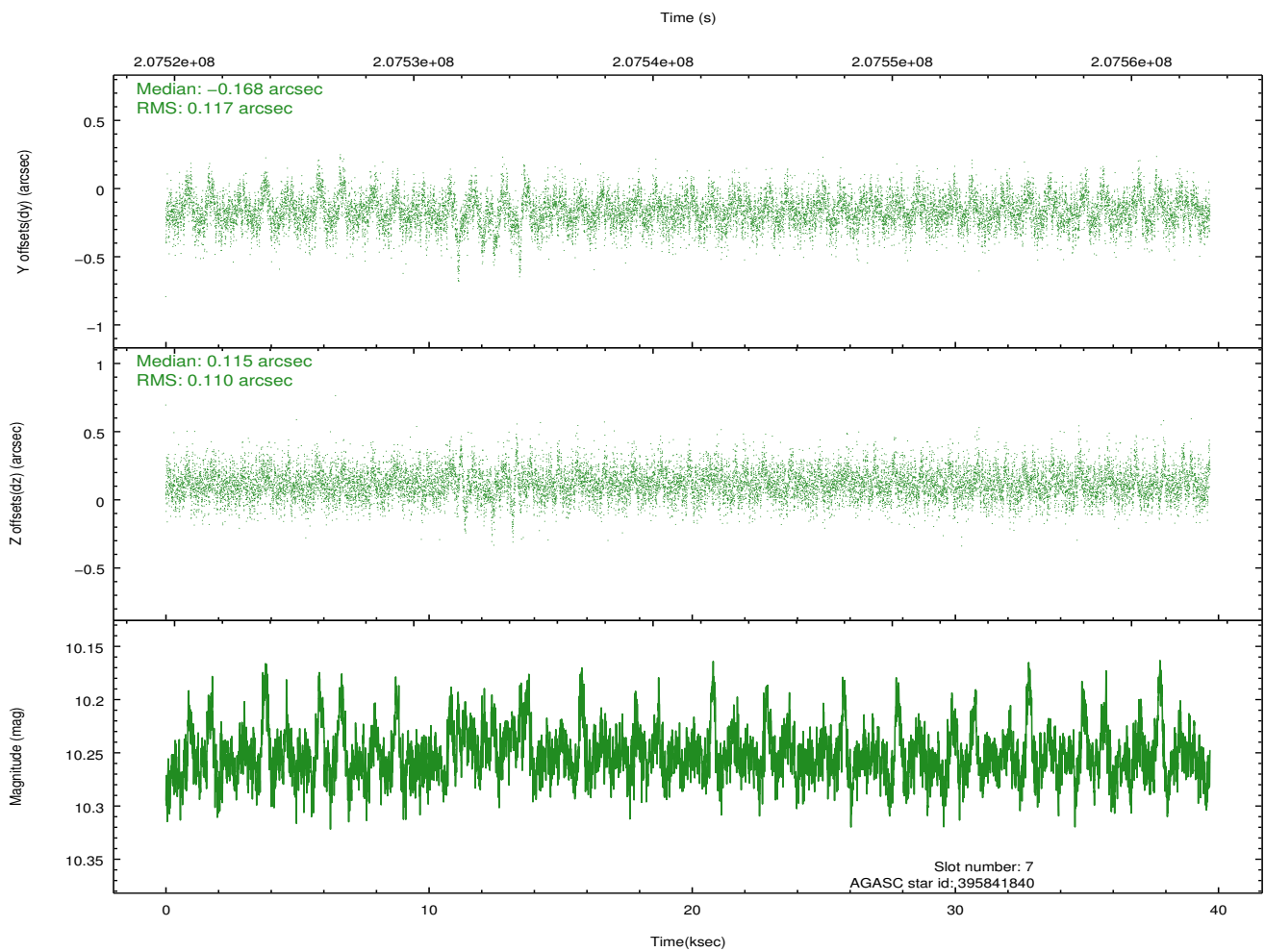
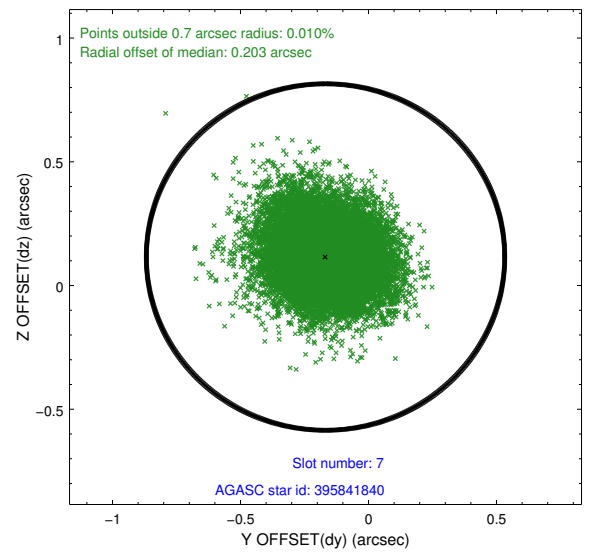
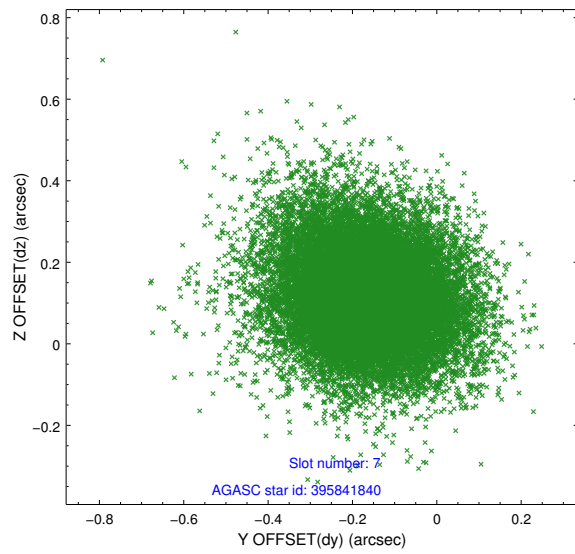
2.4.3 Slot 5



2.4.4 Slot 6

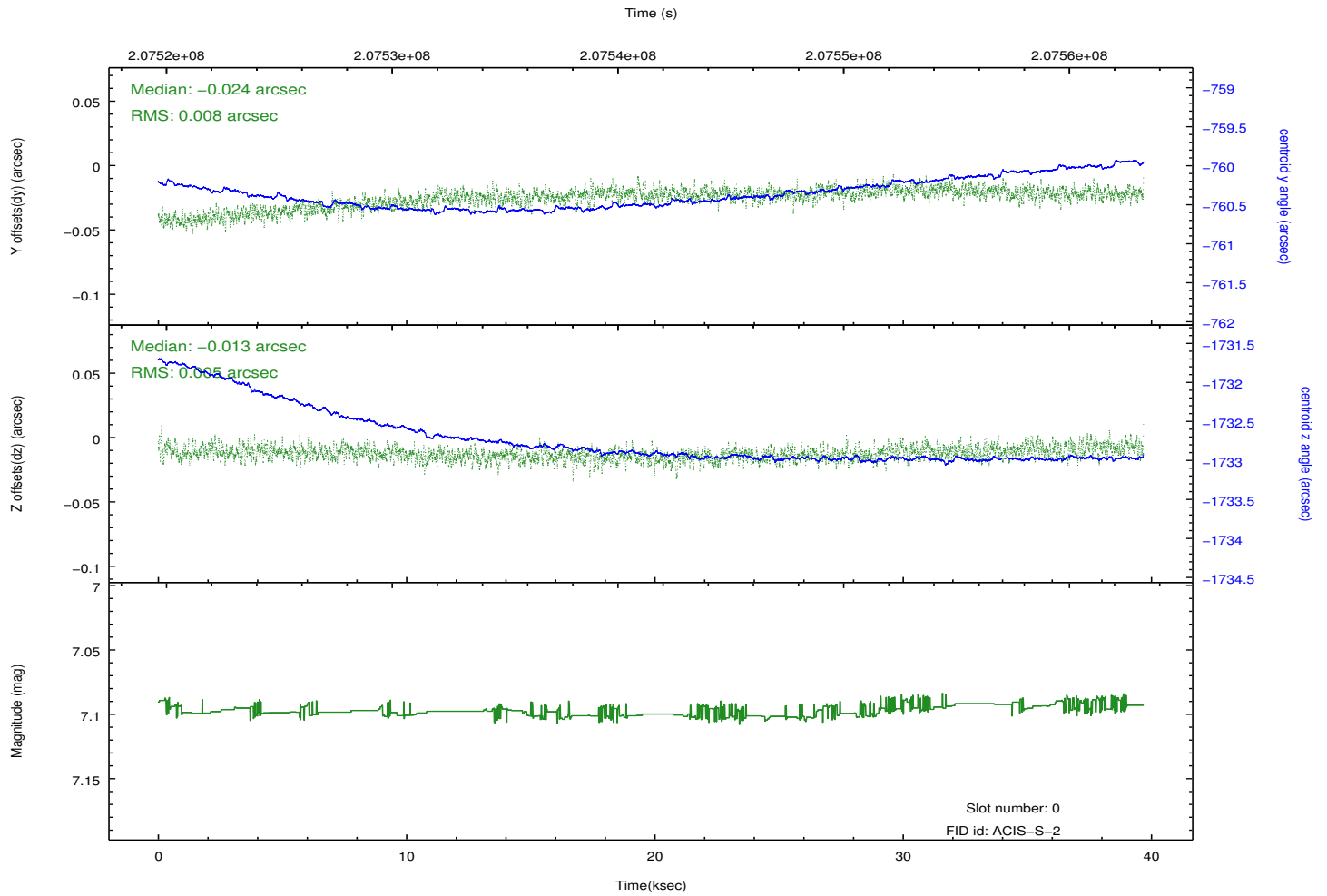
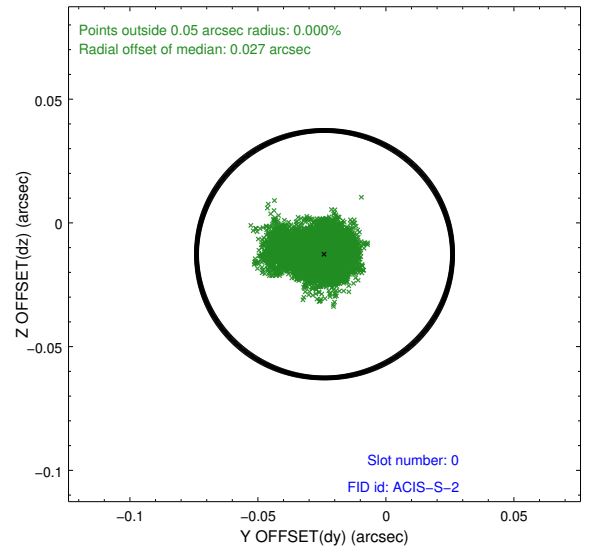
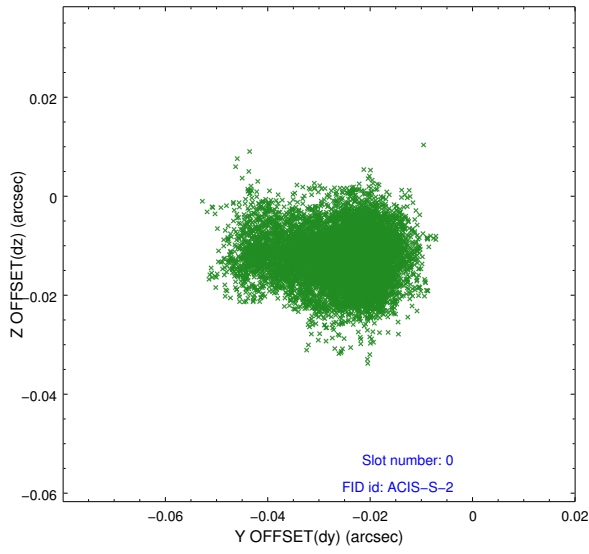


2.4.5 Slot 7

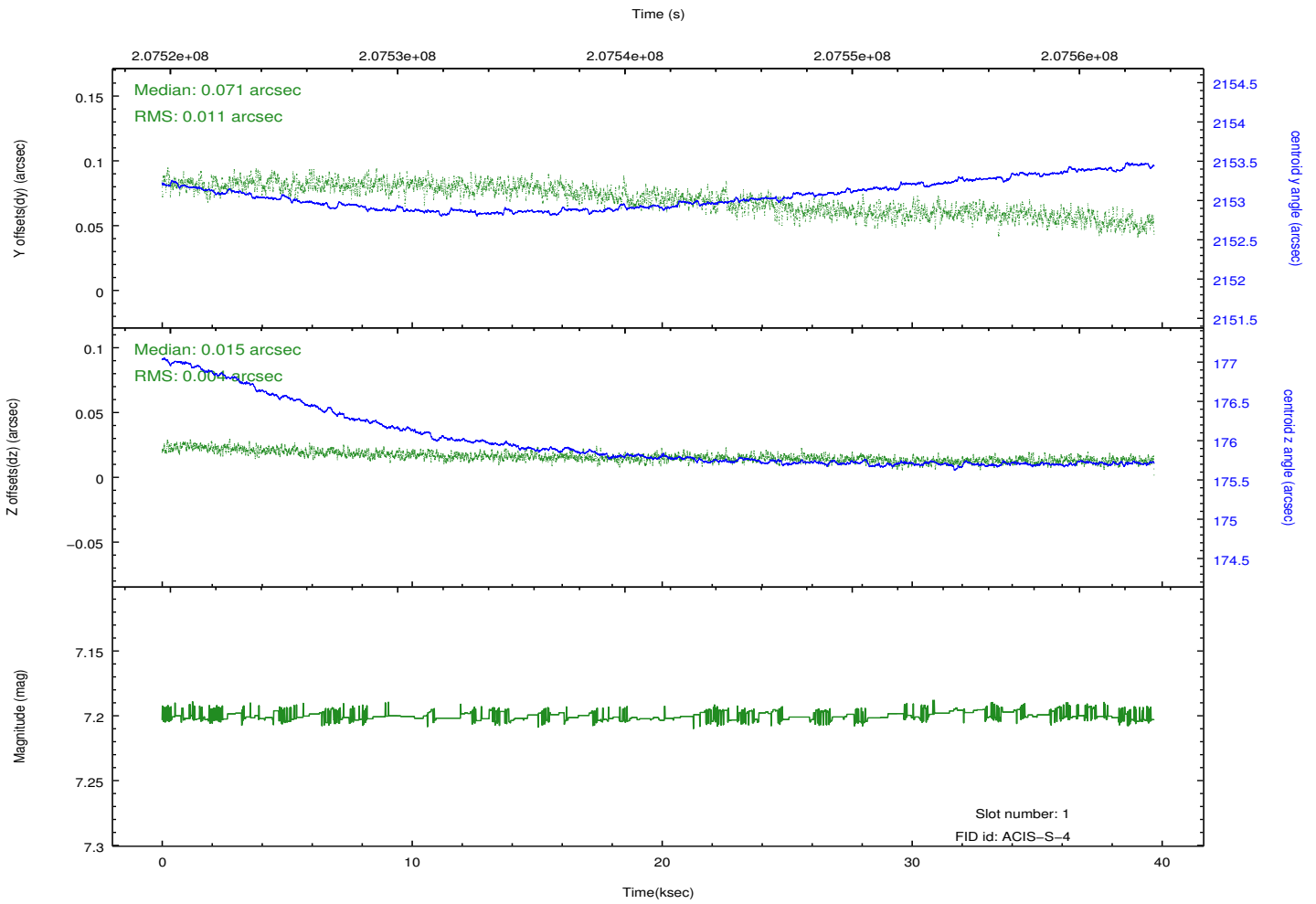
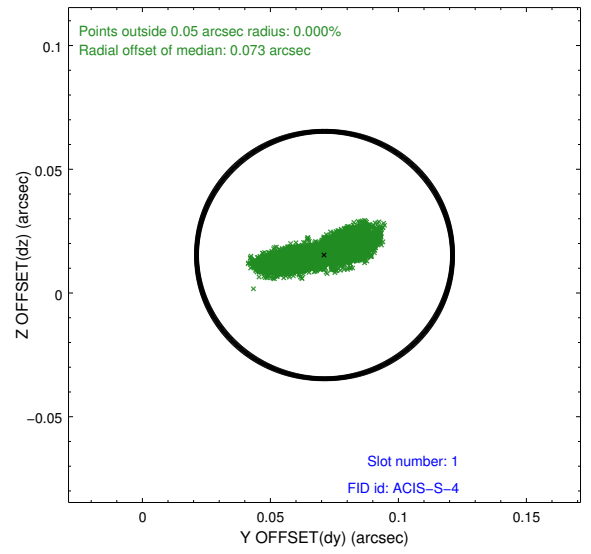
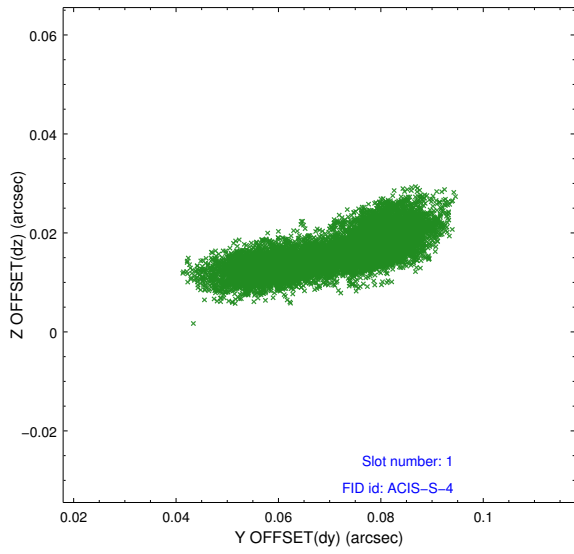


2.5 FID Slots

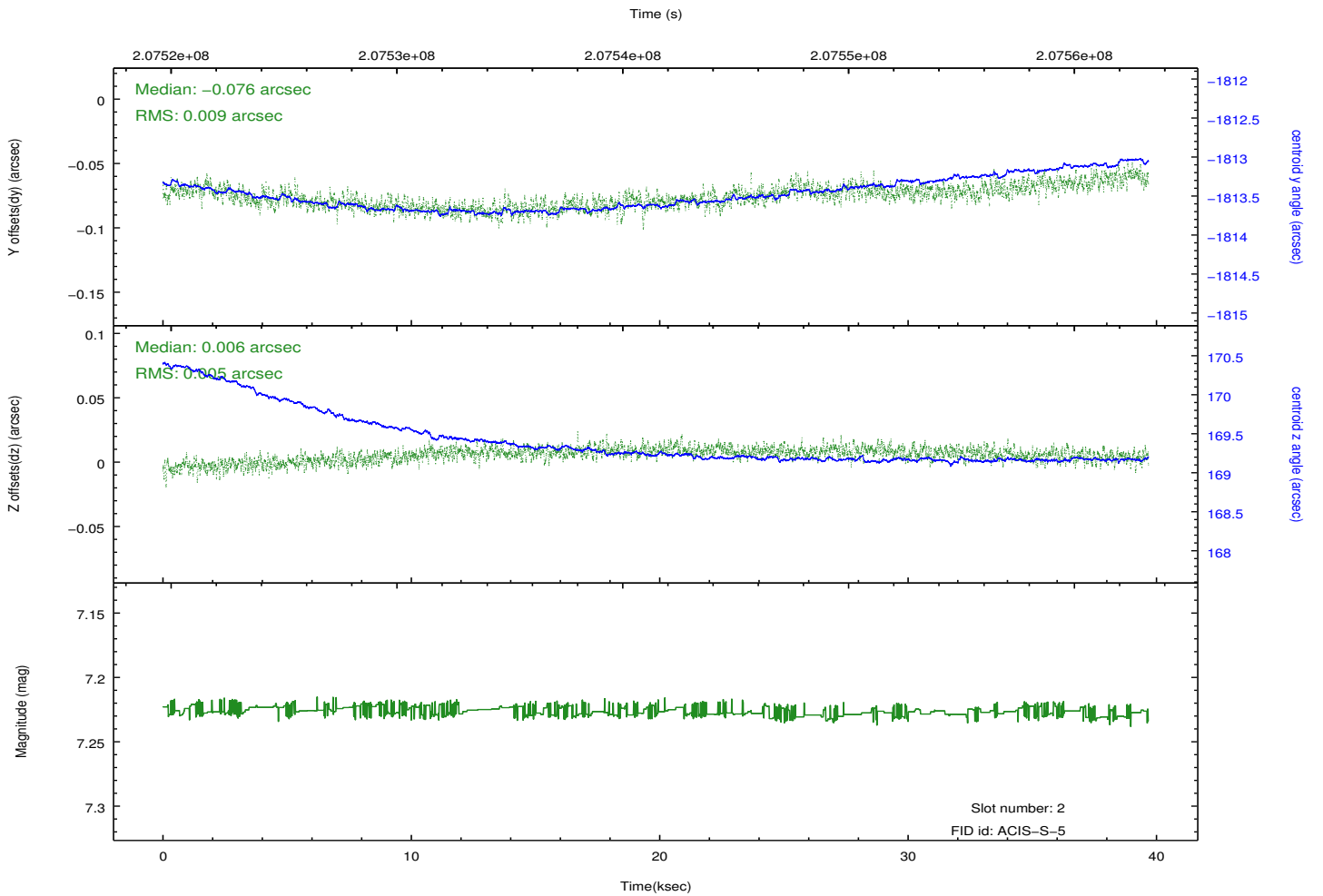
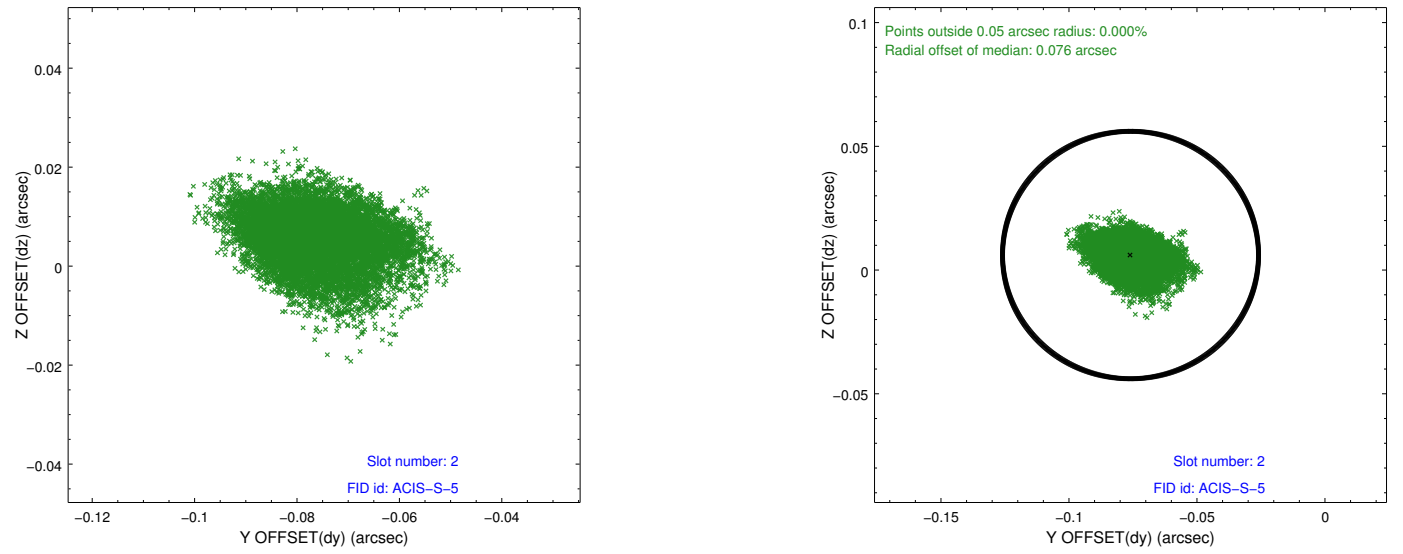
2.5.1 Slot 0



2.5.2 Slot 1



2.5.3 Slot 2



A Summary

A.1 Status

V&V Scientist	Jen Lauer
V&V Date (YYYY-MM-DD)	2012.12.21
V&V Edition	1
V&V Disposition and Status	OK
V&V Charge Time	38.959

A.2 Comments