

V&V Reference Report

L2 ASCDS Version : 8.4.5

Observation 4915 - L2 Version 3
Chandra X-Ray Center

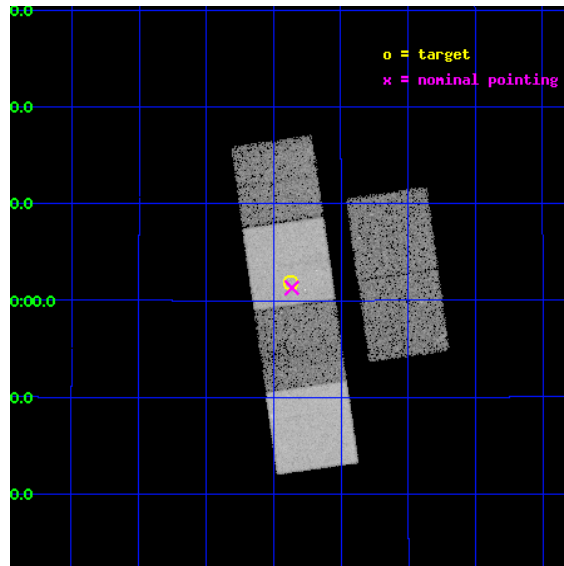
L2 Processing Date : Nov 30 2012

Contents

1	Front	2
2	OBI	3
2.1	OBI	3
2.1.1	Images	3
2.1.2	Bias	3
2.1.3	Parameters	4
2.1.4	Events	4
2.2	Compared Parameters	5
2.3	Aspect	6
2.4	Star Slots	9
2.4.1	Slot 3	9
2.4.2	Slot 4	10
2.4.3	Slot 5	11
2.4.4	Slot 6	12
2.4.5	Slot 7	13
2.5	FID Slots	14
2.5.1	Slot 0	14
2.5.2	Slot 1	15
2.5.3	Slot 2	16
A	Summary	17
A.1	Status	17
A.2	Comments	17

1 Front

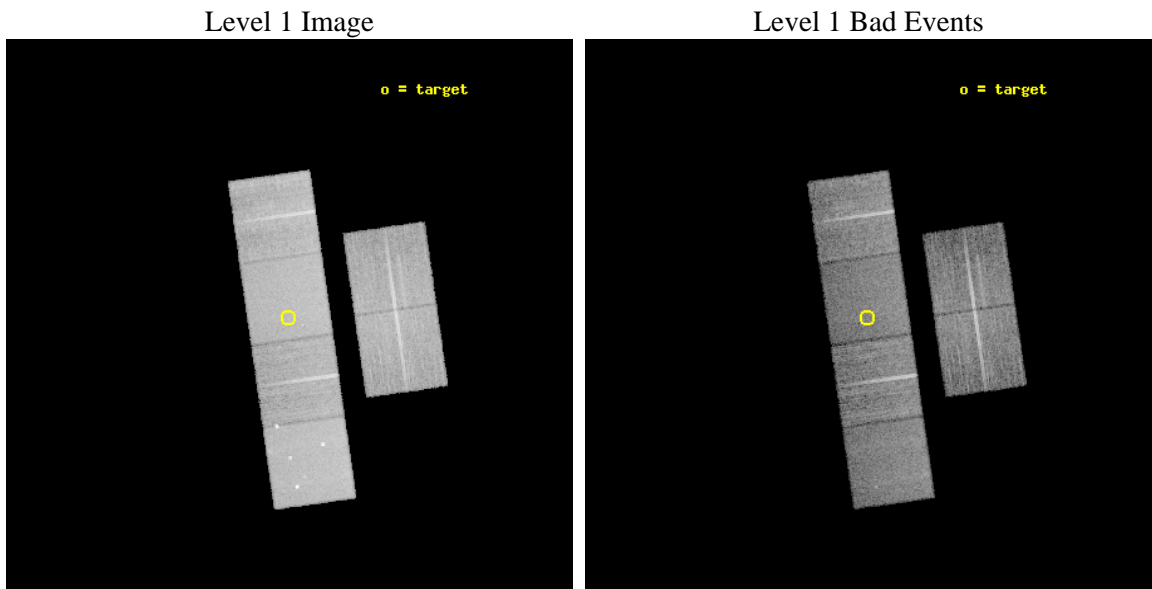
seq_num	700996	Sequence number
obs_id	4915	Observation id
title	Characterization of quiescent X-ray emission from peculiar X-ray flash sources	Proposal title
observer	Prof Mariano Mendez	Principal investigator
object	LEDA 1613994	Source name
dtycycle	0	
cycle	P	events from which exps? Prim/Second/Both
ra_targ	107.844167	Observer's specified target RA [deg]
dec_targ	20.031139	Observer's specified target Dec [deg]
ra_nom	107.84093017354	Nominal RA [deg]
dec_nom	20.021920754427	Nominal Dec [deg]
roll_nom	261.83860380975	Nominal Roll [deg]
revision	3	Processing version of data
ontime	15196.578132957	Sum of GTIs [s]
livetime	15004.149910357	Livetime [s]
ontime2	15196.619172961	Sum of GTIs [s]
ontime3	15196.455012947	Sum of GTIs [s]
ontime5	15196.537092954	Sum of GTIs [s]
ontime6	15196.496052951	Sum of GTIs [s]
ontime7	15196.578132957	Sum of GTIs [s]
ontime8	15196.413972974	Sum of GTIs [s]
l2events	172752	Number of level 2 events



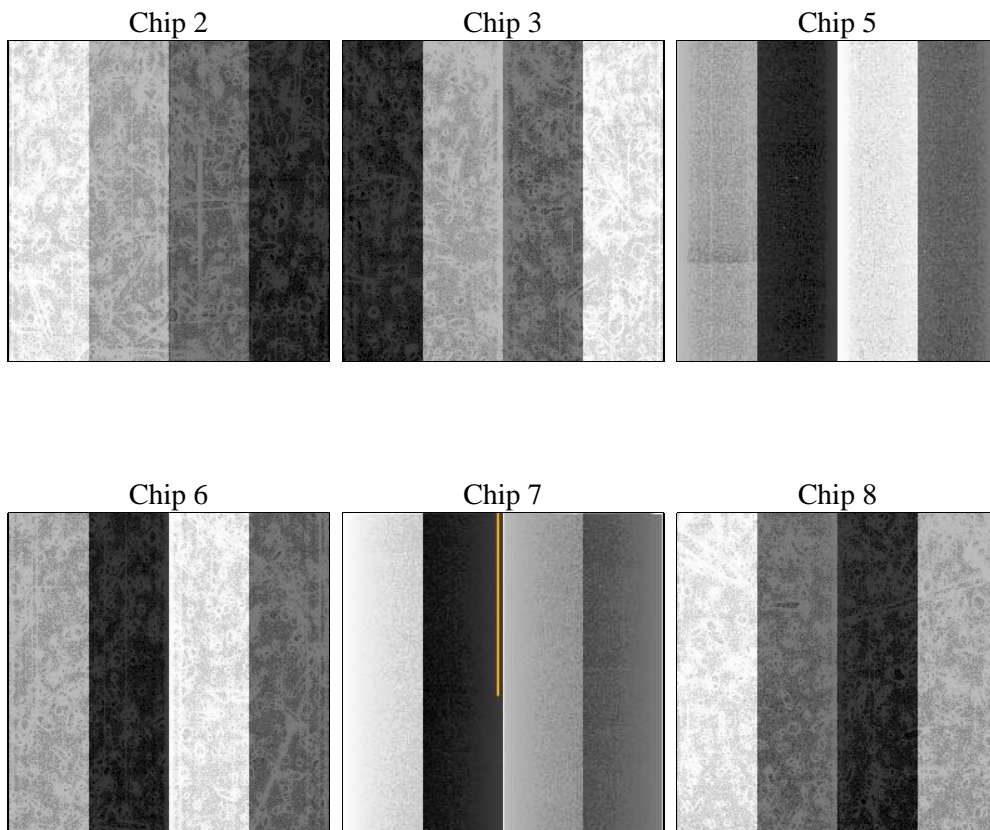
2 OBI

2.1 OBI

2.1.1 Images



2.1.2 Bias



2.1.3 Parameters

obi_num	0	Obi number	sched_exp_time	15500.000000	[s] Scheduled observation exposure time
ascdsver	8.4.5	Processing system revision	ontime	15196.578132957	Sum of GTIs [s]
caldsver	4.5.2	 	ontime2	15196.619172961	Sum of GTIs [s]
date	2012-12-01T00:36:14	Date and time of file creation	ontime3	15196.455012947	Sum of GTIs [s]
revision	3	Processing version of data	ontime5	15196.537092954	Sum of GTIs [s]
			ontime6	15196.496052951	Sum of GTIs [s]
			ontime7	15196.578132957	Sum of GTIs [s]
			ontime8	15196.413972974	Sum of GTIs [s]
			l1events	772780	Number of level 1 events

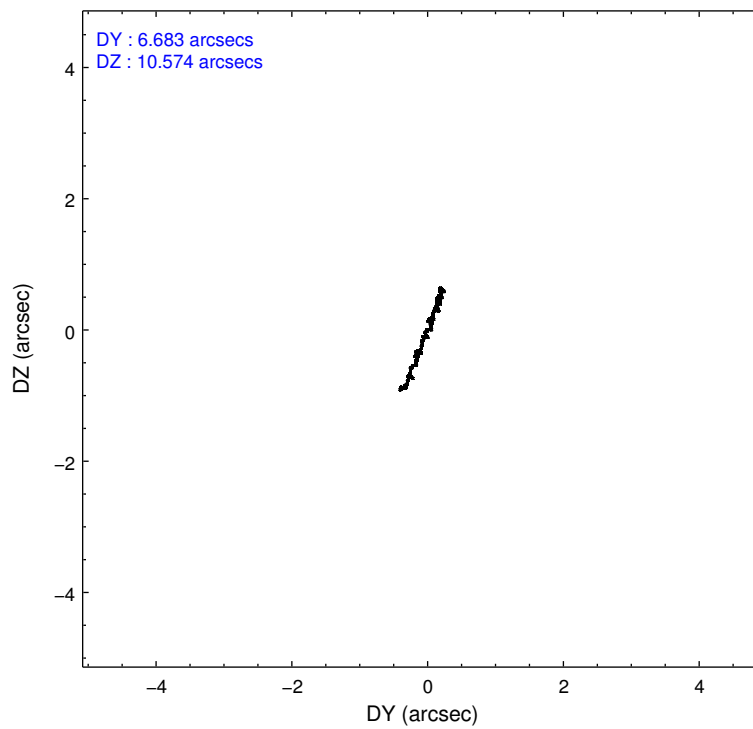
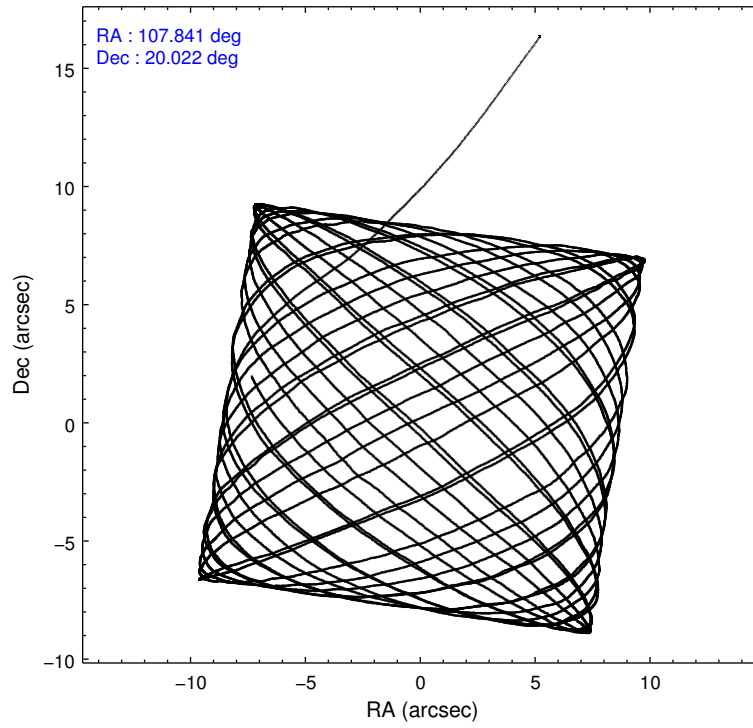
2.1.4 Events

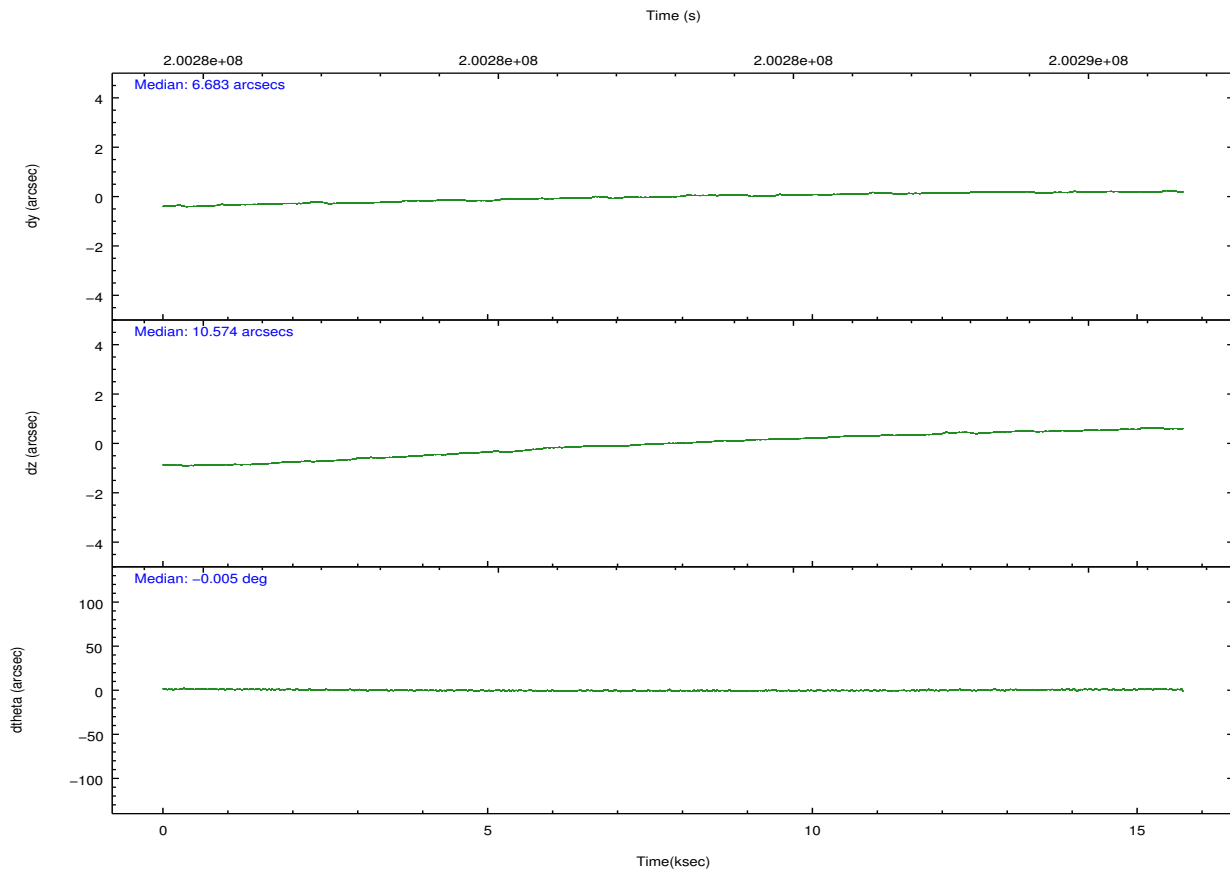
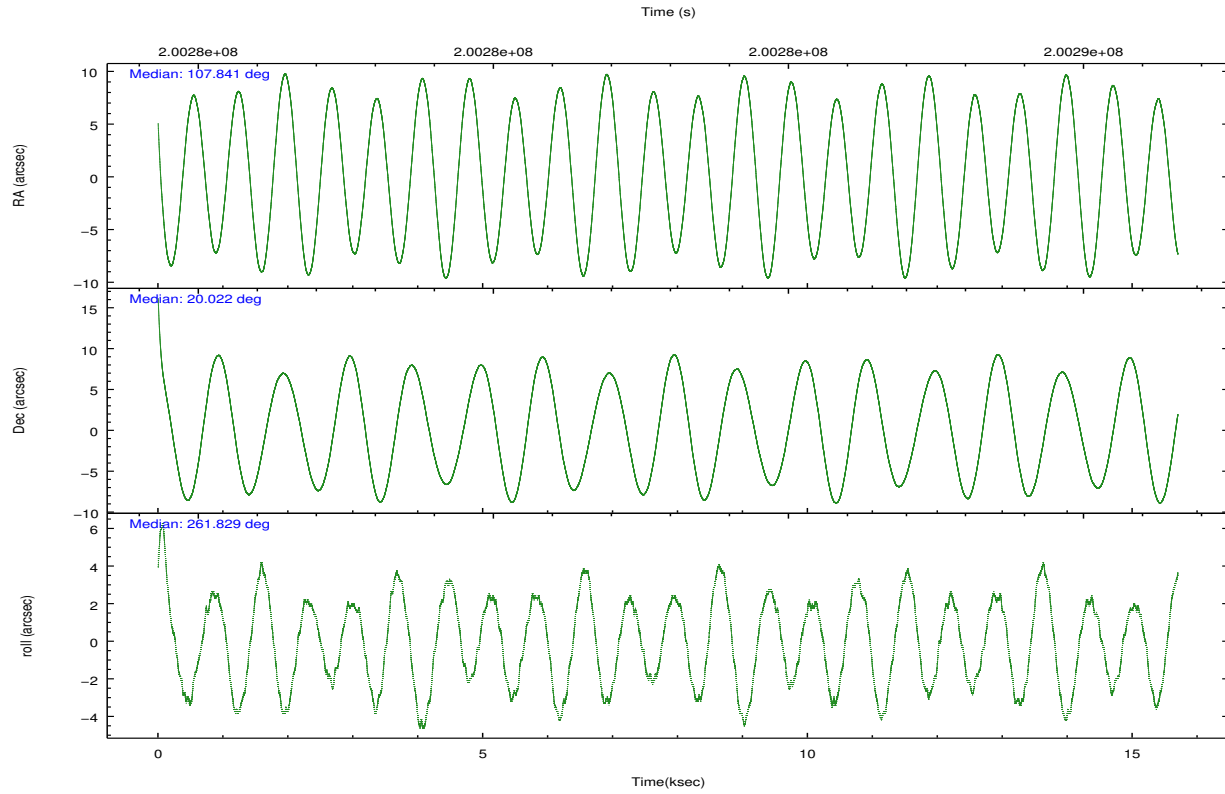
	ccd 2	ccd 3	ccd 5	ccd 6	ccd 7	ccd 8		ccd 2	ccd 3	ccd 5	ccd 6	ccd 7	ccd 8
level 1 events	112027	102916	162841	111349	145787	137860	grade 0 events	5692	5270	9617	5025	5301	9141
rejected events	99209	90793	87478	98637	85947	108672		5%	5%	5%	4%	3%	6%
rejected %	88%	88%	53%	88%	58%	78%	grade 1 events	81	59	333	54	138	99
								0%	0%	0%	0%	0%	0%
							grade 2 events	2678	2324	21476	2651	11923	6298
								2%	2%	13%	2%	8%	4%
							grade 3 events	1234	1207	2948	1243	5318	3135
								1%	1%	1%	1%	3%	2%
							grade 4 events	1133	1213	2842	1288	5402	3121
								1%	1%	1%	1%	3%	2%
							grade 5 events	4360	4808	11819	5087	14116	6527
								3%	4%	7%	4%	9%	4%
							grade 6 events	2084	2112	38492	2509	31909	7516
								1%	2%	23%	2%	21%	5%
							grade 7 events	94765	85923	75314	93492	71680	102023
								84%	83%	46%	83%	49%	74%

2.2 Compared Parameters

Parameter	Planned	Actual	Parameter	Planned	Actual
Instrument	ACIS	ACIS	Obspar format version number	7	7
Detector	ACIS-235678	ACIS-235678	Obspar file type	PREDICTED	ACTUAL
Grating	NONE	NONE	Obspar update status	NONE	UPDATED
Data mode	FAINT	FAINT	Number of optional ACIS chips dropped	0	0
Observation mode	POINTING	POINTING	On-chip summing requested	N	N
[deg] Pointing RA	107.829794	107.8409301735365	Subarray requested	NONE	NONE
[deg] Pointing Dec	20.047086	20.02192075442749	Alternating exposures requested	N	N
[deg] Pointing Roll	261.685791	261.8386038097452	[s] Primary exposure time	0.000000	3.2
[mm] SIM focus pos	-0.684267	-0.6828225247311905			
[mm] SIM defocus	0	0.001444936568705701			
[mm] SIM translation stage pos	-190.132523	-190.1400660498719			
[mm] SIM translation stage offset	0	0.00754346686406393			
[s] Observation start time (MET)	200275310.184000	200274330.20382			
Observation start date	2004-05-07T00:00:46	2004-05-06T23:45:30			
[s] Observation end time (MET)	200290810.184000	200292038.6171			
Observation end date	2004-05-07T04:19:06	2004-05-07T04:40:38			
Read mode	TIMED	TIMED			

2.3 Aspect





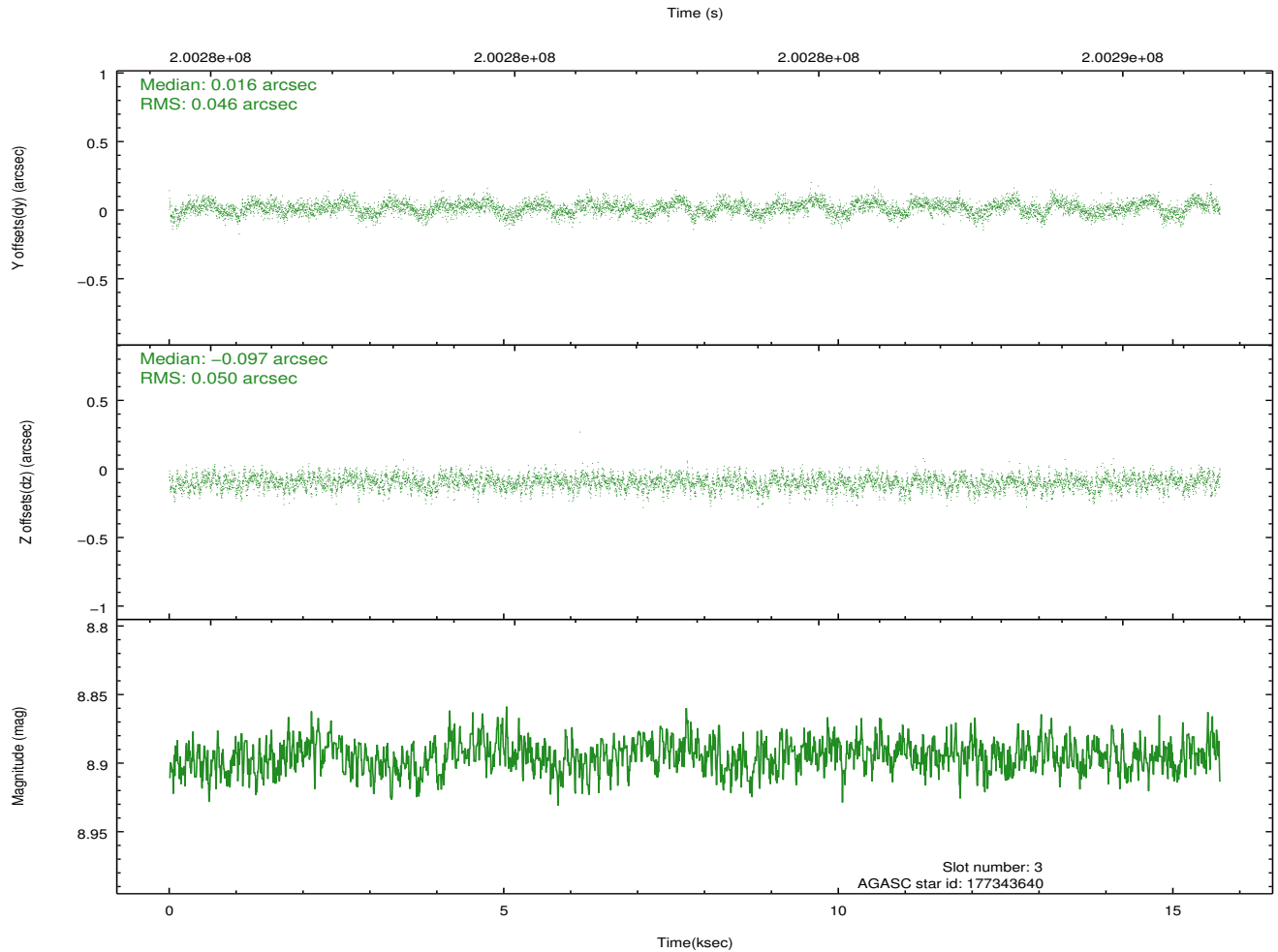
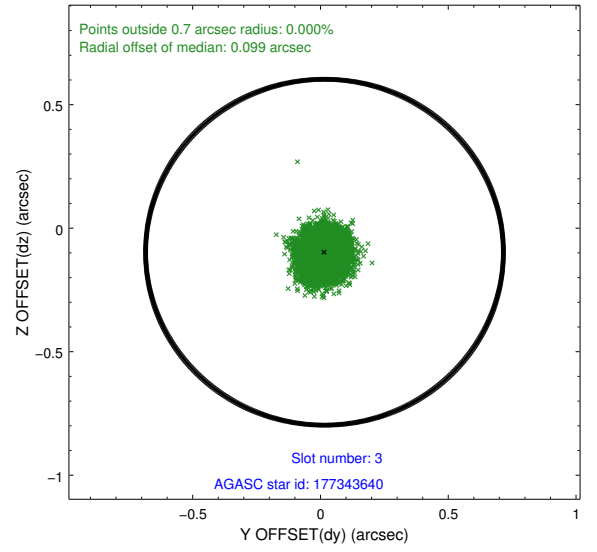
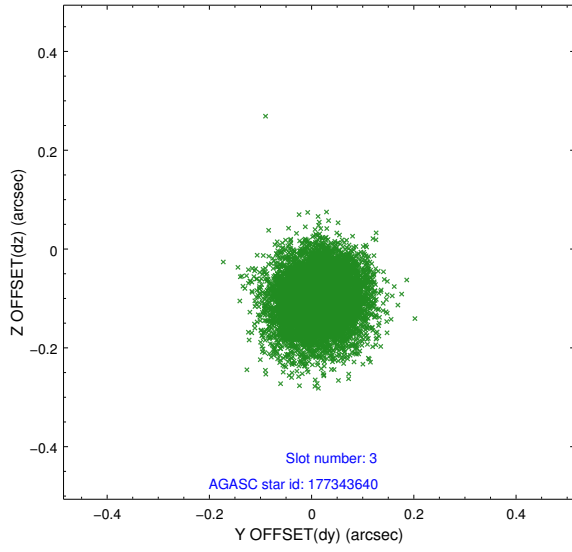
Slot Statistics

slot	status	id	mag	n_pts	med_dy	med_dz	dr1	dr2	ra	dec	mean_y	mean_z
0	FID	ACIS-S-2	7.10	3830	-0.060	-0.023	0.010	0.027	0.000000	0.000000	-759.42	-1731.80
1	FID	ACIS-S-4	7.20	3827	0.084	0.035	0.010	0.040	0.000000	0.000000	2153.83	176.50
2	FID	ACIS-S-5	7.23	3830	-0.055	-0.004	0.009	0.019	0.000000	0.000000	-1811.93	170.38
3	GUIDE	177343640	8.90	7660	0.016	-0.097	0.073	0.117	107.248573	20.055975	249.87	-1949.70
4	GUIDE	177351056	8.62	7661	0.111	0.011	0.071	0.118	107.580697	19.999825	290.16	-809.13
5	GUIDE	177352208	7.97	7660	0.120	0.044	0.048	0.077	107.641174	19.803037	961.96	-504.74
6	GUIDE	177473832	8.28	7660	-0.168	0.095	0.060	0.099	108.284806	20.563918	-2064.78	1248.24
7	GUIDE	177343336	8.78	7660	-0.078	-0.050	0.070	0.113	107.095912	20.018287	456.54	-2441.50

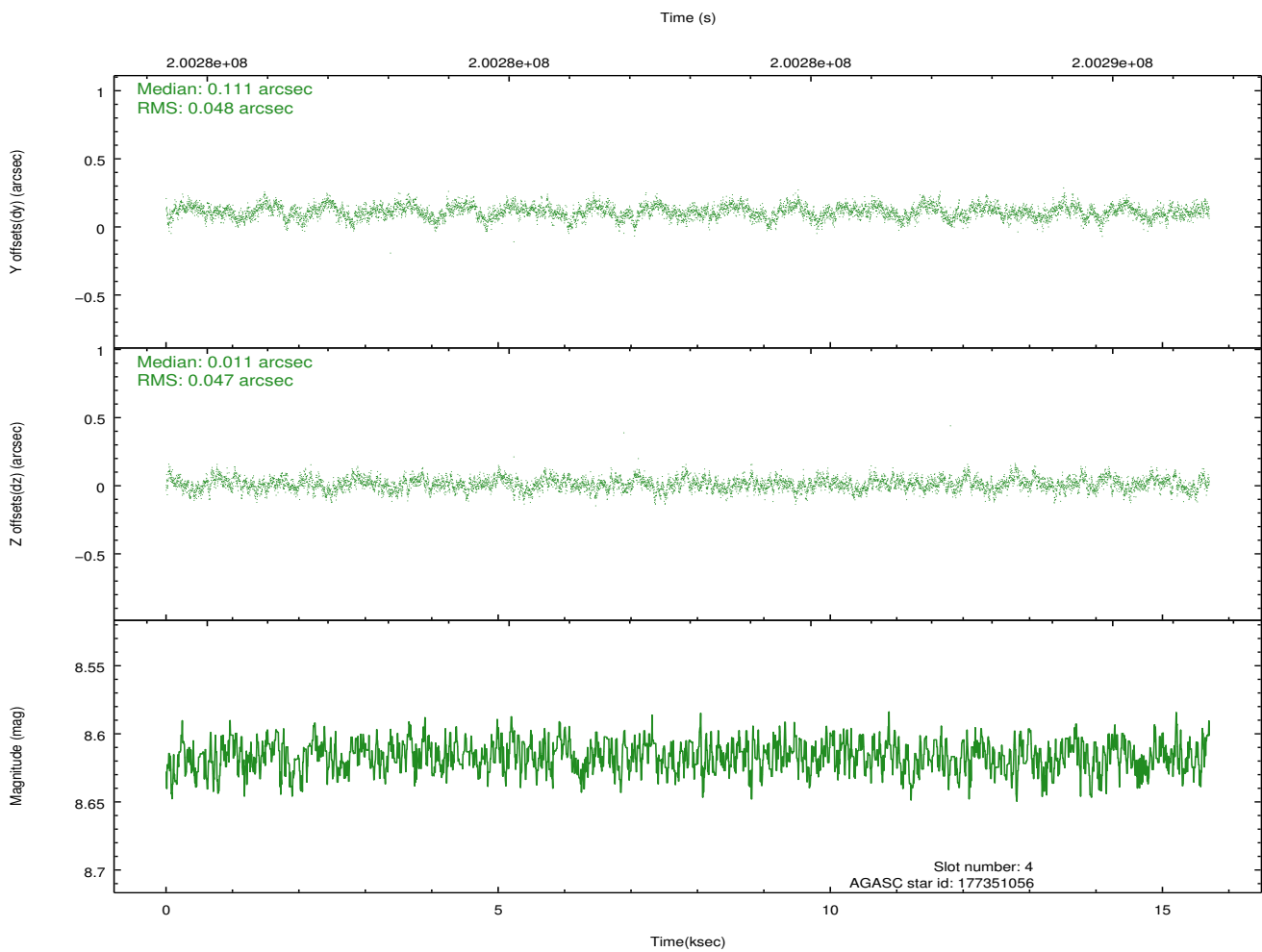
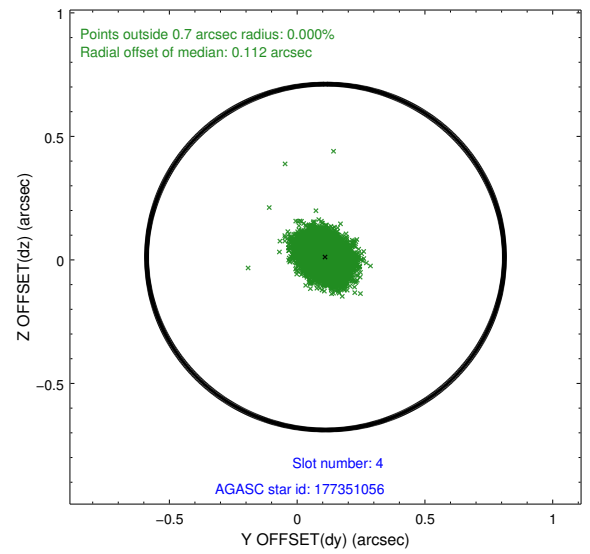
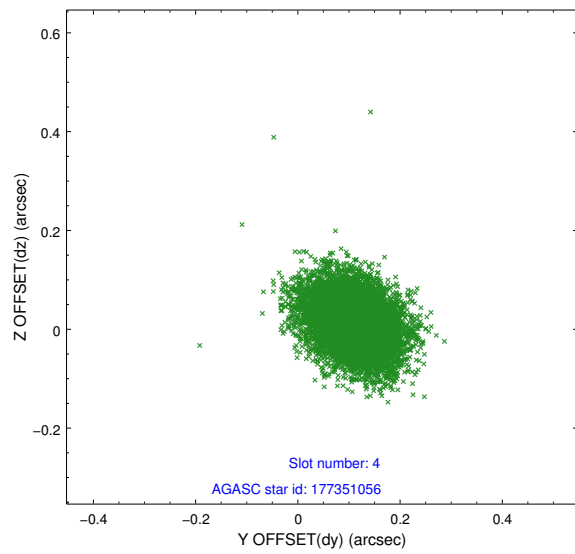
∞

2.4 Star Slots

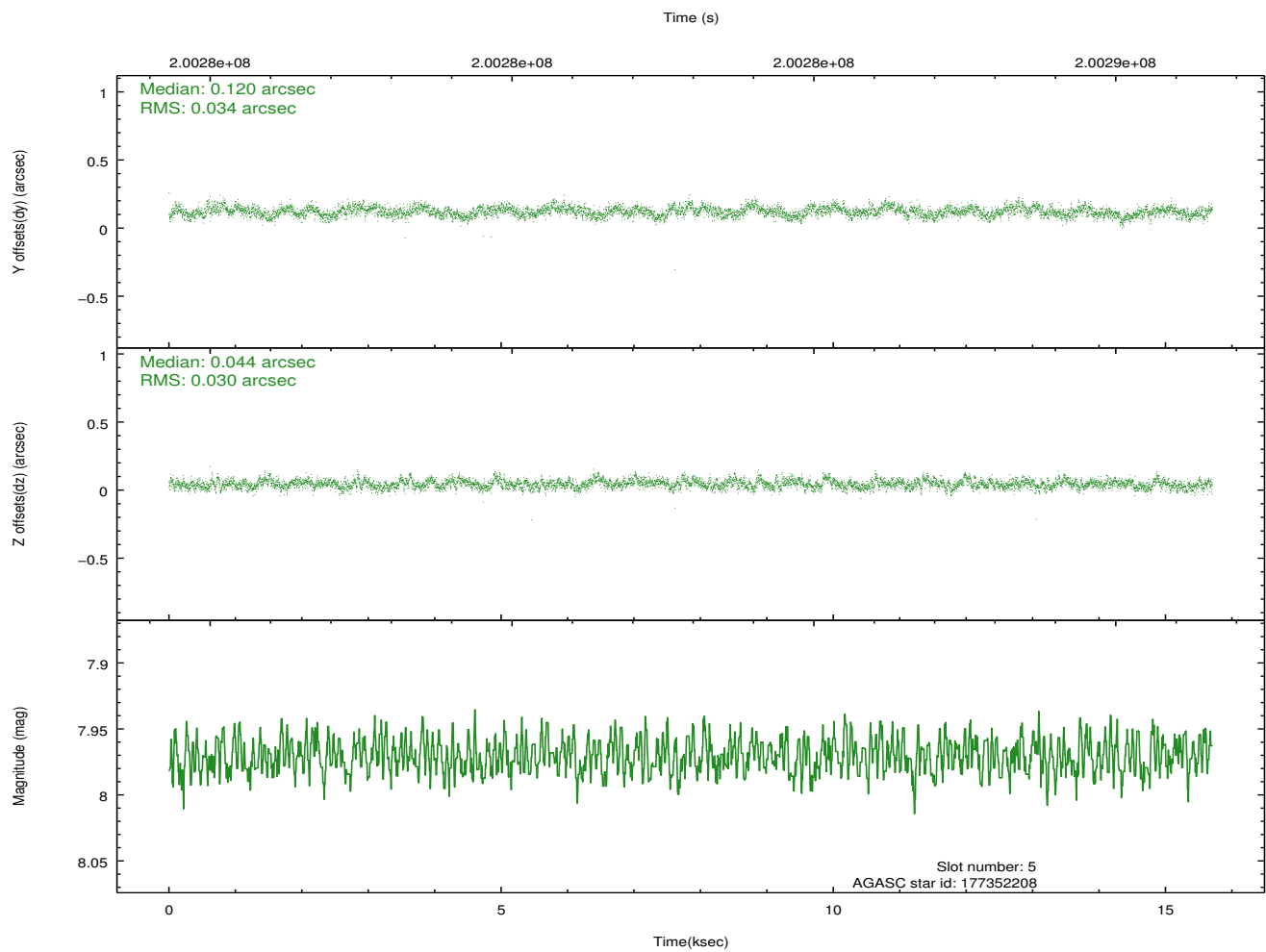
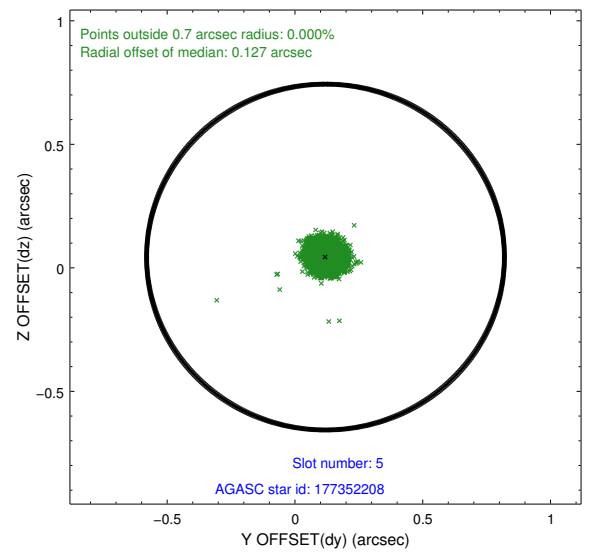
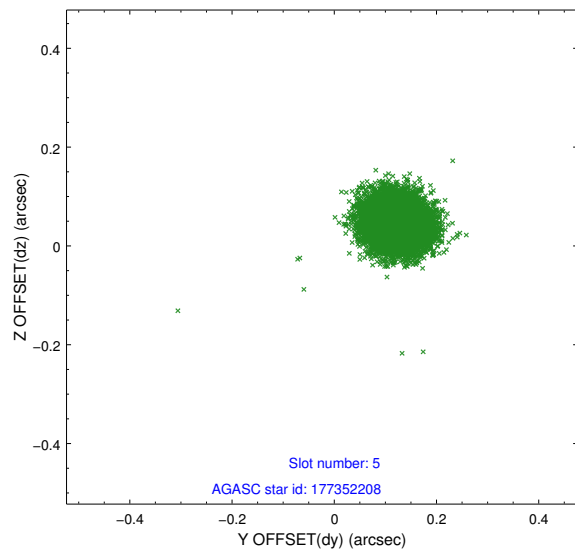
2.4.1 Slot 3



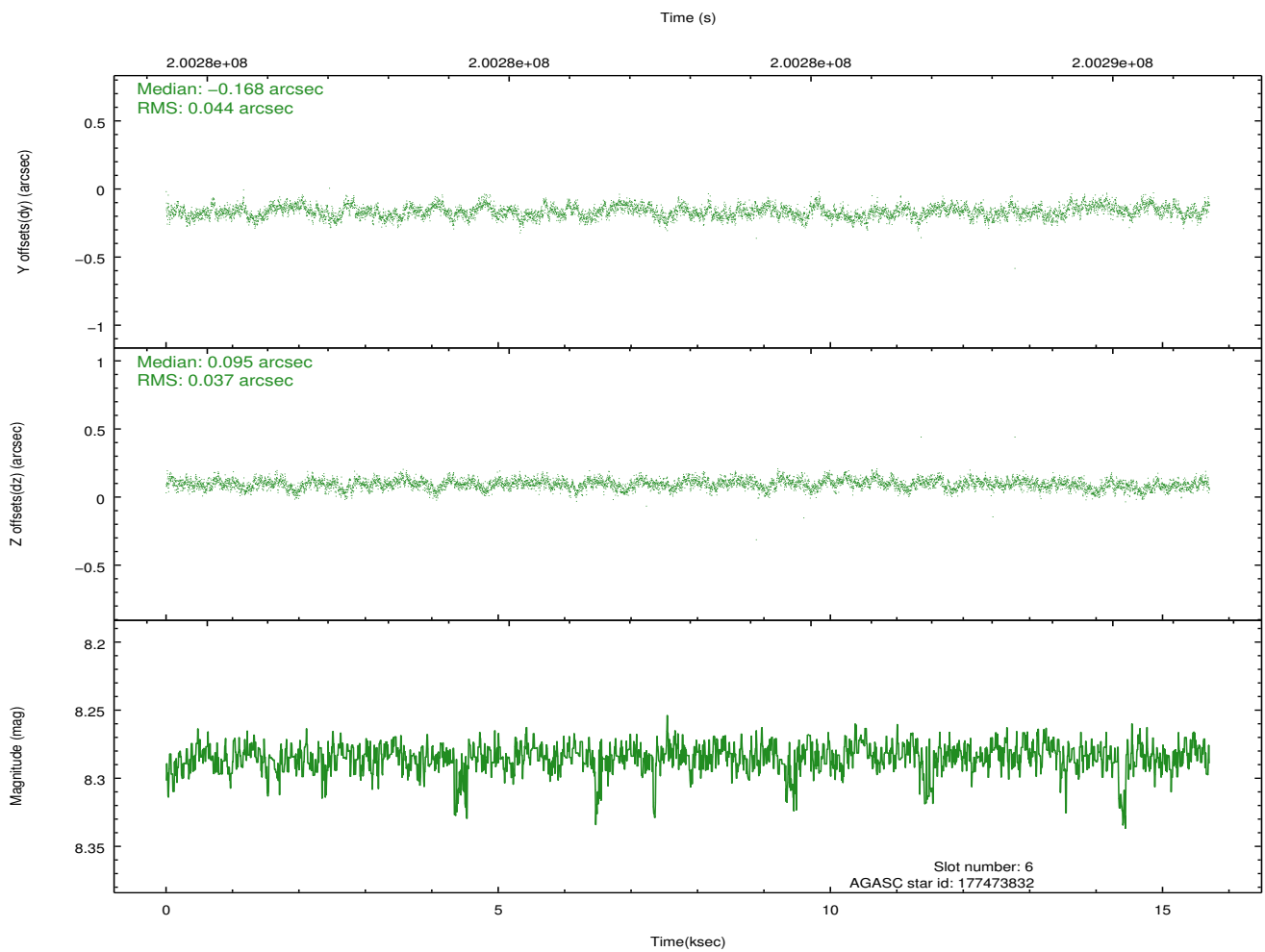
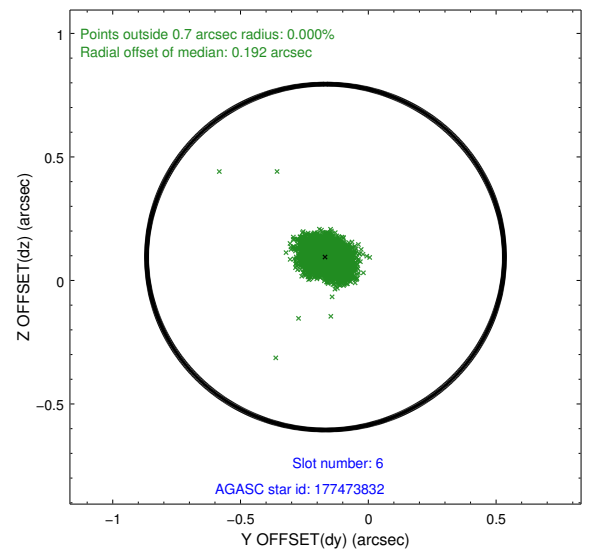
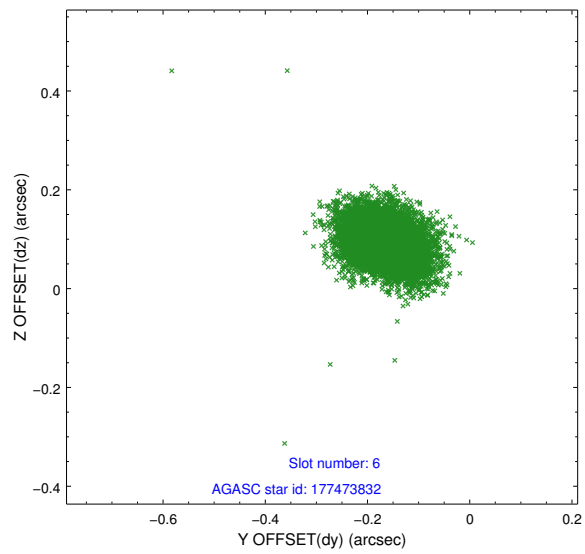
2.4.2 Slot 4



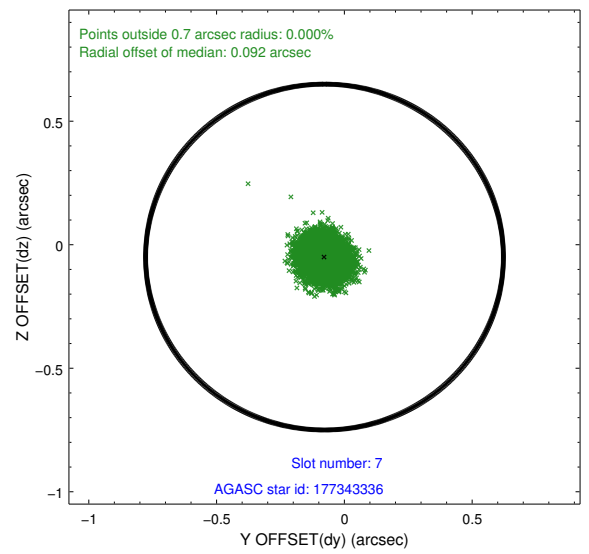
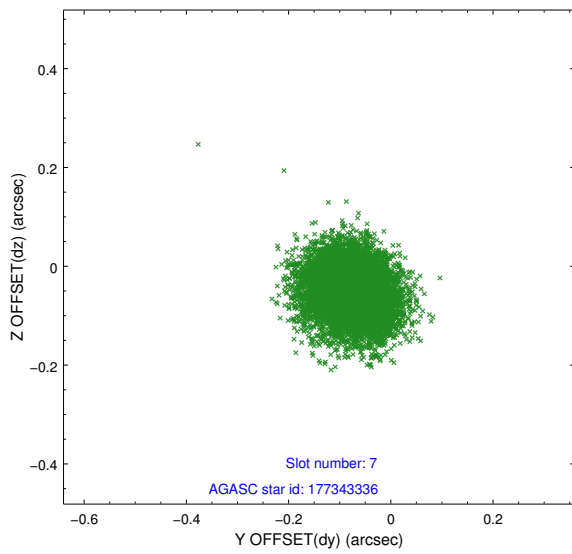
2.4.3 Slot 5



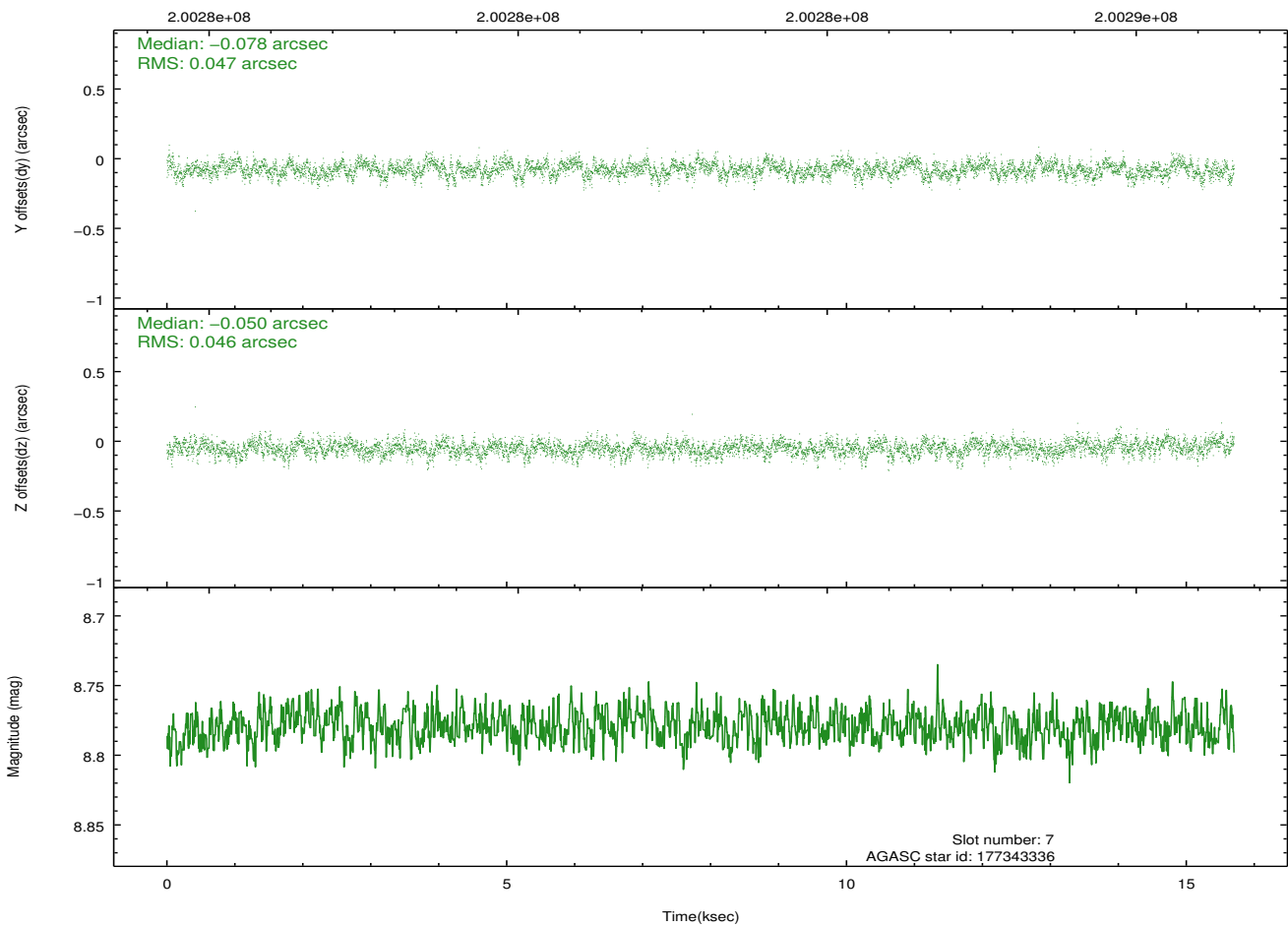
2.4.4 Slot 6



2.4.5 Slot 7

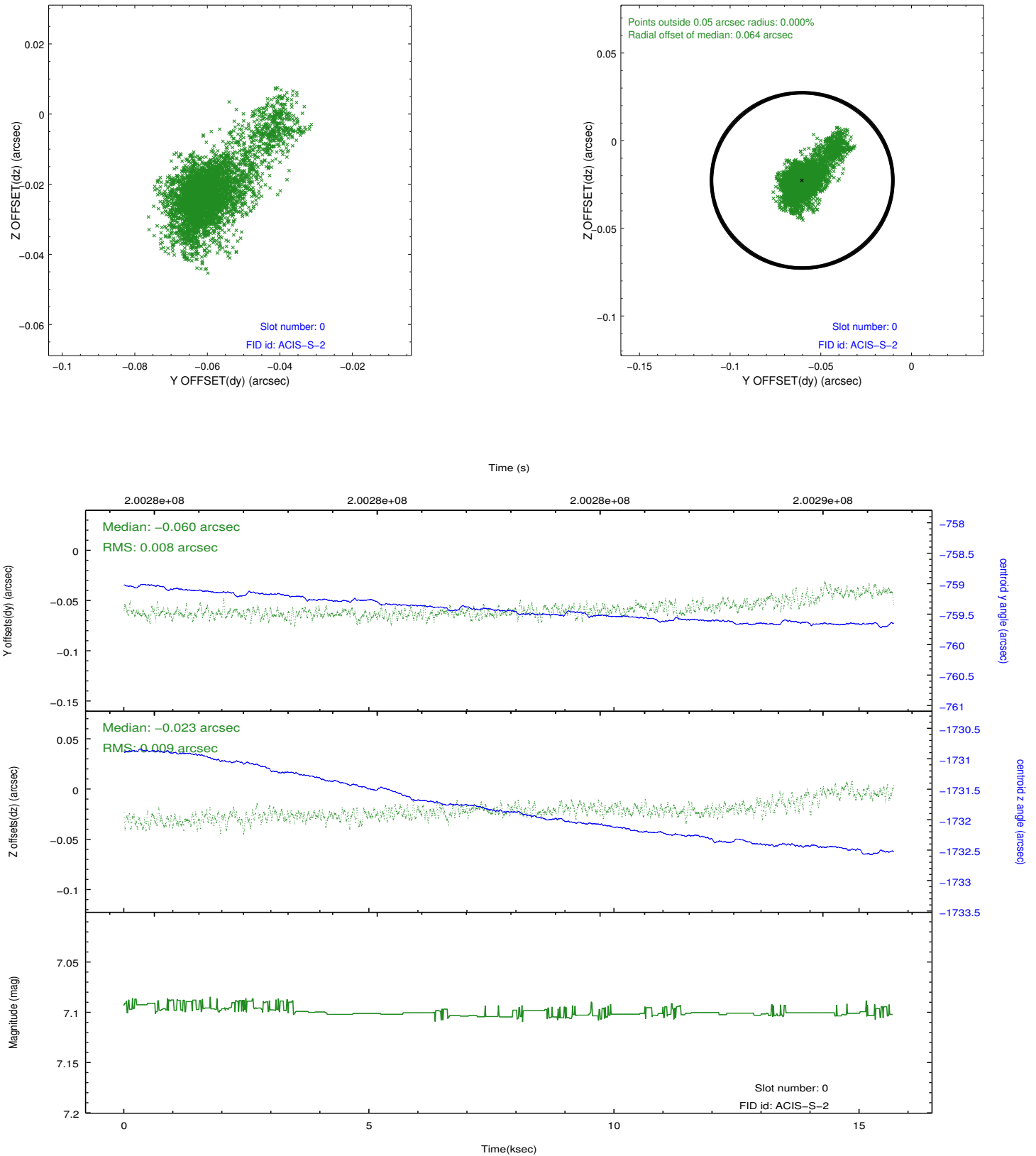


Time (s)

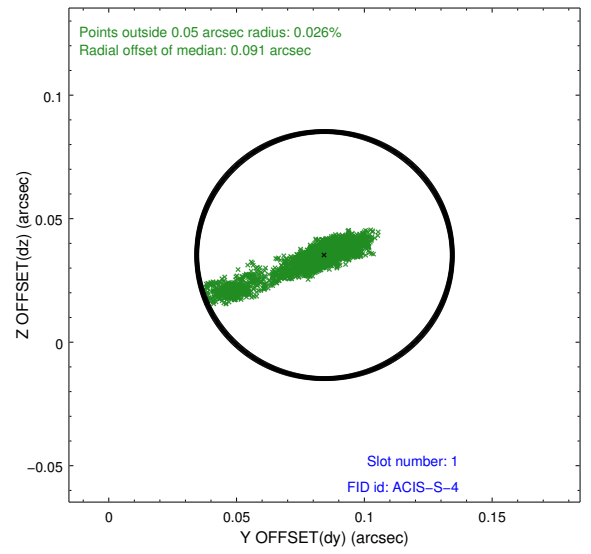
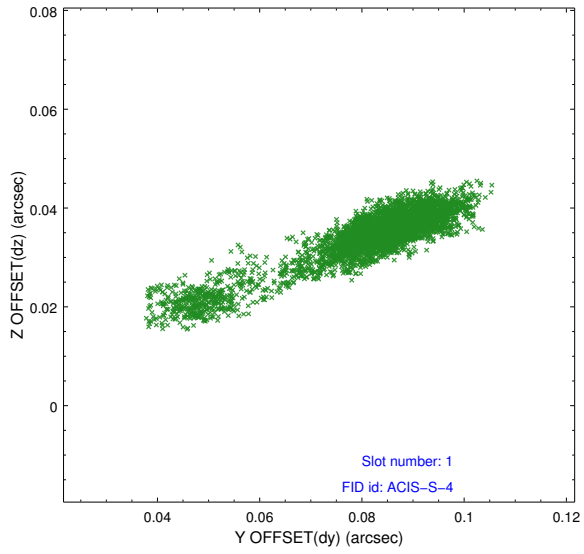


2.5 FID Slots

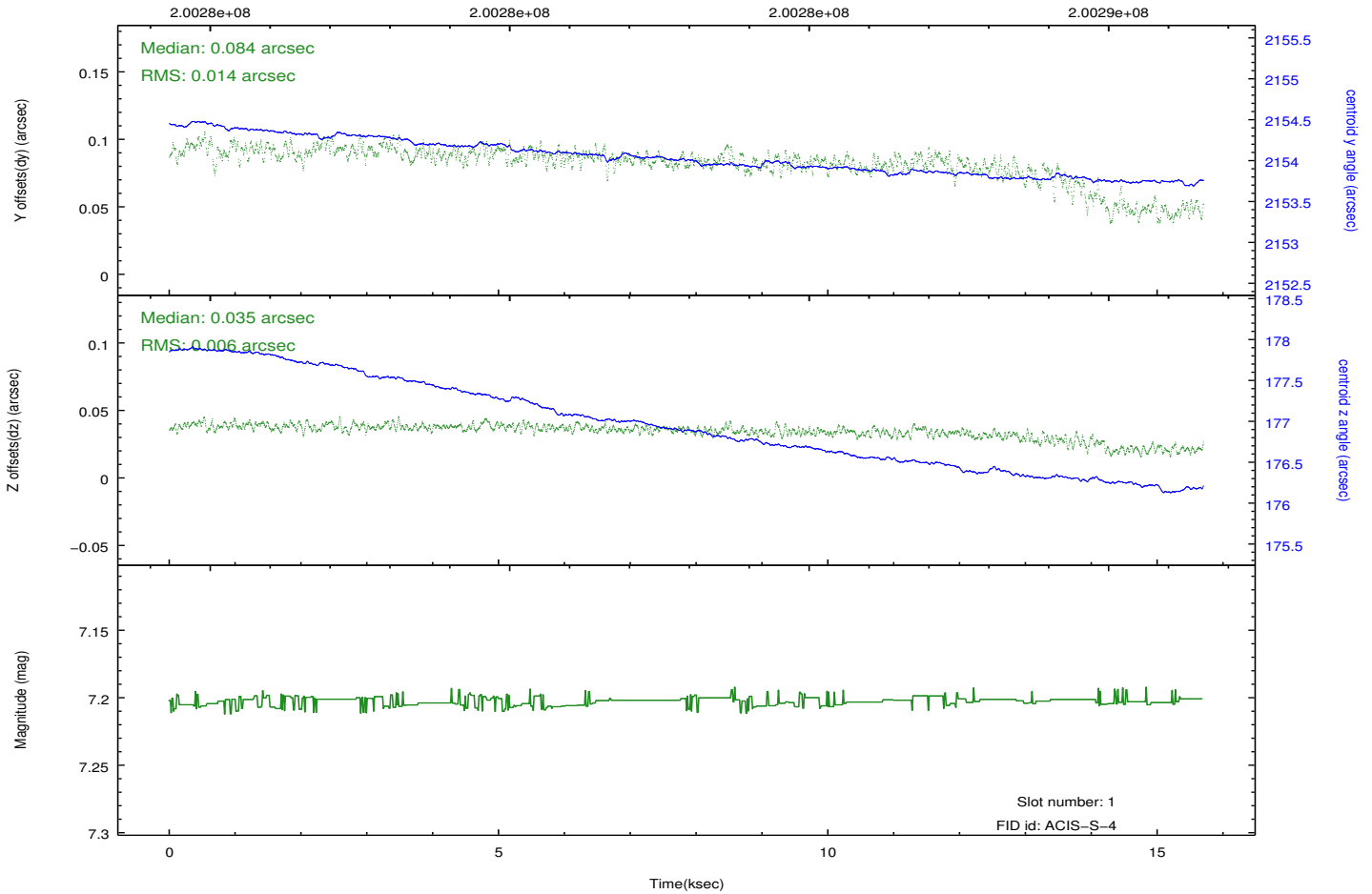
2.5.1 Slot 0



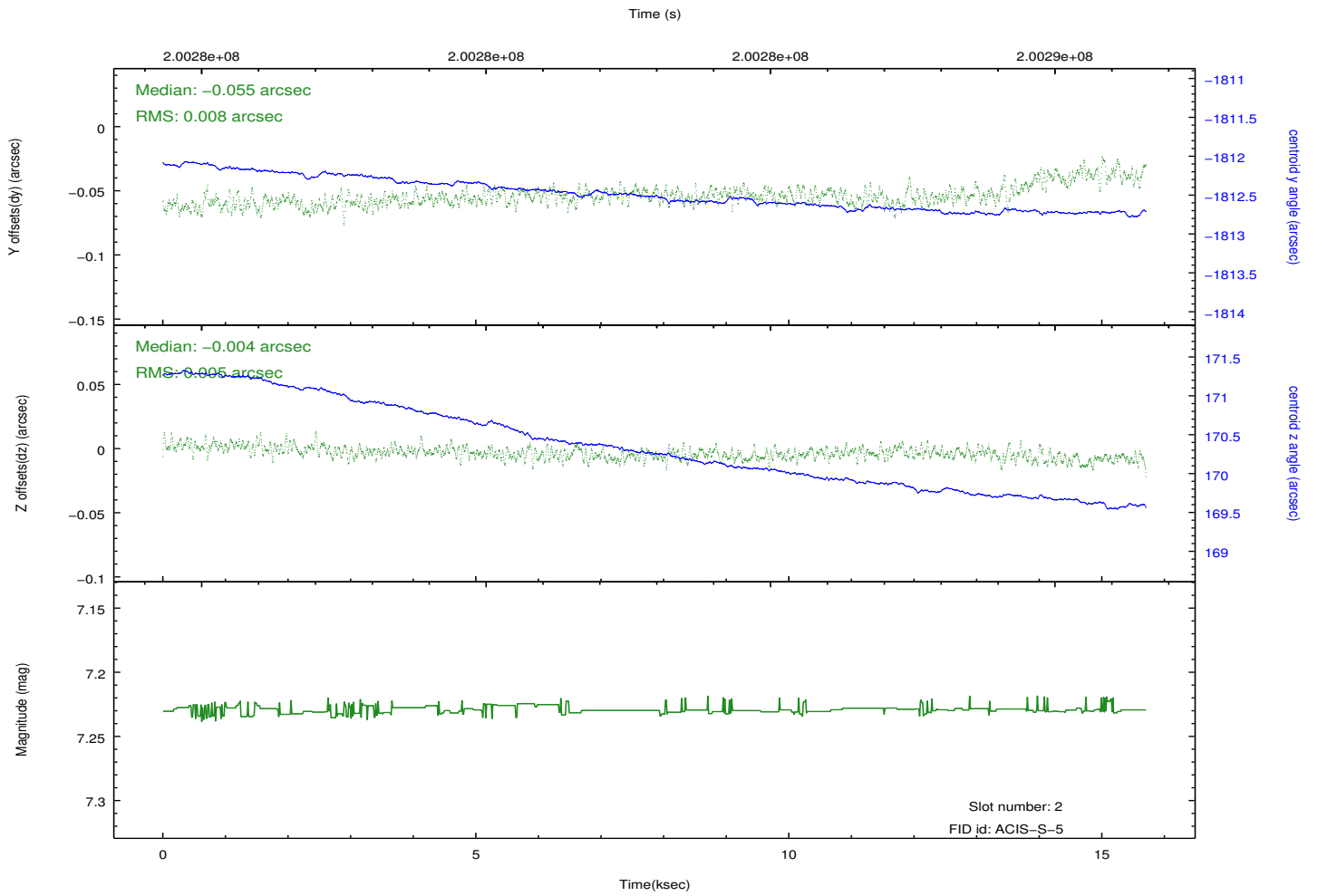
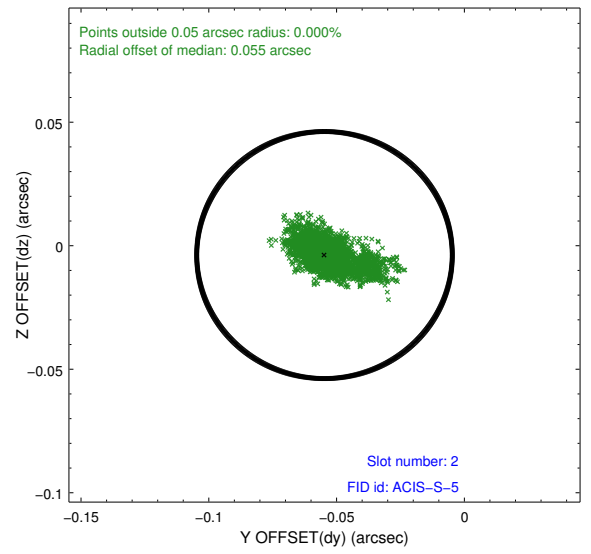
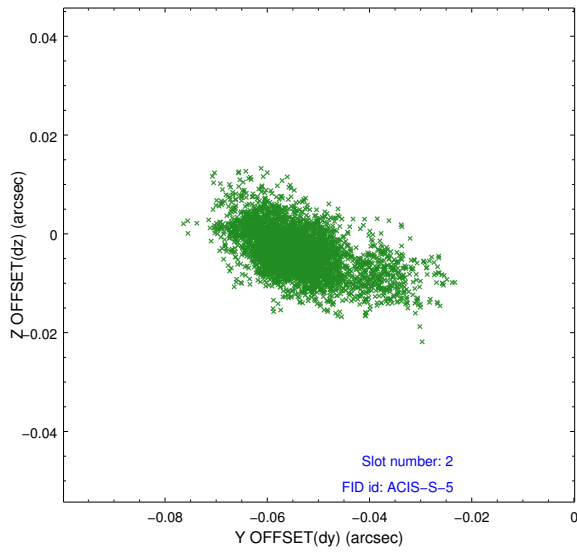
2.5.2 Slot 1



Time (s)



2.5.3 Slot 2



A Summary

A.1 Status

V&V Scientist	Jen Lauer
V&V Date (YYYY-MM-DD)	2012.12.17
V&V Edition	1
V&V Disposition and Status	OK
V&V Charge Time	15.196

A.2 Comments