

V&V Reference Report

L2 ASCDS Version : 8.5

Observation 4985 - L2 Version 3
Chandra X-Ray Center

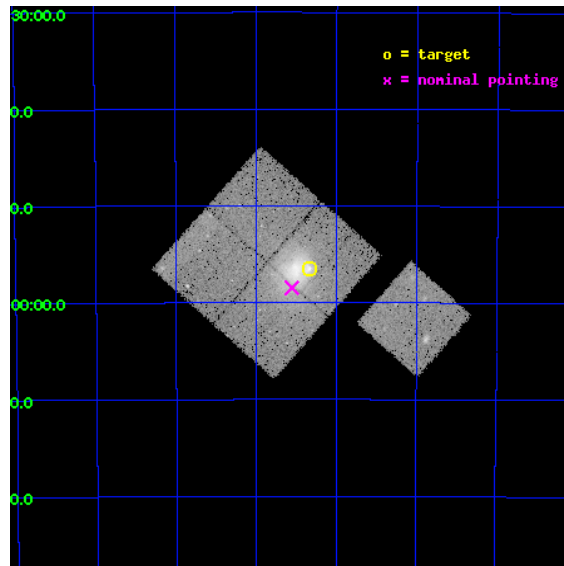
L2 Processing Date : Dec 7 2012

Contents

1	Front	2
2	OBI	3
2.1	OBI	3
2.1.1	Images	3
2.1.2	Bias	3
2.1.3	Parameters	4
2.1.4	Events	4
2.2	Compared Parameters	5
2.3	Aspect	6
2.4	Star Slots	9
2.4.1	Slot 3	9
2.4.2	Slot 4	10
2.4.3	Slot 5	11
2.4.4	Slot 6	12
2.4.5	Slot 7	13
2.5	FID Slots	14
2.5.1	Slot 0	14
2.5.2	Slot 1	15
2.5.3	Slot 2	16
A	Summary	17
A.1	Status	17
A.2	Comments	17

1 Front

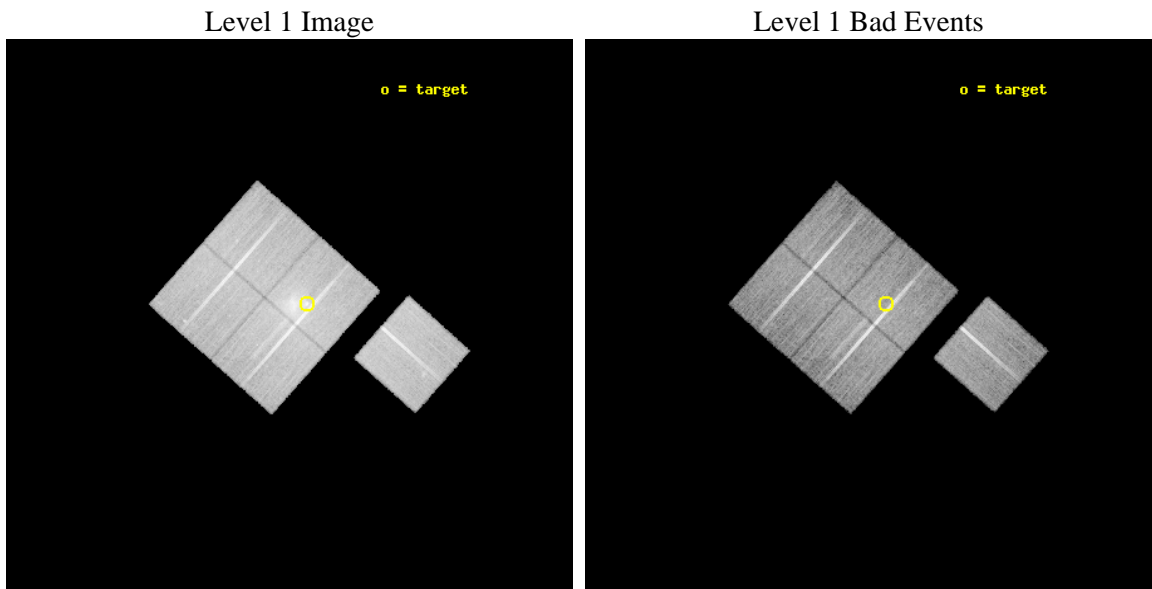
seq_num	800429	Sequence number
obs_id	4985	Observation id
title	THE MOST INTERESTING CLUSTER IN THE UNIVERSE	Proposal title
observer	Dr Maxim Markevitch	Principal investigator
object	1E0657-56	Source name
dtcycle	0	
cycle	P	events from which exps? Prim/Second/Both
ra_targ	104.5827	Observer's specified target RA [deg]
dec_targ	-55.9415	Observer's specified target Dec [deg]
ra_nom	104.6390621975	Nominal RA [deg]
dec_nom	-55.974637692663	Nominal Dec [deg]
roll_nom	131.57978256516	Nominal Roll [deg]
revision	3	Processing version of data
ontime	27850.277025789	Sum of GTIs [s]
liveltime	27486.392653371	Livetime [s]
ontime0	27856.558976173	Sum of GTIs [s]
ontime1	27853.418015927	Sum of GTIs [s]
ontime2	27850.277025789	Sum of GTIs [s]
ontime3	27853.418015927	Sum of GTIs [s]
ontime6	27853.418005943	Sum of GTIs [s]
l2events	120908	Number of level 2 events



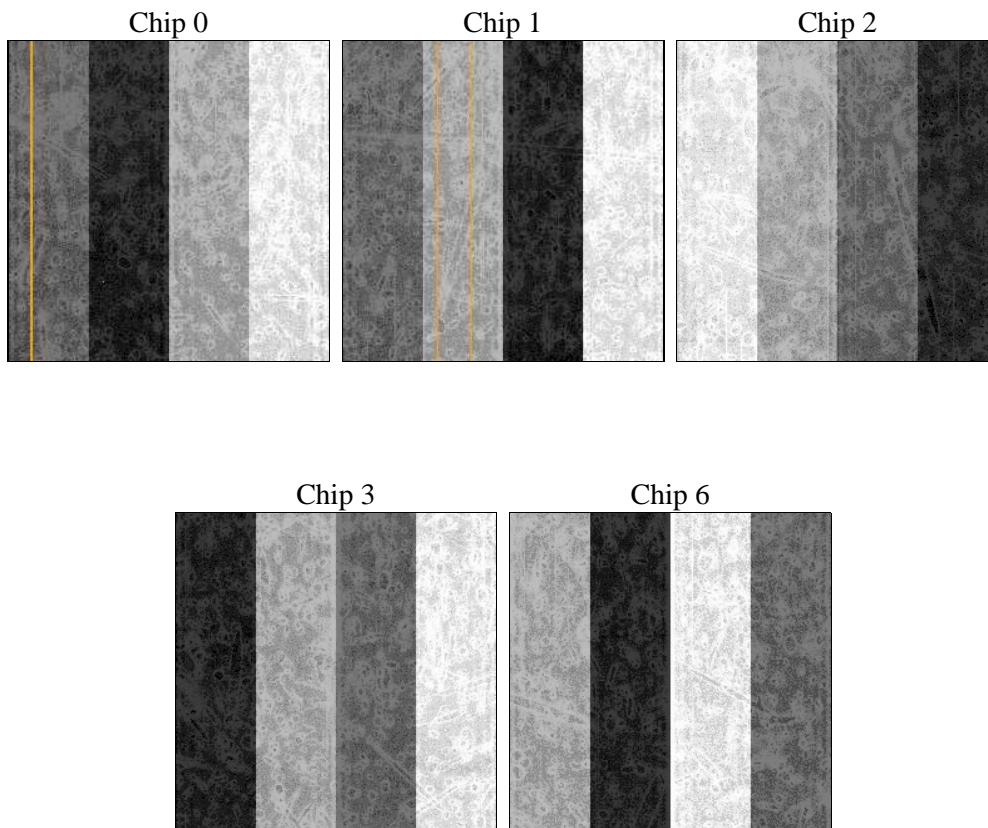
2 OBI

2.1 OBI

2.1.1 Images



2.1.2 Bias



2.1.3 Parameters

obi_num	0	Obi number	sched_exp_time	27742.457000	[s] Scheduled observation exposure time
ascdsver	8.5	Processing system revision	ontime	27850.277025789	Sum of GTIs [s]
caldbver	4.5.4	 	ontime0	27856.558976173	Sum of GTIs [s]
date	2012-12-07T18:49:12	Date and time of file creation	ontime1	27853.418015927	Sum of GTIs [s]
revision	3	Processing version of data	ontime2	27850.277025789	Sum of GTIs [s]
			ontime3	27853.418015927	Sum of GTIs [s]
			ontime6	27853.418005943	Sum of GTIs [s]
			l1events	934430	Number of level 1 events

2.1.4 Events

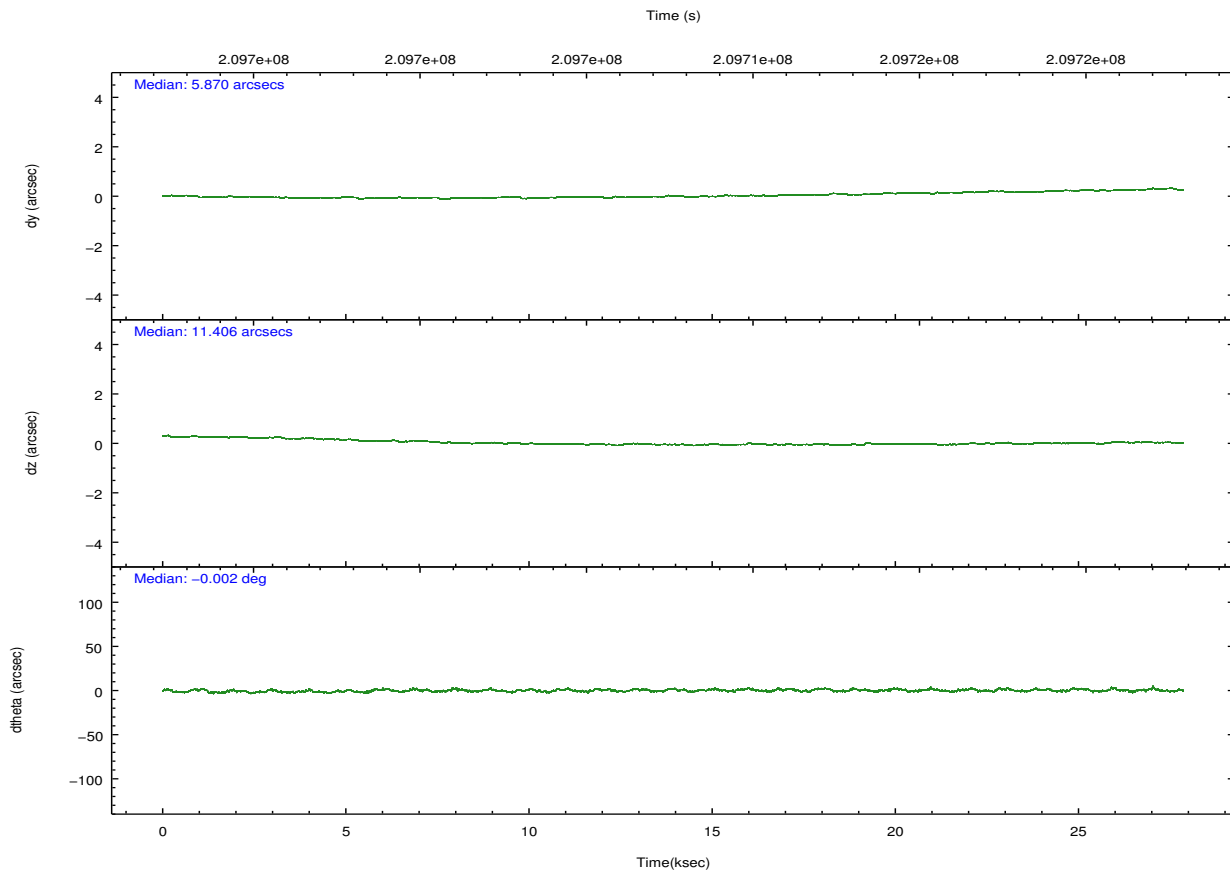
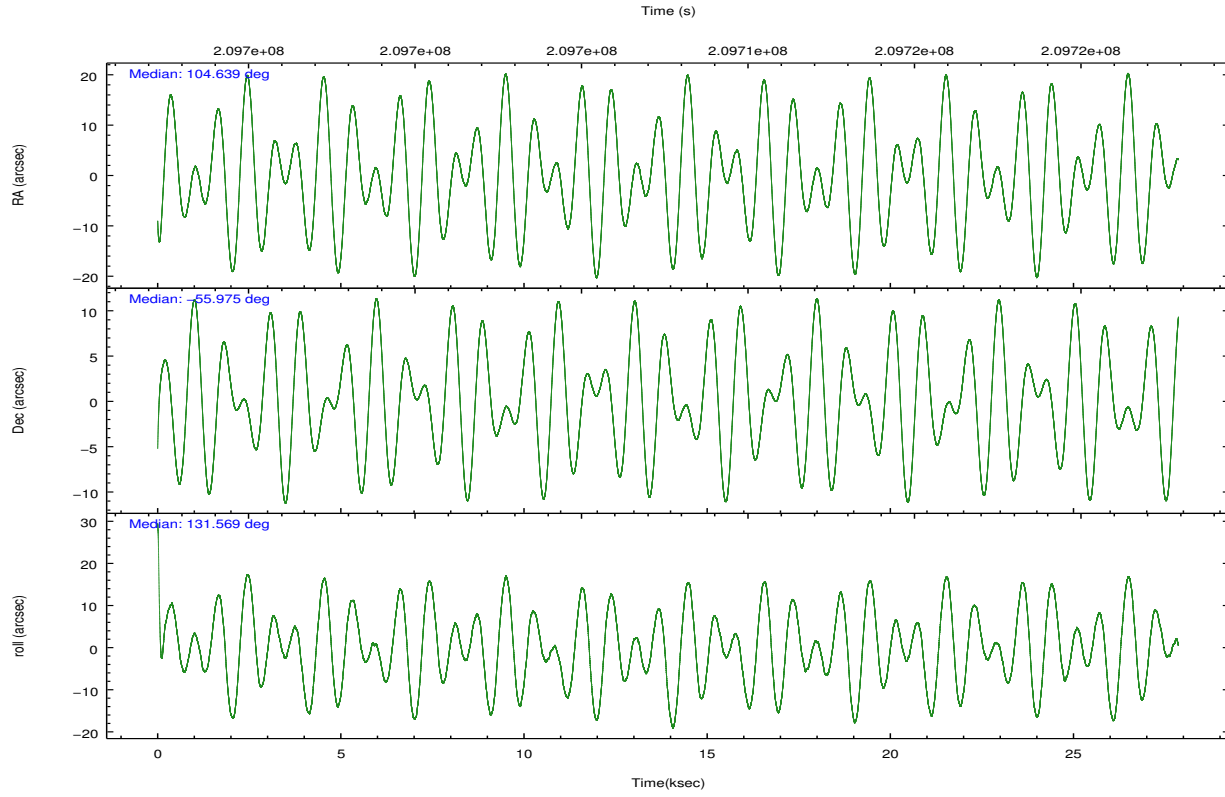
	ccd 0	ccd 1	ccd 2	ccd 3	ccd 6
level 1 events	172222	171164	221322	186177	183545
rejected events	152232	148973	169438	162575	162786
rejected %	88%	87%	76%	87%	88%

	ccd 0	ccd 1	ccd 2	ccd 3	ccd 6
grade 0 events	8295	9423	35014	12026	8925
	4%	5%	15%	6%	4%
grade 1 events	97	105	296	133	78
	0%	0%	0%	0%	0%
grade 2 events	4526	4650	7511	4390	4266
	2%	2%	3%	2%	2%
grade 3 events	2245	2406	3093	2247	2157
	1%	1%	1%	1%	1%
grade 4 events	2029	2364	3102	2134	2131
	1%	1%	1%	1%	1%
grade 5 events	6229	6765	5989	7019	7086
	3%	3%	2%	3%	3%
grade 6 events	3542	4086	4111	3519	4011
	2%	2%	1%	1%	2%
grade 7 events	145259	141365	162206	154709	154891
	84%	82%	73%	83%	84%

2.2 Compared Parameters

Parameter	Planned	Actual	Parameter	Planned	Actual
Instrument	ACIS	ACIS	Obspar format version number	7	7
Detector	ACIS-01236	ACIS-01236	Obspar file type	PREDICTED	ACTUAL
Grating	NONE	NONE	Obspar update status	NONE	UPDATED
Data mode	VFAINT	VFAINT	Number of optional ACIS chips dropped	0	0
Observation mode	POINTING	POINTING	On-chip summing requested	N	N
[deg] Pointing RA	104.685557	104.6390621975007	Subarray requested	NONE	NONE
[deg] Pointing Dec	-55.983181	-55.9746376926634	Alternating exposures requested	N	N
[deg] Pointing Roll	131.409612	131.5797825651616	[s] Primary exposure time	0.000000	3.1
[mm] SIM focus pos	-0.782348	-0.7809083437167272			
[mm] SIM defocus	0	0.001439871863259334			
[mm] SIM translation stage pos	-224.592463	-224.5962429424501			
[mm] SIM translation stage offset	-9	-8.996210060479569			
[s] Observation start time (MET)	209693788.184000	209692281.74624			
Observation start date	2004-08-24T00:15:24	2004-08-23T23:51:21			
[s] Observation end time (MET)	209721531.184000	209721766.89755			
Observation end date	2004-08-24T07:57:47	2004-08-24T08:02:46			
Read mode	TIMED	TIMED			

2.3 Aspect

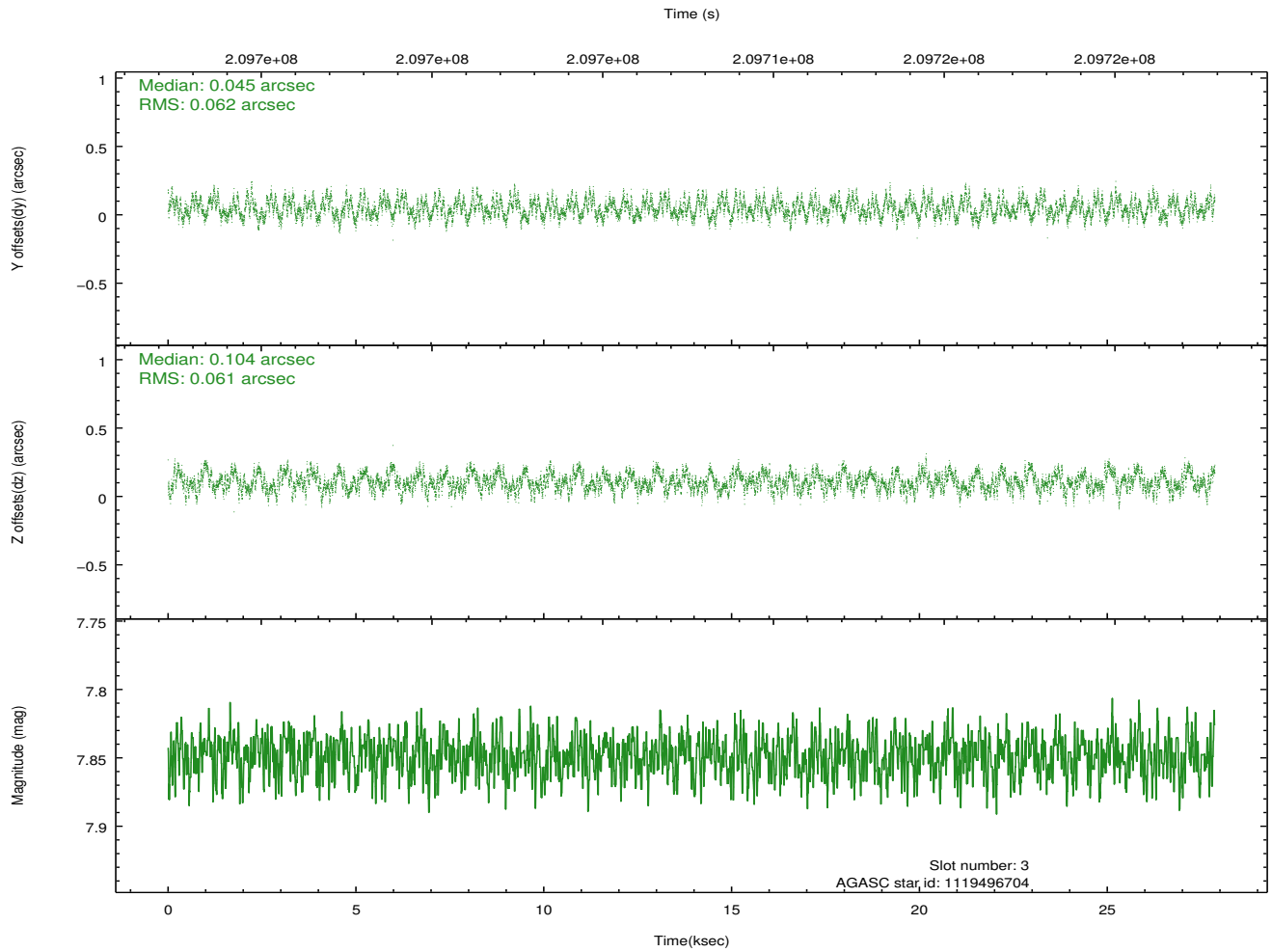
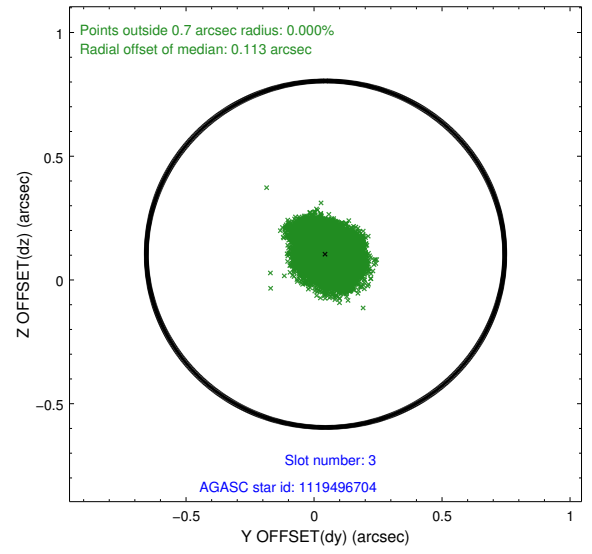
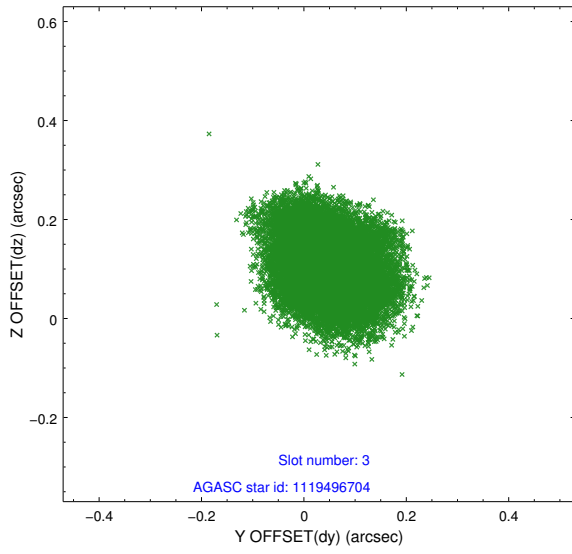


Slot Statistics

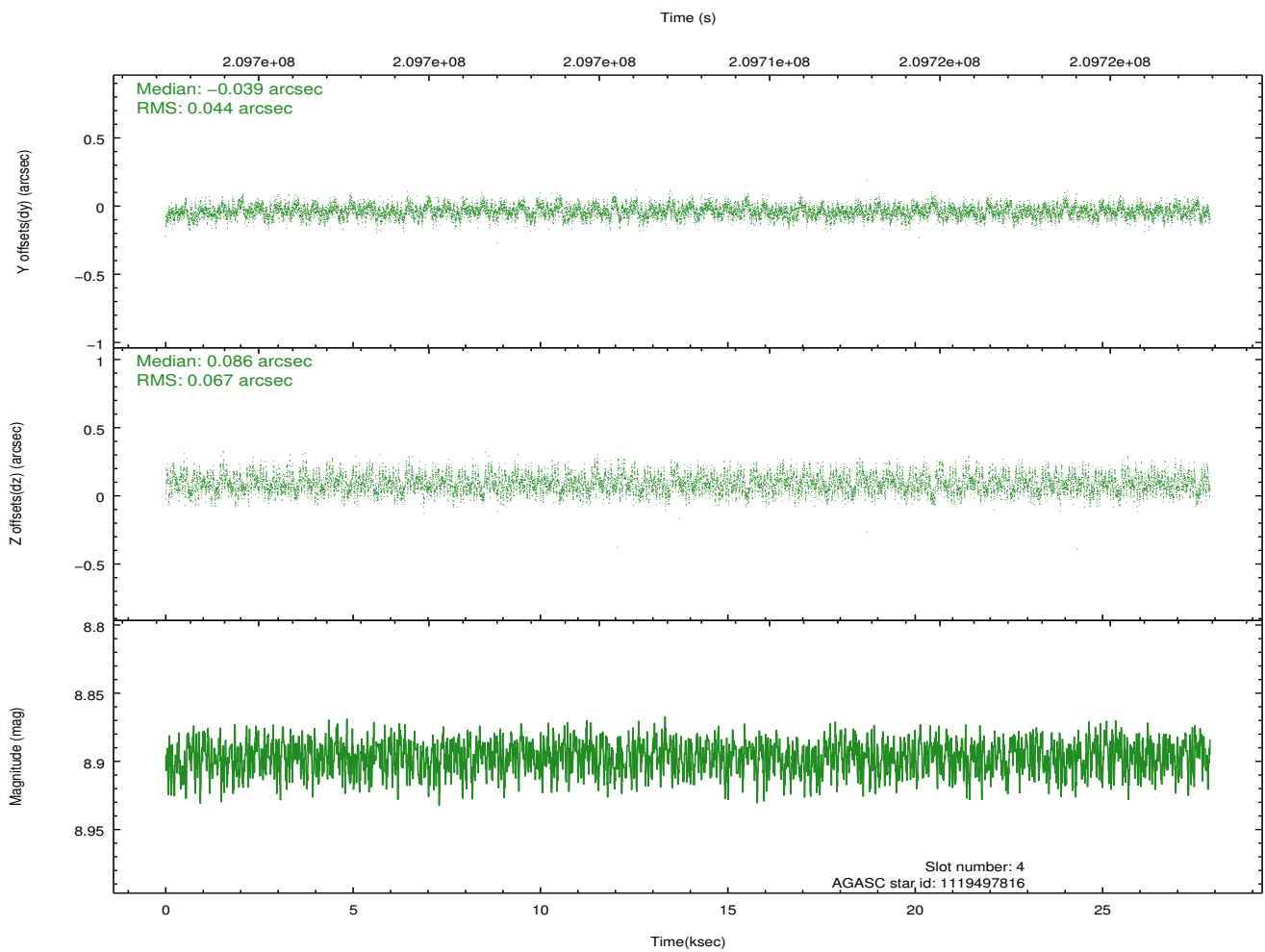
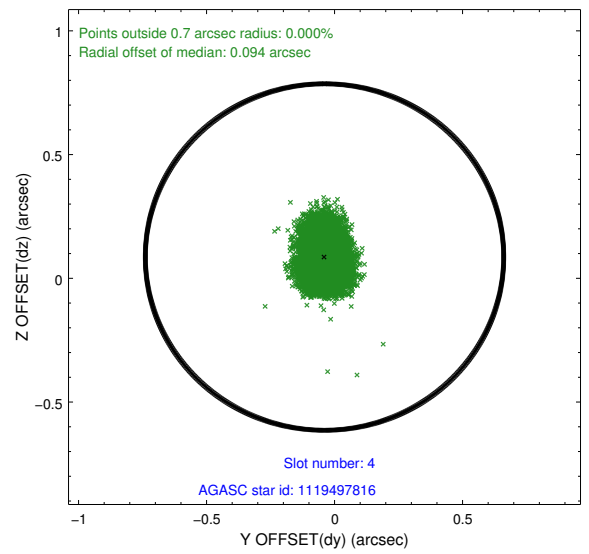
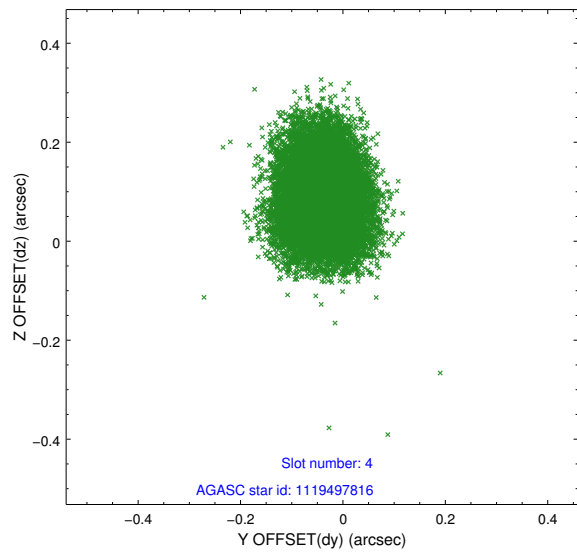
slot	status	id	mag	n_pts	med_dy	med_dz	dr1	dr2	ra	dec	mean_y	mean_z
0	FID	ACIS-I-2	7.17	6794	-0.047	-0.067	0.012	0.029	0.000000	0.000000	-761.06	-1024.89
1	FID	ACIS-I-4	7.14	6794	0.073	0.053	0.010	0.018	0.000000	0.000000	2153.03	881.28
2	FID	ACIS-I-5	7.21	6796	-0.126	0.083	0.015	0.026	0.000000	0.000000	-1814.38	878.11
3	GUIDE	1119496704	7.85	13589	0.045	0.104	0.096	0.143	104.368364	-55.667750	1276.77	-266.72
4	GUIDE	1119497816	8.90	13584	-0.039	0.086	0.085	0.139	105.863109	-55.810214	-1123.21	-2185.11
5	GUIDE	1120026344	6.70	13590	-0.069	-0.028	0.077	0.124	104.651539	-56.394853	-1066.96	1030.96
6	GUIDE	1119493144	9.26	13582	0.034	-0.062	0.107	0.181	104.842787	-55.103632	2161.12	-2336.50
7	GUIDE	1120022760	9.33	13584	0.025	-0.102	0.132	0.211	103.957300	-56.525557	-513.82	2380.74

2.4 Star Slots

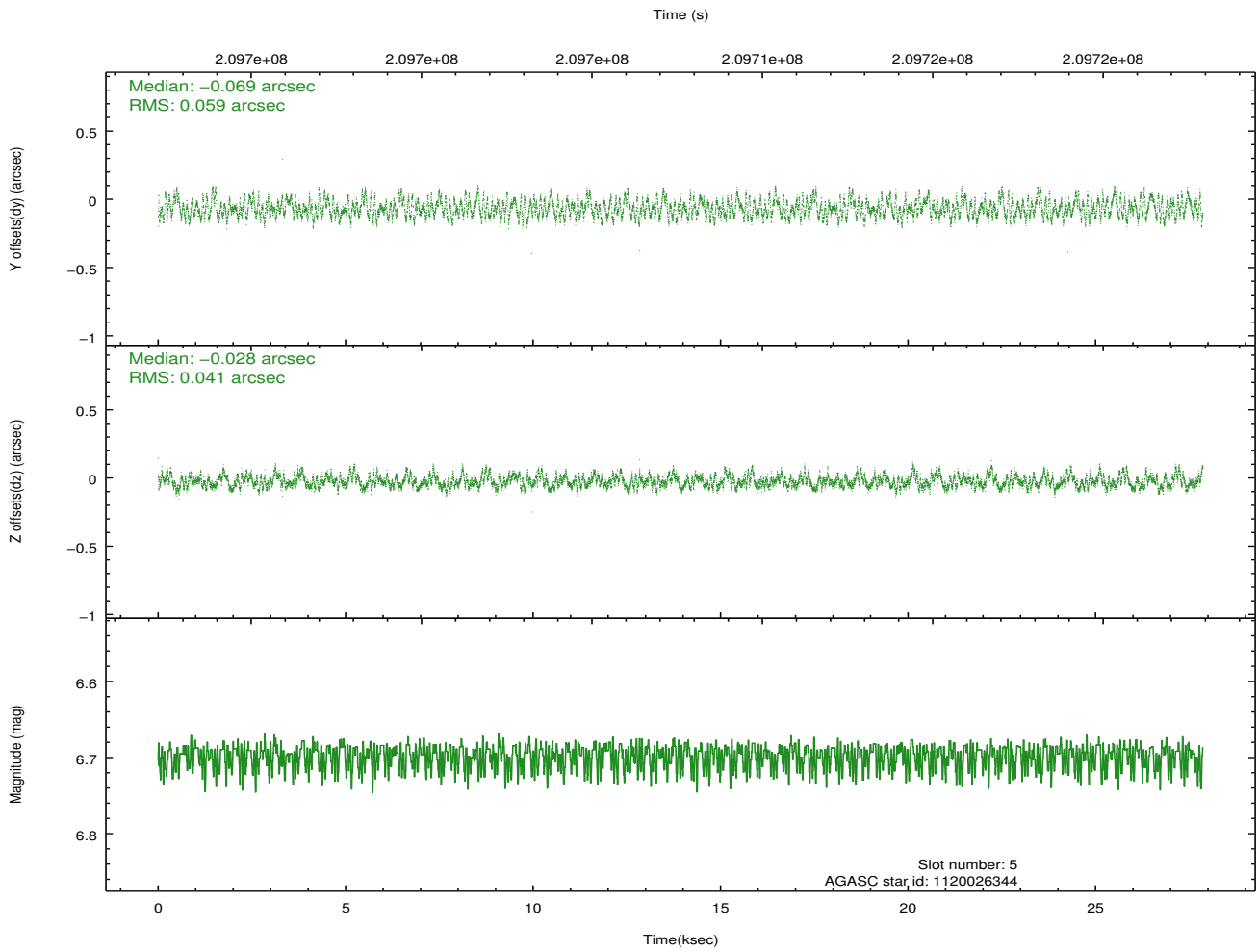
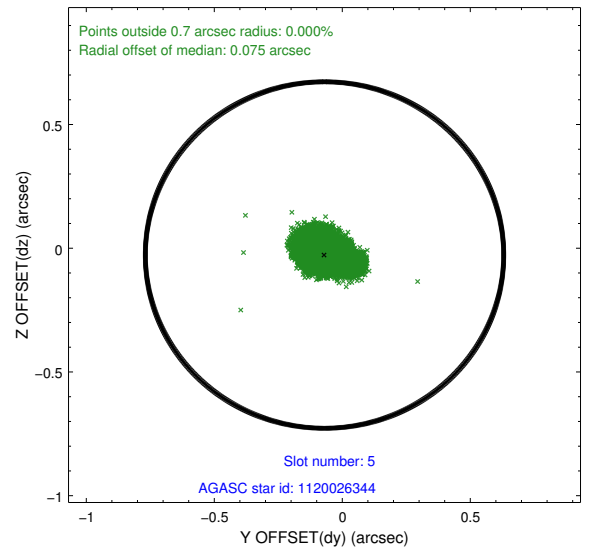
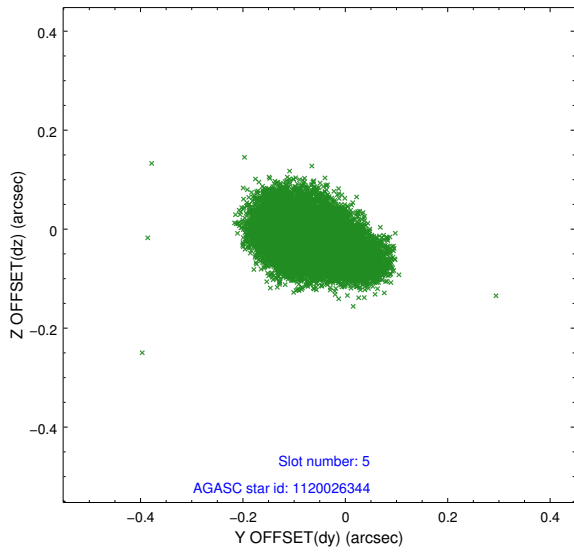
2.4.1 Slot 3



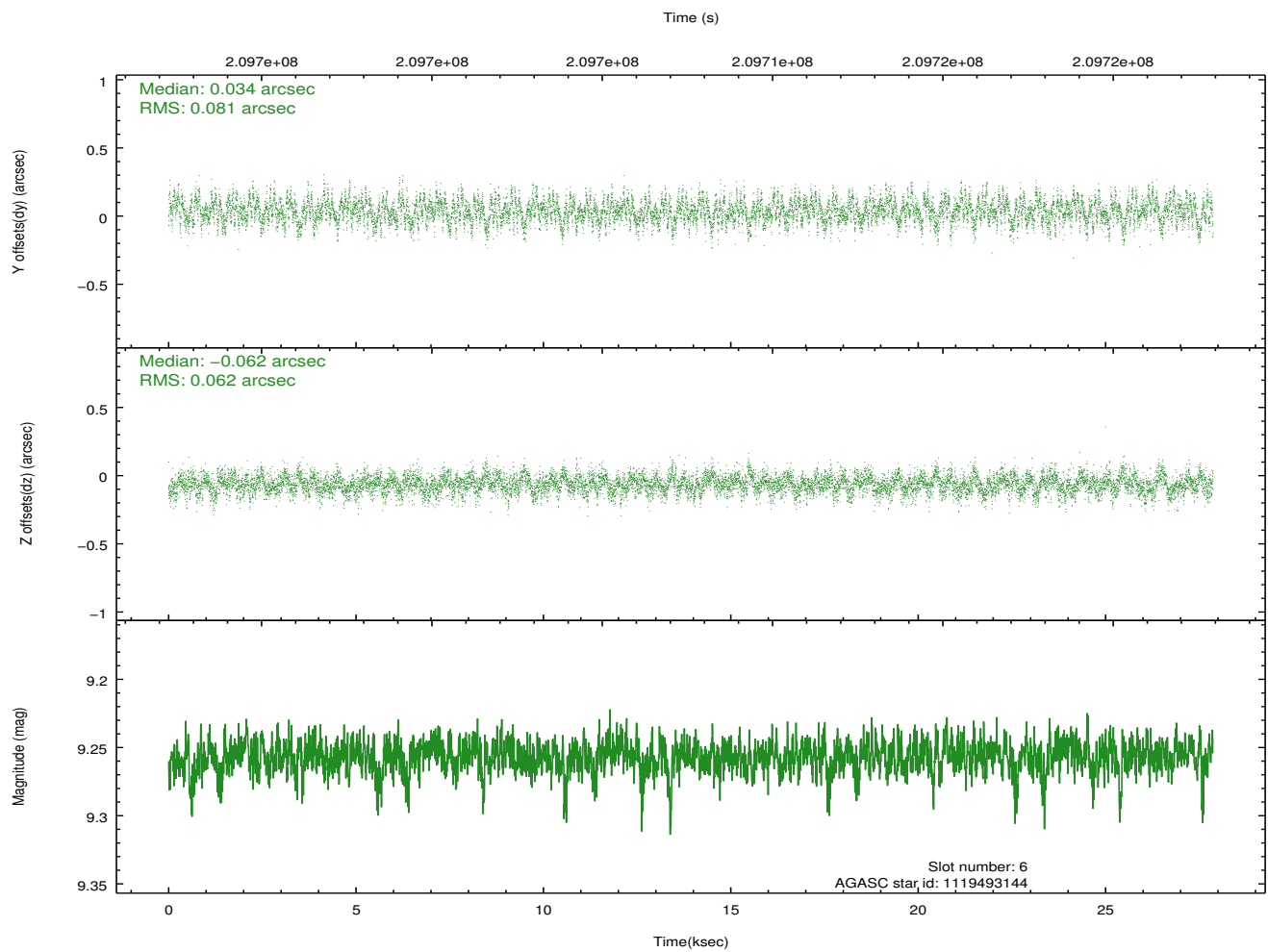
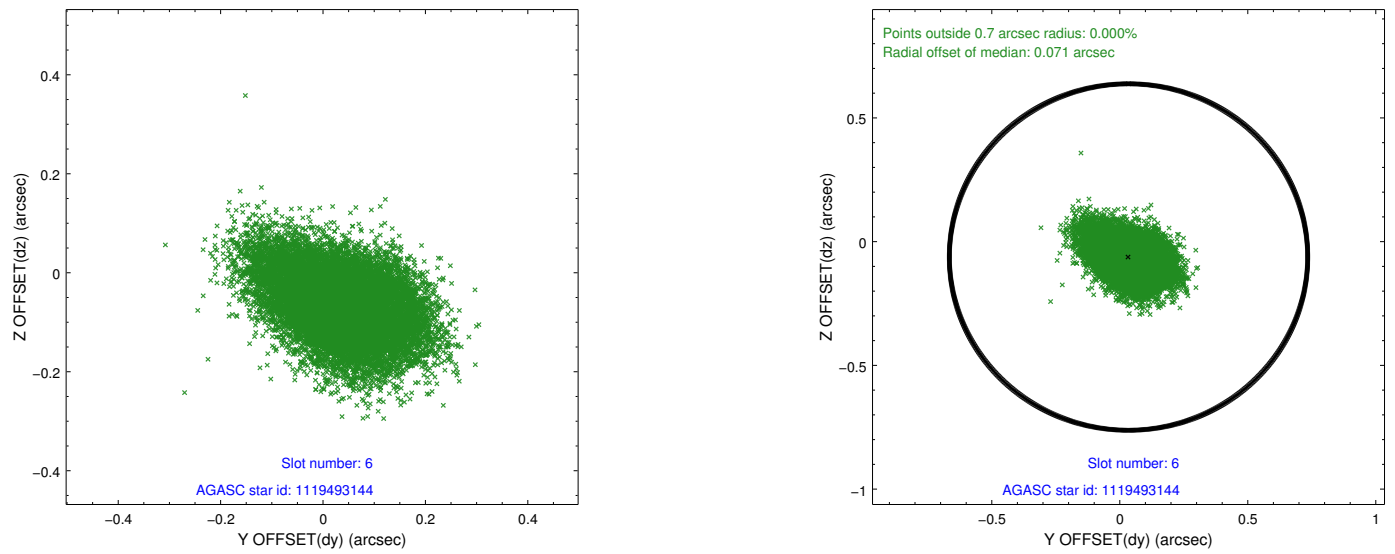
2.4.2 Slot 4



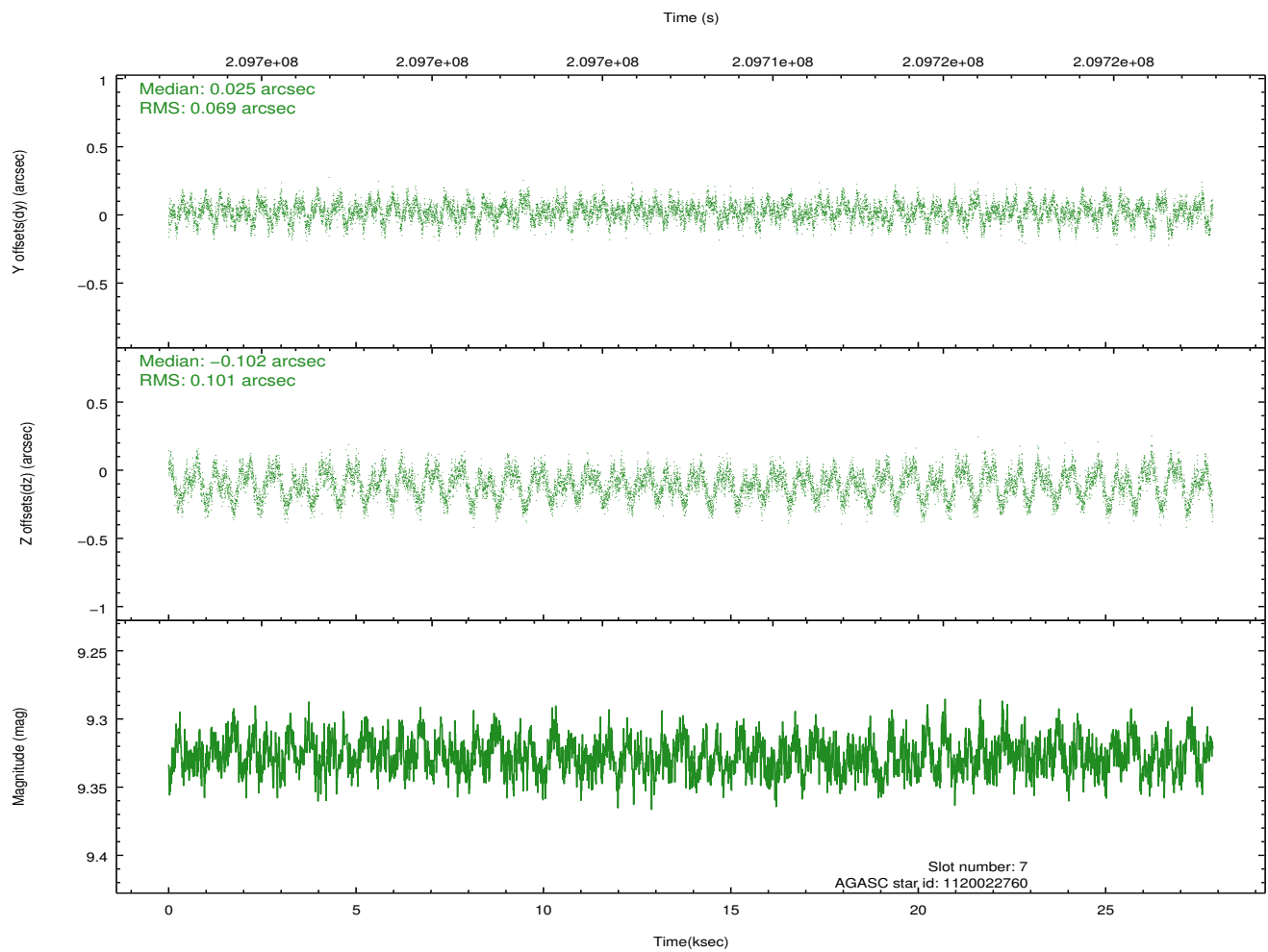
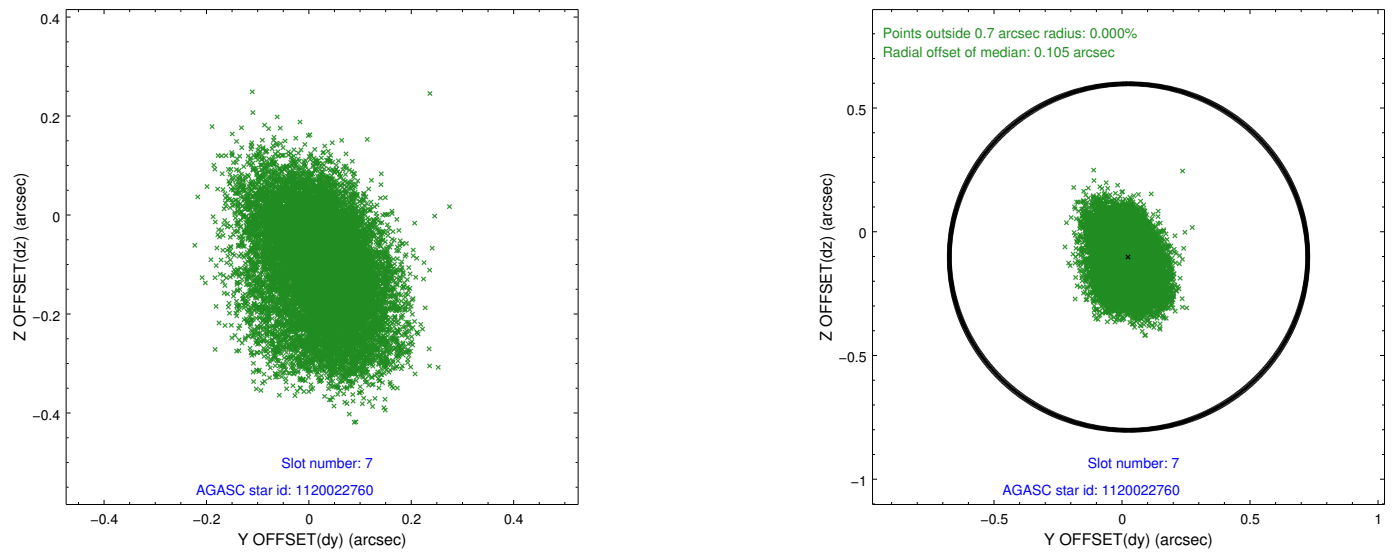
2.4.3 Slot 5



2.4.4 Slot 6

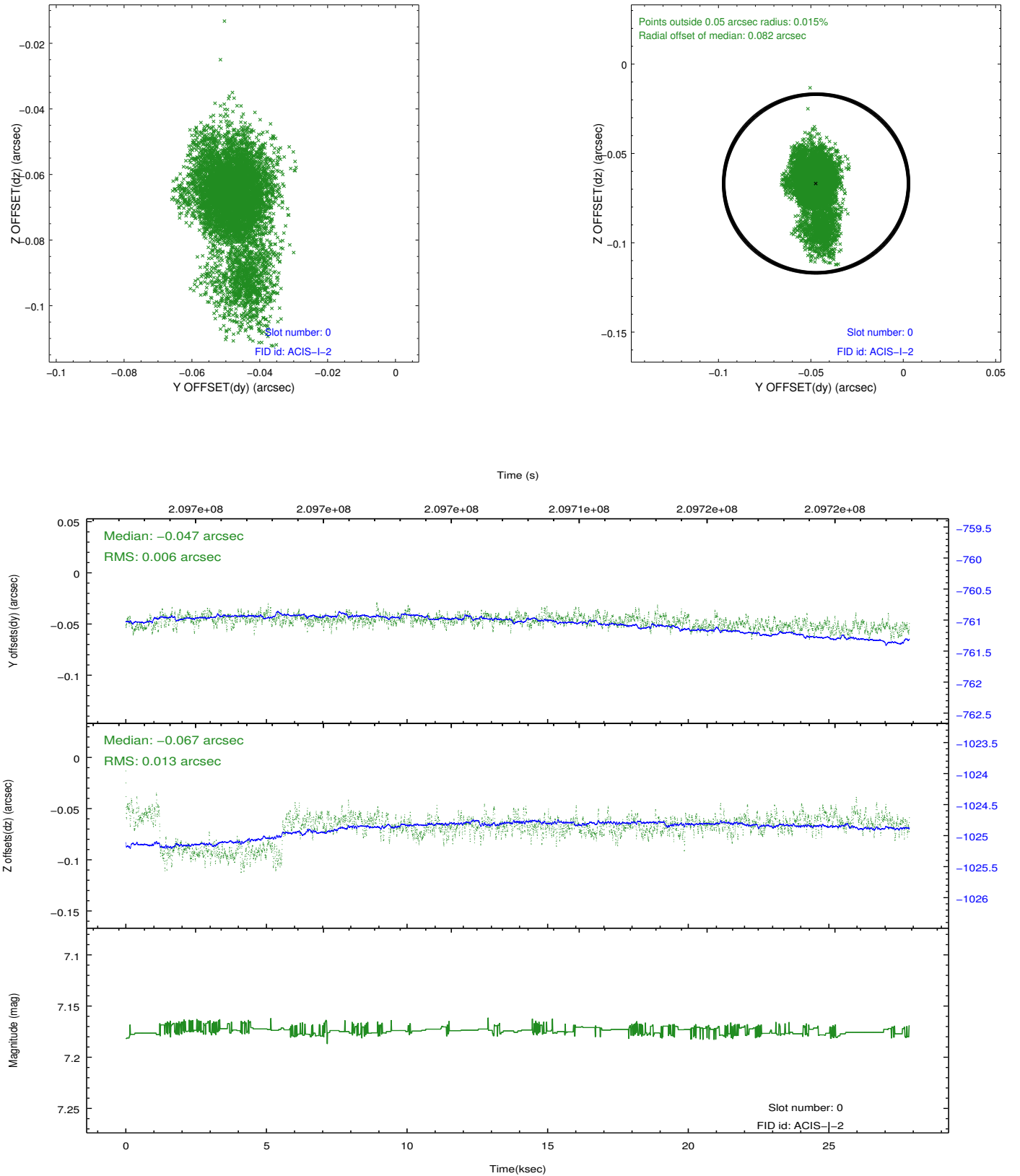


2.4.5 Slot 7

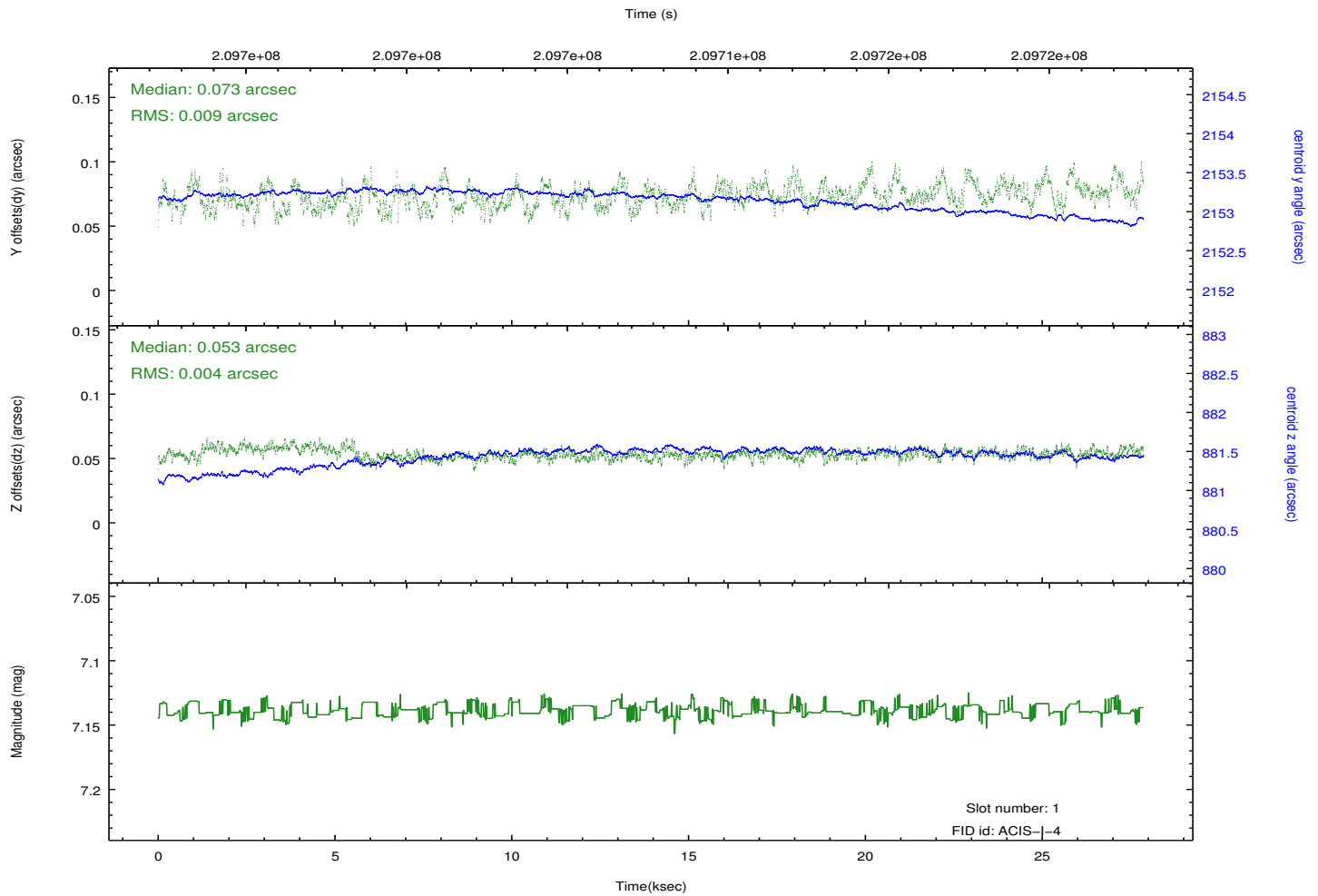
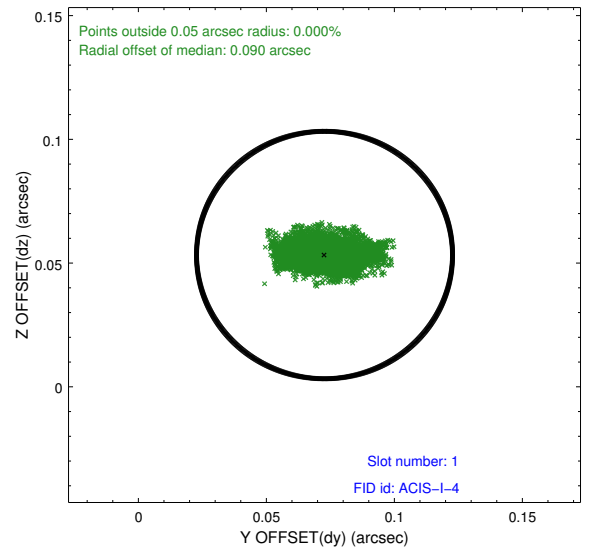
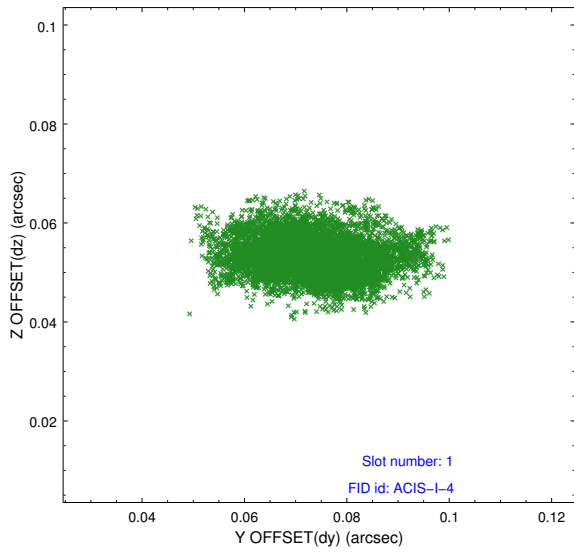


2.5 FID Slots

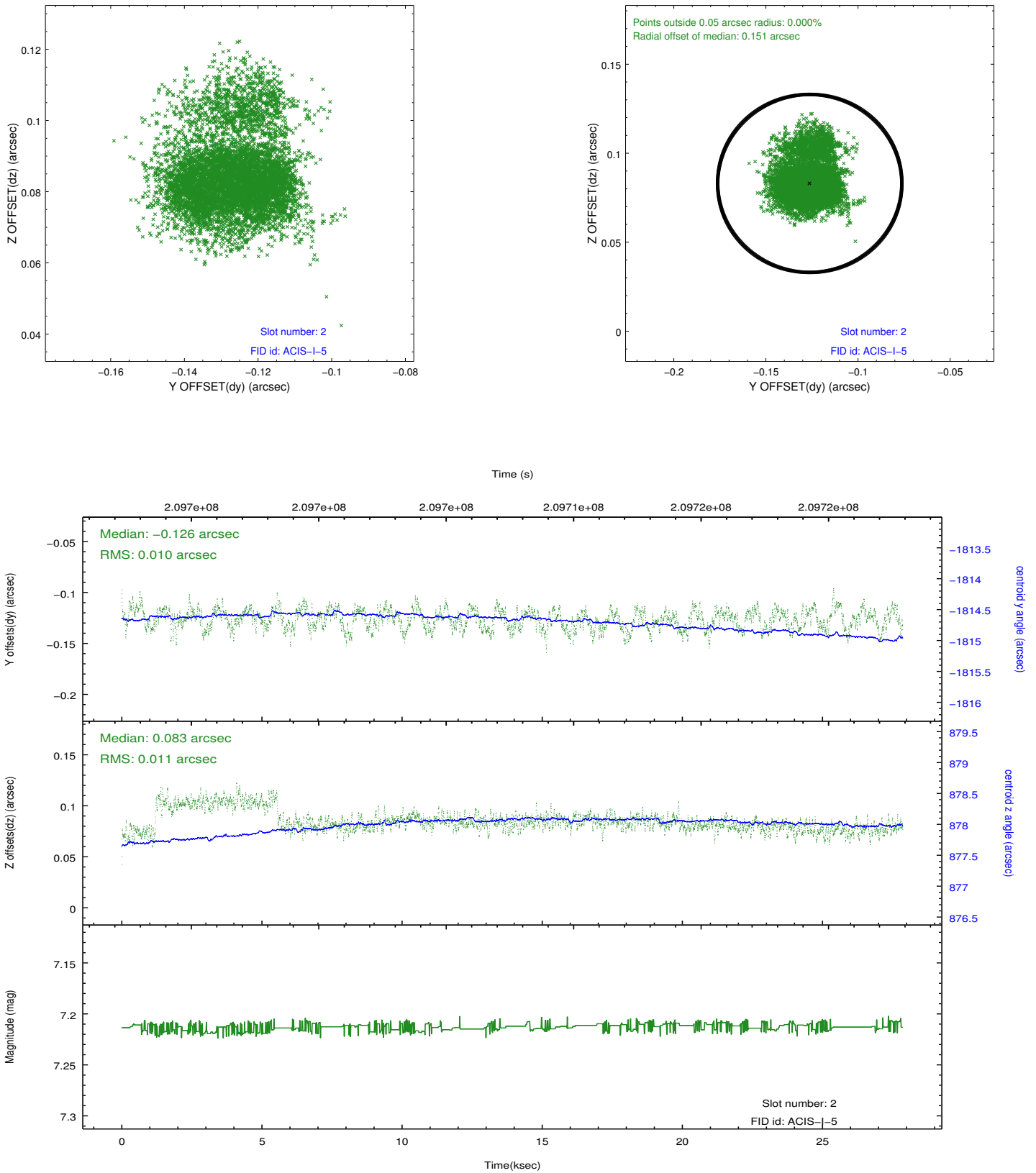
2.5.1 Slot 0



2.5.2 Slot 1



2.5.3 Slot 2



A Summary

A.1 Status

V&V Scientist	Jen Lauer
V&V Date (YYYY-MM-DD)	2012.12.21
V&V Edition	1
V&V Disposition and Status	OK
V&V Charge Time	27.853

A.2 Comments