

V&V Reference Report

L2 ASCDS Version : 8.5

Observation 5175 - L2 Version 6
Chandra X-Ray Center

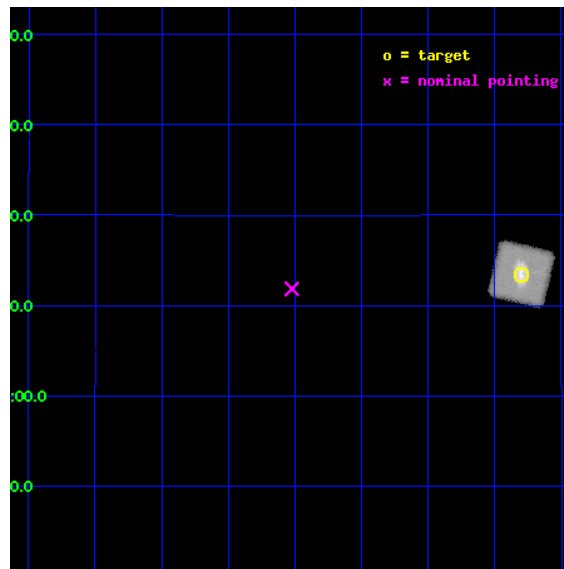
L2 Processing Date : Dec 12 2012

Contents

1	Front	2
2	OBI	3
2.1	OBI	3
2.1.1	Images	3
2.1.2	Parameters	4
2.1.3	Events	4
2.2	Compared Parameters	5
2.3	Aspect	6
2.4	Star Slots	9
2.4.1	Slot 3	9
2.4.2	Slot 4	10
2.4.3	Slot 5	11
2.4.4	Slot 6	12
2.4.5	Slot 7	13
2.5	FID Slots	14
2.5.1	Slot 0	14
2.5.2	Slot 1	15
A	Summary	16
A.1	Status	16
A.2	Comments	16

1 Front

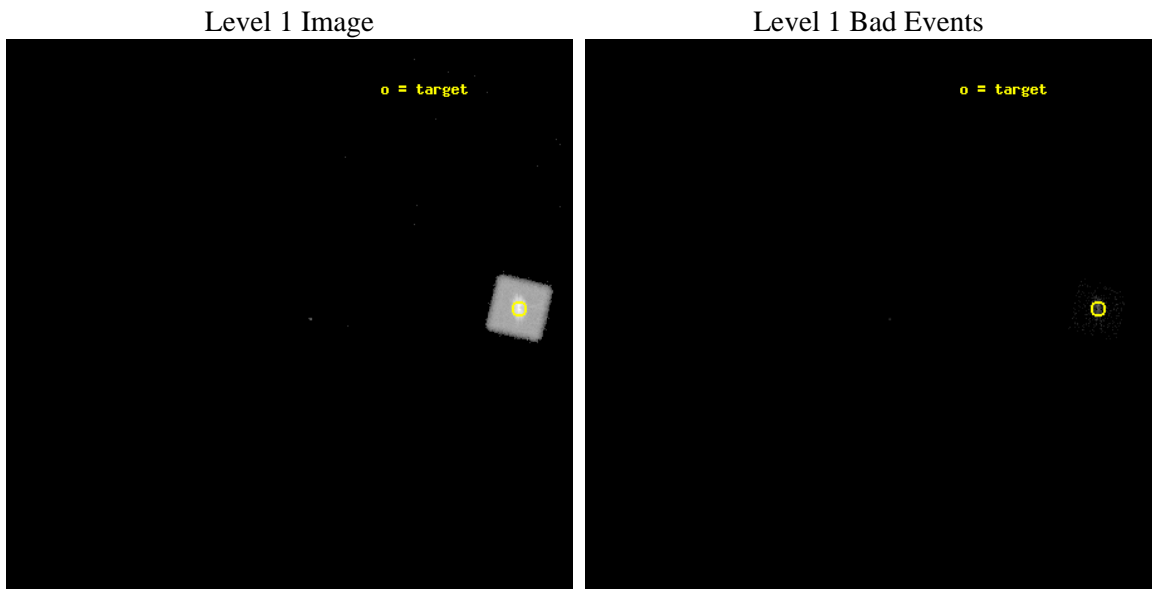
seq_num	990003	Sequence number
obs_id	5175	Observation id
title	AO5 Calibration Observations of the ACIS charged particle background	
observer	Dr. CXC Calibration	Principal investigator
object	Procyon	Source name
ra_targ	114.8245	Observer's specified target RA [deg]
dec_targ	5.223583	Observer's specified target Dec [deg]
ra_nom	115.25575635425	Nominal RA [deg]
dec_nom	5.1974643763819	Nominal Dec [deg]
roll_nom	58.555603267206	Nominal Roll [deg]
revision	6	Processing version of data
ontime	46510.402094364	[s]
livetime	39146.107818126	Ontime multiplied by DTCOR
l2events	96501	Number of level 2 events



2 OBI

2.1 OBI

2.1.1 Images



2.1.2 Parameters

obi_num	0	Obi number	sched_exp_time	47000.000000	[s] Scheduled observation exposure time
ascdsver	8.5	Processing system revision	ontime	46543.202094376	[s]
caldbver	4.5.4	 	l1events	120552	Number of level 1 events
date	2012-12-12T15:21:06	Date and time of file creation			
revision	6	Processing version of data			

2.1.3 Events

Level 1 Events

	segment 0
level 1 events	120552
rejected events	2388
rejected %	1%

2.2 Compared Parameters

Parameter	Planned	Actual	Parameter	Planned	Actual
Instrument	HRC	HRC	Obspar format version number	7	7
Detector	HRC-I	HRC-I	Obspar file type	PREDICTED	ACTUAL
Grating	NONE	NONE	Obspar update status	OVERRIDE	OVERRIDE
Data mode	NEXT_IN_LINE	NEXT_IN_LINE			
Observation mode	POINTING	POINTING			
[deg] Pointing RA	115.2557418521788	115.2557563542453			
[deg] Pointing Dec	5.197440666923644	5.197464376381939			
[deg] Pointing Roll	58.55560457385924	58.55560326720585			
[s] Window start time (MET)	215654464.184000	215654464.184000			
[s] Window stop time (MET)	220838464.184000	220838464.184000			
[mm] SIM focus pos	-1.038866356238299	-1.038866356238299			
[mm] SIM defocus	0.00142623211714632	0.00142623211714632			
[mm] SIM translation stage pos	51.9960404362608	51.9960404362608			
[mm] SIM translation stage offset	74.989453869027	74.989453869027			
[s] Observation start time (MET)	219237161.184	219237161.184			
Observation start date	2004-12-12T11:21:32	2004-12-12T11:12:41			
[s] Observation end time (MET)	219284757.48812	219284757.48812			
Observation end date	2004-12-13T00:24:52	2004-12-13T00:25:57			

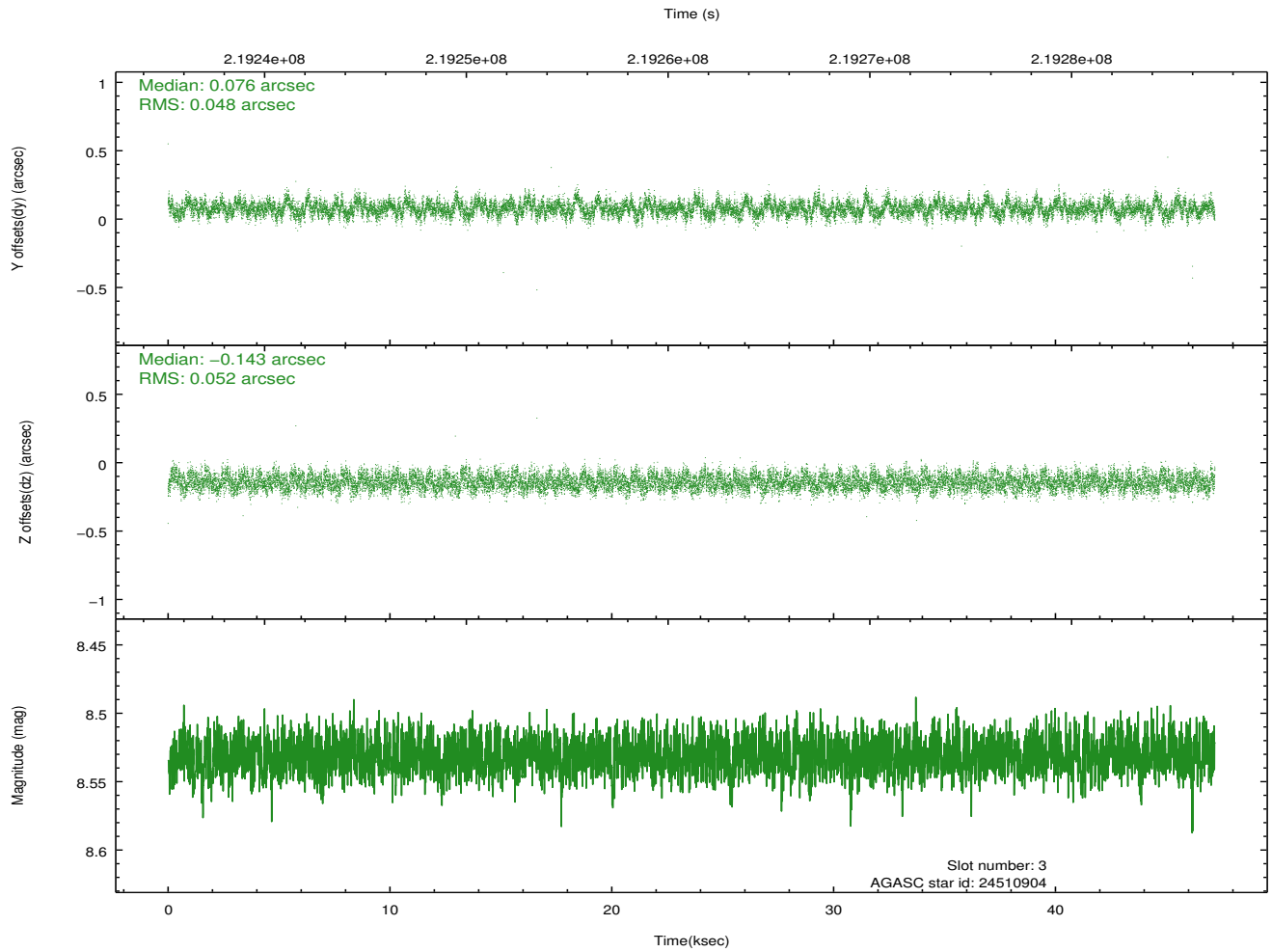
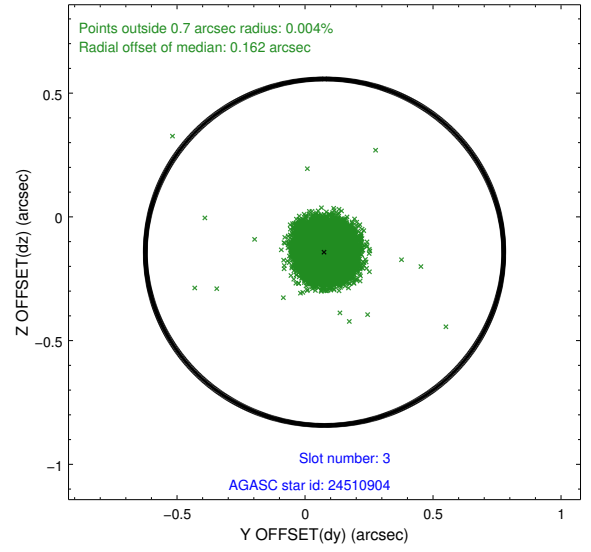
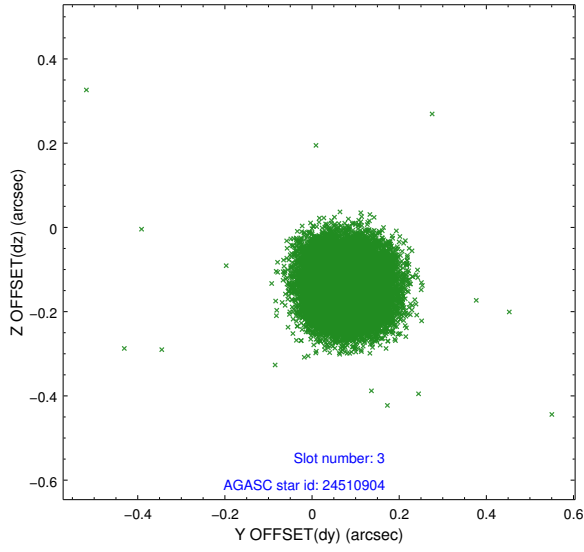
2.3 Aspect

Slot Statistics

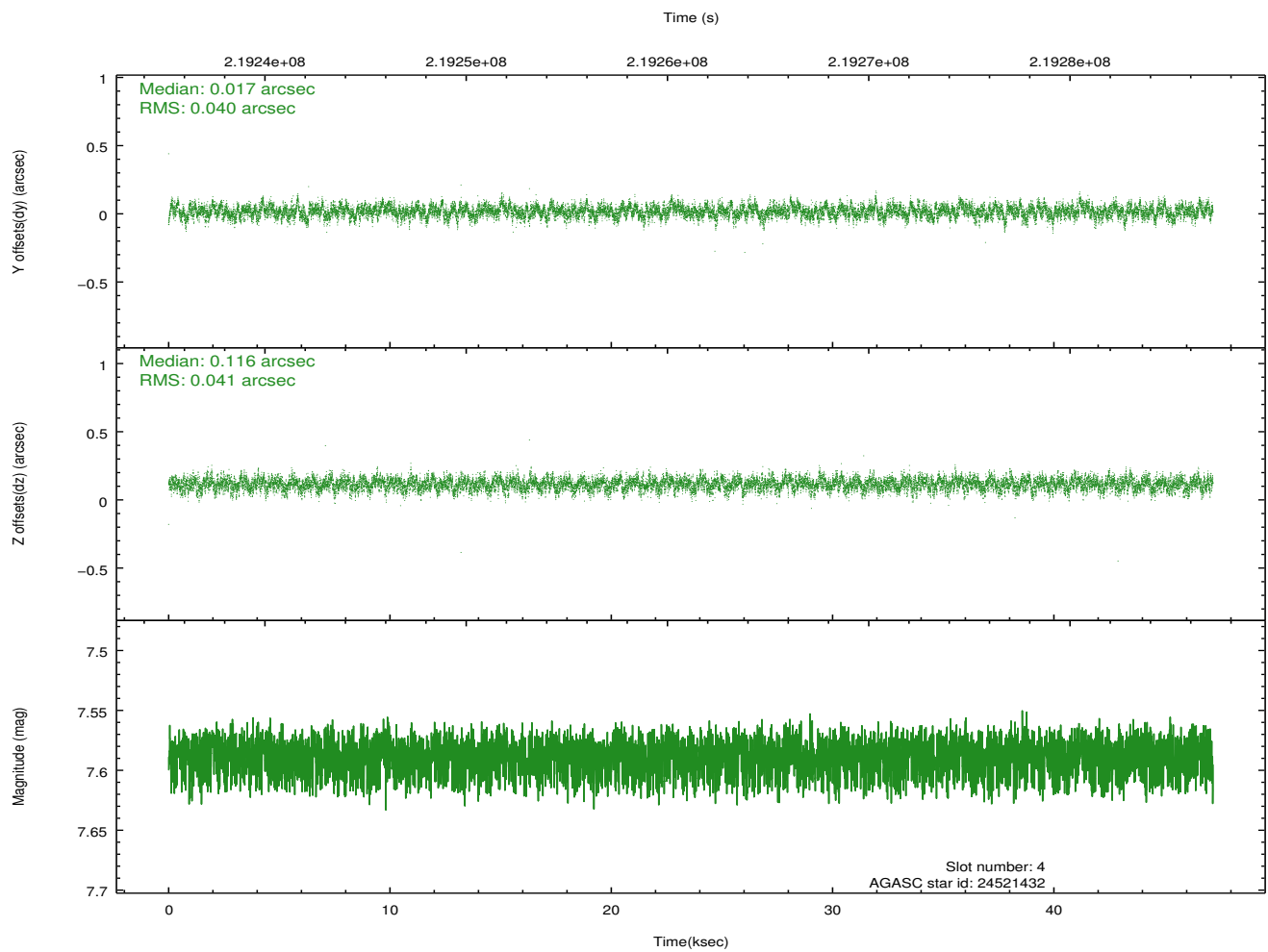
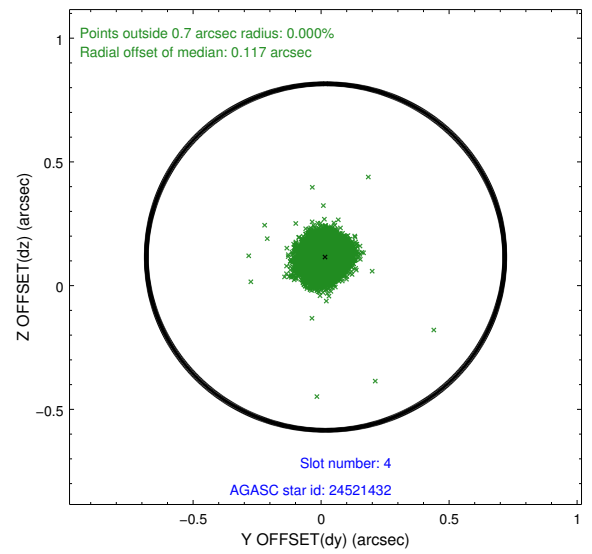
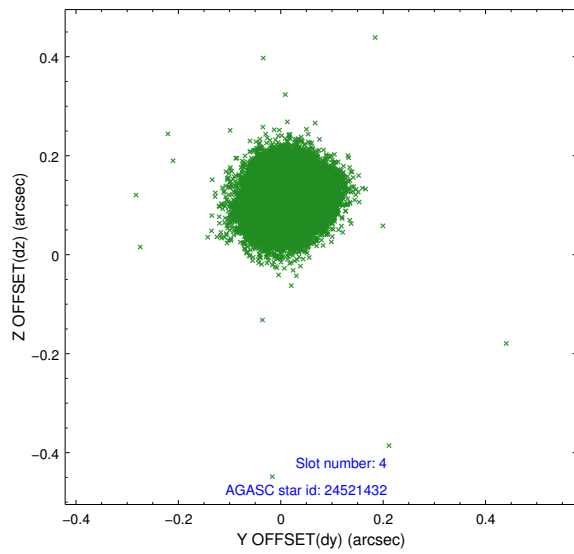
slot	status	id	mag	n_pts	med_dy	med_dz	dr1	dr2	ra	dec	mean_y	mean_z
0	FID	HRC-I-1	6.90	11508	-0.628	-0.028	0.005	0.013	0.000000	0.000000	-766.31	240.59
1	FID	HRC-I-2	7.03	11509	0.707	-0.026	0.005	0.013	0.000000	0.000000	844.51	241.62
2	UNUSED		0.00	0	0.000	0.000	0.000	0.000	0.000000	0.000000	0.00	0.00
3	GUIDE	24510904	8.53	23008	0.076	-0.143	0.076	0.119	115.291057	5.593366	1366.67	684.13
4	GUIDE	24521432	7.59	23015	0.017	0.116	0.061	0.097	115.643922	4.823397	-341.41	-1838.75
5	GUIDE	24522960	7.84	23020	0.019	0.158	0.060	0.096	115.195385	5.000625	-634.13	-133.03
6	GUIDE	24525600	8.30	23014	0.069	-0.119	0.077	0.122	114.573999	4.942945	-1969.99	1662.68
7	GUIDE	25039776	8.64	22995	-0.185	-0.012	0.061	0.099	115.184333	5.805632	1820.02	1408.44

2.4 Star Slots

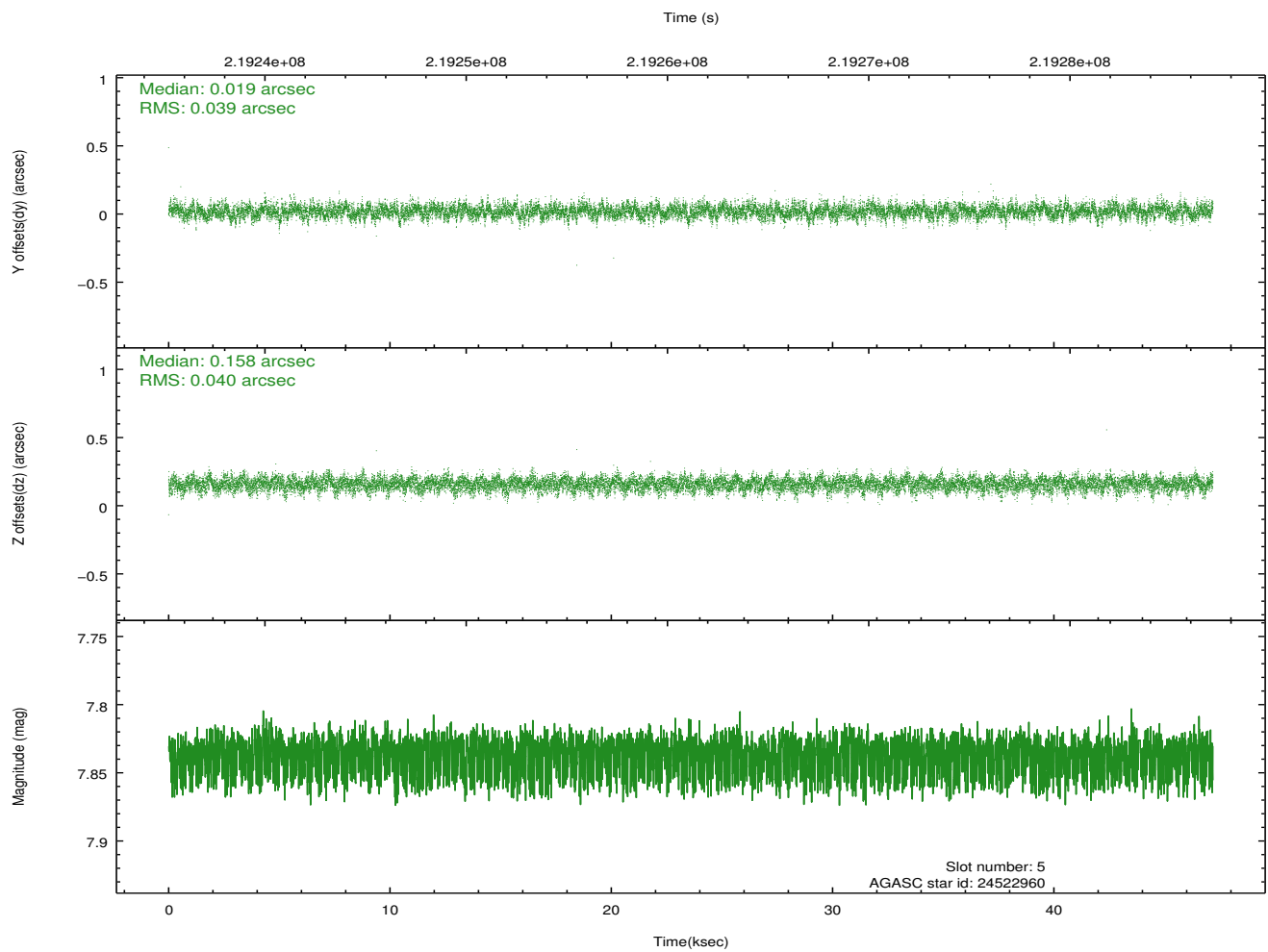
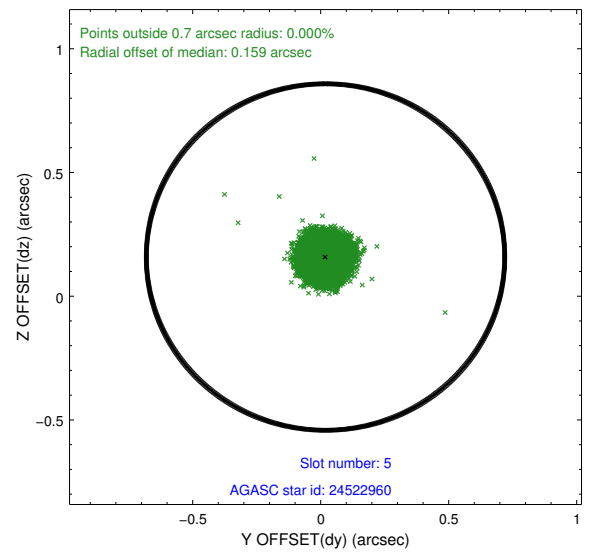
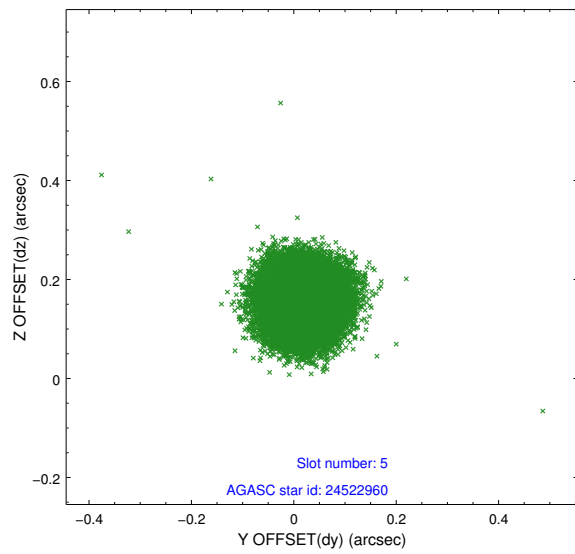
2.4.1 Slot 3



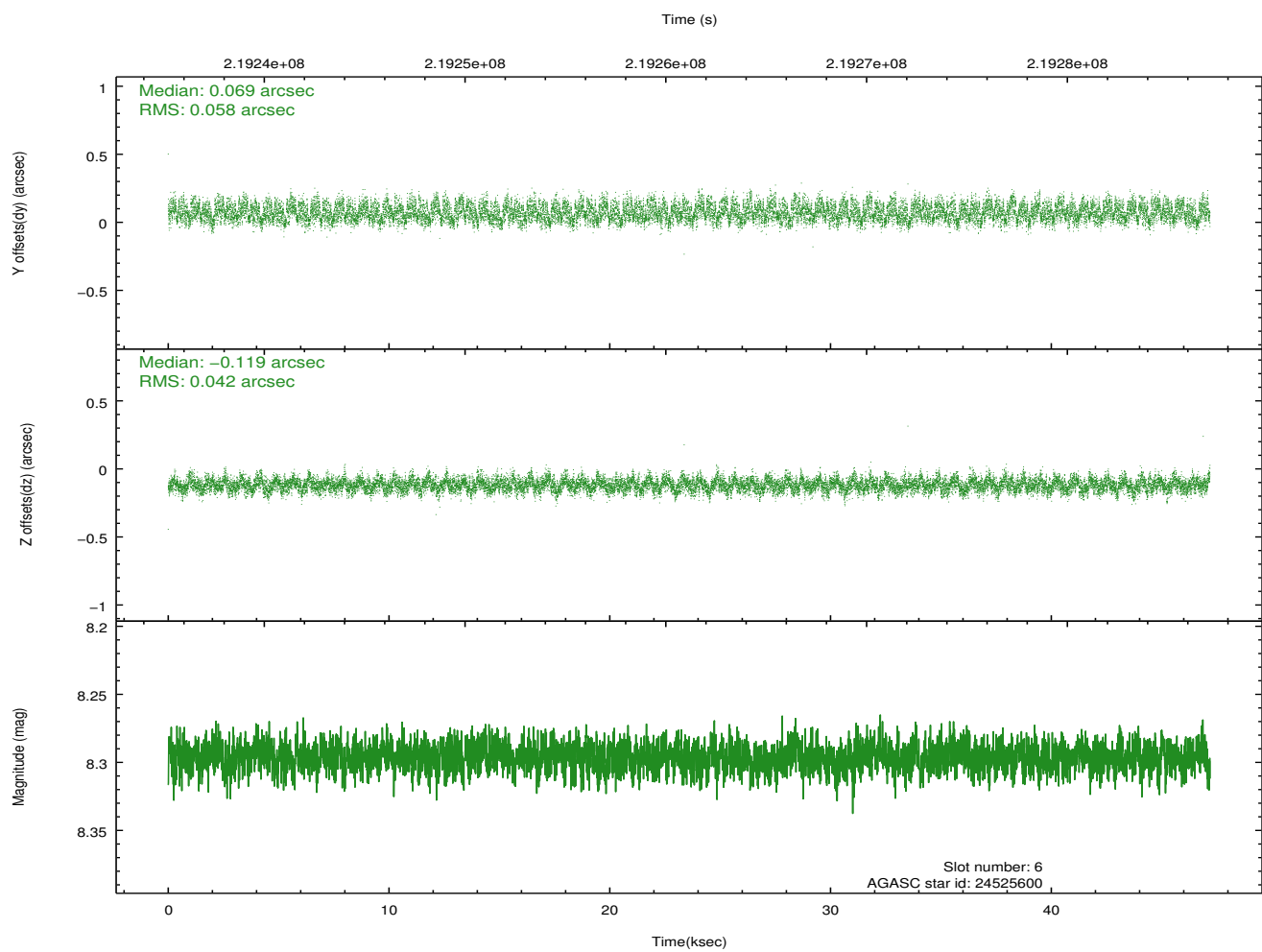
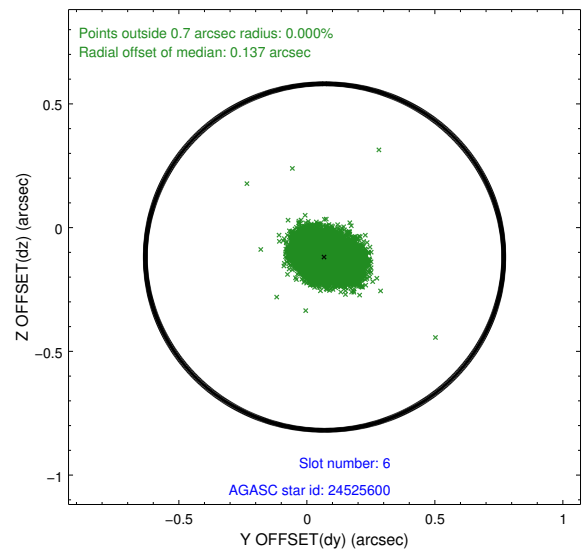
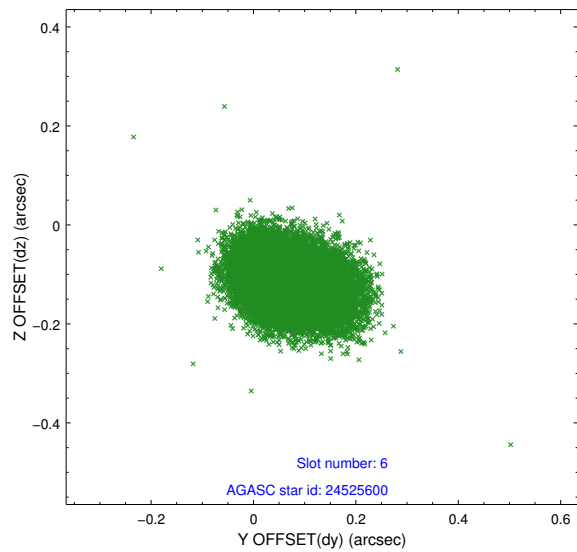
2.4.2 Slot 4



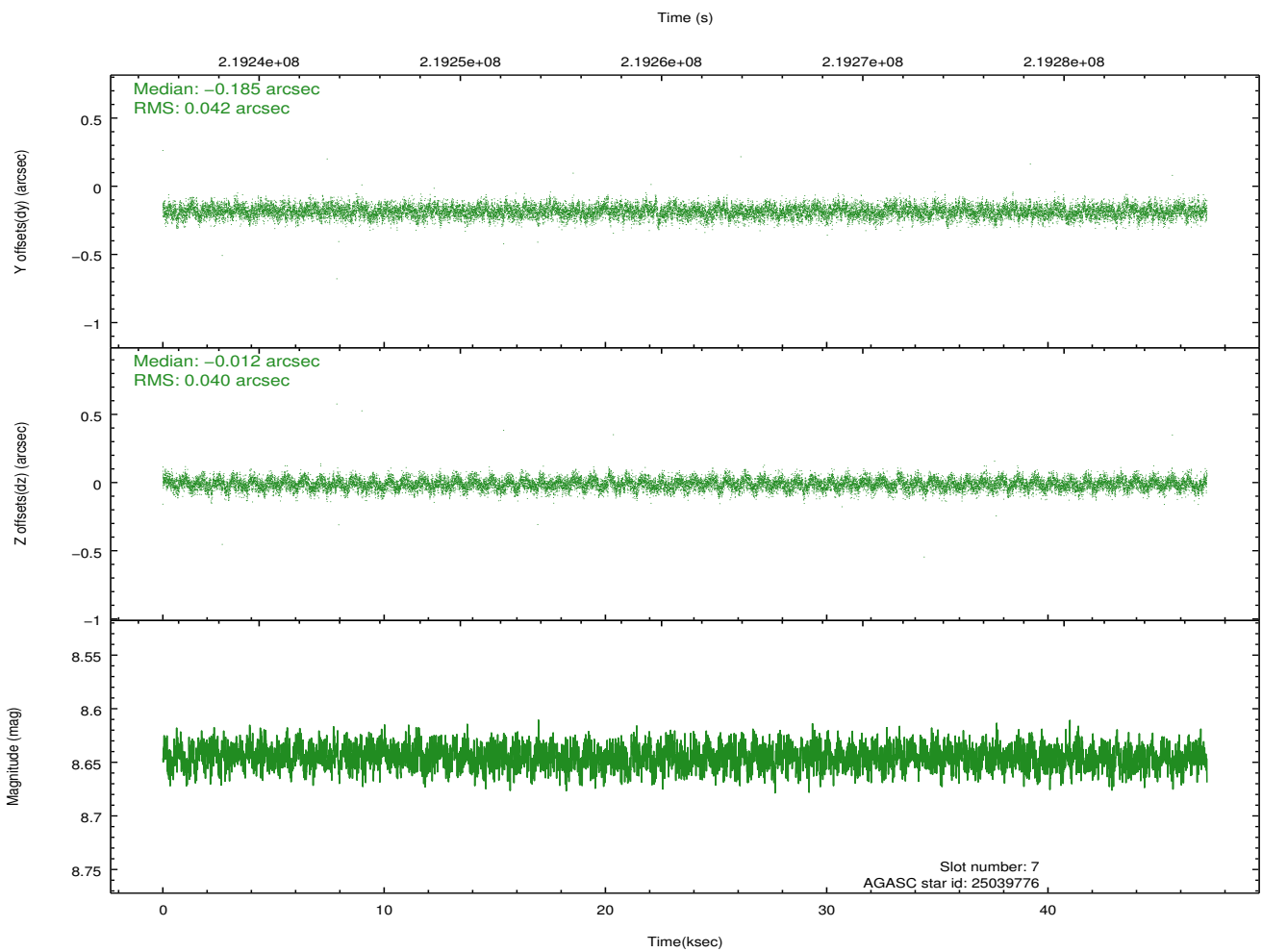
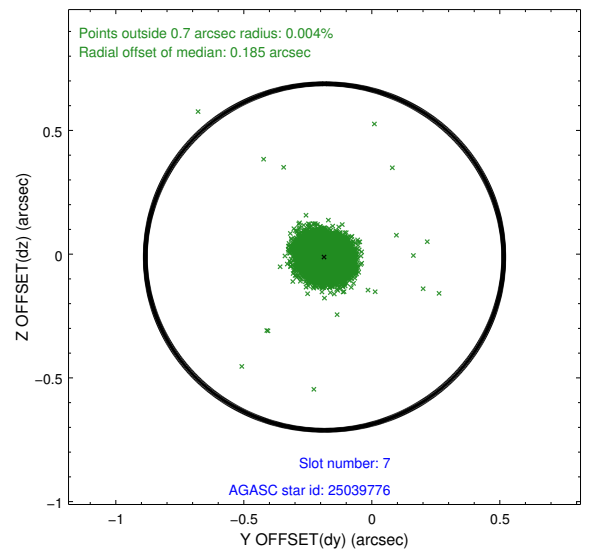
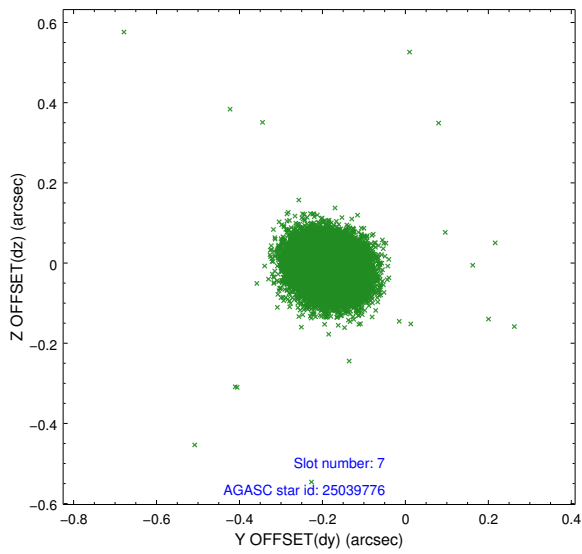
2.4.3 Slot 5



2.4.4 Slot 6

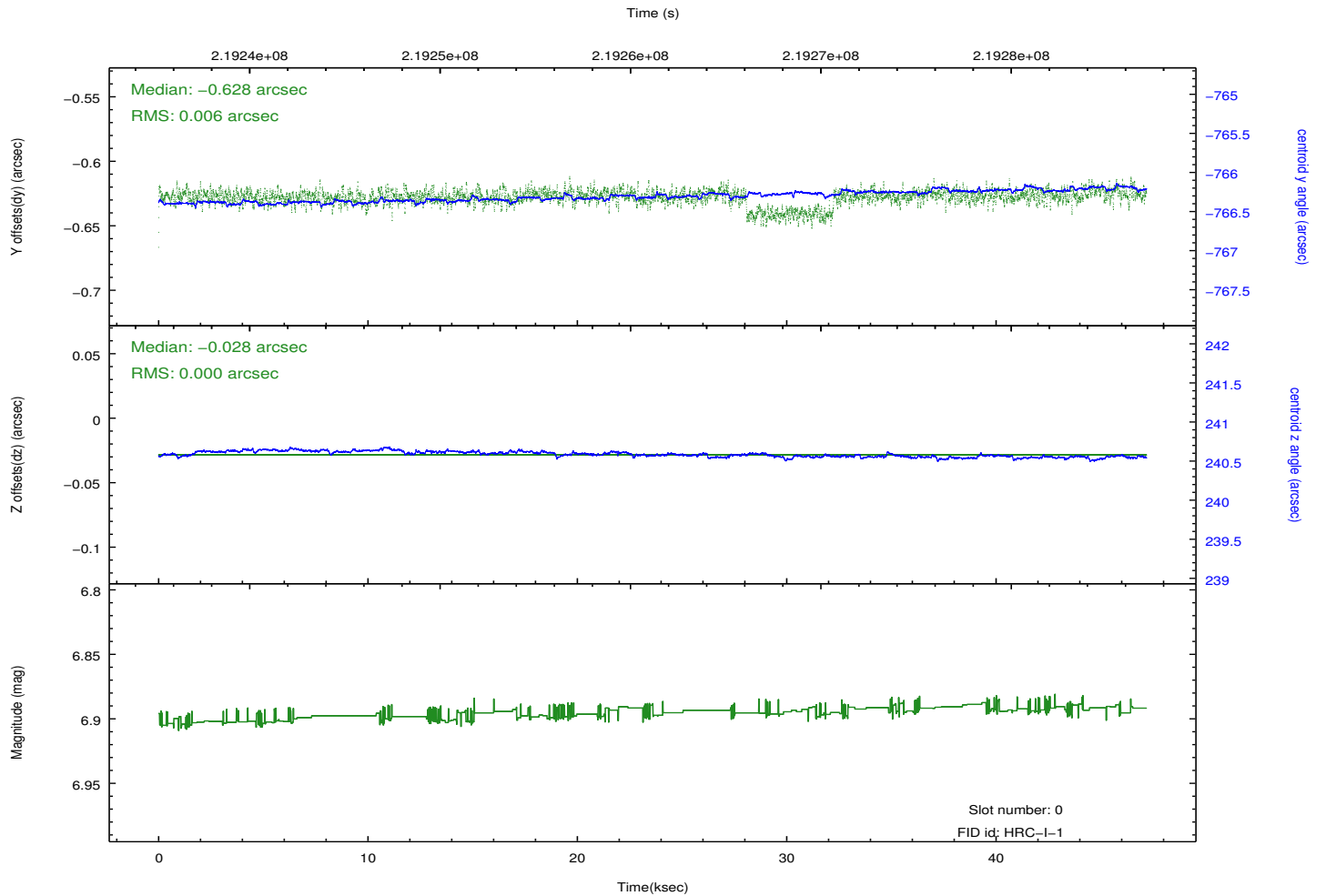
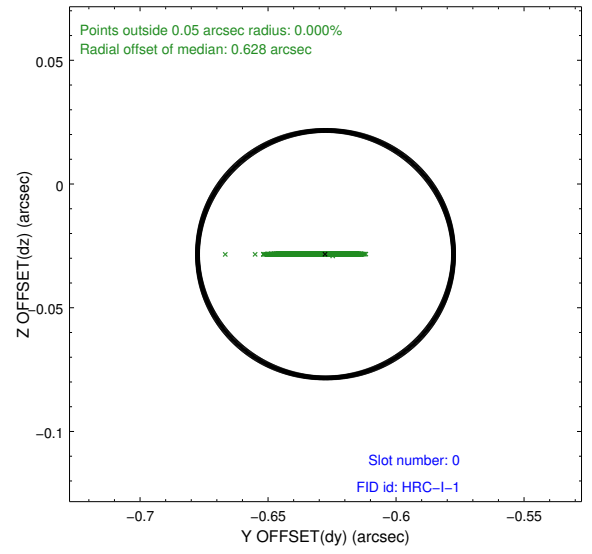
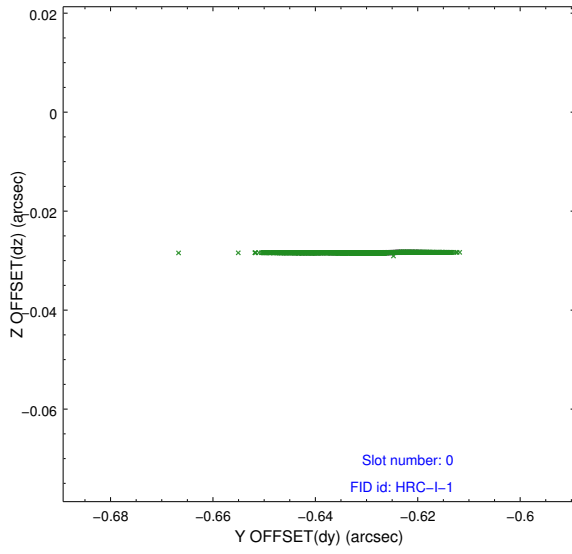


2.4.5 Slot 7

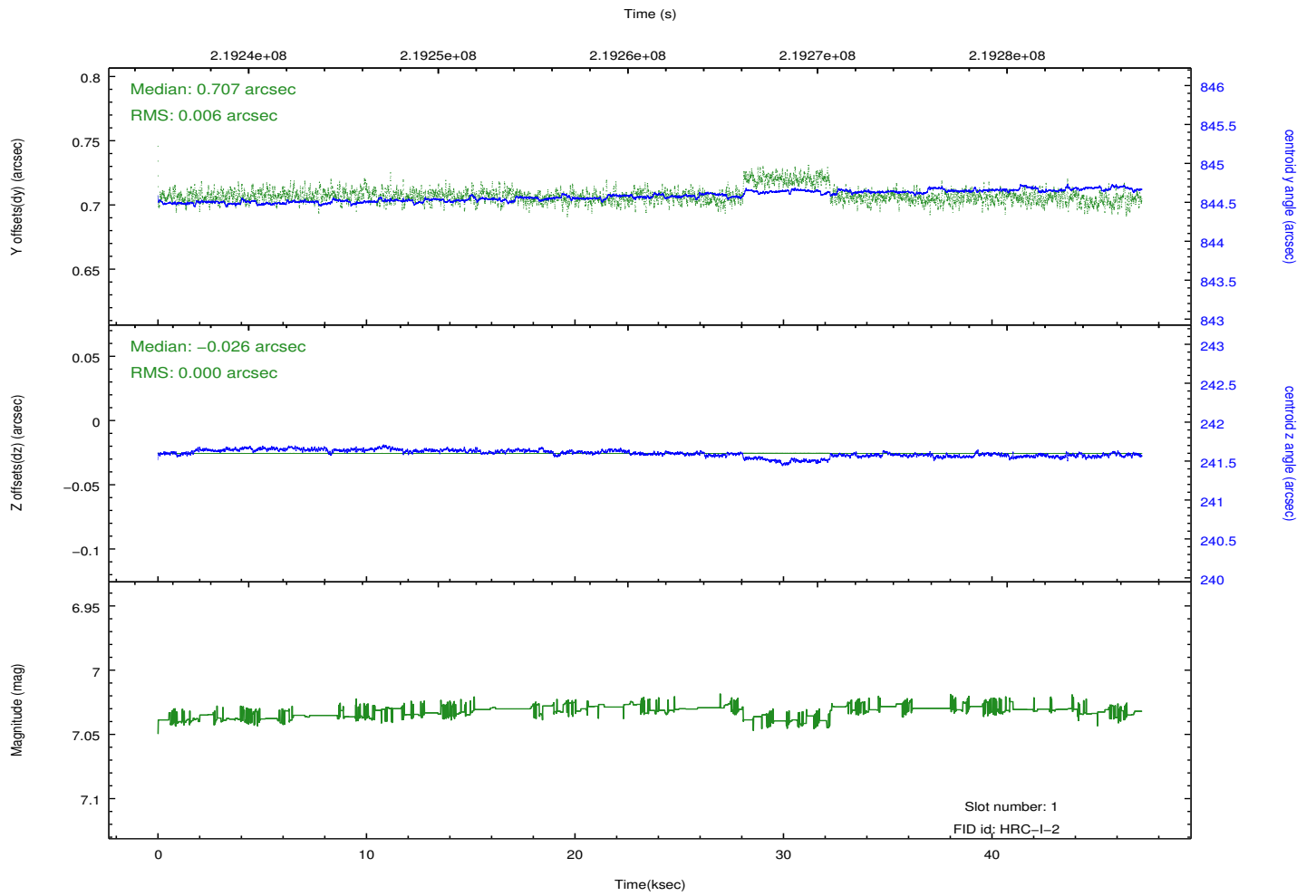
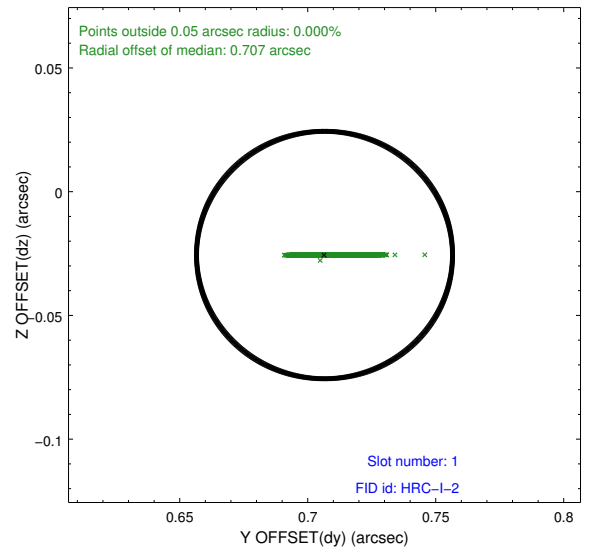
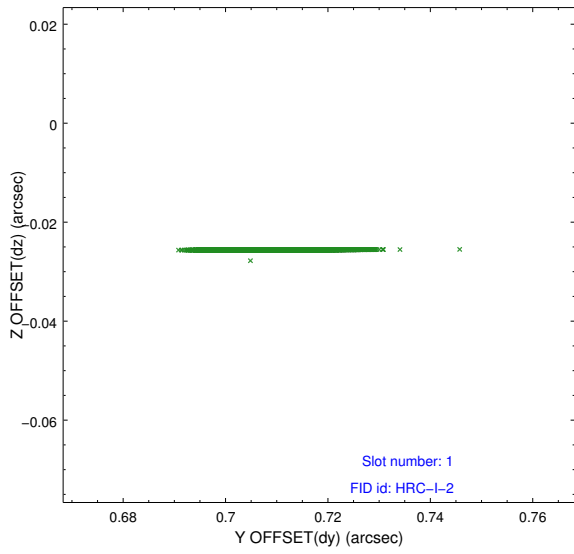


2.5 FID Slots

2.5.1 Slot 0



2.5.2 Slot 1



A Summary

A.1 Status

V&V Scientist	Joy Nichols
V&V Date (YYYY-MM-DD)	2013.01.22
V&V Edition	1
V&V Disposition and Status	OK
V&V Charge Time	47.596

A.2 Comments