

V&V Reference Report

L2 ASCDS Version : 8.4.5

Observation 5295 - L2 Version 3
Chandra X-Ray Center

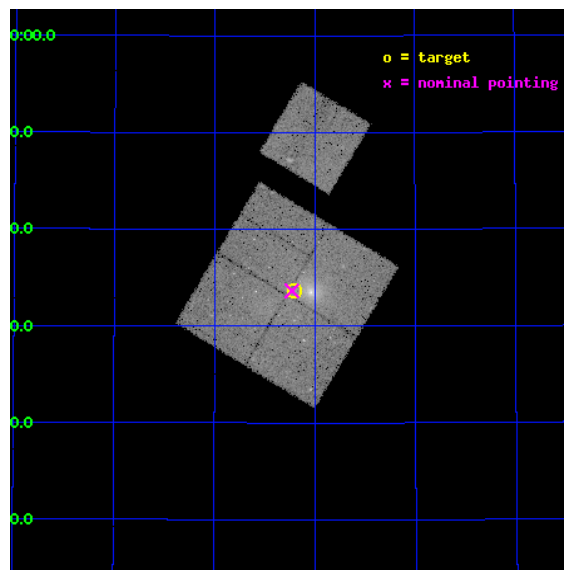
L2 Processing Date : Nov 11 2012

Contents

1	Front	2
2	OBI	3
2.1	OBI	3
2.1.1	Images	3
2.1.2	Bias	3
2.1.3	Parameters	4
2.1.4	Events	4
2.2	Compared Parameters	5
2.3	Aspect	6
2.4	Star Slots	9
2.4.1	Slot 3	9
2.4.2	Slot 4	10
2.4.3	Slot 5	11
2.4.4	Slot 6	12
2.4.5	Slot 7	13
2.5	FID Slots	14
2.5.1	Slot 0	14
2.5.2	Slot 1	15
2.5.3	Slot 2	16
A	Summary	17
A.1	Status	17
A.2	Comments	17

1 Front

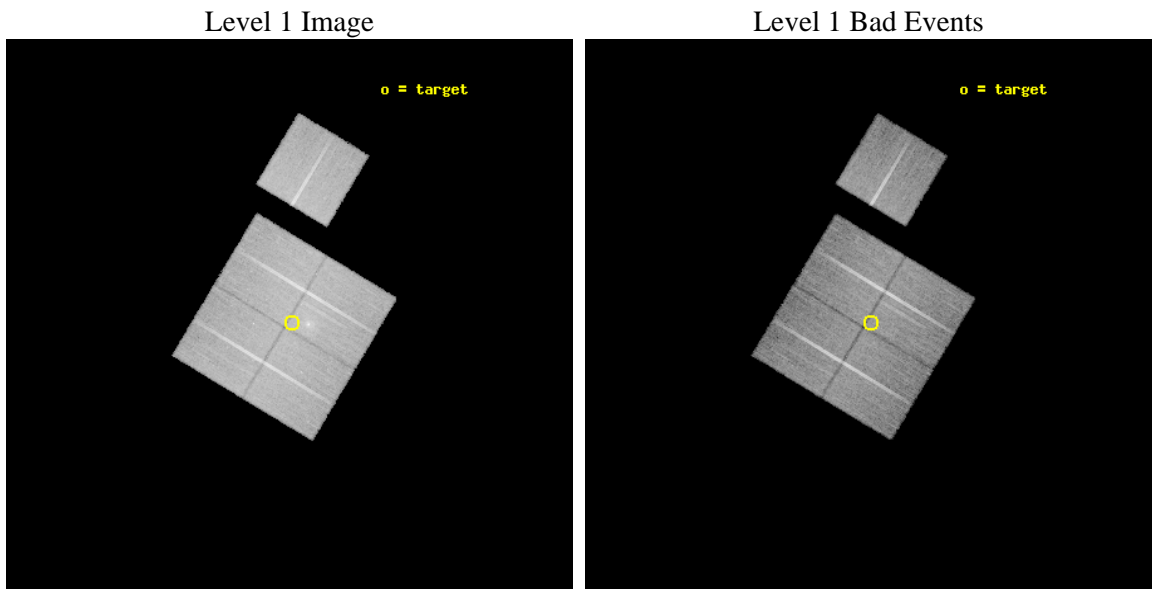
seq_num	700842	Sequence number
obs_id	5295	Observation id
title	Shocks and Bubbles in the ICM: A Chandra Observation of 3C 388	Pro
observer	Dr. Stephen Murray	Principal investigator
object	3C 388	Source name
dtcycle	0	
cycle	P	events from which exps? Prim/Second/Both
ra_targ	281.05064	Observer's specified target RA [deg]
dec_targ	45.560172	Observer's specified target Dec [deg]
ra_nom	281.05722422247	Nominal RA [deg]
dec_nom	45.560831154484	Nominal Dec [deg]
roll_nom	31.034878238071	Nominal Roll [deg]
revision	3	Processing version of data
ontime	31114.658969879	Sum of GTIs [s]
livetime	30708.123044159	Livetime [s]
ontime0	31114.658999801	Sum of GTIs [s]
ontime1	31114.658950001	Sum of GTIs [s]
ontime2	31114.658979923	Sum of GTIs [s]
ontime3	31114.658969879	Sum of GTIs [s]
ontime6	31114.658969879	Sum of GTIs [s]
l2events	115075	Number of level 2 events



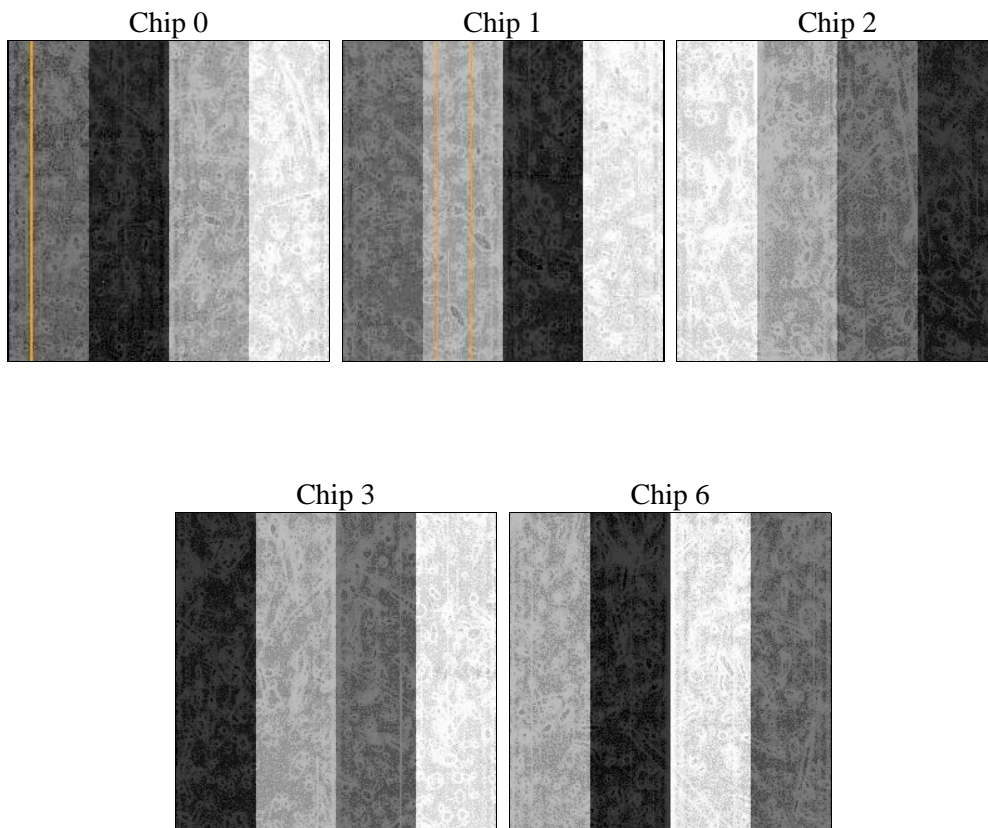
2 OBI

2.1 OBI

2.1.1 Images



2.1.2 Bias



2.1.3 Parameters

obi_num	0	Obi number	sched_exp_time	31000.000000	[s] Scheduled observation exposure time
ascdsver	8.4.5	Processing system revision	ontime	31114.658969879	Sum of GTIs [s]
caldbver	4.5.2	 	ontime0	31114.658999801	Sum of GTIs [s]
date	2012-11-11T14:36:38	Date and time of file creation	ontime1	31114.658950001	Sum of GTIs [s]
revision	3	Processing version of data	ontime2	31114.658979923	Sum of GTIs [s]
			ontime3	31114.658969879	Sum of GTIs [s]
			ontime6	31114.658969879	Sum of GTIs [s]
			l1events	920074	Number of level 1 events

2.1.4 Events

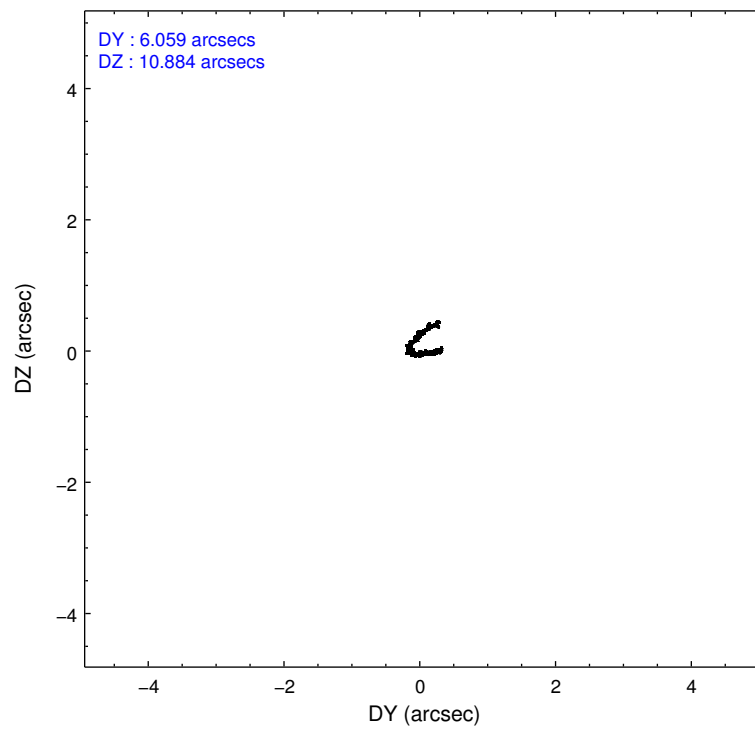
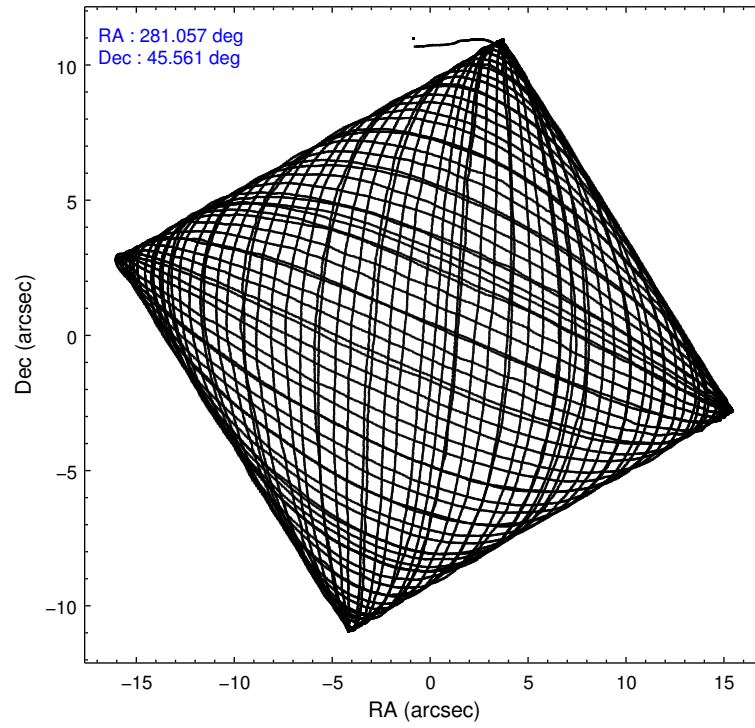
	ccd 0	ccd 1	ccd 2	ccd 3	ccd 6
level 1 events	172248	178840	187833	195888	185265
rejected events	146668	152687	163757	163321	162452
rejected %	85%	85%	87%	83%	87%

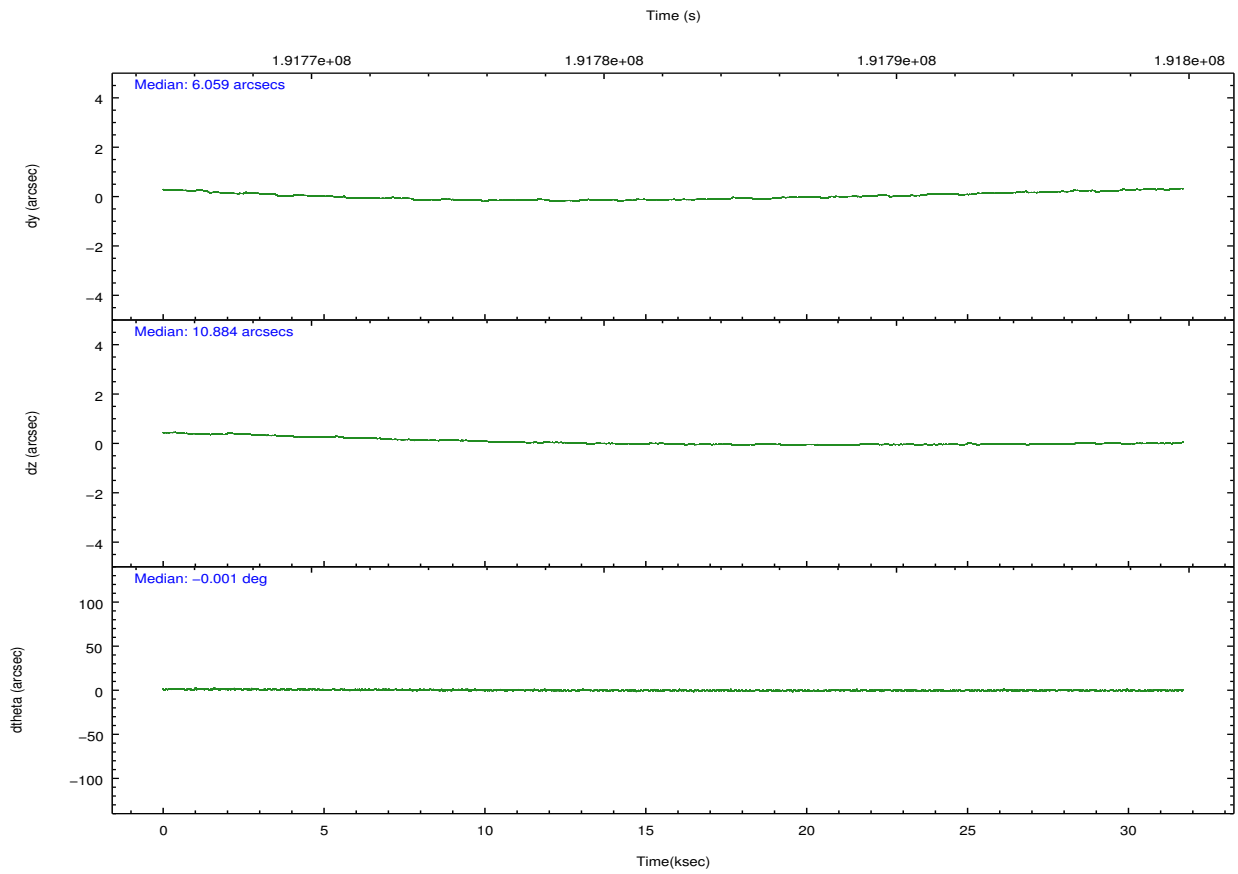
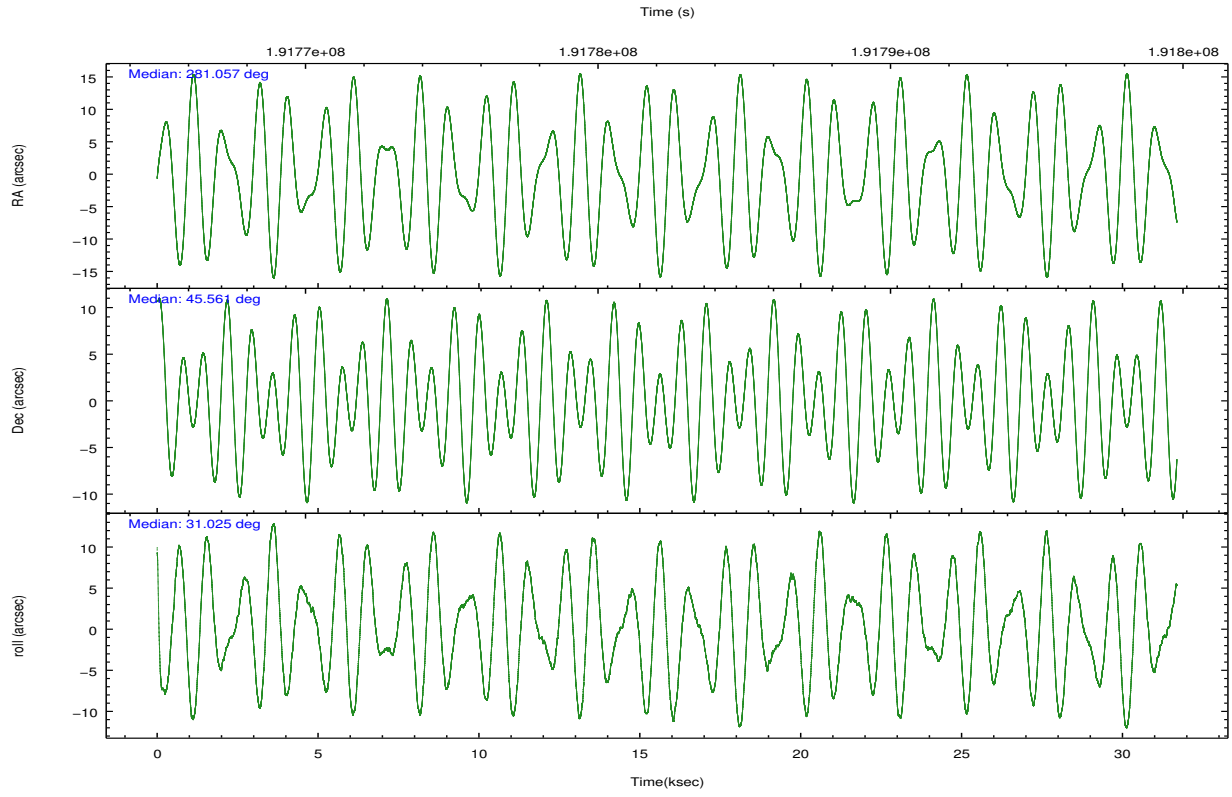
	ccd 0	ccd 1	ccd 2	ccd 3	ccd 6
grade 0 events	11641	11184	11342	18331	9153
	6%	6%	6%	9%	4%
grade 1 events	132	86	117	153	93
	0%	0%	0%	0%	0%
grade 2 events	5149	5339	4786	5242	4561
	2%	2%	2%	2%	2%
grade 3 events	2434	2492	2158	2502	2225
	1%	1%	1%	1%	1%
grade 4 events	2202	2407	2140	2412	2261
	1%	1%	1%	1%	1%
grade 5 events	7734	8125	7533	8646	8596
	4%	4%	4%	4%	4%
grade 6 events	4161	4736	3656	4089	4615
	2%	2%	1%	2%	2%
grade 7 events	138795	144471	156101	154513	153761
	80%	80%	83%	78%	82%

2.2 Compared Parameters

Parameter	Planned	Actual	Parameter	Planned	Actual
Instrument	ACIS	ACIS	Obspar format version number	7	7
Detector	ACIS-01236	ACIS-01236	Obspar file type	PREDICTED	ACTUAL
Grating	NONE	NONE	Obspar update status	NONE	UPDATED
Data mode	VFAINT	VFAINT	Number of optional ACIS chips dropped	0	0
Observation mode	POINTING	POINTING	On-chip summing requested	N	N
[deg] Pointing RA	281.038407	281.0572242224675	Subarray requested	NONE	NONE
[deg] Pointing Dec	45.536821	45.5608311544843	Alternating exposures requested	N	N
[deg] Pointing Roll	30.839625	31.03487823807077	[s] Primary exposure time	0.000000	3.1
[mm] SIM focus pos	-0.782348	-0.7809083437167272			
[mm] SIM defocus	0	0.001439871863259334			
[mm] SIM translation stage pos	-233.592463	-233.5874344608287			
[mm] SIM translation stage offset	0	-0.005018542100998502			
[s] Observation start time (MET)	191767204.184000	191765989.84282			
Observation start date	2004-01-29T12:39:00	2004-01-29T12:19:49			
[s] Observation end time (MET)	191798204.184000	191799716.9568			
Observation end date	2004-01-29T21:15:40	2004-01-29T21:41:56			
Read mode	TIMED	TIMED			

2.3 Aspect



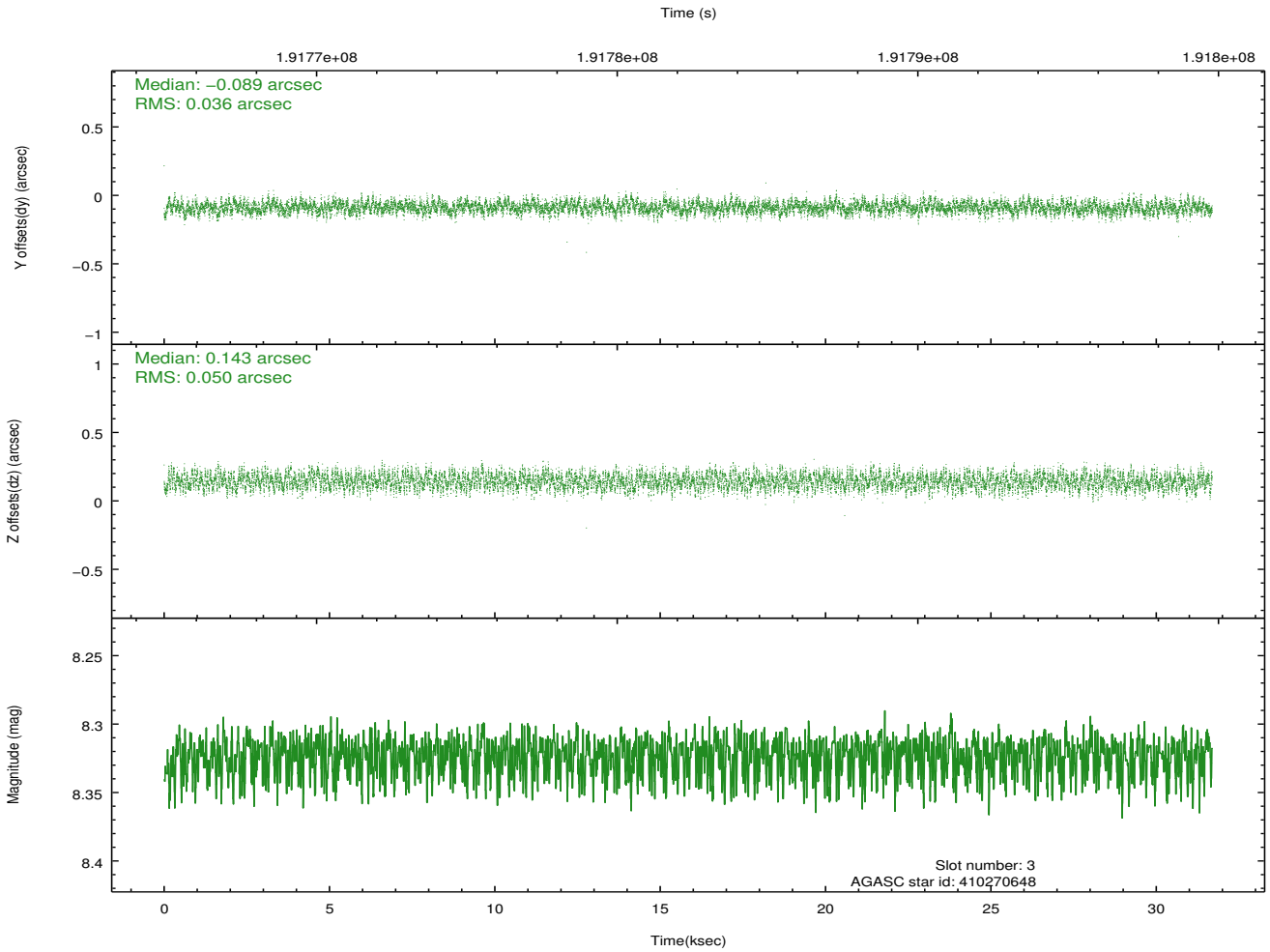
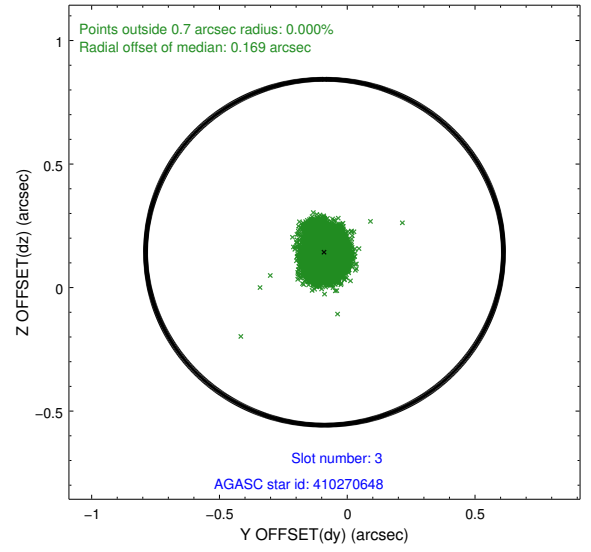
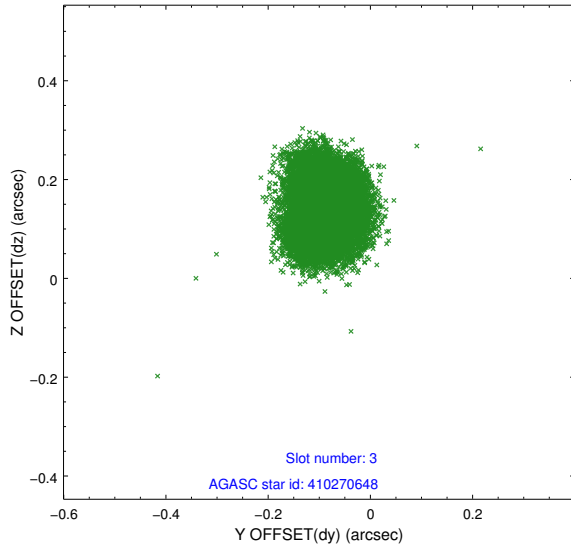


Slot Statistics

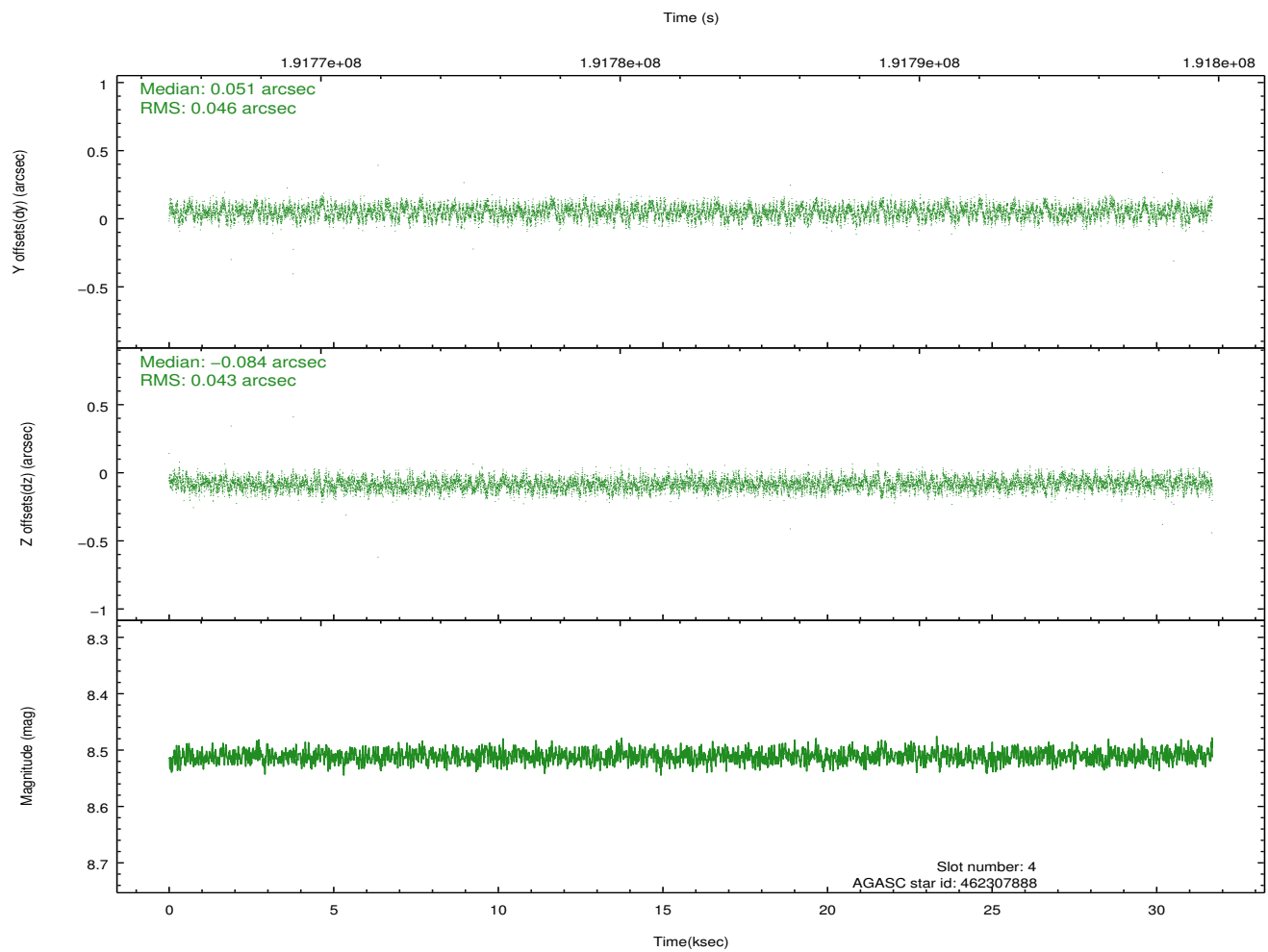
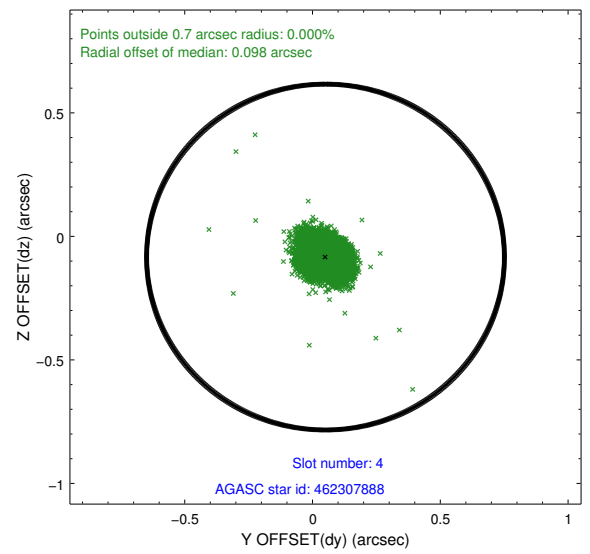
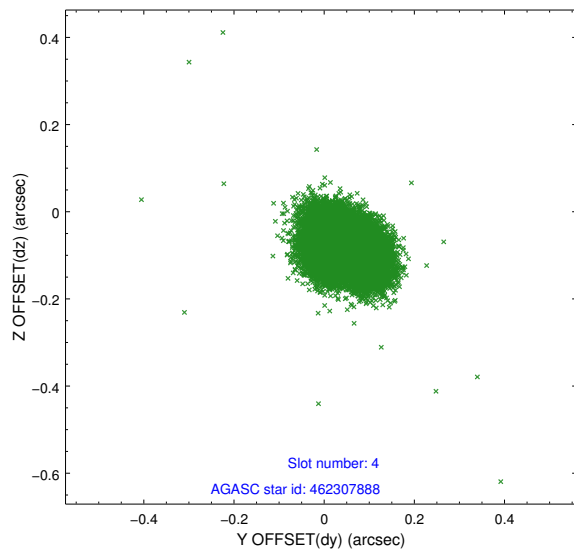
slot	status	id	mag	n_pts	med_dy	med_dz	dr1	dr2	ra	dec	mean_y	mean_z
0	FID	ACIS-I-1	7.24	7730	0.029	-0.011	0.008	0.014	0.000000	0.000000	933.64	-834.48
1	FID	ACIS-I-5	7.23	7730	-0.152	0.049	0.007	0.012	0.000000	0.000000	-1814.58	1063.09
2	FID	ACIS-I-6	7.25	7729	0.031	0.033	0.007	0.012	0.000000	0.000000	399.17	1707.61
3	GUIDE	410270648	8.32	15460	-0.089	0.143	0.066	0.105	281.097411	44.889988	-1063.94	-2076.24
4	GUIDE	462307888	8.51	15456	0.051	-0.084	0.068	0.105	280.411703	45.917665	-641.85	1986.99
5	GUIDE	464017248	8.33	15457	0.054	-0.013	0.079	0.137	282.279643	45.321328	2312.98	-2255.23
6	GUIDE	464018424	7.26	15460	0.012	0.050	0.082	0.127	282.151184	45.261757	1924.42	-2278.24
7	GUIDE	462305872	9.14	15451	-0.038	-0.092	0.108	0.189	280.002199	45.867625	-1611.27	2368.25

2.4 Star Slots

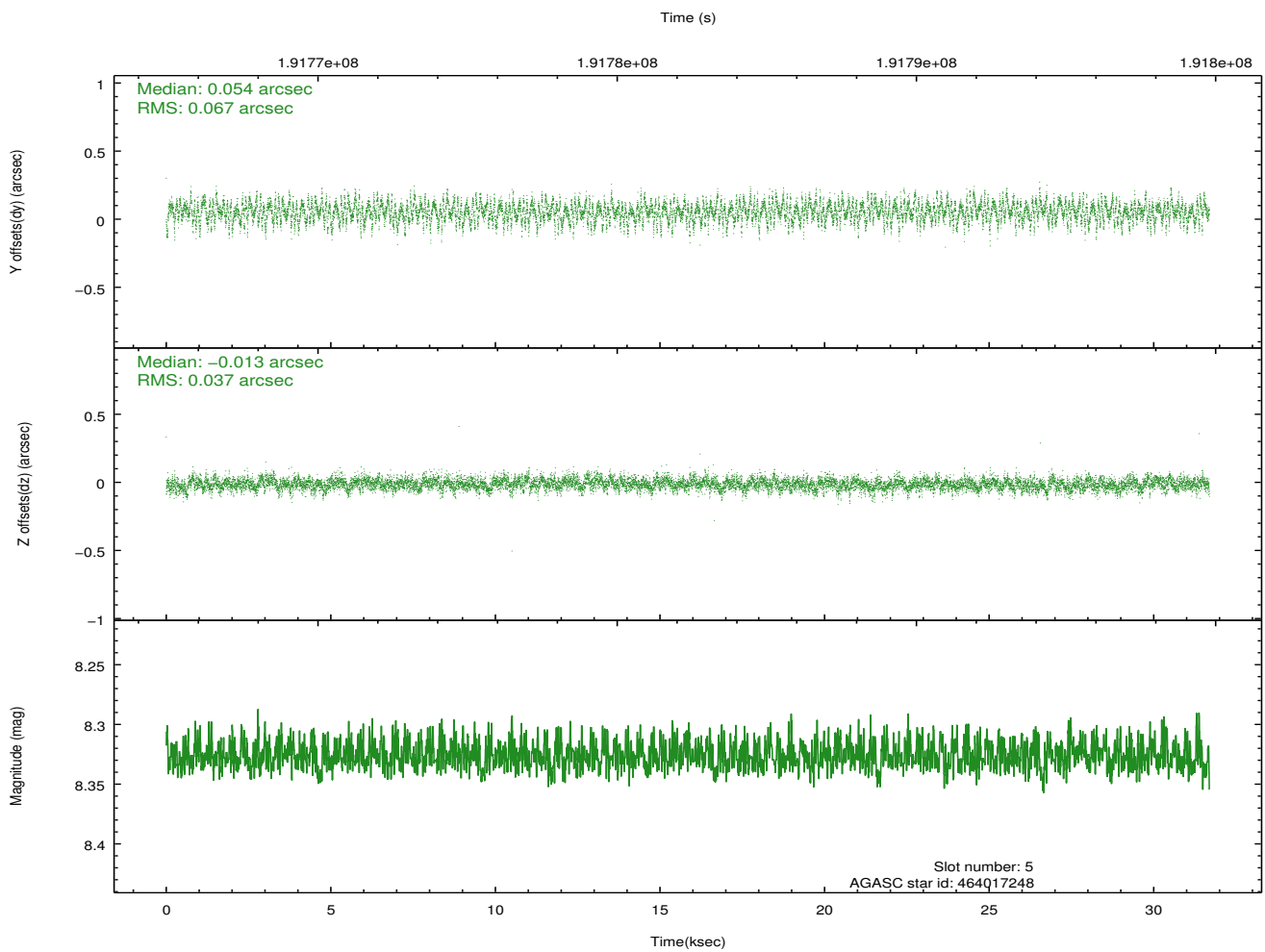
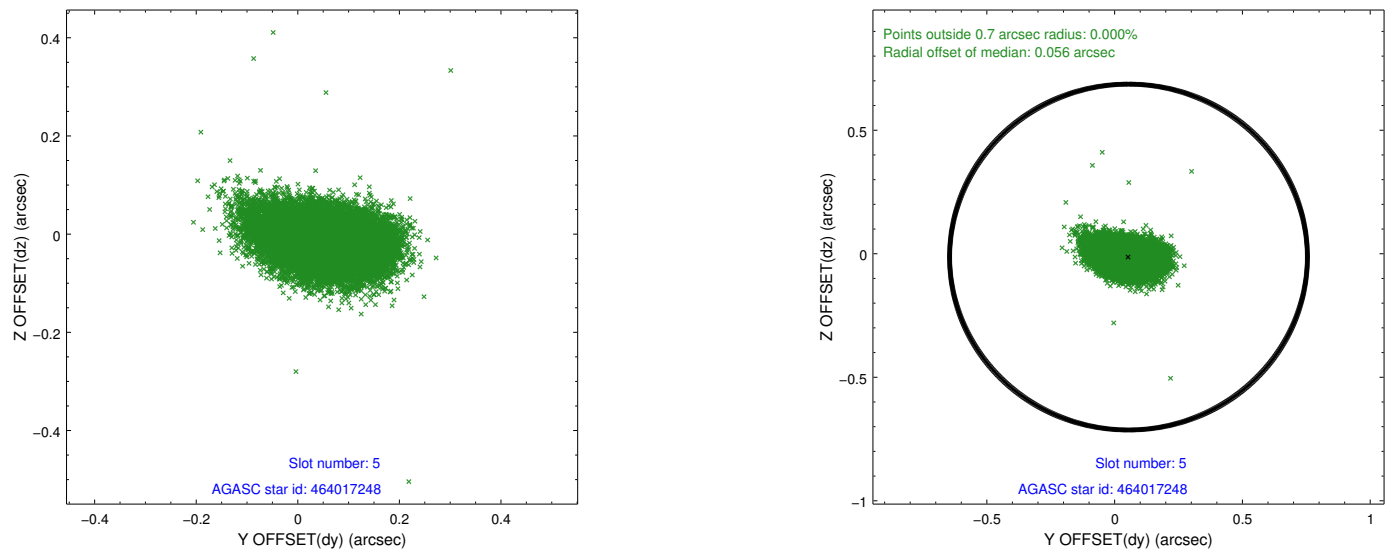
2.4.1 Slot 3



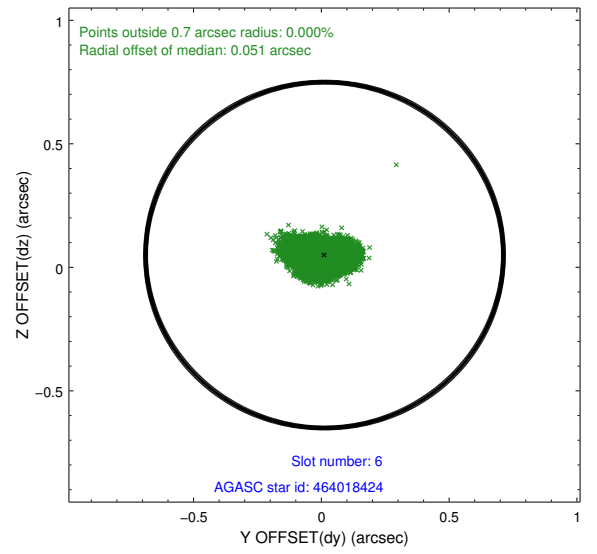
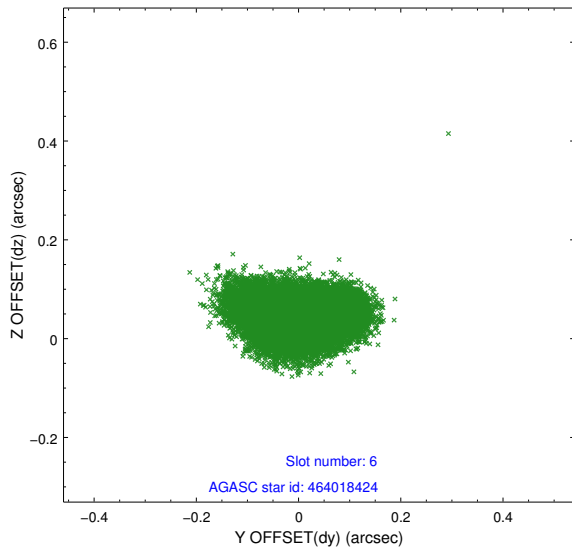
2.4.2 Slot 4



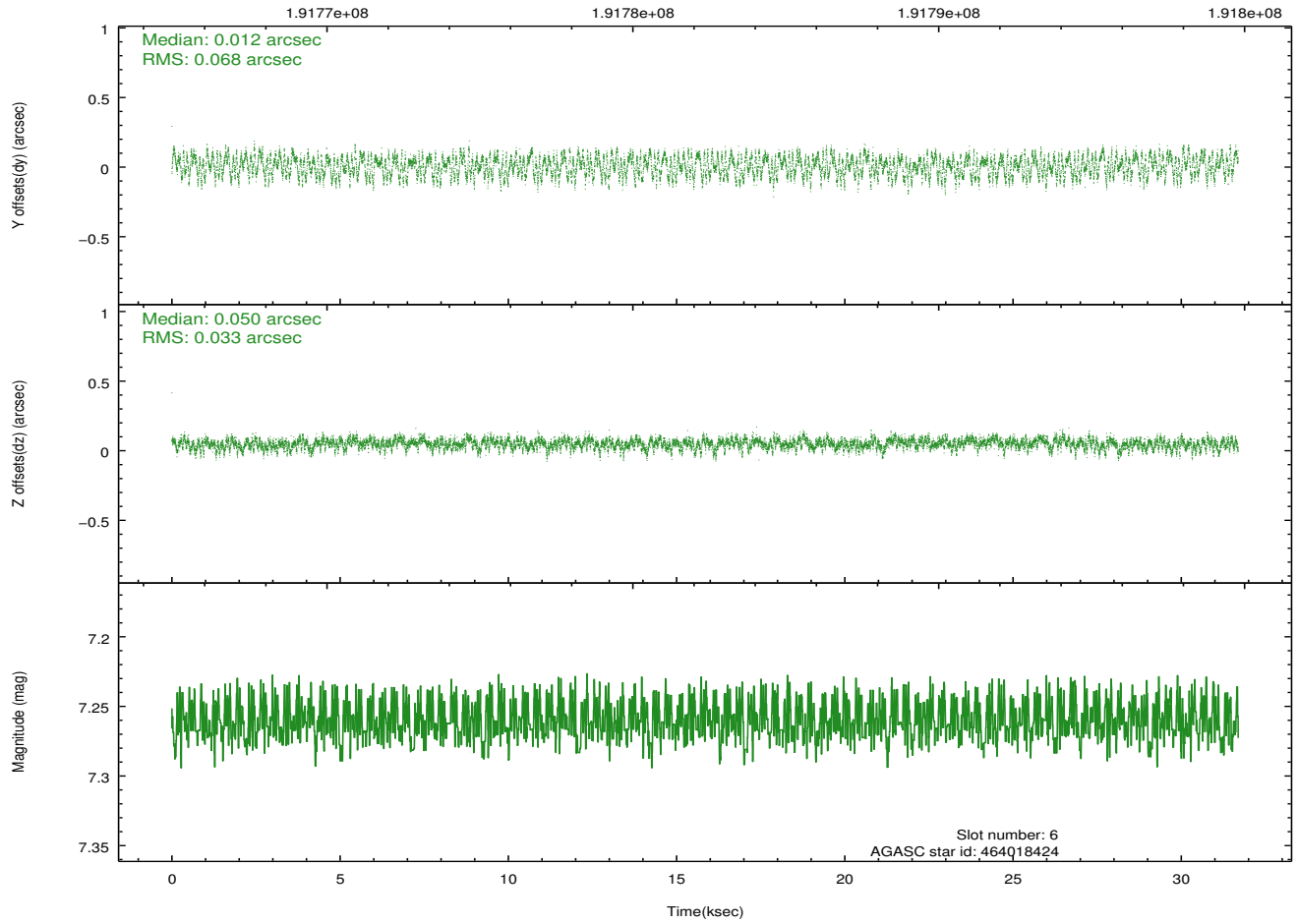
2.4.3 Slot 5



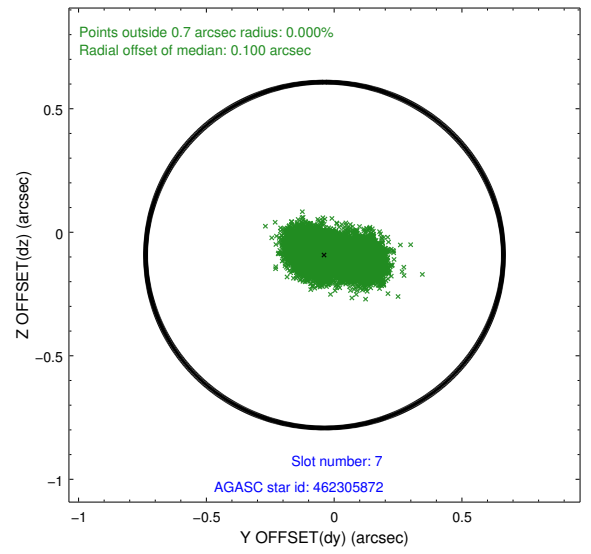
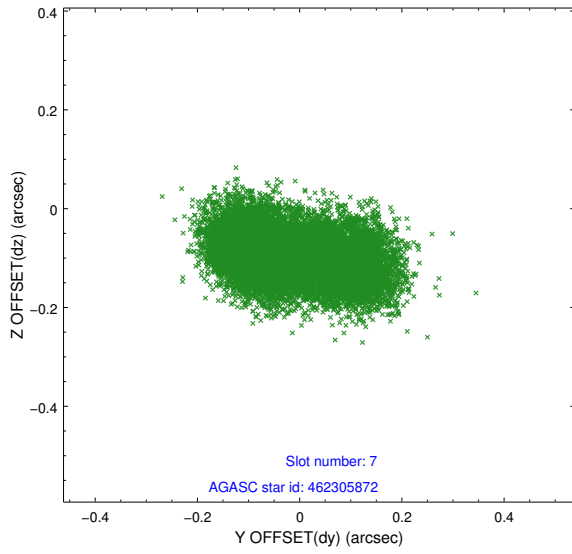
2.4.4 Slot 6



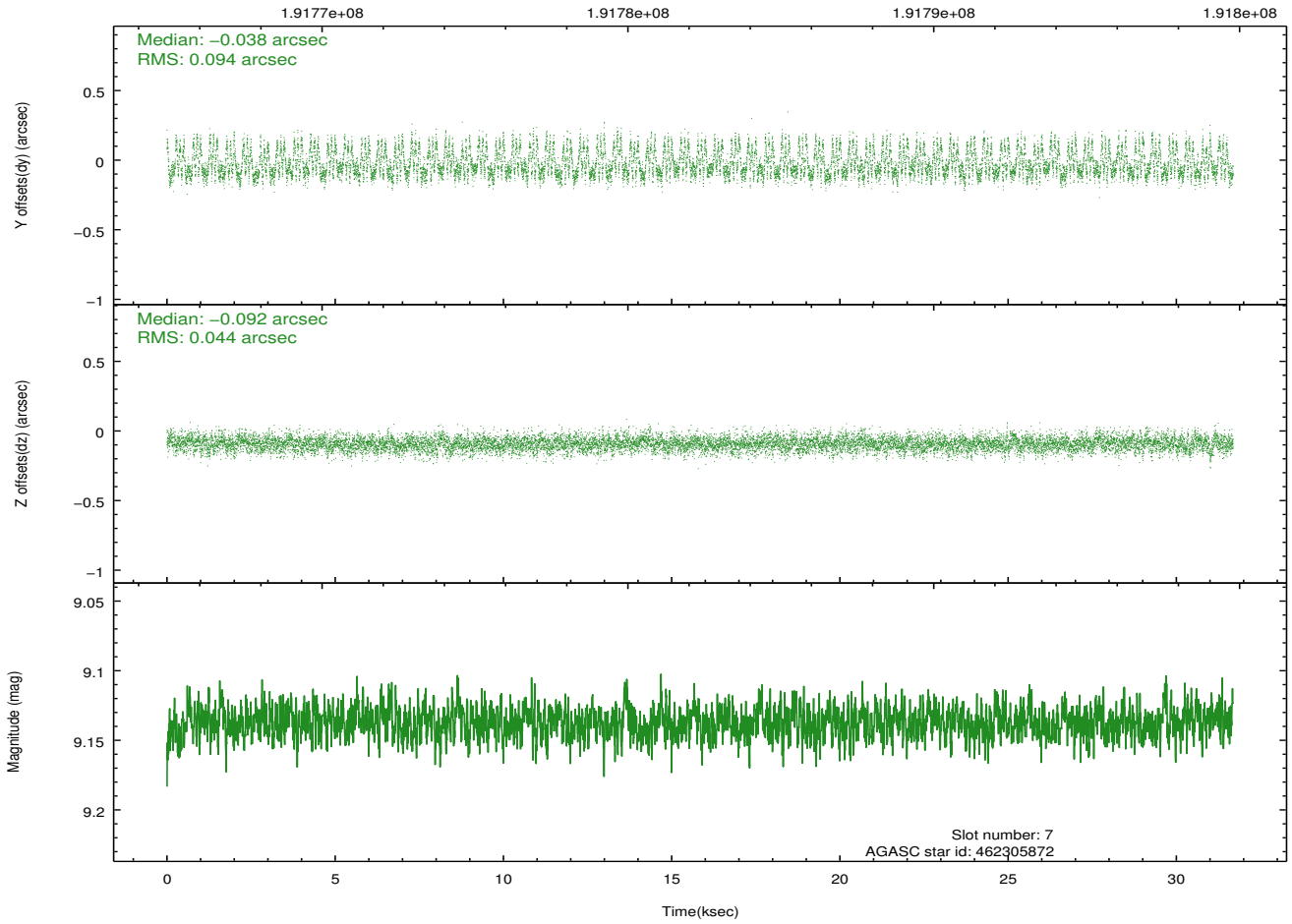
Time (s)



2.4.5 Slot 7

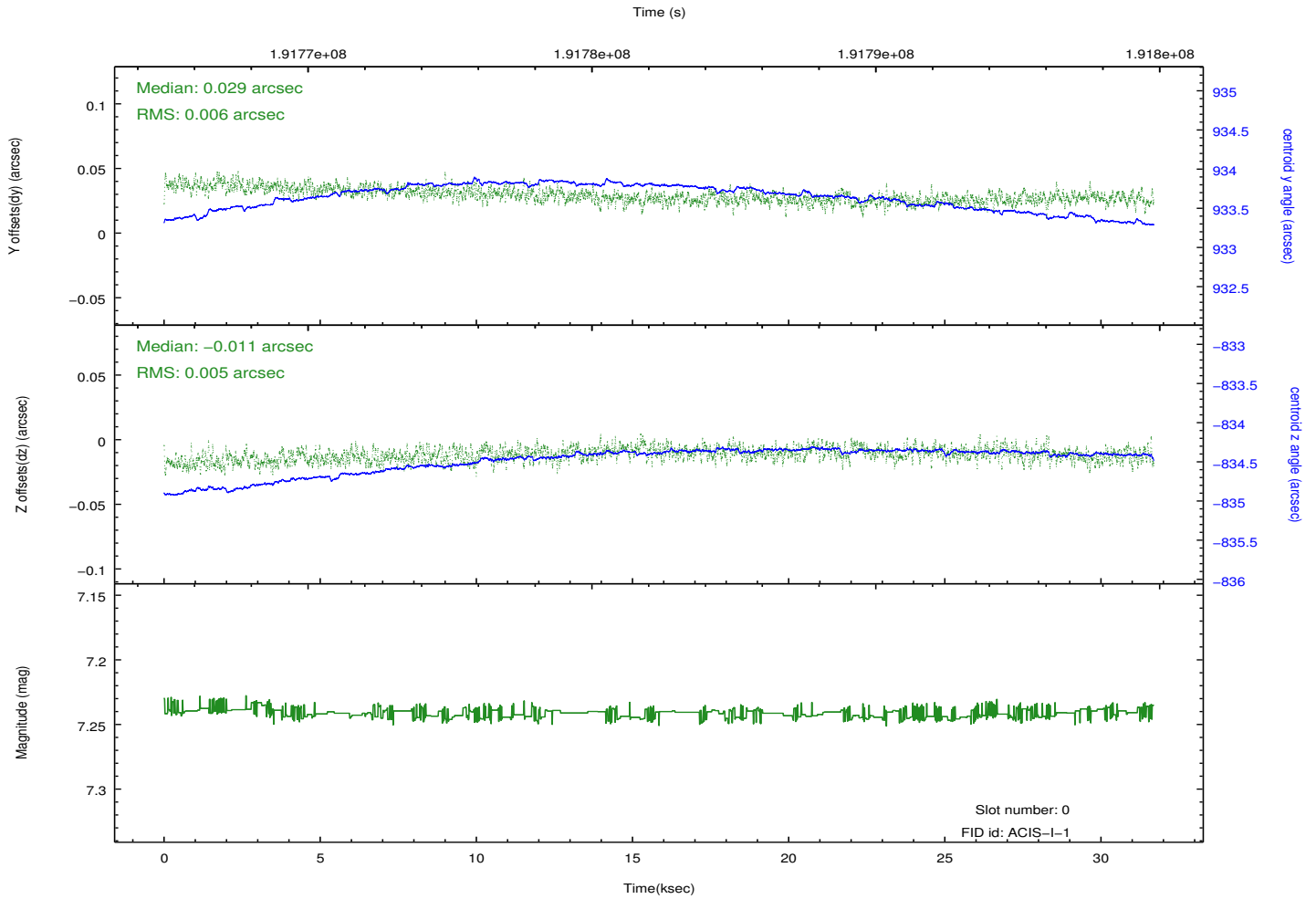
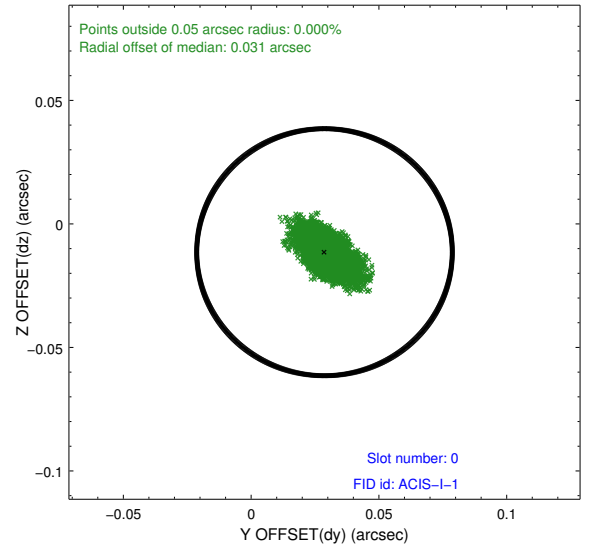
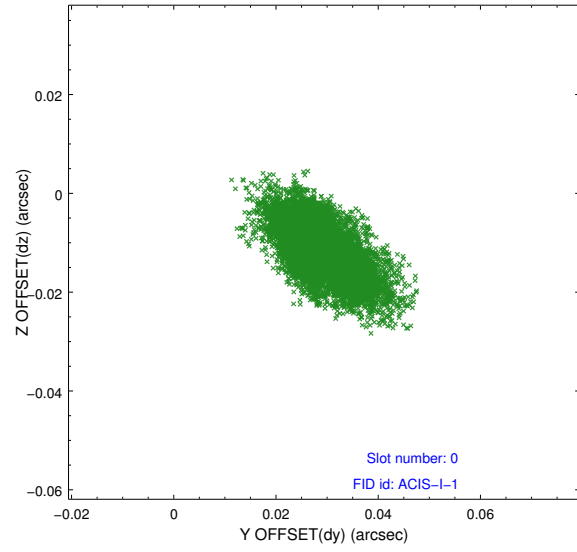


Time (s)

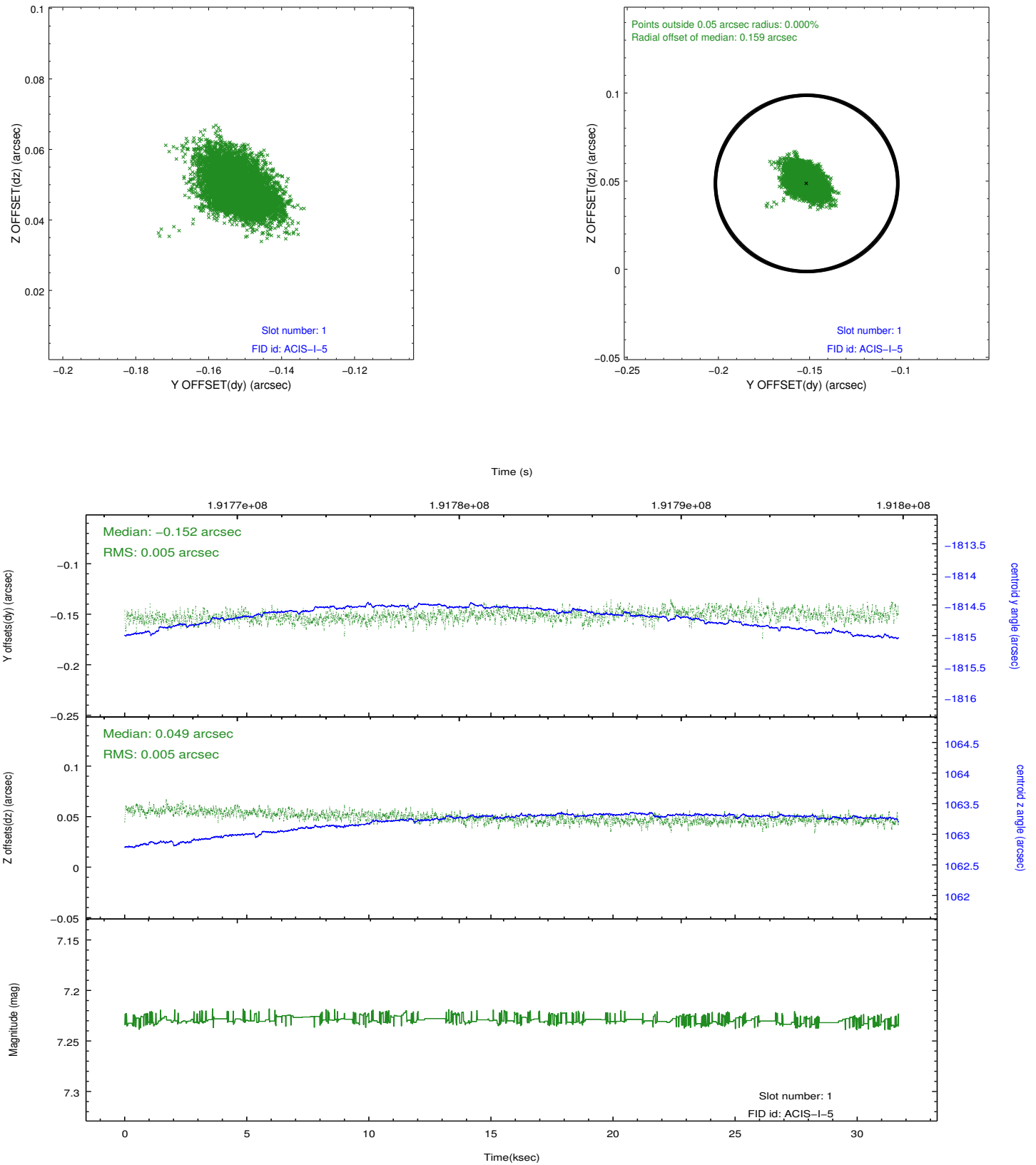


2.5 FID Slots

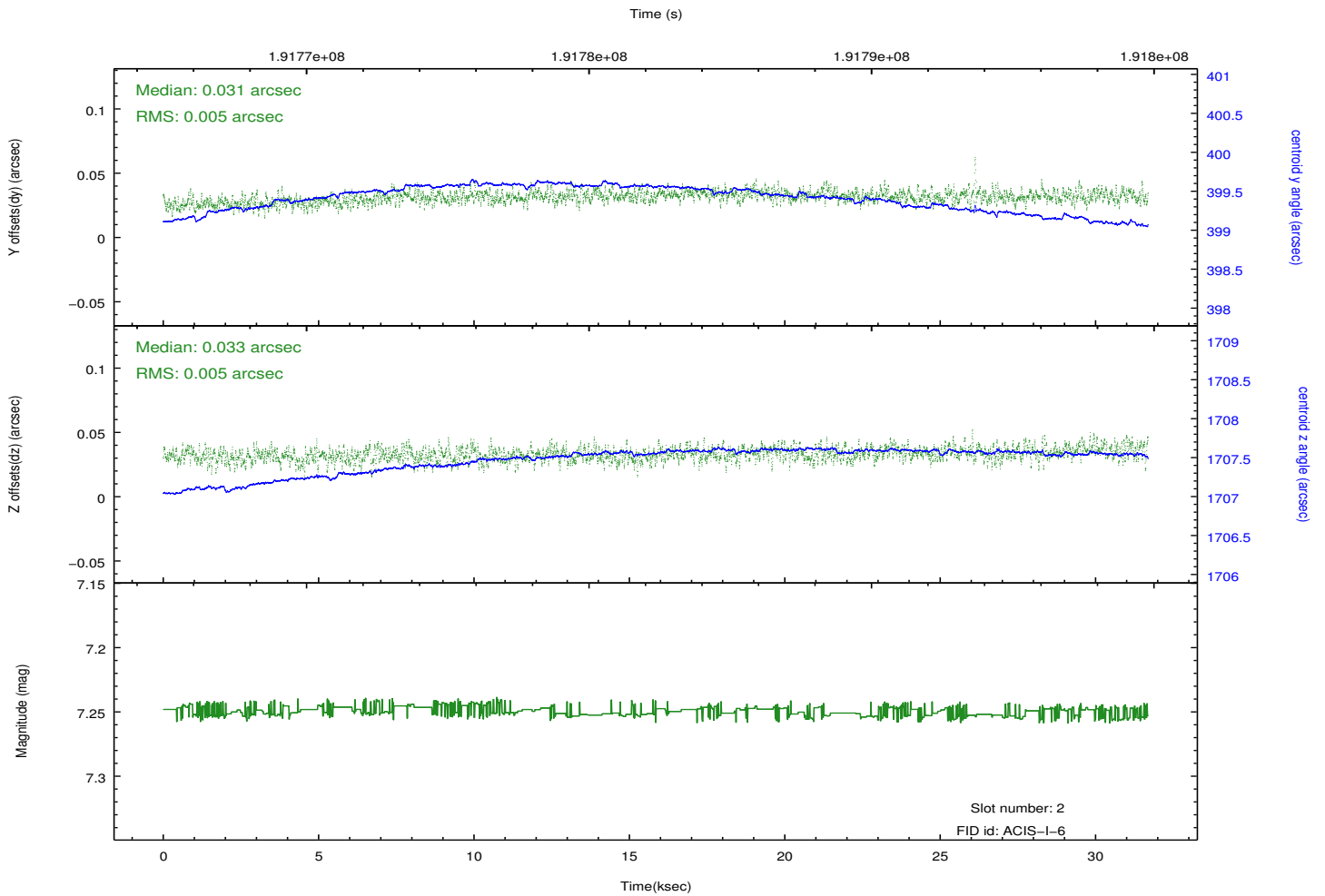
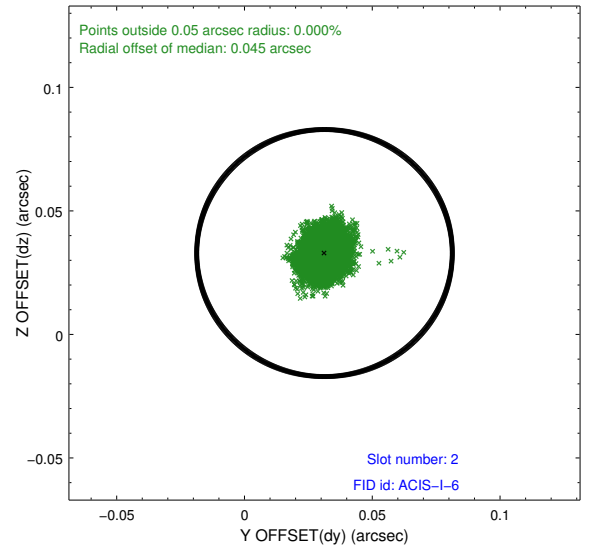
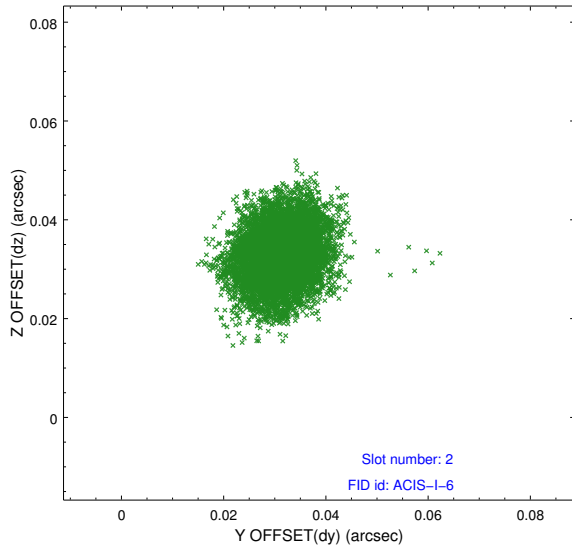
2.5.1 Slot 0



2.5.2 Slot 1



2.5.3 Slot 2



A Summary

A.1 Status

V&V Scientist	Jen Lauer
V&V Date (YYYY-MM-DD)	2012.12.11
V&V Edition	1
V&V Disposition and Status	OK
V&V Charge Time	31.117

A.2 Comments