

V&V Reference Report

L2 ASCDS Version : 8.5.1.1

Observation 5515 - L2 Version 4
Chandra X-Ray Center

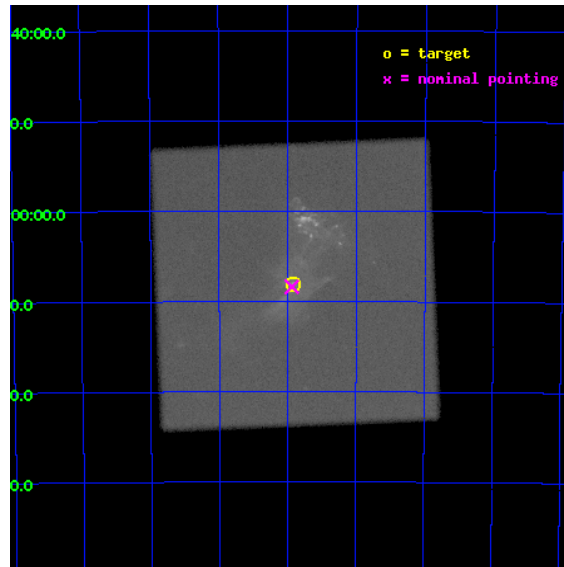
L2 Processing Date : Dec 24 2012

Contents

1	Front	2
2	OBI	3
2.1	OBI	3
2.1.1	Images	3
2.1.2	Parameters	4
2.1.3	Events	4
2.2	Compared Parameters	5
2.3	Aspect	6
2.4	Star Slots	9
2.4.1	Slot 3	9
2.4.2	Slot 4	10
2.4.3	Slot 5	11
2.4.4	Slot 6	12
2.4.5	Slot 7	13
2.5	FID Slots	14
2.5.1	Slot 0	14
2.5.2	Slot 1	15
2.5.3	Slot 2	16
A	Summary	17
A.1	Status	17
A.2	Comments	17

1 Front

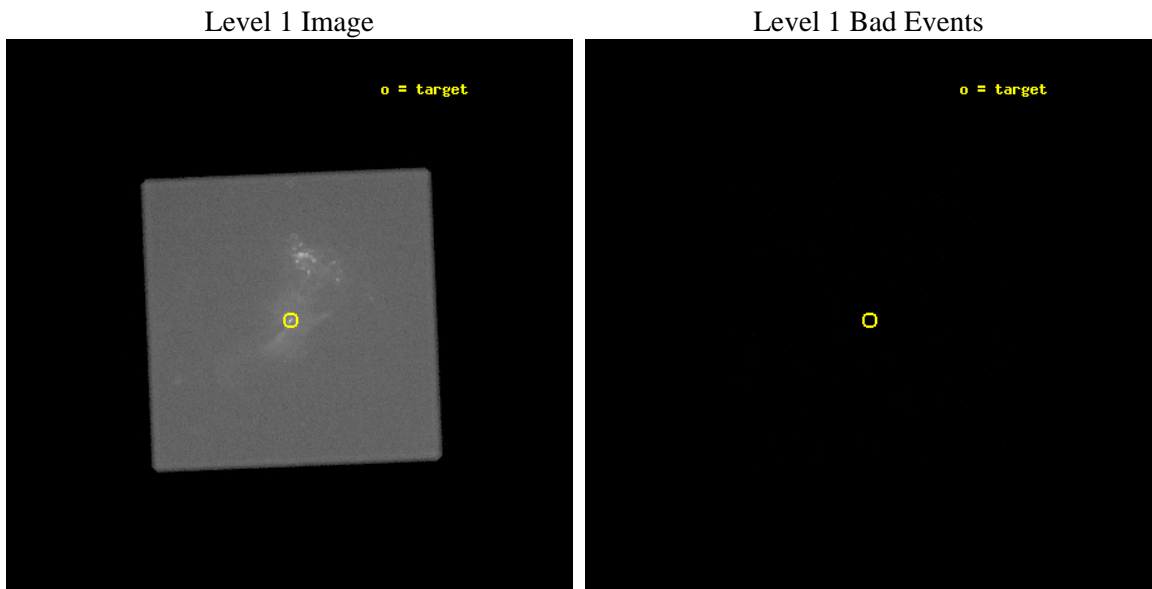
seq_num	500509	Sequence number
obs_id	5515	Observation id
title	The Surface Temperature of Isolated Neutron Stars	Proposal title
observer	Dr. Stephen Murray	Principal investigator
object	PSR B1509-58	Source name
ra_targ	228.481667	Observer's specified target RA [deg]
dec_targ	-59.135833	Observer's specified target Dec [deg]
ra_nom	228.48441402489	Nominal RA [deg]
dec_nom	-59.139722625191	Nominal Dec [deg]
roll_nom	312.68242825955	Nominal Roll [deg]
revision	4	Processing version of data
ontime	45187.383312106	[s]
livetime	44862.701533851	Ontime multiplied by DTCOR
l2events	1855091	Number of level 2 events



2 OBI

2.1 OBI

2.1.1 Images



2.1.2 Parameters

obi_num	0	Obi number	sched_exp_time	45000.000000	[s] Scheduled observation exposure time
ascdsver	8.5.1.1	Processing system revision	ontime	45187.383312106	[s]
caldbver	4.5.5	 	l1events	2738894	Number of level 1 events
date	2012-12-24T15:24:45	Date and time of file creation			
revision	4	Processing version of data			

2.1.3 Events

Level 1 Events

	segment 0
level 1 events	2738894
rejected events	46297
rejected %	1%

2.2 Compared Parameters

Parameter	Planned	Actual	Parameter	Planned	Actual
Instrument	HRC	HRC	Obspar format version number	7	7
Detector	HRC-I	HRC-I	Obspar file type	PREDICTED	ACTUAL
Grating	NONE	NONE	Obspar update status	NONE	UPDATED
Data mode	OBSERVING	OBSERVING			
Observation mode	POINTING	POINTING			
[deg] Pointing RA	228.433665	228.4844140248942			
[deg] Pointing Dec	-59.132272	-59.13972262519085			
[deg] Pointing Roll	312.734348	312.6824282595464			
[mm] SIM focus pos	-1.040293	-1.038866356238299			
[mm] SIM defocus	0	0.001426264420575141			
[mm] SIM translation stage pos	126.985494	126.9829799899862			
[mm] SIM translation stage offset	0	0.002508901615314585			
[s] Observation start time (MET)	235009755.184000	235008797.86347			
Observation start date	2005-06-13T00:28:11	2005-06-13T00:13:17			
[s] Observation end time (MET)	235054755.184000	235055443.5656			
Observation end date	2005-06-13T12:58:11	2005-06-13T13:10:43			

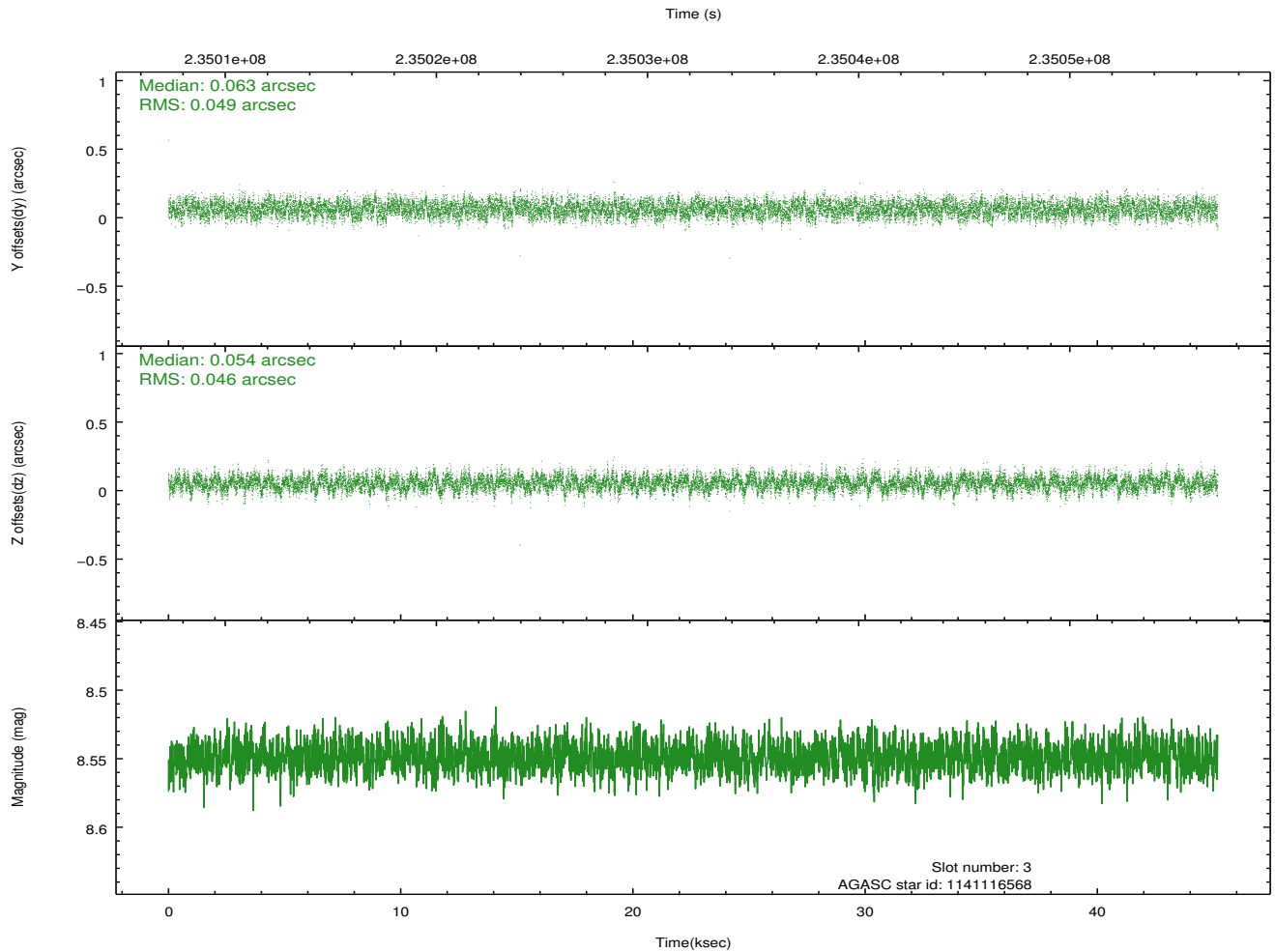
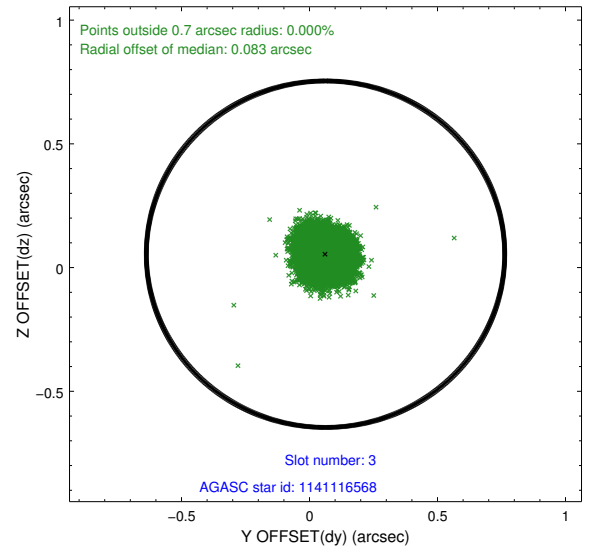
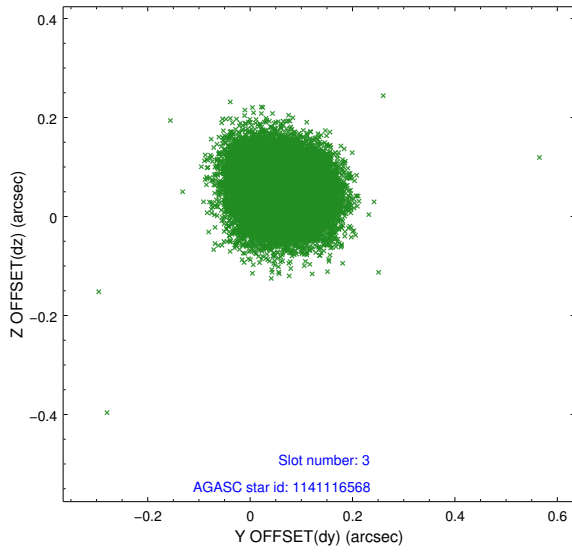
2.3 Aspect

Slot Statistics

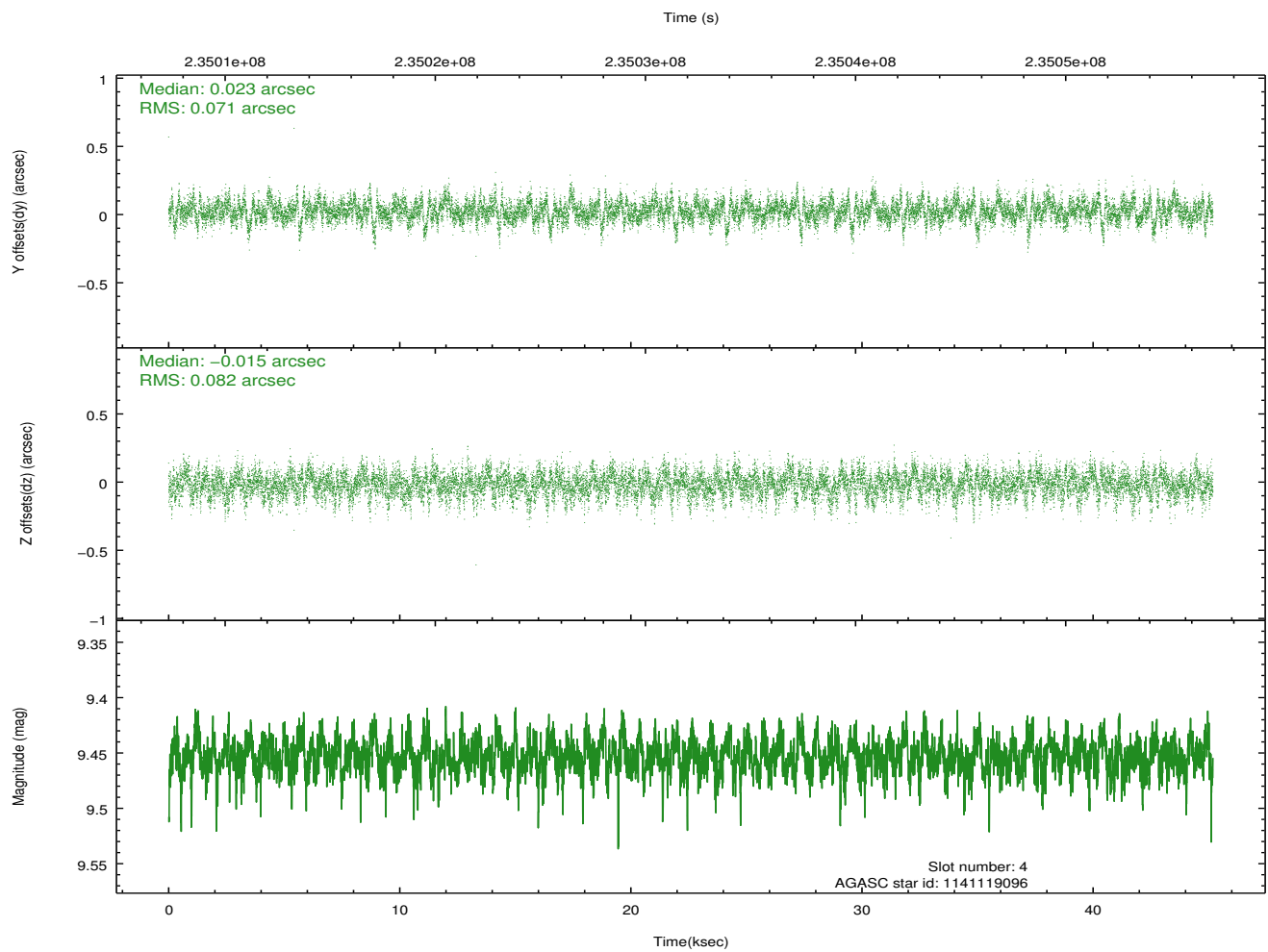
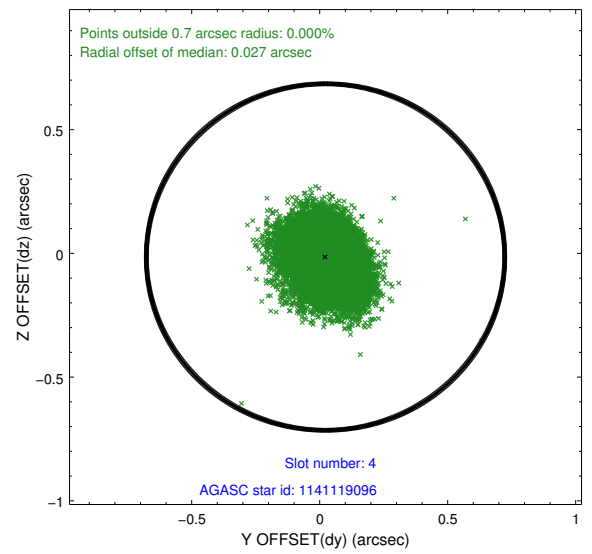
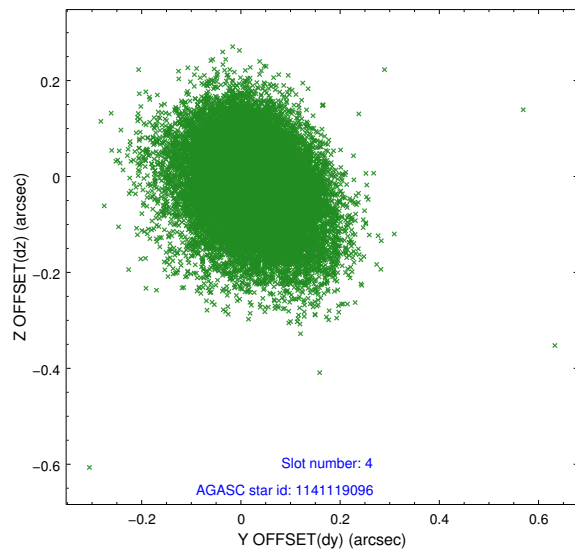
slot	status	id	mag	n_pts	med_dy	med_dz	dr1	dr2	ra	dec	mean_y	mean_z
0	FID	HRC-I-1	6.97	11021	0.053	0.040	0.010	0.018	0.000000	0.000000	-763.83	-1295.90
1	FID	HRC-I-3	7.06	11022	-0.051	-0.072	0.011	0.019	0.000000	0.000000	-1192.38	1008.46
2	FID	HRC-I-4	7.00	11022	0.112	-0.057	0.007	0.012	0.000000	0.000000	1279.02	1006.17
3	GUIDE	1141116568	8.55	22037	0.063	0.054	0.072	0.113	228.578452	-58.520066	-1433.58	1695.35
4	GUIDE	1141119096	9.45	22023	0.023	-0.015	0.113	0.192	228.052751	-59.529718	581.26	-1483.06
5	GUIDE	1141119896	8.40	22041	-0.097	0.052	0.064	0.104	229.637327	-59.405643	2234.38	938.91
6	GUIDE	1141120488	8.76	22034	0.056	-0.060	0.071	0.116	228.236450	-59.504731	741.59	-1174.68
7	GUIDE	1141121072	9.07	22033	-0.044	-0.028	0.095	0.163	227.898628	-59.420815	101.56	-1427.54

2.4 Star Slots

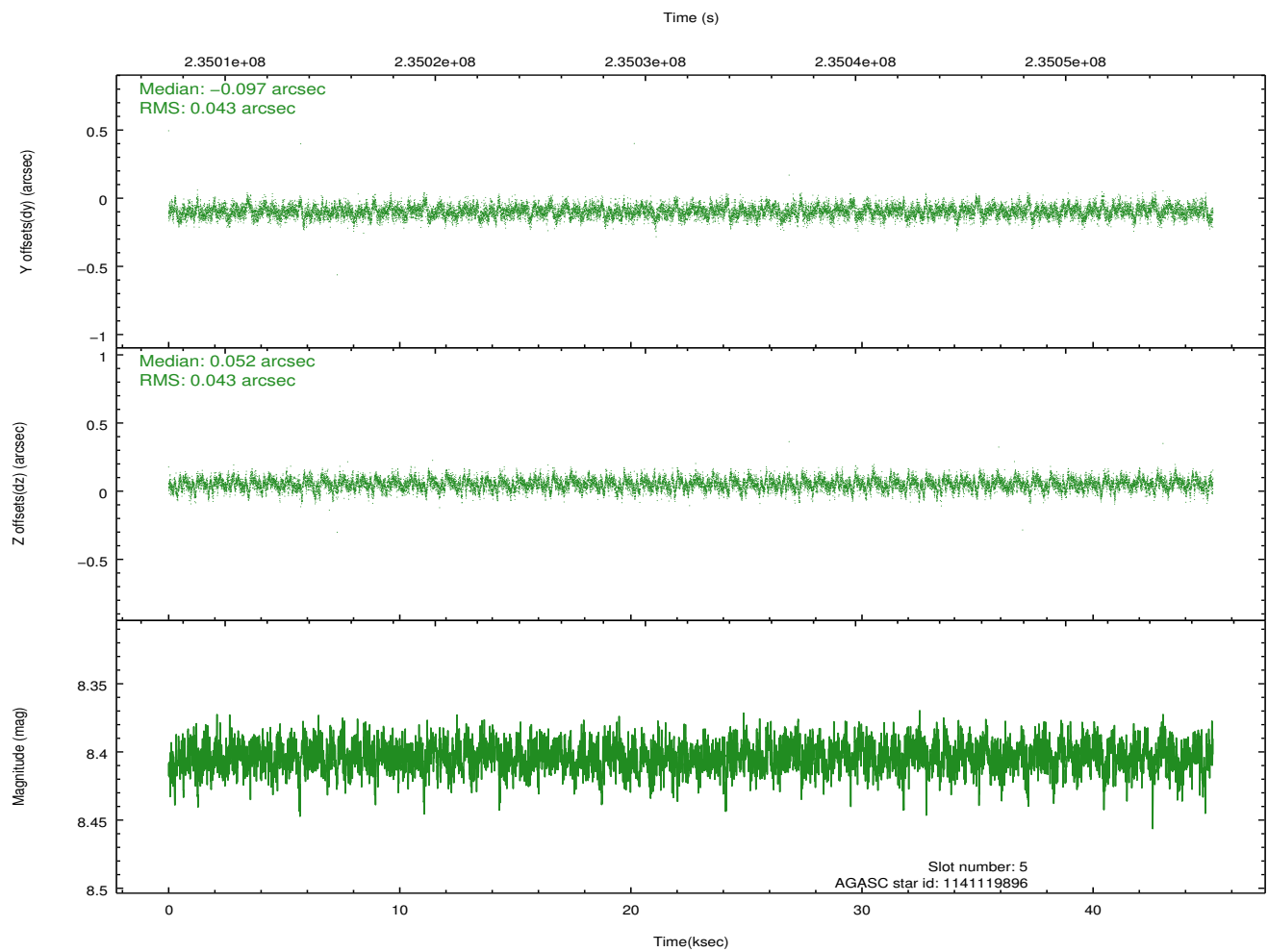
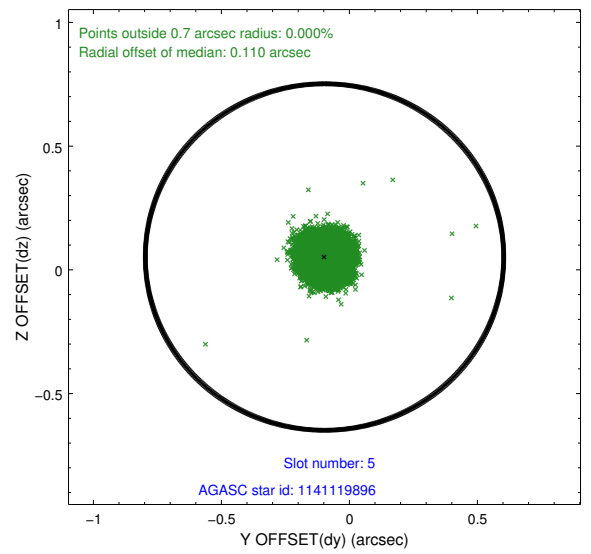
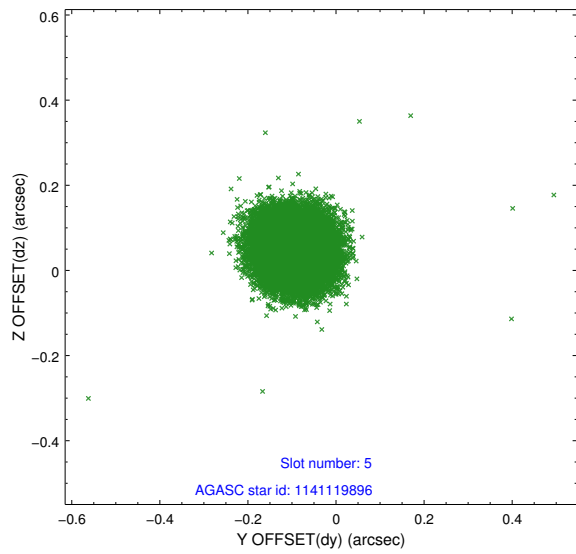
2.4.1 Slot 3



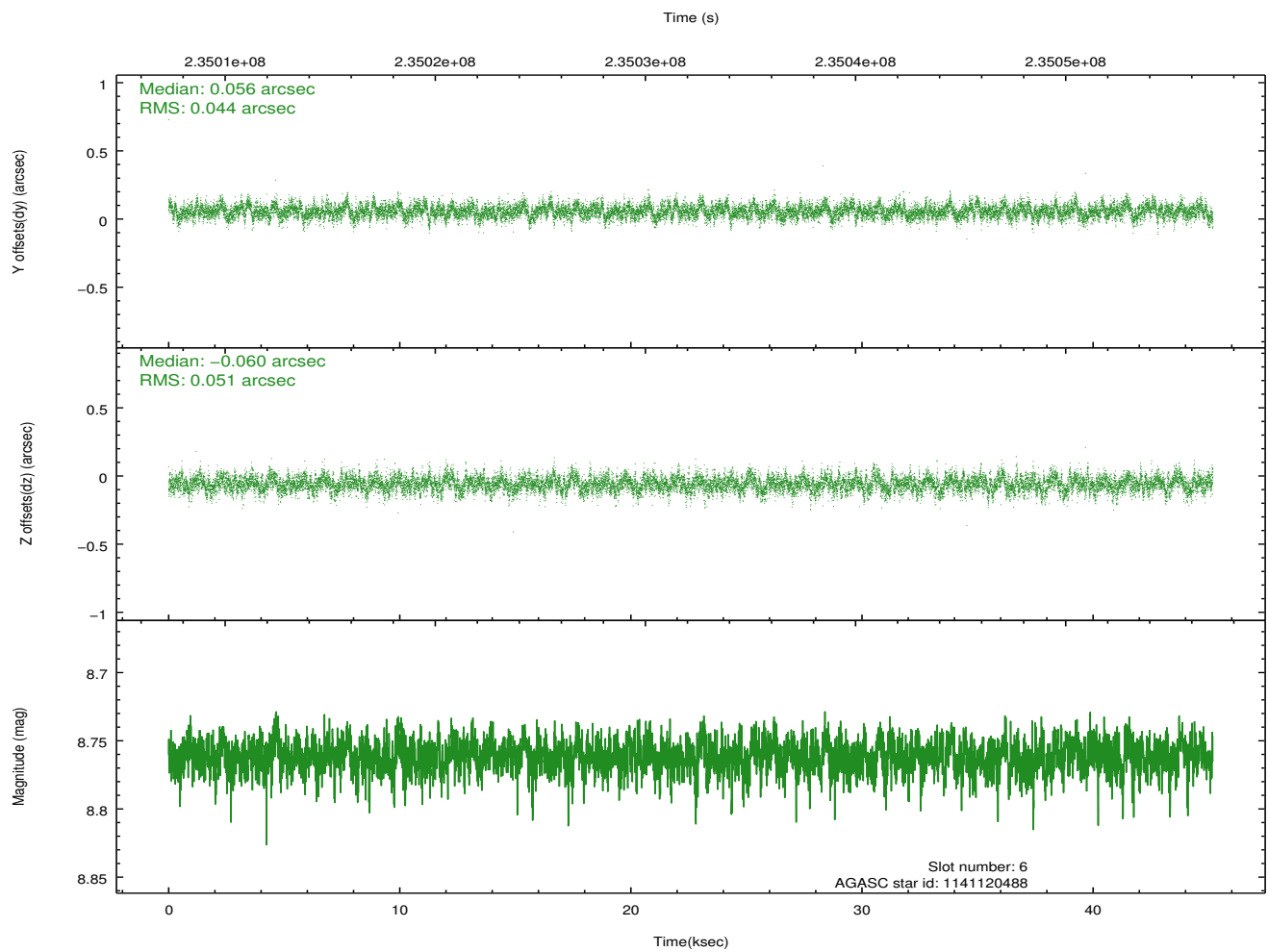
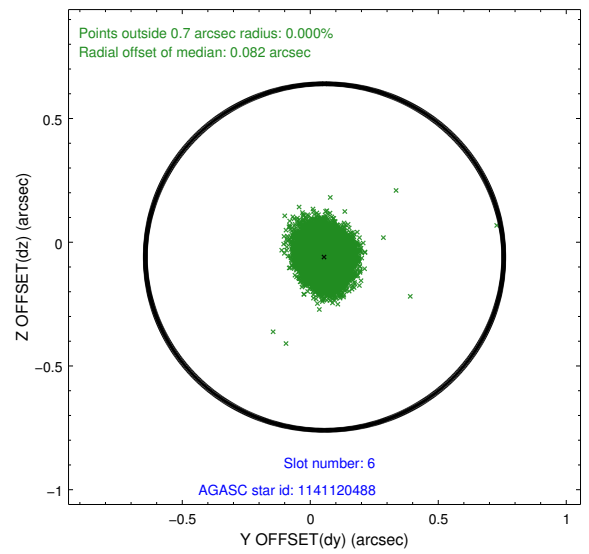
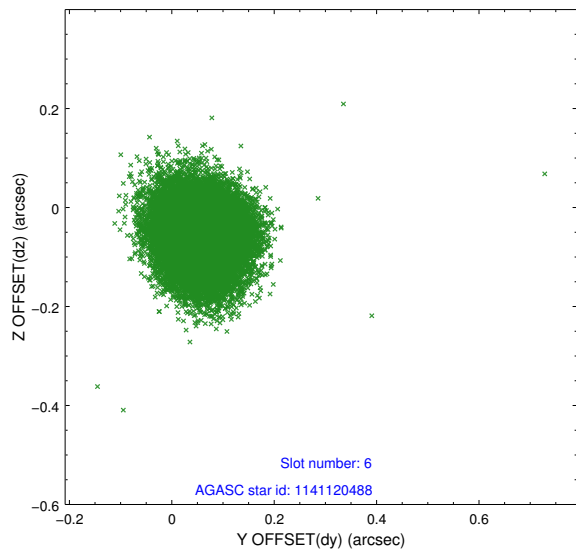
2.4.2 Slot 4



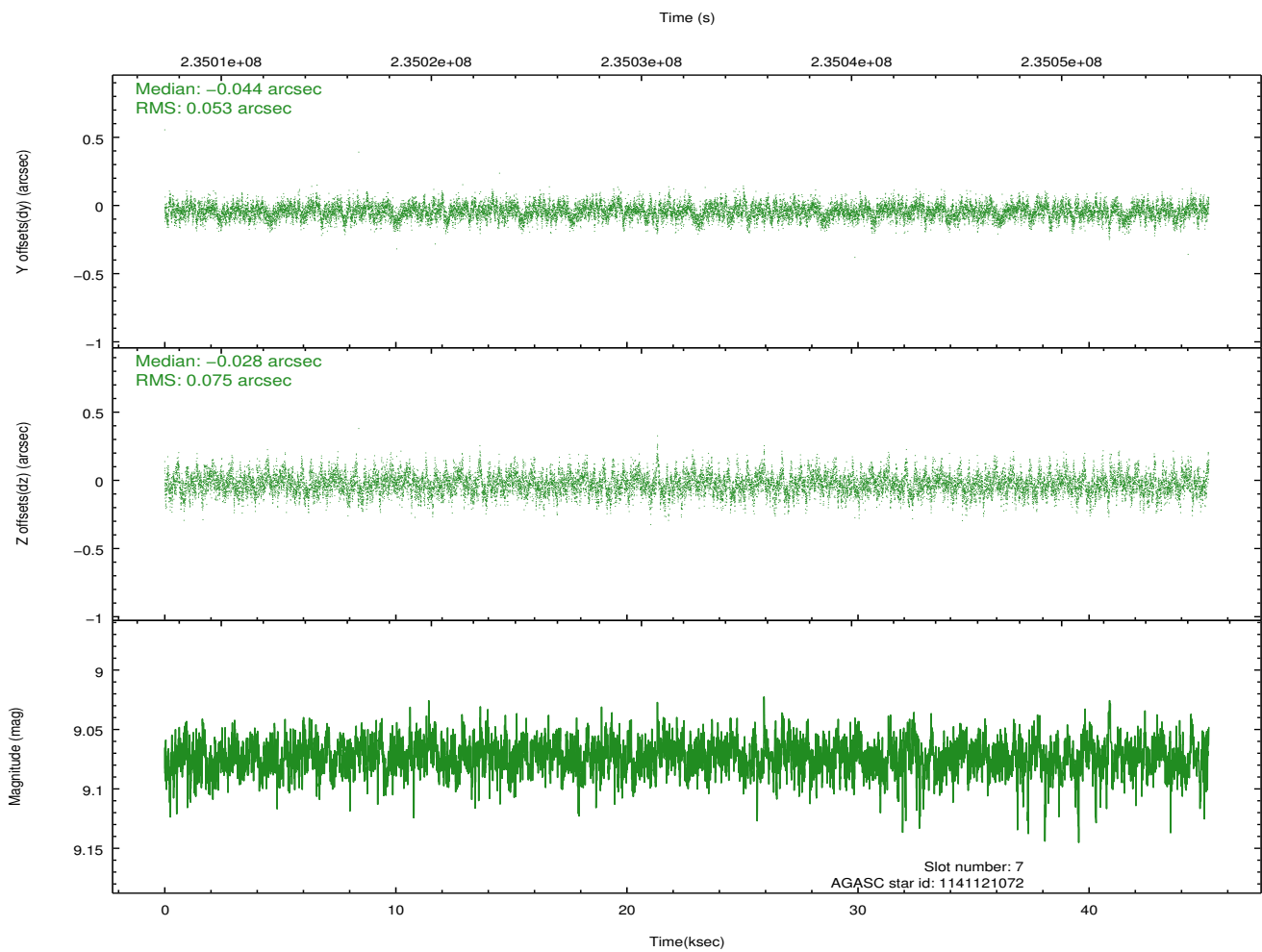
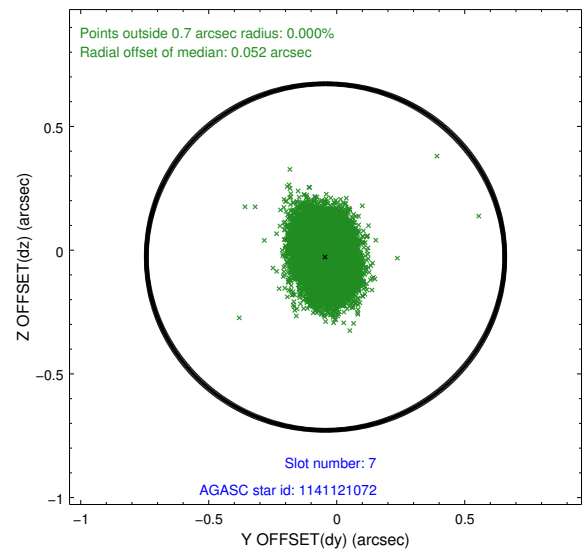
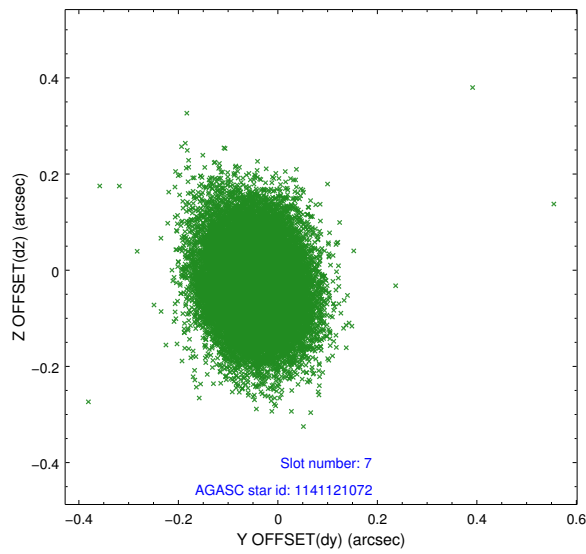
2.4.3 Slot 5



2.4.4 Slot 6

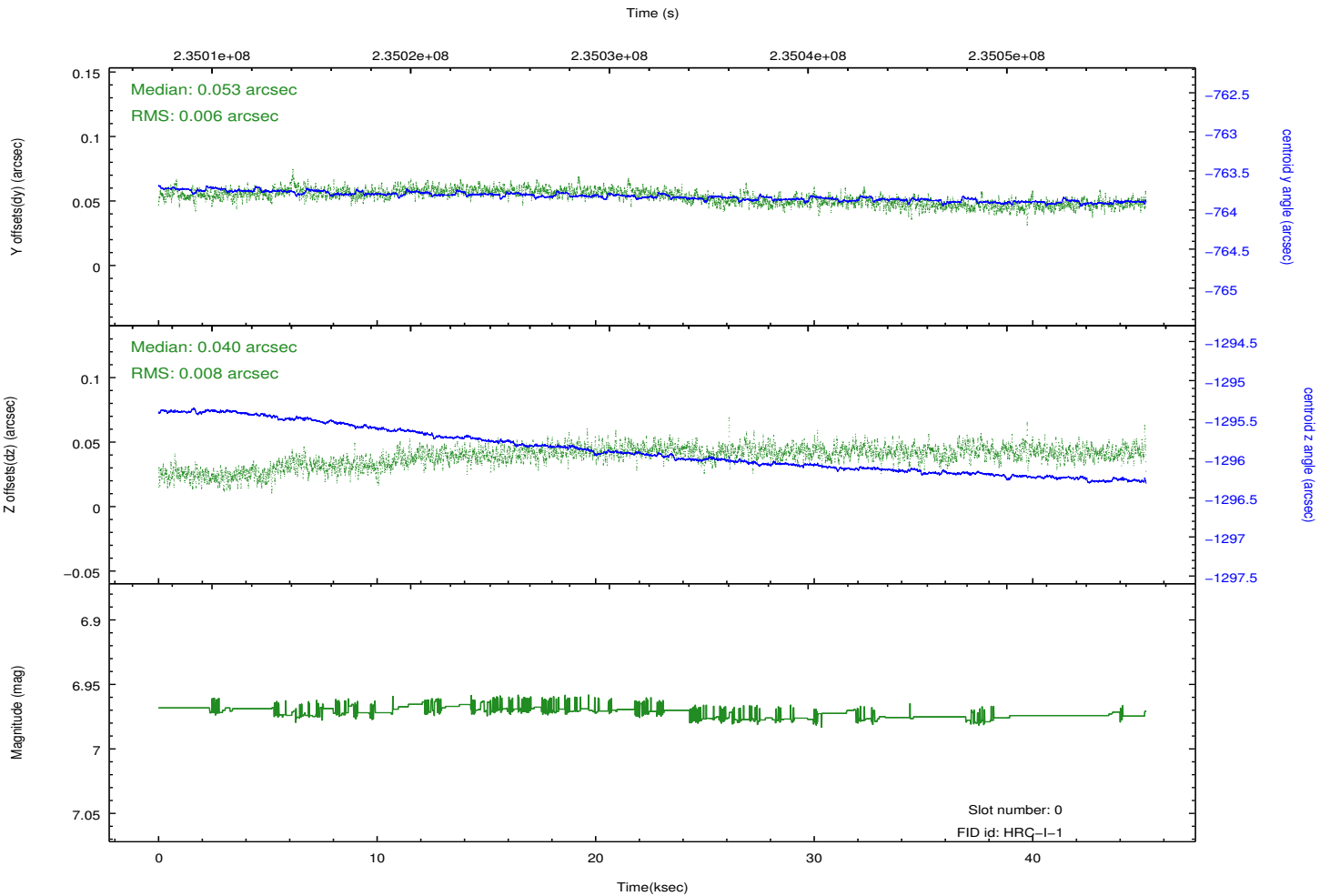
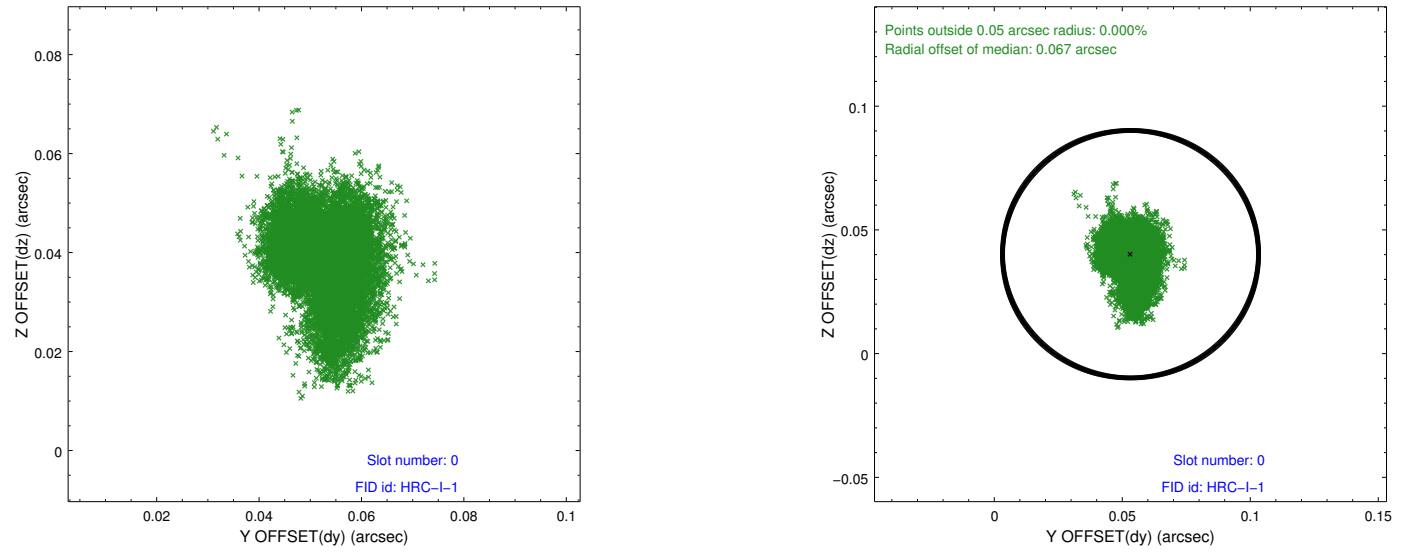


2.4.5 Slot 7

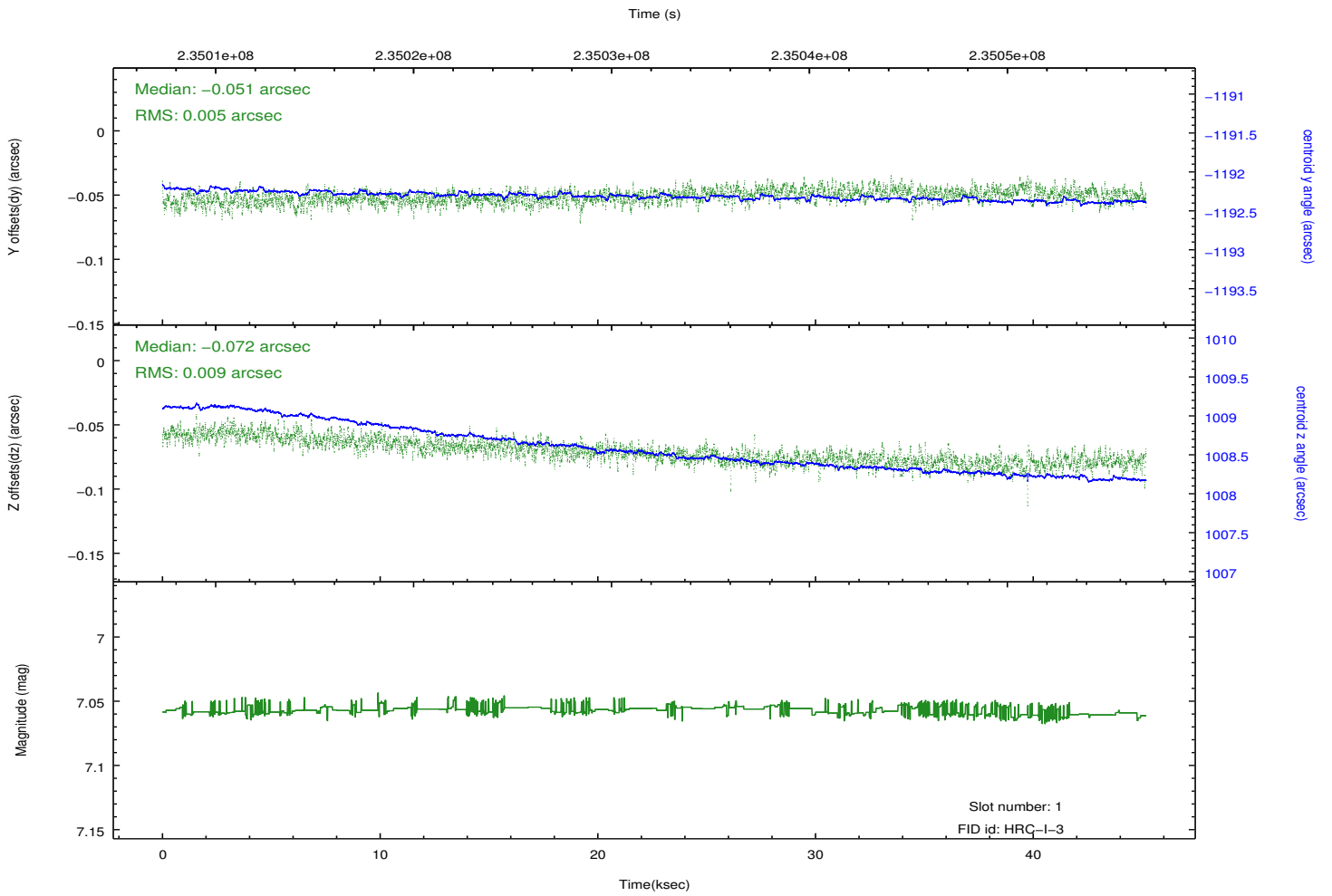
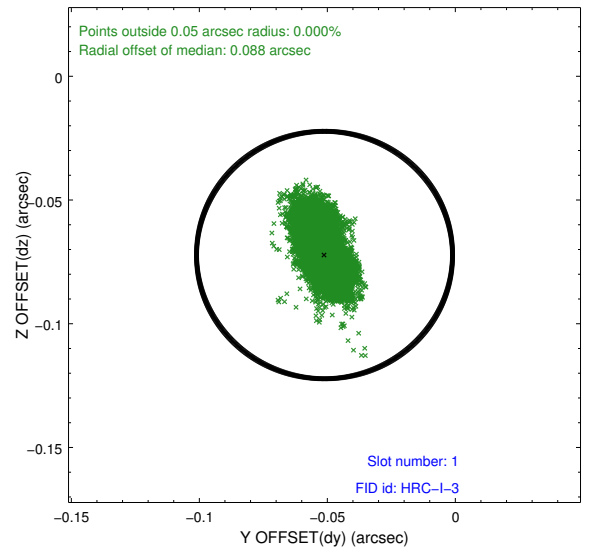
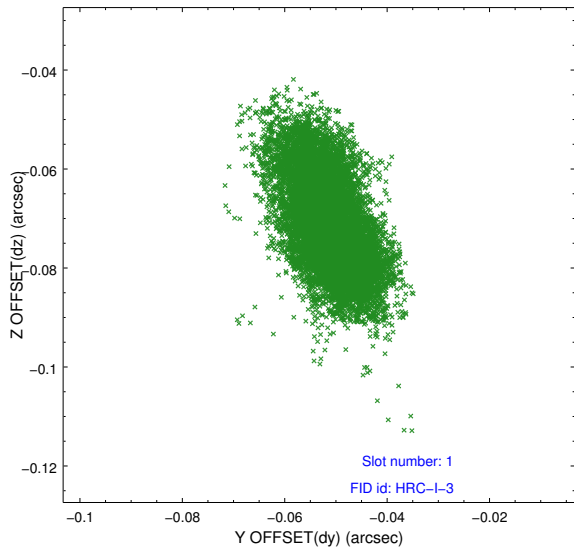


2.5 FID Slots

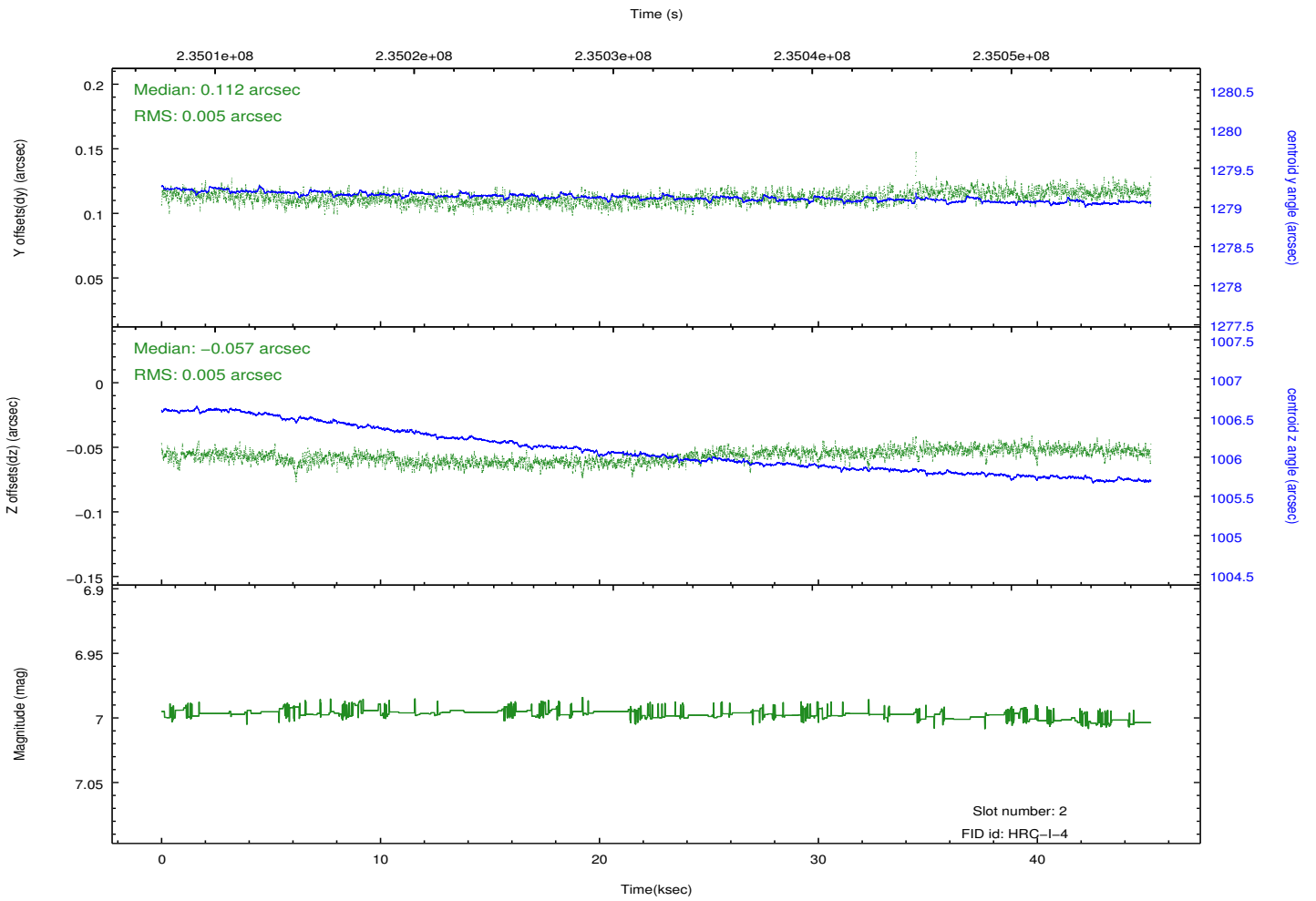
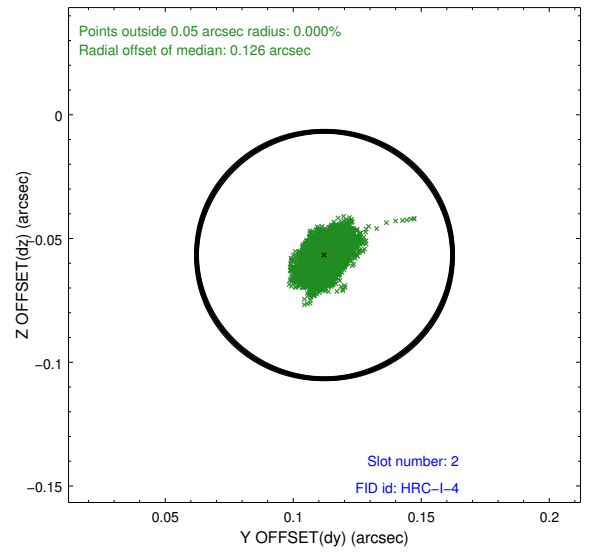
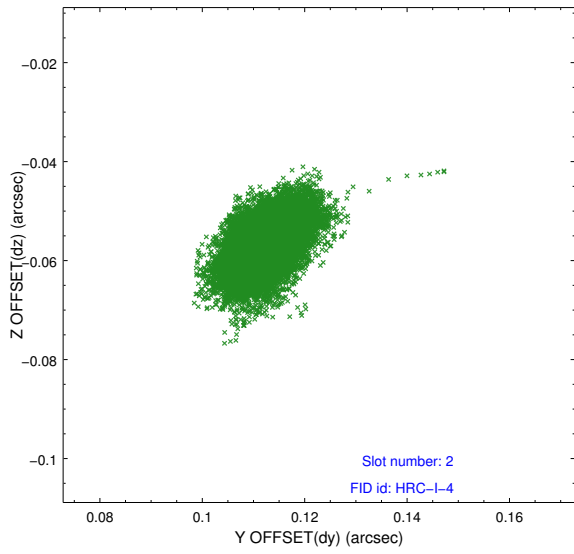
2.5.1 Slot 0



2.5.2 Slot 1



2.5.3 Slot 2



A Summary

A.1 Status

V&V Scientist	Jen Lauer
V&V Date (YYYY-MM-DD)	2013.01.17
V&V Edition	1
V&V Disposition and Status	OK
V&V Charge Time	45.18738

A.2 Comments