

V&V Reference Report

L2 ASCDS Version : 8.5.1

Observation 5525 - L2 Version 4
Chandra X-Ray Center

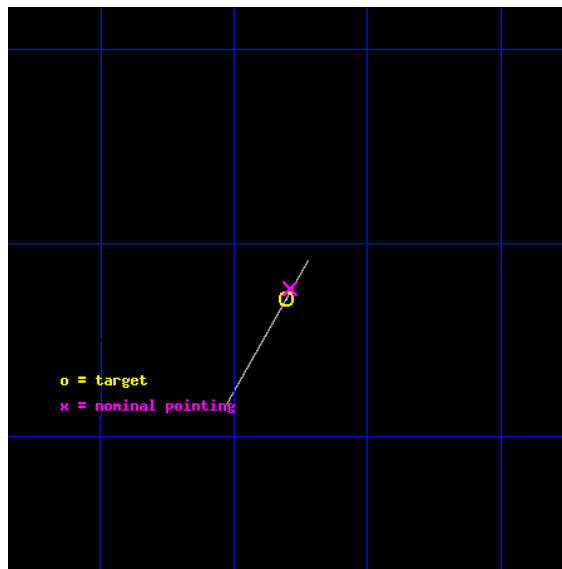
L2 Processing Date : Dec 18 2012

Contents

1	Front	2
2	OBI	3
2.1	OBI	3
2.1.1	Images	3
2.1.2	Bias	3
2.1.3	Parameters	4
2.1.4	Events	4
2.2	Compared Parameters	5
2.3	Aspect	6
2.4	Star Slots	9
2.4.1	Slot 3	9
2.4.2	Slot 4	10
2.4.3	Slot 5	11
2.4.4	Slot 6	12
2.4.5	Slot 7	13
2.5	FID Slots	14
2.5.1	Slot 0	14
2.5.2	Slot 1	15
2.5.3	Slot 2	16
A	Summary	17
A.1	Status	17
A.2	Comments	17

1 Front

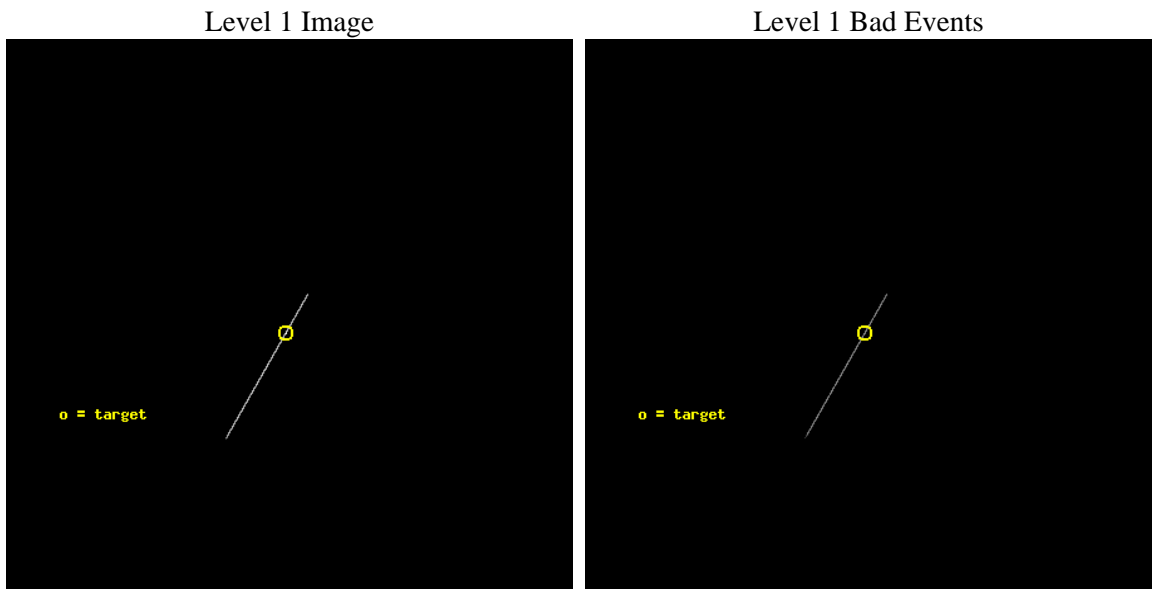
seq_num	500519	Sequence number
obs_id	5525	Observation id
title	Timing the Enigmatic Nearby Neutron Star RX J1308.8+2127	Proposal
observer	Prof. David Kaplan	Principal investigator
object	RX J1308.8+2127	Source name
ra_targ	197.20125	Observer's specified target RA [deg]
dec_targ	21.451889	Observer's specified target Dec [deg]
ra_nom	197.19773946015	Nominal RA [deg]
dec_nom	21.460888001794	Nominal Dec [deg]
roll_nom	119.82833479847	Nominal Roll [deg]
revision	4	Processing version of data
ontime	5639.25	Sum of GTIs [s]
livetime	5617.2216796875	Livetime [s]
ontime7	5639.25	Sum of GTIs [s]
l2events	24278	Number of level 2 events



2 OBI

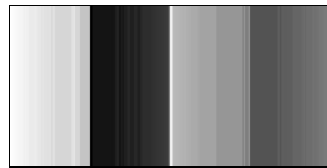
2.1 OBI

2.1.1 Images



2.1.2 Bias

Chip 7



2.1.3 Parameters

obi_num	0	Obi number	sched_exp_time	5500.000000	[s] Scheduled observation exposure time
ascdsver	8.5.1	Processing system revision	ontime	5639.25	Sum of GTIs [s]
caldbver	4.5.5	 	ontime7	5639.25	Sum of GTIs [s]
date	2012-12-18T06:53:36	Date and time of file creation	l1events	34365	Number of level 1 events
revision	4	Processing version of data			

2.1.4 Events

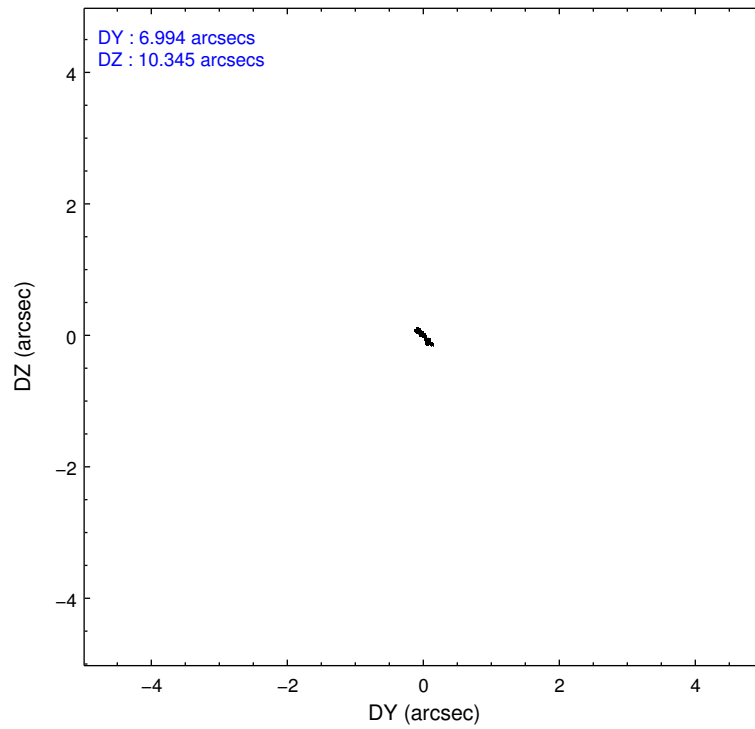
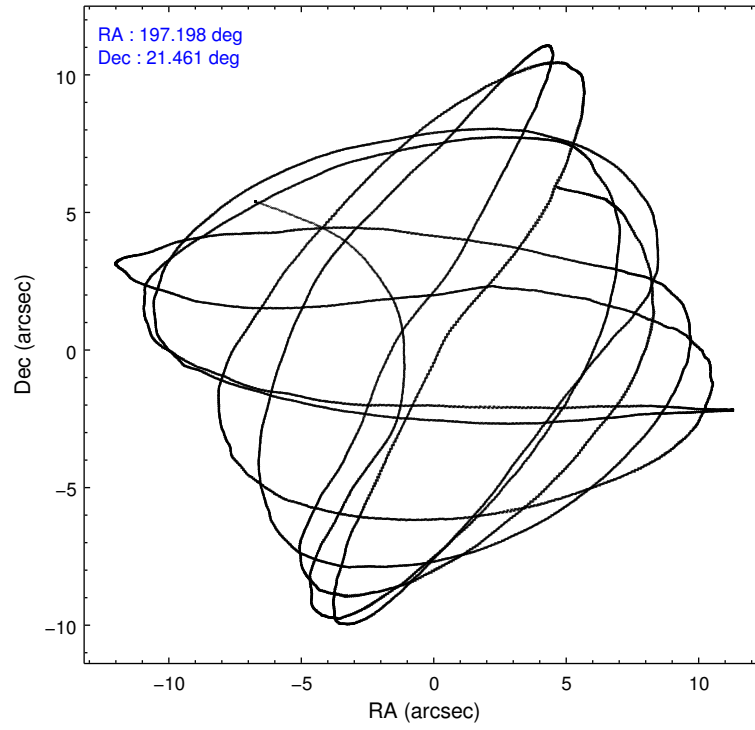
	ccd 7
level 1 events	34365
rejected events	8858
rejected %	25%

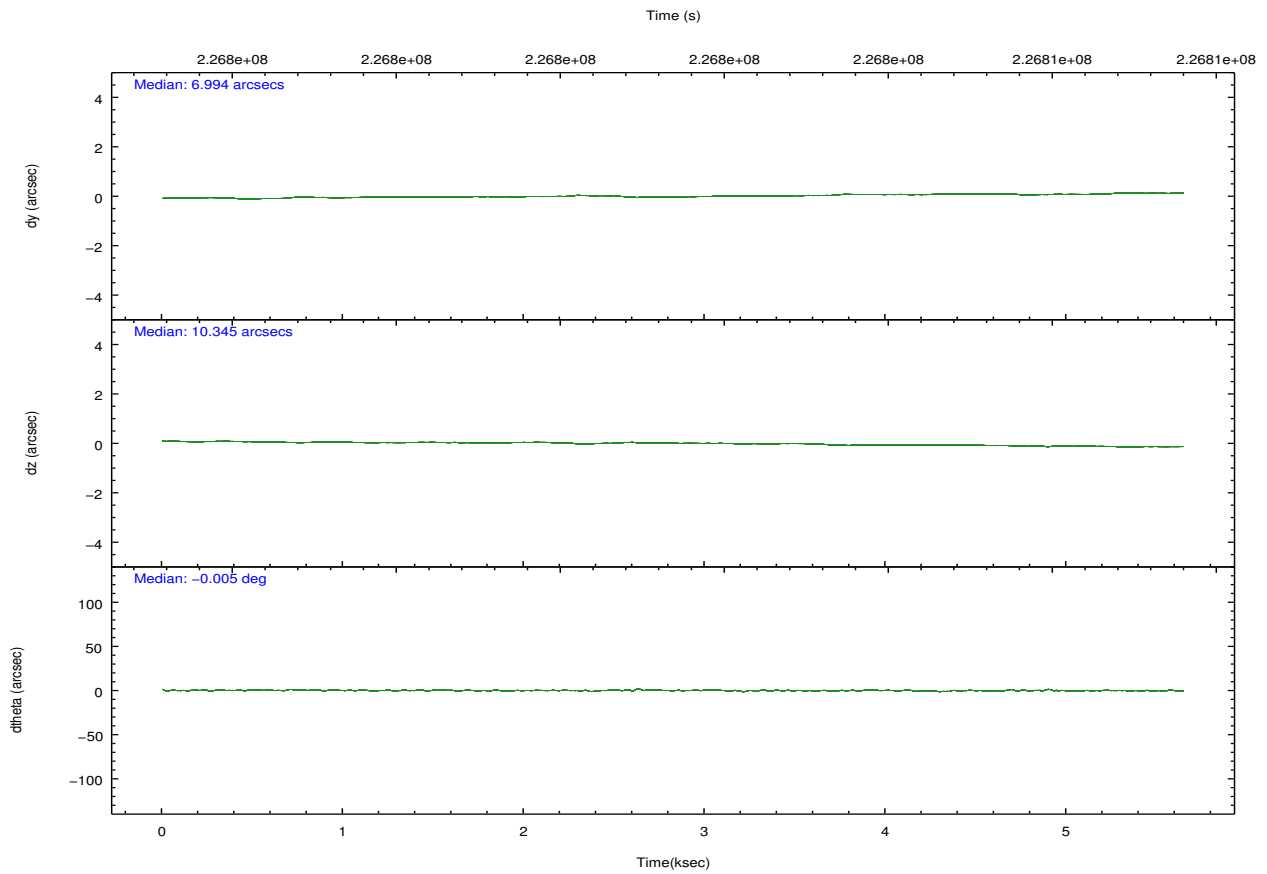
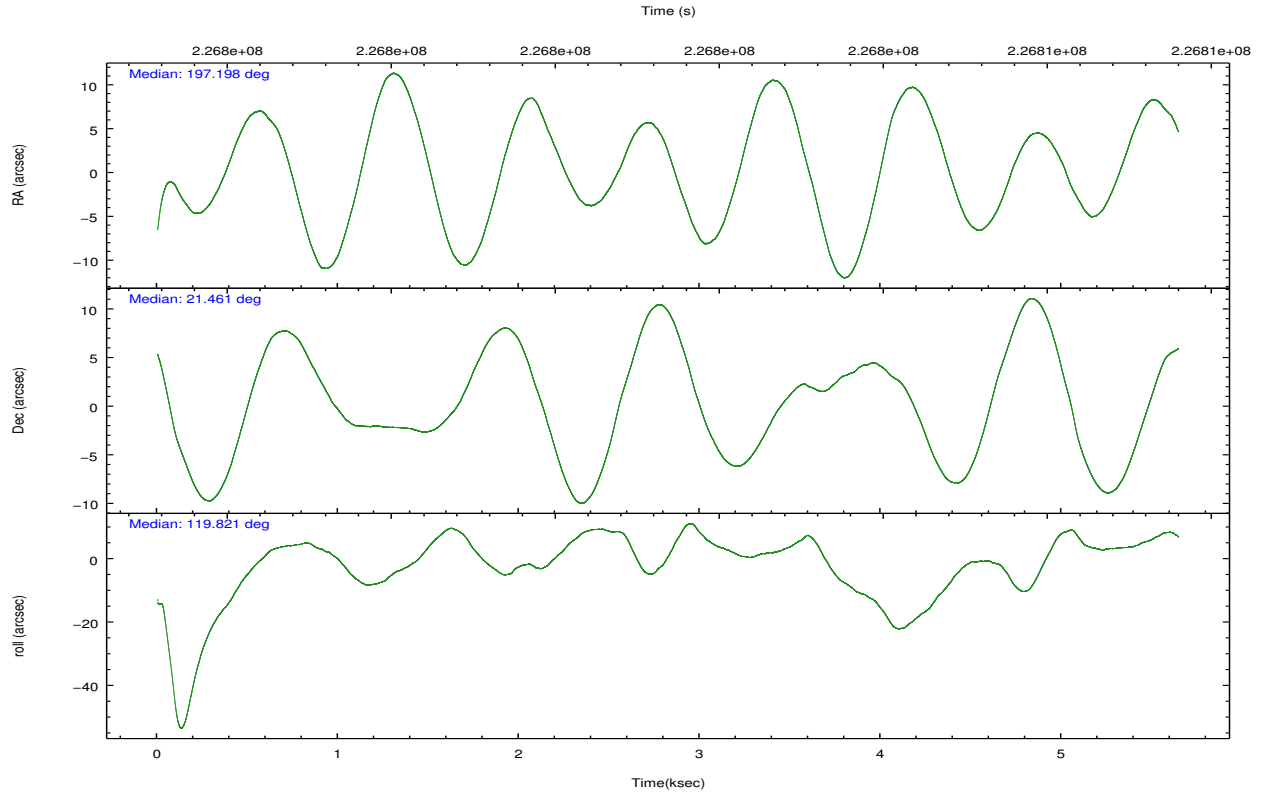
	ccd 7
grade 0 events	3855
	11%
grade 1 events	72
	0%
grade 2 events	7289
	21%
grade 3 events	2098
	6%
grade 4 events	2076
	6%
grade 5 events	5106
	14%
grade 6 events	13869
	40%
grade 7 events	0
	0%

2.2 Compared Parameters

Parameter	Planned	Actual	Parameter	Planned	Actual
Instrument	ACIS	ACIS	Obspar format version number	7	7
Detector	ACIS-7	ACIS-7	Obspar file type	PREDICTED	ACTUAL
Grating	NONE	NONE	Obspar update status	NONE	UPDATED
Data mode	CC33_FAINT	CC33_FAINT	Number of optional ACIS chips dropped	0	0
Observation mode	POINTING	POINTING	On-chip summing requested	N	N
[deg] Pointing RA	197.223232	197.197739460153	Subarray requested	NONE	NONE
[deg] Pointing Dec	21.447630	21.46088800179371	Alternating exposures requested	N	N
[deg] Pointing Roll	119.662291	119.8283347984702	[s] Primary exposure time	0.000000	0
[mm] SIM focus pos	-0.684267	-0.6828225247311905			
[mm] SIM defocus	0	0.001444936568705701			
[mm] SIM translation stage pos	-190.132523	-190.1400660498719			
[mm] SIM translation stage offset	0	0.00754346686406393			
[s] Observation start time (MET)	226801014.184000	226799970.70254			
Observation start date	2005-03-10T00:15:50	2005-03-09T23:59:30			
[s] Observation end time (MET)	226806514.184000	226807472.67788			
Observation end date	2005-03-10T01:47:30	2005-03-10T02:04:32			
Read mode	CONTINUOUS	CONTINUOUS			

2.3 Aspect





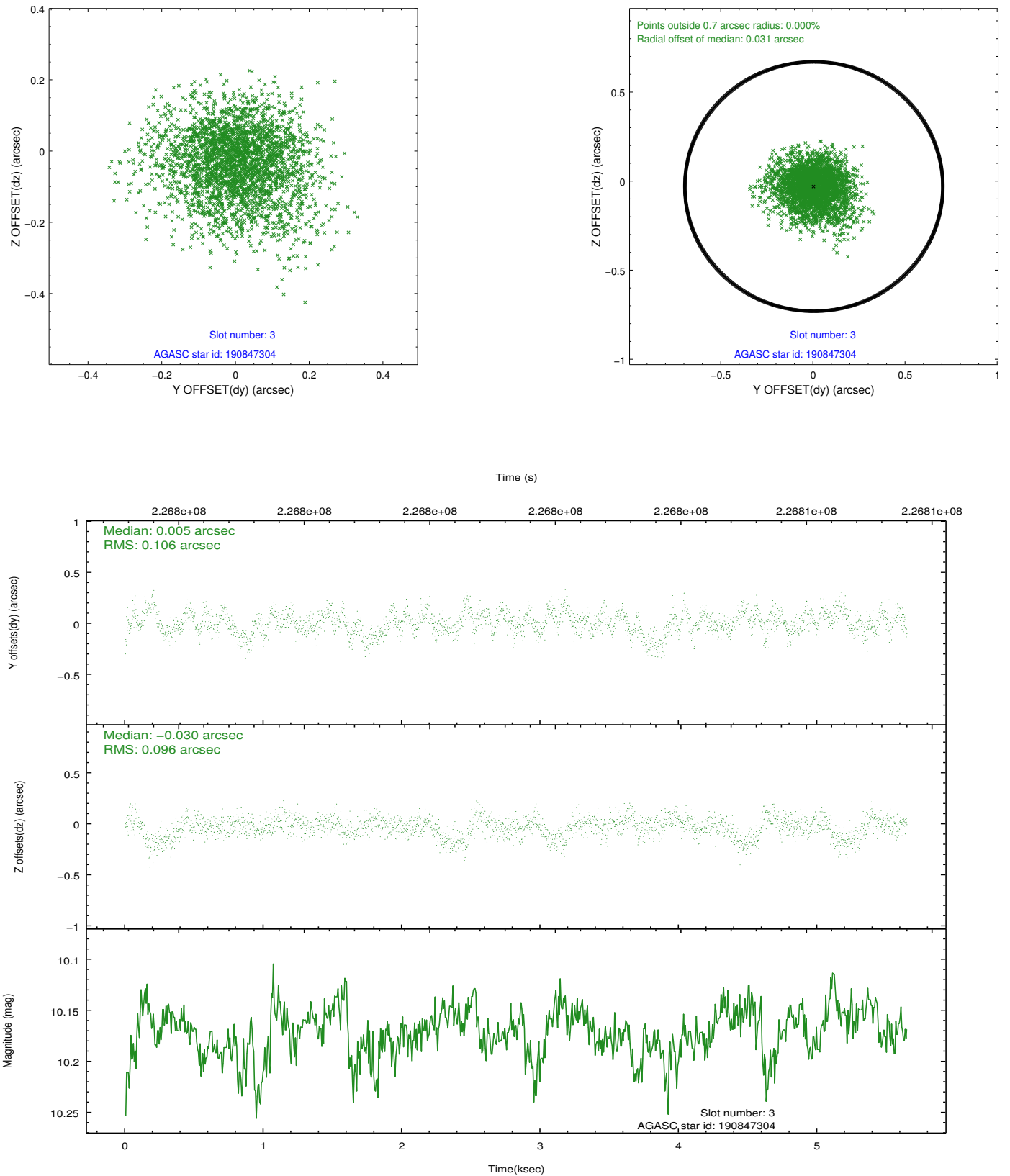
Slot Statistics

slot	status	id	mag	n_pts	med_dy	med_dz	dr1	dr2	ra	dec	mean_y	mean_z
0	FID	ACIS-S-2	7.10	1377	-0.058	-0.023	0.007	0.012	0.000000	0.000000	-759.77	-1731.62
1	FID	ACIS-S-4	7.20	1377	0.092	0.034	0.006	0.010	0.000000	0.000000	2153.13	175.88
2	FID	ACIS-S-5	7.23	1377	-0.066	-0.002	0.008	0.012	0.000000	0.000000	-1811.30	170.64
3	GUIDE	190847304	10.17	2753	0.005	-0.030	0.151	0.253	196.395854	21.619494	1915.16	2096.72
4	GUIDE	190972784	9.63	2754	-0.019	0.067	0.167	0.247	197.351360	22.226147	2226.00	-1757.05
5	GUIDE	190973928	9.83	2755	-0.065	0.042	0.160	0.270	197.904188	21.564389	-756.24	-2191.81
6	BAD	190977856	12.27	1948	-9.405	2.271	8.337	10.548	198.028070	21.417679	-1433.79	-2292.02
7	GUIDE	190979840	10.35	2751	0.075	-0.091	0.174	0.292	197.337465	20.846267	-2070.83	736.26

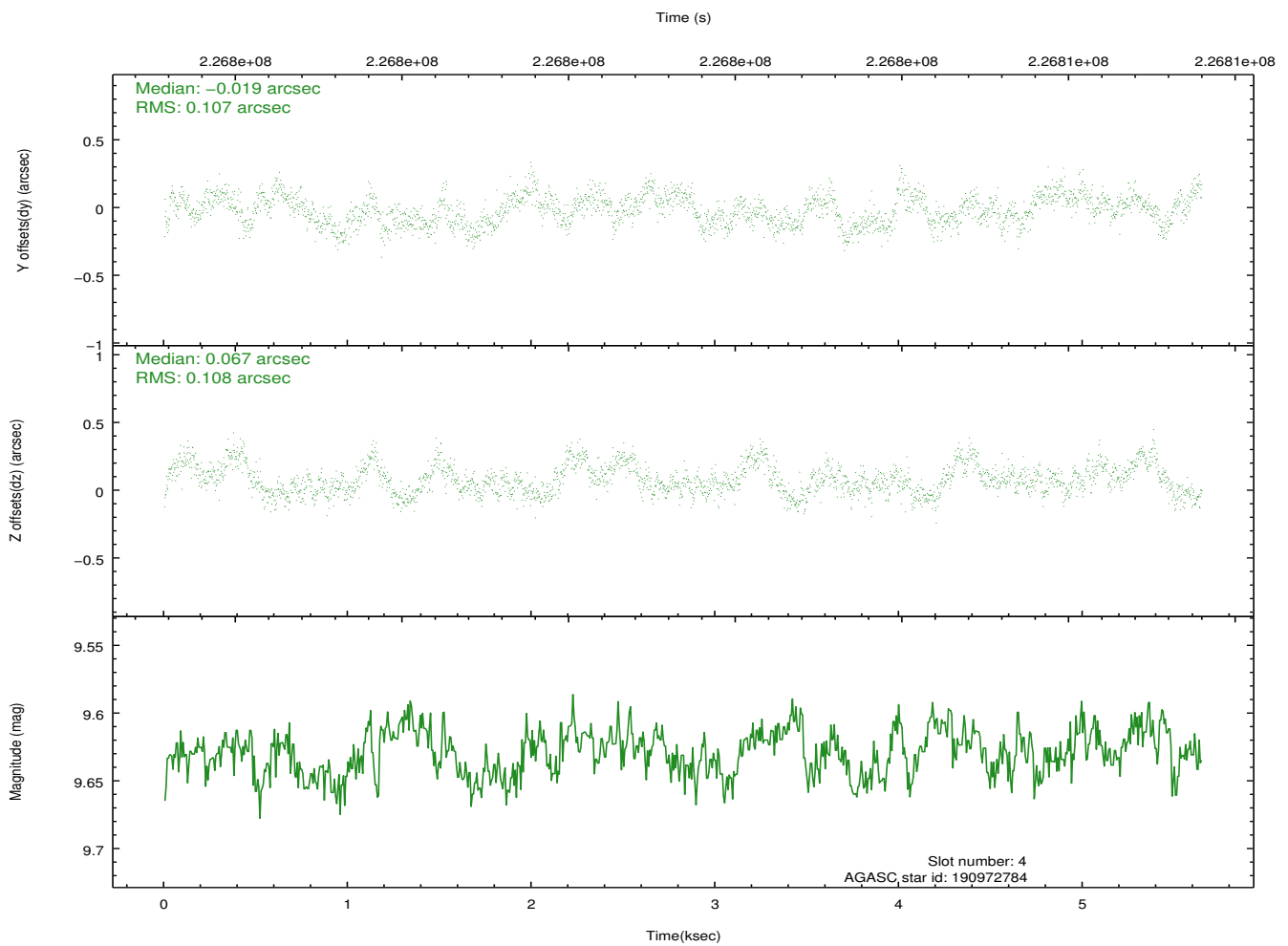
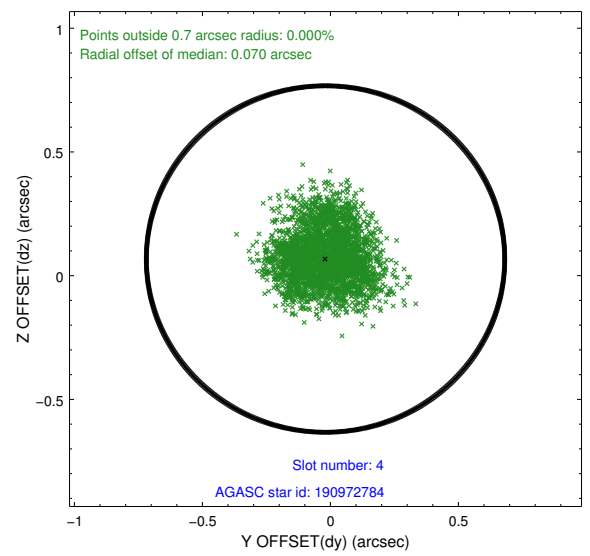
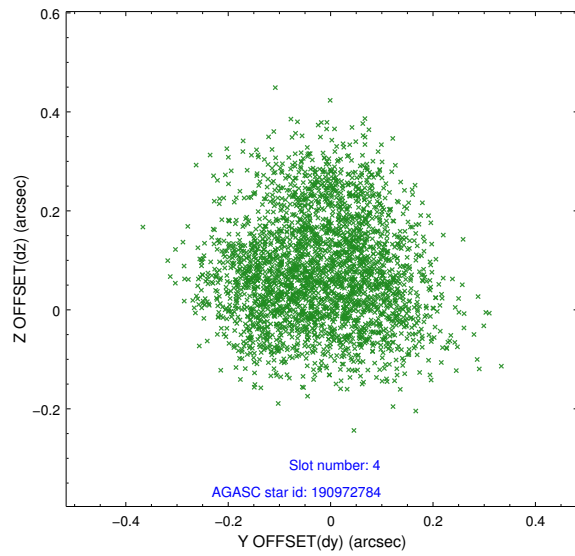
∞

2.4 Star Slots

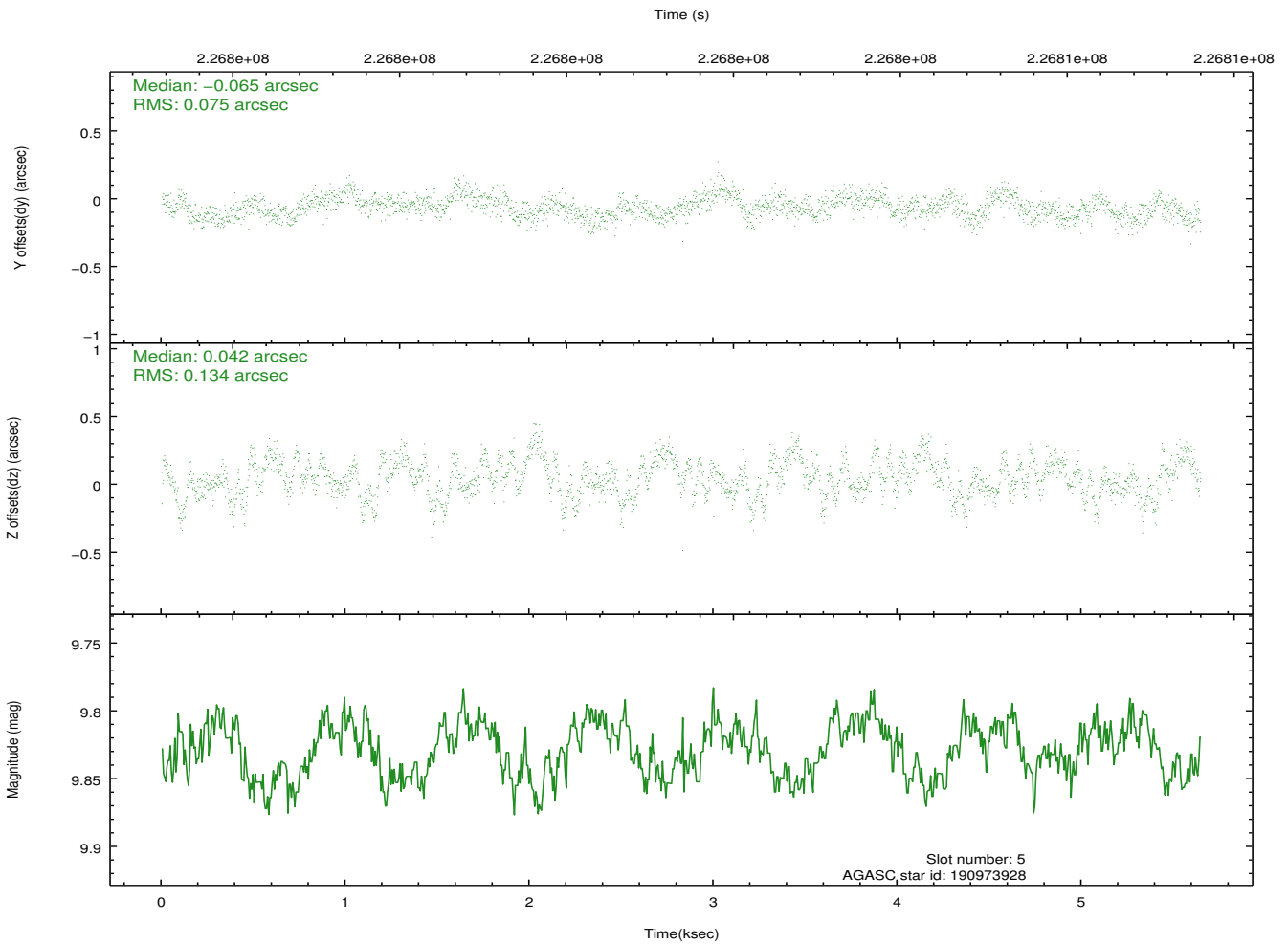
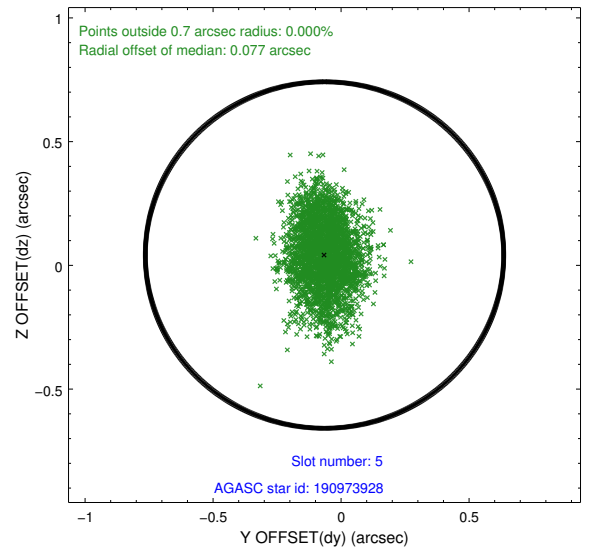
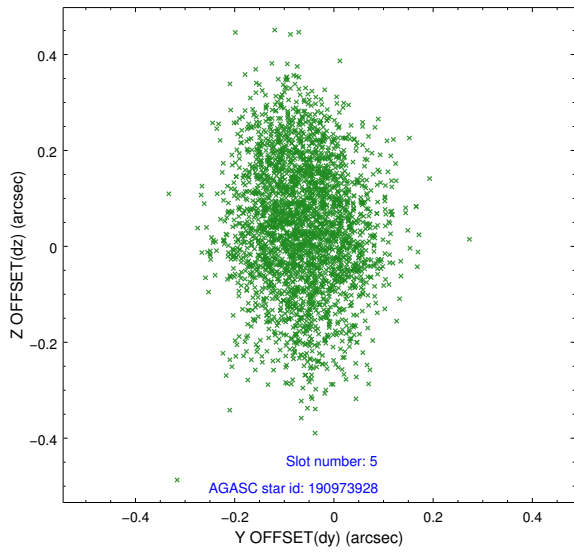
2.4.1 Slot 3



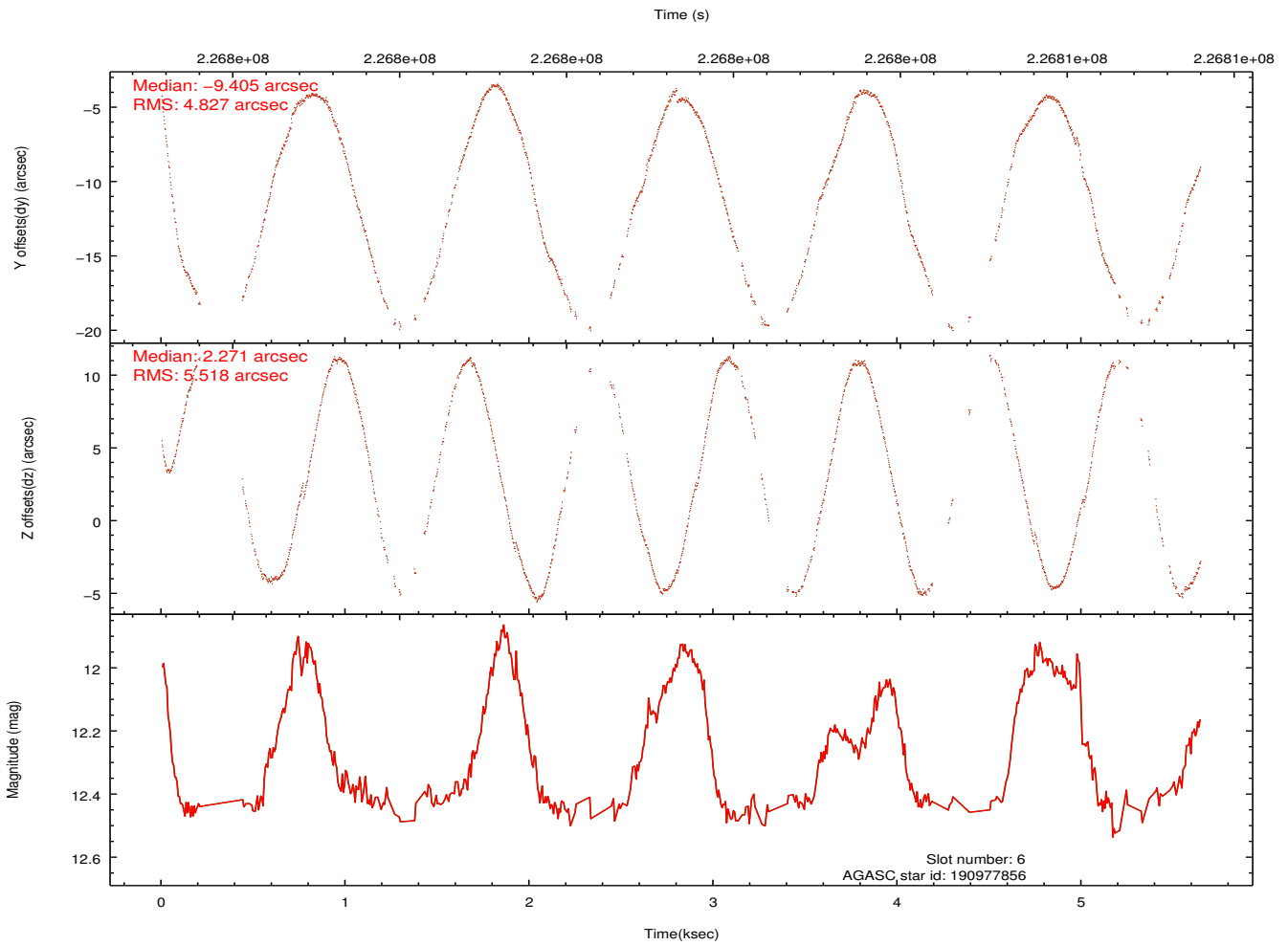
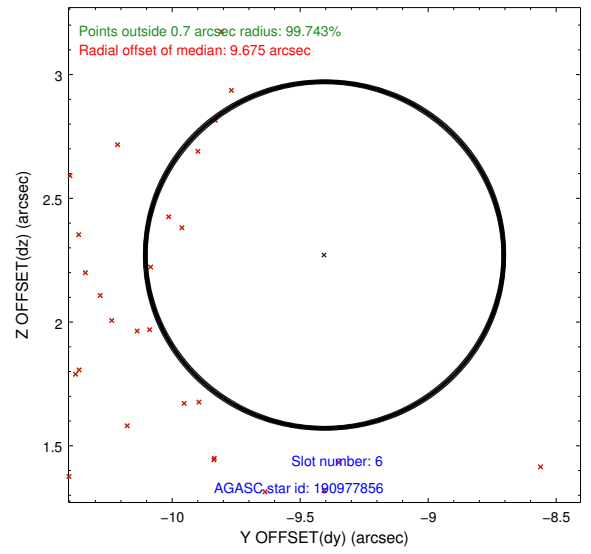
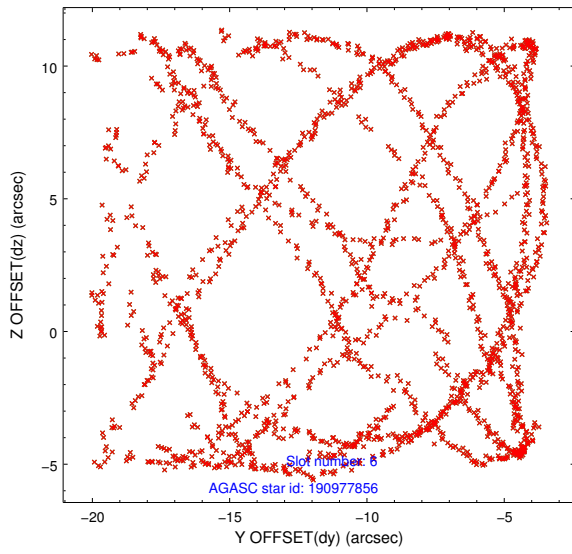
2.4.2 Slot 4



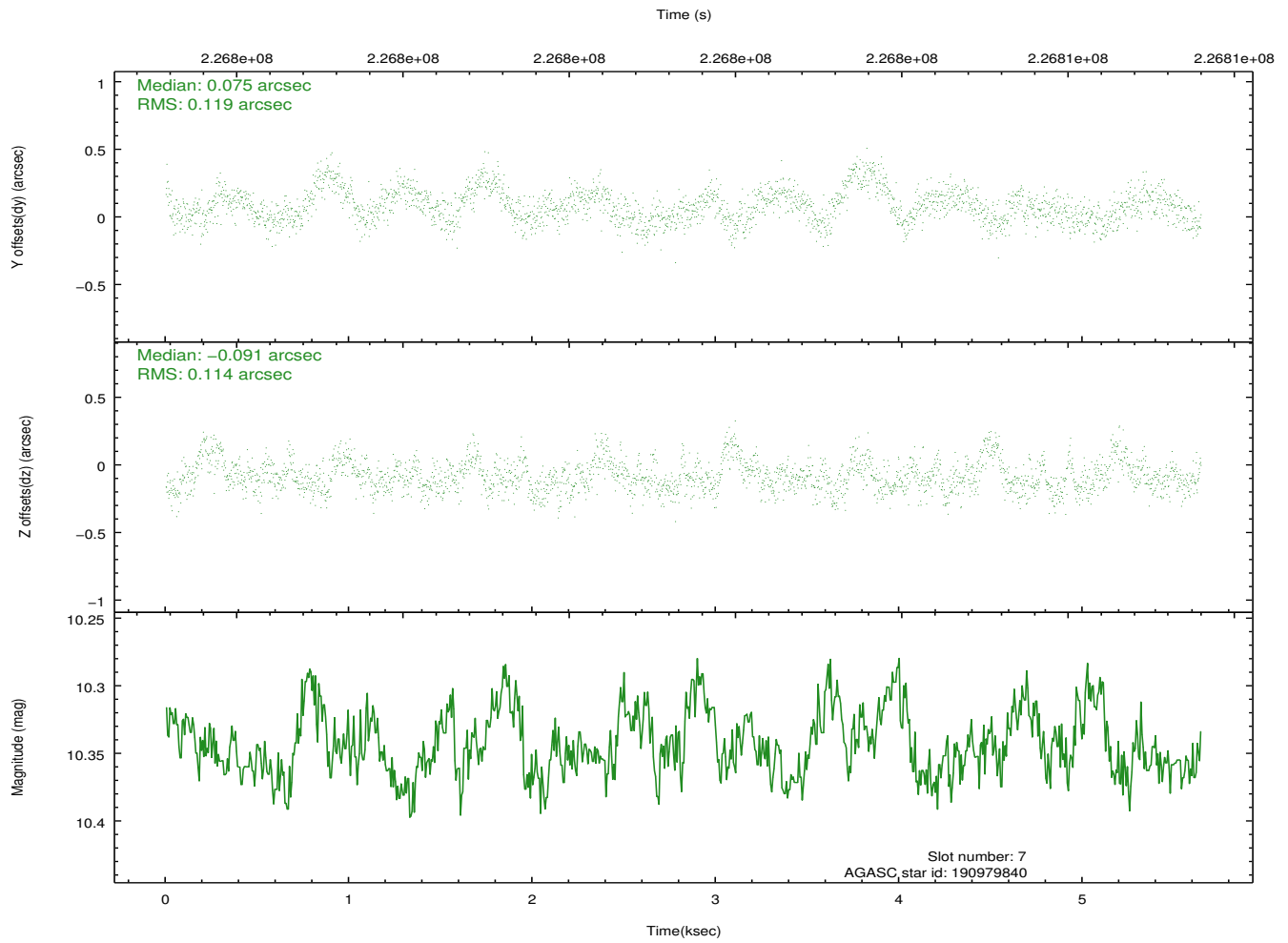
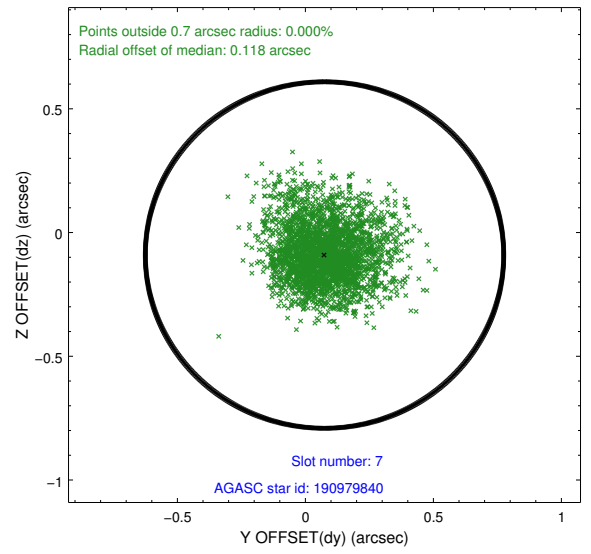
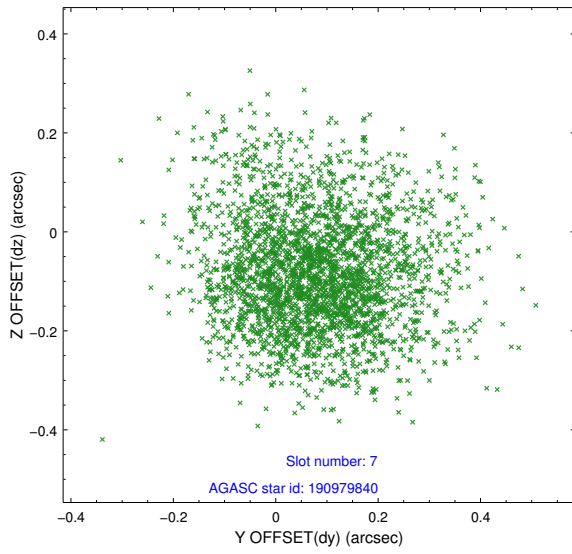
2.4.3 Slot 5



2.4.4 Slot 6

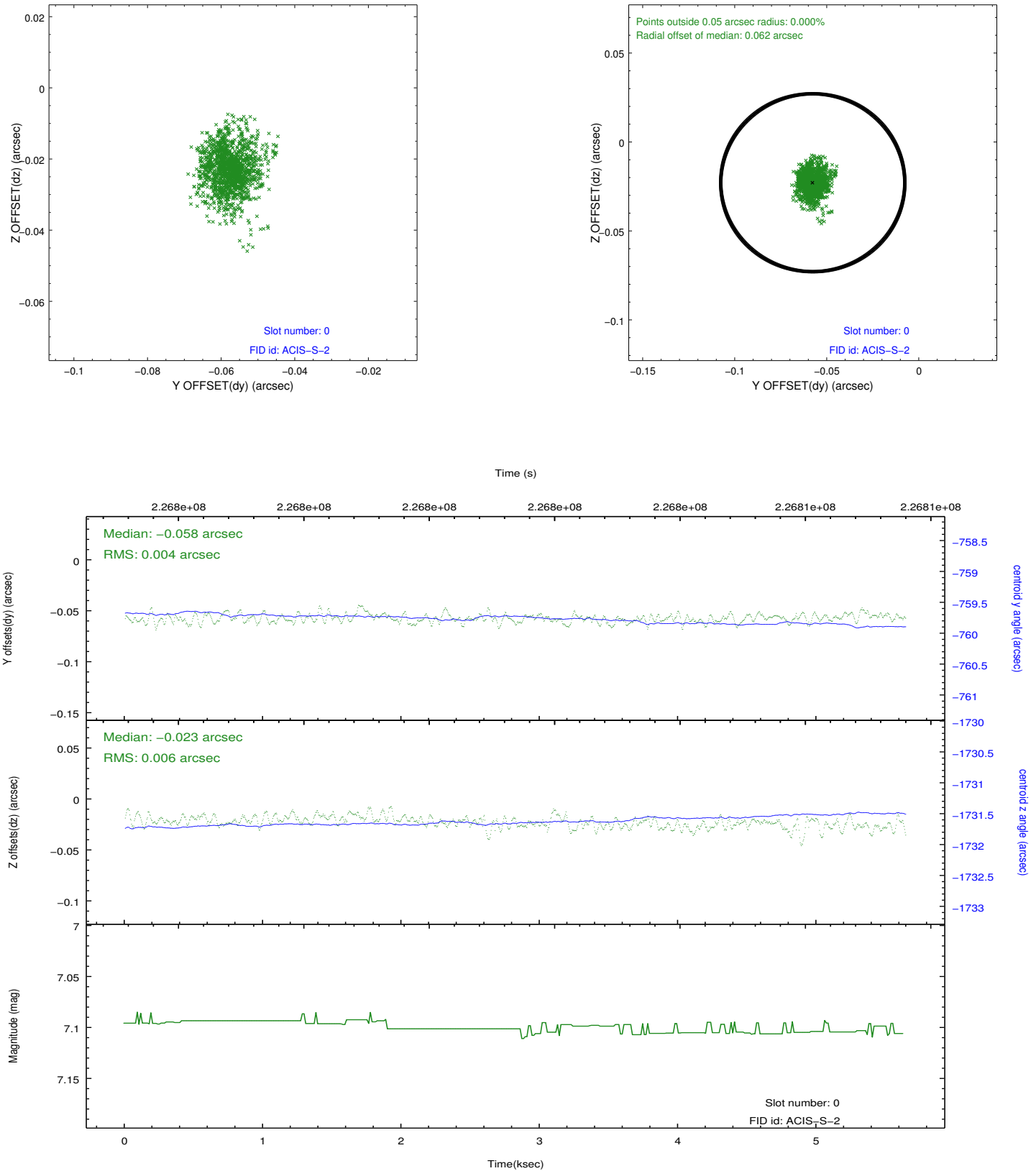


2.4.5 Slot 7

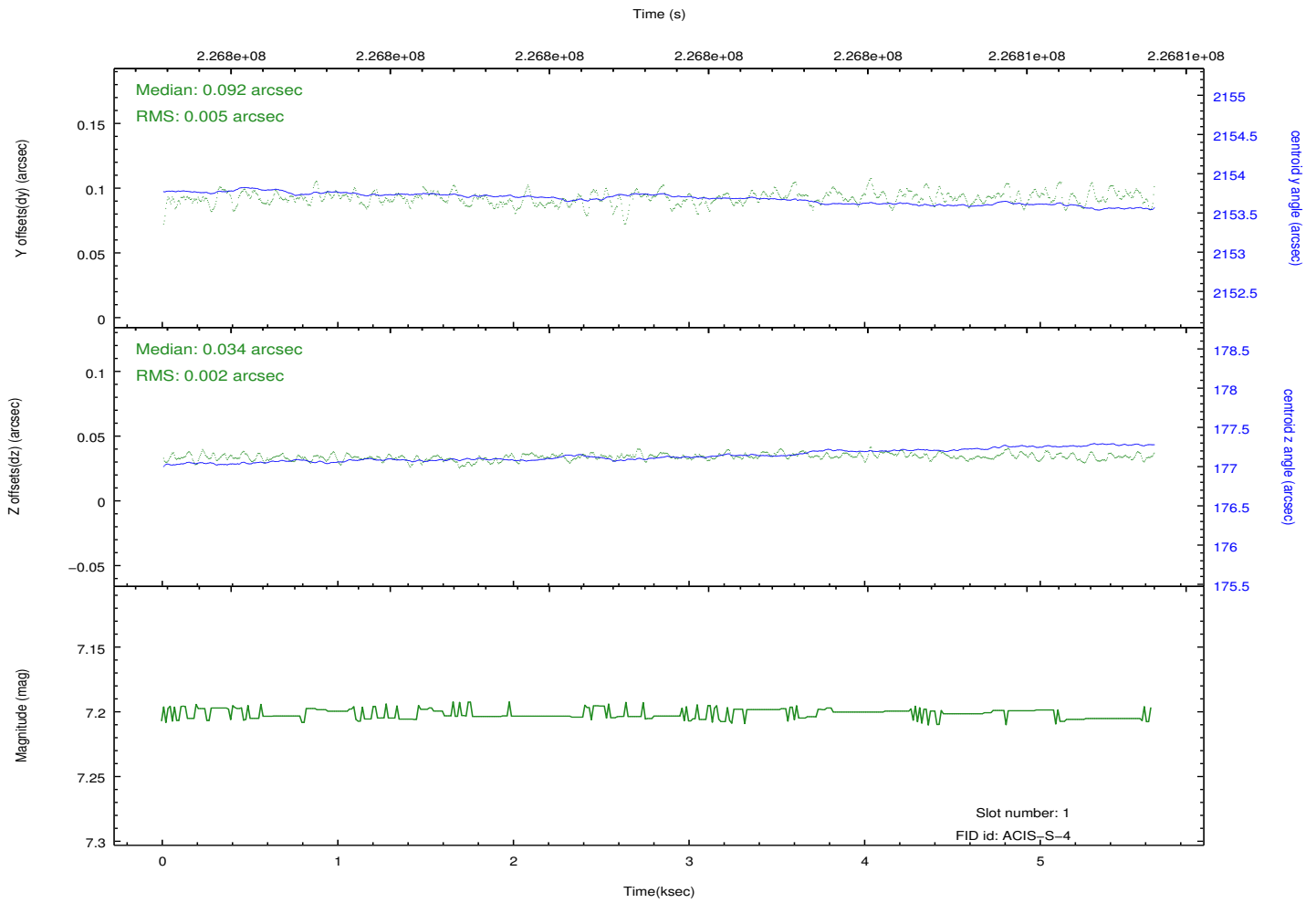
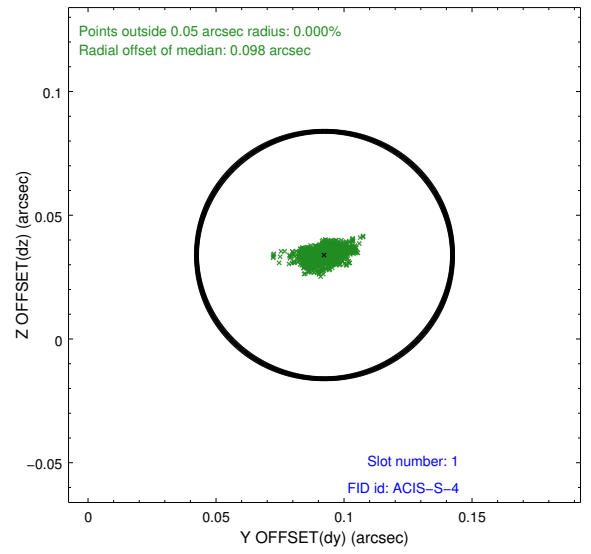
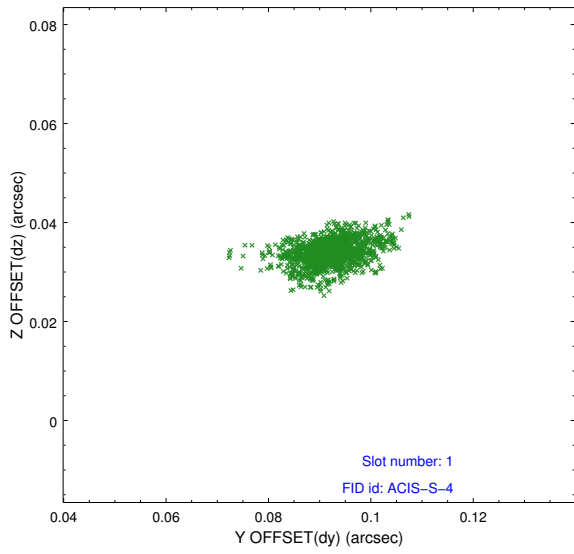


2.5 FID Slots

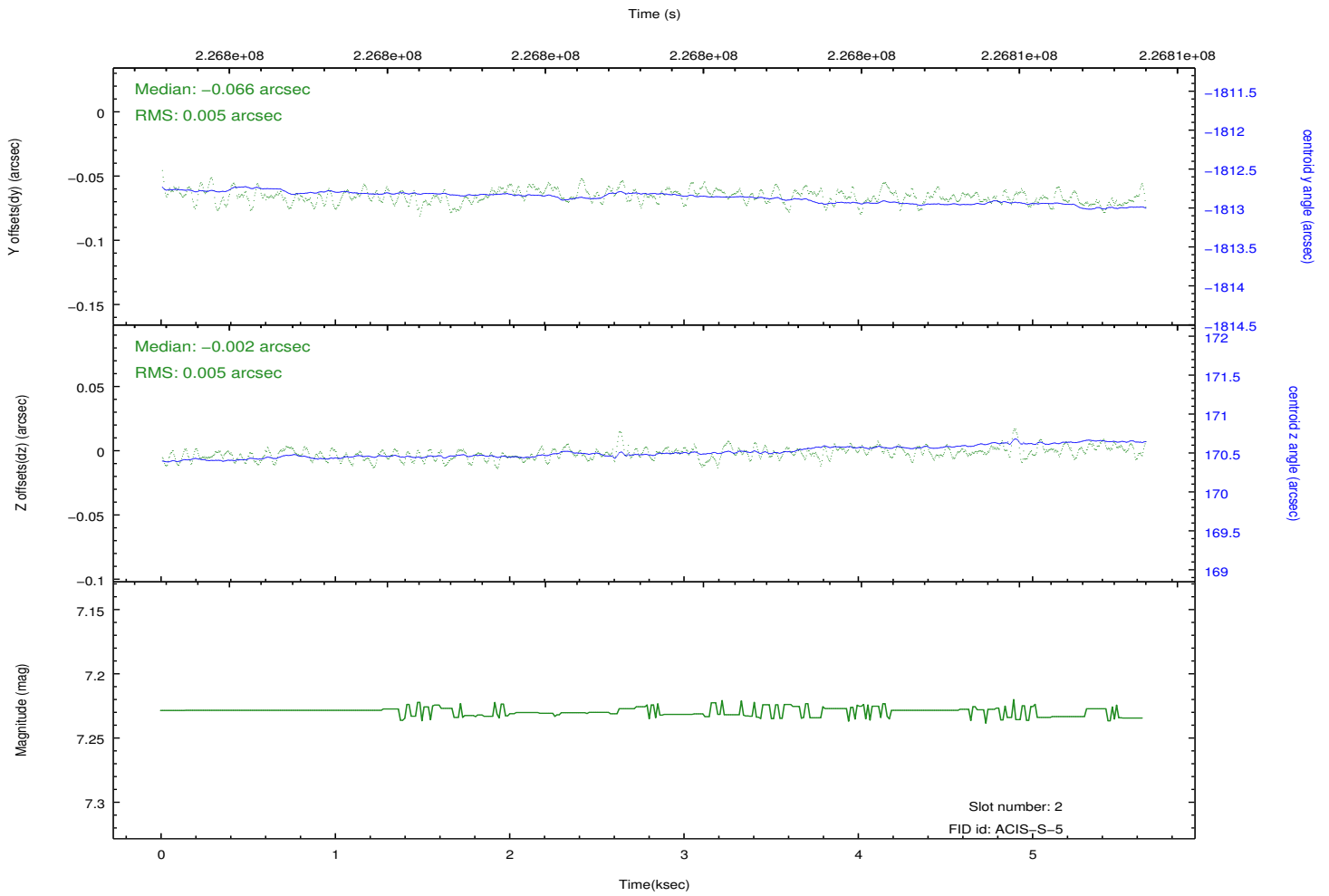
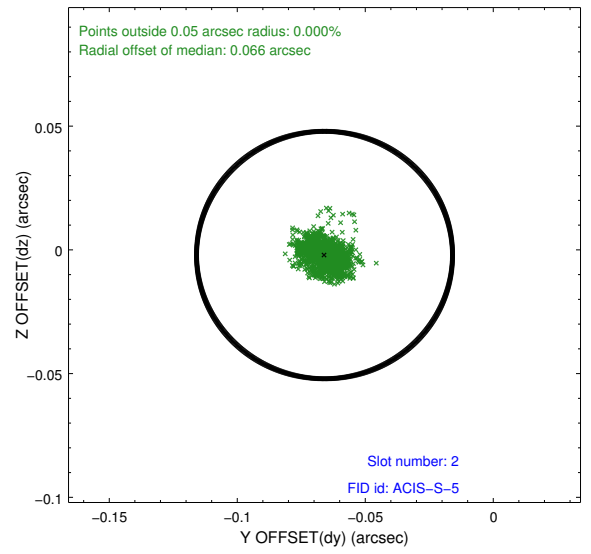
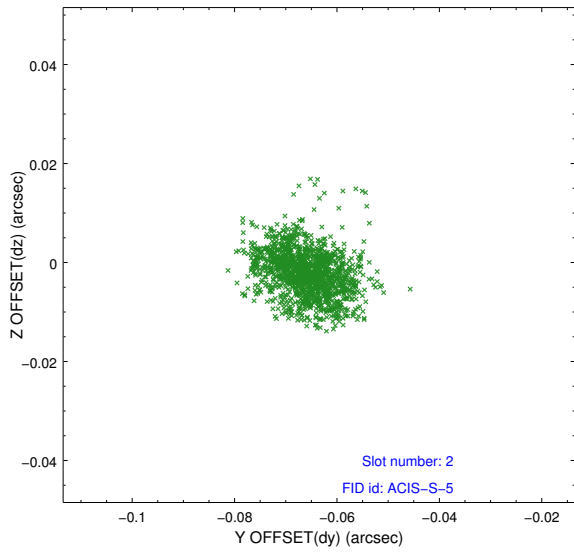
2.5.1 Slot 0



2.5.2 Slot 1



2.5.3 Slot 2



A Summary

A.1 Status

V&V Scientist	Joy Nichols
V&V Date (YYYY-MM-DD)	2013.01.18
V&V Edition	1
V&V Disposition and Status	OK
V&V Charge Time	5.643

A.2 Comments

The guide star in slot 6 was removed from the aspect solution due to poor data quality. The aspect solution is improved by the removal of this guide star from the solution. Solution reviewed by Aspect Team.