

V&V Reference Report

L2 ASCDS Version : 8.5.1

Observation 5585 - L2 Version 3
Chandra X-Ray Center

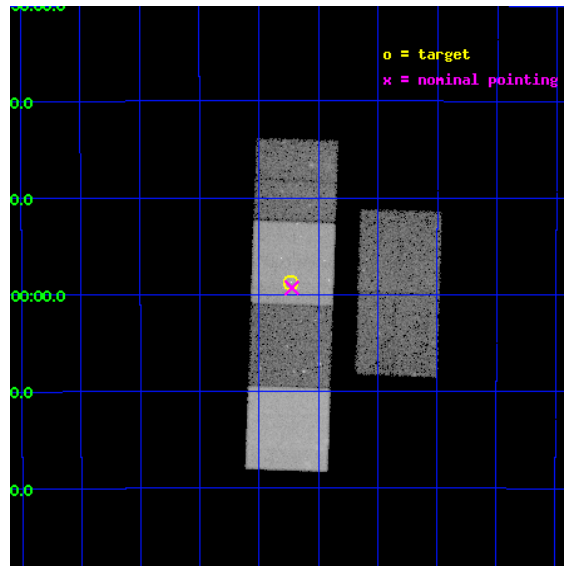
L2 Processing Date : Dec 14 2012

Contents

1	Front	2
2	OBI	3
2.1	OBI	3
2.1.1	Images	3
2.1.2	Bias	3
2.1.3	Parameters	4
2.1.4	Events	4
2.2	Compared Parameters	5
2.3	Aspect	6
2.4	Star Slots	9
2.4.1	Slot 3	9
2.4.2	Slot 4	10
2.4.3	Slot 5	11
2.4.4	Slot 6	12
2.4.5	Slot 7	13
2.5	FID Slots	14
2.5.1	Slot 0	14
2.5.2	Slot 1	15
2.5.3	Slot 2	16
A	Summary	17
A.1	Status	17
A.2	Comments	17

1 Front

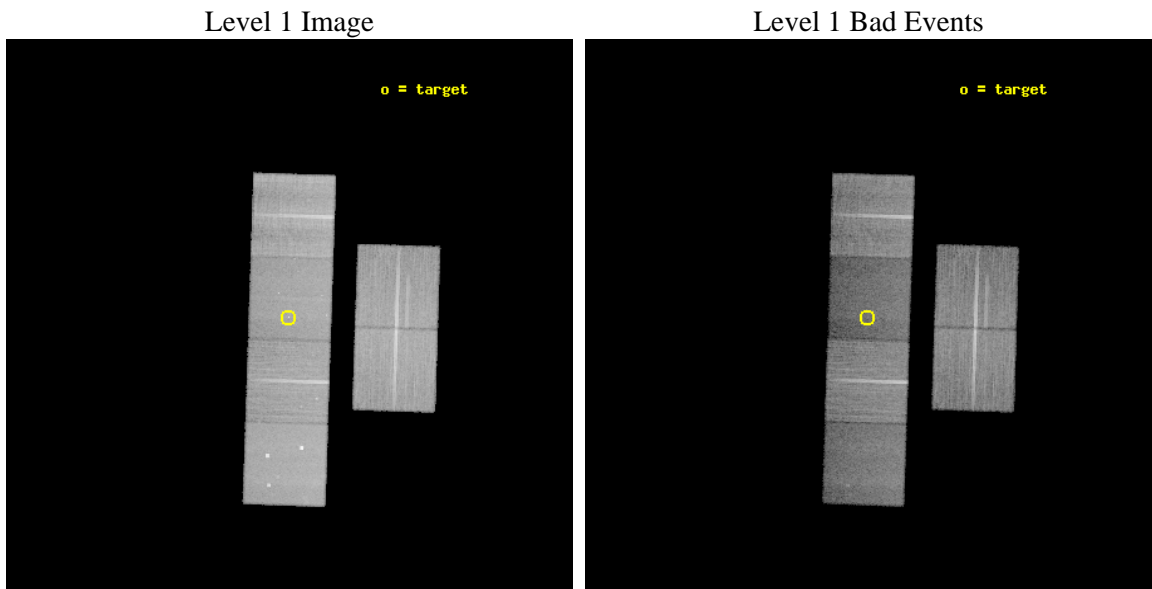
seq_num	500574	Sequence number
obs_id	5585	Observation id
title	X-Ray Counterparts to Neutron Star Bow Shocks	Proposal title
observer	Dr. Shami Chatterjee	Principal investigator
object	PSR J2124-3358	Source name
dtycycle	0	
cycle	P	events from which exps? Prim/Second/Both
ra_targ	321.1825	Observer's specified target RA [deg]
dec_targ	-33.978944	Observer's specified target Dec [deg]
ra_nom	321.18081897465	Nominal RA [deg]
dec_nom	-33.988531523511	Nominal Dec [deg]
roll_nom	271.85118020632	Nominal Roll [deg]
revision	3	Processing version of data
ontime	30156.799887657	Sum of GTIs [s]
livetime	29774.936329235	Livetime [s]
ontime2	30156.799887657	Sum of GTIs [s]
ontime3	30156.799887657	Sum of GTIs [s]
ontime5	30156.799887657	Sum of GTIs [s]
ontime6	30156.799887657	Sum of GTIs [s]
ontime7	30156.799887657	Sum of GTIs [s]
ontime8	30156.799887657	Sum of GTIs [s]
l2events	254333	Number of level 2 events



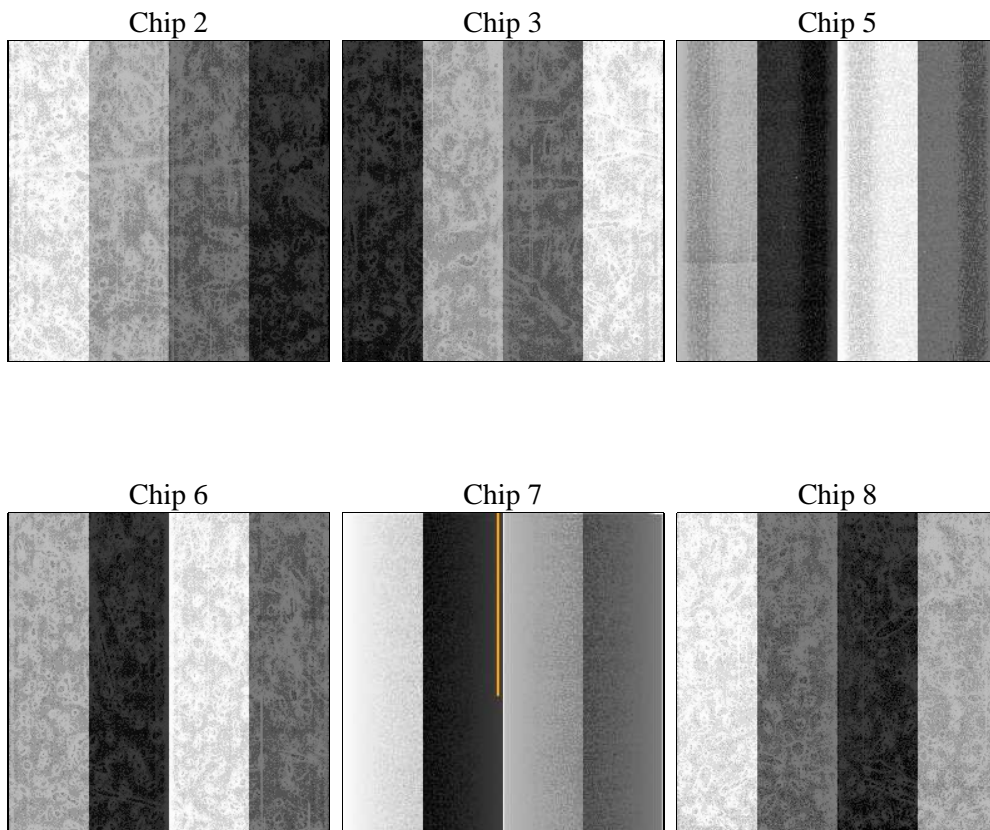
2 OBI

2.1 OBI

2.1.1 Images



2.1.2 Bias



2.1.3 Parameters

obi_num	1	Obi number	sched_exp_time	30000.000000	[s] Scheduled observation exposure time
ascdsver	8.5.1	Processing system revision	ontime	30156.799887657	Sum of GTIs [s]
caldbver	4.5.5	 	ontime2	30156.799887657	Sum of GTIs [s]
date	2012-12-14T21:31:52	Date and time of file creation	ontime3	30156.799887657	Sum of GTIs [s]
revision	3	Processing version of data	ontime5	30156.799887657	Sum of GTIs [s]
			ontime6	30156.799887657	Sum of GTIs [s]
			ontime7	30156.799887657	Sum of GTIs [s]
			ontime8	30156.799887657	Sum of GTIs [s]
			l1events	1213776	Number of level 1 events

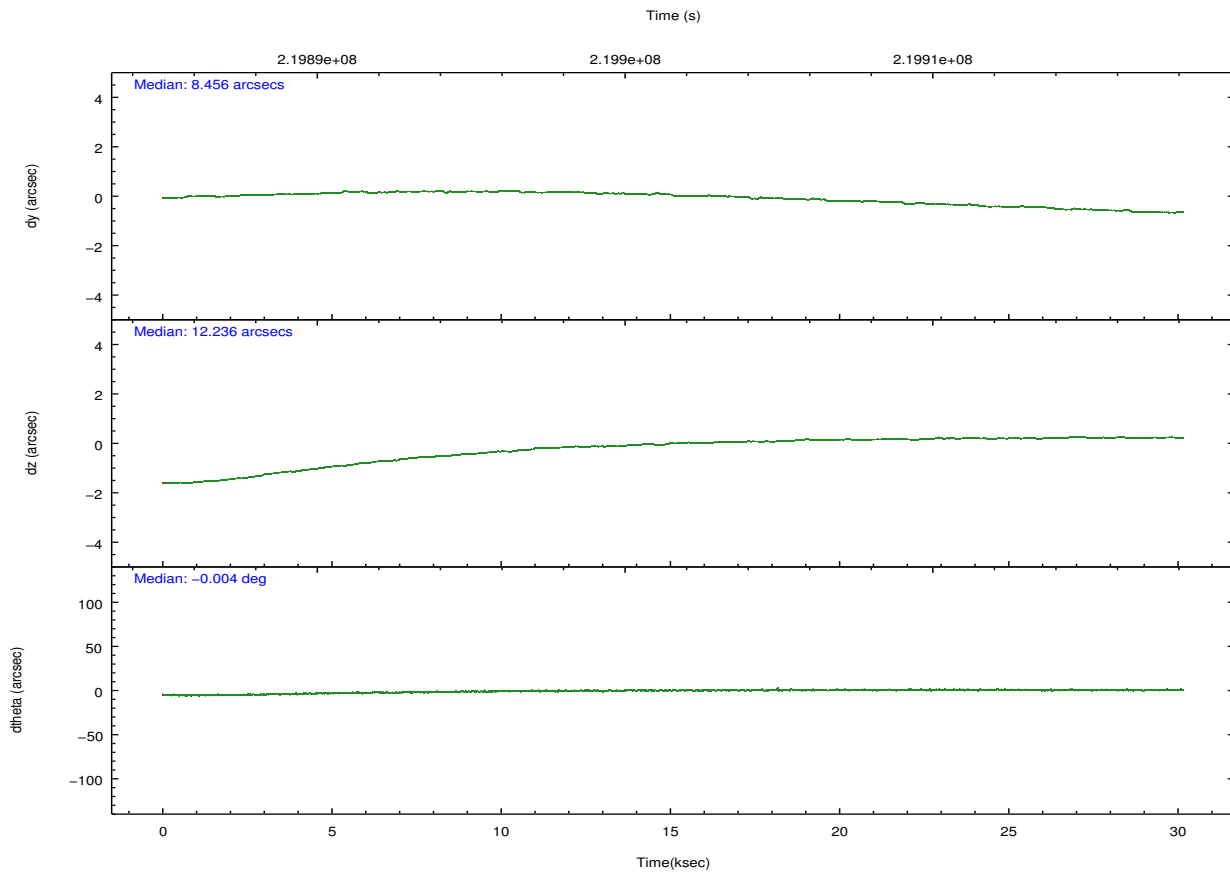
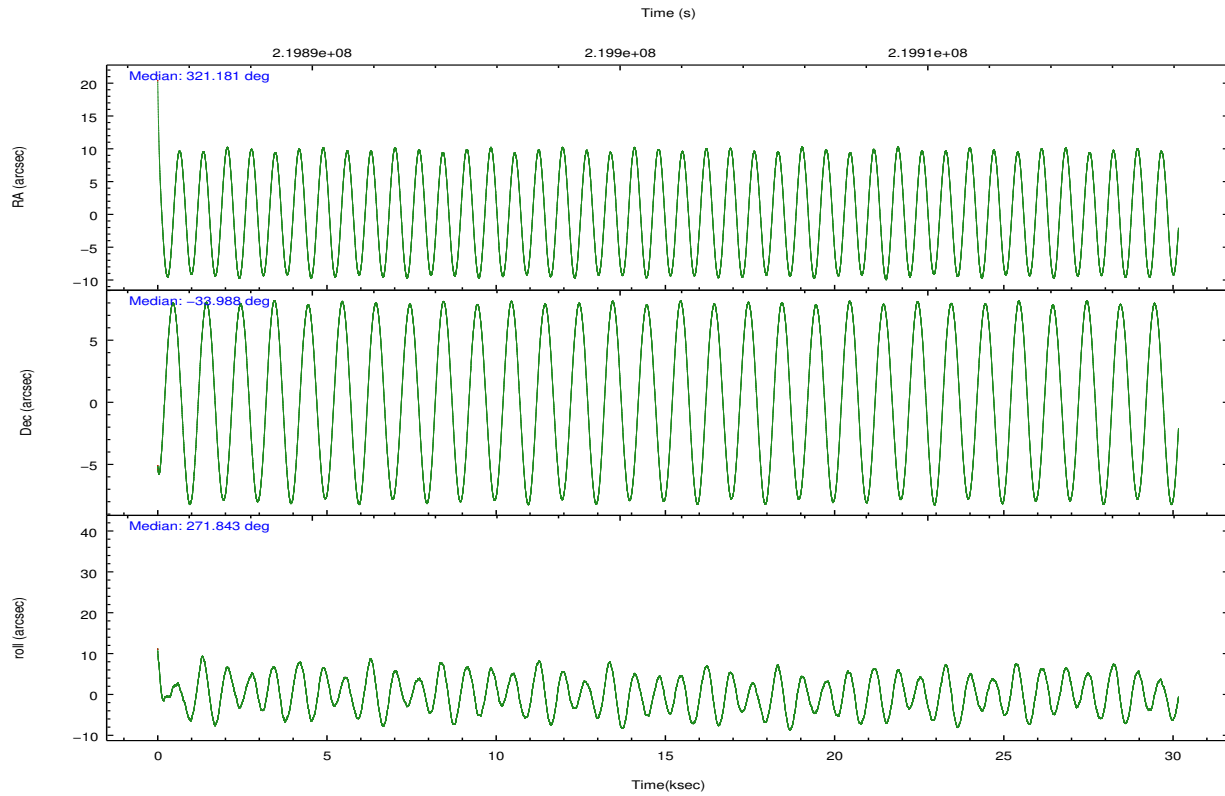
2.1.4 Events

	ccd 2	ccd 3	ccd 5	ccd 6	ccd 7	ccd 8		ccd 2	ccd 3	ccd 5	ccd 6	ccd 7	ccd 8
level 1 events	205724	181837	230341	192734	175310	227830	grade 0 events	6627	5911	17303	7380	8738	15009
rejected events	187883	165549	108296	173566	89463	174693		3%	3%	7%	3%	4%	6%
rejected %	91%	91%	47%	90%	51%	76%	grade 1 events	131	116	434	79	203	152
								0%	0%	0%	0%	0%	0%
							grade 2 events	4276	3428	35328	4019	18191	12305
								2%	1%	15%	2%	10%	5%
							grade 3 events	1950	1931	5423	2091	8453	6210
								0%	1%	2%	1%	4%	2%
							grade 4 events	2021	2027	5406	2101	8460	5805
								0%	1%	2%	1%	4%	2%
							grade 5 events	5292	5957	18595	6441	19030	9232
								2%	3%	8%	3%	10%	4%
							grade 6 events	3143	3174	59865	3788	42880	14339
								1%	1%	25%	1%	24%	6%
							grade 7 events	182284	159293	87987	166835	69355	164778
								88%	87%	38%	86%	39%	72%

2.2 Compared Parameters

Parameter	Planned	Actual	Parameter	Planned	Actual
Instrument	ACIS	ACIS	Obspar format version number	7	7
Detector	ACIS-235678	ACIS-235678	Obspar file type	PREDICTED	ACTUAL
Grating	NONE	NONE	Obspar update status	NONE	UPDATED
Data mode	VFAINT	VFAINT	Number of optional ACIS chips dropped	0	0
Observation mode	POINTING	POINTING	On-chip summing requested	N	N
[deg] Pointing RA	321.163127	321.1808189746495	Subarray requested	NONE	NONE
[deg] Pointing Dec	-33.965582	-33.98853152351052	Alternating exposures requested	N	N
[deg] Pointing Roll	271.684669	271.8511802063167	[s] Primary exposure time	0.000000	3.2
[mm] SIM focus pos	-0.684267	-0.6828225247311905			
[mm] SIM defocus	0	0.001444936568705701			
[mm] SIM translation stage pos	-190.132523	-190.1425803651734			
[mm] SIM translation stage offset	0	0.01005778216563158			
[s] Observation start time (MET)	219886640.184000	219885430.06518			
Observation start date	2004-12-19T23:36:16	2004-12-19T23:17:10			
[s] Observation end time (MET)	219916640.184000	219917340.36662			
Observation end date	2004-12-20T07:56:16	2004-12-20T08:09:00			
Read mode	TIMED	TIMED			

2.3 Aspect

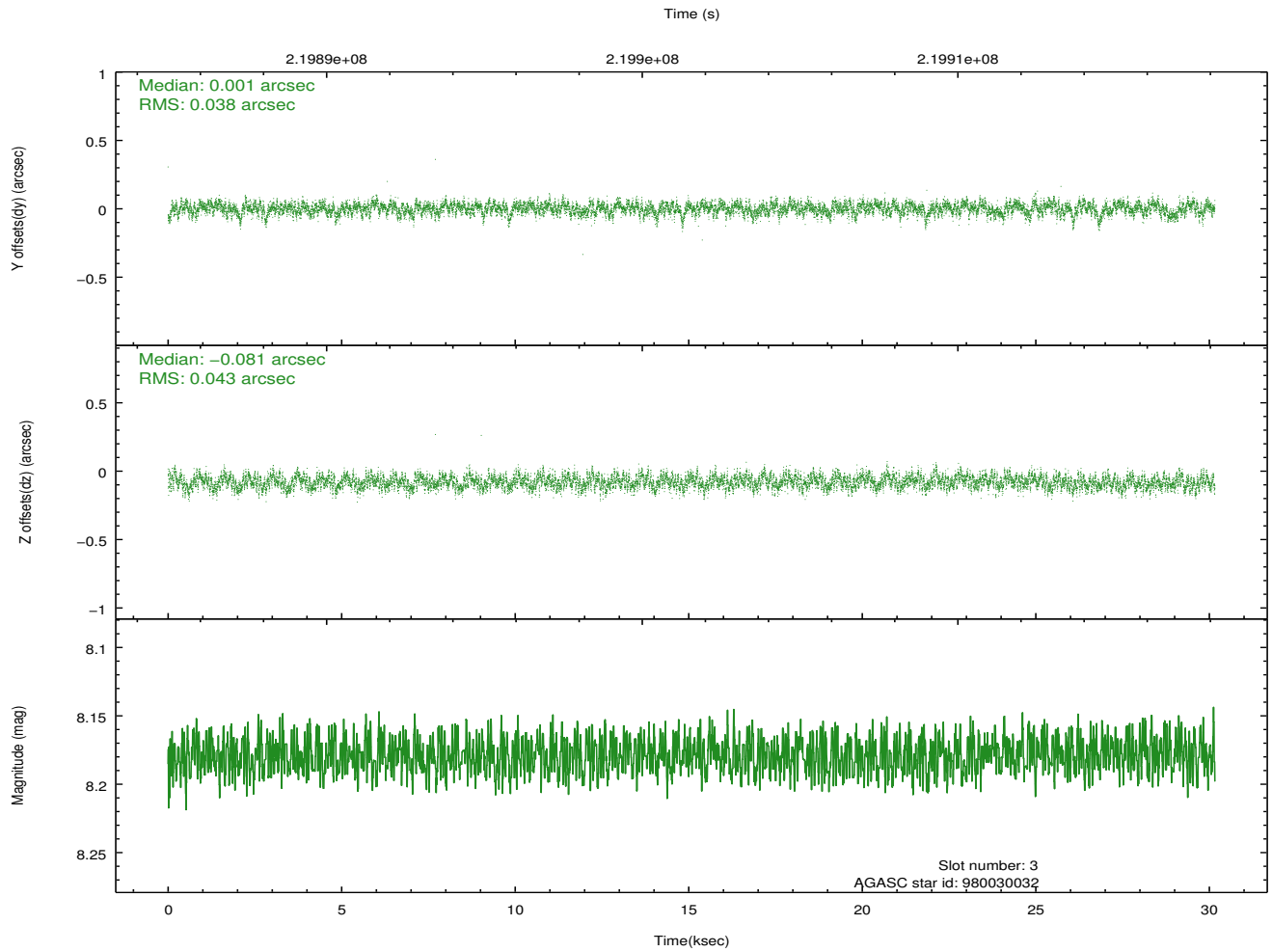
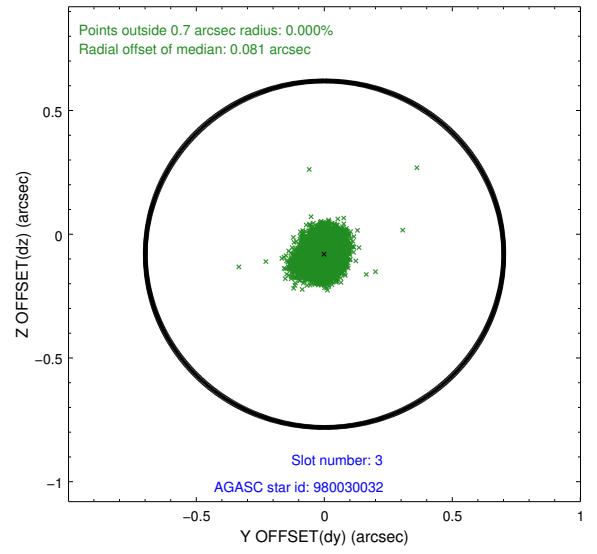
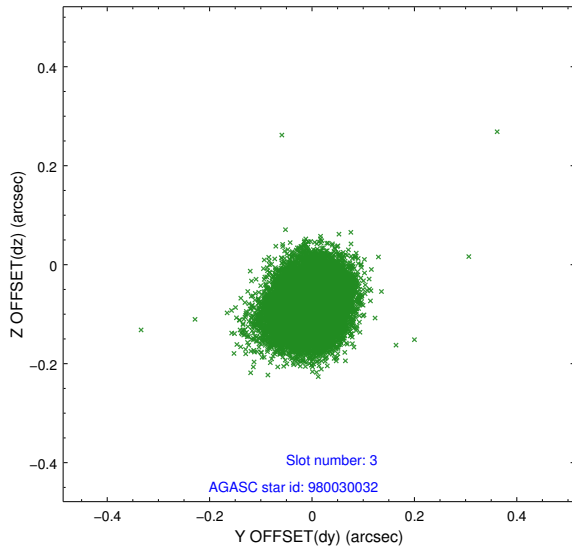


Slot Statistics

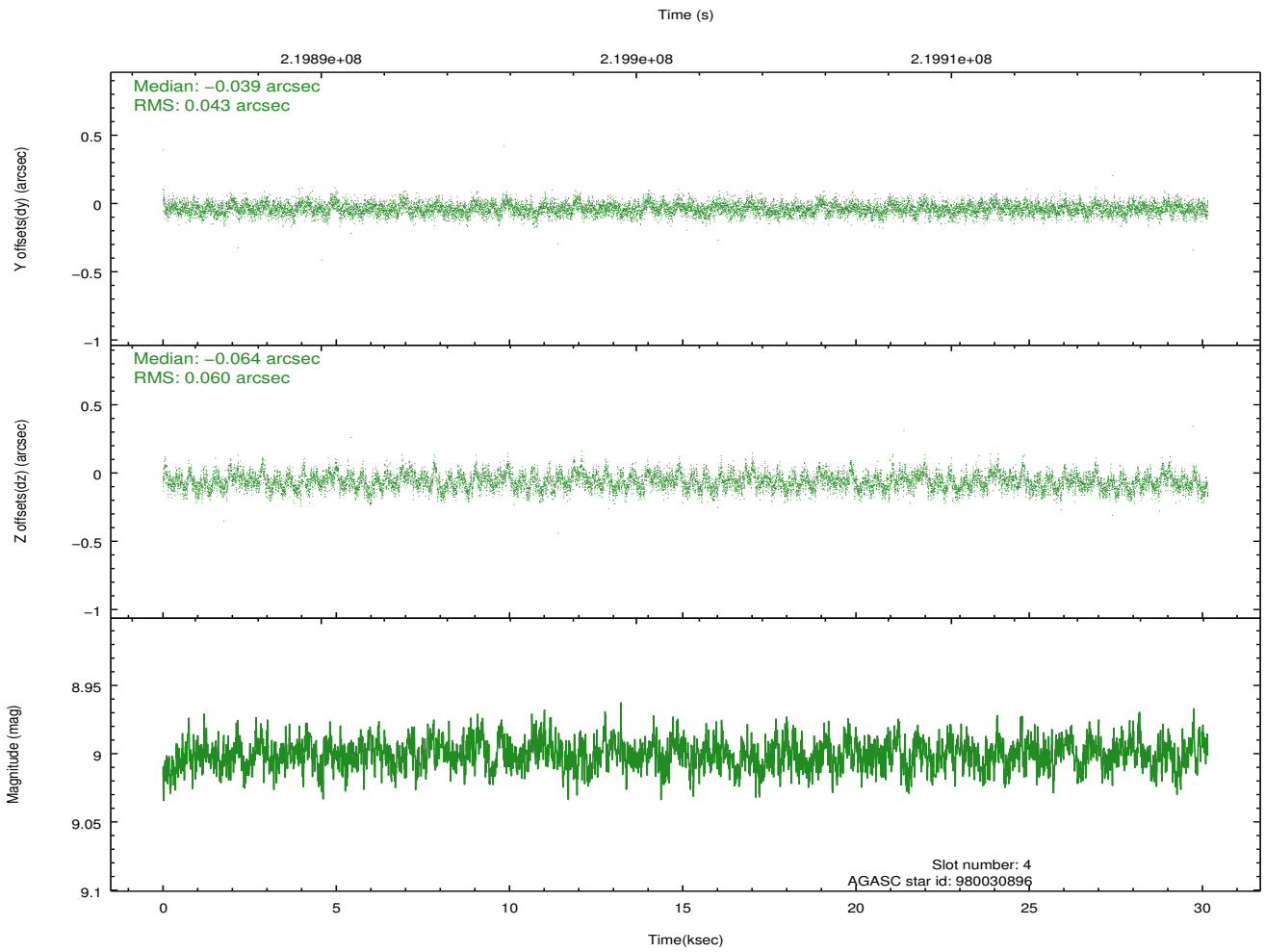
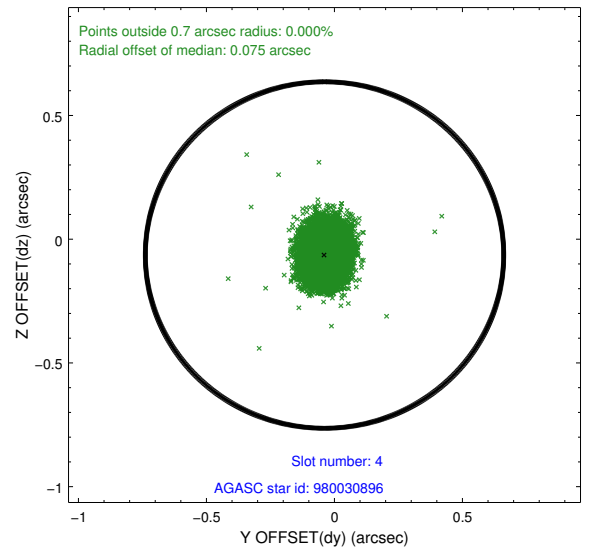
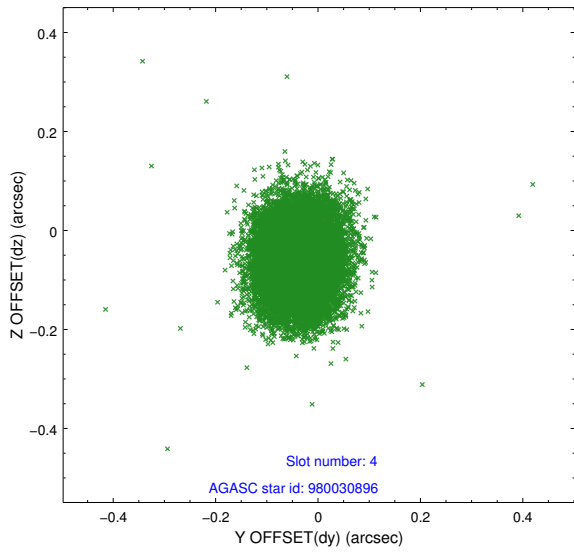
slot	status	id	mag	n_pts	med_dy	med_dz	dr1	dr2	ra	dec	mean_y	mean_z
0	FID	ACIS-S-2	7.10	7355	-0.011	-0.024	0.016	0.030	0.000000	0.000000	-761.16	-1733.24
1	FID	ACIS-S-4	7.20	7357	0.098	0.013	0.016	0.026	0.000000	0.000000	2152.19	175.21
2	FID	ACIS-S-5	7.23	7357	-0.115	0.023	0.016	0.026	0.000000	0.000000	-1814.01	168.96
3	GUIDE	980030032	8.18	14712	0.001	-0.081	0.061	0.098	320.713209	-33.668222	-1106.17	-1315.95
4	GUIDE	980030896	9.00	14707	-0.039	-0.064	0.077	0.127	320.885774	-33.670997	-1083.16	-798.74
5	GUIDE	980553736	8.77	14710	0.067	0.056	0.068	0.109	321.725540	-33.909896	-146.31	1685.59
6	GUIDE	980554264	9.26	14711	0.040	0.011	0.085	0.138	321.363795	-33.990137	106.82	596.50
7	GUIDE	980161800	9.63	14698	-0.078	0.077	0.128	0.208	321.947904	-33.438617	-1817.94	2412.29

2.4 Star Slots

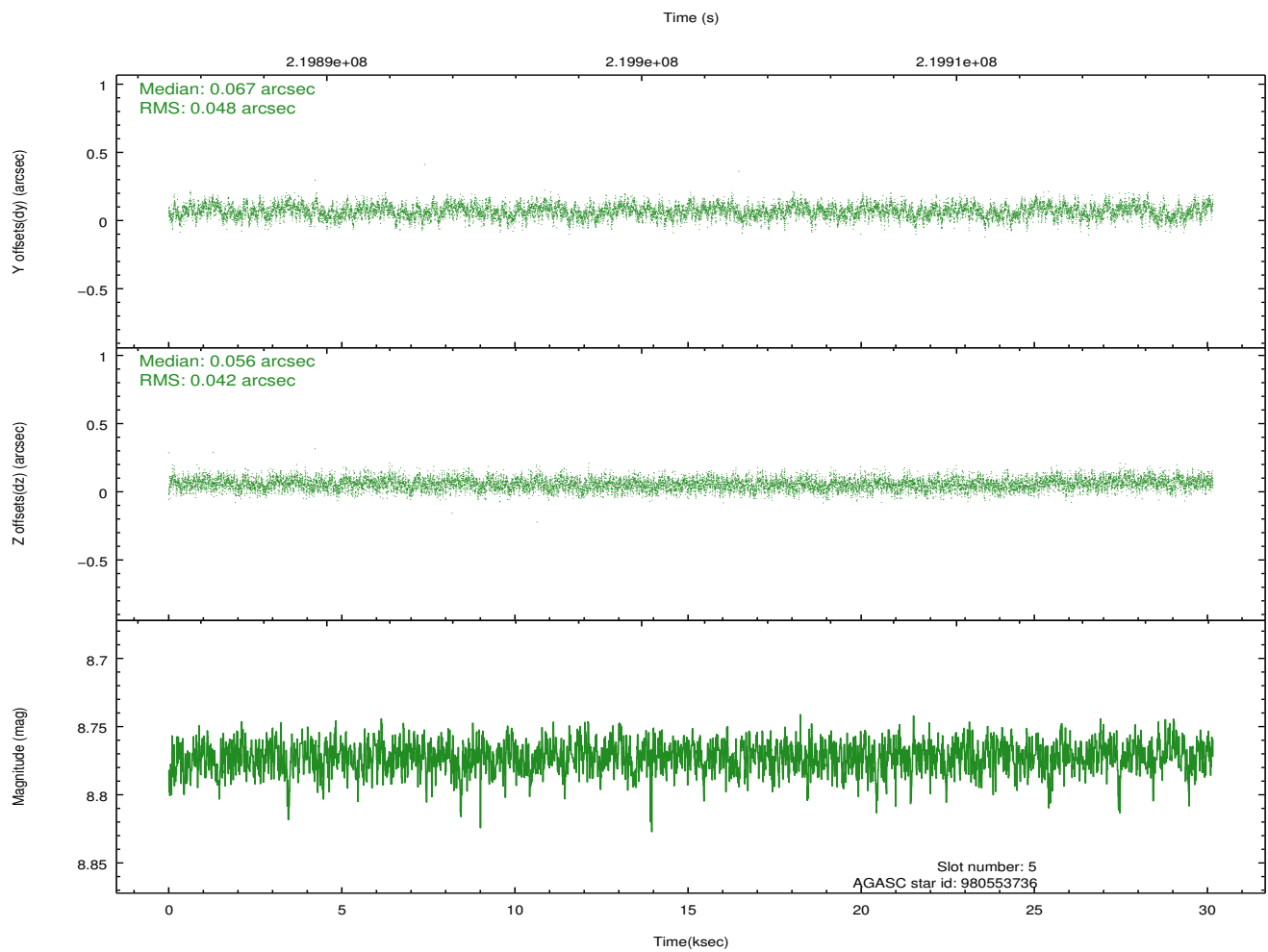
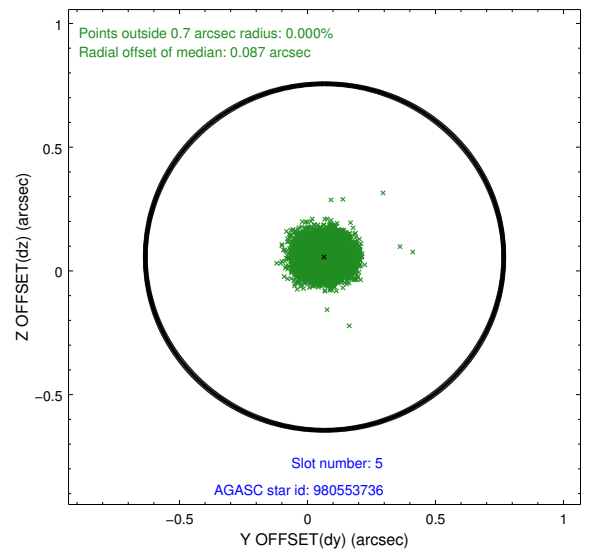
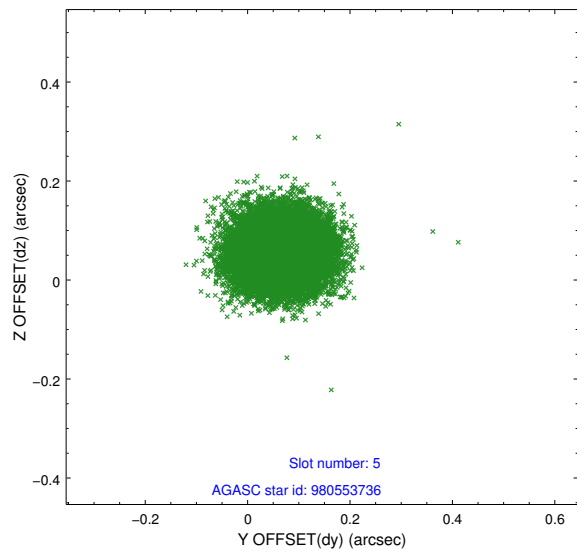
2.4.1 Slot 3



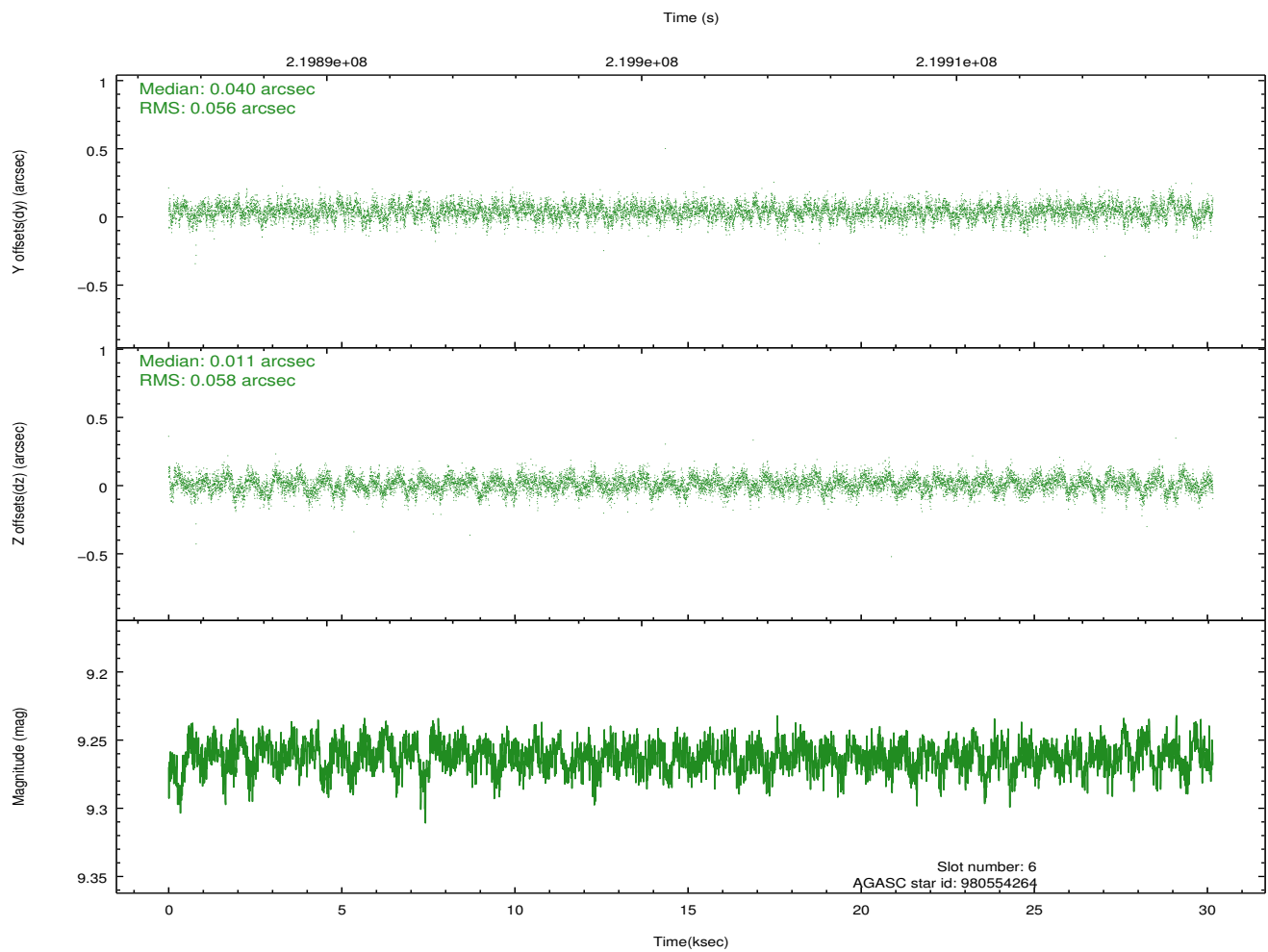
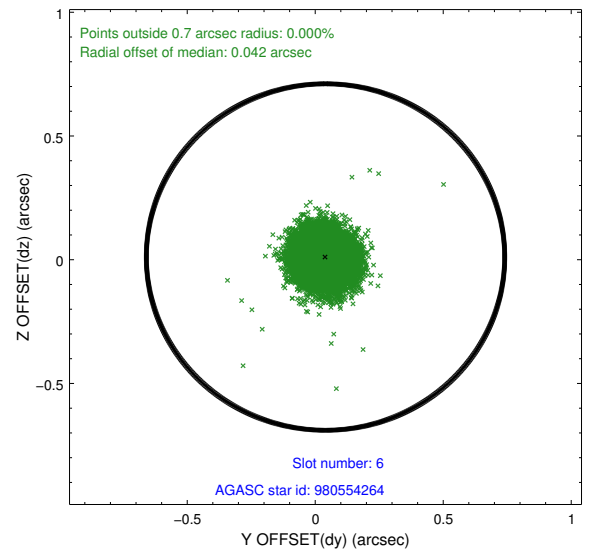
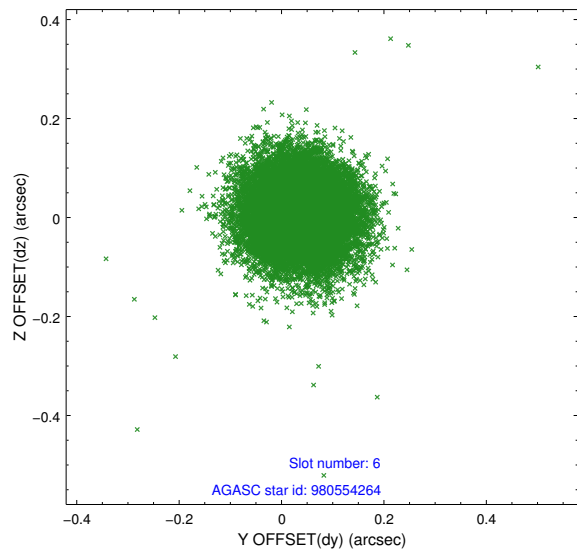
2.4.2 Slot 4



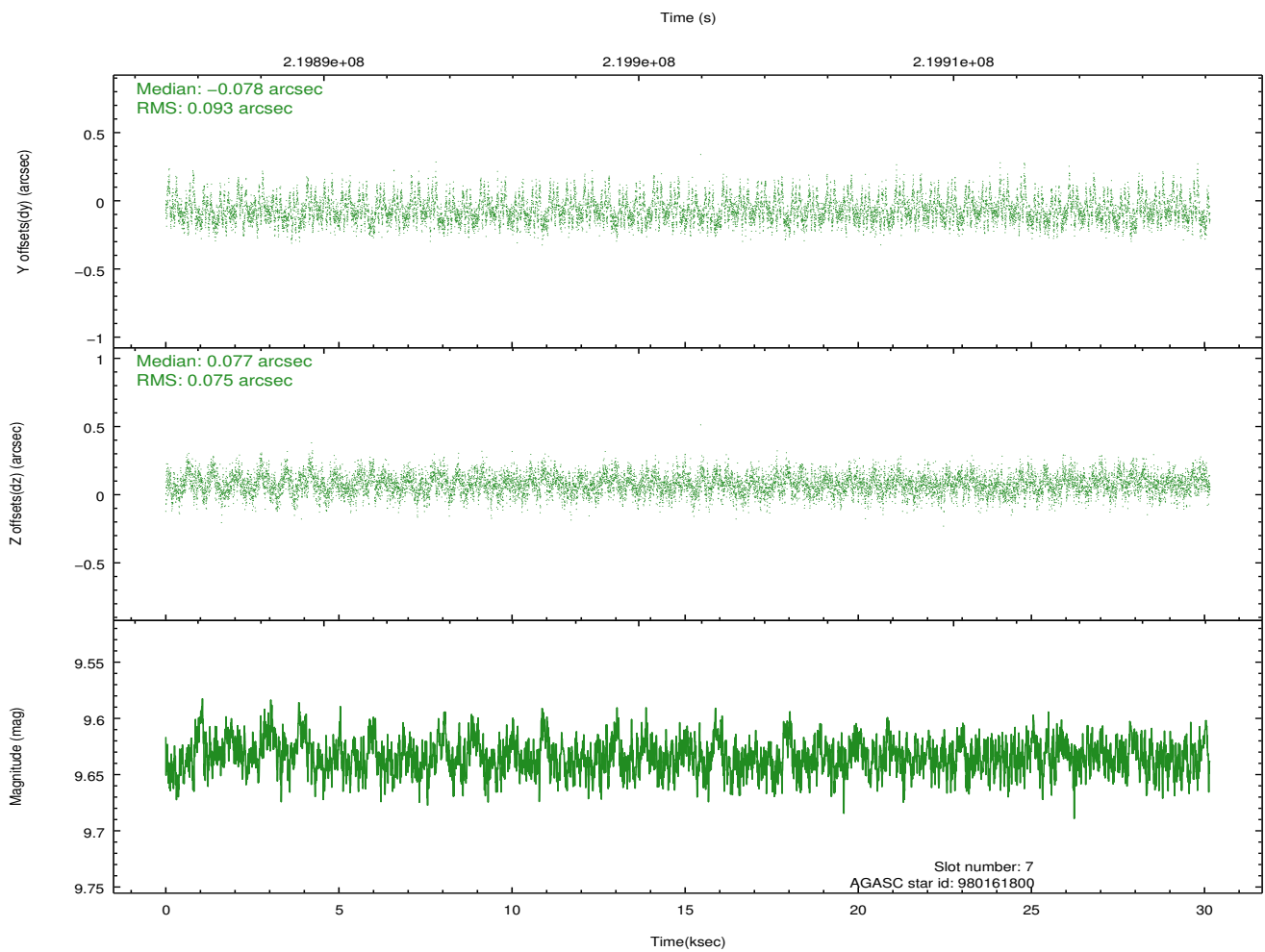
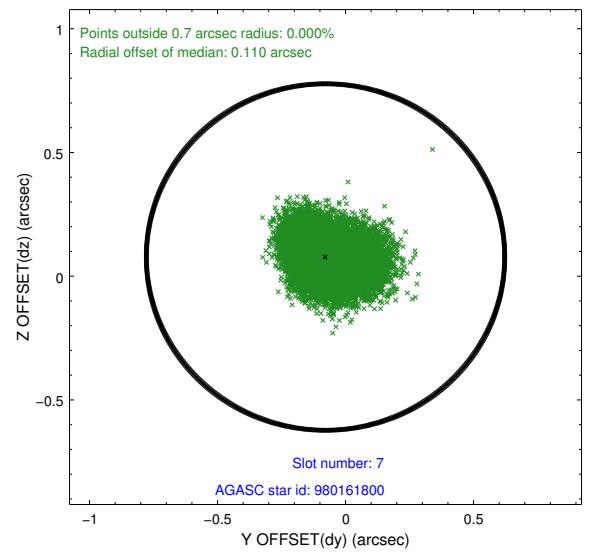
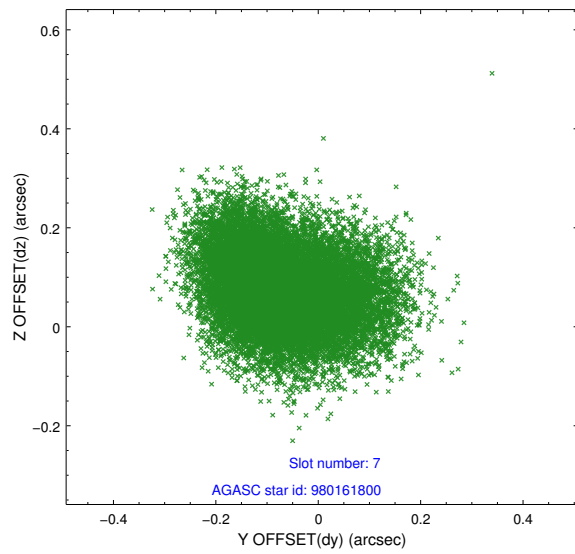
2.4.3 Slot 5



2.4.4 Slot 6

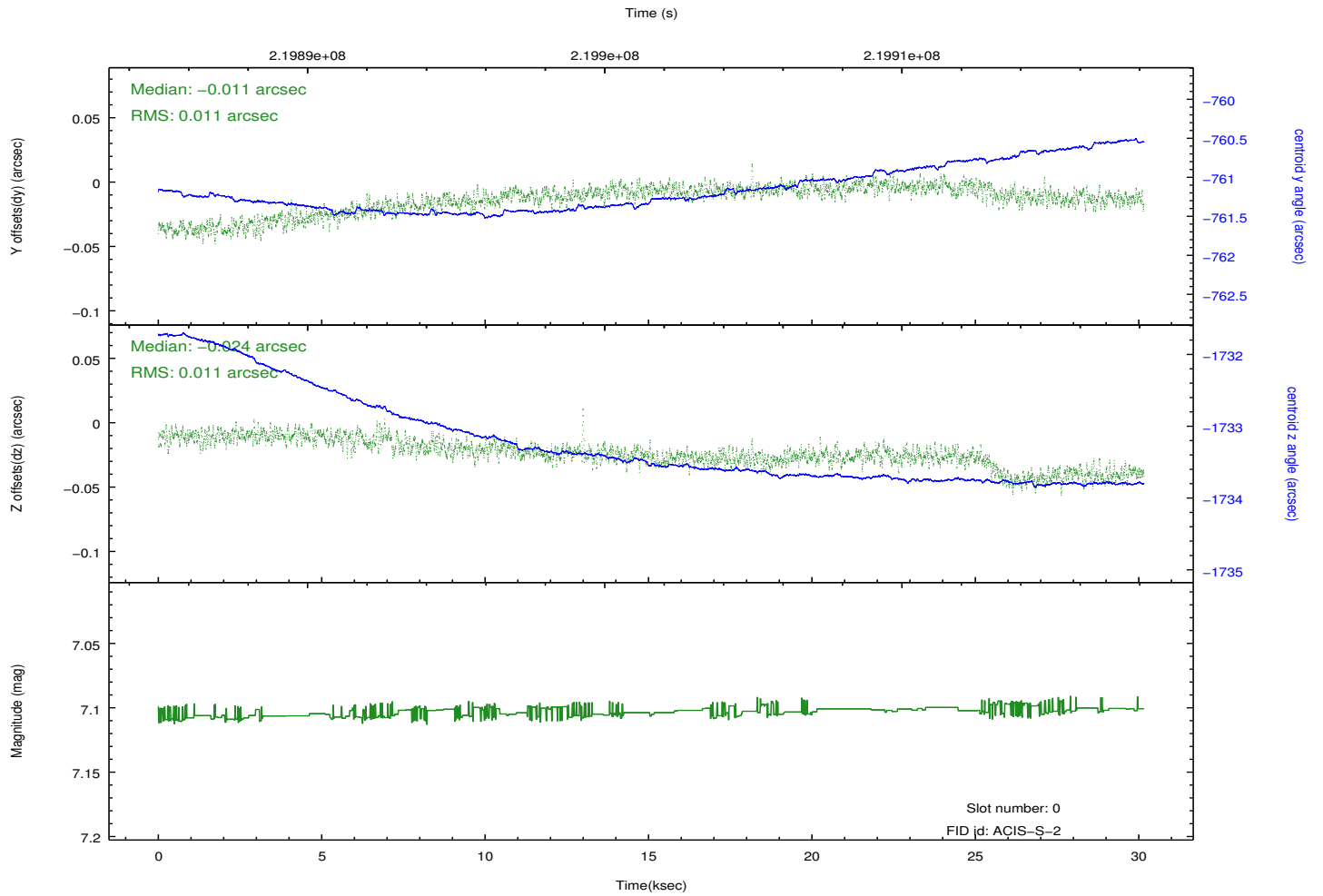
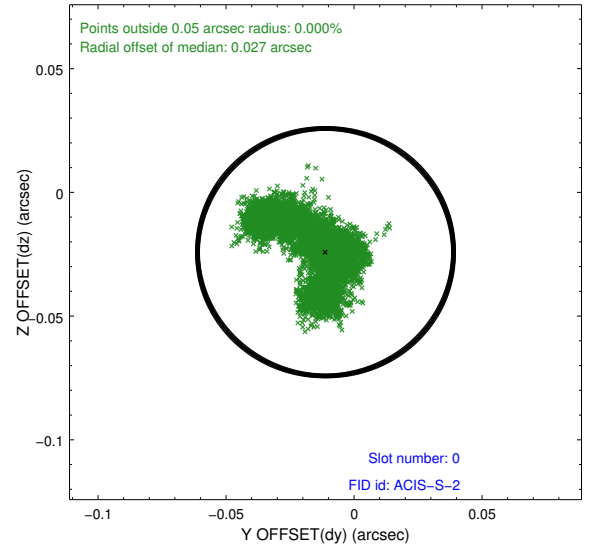
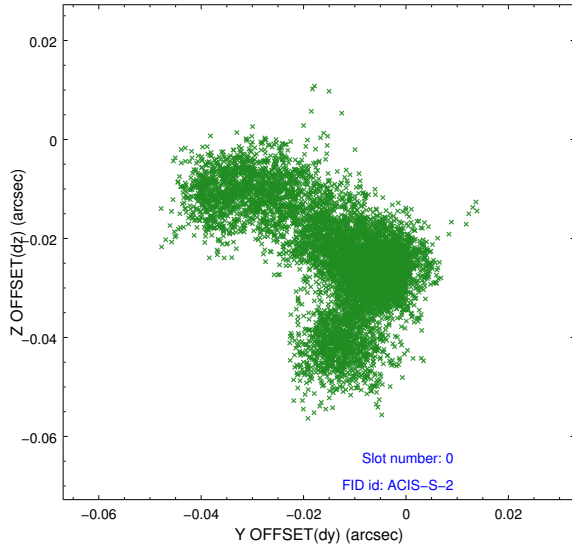


2.4.5 Slot 7

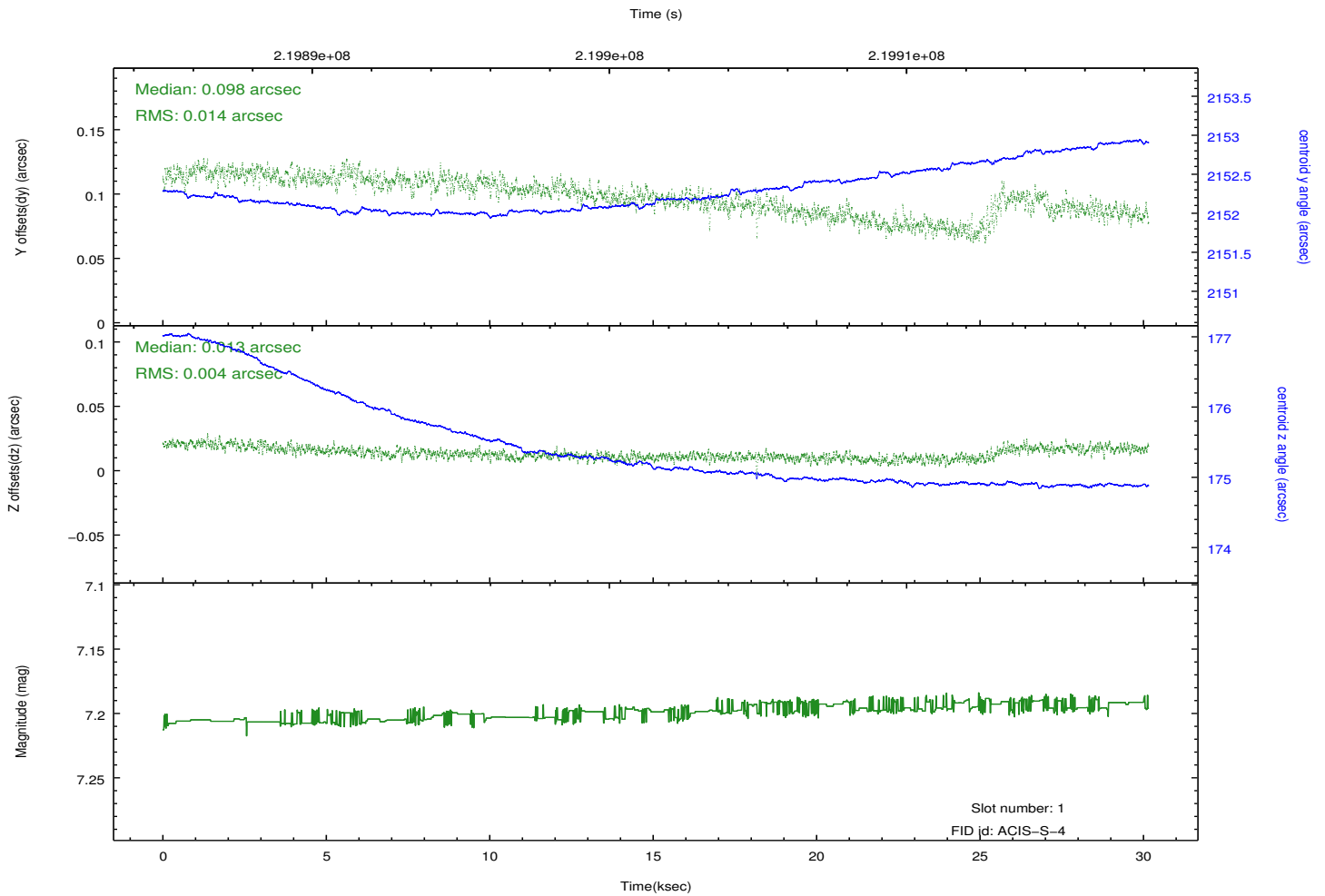
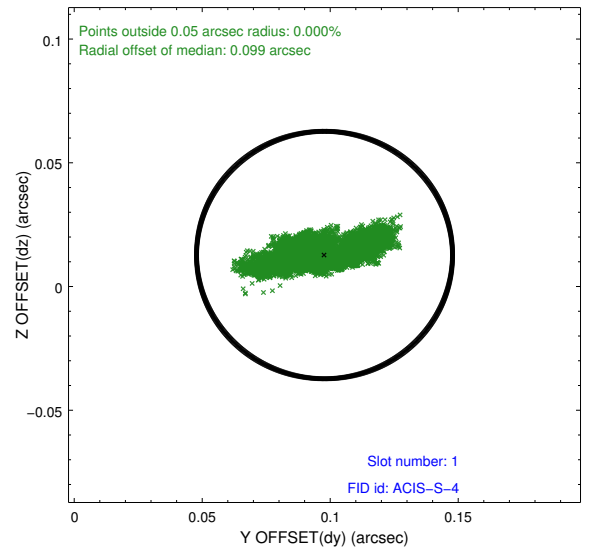
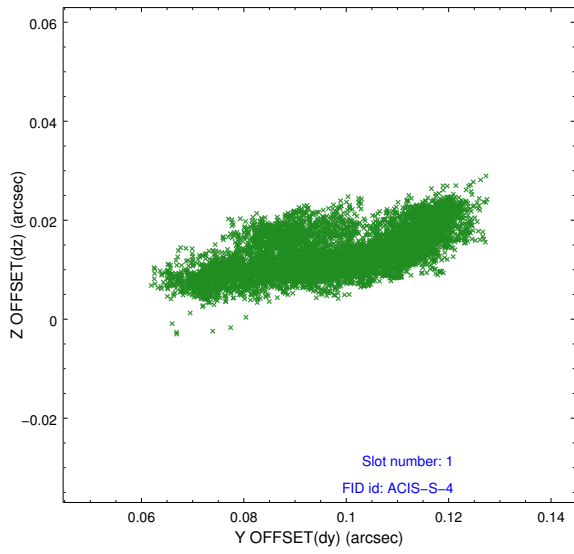


2.5 FID Slots

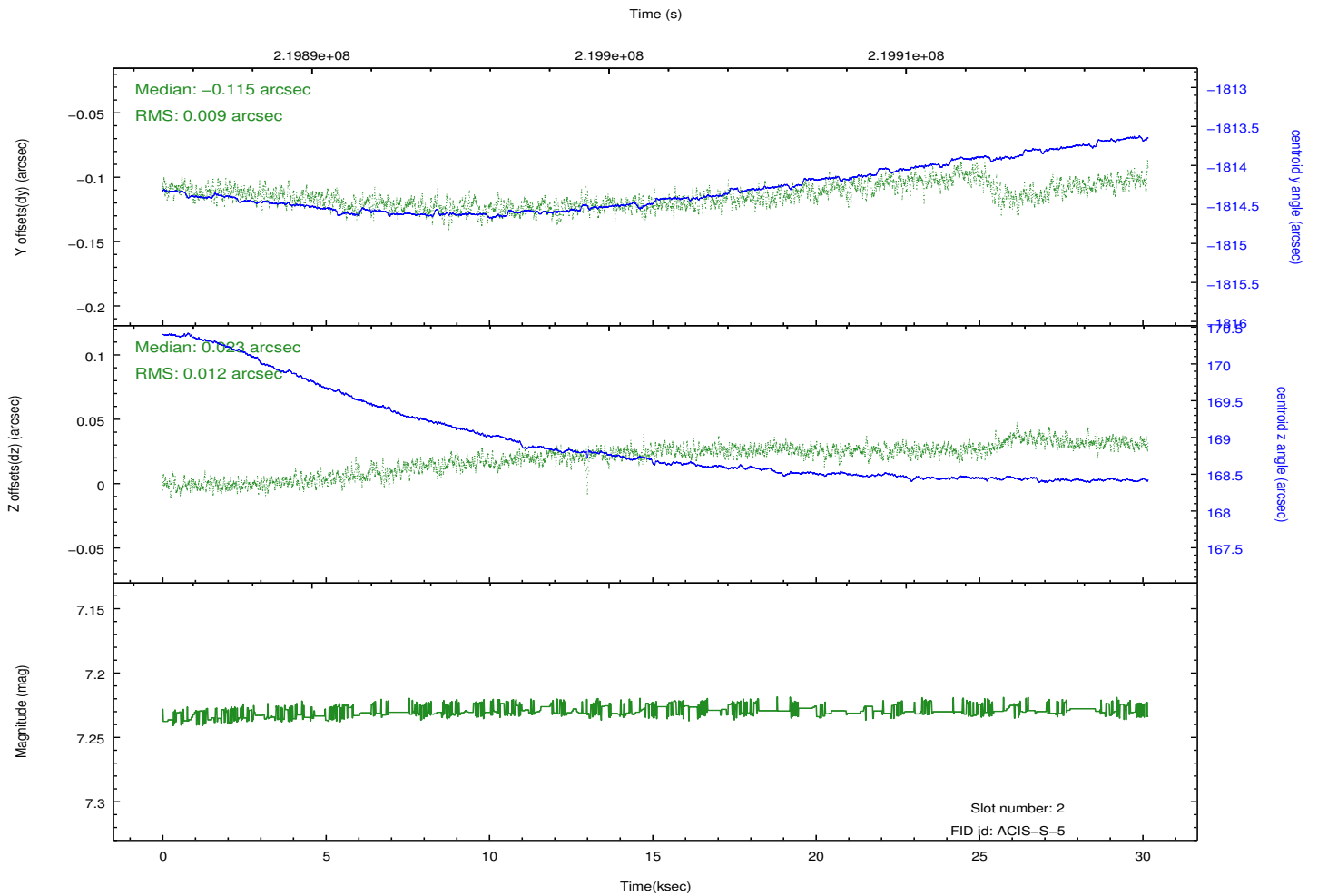
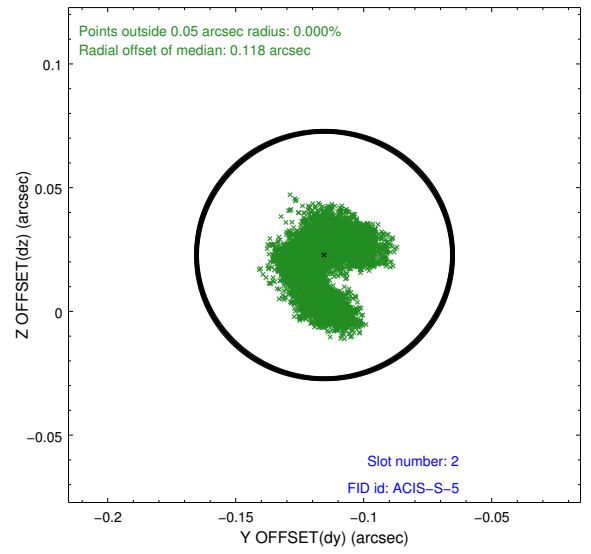
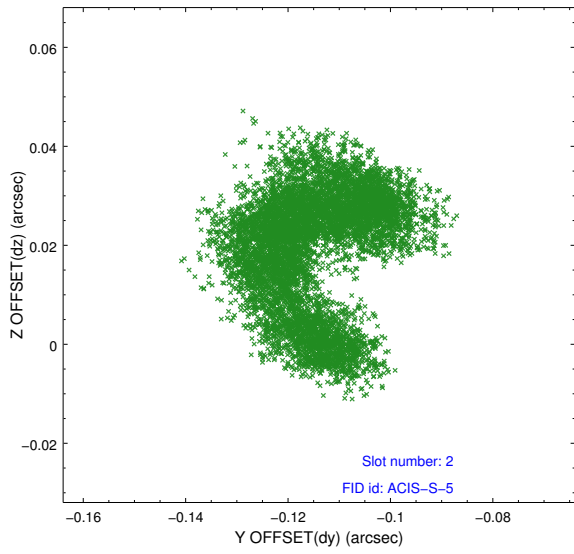
2.5.1 Slot 0



2.5.2 Slot 1



2.5.3 Slot 2



A Summary

A.1 Status

V&V Scientist	Jen Lauer
V&V Date (YYYY-MM-DD)	2013.01.04
V&V Edition	1
V&V Disposition and Status	OK
V&V Charge Time	30.15679

A.2 Comments