

V&V Reference Report

L2 ASCDS Version : 8.4.5

Observation 56185 - L2 Version 2
Chandra X-Ray Center

L2 Processing Date : Jun 28 2012

Contents

1	Front	2
2	OBI	3
2.1	OBI	3
2.1.1	Images	3
2.1.2	Bias	3
2.1.3	Parameters	4
2.1.4	Events	4
2.2	Compared Parameters	5
2.3	Star Slots	6
2.4	FID Slots	6
A	Summary	7
A.1	Status	7
A.2	Comments	7

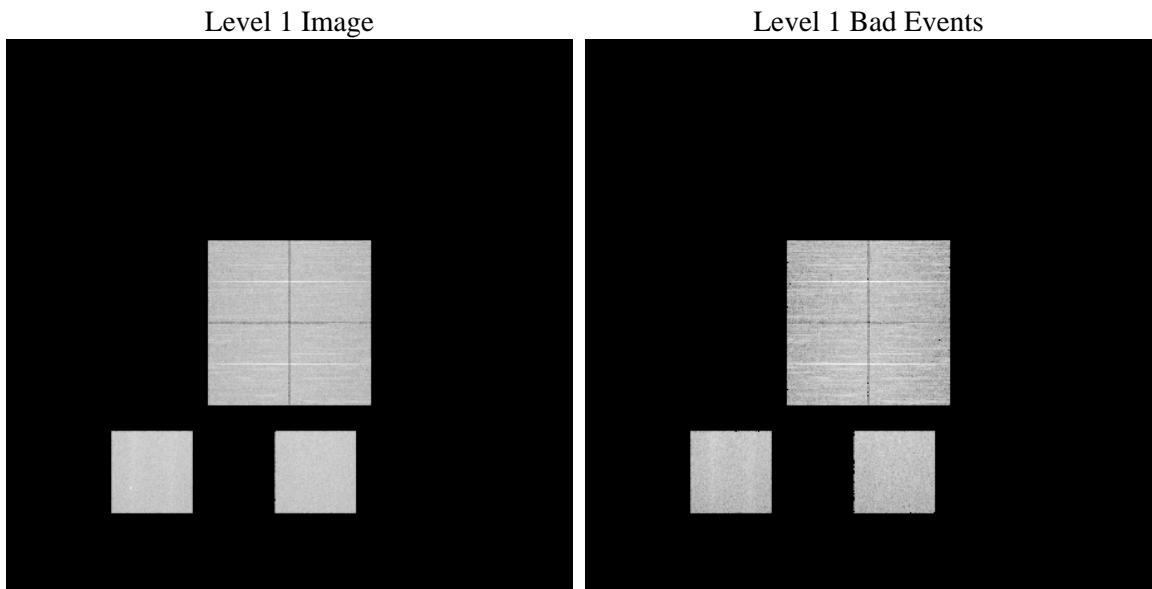
1 Front

seq_num	 	Sequence number
obs_id	56185	Observation id
title	ACIS-012357 diagnostics	Proposal title
observer	CHANDRA engineering request/realtime commanding	Principal investig
object	 	Source name
dtycycle	0	
cycle	P	events from which exps? Prim/Second/Both
ra_targ	0.0	Observer's specified target RA [deg]
dec_targ	0.0	Observer's specified target Dec [deg]
ra_nom	284.00375362733	Nominal RA [deg]
dec_nom	-40.471411478388	Nominal Dec [deg]
roll_nom	51.182948764927	Nominal Roll [deg]
revision	2	Processing version of data
ontime	8275.1999692321	Sum of GTIs [s]
livetime	8170.4144044945	Livetime [s]
ontime0	8275.1999692321	Sum of GTIs [s]
ontime1	8275.1999692321	Sum of GTIs [s]
ontime2	8275.1999692321	Sum of GTIs [s]
ontime3	8275.1999692321	Sum of GTIs [s]
ontime5	8275.1999692321	Sum of GTIs [s]
ontime7	8275.1999692321	Sum of GTIs [s]
l2events	412827	Number of level 2 events

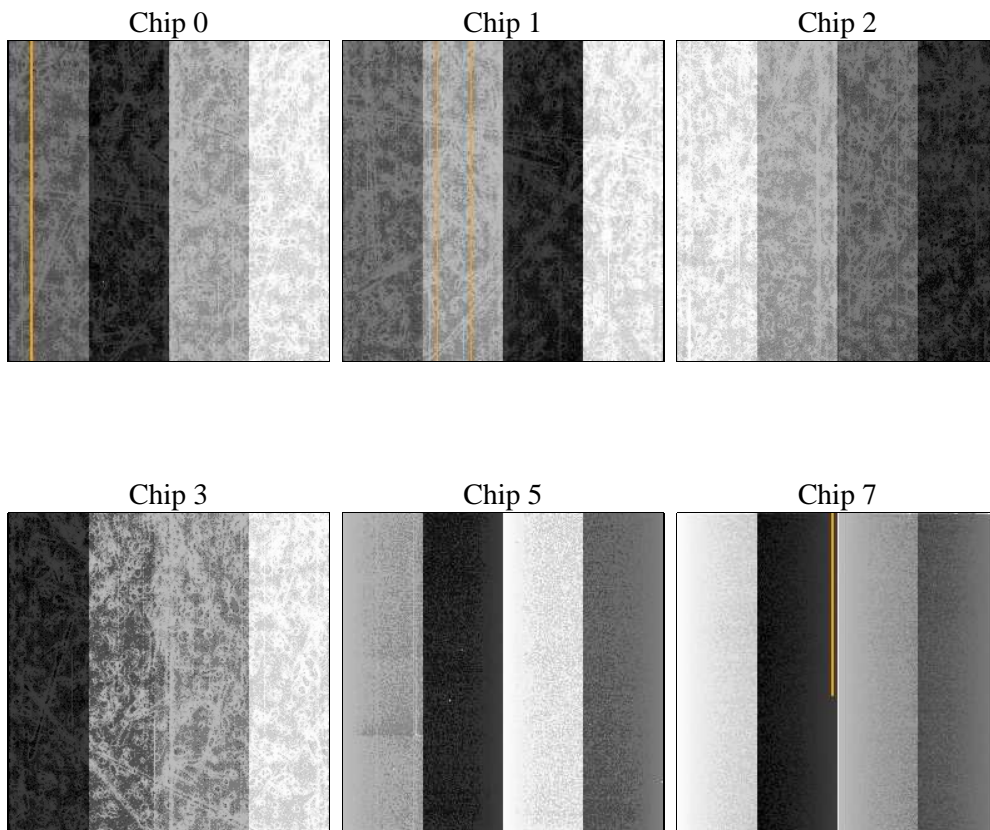
2 OBI

2.1 OBI

2.1.1 Images



2.1.2 Bias



2.1.3 Parameters

obi_num	0	Obi number	sched_exp_time	0.0	[s] Scheduled observation exposure time
ascdsver	8.4.5	Processing system revision	ontime	8275.1999692321	Sum of GTIs [s]
caldbver	4.5.0	 	ontime0	8275.1999692321	Sum of GTIs [s]
date	2012-06-28T20:23:06	Date and time of file creation	ontime1	8275.1999692321	Sum of GTIs [s]
revision	2	Processing version of data	ontime2	8275.1999692321	Sum of GTIs [s]
			ontime3	8275.1999692321	Sum of GTIs [s]
			ontime5	8275.1999692321	Sum of GTIs [s]
			ontime7	8275.1999692321	Sum of GTIs [s]
			l1events	841342	Number of level 1 events

2.1.4 Events

	ccd 0	ccd 1	ccd 2	ccd 3	ccd 5	ccd 7		ccd 0	ccd 1	ccd 2	ccd 3	ccd 5	ccd 7
level 1 events	126589	125771	132828	130401	164700	161053	grade 0 events	32129	30074	33035	33066	9597	15823
rejected events	65883	64836	72091	69600	69481	66362		25%	23%	24%	25%	5%	9%
rejected %	52%	51%	54%	53%	42%	41%	grade 1 events	201	170	256	238	221	141
								0%	0%	0%	0%	0%	0%
							grade 2 events	11191	13043	10343	10455	35887	21206
								8%	10%	7%	8%	21%	13%
							grade 3 events	4041	3858	4138	4114	3519	8279
								3%	3%	3%	3%	2%	5%
							grade 4 events	4041	3808	4152	4094	3131	7680
								3%	3%	3%	3%	1%	4%
							grade 5 events	3698	3614	3418	4069	7892	9858
								2%	2%	2%	3%	4%	6%
							grade 6 events	9323	10178	9098	9072	43116	41735
								7%	8%	6%	6%	26%	25%
							grade 7 events	61965	61026	68388	65293	61337	56331
								48%	48%	51%	50%	37%	34%

2.2 Compared Parameters

Parameter	Planned	Actual	Parameter	Planned	Actual
Instrument	ACIS	ACIS	Obspar format version number	7	7
Detector	ACIS-012357	ACIS-012357	Obspar file type	PREDICTED	ACTUAL
Grating	NONE	NONE	Obspar update status	NONE	UPDATED
Data mode	FAINT	FAINT	Number of optional ACIS chips dropped	0	0
Observation mode	SECONDARY	SECONDARY	On-chip summing requested	N	N
[deg] Pointing RA	0	284.003753627331	Subarray requested	NONE	NONE
[deg] Pointing Dec	0	-40.47141147838818	Alternating exposures requested	N	N
[deg] Pointing Roll	0.0	51.18294876492683	[s] Primary exposure time	3.2	3.2
[mm] SIM focus pos	-1.429586	-1.428180813131781			
[mm] SIM defocus	0.1037507710433287	0.1051558262725154			
[mm] SIM translation stage pos	250.455976	250.466033080201			
[mm] SIM translation stage offset	0	-0.01005468664627074			
[s] Observation start time (MET)	392995370.125475	392995369.10048			
Observation start date	2010-06-15T13:22:50	2010-06-15T13:22:49			
[s] Observation end time (MET)	393005548.375994	393005547.351			
Observation end date	2010-06-15T16:12:28	2010-06-15T16:12:27			
Read mode	TIMED	TIMED			

2.3 Star Slots

2.4 FID Slots

A Summary

A.1 Status

V&V Scientist	Jen Lauer
V&V Date (YYYY-MM-DD)	2012.07.05
V&V Edition	1
V&V Disposition and Status	OK
V&V Charge Time	8.2751999692321

A.2 Comments