

# V&V Reference Report

## L2 ASCDS Version : 8.4.4

Observation 57505 - L2 Version 3  
Chandra X-Ray Center

L2 Processing Date : May 24 2012

## Contents

<b>1</b>	<b>Front</b>	<b>2</b>
<b>2</b>	<b>OBI</b>	<b>3</b>
2.1	OBI . . . . .	3
2.1.1	Images . . . . .	3
2.1.2	Bias . . . . .	3
2.1.3	Parameters . . . . .	4
2.1.4	Events . . . . .	4
2.2	Compared Parameters . . . . .	5
2.3	Star Slots . . . . .	6
2.4	FID Slots . . . . .	6
<b>A</b>	<b>Summary</b>	<b>7</b>
A.1	Status . . . . .	7
A.2	Comments . . . . .	7

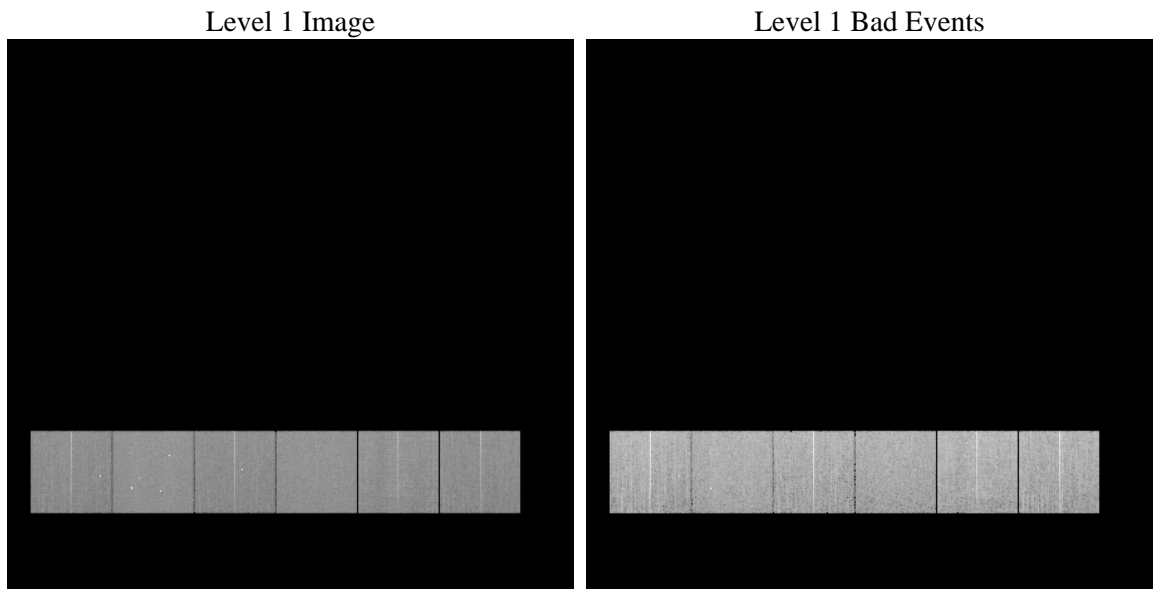
# 1 Front

seq_num	&#160	Sequence number
obs_id	57505	Observation id
title	ACIS-456789 diagnostics	Proposal title
observer	CHANDRA engineering request/realtime commanding	Principal investig
object	&#160	Source name
dtycycle	0	&#160
cycle	P	events from which exps? Prim/Second/Both
ra_targ	0.0	Observer's specified target RA [deg]
dec_targ	0.0	Observer's specified target Dec [deg]
ra_nom	71.966405072518	Nominal RA [deg]
dec_nom	36.009550556961	Nominal Dec [deg]
roll_nom	127.76586990333	Nominal Roll [deg]
revision	3	Processing version of data
ontime	7702.3999713659	Sum of GTIs [s]
livetime	7604.8675451	Livetime [s]
ontime4	7702.3999713659	Sum of GTIs [s]
ontime5	7702.3999713659	Sum of GTIs [s]
ontime6	7702.3999713659	Sum of GTIs [s]
ontime7	7702.3999713659	Sum of GTIs [s]
ontime8	7702.3999713659	Sum of GTIs [s]
ontime9	7702.3999713659	Sum of GTIs [s]
l2events	527642	Number of level 2 events

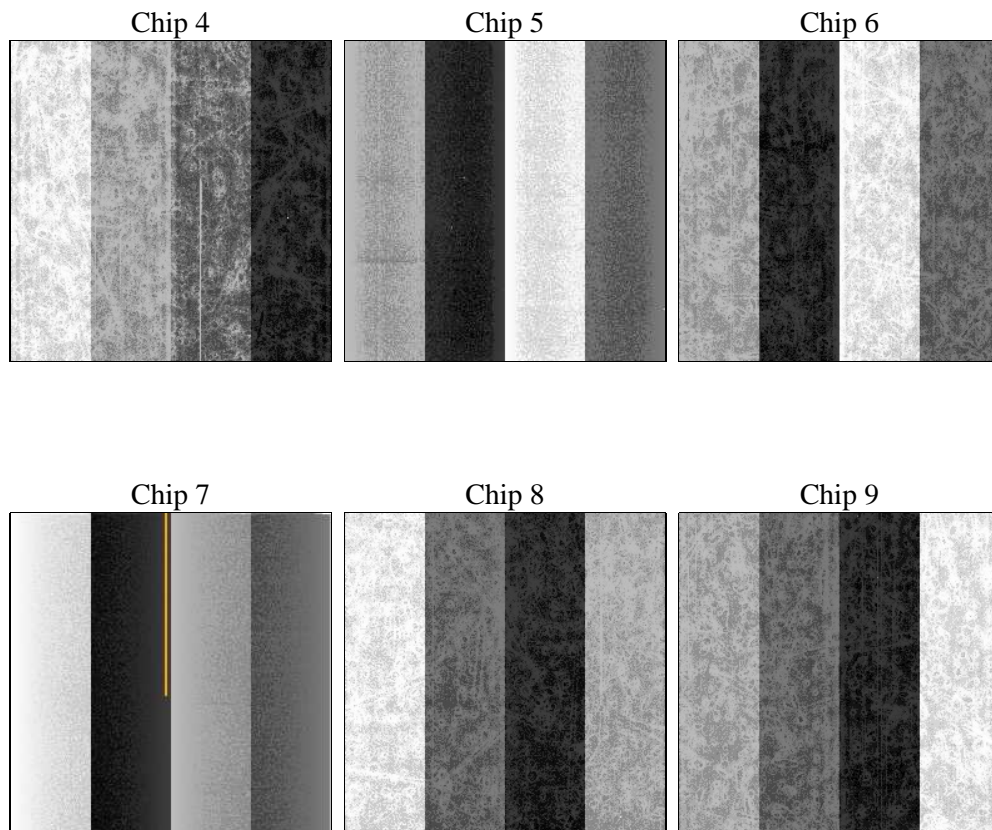
## 2 OBI

### 2.1 OBI

#### 2.1.1 Images



#### 2.1.2 Bias



### 2.1.3 Parameters

obi_num	0	Obi number	sched_exp_time	7320	[s] Scheduled observation exposure time
ascdsver	8.4.4	Processing system revision	ontime	7702.3999713659	Sum of GTIs [s]
caldbver	4.4.9	&#160	ontime4	7702.3999713659	Sum of GTIs [s]
date	2012-05-24T04:31:45	Date and time of file creation	ontime5	7702.3999713659	Sum of GTIs [s]
revision	3	Processing version of data	ontime6	7702.3999713659	Sum of GTIs [s]
			ontime7	7702.3999713659	Sum of GTIs [s]
			ontime8	7702.3999713659	Sum of GTIs [s]
			ontime9	7702.3999713659	Sum of GTIs [s]
			l1events	1029427	Number of level 1 events

### 2.1.4 Events

	ccd 4	ccd 5	ccd 6	ccd 7	ccd 8	ccd 9		ccd 4	ccd 5	ccd 6	ccd 7	ccd 8	ccd 9
level 1 events	159945	190520	158674	182049	179417	158822	grade 0 events	47519	20985	44699	22611	49044	44458
rejected events	79671	71172	73632	66291	83267	76669		29%	11%	28%	12%	27%	27%
rejected %	49%	37%	46%	36%	46%	48%	grade 1 events	492	542	266	150	349	322
								0%	0%	0%	0%	0%	0%
							grade 2 events	12270	43261	16561	25560	18182	14326
								7%	22%	10%	14%	10%	9%
							grade 3 events	5607	4890	5462	10894	7036	5627
								3%	2%	3%	5%	3%	3%
							grade 4 events	5544	4772	5532	10702	6791	5656
								3%	2%	3%	5%	3%	3%
							grade 5 events	3990	8863	4185	10541	5263	4568
								2%	4%	2%	5%	2%	2%
							grade 6 events	10263	46745	13787	47320	16181	13007
								6%	24%	8%	25%	9%	8%
							grade 7 events	74260	60462	68182	54271	76571	70858
								46%	31%	42%	29%	42%	44%

## 2.2 Compared Parameters

Parameter	Planned	Actual	Parameter	Planned	Actual
Instrument	ACIS	ACIS	Obspar format version number	7	7
Detector	ACIS-456789	ACIS-456789	Obspar file type	PREDICTED	ACTUAL
Grating	NONE	NONE	Obspar update status	OVERRIDE	OVERRIDE
Data mode	FAINT	FAINT	Number of optional ACIS chips dropped	0	0
Observation mode	SECONDARY	SECONDARY	On-chip summing requested	N	N
[deg] Pointing RA	71.96640511984569	71.96640507251759	Subarray requested	NONE	NONE
[deg] Pointing Dec	36.00955051947903	36.00955055696109	Alternating exposures requested	N	N
[deg] Pointing Roll	127.76586980541	127.7658699033261	[s] Primary exposure time	3.2	3.2
[mm] SIM focus pos	-0.68282252473119	-0.68282252473119			
[mm] SIM defocus	0.8505140384245534	0.8505140384245534			
[mm] SIM translation stage pos	250.4660330802	250.4660330802			
[mm] SIM translation stage offset	-0.01005726120527584	-0.01005726120527584			
[s] Observation start time (MET)	343145872.274562	343145872.274562			
Observation start date	2008-11-15T14:43:00	2008-11-15T14:17:52			
[s] Observation end time (MET)	343155389.902672	343155389.902672			
Observation end date	2008-11-15T16:45:00	2008-11-15T16:56:29			
Read mode	TIMED	TIMED			

**2.3 Star Slots**

**2.4 FID Slots**

# A Summary

## A.1 Status

V&V Scientist	Beth Sundheim
V&V Date (YYYY-MM-DD)	2012.05.31
V&V Edition	1
V&V Disposition and Status	OK
V&V Charge Time	7.7023999713659

## A.2 Comments