

V&V Reference Report

L2 ASCDS Version : 8.5.1

Observation 5755 - L2 Version 3
Chandra X-Ray Center

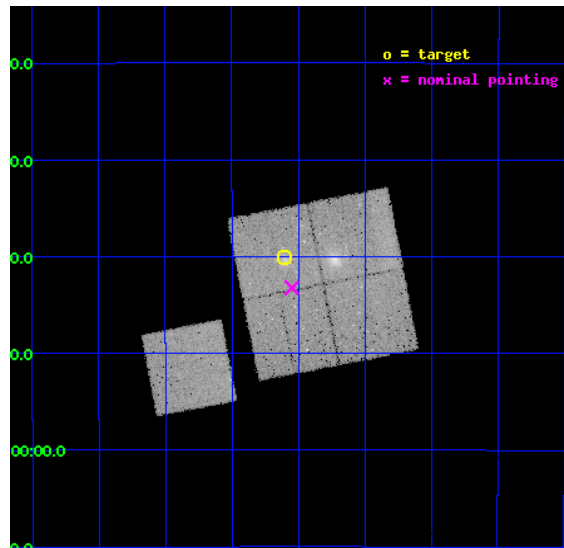
L2 Processing Date : Dec 18 2012

Contents

1	Front	2
2	OBI	3
2.1	OBI	3
2.1.1	Images	3
2.1.2	Bias	3
2.1.3	Parameters	4
2.1.4	Events	4
2.2	Compared Parameters	5
2.3	Aspect	6
2.4	Star Slots	9
2.4.1	Slot 3	9
2.4.2	Slot 4	10
2.4.3	Slot 5	11
2.4.4	Slot 6	12
2.4.5	Slot 7	13
2.5	FID Slots	14
2.5.1	Slot 0	14
2.5.2	Slot 1	15
2.5.3	Slot 2	16
A	Summary	17
A.1	Status	17
A.2	Comments	17

1 Front

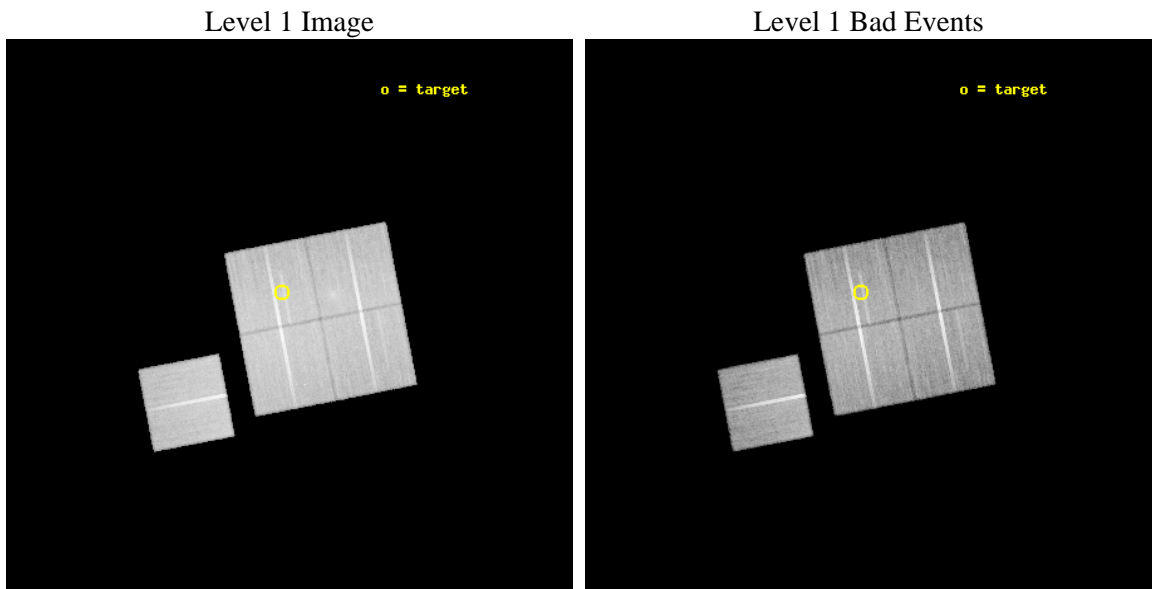
seq_num	800468	Sequence number
obs_id	5755	Observation id
title	DARK ENERGY WITH X-RAY CLUSTERS: CHANDRA OBSERVATIONS OF 41 HIGH-REDSHIFT CLUSTERS FROM THE 400 deg^2 ROSAT PSPC SURVEY	Proposal titl
observer	Dr. Alexey Vikhlinin	Principal investigator
object	cl0328-2140	Source name
dtcycle	0	
cycle	P	events from which exps? Prim/Second/Both
ra_targ	52.150417	Observer's specified target RA [deg]
dec_targ	-21.667778	Observer's specified target Dec [deg]
ra_nom	52.137185170019	Nominal RA [deg]
dec_nom	-21.720682319602	Nominal Dec [deg]
roll_nom	259.00379658643	Nominal Roll [deg]
revision	3	Processing version of data
ontime	43864.918014973	Sum of GTIs [s]
livetime	43291.790568225	Livetime [s]
ontime0	43864.91795519	Sum of GTIs [s]
ontime1	43864.917965204	Sum of GTIs [s]
ontime2	43864.917945206	Sum of GTIs [s]
ontime3	43864.918014973	Sum of GTIs [s]
ontime6	43868.05892548	Sum of GTIs [s]
l2events	121726	Number of level 2 events



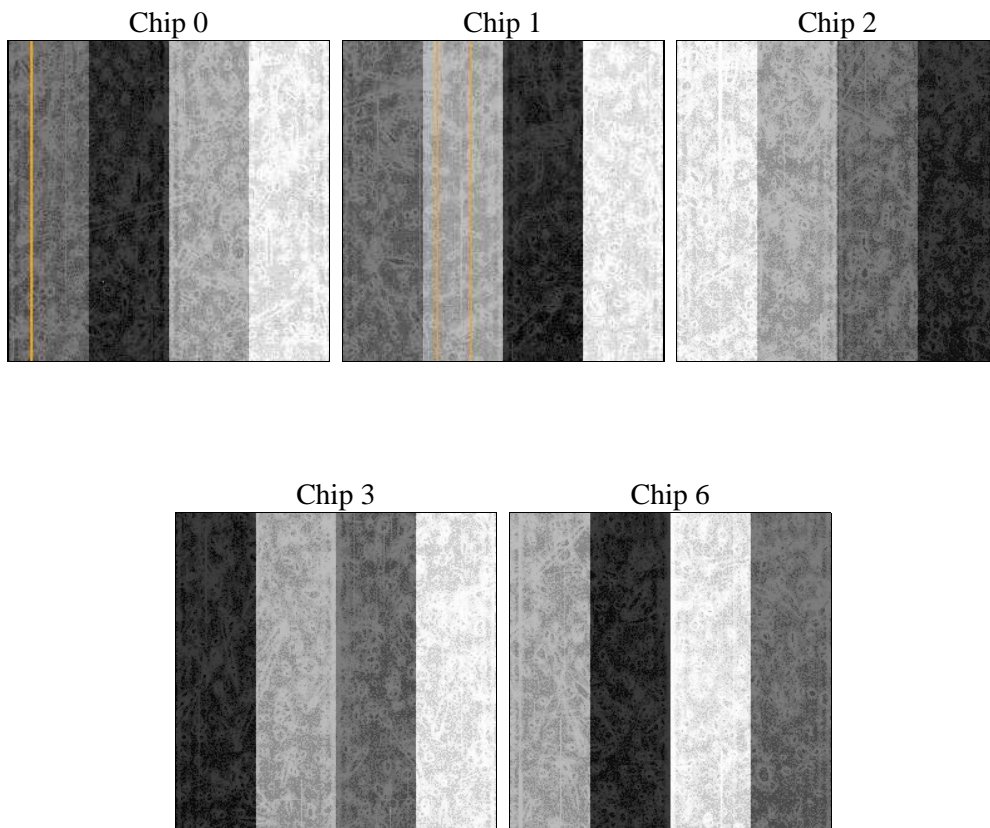
2 OBI

2.1 OBI

2.1.1 Images



2.1.2 Bias



2.1.3 Parameters

obi_num	0	Obi number	sched_exp_time	44100.000000	[s] Scheduled observation exposure time
ascdsver	8.5.1	Processing system revision	ontime	43864.918014973	Sum of GTIs [s]
caldbver	4.5.5	 	ontime0	43864.91795519	Sum of GTIs [s]
date	2012-12-18T09:26:59	Date and time of file creation	ontime1	43864.917965204	Sum of GTIs [s]
revision	3	Processing version of data	ontime2	43864.917945206	Sum of GTIs [s]
			ontime3	43864.918014973	Sum of GTIs [s]
			ontime6	43868.05892548	Sum of GTIs [s]
			l1events	1368902	Number of level 1 events

2.1.4 Events

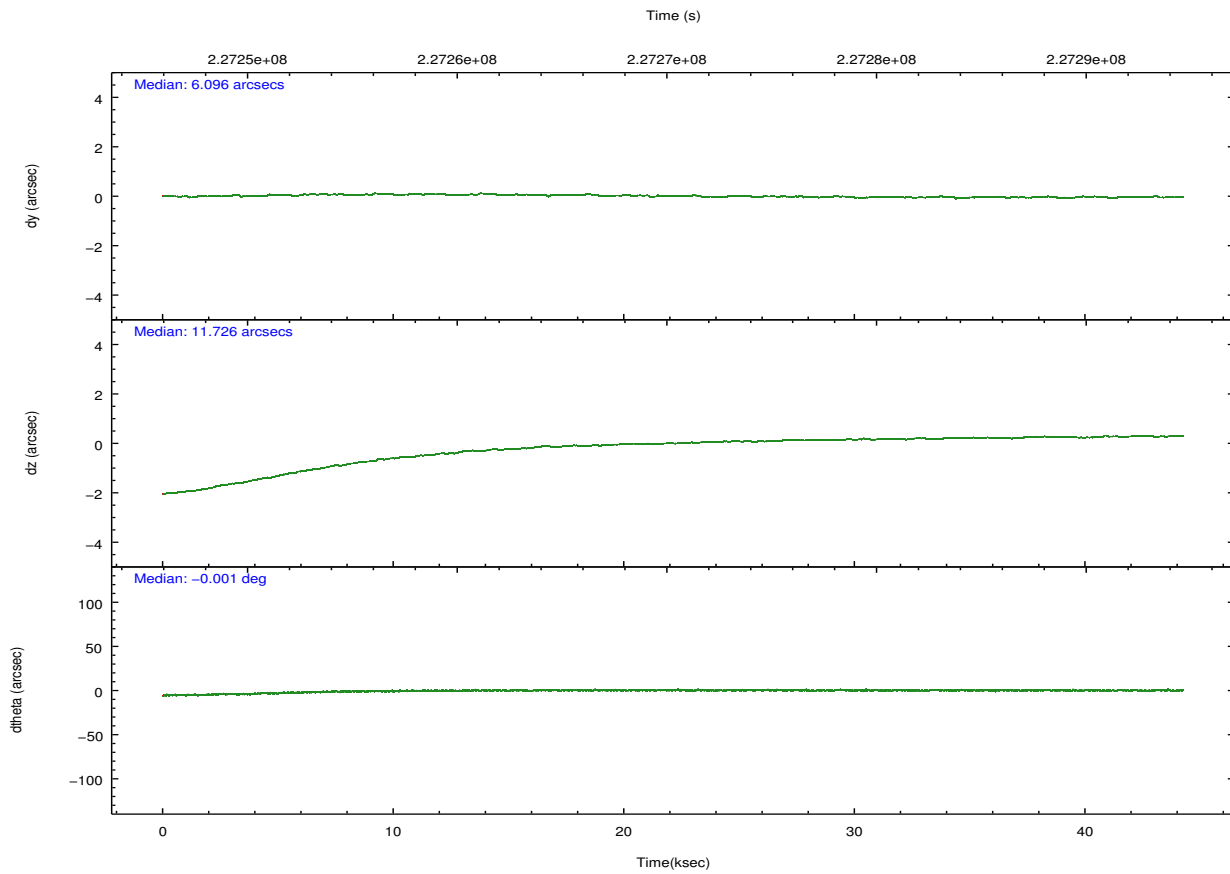
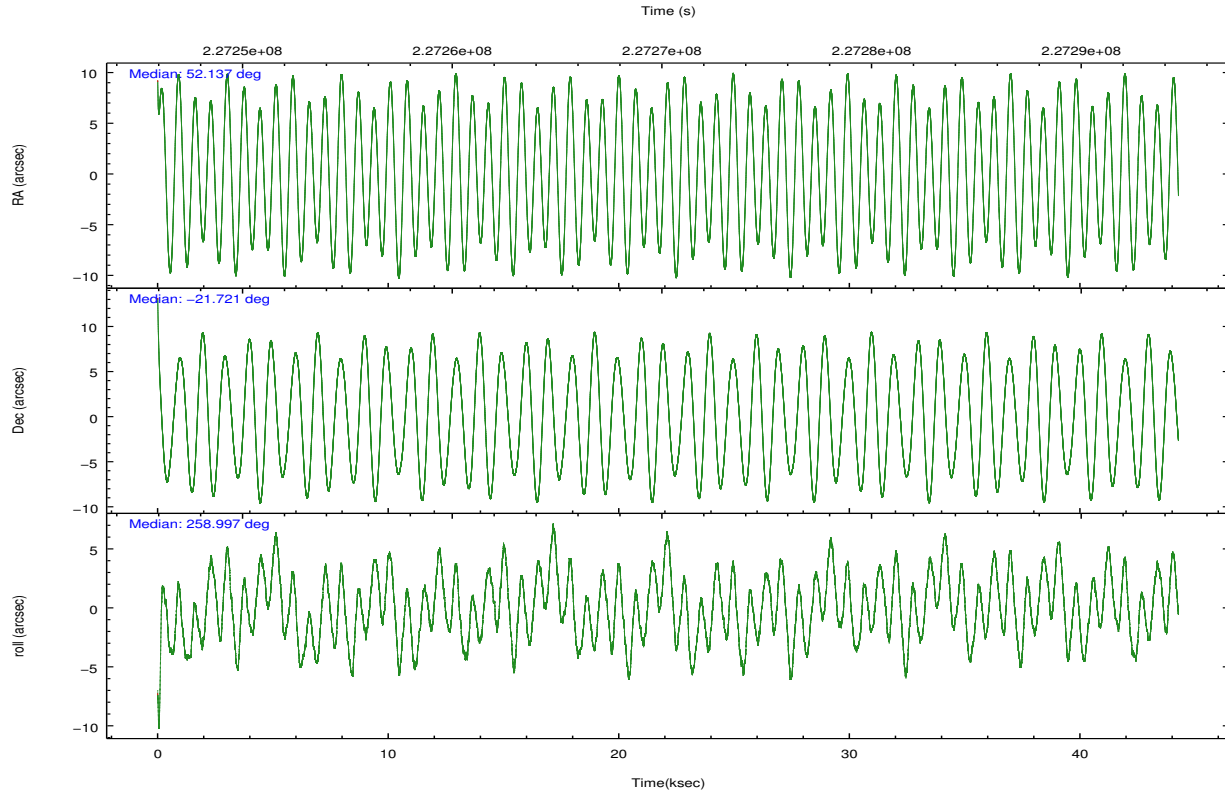
	ccd 0	ccd 1	ccd 2	ccd 3	ccd 6
level 1 events	254102	258646	294066	282979	279109
rejected events	226699	223768	266495	254737	251053
rejected %	89%	86%	90%	90%	89%

	ccd 0	ccd 1	ccd 2	ccd 3	ccd 6
grade 0 events	9376	14516	10277	11045	9670
	3%	5%	3%	3%	3%
grade 1 events	139	131	140	180	122
	0%	0%	0%	0%	0%
grade 2 events	6560	7095	6348	5814	6070
	2%	2%	2%	2%	2%
grade 3 events	3178	3535	2956	3028	3200
	1%	1%	1%	1%	1%
grade 4 events	3058	3465	2969	3106	3083
	1%	1%	1%	1%	1%
grade 5 events	9609	10540	9151	11062	10985
	3%	4%	3%	3%	3%
grade 6 events	5235	6276	5023	5254	6037
	2%	2%	1%	1%	2%
grade 7 events	216947	213088	257202	243490	239942
	85%	82%	87%	86%	85%

2.2 Compared Parameters

Parameter	Planned	Actual	Parameter	Planned	Actual
Instrument	ACIS	ACIS	Obspar format version number	7	7
Detector	ACIS-01236	ACIS-01236	Obspar file type	PREDICTED	ACTUAL
Grating	NONE	NONE	Obspar update status	NONE	UPDATED
Data mode	VFAINT	VFAINT	Number of optional ACIS chips dropped	0	0
Observation mode	POINTING	POINTING	On-chip summing requested	N	N
[deg] Pointing RA	52.127464	52.13718517001877	Subarray requested	NONE	NONE
[deg] Pointing Dec	-21.694819	-21.72068231960164	Alternating exposures requested	N	N
[deg] Pointing Roll	258.791511	259.0037965864295	[s] Primary exposure time	0.000000	3.1
[mm] SIM focus pos	-0.782348	-0.7809083437167272			
[mm] SIM defocus	0	0.001439871863259334			
[mm] SIM translation stage pos	-225.840463	-225.8458576473255			
[mm] SIM translation stage offset	-7.752	-7.746595355604228			
[s] Observation start time (MET)	227248333.184000	227247122.87281			
Observation start date	2005-03-15T04:31:09	2005-03-15T04:12:02			
[s] Observation end time (MET)	227292433.184000	227292900.39989			
Observation end date	2005-03-15T16:46:09	2005-03-15T16:55:00			
Read mode	TIMED	TIMED			

2.3 Aspect

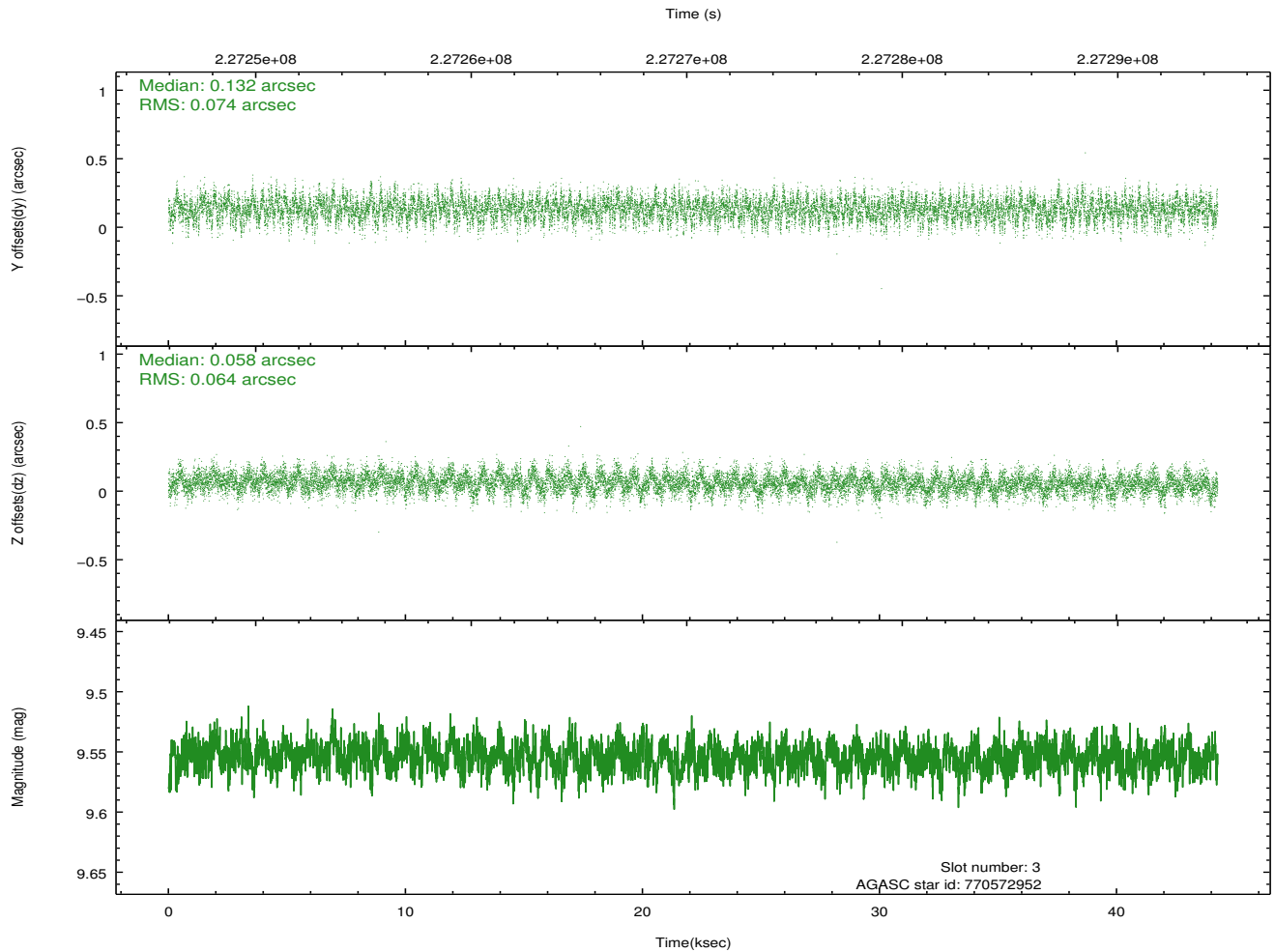
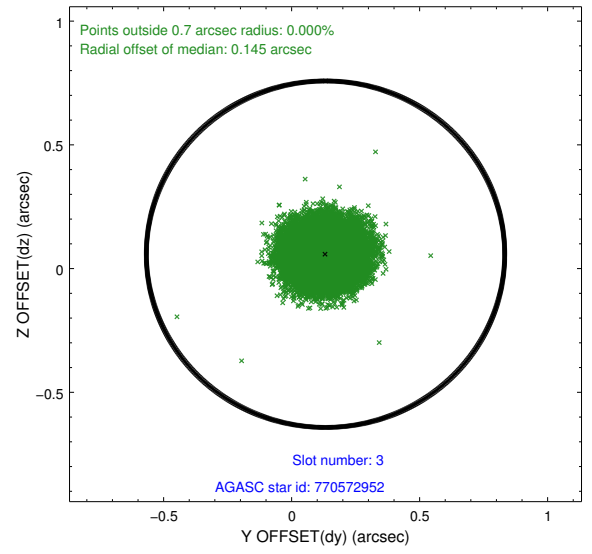
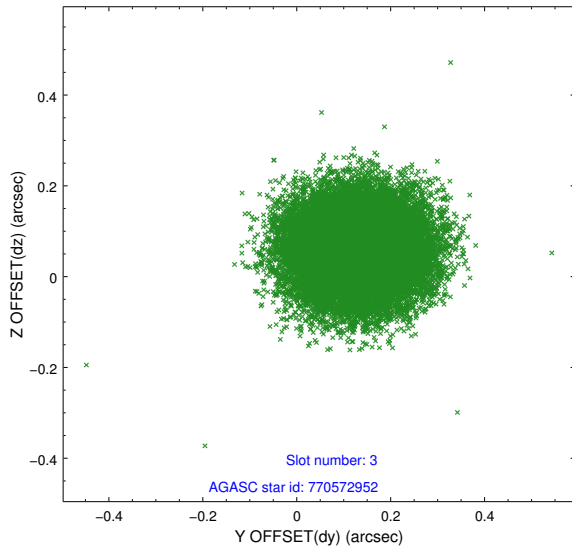


Slot Statistics

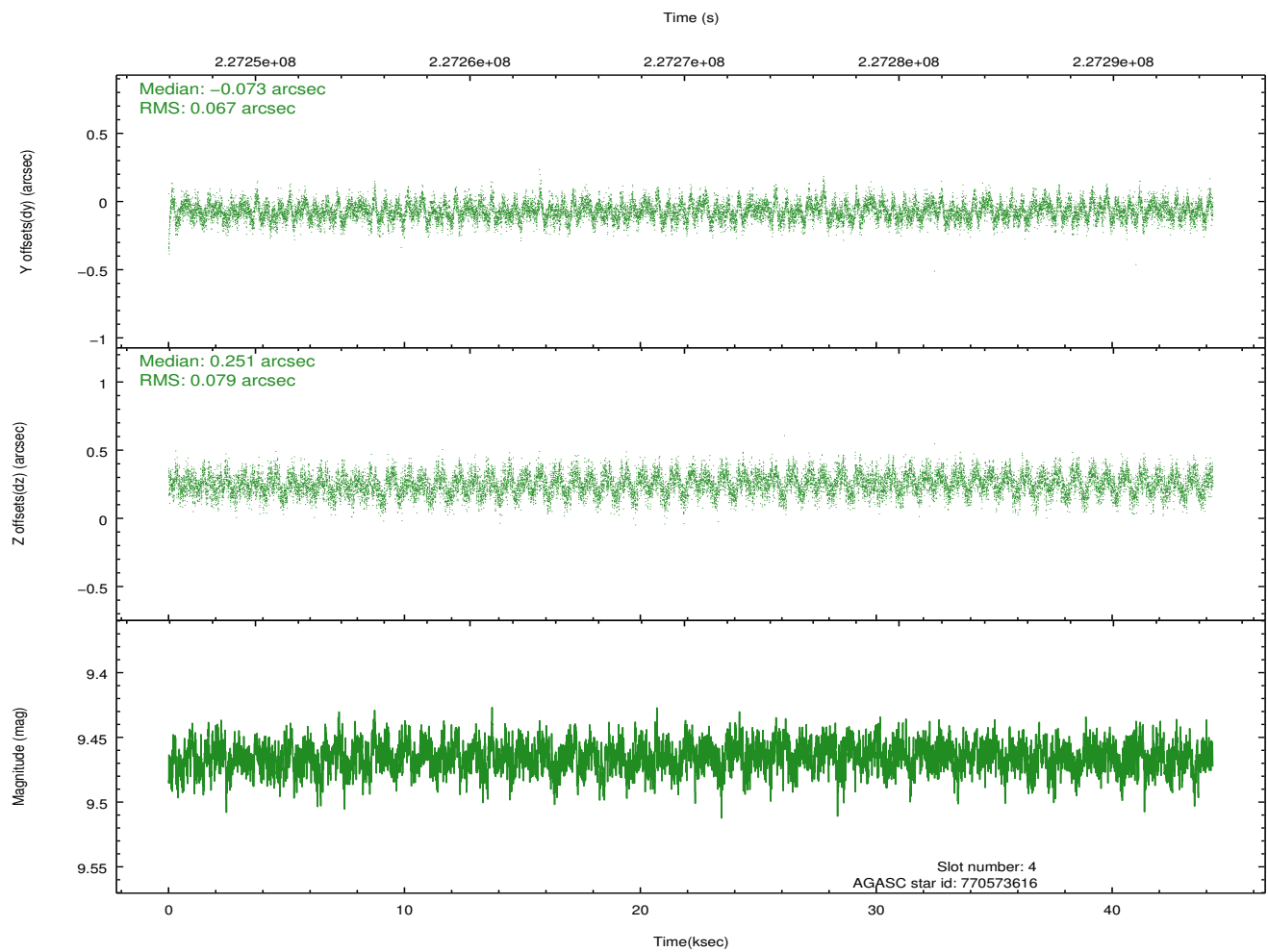
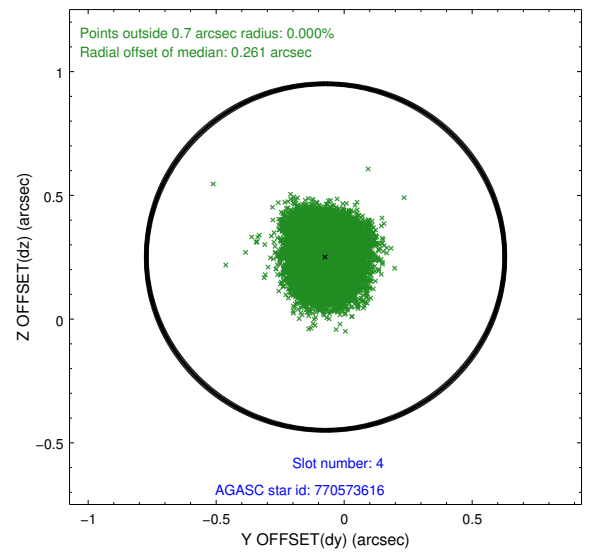
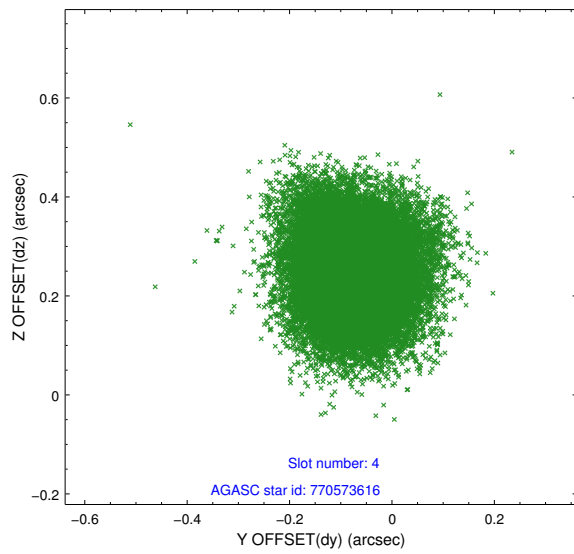
slot	status	id	mag	n_pts	med_dy	med_dz	dr1	dr2	ra	dec	mean_y	mean_z
0	FID	ACIS-I-1	7.23	10797	0.130	-0.105	0.011	0.033	0.000000	0.000000	933.56	-994.12
1	FID	ACIS-I-5	7.22	10797	-0.239	0.118	0.009	0.036	0.000000	0.000000	-1814.87	903.63
2	FID	ACIS-I-6	7.25	10798	0.016	0.058	0.014	0.044	0.000000	0.000000	399.05	1548.04
3	GUIDE	770572952	9.55	21578	0.132	0.058	0.105	0.168	52.678188	-22.321624	1860.50	2238.89
4	GUIDE	770573616	9.47	21566	-0.073	0.251	0.111	0.177	51.694921	-21.667566	187.59	-1437.61
5	GUIDE	770575272	8.84	21581	0.097	-0.056	0.087	0.144	51.531858	-22.160854	2036.03	-1620.79
6	GUIDE	770575376	8.46	21591	0.033	-0.087	0.067	0.109	51.490218	-22.063612	1719.91	-1825.82
7	GUIDE	770581640	7.84	21591	-0.189	-0.162	0.062	0.099	52.322400	-21.371182	-1269.25	414.59

2.4 Star Slots

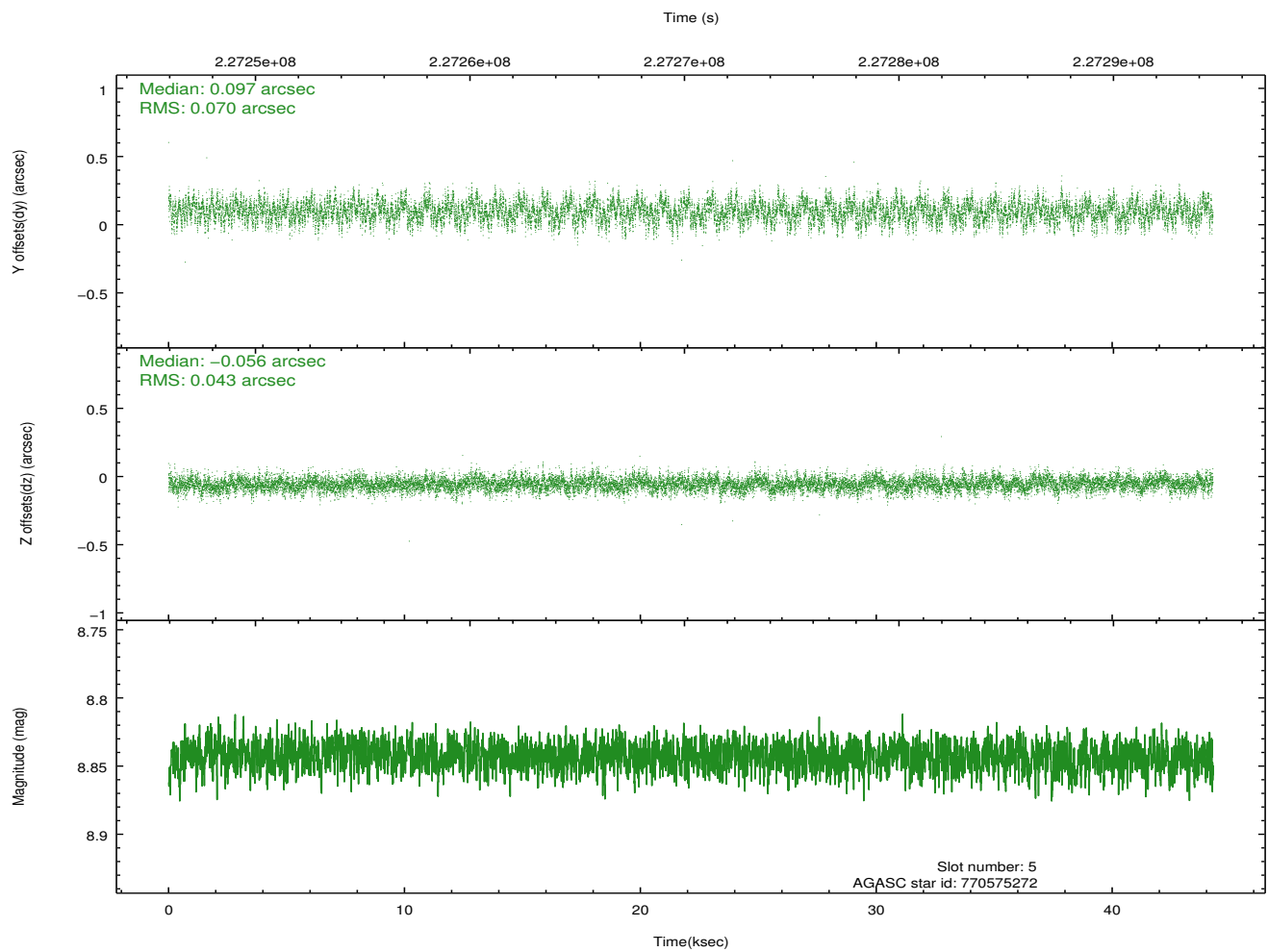
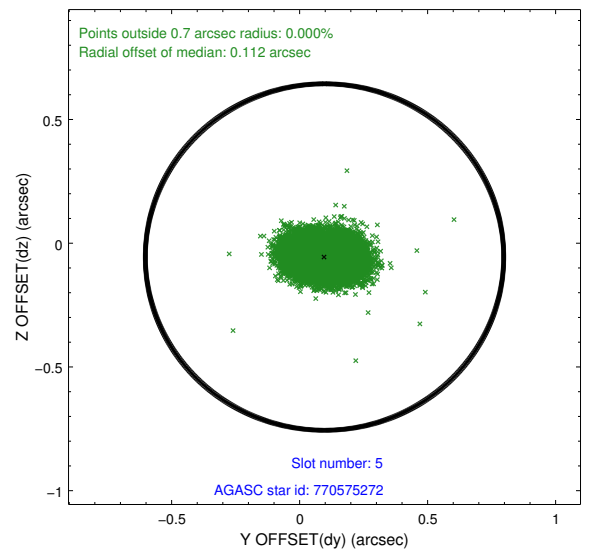
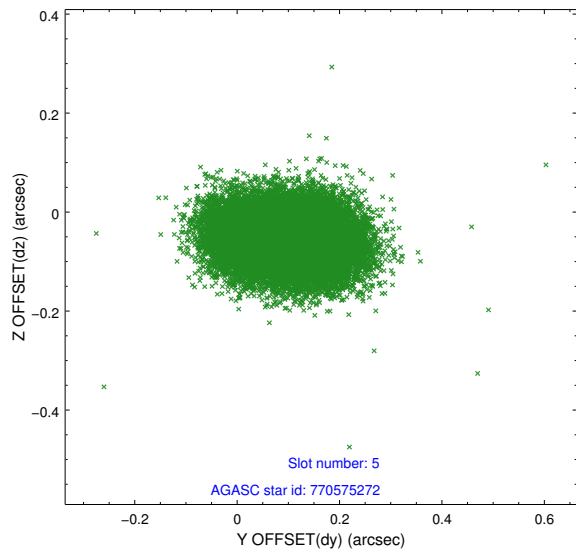
2.4.1 Slot 3



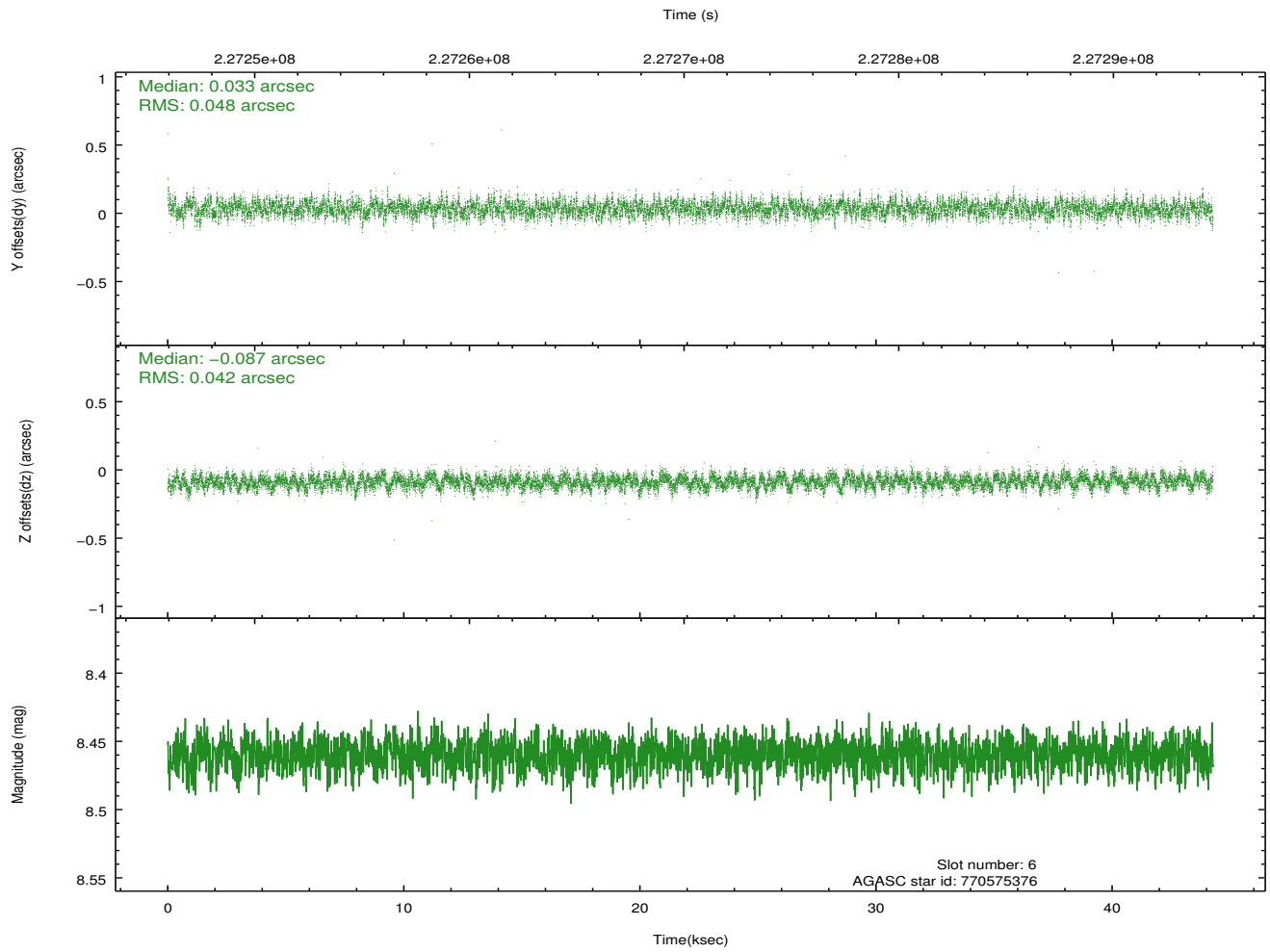
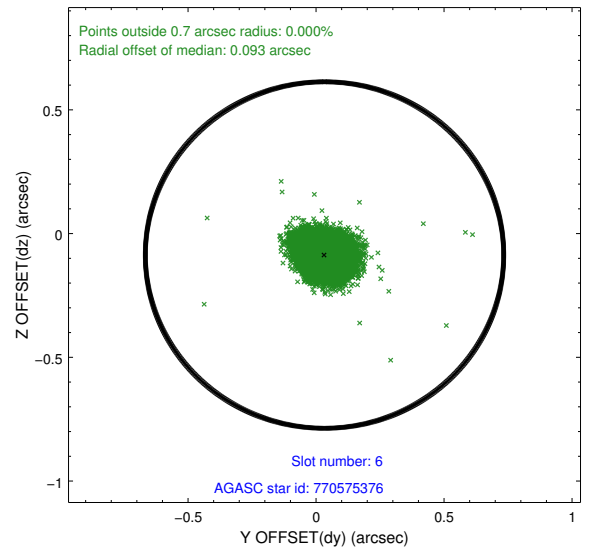
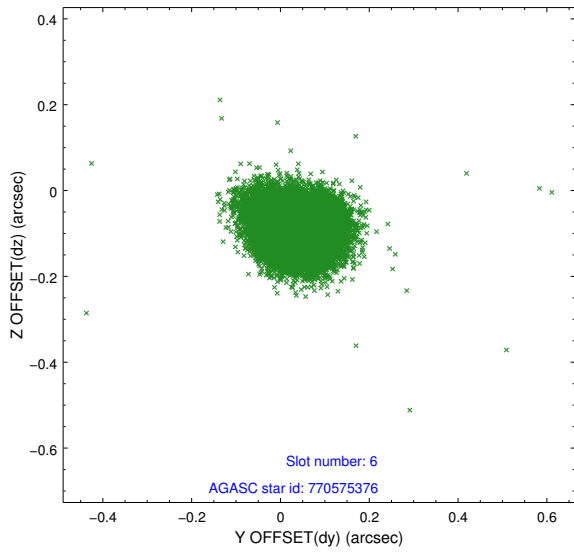
2.4.2 Slot 4



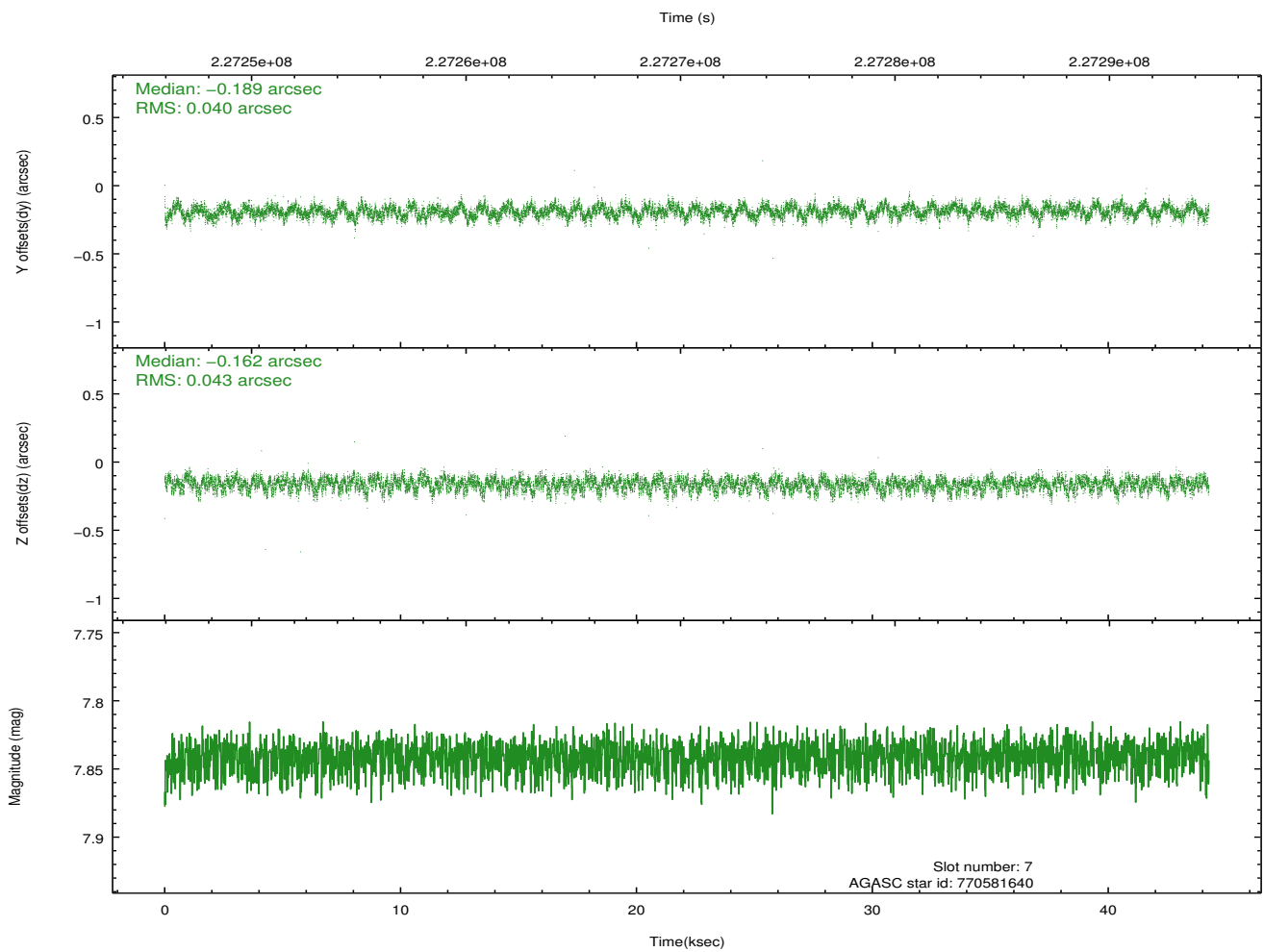
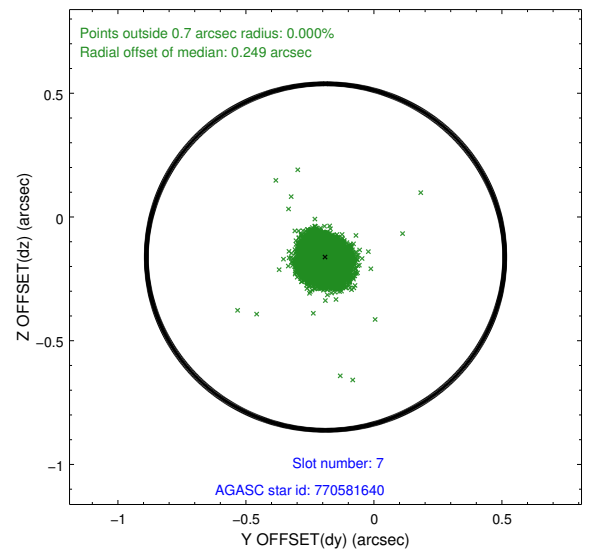
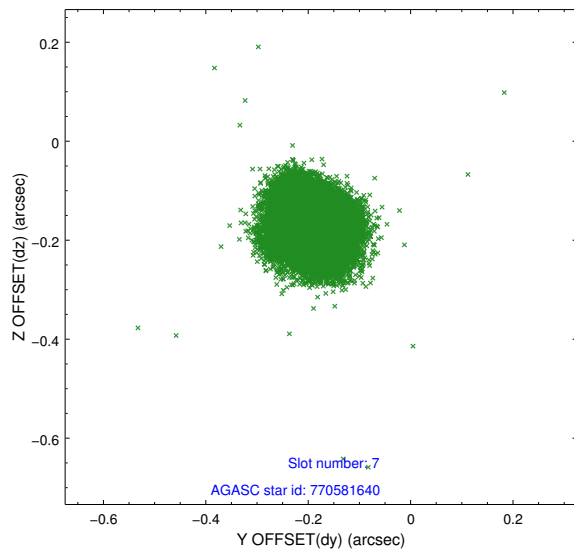
2.4.3 Slot 5



2.4.4 Slot 6

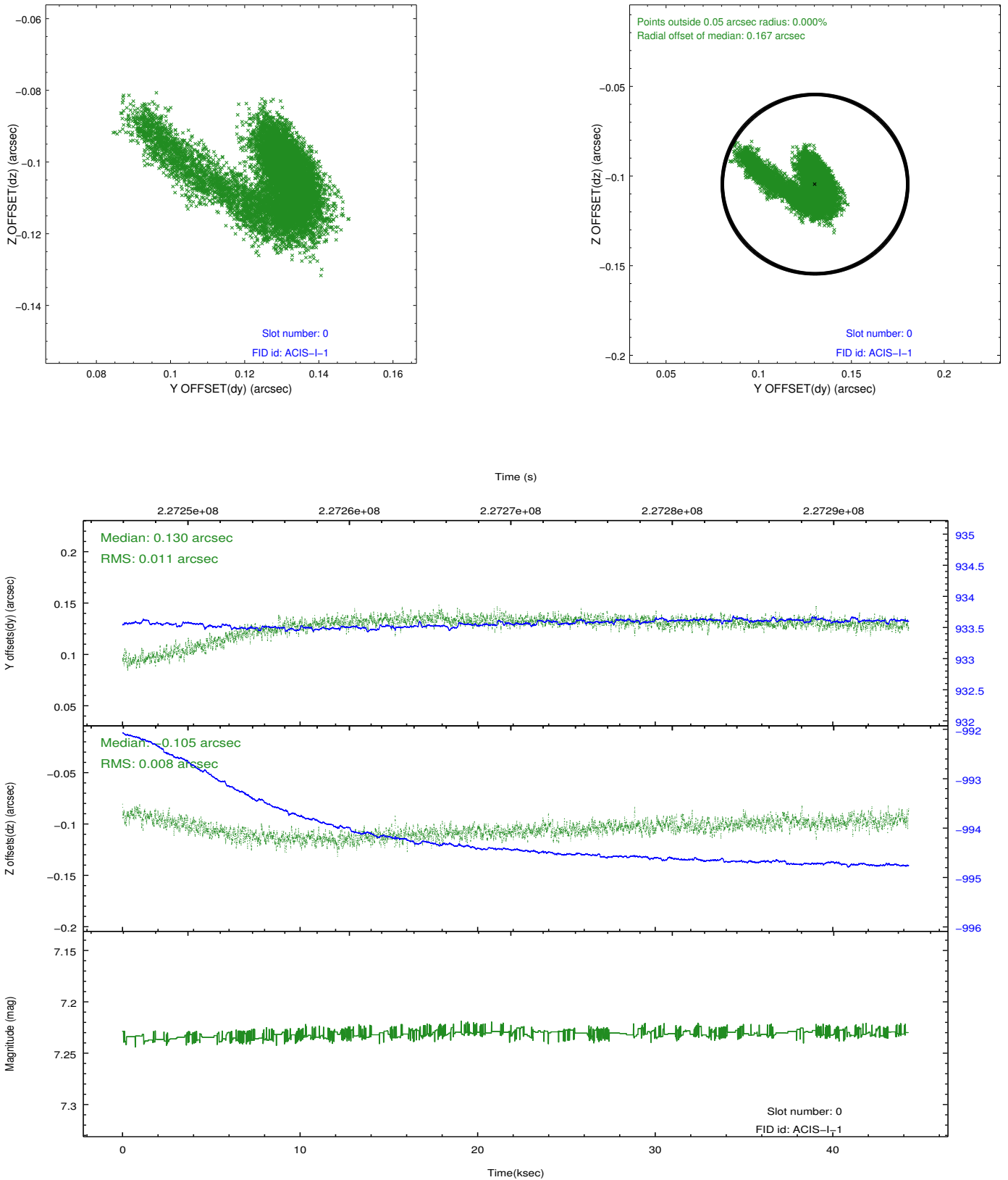


2.4.5 Slot 7

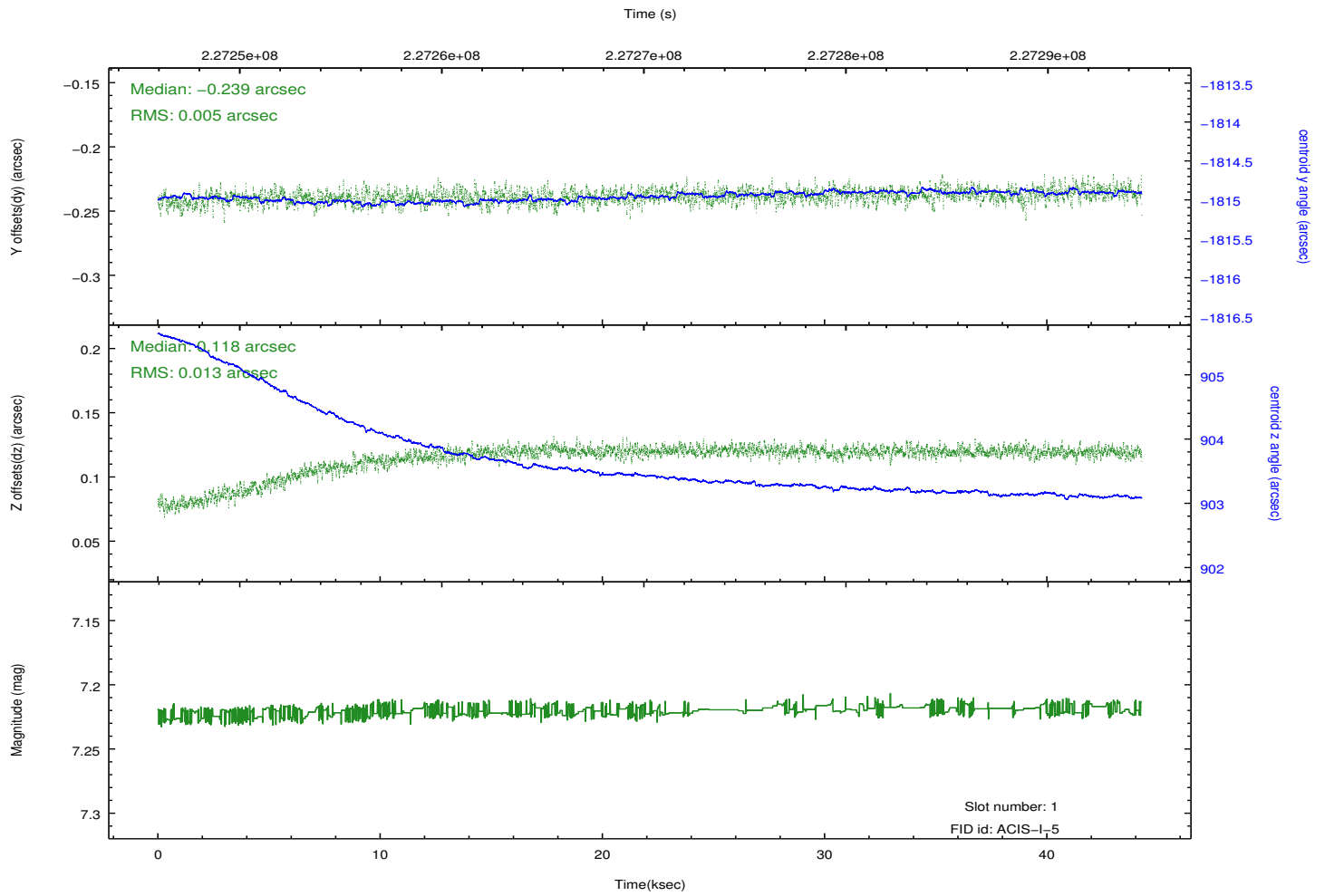
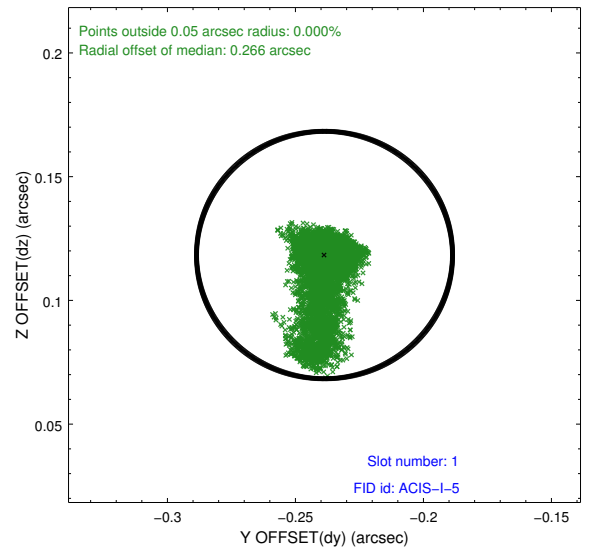
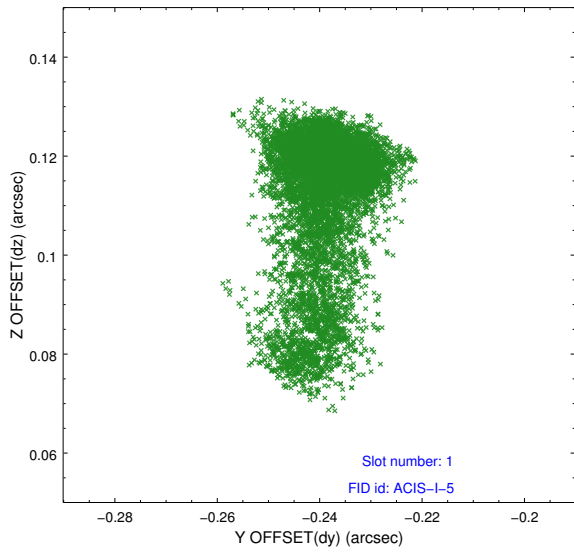


2.5 FID Slots

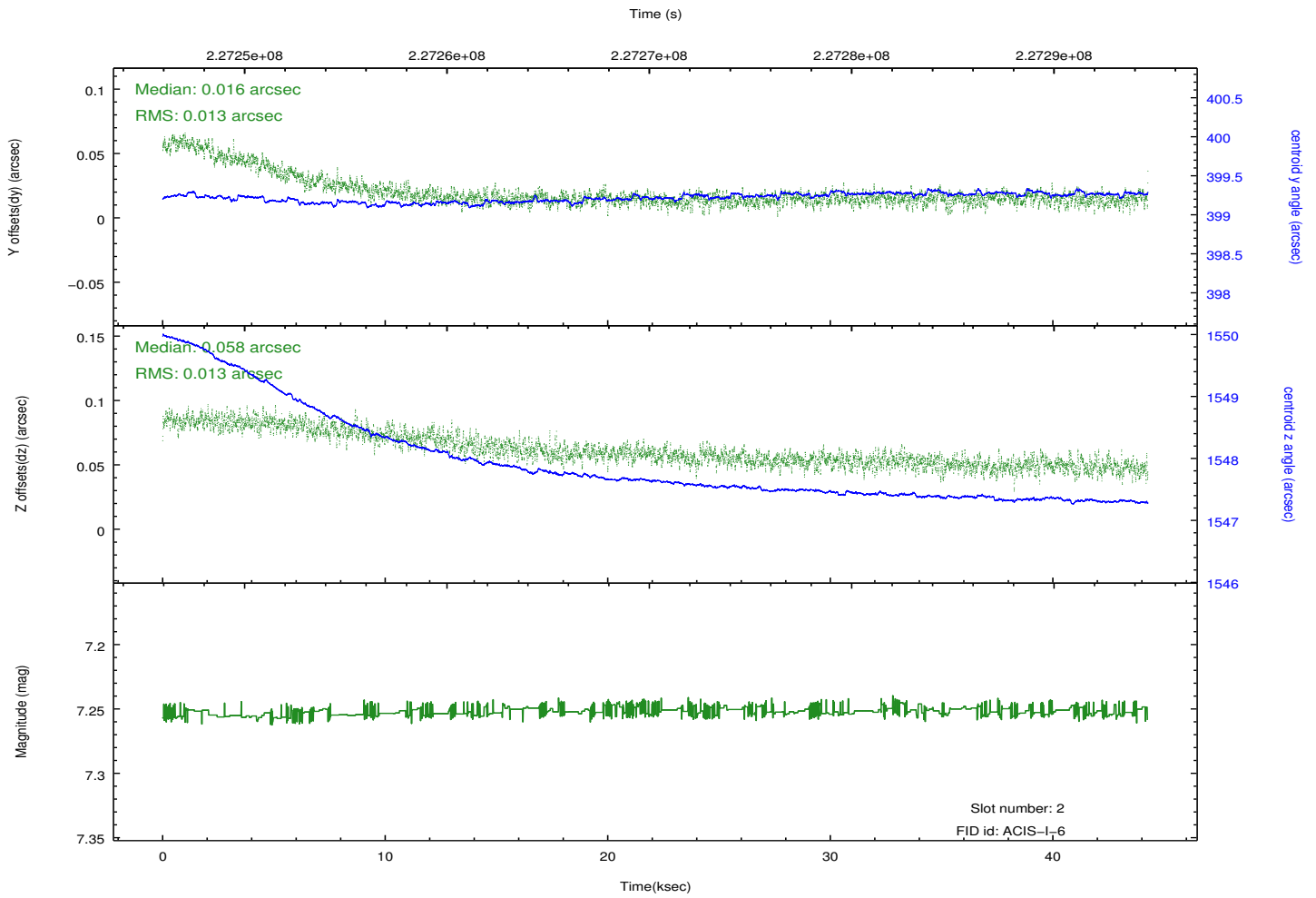
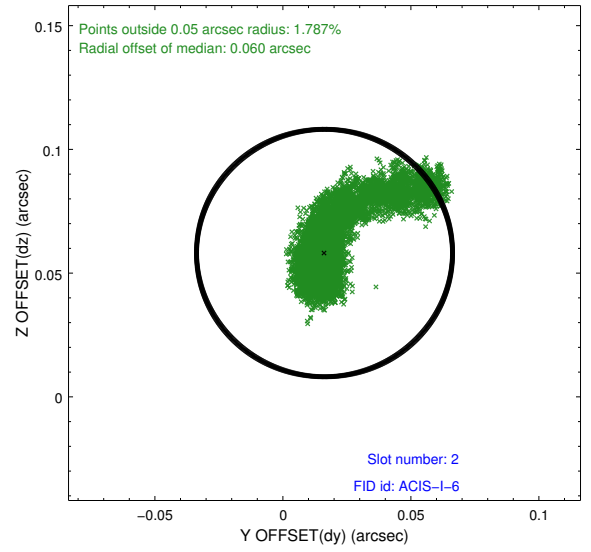
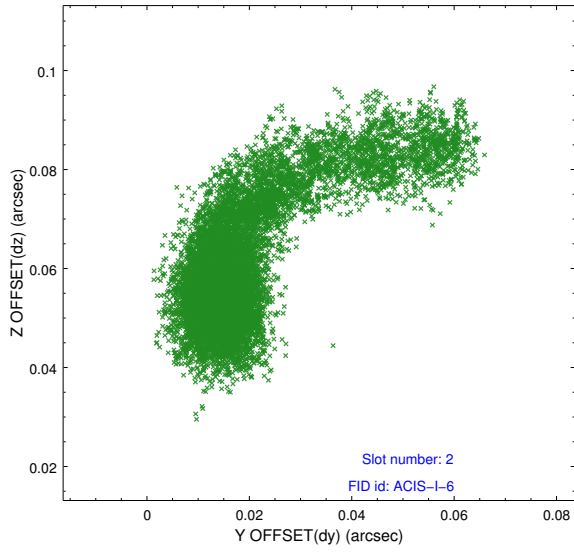
2.5.1 Slot 0



2.5.2 Slot 1



2.5.3 Slot 2



A Summary

A.1 Status

V&V Scientist	Jen Lauer
V&V Date (YYYY-MM-DD)	2013.01.11
V&V Edition	1
V&V Disposition and Status	OK
V&V Charge Time	43.86491

A.2 Comments