

V&V Reference Report

L2 ASCDS Version : 8.4.4

Observation 57565 - L2 Version 3
Chandra X-Ray Center

L2 Processing Date : May 22 2012

Contents

1	Front	2
2	OBI	3
2.1	OBI	3
2.1.1	Images	3
2.1.2	Bias	3
2.1.3	Parameters	4
2.1.4	Events	4
2.2	Compared Parameters	5
2.3	Star Slots	6
2.4	FID Slots	6
A	Summary	7
A.1	Status	7
A.2	Comments	7

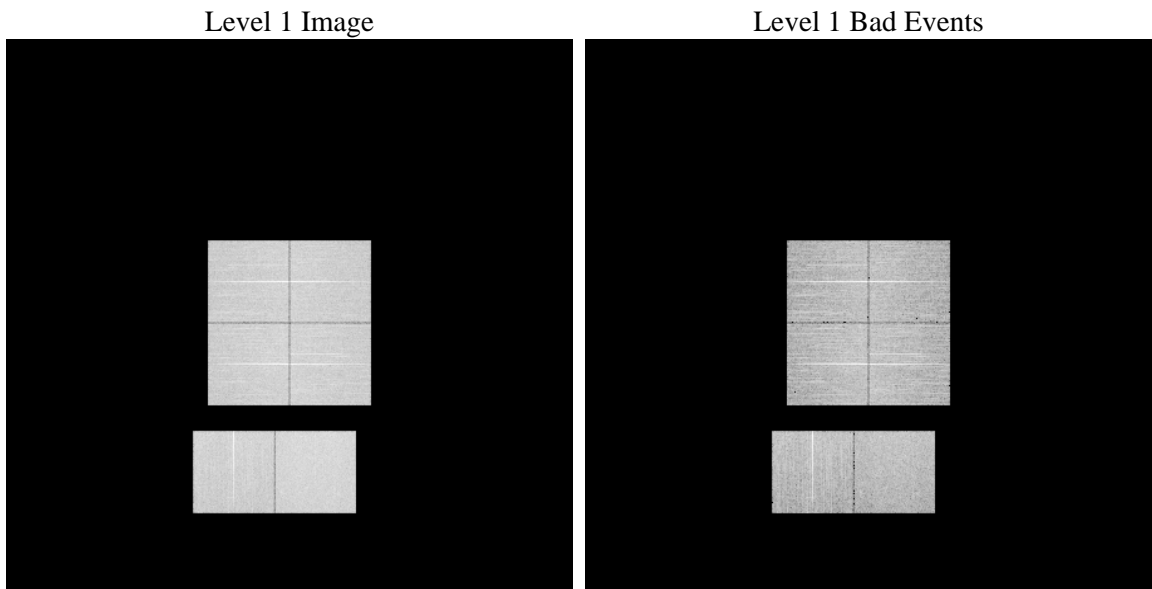
1 Front

seq_num	 	Sequence number
obs_id	57565	Observation id
title	ACIS-012367 diagnostics	Proposal title
observer	CHANDRA engineering request/realtime commanding	Principal investig
object	 	Source name
dtycycle	0	
cycle	P	events from which exps? Prim/Second/Both
ra_targ	0.0	Observer's specified target RA [deg]
dec_targ	0.0	Observer's specified target Dec [deg]
ra_nom	354.99604253786	Nominal RA [deg]
dec_nom	21.971505566414	Nominal Dec [deg]
roll_nom	229.81339476048	Nominal Roll [deg]
revision	3	Processing version of data
ontime	7977.5999703407	Sum of GTIs [s]
livetime	7876.5827959823	Livetime [s]
ontime0	7977.5999703407	Sum of GTIs [s]
ontime1	7977.5999703407	Sum of GTIs [s]
ontime2	7977.5999703407	Sum of GTIs [s]
ontime3	7977.5999703407	Sum of GTIs [s]
ontime6	7977.5999703407	Sum of GTIs [s]
ontime7	7977.5999703407	Sum of GTIs [s]
l2events	530942	Number of level 2 events

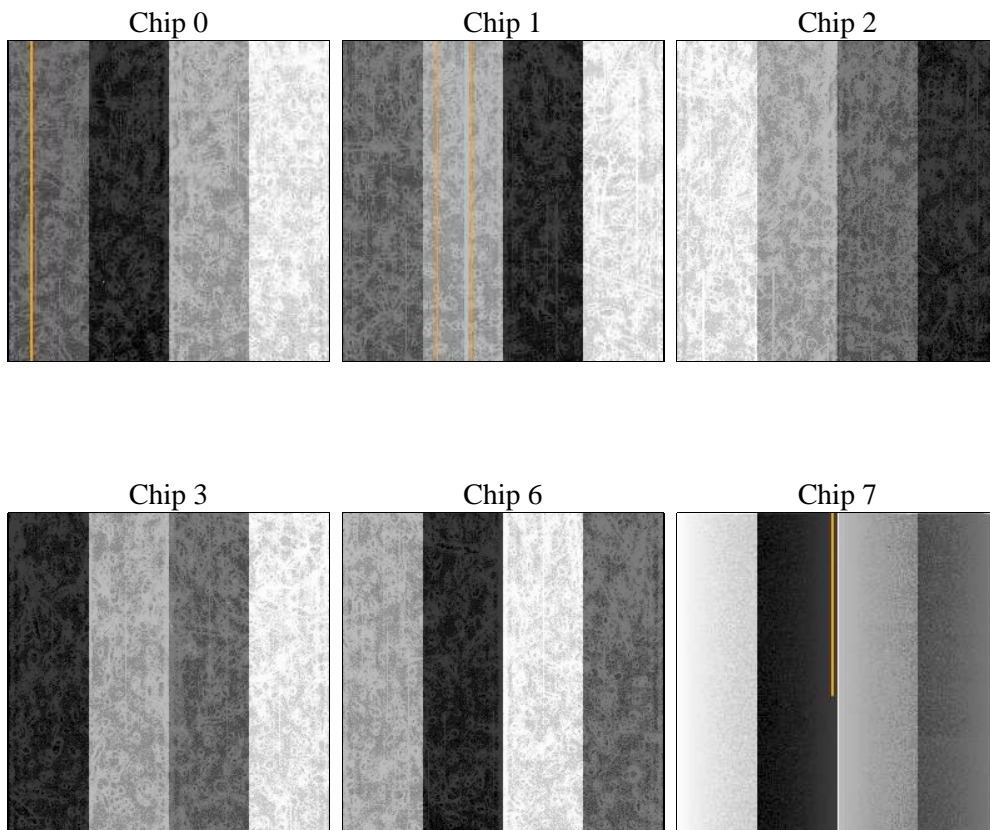
2 OBI

2.1 OBI

2.1.1 Images



2.1.2 Bias



2.1.3 Parameters

obi_num	1	Obi number	sched_exp_time	20760	[s] Scheduled observation exposure time
ascdsver	8.4.4	Processing system revision	ontime	7977.5999703407	Sum of GTIs [s]
caldbver	4.4.9	 	ontime0	7977.5999703407	Sum of GTIs [s]
date	2012-05-22T12:24:22	Date and time of file creation	ontime1	7977.5999703407	Sum of GTIs [s]
revision	3	Processing version of data	ontime2	7977.5999703407	Sum of GTIs [s]
			ontime3	7977.5999703407	Sum of GTIs [s]
			ontime6	7977.5999703407	Sum of GTIs [s]
			ontime7	7977.5999703407	Sum of GTIs [s]
			l1events	1015863	Number of level 1 events

2.1.4 Events

	ccd 0	ccd 1	ccd 2	ccd 3	ccd 6	ccd 7		ccd 0	ccd 1	ccd 2	ccd 3	ccd 6	ccd 7
level 1 events	160955	158612	166520	167768	167264	194744	grade 0 events	48081	47870	49148	50031	49333	24697
rejected events	74480	71624	79812	80185	76772	72295		29%	30%	29%	29%	29%	12%
rejected %	46%	45%	47%	47%	45%	37%	grade 1 events	351	319	375	387	313	173
								0%	0%	0%	0%	0%	0%
							grade 2 events	16116	16609	15635	15897	16820	27578
								10%	10%	9%	9%	10%	14%
							grade 3 events	6115	5848	6236	5983	6083	12115
								3%	3%	3%	3%	3%	6%
							grade 4 events	5910	5973	6196	6115	6165	11920
								3%	3%	3%	3%	3%	6%
							grade 5 events	3869	4104	3750	4391	4372	11160
								2%	2%	2%	2%	2%	5%
							grade 6 events	13524	13863	12765	12806	15461	50799
								8%	8%	7%	7%	9%	26%
							grade 7 events	66989	64026	72415	72158	68717	56302
								41%	40%	43%	43%	41%	28%

2.2 Compared Parameters

Parameter	Planned	Actual	Parameter	Planned	Actual
Instrument	ACIS	ACIS	Obspar format version number	7	7
Detector	ACIS-012367	ACIS-012367	Obspar file type	PREDICTED	ACTUAL
Grating	NONE	NONE	Obspar update status	OVERRIDE	OVERRIDE
Data mode	FAINT	FAINT	Number of optional ACIS chips dropped	0	0
Observation mode	SECONDARY	SECONDARY	On-chip summing requested	N	N
[deg] Pointing RA	354.9960426187646	354.9960425378645	Subarray requested	NONE	NONE
[deg] Pointing Dec	21.97150549334628	21.97150556641396	Alternating exposures requested	N	N
[deg] Pointing Roll	229.8133947415098	229.8133947604782	[s] Primary exposure time	3.2	3.2
[mm] SIM focus pos	-0.78090834371673	-0.78090834371673			
[mm] SIM defocus	0.7524282194390134	0.7524282194390134			
[mm] SIM translation stage pos	250.4660330802	250.4660330802			
[mm] SIM translation stage offset	-0.01005726120527584	-0.01005726120527584			
[s] Observation start time (MET)	339751619.457218	339751619.457218			
Observation start date	2008-10-07T08:20:00	2008-10-07T07:26:59			
[s] Observation end time (MET)	339775497.689743	339775497.689743			
Observation end date	2008-10-07T14:06:00	2008-10-07T14:04:57			
Read mode	TIMED	TIMED			

2.3 Star Slots

2.4 FID Slots

A Summary

A.1 Status

V&V Scientist	Jen Lauer
V&V Date (YYYY-MM-DD)	2012.05.30
V&V Edition	1
V&V Disposition and Status	OK
V&V Charge Time	7.9775999703407

A.2 Comments