

V&V Reference Report

L2 ASCDS Version : 8.5.1

Observation 5785 - L2 Version 3
Chandra X-Ray Center

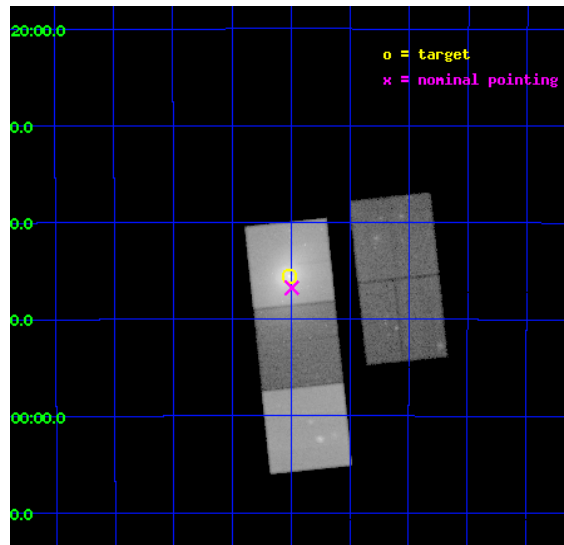
L2 Processing Date : Dec 16 2012

Contents

1	Front	2
2	OBI	3
2.1	OBI	3
2.1.1	Images	3
2.1.2	Bias	3
2.1.3	Parameters	4
2.1.4	Events	4
2.2	Compared Parameters	5
2.3	Aspect	6
2.4	Star Slots	9
2.4.1	Slot 3	9
2.4.2	Slot 4	10
2.4.3	Slot 5	11
2.4.4	Slot 6	12
2.4.5	Slot 7	13
2.5	FID Slots	14
2.5.1	Slot 0	14
2.5.2	Slot 1	15
2.5.3	Slot 2	16
A	Summary	17
A.1	Status	17
A.2	Comments	17

1 Front

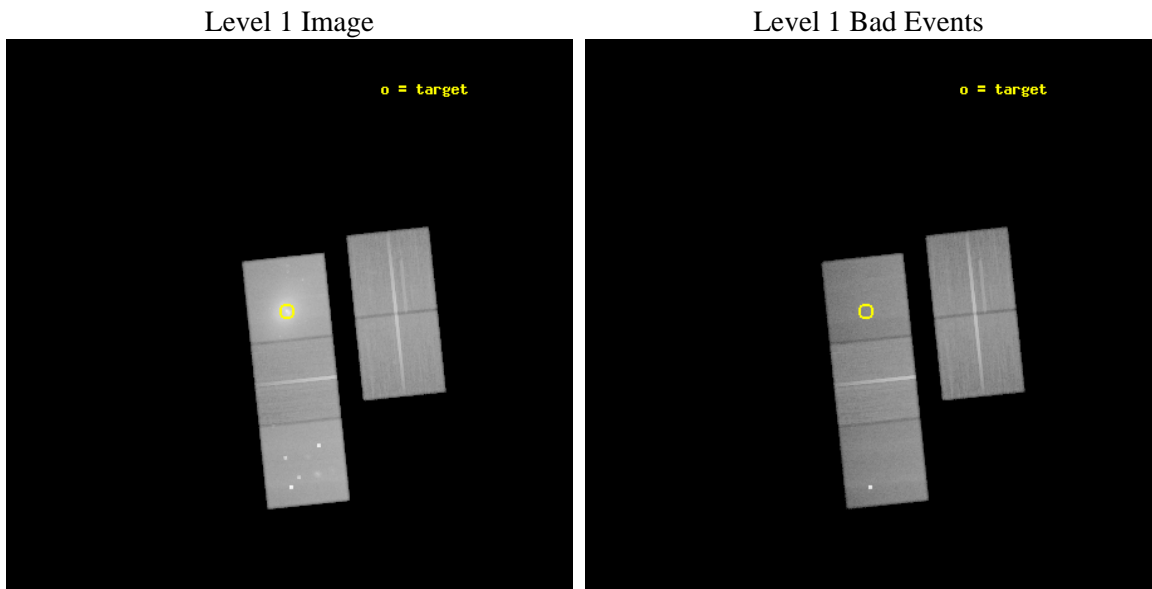
seq_num	800498	Sequence number
obs_id	5785	Observation id
title	The Complex Radio-Galaxy/ICM interaction in A4059	Proposal title
observer	Prof Christopher Reynolds	Principal investigator
object	ABELL 4059	Source name
dtcycle	0	
cycle	P	events from which exps? Prim/Second/Both
ra_targ	359.252917	Observer's specified target RA [deg]
dec_targ	-34.759167	Observer's specified target Dec [deg]
ra_nom	359.24819579447	Nominal RA [deg]
dec_nom	-34.779569867981	Nominal Dec [deg]
roll_nom	263.99858629807	Nominal Roll [deg]
revision	3	Processing version of data
ontime	93340.794889599	Sum of GTIs [s]
livetime	92121.228687873	Livetime [s]
ontime2	93325.090038389	Sum of GTIs [s]
ontime3	93315.667058051	Sum of GTIs [s]
ontime5	93337.653969169	Sum of GTIs [s]
ontime6	93334.512949079	Sum of GTIs [s]
ontime7	93340.794889599	Sum of GTIs [s]
l2events	1286797	Number of level 2 events



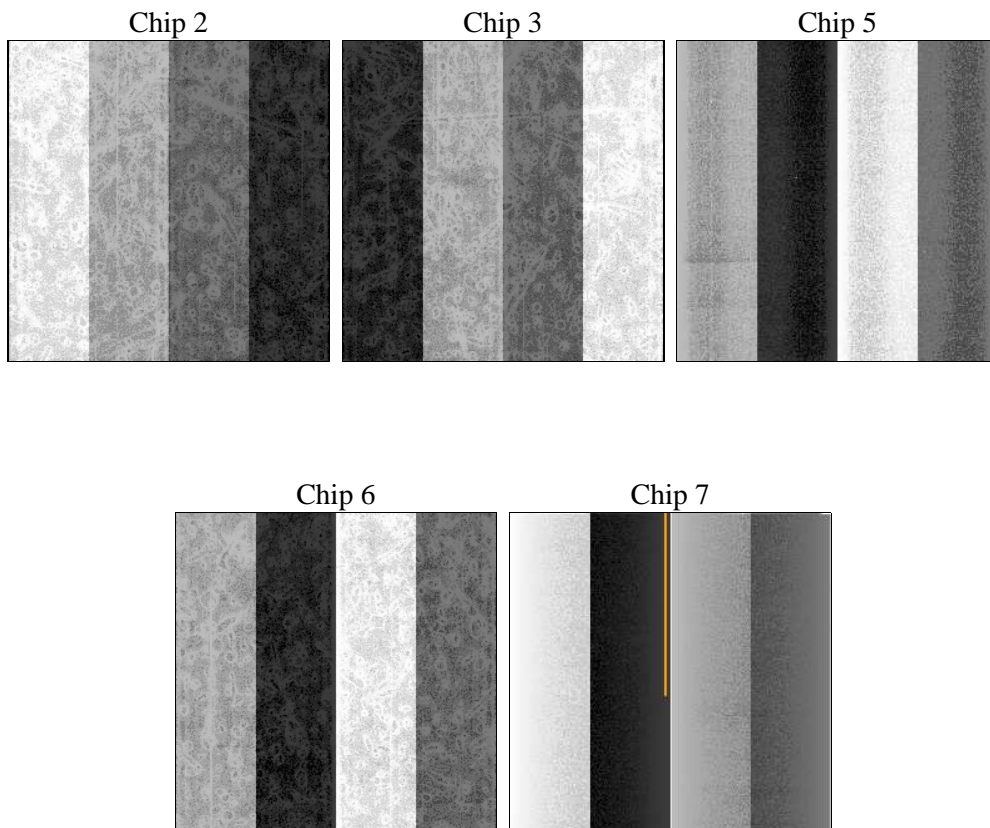
2 OBI

2.1 OBI

2.1.1 Images



2.1.2 Bias



2.1.3 Parameters

obi_num	0	Obi number	sched_exp_time	93174.771000	[s] Scheduled observation exposure time
ascdsver	8.5.1	Processing system revision	ontime	93340.794889599	Sum of GTIs [s]
caldbver	4.5.5	 	ontime2	93325.090038389	Sum of GTIs [s]
date	2012-12-16T17:14:49	Date and time of file creation	ontime3	93315.667058051	Sum of GTIs [s]
revision	3	Processing version of data	ontime5	93337.653969169	Sum of GTIs [s]
			ontime6	93334.512949079	Sum of GTIs [s]
			ontime7	93340.794889599	Sum of GTIs [s]
			l1events	3645453	Number of level 1 events

2.1.4 Events

	ccd 2	ccd 3	ccd 5	ccd 6	ccd 7
level 1 events	567136	556952	817332	607168	1096865
rejected events	508655	497516	408840	511099	348538
rejected %	89%	89%	50%	84%	31%

	ccd 2	ccd 3	ccd 5	ccd 6	ccd 7
grade 0 events	23116	24562	58307	51413	173631
	4%	4%	7%	8%	15%
grade 1 events	304	344	683	319	673
	0%	0%	0%	0%	0%
grade 2 events	12858	11837	118432	16321	178251
	2%	2%	14%	2%	16%
grade 3 events	6192	6305	17699	7736	80721
	1%	1%	2%	1%	7%
grade 4 events	6295	6137	16631	7567	79704
	1%	1%	2%	1%	7%
grade 5 events	18342	21779	70845	22409	69301
	3%	3%	8%	3%	6%
grade 6 events	10216	10812	198610	13255	237431
	1%	1%	24%	2%	21%
grade 7 events	489813	475176	336125	488148	277153
	86%	85%	41%	80%	25%

2.2 Compared Parameters

Parameter	Planned	Actual	Parameter	Planned	Actual
Instrument	ACIS	ACIS	Obspar format version number	7	7
Detector	ACIS-23567	ACIS-23567	Obspar file type	PREDICTED	ACTUAL
Grating	NONE	NONE	Obspar update status	NONE	UPDATED
Data mode	VFAINT	VFAINT	Number of optional ACIS chips dropped	0	0
Observation mode	POINTING	POINTING	On-chip summing requested	N	N
[deg] Pointing RA	359.234305	359.2481957944697	Subarray requested	NONE	NONE
[deg] Pointing Dec	-34.754835	-34.77956986798056	Alternating exposures requested	N	N
[deg] Pointing Roll	263.834040	263.9985862980731	[s] Primary exposure time	0.000000	3.1
[mm] SIM focus pos	-0.684267	-0.6828225247311905			
[mm] SIM defocus	0	0.001444936568705701			
[mm] SIM translation stage pos	-190.132523	-190.1400660498719			
[mm] SIM translation stage offset	0	0.00754346686406393			
[s] Observation start time (MET)	223104181.184000	223103047.17273			
Observation start date	2005-01-26T05:21:57	2005-01-26T05:04:07			
[s] Observation end time (MET)	223197356.184000	223197577.2895			
Observation end date	2005-01-27T07:14:52	2005-01-27T07:19:37			
Read mode	TIMED	TIMED			

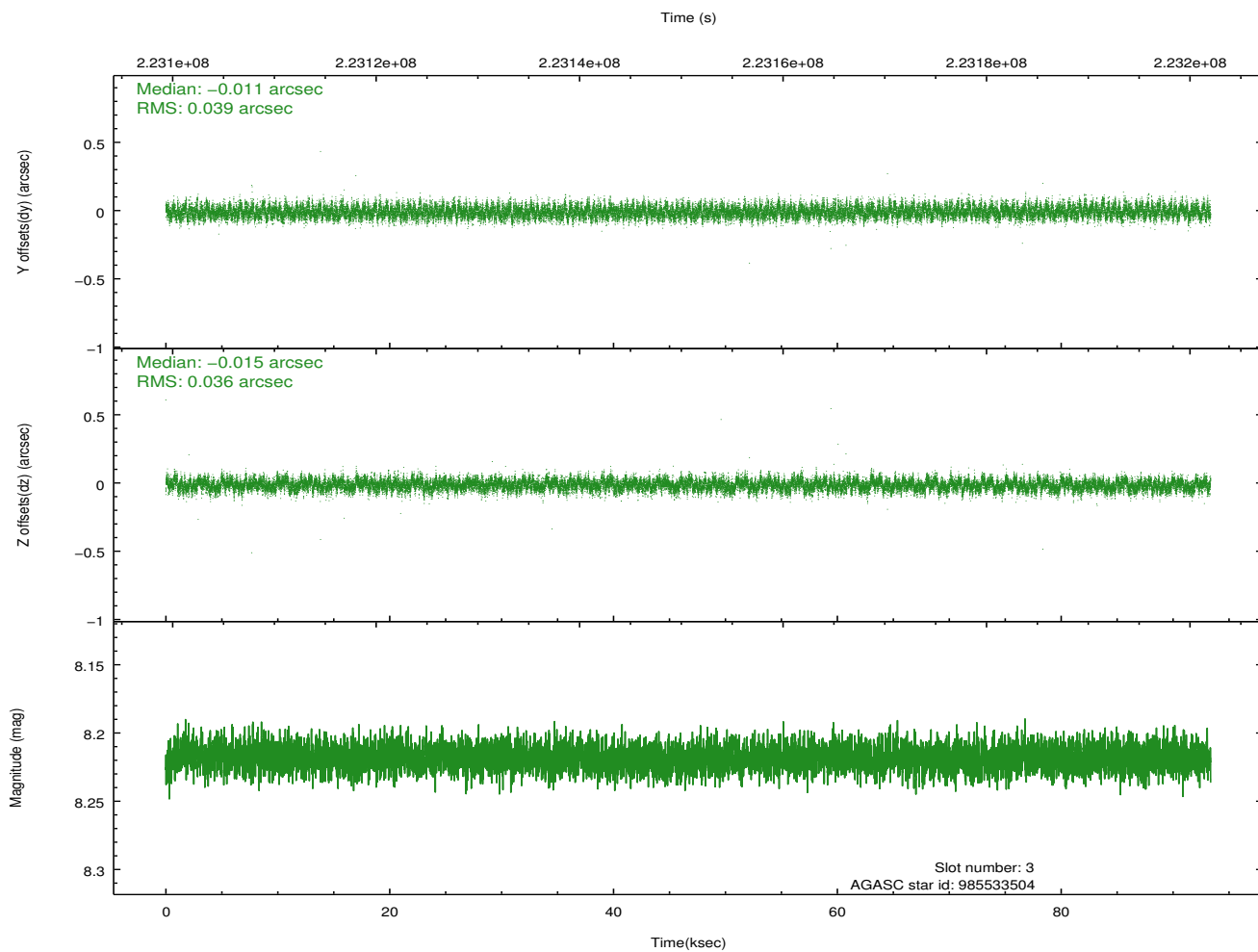
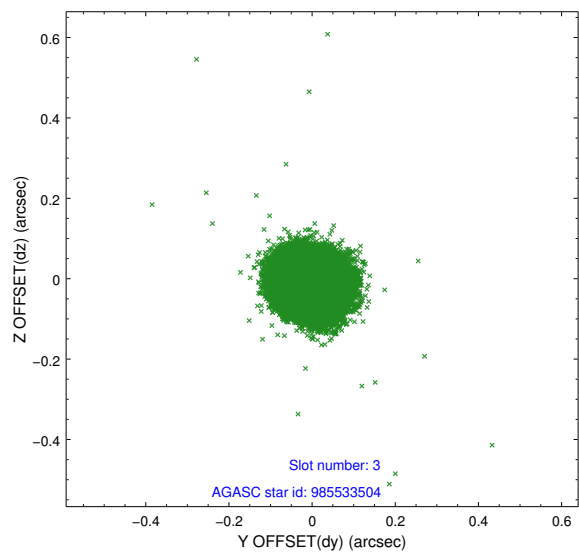
2.3 Aspect

Slot Statistics

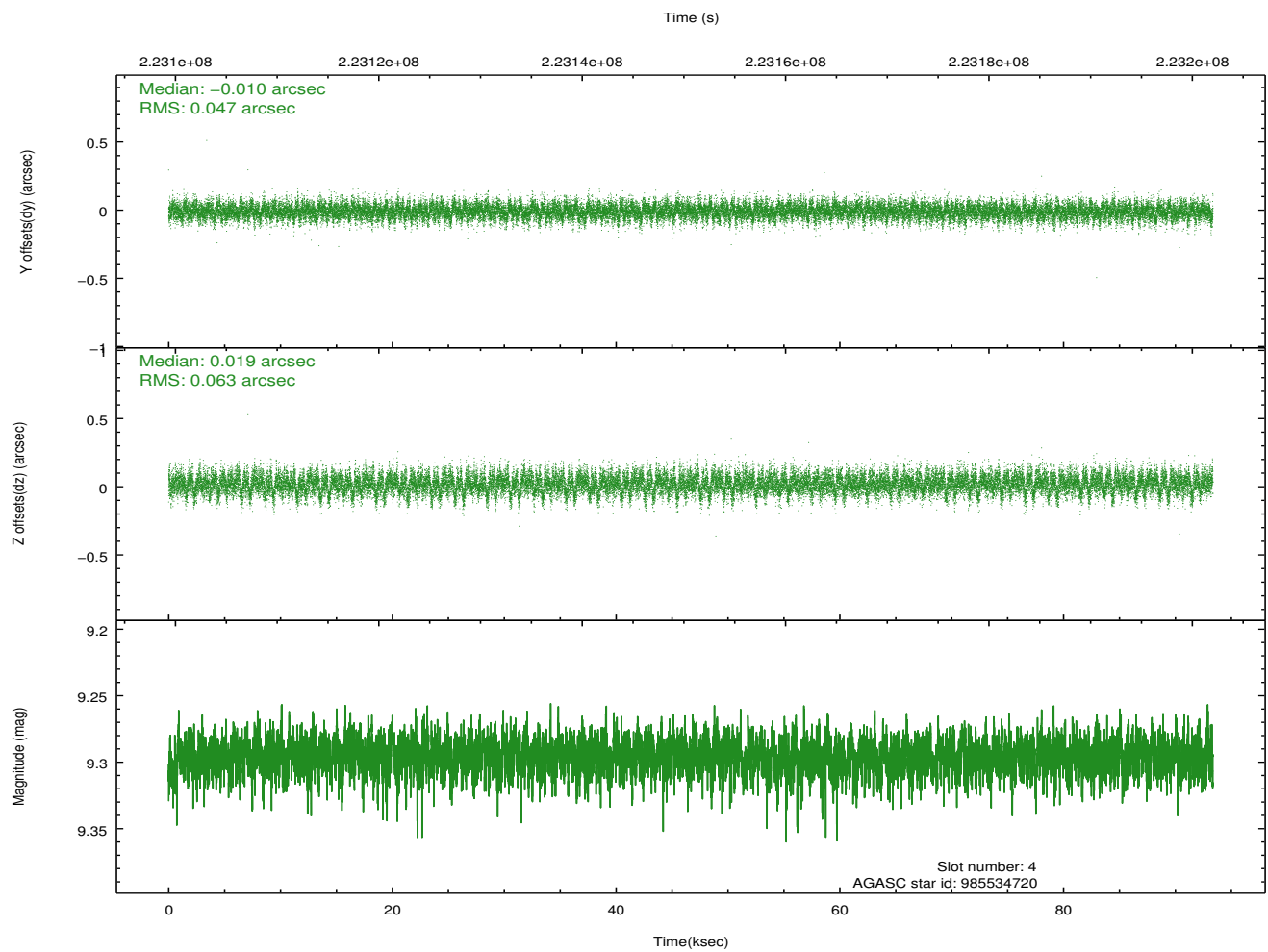
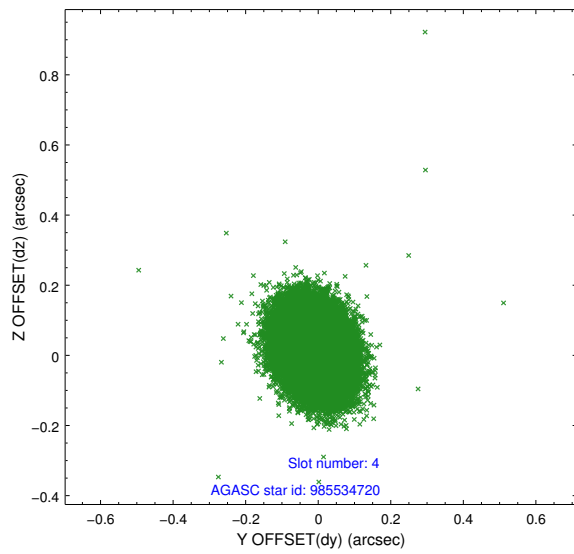
slot	status	id	mag	n_pts	med_dy	med_dz	dr1	dr2	ra	dec	mean_y	mean_z
0	FID	ACIS-S-1	7.18	22763	0.012	-0.086	0.010	0.046	0.000000	0.000000	937.03	-1728.74
1	FID	ACIS-S-4	7.20	22762	0.047	0.058	0.009	0.027	0.000000	0.000000	2154.46	175.63
2	FID	ACIS-S-5	7.23	22765	-0.084	0.040	0.007	0.027	0.000000	0.000000	-1812.01	169.17
3	GUIDE	985533504	8.22	45520	-0.011	-0.015	0.056	0.090	359.621834	-34.285981	-1799.43	965.01
4	GUIDE	985534720	9.30	45506	-0.010	0.019	0.083	0.137	358.560006	-34.718570	91.58	-1996.69
5	GUIDE	985536296	9.47	45421	-0.003	-0.007	0.101	0.166	358.653610	-34.417416	-1017.03	-1844.33
6	GUIDE	985538688	8.98	45514	-0.109	-0.048	0.117	0.181	359.925547	-34.998115	658.76	2122.06
7	GUIDE	985539832	9.38	45497	0.131	0.053	0.117	0.190	359.652112	-34.298072	-1765.51	1059.25

2.4 Star Slots

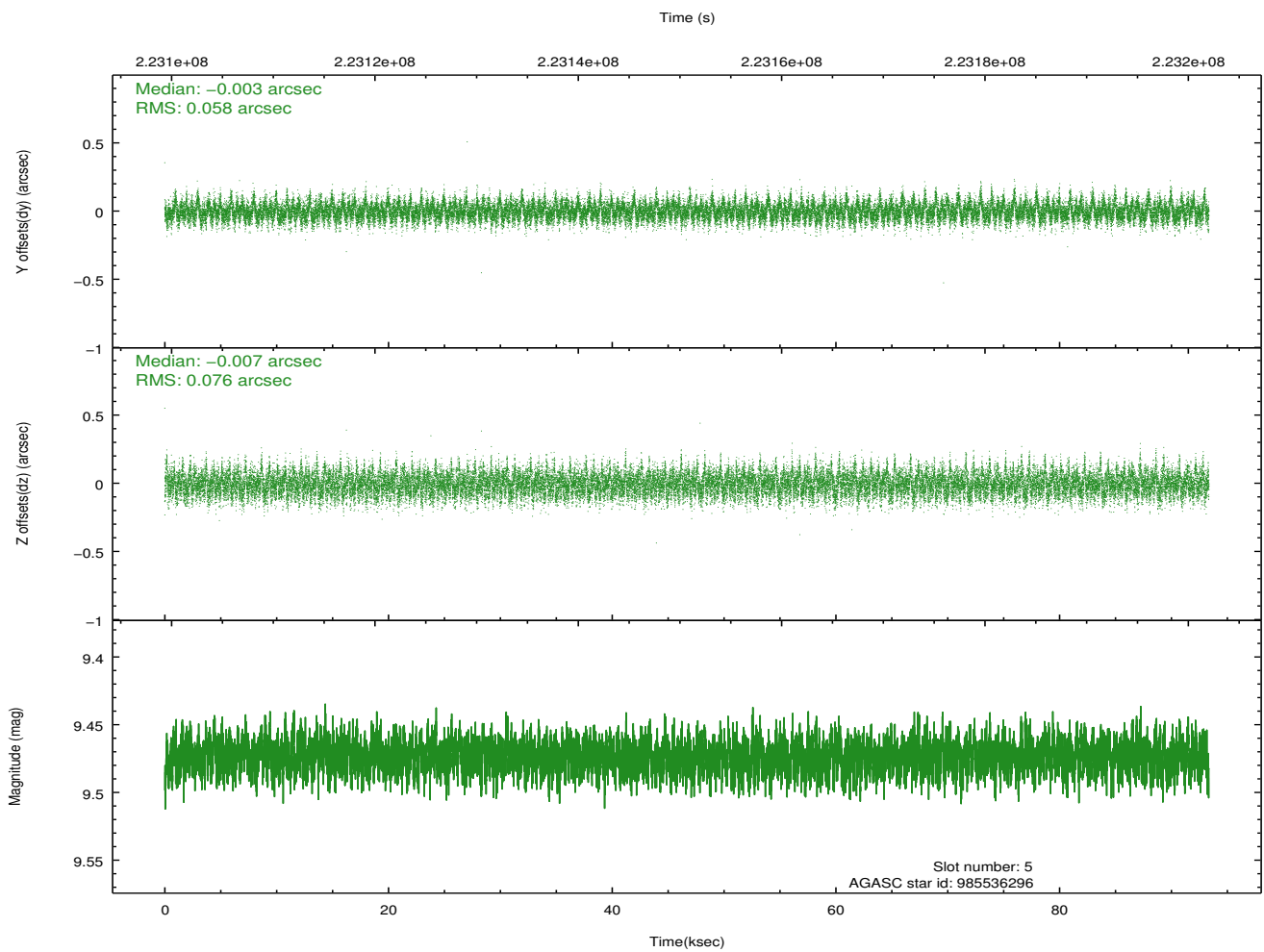
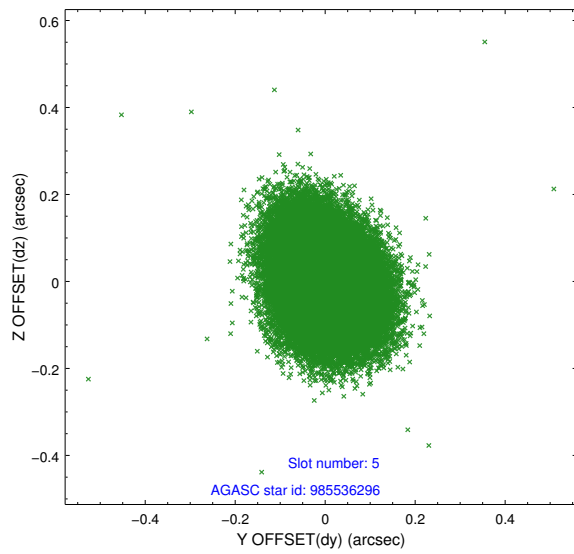
2.4.1 Slot 3



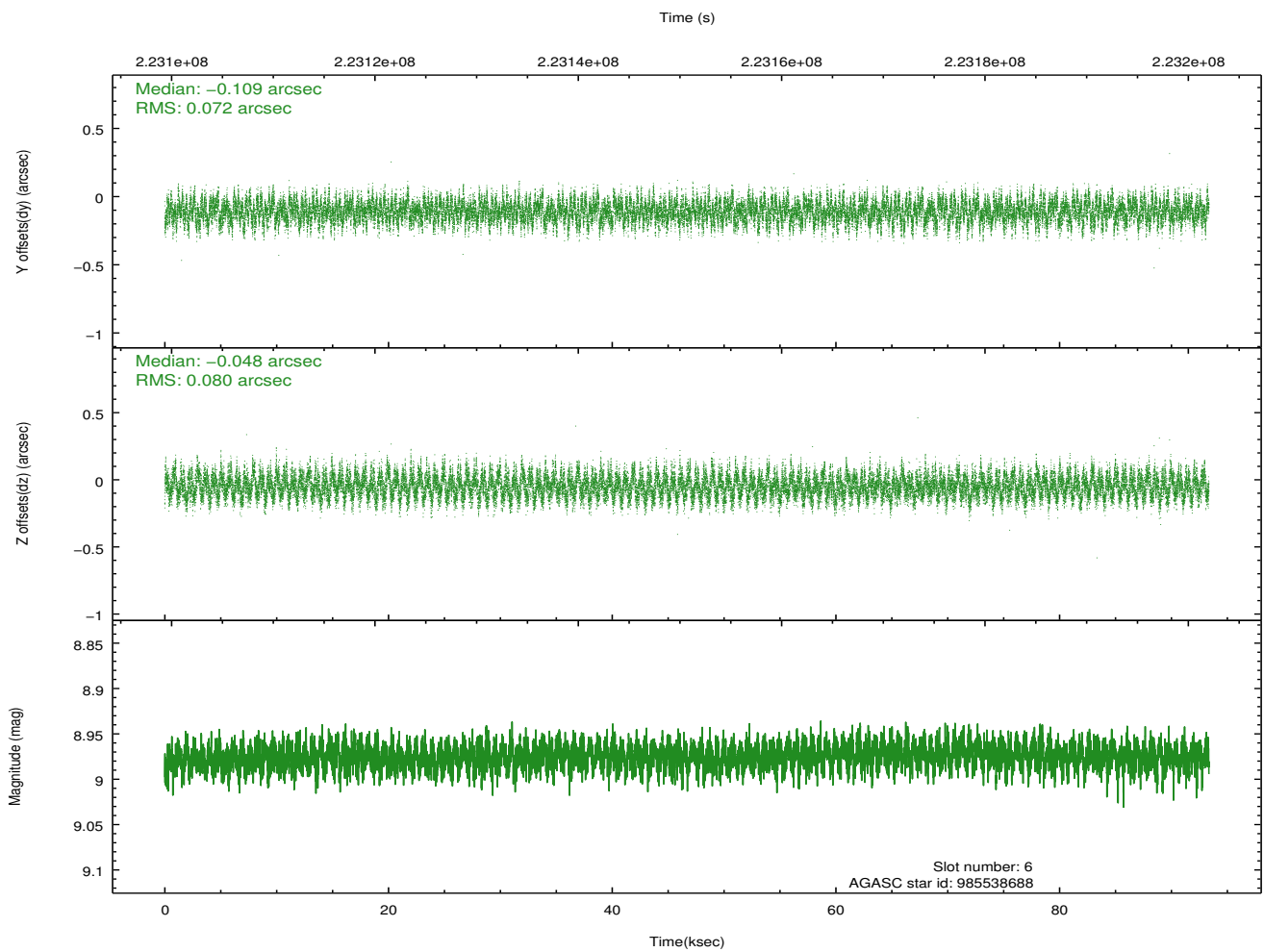
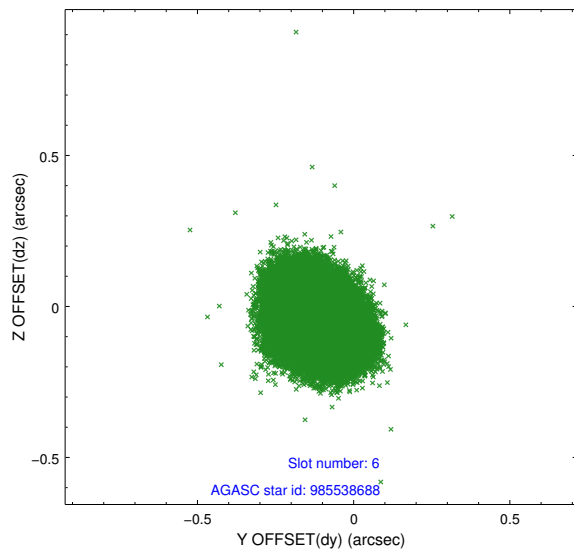
2.4.2 Slot 4



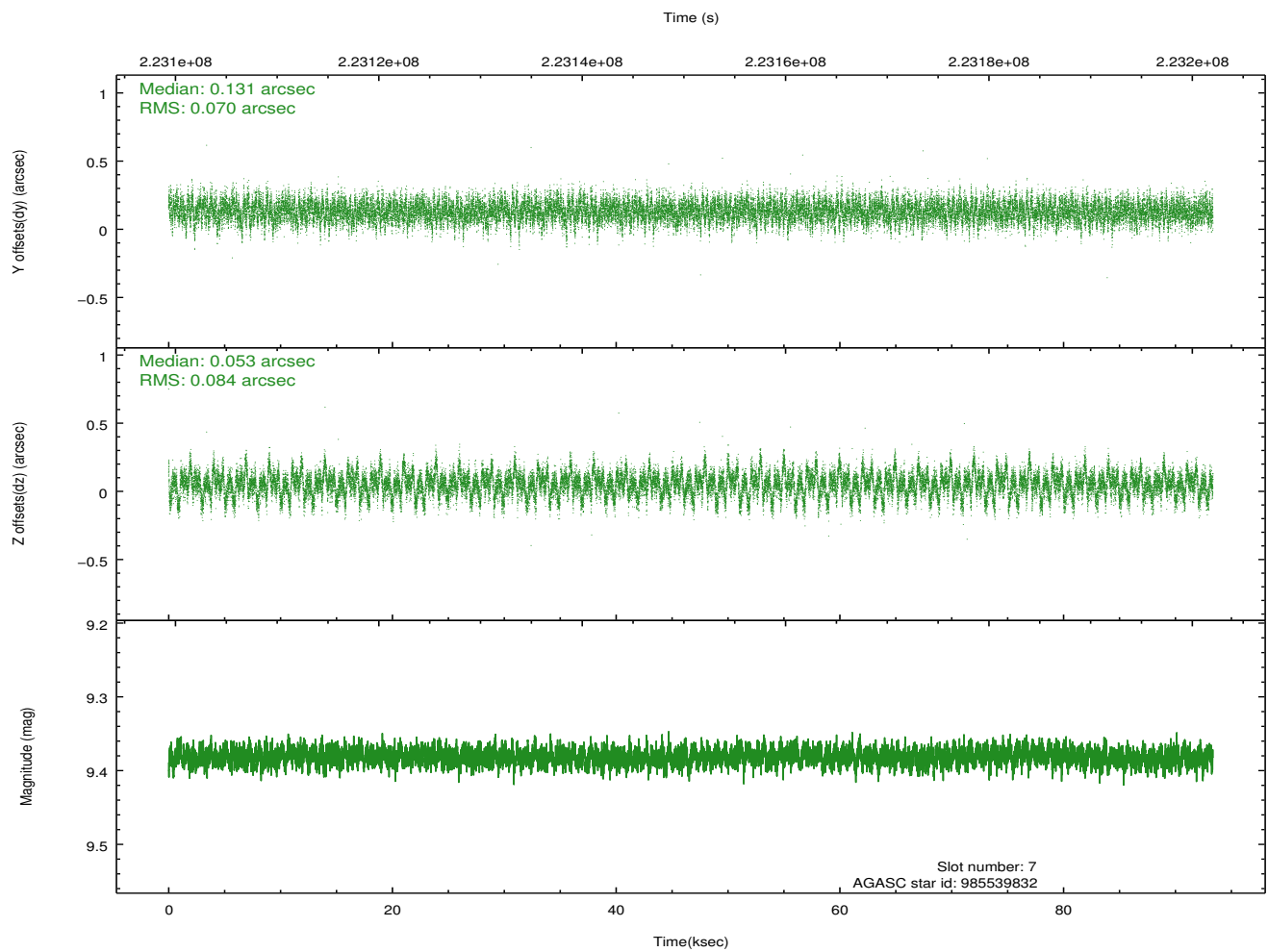
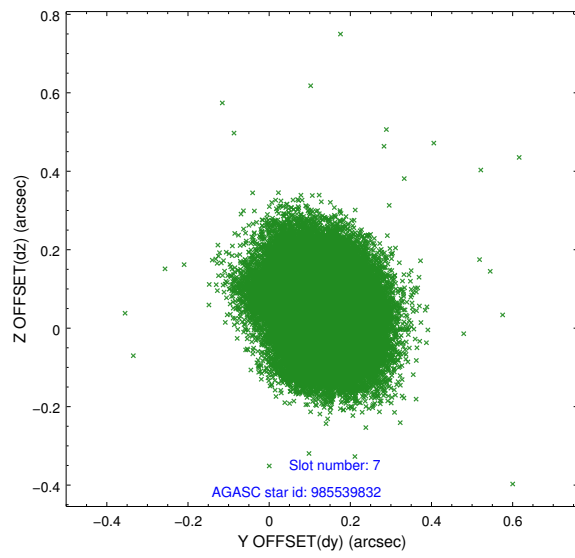
2.4.3 Slot 5



2.4.4 Slot 6

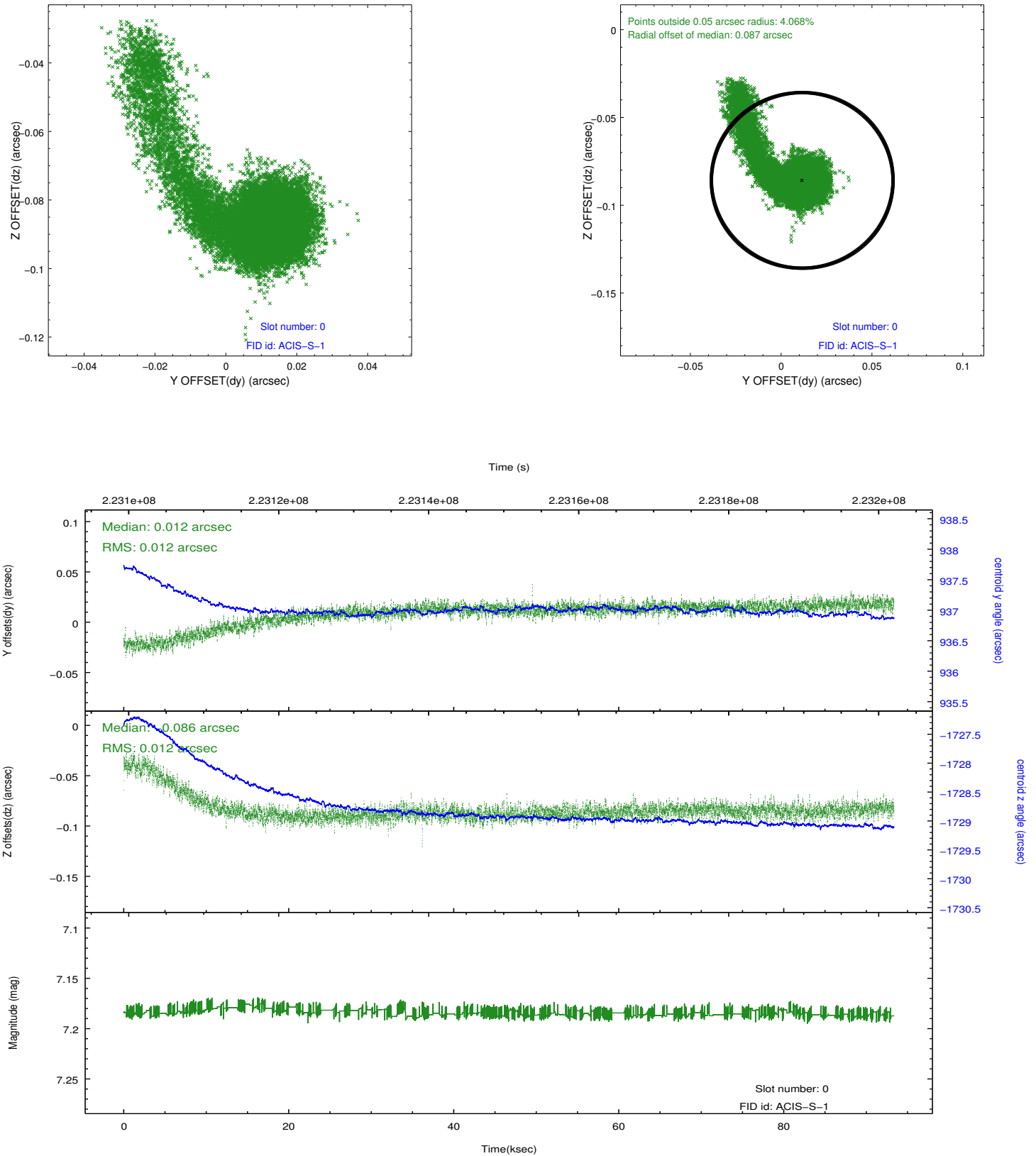


2.4.5 Slot 7

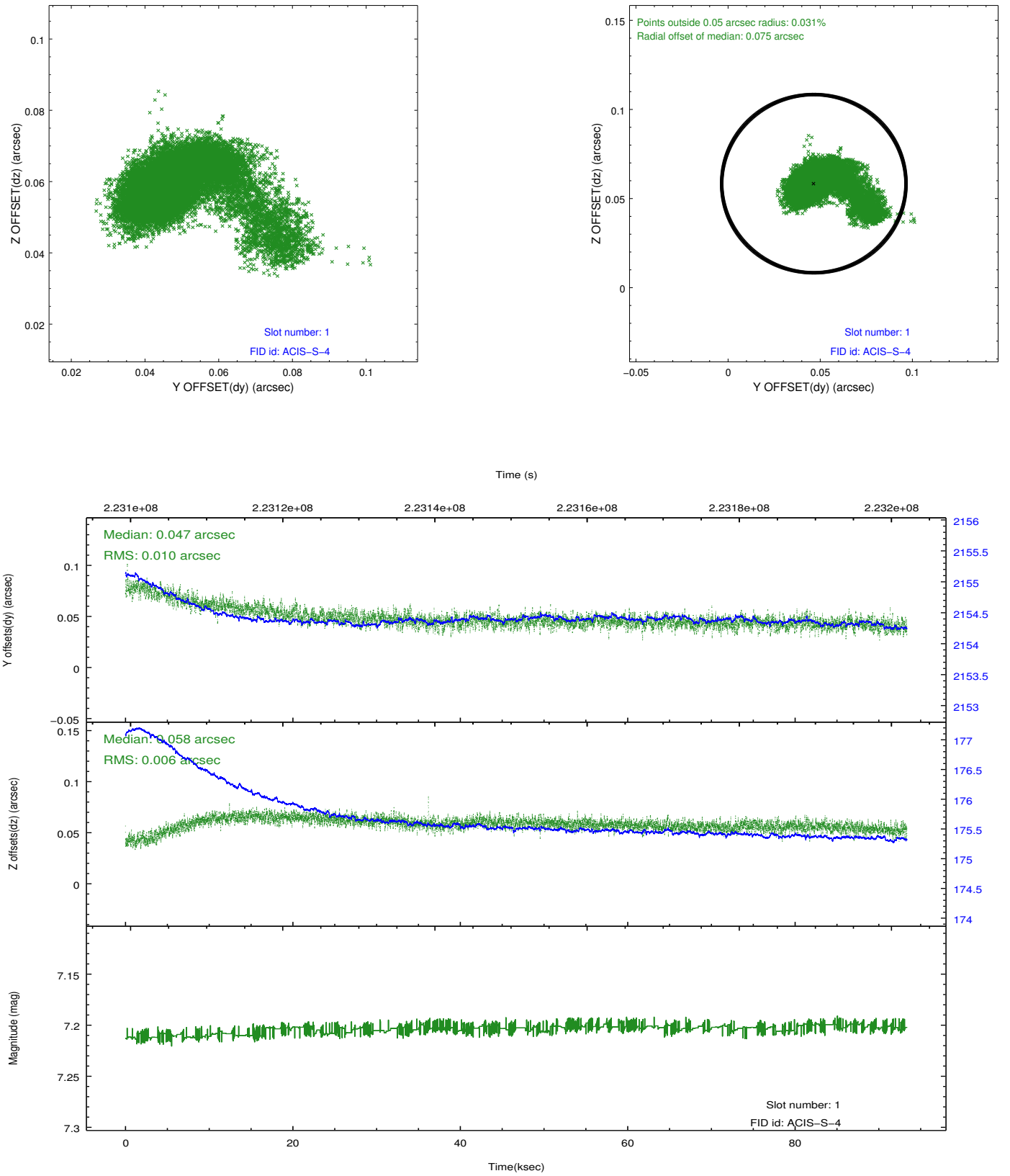


2.5 FID Slots

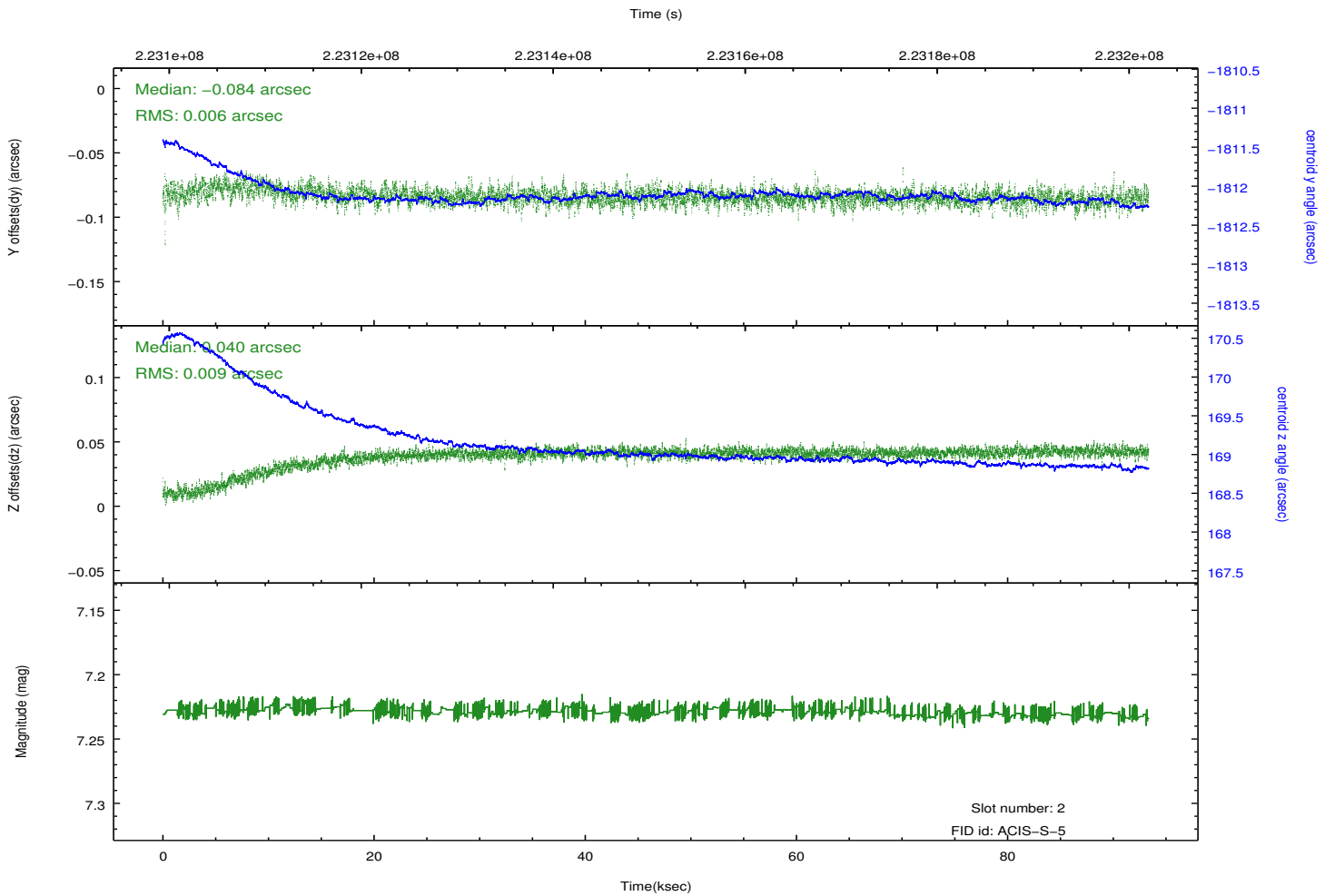
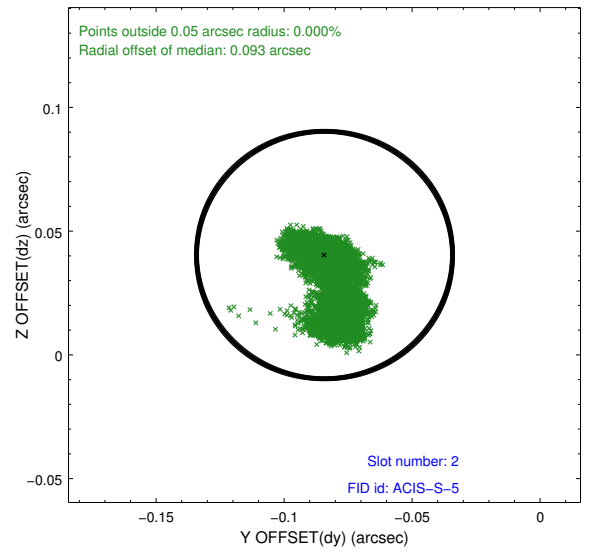
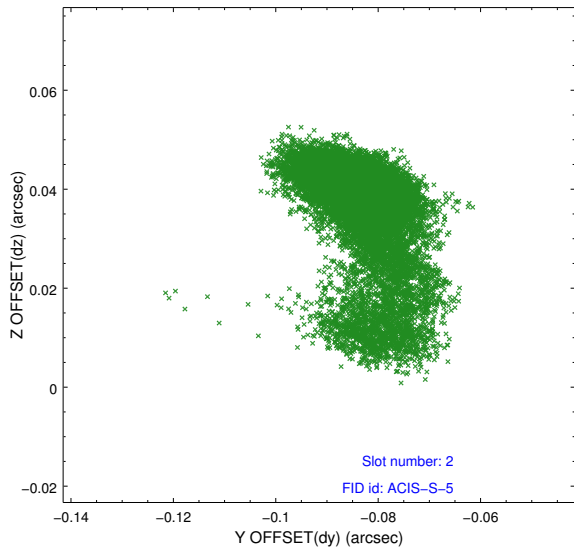
2.5.1 Slot 0



2.5.2 Slot 1



2.5.3 Slot 2



A Summary

A.1 Status

V&V Scientist	Jen Lauer
V&V Date (YYYY-MM-DD)	2013.01.09
V&V Edition	1
V&V Disposition and Status	OK
V&V Charge Time	93.34079

A.2 Comments