

V&V Reference Report

L2 ASCDS Version : 8.5.1.1

Observation 5795 - L2 Version 3
Chandra X-Ray Center

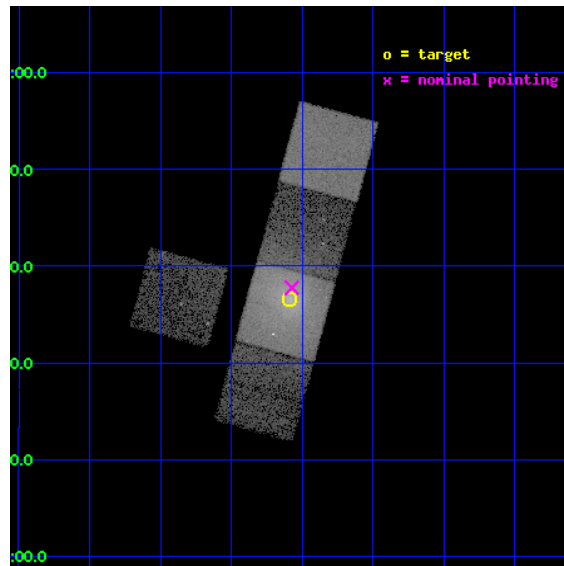
L2 Processing Date : Dec 21 2012

Contents

1	Front	2
2	OBI	3
2.1	OBI	3
2.1.1	Images	3
2.1.2	Bias	3
2.1.3	Parameters	4
2.1.4	Events	4
2.2	Compared Parameters	5
2.3	Aspect	6
2.4	Star Slots	9
2.4.1	Slot 3	9
2.4.2	Slot 4	10
2.4.3	Slot 5	11
2.4.4	Slot 6	12
2.4.5	Slot 7	13
2.5	FID Slots	14
2.5.1	Slot 0	14
2.5.2	Slot 1	15
2.5.3	Slot 2	16
A	Summary	17
A.1	Status	17
A.2	Comments	17

1 Front

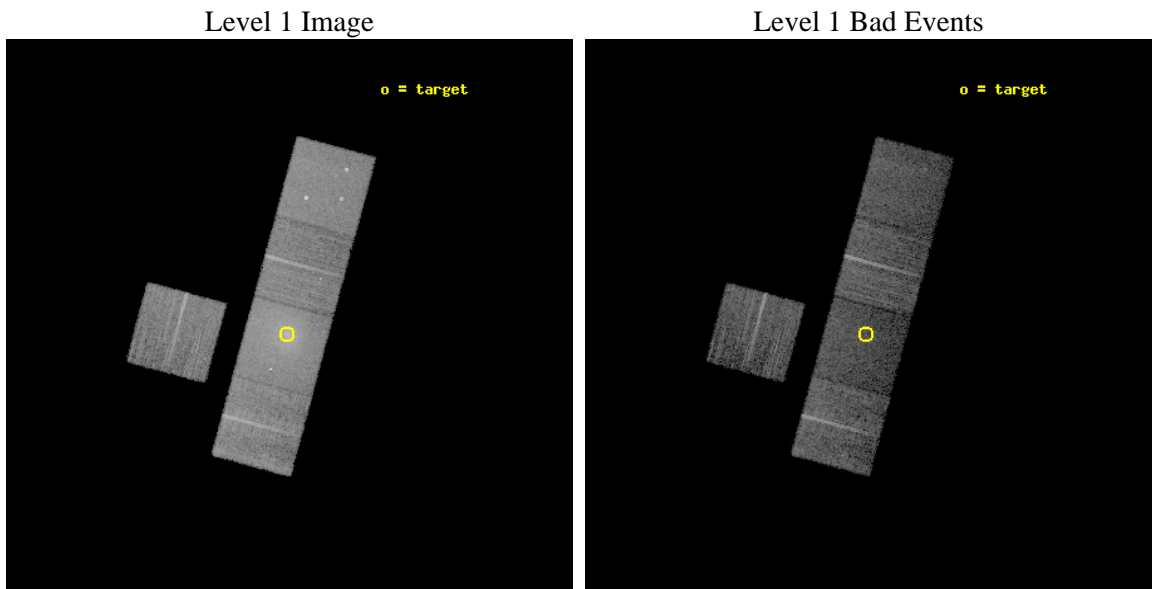
seq_num	800508	Sequence number
obs_id	5795	Observation id
title	The Interaction between Cluster Central Radio Sources and Cooling Flows	Proposal title
observer	Dr. CRAIG SARAZIN	Principal investigator
object	A2063	Source name
dtcycle	0	
cycle	P	events from which exps? Prim/Second/Both
ra_targ	230.772083	Observer's specified target RA [deg]
dec_targ	8.608861	Observer's specified target Dec [deg]
ra_nom	230.76824532116	Nominal RA [deg]
dec_nom	8.6293016617113	Nominal Dec [deg]
roll_nom	105.15718988959	Nominal Roll [deg]
revision	3	Processing version of data
ontime	10037.632725239	Sum of GTIs [s]
livetime	9906.4836640858	Livetime [s]
ontime3	10037.509605229	Sum of GTIs [s]
ontime5	10037.591685236	Sum of GTIs [s]
ontime6	10037.550645232	Sum of GTIs [s]
ontime7	10037.632725239	Sum of GTIs [s]
ontime8	10034.327584982	Sum of GTIs [s]
l2events	143685	Number of level 2 events



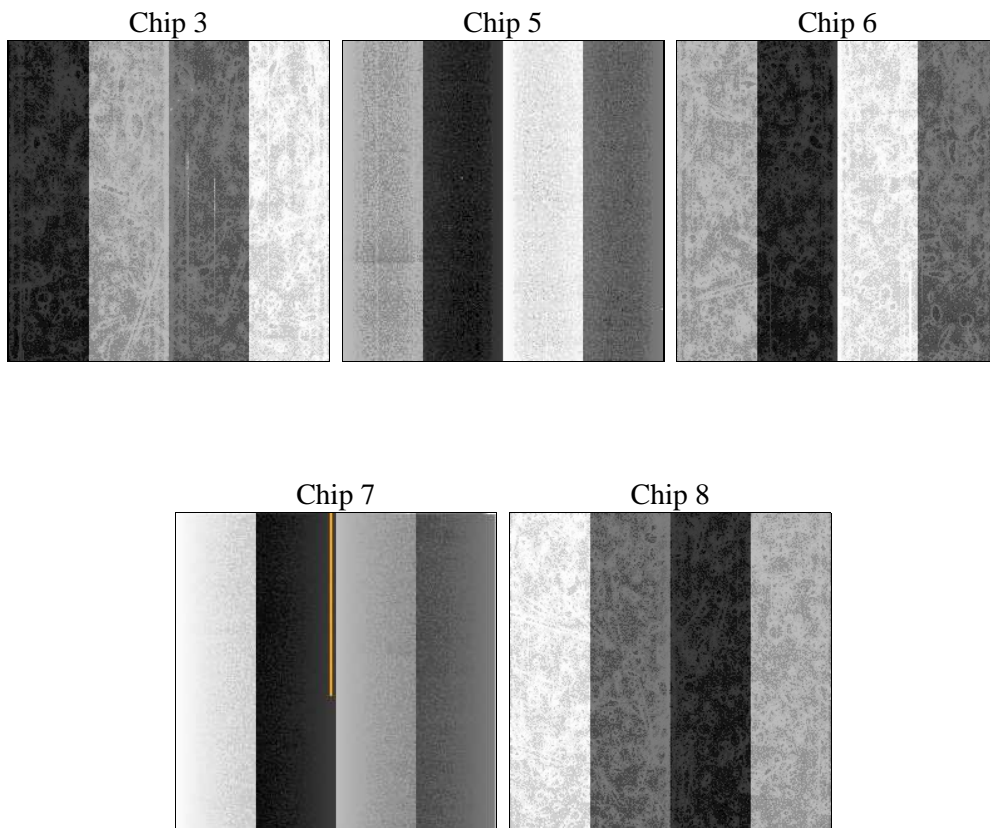
2 OBI

2.1 OBI

2.1.1 Images



2.1.2 Bias



2.1.3 Parameters

obi_num	0	Obi number	sched_exp_time	10000.000000	[s] Scheduled observation exposure time
ascdsver	8.5.1.1	Processing system revision	ontime	10037.632725239	Sum of GTIs [s]
caldsver	4.5.5	 	ontime3	10037.509605229	Sum of GTIs [s]
date	2012-12-21T16:05:53	Date and time of file creation	ontime5	10037.591685236	Sum of GTIs [s]
revision	3	Processing version of data	ontime6	10037.550645232	Sum of GTIs [s]
			ontime7	10037.632725239	Sum of GTIs [s]
			ontime8	10034.327584982	Sum of GTIs [s]
			l1events	421892	Number of level 1 events

2.1.4 Events

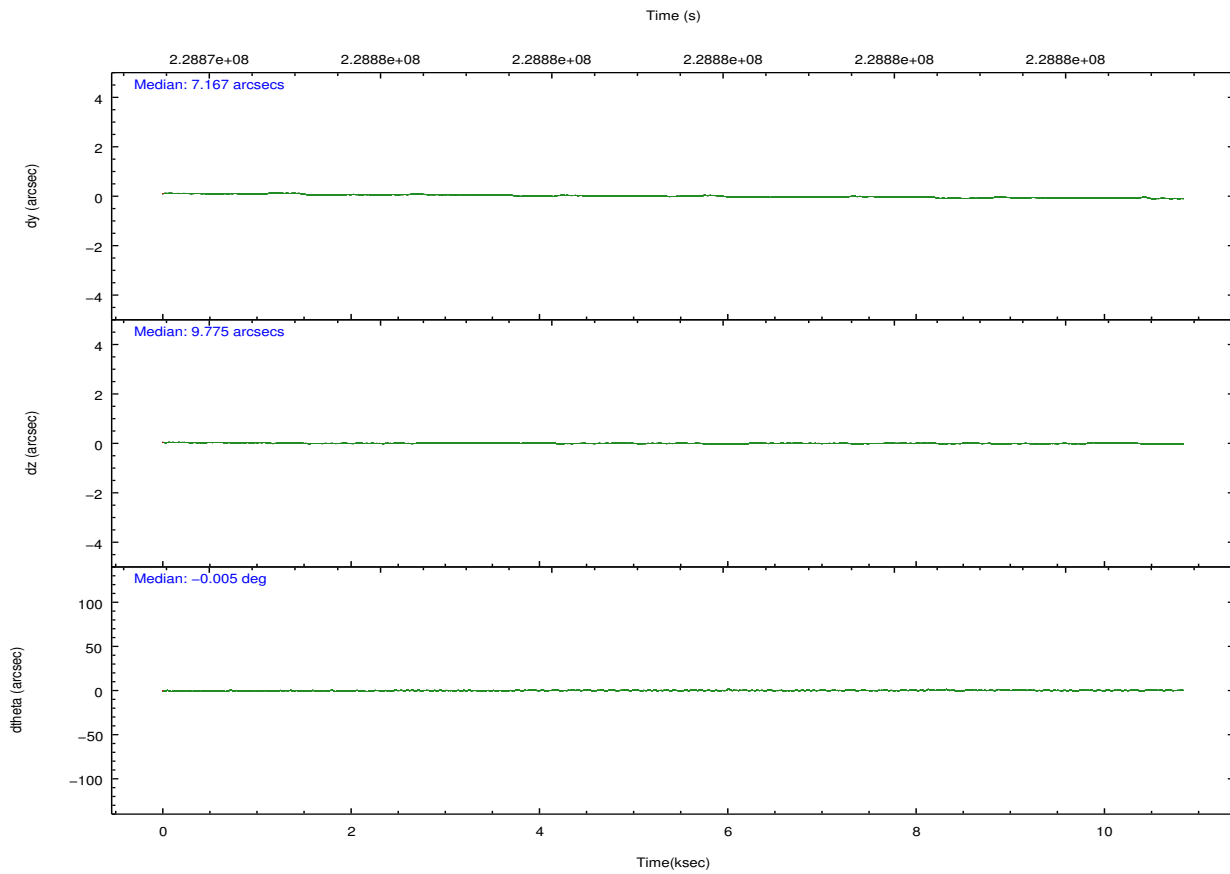
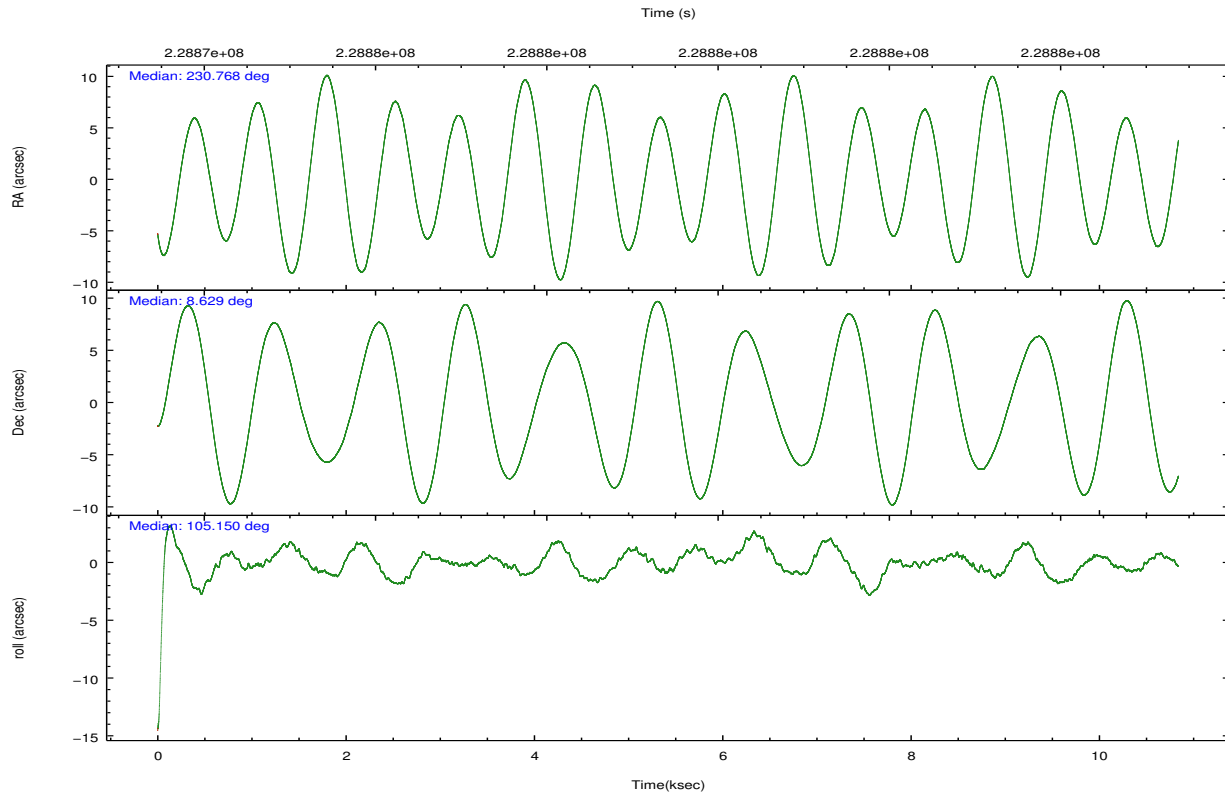
	ccd 3	ccd 5	ccd 6	ccd 7	ccd 8
level 1 events	63289	88462	72114	116601	81426
rejected events	56072	43401	58989	38993	61599
rejected %	88%	49%	81%	33%	75%

	ccd 3	ccd 5	ccd 6	ccd 7	ccd 8
grade 0 events	3182	6675	7760	17422	7164
	5%	7%	10%	14%	8%
grade 1 events	33	186	50	82	72
	0%	0%	0%	0%	0%
grade 2 events	1433	12555	2074	18521	4230
	2%	14%	2%	15%	5%
grade 3 events	701	1945	887	8390	1940
	1%	2%	1%	7%	2%
grade 4 events	693	1875	894	8100	1842
	1%	2%	1%	6%	2%
grade 5 events	2481	6872	2606	7643	3691
	3%	7%	3%	6%	4%
grade 6 events	1212	22021	1513	25200	4655
	1%	24%	2%	21%	5%
grade 7 events	53554	36333	56330	31243	57832
	84%	41%	78%	26%	71%

2.2 Compared Parameters

Parameter	Planned	Actual	Parameter	Planned	Actual
Instrument	ACIS	ACIS	Obspar format version number	7	7
Detector	ACIS-35678	ACIS-35678	Obspar file type	PREDICTED	ACTUAL
Grating	NONE	NONE	Obspar update status	NONE	UPDATED
Data mode	VFAINT	VFAINT	Number of optional ACIS chips dropped	0	0
Observation mode	POINTING	POINTING	On-chip summing requested	N	N
[deg] Pointing RA	230.788090	230.7682453211625	Subarray requested	NONE	NONE
[deg] Pointing Dec	8.610335	8.629301661711317	Alternating exposures requested	N	N
[deg] Pointing Roll	104.997600	105.1571898895876	[s] Primary exposure time	0.000000	3.1
[mm] SIM focus pos	-0.684267	-0.6828225247311905			
[mm] SIM defocus	0	0.001444936568705701			
[mm] SIM translation stage pos	-190.132523	-190.1400660498719			
[mm] SIM translation stage offset	0	0.00754346686406393			
[s] Observation start time (MET)	228874839.184000	228873582.69662			
Observation start date	2005-04-03T00:19:35	2005-04-02T23:59:42			
[s] Observation end time (MET)	228884839.184000	228885561.87216			
Observation end date	2005-04-03T03:06:15	2005-04-03T03:19:21			
Read mode	TIMED	TIMED			

2.3 Aspect

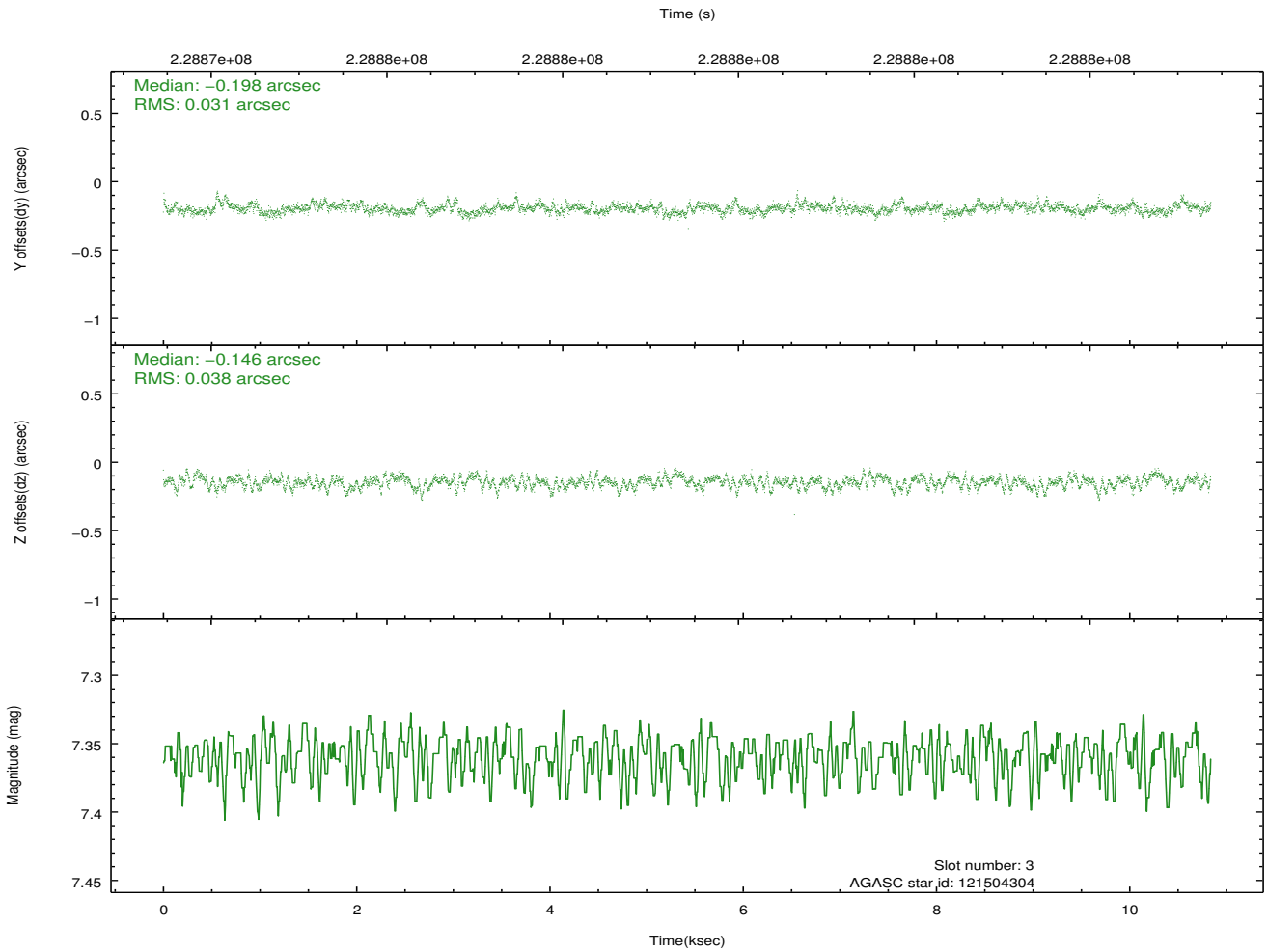
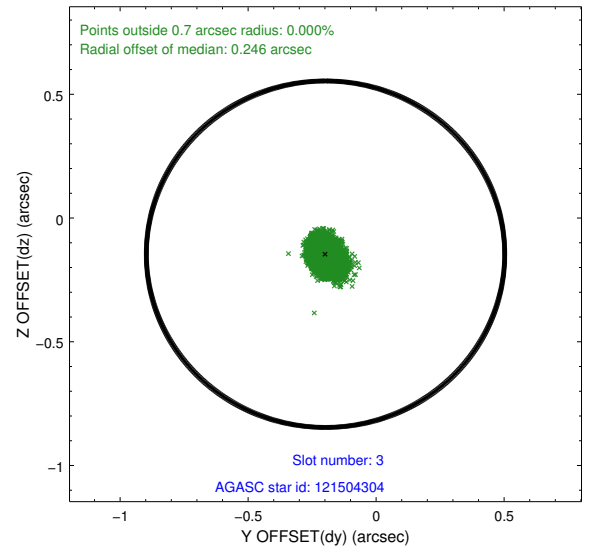
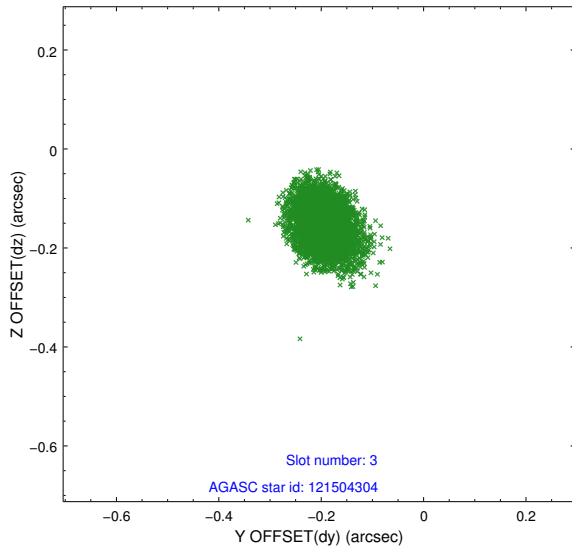


Slot Statistics

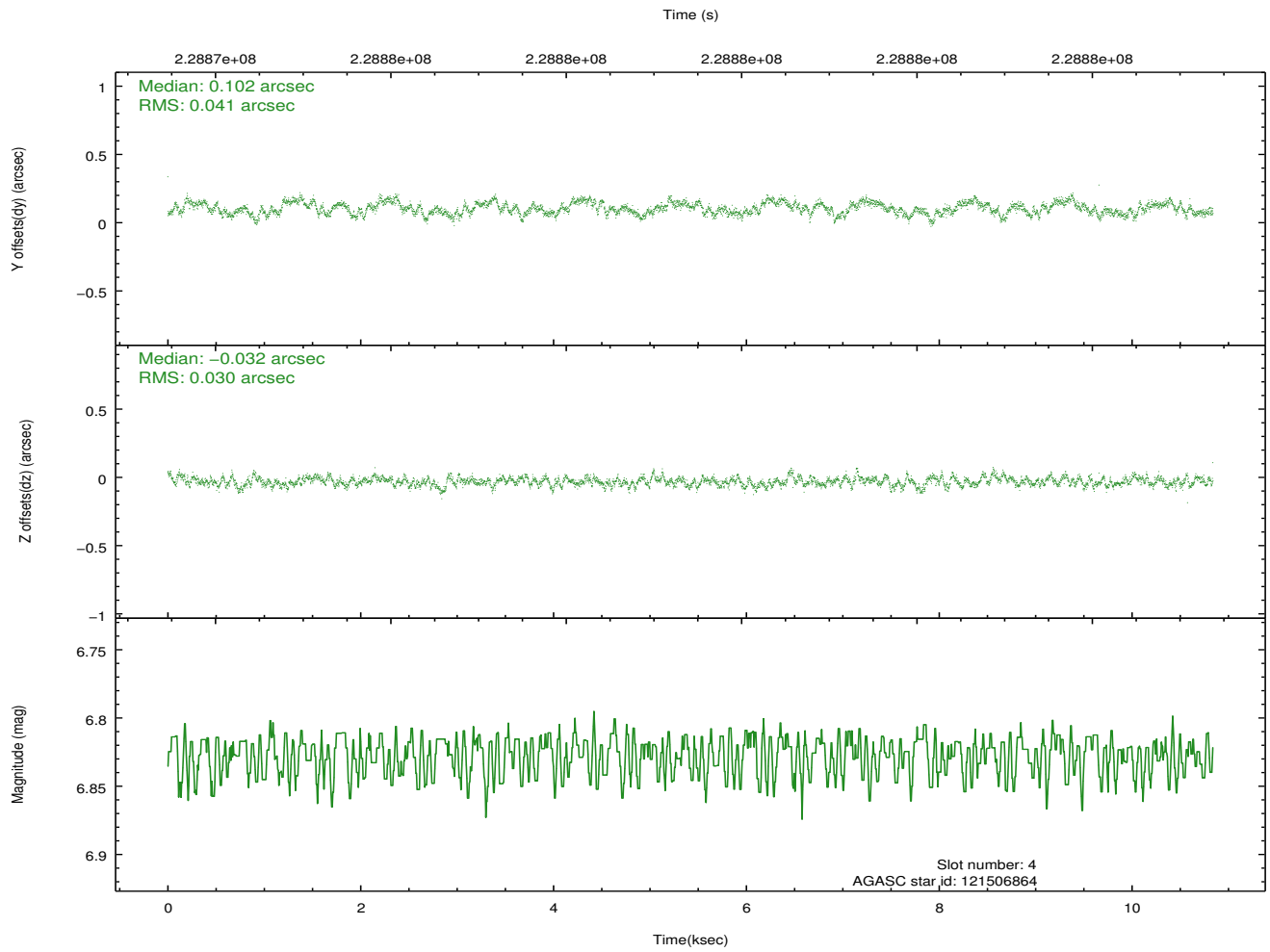
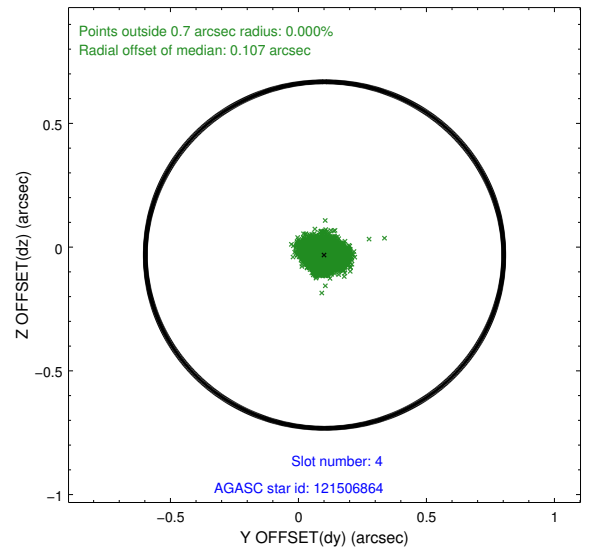
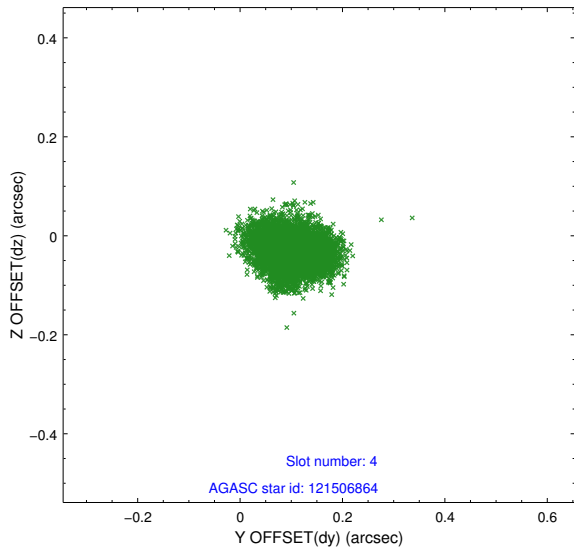
slot	status	id	mag	n_pts	med_dy	med_dz	dr1	dr2	ra	dec	mean_y	mean_z
0	FID	ACIS-S-2	7.10	2645	-0.056	-0.039	0.007	0.011	0.000000	0.000000	-759.95	-1731.07
1	FID	ACIS-S-4	7.21	2645	0.115	0.037	0.006	0.010	0.000000	0.000000	2153.25	177.05
2	FID	ACIS-S-5	7.24	2644	-0.091	0.010	0.007	0.012	0.000000	0.000000	-1812.25	171.16
3	GUIDE	121504304	7.36	5288	-0.198	-0.146	0.052	0.087	230.179446	8.913720	1616.52	1807.89
4	GUIDE	121506864	6.83	5288	0.102	-0.032	0.055	0.086	231.000457	8.905840	832.93	-1004.55
5	GUIDE	121507480	8.81	5288	0.119	-0.115	0.068	0.110	230.407322	8.449858	-206.38	1459.13
6	GUIDE	121508304	7.54	5288	-0.254	0.085	0.067	0.107	231.074833	9.087473	1395.74	-1428.74
7	GUIDE	121506400	9.05	5277	0.231	0.207	0.089	0.148	231.447386	8.409178	-1304.39	-2081.38

2.4 Star Slots

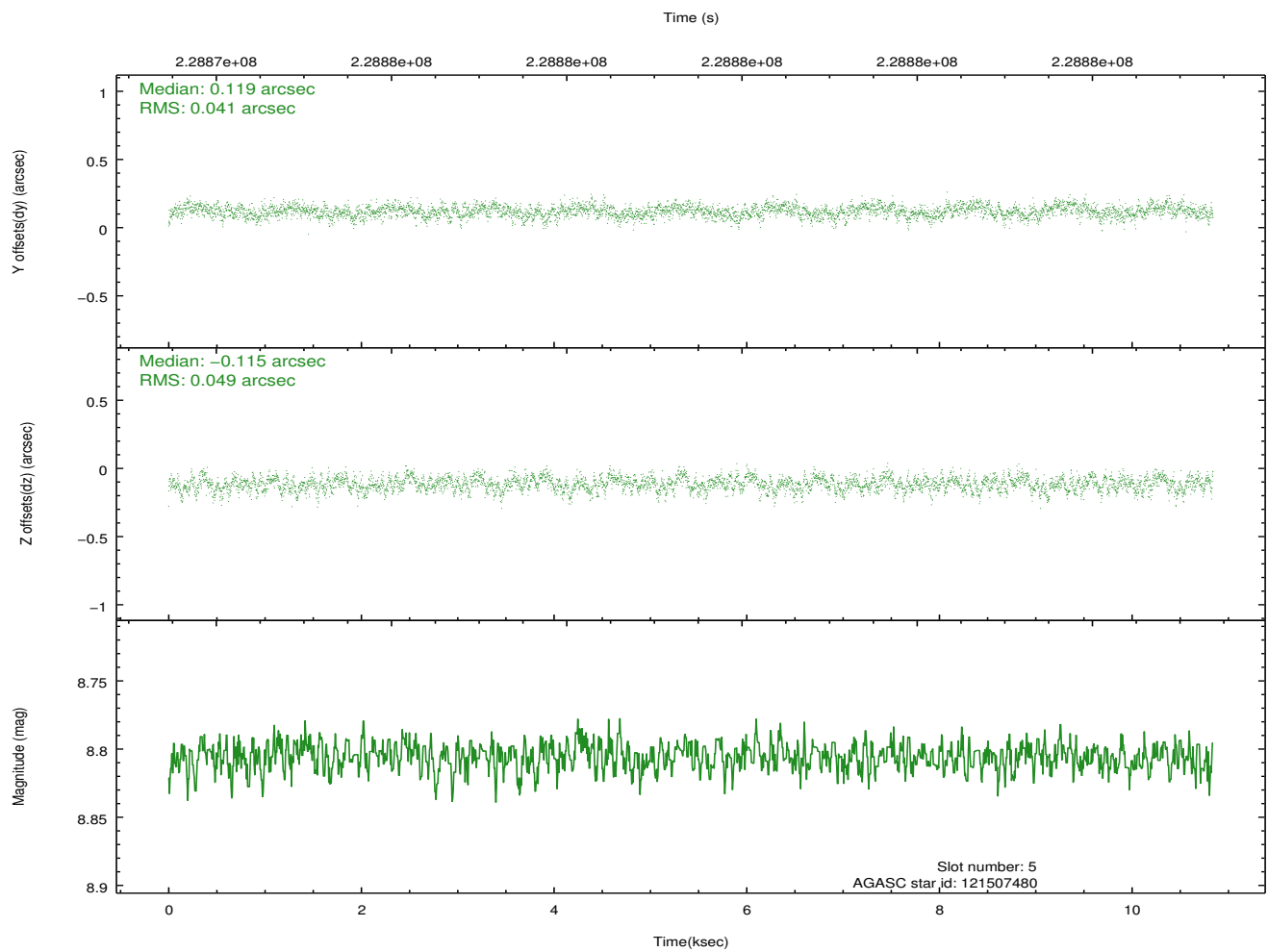
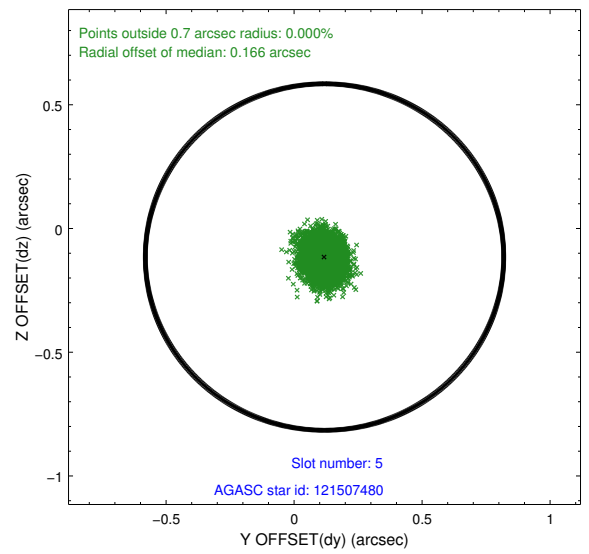
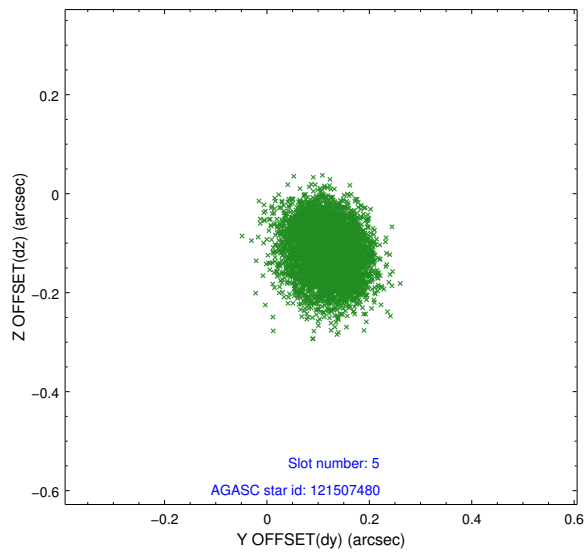
2.4.1 Slot 3



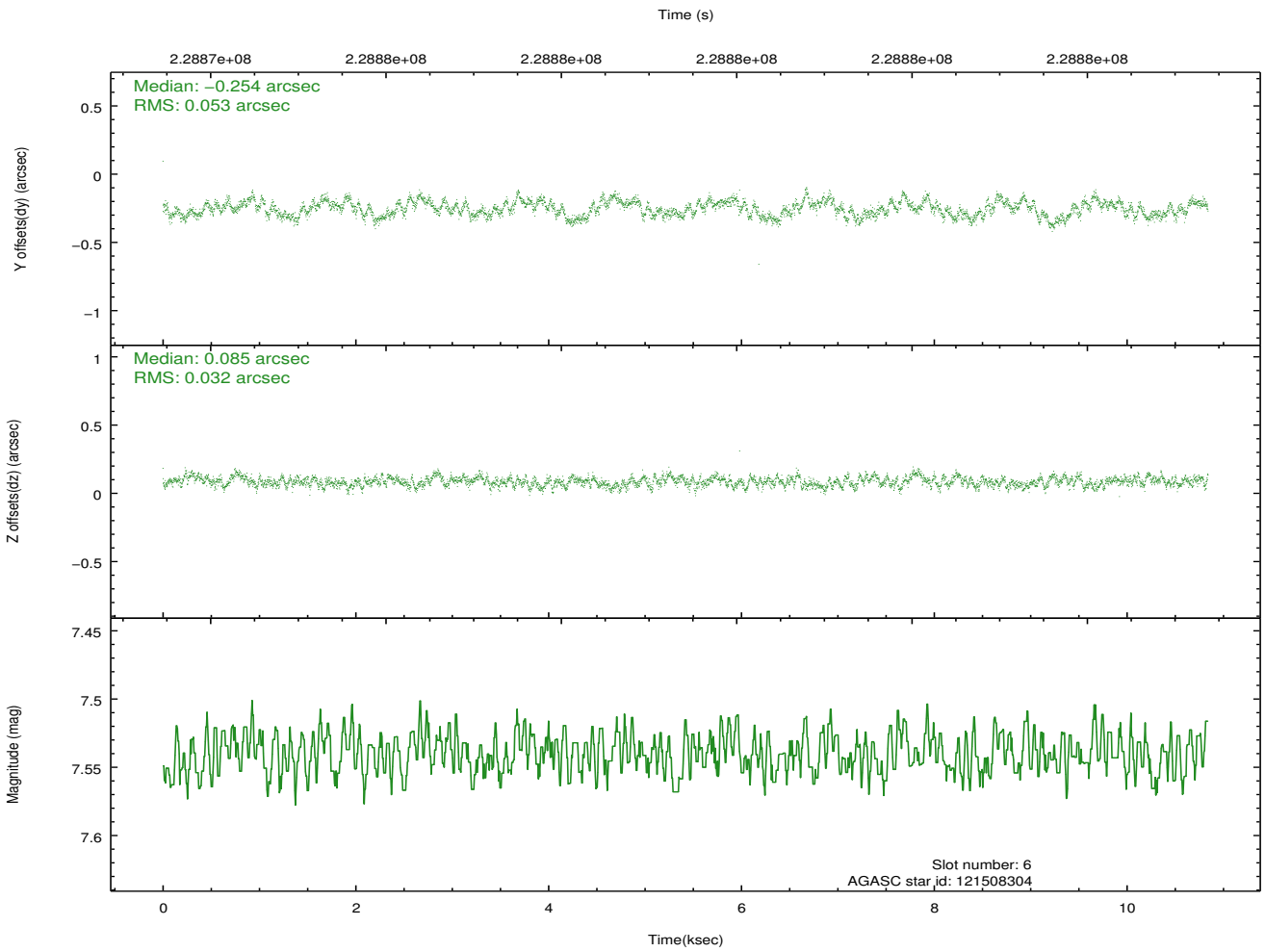
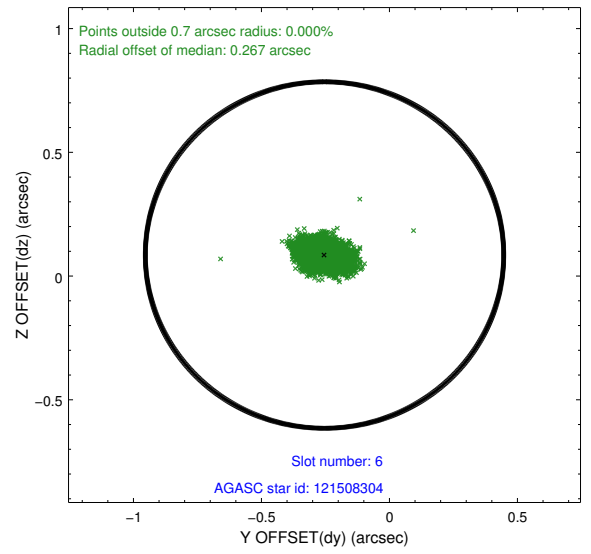
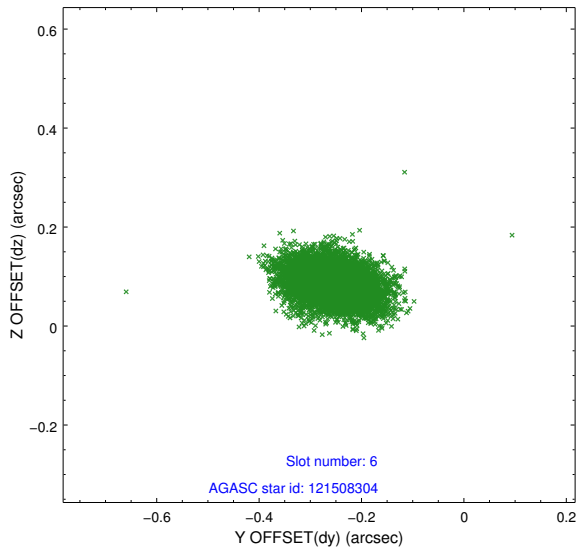
2.4.2 Slot 4



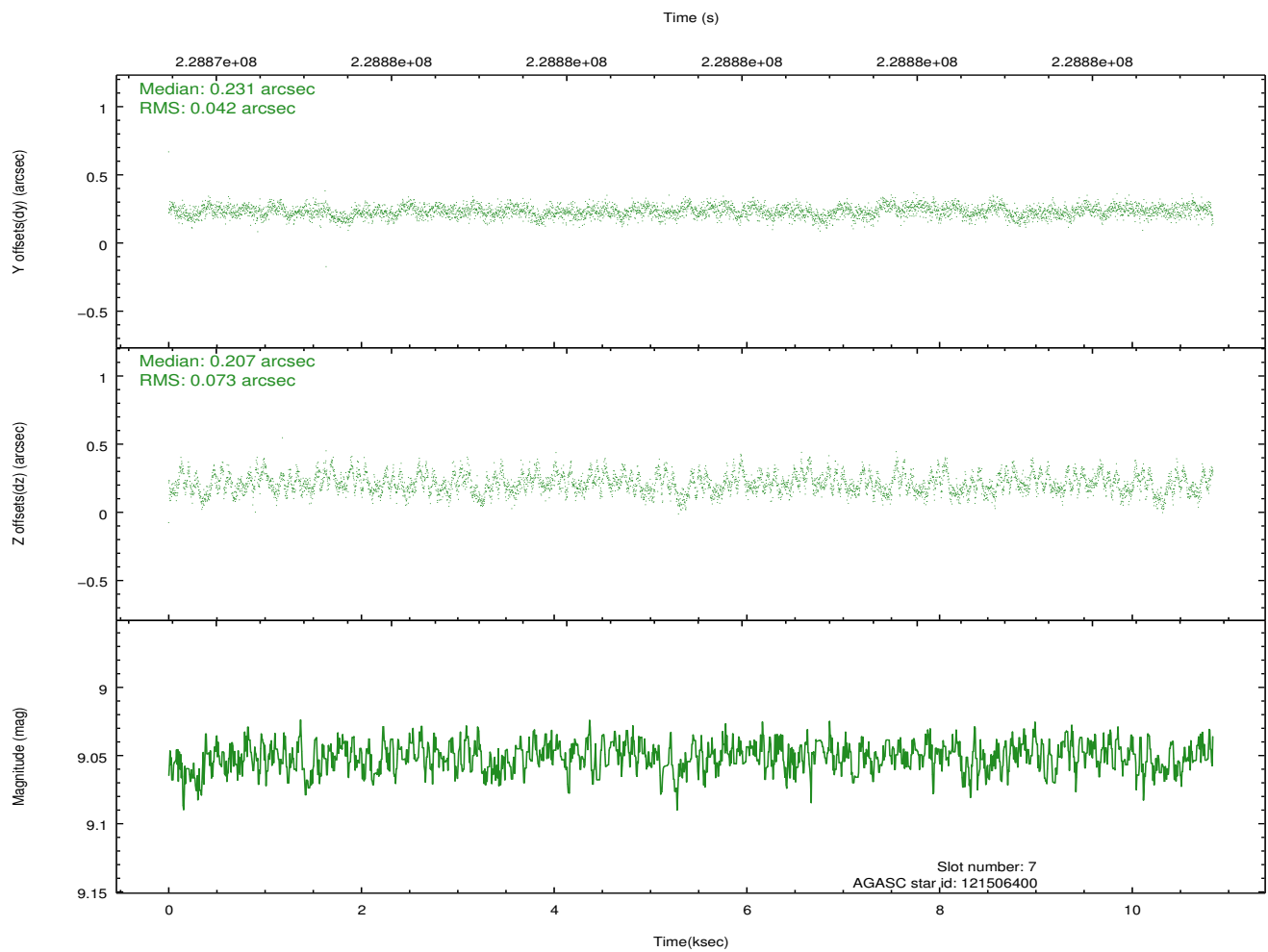
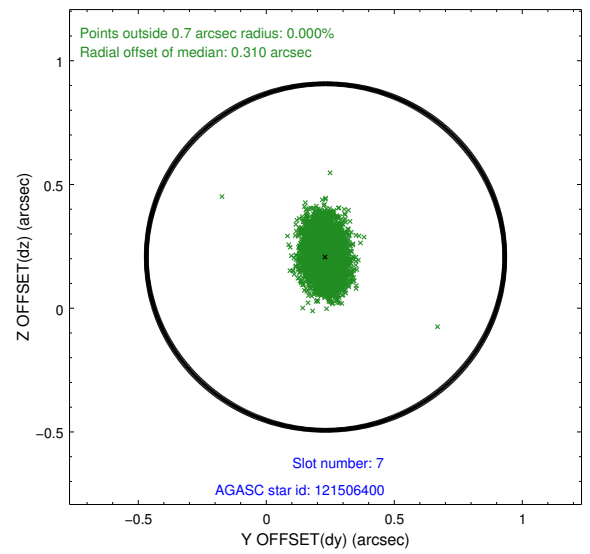
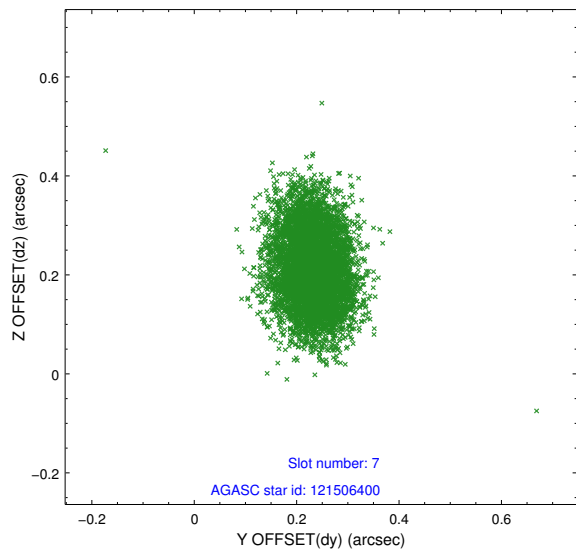
2.4.3 Slot 5



2.4.4 Slot 6

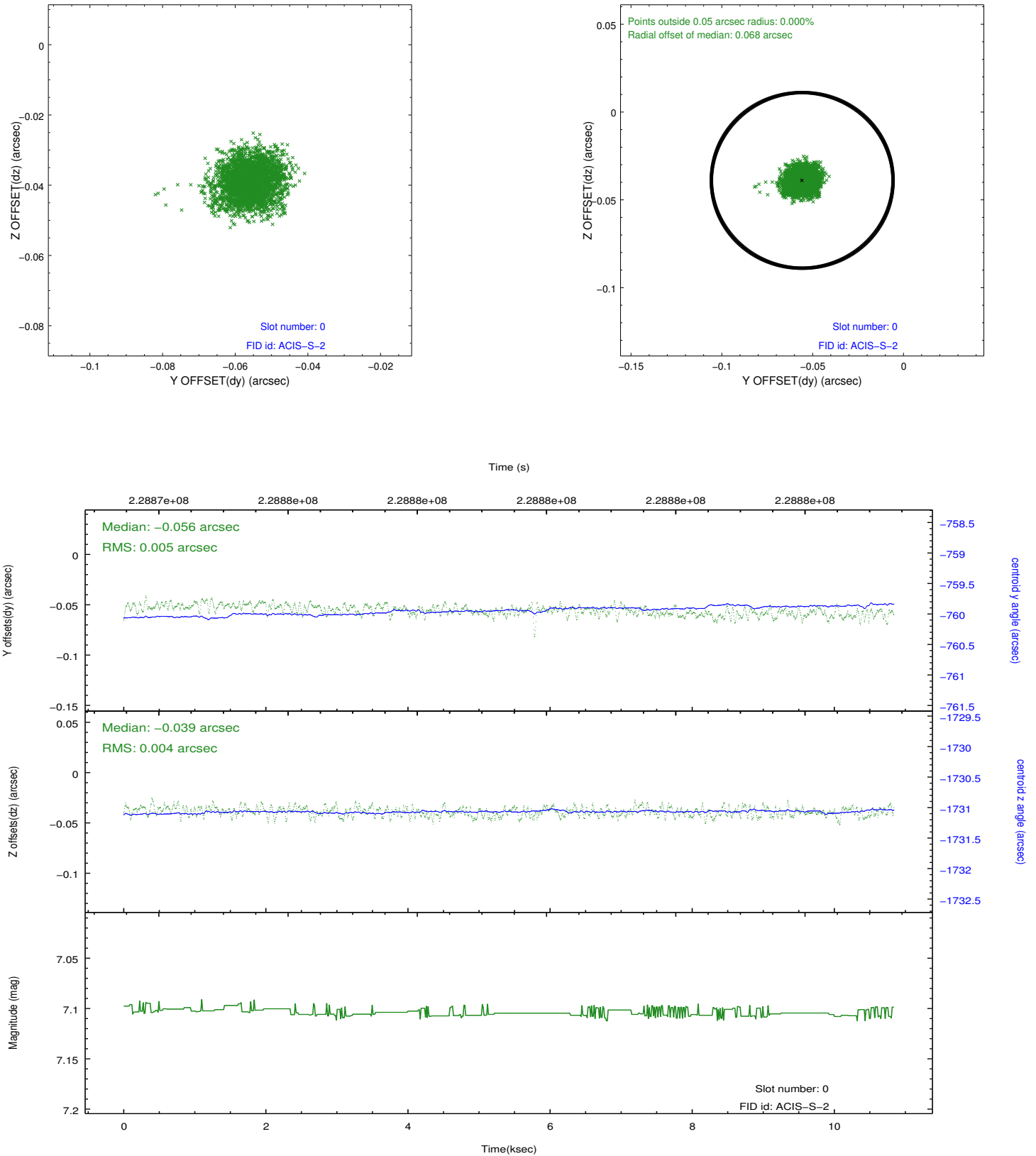


2.4.5 Slot 7

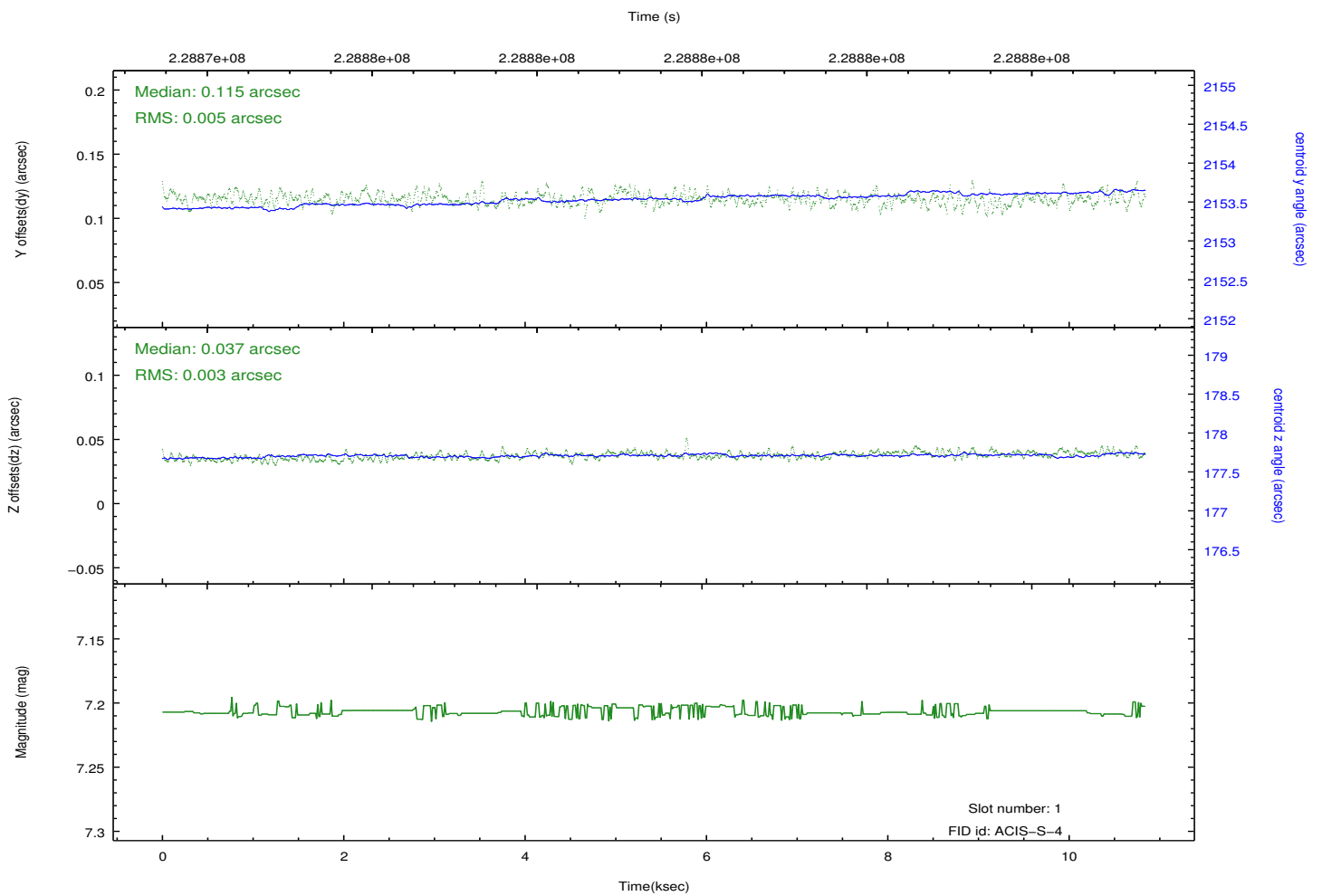
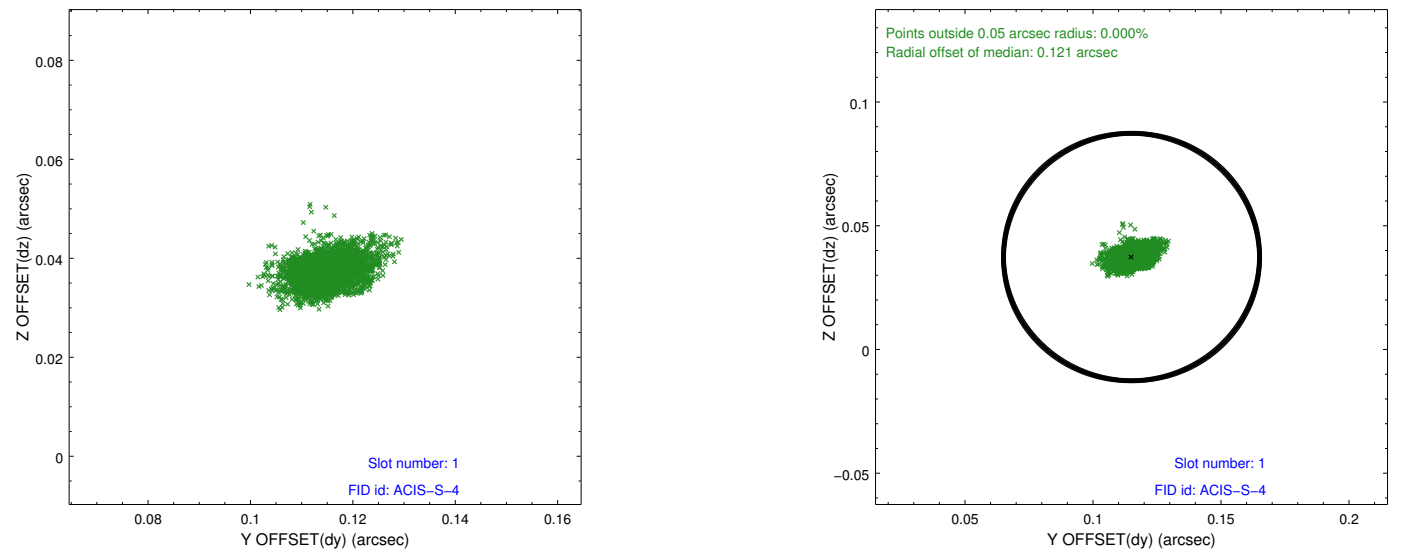


2.5 FID Slots

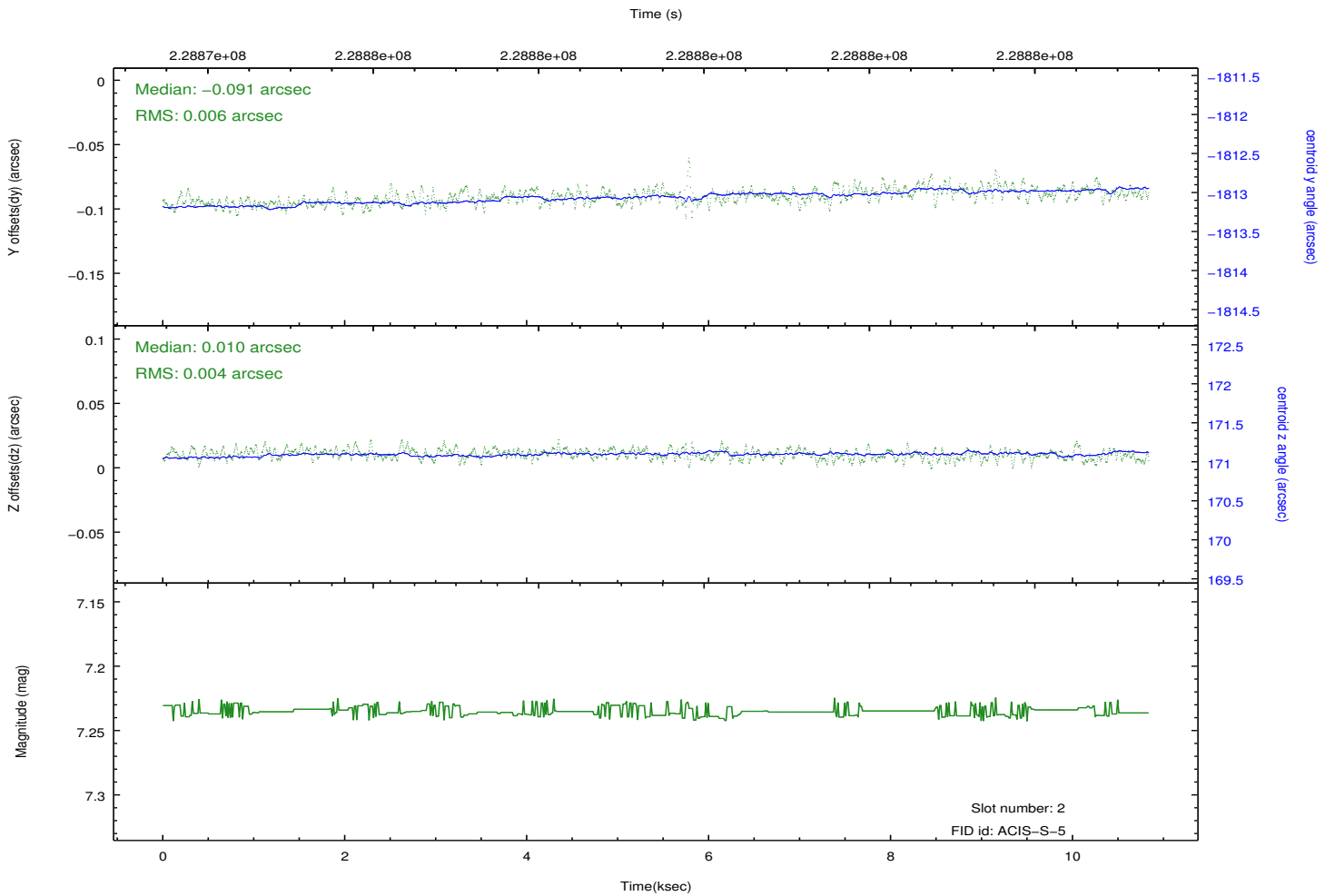
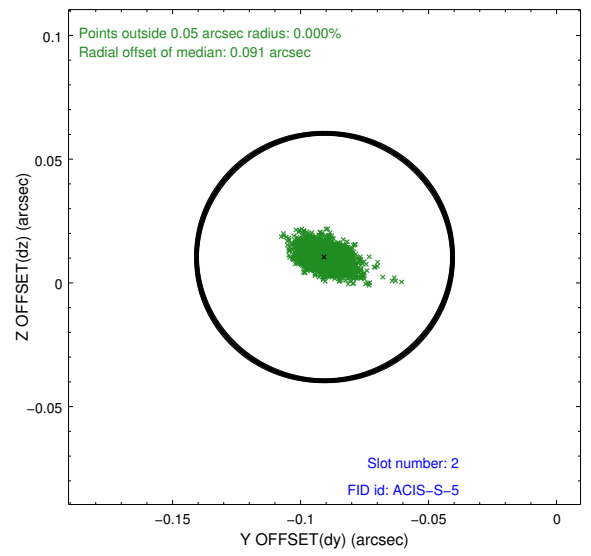
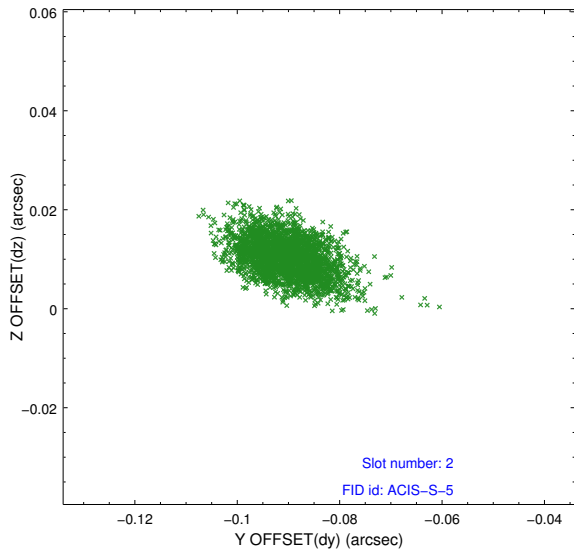
2.5.1 Slot 0



2.5.2 Slot 1



2.5.3 Slot 2



A Summary

A.1 Status

V&V Scientist	Jen Lauer
V&V Date (YYYY-MM-DD)	2013.01.15
V&V Edition	1
V&V Disposition and Status	OK
V&V Charge Time	10.03779

A.2 Comments