

# V&V Reference Report

## L2 ASCDS Version : 8.5.1.1

Observation 5835 - L2 Version 3  
Chandra X-Ray Center

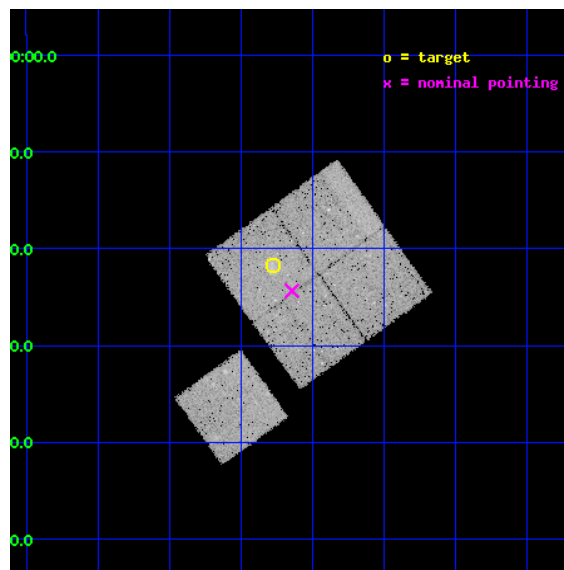
L2 Processing Date : Dec 23 2012

## Contents

<b>1</b>	<b>Front</b>	<b>2</b>
<b>2</b>	<b>OBI</b>	<b>3</b>
2.1	OBI . . . . .	3
2.1.1	Images . . . . .	3
2.1.2	Bias . . . . .	3
2.1.3	Parameters . . . . .	4
2.1.4	Events . . . . .	4
2.2	Compared Parameters . . . . .	5
2.3	Aspect . . . . .	6
2.4	Star Slots . . . . .	9
2.4.1	Slot 3 . . . . .	9
2.4.2	Slot 4 . . . . .	10
2.4.3	Slot 5 . . . . .	11
2.4.4	Slot 6 . . . . .	12
2.4.5	Slot 7 . . . . .	13
2.5	FID Slots . . . . .	14
2.5.1	Slot 0 . . . . .	14
2.5.2	Slot 1 . . . . .	15
2.5.3	Slot 2 . . . . .	16
<b>A</b>	<b>Summary</b>	<b>17</b>
A.1	Status . . . . .	17
A.2	Comments . . . . .	17

# 1 Front

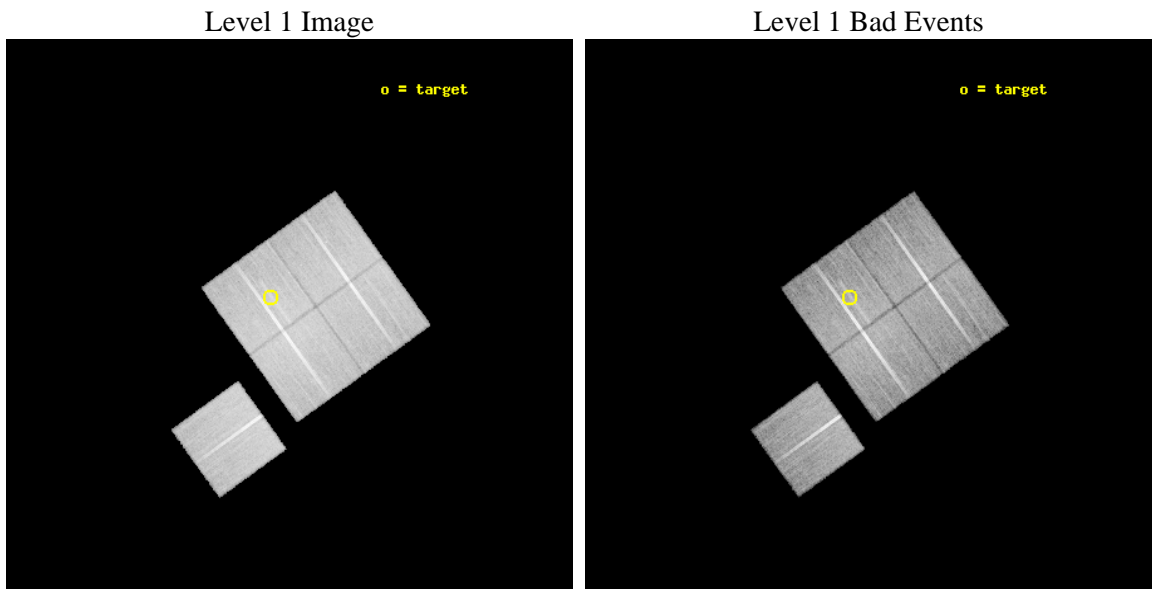
seq_num	800544	Sequence number
obs_id	5835	Observation id
title	Supplement to Chandra observations of high-redshift clusters of galaxies from the 400 Square Degree ROSAT PSPC survey	Proposal title
observer	Dr. Stephen Murray	Principal investigator
object	cl1354-0221	Source name
dtcycle	0	&#160
cycle	P	events from which exps? Prim/Second/Both
ra_targ	208.569583	Observer's specified target RA [deg]
dec_targ	-2.362778	Observer's specified target Dec [deg]
ra_nom	208.53622786699	Nominal RA [deg]
dec_nom	-2.4056808094528	Nominal Dec [deg]
roll_nom	234.26101336995	Nominal Roll [deg]
revision	3	Processing version of data
ontime	38173.359005928	Sum of GTIs [s]
livetime	37674.595967698	Livetime [s]
ontime0	38170.217926174	Sum of GTIs [s]
ontime1	38170.217946172	Sum of GTIs [s]
ontime2	38176.499926567	Sum of GTIs [s]
ontime3	38173.359005928	Sum of GTIs [s]
ontime6	38173.358936429	Sum of GTIs [s]
l2events	94655	Number of level 2 events



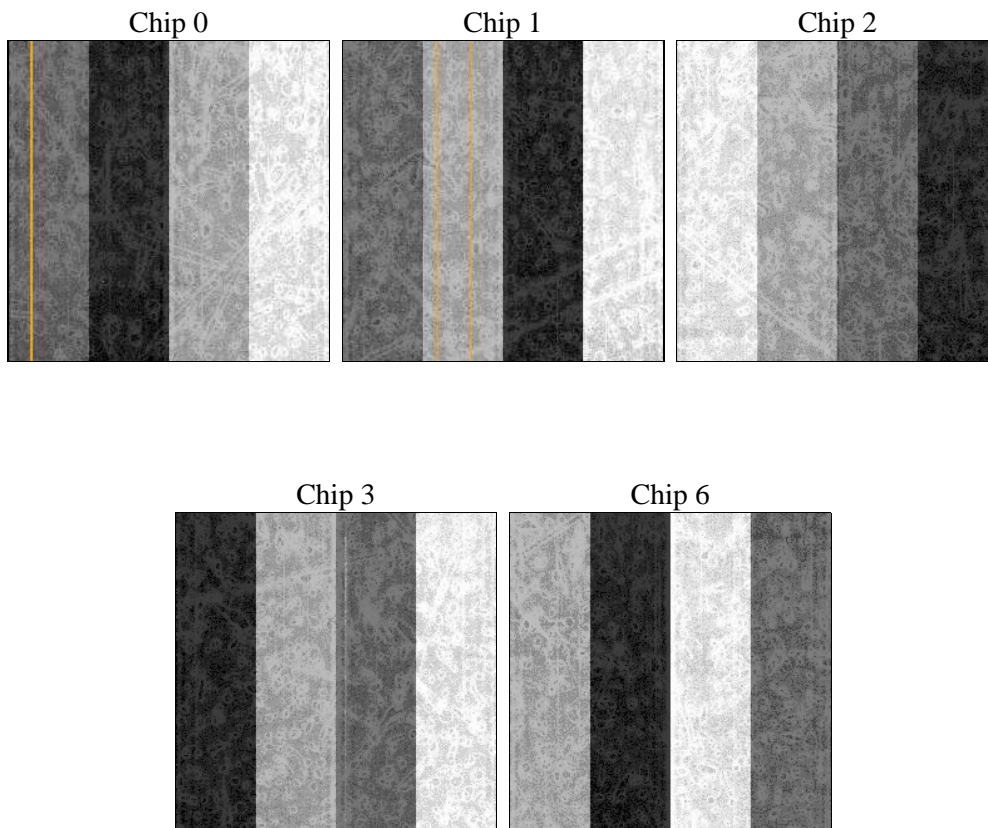
## 2 OBI

### 2.1 OBI

#### 2.1.1 Images



#### 2.1.2 Bias



### 2.1.3 Parameters

obi_num	1	Obi number	sched_exp_time	38000.000000	[s] Scheduled observation exposure time
ascdsver	8.5.1.1	Processing system revision	ontime	38173.359005928	Sum of GTIs [s]
caldsver	4.5.5	&#160	ontime0	38170.217926174	Sum of GTIs [s]
date	2012-12-23T16:56:17	Date and time of file creation	ontime1	38170.217946172	Sum of GTIs [s]
revision	3	Processing version of data	ontime2	38176.499926567	Sum of GTIs [s]
			ontime3	38173.359005928	Sum of GTIs [s]
			ontime6	38173.358936429	Sum of GTIs [s]
			l1events	1063271	Number of level 1 events

### 2.1.4 Events

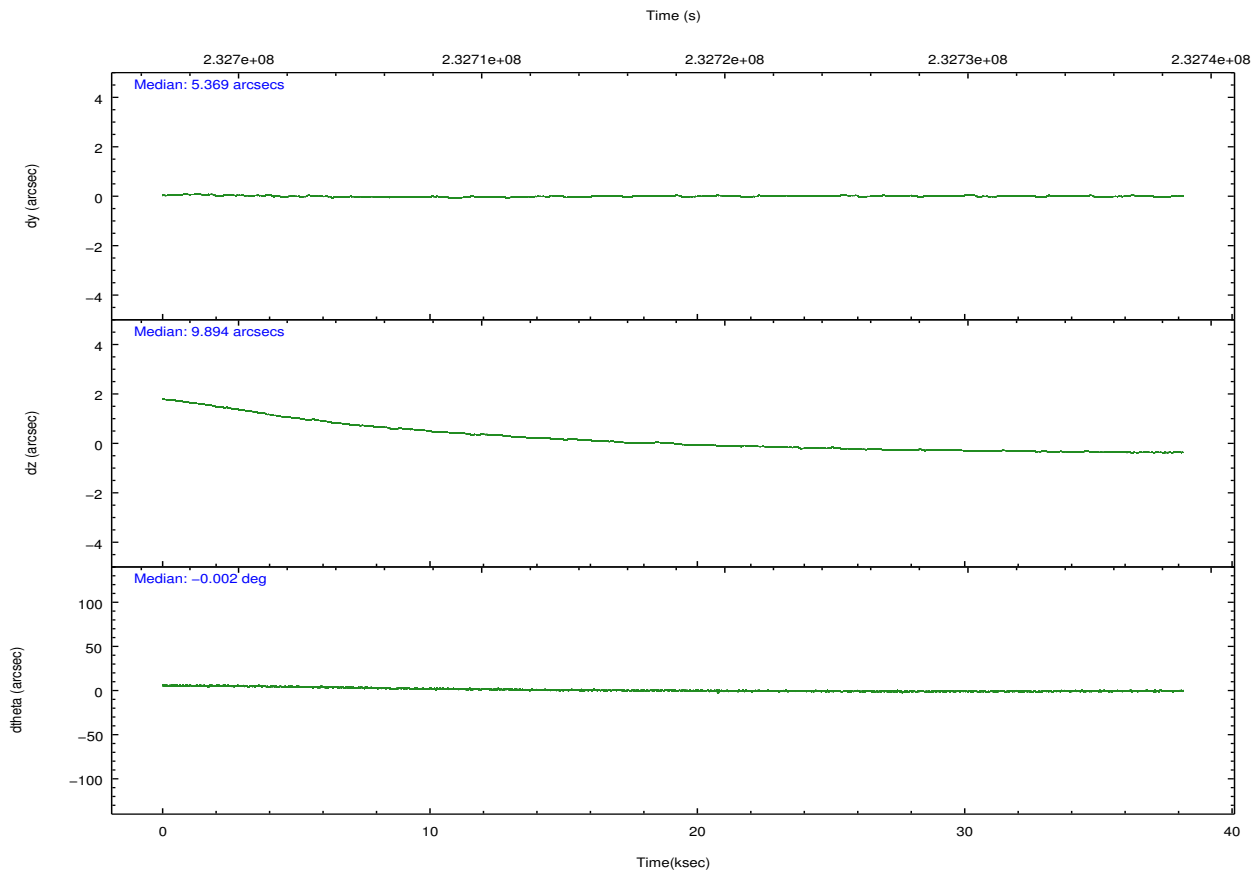
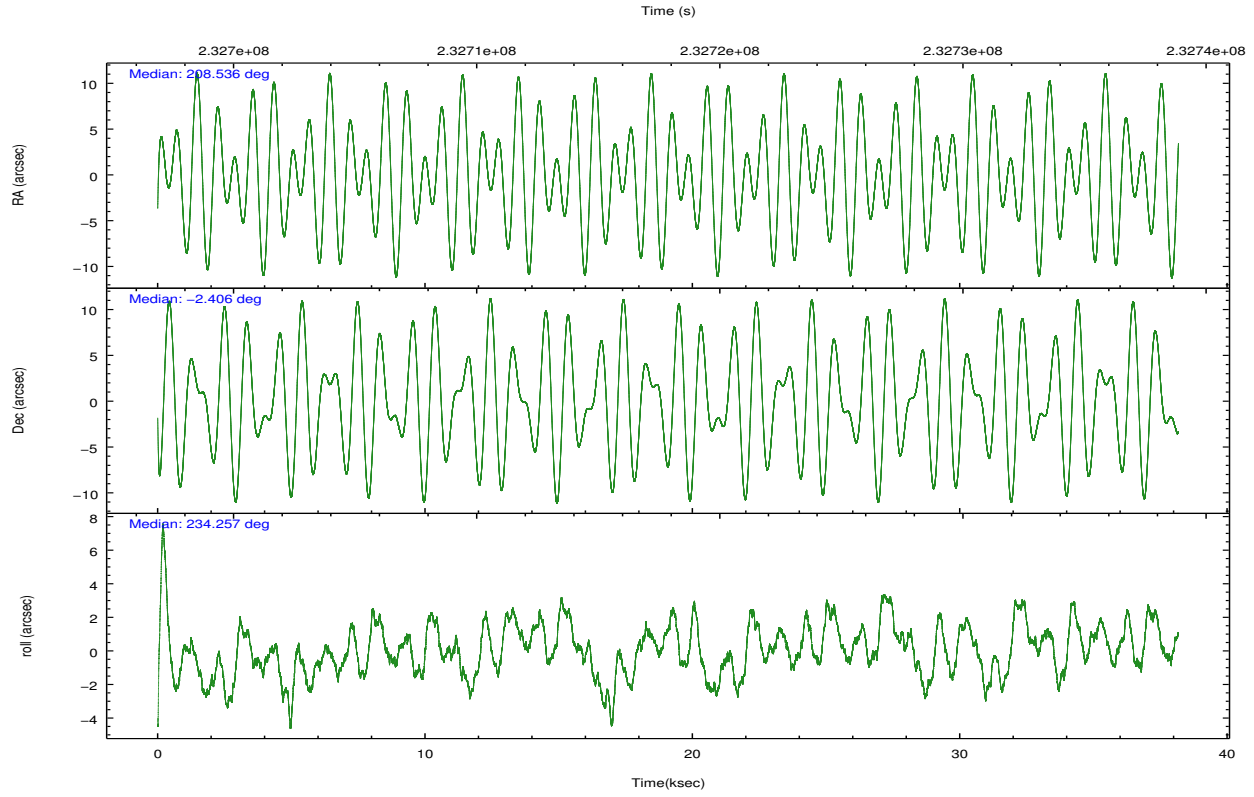
	ccd 0	ccd 1	ccd 2	ccd 3	ccd 6
level 1 events	200748	203120	223571	216595	219237
rejected events	178015	178107	200175	194917	195667
rejected %	88%	87%	89%	89%	89%

	ccd 0	ccd 1	ccd 2	ccd 3	ccd 6
grade 0 events	8237	9104	9124	8377	8902
	4%	4%	4%	3%	4%
grade 1 events	121	109	128	111	93
	0%	0%	0%	0%	0%
grade 2 events	5487	5497	5494	4528	5155
	2%	2%	2%	2%	2%
grade 3 events	2557	2807	2303	2363	2472
	1%	1%	1%	1%	1%
grade 4 events	2337	2686	2553	2384	2460
	1%	1%	1%	1%	1%
grade 5 events	7688	8180	7346	8663	8550
	3%	4%	3%	3%	3%
grade 6 events	4220	5011	4012	4111	4692
	2%	2%	1%	1%	2%
grade 7 events	170101	169726	192611	186058	186913
	84%	83%	86%	85%	85%

## 2.2 Compared Parameters

Parameter	Planned	Actual	Parameter	Planned	Actual
Instrument	ACIS	ACIS	Obspar format version number	7	7
Detector	ACIS-01236	ACIS-01236	Obspar file type	PREDICTED	ACTUAL
Grating	NONE	NONE	Obspar update status	NONE	UPDATED
Data mode	VFAINT	VFAINT	Number of optional ACIS chips dropped	0	0
Observation mode	POINTING	POINTING	On-chip summing requested	N	N
[deg] Pointing RA	208.538872	208.5362278669875	Subarray requested	NONE	NONE
[deg] Pointing Dec	-2.378400	-2.405680809452798	Alternating exposures requested	N	N
[deg] Pointing Roll	234.052440	234.261013369954	[s] Primary exposure time	0.000000	3.1
[mm] SIM focus pos	-0.782348	-0.7809083437167272			
[mm] SIM defocus	0	0.001439871863259334			
[mm] SIM translation stage pos	-225.840463	-225.8433433320239			
[mm] SIM translation stage offset	-7.752	-7.749109670905796			
[s] Observation start time (MET)	232698967.184000	232697757.42057			
Observation start date	2005-05-17T06:35:03	2005-05-17T06:15:57			
[s] Observation end time (MET)	232736967.184000	232737934.8599			
Observation end date	2005-05-17T17:08:23	2005-05-17T17:25:34			
Read mode	TIMED	TIMED			

## 2.3 Aspect

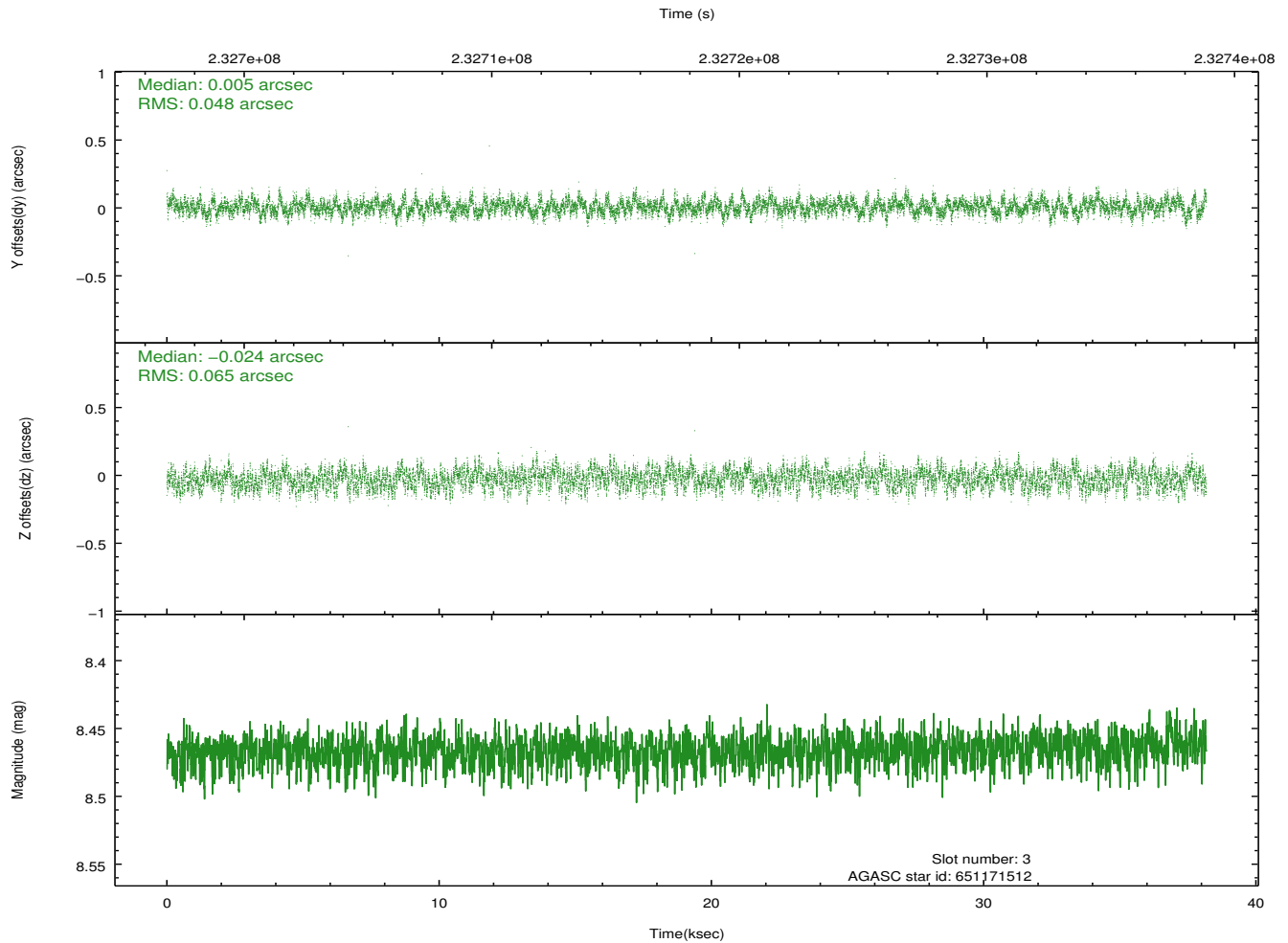
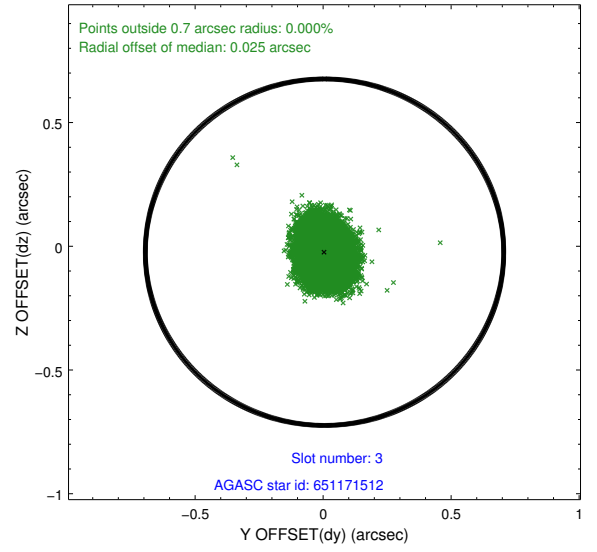
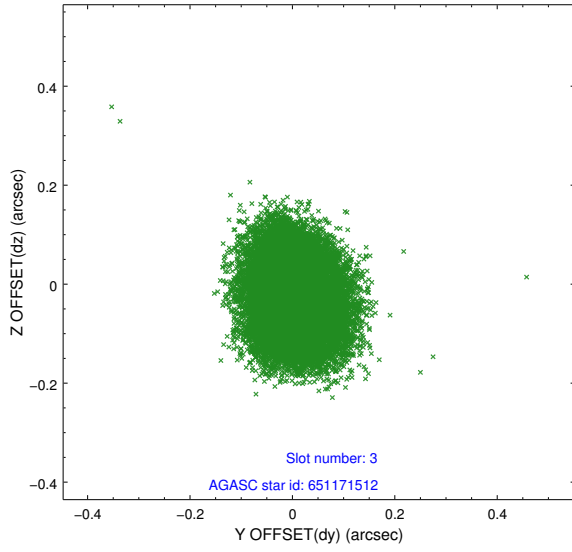


### Slot Statistics

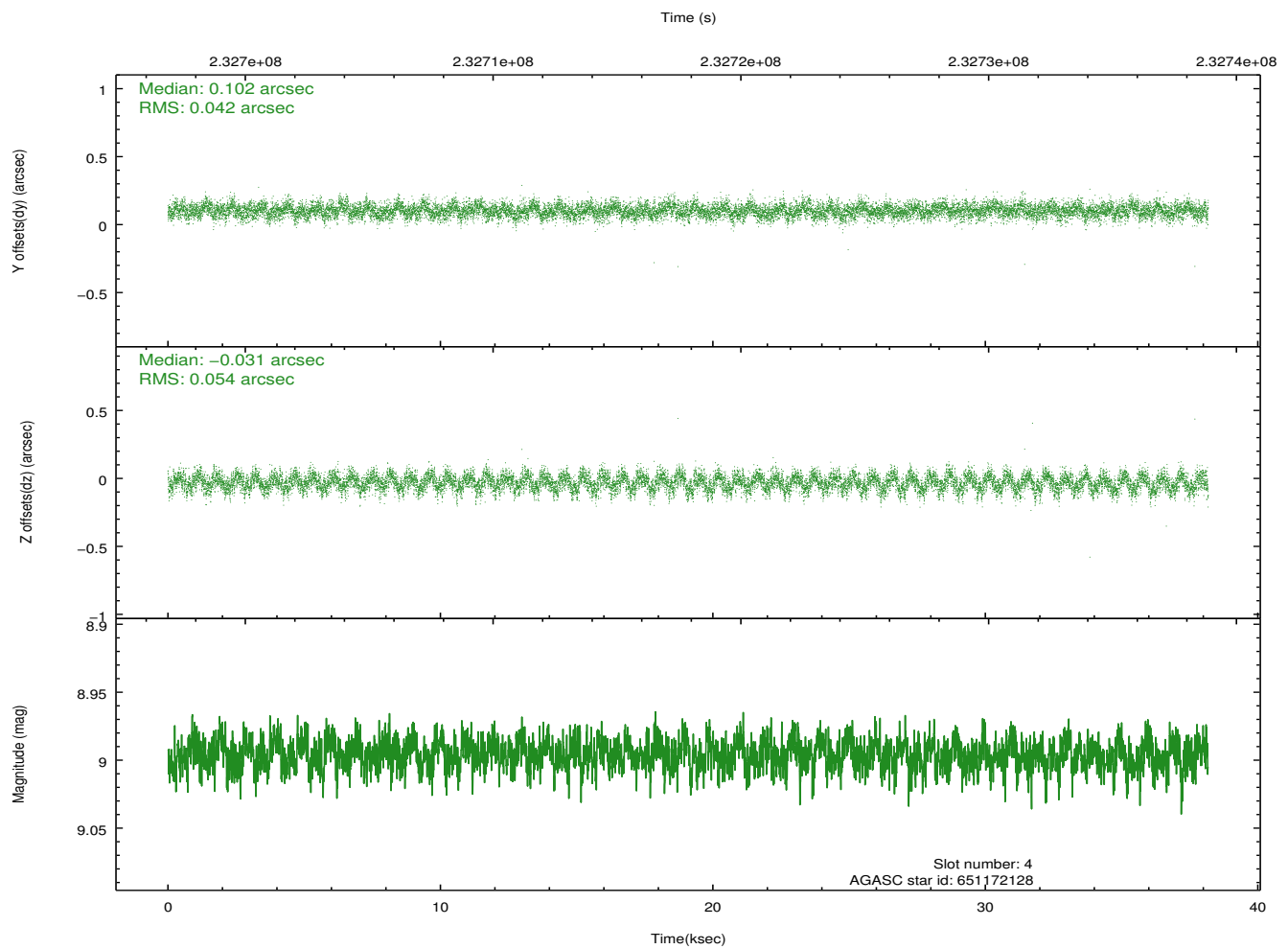
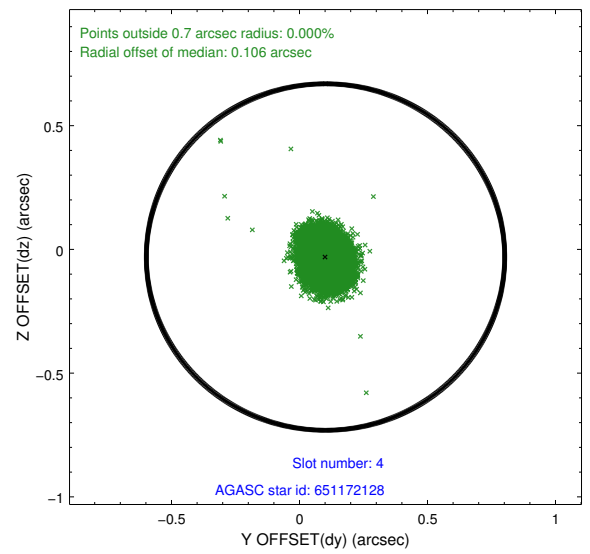
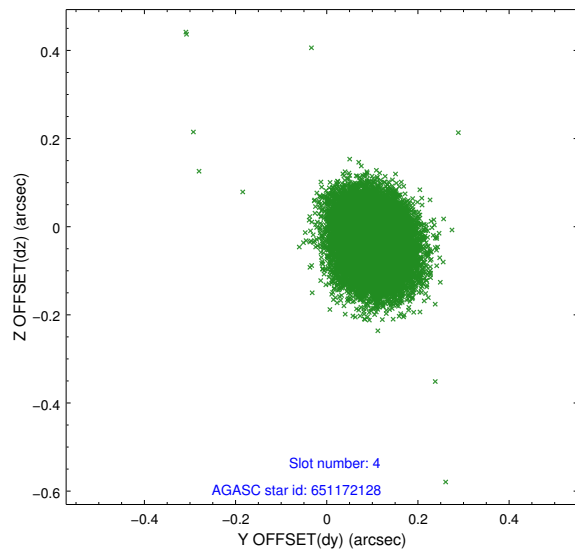
slot	status	id	mag	n_pts	med_dy	med_dz	dr1	dr2	ra	dec	mean_y	mean_z
0	FID	ACIS-I-1	7.23	9313	0.094	-0.083	0.016	0.059	0.000000	0.000000	934.31	-992.75
1	FID	ACIS-I-5	7.22	9312	-0.250	0.078	0.013	0.043	0.000000	0.000000	-1814.13	904.89
2	FID	ACIS-I-6	7.25	9313	0.062	0.076	0.012	0.025	0.000000	0.000000	399.79	1549.42
3	GUIDE	651171512	8.47	18621	0.005	-0.024	0.086	0.136	208.530490	-1.965561	-1184.90	-896.90
4	GUIDE	651172128	9.00	18615	0.102	-0.031	0.072	0.117	208.716005	-2.380357	-367.99	520.00
5	GUIDE	651559472	8.54	18599	0.079	0.129	0.059	0.094	208.584808	-3.005162	1730.36	1458.82
6	GUIDE	651172352	9.37	18617	-0.038	-0.059	0.114	0.188	209.417599	-2.298646	-2087.31	2391.12
7	GUIDE	651167608	9.50	18611	-0.149	-0.008	0.098	0.159	208.411734	-1.473172	-2369.54	-2283.36

## 2.4 Star Slots

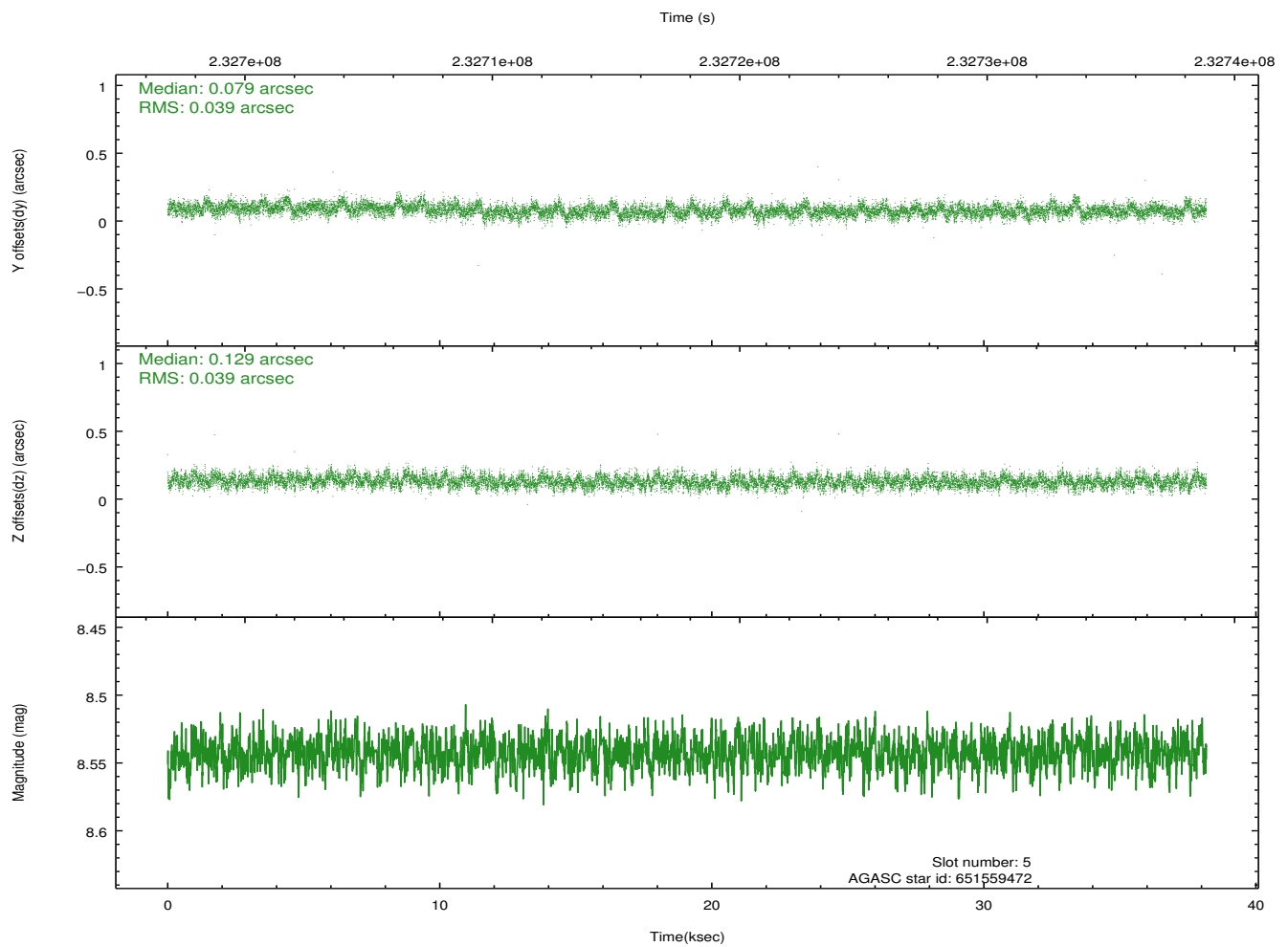
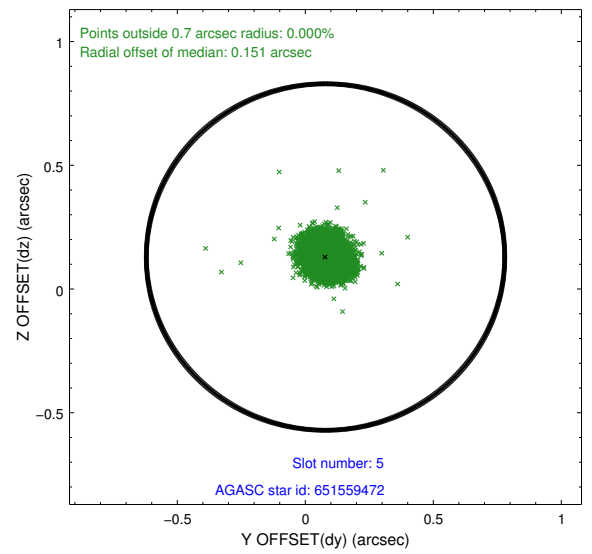
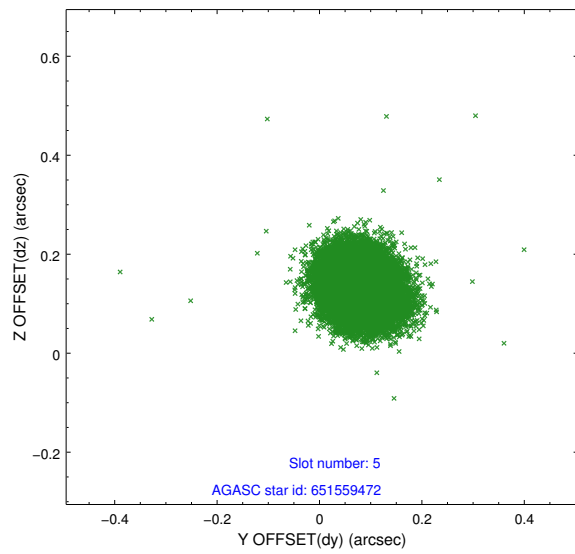
### 2.4.1 Slot 3



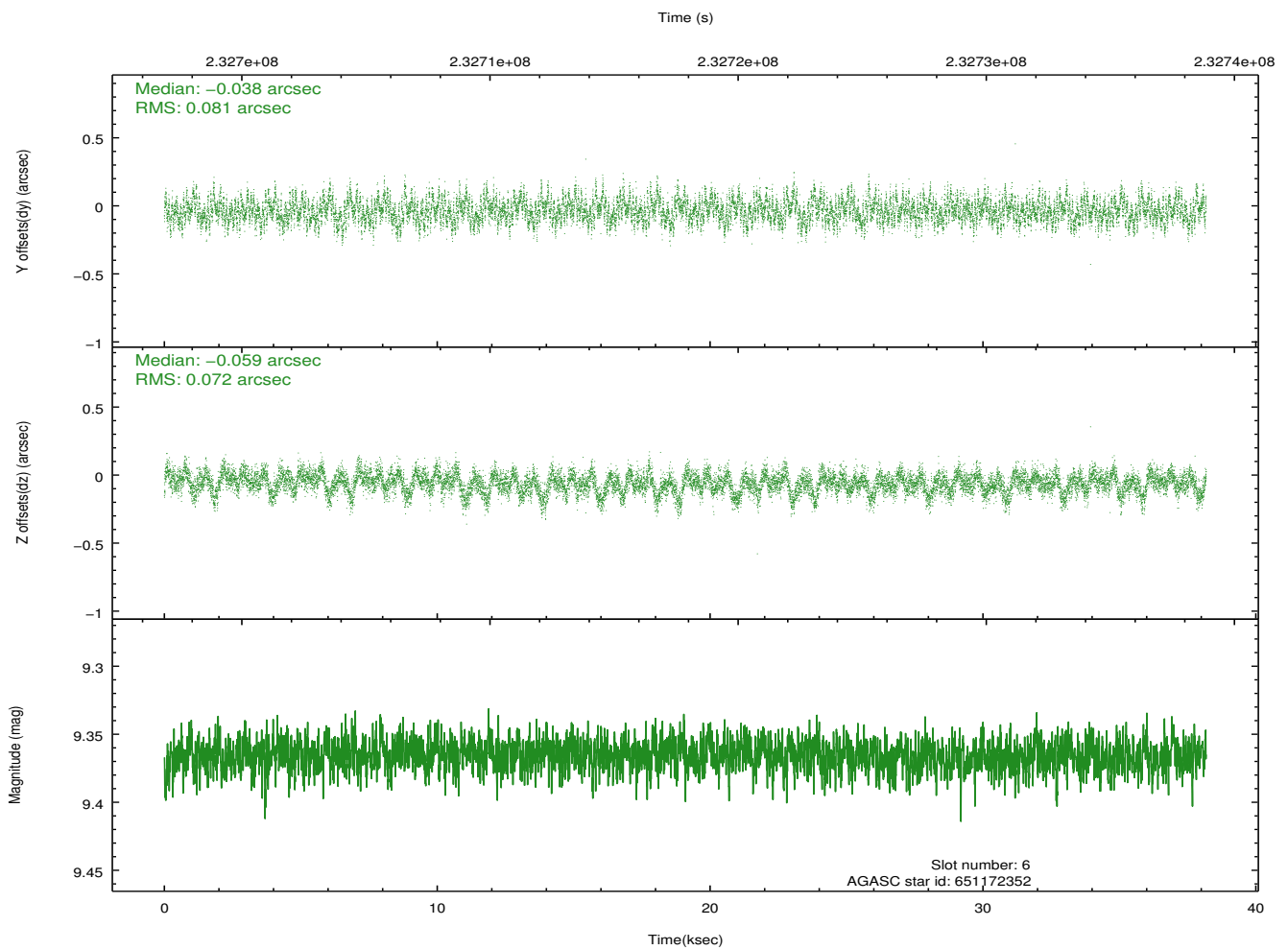
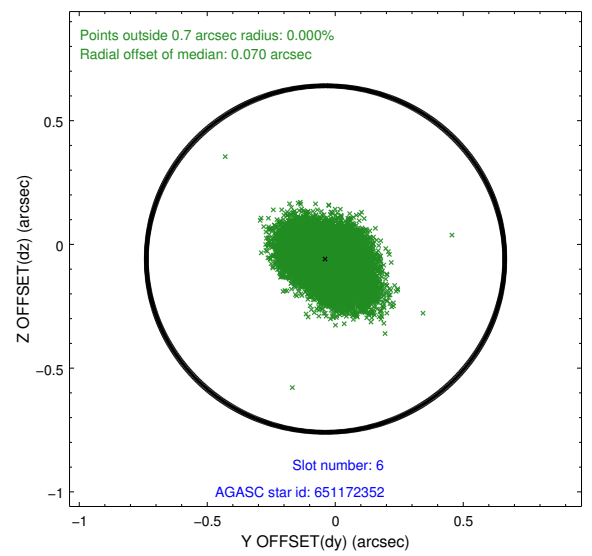
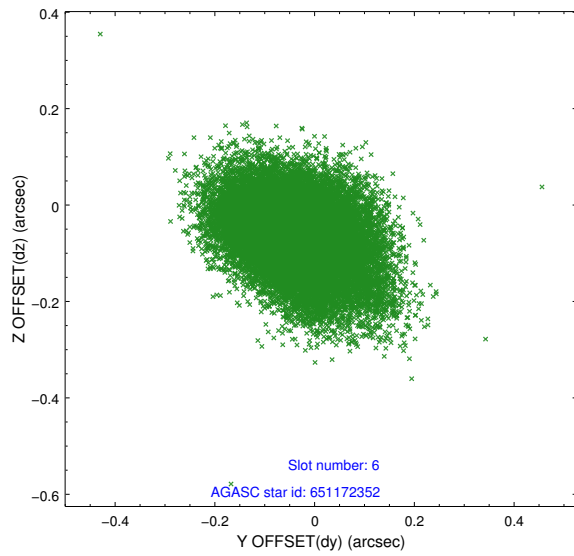
## 2.4.2 Slot 4



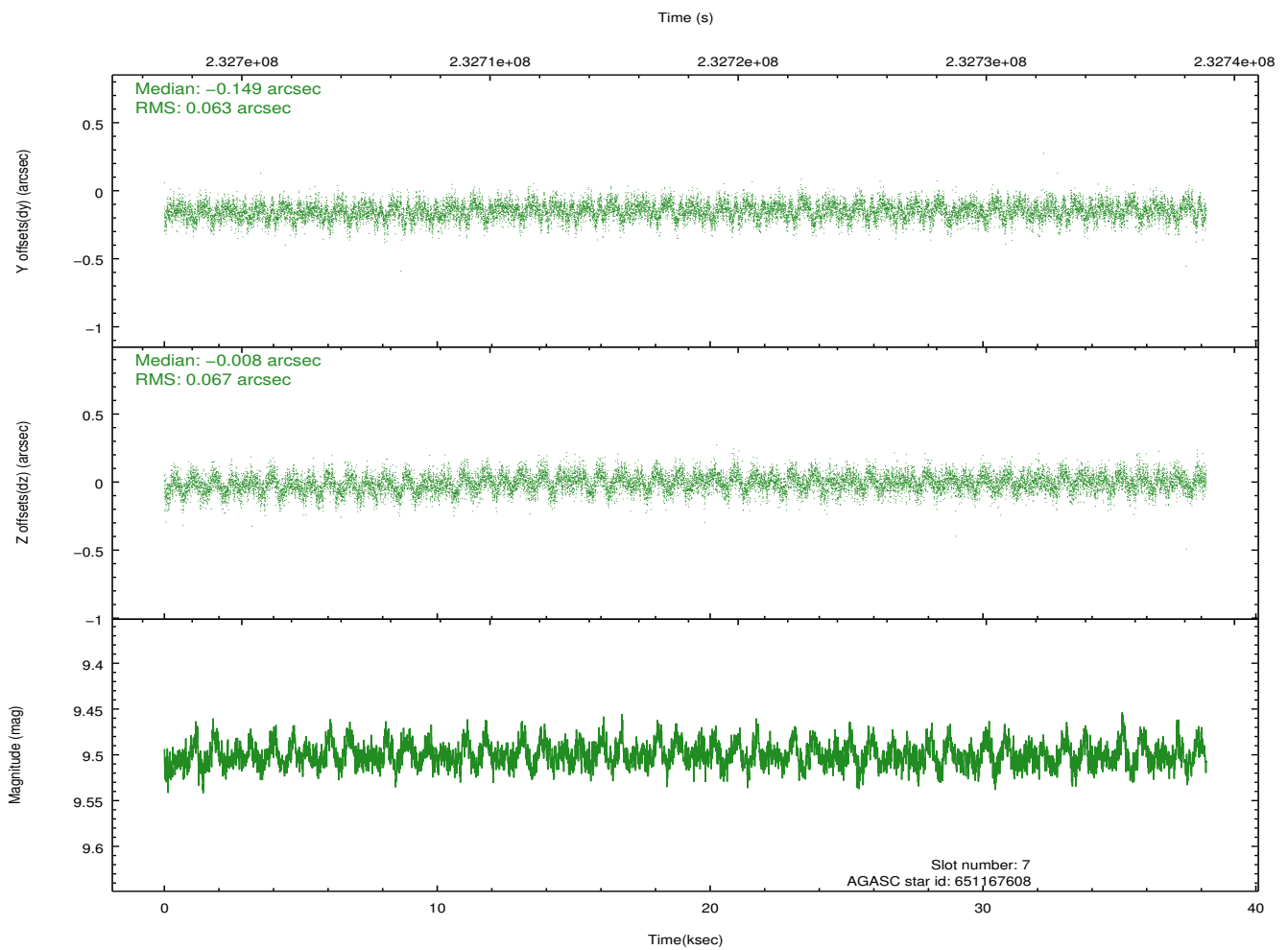
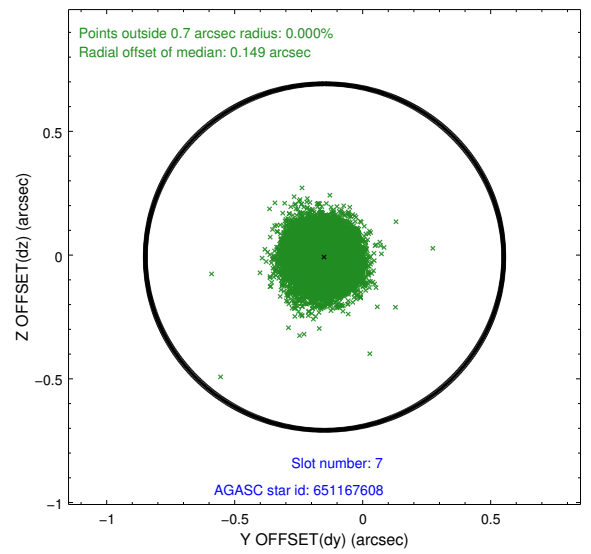
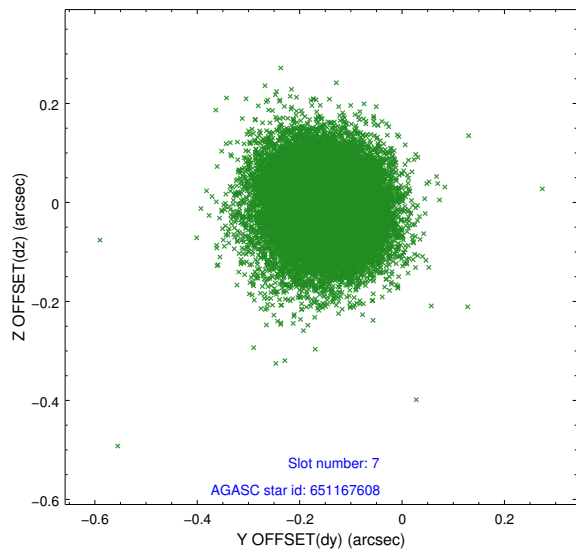
### 2.4.3 Slot 5



## 2.4.4 Slot 6

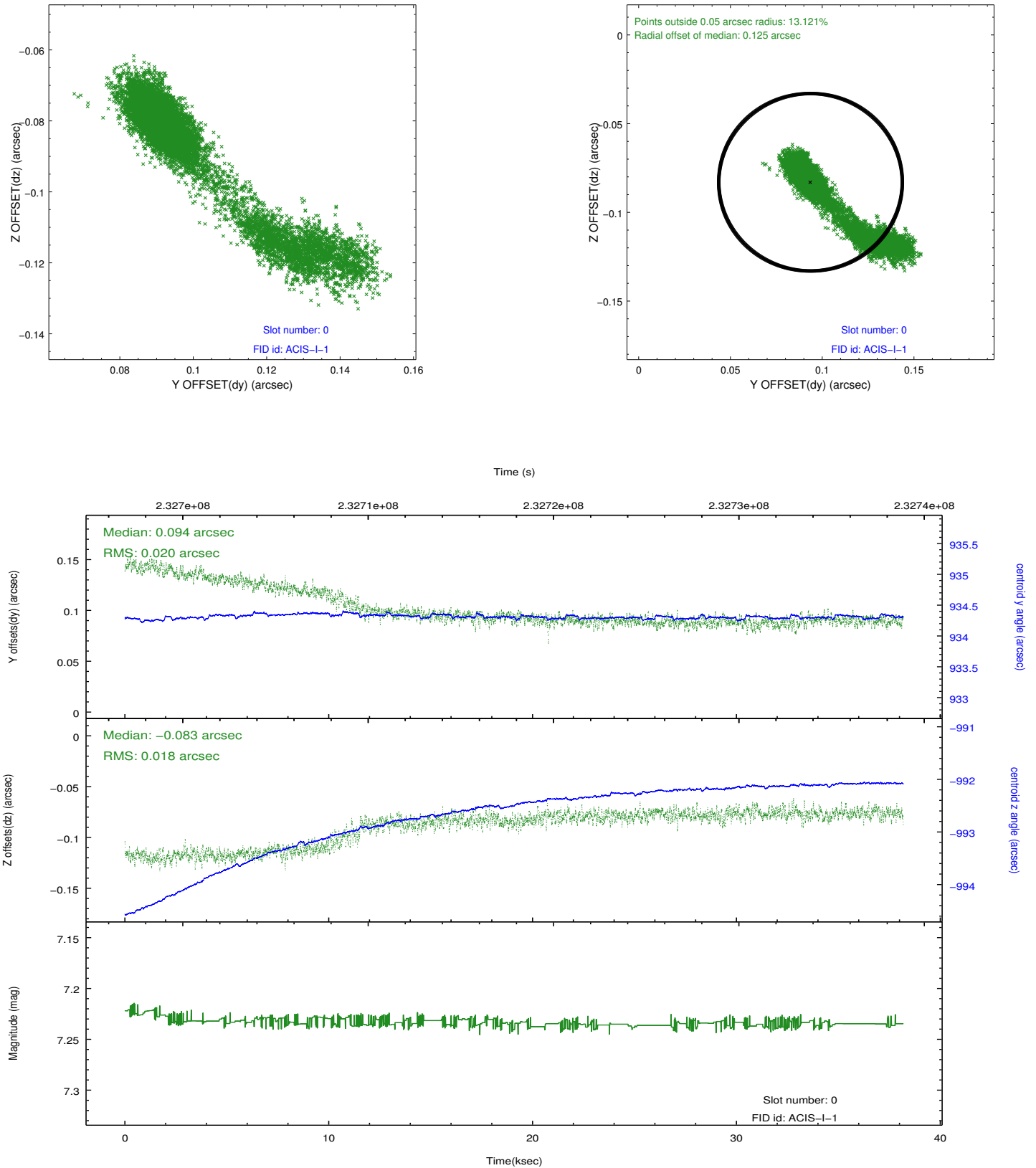


## 2.4.5 Slot 7

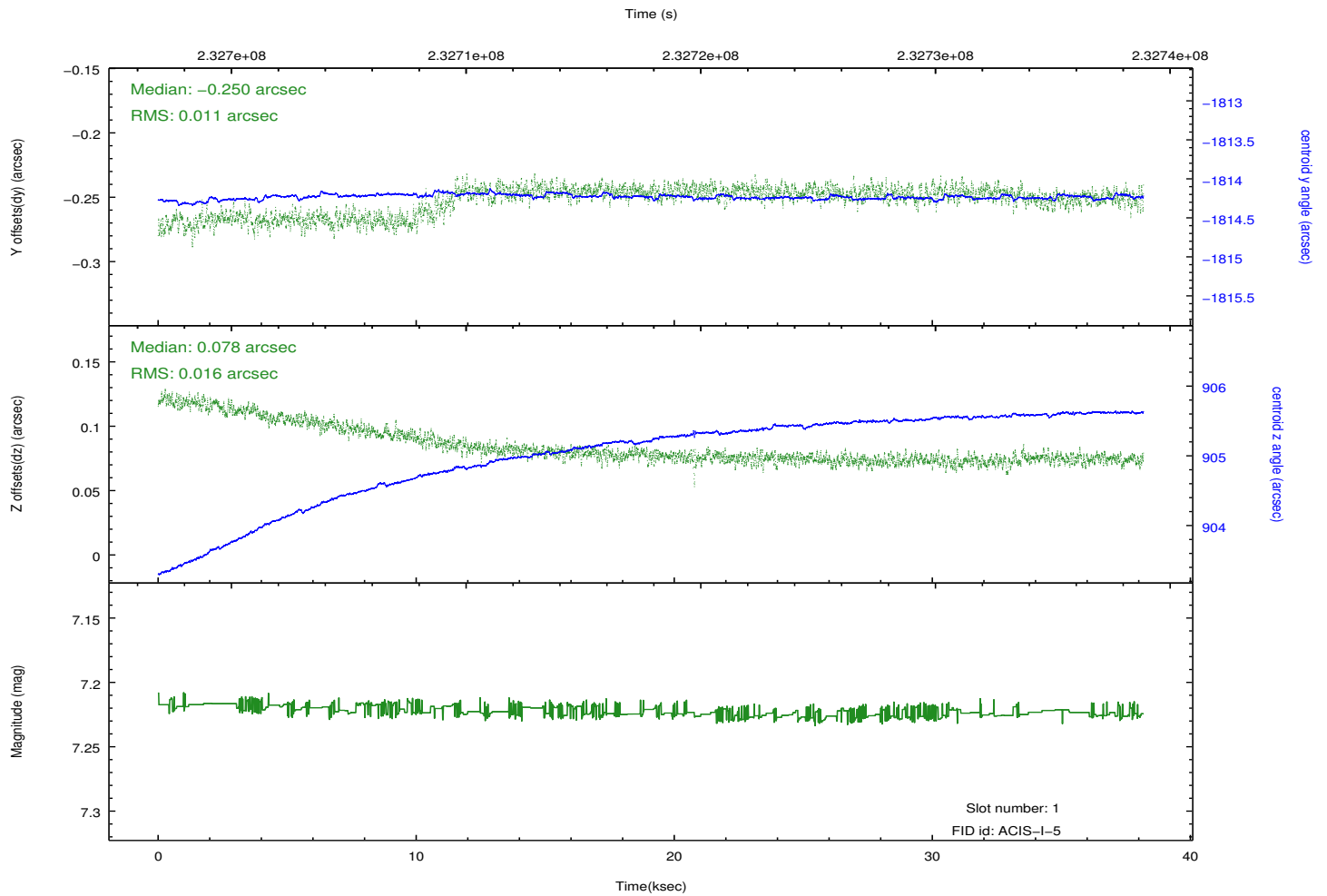
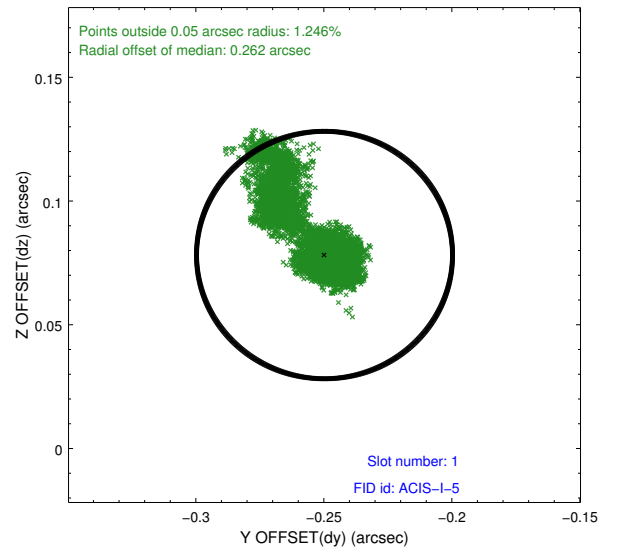
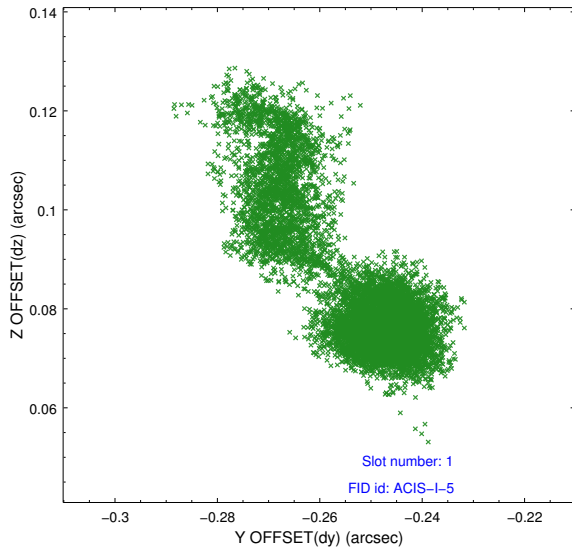


## 2.5 FID Slots

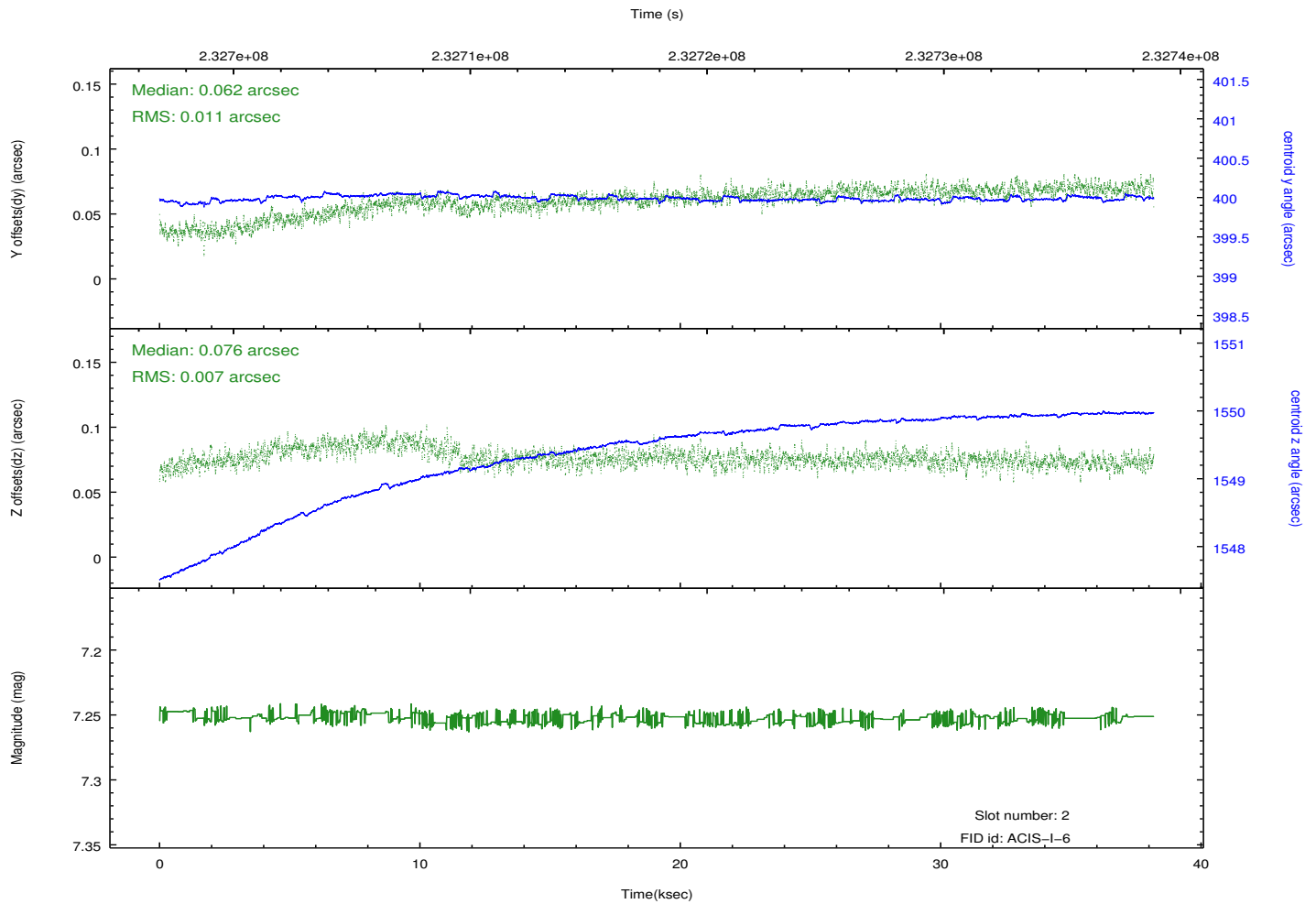
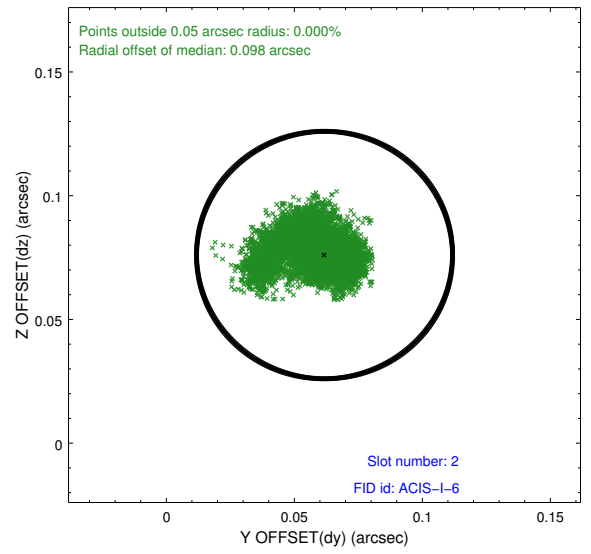
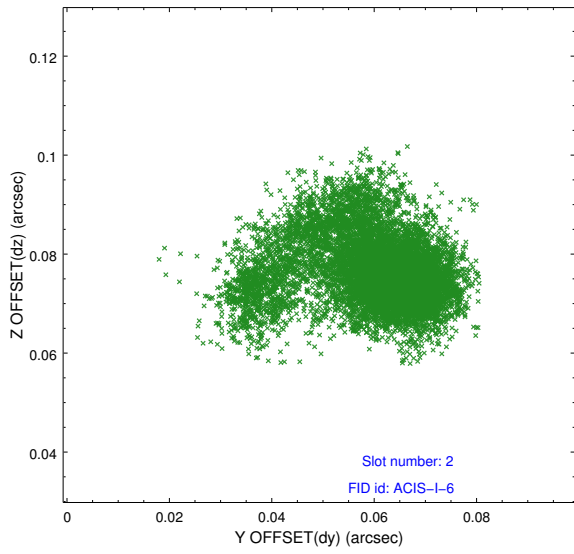
### 2.5.1 Slot 0



## 2.5.2 Slot 1



### 2.5.3 Slot 2



# A Summary

## A.1 Status

V&V Scientist	Beth Sundheim
V&V Date (YYYY-MM-DD)	2013.01.09
V&V Edition	1
V&V Disposition and Status	OK
V&V Charge Time	38.17335

## A.2 Comments