

V&V Reference Report

L2 ASCDS Version : 8.5.1

Observation 5885 - L2 Version 3
Chandra X-Ray Center

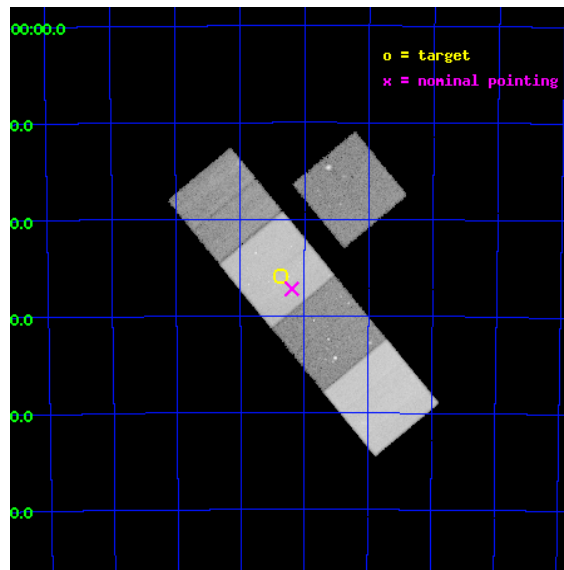
L2 Processing Date : Dec 15 2012

Contents

1	Front	2
2	OBI	3
2.1	OBI	3
2.1.1	Images	3
2.1.2	Bias	3
2.1.3	Parameters	4
2.1.4	Events	4
2.2	Compared Parameters	5
2.3	Aspect	6
2.4	Star Slots	9
2.4.1	Slot 3	9
2.4.2	Slot 4	10
2.4.3	Slot 5	11
2.4.4	Slot 6	12
2.4.5	Slot 7	13
2.5	FID Slots	14
2.5.1	Slot 0	14
2.5.2	Slot 1	15
2.5.3	Slot 2	16
A	Summary	17
A.1	Status	17
A.2	Comments	17

1 Front

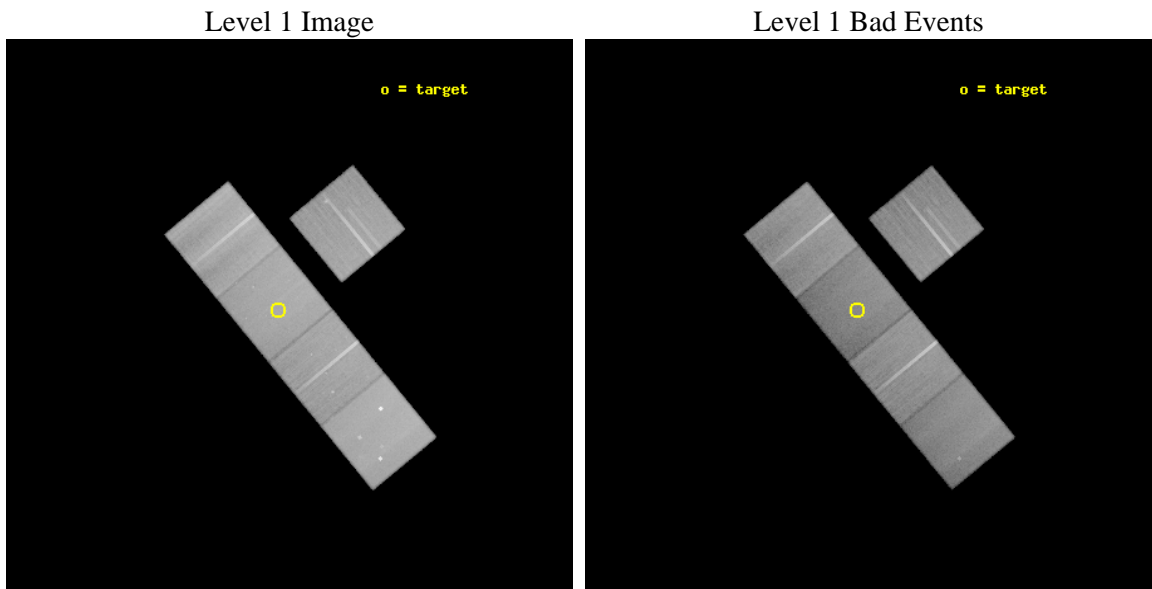
seq_num	900385	Sequence number
obs_id	5885	Observation id
title	X-ray Emission from Optically-Selected, High-Redshift Galaxy Clusters from the RCS Survey	Proposal title
observer	Professor Gordon Garmire	Principal investigator
object	RCS2112.3-6326	Source name
dtcycle	0	
cycle	P	events from which exps? Prim/Second/Both
ra_targ	318.093333	Observer's specified target RA [deg]
dec_targ	-63.432028	Observer's specified target Dec [deg]
ra_nom	318.04904125865	Nominal RA [deg]
dec_nom	-63.453318609252	Nominal Dec [deg]
roll_nom	230.4954398221	Nominal Roll [deg]
revision	3	Processing version of data
ontime	71653.3998622	Sum of GTIs [s]
livetime	70717.195442535	Livetime [s]
ontime3	71647.117941707	Sum of GTIs [s]
ontime5	71653.3998622	Sum of GTIs [s]
ontime6	71643.976941586	Sum of GTIs [s]
ontime7	71653.3998622	Sum of GTIs [s]
ontime8	71643.97695154	Sum of GTIs [s]
l2events	639246	Number of level 2 events



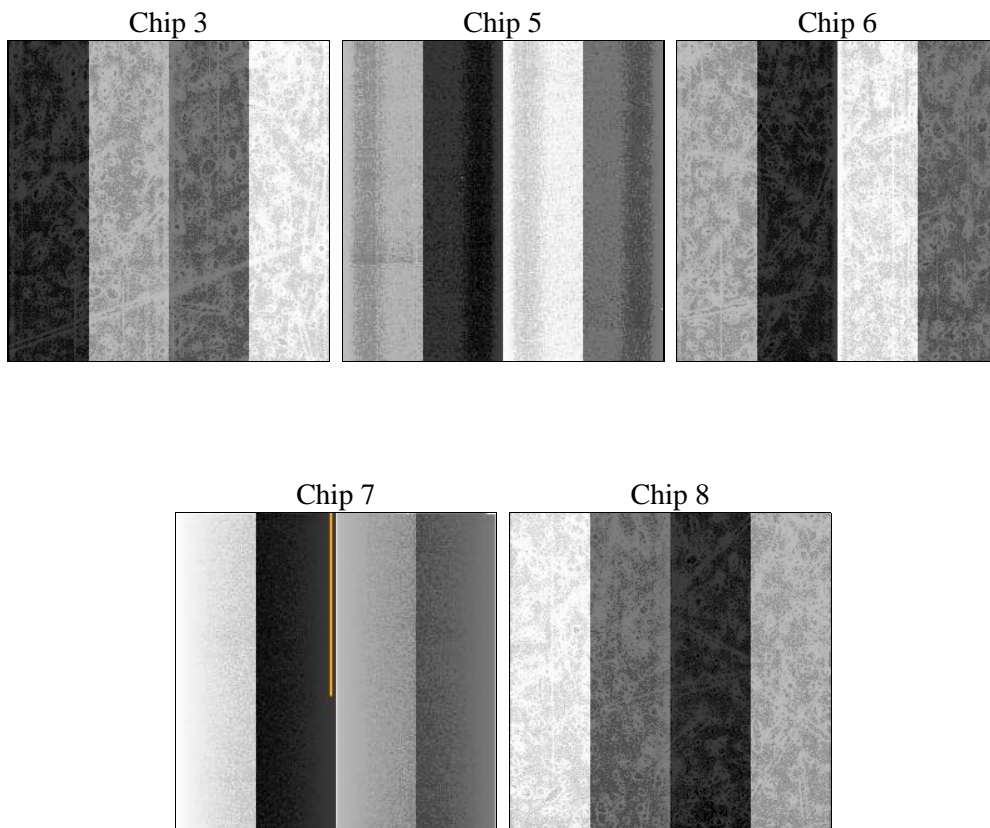
2 OBI

2.1 OBI

2.1.1 Images



2.1.2 Bias



2.1.3 Parameters

obi_num	0	Obi number	sched_exp_time	71500.000000	[s] Scheduled observation exposure time
ascdsver	8.5.1	Processing system revision	ontime	71653.3998622	Sum of GTIs [s]
caldbver	4.5.5	 	ontime3	71647.117941707	Sum of GTIs [s]
date	2012-12-15T09:53:33	Date and time of file creation	ontime5	71653.3998622	Sum of GTIs [s]
revision	3	Processing version of data	ontime6	71643.976941586	Sum of GTIs [s]
			ontime7	71653.3998622	Sum of GTIs [s]
			ontime8	71643.97695154	Sum of GTIs [s]
			l1events	2618175	Number of level 1 events

2.1.4 Events

	ccd 3	ccd 5	ccd 6	ccd 7	ccd 8
level 1 events	449704	620386	467652	504979	575454
rejected events	406954	308350	418140	275904	442820
rejected %	90%	49%	89%	54%	76%

	ccd 3	ccd 5	ccd 6	ccd 7	ccd 8
grade 0 events	15858	41902	18901	22024	40331
	3%	6%	4%	4%	7%
grade 1 events	233	1338	232	459	409
	0%	0%	0%	0%	0%
grade 2 events	9056	86940	10251	46293	29405
	2%	14%	2%	9%	5%
grade 3 events	4845	14524	5343	21655	14400
	1%	2%	1%	4%	2%
grade 4 events	4794	14035	5283	22063	13452
	1%	2%	1%	4%	2%
grade 5 events	17426	50265	18197	53325	25457
	3%	8%	3%	10%	4%
grade 6 events	8449	156576	10048	118374	35943
	1%	25%	2%	23%	6%
grade 7 events	389043	254806	399397	220786	416057
	86%	41%	85%	43%	72%

2.2 Compared Parameters

Parameter	Planned	Actual	Parameter	Planned	Actual
Instrument	ACIS	ACIS	Obspar format version number	7	7
Detector	ACIS-35678	ACIS-35678	Obspar file type	PREDICTED	ACTUAL
Grating	NONE	NONE	Obspar update status	NONE	UPDATED
Data mode	VFAINT	VFAINT	Number of optional ACIS chips dropped	0	0
Observation mode	POINTING	POINTING	On-chip summing requested	N	N
[deg] Pointing RA	318.058283	318.0490412586518	Subarray requested	NONE	NONE
[deg] Pointing Dec	-63.426395	-63.45331860925214	Alternating exposures requested	N	N
[deg] Pointing Roll	230.347072	230.4954398220982	[s] Primary exposure time	0.000000	3.1
[mm] SIM focus pos	-0.684267	-0.6828225247311905			
[mm] SIM defocus	0	0.001444936568705701			
[mm] SIM translation stage pos	-190.132523	-190.1400660498719			
[mm] SIM translation stage offset	0	0.00754346686406393			
[s] Observation start time (MET)	220798183.184000	220796987.20624			
Observation start date	2004-12-30T12:48:39	2004-12-30T12:29:47			
[s] Observation end time (MET)	220869683.184000	220870395.65955			
Observation end date	2004-12-31T08:40:19	2004-12-31T08:53:15			
Read mode	TIMED	TIMED			

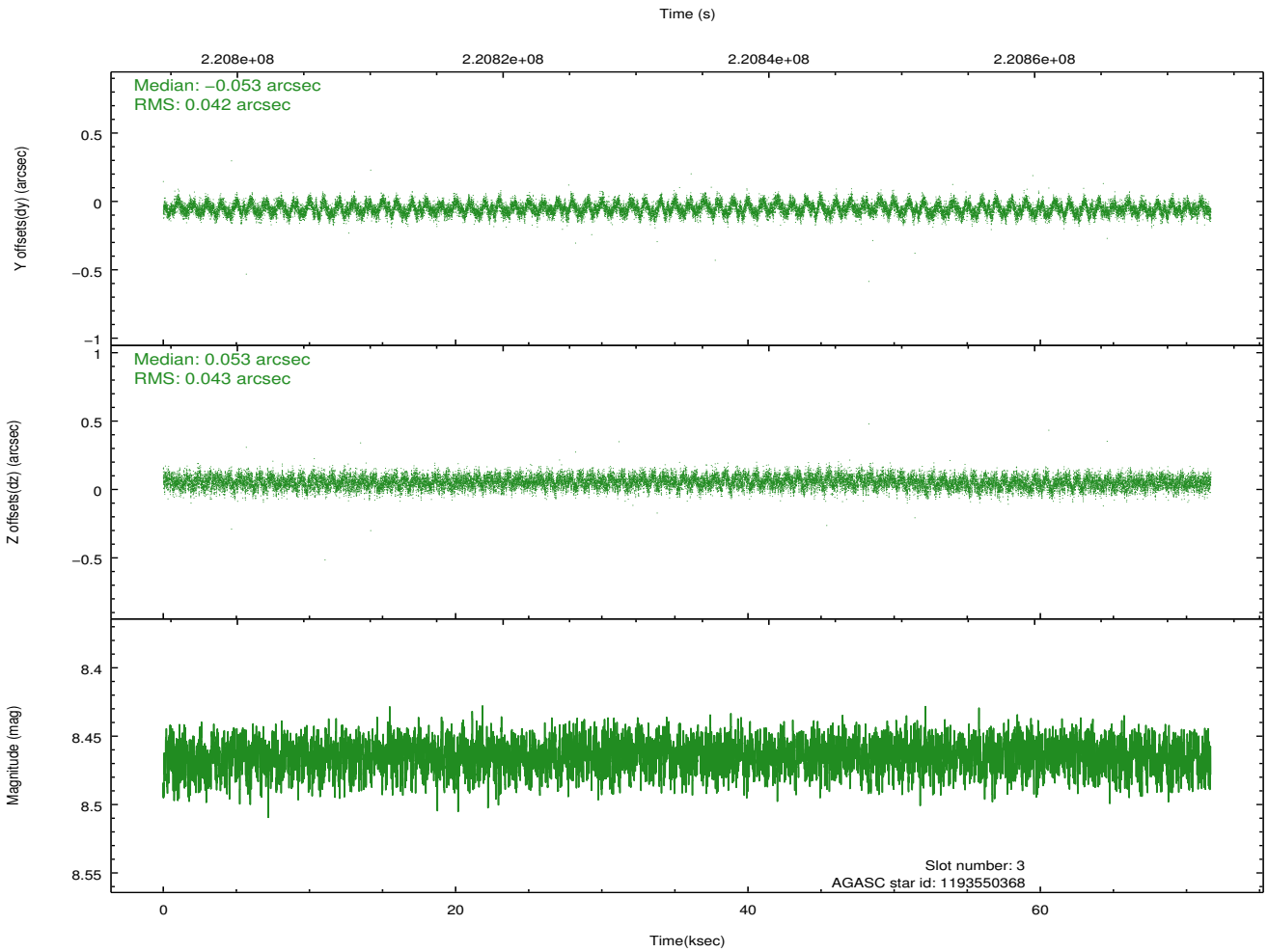
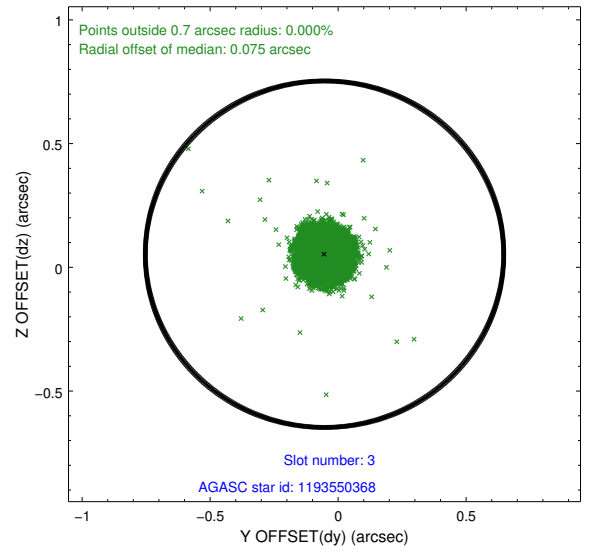
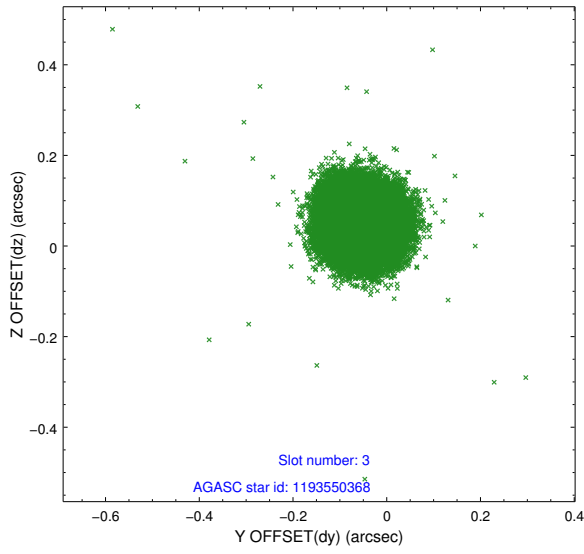
2.3 Aspect

Slot Statistics

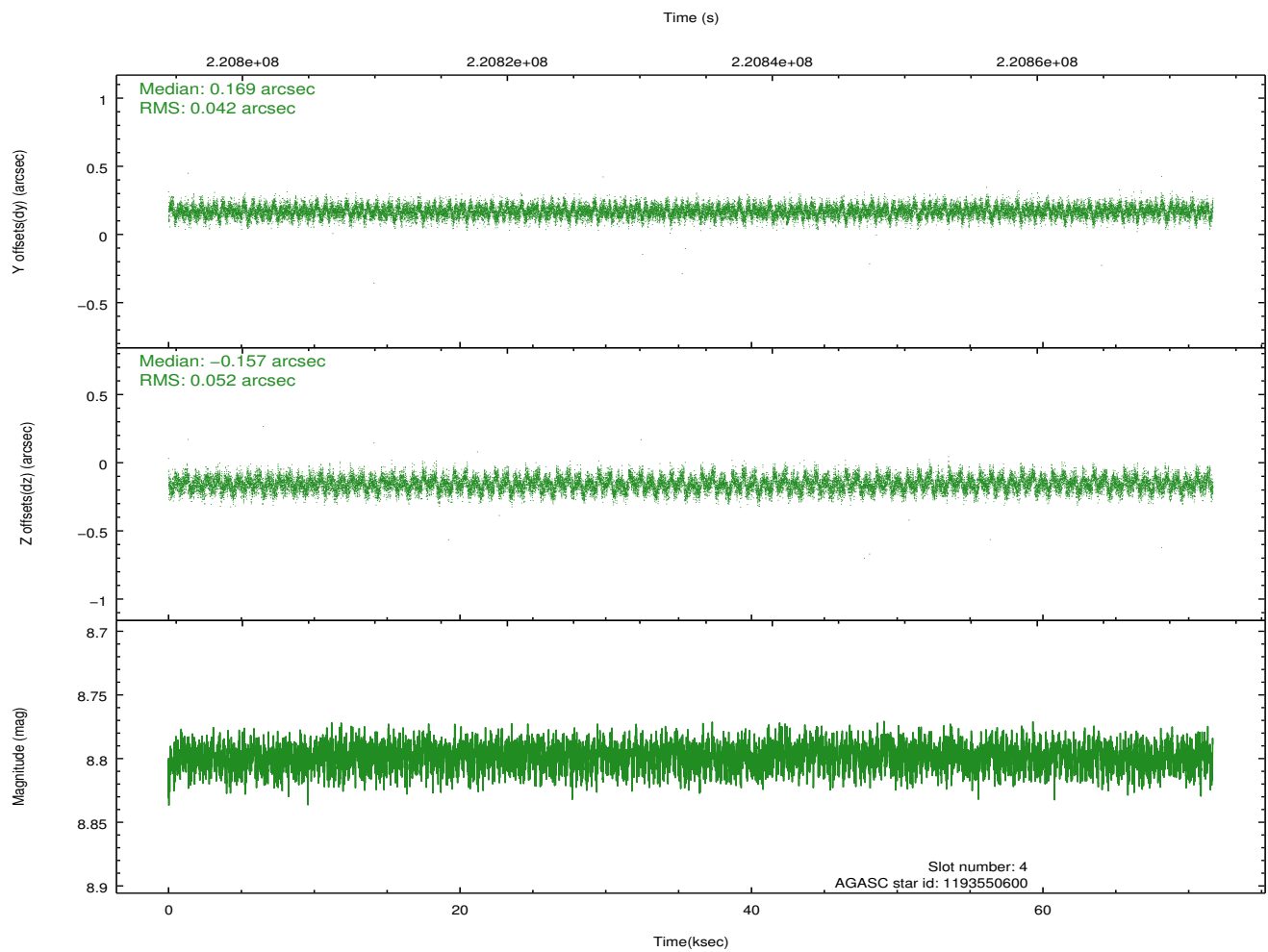
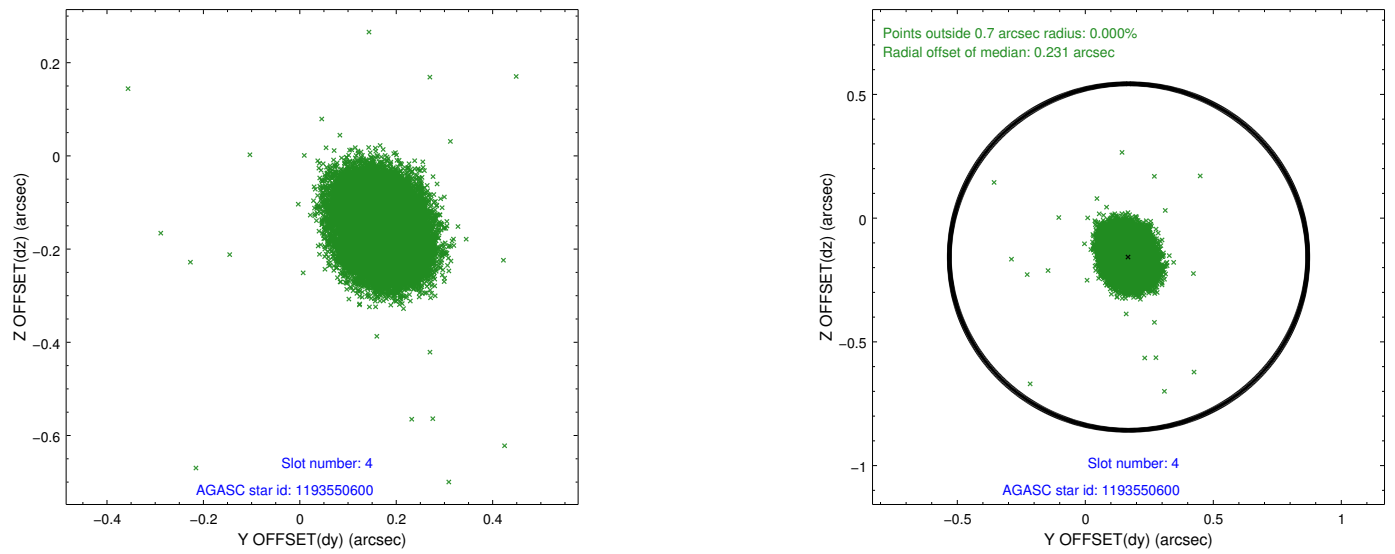
slot	status	id	mag	n_pts	med_dy	med_dz	dr1	dr2	ra	dec	mean_y	mean_z
0	FID	ACIS-S-2	7.10	17477	-0.021	-0.030	0.014	0.023	0.000000	0.000000	-759.99	-1733.41
1	FID	ACIS-S-4	7.20	17479	0.069	0.018	0.015	0.024	0.000000	0.000000	2153.40	175.18
2	FID	ACIS-S-5	7.23	17476	-0.072	0.020	0.017	0.028	0.000000	0.000000	-1812.96	168.79
3	GUIDE	1193550368	8.46	34949	-0.053	0.053	0.064	0.101	317.223863	-63.103269	-21.22	-1782.57
4	GUIDE	1193550600	8.80	34938	0.169	-0.157	0.071	0.115	317.766295	-63.684901	1015.24	235.94
5	GUIDE	1193550640	9.33	34930	0.001	0.029	0.077	0.126	317.782084	-63.005493	-877.39	-1313.66
6	GUIDE	1194067992	8.16	34949	-0.129	0.168	0.060	0.096	318.220361	-64.120775	1762.44	1791.91
7	GUIDE	1194072440	7.28	34954	0.010	-0.094	0.058	0.094	317.530972	-64.025456	2194.22	738.71

2.4 Star Slots

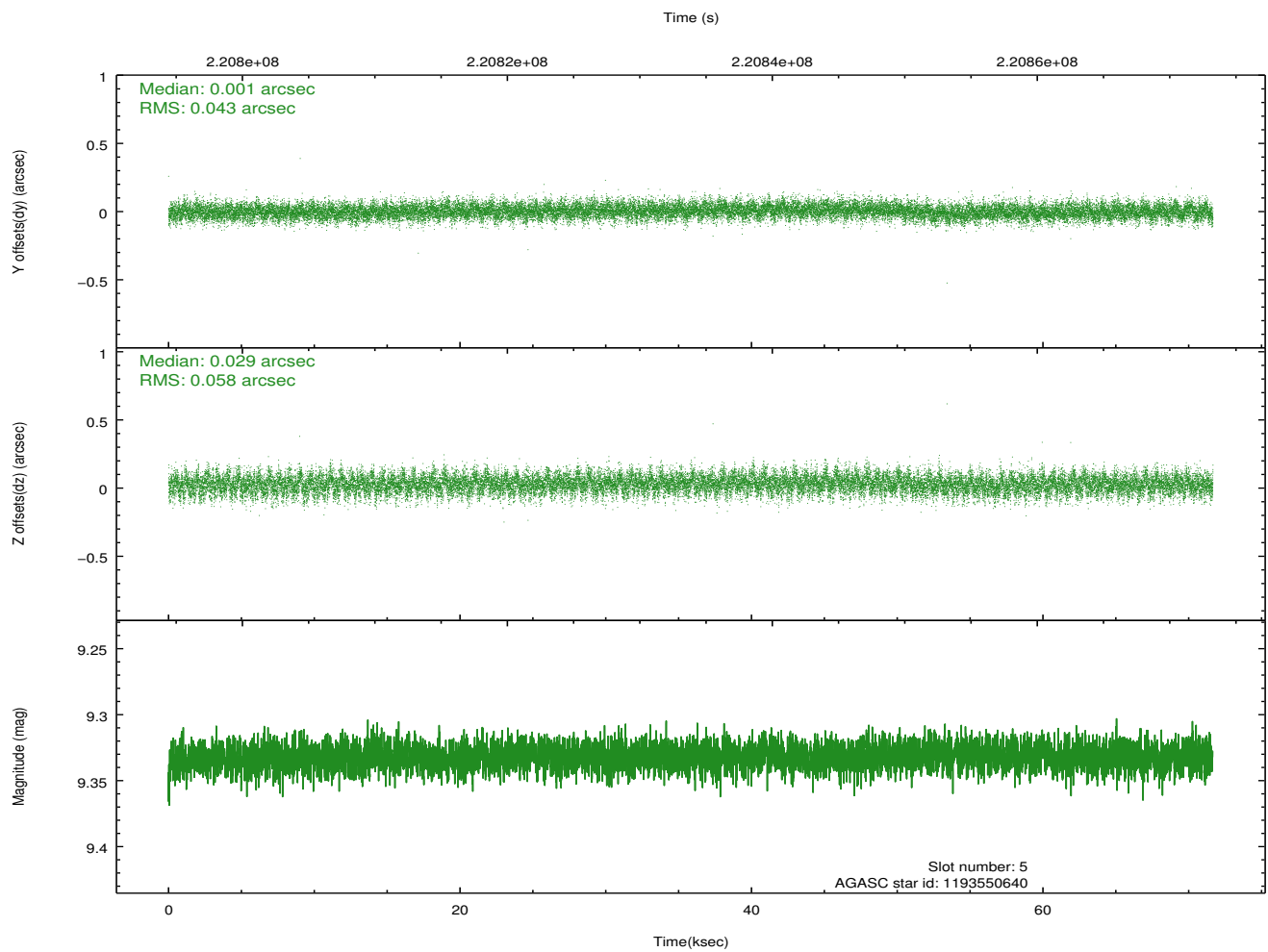
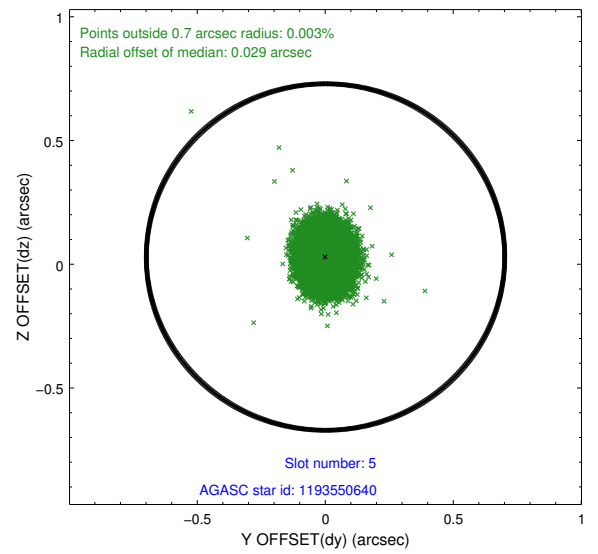
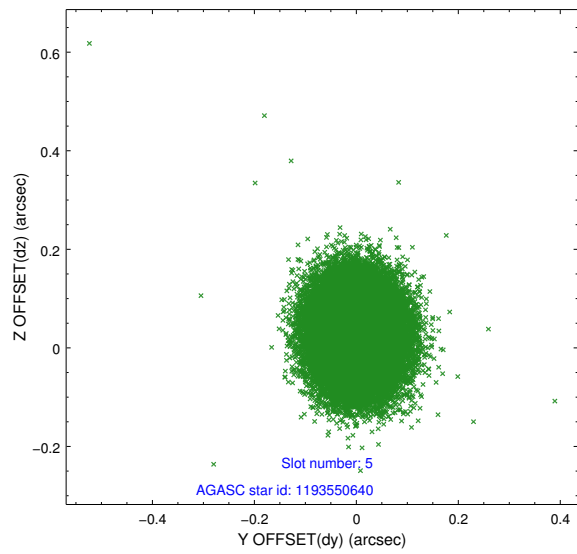
2.4.1 Slot 3



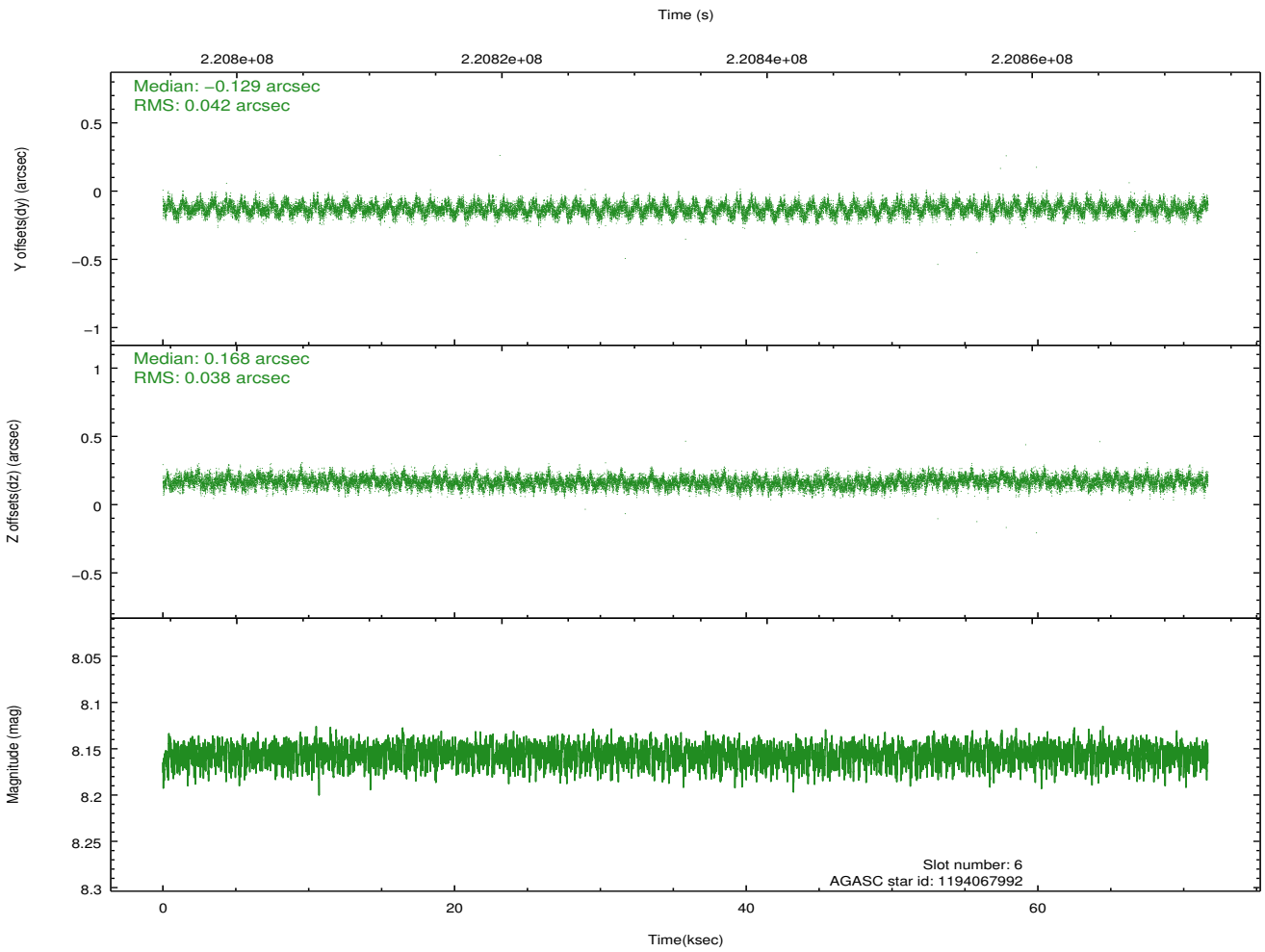
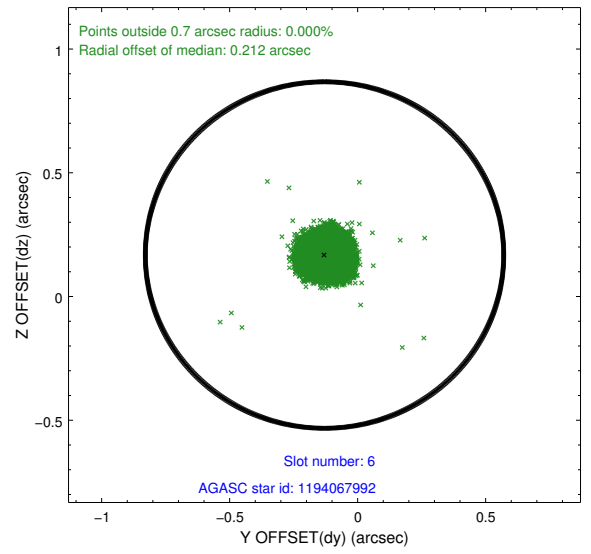
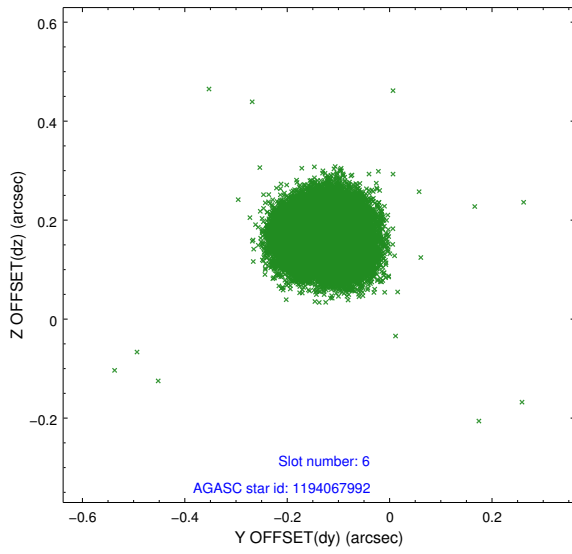
2.4.2 Slot 4



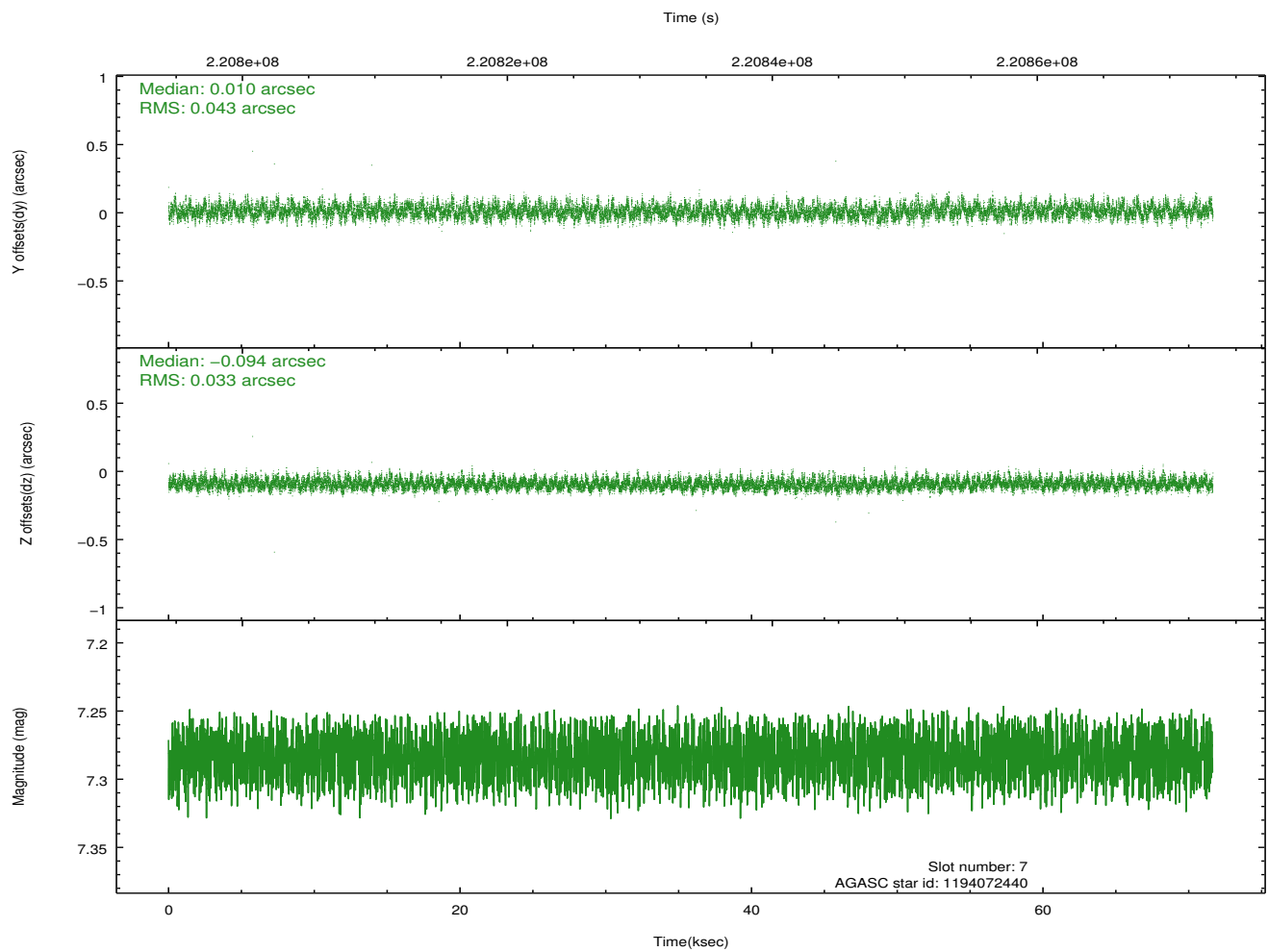
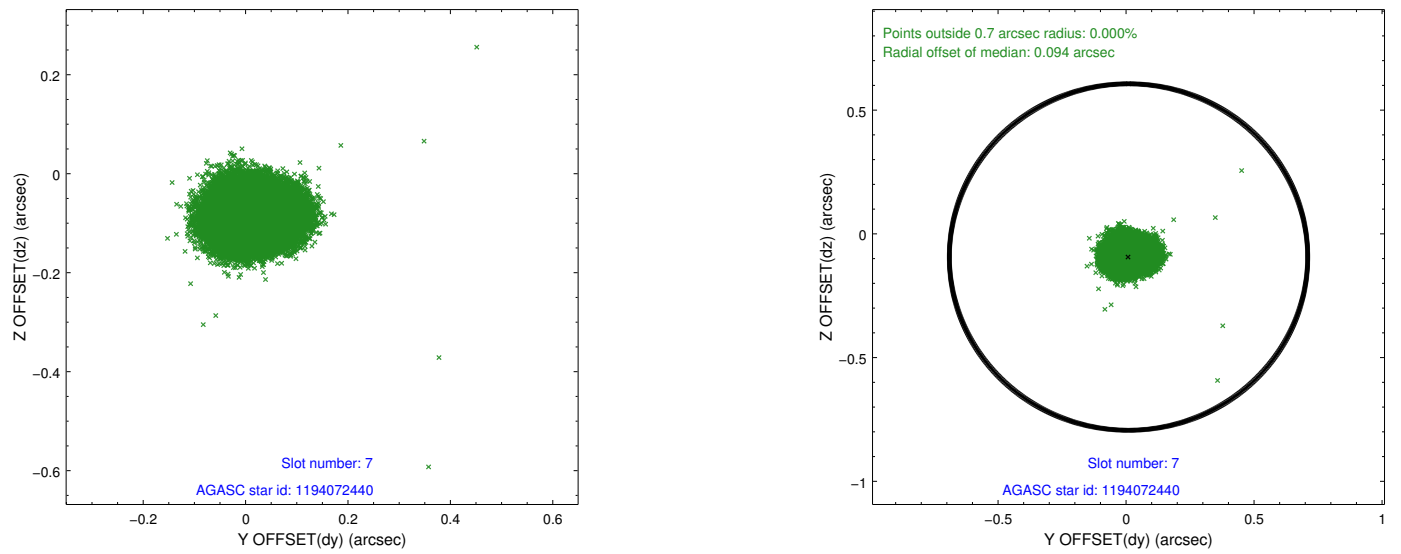
2.4.3 Slot 5



2.4.4 Slot 6

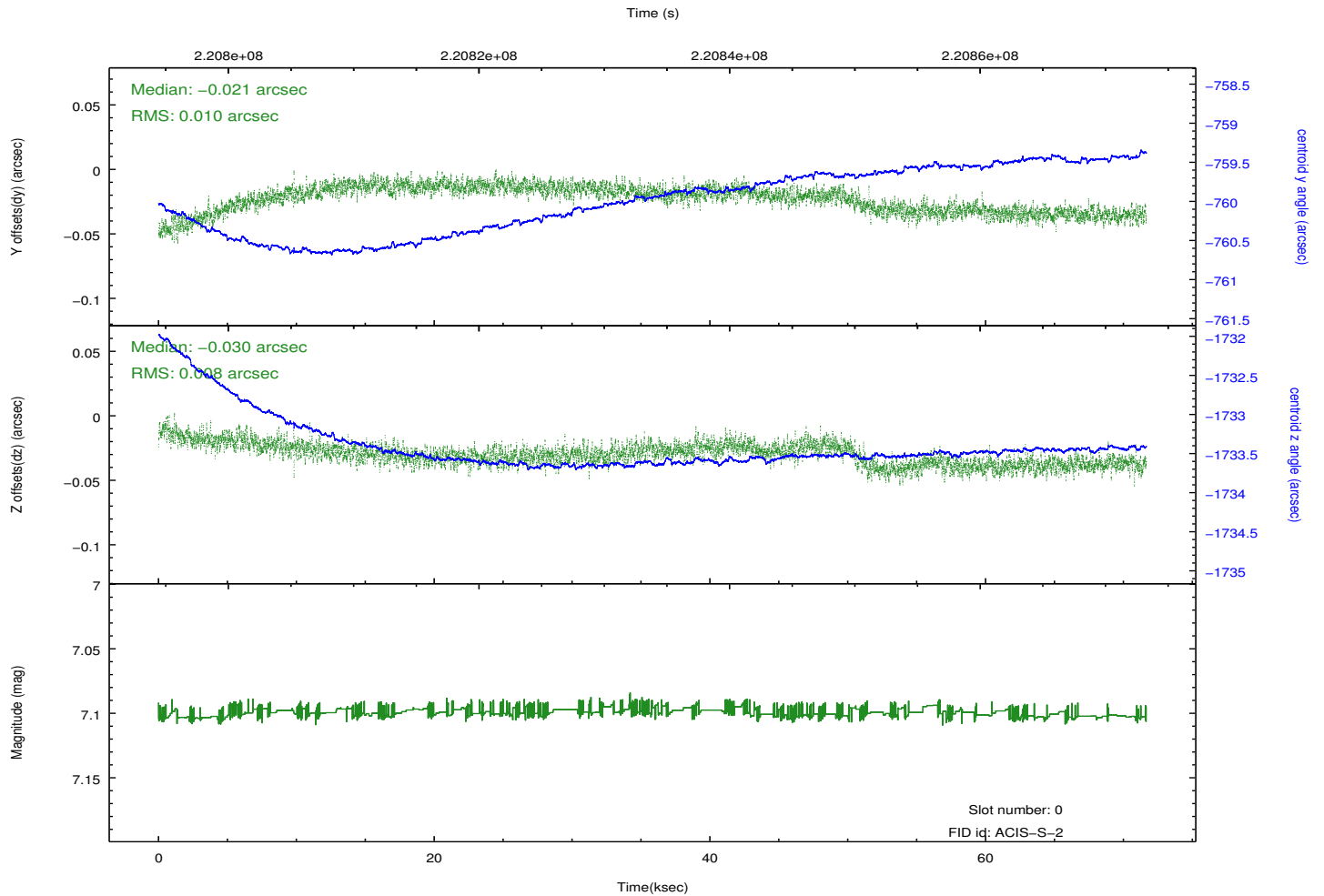
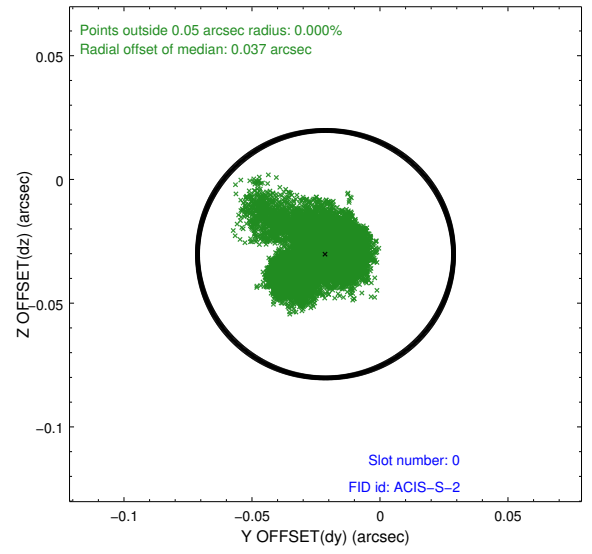
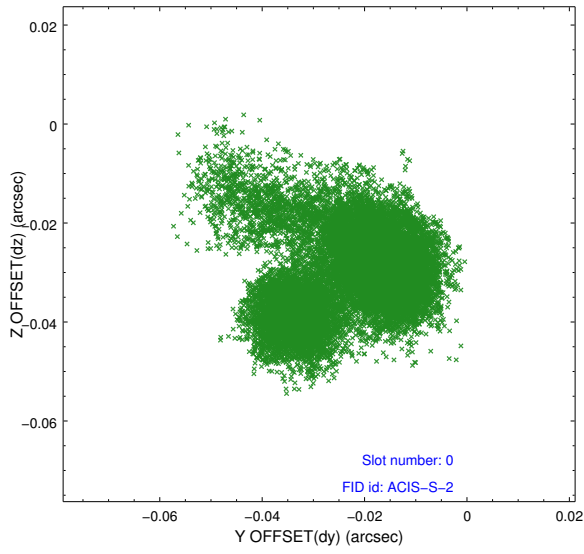


2.4.5 Slot 7

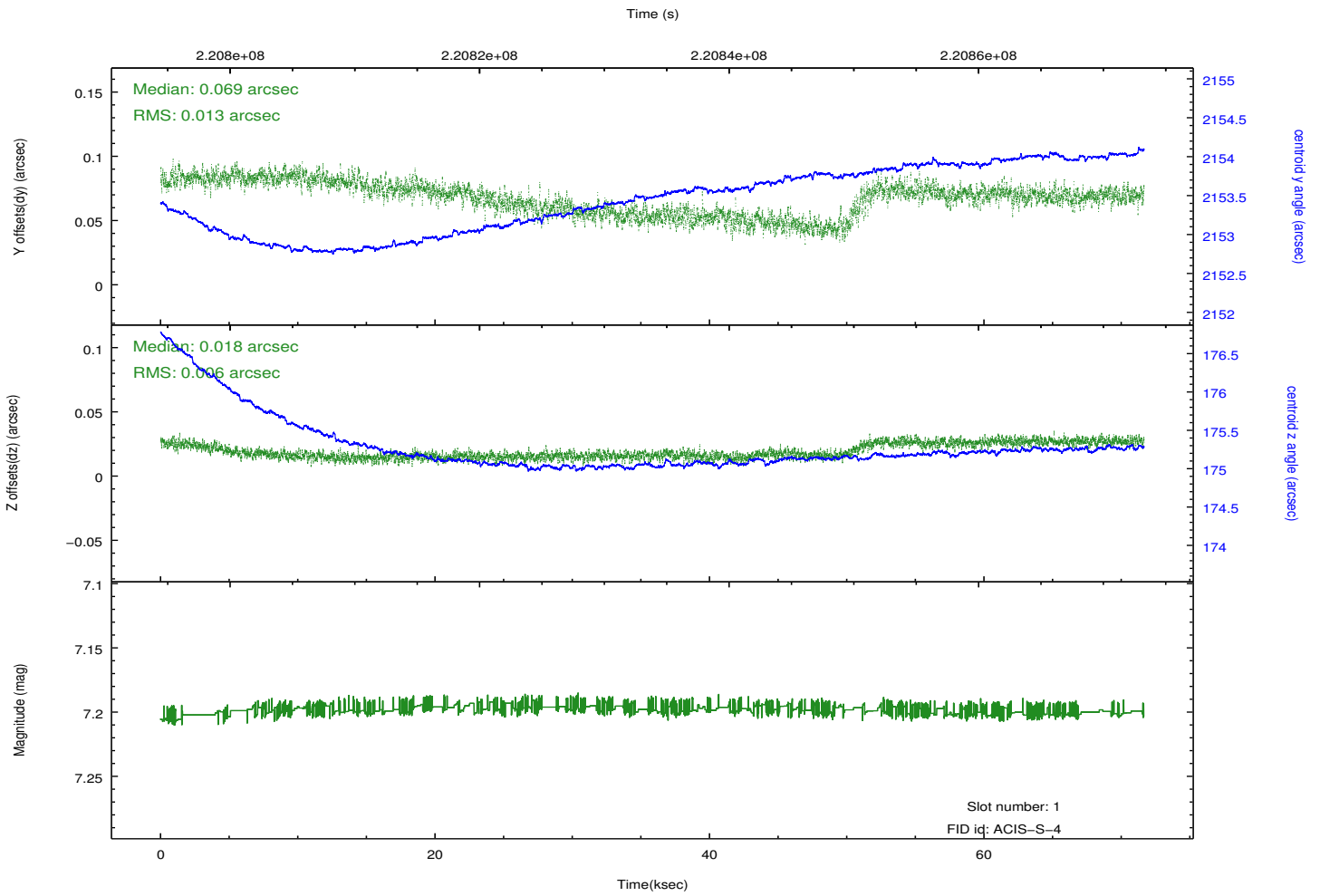
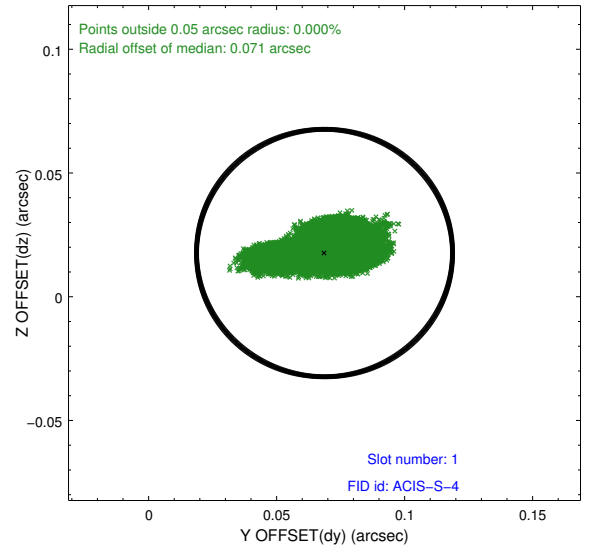
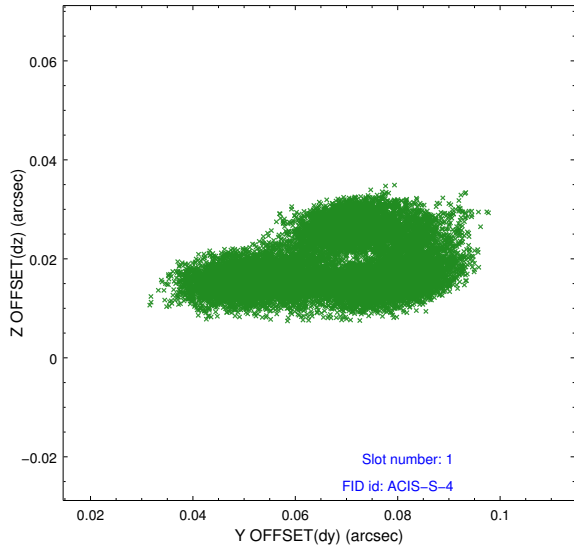


2.5 FID Slots

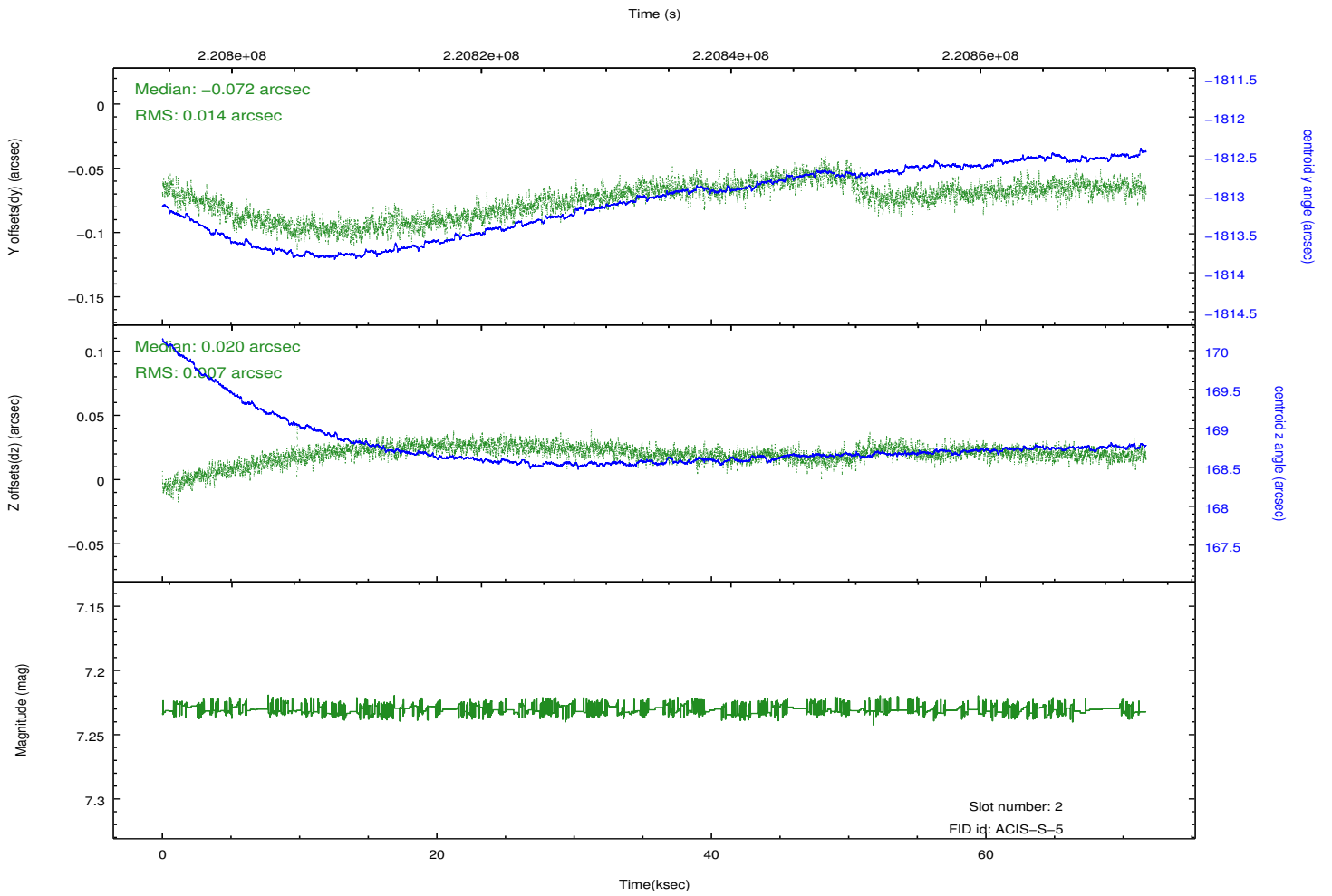
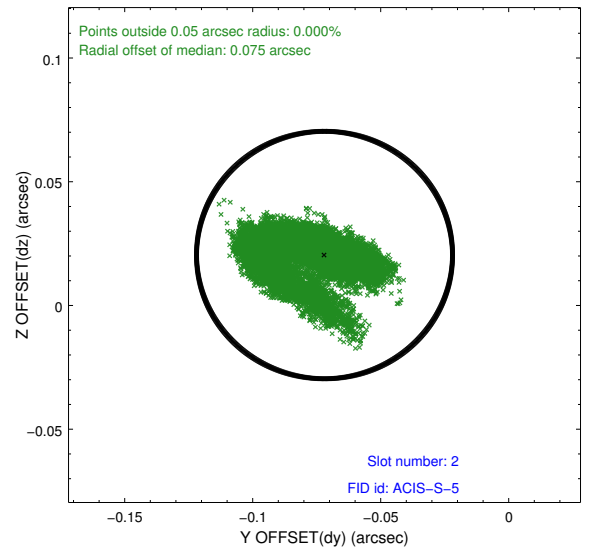
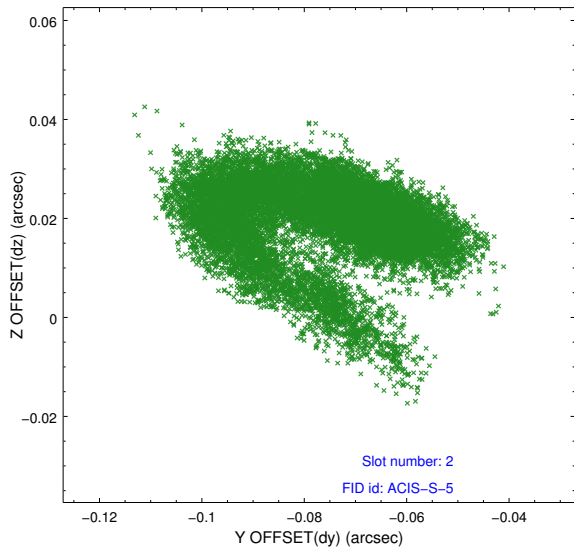
2.5.1 Slot 0



2.5.2 Slot 1



2.5.3 Slot 2



A Summary

A.1 Status

V&V Scientist	Jen Lauer
V&V Date (YYYY-MM-DD)	2013.01.08
V&V Edition	1
V&V Disposition and Status	OK
V&V Charge Time	71.65339

A.2 Comments