

# V&V Reference Report

## L2 ASCDS Version : 8.5.1.1

Observation 5905 - L2 Version 3  
Chandra X-Ray Center

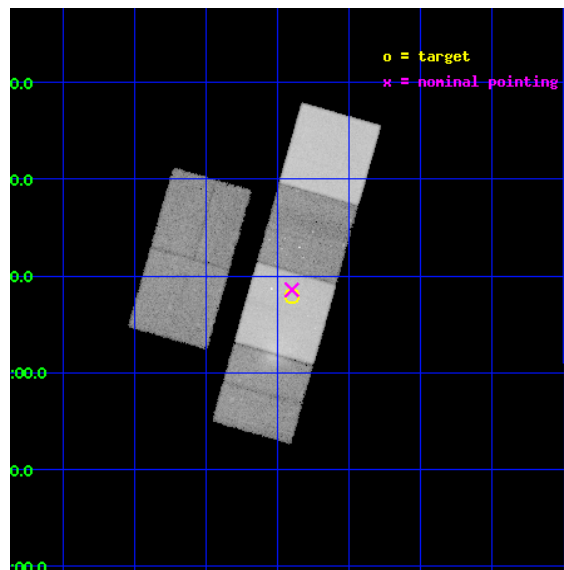
L2 Processing Date : Dec 28 2012

## Contents

<b>1</b>	<b>Front</b>	<b>2</b>
<b>2</b>	<b>OBI</b>	<b>3</b>
2.1	OBI . . . . .	3
2.1.1	Images . . . . .	3
2.1.2	Bias . . . . .	3
2.1.3	Parameters . . . . .	4
2.1.4	Events . . . . .	4
2.2	Compared Parameters . . . . .	5
2.3	Aspect . . . . .	6
2.4	Star Slots . . . . .	9
2.4.1	Slot 3 . . . . .	9
2.4.2	Slot 4 . . . . .	10
2.4.3	Slot 5 . . . . .	11
2.4.4	Slot 6 . . . . .	12
2.4.5	Slot 7 . . . . .	13
2.5	FID Slots . . . . .	14
2.5.1	Slot 0 . . . . .	14
2.5.2	Slot 1 . . . . .	15
2.5.3	Slot 2 . . . . .	16
<b>A</b>	<b>Summary</b>	<b>17</b>
A.1	Status . . . . .	17
A.2	Comments . . . . .	17

# 1 Front

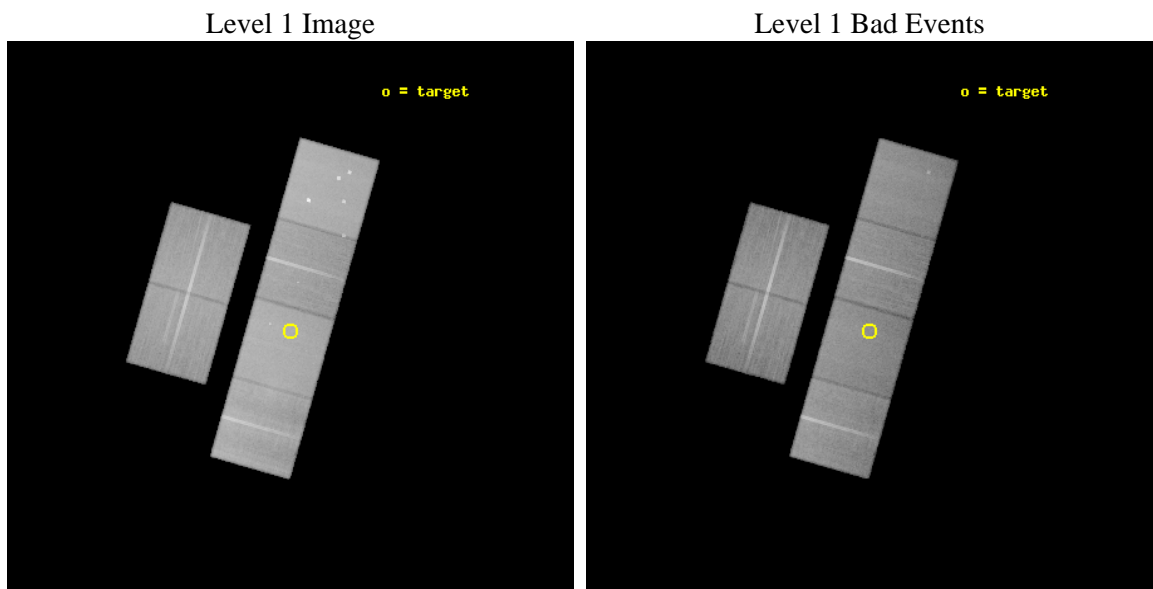
seq_num	600424	Sequence number
obs_id	5905	Observation id
title	Observation of the Hot Gas in the Nearby Dwarf Galaxy IC 1613	Prop
observer	Dr. Eric Schlegel	Principal investigator
object	IC 1613	Source name
dtcycle	0	&#160
cycle	P	events from which exps? Prim/Second/Both
ra_targ	16.225833	Observer's specified target RA [deg]
dec_targ	2.133333	Observer's specified target Dec [deg]
ra_nom	16.224841852752	Nominal RA [deg]
dec_nom	2.1429695235277	Nominal Dec [deg]
roll_nom	105.92356544945	Nominal Roll [deg]
revision	3	Processing version of data
ontime	49954.463257849	Sum of GTIs [s]
livetime	49321.909765112	Livetime [s]
ontime2	49954.504297853	Sum of GTIs [s]
ontime3	49951.099137515	Sum of GTIs [s]
ontime5	49954.422217846	Sum of GTIs [s]
ontime6	49951.140167624	Sum of GTIs [s]
ontime7	49954.463257849	Sum of GTIs [s]
ontime8	49954.299097866	Sum of GTIs [s]
l2events	611959	Number of level 2 events



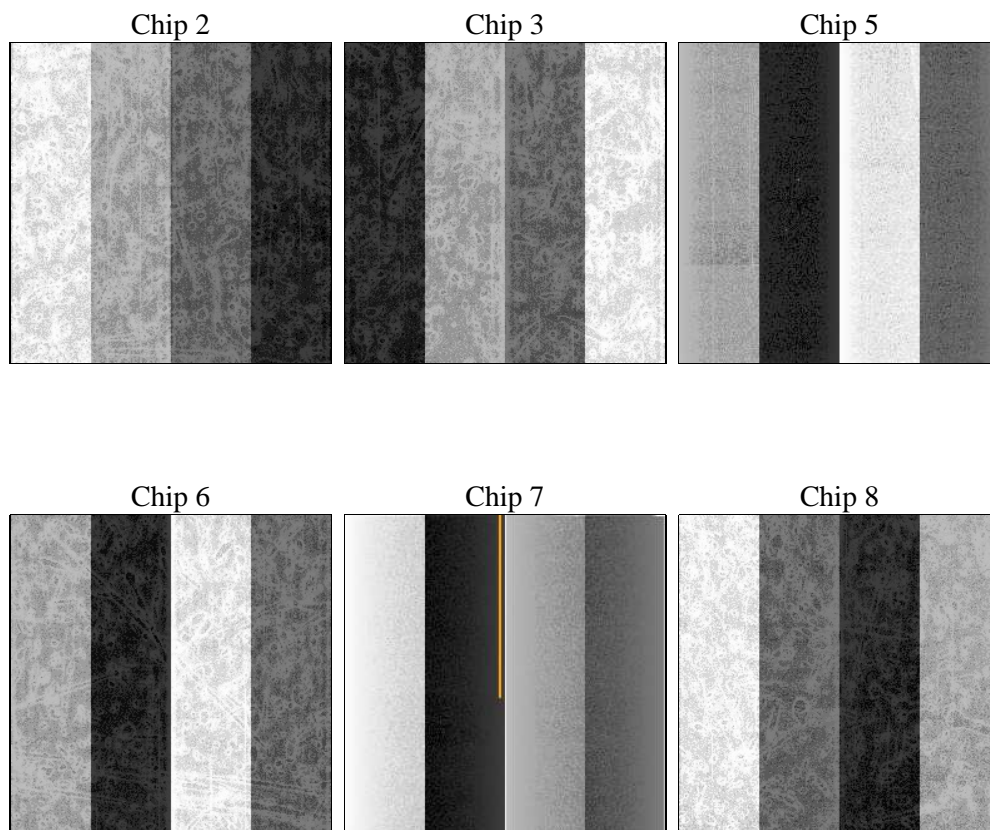
## 2 OBI

### 2.1 OBI

#### 2.1.1 Images



#### 2.1.2 Bias



### 2.1.3 Parameters

obi_num	2	Obi number	sched_exp_time	50000.000000	[s] Scheduled observation exposure time
ascdsver	8.5.1.1	Processing system revision	ontime	49954.463257849	Sum of GTIs [s]
caldbver	4.5.5	&#160	ontime2	49954.504297853	Sum of GTIs [s]
date	2012-12-28T22:07:45	Date and time of file creation	ontime3	49951.099137515	Sum of GTIs [s]
revision	3	Processing version of data	ontime5	49954.422217846	Sum of GTIs [s]
			ontime6	49951.140167624	Sum of GTIs [s]
			ontime7	49954.463257849	Sum of GTIs [s]
			ontime8	49954.299097866	Sum of GTIs [s]
			l1events	2645130	Number of level 1 events

### 2.1.4 Events

	ccd 2	ccd 3	ccd 5	ccd 6	ccd 7	ccd 8		ccd 2	ccd 3	ccd 5	ccd 6	ccd 7	ccd 8
level 1 events	375091	356181	563991	366024	511759	472084	grade 0 events	18737	18900	36159	18424	21453	38508
rejected events	332272	313193	299135	320804	293824	363373		4%	5%	6%	5%	4%	8%
rejected %	88%	87%	53%	87%	57%	76%	grade 1 events	219	197	749	187	547	357
								0%	0%	0%	0%	0%	0%
							grade 2 events	9065	8362	75632	9430	44126	23195
								2%	2%	13%	2%	8%	4%
							grade 3 events	3960	4068	10157	4349	19197	10927
								1%	1%	1%	1%	3%	2%
							grade 4 events	3949	4117	9150	4173	19147	10098
								1%	1%	1%	1%	3%	2%
							grade 5 events	14343	16427	40202	16940	47559	22346
								3%	4%	7%	4%	9%	4%
							grade 6 events	7114	7547	133822	8854	114048	25992
								1%	2%	23%	2%	22%	5%
							grade 7 events	317704	296563	258120	303667	245682	340661
								84%	83%	45%	82%	48%	72%

## 2.2 Compared Parameters

Parameter	Planned	Actual	Parameter	Planned	Actual
Instrument	ACIS	ACIS	Obspar format version number	7	7
Detector	ACIS-235678	ACIS-235678	Obspar file type	PREDICTED	ACTUAL
Grating	NONE	NONE	Obspar update status	NONE	UPDATED
Data mode	FAINT	FAINT	Number of optional ACIS chips dropped	0	0
Observation mode	POINTING	POINTING	On-chip summing requested	N	N
[deg] Pointing RA	16.244682	16.22484185275202	Subarray requested	NONE	NONE
[deg] Pointing Dec	2.124273	2.14296952352773	Alternating exposures requested	N	N
[deg] Pointing Roll	105.766202	105.9235654494496	[s] Primary exposure time	0.000000	3.2
[mm] SIM focus pos	-0.684267	-0.6828225247311905			
[mm] SIM defocus	0	0.001444936568705701			
[mm] SIM translation stage pos	-190.132523	-190.1425803651734			
[mm] SIM translation stage offset	0	0.01005778216563158			
[s] Observation start time (MET)	242265907.184000	242264921.82071			
Observation start date	2005-09-05T00:04:03	2005-09-04T23:48:41			
[s] Observation end time (MET)	242315907.184000	242316886.76059			
Observation end date	2005-09-05T13:57:23	2005-09-05T14:14:46			
Read mode	TIMED	TIMED			

## 2.3 Aspect

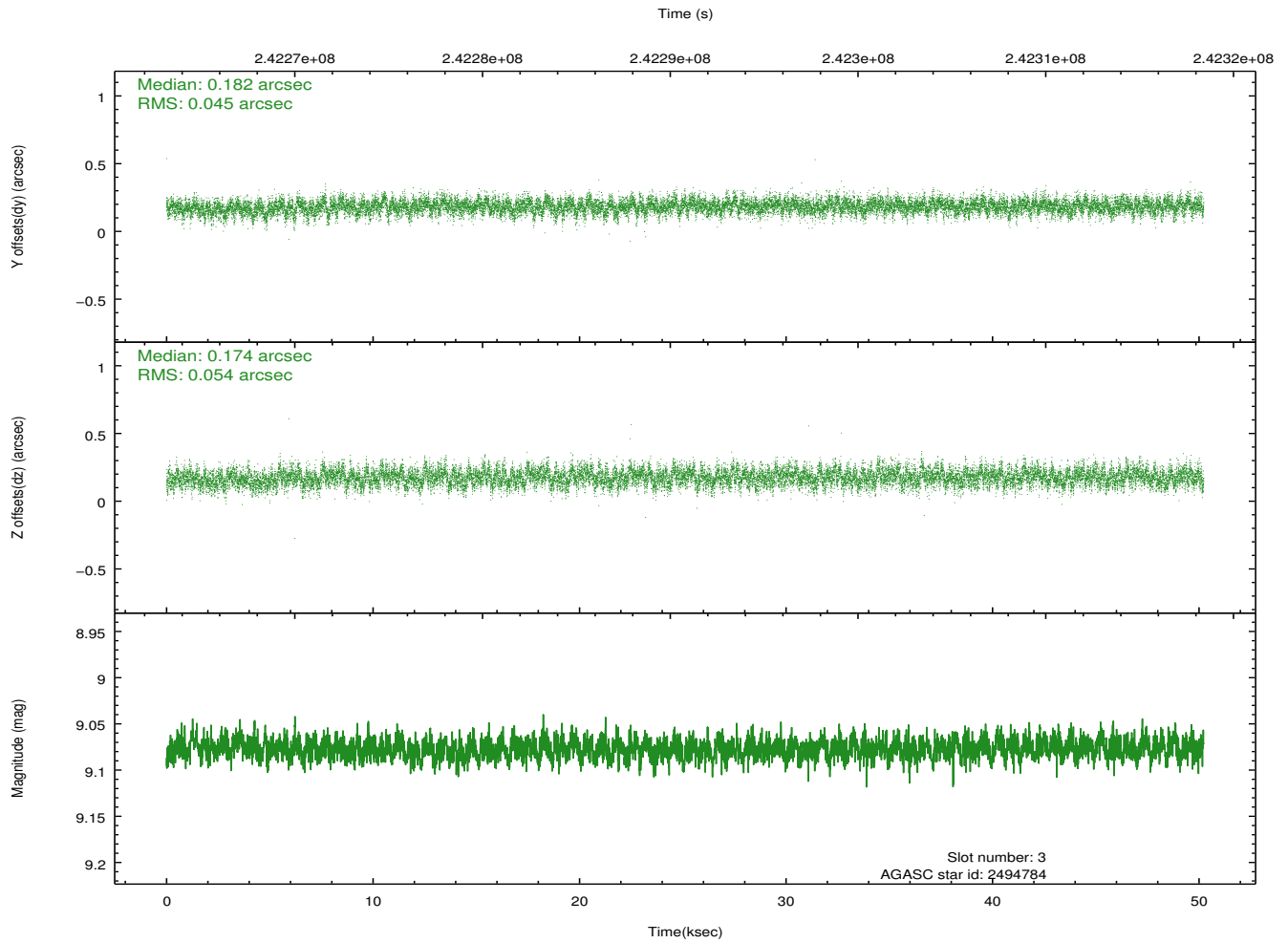
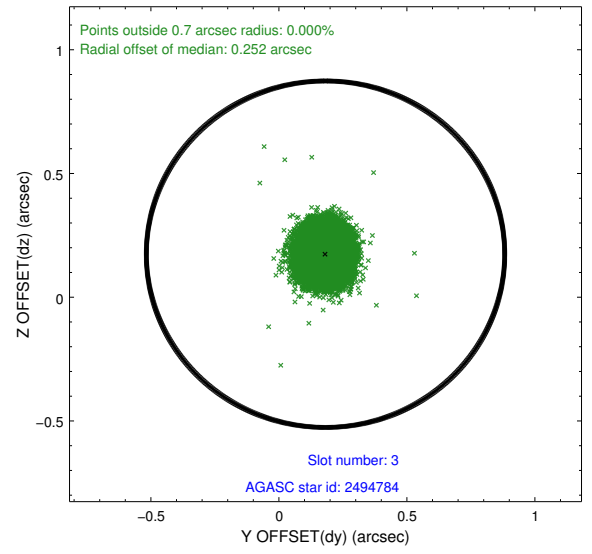
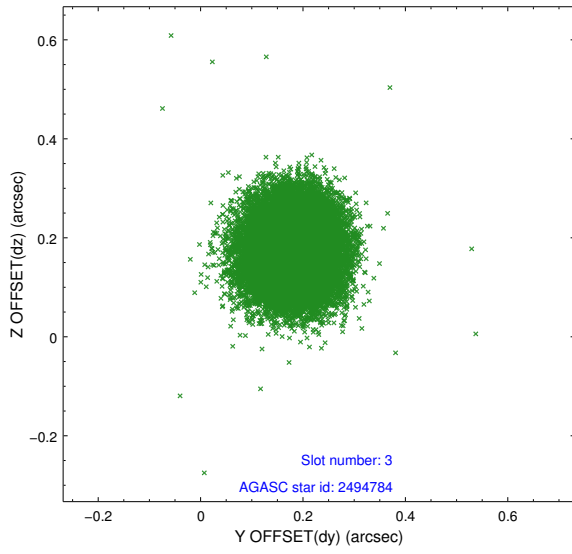


### Slot Statistics

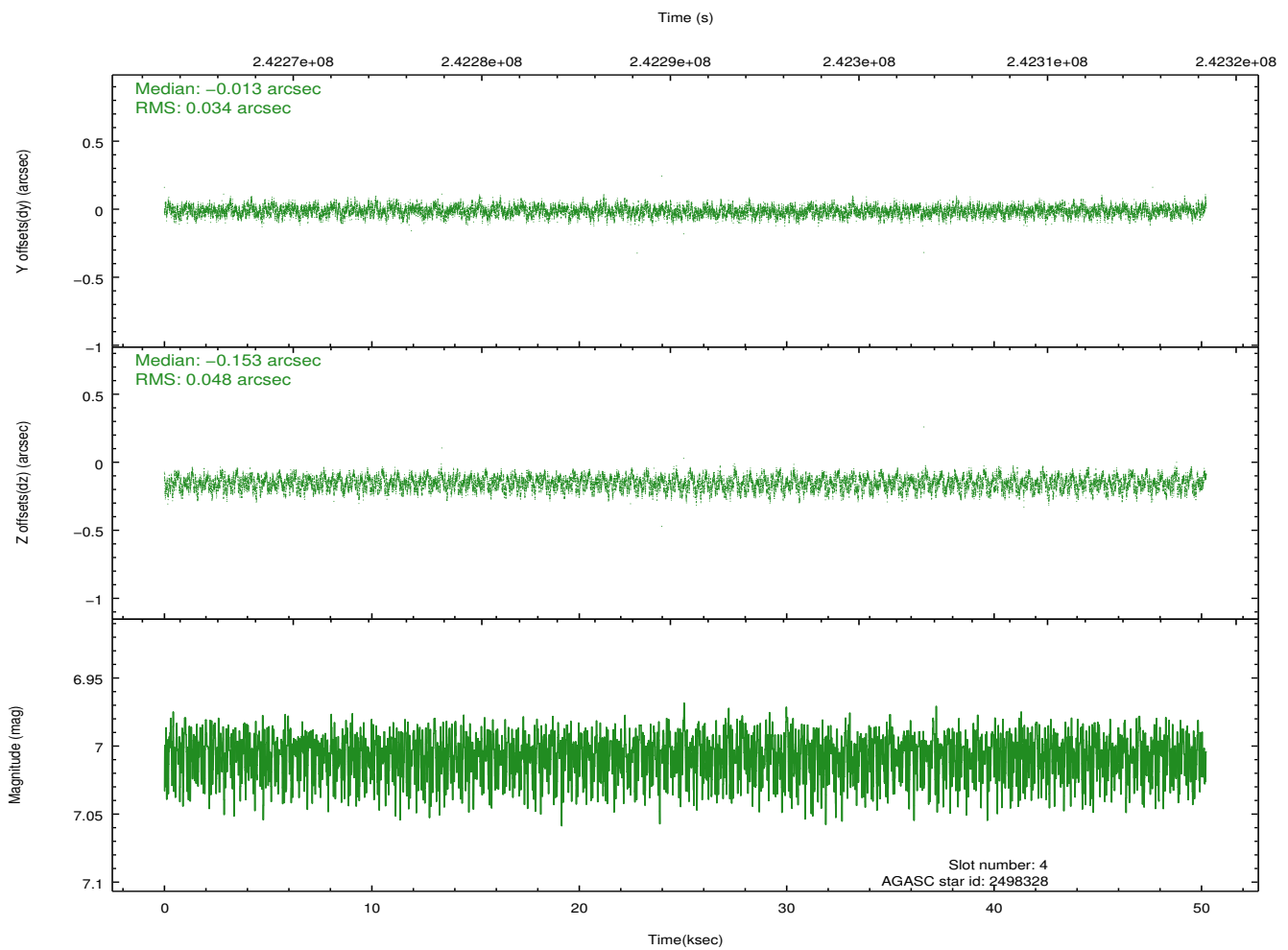
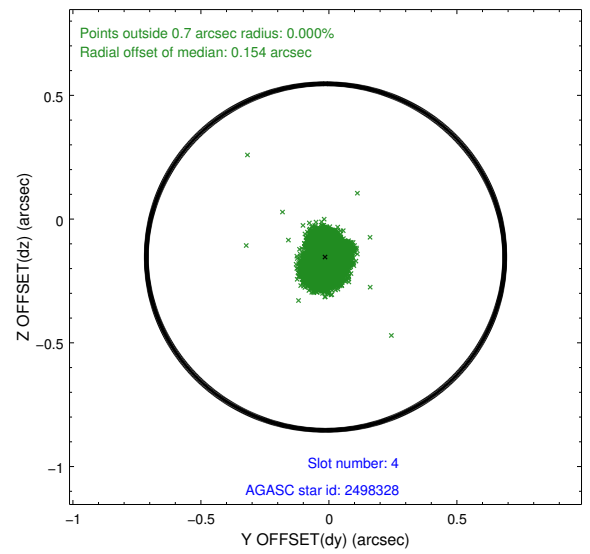
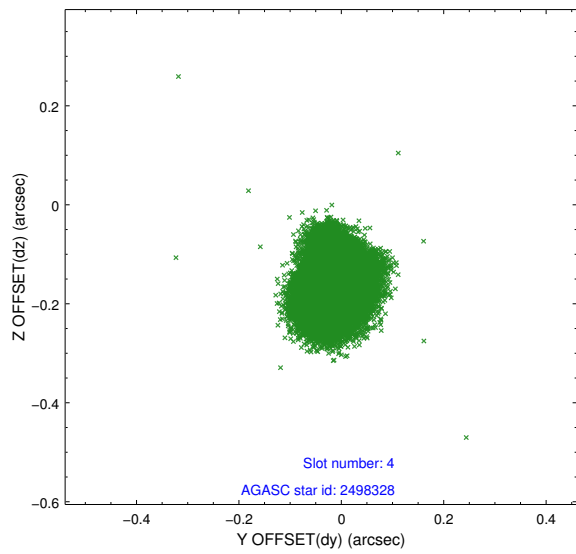
slot	status	id	mag	n_pts	med_dy	med_dz	dr1	dr2	ra	dec	mean_y	mean_z
0	FID	ACIS-S-2	7.11	12252	-0.042	-0.023	0.011	0.020	0.000000	0.000000	-760.27	-1731.64
1	FID	ACIS-S-4	7.21	12250	0.095	0.026	0.007	0.013	0.000000	0.000000	2153.11	176.97
2	FID	ACIS-S-5	7.24	12250	-0.083	0.005	0.010	0.021	0.000000	0.000000	-1813.22	170.52
3	GUIDE	2494784	9.08	24489	0.182	0.174	0.075	0.122	16.552098	1.950471	-902.40	-894.88
4	GUIDE	2498328	7.01	24500	-0.013	-0.153	0.063	0.099	16.181702	2.313711	717.79	32.63
5	GUIDE	2883864	7.78	24502	-0.050	-0.047	0.052	0.086	15.498685	2.525964	2121.22	2188.65
6	GUIDE	2884168	8.75	24494	-0.098	0.239	0.075	0.119	16.533030	2.632517	1479.63	-1494.65
7	GUIDE	2492120	8.80	24491	-0.014	-0.212	0.088	0.139	15.548721	2.147144	759.89	2386.78

## 2.4 Star Slots

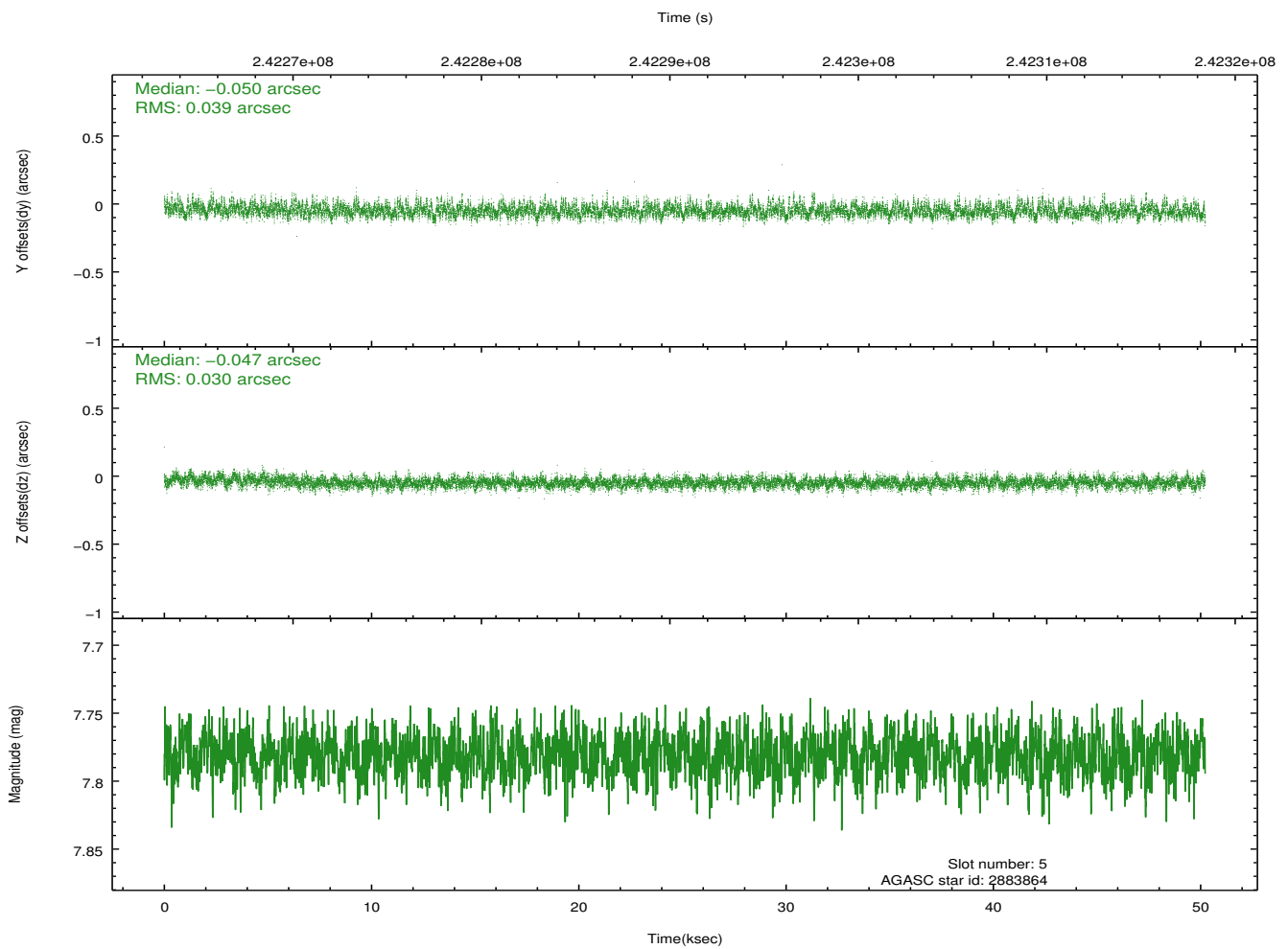
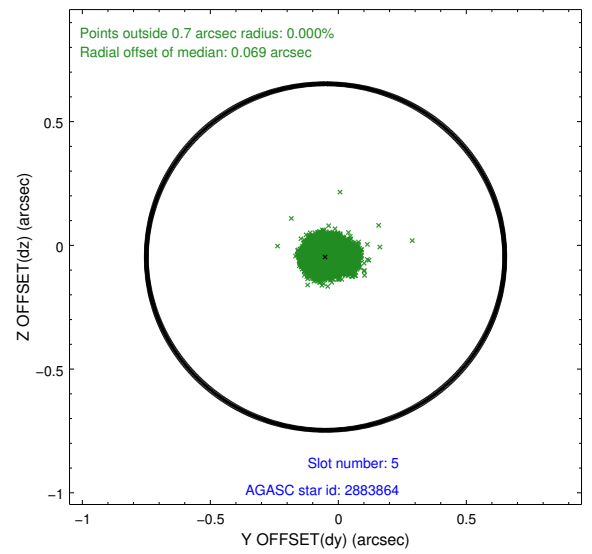
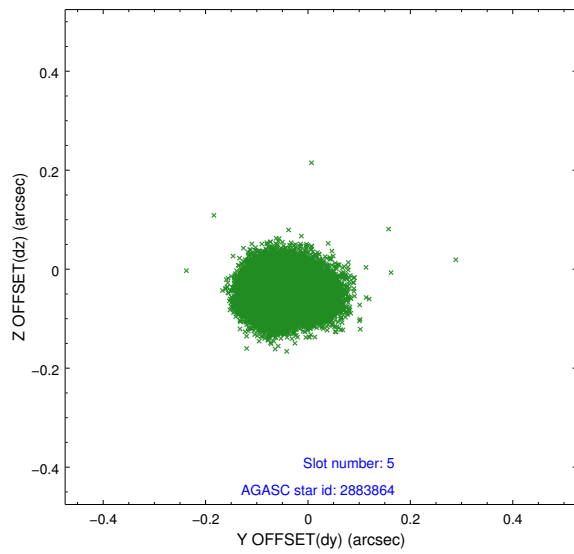
### 2.4.1 Slot 3



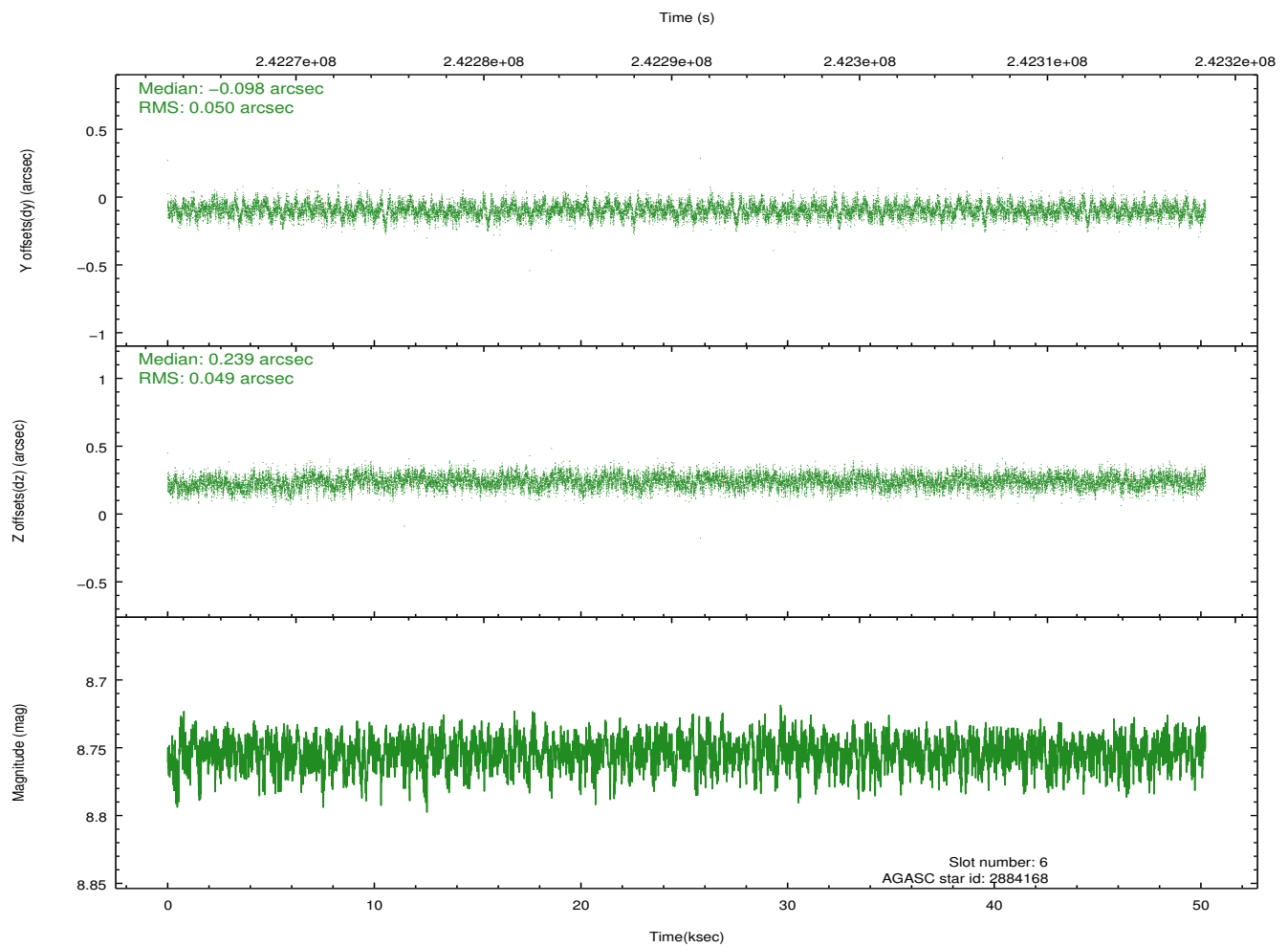
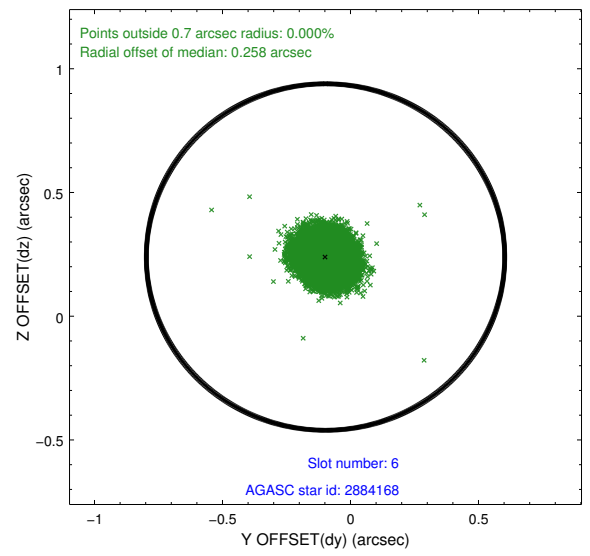
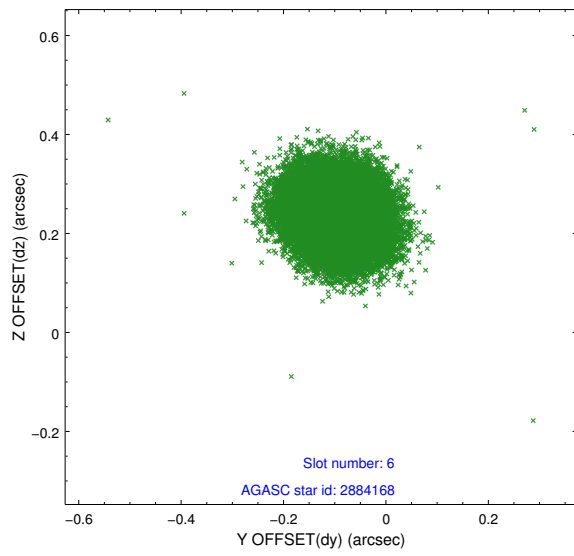
## 2.4.2 Slot 4



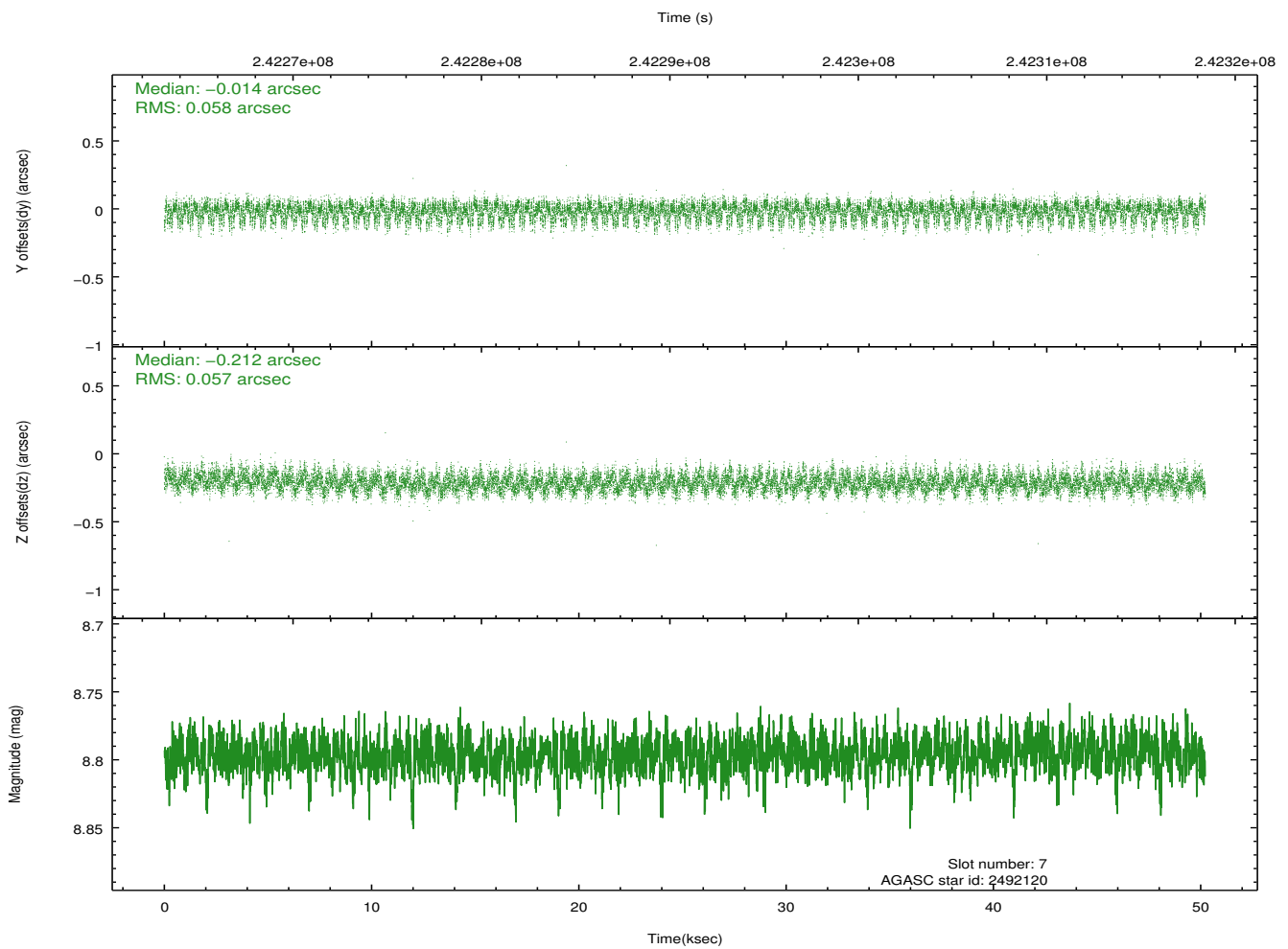
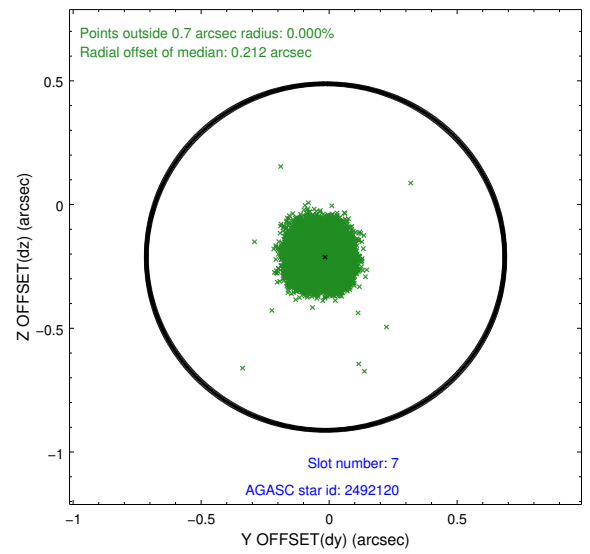
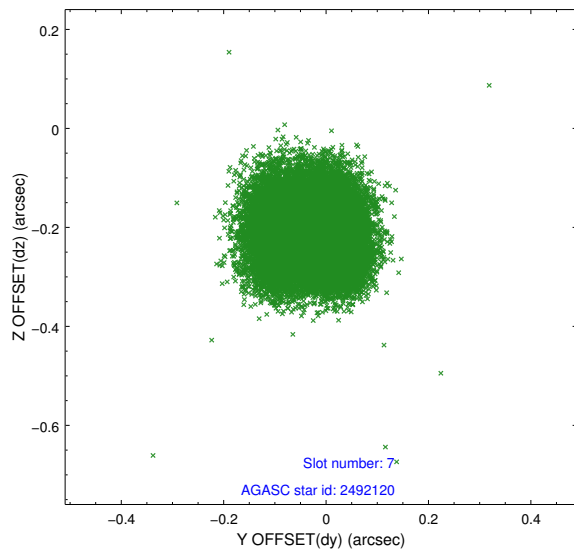
### 2.4.3 Slot 5



## 2.4.4 Slot 6

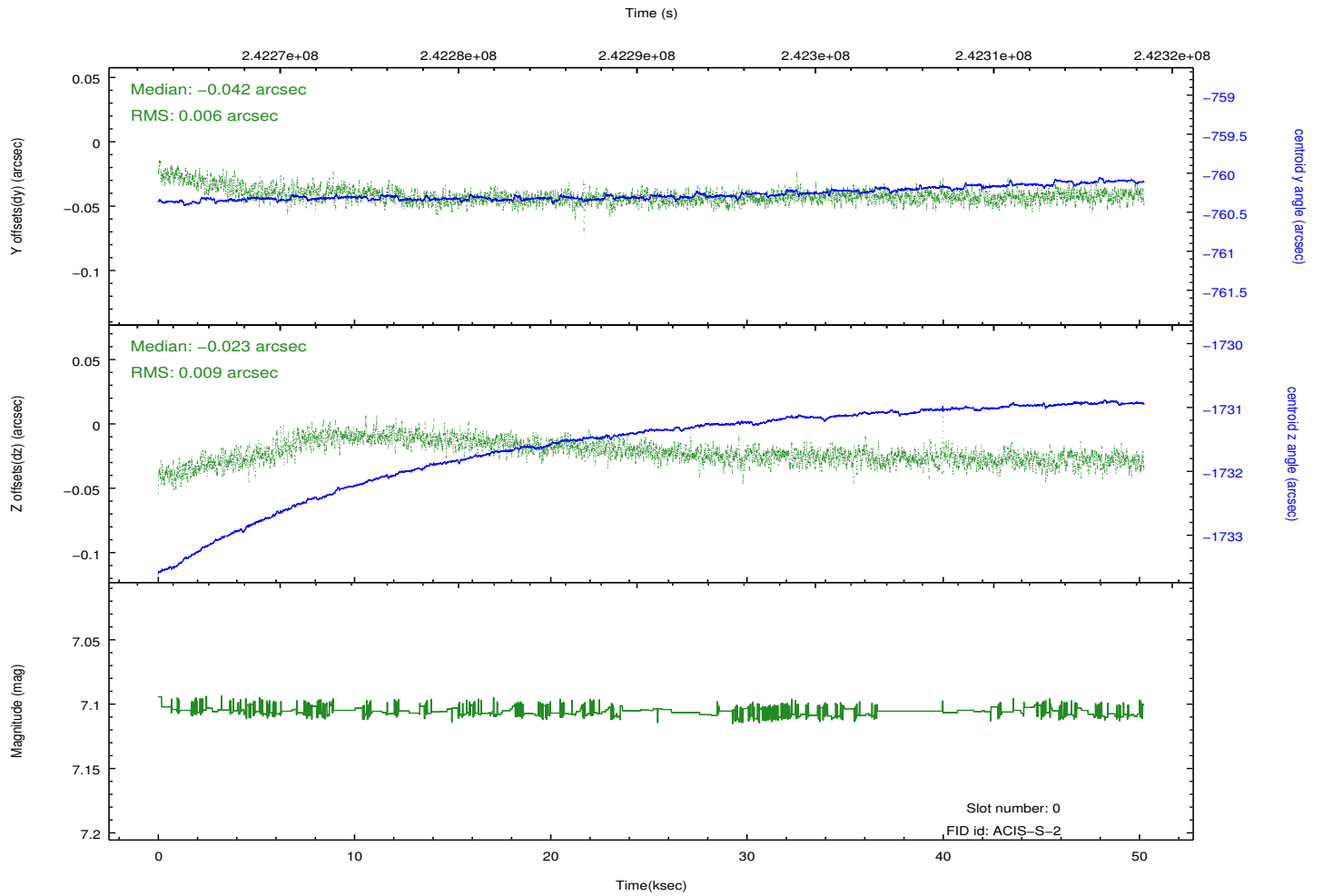
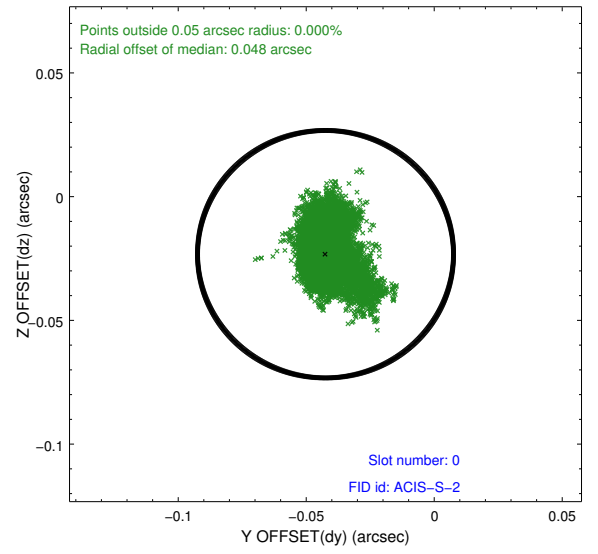
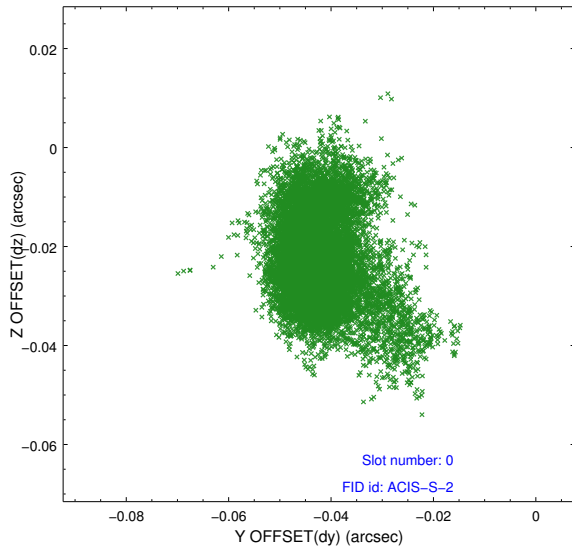


## 2.4.5 Slot 7

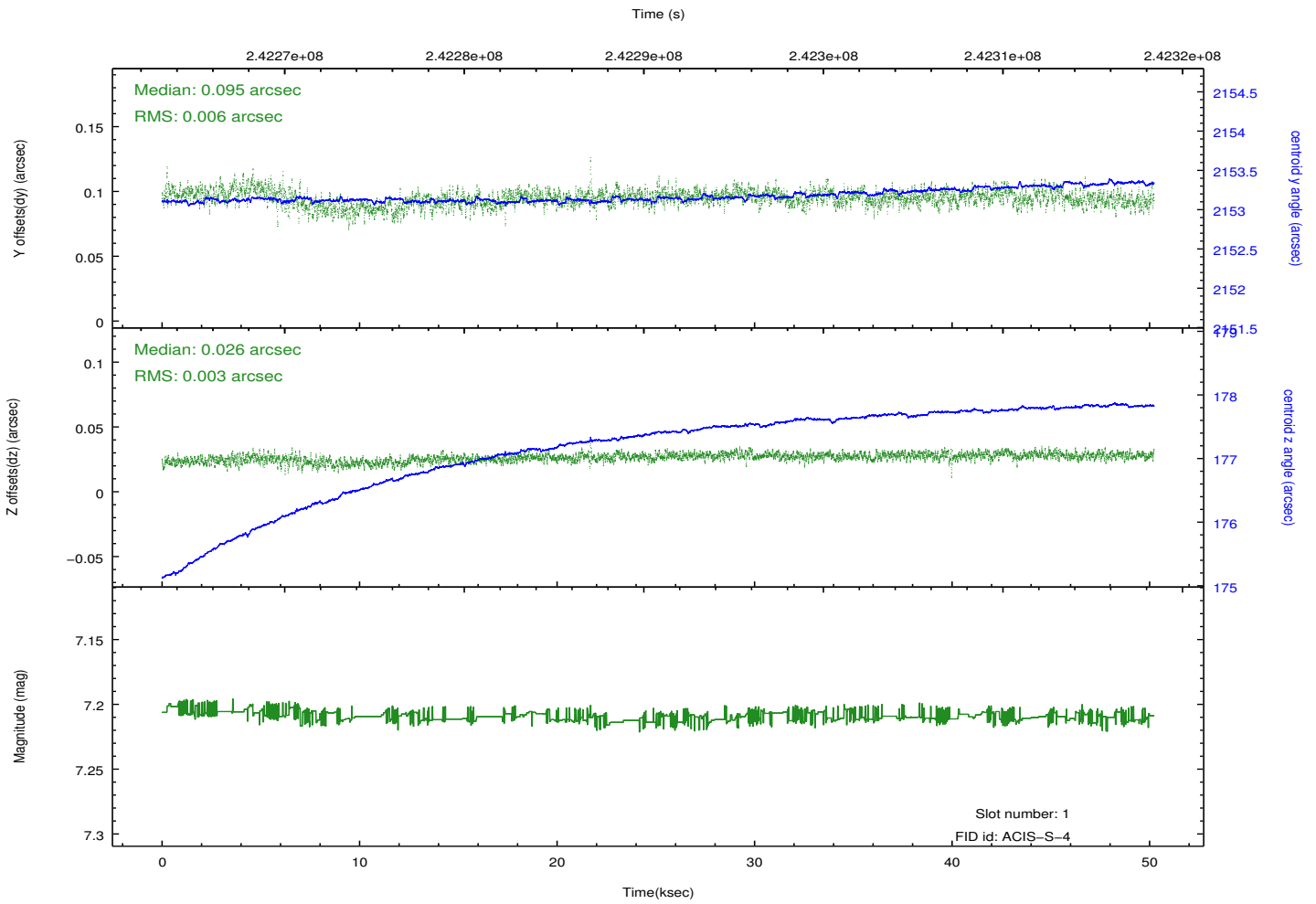
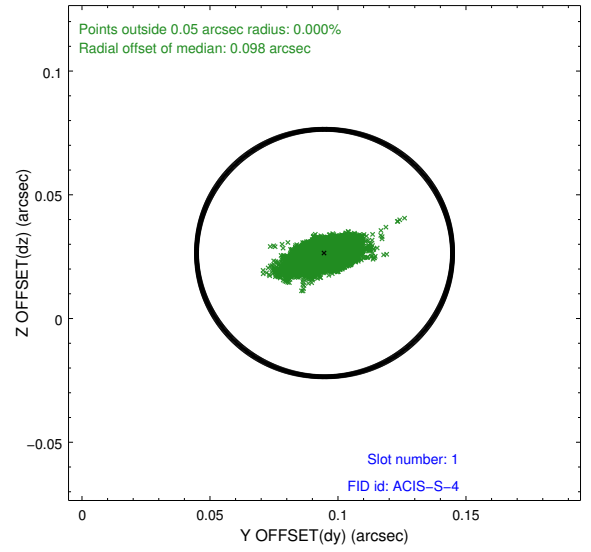
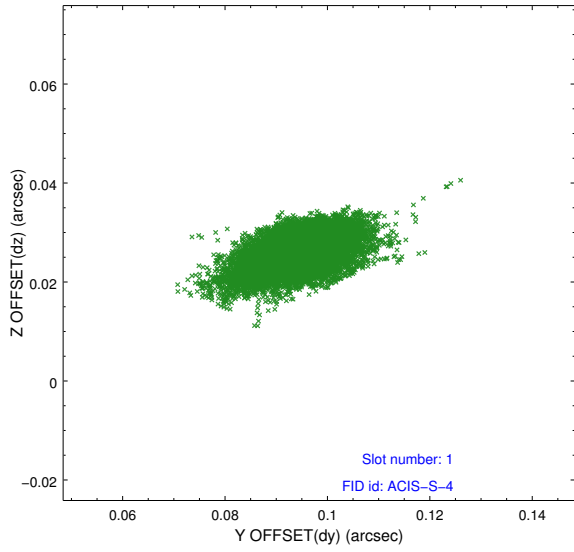


## 2.5 FID Slots

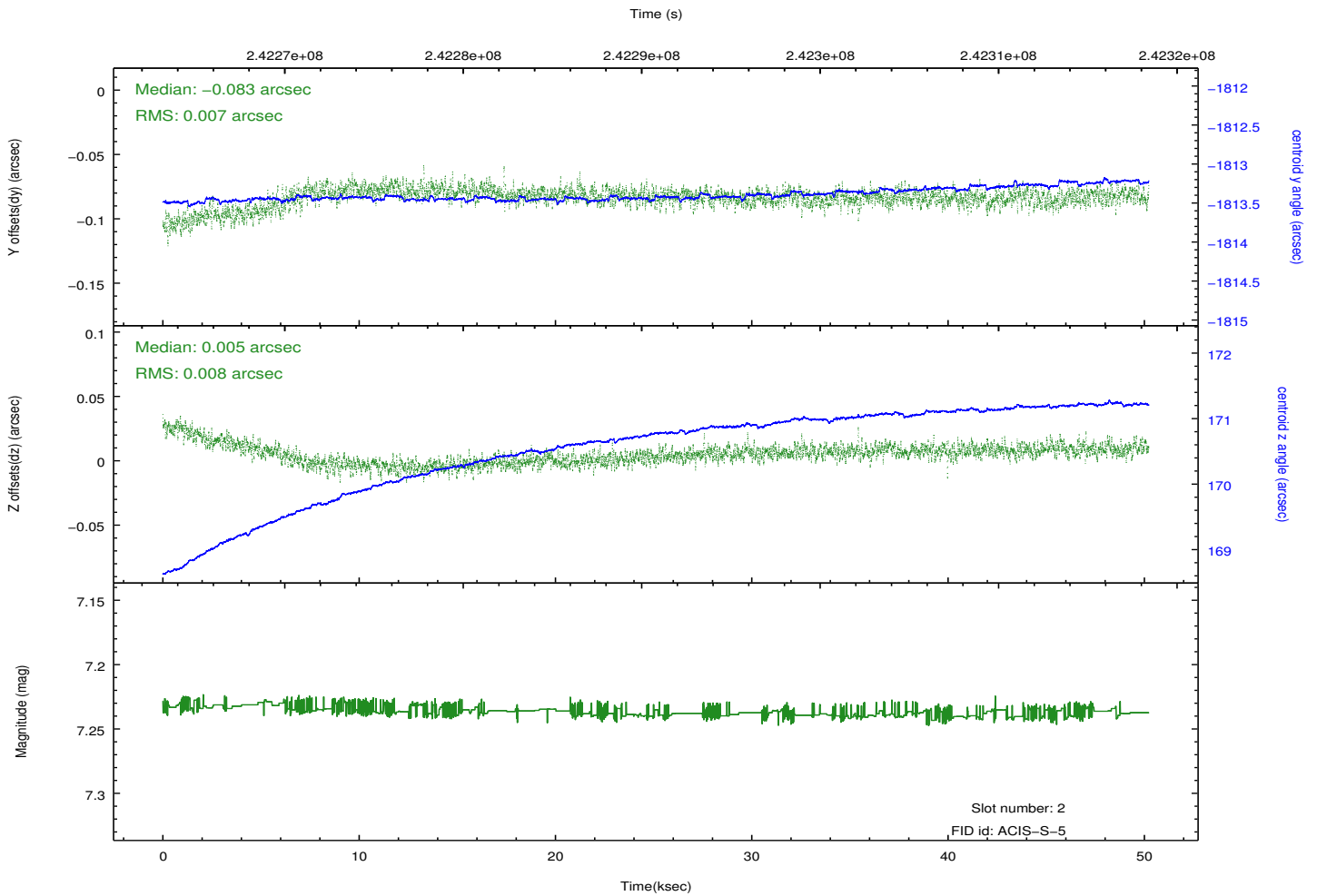
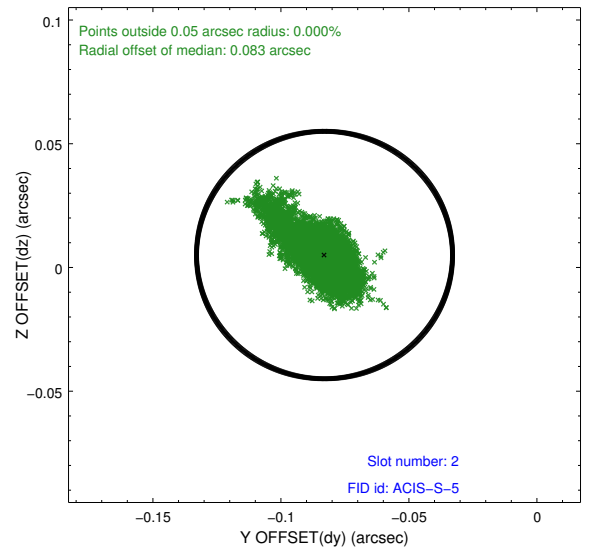
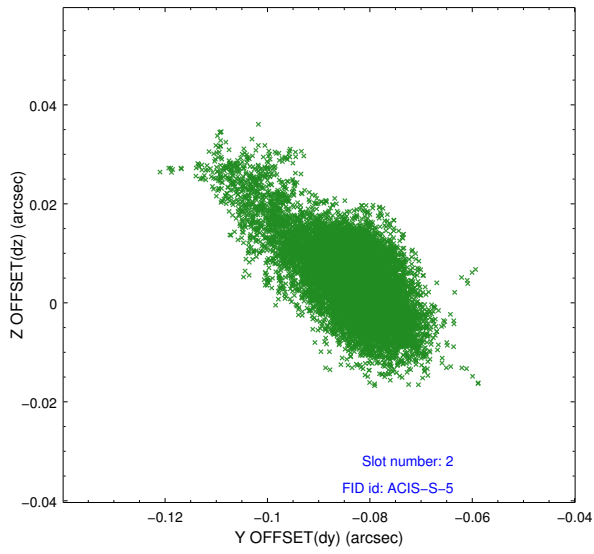
### 2.5.1 Slot 0



## 2.5.2 Slot 1



### 2.5.3 Slot 2



# A Summary

## A.1 Status

V&V Scientist	Beth Sundheim
V&V Date (YYYY-MM-DD)	2013.01.27
V&V Edition	1
V&V Disposition and Status	OK
V&V Charge Time	49.95519

## A.2 Comments